

SW 5TH AVENUE

SW 6TH AVENUE

SW 5TH AVENUE

SW MORRISON STREET

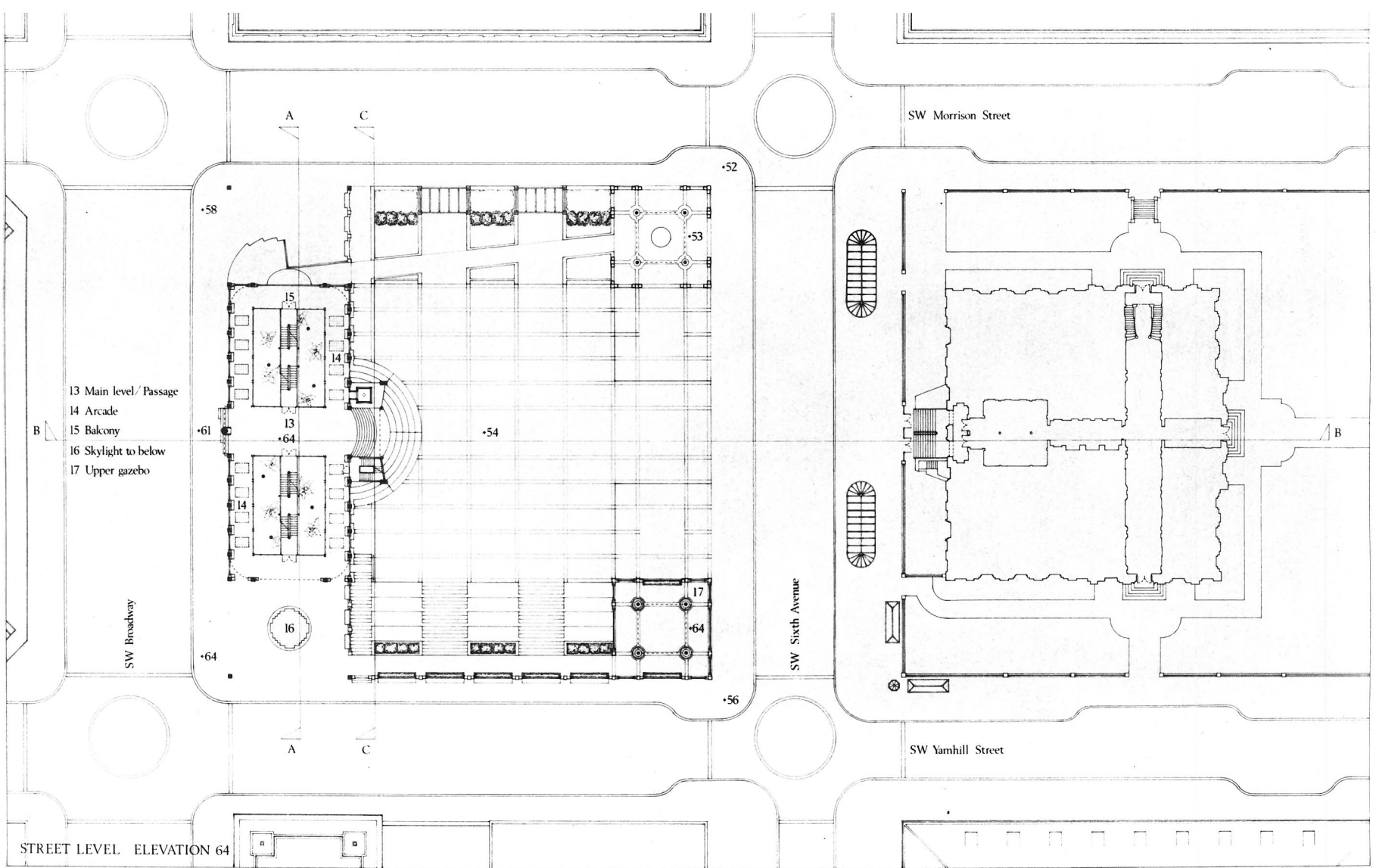
SW YAMHILL STREET

NORTH
↑

SITE PLAN

PIONEER SQUARE

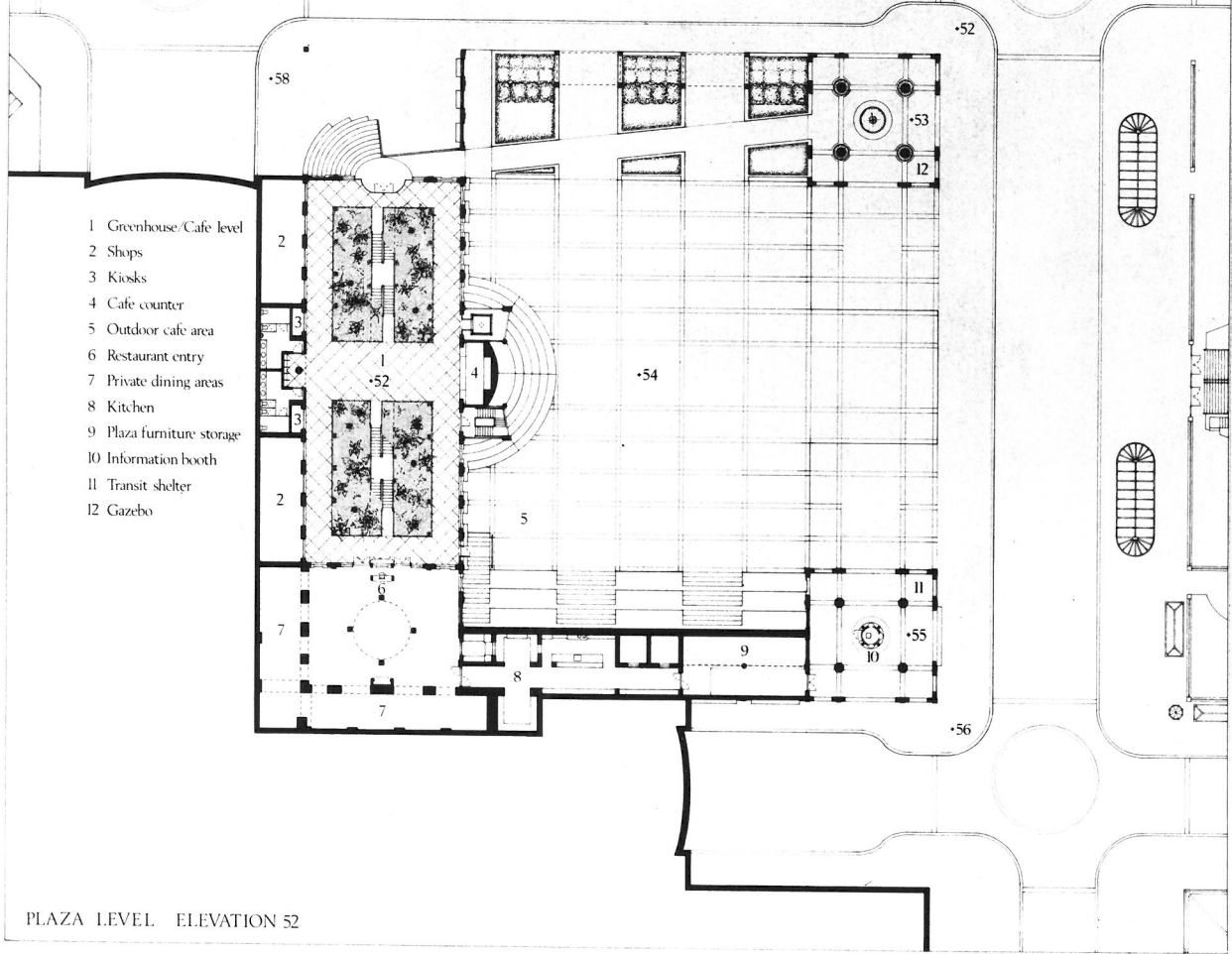
BOARD ONE



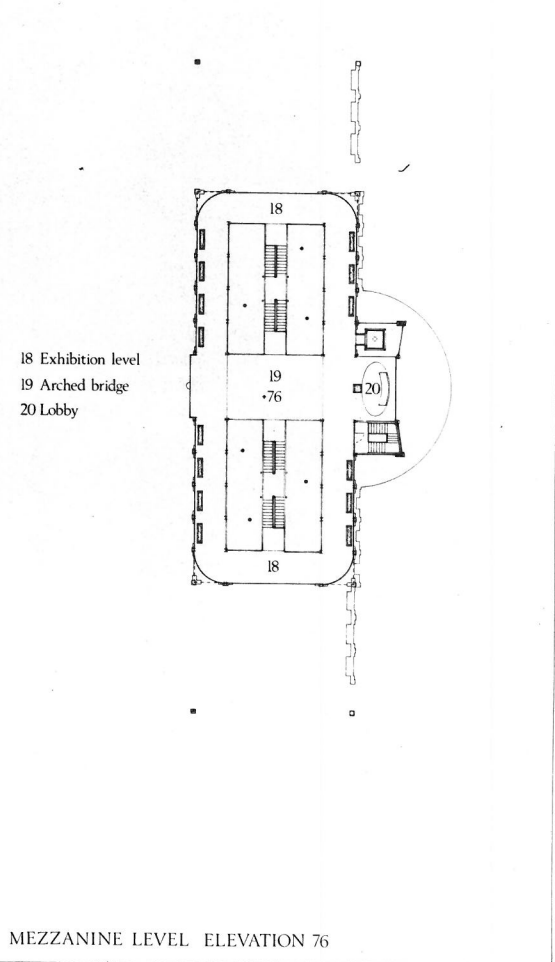
PLAN

PIONEER SQUARE

BOARD THREE



PLAZA LEVEL ELEVATION 52

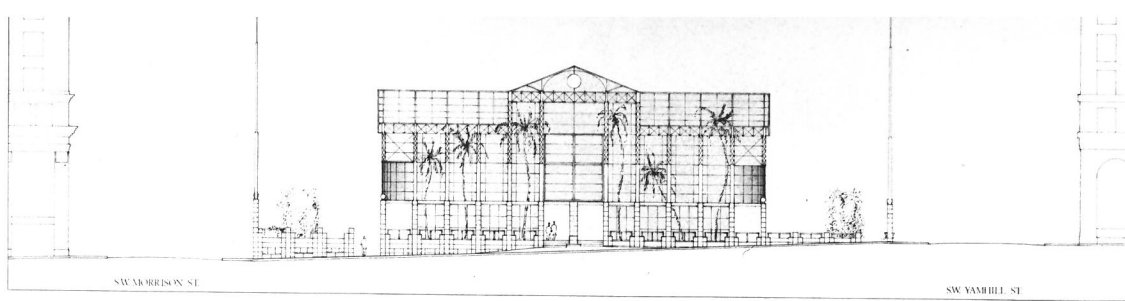


MEZZANINE LEVEL ELEVATION 76

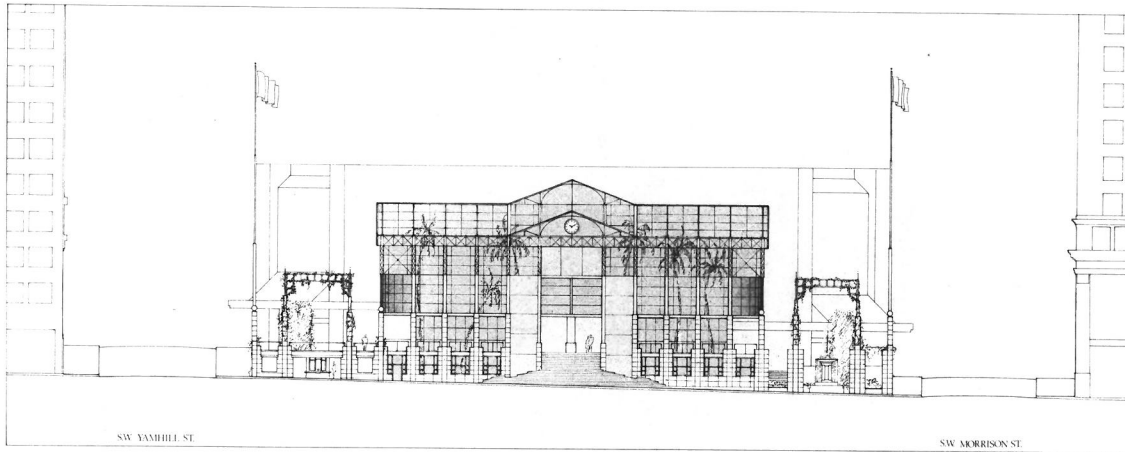
PLANS

PIONEER SQUARE

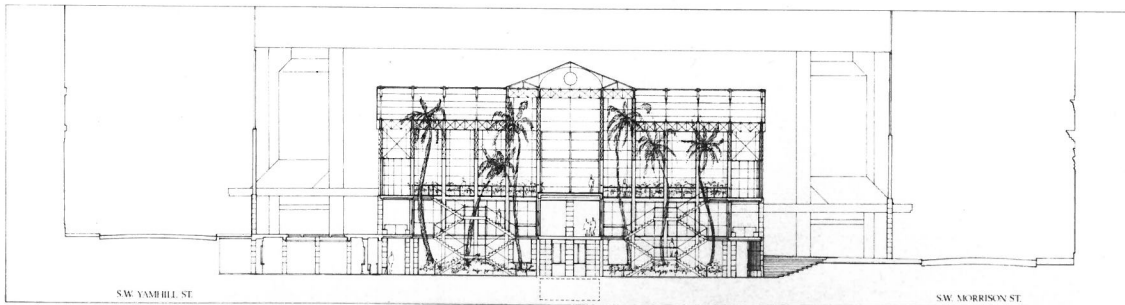
BOARD FOUR



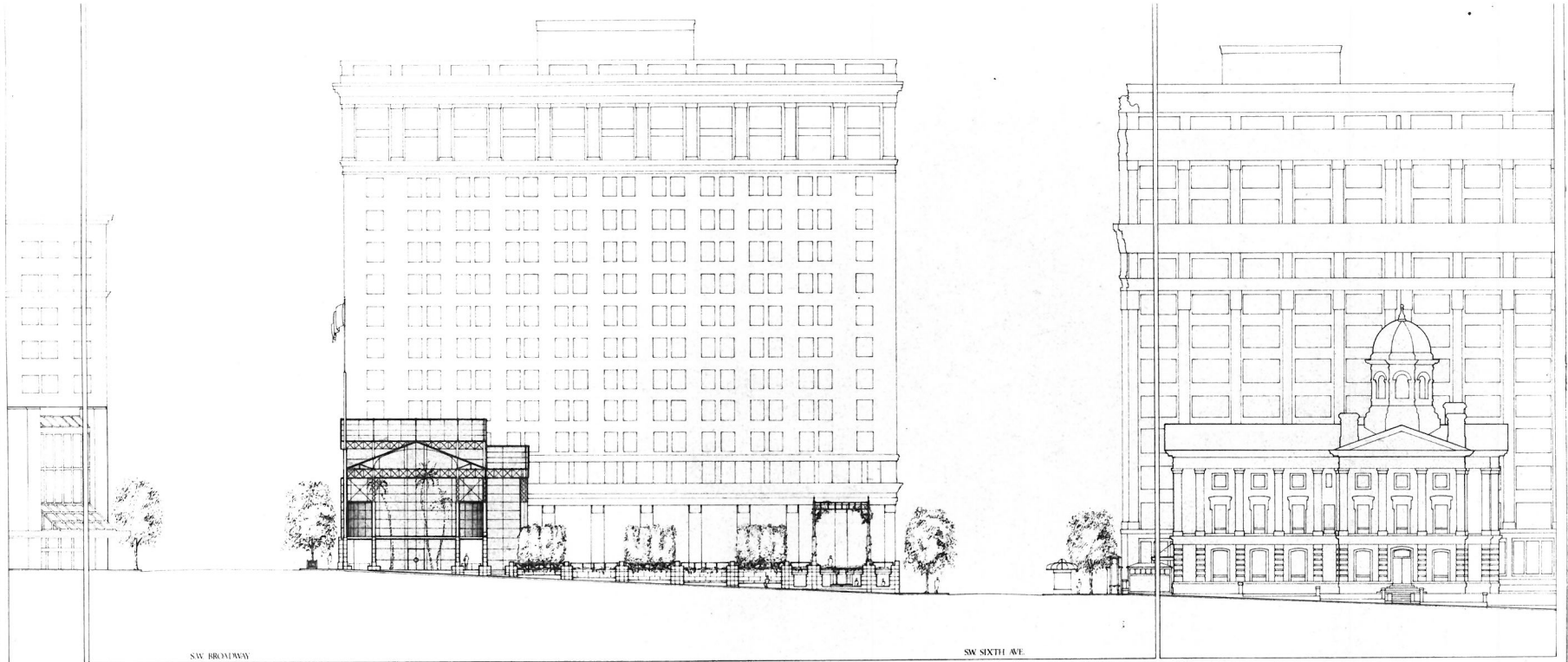
ELEVATION LOOKING EAST



ELEVATION LOOKING WEST



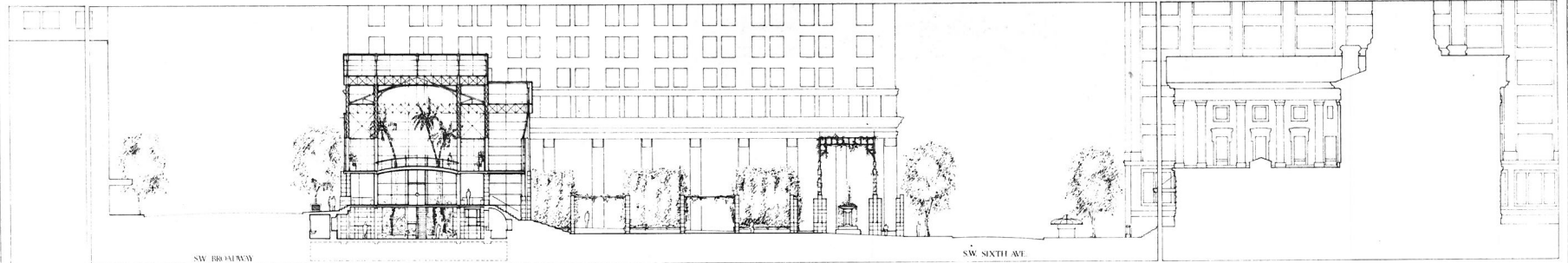
SECTION AA' LOOKING WEST



SW BROADWAY

SW SIXTH AVE

ELEVATION LOOKING NORTH



SW BROADWAY

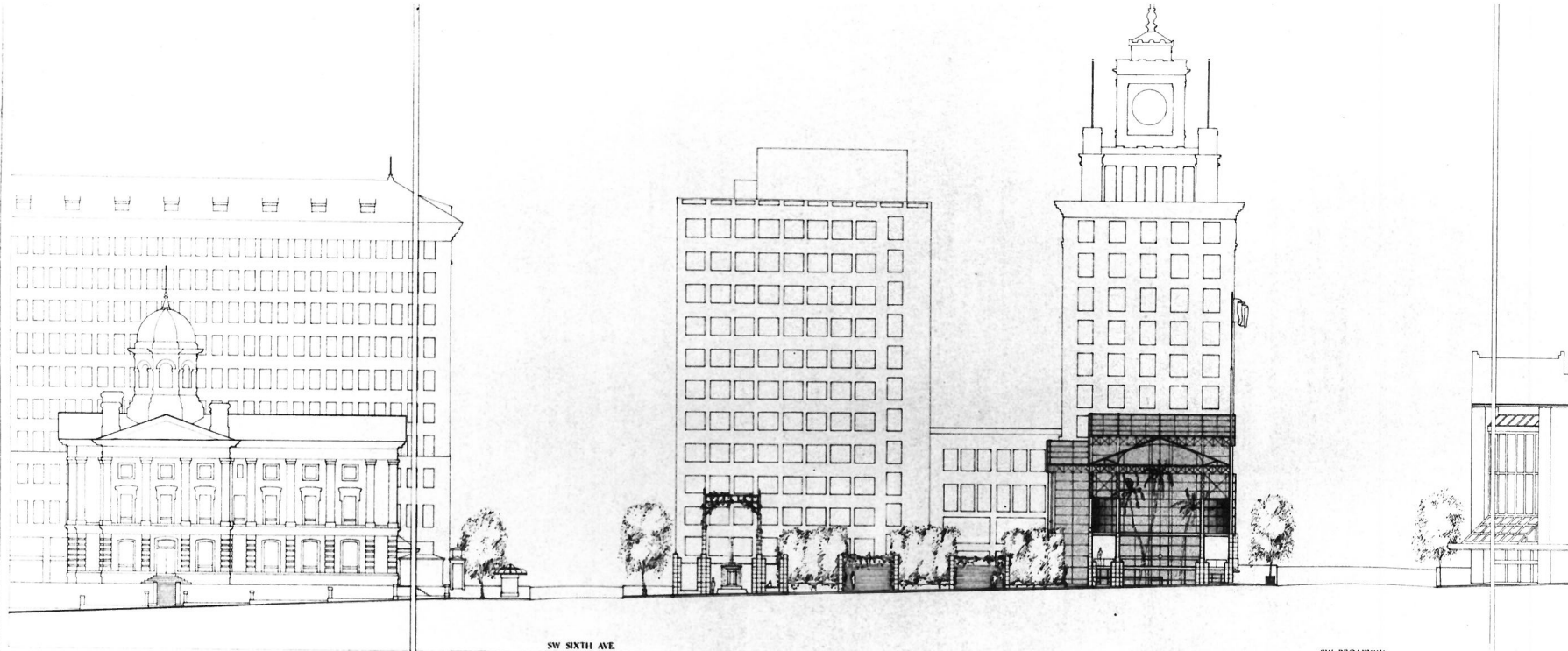
SW SIXTH AVE

SECTION B-B' LOOKING NORTH

ELEVATION & SECTION

PIONEER SQUARE

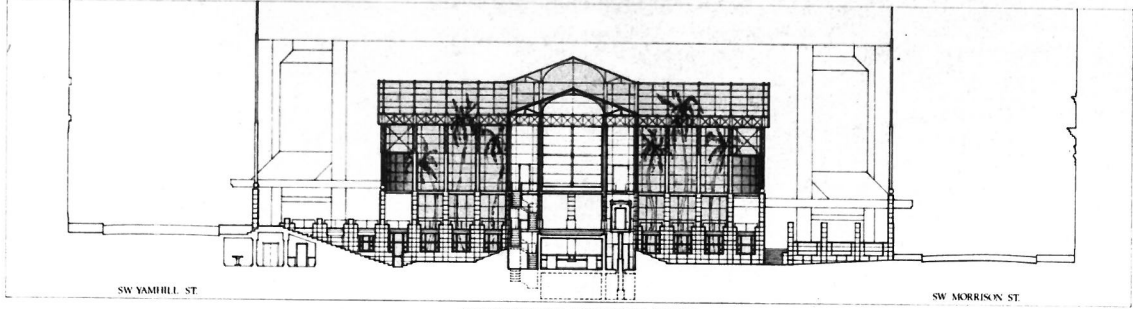
BOARD SIX



SW SIXTH AVE

SW BROADWAY

ELEVATION LOOKING SOUTH



SW YAMHILL ST

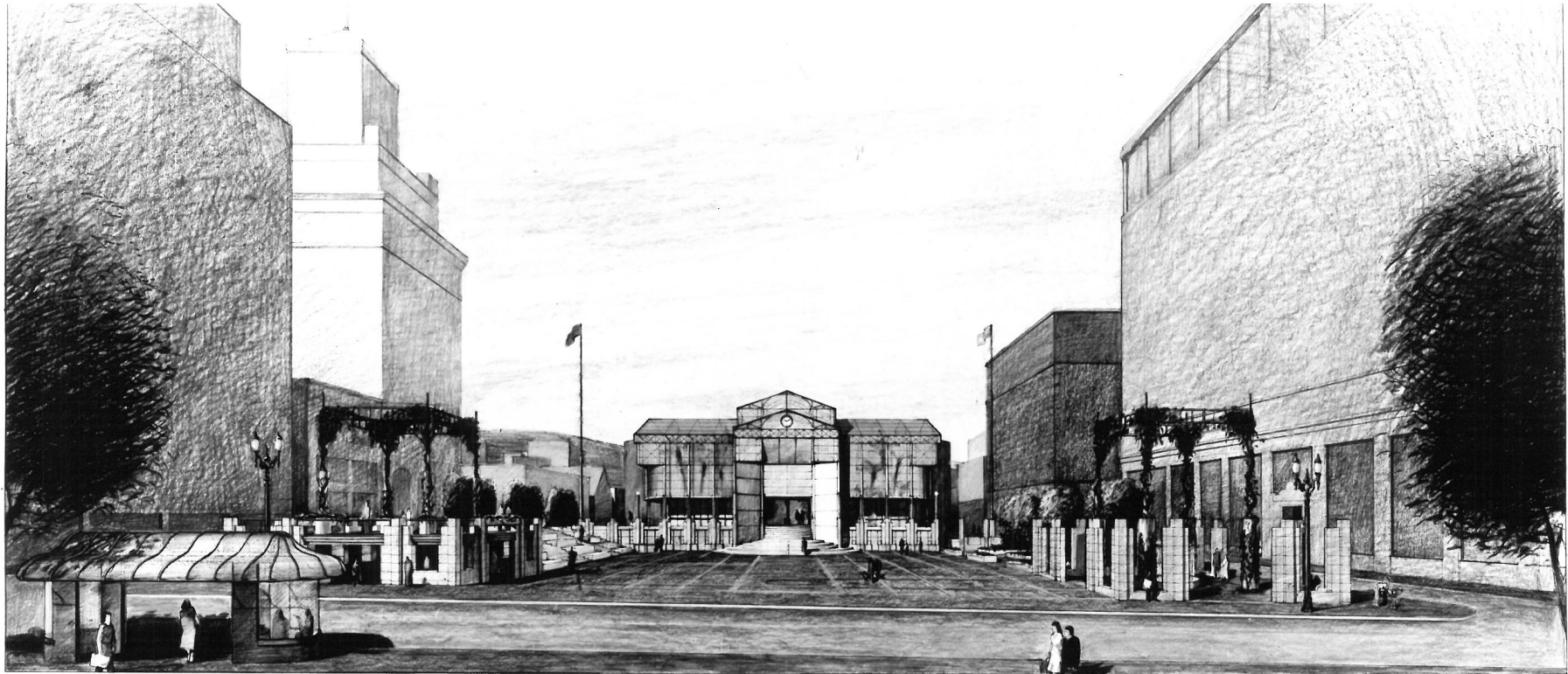
SW MORRISON ST

SECTION CC' LOOKING WEST

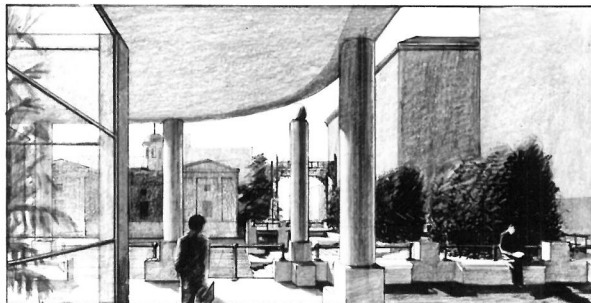
ELEVATION & SECTION

PIONEER SQUARE

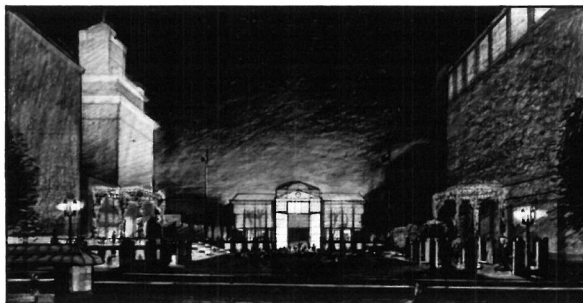
BOARD SEVEN



PIONEER SQUARE AS SEEN FROM THE POST OFFICE ENTRANCE



A VIEW FROM THE YAMHILL SIDE OF THE BUILDING



PIONEER SQUARE - EVENING SCENE

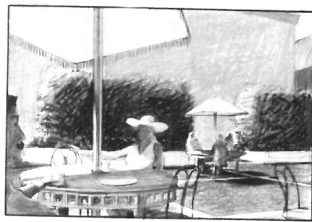


FOUNTAIN GAZEBO AT MORRISON AND SIXTH

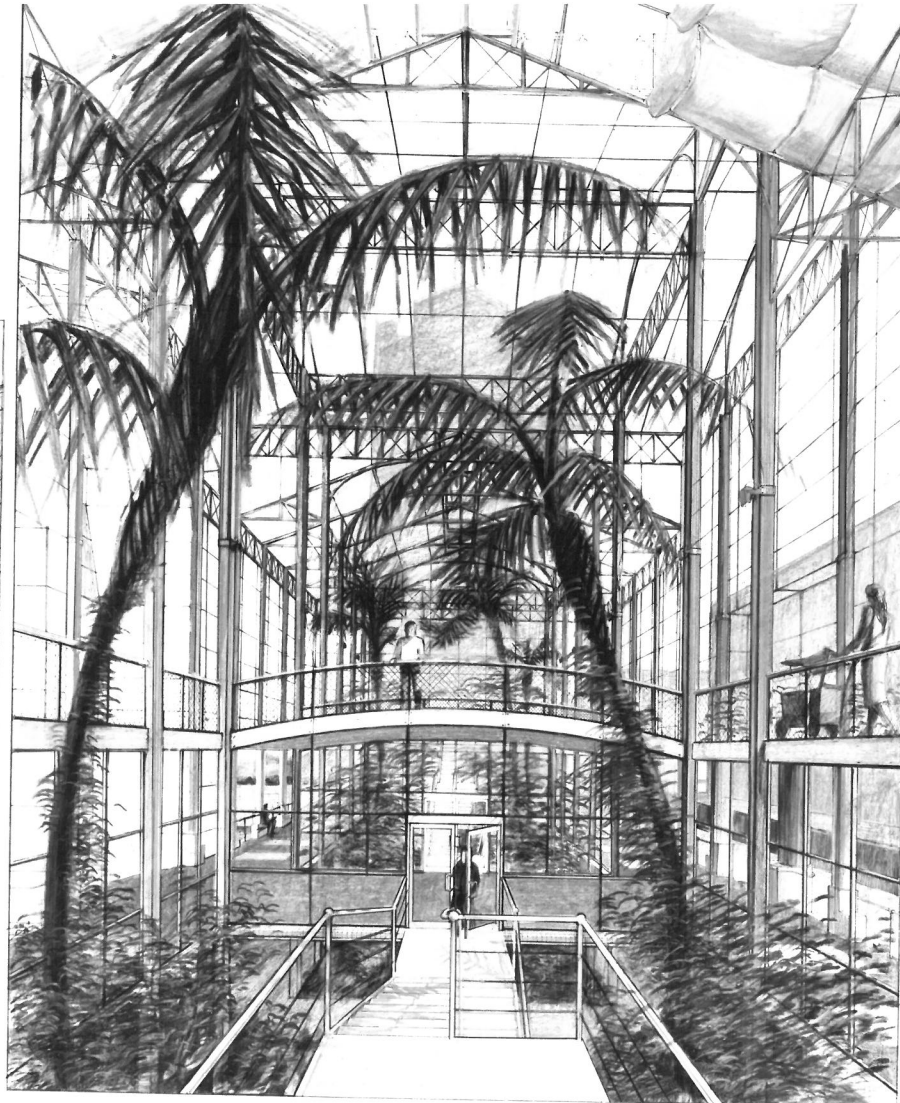
PERSPECTIVE VIEWS

PIONEER SQUARE

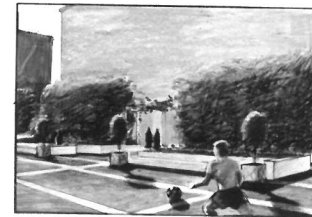
BOARD EIGHT



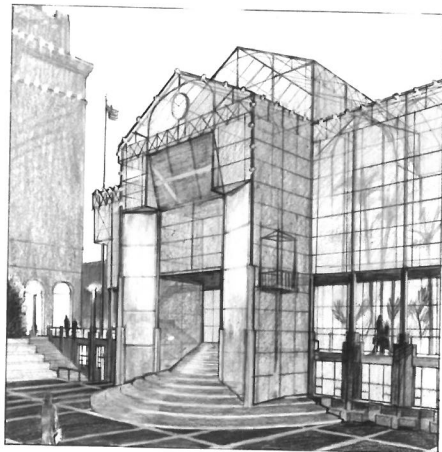
OUTDOOR CAFE



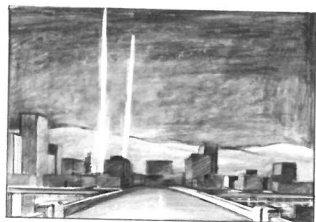
INTERIOR VIEW



PLAYING ON THE SQUARE



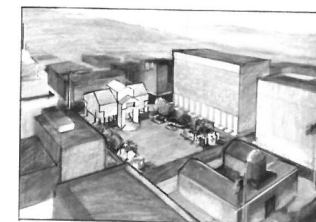
ENTRANCE FROM THE SQUARE



VIEW FROM ACROSS THE RIVER



BROADWAY ENTRANCE WITH EXHIBITION BANNER

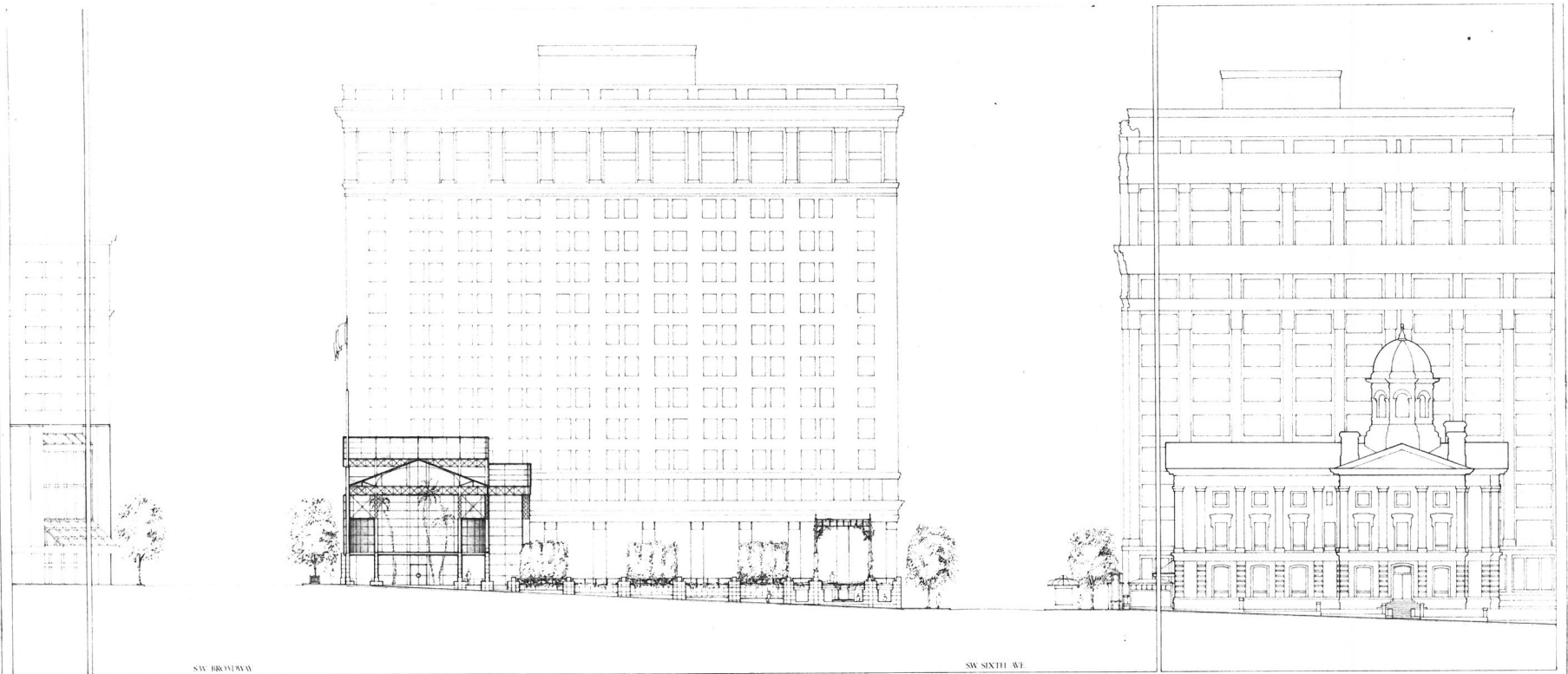


VIEW FROM ABOVE

PERSPECTIVE VIEWS

PIONEER SQUARE

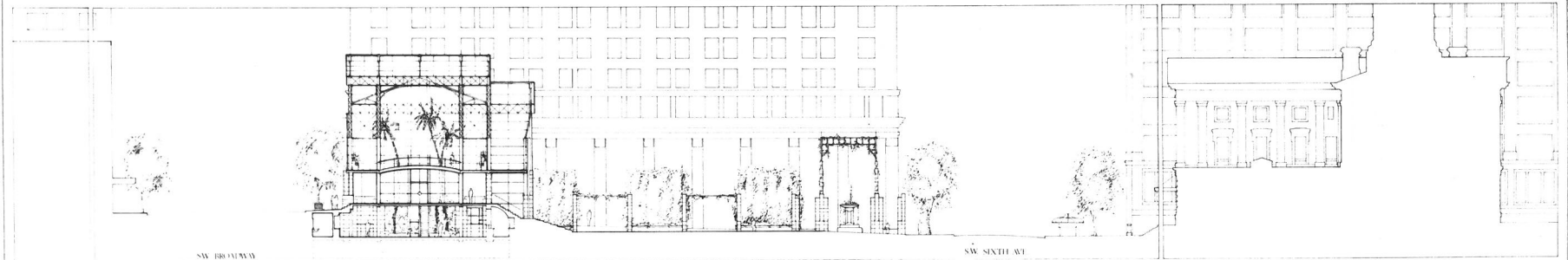
BOARD NINE



SW BROADWAY

SW SIXTH ST

ELEVATION LOOKING NORTH



SW BROADWAY

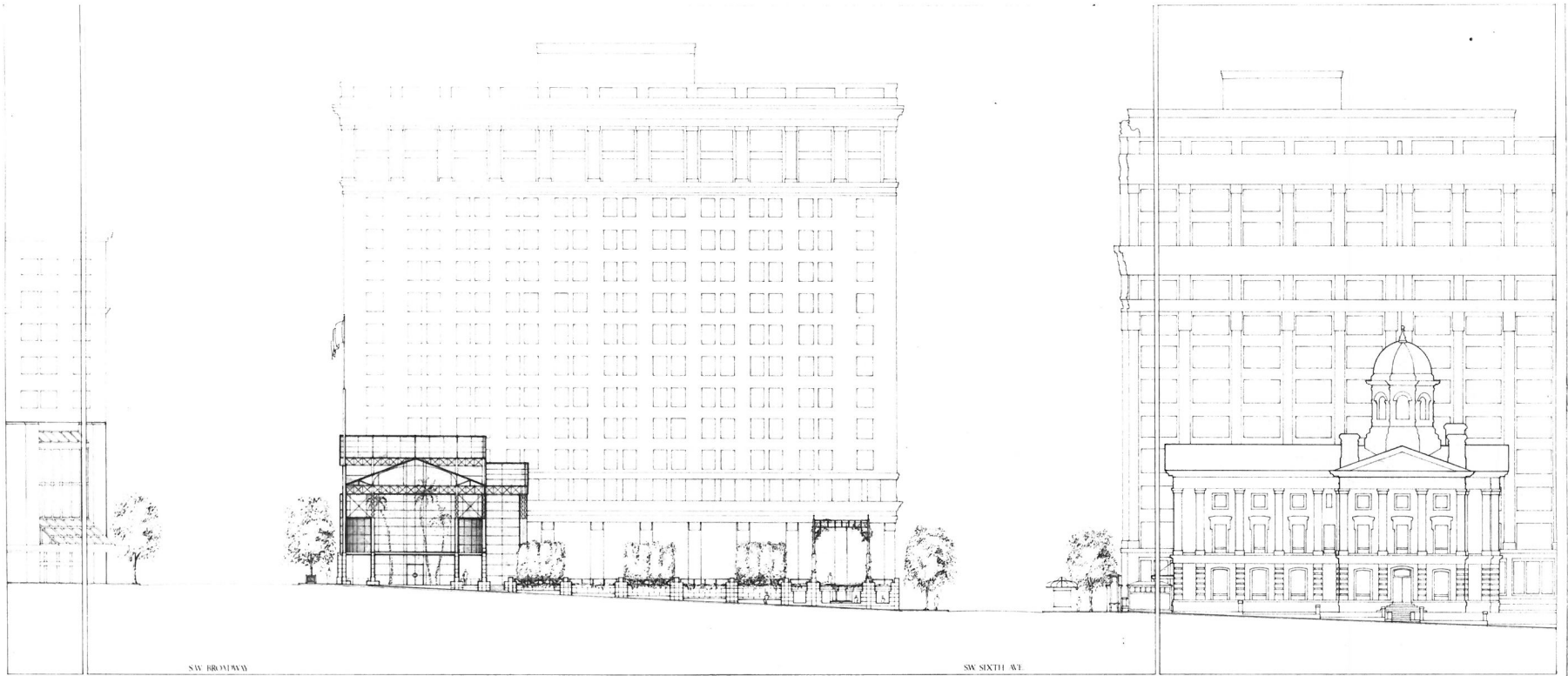
SW SIXTH ST

SECTION BB' LOOKING NORTH

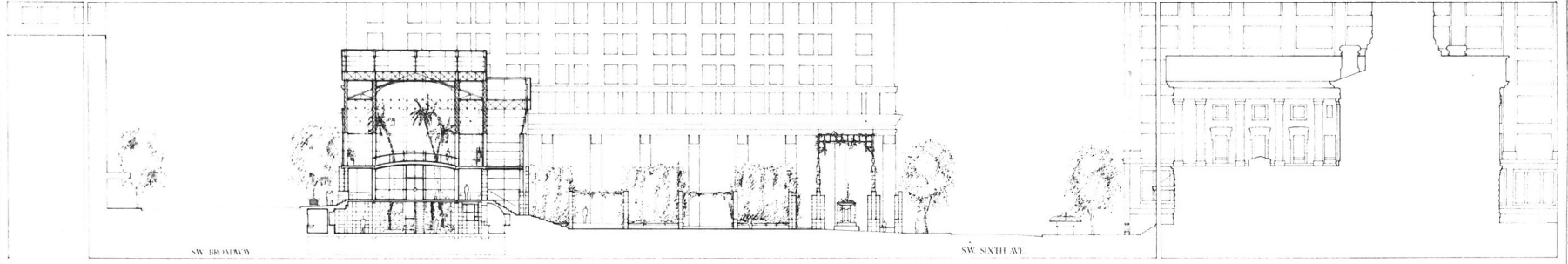
ELEVATION & SECTION

PIONEER SQUARE

BOARD SIX



ELEVATION LOOKING NORTH



SECTION B-B' LOOKING NORTH

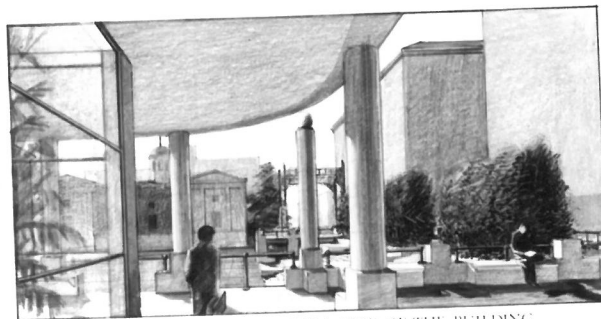
ELEVATION & SECTION

PIONEER SQUARE

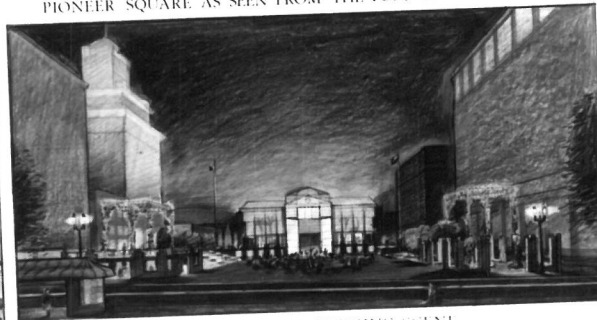
BOARD SIX



PIONEER SQUARE AS SEEN FROM THE POST OFFICE ENTRANCE



A VIEW FROM THE YACHT CLUB SIDE OF THE BUILDING



PIONEER SQUARE - EVENING SCENE

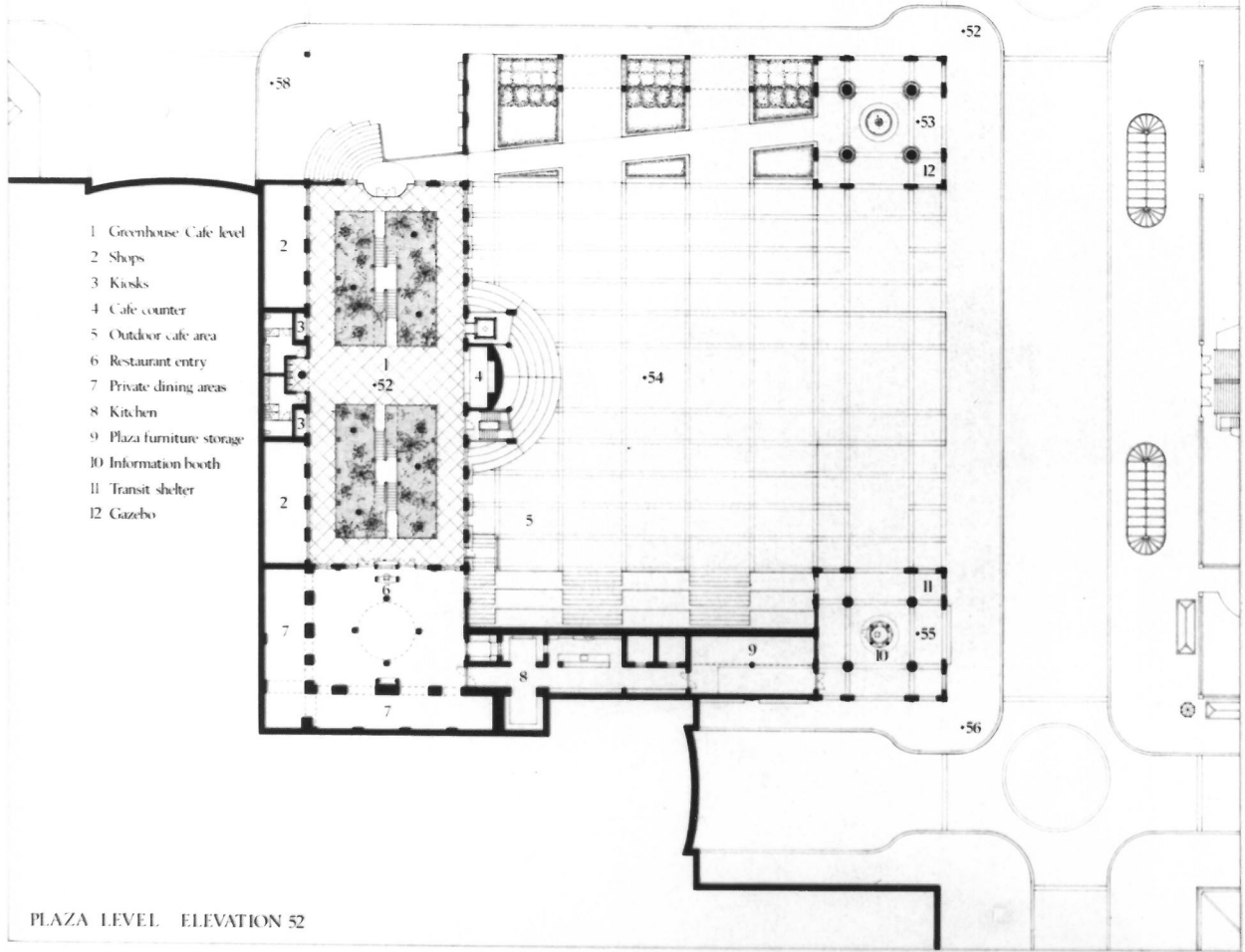


FOUNTAIN GAZEBO AT MORRISON AND SIXTH

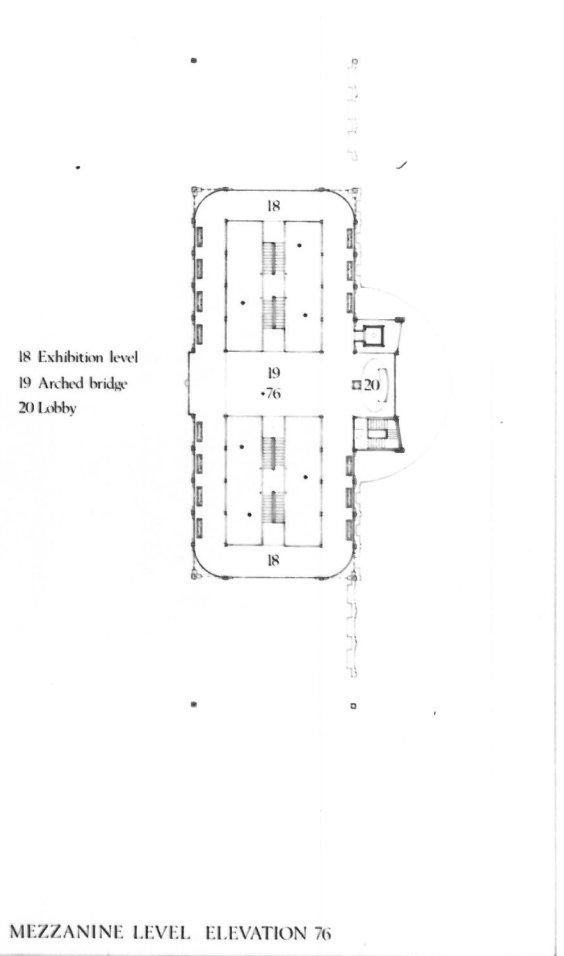
PERSPECTIVE VIEWS

PIONEER SQUARE

BOARD EIGHT

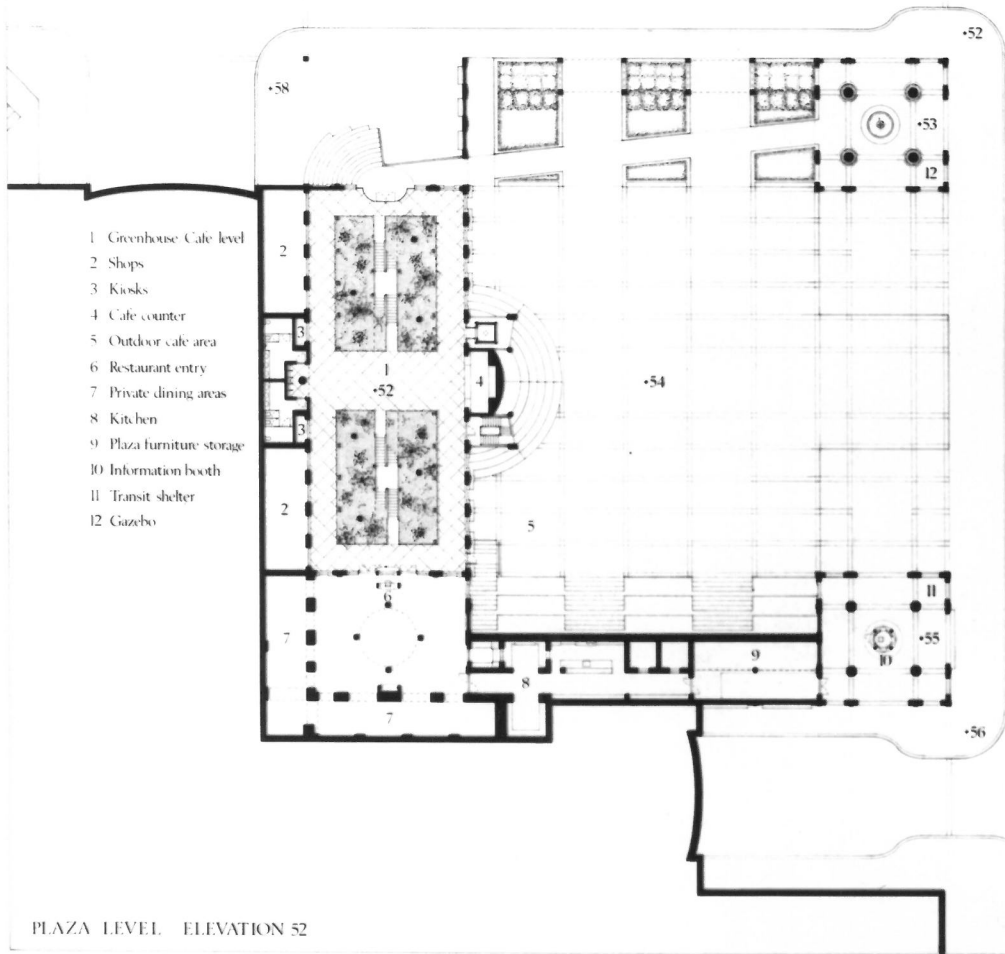


PLAZA LEVEL ELEVATION 52

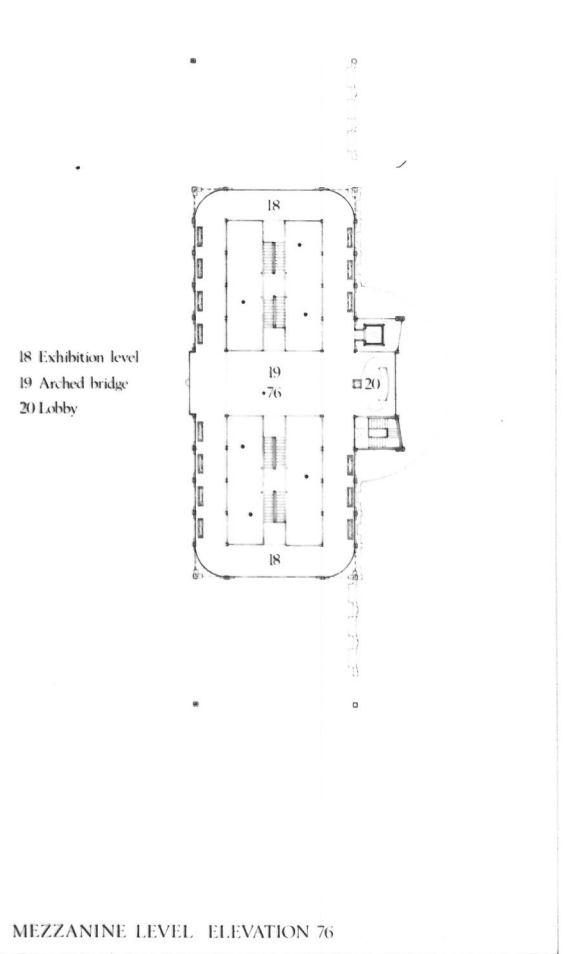


18 Exhibition level
19 Arched bridge
20 Lobby

MEZZANINE LEVEL ELEVATION 76



PLAZA LEVEL ELEVATION 52



MEZZANINE LEVEL ELEVATION 76

CONTROLLING CONCEPT

AIMS

The aims of this design are:

1. To make an exemplary American urban public place, a model of civility for the new urban consciousness that marks the developments of the last decade. As such, this design could be the first materialization of a building type that can be seen as today's equivalent of the "cathedral-city hall-market place" of the medieval city. This building type is hybrid in nature because it results from the blending of various different building types: it contains elements of the urban *Green House* of the kind meant to be for the enjoyable display and not just for the cultivation of plants of the *trades* with shops, of the *Palm Court* (with its natural complements, the restaurant and the cafe), and of the *Ushakov Hall*, consequently, to identify this building with any one of these labels inevitably impoverishes the image and potential of the building, which is all that, plus something else. It is not, we think, too presumptuous to assume that perhaps in years to come this type will be referred to as the "Portland version of the city square." We feel it is important to explain these intentions of ours clearly for it is our strong conviction that the attitude from which this project is borne is *progressive*, optimistic and forward looking since it provides something new for the community, and in so doing it contributes a different way of dealing with public places in America yet *traditional* because it uses and reinterprets bits and pieces of everyone's memories and images of public places and is, as such, much in accordance with Portland's history, spirit and cultural identity.

2. To create a public place, complete and rich in associations with evocative power, a place characterized by:
Flexibility - a place which can accommodate many uses today and, as well, accept future physical changes that will naturally occur in a number of years without it losing its essence and distinctiveness; the history of urban design teaches that good places are the result of the respectful aggregation of pieces and minor changes over time, which do not, however, change their essential features.
Flexibility - a place whose meanings or content are understood by all, because it speaks a fine version of a common language - a place that clearly conveys the absence that a variety of public functions requires as backdrop or device for their proper performance; in other words, a place that works well symbolically as well as functionally.
Durability - a place produced beyond the misadventures of fashion and private whims, a permanent, somehow timeless place, calm and aesthetically enduring.

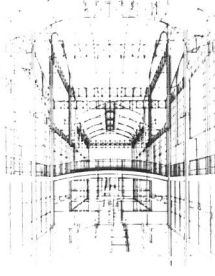
3. To respect and enhance the physical and symbolic features of the site.

THE SITE

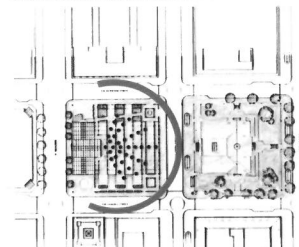
There are some very strong features of the physical context with which we have worked:

1. The regular, orthogonal, small size square grid of downtown Portland.
2. The "room-like" configuration of the site, its condition of "void" shaped by the constant high walls around it.
3. The objective, classical nature of the Pioneer Courthouse, its frontality and most importantly its axuality, which visually bisects the site.
4. The topography.

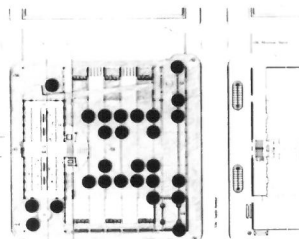
There are also some facts from the past of the site that have "influenced" our work: images of the old School House and of the Grand Hotel that occupied the site later - both important civic structures, both classical, both, in a way, monuments to the community life and cultural continuity of Portland.



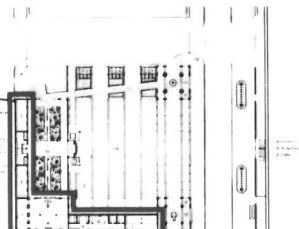
POTENTIAL COMMERCIAL DEVELOPMENT
Small Scale Retail Zones and SW Broadway Arcade Extension



PUBLIC GATHERINGS
Concerts, Theater, Dance



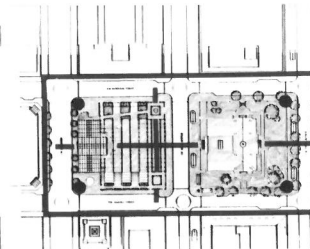
COMMERCIAL USE AND EXHIBITION AREAS
Markets, Arts and Crafts, Fairs



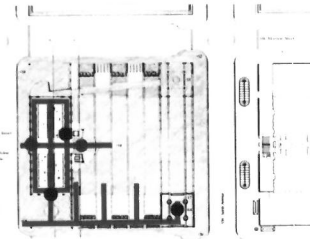
COMMERCIAL USE AND EXHIBITION AREAS
Markets, Arts and Crafts, Fairs



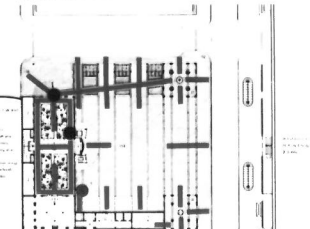
POTENTIAL TRANSIT DEVELOPMENT
Sidewalk Arcade and Light Rail Shelters



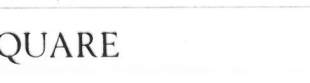
THE ENLARGED SQUARE
Ceremonial Space, Parade, Festivals, Processions



PERMEABILITY
Handicap Access to Blue



PERMEABILITY
Handicap Access to Blue



THE STRATEGY AND ITS RESULTS

In order to respect and enhance the physical and symbolic features mentioned above, our concept develops strictly within the orthogonal grid of the city divided into 40 x 40 squares which are established by the dimensions and the location of the Pioneer Courthouse within its block. In a single move the concept succeeds in strengthening the presence of the courthouse by acknowledging its frontality and responds to the implications of its axis by placing at the opposite end of the square a building which balances its position within the whole of the site. This building, the Palm Court, is located with central gable gables which open and close along with the structural support with the Courthouse across the way, thus removing the quality of "indifference" which seems to dominate the Broadway front of the Nordstrom Department Store. By placing the Palm Court as far away as possible from the Courthouse, three goals are achieved: first, as much square footage as possible is allocated to the square proper; second, the building alignment along Broadway is completed, which greatly enhances the urbanity of this major street; and, third, the Palm Court will view the square from the corners, through the glass structure of the Palm Court and through the central passage to the square; and third, such a location for the Palm Court allows for an experientially enlarged square with the Pioneer Courthouse clearly a part of it.

To reinforce the appropriation of this space, four high flagpoles, together with search lights at special events, are placed at the corners of this "enlarged" square which is then to be inhabited by a pair of major objects, the Courthouse and the Greenhouse, both sharing common grounds, one monumental, the other festive, one opaque the other transparent, one in granite, the other in glass. As a result of these choices, Pioneer Square will then be perceived effectively as being adjacent to the Fifth Avenue mall, an effect which will void *limits of organization and constraints of scale* besides benefiting the commercial facilities of the area - to the entire downtown area. In this way, the success of the already built mall will be further guaranteed and Portland, a city already graced with numerous parks, public gardens and fountains will have an unique city square.

The principle elements of our design, in essence, are three: the Square, the Greenhouse and a variety of minor pieces.

The square itself is a floor, the public arena, the urban carpet, a stage in itself and also the setting from which to view another possible stage formed by the grand landing of the passage from Broadway to the square; this floor could be a dance floor, for high school performances or for far more intimate moments on warm nights; the floor is a playing field; it receives the overflow of the assemblage of open air exhibits, arts and crafts fairs and flea markets, lunchtime or Saturday night concerts, sunbathing or an afternoon stroll. Because it will be unique as a space and the spot for special events in the minds of the life of the Downtown area it will indeed be constantly busy and will serve as a point of attraction for the people of Portland. To facilitate a variety of functions, convenient storage for the square's occasional furnishings have been provided.

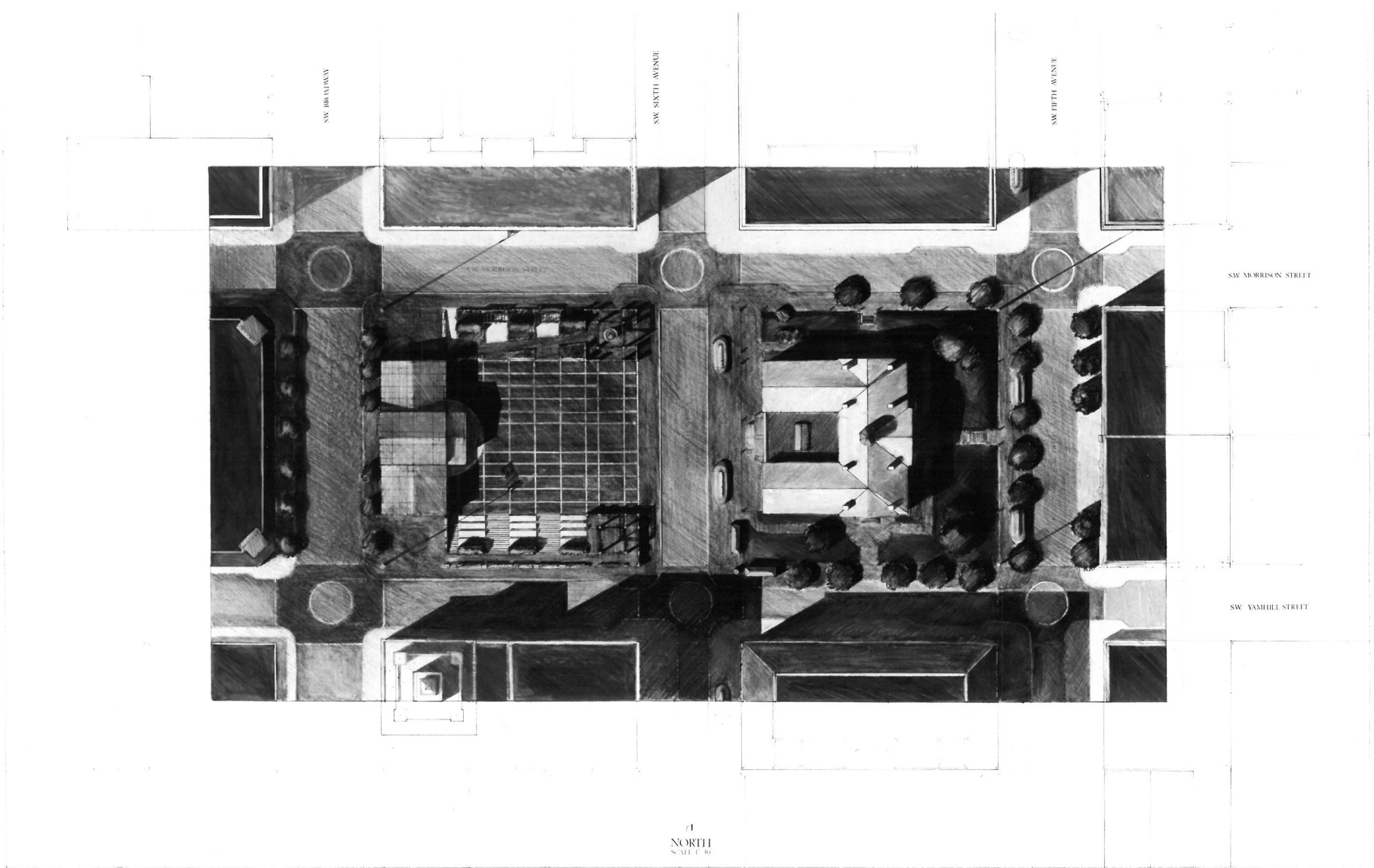
The building is an open "palace" with multiple doors - at the lower and upper levels, in the center and at the ends - everyone can pass through walking as if in mid-air among the foliage of the trees within, like in a tree house, or to buy passage through controlled entrances for the viewing of special exhibitions at the upper level while always at the same time with a view of the square below and beyond. It is a generous building; its peripheral arcades offer refuge from the sun and balconies and benches overlooking the square; it offers to the passerby its forever green interior, like a delicate elephantine box of flowers, like a gift from the city to its citizens; from the square, at night, with its protective awnings up high drawn closed, it will glow like a carnival tent; from the square at night, ready for a concert, its edges lined with bright yellow theater lights it will be like an abstract glass eagle perched high on the square. - At another level, the building will contain a restaurant and a tea room, both with equally special views of the square, and shops that will perpetuate and nourish the market-place characteristics of the area. A special building, indeed, that encourages access to it and through it to the square; a building continuous, involved with community affairs, the city's lobby, a reliable and trendy meeting place and surely a major pole of attraction for the city.

The smaller pieces, sometimes holding a complimentary position with respect to the floor and the building, sometimes holding a life all of their own are: the fountain garb, with its benches and pergola laced with roses and wisteria, the covered shelter at the opposite corner, with the general information booth and access to storage areas for both the square and the restaurant, the promenade overlooking Yamhill St. and the square below, with its canopy of planes, benches and cypress trees, leading to the garb on top of the refuge, a privileged balcony overlooking the square, the rose gardens along Morrison leading toward the square, the elliptical steps descending into the building at the corner of Broadway and Morrison, a casual theater for casual - or perhaps not so - performances, and a few more to be found by one's imagination.

These three basic elements of our design and particularly their interrelations allow for something we have already mentioned in the first paragraph and that we consider of the greatest importance: the *variety of scales* and the *flexibility of uses today and for future changes*. The following set of graphs will illustrate these points, we hope, clearly.

Essentially, then, the square is of a double nature - private and public, quotidian and ceremonial - which are generated by the overlapping of civic axes - linear, symmetrical and reassuringly monumental because every proud community requires and deserves monumental and private parts, non linear and asymmetrical, delicate and almost domestic in scale: individual yet belonging to everyone, a collection of a variety of focal points.

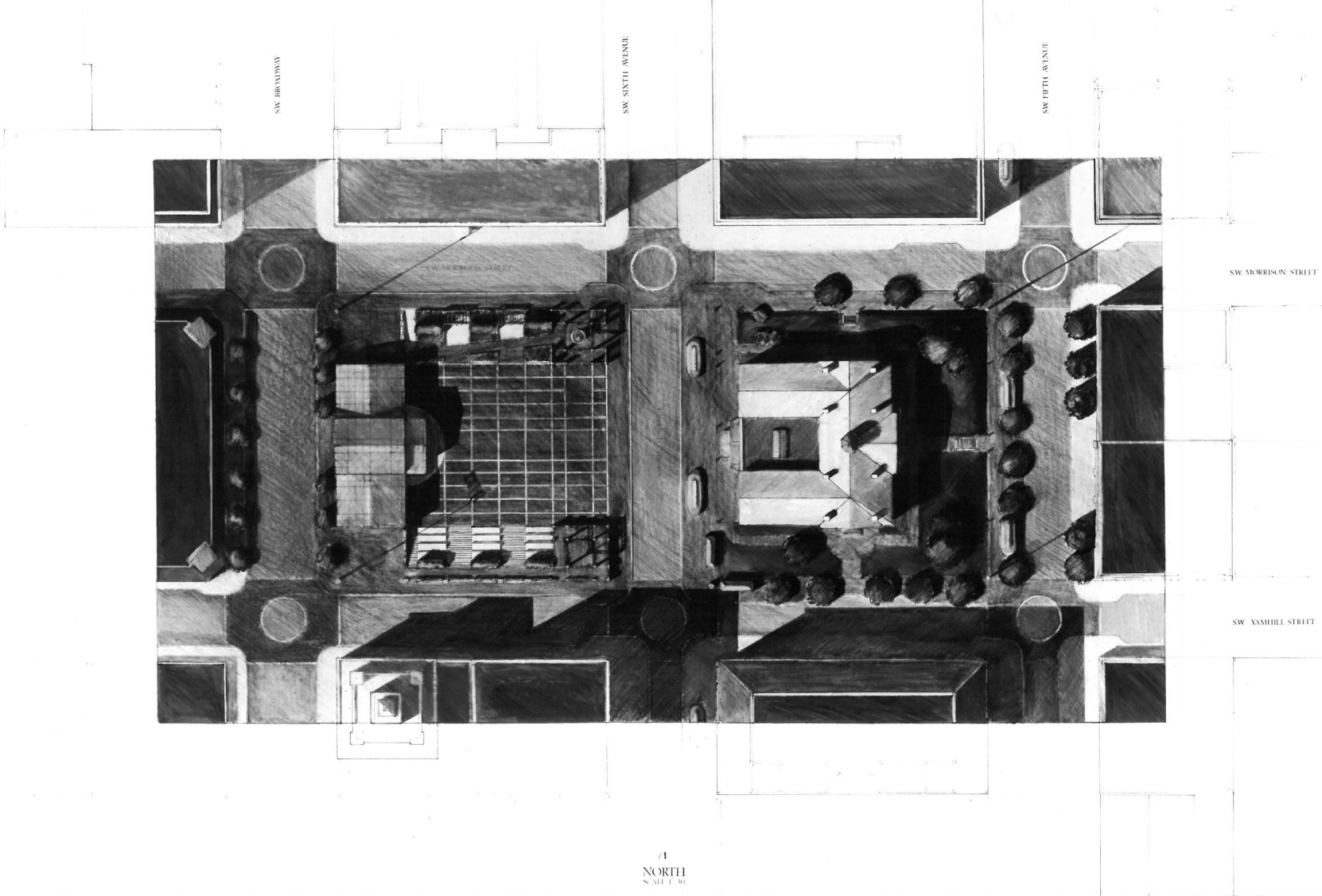
All of this together should in all certainties provide a memorable place, for Portland visitors to photograph, where tourists gather, browse and disperse to other points of the city, a place for other cities to emulate, a well tailored, proper place for Portlanders to enjoy.



SITE PLAN

PIONEER SQUARE

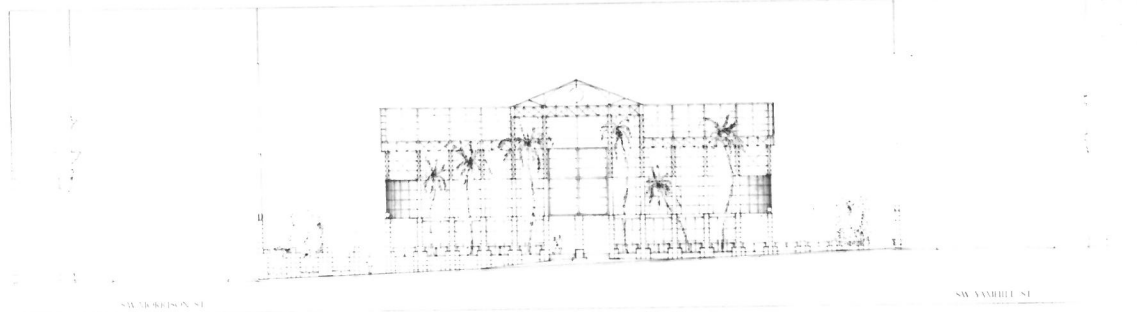
BOARD ONE



SITE PLAN

PIONEER SQUARE

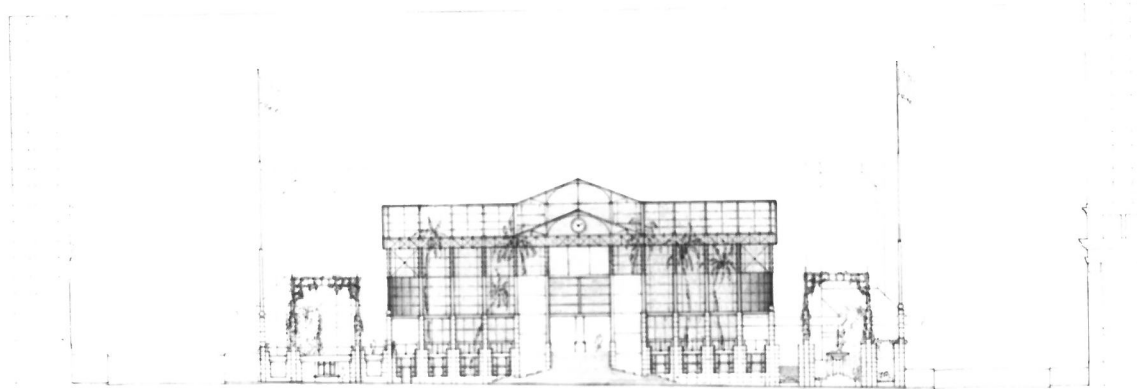
BOARD ONE



SW 4000 N ST

SW 4000 E ST

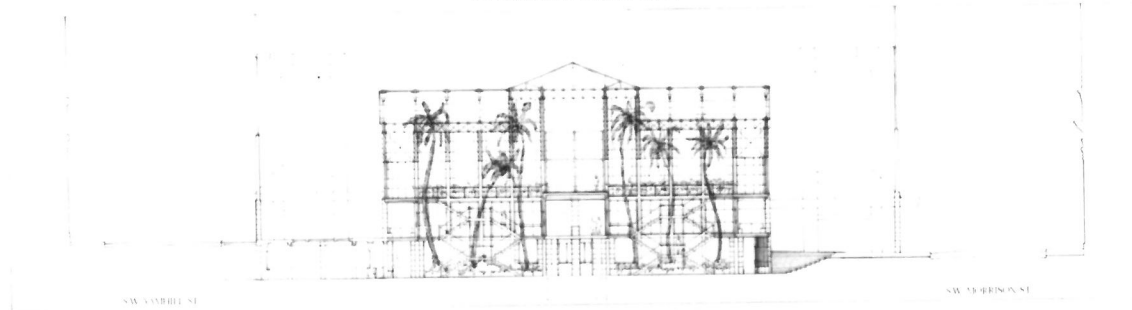
ELEVATION LOOKING EAST



SW 4000 E ST

SW 4000 N ST

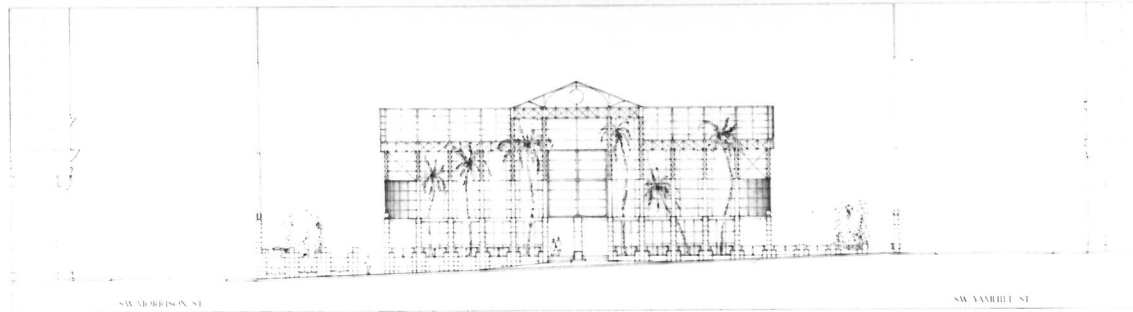
ELEVATION LOOKING WEST



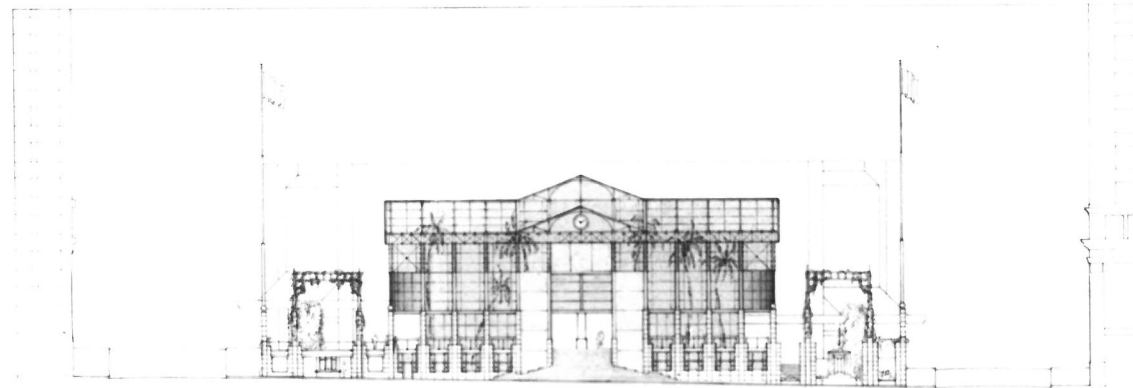
SW 4000 E ST

SW 4000 N ST

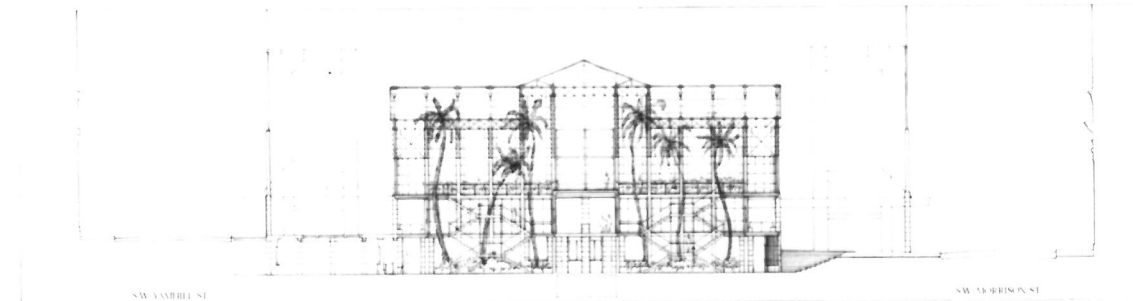
SECTION AX LOOKING WEST



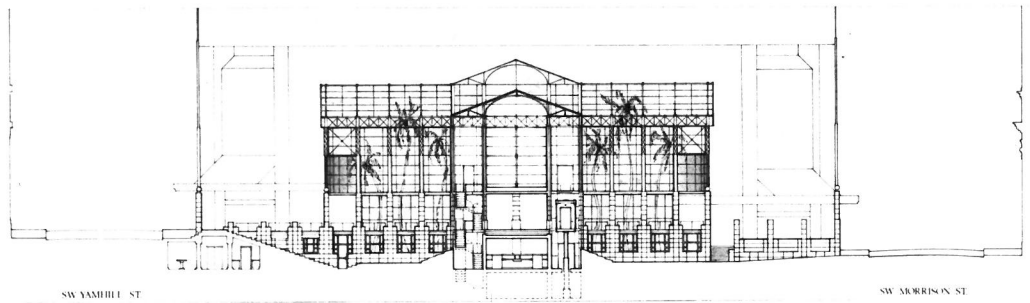
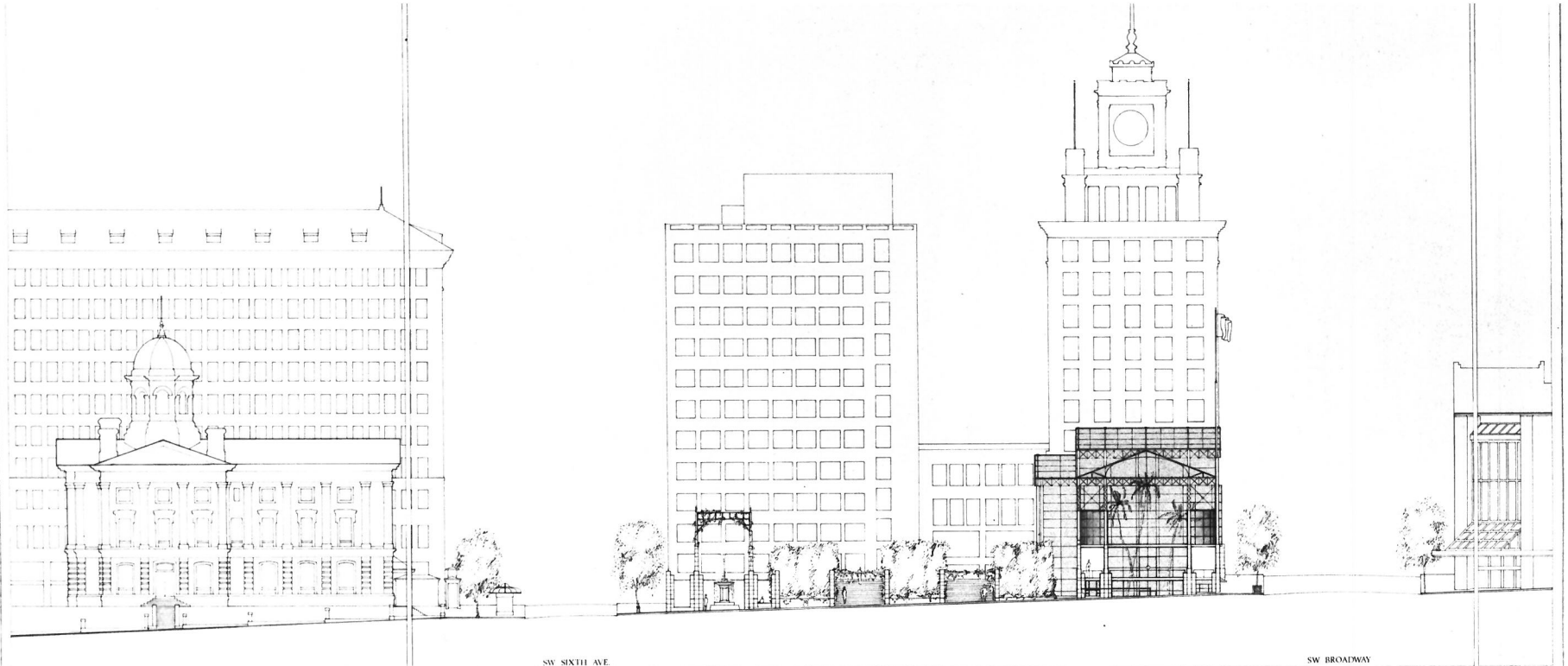
ELEVATION LOOKING EAST



ELEVATION LOOKING WEST



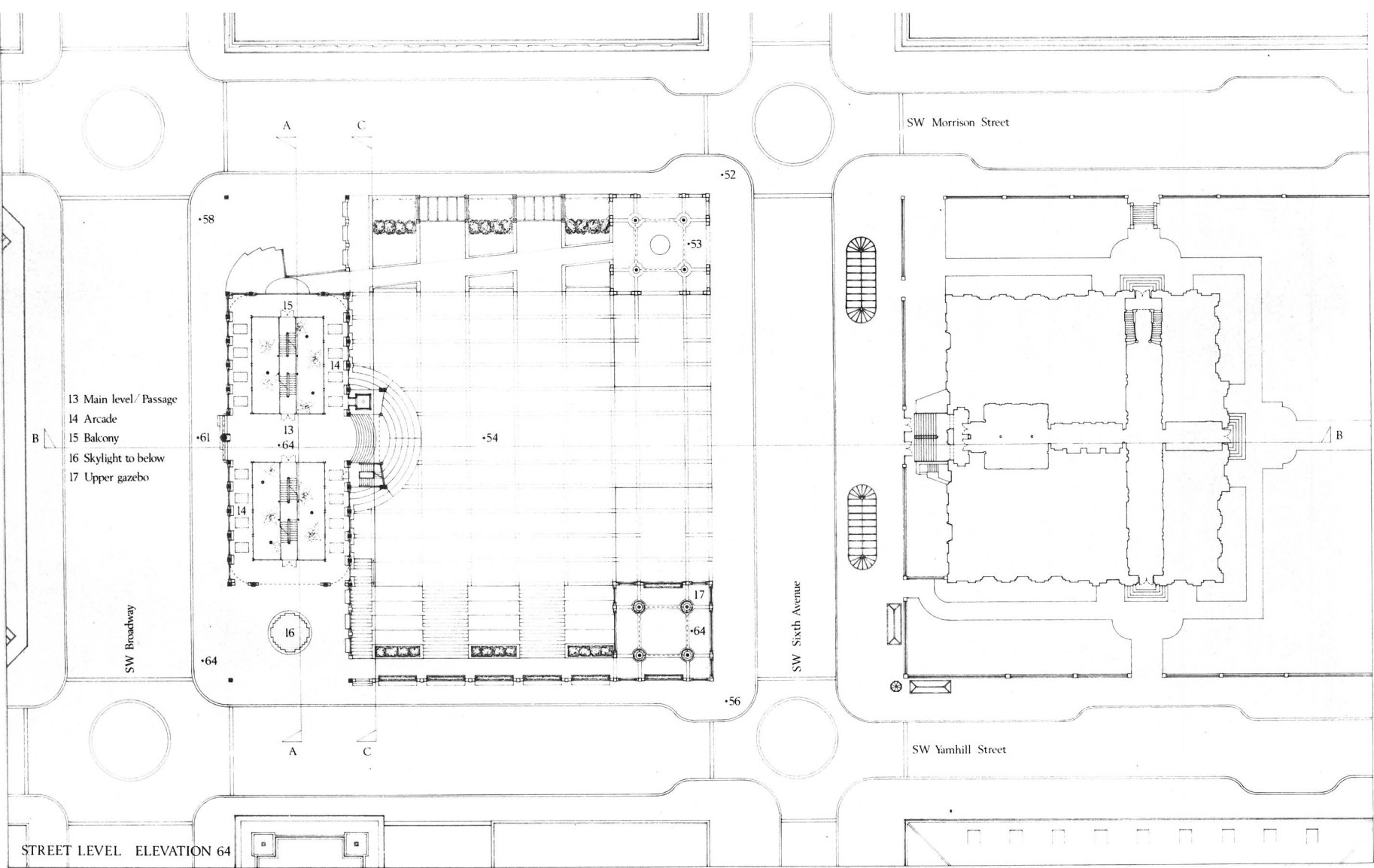
SECTION AX LOOKING WEST



ELEVATION & SECTION

PIONEER SQUARE

BOARD SEVEN

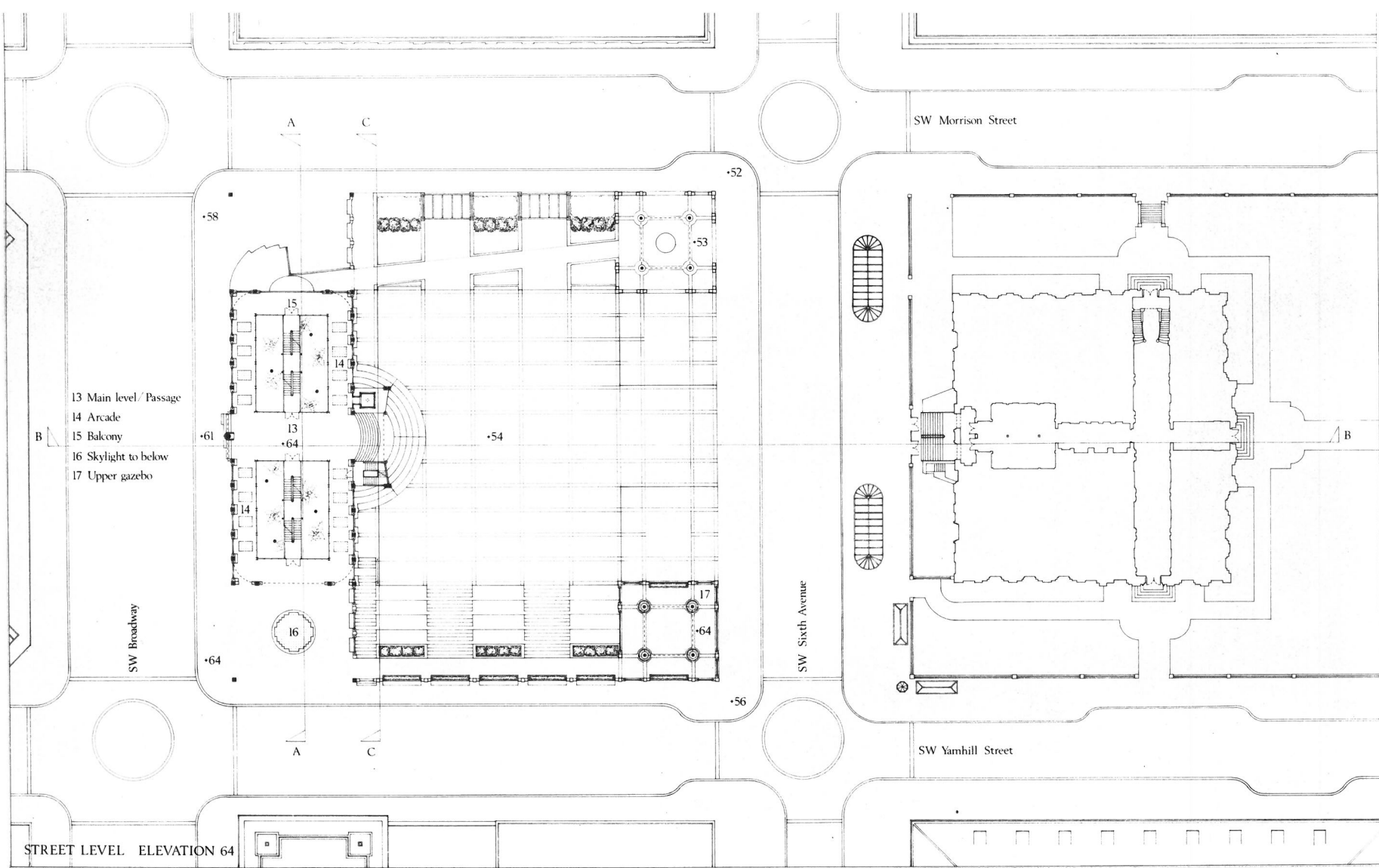


STREET LEVEL ELEVATION 64

PLAN

PIONEER SQUARE

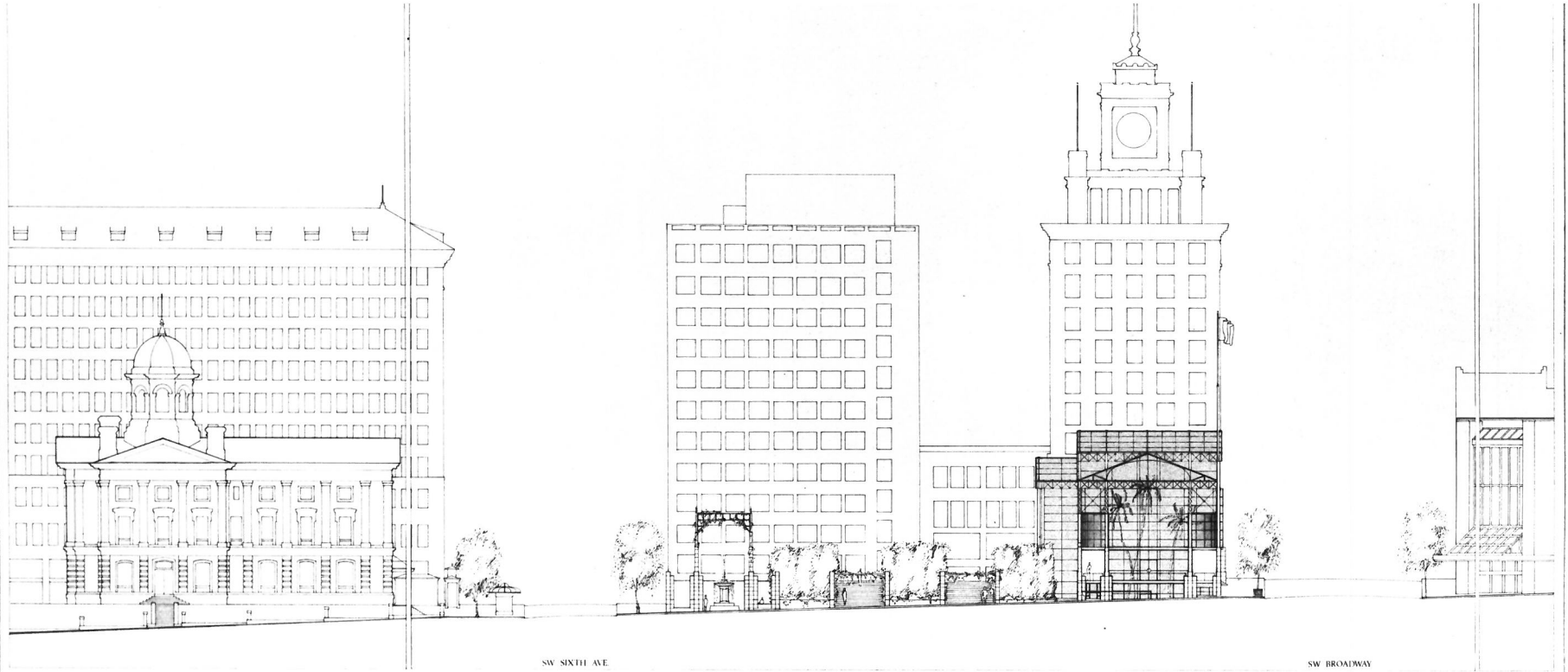
BOARD THREE



PLAN

PIONEER SQUARE

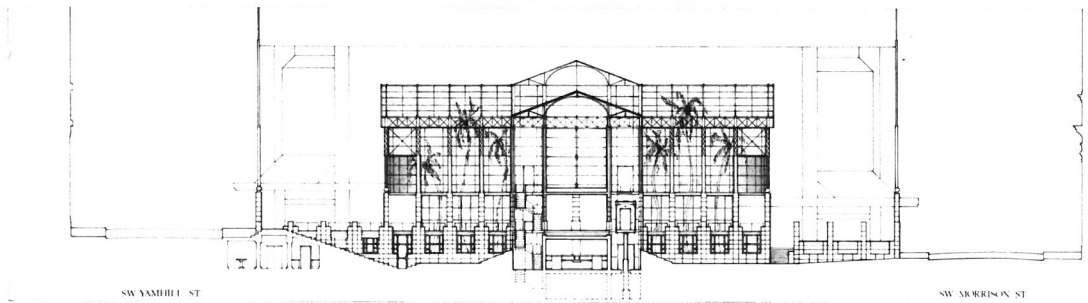
BOARD THREE



SW SIXTH AVE

SW BROADWAY

ELEVATION LOOKING SOUTH



SW YAMHILL ST

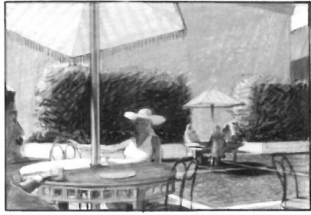
SW MORRISON ST

SECTION CC' LOOKING WEST

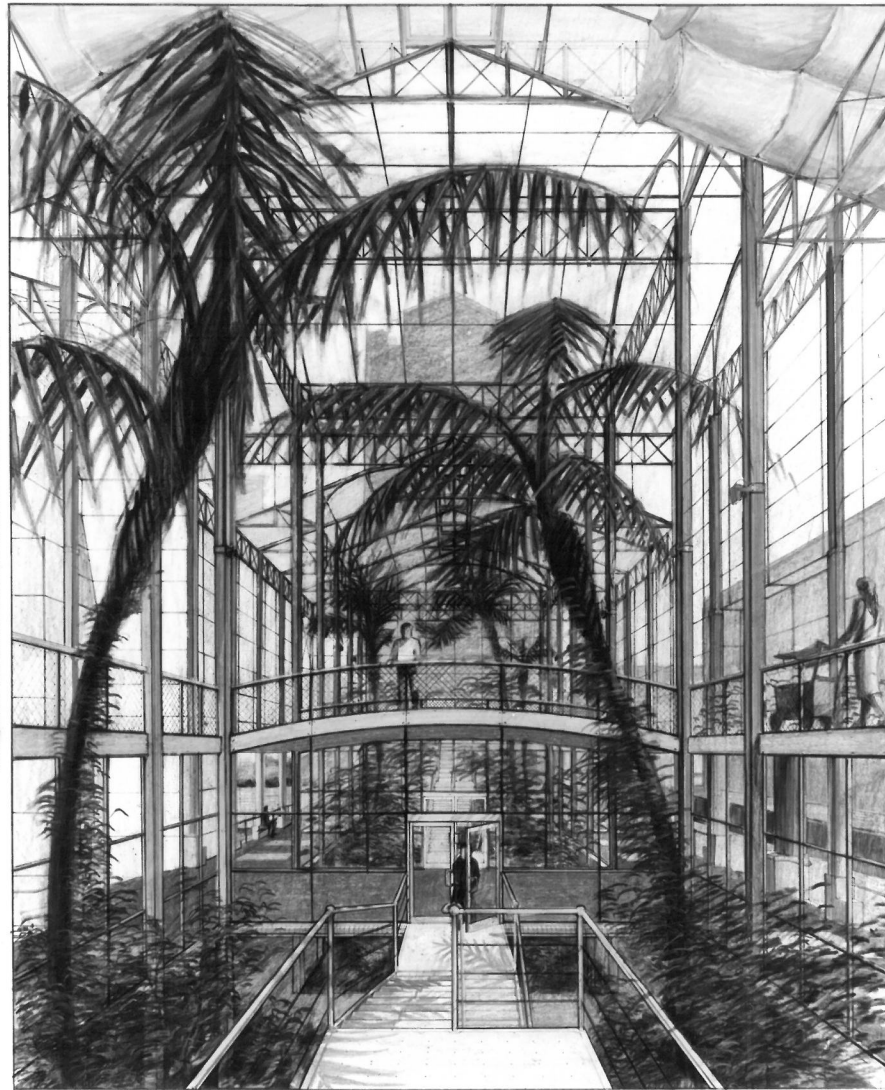
ELEVATION & SECTION

PIONEER SQUARE

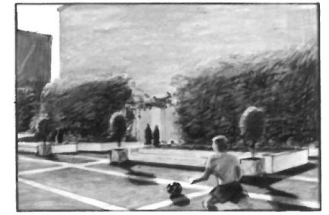
BOARD SEVEN



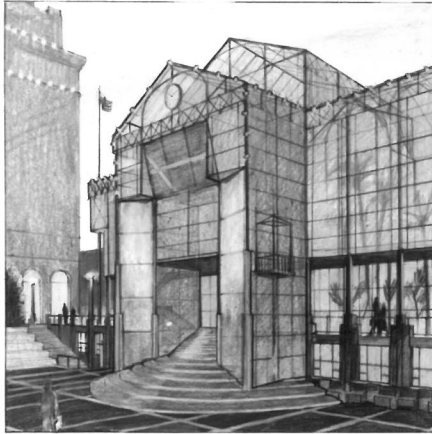
OUTDOOR CAFE



INTERIOR VIEW



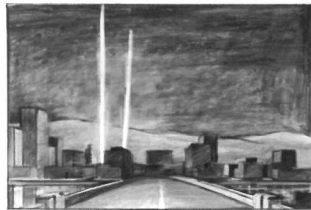
PLAYING ON THE SQUARE



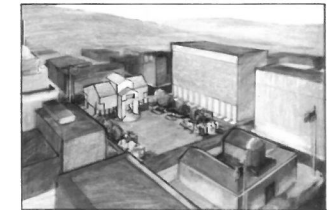
ENTRANCE FROM THE SQUARE



BROADWAY ENTRANCE WITH EXHIBITION BANNER



VIEW FROM ACROSS THE RIVER



VIEW FROM ABOVE

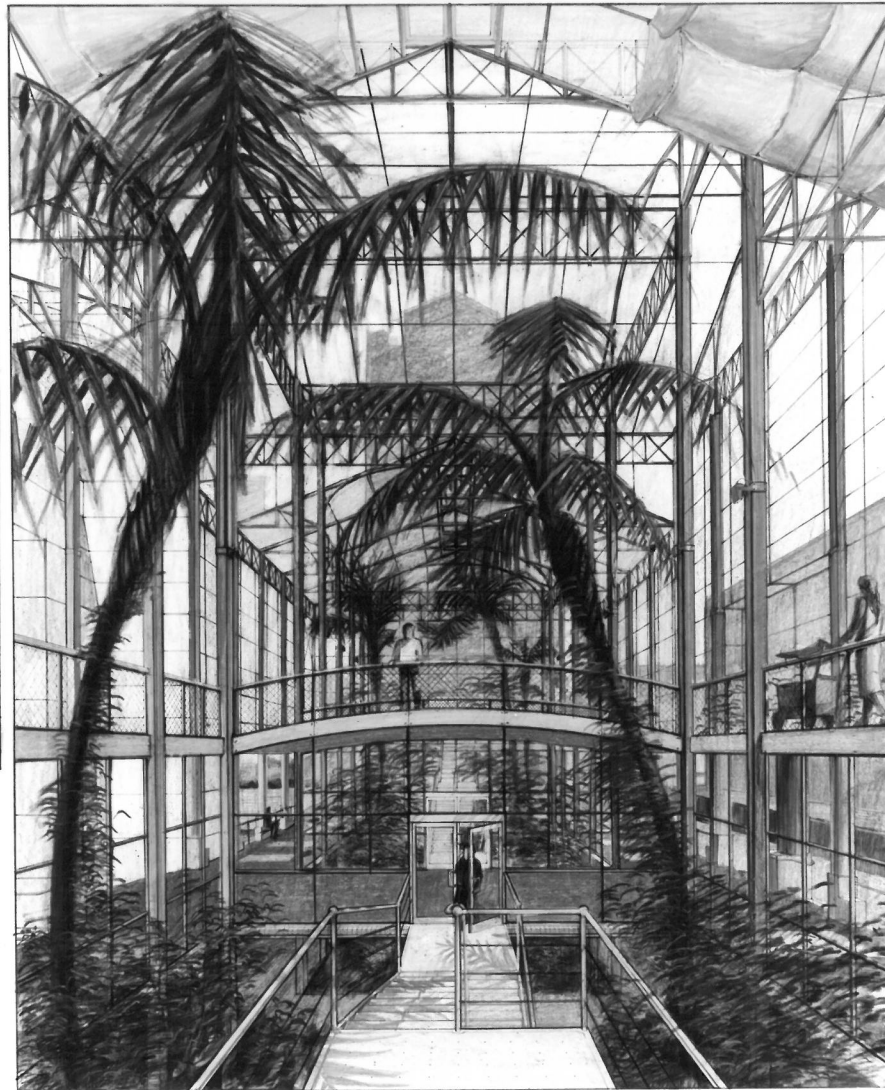
PERSPECTIVE VIEWS

PIONEER SQUARE

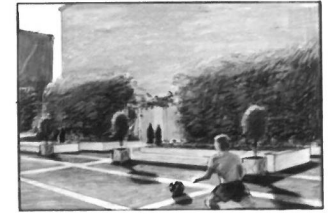
BOARD NINE



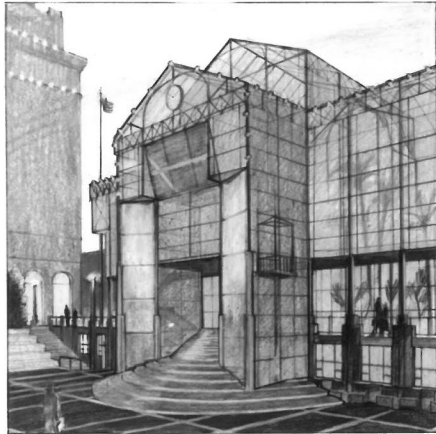
OUTDOOR CAFE



INTERIOR VIEW



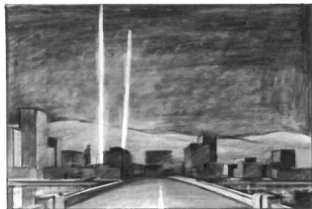
PLAYING ON THE SQUARE



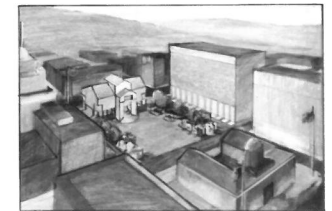
ENTRANCE FROM THE SQUARE



BROADWAY ENTRANCE WITH EXHIBITION BANNER



VIEW FROM ACROSS THE RIVER

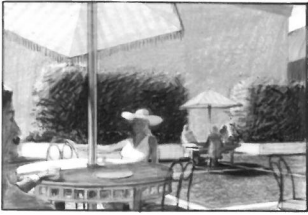


VIEW FROM ABOVE

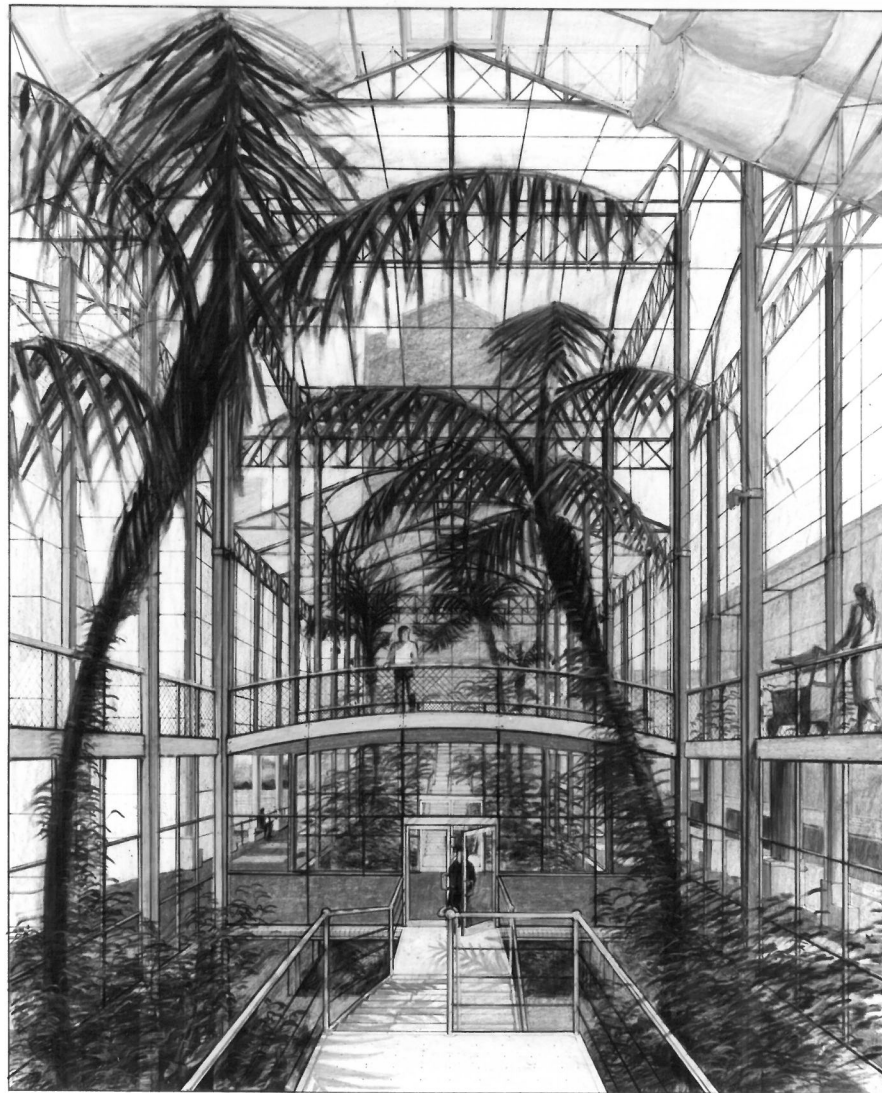
PERSPECTIVE VIEWS

PIONEER SQUARE

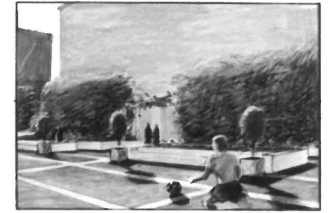
BOARD NINE



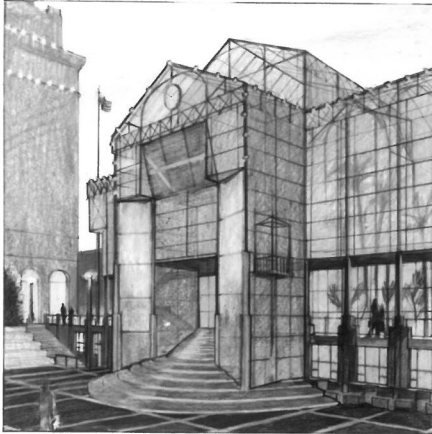
OUTDOOR CAFE



INTERIOR VIEW



PLAYING ON THE SQUARE



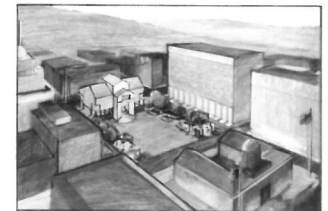
ENTRANCE FROM THE SQUARE



BROADWAY ENTRANCE WITH EXHIBITION BANNER



VIEW FROM ACROSS THE RIVER

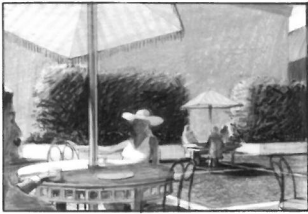


VIEW FROM ABOVE

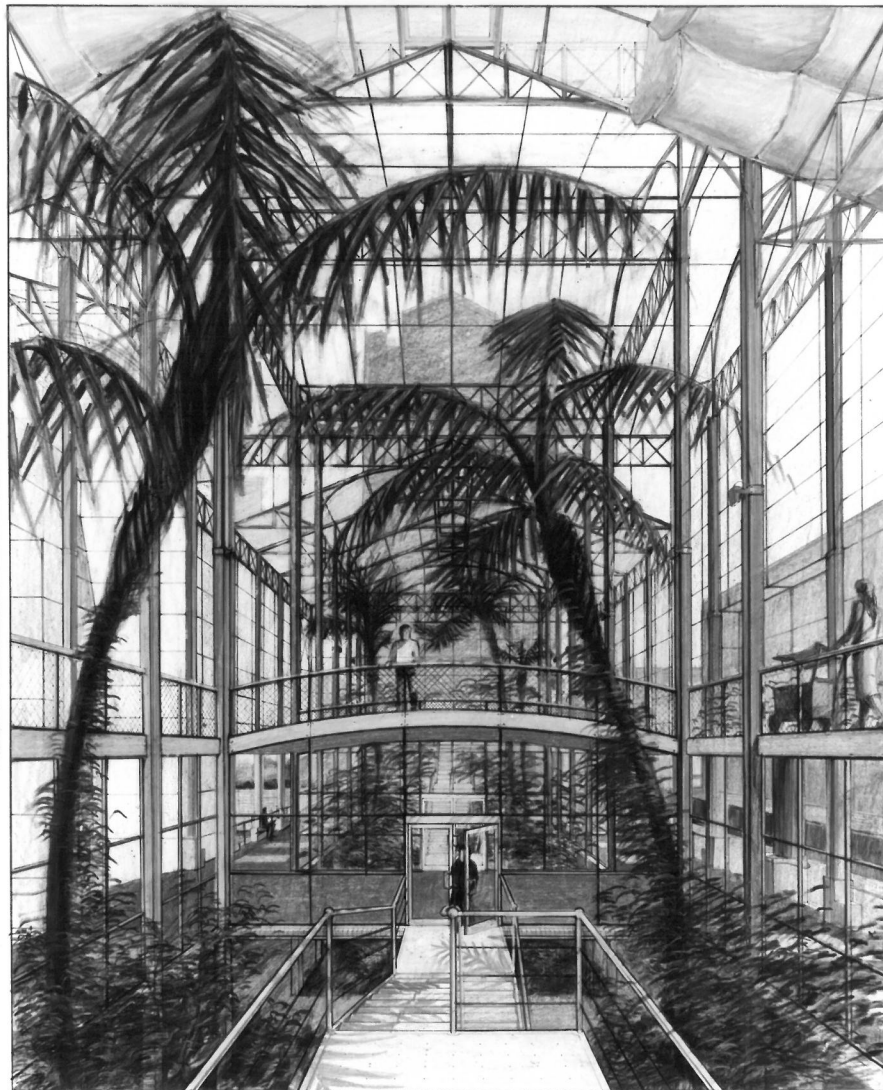
PERSPECTIVE VIEWS

PIONEER SQUARE

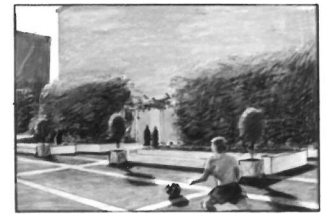
BOARD NINE



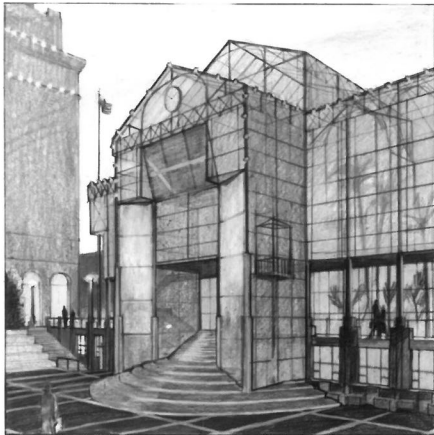
OUTDOOR CAFE



INTERIOR VIEW



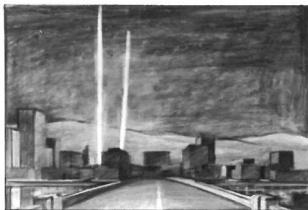
PLAYING ON THE SQUARE



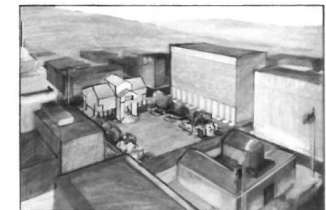
ENTRANCE FROM THE SQUARE



BROADWAY ENTRANCE WITH EXHIBITION BANNER



A VIEW FROM ACROSS THE RIVER

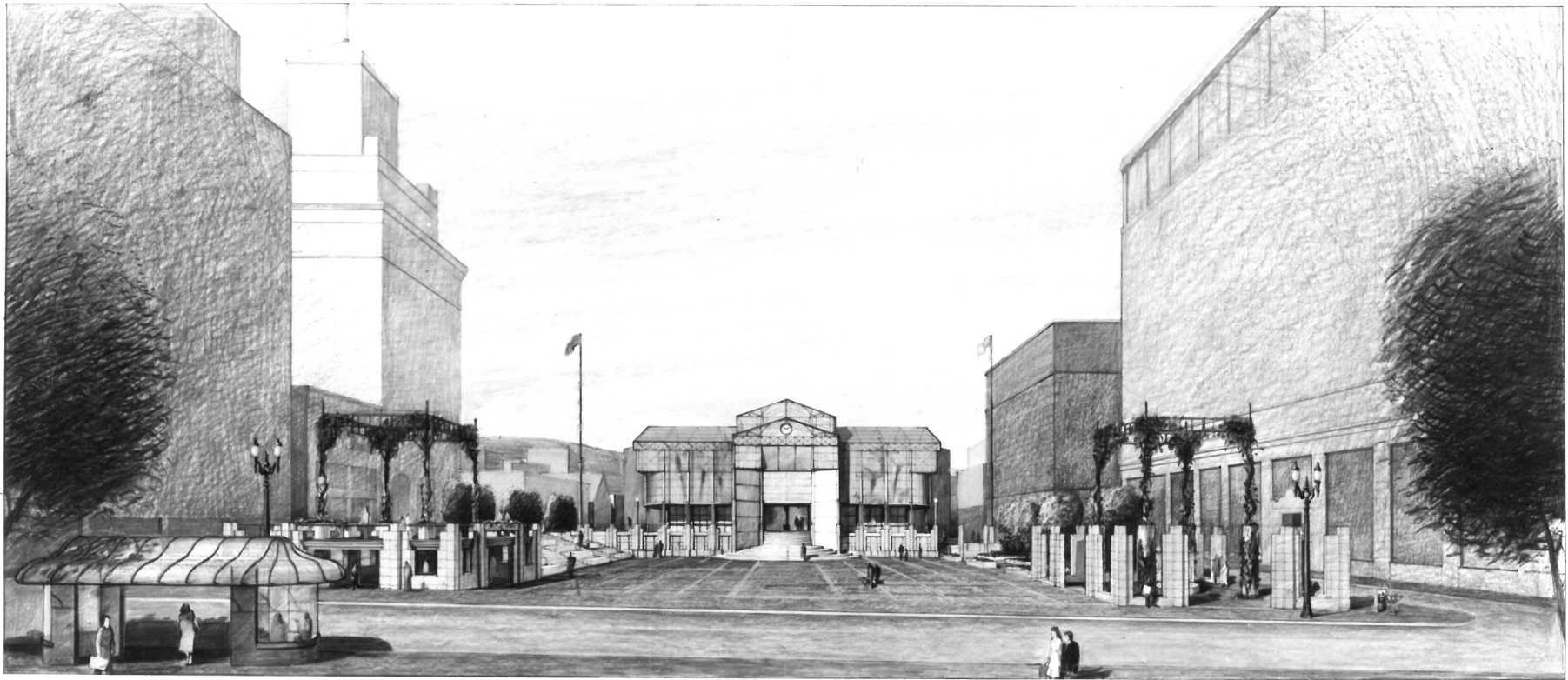


A VIEW FROM ABOVE

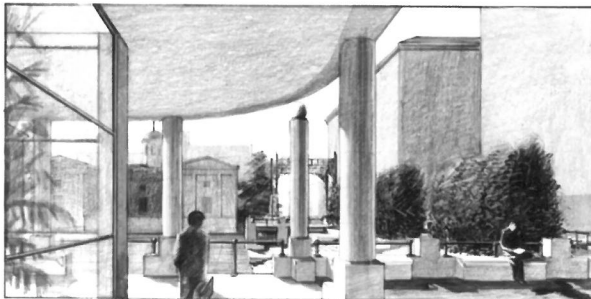
PERSPECTIVE VIEWS

PIONEER SQUARE

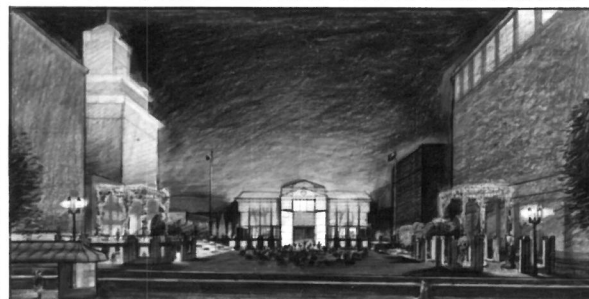
BOARD NINE



PIONEER SQUARE AS SEEN FROM THE POST OFFICE ENTRANCE



A VIEW FROM THE YAMHILL SIDE OF THE BUILDING



PIONEER SQUARE - EVENING SCENE

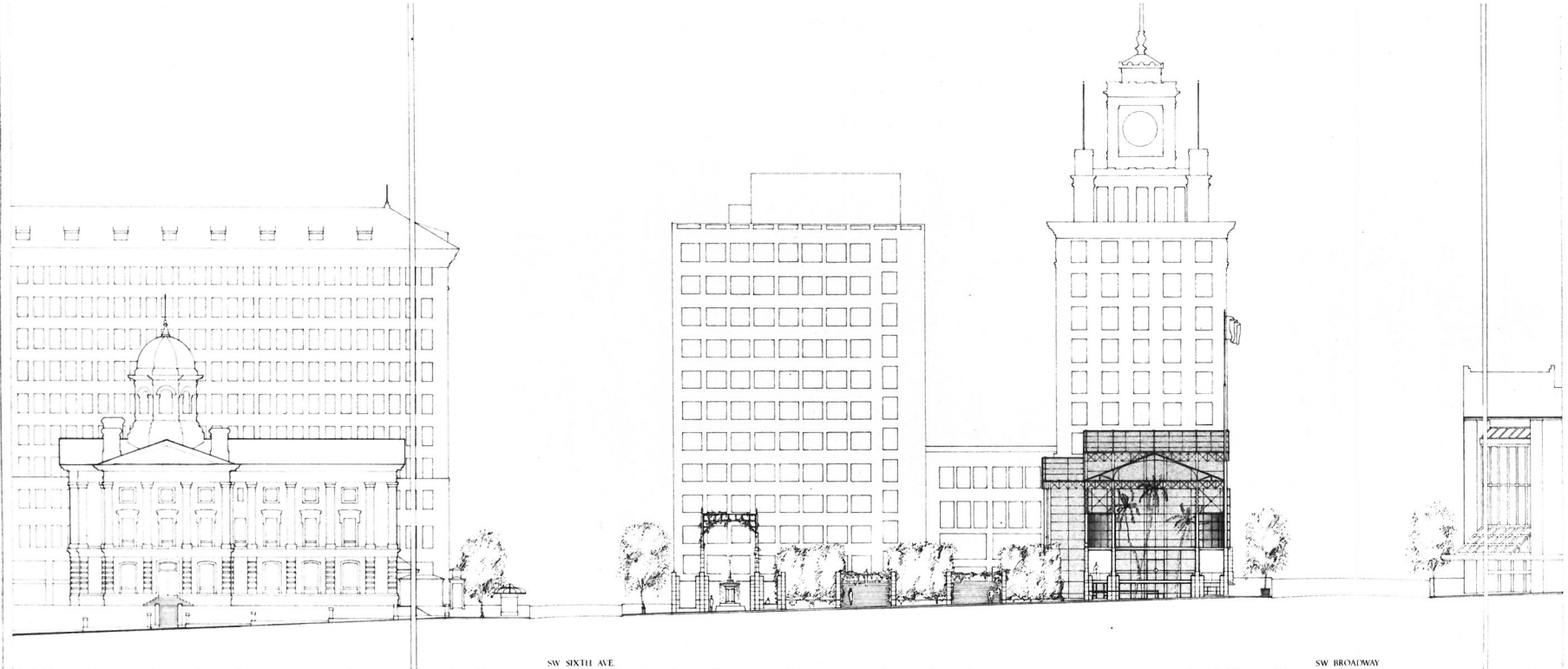


FOUNTAIN GAZEBO AT MORRISON AND SIXTH

PERSPECTIVE VIEWS

PIONEER SQUARE

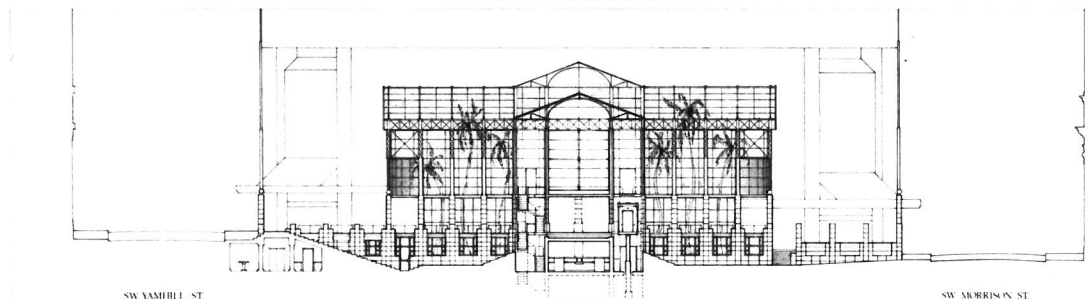
BOARD EIGHT



SW SIXTH AVE.

SW BROADWAY

ELEVATION LOOKING SOUTH



SW YAMHILL ST

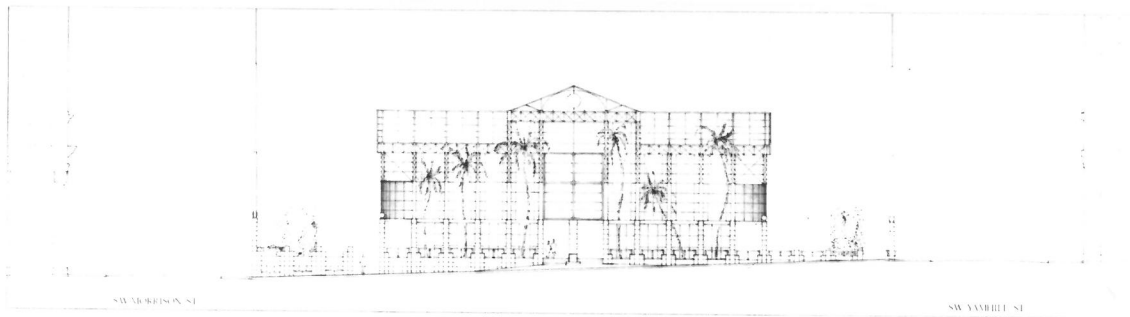
SW MORRISON ST

SECTION CC' LOOKING WEST

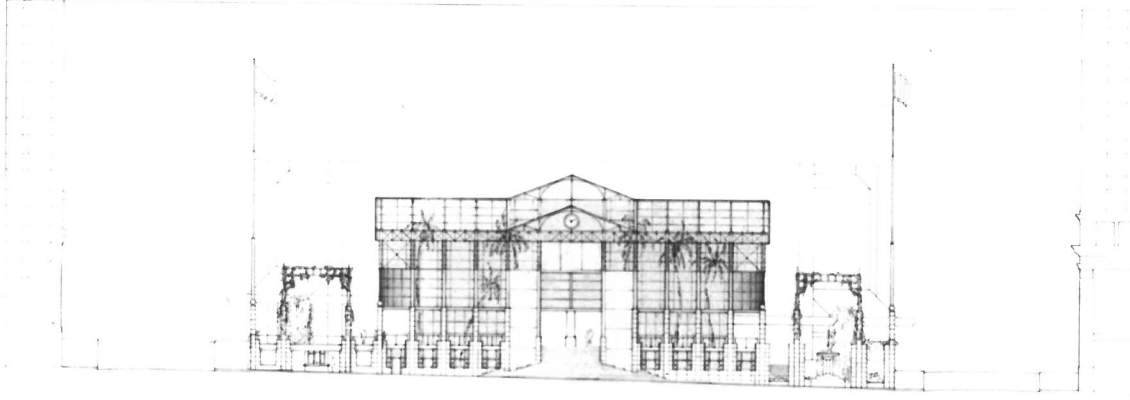
ELEVATION & SECTION

PIONEER SQUARE

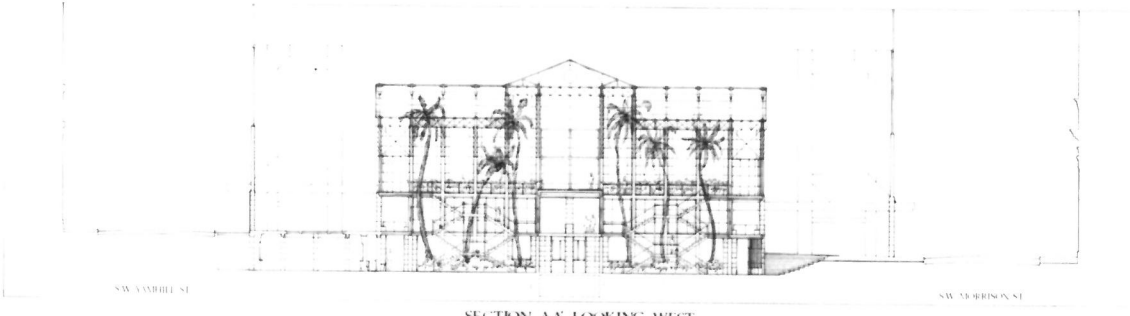
BOARD SEVEN



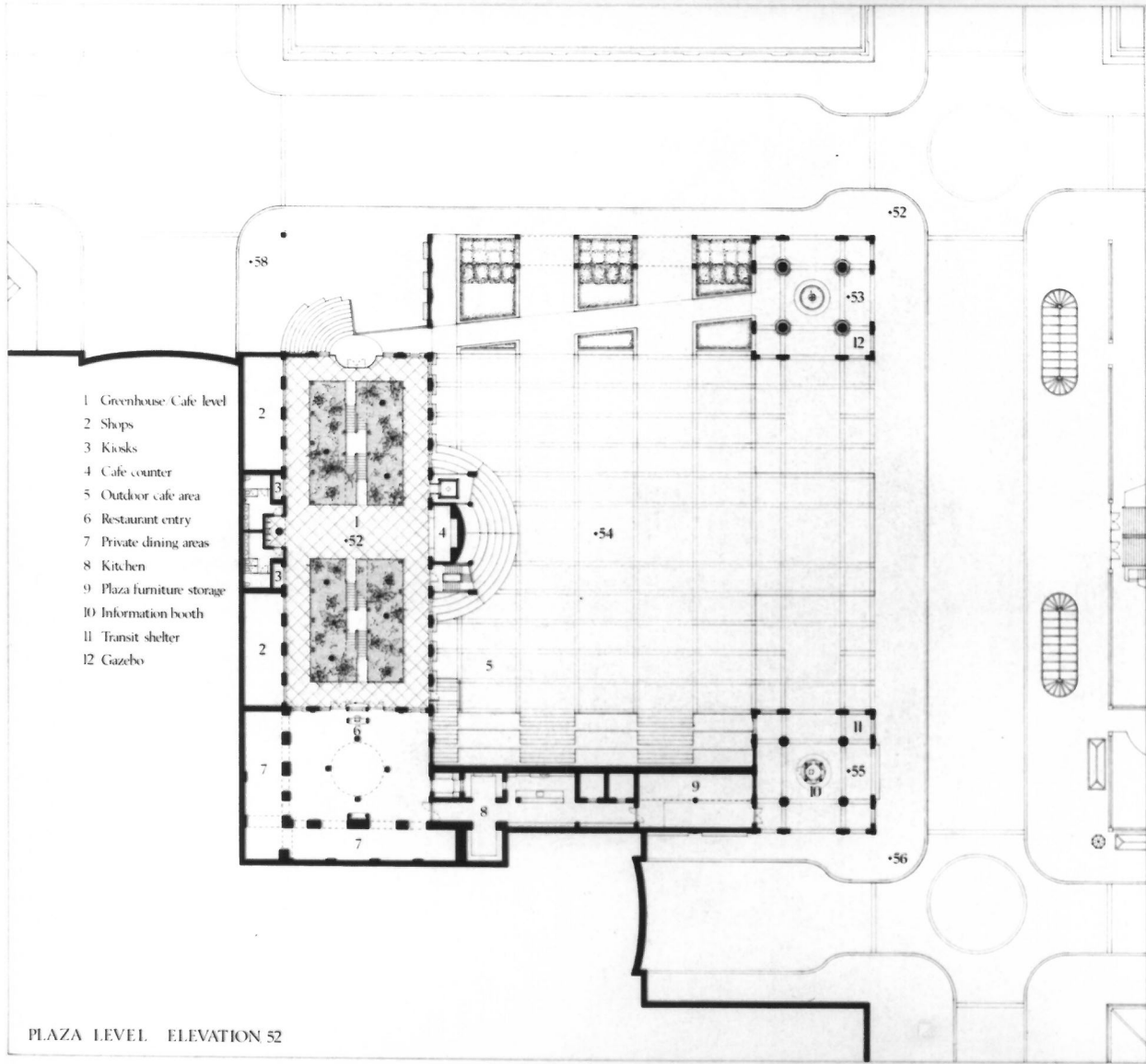
ELEVATION LOOKING EAST



ELEVATION LOOKING WEST

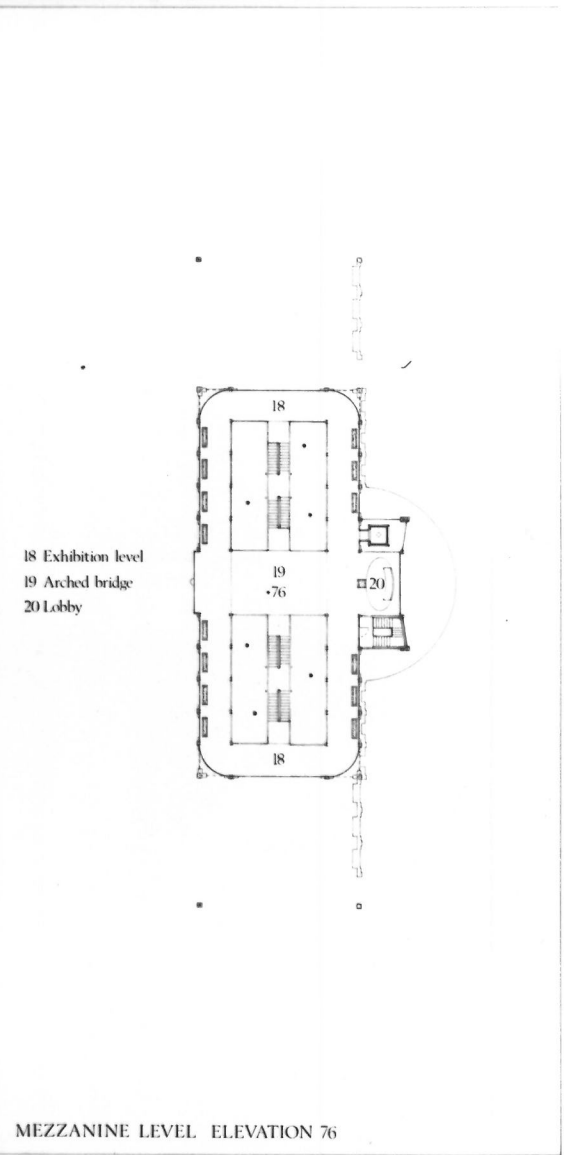


SECTION AA LOOKING WEST



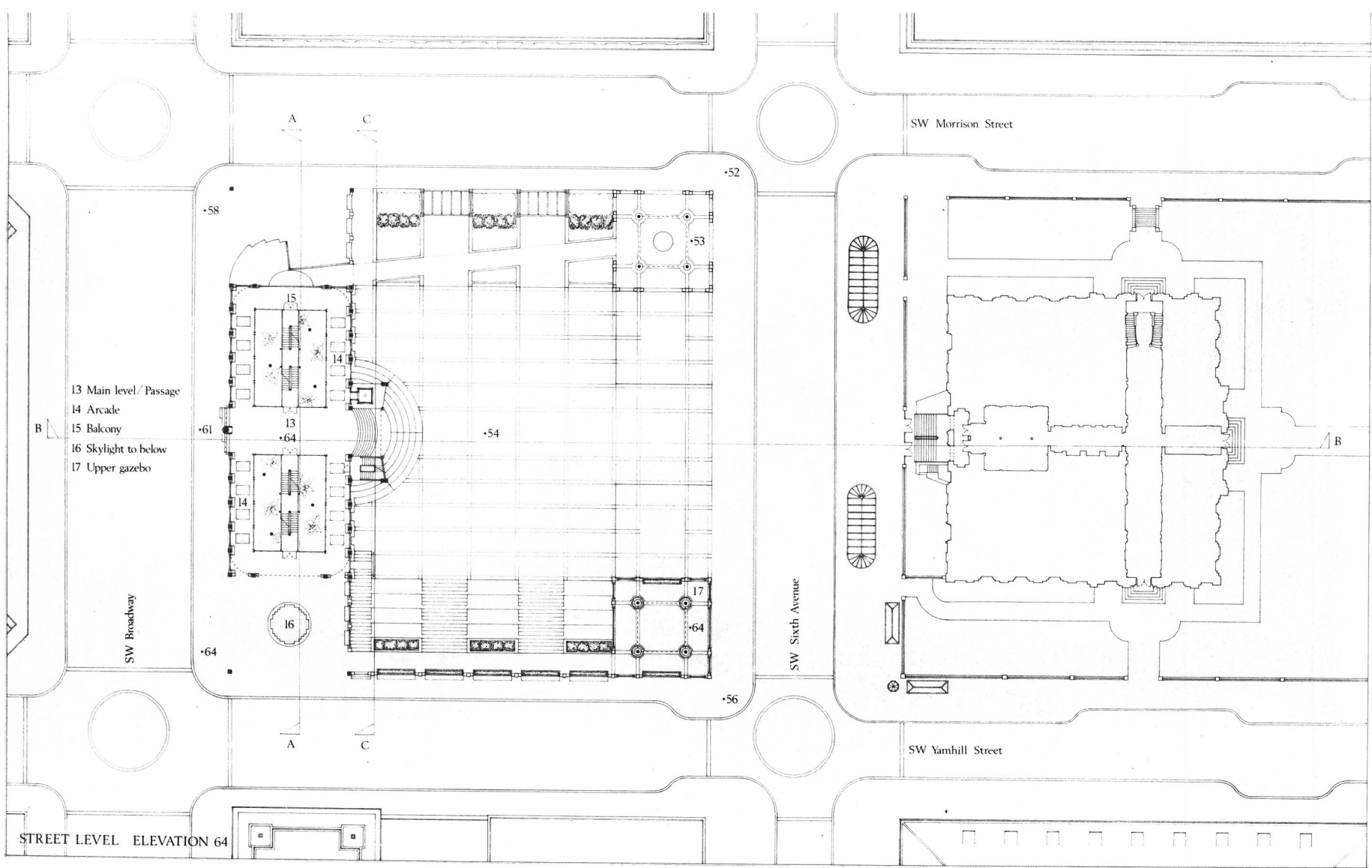
- 1 Greenhouse Cafe level
- 2 Shops
- 3 Kiosks
- 4 Cafe counter
- 5 Outdoor cafe area
- 6 Restaurant entry
- 7 Private dining areas
- 8 Kitchen
- 9 Plaza furniture storage
- 10 Information booth
- 11 Transit shelter
- 12 Gazebo

PLAZA LEVEL ELEVATION 52



- 18 Exhibition level
- 19 Arched bridge
- 20 Lobby

MEZZANINE LEVEL ELEVATION 76



PLAN

PIONEER SQUARE

BOARD THREE

CONTROLLING CONCEPT

AIMS

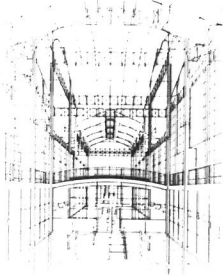
The aims of this design are:

1. To make an exemplary American urban public place, a model of civility for the new urban consciousness that marks the developments of the last decade. As such, this design could be the first materialization of a building type that can be seen as today's equivalent of the "suburban-style hall-market place" of the medieval city. This building type is hybrid in nature because it results from the blending of various different building types; it contains elements of the urban *Green House* of the kind meant to be for the enjoyable display and not just for the cultivation of the plants; of the *Trade* with shops, of the *Palm Court* (with its natural complements, the restaurant and the cafe), and of the *Suburban Hall*; consequently, to identify this building with any one of these labels inevitably impoverishes the image and potential of the building, which is all that, plus something else. It is not, we think, too presumptuous to assume that perhaps in years to come this type will be referred to as the "Portland version of the city square." We feel it is important to explain these intentions as clearly for it is our strong conviction that the attitude from which this project is borne is positive, optimistic and forward looking since it provides something new for the community, and in so doing it contributes a different way of dealing with public places in America yet traditional (because it uses and reinterprets bits and pieces of everyone's memories and images of public places) and is, as such, much in accordance with Portland's history, spirit and cultural identity.
2. To create a public place, complete and rich in associations with evocative power, a place characterized by:
 - Flexibility*: a place which can accommodate many uses today and, as well, accept future physical changes that will naturally occur in a number of years without it losing its essence and distinctiveness; the history of urban design teaches that good places are the result of the respectful aggregation of pieces and minor changes over time, which do not, however, change their essential features.
 - Legibility*: a place whose meanings or content are understood by all, because it speaks a fine version of a common language - a place that clearly conveys the ambience that a variety of public functions requires as backdrop or decor for their proper performance; in other words, a place that works well symbolically as well as functionally.
 - Durability*: a place produced beyond the misadventures of fashion and private idioms, a permanent, somehow timeless place, calm and aesthetically enduring.
3. To respect and enhance the physical and symbolic features of the site.

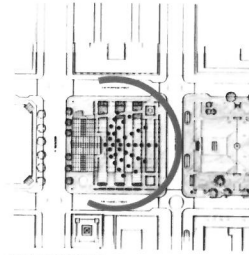
THE SITE

There are some very strong features of the physical context with which we have worked:

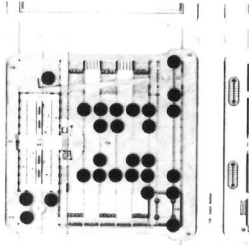
1. The regular, orthogonal, small size square grid of downtown Portland.
 2. The "room-like" configuration of the site, its condition of "void" shaped by the constant high walls around it.
 3. The obelisk-like, classical nature of the Pioneer Courthouse, its frontality and most importantly its axuality, which visually bisects the site.
 4. The topography.
- There are also some facts from the past of the site that have "influenced" our work: images of the old School House and of the Grand Hotel that occupied the site later both important civic structures, both classical, both, in a way, monuments to the community life and cultural continuity of Portland.



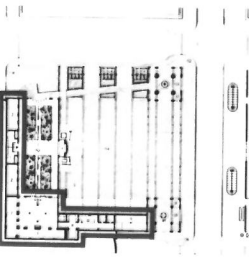
POTENTIAL COMMERCIAL DEVELOPMENT
Small Scale Retail Zones and SW Broadway Arcade Extension



PUBLIC GATHERINGS
Concerts, Theater, Dance

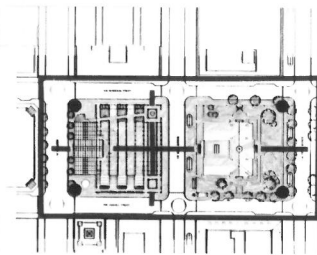


COMMERCIAL USE AND EXHIBITION AREAS
Markets, Arts and Crafts, Fairs

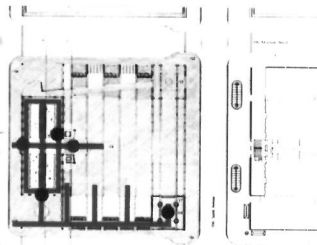


COMMERCIAL USE AND EXHIBITION AREAS
Markets, Arts and Crafts, Fairs

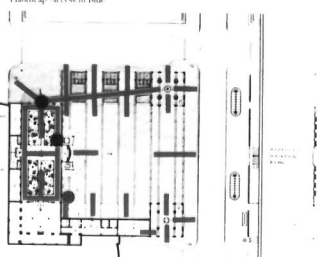
POTENTIAL TRANSIT DEVELOPMENT
Sidewalk Arcade and Light Rail Shelters



THE ENLARGED SQUARE
Ceremonial Scale Parades, Festivals, Processions



PERMABILITY
Handicap Access in Blue



PERMABILITY
Handicap Access in Blue

THE STRATEGY AND ITS RESULTS

In order to respect and enhance the physical and symbolic features mentioned above, our concept develops strictly within the orthogonal grid of the city divided into 40 x 40 squares which are established by the dimensions and the location of the Pioneer Courthouse within its block. In a single move the concept succeeds in strengthening the presence of the courthouse by acknowledging its frontality and responding to the importance of its axis by placing at the opposite end of the square a building which balances its position within the whole of the site; this building, the Palm Court, is featured with a central gateway which is open and in strong architectural rapport with the Courthouse across the way, thus removing the quality of "indifference" which seems to dominate the Broadway front of the Nordstrom Department Store. By placing the Palm Court at the rear of the Courthouse, three goals are achieved: first, a much square footage as possible is allocated to the square; proper second, the building alignment along Broadway is completed, which greatly enhances the urbanity of this major street; automobile traffic will view the square from the corners, through the glass structure of the Palm Court and through the central passage to the square; and third, such a location for the Palm Court allows for an experimentally enlarged square with the Pioneer Courthouse clearly a part of it.

To reinforce the appropriation of this space, four high flagpoles, together with scarps, lights of special events, are placed at the corners of this "enlarged" square, which is then to be bounded by a pair of major objects, the Courthouse and the Greenhouse, both sharing common grounds, one institutional, the other festive, one opaque the other transparent, one in granite, the other in glass. As a result of these choices, Pioneer Square will then be perceived effectively as being adjacent to the Fifth Avenue mall, an effect which will add *layers of organization and experience of scale*. Besides benefiting the commercial facilities of the area - to the entire downtown area. In this way, the success of the already built mall will be further guaranteed and Portland, a city already graced with numerous parks, public gardens and fountains will have its unique city square.

The principle elements of our design, in essence, are three: the Square, the Greenhouse and a variety of minor pieces. The square itself is a floor, the public arena, the urban carpet, a stage in itself and also the seating from which to view another possible stage formed by the grand landing of the passage from Broadway to the square; this floor could be a dance floor, for high school performances or for by far more intimate moments on warm nights; the floor is a playing field; it receives the overflow of the cafe - its tables, umbrellas and garden chairs - it is the necessary neutral field for the assemblage of open air exhibits, arts and crafts fairs and flea markets, live music or Saturday night concerts, sunbathing or an afternoon stroll. Because it will be unique as a space and the spot for special events in the midst of the life of the Downtown area it will indeed be constantly busy and will serve as a point of attraction for the people of Portland. (To facilitate a variety of functions, convenient storage for the square's occasional furnishings have been provided.)

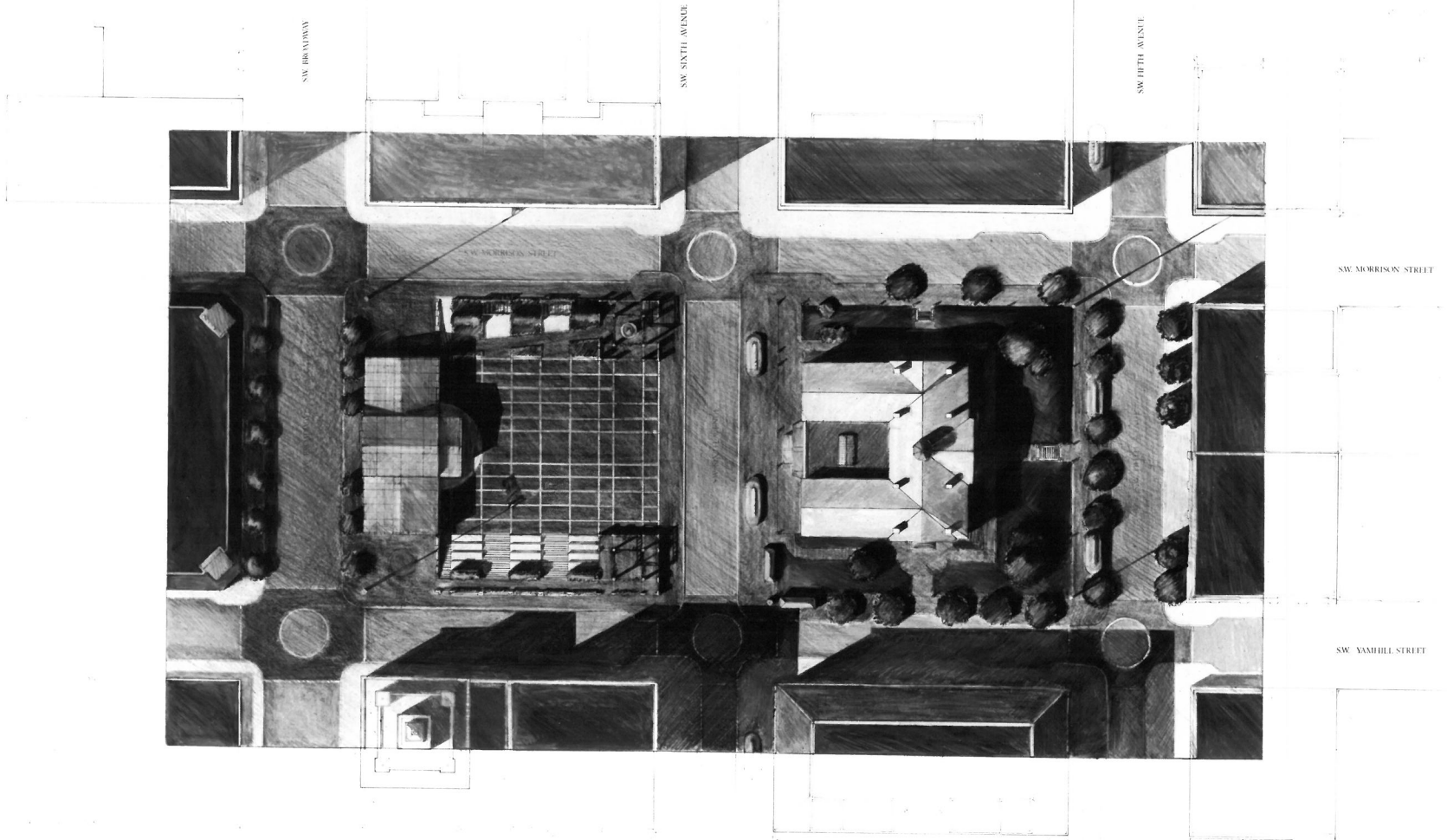
The building as an open "palace" with multiple doors - at the lower and upper levels, in the center and at the ends - everyone can pass through walking as if in mid-air among the foliage of the trees within, like in a tree house, or to buy passage through controlled entrances for the viewing of special exhibitions at the upper level while also at the same time with a view of the square below and beyond. It is a generous building; its peripheral arcades offer refuge from the rain or the sun and balconies and benches overlooking the square; it offers to the passerby its forever green interior, like a delicate cellophane box of flowers, like a gift from the city to its citizens; from the square, at night, with its protective awnings up high drawn closed, it will glow like a carnival tent; from the square at night, ready for a concert, its edges lined with bright yellow theater lights it will be like an abstract glass eagle perched high on the square. - At again another level, the building will contain a restaurant and a tea room, both with equally special views of the square; and shops that will perpetuate and nourish the market-place characteristics of the area. A special building, indeed, that encourages access to it and through it to the square; a building continuously involved with community affairs, the city's lobby, a reliable and friendly meeting place and surely a major pole of attraction for the city.

The smaller pieces, sometimes holding a complimentary position with respect to the floor and the building, sometimes holding a life all of their own are: the fountain gazebo, with its benches and pergola laced with roses and wisteria, the covered shelter at the opposite corner, with the general information booth and access to storage areas for both the square and the restaurant; the promenade overlooking Yamhill St. and the square below, with its rows of planters, benches and express trees, leading to the gazebo on top of the refuge; a privileged belvedere overlooking the square; the rose gardens along Morrison leading toward the square; the elliptical steps descending into the building at the corner of Broadway and Morrison; a casual theater for casual - or perhaps not so - performances, and a few more to be found by one's imagination.

These three basic elements of our design and particularly their interrelations allow for something we have already mentioned in the first paragraph and that we consider of the greatest importance: *the variety of scales and the flexibility of uses today and for future changes*. The following set of graphics will illustrate these points, we hope, clearly.

Essentially, then, the square is of a double nature - private and public, quotidian and ceremonial which are generated by the overlapping of a civic axis - linear, symmetrical, reassuringly monumental (because every proud community requires and deserves monuments) and private paths, non linear and asymmetrical, delicate and almost domestic in scale, individual yet belonging to everyone, a collection of a variety of focal points.

All of this together should in all certainty provide a memorable place, for Portland visitors to photograph, where tourists gather, browse and disperse to other points of the city; a place for other cities to emulate; a well tailored, proper place for Portlanders to enjoy.



SITE PLAN

PIONEER SQUARE

BOARD ONE