

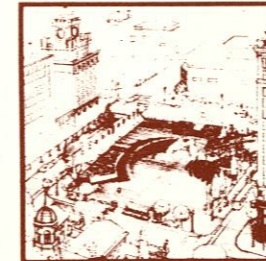
PIONEER  
COURTHOUSE  
SQUARE  
GIFT CATALOG

George Washington  
left his name everywhere  
and thus tells us  
that it is  
truly American  
to leave yours.

## FRIENDS OF PIONEER SQUARE

May 15, 1981

*Philip R. Bogue  
President  
Pauline Anderson  
Vice-President  
Stanley A. Goodell  
Secretary-Treasurer  
Michael C. Powers  
Coordinator*



*Post Office Box 309  
Portland, Oregon 97207  
Telephone (503) 223-1613*

Dear Friend;

We are pleased to introduce the Pioneer Courthouse Square Gift Catalog. Five years of intensive public involvement has culminated in a public-private partnership to finance the construction of our nationally acclaimed public square.

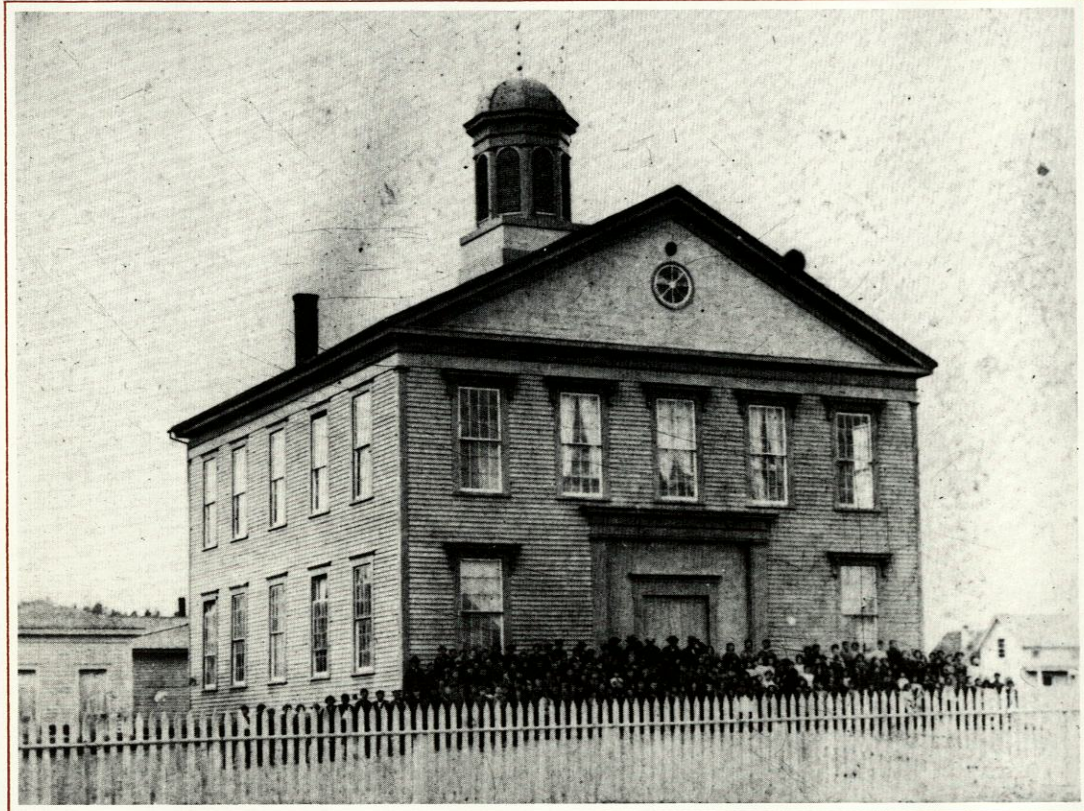
Located on the most significant block in the city, Pioneer Courthouse Square is designed for people. The campaign to raise \$1.6 million to complete the project is also designed for people. Whether it is \$15 for a personalized brick or \$500,000 for the elegant Pavillion, individuals and organizations can choose to contribute to their particular delight.

We encourage you to look closely at the Gift Catalog items and choose the way in which you would like most to contribute. Thank you for your support and your gift to all of us and our posterity.

Best Regards,

*Charles Jordan Mike Lindberg*

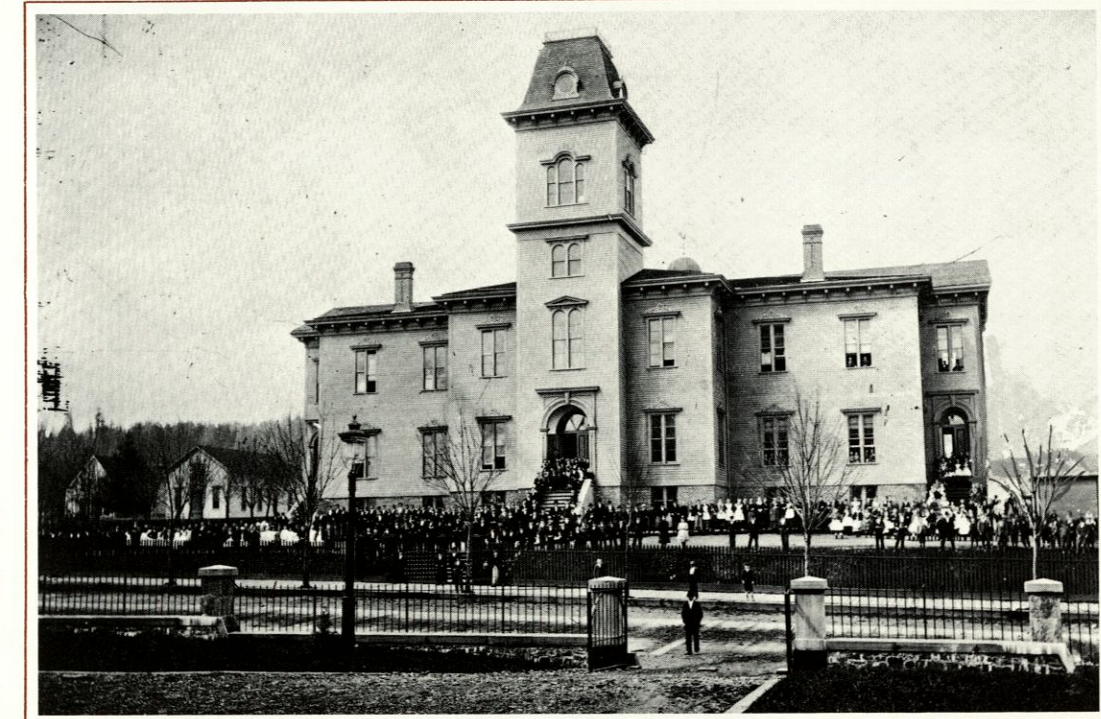
Charles Jordan and Mike Lindberg,  
Honorary Chairpersons



Oregon Historical Society photograph

The Corbetts kept a cow in a pasture across the street.  
Central School opened with 280 pupils  
and three teachers on May 17, 1858,  
a year before Oregon became a star in the flag.  
Man in doorway signaling photographer  
to snap shot may well be  
Principal L. L. Terwilliger.

Pioneer Square when James Buchanan was President



Oregon Historical Society photograph

This is the *second* Central School. It includes the first building,  
which was put on logs and rolled west (towards Broadway) to form  
a wing of the expanded school.  
Photographer set up his camera on Sixth Street.  
Ulysses S. Grant was President.

Pioneer Square 1873



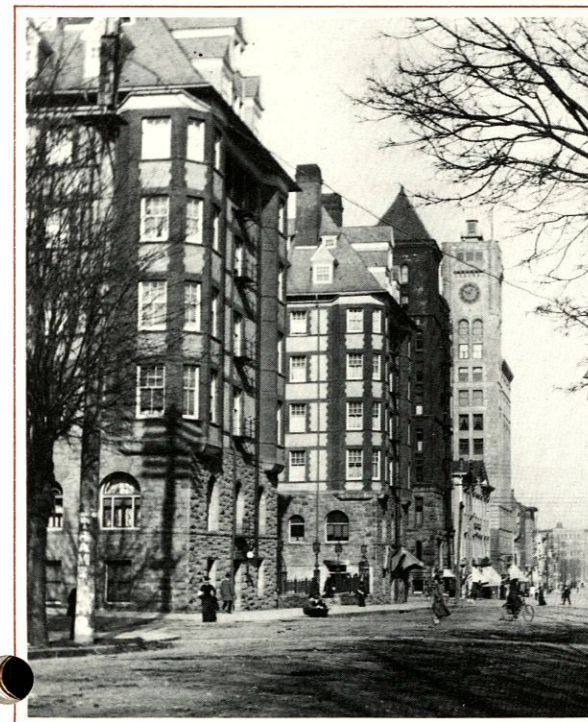
Oregon Historical Society photograph

The majesty that Will Martin and his team put in the brickyard design comes from the historic Portland Hotel. Every president from Benjamin Harrison to Franklin Roosevelt stayed the night, save one. It was the center of town in many ways for many people. The structure was dismantled in 1951 to become a parking lot for 30 years.

Pioneer Square from 1893 to 1951



Aaron Frank is third from the left. Photograph taken in 1930. In 1951 practically everything in the hotel was auctioned off so that the Meier & Frank parking lot could be created. The metal gates visible at the right will reappear when Pioneer Square is complete.



Oregon Historical Society photographs

Pioneer Square lately

This is the advertisement  
 that will bring people  
 to Pioneer Square  
 from all over  
 forever  
 to visit their bricks

# PIONEER COURTHOUSE SQUARE

The Friends of Pioneer Square  
 thank  
 George Washington  
 who left his name  
 on schools, parks, counties, mountains,  
 paper money, beds, and whatnot  
 and thus tells us that  
 it is  
 truly American  
 to immortalize  
 a brick in Pioneer Square  
 with our own personal one-of-a-kind name  
 for all to see  
 forever and  
 ever.

Sounds simple to emulate the father of our country; is it really possible to be remembered for longer than fifteen minutes? Can one still "sneak in" the way Amerigo Vespucci imprinted his own name on two continents? Is the day gone when one's graffiti can identify a cave, a sandwich, an automobile, a religion, a nation, or a lipstick?

Not an easy problem to solve, there are those among us who poolpooh graffiti and seem to welcome oblivion. Not the Friends of Pioneer Square.

We say that each of us should go noticed. Bake your name on a brick.

Better yet, have it done; the fee is only \$15.00 (\$19.82 minus a rebate of \$4.82). Okay, then, here's the plan:

First, determine the spelling of your brick. Example follows. "Billy Ray the Magnificent Skywalker Bates" would not squeeze on one brick. We suggest six, although three would do; however, there's no way to tell where on the square the bricks would appear. Oh well, immortality is still a venture.

Try to use no more than twenty-four characters; maybe shorten it to "B. R. Bates." Otherwise the poor typesetter will be confronted with the problem that sports page editors solve by compressing box score names like "Albert Schoendienst" to "Schst."

Occasionally one learns about name-condensing from personal license plates; study the car just ahead.

Second, fill out the coupon.

Third, sign your name to a check to "Friends of Pioneer Square" for \$15.00. This entitles you to a brick fired with your name to be



placed by a union bricklayer name-up in Pioneer Square, a wallet-sized brick identification card, a certificate for which you may want to contract a suitable framer, immortality, and a button.

Fourth, ask someone to flag down a post office jeep to learn the current cost of a stamp.

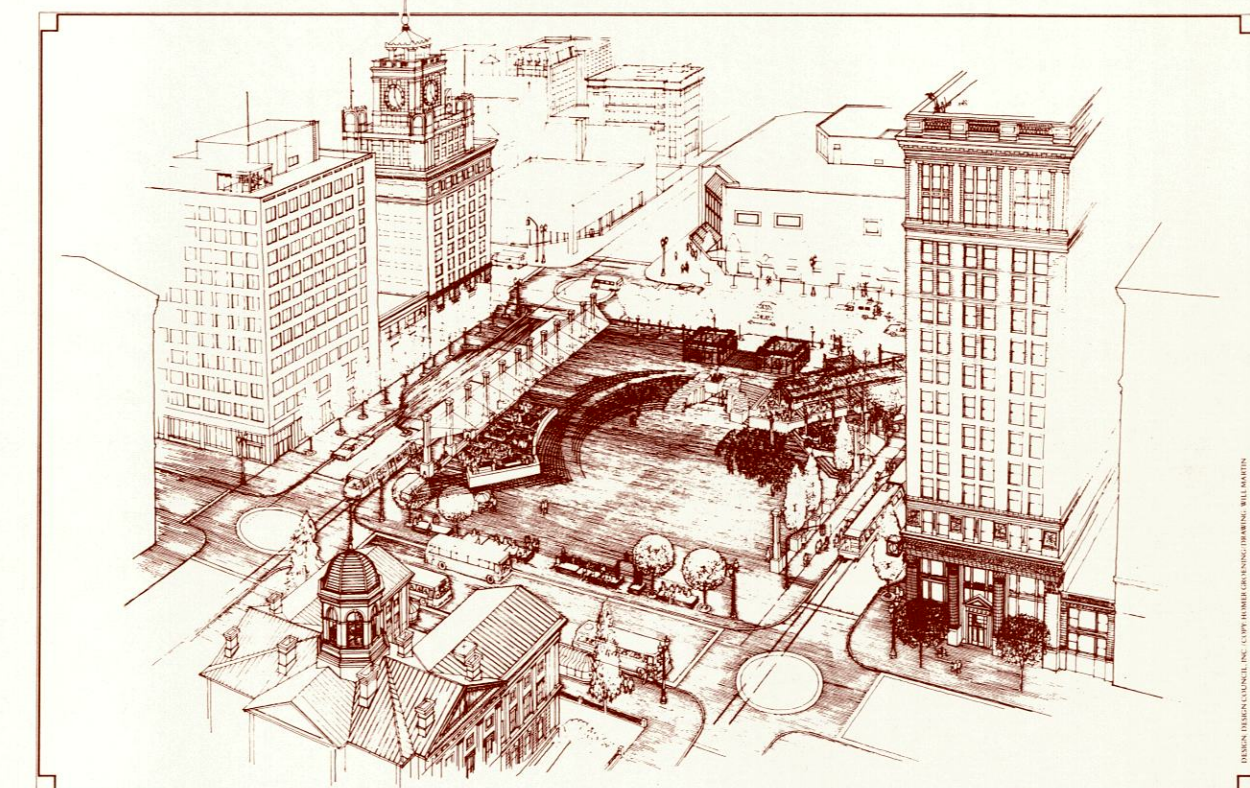
Fifth, while waiting for the rest of the money to be gathered (it will take more than a few dozen bricks, of course), think on oblivion. When archeologists centuries hence find Pioneer Square under rubble, one of them may say, "Now well, look at all those names on all those bricks. This must be a burial ground for thousands of small people." Ponder the desert proverb: "The small camel that walks on ripe pomegranates has sweet knees." Wear your button proudly. Flash your ID card.

The Friends of Pioneer Square promote understanding, one world, a sound monetary system, and a place in the center of Portland to share a square with friends. It will be one of the world's great squares, made entirely by locals; after all, a jury found for the Will Martin team of square-designers, the local group who devised the best design (rather obvious decision; see sketch).

You may want to make your brick arrangements in person.

First, find Pioneer Square. Look to the southeast; see the kiosk at Sixth and Yamhill?

Wait until noon, April 6, when bricks go on sale. Or any day that is not the Sabbath, from 8 in the morning until 6 in the late afternoon.



FRIEND OF PIONEER SQUARE  
 BRICK NAME INSTRUCTIONS

Linda Clingan  
 Pioneer Square Archivist  
 Friends of Pioneer Square  
 P.O. Box 404-08  
 Portland, OR 97208 tel 223-1613

Brick Number

Do not write in this space unless you are Linda

Dear Linda,  
 Here is a check (or money order) for \$15.00 for one brick. Please have the brick baker bake one with the following name:  
 Print in BLOCK letters ONLY as you wish it to appear on brick.  
 \_\_\_\_\_

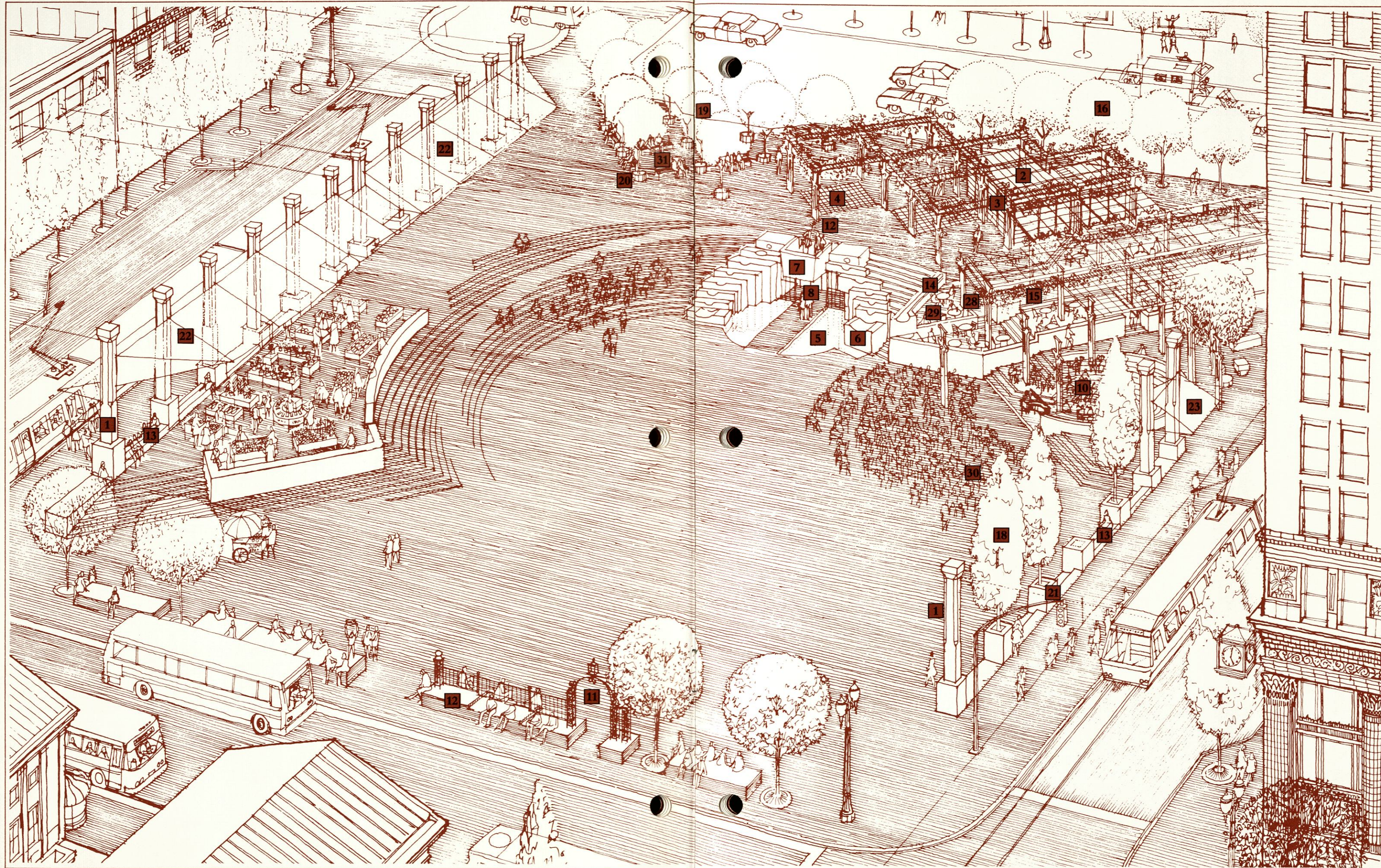
Purchaser's name, last name first \_\_\_\_\_

Street address, town, state, zip \_\_\_\_\_ Tel \_\_\_\_\_

I understand that I can pay my money and get my ID card and button at the Sixth and Yamhill kiosk. I hereby understand that all brick certificates will be mailed. I address myself to Linda Clingan, Pioneer Square Archivist, Friends of Pioneer Square, P.O. Box 404-08, Portland, OR 97208. I understand that if I do not pay my brick to Linda Clingan, she will then give me my button and ID card.

# The bricks and pieces that will make up Pioneer Square

- 1 Sixteen Stoa Columns
- 2 Glass Pavilion
- 3 Flowering Vines and Roses
- 4 Skylights
- 5 Waterfall Fountain (total piece)
- 6 Granite Blocks
- 7 Keystone Lectern
- 8 Bronze Entry Gates
- 9 Benson-Style Drinking Fountains \*
- 10 Brick Amphitheater
- 11 Portland Hotel Gate and Fencing
- 12 Sixth Avenue Seating Benches
- 13 Morrison and Yamhill Seating Benches



- 14 Pavilion Water Feature
- 15 Mosaic Floor Covering
- 16 Wine Sycamore Maples
- 17 Tree Grates \*
- 18 Armstrong Red Maples
- 19 Flowering Plum Trees
- 20 Planter Boxes
- 21 Column Bases
- 22 Glass Awning System
- 23 Small Glass Awning
- 24 Fallen Stoa Column \*
- 25 Bronze Garbage Receptacles \*
- 26 Bronze Flag Poles \*
- 27 Bicycle Racks \*
- 28 Pavilion Tables
- 29 Pavilion Chairs
- 30 Plaza Chairs
- 31 Classical Park Benches

\*Not shown  
Descriptions and sketches  
on the following pages.

These are the gifts that will create an elegant and timeless place in the heart of the city

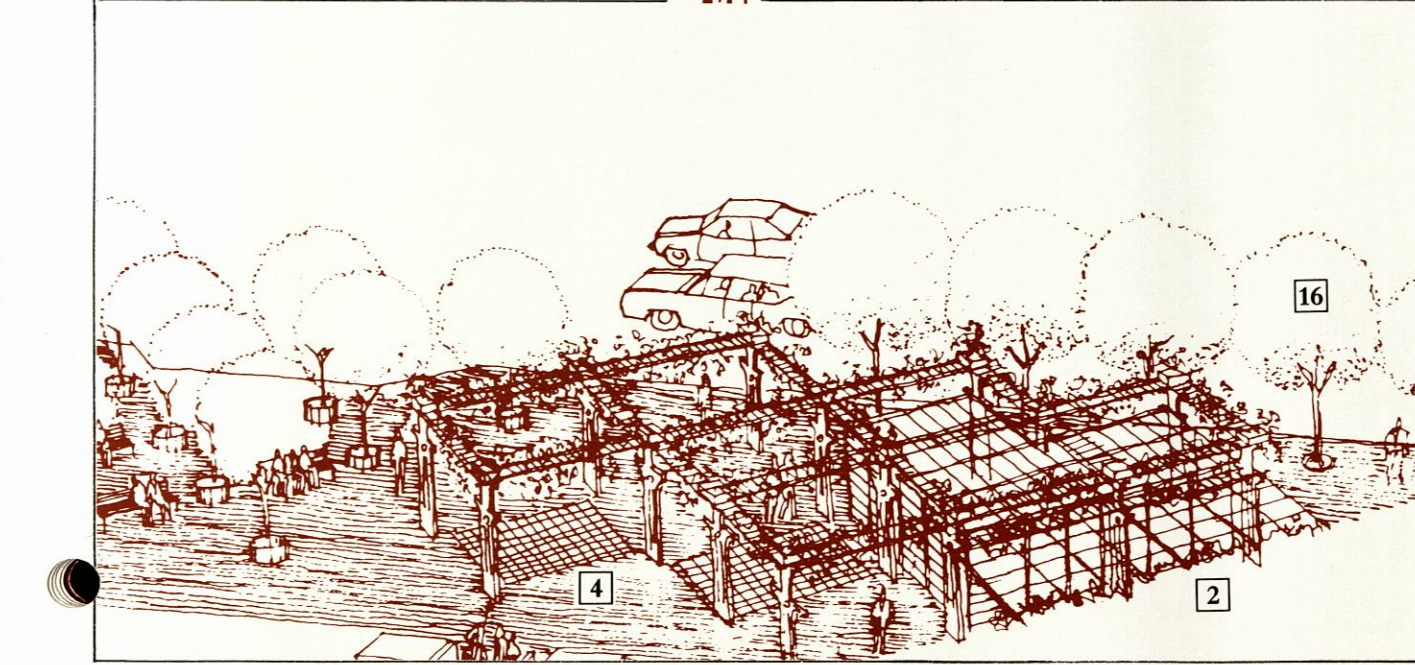
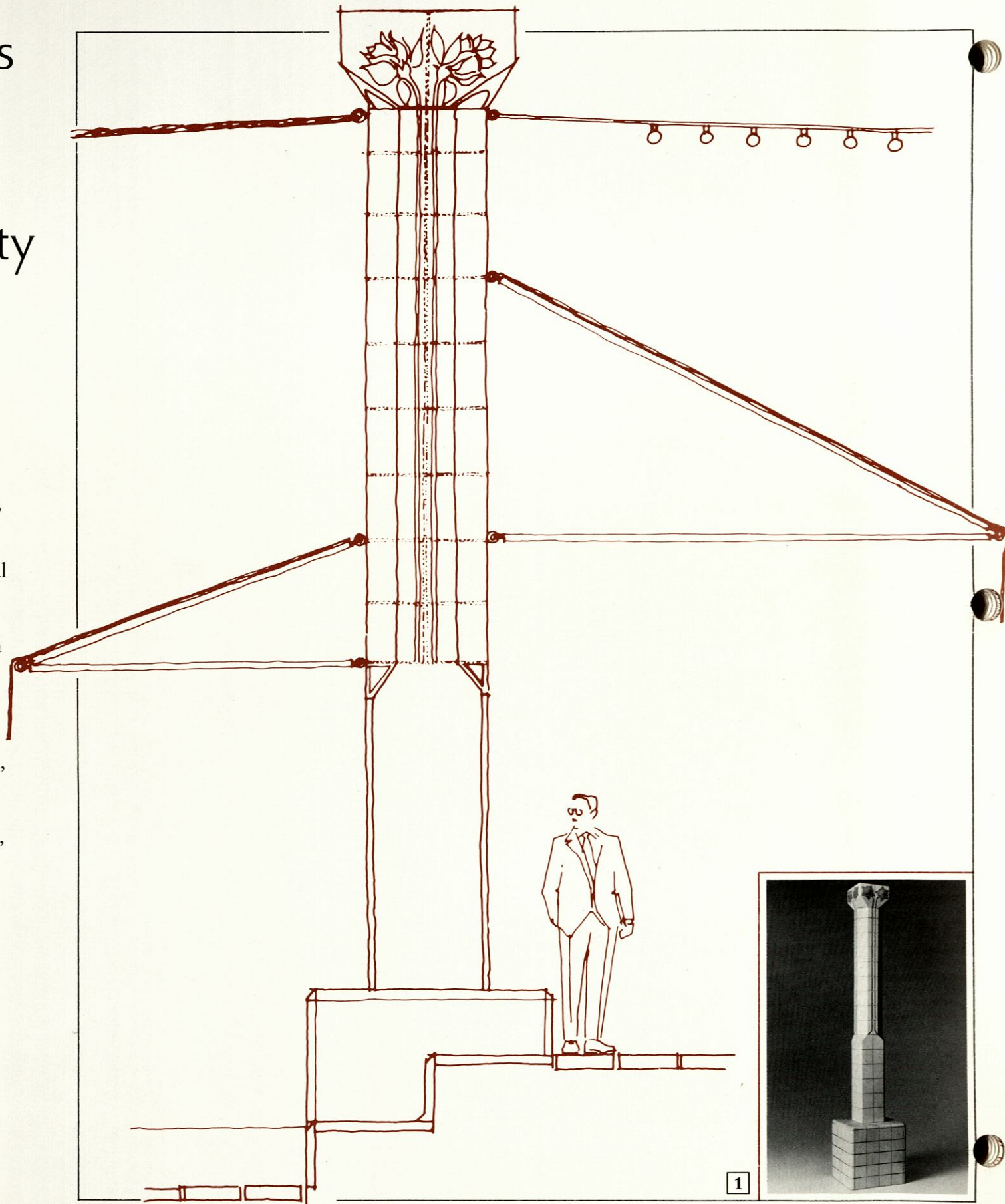
**STOA COLUMNS**

The sixteen columns along Morrison and Yamhill streets are intended as an elegant method of combining history, function, and style.

Constructed of terra cotta, the material used in the surrounding Meier and Frank, Jackson Tower, and American Bank buildings, the columns carry on their classic and timeless tradition.

“Stoa” comes from the Greeks who had colonnades around the edges of their squares — shelters for marketing, discussion, a place out of the sun and rain. With their glass covering, the columns provide this same usefulness, supporting the future light rail cables and sheltering people as they wait to board the light rail which will run along Morrison and Yamhill Streets

**1 Sixteen Stoa Columns/ \$30,000 each**



**GLASS PAVILION**

A central feature of Pioneer Courthouse Square will be an elegant glass pavilion located on the southwest portion of the square's upper level. Designed in the best tradition of Portland architecture, the pavilion is an open air and enclosed pergola structure. A fine eating establishment, reminiscent of the Grand Tea Room of the Portland Hotel, will be housed here. The pavilion has close to 3,000 square feet and can accommodate in excess of 200 patrons. Under an elaborate trellis system supported by bronze columns, visitors to the square can eat, drink, and socialize among native flowering vines and Portland roses.

Two 16' x 16' skylights, similar in nature to those found in old Portland sidewalks, will be set into the floor beneath the pavilion. Constructed from 8" square glass blocks, they will bask the lower level of the square with natural light.

**2 Glass Pavilion/\$500,000**

**3 Flowering Vines and Roses/ \$15,000**

**4 Skylights (2)/\$15,000 each**

## WATERFALL FOUNTAIN

In keeping with a city celebrated for its fountains, Pioneer Courthouse Square has as a central feature a waterfall fountain. The waterfall cascades down a series of large granite blocks into a reflecting pool below. The waterfall fountain serves as the major entry into the lower level. Its pool is crossed by a walkway which leads to the bronze entry gates, 12' wide and 10' high.

Again, the form reaches back to western tradition with its classic Roman arch. The final piece, a keystone, is designed to be used as a lecturn. A site for official city ceremonies, speeches, and forums. In addition, the lecturn is a great vantage point from which to view the square's many activities.

**5 Waterfall Fountain (total)**  
\$215,000

**Waterfall Fountain (separately)**

**6 Granite Blocks (22)/\$7,500 each**

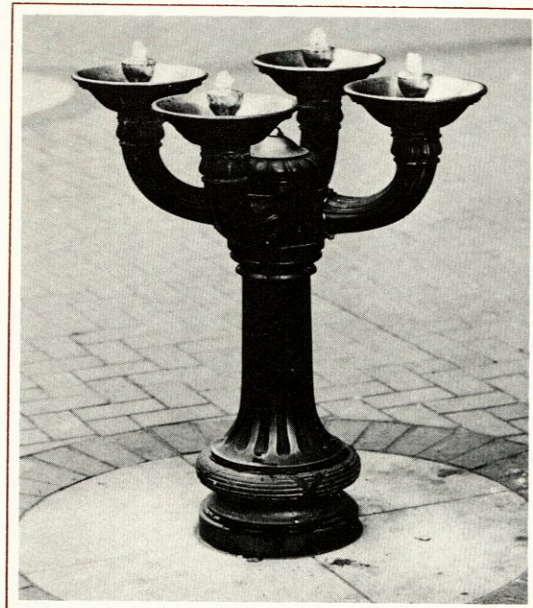
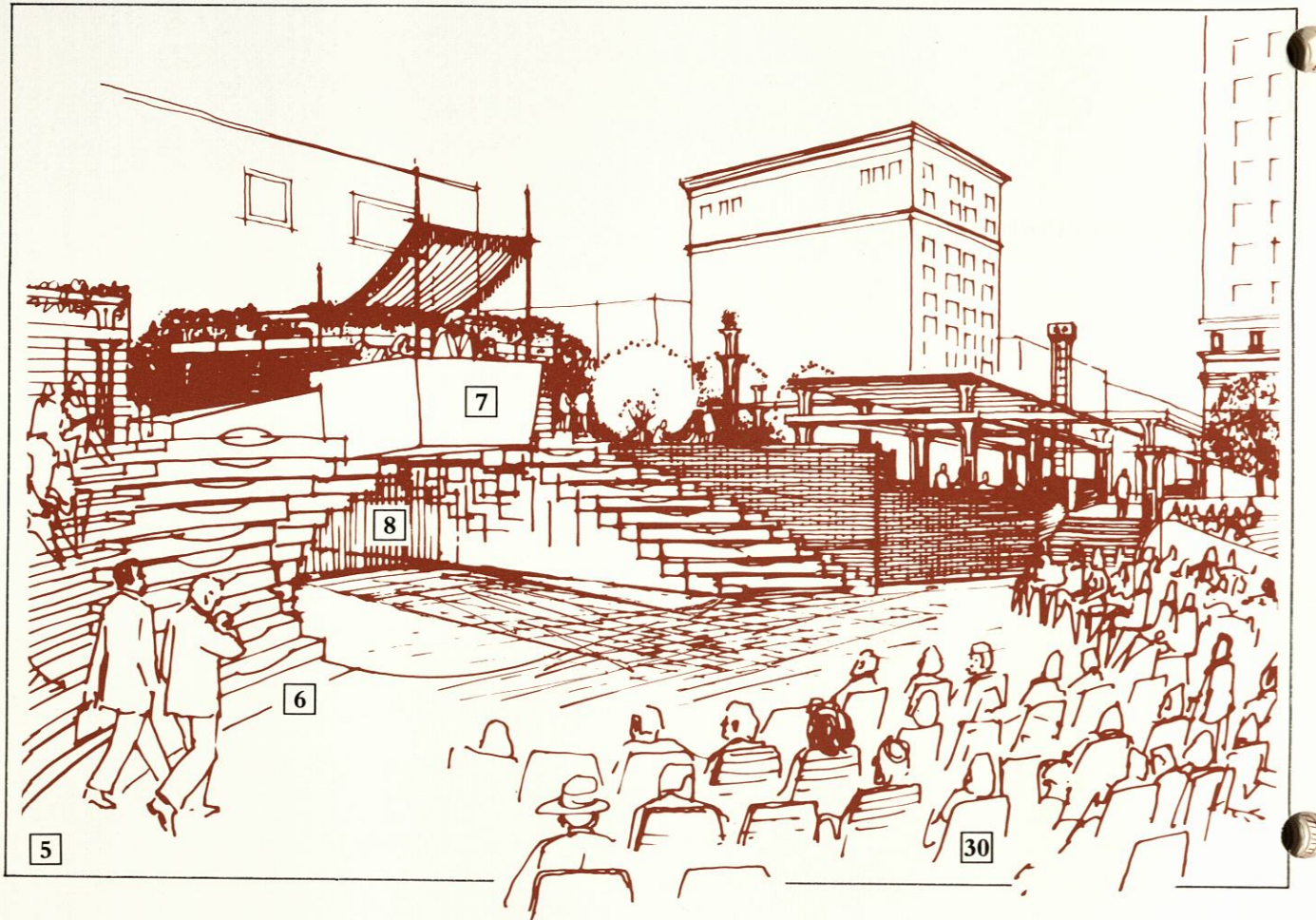
**7 Keystone Lecturn/\$50,000**

**8 Bronze Entry Gates/\$12,000**

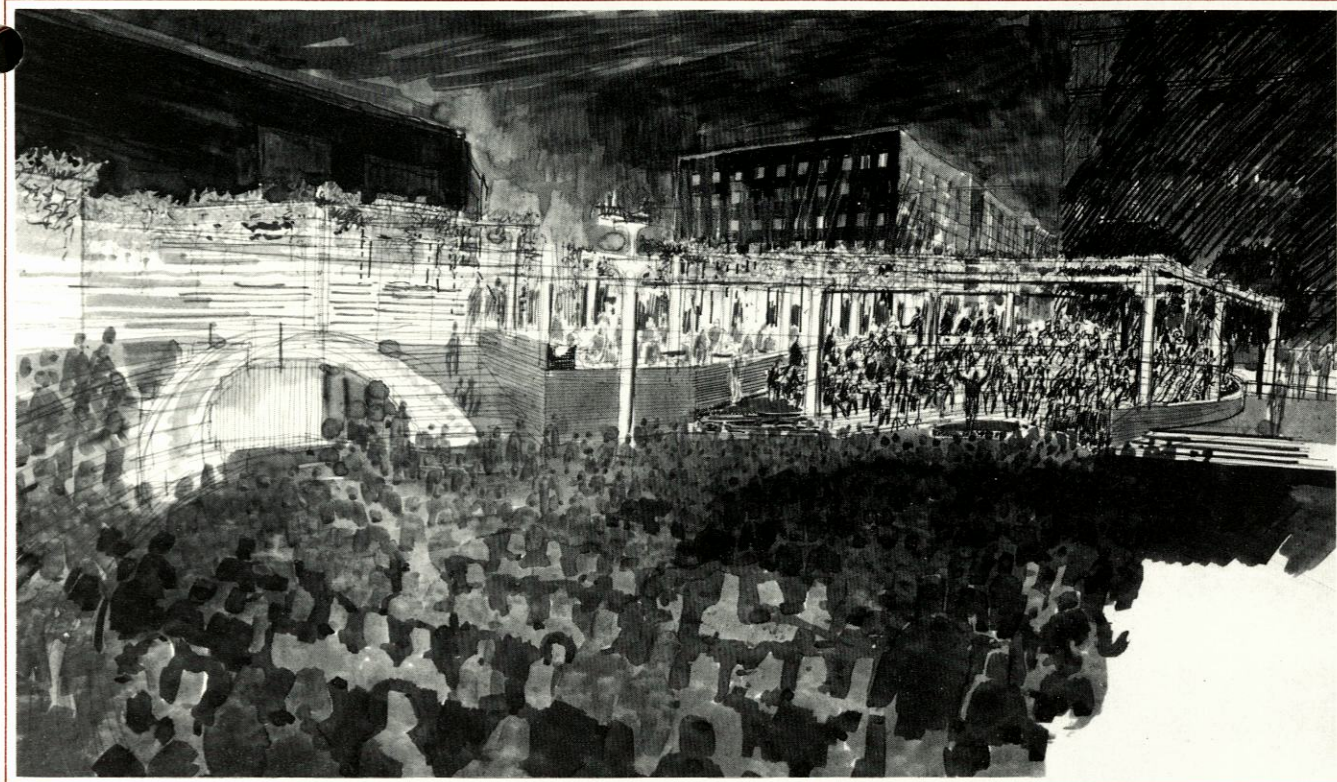
## DRINKING FOUNTAINS

Another Portland tradition will be extended with the addition of four Benson-style drinking fountains. With their unmistakable bronze patina seen throughout the city, the fountains will be located in the corners of the square for everyone's pleasure and convenience.

**9 Benson-Style Drinking Fountains (4) / \$5,000 each**



9



10



11

Oregon Historical Society photograph

## BRICK AMPHITHEATER

The brick amphitheater across the street from the American Bank Building is intended to be a flexible and functional feature of the square. A place where both large and small activities can take place, one hundred people can be seated to listen and enjoy the intimacy of a string quartet or, reversed, the amphitheater can serve as the platform for a hundred piece band or chorus.

**10 Brick Amphitheater/\$100,000**

## PORTLAND HOTEL GATE

Located exactly where it once stood, the exquisite Portland Hotel entry gate is returning to downtown directly across from Pioneer Courthouse. The wrought iron gate and fence are believed to have been designed by McKim, Mead, and White, architects of the old Portland Hotel. Ambient lighting not seen since 1951 will be provided by the cut glass fixture atop the entry gate. During the hotel's history only one President, Warren Harding, did not pass beneath this lovely feature.

**11 Portland Hotel Gate and Fencing/\$10,000**



# The touches and details which complete Pioneer Courthouse Square.

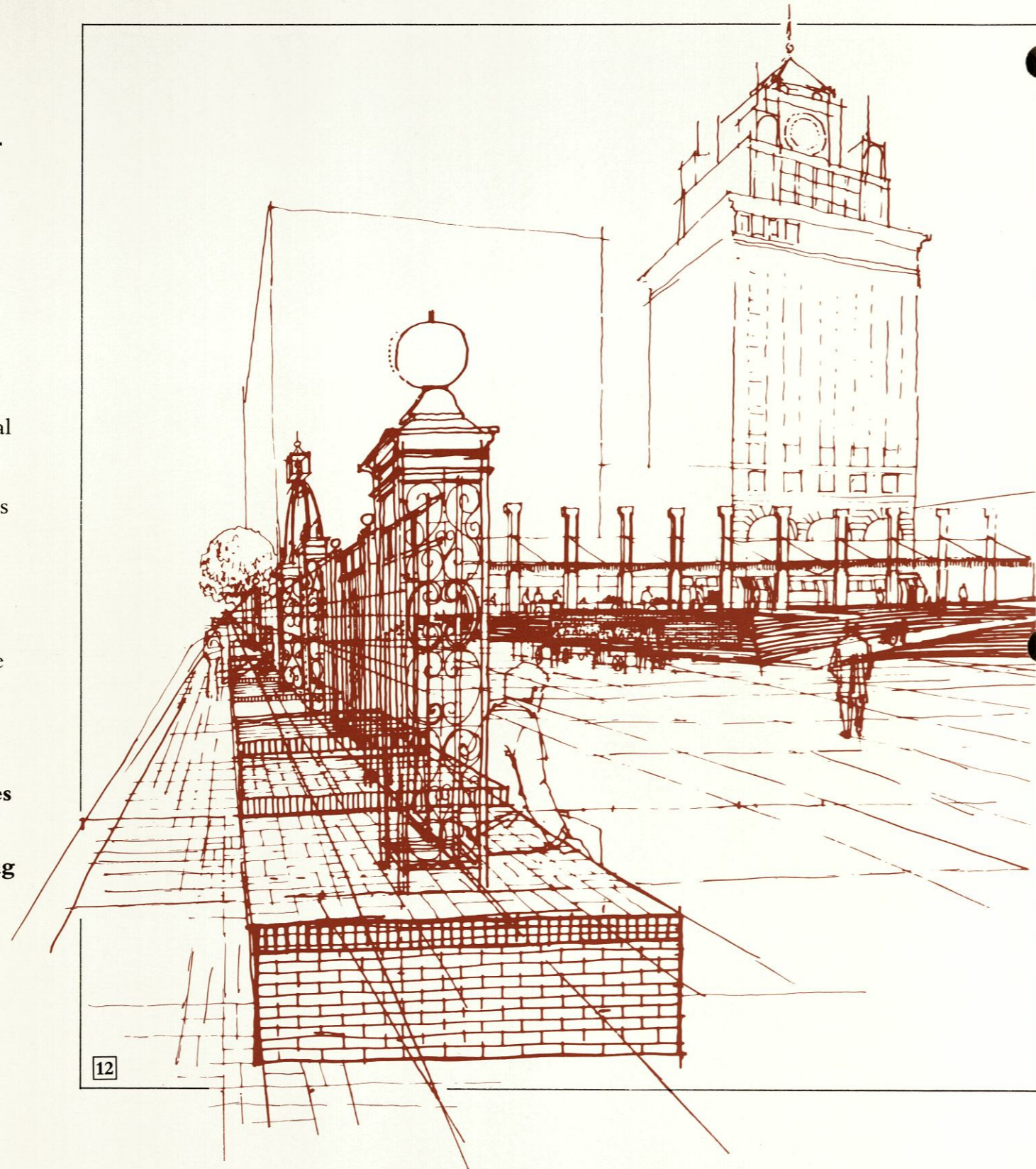
## SEATING BENCHES

Pioneer Courthouse Square's designers recognized the need for seating benches because of the square's central location, changing activities, and transit orientation. In fact, the most transit related block in the city, it links the bus and light rail system.

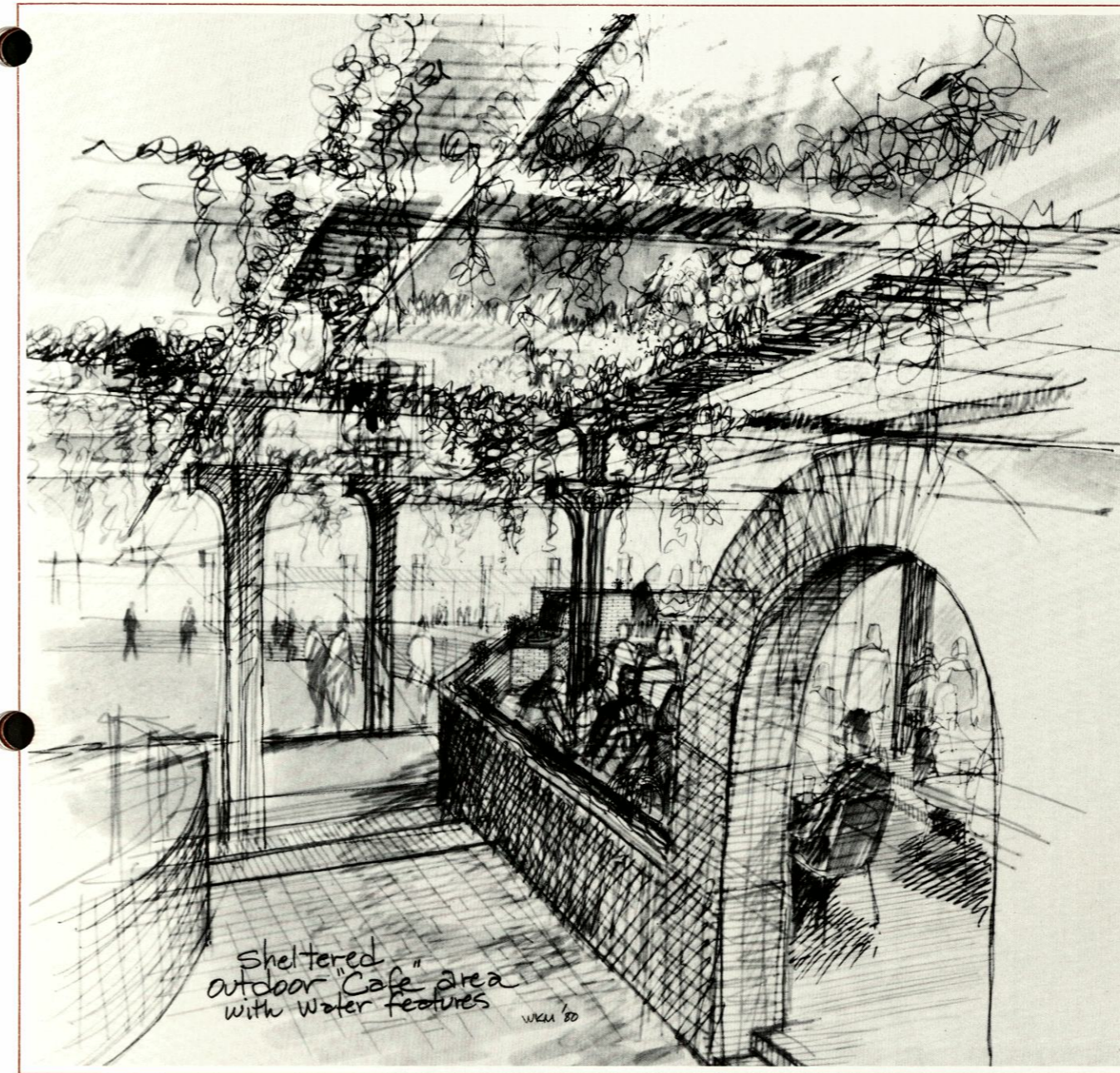
The ten benches along the Sixth Avenue transit mall are brick. The Yamhill and Morrison Street benches tucked between the Stoa Columns are terra cotta. The benches will support the universally favorite activities of conversation and people watching.

**12** Sixth Avenue Seating Benches (10)/\$4,000 each

**13** Morrison and Yamhill Seating Benches (13)/\$3,000 each



12



14 15

## PAVILION WATER FEATURE

The design team created a water feature for the pavilion which runs like a small stream along a three foot high brick wall. Lined by blue tile, it channels the water flow down three levels into and out of small, bubbling fountains. Over one hundred feet in length, it is designed to provide a pleasant and refreshing sound for people dining.

**14** Pavilion Water Feature/\$20,000

## MOSAIC FLOOR AREA

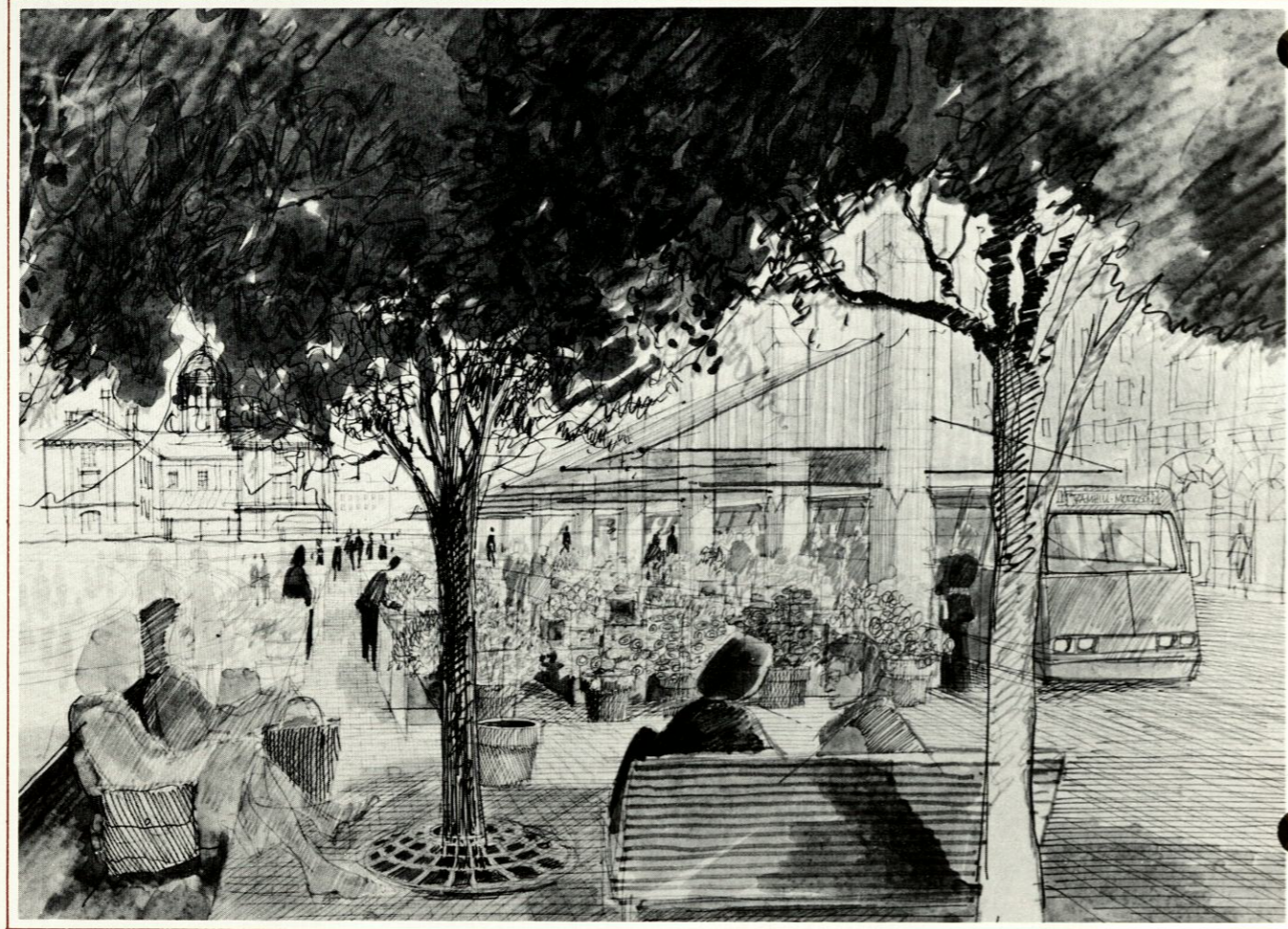
Located near the small amphitheatre under the glass pavilion is a special area of mosaic floor covering. This intricate piece is reminiscent of the Baths of Caracalla in Rome — a nice touch of detail to the elegant pergola design.

**15** Mosaic Floor Covering/\$20,000

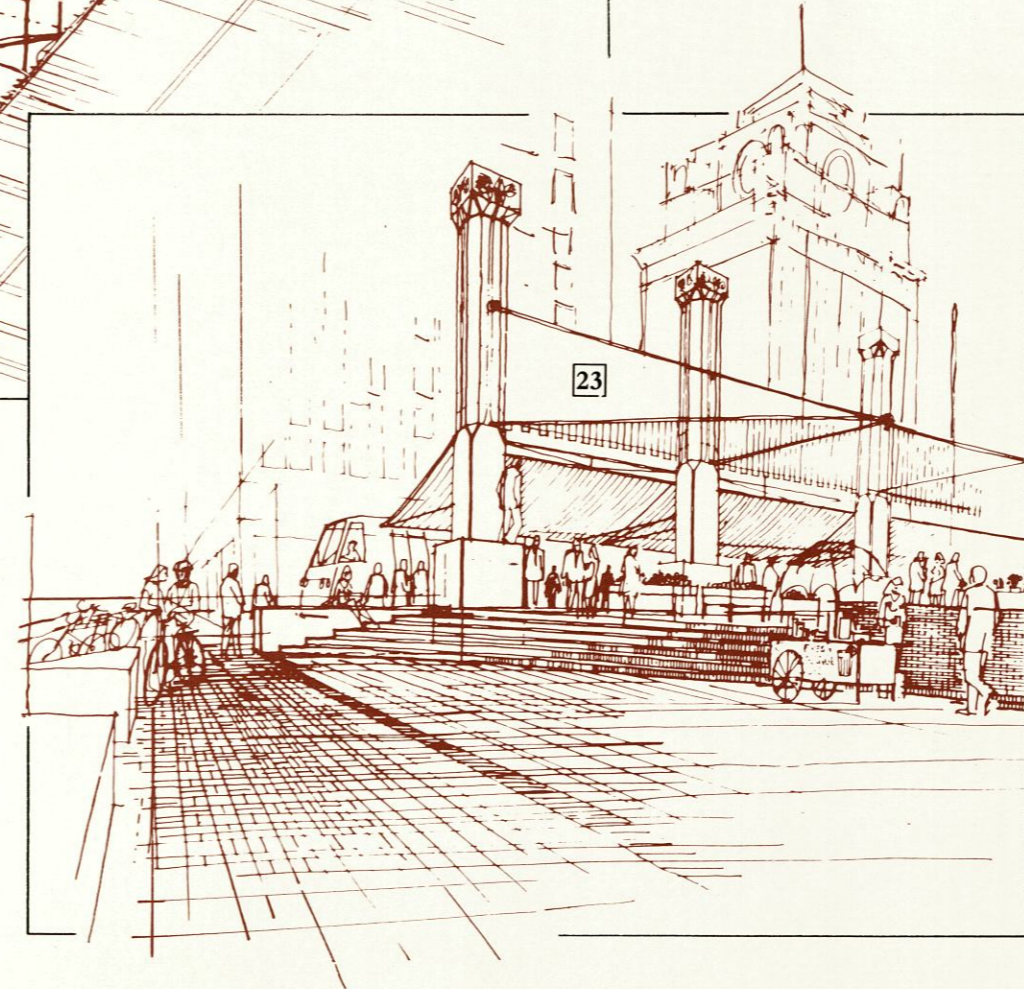
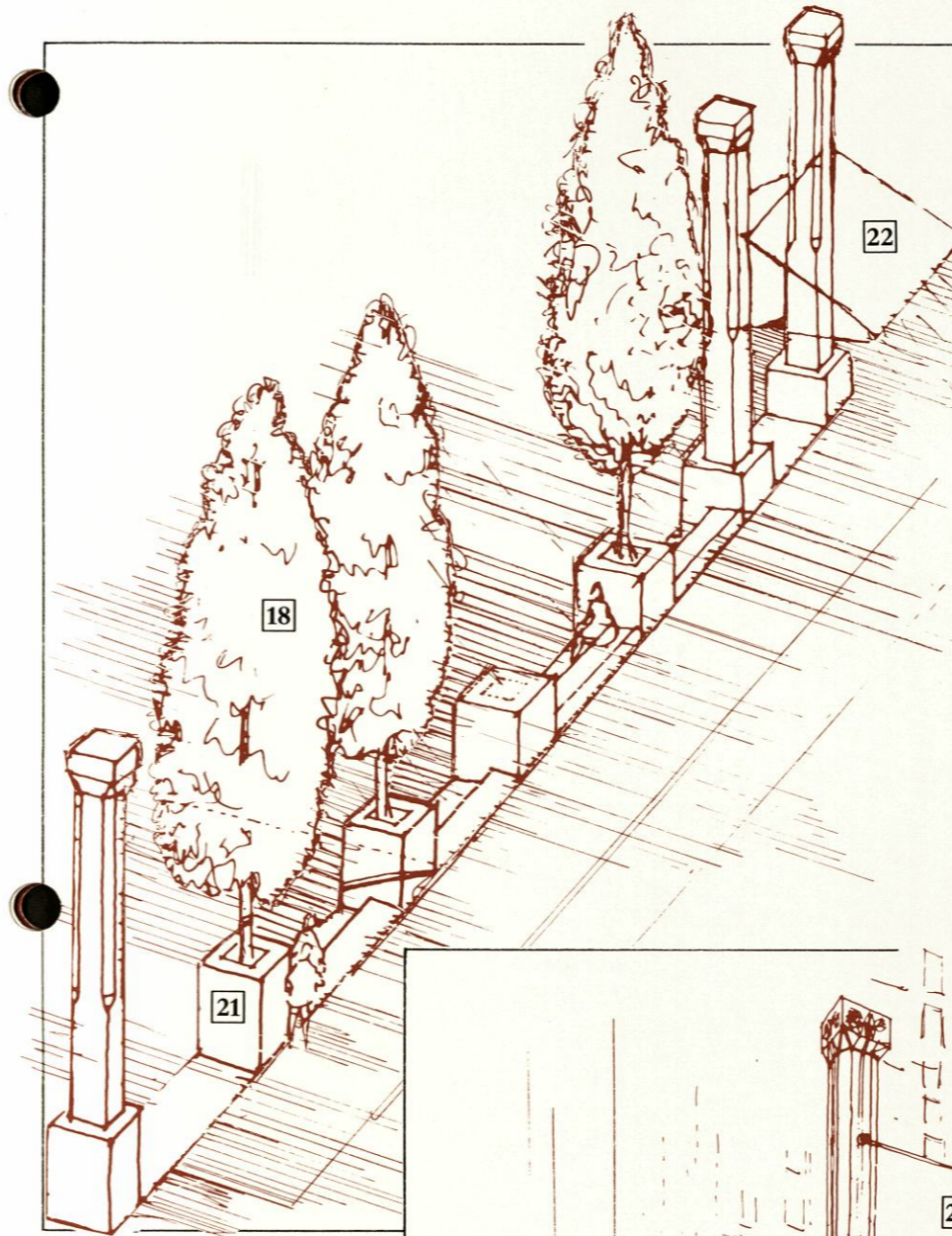
## TREES, CONTAINERS AND GRATES

While the square is not a park, the use of trees is important to the design. Small scale trees, manicured into spherical form so that people can walk under them, will be used on Pioneer Courthouse Square. Along Broadway are five Wine Sycamore Maples with five ornamental tree grates similar to those used on the mall. Three Armstrong Red Maples are planted in the terra cotta column bases on Morrison. A grove of ten Flowering Plum trees at the corner of Broadway and Yamhill are placed in above-the-ground planters. This grove provides a natural canopy of shade for people to sit and view the activities on the square.

- 16** Wine Sycamore Maples (5) / \$2,000 each
- 17** Tree Grates (5) / \$1,500 each
- 18** Armstrong Red Maples (3) In Stoa Column Bases / \$2,500 each
- 20** Flowering Plum Trees (10) / \$1,000 each
- 19** Planter Boxes (10) / \$2,500 each



17 31



## COLUMN BASES

On Morrison Street, five Stoa Column bases, six feet square, are located which will house Red Armstrong Maples. As transitional elements, the column bases define the square and provide spots of shade and color.

- 21** Column Bases (5) / \$2,000 each

## SMALL GLASS AWNING

Located on Morrison Street, the small glass awning is similar in design to its larger, more elaborate neighbor on Yamhill Street. Supported by two Stoa columns, the glass awning provides immediate cover for people getting off their light rail car.

- 22** Small Glass Awning / \$10,000

## GLASS AWNING SYSTEM

Two hundred feet of porcelain enameled steel and tinted glass will sit on top of the Stoa Columns running along Yamhill Street. The awning system will provide rain protection to those people waiting to catch their light rail cars as well as to provide cover to the open air market vendors and customers. The awning system is 8 feet wide on one side and 12 feet wide on the other side.

- 23** Glass Awning System / \$225,000

### FALLEN STOA COLUMN

Between the brick amphitheater and the glass pavilion, the designers have created a special seating area. As if a single Stoa column had fallen, its pieces informally scattered, the benches afford a pleasant seating space.

**24** Fallen Stoa Column / \$15,000

### GARBAGE RECEPTACLES

An important detail, addressed with function and style. Pioneer Courthouse Square will have specially designed bronze garbage receptacles which keep the square tidy in an aesthetically pleasing manner.

**25** Bronze Garbage Receptacles (10)/\$1,500 each

### FLAG POLES

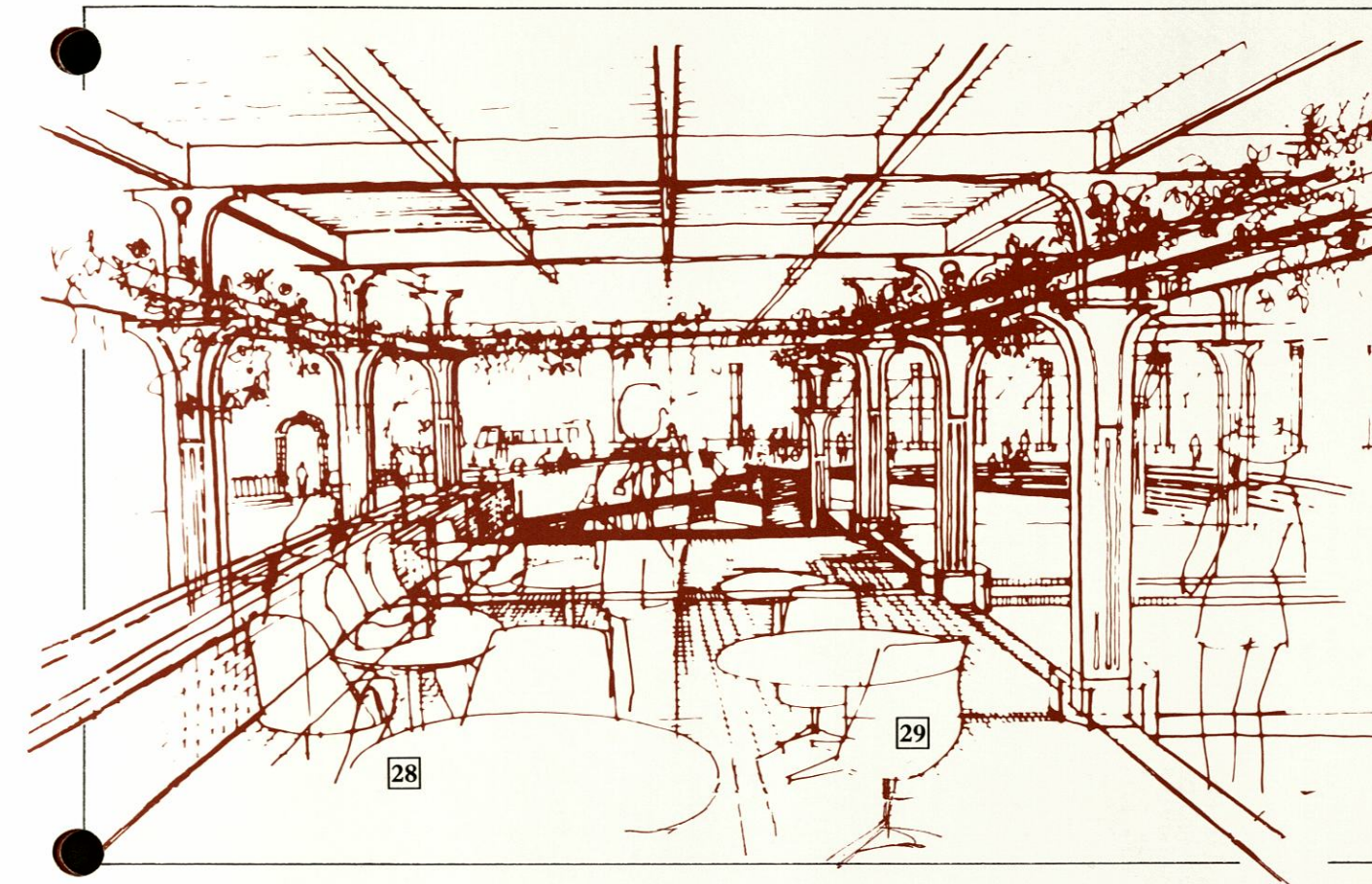
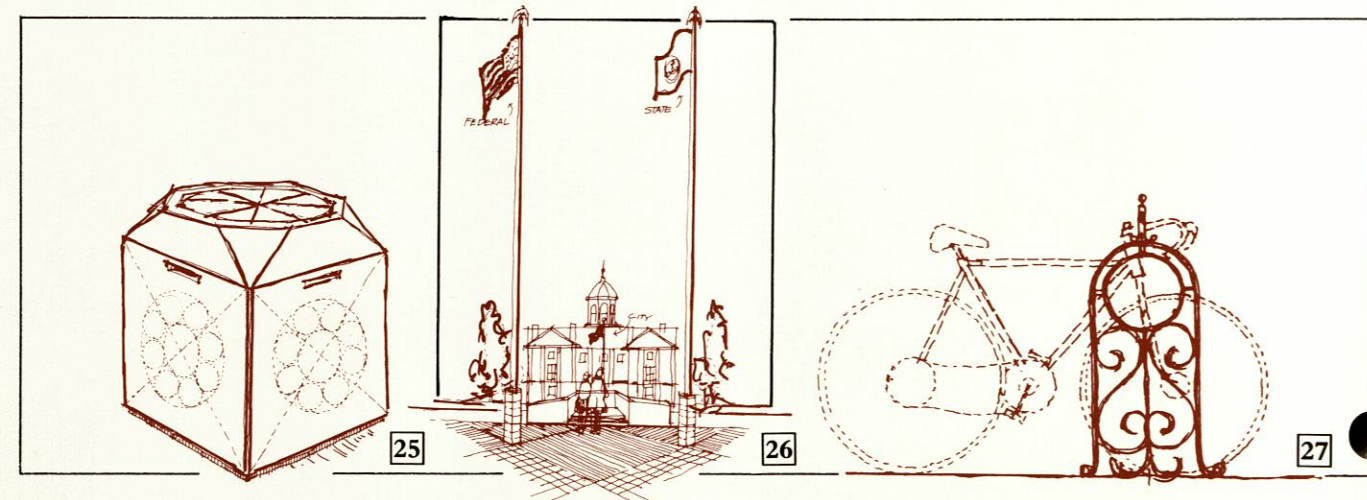
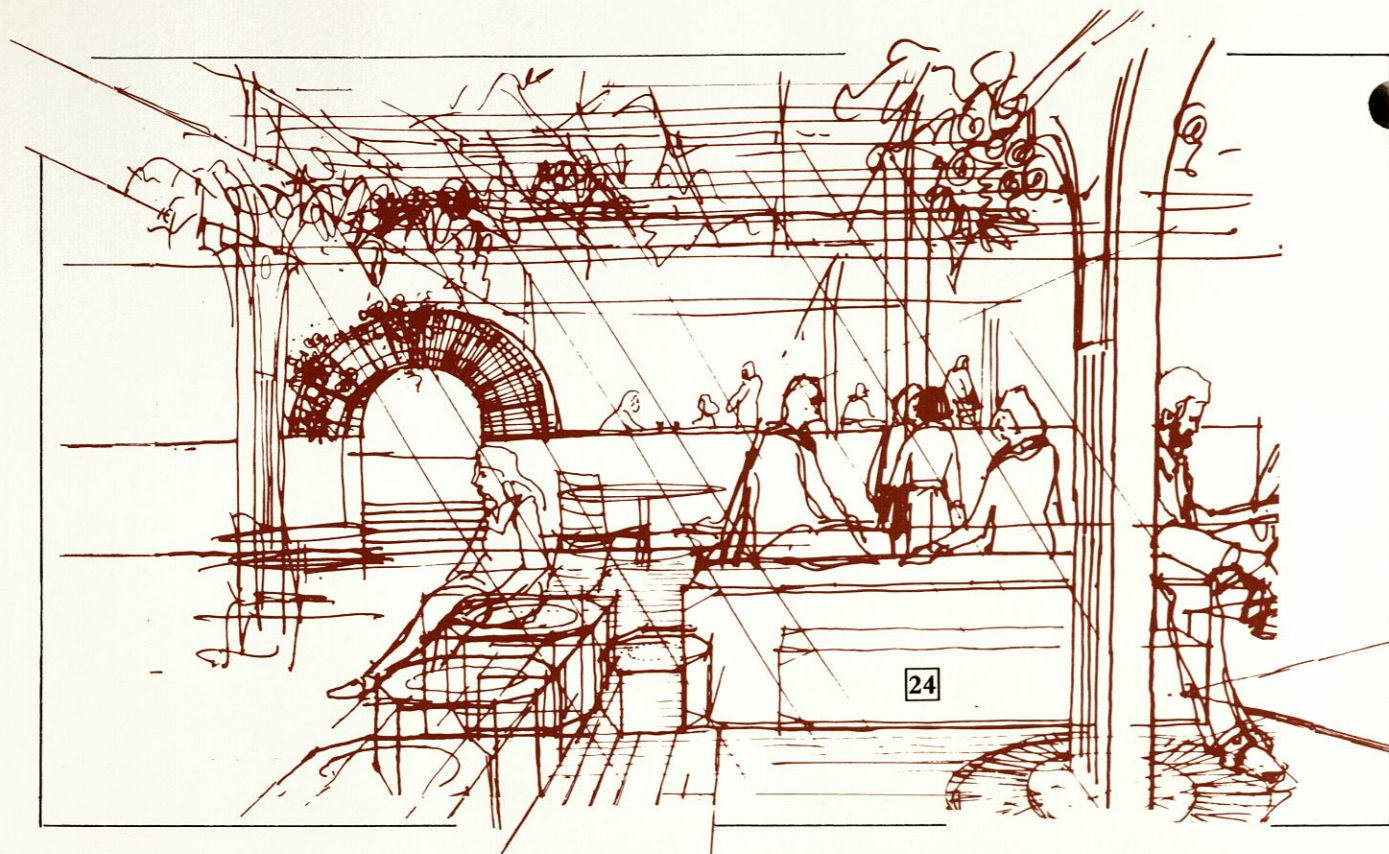
Three bronze flag poles located behind the keystone lecturn will fly the national flag, the Oregon state flag and the City of Portland flag. On special occasions, colorful banners like those which line the transit mall will wave from the tops of these poles.

**26** Bronze Flag Poles (3) / \$5,000 each

### BICYCLE RACK

Very simple and elegant bicycle racks intended to be made of bronze. More and more people are riding bicycles downtown, and these racks will be placed near each corner for their convenience.

**27** Bicycle Racks (4)/\$2,500 each



### PAVILION TABLES

Dining tables for the glass pavilion will be white in color and made of materials which can be left outside year round.

**28** Pavilion Tables (24) / \$150 each

### PAVILION CHAIRS

Matching chairs in white for the pavilion tables will be of the same contemporary style.

**29** Pavilion Chairs (100) / \$125 each

### PLAZA CHAIRS

Folding chairs which can be moved in and out of the square for year round use add another finishing touch. One hundred will be just enough to begin with.

**30** Plaza Chairs (100) / \$125 each

### CLASSICAL PARK BENCHES

Made of bronze and oak and resembling the classic park bench, these benches can be fixed in place or moved as needed.

**31** Classical Park Benches (10) / \$1,000 each

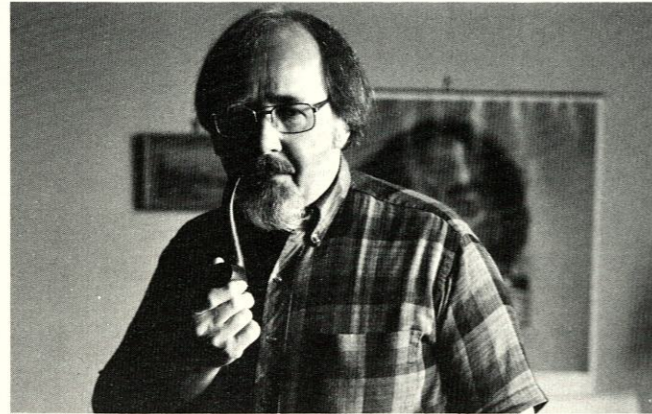
The PIONEER SQUARE DESIGN TEAM is a group of local professionals who have remarkable skills in architecture, art, planning, design, history, graphic and social communications. They have deep roots here — Portland is the home to which they return.



WILL MARTIN  
*architect and designer*



DOUGLAS MACY  
*landscape architect*



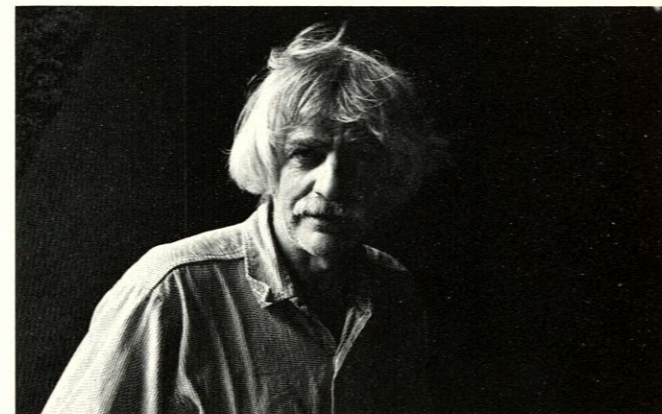
SPENCER GILL  
*writer*



TERENCE O'DONNELL  
*author/historian*



ROBERT REYNOLDS  
*designer, photographer, artist*



LEE KELLY  
*sculptor*



For information call or write  
Chris Zaik  
Office Manager  
Friends of Pioneer Square  
P.O. Box 309  
Portland, OR 97208      Area code 503/223-1613

Graphic Design: Design Council, Inc.: E. Peter Teel,  
Chas. S. Politz,  
Letha Wulf

Drawings: Martin-Soderstrom-Matteson, P.C. AIA: Will Martin  
Marc Bevins

Copy: Homer Groening