

The Red Electric, from the bright red color of its cars, was an interurban passenger train in the early 20th century. The Red Electric Trail will follow much of its original rail alignment.



» Bikes have a new trail to SW Parkhill Drive, and follow streets on the new neighborhood greenway to Terwilliger.

» Both proceed west on SW Burlingame Terrace, then left onto SW Burlingame Ave.

» Turn right on SW Chestnut, which becomes SW Vermont in a few feet, on the south side of the Hillsdale Town Center.

» Follow SW Vermont past Wilson HS and Rieke Elementary, to SW 19th where bikes continue to SW Nebraska and SW Capitol Highway.

» Pedestrians and bikes cross SW Capitol Highway and use the new bridge across the head-waters of Fanno Creek to SW Bertha Blvd.

» On the far side take SW Bertha Blvd. westbound, a quiet residential street with sharrows, but no sidewalk. Robert Gray Middle School is just to the north on SW 25th.

» Continue on SW Bertha past SW 33rd, which roughly follows the old Red Electric rail alignment.

» Proceed west through the forest passing Hayhurst School, Pendleton Park and Alpenrose Dairy to Olsen Road where the route turns south, and also turns into the Fanno Creek Trail.

You'll soon arrive at the Garden Home Community Center. The Fanno Creek Trail continues on to the Taulatin and Willamette rivers, and connections to trails south & west.

Walking and Bicycling the Red Electric Trail (RET)

As the map illustrates, there will be three routes to the Willamette River when the RET is completed. This narrative depicts what #1, the community preferred, first priority, will look like when completed.

» Start your walk at the base of the Portland Tram near the Willamette River.

» Cross the new Gibbs Pedestrian/Bicycle Bridge, then go left on historic SW Corbett to SW Slavin Road.

» Pedestrians can reach, and cross, Barbur at the new Rapid Flashing Beacon to access Terwilliger via the short but steep Buhler Cutoff Trail.

» The trail continues through the woods between Barbur and I-5 to the new bike/ped. bridge just south of Capitol Highway.

» Once across the new bridge, loop under the bridges to access the trail on the west side of Barbur, just east of Himes Park.

» Pedestrians continue up the Himes park trail to SW Nebraska and SW Terwilliger Blvd. and rejoin the bicycle route.

Some of the Red Electric Trail is in place, more will be completed soon, much of it needs your help.

Economics: Bureau of Labor Statistic's 2009 data shows 1232 employers and 8698 employees in the RET bike shed.

Next Steps

New bike/ped. bridges:

1 Transportation funding is needed for the bridge over the Himes Park gully.

2 City and federal transportation monies are committed for the Fanno Creek Headwaters crossing from Capital Hwy. to SW Bertha Blvd.

3 Secure Funding to construct the remaining segments of the trail once the ped/bike bridge is complete on the west end of Hillsdale.

Contacts/ Resources/ Volunteer

» Learn more at:
<http://swtrails.org/>

» Call, or email, your support to city and county officials; the RET offers:

- » active transportation for work and leisure,
- » safe routes to schools (Wilson, Reike, Robert Gray, Haryhurst, ...)
- » access to local businesses, library, farmers' market, parks, swimming pools, and more.



Partial funding for this brochure was made possible through a grant from the Office of Neighborhood Involvement and Southwest Neighborhoods, Inc. Small Grants Program.

Arriving Soon

Portland's

Red Electric Trail

A safe, family-friendly, active transportation route.



Re-Connecting Washington County, South West Portland, the Willamette, and you.

Legend

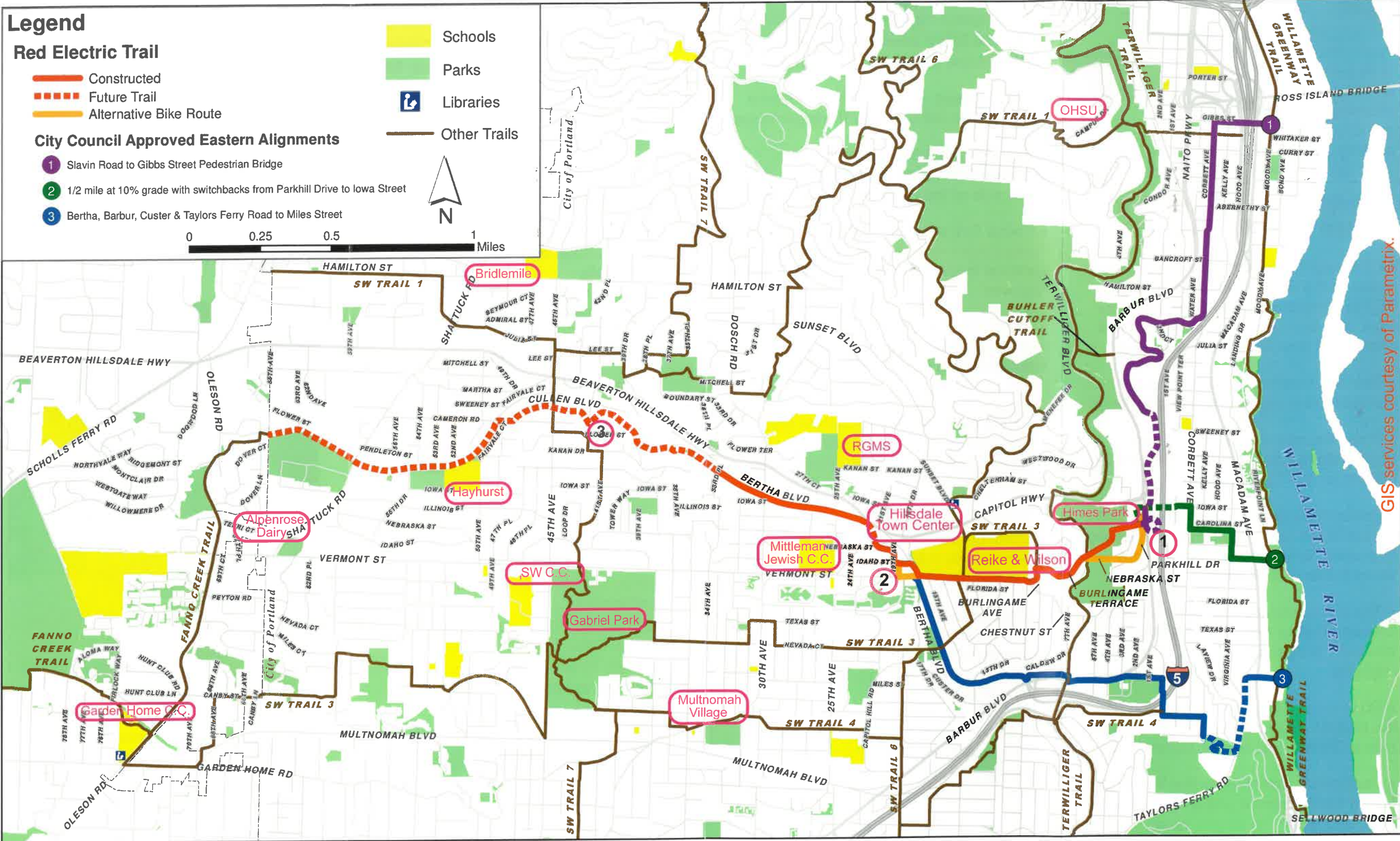
Red Electric Trail

- Constructed
- Future Trail
- Alternative Bike Route

City Council Approved Eastern Alignments

- 1 Slavin Road to Gibbs Street Pedestrian Bridge
- 2 1/2 mile at 10% grade with switchbacks from Parkhill Drive to Iowa Street
- 3 Bertha, Barbur, Custer & Taylors Ferry Road to Miles Street

- Schools
- Parks
- Libraries
- Other Trails



GIS services courtesy of Parametrix.