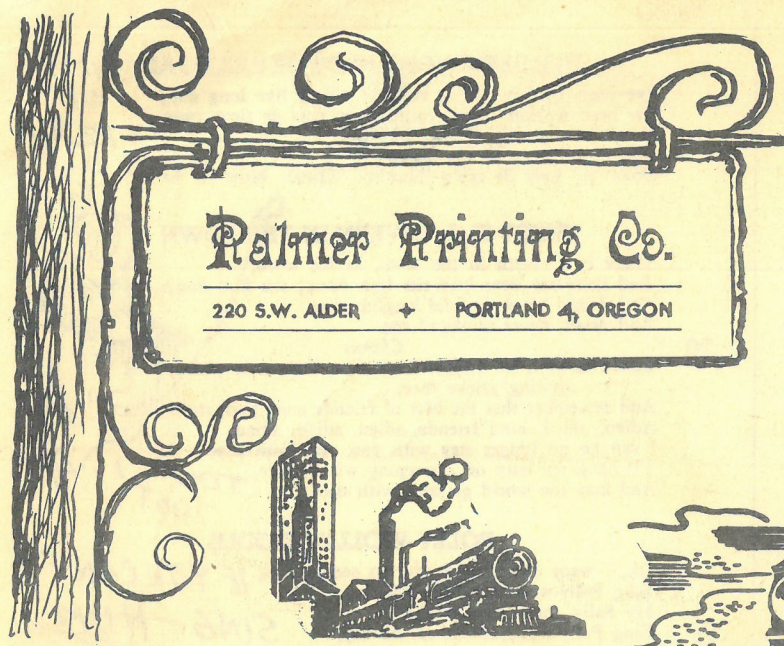
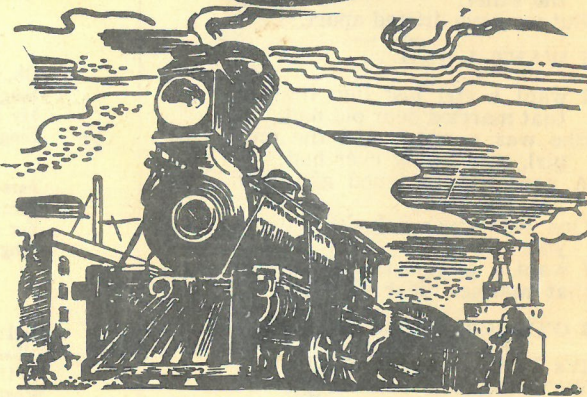
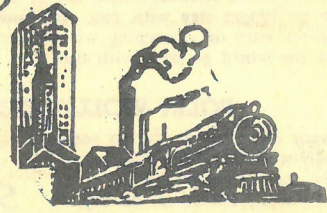


SOUVENIR PROGRAM

Portland - 1956

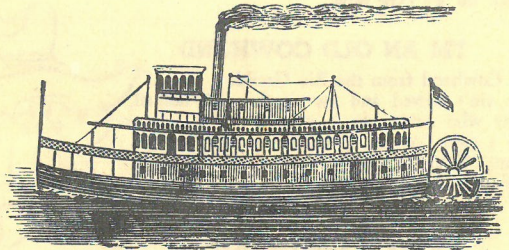


MEN'S VELOUR CALF BUTTON AND LACE \$2.48



HOME ON THE RANGE
Oh, give me a home where the buffalo roam,
Where the deer and the antelope play,
Where seldom is heard a discouraging word,
And the skies are not cloudy all day.
Home, Home on the Range;
Where the deer and the antelope play;
Where seldom is heard a discouraging word,
And the skies are not cloudy all day.

27



SAILING
Sailing, Sailing, over the bounding main,
For many a stormy wind shall blow ere Jack comes home again
Sailing, Sailing, over the bounding main;
For many a stormy wind shall blow ere Jack comes home again.

AFTER THE BALL
After the Ball is over, After the break of morn,
After the dancers' leaving, After the stars are gone;

GOODNIGHT, LADIES
Goodnight, ladies! Goodnight, ladies!
Goodnight, ladies! We're goin' to leave you now.
Merrily we roll along, roll along, roll along;
Merrily we roll along, Over the dark blue sea.

SWEET GENEVIEVE
O, Genevieve, Sweet Genevieve,
The days may come the days may go,
But still the hands of mem'ry weave
The blissful dreams of long ago.

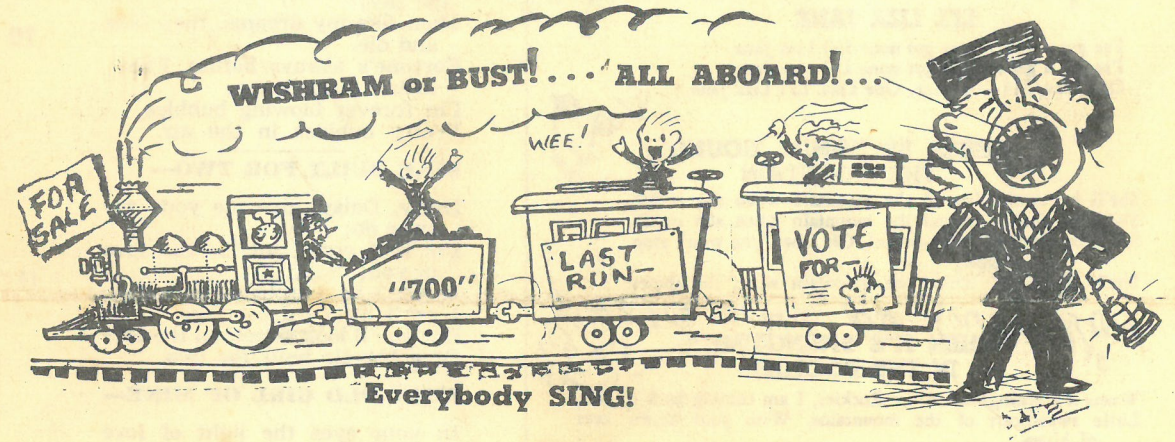
SEND for YOUR FREE COPY of the INTERNATIONAL CONSUMERS MAGAZINE, 540 Jessie Ave., Winnipeg READ AND KEEP POSTED ON FUTURE HAPPENINGS

THE BAND PLAYED ON
Casey would waltz with a strawberry blonde,
And The Band Played On.
He'd glide 'cross the floor with the girl he adored,
And The Band Played On.
But his brain was so loaded it nearly exploded,
The poor girl would shake with alarm.
He'd ne'er leave the girl with the strawberry curls
And The Band Played On.

LITTLE ANNIE ROONEY
She's my sweetheart, I'm her beau;
She's my Annie, I'm her Joe,
Soon we'll marry, never to part,
Little Annie Rooney is my sweetheart!

WHERE IS MY LITTLE DOG GONE?
Oh where, oh where is my little dog gone,
Oh where, oh where can he be?
With his ears cut short and his tail cut long,
Oh where, Oh where is he?

AULD LANG SYNE
Should auld acquaintance be forgot and never brought to mind?
Should auld acquaintance be forgot and days of Auld Lang Syne?
For Auld Lang Syne, my dear, for Auld Lang Syne,
We'll tak' a cup o' kindness yet, for Auld Lang Syne.

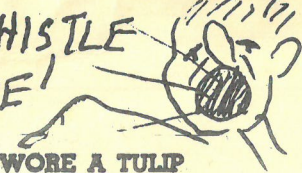


The Last Steam Engine to Leave Portland Union Station, SUNDAY, MAY, 20, 1956



- BILL BOARDMAN**
Squeeze-box
- MAURICE PRICE**
Banjo Mandolin-guitar
- SAM PALMER**
Sing-song Program
- BILL PALMER**

TOOT YER WHISTLE
ON THIS ONE!



1 WHEN YOU WORE A TULIP

When you wore a tulip, a sweet yellow tulip, and I wore a big red rose,
When you caressed me, 'twas then Heaven blessed me, what a blessing, no one knows.
You made life cheerie, when you called me dearie, 'Twas down where the blue grass grows,
Your lips were sweeter than julep, when you wore that tulip And I wore a big red rose.

2 OHI SUSANNA

I came from Alabama wid my banjo on my knee,
I'm g'wan to Louisiana, my true love for to see,
It rained all night the day I left,
The weather it was dry,
The sun so hot I froze to death;
Susanna don't you cry.
Oh! Susanna oh! don't you cry for me,
I've come from Alabama wid my banjo on my knee.

LET'S GO!



3 LI'L LIZA JANE

I've got a gal an' you got none Li'l Liza Jane,
I've got a gal an' you got none Li'l Liza Jane,
Ohe Liza, Li'l Liza Jane, Ohe Liza, Li'l Liza Jane.

4 SHE'LL BE COMIN' ROUND THE MOUNTAIN

She'll be comin' 'round the mountain when she comes,
She'll be comin' 'round the mountain when she comes,
She'll be steamin' and a-puffin', Oh Lawd; she won't stop for nothin',
She'll be comin' 'round the mountain when she comes.

HARMONY ON THIS ONE!
5 WHEN IT'S SPRINGTIME IN THE ROCKIES

When it's Springtime in the Rockies, I am coming back to you,
Little sweetheart of the mountains, With your bonny eyes of blue,
Once again I'll say "I love you," While the birds sing all the day,
When it's Springtime in the Rockies, In the Rockies, far away.

6 I'M SITTING ON TOP OF THE WORLD

I'm sitting on top of the world,
Just rolling along, just rolling along,
I'm quitting the blues of the world,
Just singing a song, just singing a song,
"Glory Hallelujah", I just phoned the Parson,
"Hey, Par get ready to call",
Just like Humpty Dumpty, I'm going to fall,
I'm sitting on top of the world,
Just rolling along, just rolling along.

SING IT!



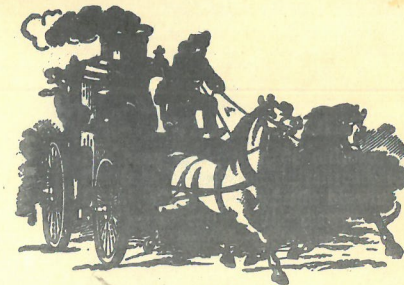
WHEN I DREAM OF OLD ERIN

When I dream of old Erin I'm dreaming of you,
With your sweet, roguish smile and your true eyes of blue,
For my love, like the Shamrock, each day stronger grew;
When I dream of old Erin, I'm dreaming of you.

TA-RA-RA BOOM-DE-E

A sweet Tuxedo girl you see, Queen of swell society,
Fond of fun as fond can be, When it's on the strict Q.T.
I'm not too young, I'm not too old, Not too timid, not too bold,
Just the kind you'd like to hold, Just the kind for sport I'm sold.
Chorus
Ta-ra-ra Boom-der-e Ta-ra-ra Boom-der-e
Ta-ra-ra Boom-der-e Ta-ra-ra Boom-der-e
Ta-ra-ra Boom-der-e Ta-ra-ra Boom-der-e
Ta-ra-ra Boom-der-e Ta-ra-ra Boom-der-e

BIOW!



PUT ON YOUR OLD GRAY B—

Put on your old gray bonnet with the blue ribbon on it,
While I hitch ol' Dobbin to the shay.
And thru the fields of clover We'll drive up to Dover
On our golden wedding day.

BUBBLES—

I'm forever blowing bubbles, Pretty bubbles in the air;
They fly so high, nearly reach the sky;
Then like my dreams, they fade and die.
Fortune's always hiding, I've looked everywhere.
I'm forever blowing bubbles, Pretty bubbles in the air.

BIKE BUILT FOR TWO—

Daisy, Daisy, give me your answer do;
I'm half crazy, all for the love of you;
It won't be a stylish marriage, I can't afford a carriage,
But you'll look sweet, on the seat Of a bicycle built for two.

THAT OLD GIRL OF MINE—

In your eyes the light of love was softly beaming
My dearie, so sweet and cheery:
In your hair a shade of gold was gleaming,
Like moonbeams that shine.
Lou, Lou, I still love you
For the sake of Auld Lang Syne,
And I call you, when I fall to sleep a-dreaming
That old gal of mine.

Wonder Who's Kissing Her Now

I wonder who's kissing her now,
I wonder who's teaching her how
I wonder who's looking into her eyes,
Breathing sighs, telling lies—
I wonder who's buying the wine
For lips that I used to call mine;
I wonder if she ever tells him of me,
I wonder who's kissing her now.

OLD MILL STREAM—

Down by the old mill stream,
Where I first met you,
With your eyes of blue,
Dressed in gingham, too.
It was then I knew, that I loved you true,
You were 16, my village queen,
Down by the old mill stream.



THE BAND PLAYED ON

Casey would waltz with the strawberry blonde
And the band played on;
He'd glide 'cross the floor, with the girl he adored,
And the band played on.
But his one little girl in blue, lad,
Who won your father's heart,
Became your mother, I married the other,
But we have drifted apart.

I WANT A GIRL . . .

I want a girl just like the girl that married dear old dad;
She was a pearl, and the only girl, that daddy ever had;
A good old-fashioned girl with heart so true,
One who loves nobody else but you.
I want a girl just like the girl that married dear old dad.

3 O'CLOCK IN TH' MORNING

It's 3 o'clock in the morning,
We've danced t' whole night thru
And daylight soon will be dawn'g
Just one more waltz with you.
That melody so entrancing,
Seems to be made for us two;
I could just keep right on danc'g
Forever dear, with you.
for you;

THERE'S A LITTLE SPARK OF LOVE STILL BURNING—

There's a little spark of love still burning,
There's a longing there for your returning,
I want you! I do!
So come, come to my heart agin,
Come, come set that love aflame
For there's a little spark of love still burning, & yearning for you.

OH MY DARLIN' Clementine—

In a cavern, in a canon,
Excavating for a mine,
Dwelt a miner, forty-niner,
And his daughter, Clementine.

Oh my darling, oh my darling,
Oh my darling Clementine,
You are lost and gone forever,
Dreffful sorry, Clementine.

icular about their hair, are still
Meet Me Tonight in Dreamland
You Tell Me Your Dreams—
Till We Meet Again—

I'VE BEEN WORKIN' ON DE RAILROAD

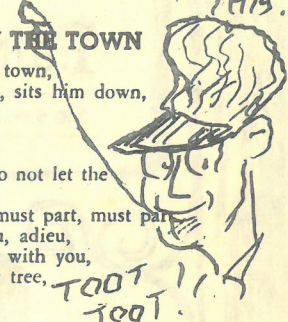
I've been workin' on de railroad all de live long day;
I've been workin' on de railroad, to pass de time away.
Doan' yo' hyar de whistle blowin',
Rise up so early in the mawn;
Doan' yo' hyar de cap'n shoutin': "Dinah, blow yo' hawn"

LOTS OF STEAM ON THIS.

THERE IS A TAVERN IN THE TOWN

There is a tavern in the town, in the town,
And there my dear love sits him down, sits him down,
And drinks his wine 'mid laughter free,
And never, never thinks of me.

Fare-thee-well, for I must leave thee, Do not let the parting grieve thee,
And remember that the best of friends must part, must part
Adieu, adieu, kind friends, adieu, adieu, adieu,
I can no longer stay with you, stay with you,
I'll hang my harp on a weeping willow tree,
And may the world go well with thee.

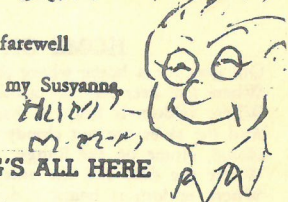


POLLY-WOLLY-DOODLE

Oh, I went down South, for to see my Sal,
Sing Polly-wolly-doodle all de day;
My Sally am a spunky gal,
Sing Polly-wolly-doodle all de day.

IF YOU CAN'T SING - HUM!

Fare-thee-well, farewell, fare-thee-well farewell
Fare-thee-well my fairy fay
For I'm gwine to Lousiana, for to see my Susyanna,
Sing Polly-wolly-doodle all de day.

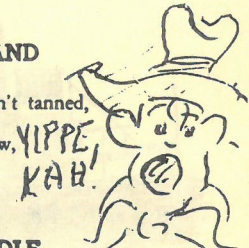


HAIL! HAIL! THE GANG'S ALL HERE

Hail! Hail! The Gang's All Here,
What the heck do we care, what the heck do we care
Hail! Hail! The Gang's All Here,
What the heck do we care now.

I'M AN OLD COWHAND

I'm An Old Cowhand from the Rio Grande
But my legs ain't bowed and my cheeks ain't tanned,
I'm a cowboy who never saw a cow,
Never roped a steer 'cause I don't know how,
And I sho' ain't fixin' to start in now.
Yip-py-I-O-Ki-Ay, Yip-py I-O-Ki-Ay.

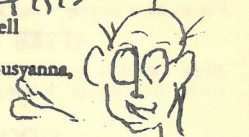


POLLY-WOLLY-DOODLE

Oh, I went down South, for to see my Sal,
Sing Polly-wolly-doodle all de day;
My Sally am a spunky gal,
Sing Polly-wolly-doodle all de day.

BLOW OFF STEAM ON THIS ONE!

Fare-thee-well, farewell, fare-thee-well farewell
Fare-thee-well my fairy fay
For I'm gwine to Lousiana, for to see my Susyanna,
Sing Polly-wolly-doodle all de day.

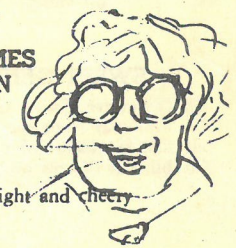


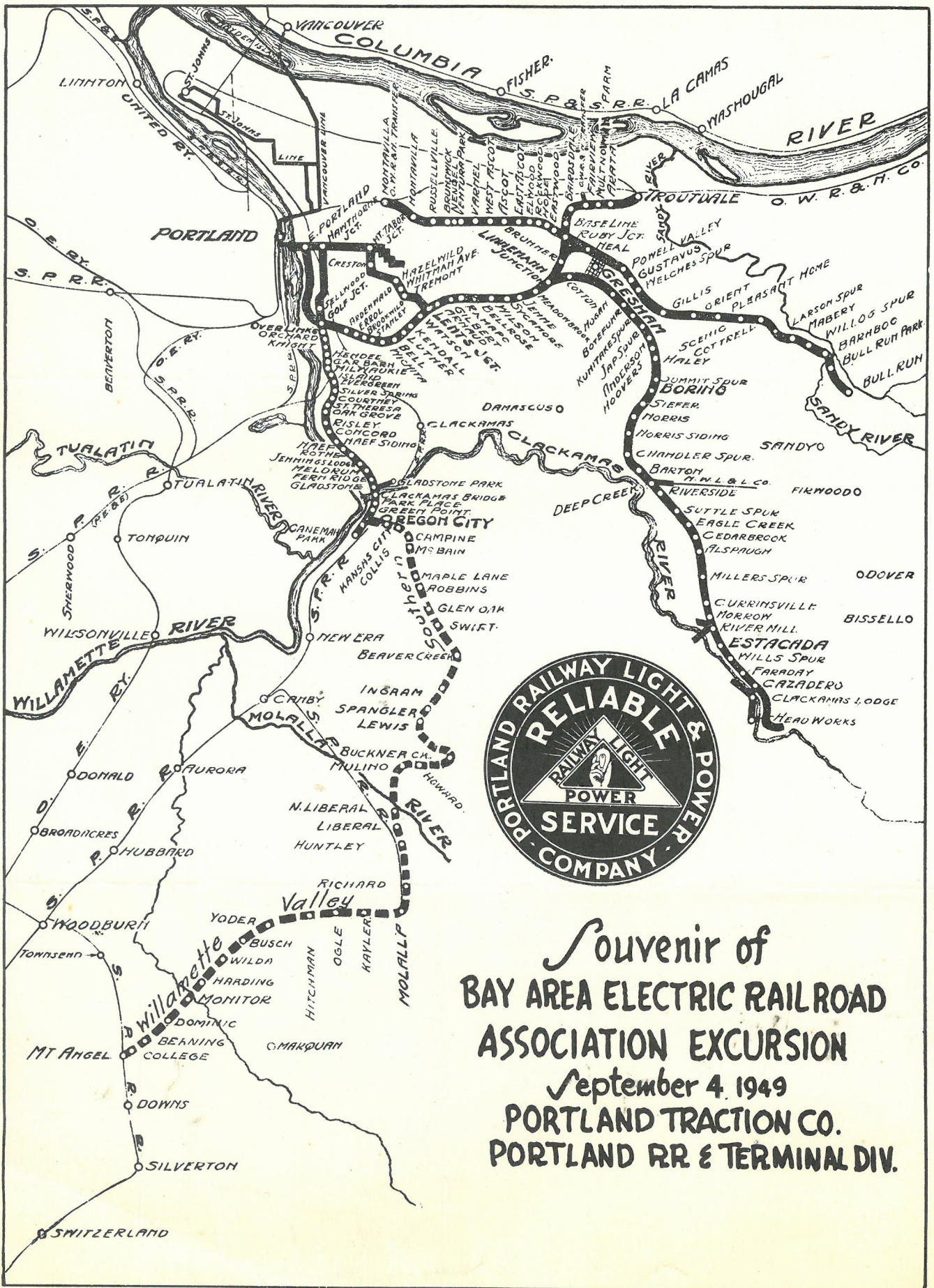
HELLO! MA BABY

Hello! Ma Baby, Hello! ma honey, Hello! ma ragtime gal,
Send me a kiss by wire, Baby my heart's on fire!
If you refuse me, Honey, you'll lose me, Then you'll be left alone
Oh! baby, Telephone and tell me I'se your own.

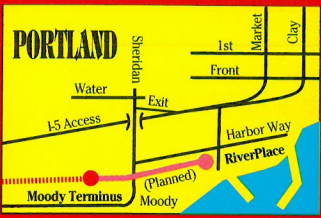
WHEN THE MOON COMES OVER THE MOUNTAIN

When the moon comes over the mountain
Ev'ry beam, brings a dream dear, of you.
Once again we stroll 'neath the mountain
Thru' that rose covered valley we knew
Each day is gray and dreary but the night is bright and cheery
When the moon comes over the mountain
I'm alone with my mem'ries of you.



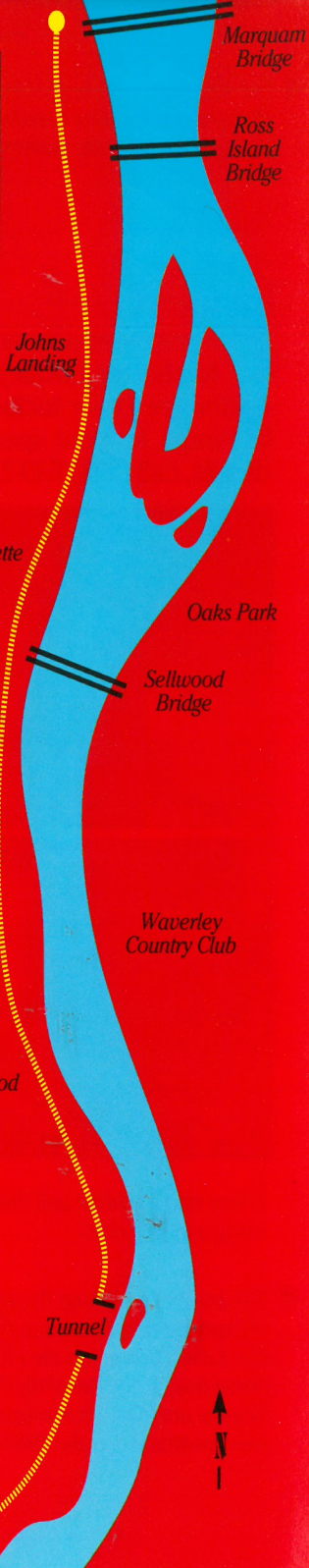


Souvenir of
 BAY AREA ELECTRIC RAILROAD
 ASSOCIATION EXCURSION
 September 4, 1949
 PORTLAND TRACTION CO.
 PORTLAND RR & TERMINAL DIV.



YOU CAN SEE FOR MILES.

This leisurely 90-minute tour will take you between Portland and Lake Oswego. Along the way, enjoy spectacular views hidden from the rest of the world. Lush parks, wooded forests and stately manors are just a few of the sights on this 13 mile adventure. You'll also cross a trestle high above the river! Each season offers riders an ever-changing landscape of foliage and color.

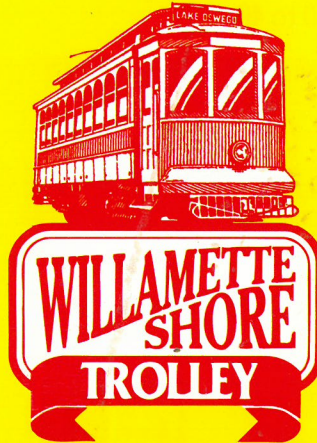


OLD #300.
This bright yellow trolley was built by the American Car Company in 1913 and operated for 20 years before it was retired. Its brass fixtures and cherry wood walkover seats still glow with their original luster.

Old #300 is fully enclosed with opening windows and heated seating for year 'round touring comfort.

BLACKPOOL BELLE.
The newest member of the Willamette Shore Trolley line, Blackpool Belle comes by way of England, where she was built to ferry vacationers along the Irish Sea coast. On night-time runs, she glitters with more than 800 lights, producing a dazzling spectacle upon the Willamette.

Blackpool Belle is ideal for enjoying open air outings along the river.



WILLAMETTE SHORE TROLLEY

333 S. State Street, Suite 500
Lake Oswego, Oregon 97034

Reservations (503) 222-2226

ADVANCED RESERVATIONS
ARE REQUIRED

TROLLEY

Scenic Tours



ALL ABOARD!



TAKE A RIDE INTO HISTORY!

Journey back to the turn-of-the-century as you tour the scenic Willamette River aboard a historic vintage trolley.

Each trolley is an authentic vintage tram which dates back to the early 1900's. Painstaking restoration has returned each car to its original beauty, giving all on board a rare opportunity to enjoy the past as well as the present.

MAKE YOUR EVENT MORE EVENTFUL.

Whatever the occasion, Willamette Shore Trolley puts you on track for a great time!

Corporate Events

Easter

Family Events

Mother's Day

Birthday Parties

Father's Day

Special Occasions

4th of July

Convention Tours

Labor Day

Employee Functions

Christmas Boat Parade



© Dave Rowland

MAKE A DAY OF IT.

Extend your visit in downtown Lake Oswego and enjoy village-style shopping, interesting galleries, and a variety of restaurants – casual to elegant. Just reserve a later return trip.

THE MORE THE MERRIER.

Willamette Shore Trolley tours are ideal for group get-togethers. Each trolley can accommodate up to 40 passengers. Special fares and food and beverage options are available for groups of 10 to 40.

◀ Old #300's hand-wrought brass fixtures and gleaming cherry wood walkover seats reflect a proud past, when trolley travel was the preferred mode of transportation.

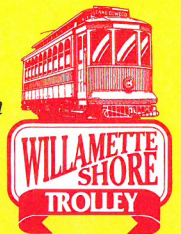
PRIVATE CHARTERS.

For a more private outing, you may wish to charter a trolley. We'll be happy to customize a tour, including food and beverage, for your special event. For full details, call (503) 640-1434.

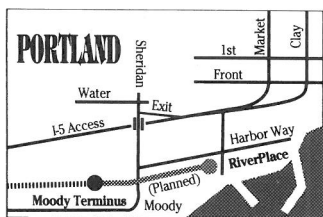


Young and old alike will thrill to the excitement of a vintage trolley ride. ▲

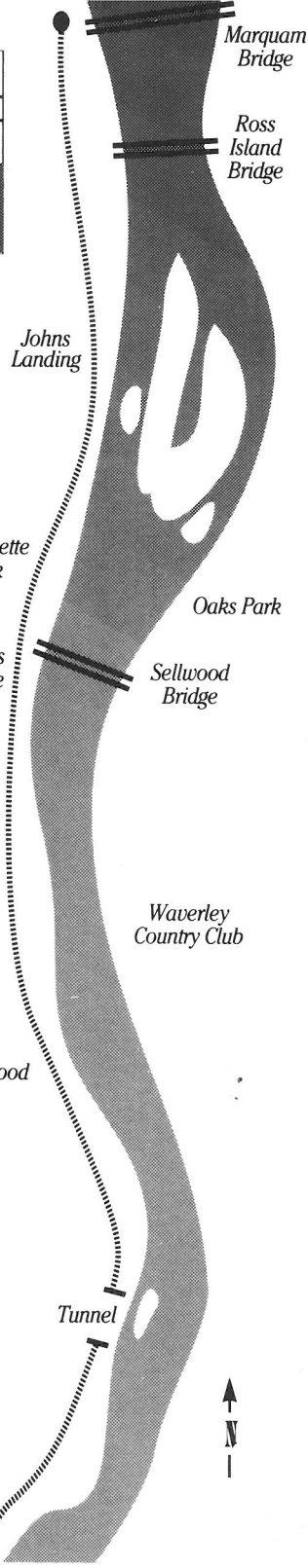
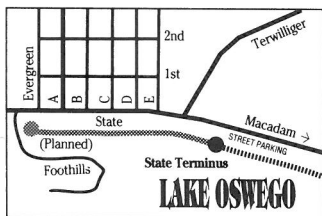
◀ The trolley runs along the scenic Willamette River between Portland and Lake Oswego on the old Jefferson Street line, a portion of the Portland, Eugene and Eastern Railway which was constructed in the 1880's.



© Dave Rowland



YOU CAN SEE FOR MILES. This leisurely 90-minute tour will take you between Portland and Lake Oswego. Along the way, enjoy spectacular views hidden from the rest of the world. Lush parks, wooded forests and stately manors are just a few of the sights on this 13 mile adventure. You'll also cross a trestle high above the river! Each season offers riders an ever-changing landscape of foliage and color.



SPRING/FALL SCHEDULE (2/29/92 to 5/28/92, 9/14/92 to 12/27/92 – Saturdays & Sundays)

FROM PORTLAND (Board at 2511 SW Moody, under the Marquam Bridge)						
FROM LAKE OSWEGO (Board north of Tenwilliger on State Street)						
DEPARTS PORTLAND	10:00 am	12:00 pm	2:00 pm	4:00 pm		
DEPARTS L. OSWEGO	11:00 am	1:00 pm	3:00 pm	5:00 pm*		

SUMMER SCHEDULE (5/30/92 to 9/13/92 – Tuesdays thru Sundays)

FROM PORTLAND (Board at 2511 SW Moody, under the Marquam Bridge)						
FROM LAKE OSWEGO (Board north of Tenwilliger on State Street)						
DEPARTS PORTLAND	10:00 am	12:00 pm	2:00 pm	4:00 pm	6:00 pm	8:00 pm
DEPARTS L. OSWEGO	11:00 am	1:00 pm	3:00 pm*	5:00 pm	7:00 pm	9:00 pm*

Roundtrips between Portland and Lake Oswego take 90 minutes, rain or shine. Schedule subject to change without notice. **Bold type indicates trips not running Tuesdays, Wednesdays and Thursdays.**

*No round trip.

FAMILY FARES

- \$15 Family of 3
- \$18 Family of 4
- \$20 Family of 5
- \$22 Family of 6

SINGLE FARES

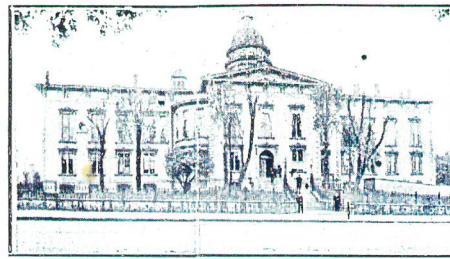
- \$7 Adult Fare
- \$5 Senior Fare 55+
- \$5 Child Fare (12 and under)

Willamette Shore Trolley
 333 S. State Street, Suite 500
 Lake Oswego, OR 97034
Reservations: 503-222-2226
 Charters: 503-640-1434

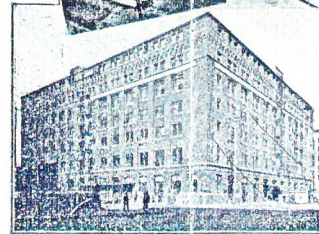
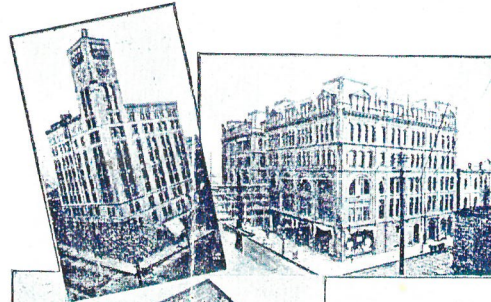




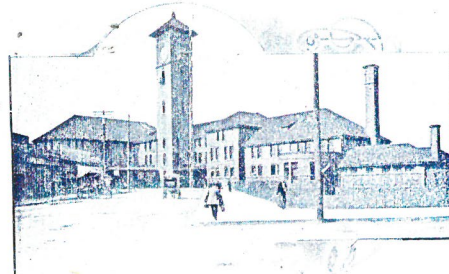
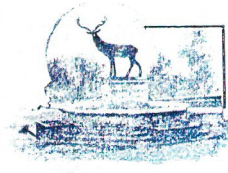
PORTLAND CITY HALL



MULTNOMAH COUNTY COURTHOUSE



OFFICE BUILDINGS



UNION DEPOT

"SEEING PORTLAND"

DAILY AND
SUNDAY TOURS

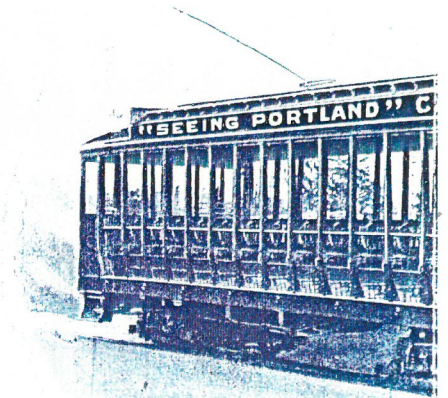
CAR LEAVES THIRD AND ALDER STREETS

10:00 A. M.
2:00 P. M.
2:30 P. M.

FARE 50 CENTS

Points of Interest and Suburban Trips on Lines of Portland Consolidated Railway Company

- Vancouver Barracks
 - Riverview Cemetery
 - Lewis and Clark Exposition
 - City Park
 - City Hall Museum
 - Public Library Building
 - Saw Mills
 - Portland Heights
 - Willamette Heights
 - Mount Tabor
 - St. Johns
 - Woodstock
 - Montavilla
 - Irvington
- All 5-Cent Fare
Except Vancouver Branch

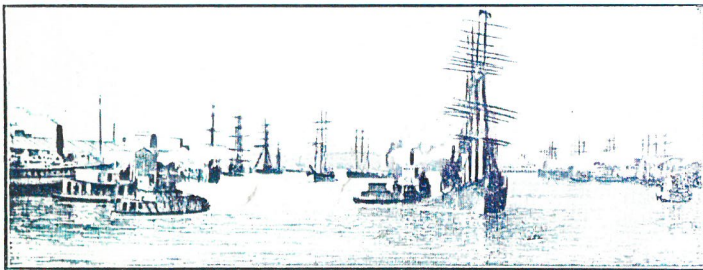


TOURISTS AND VISITORS

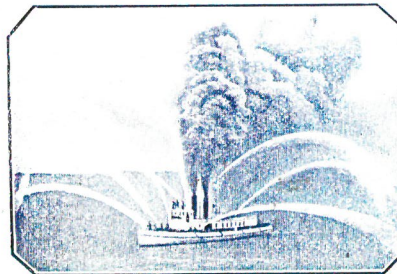
should not fail to make a trip on the Portland
land" Observation Car. It gives the stranger a
comfortable means of viewing the city.

The routes traversed by these cars are the
portion of Portland, including the Willamett
Heights. It gives the passenger a fine opportunity
and commercial industries, Portland Harbor and
vessels of all nations, the wharves, docks and
different schools and colleges; numerous edifices
"cozy" homes; principal hotels and theaters. The
Chamber of Commerce, in fact all public buildings,
from the various elevations reached by the
views may be had of the snow-capped mountain
the Lewis and Clark Exposition Grounds.

Principal places of interest along the route
guide accompanying the car. The ride occupies
fare for the trip is 50 cents.

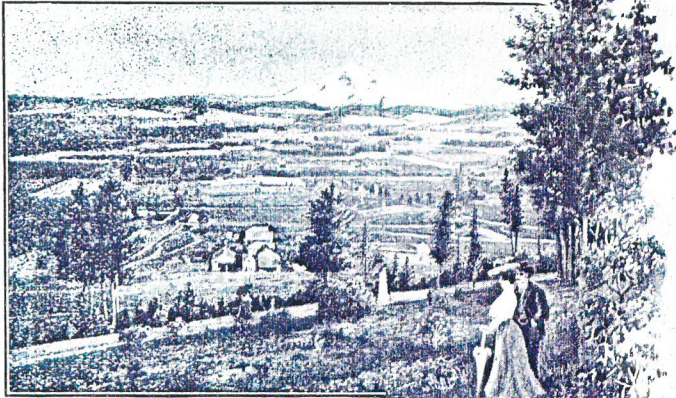


PORTLAND HARBOR

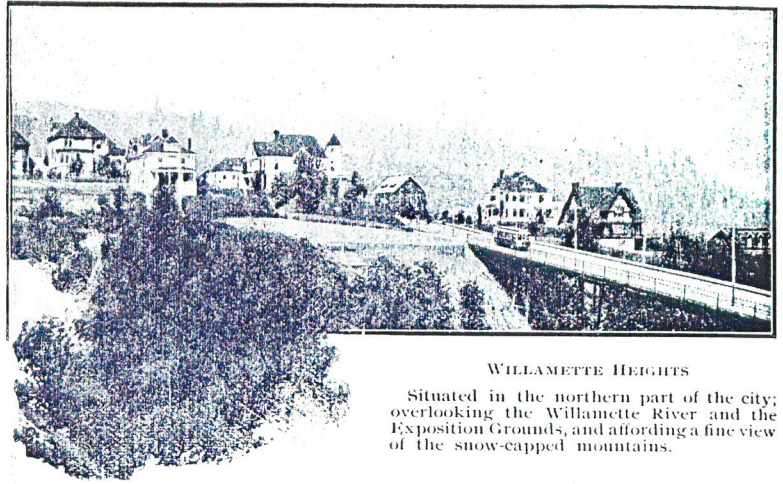


FIREBOAT "GEO. H. WILLIAMS"

OBSERVATION CARS

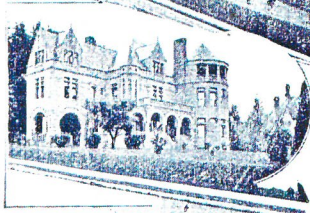
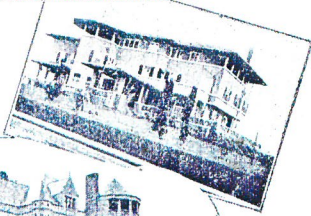
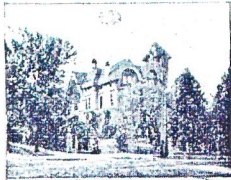


VIEW FROM MT. TABOR



WILLAMETTE HEIGHTS

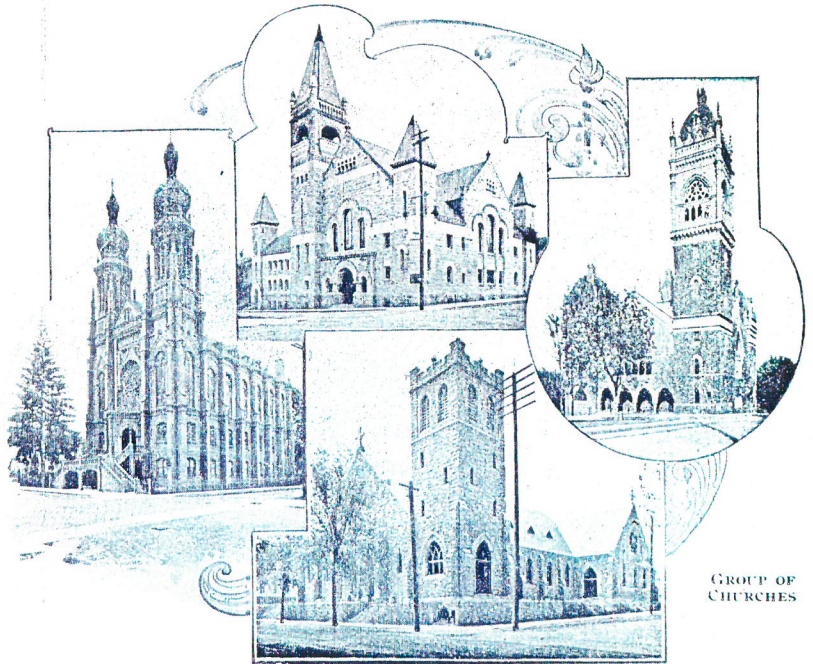
Situated in the northern part of the city; overlooking the Willamette River and the Exposition Grounds, and affording a fine view of the snow-capped mountains.



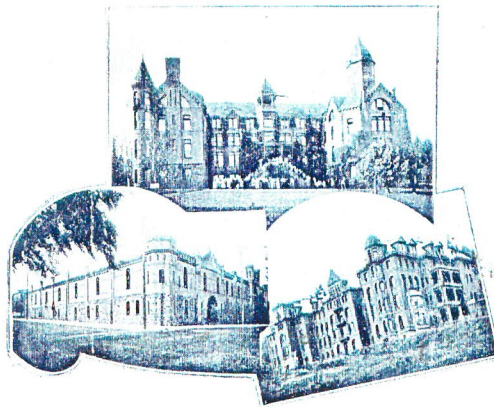
MODERN RESIDENCES



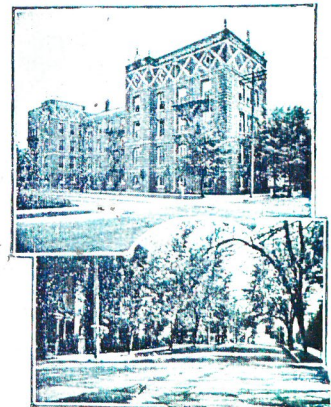
CHAMBER OF COMMERCE BUILDING



GROUP OF CHURCHES



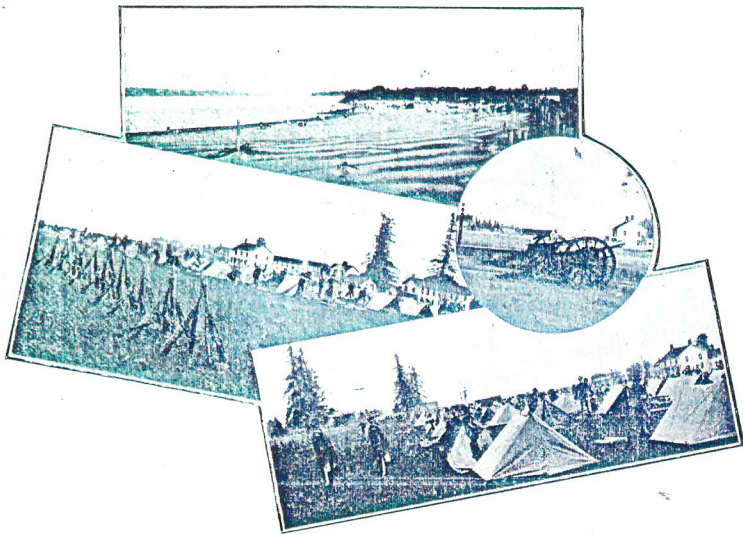
ST. HELEN'S HALL. ARMORY. ST. VINCENT'S HOSPITAL.



RS In order to view the City of Portland to best advantage Consolidated Ry. Co's. "Seeing Portland" is quick, economical, instructive and

ough the best residence and business Heights and the famous Portland ty to view the various manufacturing d its fleet of river steamers and large bridges along the Willamette River; s of worship, palatial residences and ic Library, City Hall, Court House, gs which adorn the city; and in addi- ear, marvelous and beautiful birds-eye s, the city and its environs, and also of

are pointed out and explained by the about two and one half hours and the



A Trip to Fort and City of Vancouver, Wash.

This is one of the most delightful suburban trips imaginable; a ride of seven miles to the banks of the Imperial Columbia River; passing en route a fine residence section, fruit and stock farms, Columbia Beach and the famous Columbia Slough fishing grounds, and also a trip of one mile on the Columbia by steam ferry-boat to one of the very earliest settlements on the original Oregon Territory.

VANCOUVER was first established in 1792 by Lieutenant Vancouver, a British explorer, becoming in 1806 a Hudson Bay trading post under the noted McLoughlin. On the 13th of May, 1849, Vancouver was founded as a post of the United States, and the Stars and Stripes floated to the breeze for the first time on the banks of the Columbia. It was then named Columbia Barracks, but in 1853 it was again designated Fort Vancouver. Here many of the men who have carved their names in the annals of our country, Grant, Sherman, Sheridan and others passed their apprenticeship in the art of war.

It is well worth the trip to view the broad esplanades and parade grounds, which are beautifully kept, and the soldiers barracks and officers quarters. Visitors are always allowed. The soldiers go through their routine drill every evening except Saturdays, Sundays and Holidays, at 5:00 o'clock, weather permitting.

The town of Vancouver is also very interesting and abounds in historical interest. Don't fail to see the famous tree "Balm of Gilead," which is the starting point of all surveys in the State of Washington.

Cars Leave Portland, Corner Second and Washington Streets, FOR Vancouver as follows:

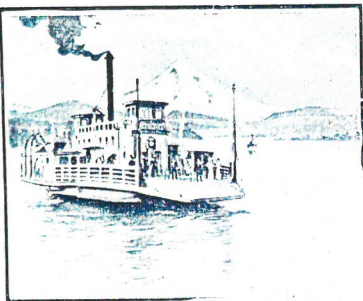
A. M.	*6.20	*7.00	7.40	8.20	9.00	9.40
	10.20	11.00	11.40			
P. M.	12.20	1.00	1.40	2.20	3.00	
	3.40	4.20	5.00	5.40	6.20	
	7.00	7.40	9.00	†10.30		
				†11.30		

Ferry Leaves Vancouver to Connect With Cars FOR Portland as follows:

A. M.	*6.10	*7.20	8.00	8.40	9.20
	10.00	10.40	11.20	12.00	M
P. M.	12.40	1.20	2.00	2.40	3.20
	4.00	4.40	5.20	6.00	6.40
	7.20	8.00	9.30	†11.00	

and †12.00 midnight connecting with car to Woodlawn only.

On third Monday in each month last car from Portland leaves at 7:00 p. m., and last ferry-boat leaves Vancouver for Portland at 7:20 p. m.



One hour and forty minutes run for round trip.
Round trip ticket 45 cents.

*Daily except Sundays. †Daily except Mondays. P. M. Black Figures.

PORTLAND CONSOLIDATED RAILWAY CO.'S

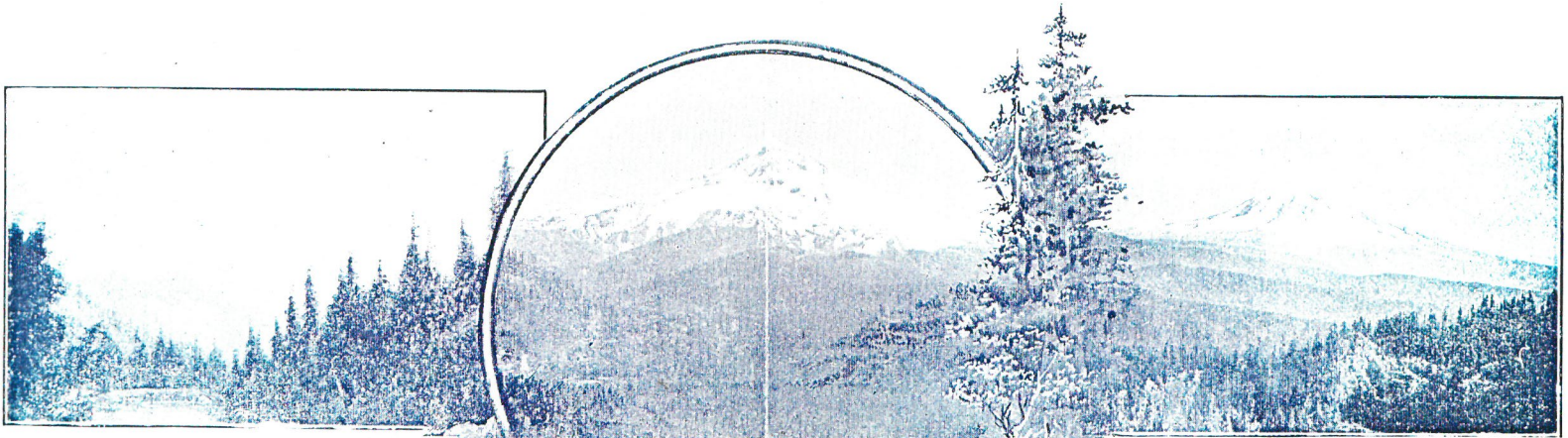
"Seeing Portland" Observation Cars



CAR STARTS DAILY FROM THIRD AND ALDER STREETS

10:00 A. M., 2:00 P. M.
2:30 P. M.

FARE 50 CENTS



ELEVATION OF MOUNTAIN PEAKS
AND THEIR DISTANCES
FROM PORTLAND

	Elevation Feet	Distance, Miles
Mount Hood	11,225	50.1
Mount Rainier.....	14,256	112.8
Mount St. Helens.	10,000	53.0
Mount Adams.....	12,470	75.0
Mount Jefferson...	10,200	60.2

Portland Heights—800 feet High

This is the most famous street car ride in America. These heights command a scenic prospect that is unrivaled, embracing a most wonderful view of lakes, islands, rivers, fertile valleys and virgin forests, high mountains and grand snow-capped peaks.

Take Portland Heights car on Washington Street. Transfer to and from any regular car.

PORTLAND

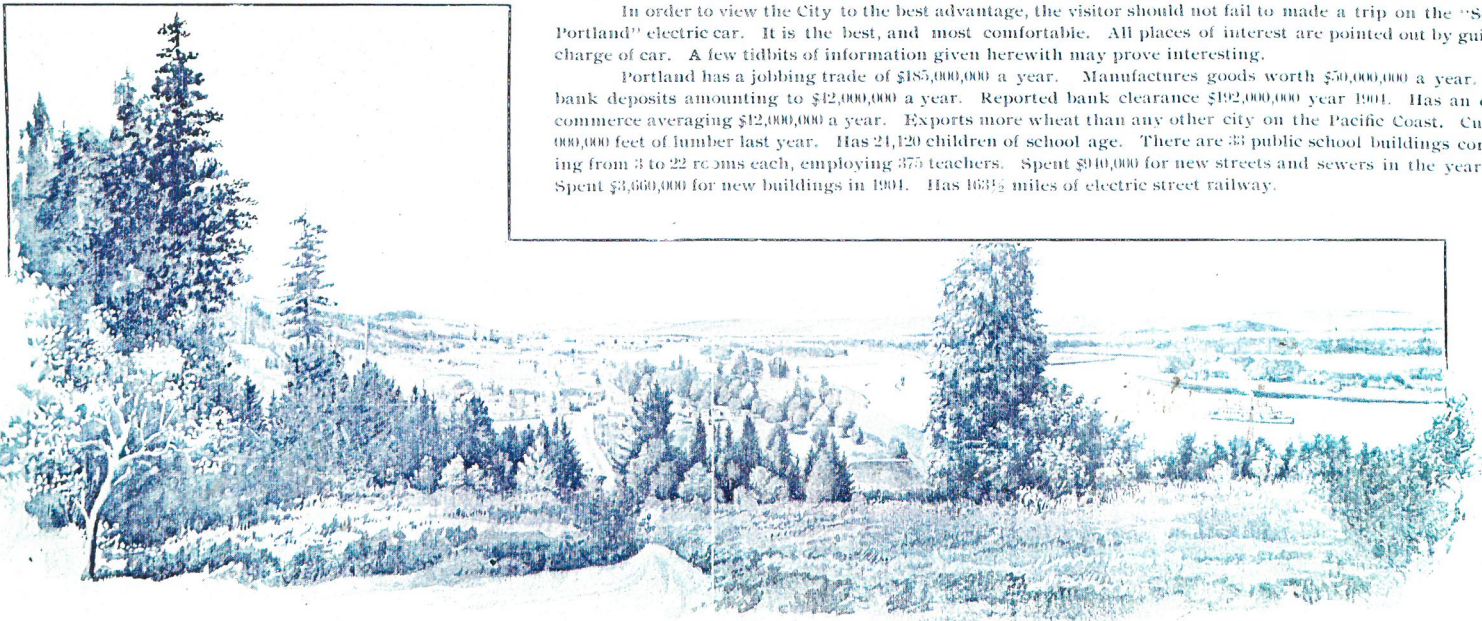
Is the principal city of the Northwest and has a population of 140,000. It is situated on the Willamette River, ten miles from that rivers' confluence with the Columbia, and 110 miles from the Pacific Ocean. It was founded in 1813 by the pioneers, Pettygrove and Lovejoy, and from the date of its birth has had a remarkable unchecked growth. The city is highly favored in location, being protected from winter storms by a range of high hills which skirts its western edge, while the summer heat is tempered by the cool breezes of the Pacific. Its climate is very pleasant, the temperature in winter hardly ever reaches freezing point, while in the summer it averages about seventy-five degrees. Roses and other flowers bloom practically all the year round.

Portland is considered one of the healthiest cities in the Union, its death rate in 1904 being 9.5 per thousand of its population. One of the main factors in its healthfulness being the fact that it is supplied with the purest drinking water of any in the land, its water supply being piped from the base of Mount Hood, a distance of fifty miles. The City holds commercial intercourse with the whole world. Hundreds of vessels of all Nations, ranging in tonnage from 500 to 5,000, are annually loaded at the port. It is besides the terminal of the Northern Pacific, Union Pacific and Southern Pacific Railroads. The chief export commodities are lumber, flour and grain.

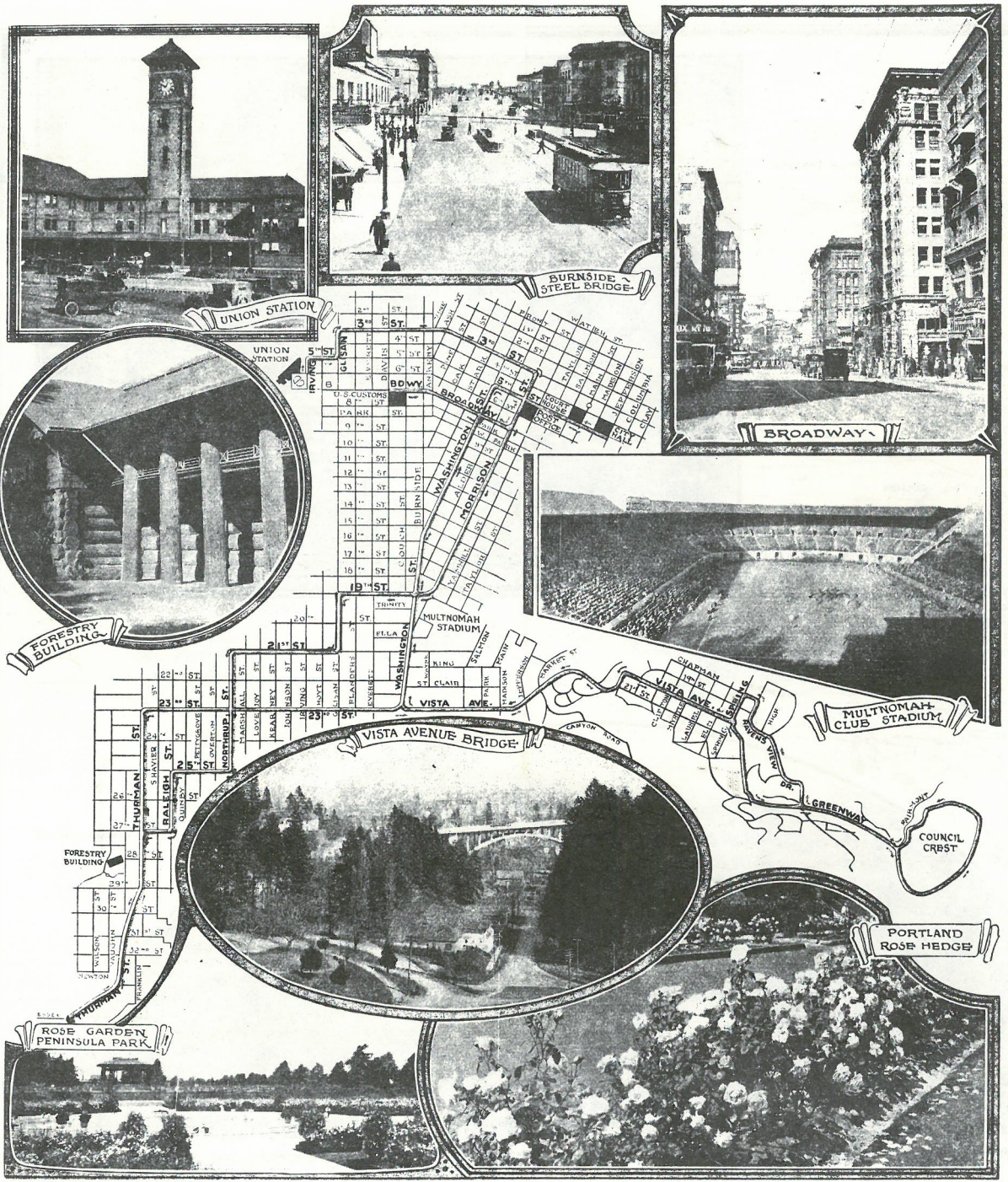
Portland has every social, educational and religious advantage which a modern city naturally enjoys. The public school system of Portland is one of the best and most complete in America.

In order to view the City to the best advantage, the visitor should not fail to make a trip on the "Seeing Portland" electric car. It is the best, and most comfortable. All places of interest are pointed out by guide in charge of car. A few tidbits of information given herewith may prove interesting.

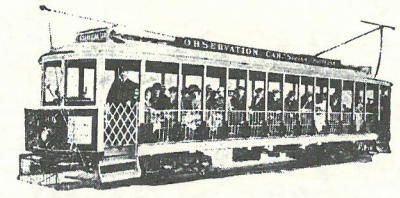
Portland has a jobbing trade of \$185,000,000 a year. Manufactures goods worth \$50,000,000 a year. Has bank deposits amounting to \$12,000,000 a year. Reported bank clearance \$192,000,000 year 1904. Has an ocean commerce averaging \$12,000,000 a year. Exports more wheat than any other city on the Pacific Coast. Cut 413,000,000 feet of lumber last year. Has 21,120 children of school age. There are 33 public school buildings containing from 3 to 22 rooms each, employing 375 teachers. Spent \$910,000 for new streets and sewers in the year 1904. Spent \$3,660,000 for new buildings in 1904. Has 163½ miles of electric street railway.



RIVERVIEW ROAD AND CEMETERY.



Seeing Portland



Trolley Observation Trip
Through West Side Business and
Residence Districts

A TWO HOUR RIDE
IN A CAR ESPECIALLY DESIGNED FOR
THE TRIP WITH COMPETENT
CONDUCTOR IN CHARGE

Only 50 cents

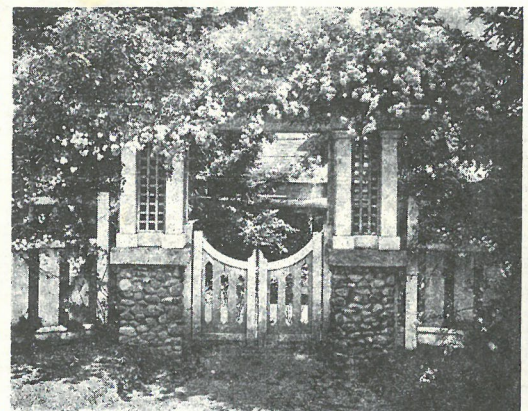
HISTORICAL, EDUCATIONAL, INSPIRING

INCLUDES
Willamette Heights
Forestry Building
Portland Heights, and
Council Crest
Elevation 1065 feet
Unobstructed View to all Points of the Compass

A tour of the Northwest is not
complete without a visit to
Council Crest

OBSERVATION CAR
SEASON JUNE TO OCTOBER
Leaves Union Depot - 9:45 A.M. 2:00 P.M.
Stops made at all street intersections and Hotels
on route
Subject to change without notice

Seeing Portland OREGON by Trolley



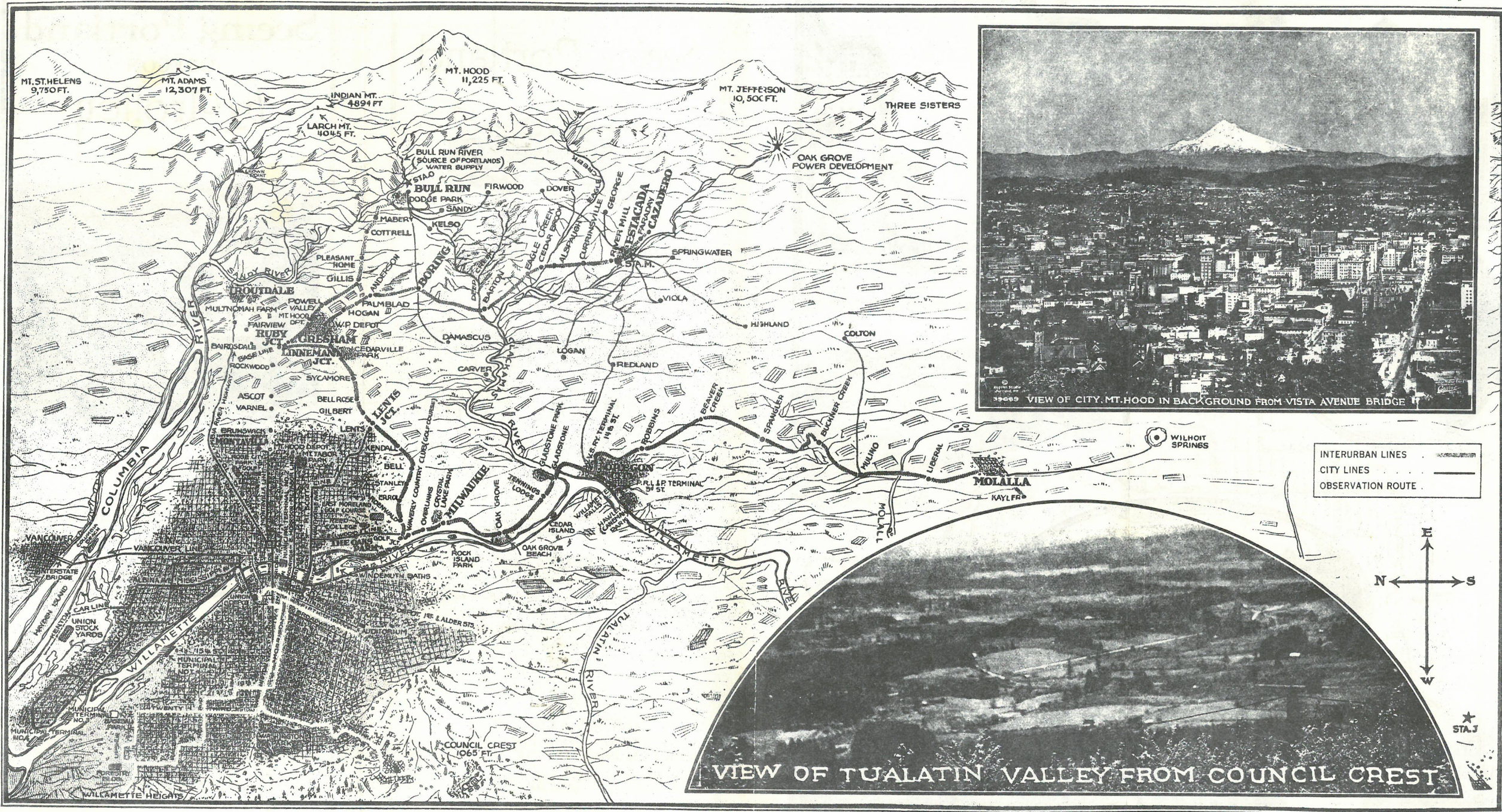
A Rose Gateway in Portland

Seeing Portland

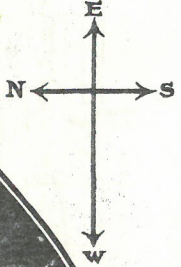
Viewed best from
Trolley Observation Car
Designed Especially for this Trip

PORTLAND ELECTRIC POWER CO.
Electric Building, Portland, Oregon
Telephone Atwater 5161





INTERURBAN LINES ————
 CITY LINES ————
 OBSERVATION ROUTE ————



★ STA. J

VIEW OF TUALATIN VALLEY FROM COUNCIL CREST