

# **Portland Plan Planning Commission Hearing**

**March 9, 2010**

**1:15 p.m.**

**1900 SW 4<sup>th</sup> Ave., Room 2500A**



# **Periodic Review: Land Supply, Assumptions and Maps**

**March 9, 2010**

**1:15 p.m.**

**1900 SW 4<sup>th</sup> Ave., Room 2500A**



# The Portland Plan



# The Portland Plan: Spring 2010 Hearings

*January 26*

*Overview of Background Reports*

**February 9**

**Periodic Review: What is it?**

**How does it relate to the Background Reports?**

**March 9**

**Land Supply Assumptions and Maps**

*future hearings tbd...*



# NINE ACTION AREAS



**Prosperity, Business Success & Equity**

**Education & Skill Development**

**Arts, Culture & Innovation**

**Sustainability & the Natural Environment**

**Human Health, Food & Public Safety**

**Quality of Life & Civic Engagement**

**Design, Planning & Public Spaces**

**Neighborhoods & Housing**

**Transportation, Technology & Access**



# **THE PORTLAND PLAN WILL BE OUR STRATEGIC PLAN FOR THE NEXT 25 YEARS**

**City of Portland | Metro | Multnomah County  
Portland State University | Oregon Health & Science University  
Portland Public Schools | Parkrose School District  
Centennial School District | David Douglas School District  
Reynolds School District | Worksystems, Inc.  
Portland Community College | TriMet | ODOT  
Mt Hood Community College | University of Oregon  
Portland Development Commission | Housing Authority of Portland  
East Multnomah Soil & Water Conservation District  
West Multnomah Soil & Water Conservation District  
Multnomah County Drainage District No. 1**



# Background Reports

- Snapshots
- Overviews
- Full Reports



[Food Systems \(PDF\)](#)

[Food Systems - Overview \(PDF\)](#)

[Food Systems Maps \(PDF\)](#)

What do you think of the Food Systems background report? [Submit your feedback.](#)



[Human Health and Safety \(PDF\)](#)

[Human Health and Safety - Overview \(PDF\)](#)

What do you think of the Human Health and Safety background report? [Submit your feedback.](#)



[Historic Resources \(PDF\)](#)-  
Report 1: Key Findings and Recommendations

[Historic Resources \(PDF\)](#)-  
Report 2: Data and Maps

[Historic Resources \(PDF\)](#)-  
Report 3: Understanding Historic Resources in Portland

[Historic Resources - Overview \(PDF\)](#)

What do you think of the Historic Resources background reports? [Submit your feedback.](#)



# What is Periodic Review?

- **1981 – Legislature requires periodic review of all Comprehensive Plans**
- **2005 – Legislature narrows scope of periodic review to include only:**
  - Economic Development;
  - Needed Housing;
  - Public Facilities;
  - Transportation; and
  - Urbanization





# Housing Forecasts: Implications for Portland

- **Forecast 105,000 - 136,000 new households by 2035 (1.2 to 1.6% annual growth).**
  - 3,500-4,500 units needed per year
  - For reference - 29,300 units built between 1997 and 2007
- **Employment Forecasts:**
  - 113,000 - 202,000



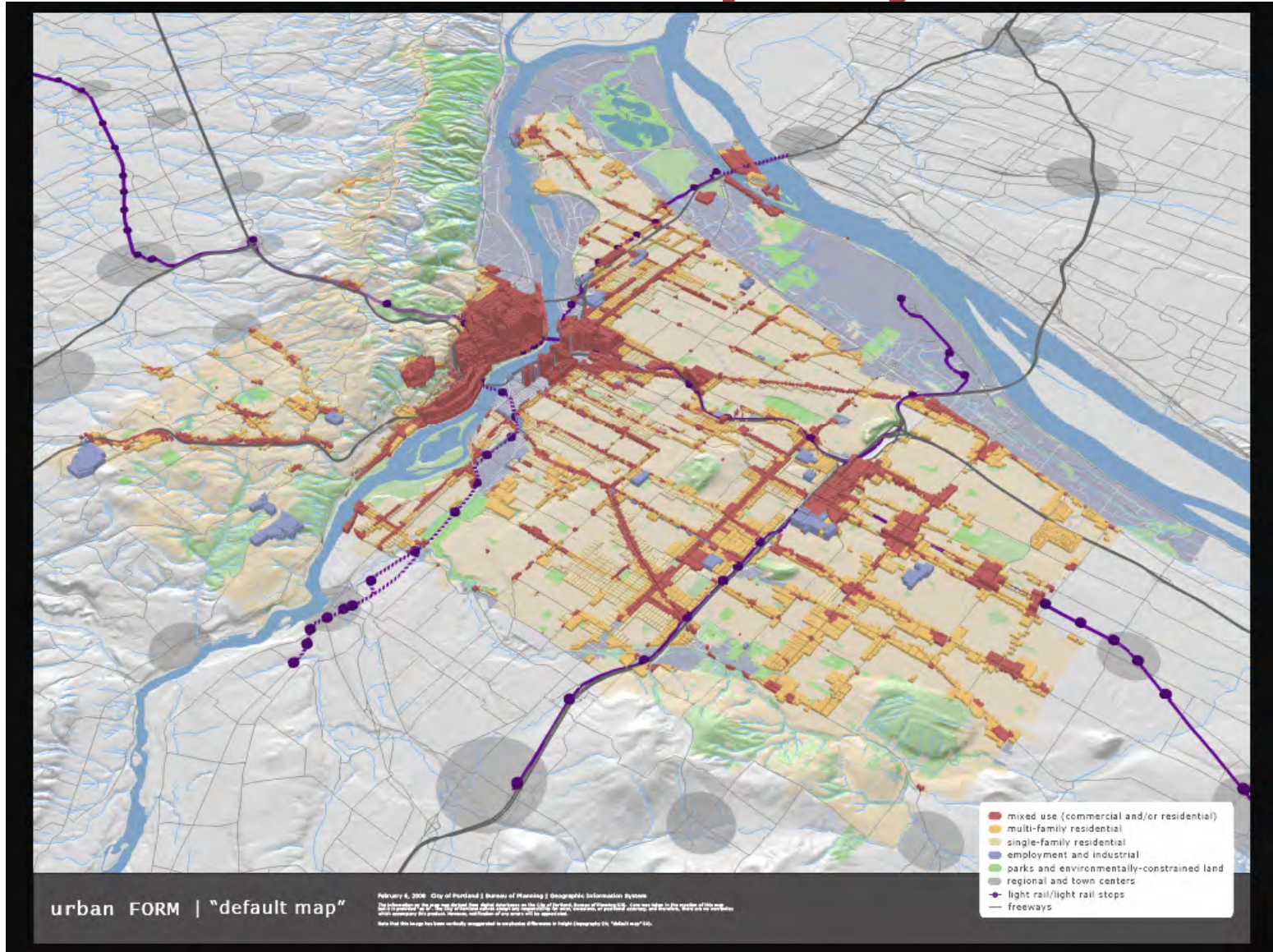
# Buildable Lands Capacity Calculations

- Step 1 = Verify zoned capacity
- Step 2 = State assumptions about likely capacity (market factors, ripeness for redevelopment, refill rate)
- Step 3 = Subtract constraint layers (infrastructure, hazards, sensitive lands, etc.)
- Step 4 = Examine default scenario (carry current policy forward to 2035)
- Step 5 = Examine other possible scenarios

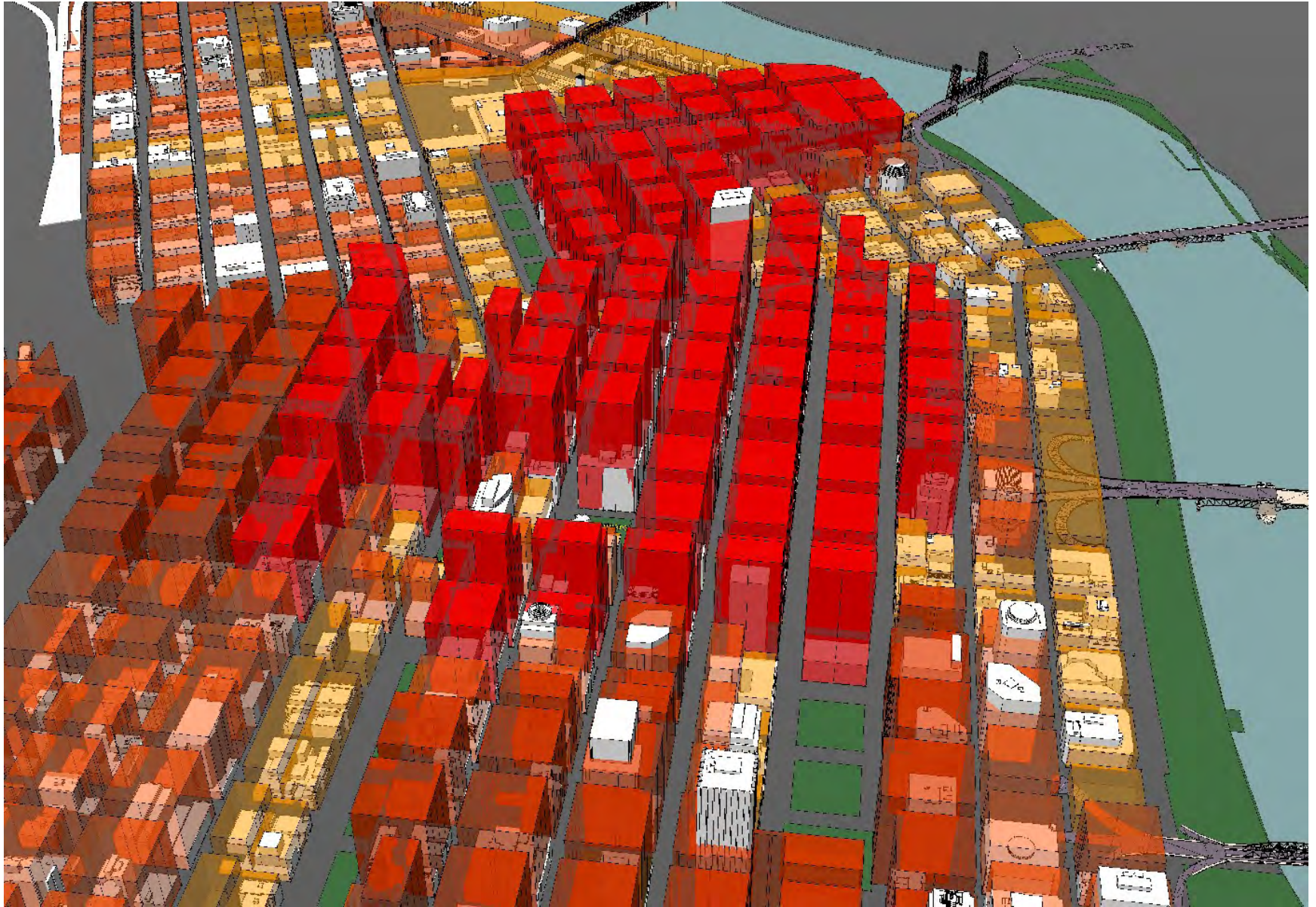
Result = find preferred scenario that has capacity to absorb forecast growth



# Zoned Capacity



# Zoned Capacity (Example)



# Likely Capacity (Example)

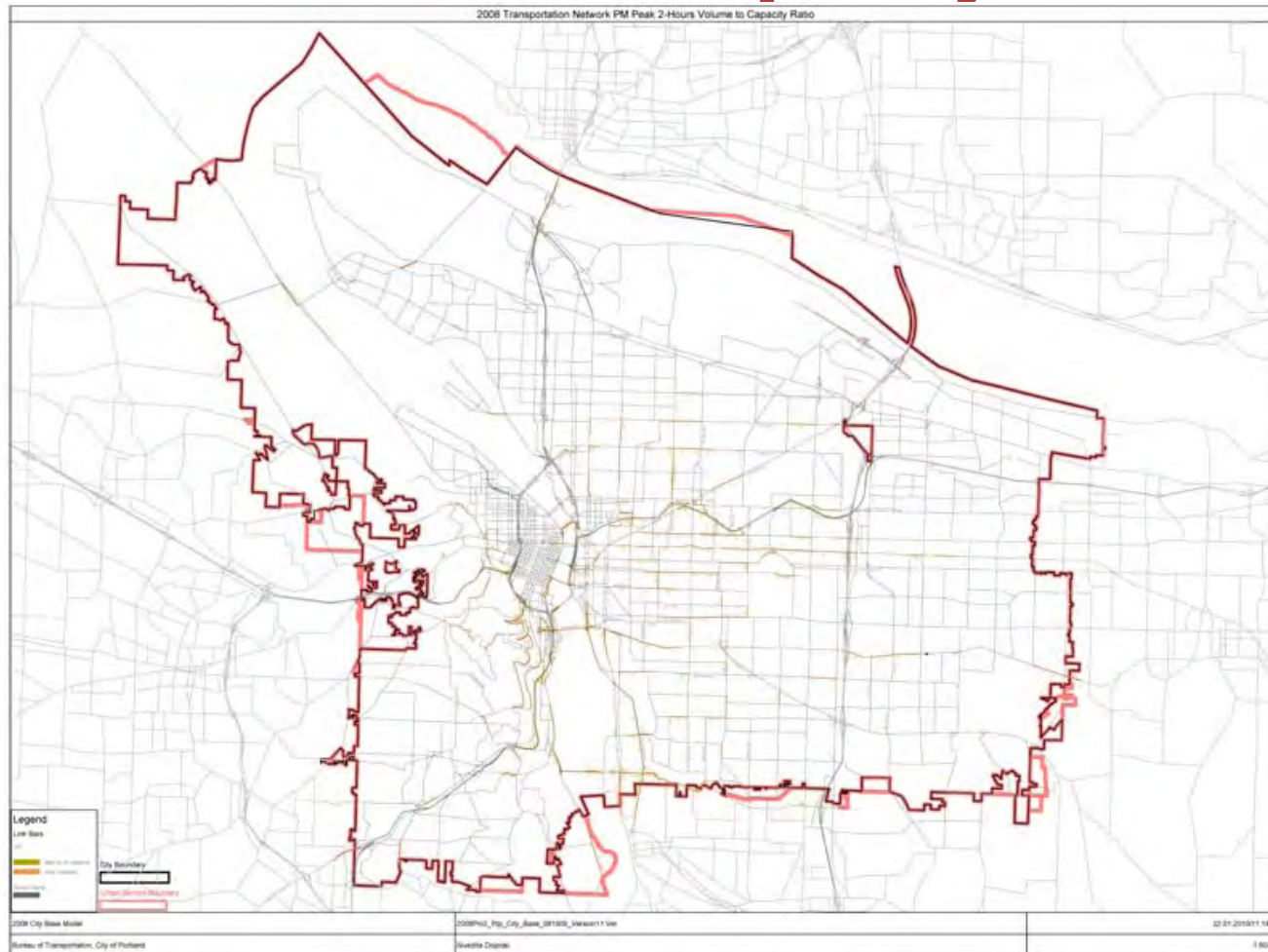


# Buildable Lands Inventory (BLI): Maps

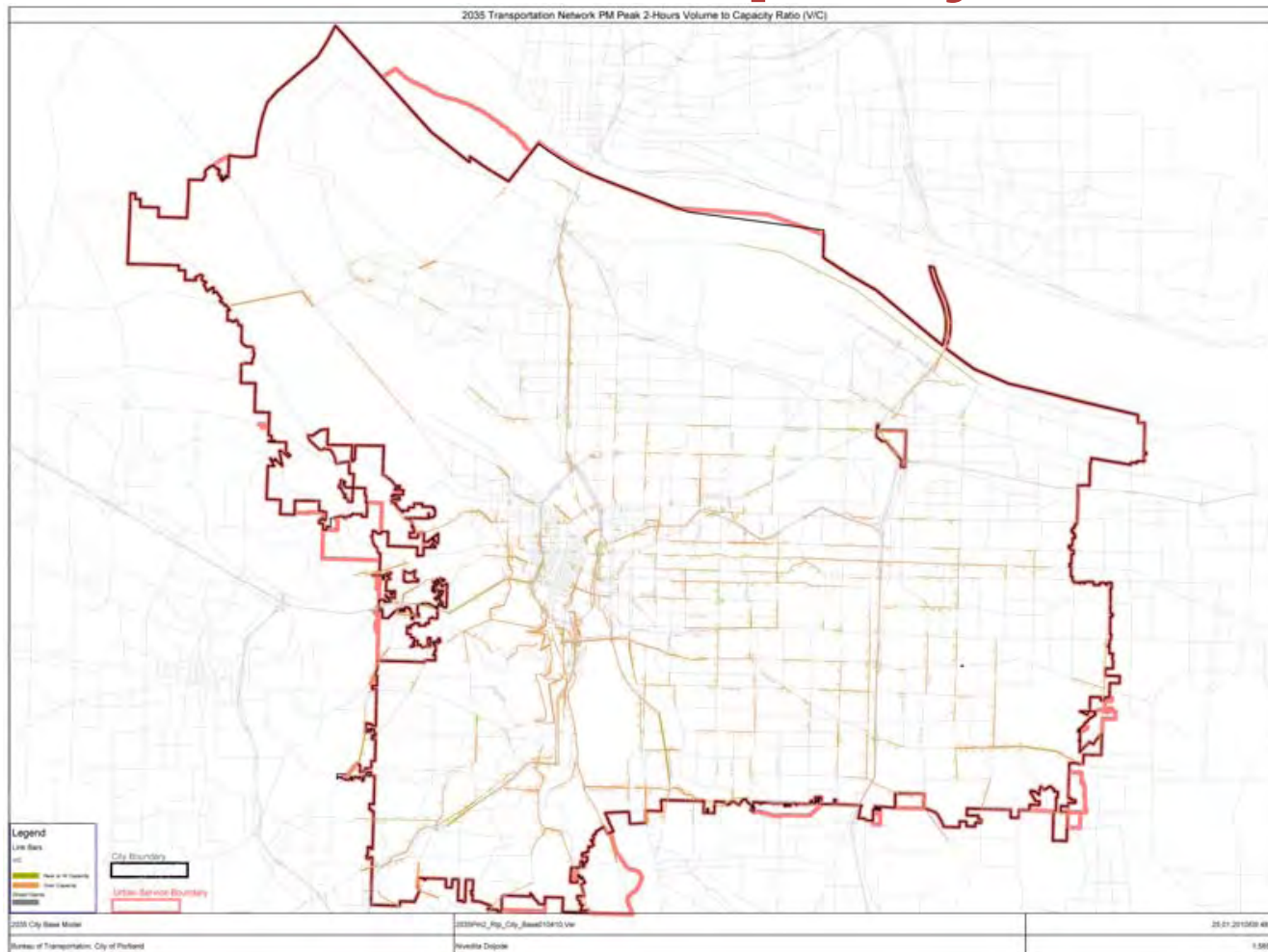
Transportation Services and Capacity (2 maps)	(some)
Water Services and Capacity	(some)
Sewer Services and Capacity (5 maps)	(some)
<i>Drainage Conveyance/Infiltration Capacity</i>	<i>(some)</i>
Building Height/Use Limits near PDX & Heliport	(some)
Natural Resource Features	(some)
Natural Resource Inventory	(some)
Significant Scenic Areas Inventory	(none)
Open Space	(some)
Delineated Wellhead Protection Areas	(none)
Significant Cultural Resources	(some)
Hazards	(some)
Publicly Owned Land	(some)
Rural Lands	(full)
Underserved Parks Areas	(none)



# 2008 Transportation Network PM Peak 2 Hours Volume to Capacity Ratio

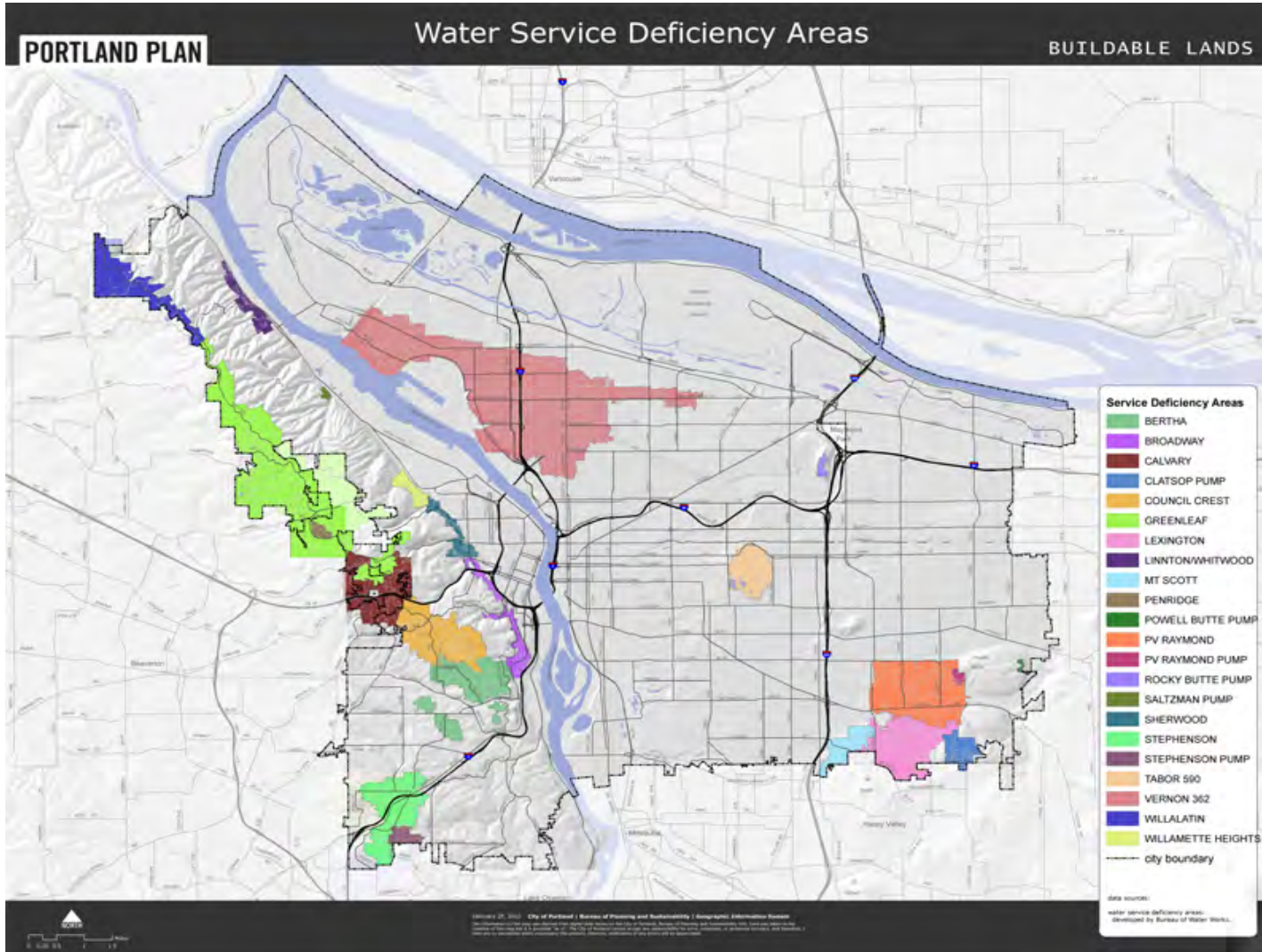


# 2035 Transportation Network PM Peak 2 Hours Volume to Capacity Ratio

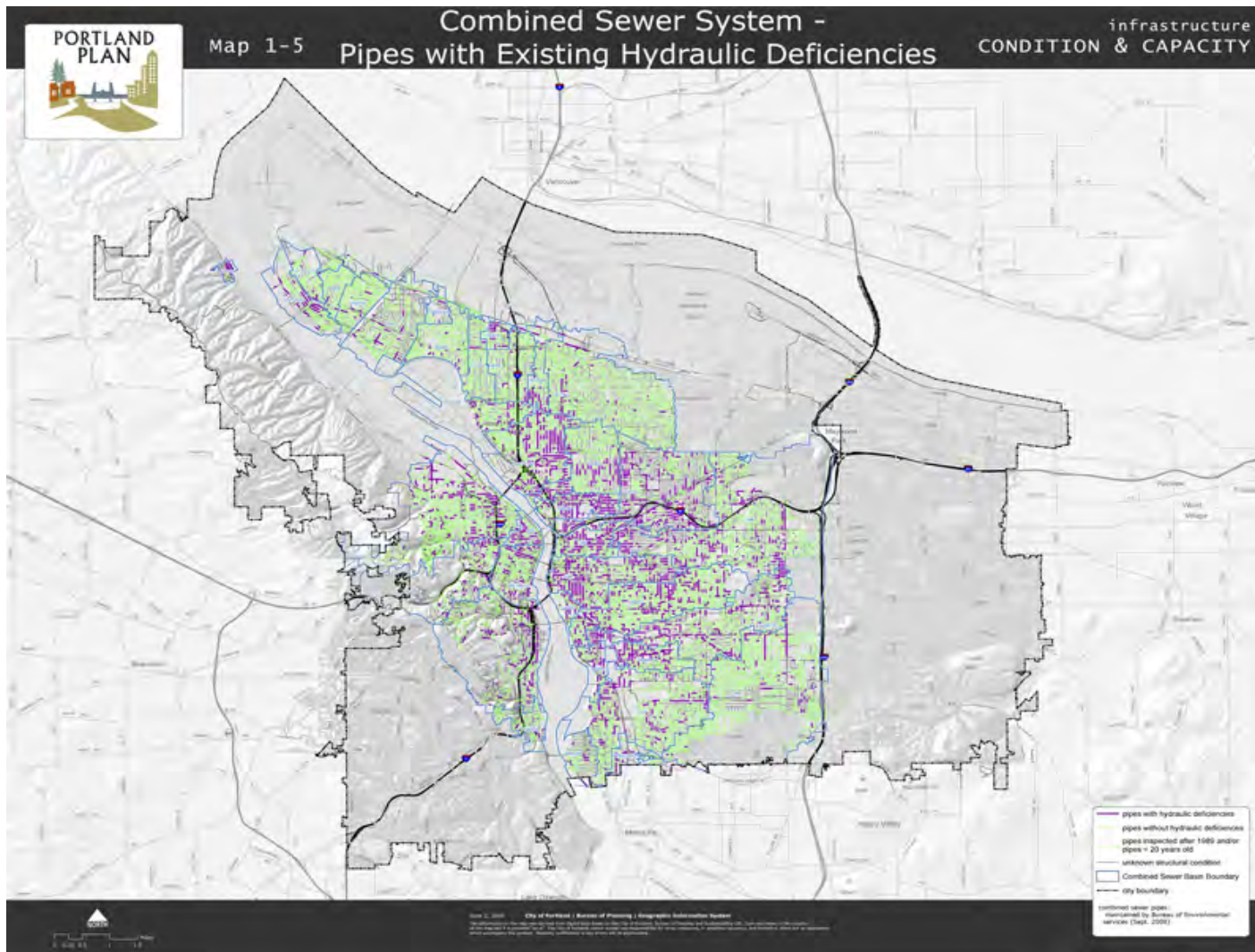




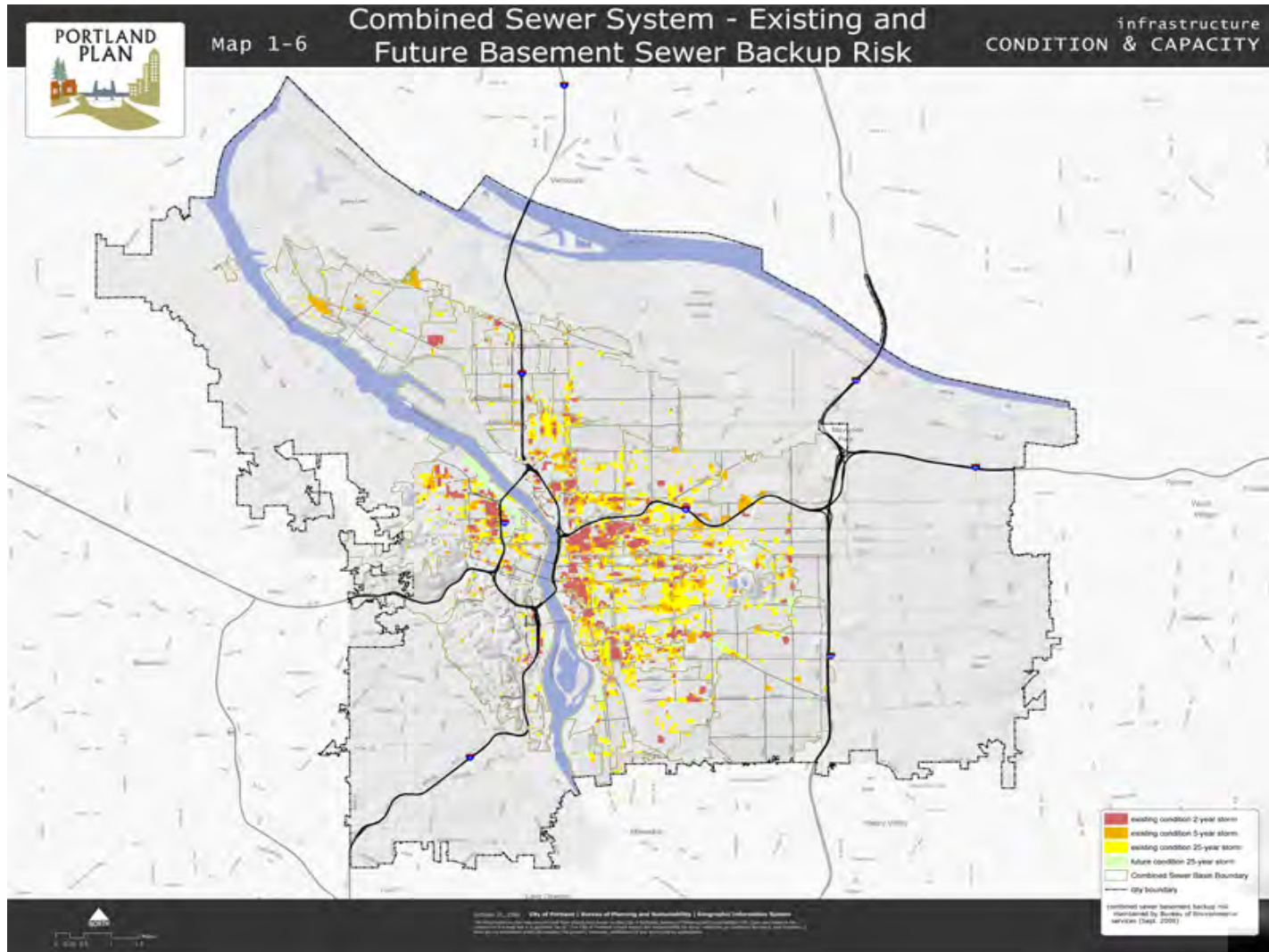
# Water System Deficiency Areas



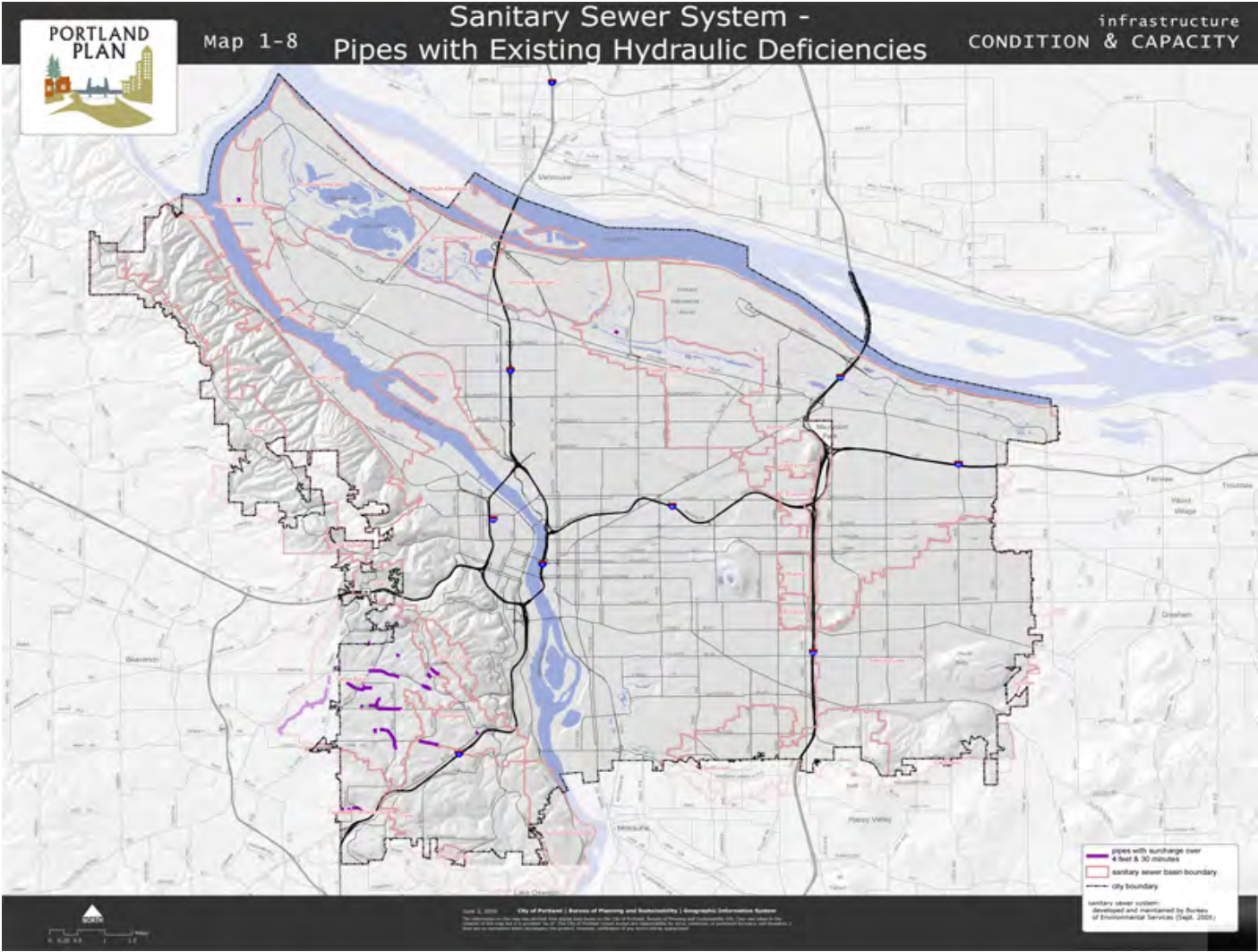
# Combined Sewer Hydraulic Deficiencies



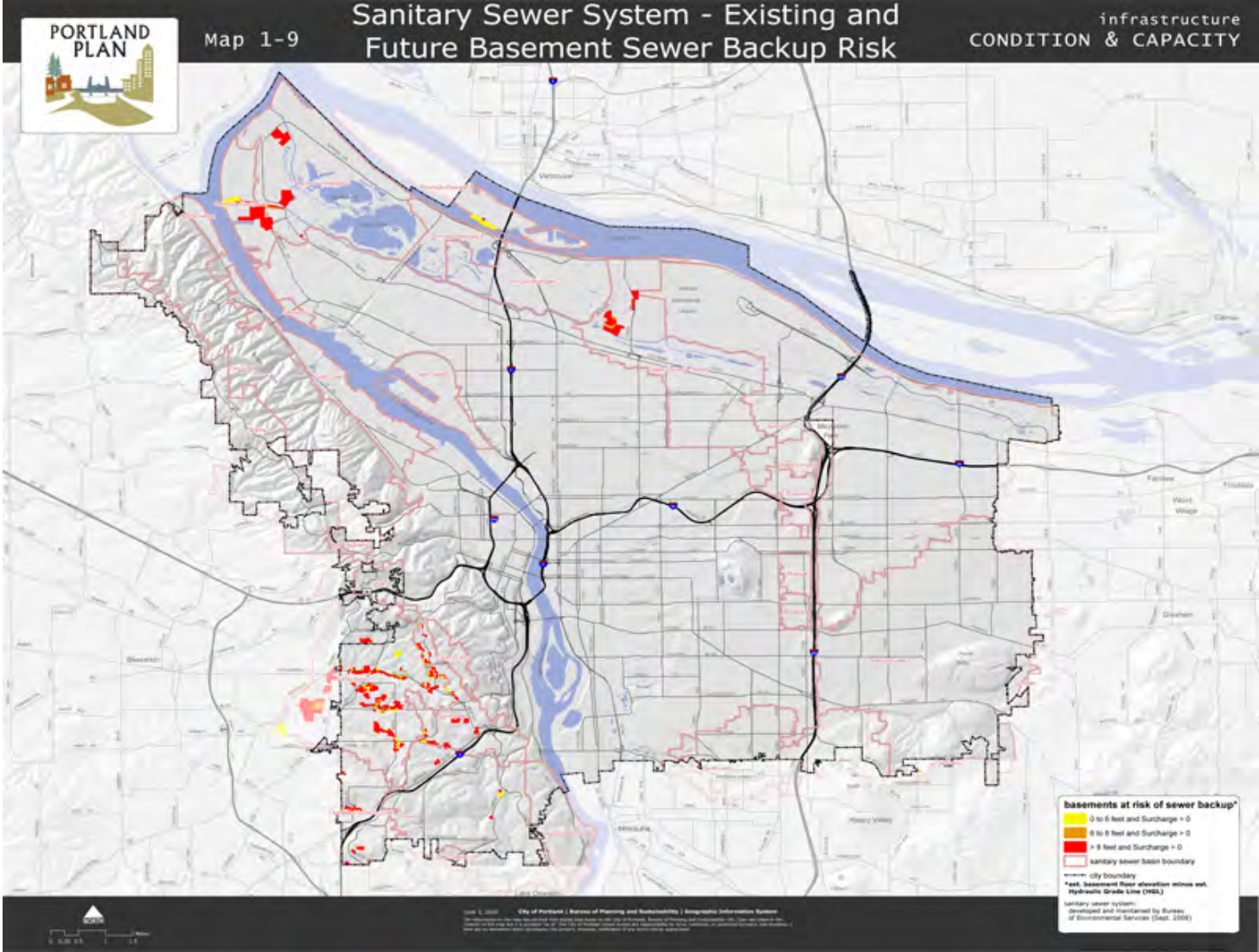
# Combined Sewer Basement Backup Risk



# Sanitary System Hydraulic Deficiencies



# Sanitary System Basement Backup Risk



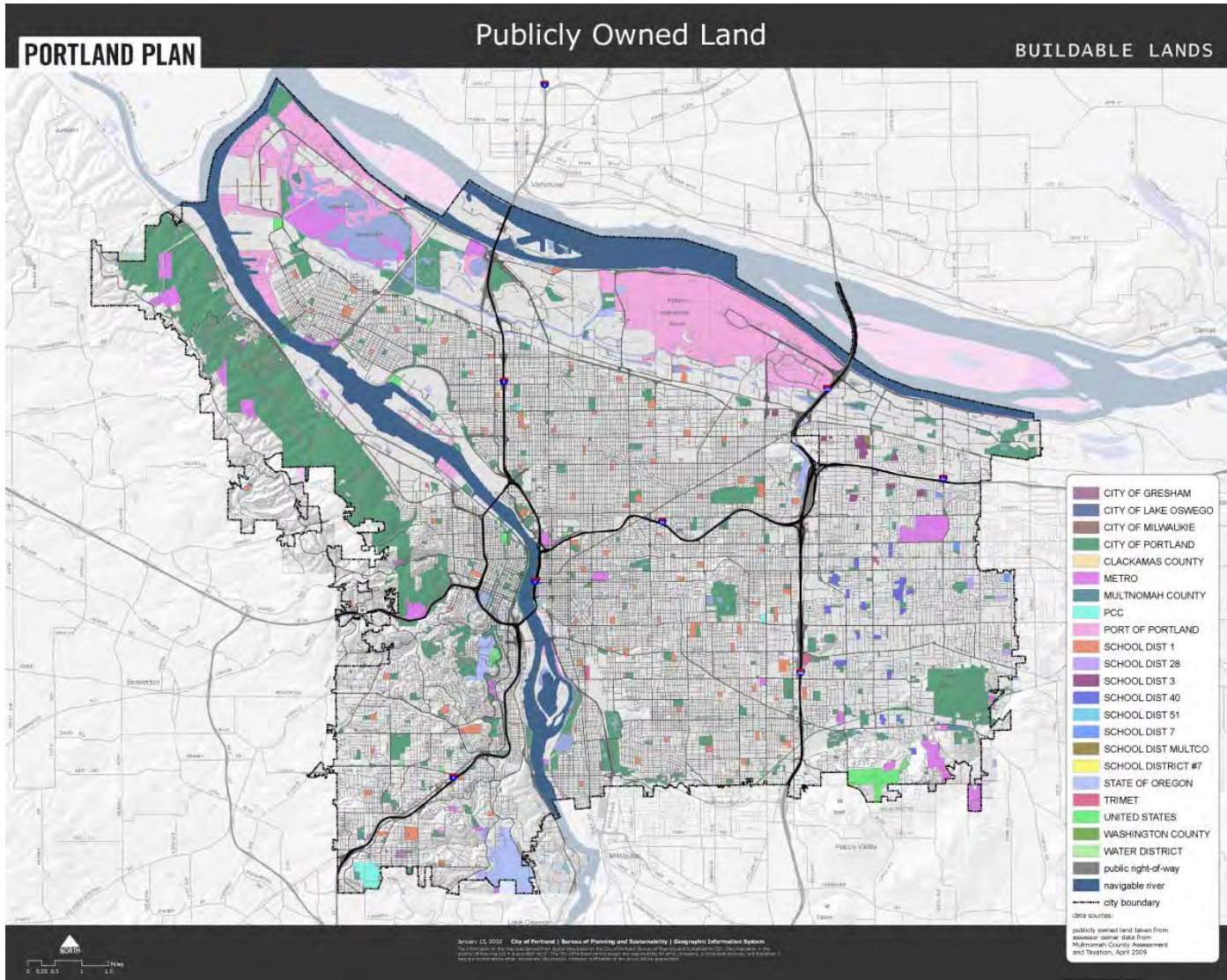
# Drainage Conveyance/Infiltration Capacity

Map Not Yet Available

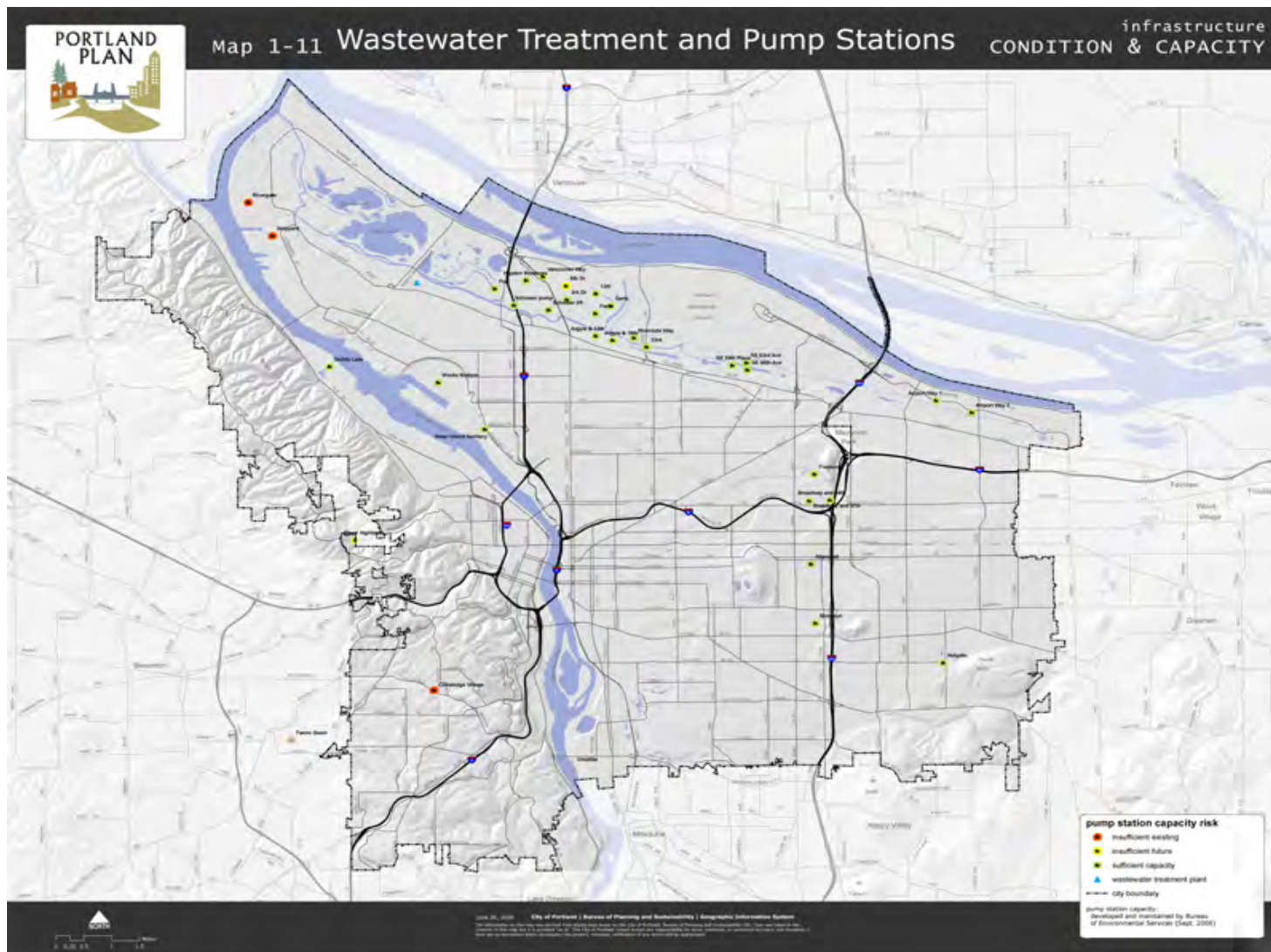
- **Soils: Poor infiltration**
- **Shallow Groundwater**
- **Sensitive Streams**



# Publicly Owned Lands

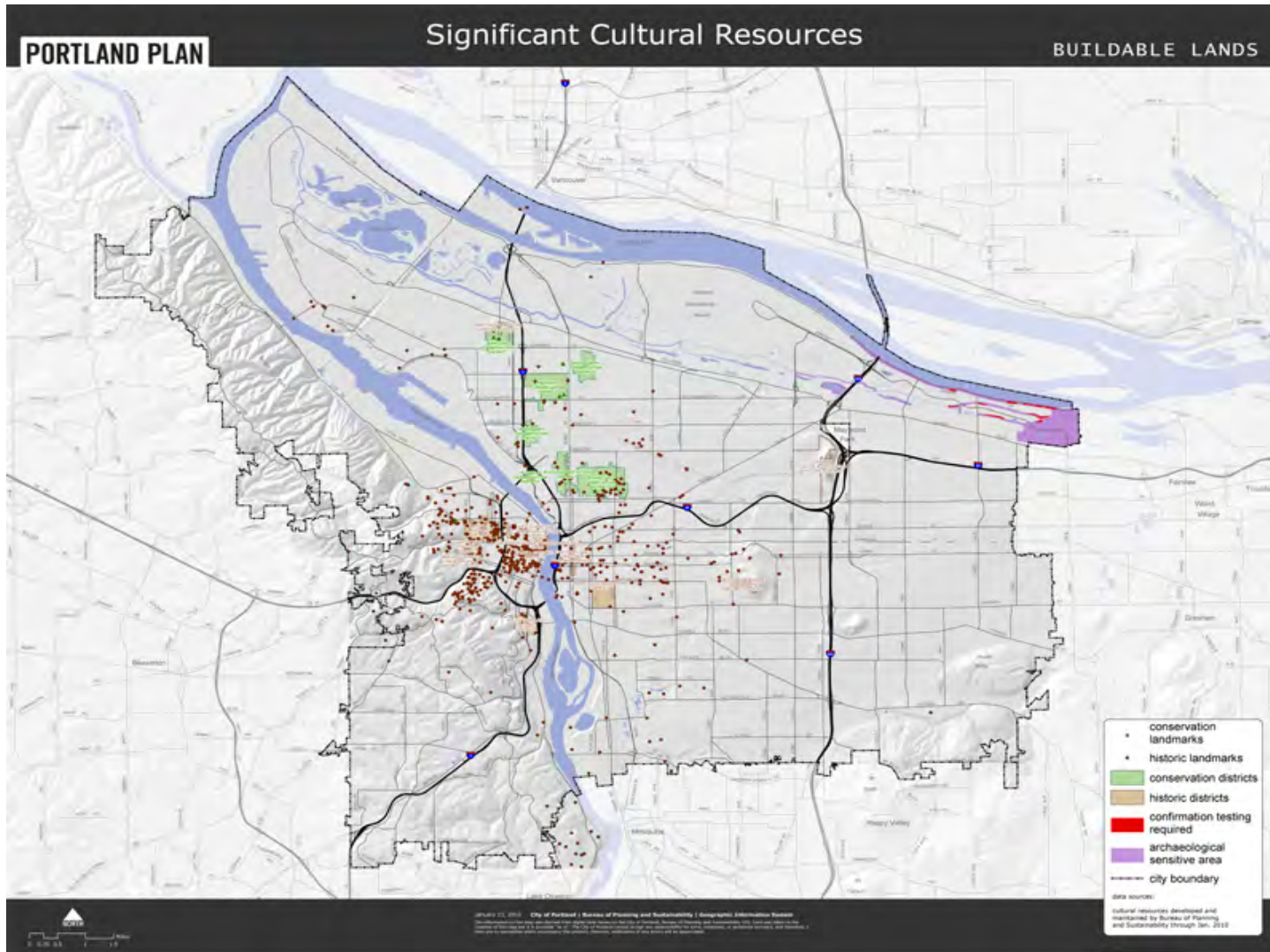


# Wastewater Treatment & Pump Stations

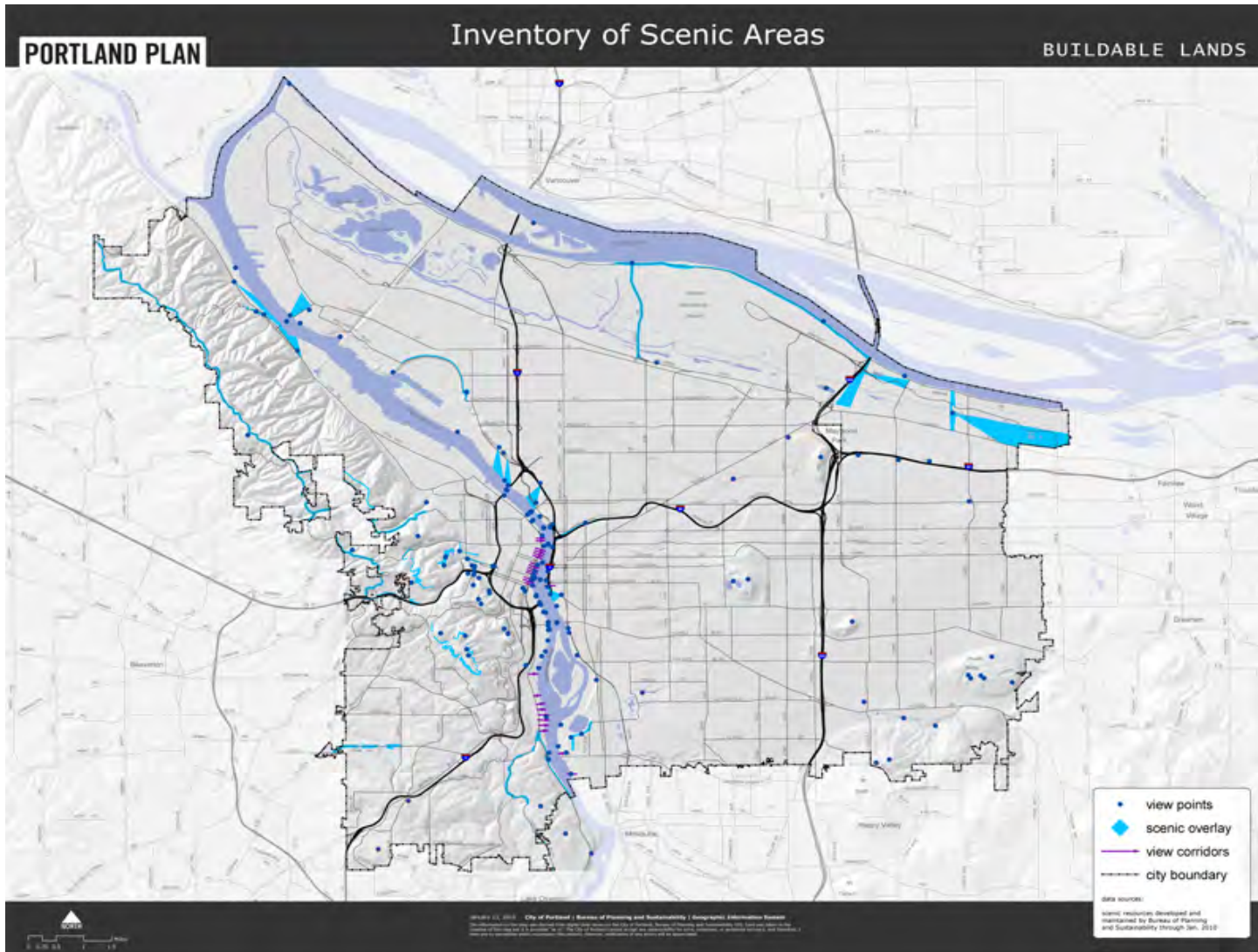




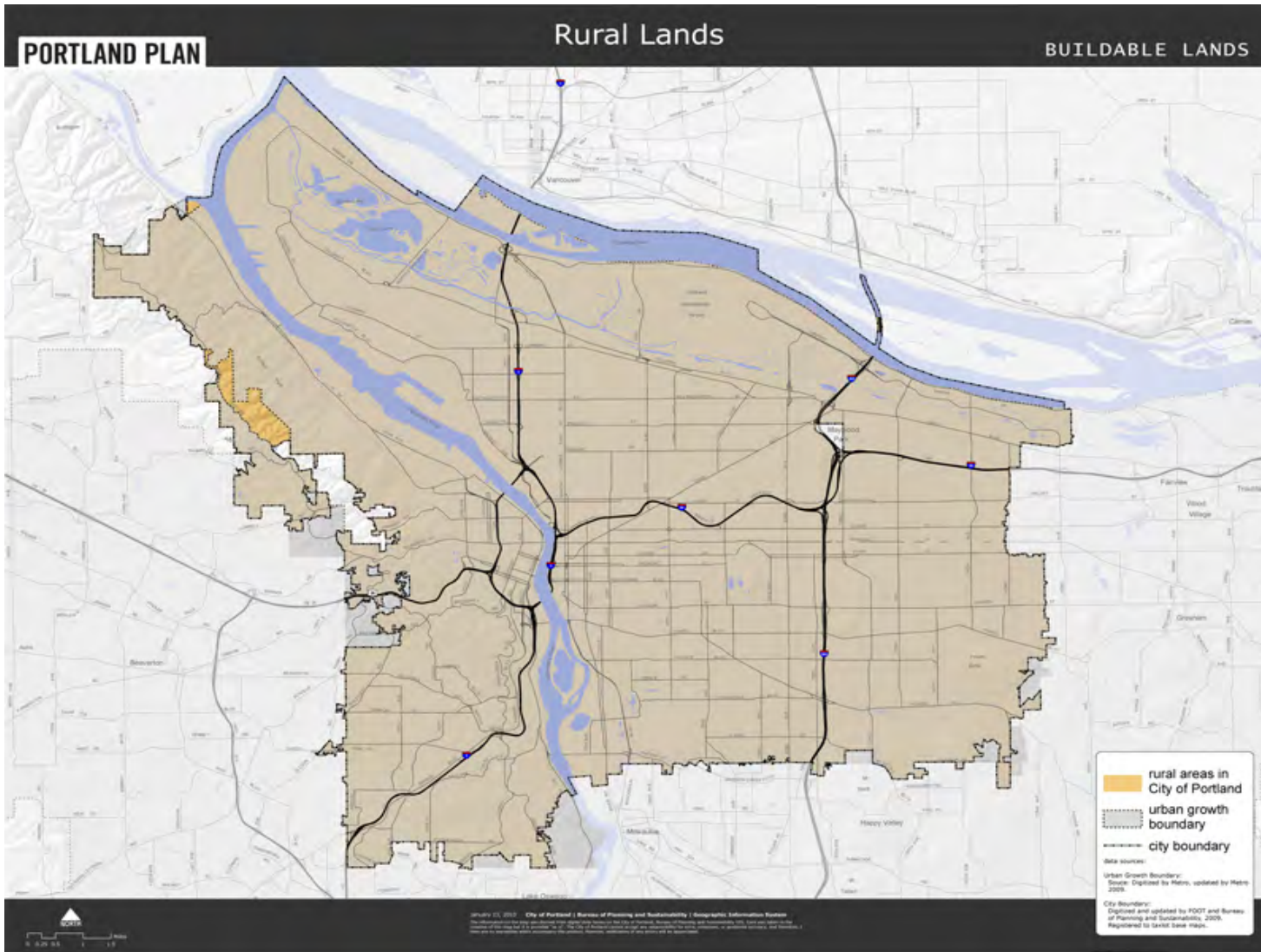
# Significant Cultural Resources



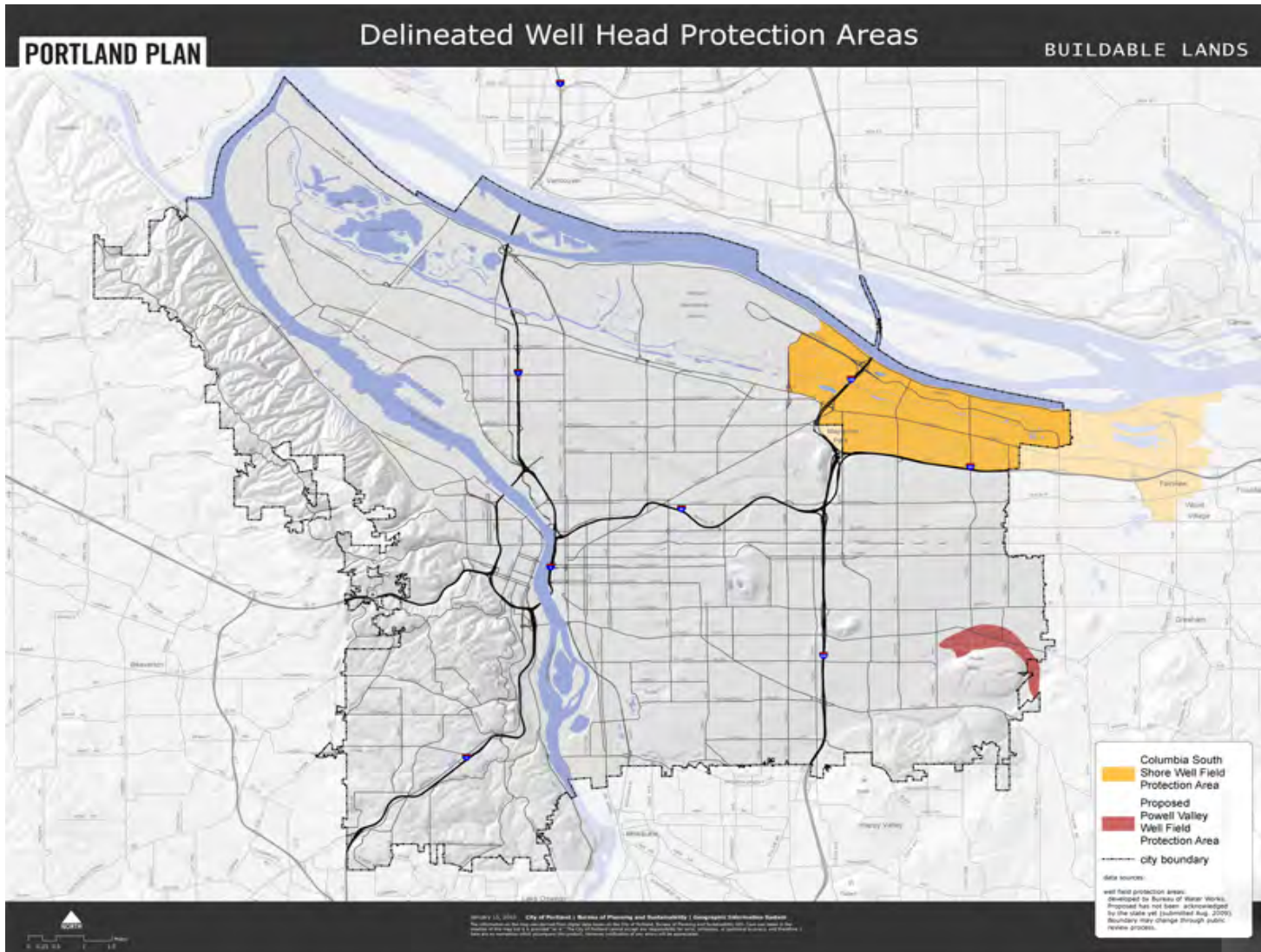
# Inventory of Scenic Areas



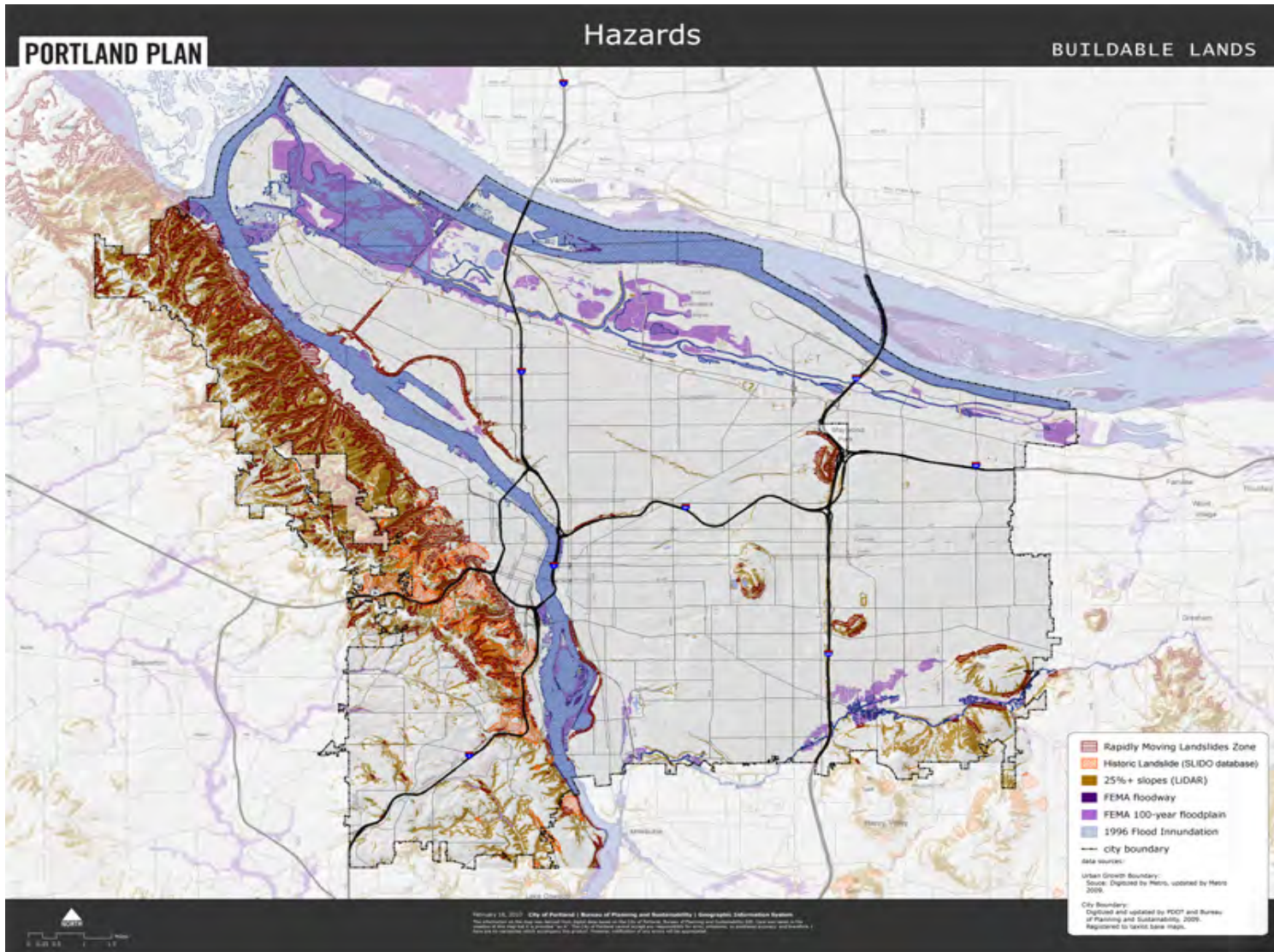
# Rural Lands



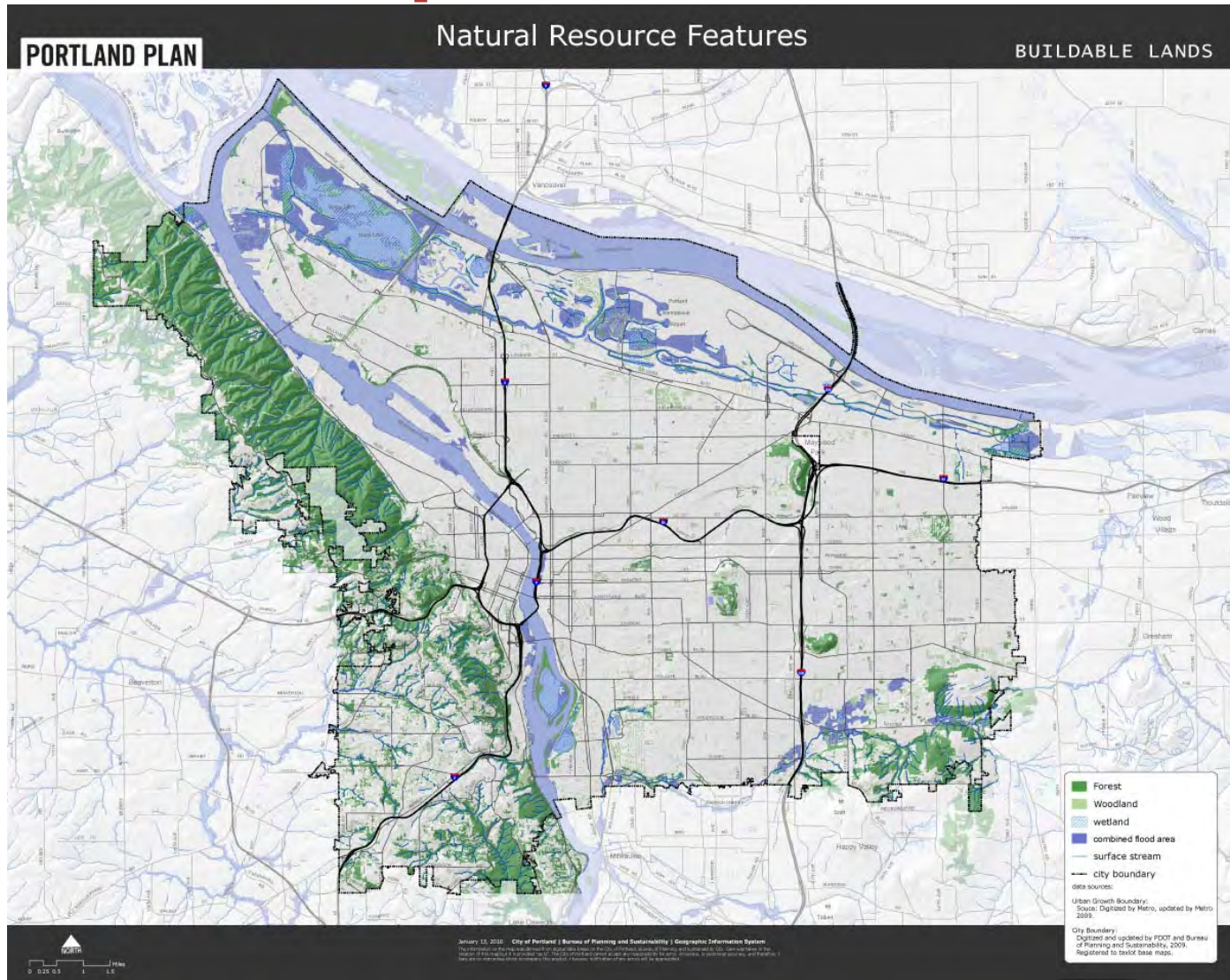
# Delineated Wellhead Protection Areas



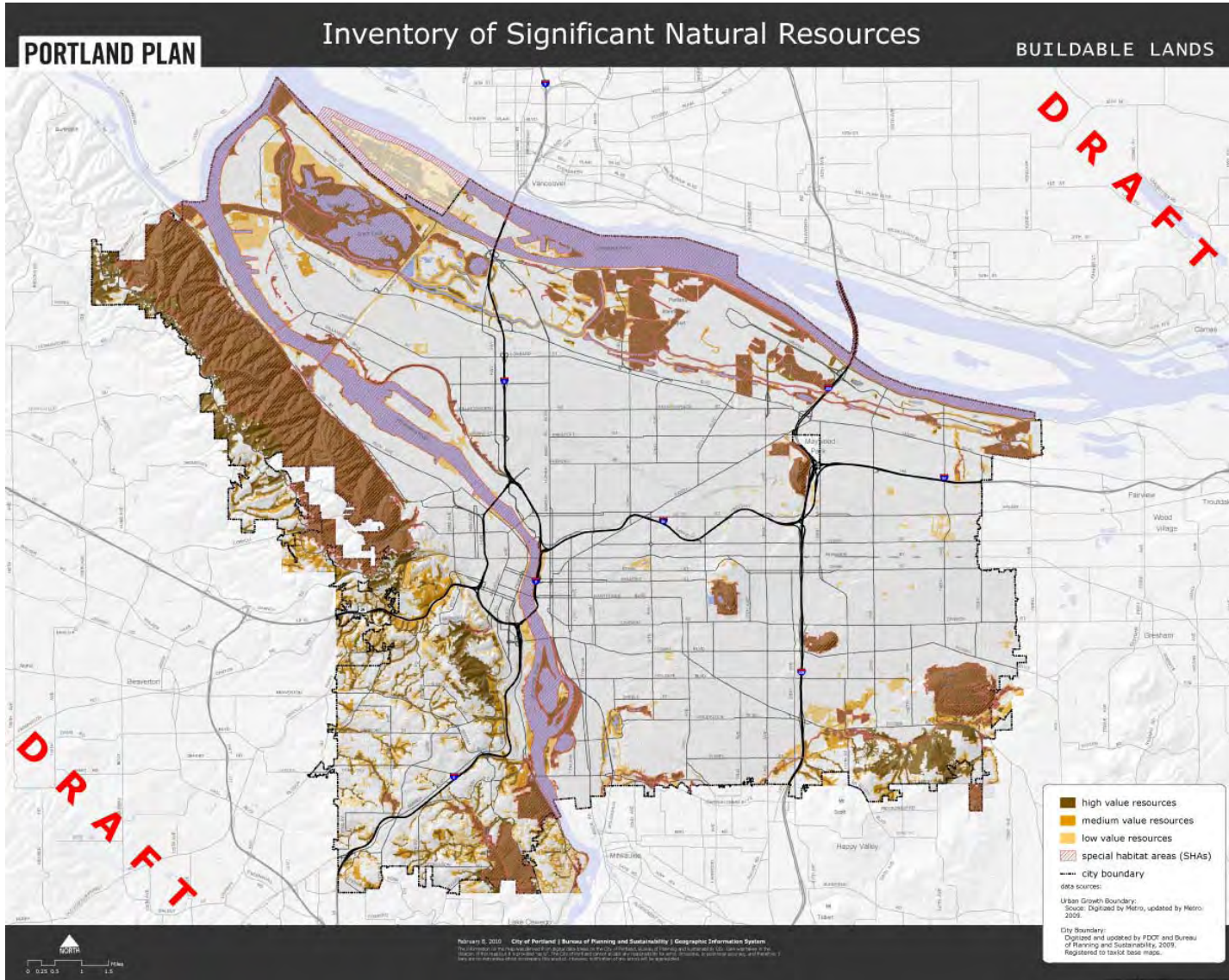
# Hazards



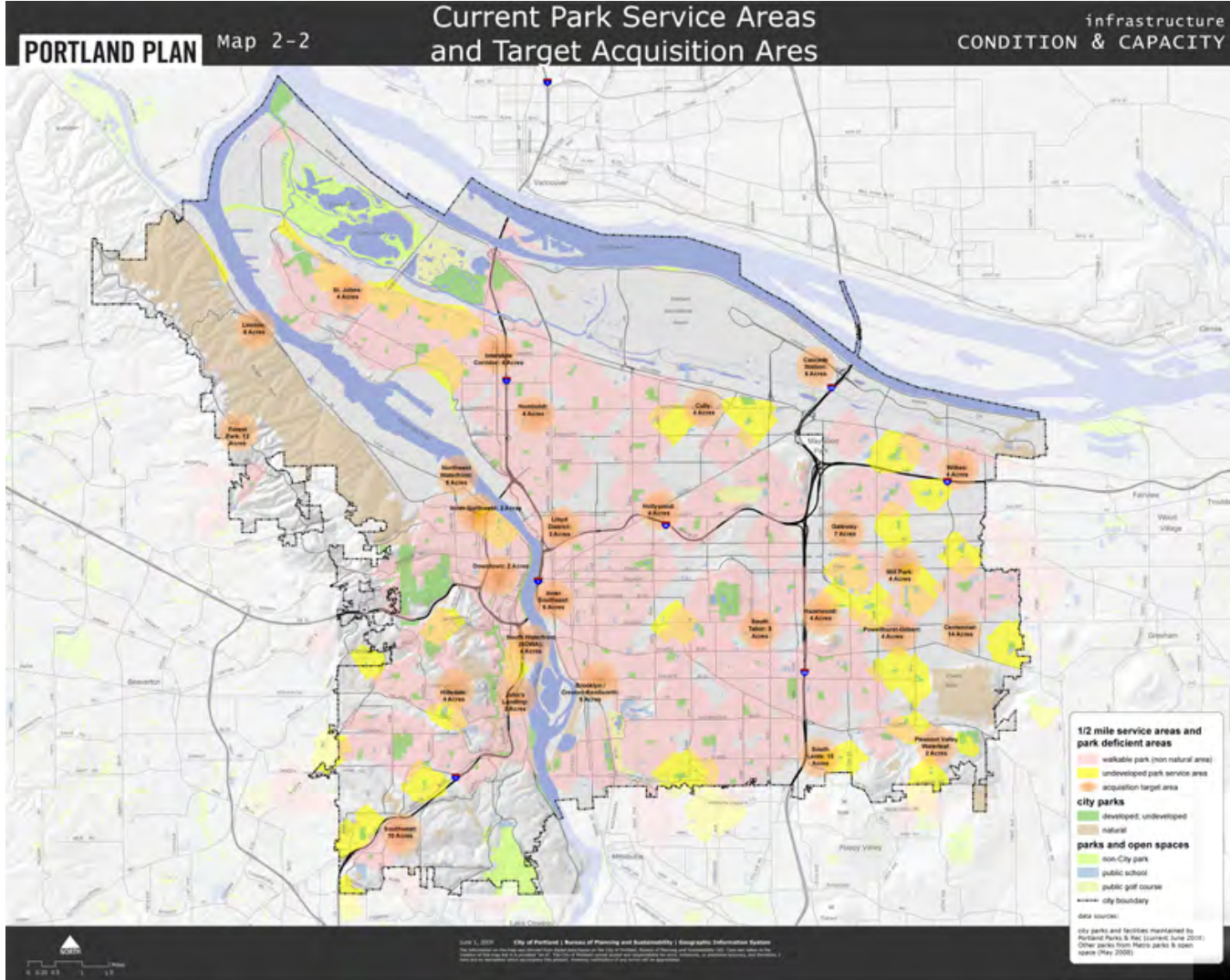
# NRI Map: Natural Features



# NRI Map: Natural Resource Inventory



# Underserved Parks Areas







Individual and Group Activity

- Step 1: 3 minute written exercise
- Step 2: Small group discussion, report-back and closing

**WHAT'S NEXT**

# March and April TAG Meetings



- Prosperity, Business Success & Equity: **March 30**
- Education & Skill Development: **March 24**
- Sustainability & the Natural Environment: **March 10**
- Human Health, Food & Public Safety: **March 16**
- Design, Planning & Public Spaces: **March 31**
- Neighborhoods & Housing: **March 18**
- Transportation, Technology & Access: **March 25**
- Quality of Life & Civic Engagement: **April 1**
- Arts, Culture & Innovation: **TBD**



# What's Next: Portland Plan

- **Fill out your [Round 1] surveys by March 31!**
- **Open staff meetings in March**
- **Setting Direction: Round 2 Workshops in April and May**
- **Monthly PPAG and CIC meetings (ongoing)**
- **Next Planning Commission Hearing, June (Date TBD)**



# KEEP UP WITH THE CONVERSATION

- [www.pdxplan.com](http://www.pdxplan.com)
- Twitter: @PDXPlan | #PDXPlan
- Facebook: [www.facebook.com/PDXPlan](http://www.facebook.com/PDXPlan)

