

# PORTLAND PLAN

ABOUT THE PORTLAND PLAN

LEARN ABOUT YOUR CITY

PORTLAND PLAN NEWS

MY PORTLAND PLAN

POL Government Special Projects Portland Plan Learn About Your City Portland Plan Atlas  
6. Population and Demographics

## Population and Demographics

These maps present an overview of some basic demographic and population estimates for the City of Portland. They show population characteristics for race, ethnicity, educational attainment, income and poverty levels by neighborhood area. These maps can provide insight into who lives where in Portland.

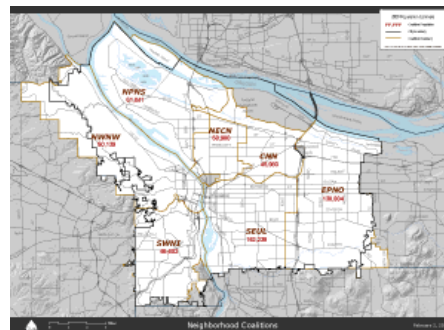
### Population by Neighborhood

SHARE

## 6a. Population by Neighborhood



This map shows the total population of Portland by neighborhood. SE Portland has the highest population at over 150,000 residents, followed by East Portland at nearly 140,000 residents. Central NE has about 46,000 residents, the least of any neighborhood area. Roughly 80% of Portland residents live on the Eastside.



Population by Neighborhood (PDF)

Get Adobe Reader

### PORTLAND PLAN ATLAS

- [1. District Baseline Information](#)
- [2. Metro 2040 Growth Concept](#)
- [3. Perspectives on Portland's Urban Form](#)
- [4. Urban Form Directions and Trends](#)
- [5. Future Possibilities and Choices](#)
- 6. Population and Demographics**
- [7. Buildable Lands Inventory](#)

### 6. POPULATION AND DEMOGRAPHICS

- [Population by Neighborhood](#)
- [Race and Ethnicity Population Estimates](#)
- [Educational Attainment by District Coalition](#)
- [Foreign Born by District Coalition](#)
- [Income by District Coalition](#)
- [Poverty by Household Type by District Coalition](#)
- [Households above and below the Poverty Line by District Coalition](#)
- [Poverty by Census](#)

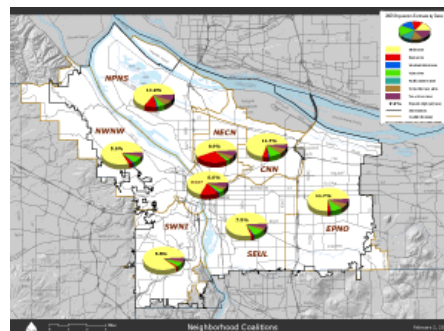
### Race and Ethnicity Population Estimates

SHARE

## 6b. Race and Ethnicity Population Estimates by Neighborhood Coalition



This map shows 2009 population estimates by race for Portland, as well as the percent Hispanic for each neighborhood. In all categories, the Eastside is more racially diverse than the Westside. Hispanics are most concentrated in North Portland at nearly 15% of the population. NE Portland has the highest concentration of African Americans at 30%. The concentration of Asians in Portland are mostly within NE, SE, and outer East Portland, with a percent population of 11%, 10%, and 9% respectively. Whites are the most common race group citywide.



Race and Ethnicity (PDF)

Get Adobe Reader

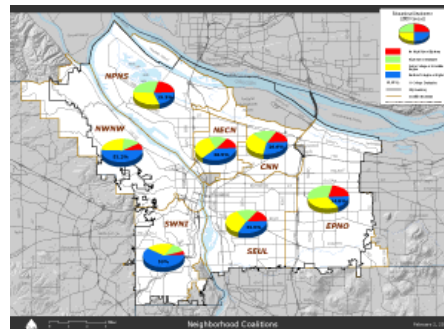
### Educational Attainment by District Coalition

SHARE [social media icons]

## 6c. Educational Attainment by District Coalition



This map shows educational attainment for Portland by district coalition for 2000. Southwest Portland has the most college graduates at 59%, while East Portland has the least at just under 15%. 20% of the population in North Portland and East Portland do not have a high school diploma. About 30% of the population city wide has had some college or has an Associate's degree.



[Educational Attainment \(PDF\)](#)

[Get Adobe Reader](#)

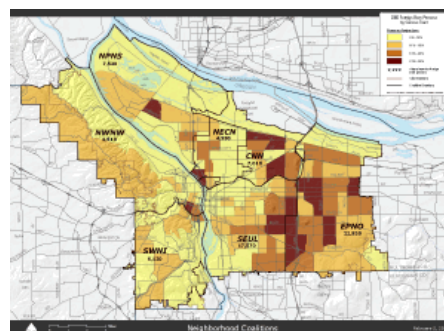
### Foreign Born by District Coalition

SHARE [social media icons]

## 6d. Foreign Born Population by District Coalition



This map shows the percent and total population of foreign-born people in Portland for 2000 by census tract. All but one census tract with over 20% foreign born concentrations are on the East side. East Portland has both the greatest concentration and the largest population of foreign born people. SE Portland also has a high foreign born population of 17,570. Although Central NE does not have a particularly large total population of foreign born people, the concentration by census tract is relatively high. Both NE Portland and NW/Downtown Portland have fairly low foreign born populations and concentrations.



[Foreign Born Population \(PDF\)](#)

[Get Adobe Reader](#)

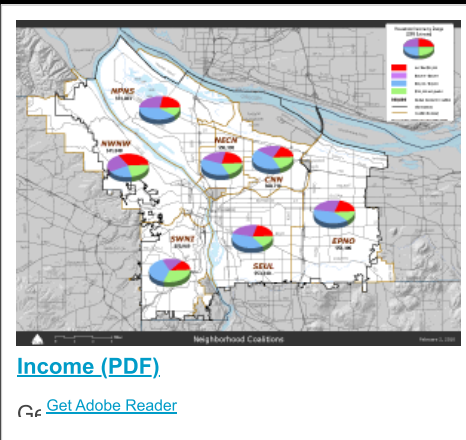
### Income by District Coalition

SHARE [social media icons]

## 6e. Income by District Coalition



This map shows the household income of Portland in 2009 by district coalition. Citywide, most households fall into the 50,000 to 99,000 income group. The median Household income is greatest for SW Portland at over \$70,000 and it is lowest for NW/Downtown at about \$41,000. Northwest/Downtown may be experiencing the greatest income gap: over 34% of the population makes less than 24,000, while over 20% makes more than \$100,000.



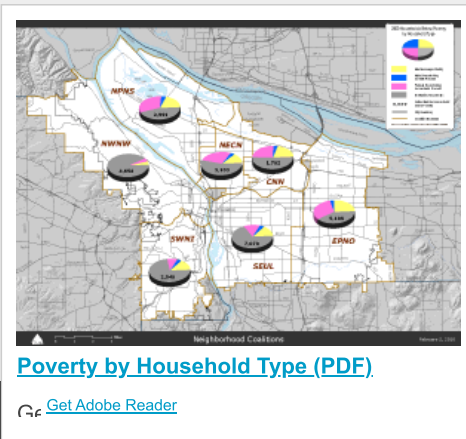
### Poverty by Household Type by District Coalition

SHARE [social media icons]

## 6f. Poverty by Household Type by District Coalition



This map shows those households below poverty in 2000 by household type. These include married couples, male householder with no wife present, female householder with no husband, and nonfamily households. SE Portland has the most number of households living below the poverty level, while Central NE has the least. A large portion of those families living in poverty in NE and East Portland are female-headed households. Citywide, nonfamily households are those most often below the poverty level.



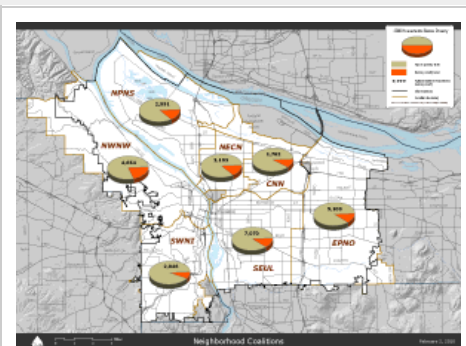
### Households above and below the Poverty Line by District Coalition

SHARE [social media icons]

## 6g. Households Above or Below the Poverty Line by District Coalition



This map shows the households in Portland above or below the poverty level in 2000. Again, SE has the most number of households in poverty, however, NW/downtown has the highest poverty rate at 19%. It should be noted that these data are from the year 2000, when the Pearl District redevelopment was just beginning, and that the NW area includes both a high concentration of single occupancy units, low-income and affordable housing, and also now condominiums.



[Line \(PDF\)](#)

[Get Adobe Reader](#)

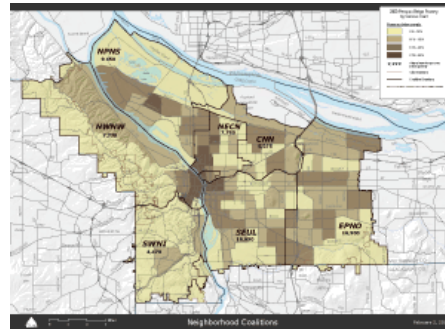
**Poverty by Census**

SHARE

# 6h. Poverty by Census Tract



This map shows the percent of people below poverty in each census tract, as well as the actual number of people in poverty in each area of Portland. SE and outer East Portland have the most number of people living in poverty; over 16,000 for each. However, poverty is most concentrated along both sides of the Willamette near the Steel Bridge: in Old Town and also in the Boise/Eliot NE neighborhoods. These census tracts have over 25% of their populations living below poverty.



**Poverty by Census Tract (PDF)**

Focus on: [Central City/West](#) | [North](#) | [Inner East](#) | [East](#)

[Get Adobe Reader](#)

[RSS Feed](#)

QUICK LINKS	PARTNERS	CONNECT
<p><b>Navigation</b></p> <ul style="list-style-type: none"> <li><a href="#">About the Portland Plan</a></li> <li><a href="#">Learn About Your City</a></li> <li><a href="#">Portland By Neighborhood</a></li> <li><a href="#">Read the Handbook</a></li> <li><a href="#">Portland Plan News</a></li> </ul> <p><b>City of Portland Links</b></p> <ul style="list-style-type: none"> <li><a href="#">Bureau of Planning and Sustainability</a></li> <li><a href="#">City Commissioners</a></li> </ul>	<p><b>Partner Links</b></p> <ul style="list-style-type: none"> <li><a href="#">City of Portland</a></li> <li><a href="#">Multnomah County</a></li> <li><a href="#">Metro</a></li> <li><a href="#">TriMet</a></li> <li><a href="#">Portland Development Commission</a></li> <li><a href="#">Portland State University</a></li> <li><a href="#">Mt. Hood Community College</a></li> <li><a href="#">Portland Public Schools</a></li> <li><a href="#">David Douglas School District</a></li> <li><a href="#">Parkrose School District</a></li> <li><a href="#">Reynolds School District</a></li> <li><a href="#">Centennial School District</a></li> <li><a href="#">Oregon Health &amp; Science University</a></li> <li><a href="#">Portland Community College</a></li> <li><a href="#">Home Forward (Housing Authority of Portland)</a></li> <li><a href="#">Oregon Department of Land Conservation and Development</a></li> <li><a href="#">Oregon Department of Transportation</a></li> <li><a href="#">West Multnomah Soil and Water Conservation District</a></li> <li><a href="#">East Multnomah Soil and Water Conservation District</a></li> <li><a href="#">Multnomah County Drainage District</a></li> </ul>	<p><b>Social Media</b></p> <ul style="list-style-type: none"> <li> Subscribe to our RSS feeds <a href="#">All Updates</a>   <a href="#">Just the News</a></li> <li> Follow us on Twitter <a href="#">@PortlandBPS</a>   <a href="#">#PDXPlan</a></li> <li> Be a fan on Facebook <a href="#">/PortlandBPS</a></li> <li> View our photos on Flickr <a href="#">/PDXPlan</a></li> <li> Send us an email <a href="mailto:bps@portlandoregon.gov">bps@portlandoregon.gov</a></li> </ul> <p><a href="#">Portland Plan Social Media Disclaimer</a></p> <p><b>Contact Information</b></p> <p>The Portland Plan          1900 SW 4th Avenue, Suite 7100          Portland, OR 97201          Phone (503) 823-7700          Fax (503) 823-7800</p> <p><b>¿Preguntas?</b></p> <p>Para obtener más información en español favor llamar a la línea de Información de la Ciudad y el Condado, (503) 823-4000.</p>

[Worksystems, Inc.](#)

[Multnomah Education Service District](#)

[Regional Arts & Culture Council](#)

[Port of Portland](#)

© 2023 [City of Portland, Oregon](#)  
[Privacy Policy](#) - [Accessibility](#)

[Portland Plan](#) - [About the Portland Plan](#) - [Learn About Your City](#) - [Portland Plan News](#) - [My Portland Plan](#) - [Development](#)