

Phase II Workshops Agenda - Setting Direction

- Portland Plan Update
- Action Area Group Discussions
- Equity Discussion
- Wrap-up



THE PORTLAND PLAN

What issue brought you to this workshop?

THE PORTLAND PLAN

Thank You to Our Prize Sponsors

- Artemis Café



Phase II Workshops Agenda - Setting Direction

- Portland Plan Update
- Action Area Group Discussions
- Equity Discussion
- Wrap-up



The Portland Plan

What are we trying to do?

- Set clear goals for what kind of city we want to become by 2035
- Set priorities - we can't do everything
- Coordinate the actions of different government agencies



Our Strategic Plan Local Partners

City of Portland | Metro | Multnomah County
 Portland State University | Oregon Health & Science University
 Portland Public Schools | Parkrose School District
 Centennial School District | David Douglas School District
 Reynolds School District | Worksystems, Inc.
 Portland Community College | TriMet | ODOT
 Mt Hood Community College | University of Oregon
 Portland Development Commission | Housing Authority of Portland
 East Multnomah Soil & Water Conservation District
 West Multnomah Soil & Water Conservation District
 Multnomah County Drainage District No. 1



Federal and State Partners

- Federal**
 - Housing and Urban Development (HUD)
 - Environmental Protection Agency (EPA)
 - US Fish and Wildlife Service
 - General Services Administration (GSA)
 - Centers for Disease Control (CDC)*
- State**
 - Dept. of Business Development
 - Dept. of Environmental Quality (DEQ)
 - Dept. of Human Services (DHS)
 - Dept. of Transportation (ODOT)
 - Dept. of Land Conservation and Development (DLCD)*



Nine Action Areas



- Prosperity & Business Success
- Education & Skill Development
- Arts, Culture & Innovation
- Sustainability & the Natural Environment
- Human Health, Food & Public Safety
- Equity, Civic Engagement & Quality of Life
- Design, Planning & Public Spaces
- Neighborhoods & Housing
- Transportation, Technology & Access



We would like to be ...
 a **THRIVING** and **SUSTAINABLE** city
 ...now and in the future.

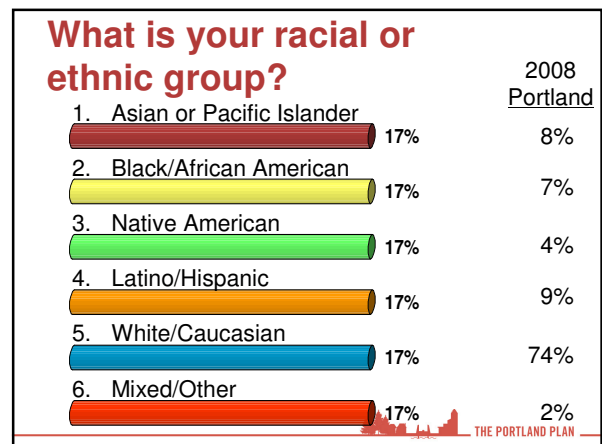
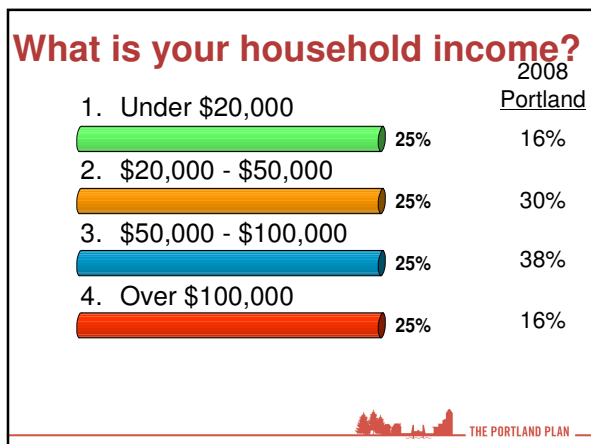
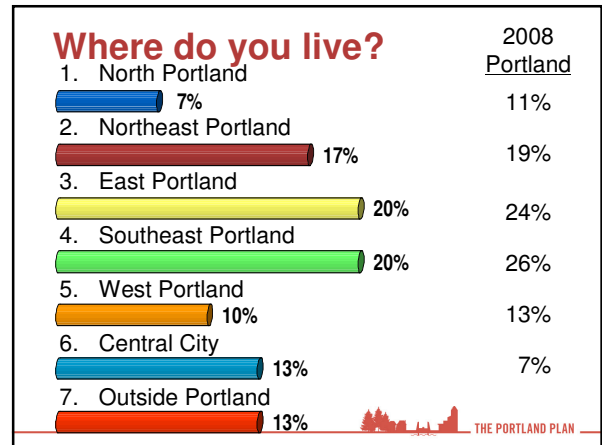
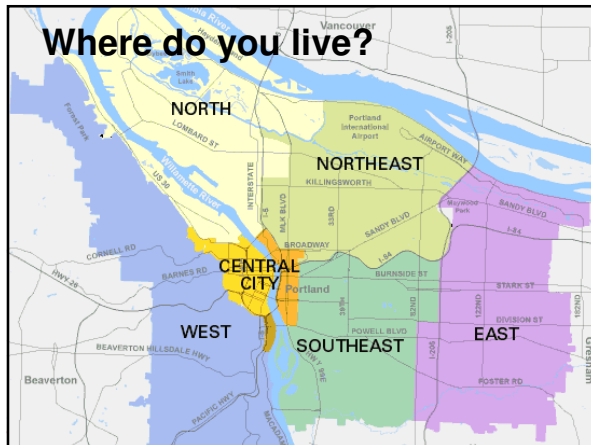
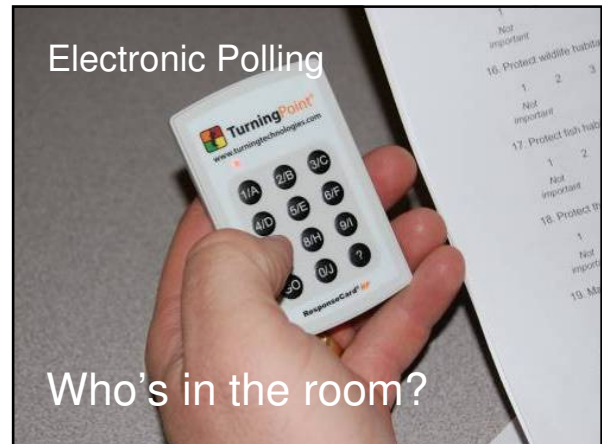


Equity Applies To Everything

Equity is where everyone has access to opportunities necessary for satisfying essential needs and advancing their well-being.

Coalition for a Livable Future Regional Equity Atlas







What we did we hear?

Over the next 25 years, what will be the most important issue facing Portland?

1. Prosperity & Business Success  20%
2. Education & Skill Development  19%
3. Sustainability & the Natural Environment  19%
4. Human Health, Food & Public Safety  11%



The economy will drive success.

Photo: Ebraz Oregon Steel



Education is the key to prosperity.



We can't move forward without equity.



We want healthy streams and watersheds.

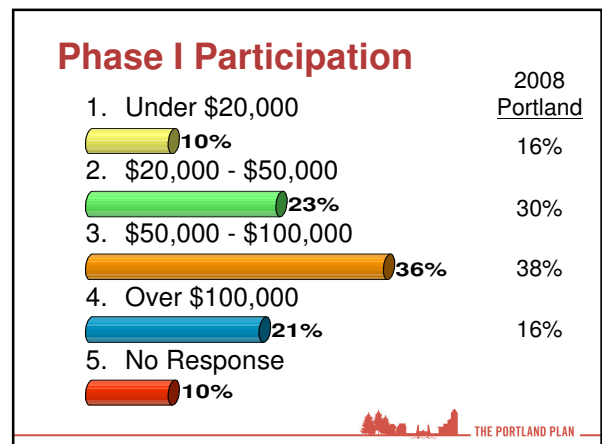
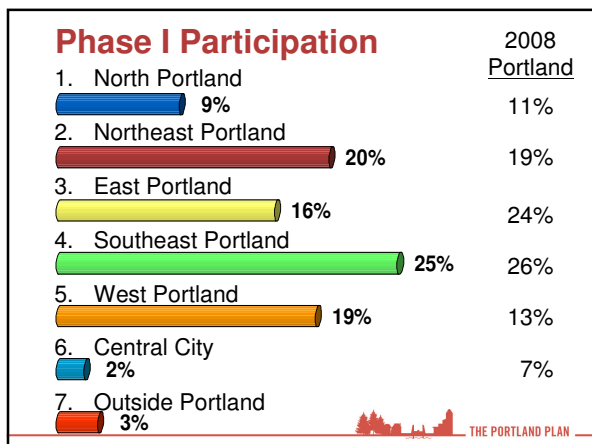


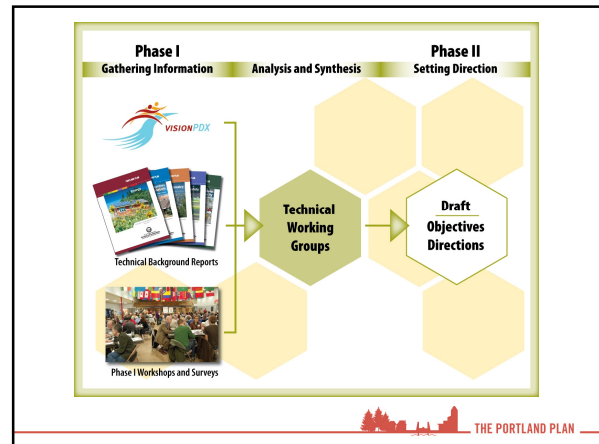
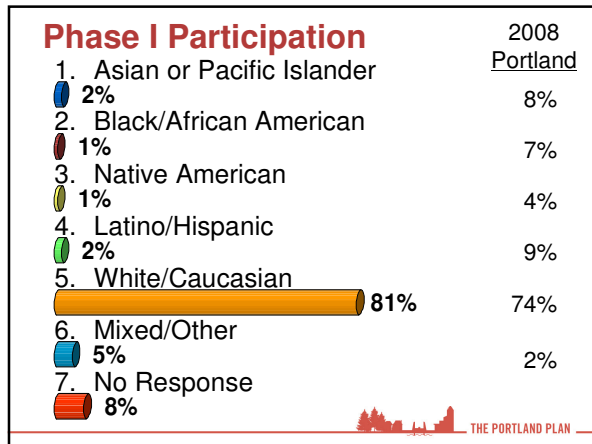
Phase I Participation

Over **900** people participated in the Phase I workshops.

Over **8,200** people completed surveys.

Since the workshops, we have presented at **75** community meetings and events with over **1,500** people in attendance.





Phase 2 – Setting Direction

- Set Directions
- Define Objectives
- Identify Actions

THE PORTLAND PLAN

What is a Direction?

- The goals we would like to achieve
- It describes a change we want to make
- We can have multiple directions
- Many of the directions are complementary

THE PORTLAND PLAN

What is an Objective?

- A clear goal for what kind of city we want to become by 2035
- Measurable – how do we define success?

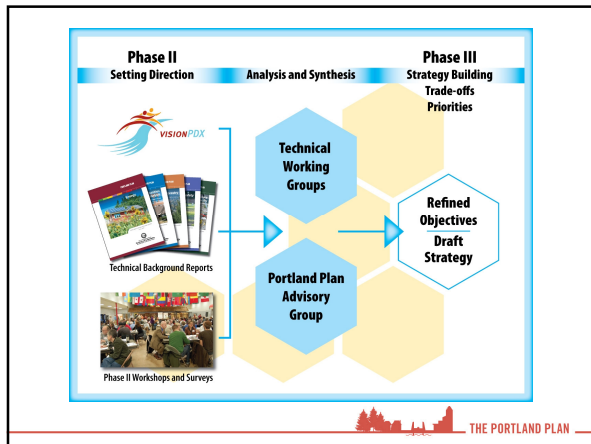
2010 → → 2035

THE PORTLAND PLAN

Phase II Workshops Agenda - Setting Direction

- Portland Plan Update
- [Action Area Group Discussions](#)
- Equity Discussion
- Wrap-up

THE PORTLAND PLAN



Action Area Discussion Groups



- Step 1 : Introductions
- Step 2: Ground Rules
- Step 3: Pick a direction
- Step 4: Discuss

Action Area Discussion Groups



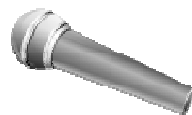
- Listen carefully
- Respect other views
- Critique the issues, not the people
- *Share the Air*
- Consider all concerns

Action Area Discussion Groups



- Discussion Questions
- Are these the right objectives?
 - What can we do to make this happen?
 - Is anything important missing?

What did you learn?



Phase II Workshops Agenda - Setting Direction

- Portland Plan Update
- Action Area Group Discussions
- Equity Discussion
- Wrap-up

Why Equity?

- The entire community benefits
- Communities are experiencing unacceptable outcomes
- Makes good financial sense
- Not a guarantee, but we need to do more



Equity: What does it look like?

- Everyone has **access to opportunities**.
- The **benefits and burdens** of growth and change are shared across our communities.
- Everyone is **involved** as full & equal partners in public decision making.

Coalition for a Livable Future



Equity Factors

- **Ethnic/Racial**
Communities of Color, Immigrants
- **Socioeconomic** - Poverty
- **Gender** and **Sexual Orientation**
- **Ability** - physical and mental
- **Generational** – youth and elderly
- **Geographic**



Addressing our challenges through an “equity lens”

We need to ensure that everyone:

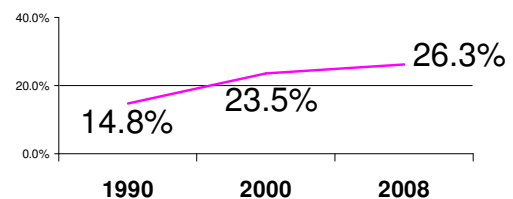
- acknowledges historic disparities
- has access to **opportunity**
- shares the **benefits** and **burdens** of Portland’s growth and change
- is involved as a full and **equal partner**



What Equity means to Portland?



Communities of Color in Multnomah County



from Coalition of Communities of Color



Who is in foster care?

1.5% of children in Multnomah County

1.1% of White children

3.2% of African American Children

21.8% of Native American Children

from Coalition of Communities of Color



What is the Achievement Gap?

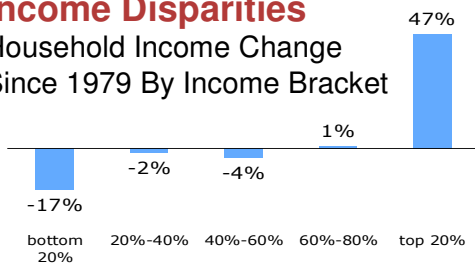
In Multnomah County, **71%** of white students met the 10th Grade reading standard.

Only **45%** of students of color met the reading standard.



Income Disparities

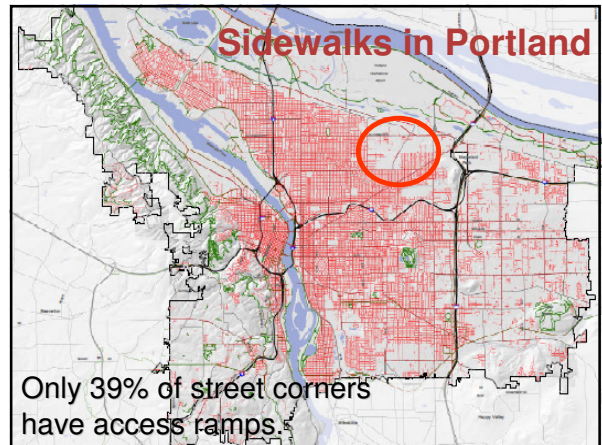
Household Income Change Since 1979 By Income Bracket



Women in Portland generally earn **14%** less than men.



Sidewalks in Portland



Only **39%** of street corners have access ramps.

Equity Works



DISABILITY RIGHTS OREGON



Action Area Discussion Groups



How do we ensure that everyone:

- Has access to opportunity?
- Shares the benefits and burdens of change?
- Is involved as equal partners?



What did you learn?





Phase II Workshops Agenda - Setting Direction

- Portland Plan Update
- Action Area Group Discussions
- Equity Discussion
- Wrap-up

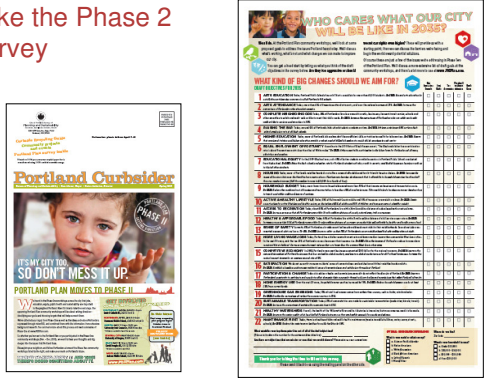




WAYS TO STAY INVOLVED

- Show up and participate in a workshop
- Take the new Phase 2 survey
- Submit additional comments online at PDXPlan.com
- Comment to the Planning Commission on **June 8, July 13, and July 27**
- Organize a community meeting
- Participate in the next round of workshops in September



Take the Phase 2 Survey


Learn more about your city




Help Get The Word Out Phase II Community Workshops

Save the Date

Monday April 26 6:30-9:00 pm	Thursday April 29 6:30-9:00 pm	Saturday May 1* 10:00 am- 12:30 pm	Monday May 10 6:30-9:00 pm	Saturday May 15* 10:00 am- 12:30 pm	Tuesday May 18 6:30-9:00 pm
SOUTHEAST Central Catholic High School 2401 SE Stark Street	NORTHEAST Beaumont Middle School 4043 NE Fremont Street	NORTH University Park Community Center 9009 N Foss Avenue	CENTRAL CITY University of Oregon - White Stag Block, Rooms 142 & 144 70 NW Couch Street	EAST David Douglas High School 1001 SE 155th Avenue	SOUTHWEST Jackson Middle School 10625 SW 35th Avenue



THE PORTLAND PLAN


The Portland Plan

Nov/Dec 2009 Phase I Workshops
Groundtruthing and Crowdsourcing

Apr/May 2010 Phase II Workshops
Where do we want to go?
Setting Direction

Sept 2010 Phase III Workshops
How do we get there?
Strategy Building


Jan 2011 Phase IV Draft Strategic Plan



THE PORTLAND PLAN

How did we do?

Please fill out a **Workshop Evaluation card** before you leave.

 THE PORTLAND PLAN Phase II Workshop
EVALUATION

Please take a moment to let what you think about the Workshop. Circle the responses that best reflect your opinions.

1) Overall, this workshop was a useful event. STRONGLY DISAGREE DISAGREE NEUTRAL AGREE STRONGLY AGREE

2) The workshop was conducted in a way that was fair to everyone. STRONGLY DISAGREE DISAGREE NEUTRAL AGREE STRONGLY AGREE

3) The workshop provided good information about the Portland Plan. STRONGLY DISAGREE DISAGREE NEUTRAL AGREE STRONGLY AGREE


4) This workshop provided me with a sense that the City of Portland is listening to my concerns. STRONGLY DISAGREE DISAGREE NEUTRAL AGREE STRONGLY AGREE

5) Prior to today, I already had a high level of knowledge and involvement on Portland related issues. STRONGLY DISAGREE DISAGREE NEUTRAL AGREE STRONGLY AGREE

6) The length of the workshop was... TOO SHORT ABOUT RIGHT TOO LONG

7) How did you hear about the workshop? (circle all that apply)

<input type="checkbox"/> CURRENT NEWSLETTER	<input type="checkbox"/> EMAIL NOTICE	<input type="checkbox"/> COMMUNITY GROUP	<input type="checkbox"/> FACEBOOK
<input type="checkbox"/> CITY WEBSITE	<input type="checkbox"/> NEIGHBORHOOD	<input type="checkbox"/> PUBLIC MEETING	<input type="checkbox"/> TWITTER
		<input type="checkbox"/> OTHER	



THE PORTLAND PLAN

How to stay involved:

- www.pdxplan.com
- Twitter: [@PDXPlan](https://twitter.com/PDXPlan) | [#PDXPlan](https://twitter.com/PDXPlan)
- www.facebook.com/PDXPlan

How to contact us:

- Contact your District Planner:
Matt Wickstrom
 503-823-2834
- Email: PDXPlan@portlandoregon.gov



THE PORTLAND PLAN