

# PORTLAND PLAN



## Food Systems

MAPS

PORTLAND PLAN BACKGROUND REPORT  
FALL 2009

**PLANNING AND SUSTAINABILITY COMMISSION  
RECOMMENDED DRAFT  
DECEMBER 14, 2010**



City of Portland Bureau of  
**Planning and Sustainability**  
Sam Adams, Mayor | Susan Anderson, Director

# Acknowledgments

## Bureau of Planning and Sustainability (BPS)

Mayor Sam Adams, *Commissioner-in-charge*  
Susan Anderson, *Director*  
Joe Zehnder, *Chief Planner*  
Steve Dotterrer, *Principal Planner*  
Eric Engstrom, *Principal Planner*  
Gil Kelley, *Former Director, Bureau of Planning*

## Primary Authors

Amanda Rhoads, *City Planner, BPS*  
Heidi Guenin, *Community Service Aide, BPS*

## Contributors

Steve Cohen, *Food Policy and Programs Manager, BPS*  
Gary Odenthal, *Technical Services Manager, BPS*  
Carmen Piekarski, *GIS Analyst, BPS*  
Portland Multnomah Food Policy Council

*The Food Policy Council is a citizen-based advisory council to the City of Portland and Multnomah County. The Council brings citizens and professionals together from the region to address issues regarding food access, land use planning issues, local food purchasing plans and many other policy initiatives in the current regional food system. The Food Policy Council has been in conversation with BPS since 2007 regarding the Portland Plan. Two Council committees, the Land Use Committee and Food Access Committee, provided input to the development of this document in 2008, while the Urban Food Initiative/Portland Plan Committee reviewed text in 2009.*

## Additional Reviewers

Richard Benner, *Portland Multnomah Food Policy Council*;  
Suzanne Briggs, *Kaiser Permanente*; Rachel Bristol, Tammy VanderWoude, *Oregon Food Bank*;  
Erin Copley; Justin Davidson, *FarmUP*; Noelle Dobson, Amy Gilroy, Heidi Guenin, *Community Health Partnership*;  
Amelia Hard, *The Historic Portland Public Market Foundation*; Debra Lippoldt, *Growing Gardens*;  
Corliss McKeever, *African American Health Coalition*; Jeremy O'Leary, *Portland Peak Oil*;  
Robin Scholetzky, *Portland Multnomah Food Policy Council*; Ryan Wist, *Scenic Fruit Company*

# Food Systems



PROSPERITY AND BUSINESS SUCCESS



SUSTAINABILITY AND THE NATURAL ENVIRONMENT



DESIGN, PLANNING AND PUBLIC SPACES



NEIGHBORHOODS & HOUSING



TRANSPORTATION, TECHNOLOGY AND ACCESS



EDUCATION AND SKILL DEVELOPMENT



HUMAN HEALTH, FOOD AND PUBLIC SAFETY



QUALITY OF LIFE, CIVIC ENGAGEMENT AND EQUITY



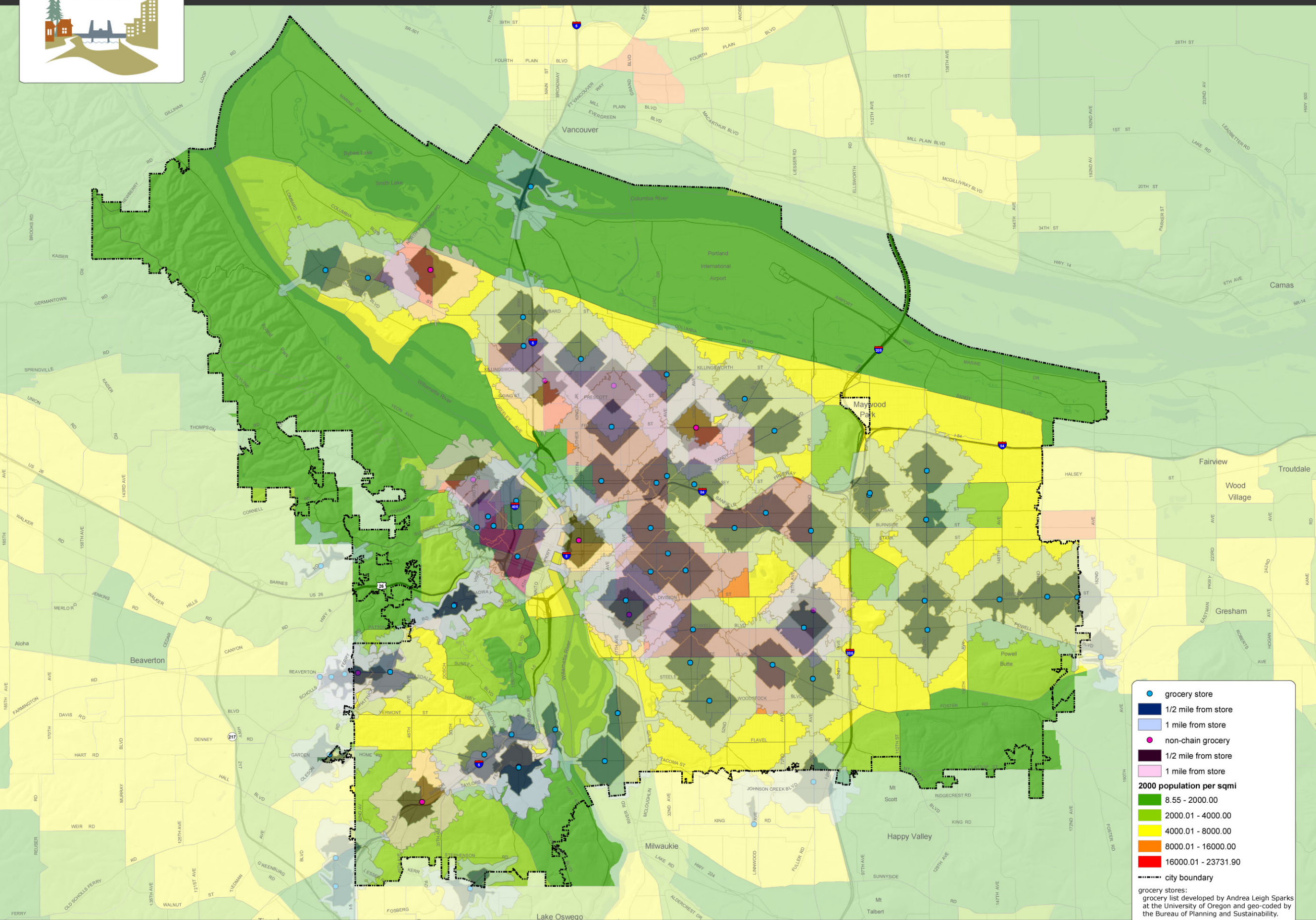
ARTS, CULTURE AND INNOVATION

## PORTLAND PLAN



City of Portland Bureau of  
**Planning and Sustainability**  
Sam Adams, Mayor | Susan Anderson, Director

To help ensure equal access to City programs, services and activities, the City of Portland will reasonably modify policies/procedures and provide auxiliary aids/services to persons with disabilities. Call (503) 823-7700 with such requests.



- grocery store
- 1/2 mile from store
- 1 mile from store
- non-chain grocery
- 1/2 mile from store
- 1 mile from store

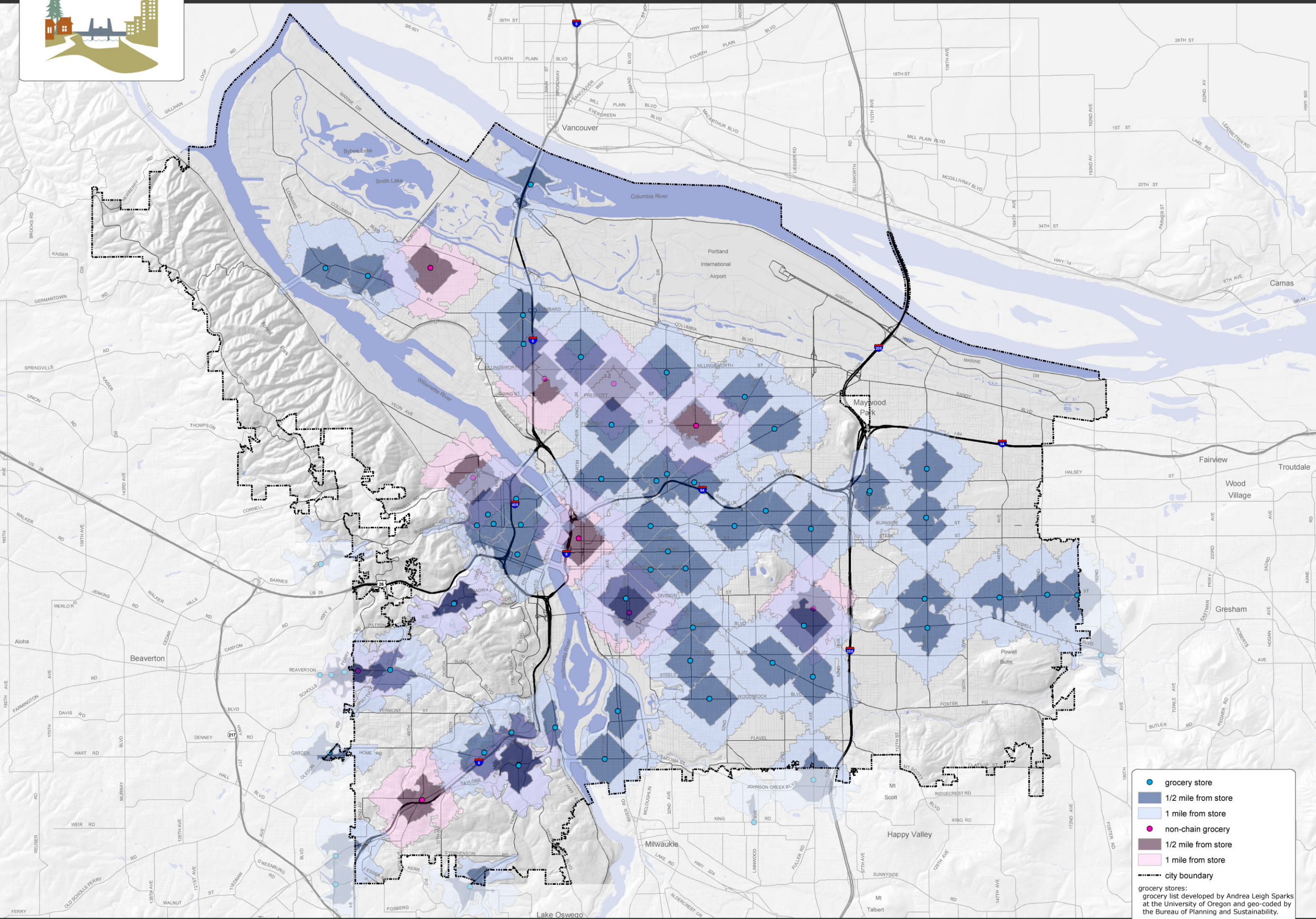
**2000 population per sqmi**

- 8.55 - 2000.00
- 2000.01 - 4000.00
- 4000.01 - 8000.00
- 8000.01 - 16000.00
- 16000.01 - 23731.90

----- city boundary

grocery stores:  
grocery list developed by Andrea Leigh Sparks at the University of Oregon and geo-coded by the Bureau of Planning and Sustainability.

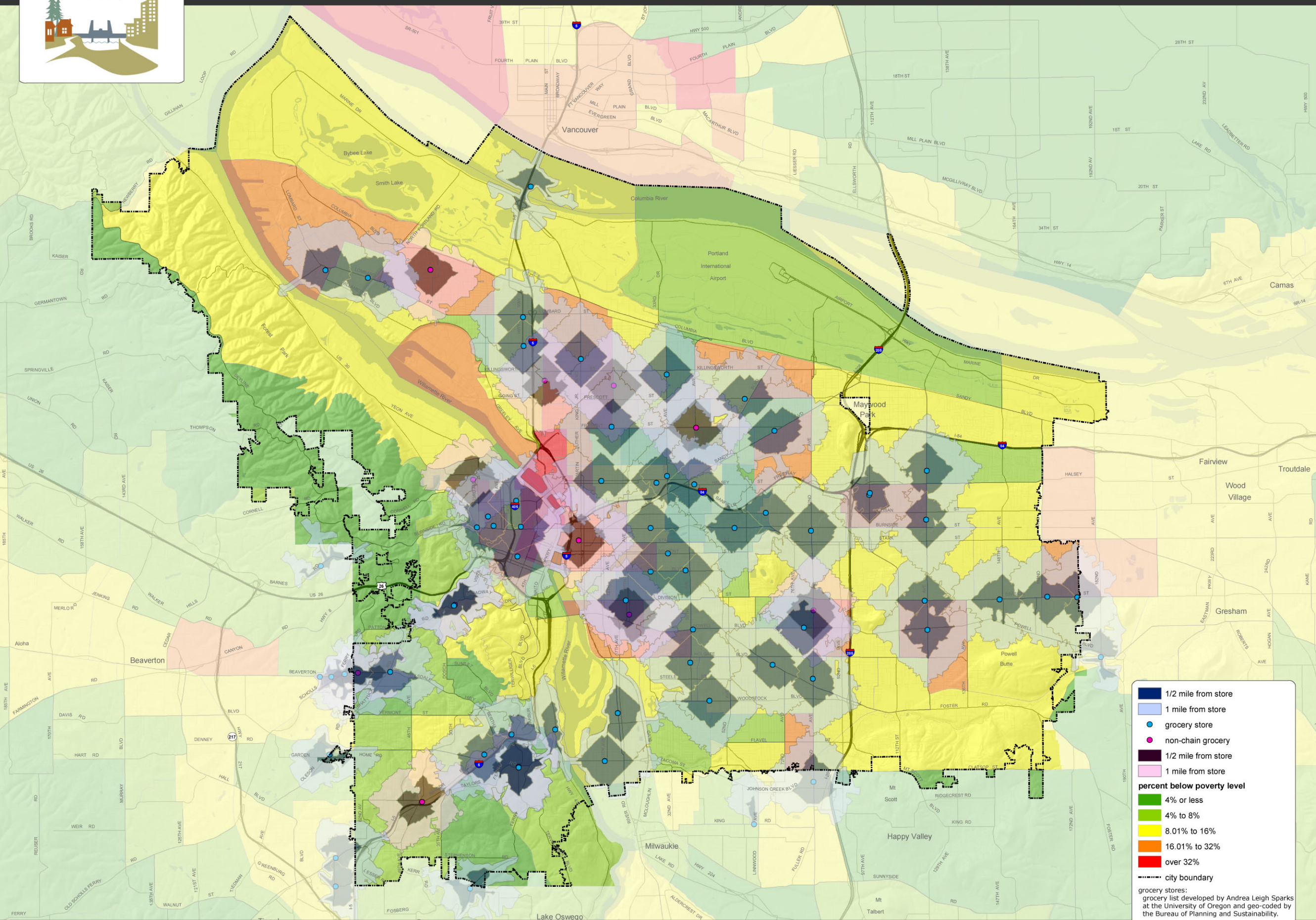
additional stores added by the Bureau of Planning and Sustainability, including food co-ops and a few other smaller or ethnic full-service stores.



- grocery store
- 1/2 mile from store
- 1 mile from store
- non-chain grocery
- 1/2 mile from store
- 1 mile from store
- city boundary

grocery stores:  
grocery list developed by Andrea Leigh Sparks at the University of Oregon and geo-coded by the Bureau of Planning and Sustainability.

additional stores added by the Bureau of Planning and Sustainability, including food co-ops and a few other smaller or ethnic full-service stores.



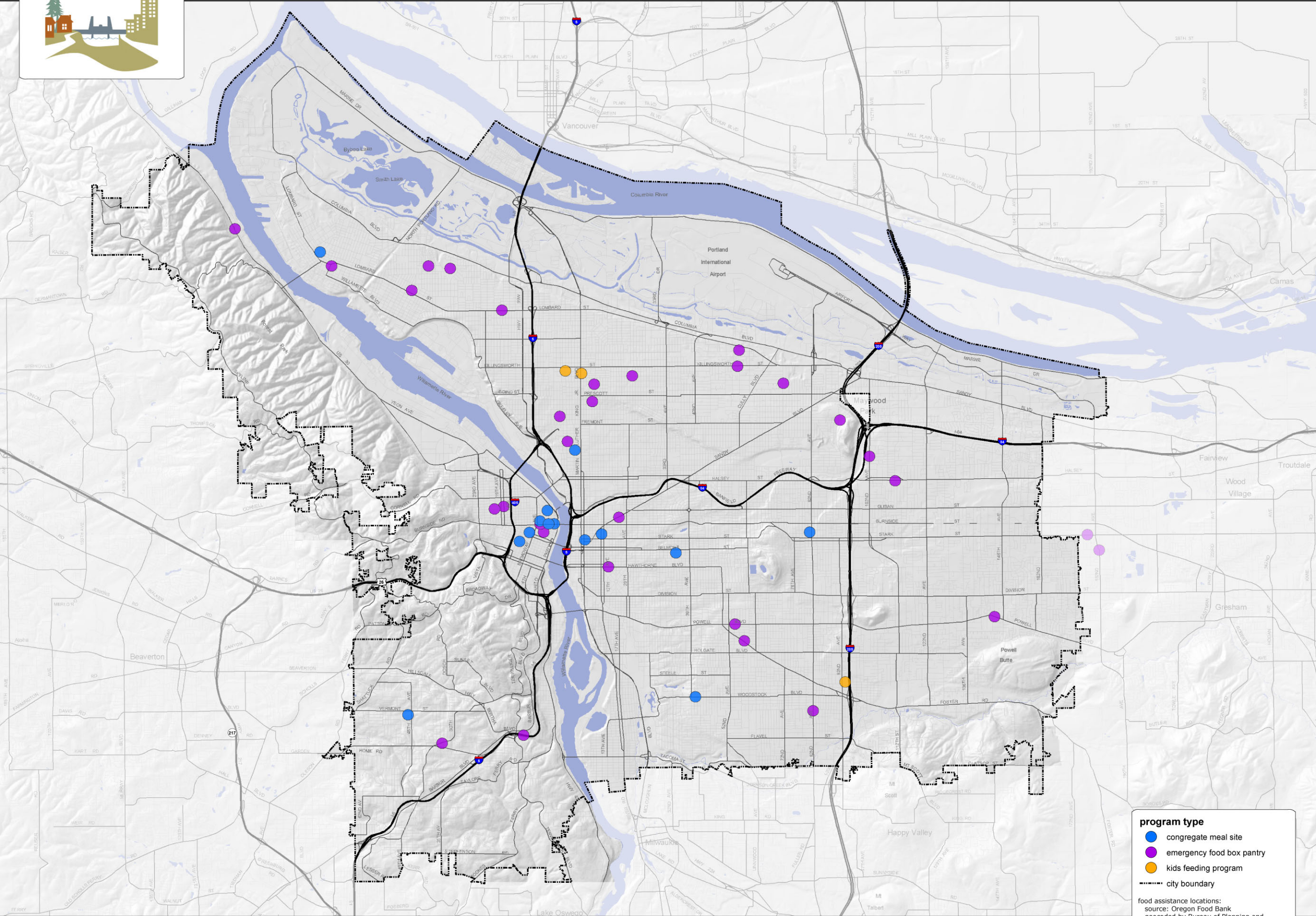
1/2 mile from store  
 1 mile from store  
 grocery store  
 non-chain grocery  
 1/2 mile from store  
 1 mile from store

**percent below poverty level**

4% or less  
 4% to 8%  
 8.01% to 16%  
 16.01% to 32%  
 over 32%

city boundary  
 grocery stores:  
 grocery list developed by Andrea Leigh Sparks at the University of Oregon and geo-coded by the Bureau of Planning and Sustainability.

additional stores added by the Bureau of Planning and Sustainability, including food co-ops and a few other smaller or ethnic full-service stores.

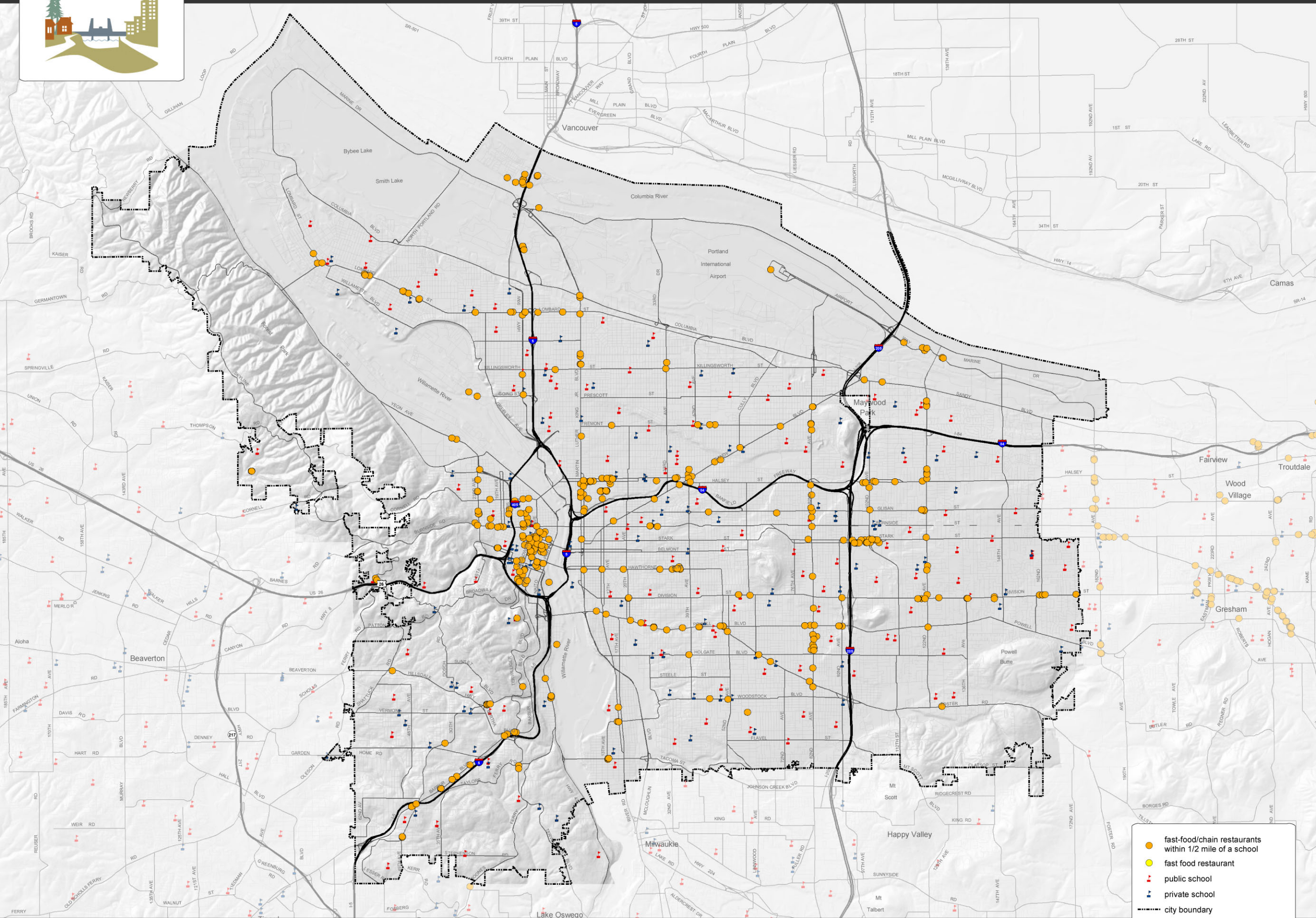


- program type**
- congregational meal site
  - emergency food box pantry
  - kids feeding program
  - city boundary

food assistance locations:  
source: Oregon Food Bank  
geocoded by Bureau of Planning and  
Sustainability (April 2009)

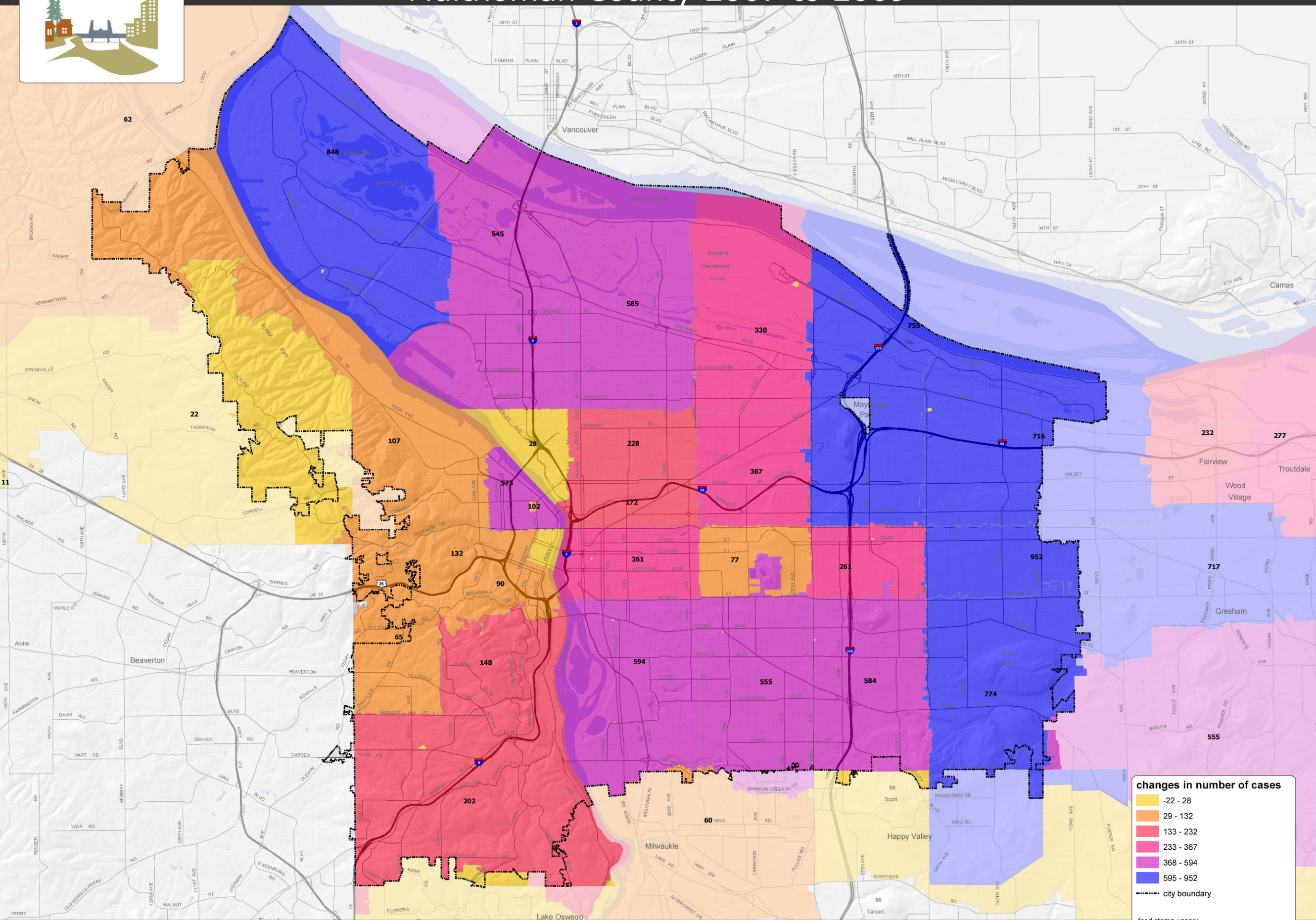
Note: Mobile Feeding Program (The  
Messenger Van) not mapped.





- fast-food/chain restaurants within 1/2 mile of a school
- fast food restaurant
- public school
- private school
- city boundary

restaurants:  
data provided by Multnomah County  
Department of Health (Feb. 2008).  
Location is approximate.



**changes in number of cases**

- 22 - 28
- 29 - 132
- 133 - 232
- 233 - 367
- 368 - 594
- 595 - 952

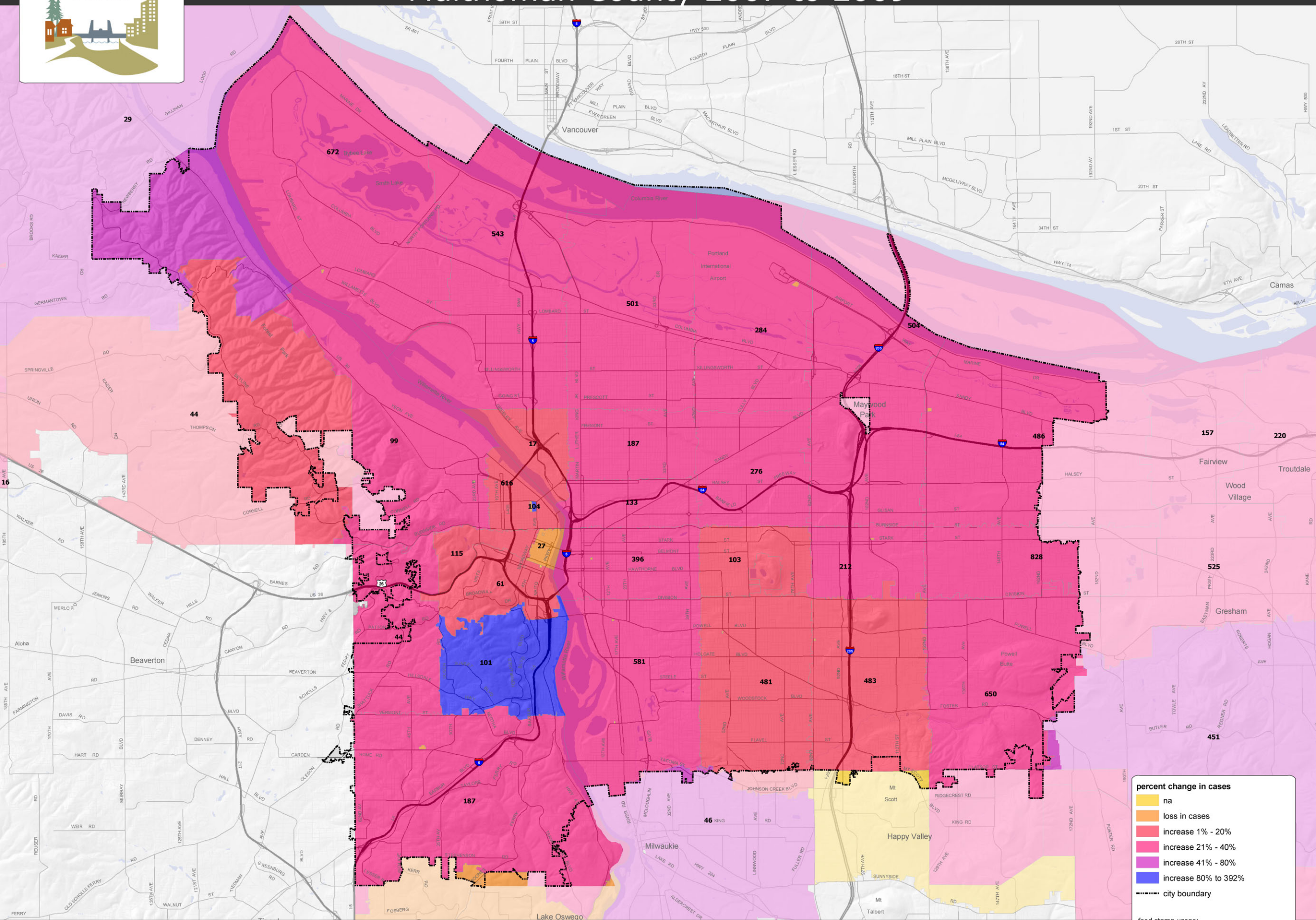
----- city boundary

food stamp usage:  
data provide by Multnomah County for  
January 2007, February 2008 and  
February 2009.





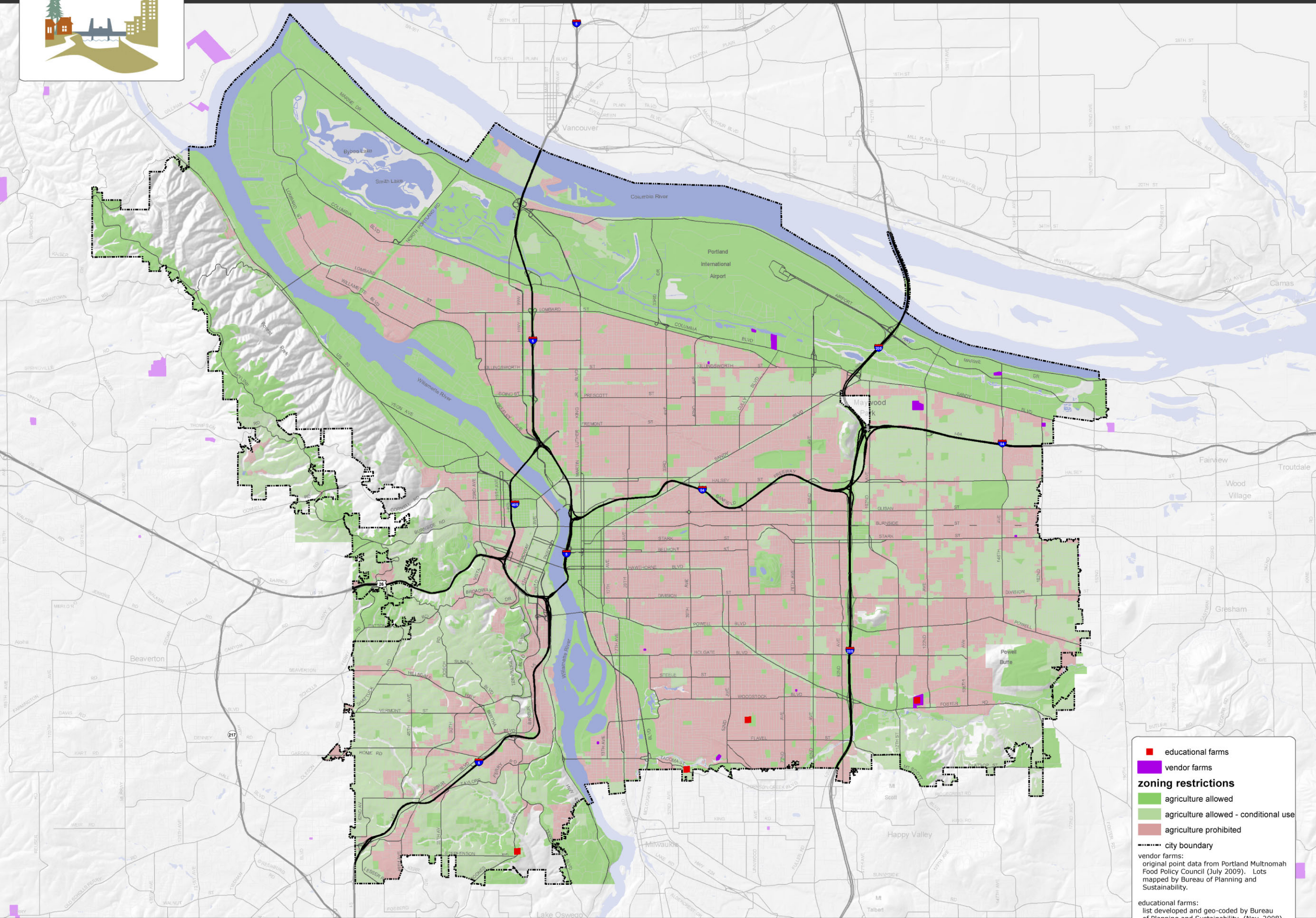
# Percent Change in Food Stamp Usage Multnomah County 2007 to 2009



**percent change in cases**

- na
- loss in cases
- increase 1% - 20%
- increase 21% - 40%
- increase 41% - 80%
- increase 80% to 392%
- city boundary

food stamp usage:  
data provide by Multnomah County for  
January 2007, February 2008 and  
February 2009.

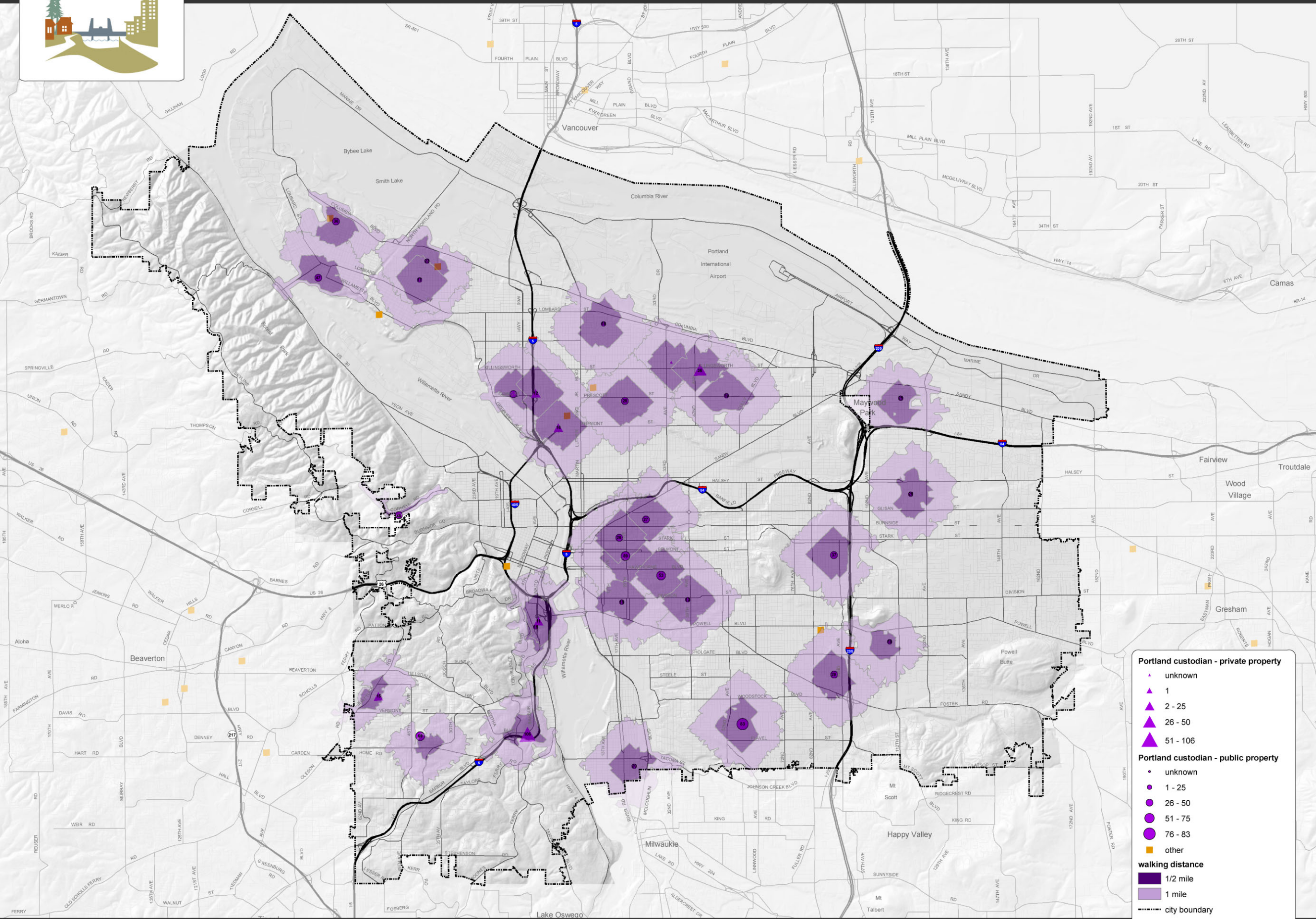


- educational farms
- vendor farms
- zoning restrictions**
- agriculture allowed
- agriculture allowed - conditional use
- agriculture prohibited
- city boundary

vendor farms:  
list developed and geo-coded by Bureau of Planning and Sustainability (Nov. 2008).

educational farms:  
list developed and geo-coded by Bureau of Planning and Sustainability (Nov. 2008).

zoning:  
maintained by Bureau of Planning (2008).  
excludes 'p' overlay zones.



**Portland custodian - private property**

- ▲ unknown
- ▲ 1
- ▲ 2 - 25
- ▲ 26 - 50
- ▲ 51 - 106

**Portland custodian - public property**

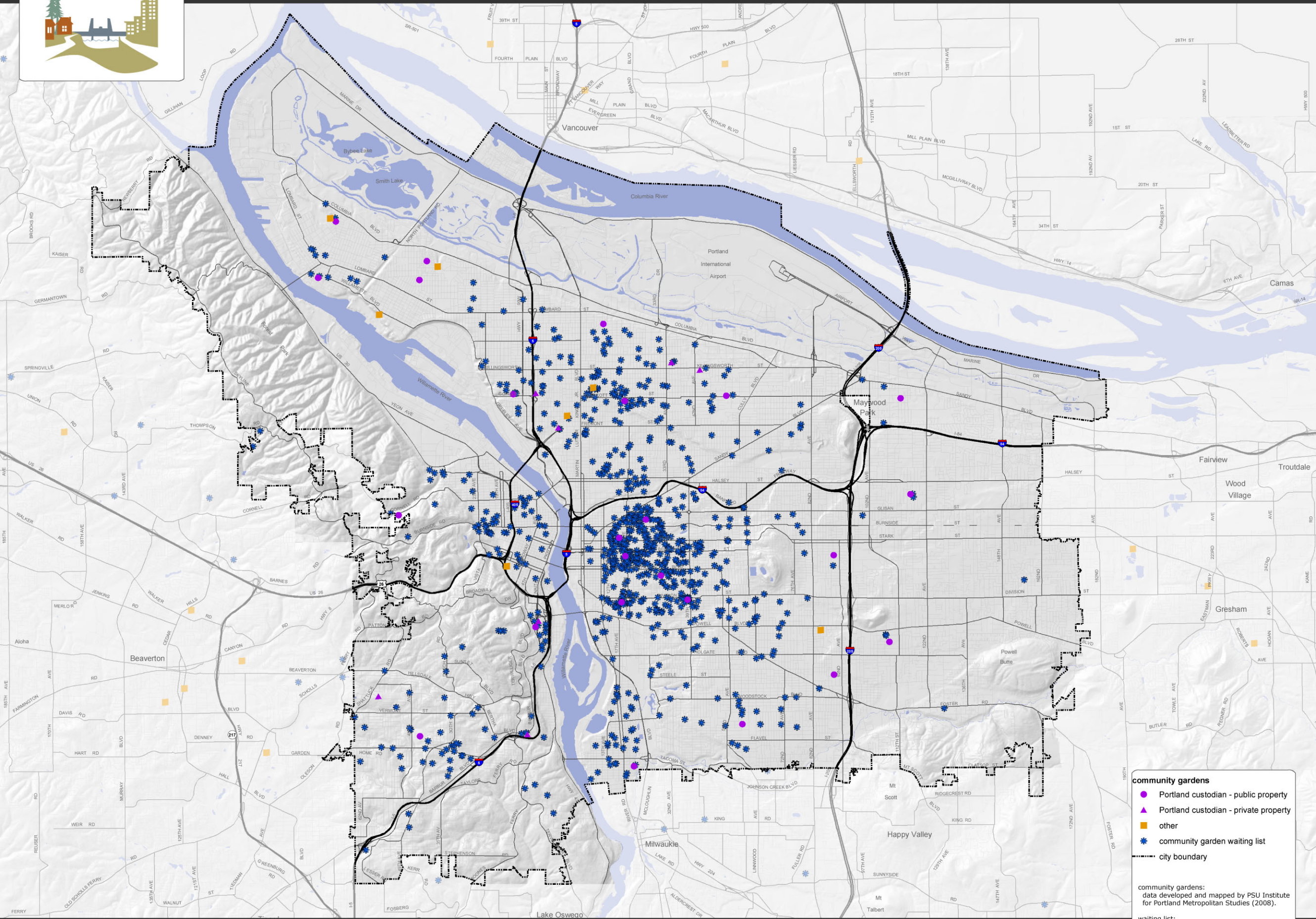
- unknown
- 1 - 25
- 26 - 50
- 51 - 75
- 76 - 83
- other

**walking distance**

- 1/2 mile
- 1 mile

--- city boundary

community gardens:  
data developed and mapped by PSU Institute for Portland Metropolitan Studies (2008)



- community gardens**
- Portland custodian - public property
  - ▲ Portland custodian - private property
  - other
  - ★ community garden waiting list
  - city boundary

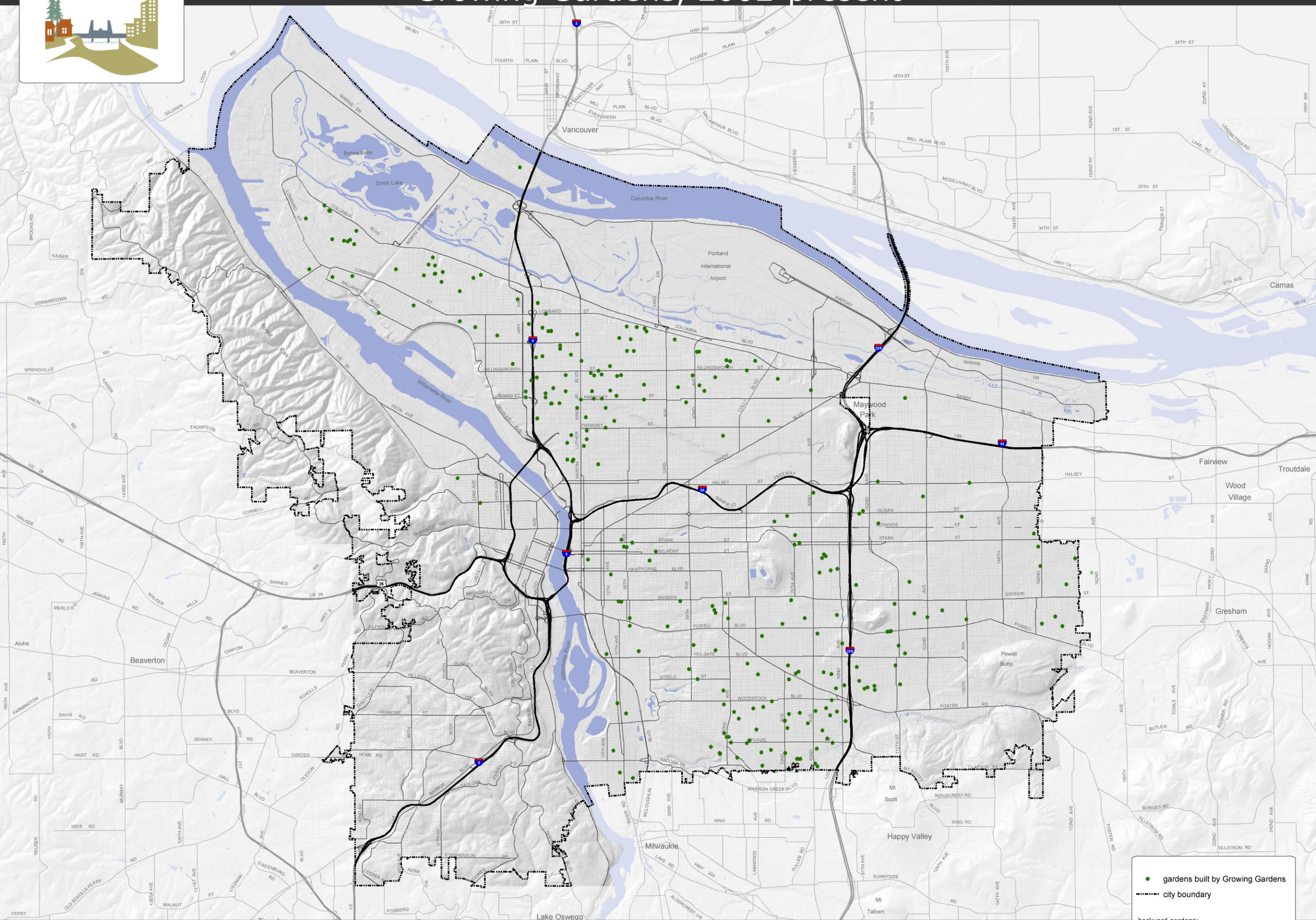
community gardens:  
data developed and mapped by PSU Institute for Portland Metropolitan Studies (2008).

waiting list:  
data provided by Portland Parks & Rec (Oct. 2008). Geocoded by Bureau of Planning.



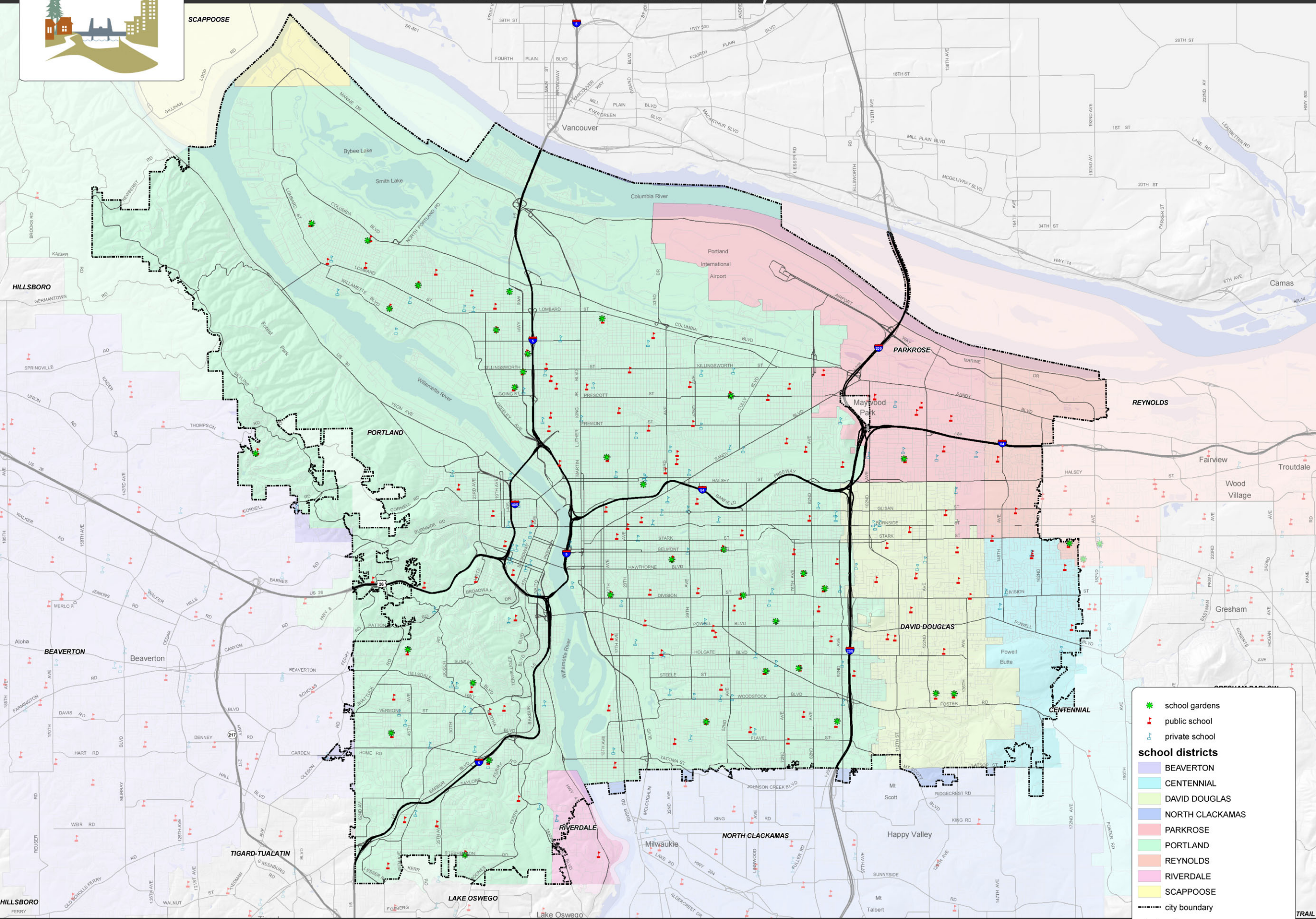


# Backyard Gardens built by Growing Gardens, 2002-present



● gardens built by Growing Gardens  
- - - city boundary

backyard gardens:  
Growing Gardens provided the addresses  
for gardens they've built for low-income  
Portlanders since 2002.



- school gardens
- public school
- private school

**school districts**

- BEAVERTON
- CENTENNIAL
- DAVID DOUGLAS
- NORTH CLACKAMAS
- PARKROSE
- PORTLAND
- REYNOLDS
- RIVERDALE
- SCAPPOOSE

city boundary

school gardens:  
data developed by Ecotrust Food and Farm Program (2007). Geocoded by Bureau of Planning.