

working for clean rivers



Sellwood Sanitary Sewer Extension Project E11162

Melanie Gualotunia, P.E. | NCS Program Manager | Bureau of Environmental Services
Joe Dvorak, P.E. | Division Manager | Bureau of Environmental Services
Item #269 | April 5, 2023



ENVIRONMENTAL SERVICES
CITY OF PORTLAND

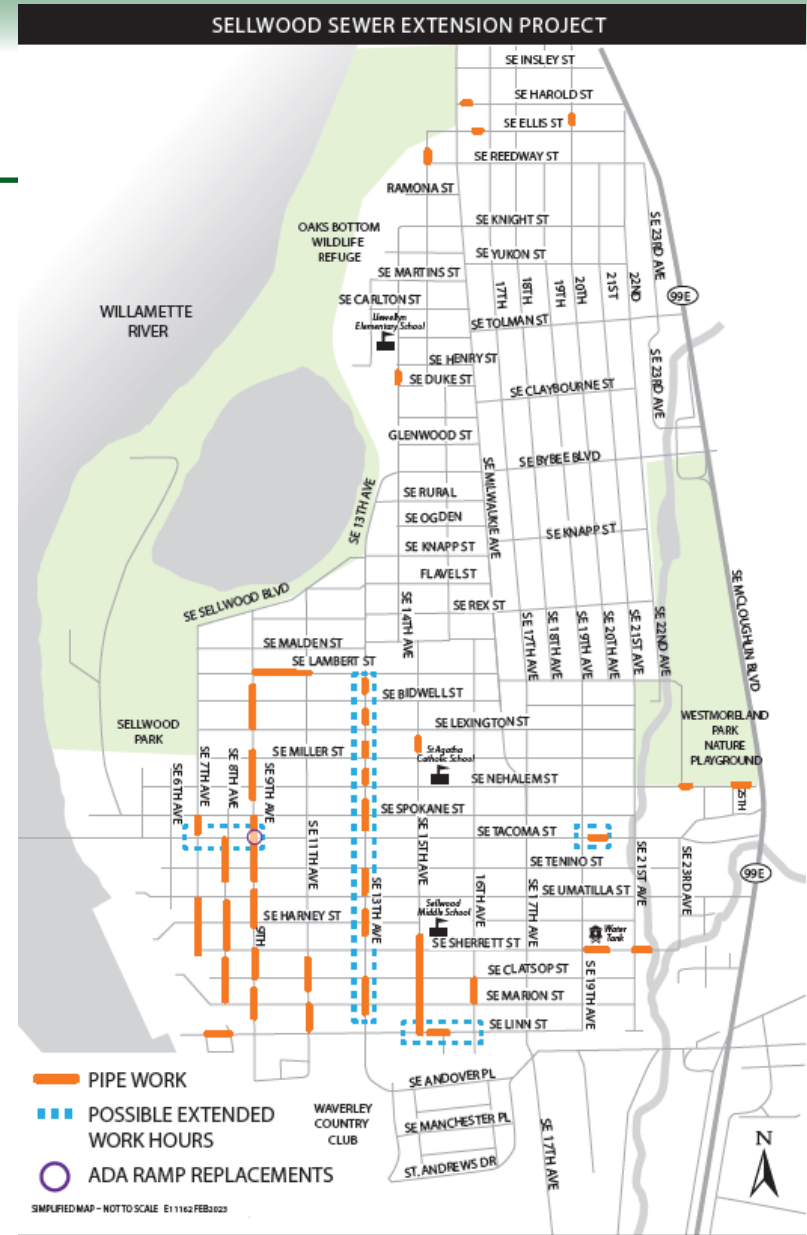
MINGUS MAPPS, COMMISSIONER
DAWN UCHIYAMA, INTERIM DIRECTOR



Project Overview

Sellwood Sanitary Sewer Extension Project

- ~7,200 feet of new 8" diameter mainline pipe
- ~3,300 feet of 6" diameter service laterals
- Provide municipal sewer service to 153 developed properties that currently utilize nonconforming and septic sewer connections.
- 1 Intersection - ADA Ramp Upgrade



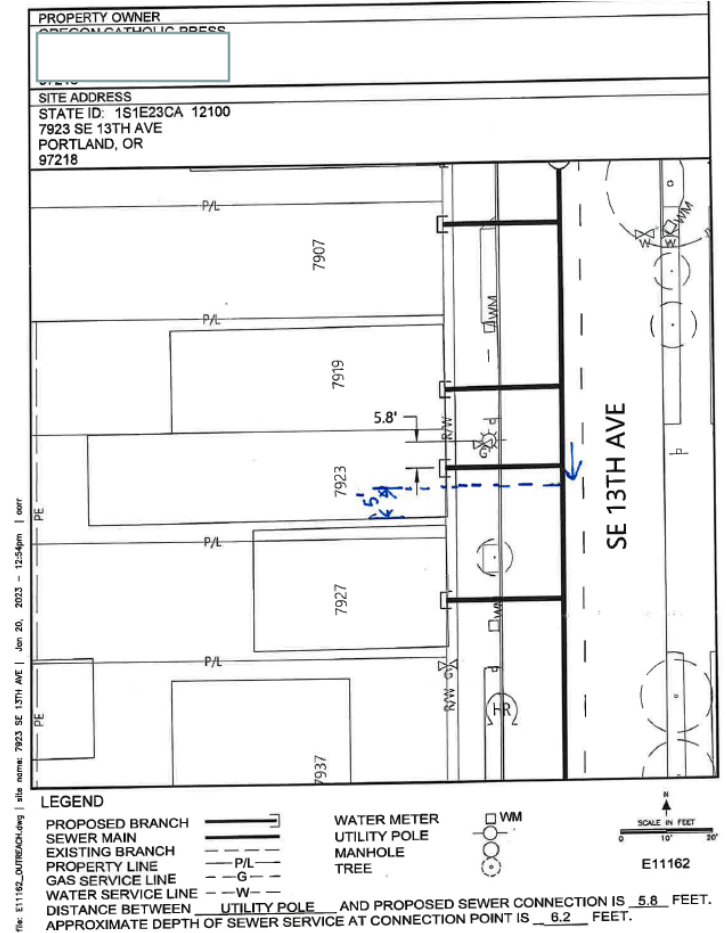
Construction Methods and Scope

- Open trench excavation
- Limited Trenchless Lateral Installation



Public Outreach & Impacts

- Extensive general outreach conducted via mailings, web, email, and social media
- Community workshops
- Extensive targeted outreach conducted directly with affected property owners
- Contract with JLA Public Involvement for General PI work



Connecting to the Public Sewer System

- NCS properties are required to connect within 180 days of notice of project completion (or 3 years for septic properties)
- Sewer Conversion Fees are due to the City upon connection
- Financial assistance programs and deferral options are available

- **Residential properties:** the sewer conversion charge is equal to the branch charge: \$8,421.
- **Non-residential properties:** the sewer conversion charge is calculated based on the area within 300 feet of the sewer line multiplied by the rate: simple = \$3.31 per ASF and complex = \$6.79 per ASF.



Engineer's Estimate & Schedule

Engineer's Estimate:

- \$7,400,000
- Moderate Confidence Level

Advertise Project:

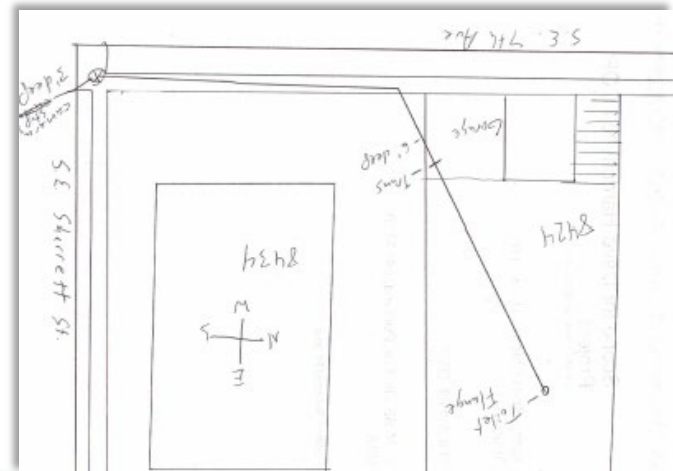
- June 2023

Begin Construction:

- September 2023

Construction Duration:

- ~ 2 Years



Questions?

