



# RESIDENTIAL CURBSIDE WASTE COLLECTION RATES BRIEFING

Planning Commission

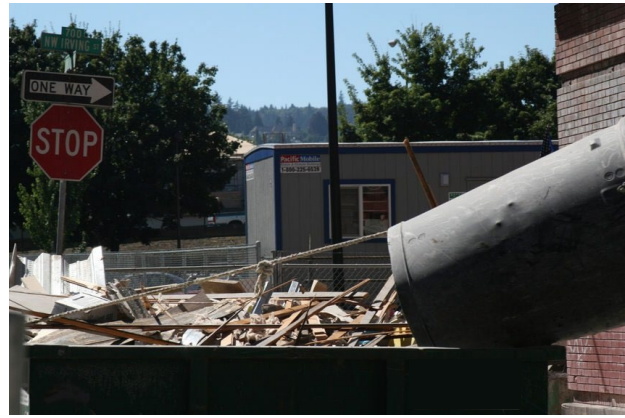
April 25, 2023

Eben Polk and Quintin Bauer



THE BUREAU OF  
**PLANNING &  
SUSTAINABILITY**

# Where does Portland's waste come from?



# Background



We manage the residential collection system to:

- Support recycling and waste reduction
- Reduce environmental / climate footprint
- Deliver financially sustainable collection service with good jobs

Today's focus:

Annual rate review for the residential collection system (Single family and small plexes only)

# Rate Review Process

- Tight timeline driven by timing of the process from February through May, annually.
- Ongoing monitoring
- Our contracted CPA reviews hauler financial reports
- Rates cover average cost of service + target operating margin + franchise fee
- Code and administrative rule require a target operating margin
- Waste reduction policy





# Current Monthly Rates

Primary Garbage Service Levels	Rate FY22-23	% Households Served*
35-Gallon - Every 4 Weeks	\$27.35	5%
20-Gallon	\$30.15	5%
35-Gallon	\$34.90	41%
60-Gallon	\$39.45	34%
90-Gallon	\$45.70	7%

*\*About 9% of customers subscribe to other service levels*



# Key Rate Factors



- Inflation
- Fuel
- Wages
- Disposal fees / recycling processing costs
- BPS Franchise Fee

# Next Steps

- May 9: PC Hearing on Final Rates
- May 24: City Council First Hearing
- July 1: Rates take effect





## THE BUREAU OF **PLANNING** & **SUSTAINABILITY**

# Questions?

[Eben.polk@portlandoregon.gov](mailto:Eben.polk@portlandoregon.gov)  
[Quintin.bauer@portlandoregon.gov](mailto:Quintin.bauer@portlandoregon.gov)

VISIT US ONLINE [portland.gov/bps](http://portland.gov/bps)

The City of Portland is committed to providing meaningful access. To request translation, interpretation, modifications, accommodations, or other auxiliary aids or services, contact 503-823-7700, Relay: 711.

Traducción e Interpretación | Biên Dịch và Thông Dịch | अनुवादन तथा व्याख्या | 口笔译服务 |  
Устный и письменный перевод | Turjumaad iyo Fasiraad | Письмовий і усний переклад |  
Traducere și interpretariat | Chiaku me Awewen Kapas | 翻訳または通訳 | ການແປພາສາ ຫຼື ການ  
ຮອດສູນ | الترجمة التحريرية أو الشفهية | [Portland.gov/bps/accommodation](http://Portland.gov/bps/accommodation)