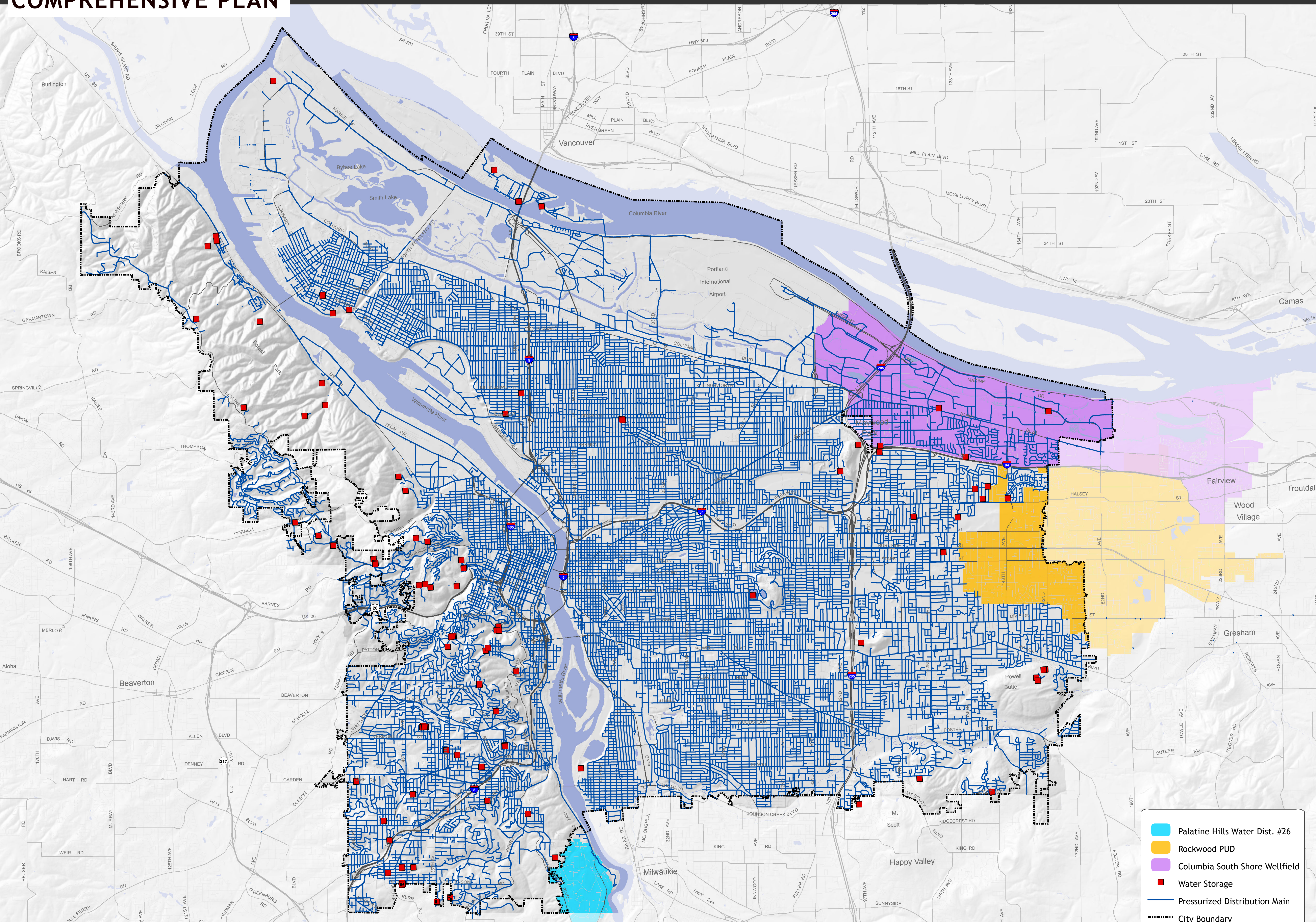


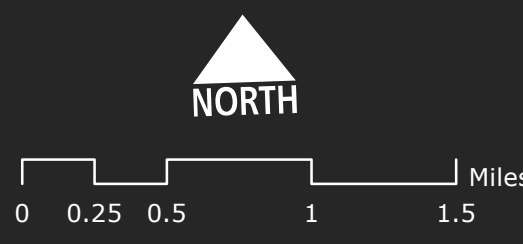
Water System - INF-14

BUILDABLE LANDS

COMPREHENSIVE PLAN



- Palatine Hills Water Dist. #26
- Rockwood PUD
- Columbia South Shore Wellfield
- Water Storage
- Pressurized Distribution Main
- City Boundary



Bureau of Planning and Sustainability
Innovation. Collaboration. Practical Solutions.
City of Portland, Oregon
Sam Adams, Mayor • Susan Anderson, Director



June 5, 2012 City of Portland | Bureau of Planning and Sustainability | Geographic Information System
The information on the map was derived from digital data-bases on the City of Portland, Bureau of Planning and Sustainability GIS. Care was taken in the creation of this map but it is provided "as is". The City of Portland cannot accept any responsibility for error, omissions, or positional accuracy, and therefore, there are no warranties which accompany this product. However, notification of any errors will be appreciated.
This work was supported in part by a periodic review grant from the Oregon Department of Land Conservation and Development.

Water System: Developed and maintained by City of Portland, Bureau of Water Works (May 2012).