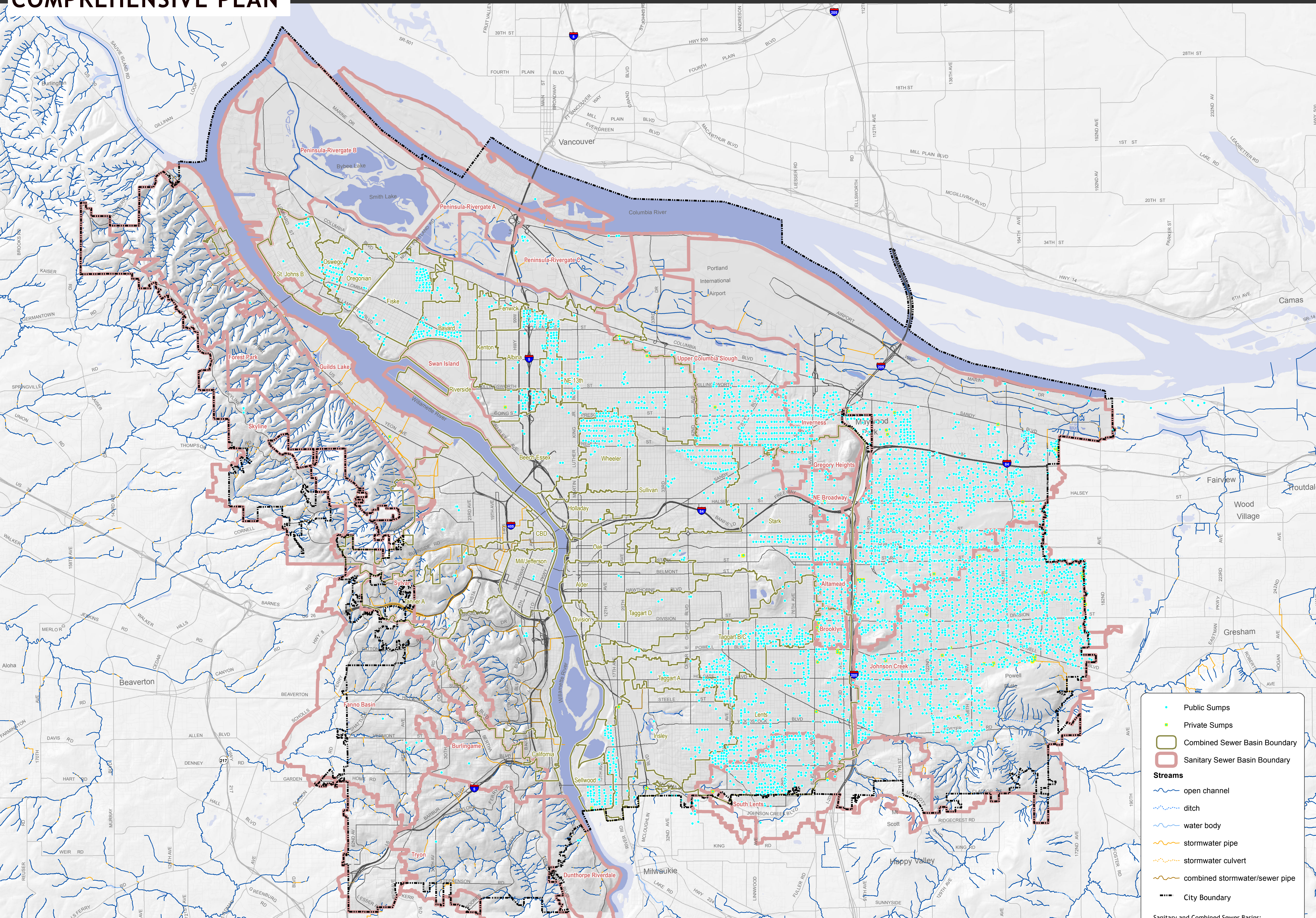


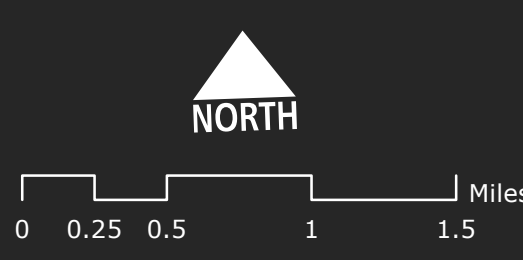
COMPREHENSIVE PLAN



- Public Sumps
- Private Sumps
- Combined Sewer Basin Boundary
- Sanitary Sewer Basin Boundary
- Streams**
 - open channel
 - ditch
 - water body
 - stormwater pipe
 - stormwater culvert
 - combined stormwater/sewer pipe
- City Boundary

Sanitary and Combined Sewer Basins:
Maintained by Bureau of Environmental
services (Sept. 2008)

Streams: Developed by Bureau of Planning
and Sustainability from 2009 LiDAR data.



Bureau of Planning and Sustainability
Innovation. Collaboration. Practical Solutions.
City of Portland, Oregon
Sam Adams, Mayor • Susan Anderson, Director



June 5, 2012 City of Portland | Bureau of Planning and Sustainability | Geographic Information System
The information on the map was derived from digital data-bases on the City of Portland, Bureau of Planning and Sustainability GIS. Care was taken in the creation of this map but it is provided "as is". The City of Portland cannot accept any responsibility for error, omissions, or positional accuracy, and therefore, there are no warranties which accompany this product. However, notification of any errors will be appreciated.
This work was supported in part by a periodic review grant from the Oregon Department of Land Conservation and Development.