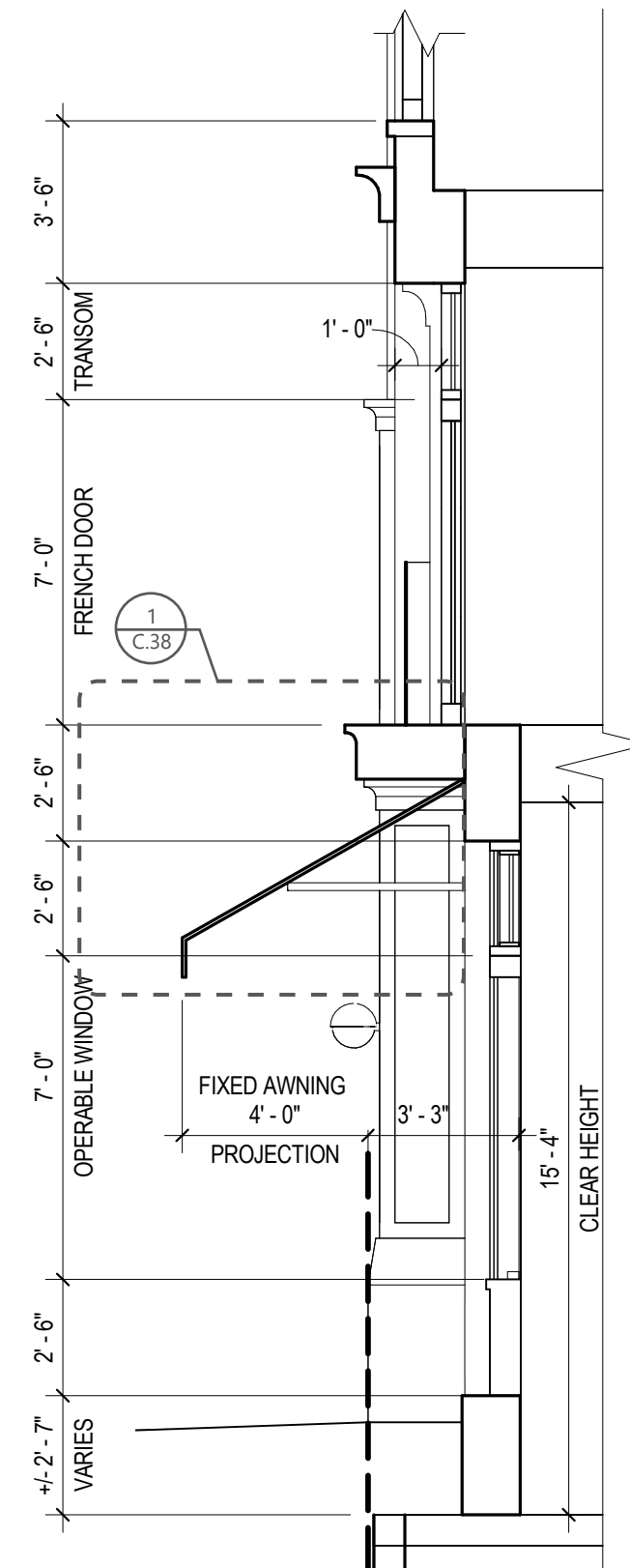


THIRD FLOOR
EL: +28'-6"

SECOND FLOOR
EL: +17'-0"

FIRST FLOOR
EL: +0'-0"



TYPICAL BAY SECTION - B

DETAILS (1880 NW FLANDERS ST.)

SCALE: 3/16" = 1'-0" & 1/4" = 1'-0"

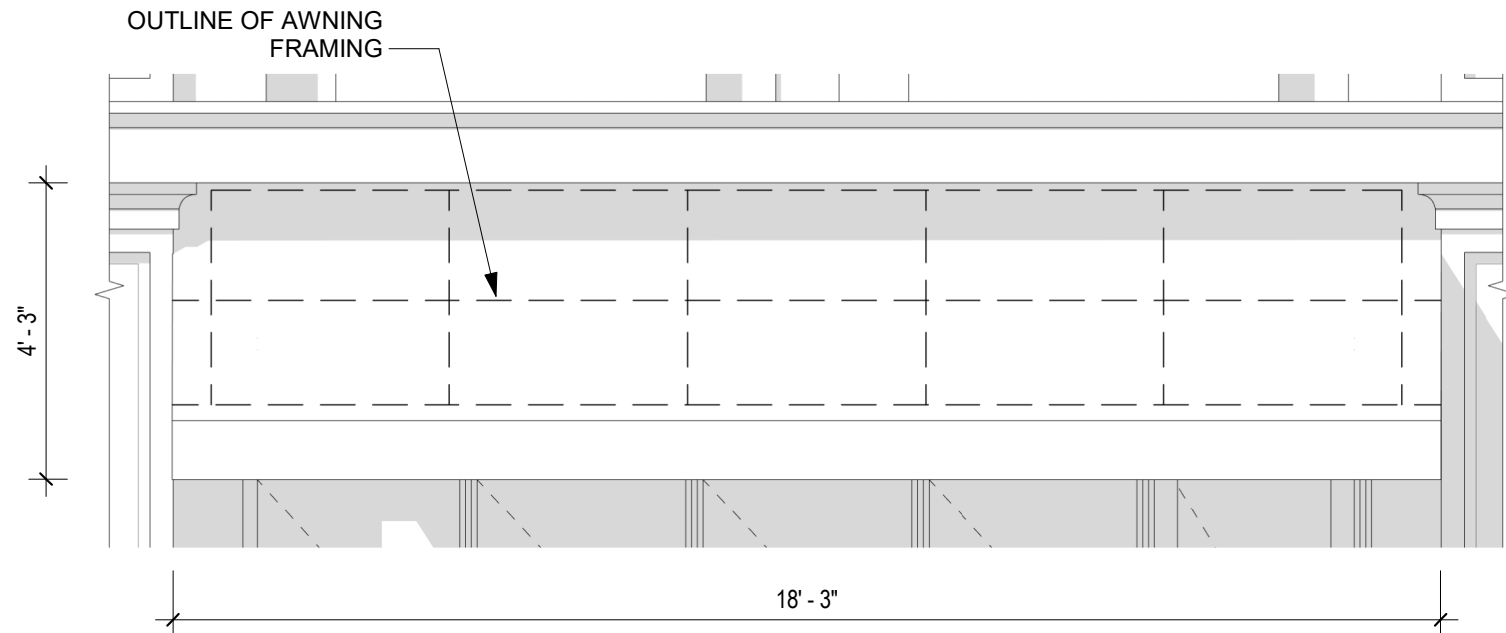
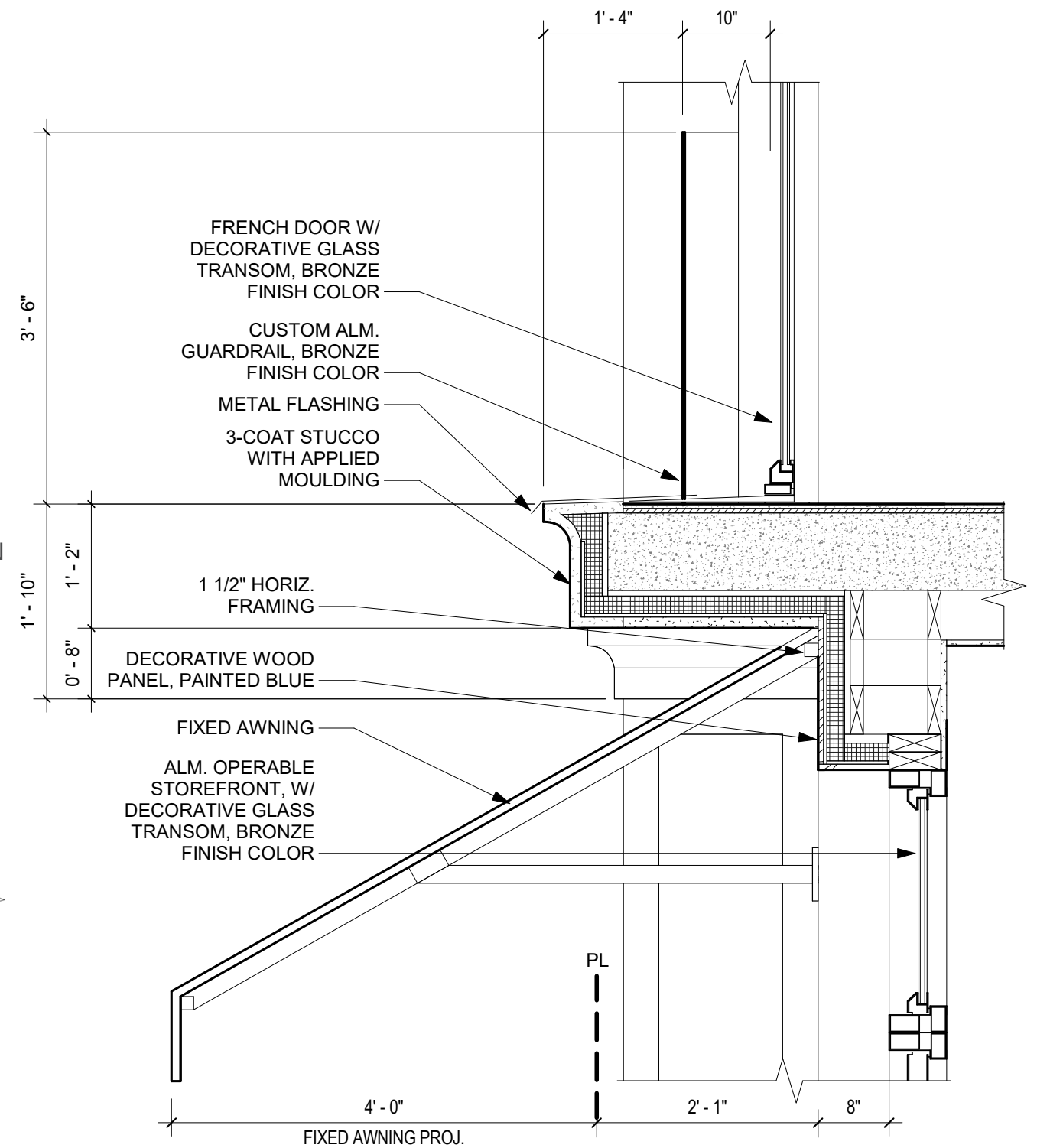
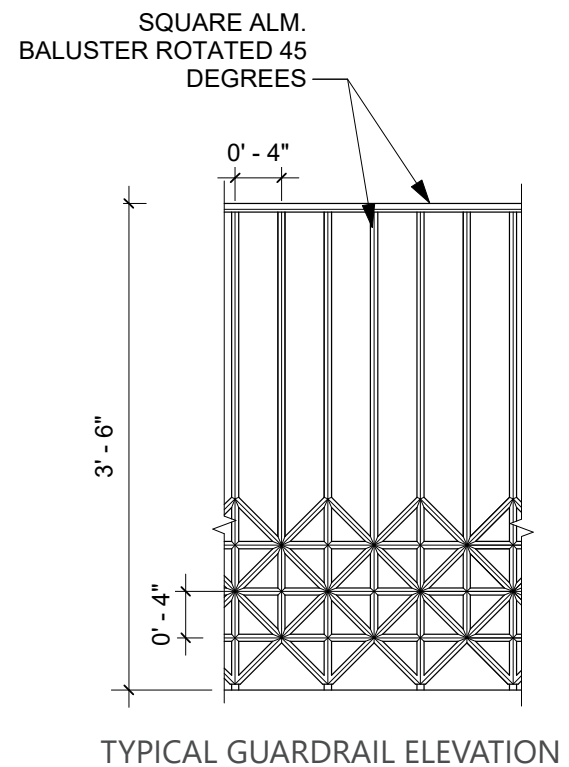
C.38



1819 NW EVERETT STREET, 1880 NW FLANDERS STREET - PORTLAND, OR 97209
03.13.2023 | LU 22-204531 HR



AREA FOR CITY STAMP



TYPICAL AWNING ELEVATION

FIXED AWNING SECTION

DETAILS (1880 NW FLANDERS ST.)

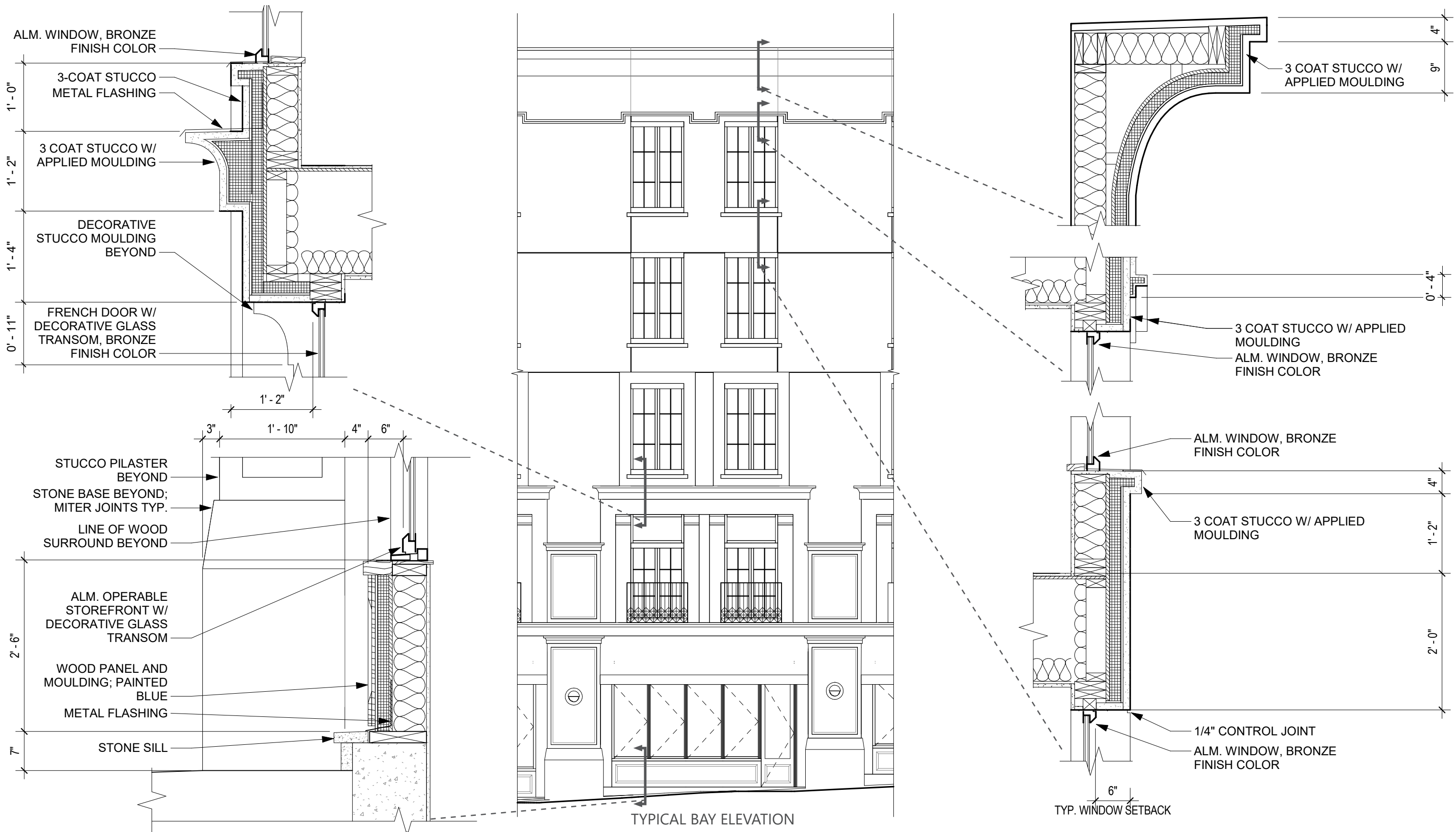
| SCALE: 3/8" = 1'-0" & 3/4" = 1'-0"

C.39



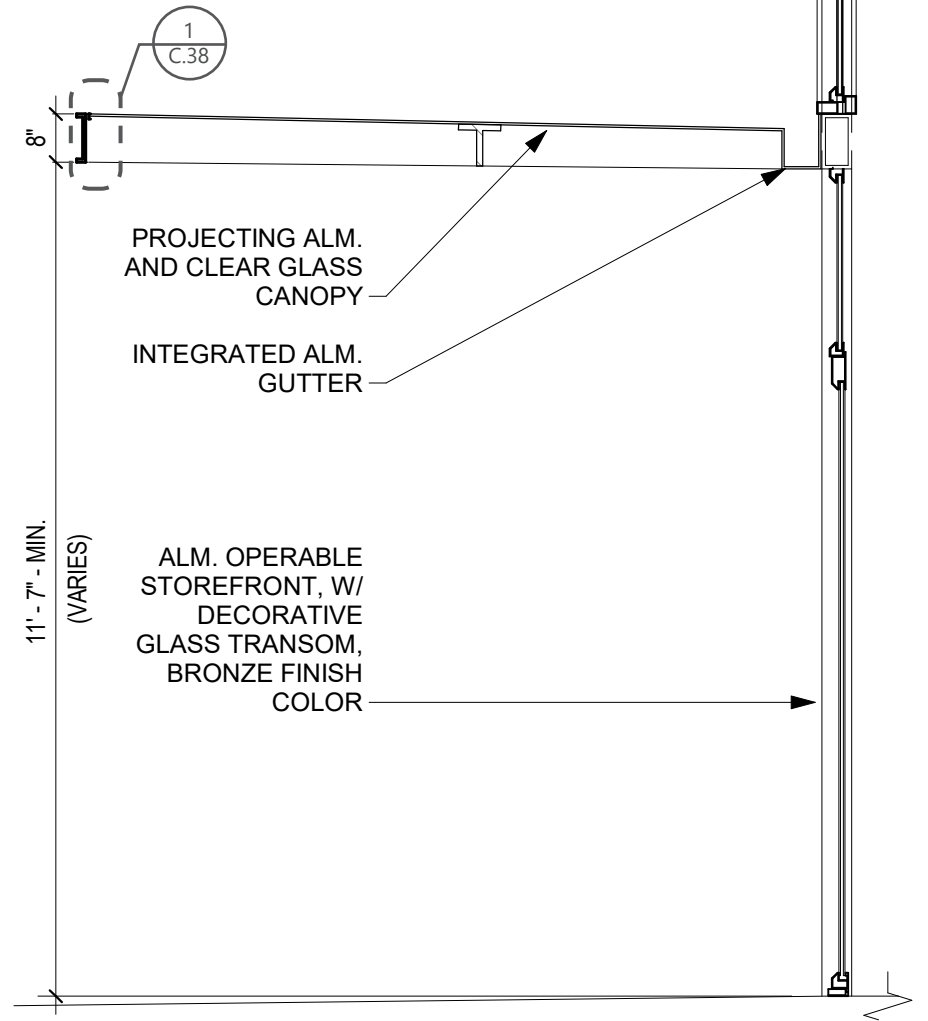
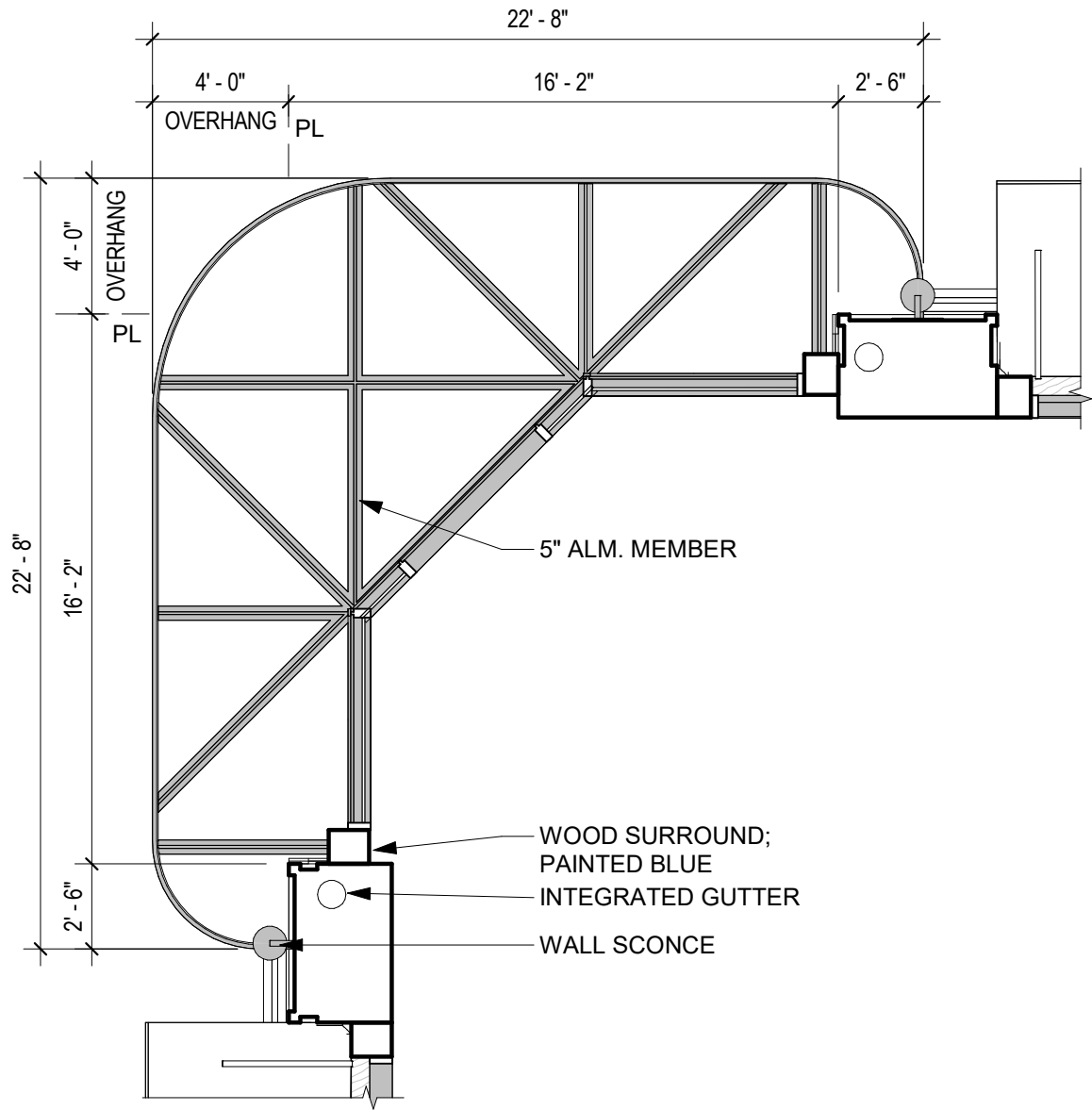
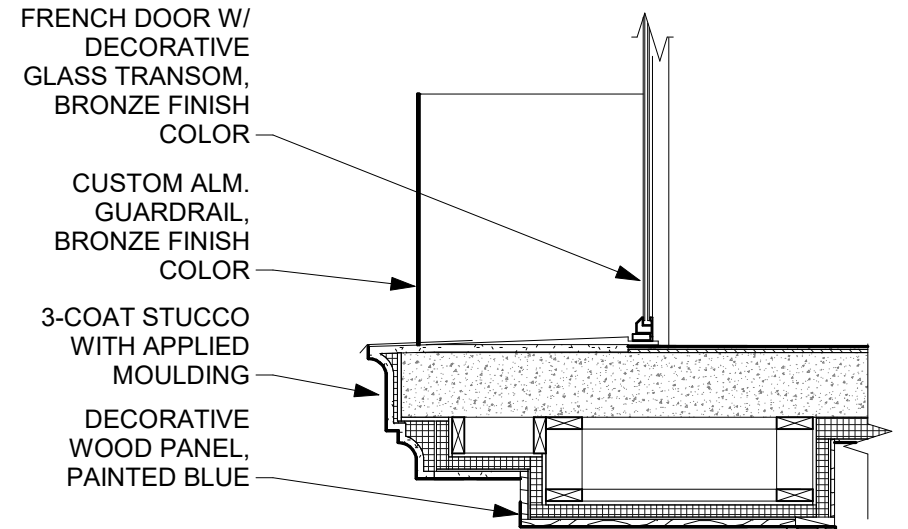
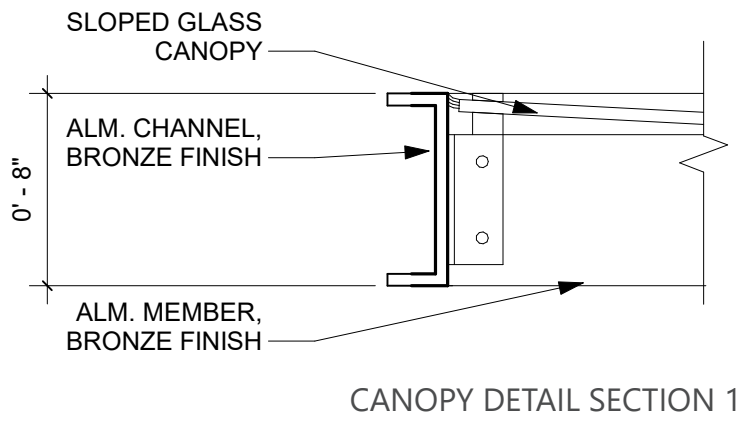
1819 NW EVERETT STREET, 1880 NW FLANDERS STREET - PORTLAND, OR 97209
03.13.2023 | LU 22-204531 HR

AREA FOR CITY STAMP



DETAILS (1880 NW FLANDERS ST.)

| SCALE: 1/8" = 1'-0" & 3/4" = 1'-0"



DETAILS (1880 NW FLANDERS ST.)

| SCALE: 3/16" = 1'-0", 3/8" = 1'-0", & 1-1/2" = 1'-0"



AREA FOR CITY STAMP