



[Home](#) / [Browse Council Documents](#)

756-2022

Communication

Request of Jessie Burke to address Council regarding Steel Bridge Skatepark

Placed on File

A brief description of Communication: Steel Bridge Skatepark

Agenda Items

756 Communications in [September 14, 2022 Council Agenda](#)

Placed on File

Requested Agenda Type

Communications

Date and Time Information

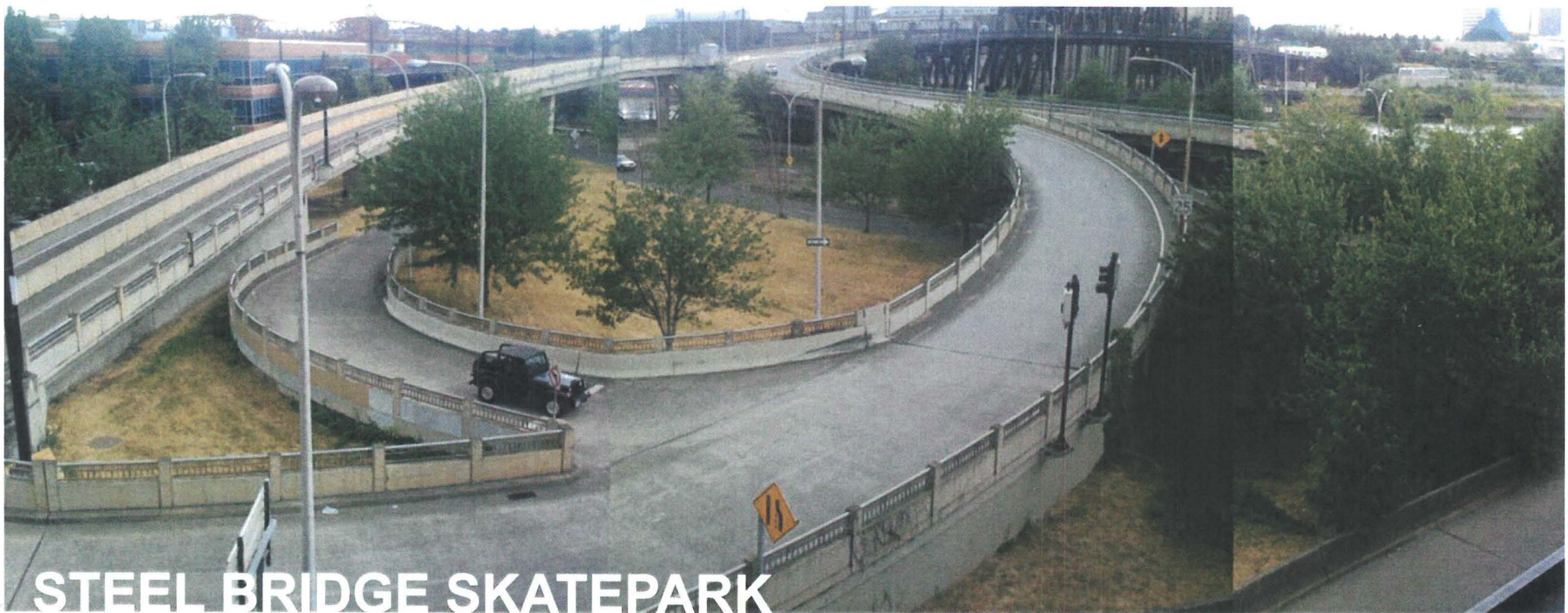
Requested Council Date

September 14, 2022



STEEL BRIDGE SKATEPARK

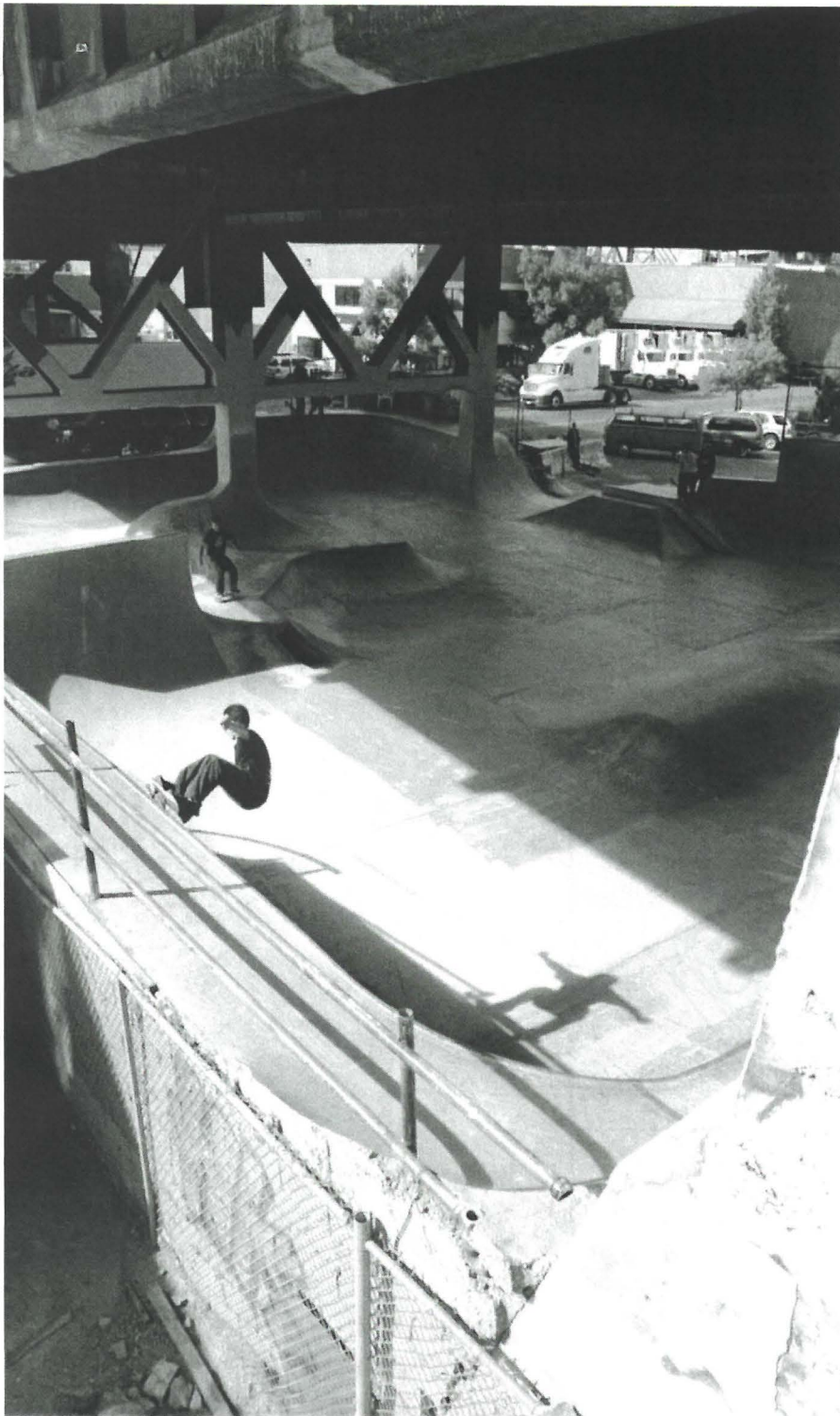




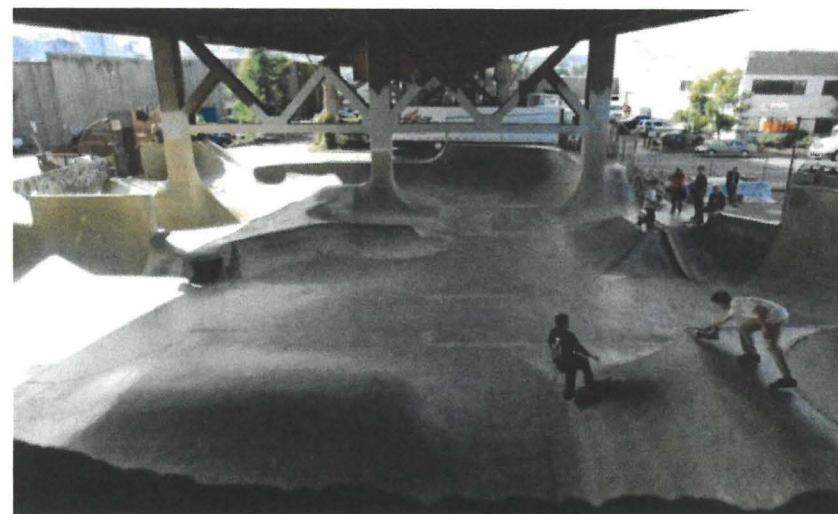
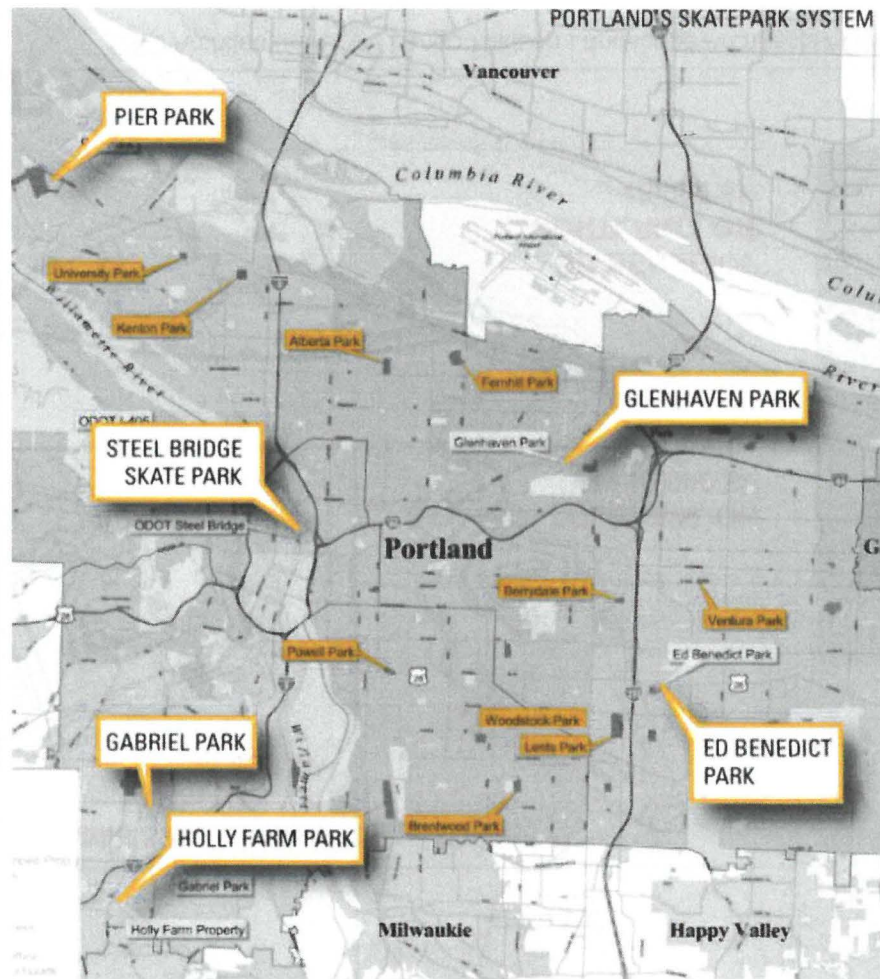
STEEL BRIDGE SKATEPARK

City of Portland, Portland Parks & Recreation

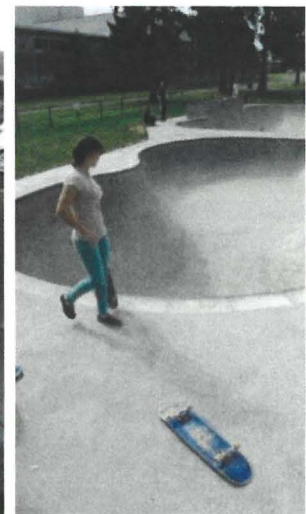
DAO Architecture LLC / Lango Hansen Landscape Architects / Grindline Skateparks, Inc.



City of Portland, Portland Parks & Recreation



DAO Architecture LLC / Lango Hansen Landscape Architects / Grindline Skateparks, Inc.



**STEELBRIDGE SKATEPARK
PORTLAND, OR
33,000 SF SKATABLE**

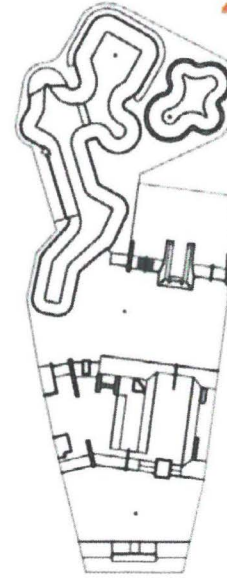
22,000 SF PEDESTRIANS
8,000 SF GREENSPACE
63,000 SF TOTAL



**WILMINGTON, OH
15,000 SF**



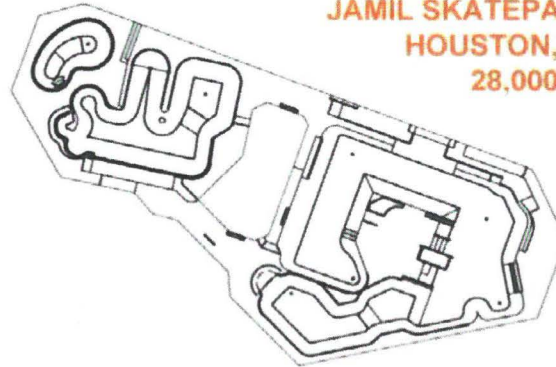
**BATTLEGROUND, WA
27,000 SF**



**ST HELENA, CA
20,000 SF**



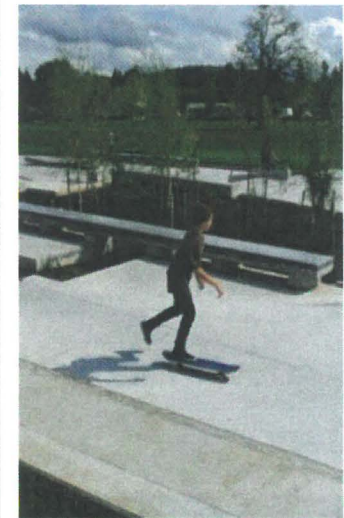
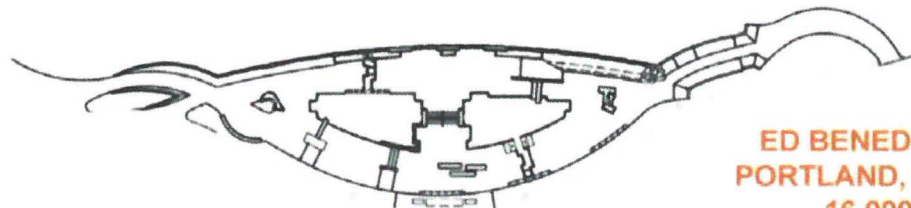
**JAMIL SKATEPARK
HOUSTON, TX
28,000 SF**



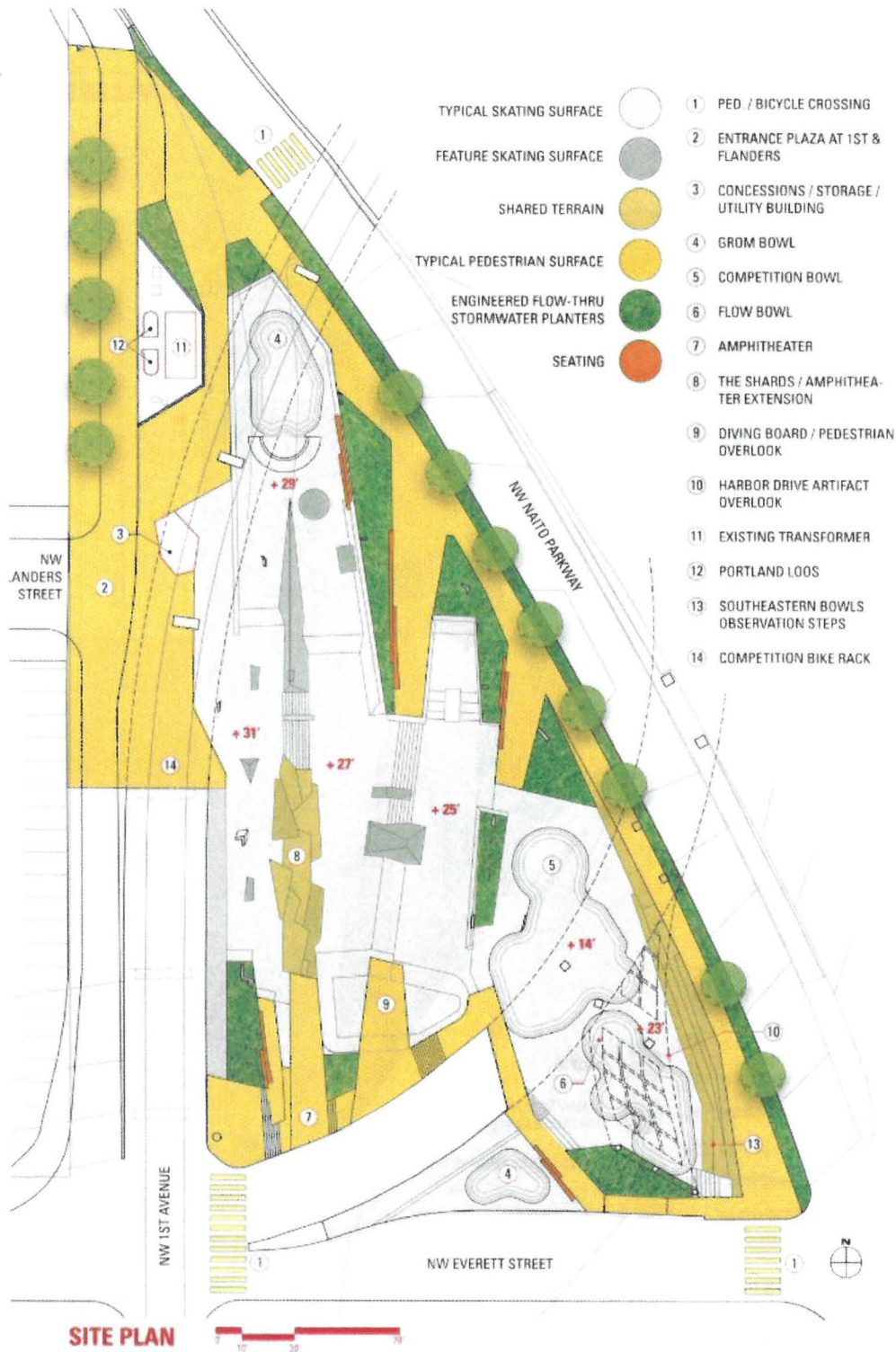
**COLERAIN, OH
10,000 SF**



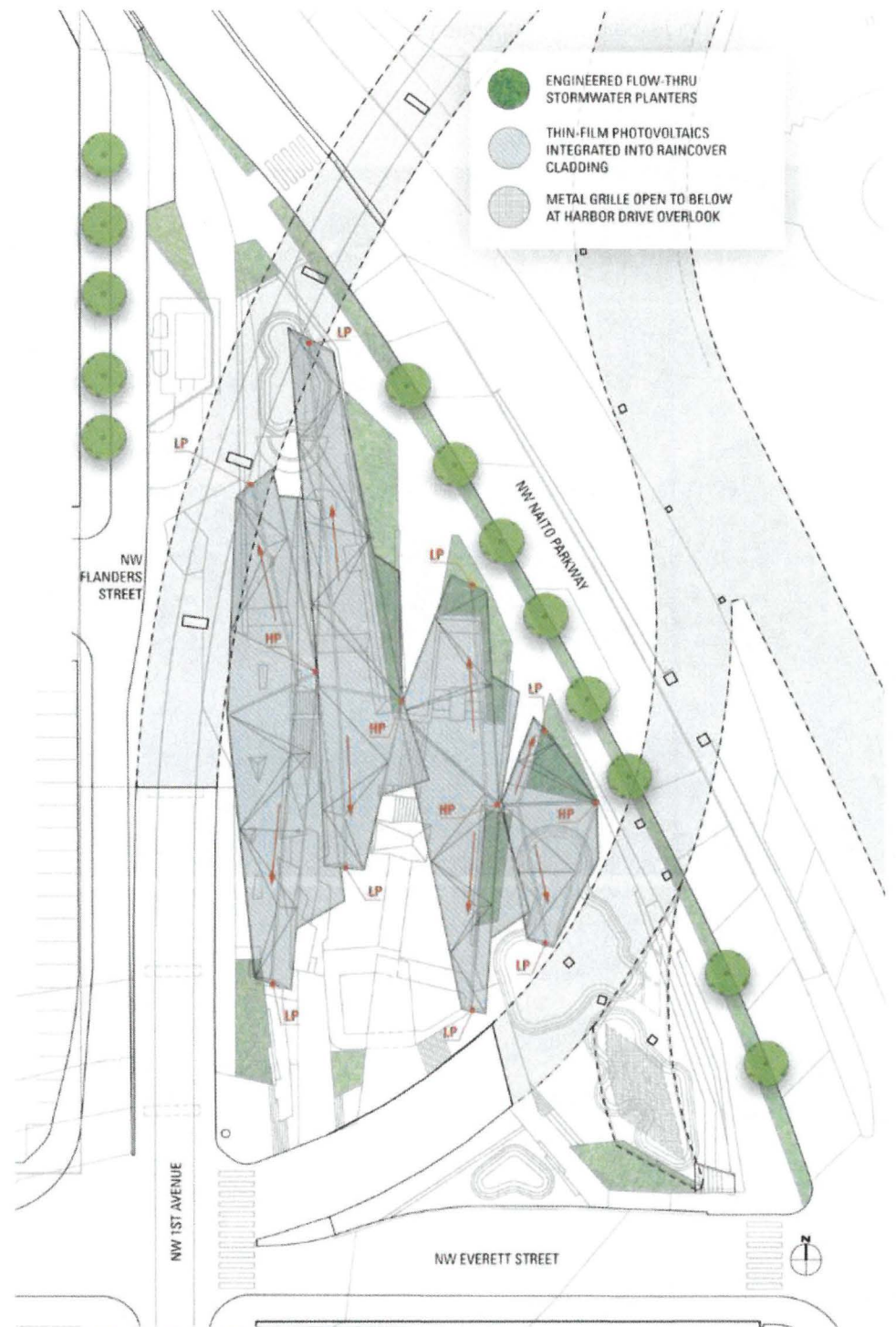
**ED BENEDICT
PORTLAND, OR
16,000 SF**



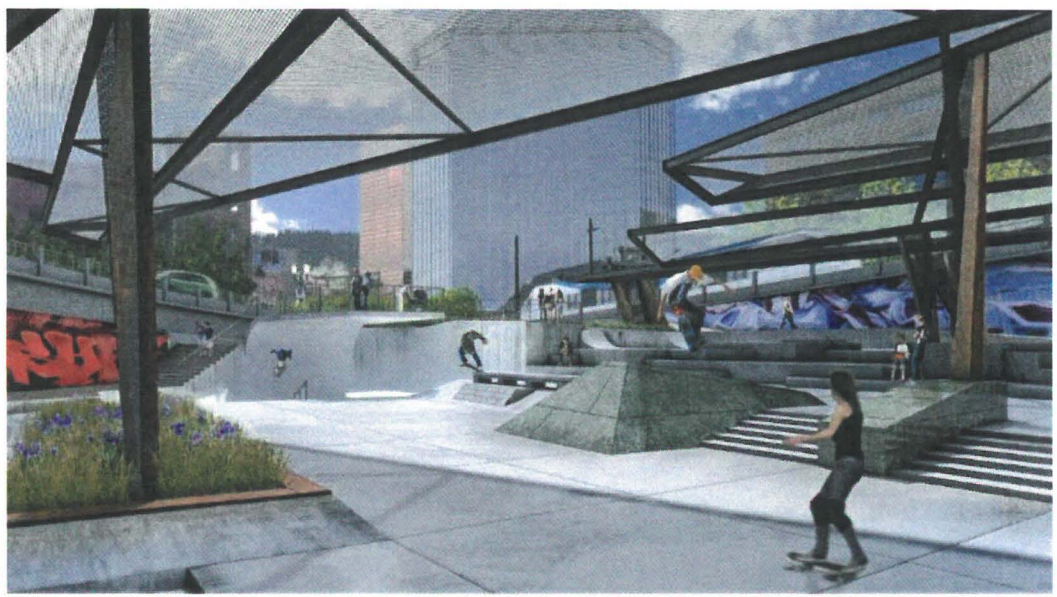
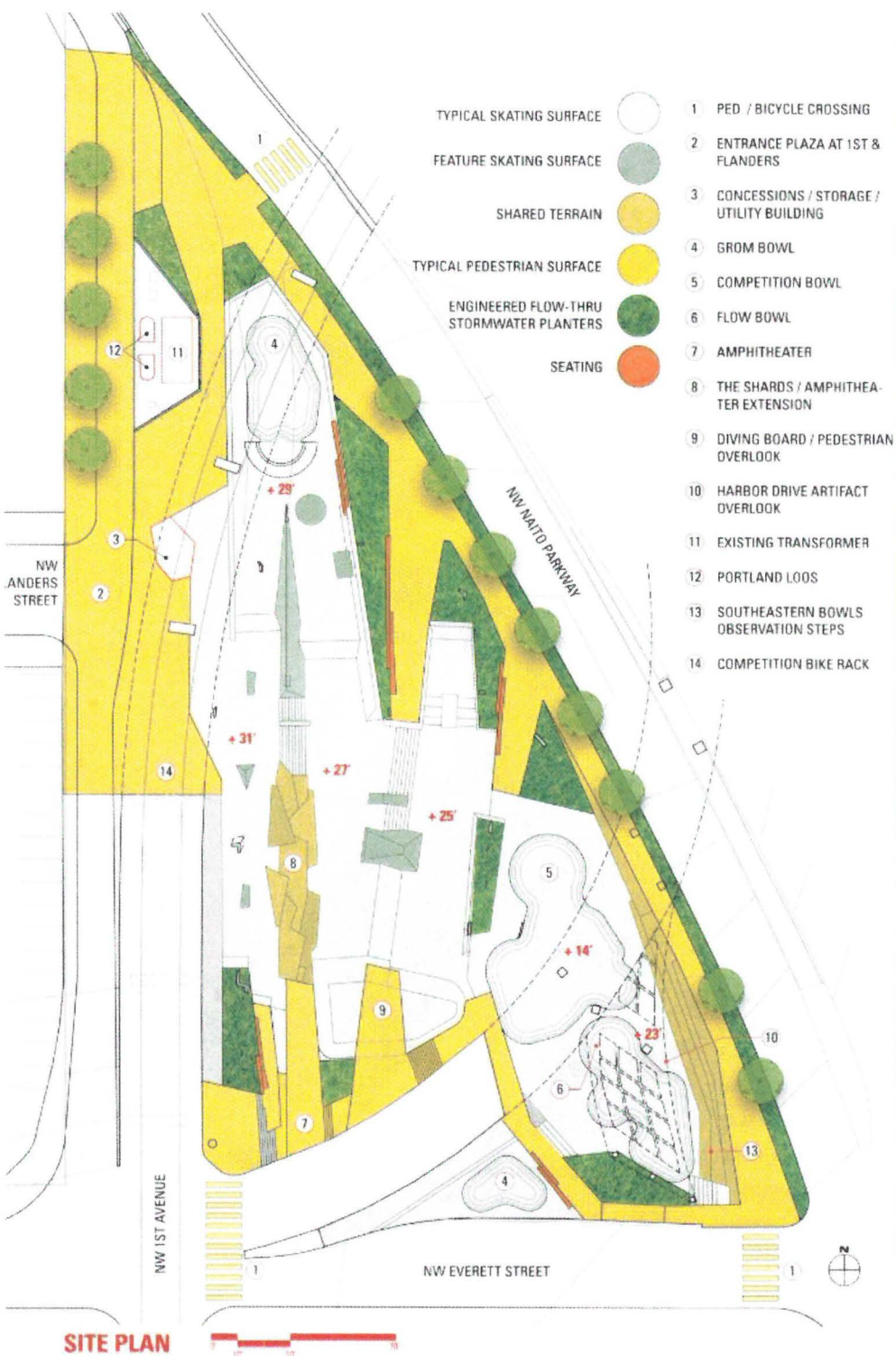
STEEL BRIDGE SKATEPARK

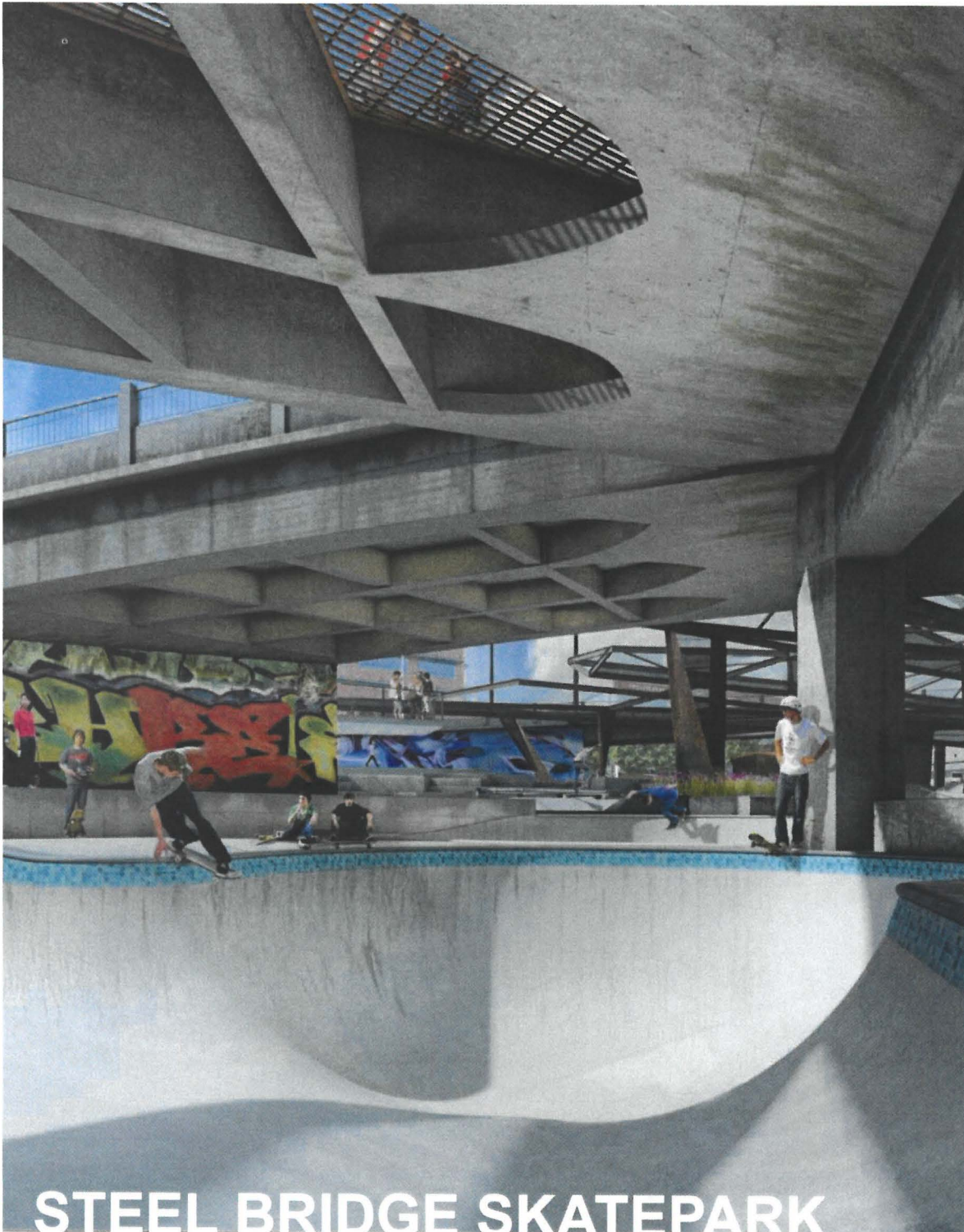


SITE PLAN



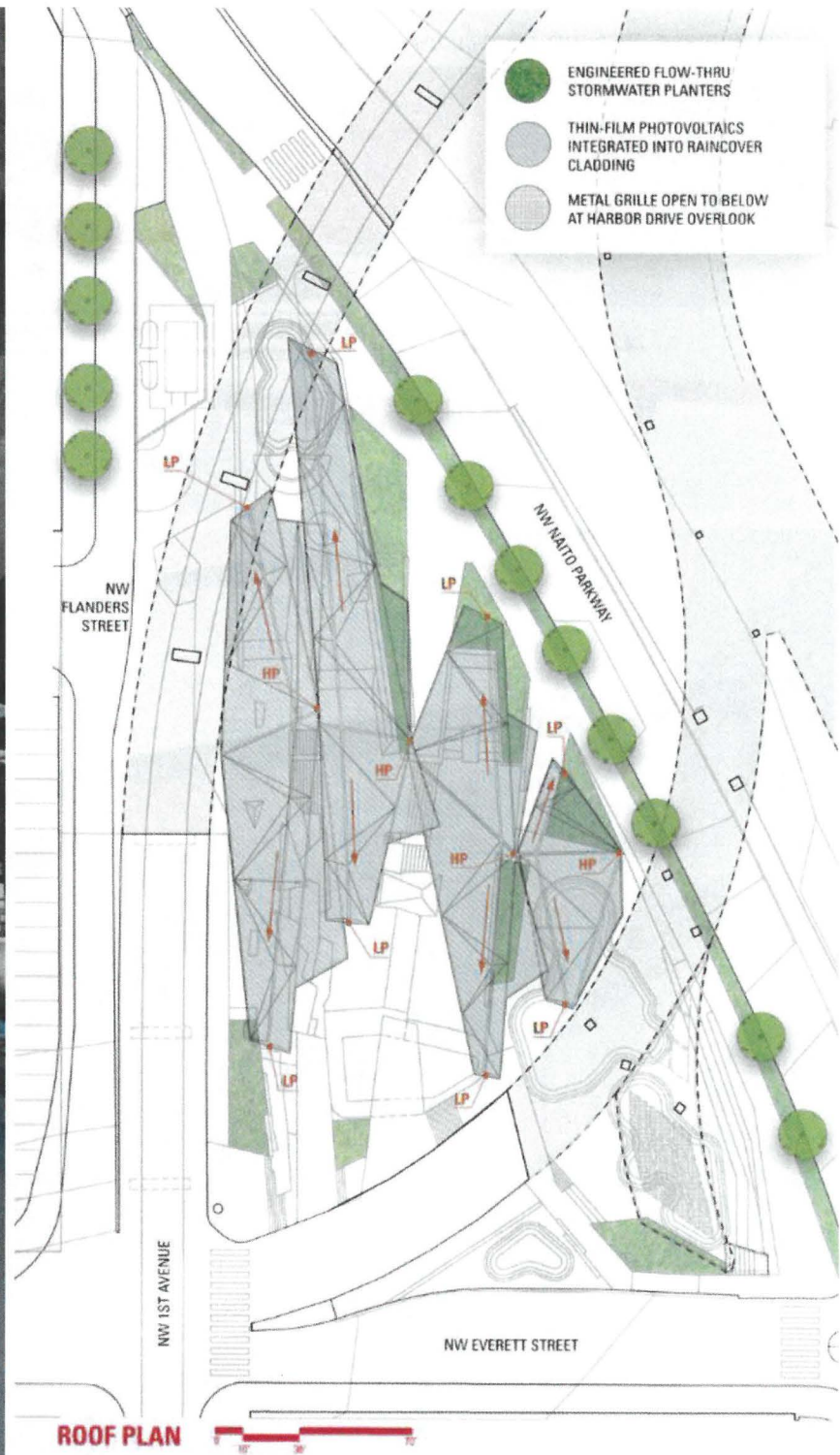
ROOF PLAN



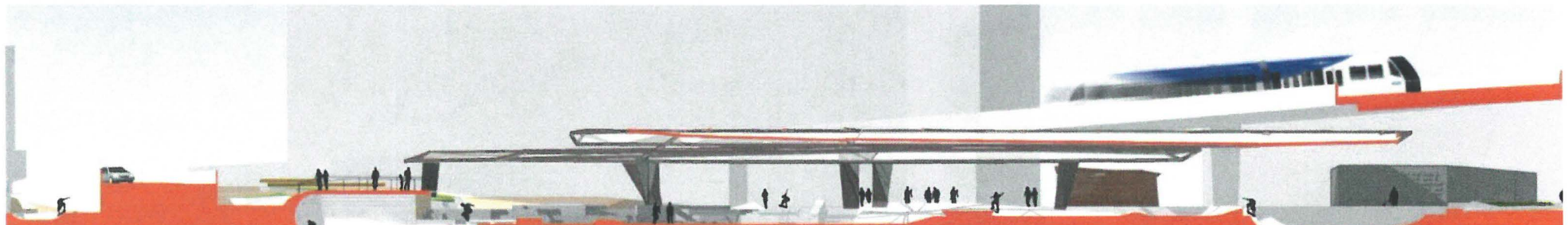
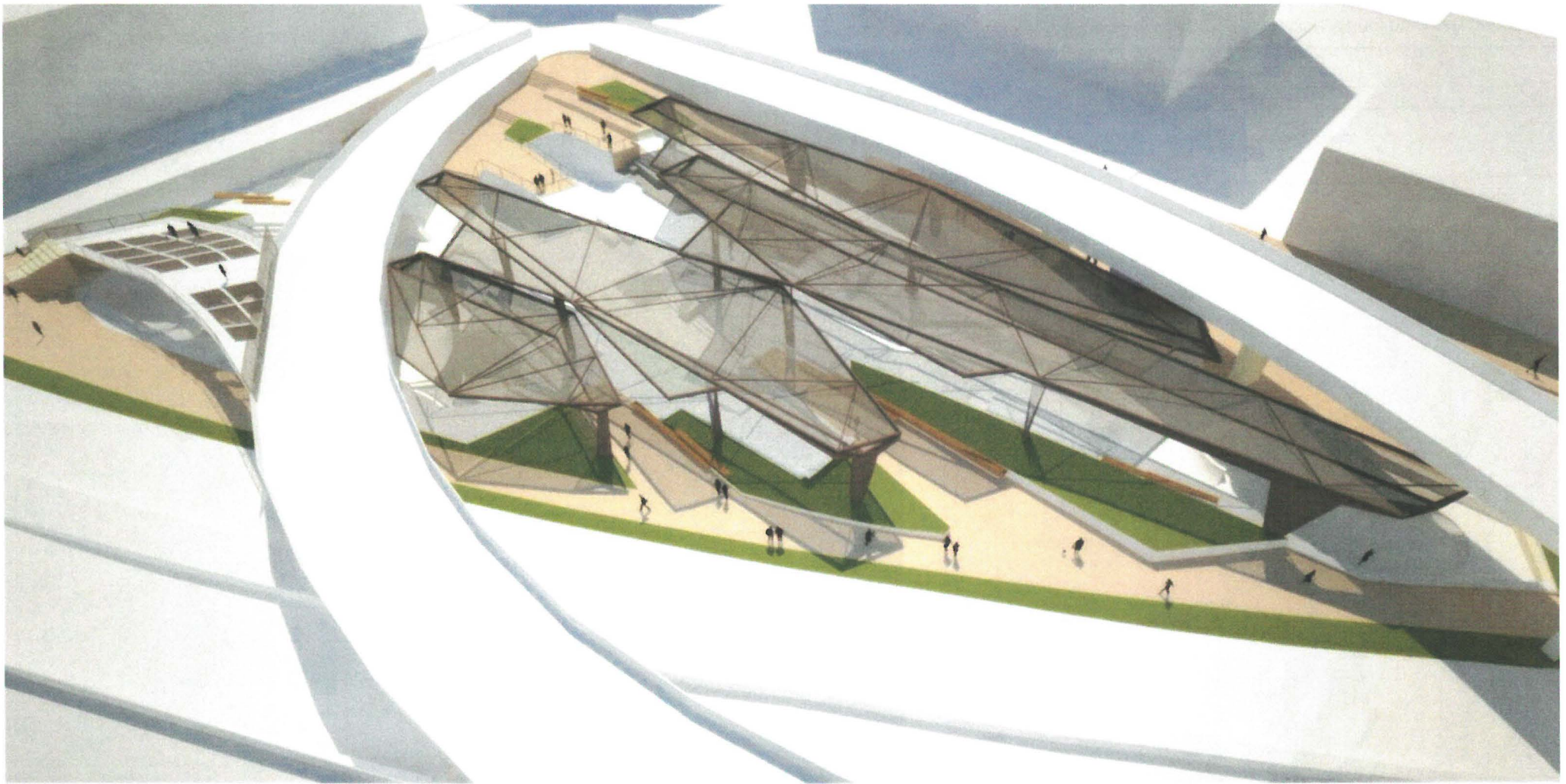


STEEL BRIDGE SKATEPARK

City of Portland, Portland Parks & Recreation



DAO Architecture LLC / Lango Hansen Landscape Architects / Grindline Skateparks, Inc.



LOWER GROM BOWL DIVING BOARD TRAVERSING STREETS UPPER GROM BOWL

STEEL BRIDGE SKATEPARK

City of Portland, Portland Parks & Recreation

DAO Architecture LLC / Lango Hansen Landscape Architects / Grindline Skateparks, Inc.



UPPER GROM BOWL

TRAVERSING STREETS

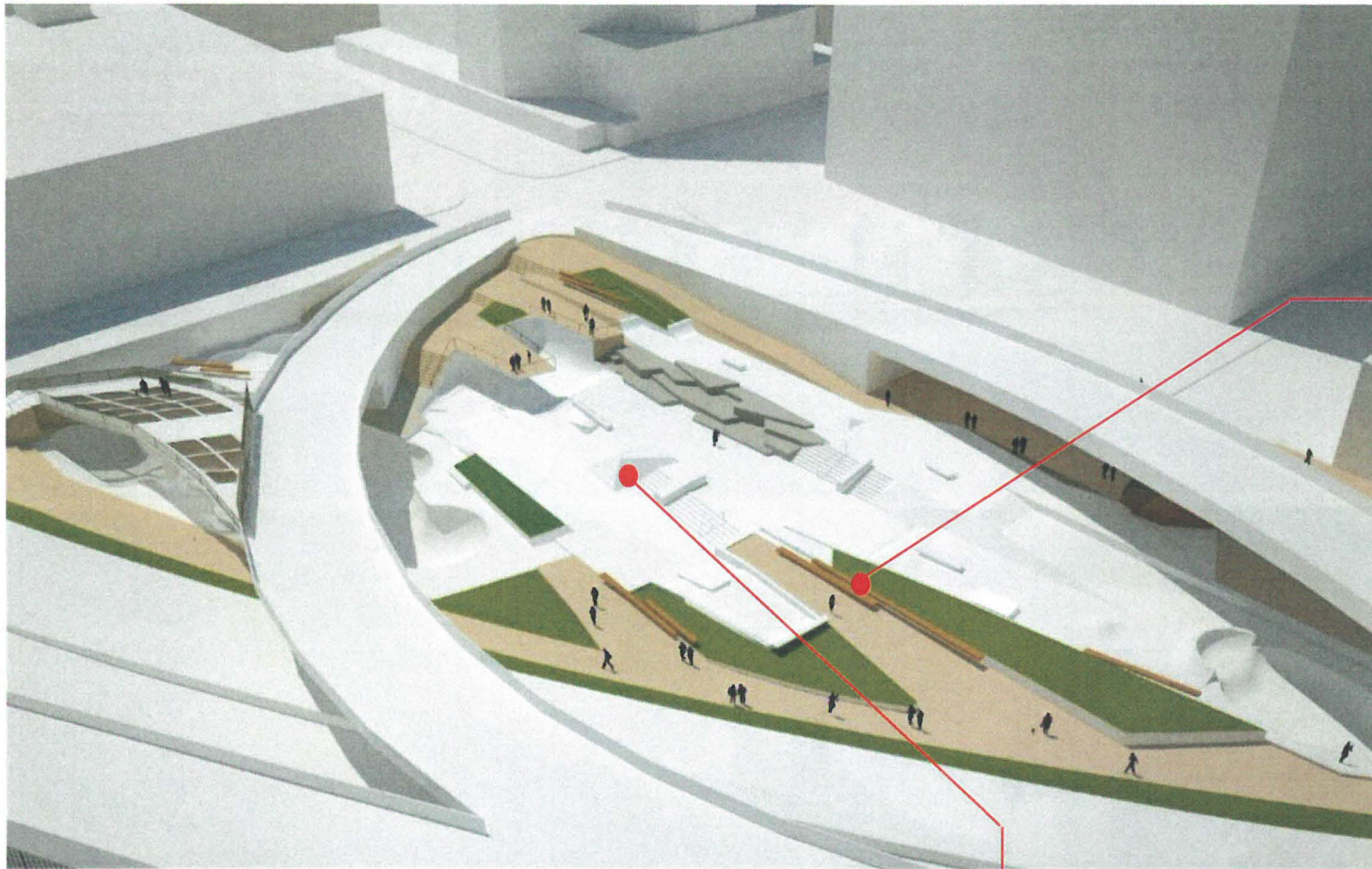
COMPETITION BOWL

FLOW BOWL
(RAMP OVERLOOK ABOVE)

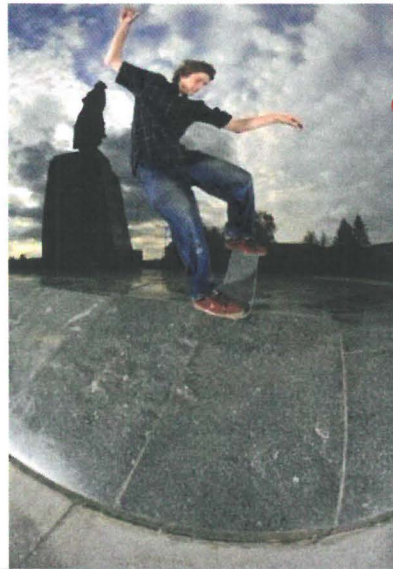
STEEL BRIDGE SKATEPARK

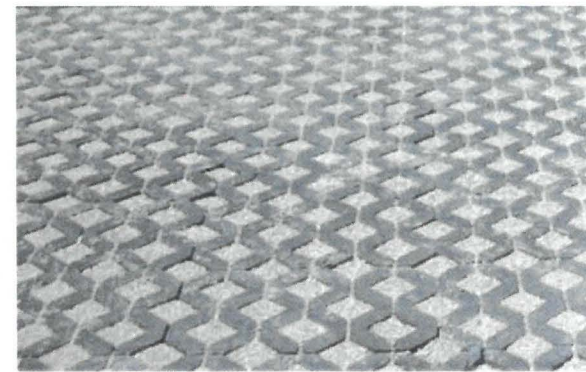
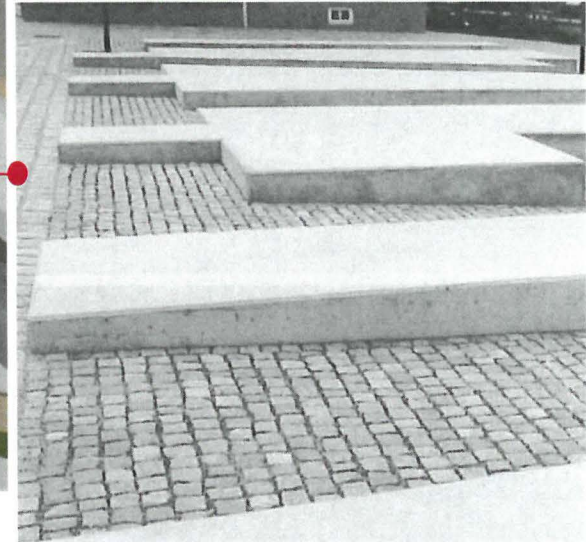
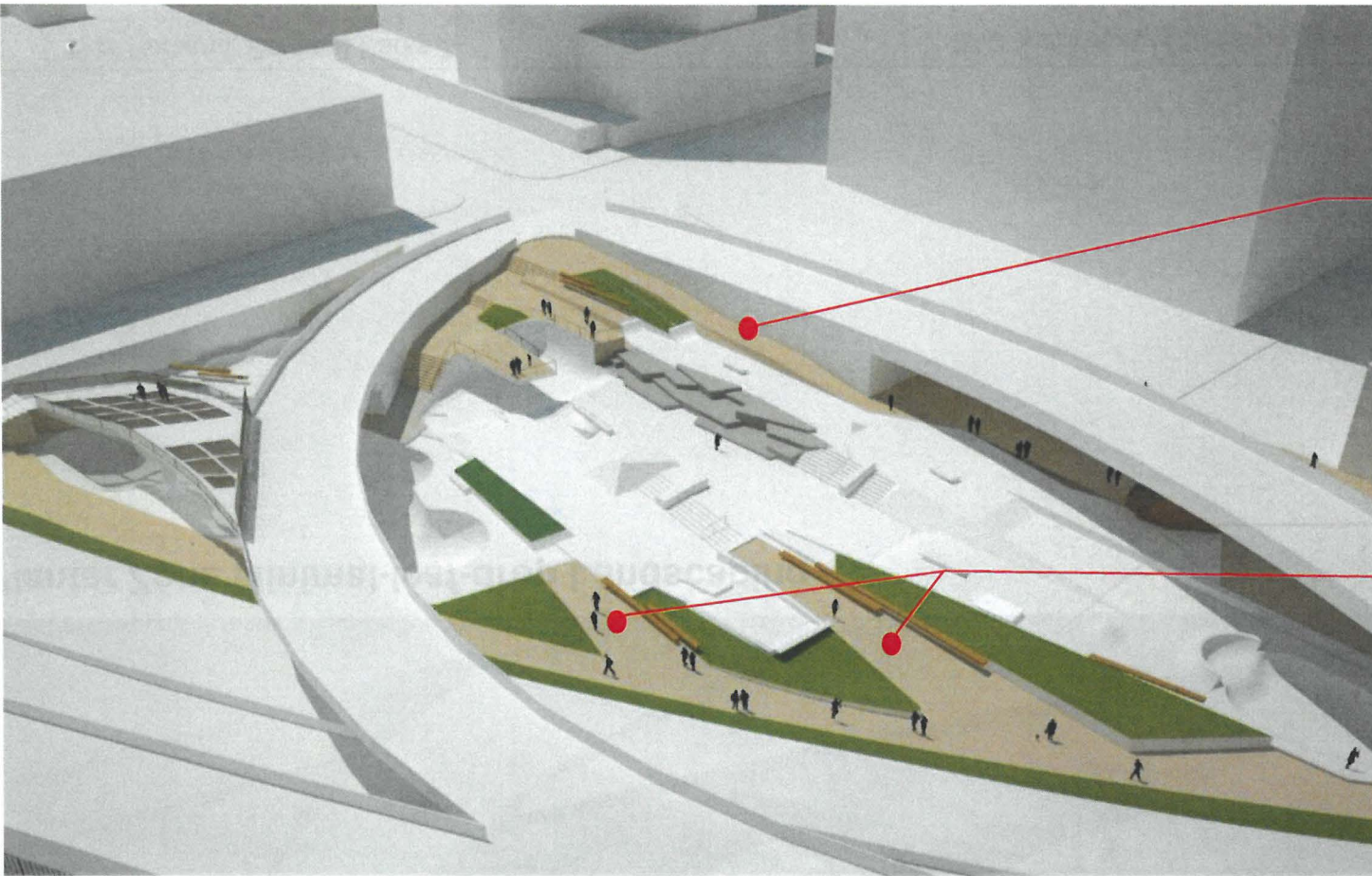
City of Portland, Portland Parks & Recreation

DAO Architecture LLC / Lango Hansen Landscape Architects / Grindline Skateparks, Inc.

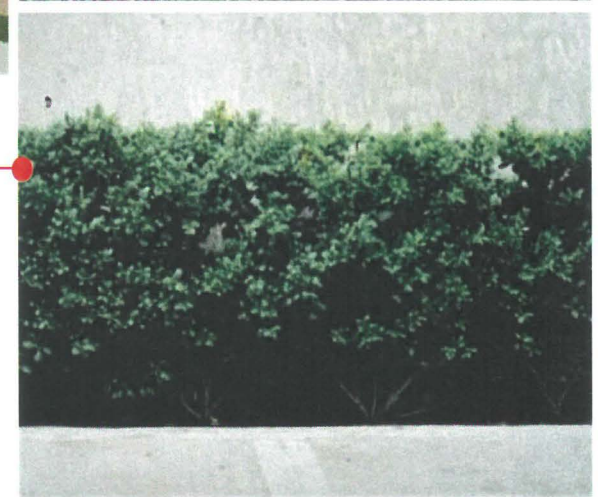
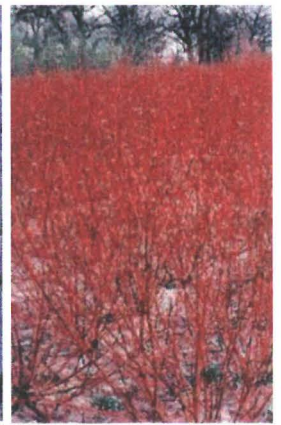
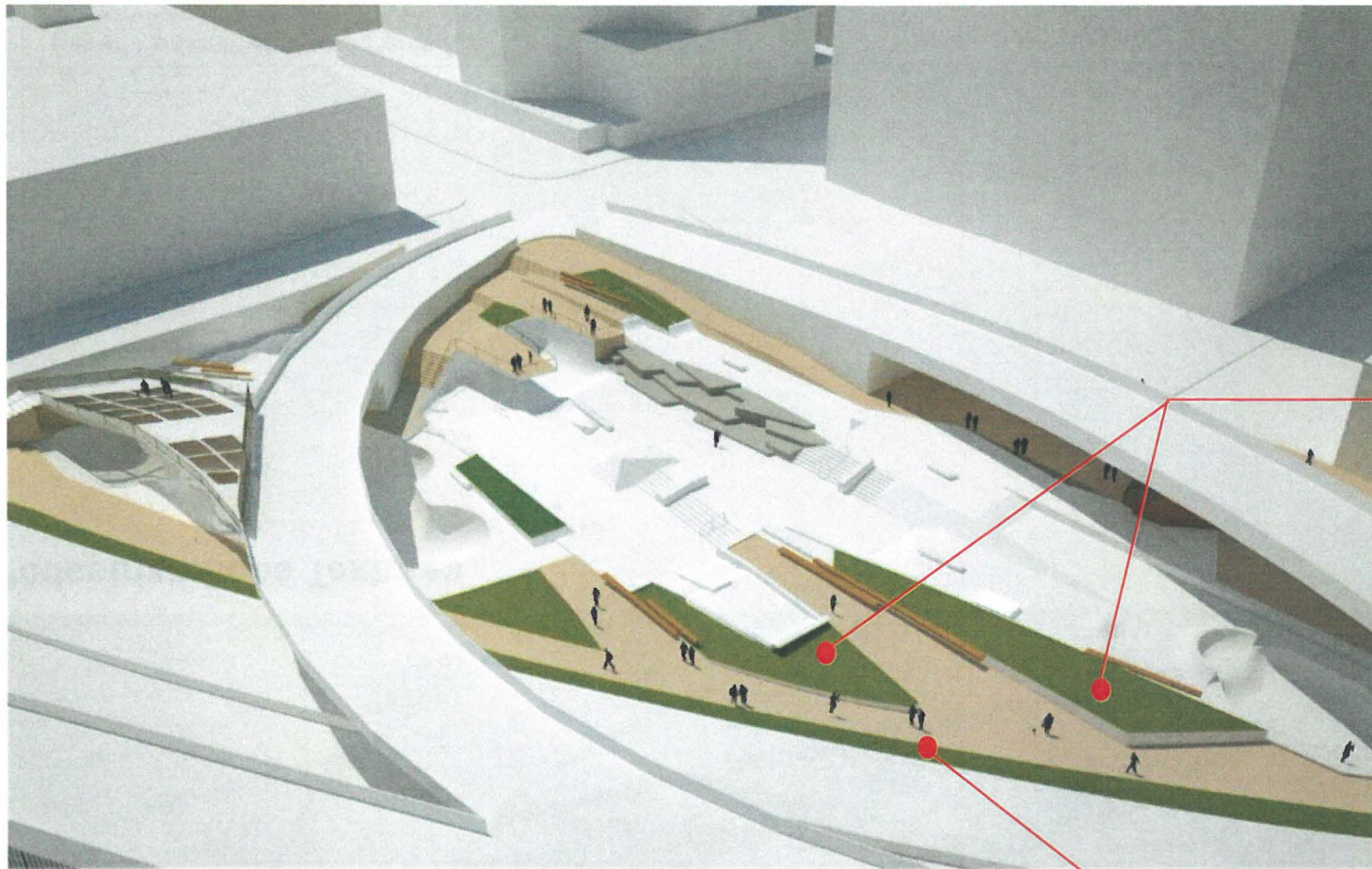


Skate Terrain Textures



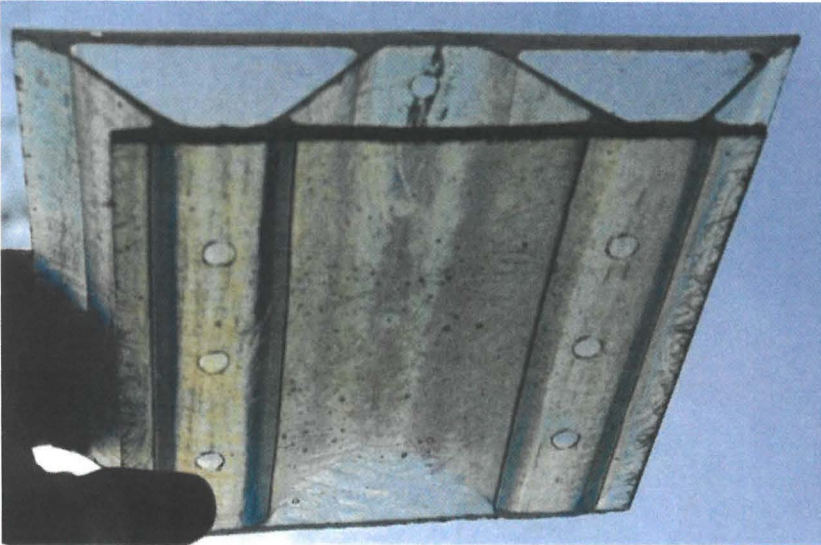


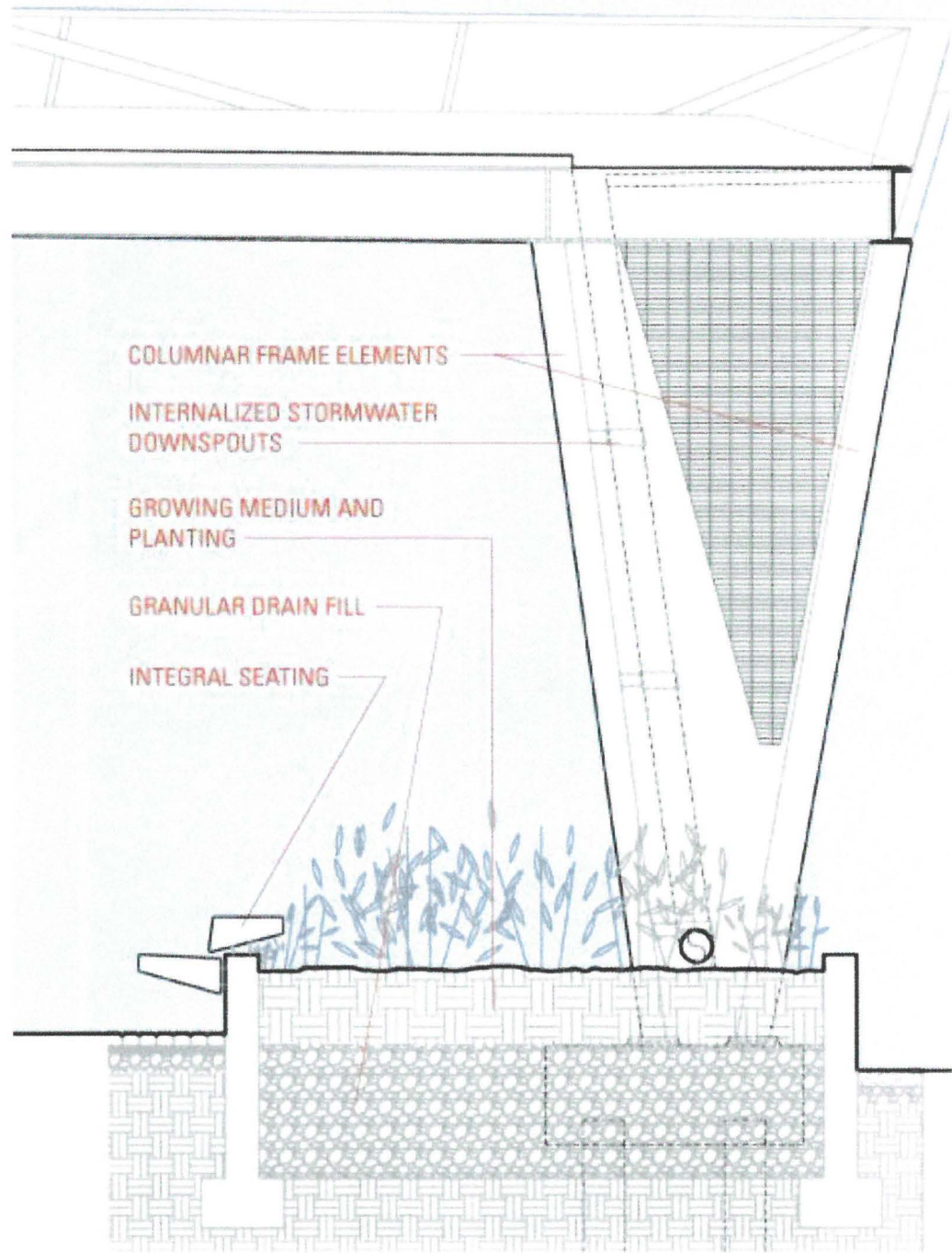
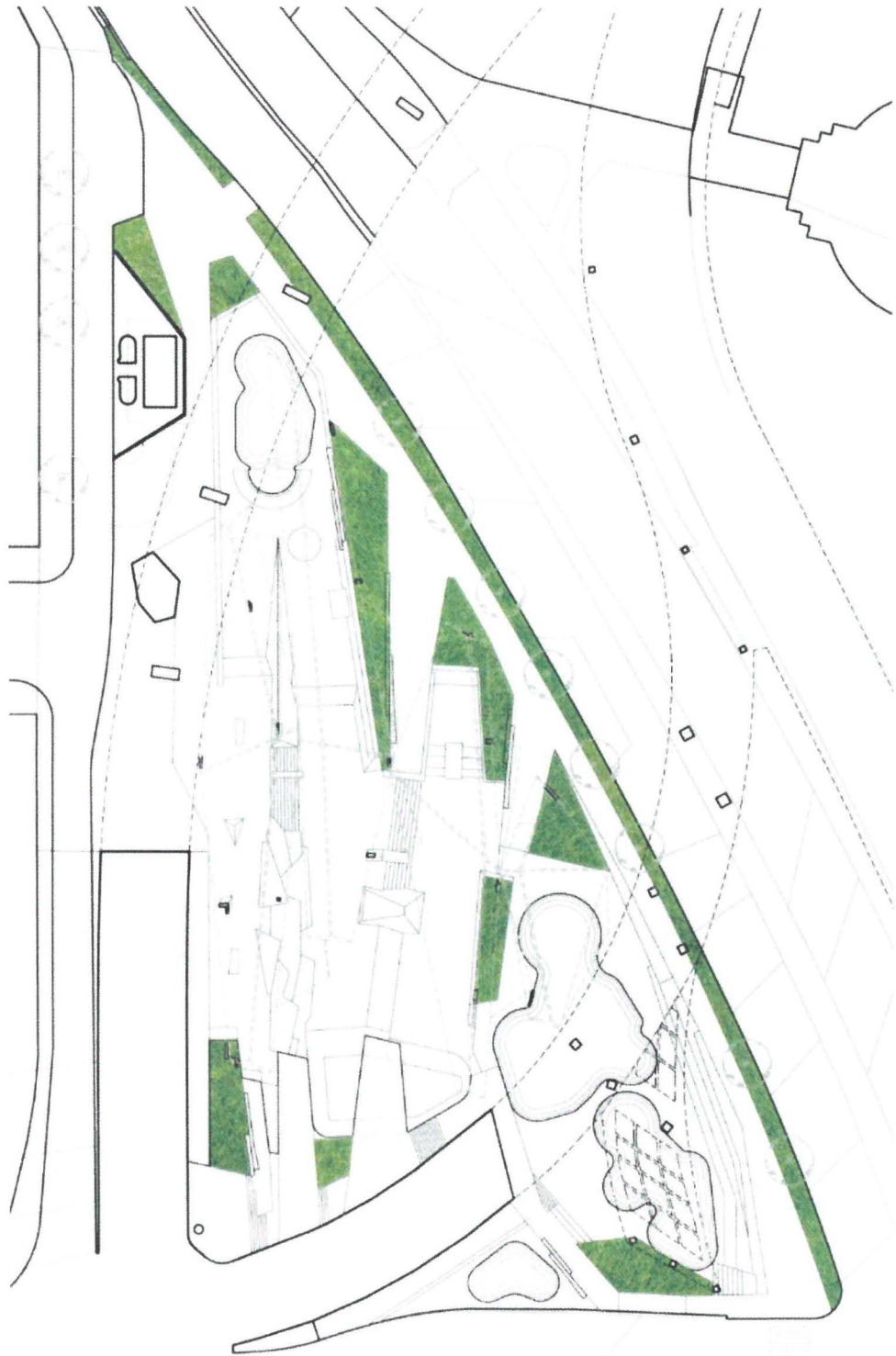
Pedestrian Zone Textures



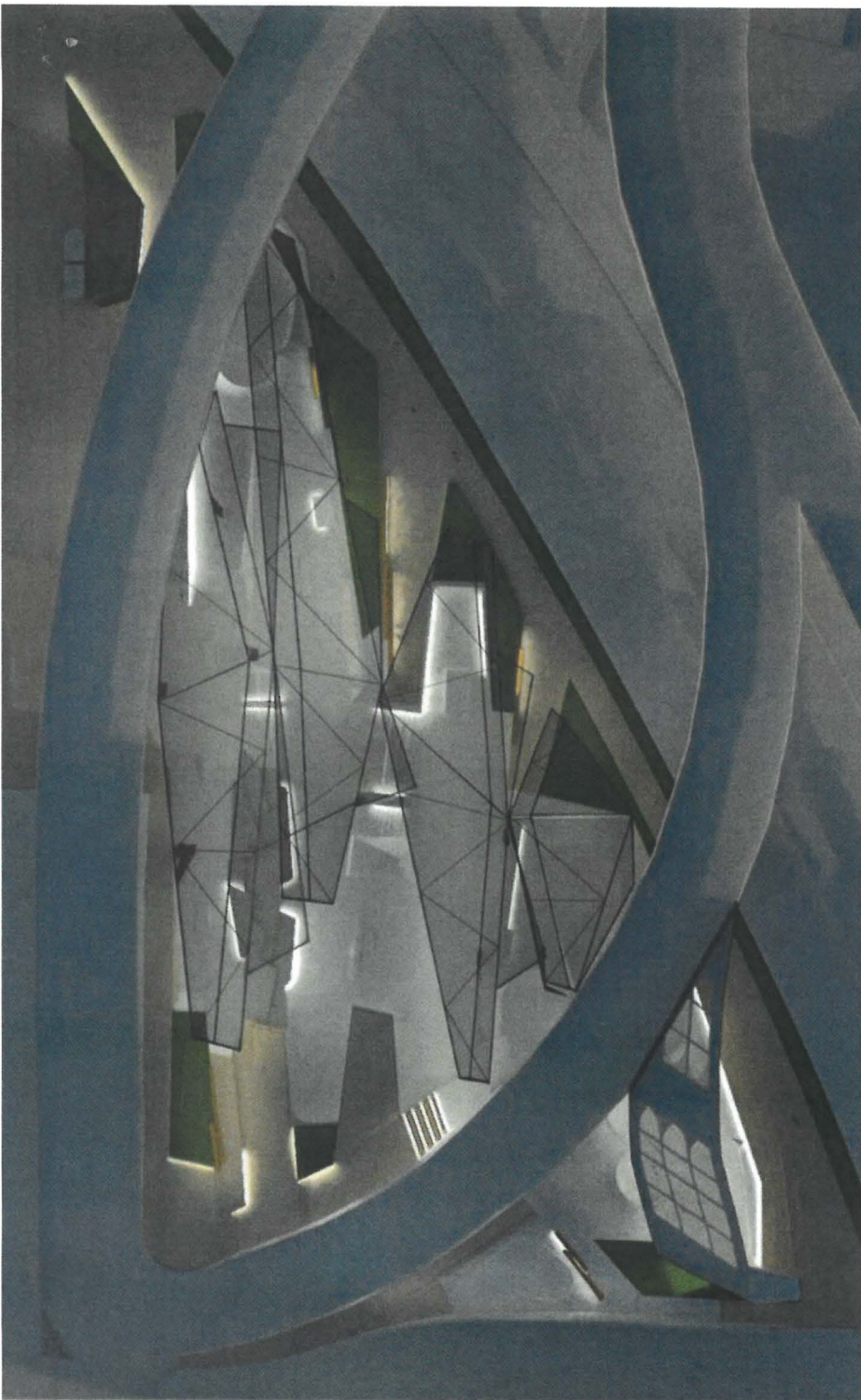
Planter Zone Minimal-leaf-drop Landscaping

Overhead Materials

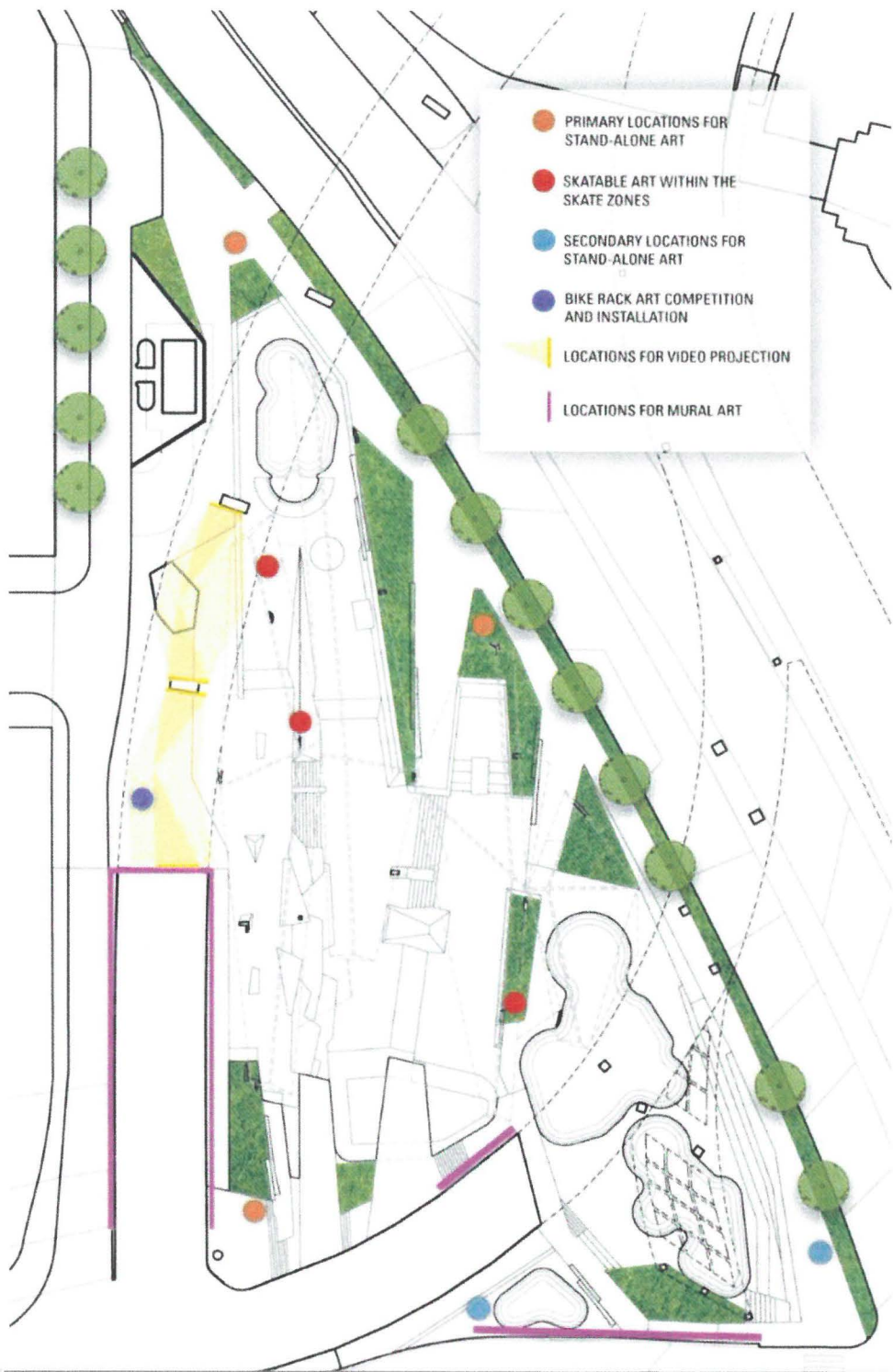




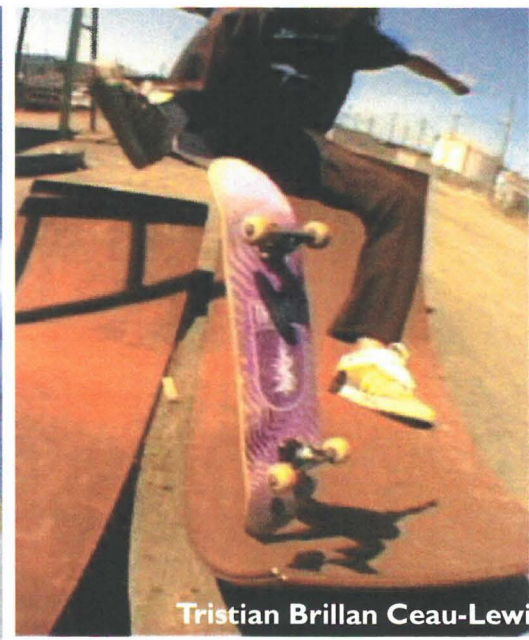
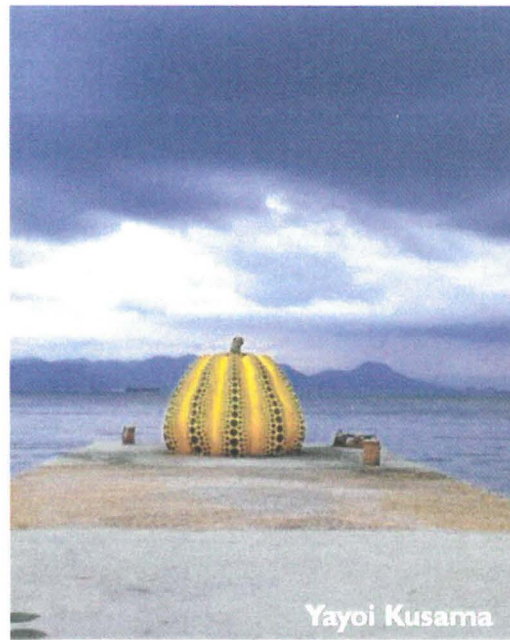
Raincover and Stormwater Strategy



Project Lighting



City of Portland, Portland Parks & Recreation



Project Art Integration – Skatable and Stand - alone

DAO Architecture LLC / Lango Hansen Landscape Architects / Grindline Skateparks, Inc.