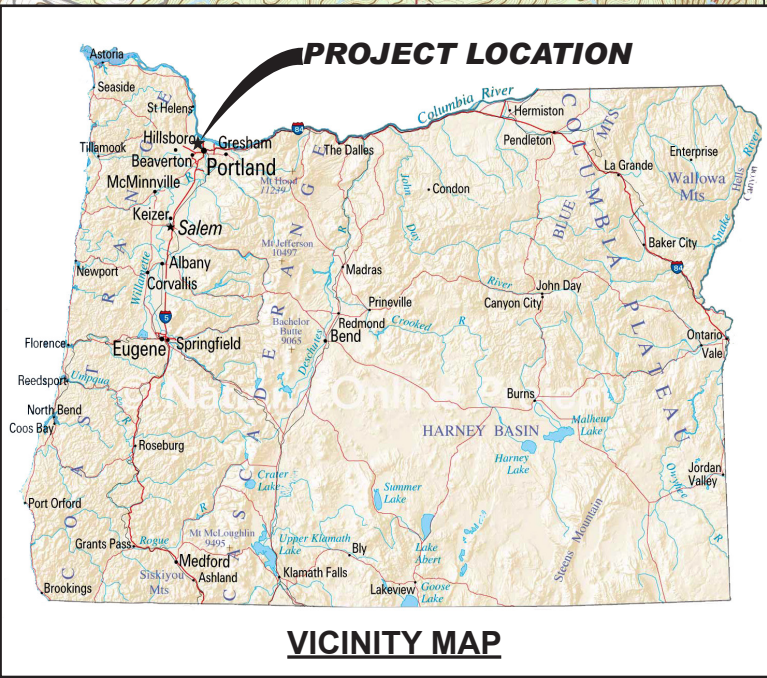


**PROJECT LOCATION**  
 N 45.5617° - W 122.7363°



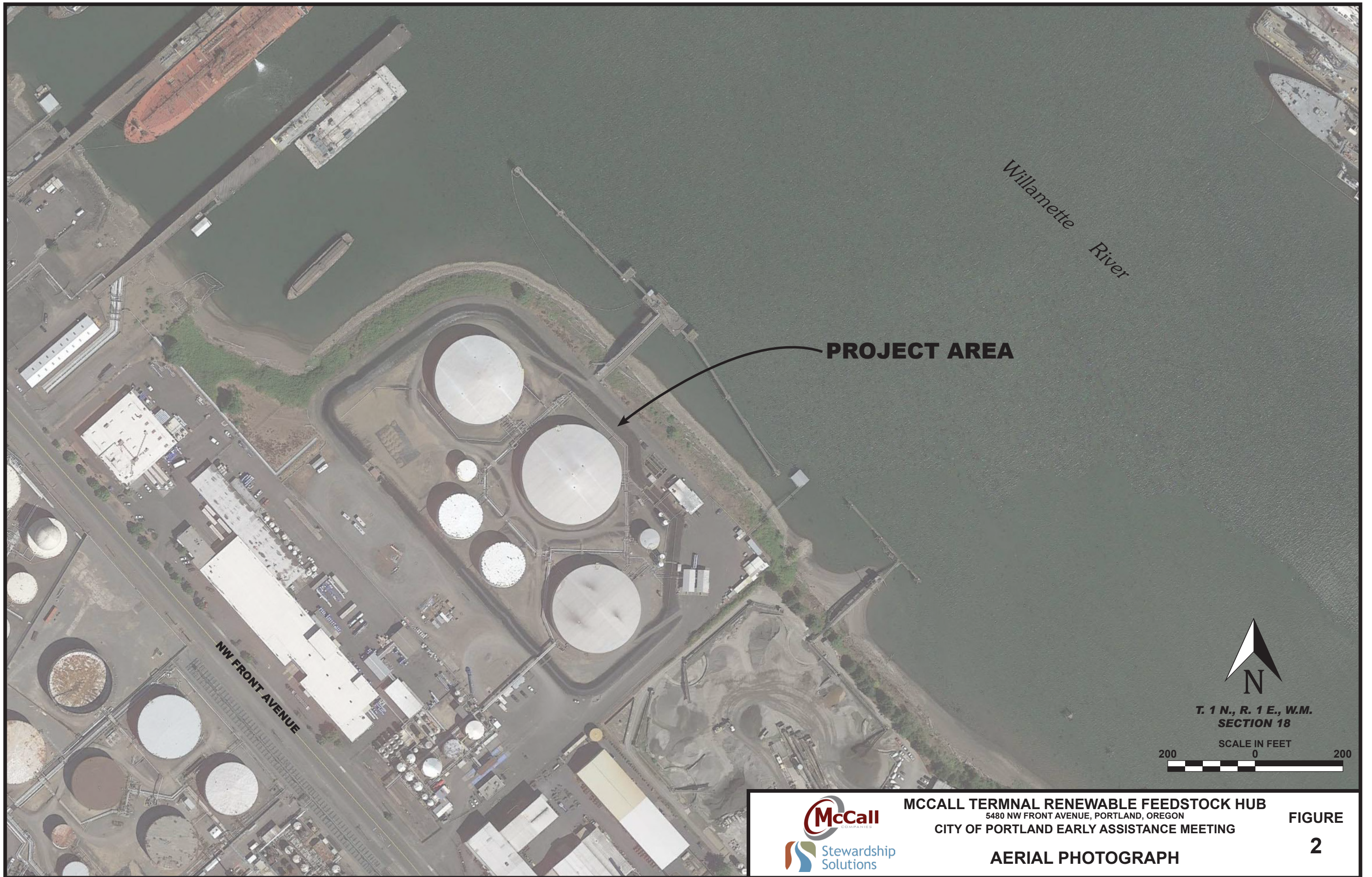
**VICINITY MAP**

**T. 1 N., R. 1 E., W.M.**  
**SECTION 18**  
 SCALE IN FEET  
 2000 0 2000



**MCCALL TERMINAL RENEWABLE FEEDSTOCK HUB**  
 5480 NW FRONT AVENUE, PORTLAND, OREGON  
 CITY OF PORTLAND EARLY ASSISTANCE MEETING  
**LOCATION AND VICINITY MAPS**

**FIGURE 1**



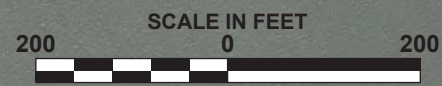
**PROJECT AREA**

*Willamette River*

**NW FRONT AVENUE**



**T. 1 N., R. 1 E., W.M.  
SECTION 18**



**MCCALL TERMINAL RENEWABLE FEEDSTOCK HUB**  
5480 NW FRONT AVENUE, PORTLAND, OREGON  
CITY OF PORTLAND EARLY ASSISTANCE MEETING

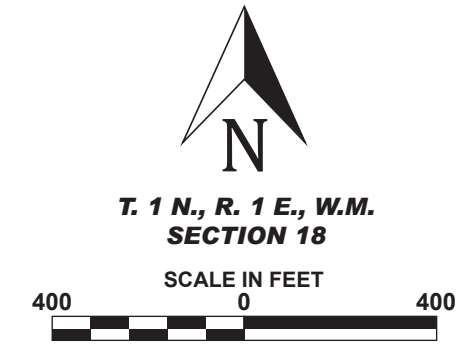
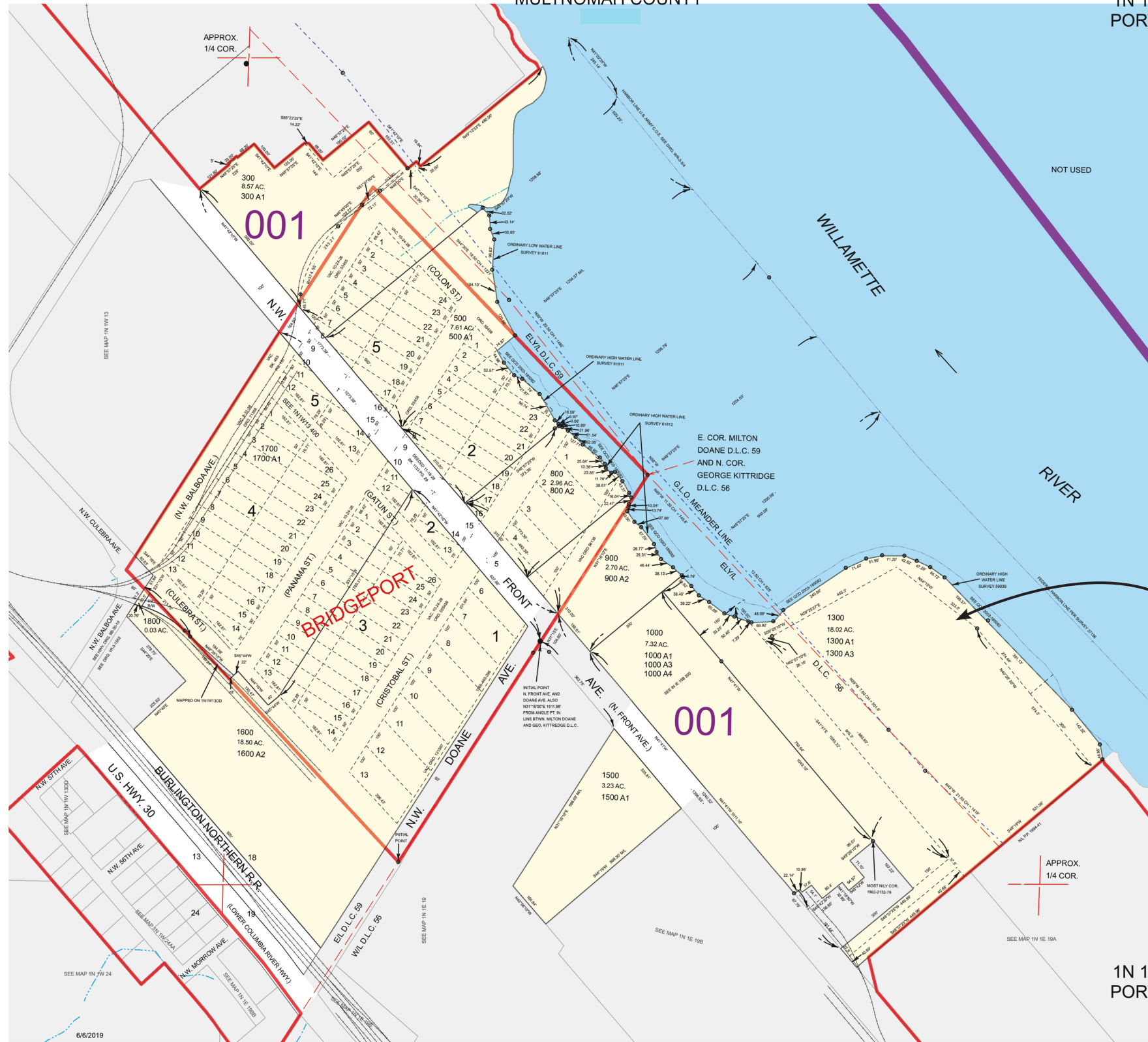
**AERIAL PHOTOGRAPH**

**FIGURE  
2**

THIS MAP WAS PREPARED FOR ASSESSMENT PURPOSE ONLY

S.W. 1/4 SEC. 18 T. 1 N. R. 1 E. W.M.  
MULTNOMAH COUNTY

1N 1E 18C  
PORTLAND



**PROJECT LOCATION**

1N 1E 18C  
PORTLAND

McCall EAM May 6, 2022

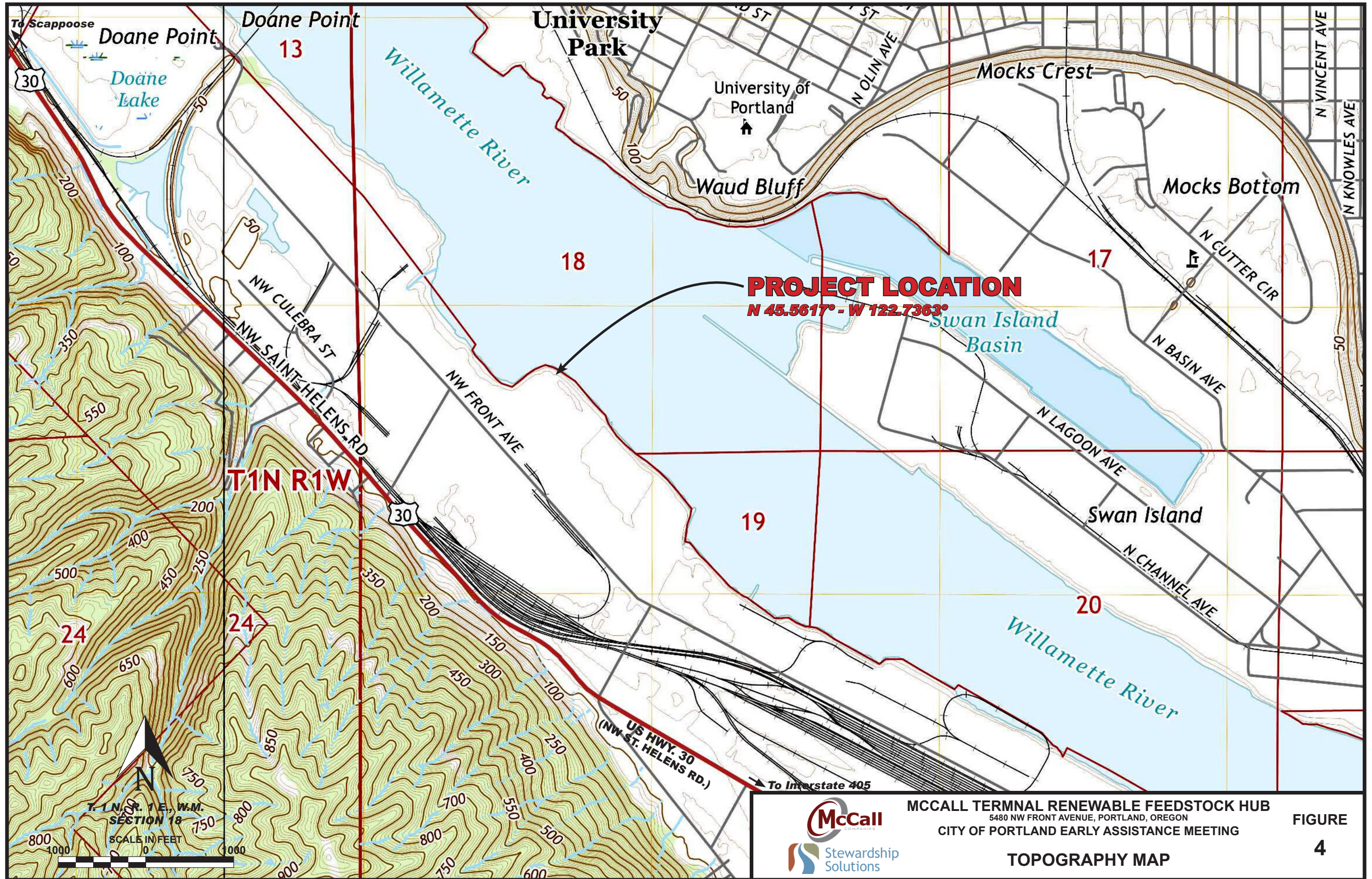


**MCCALL TERMINAL RENEWABLE FEEDSTOCK HUB**  
 5480 NW FRONT AVENUE, PORTLAND, OREGON  
 CITY OF PORTLAND EARLY ASSISTANCE MEETING

**FIGURE**  
**3**

**TAX LOT MAP**

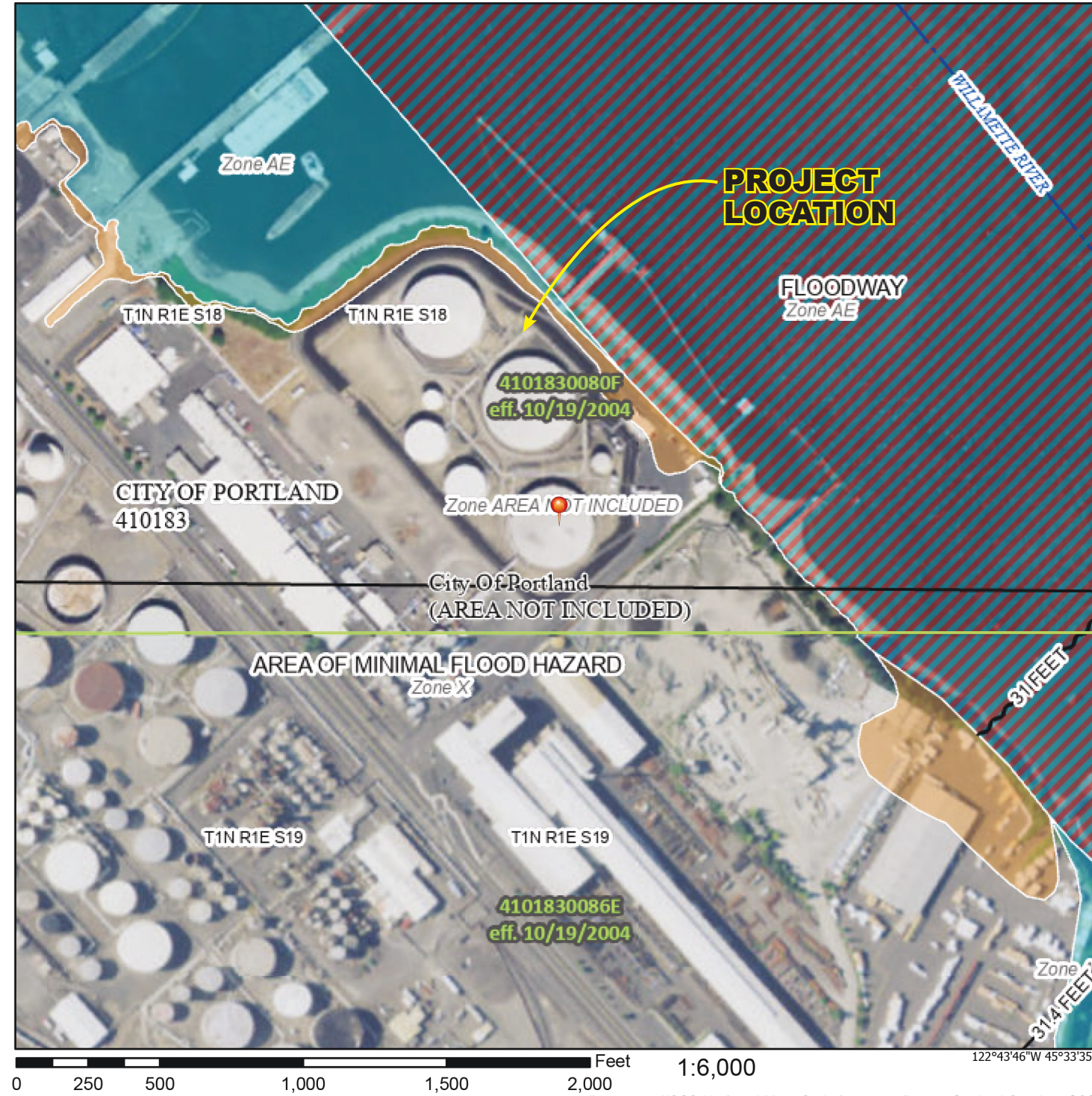
EA 22-143923 APPT



# National Flood Hazard Layer FIRMette



122°44'23"W 45°34'N



## Legend

SEE FIS REPORT FOR DETAILED LEGEND AND INDEX MAP FOR FIRM PANEL LAYOUT

- |                                    |  |
|------------------------------------|--|
| <b>SPECIAL FLOOD HAZARD AREAS</b>  | <ul style="list-style-type: none"> <li><span style="display: inline-block; width: 15px; height: 10px; background-color: lightblue; border: 1px solid black; margin-right: 5px;"></span> Without Base Flood Elevation (BFE)<br/><i>Zone A, V, A99</i></li> <li><span style="display: inline-block; width: 15px; height: 10px; background-color: #f08080; border: 1px solid black; margin-right: 5px;"></span> With BFE or Depth <i>Zone AE, AO, AH, VE, AR</i></li> <li><span style="display: inline-block; width: 15px; height: 10px; background: repeating-linear-gradient(45deg, transparent, transparent 2px, red 2px, red 4px); border: 1px solid black; margin-right: 5px;"></span> Regulatory Floodway</li> </ul>  |
| <b>OTHER AREAS OF FLOOD HAZARD</b> | <ul style="list-style-type: none"> <li><span style="display: inline-block; width: 15px; height: 10px; background-color: #f4a460; border: 1px solid black; margin-right: 5px;"></span> 0.2% Annual Chance Flood Hazard, Areas of 1% annual chance flood with average depth less than one foot or with drainage areas of less than one square mile <i>Zone X</i></li> <li><span style="display: inline-block; width: 15px; height: 10px; background: repeating-linear-gradient(-45deg, transparent, transparent 2px, gray 2px, gray 4px); border: 1px solid black; margin-right: 5px;"></span> Future Conditions 1% Annual Chance Flood Hazard <i>Zone X</i></li> <li><span style="display: inline-block; width: 15px; height: 10px; background: repeating-linear-gradient(-45deg, transparent, transparent 2px, orange 2px, orange 4px); border: 1px solid black; margin-right: 5px;"></span> Area with Reduced Flood Risk due to Levee. See Notes, <i>Zone X</i></li> <li><span style="display: inline-block; width: 15px; height: 10px; background: repeating-linear-gradient(-45deg, transparent, transparent 2px, yellow 2px, yellow 4px); border: 1px solid black; margin-right: 5px;"></span> Area with Flood Risk due to Levee <i>Zone D</i></li> </ul>  |
| <b>OTHER AREAS</b>                 | <ul style="list-style-type: none"> <li><span style="display: inline-block; width: 15px; height: 10px; background-color: #e0e0e0; border: 1px solid black; margin-right: 5px;"></span> NO SCREEN Area of Minimal Flood Hazard <i>Zone X</i></li> <li><span style="display: inline-block; width: 15px; height: 10px; border: 2px solid blue; margin-right: 5px;"></span> Effective LOMRs</li> <li><span style="display: inline-block; width: 15px; height: 10px; background-color: #f0e68c; border: 1px solid black; margin-right: 5px;"></span> Area of Undetermined Flood Hazard <i>Zone D</i></li> </ul>  |
| <b>GENERAL STRUCTURES</b>          | <ul style="list-style-type: none"> <li><span style="display: inline-block; width: 15px; border-bottom: 2px dashed black; margin-right: 5px;"></span> Channel, Culvert, or Storm Sewer</li> <li><span style="display: inline-block; width: 15px; border-bottom: 2px solid black; margin-right: 5px;"></span> Levee, Dike, or Floodwall</li> </ul>   |
| <b>OTHER FEATURES</b>              | <ul style="list-style-type: none"> <li><span style="display: inline-block; width: 15px; border-bottom: 2px solid black; margin-right: 5px;"></span> 20.2 Cross Sections with 1% Annual Chance Water Surface Elevation</li> <li><span style="display: inline-block; width: 15px; border-bottom: 2px dashed black; margin-right: 5px;"></span> 17.5 Coastal Transect</li> <li><span style="display: inline-block; width: 15px; border-bottom: 2px dotted black; margin-right: 5px;"></span> Coastal Transect</li> <li><span style="display: inline-block; width: 15px; border-bottom: 2px solid black; margin-right: 5px;"></span> Base Flood Elevation Line (BFE)</li> <li><span style="display: inline-block; width: 15px; border-bottom: 2px solid red; margin-right: 5px;"></span> Limit of Study</li> <li><span style="display: inline-block; width: 15px; border-bottom: 2px solid yellow; margin-right: 5px;"></span> Jurisdiction Boundary</li> <li><span style="display: inline-block; width: 15px; border-bottom: 2px dashed black; margin-right: 5px;"></span> Coastal Transect Baseline</li> <li><span style="display: inline-block; width: 15px; border-bottom: 2px solid blue; margin-right: 5px;"></span> Profile Baseline</li> <li><span style="display: inline-block; width: 15px; border-bottom: 2px solid blue; margin-right: 5px;"></span> Hydrographic Feature</li> </ul> |
| <b>MAP PANELS</b>                  | <ul style="list-style-type: none"> <li><span style="display: inline-block; width: 15px; height: 10px; background-color: #e0e0e0; border: 1px solid black; margin-right: 5px;"></span> Digital Data Available</li> <li><span style="display: inline-block; width: 15px; height: 10px; background-color: #f0f0f0; border: 1px solid black; margin-right: 5px;"></span> No Digital Data Available</li> <li><span style="display: inline-block; width: 15px; height: 10px; background-color: #f0f0f0; border: 1px solid black; margin-right: 5px;"></span> Unmapped</li> </ul>   |
- The pin displayed on the map is an approximate point selected by the user and does not represent an authoritative property location.

This map complies with FEMA's standards for the use of digital flood maps if it is not void as described below. The basemap shown complies with FEMA's basemap accuracy standards

The flood hazard information is derived directly from the authoritative NFHL web services provided by FEMA. This map was exported on 9/28/2021 at 2:26 PM and does not reflect changes or amendments subsequent to this date and time. The NFHL and effective information may change or become superseded by new data over time.

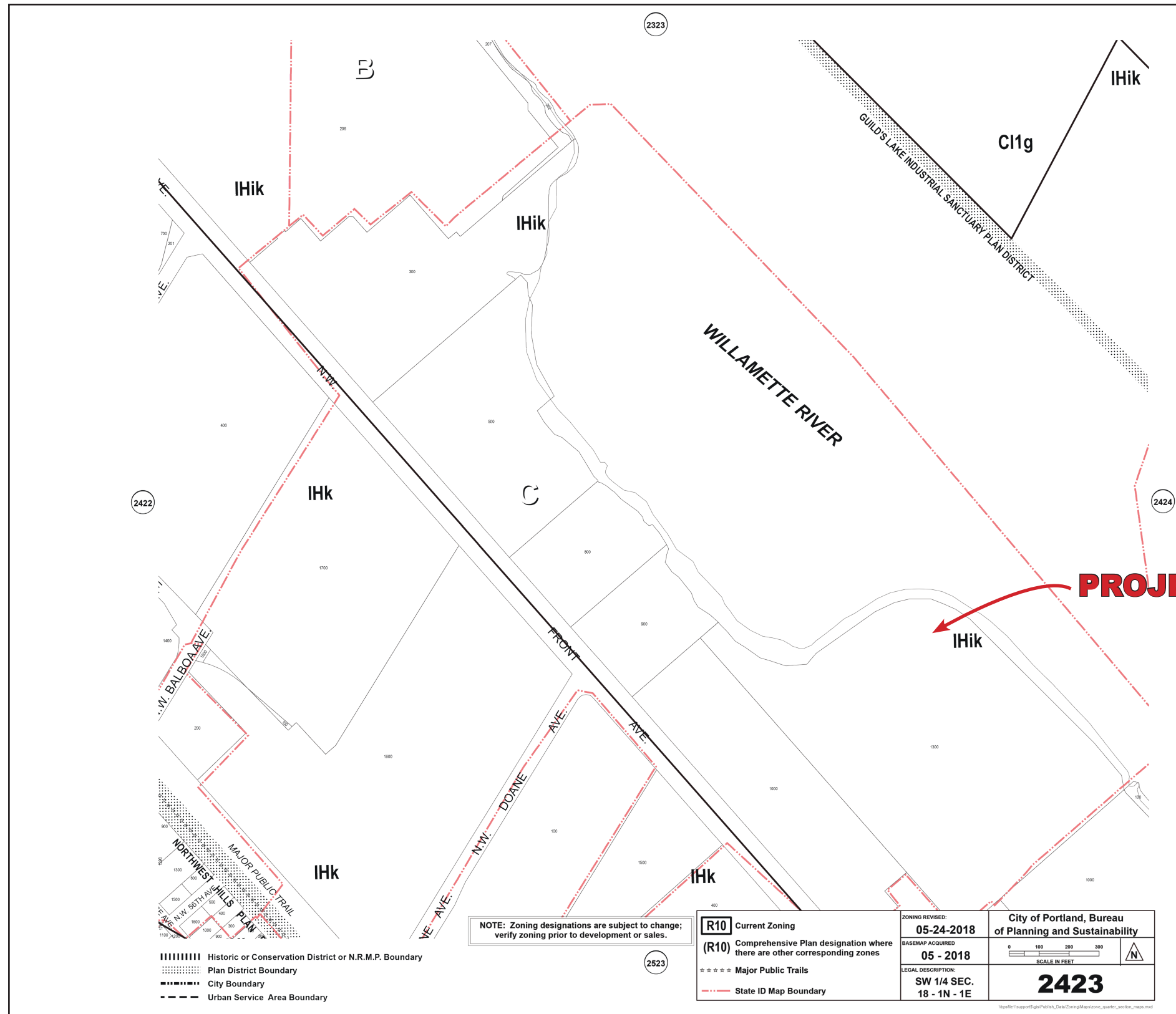
This map image is void if the one or more of the following map elements do not appear: basemap imagery, flood zone labels, legend, scale bar, map creation date, community identifiers, FIRM panel number, and FIRM effective date. Map images for unmapped and unmodernized areas cannot be used for regulatory purposes.



**MCCALL TERMINAL RENEWABLE FEEDSTOCK HUB**  
5480 NW FRONT AVENUE, PORTLAND, OREGON  
CITY OF PORTLAND EARLY ASSISTANCE MEETING

**FLOODPLAIN MAP**

**FIGURE 5**



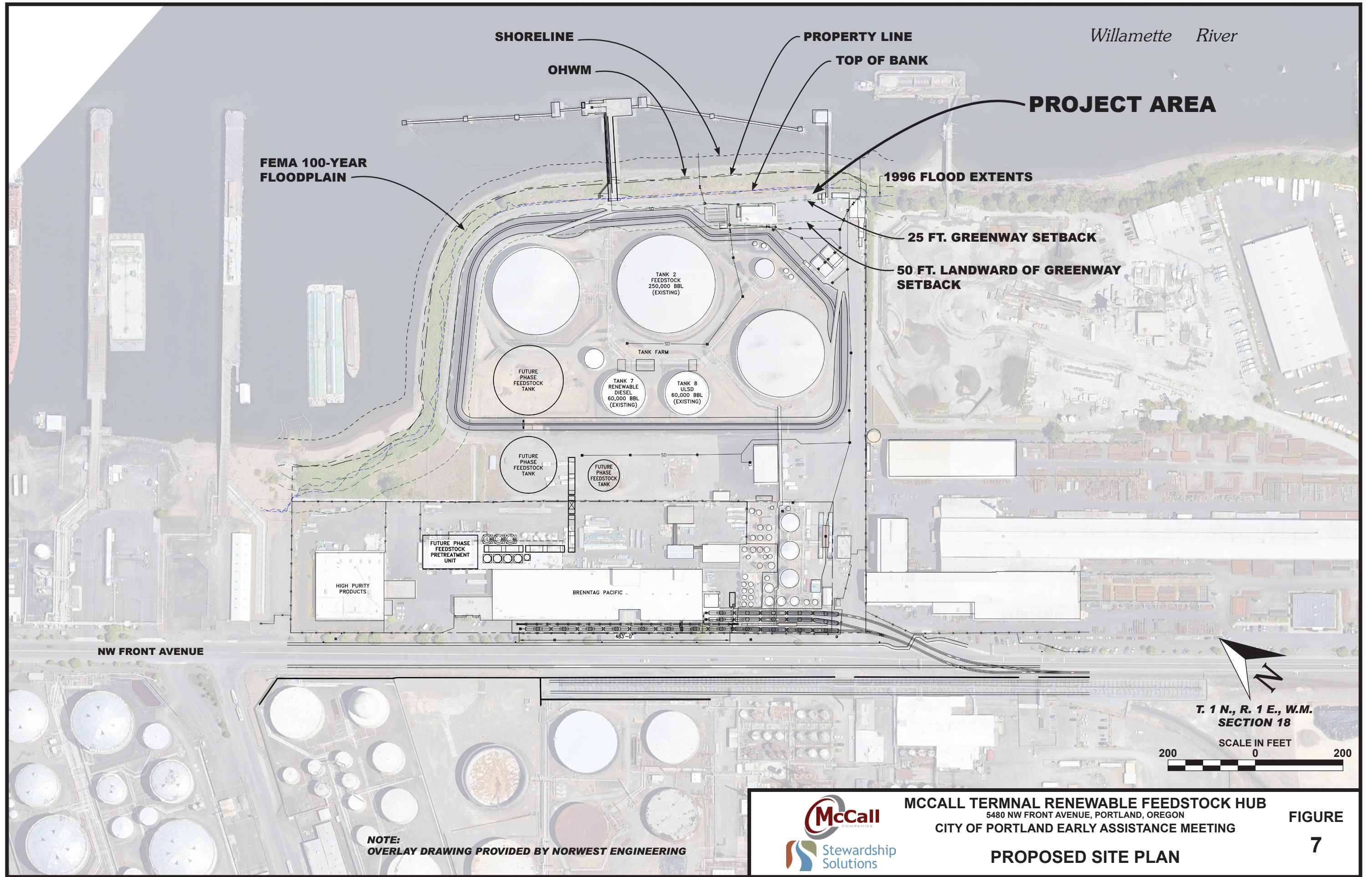
**PROJECT LOCATION**



**MCCALL TERMINAL RENEWABLE FEEDSTOCK HUB**  
 5480 NW FRONT AVENUE, PORTLAND, OREGON  
 CITY OF PORTLAND EARLY ASSISTANCE MEETING

**FIGURE  
 6**

**ZONING MAP**

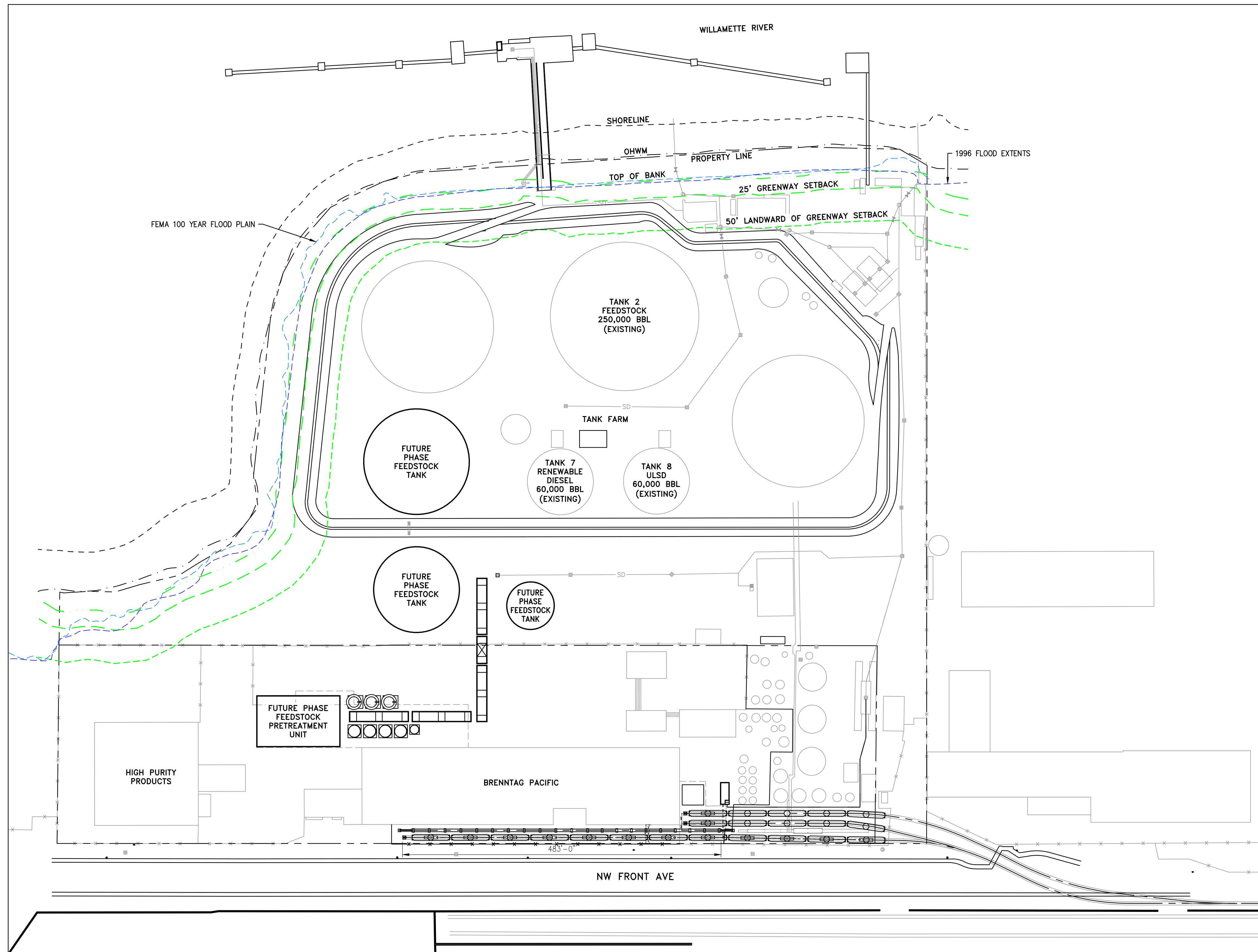


**NOTE:**  
OVERLAY DRAWING PROVIDED BY NORWEST ENGINEERING



**MCCALL TERMINAL RENEWABLE FEEDSTOCK HUB**  
 5480 NW FRONT AVENUE, PORTLAND, OREGON  
 CITY OF PORTLAND EARLY ASSISTANCE MEETING  
**PROPOSED SITE PLAN**

**FIGURE**  
**7**



- NOTES:**
1. SITE LOCATED IN GREENWAY OVERLAY ZONE 1 - RIVER INDUSTRIAL.
  2. GREENWAY SETBACK LOCATED 25' LANDWARD FROM TOP OF BANK PER PORTLAND CODE 33.440.210 B(1).
  3. 50' LANDWARD OF GREENWAY SETBACK LINE PER PORTLAND CODE 33.440.320 A AND FIGURE 440-4.
  4. DATA FOR THE ORDINARY HIGH WATER MARK (OHWM), THE FEMA 100 YEAR FLOOD PLAIN, AND THE 1996 FLOOD EXTENTS ARE FROM THE CITY OF PORTLAND OPEN DATA WEB SITE.

**NORWEST ENGINEERING**  
CONSULTING ENGINEERS  
PORTLAND, OREGON 503-254-0110  
IRVINE, CALIFORNIA  
www.NorwestEngineering.com

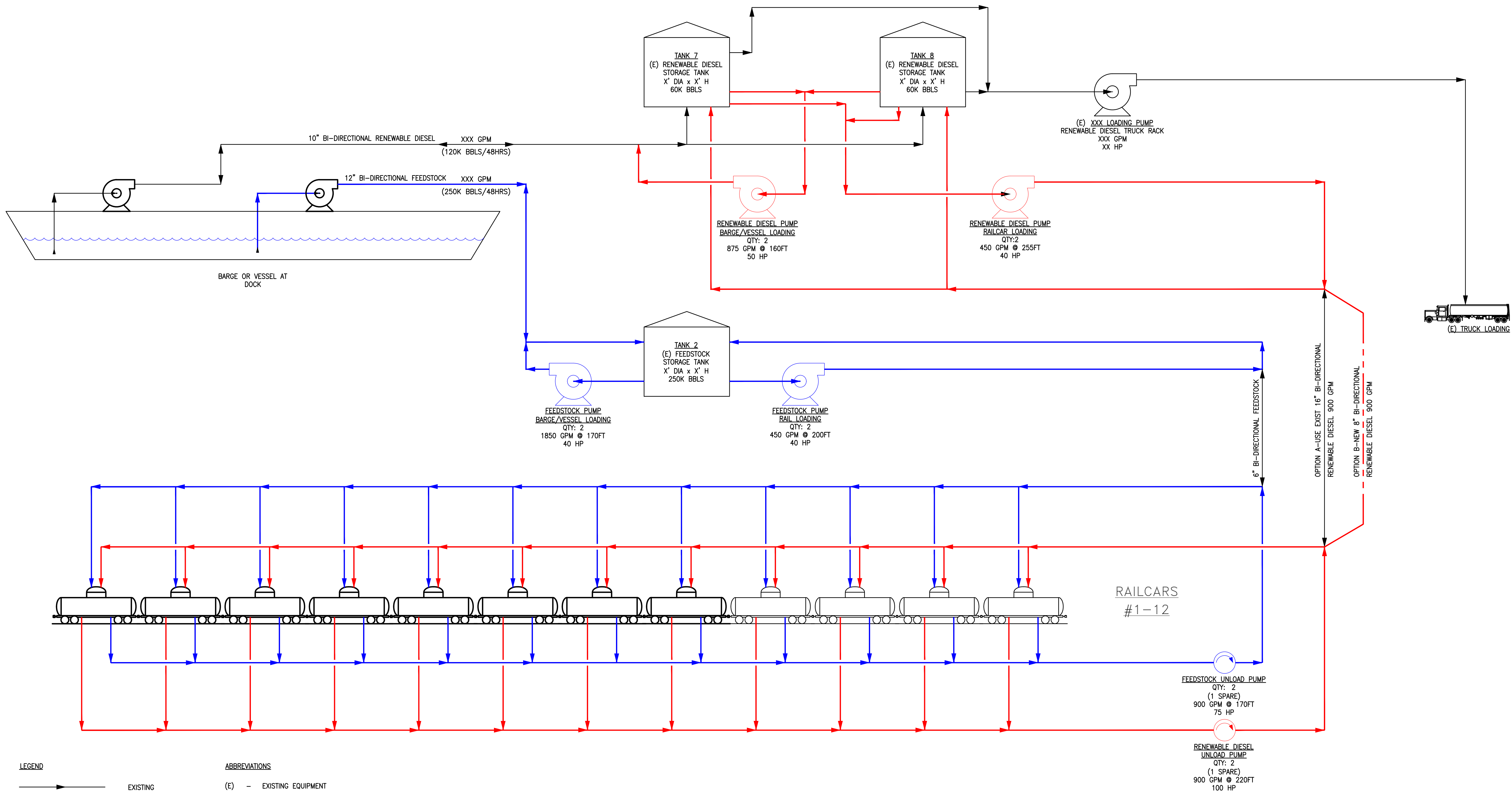
NO.	REVISION DESCRIPTION	BY	DATE	CHK	ENG
B	ISSUED FOR REVIEW	TRM	04/14/22	TRF	JAA
A	ISSUED FOR REVIEW	TRM	03/31/22	TRF	JAA

ENGINEERING RECORD	DATE
DRAWN BY: TRM	03/29/22
ENGINEERED BY: ARM	03/29/22
CHECKED BY: TRF	03/29/22
PROJECT NUMBER: RV1335	

**MCCALL TERMINALS  
RENEWABLE FEEDSTOCK HUB  
OVERALL SITE PLAN**

SCALE: 1" = 80'  
DWG.NO. D1335-SKG01  
REV. B





**LEGEND**

- EXISTING
- FEEDSTOCK
- RENEWABLE DIESEL

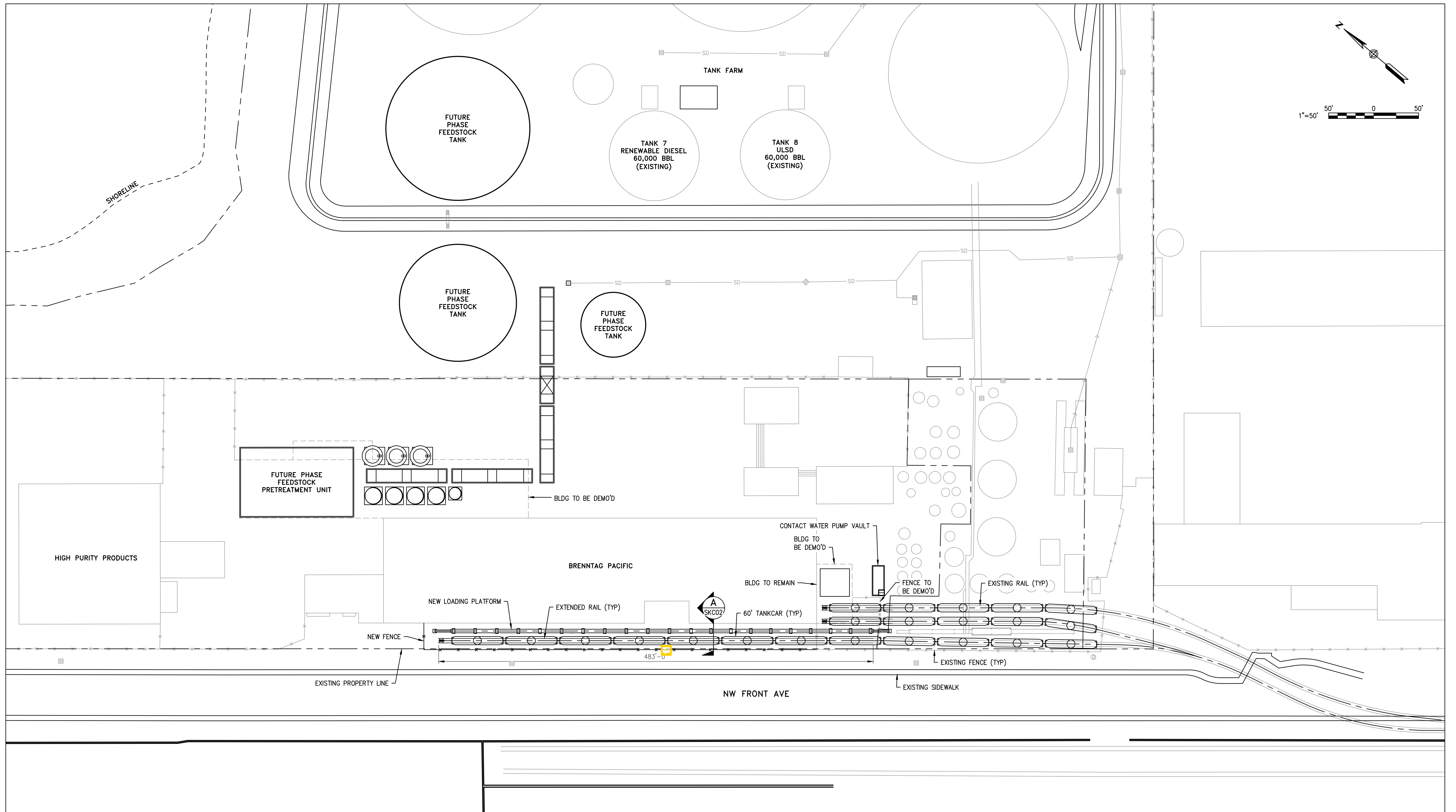
**ABBREVIATIONS**

- (E) - EXISTING EQUIPMENT

REFERENCE   NOTES	

NO.	REVISION DESCRIPTION	BY	DATE	CHK	ENG
C	ISSUED FOR REVIEW	TKB	04/20/22	JAA	JAA
B	ISSUED FOR REVIEW	RLM	04/14/22	BLB	JAA
A	ISSUED FOR REVIEW	TKB	03/31/22	JAA	JAA

ENGINEERING RECORD	DATE
DRAWN BY: TKB	03/14/22
ENGINEERED BY: JAA	03/14/22
CHECKED BY: JAA	03/14/22
PROJECT NUMBER: RV1335	



**NORWEST ENGINEERING**  
 CONSULTING ENGINEERS  
 PORTLAND, OREGON  
 503-254-0110

IRVINE, CALIFORNIA  
 www.NorwestEngineering.com

NO.	REVISION DESCRIPTION	BY	DATE	CHK	ENG
B	ISSUED FOR REVIEW	TRM	04/14/22	TRF	JAA
A	ISSUED FOR REVIEW	TRM	03/31/22	TRF	JAA

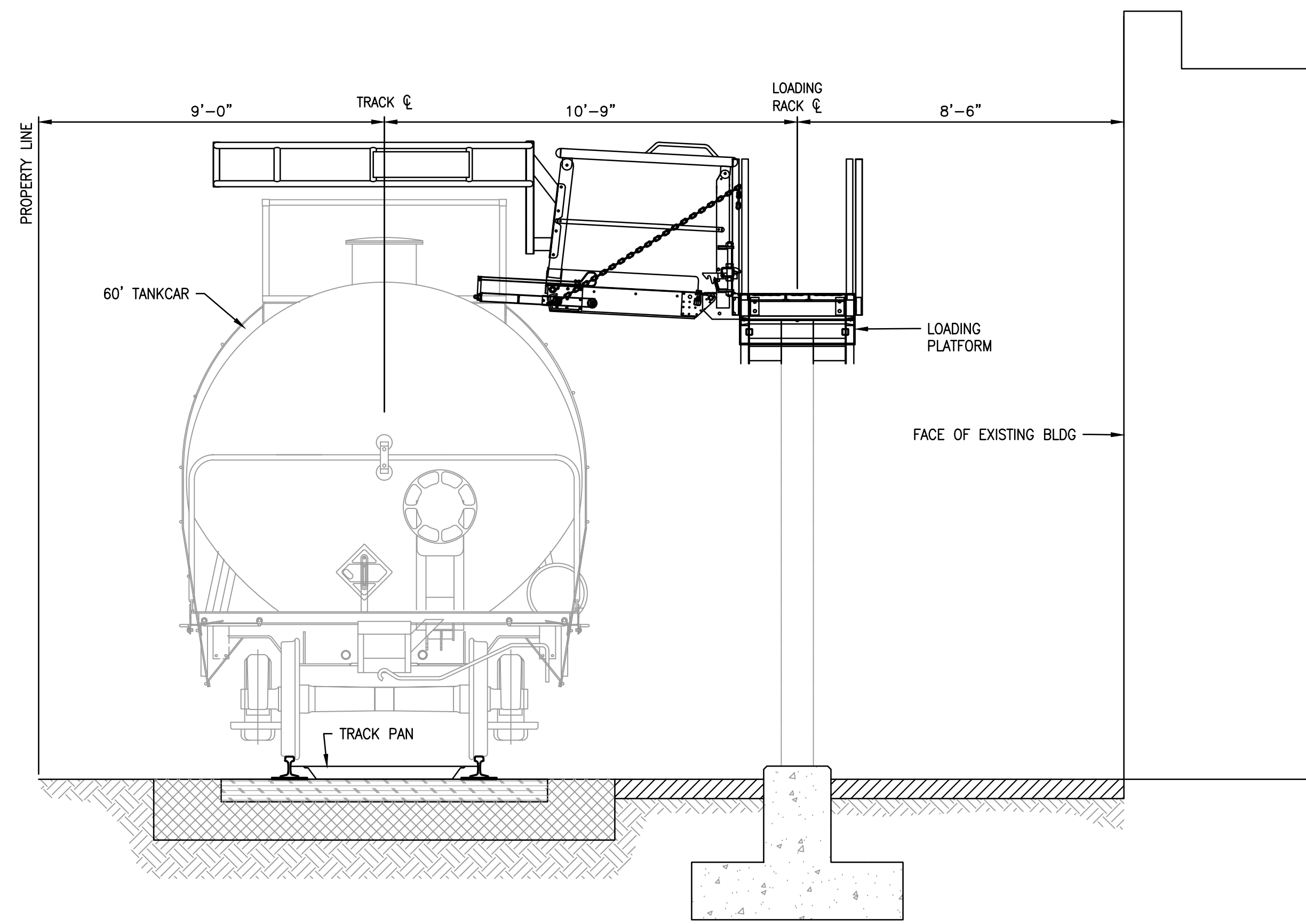
ENGINEERING RECORD	DATE
DRAWN BY: TRM	03/29/22
ENGINEERED BY: ARM	03/29/22
CHECKED BY: TRF	03/29/22

PROJECT NUMBER:	RV1335
SCALE:	1" = 50'

**MCCALL TERMINALS  
 RENEWABLE FEEDSTOCK HUB  
 SITE PLAN**

DWG. NO. **D1335-SKC01**

REV. **B**



**A** SECTION  
 SKC01 3/8" = 1'-0"

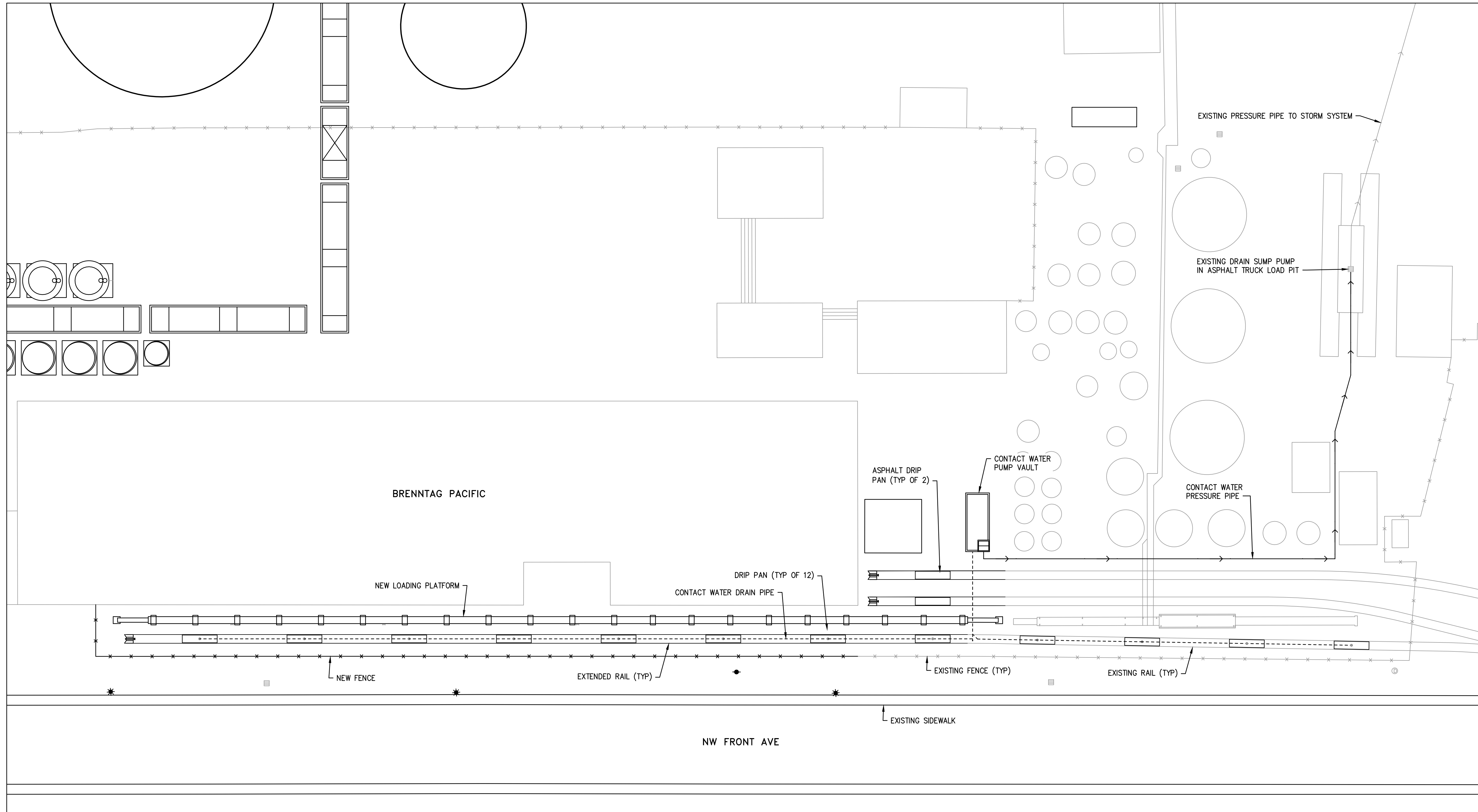
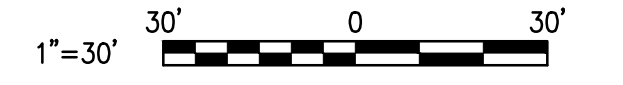
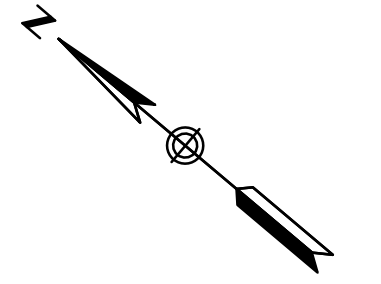
**NORWEST ENGINEERING**  
 CONSULTING ENGINEERS  
 PORTLAND, OREGON  
 503-254-0110  
 IRVINE, CALIFORNIA  
 www.NorwestEngineering.com

NO.	REVISION DESCRIPTION	BY	DATE	CHK	ENG
B	ISSUED FOR REVIEW	TRM	04/14/22	TRF	JAA
A	ISSUED FOR REVIEW	TRM	03/31/22	TRF	ARM

ENGINEERING RECORD	DATE
DRAWN BY: TRM	03/29/22
ENGINEERED BY: ARM	03/29/22
CHECKED BY: TRF	03/29/22
PROJECT NUMBER: RV1335	

SCALE:	DWG.NO.	REV.
AS SHOWN	D1335-SKC02	B

MCCALL TERMINALS  
 RENEWABLE FEEDSTOCK HUB  
 SECTION



**NORWEST ENGINEERING**  
CONSULTING ENGINEERS  
PORTLAND, OREGON  
503-254-0110  
IRVINE, CALIFORNIA  
www.NorwestEngineering.com

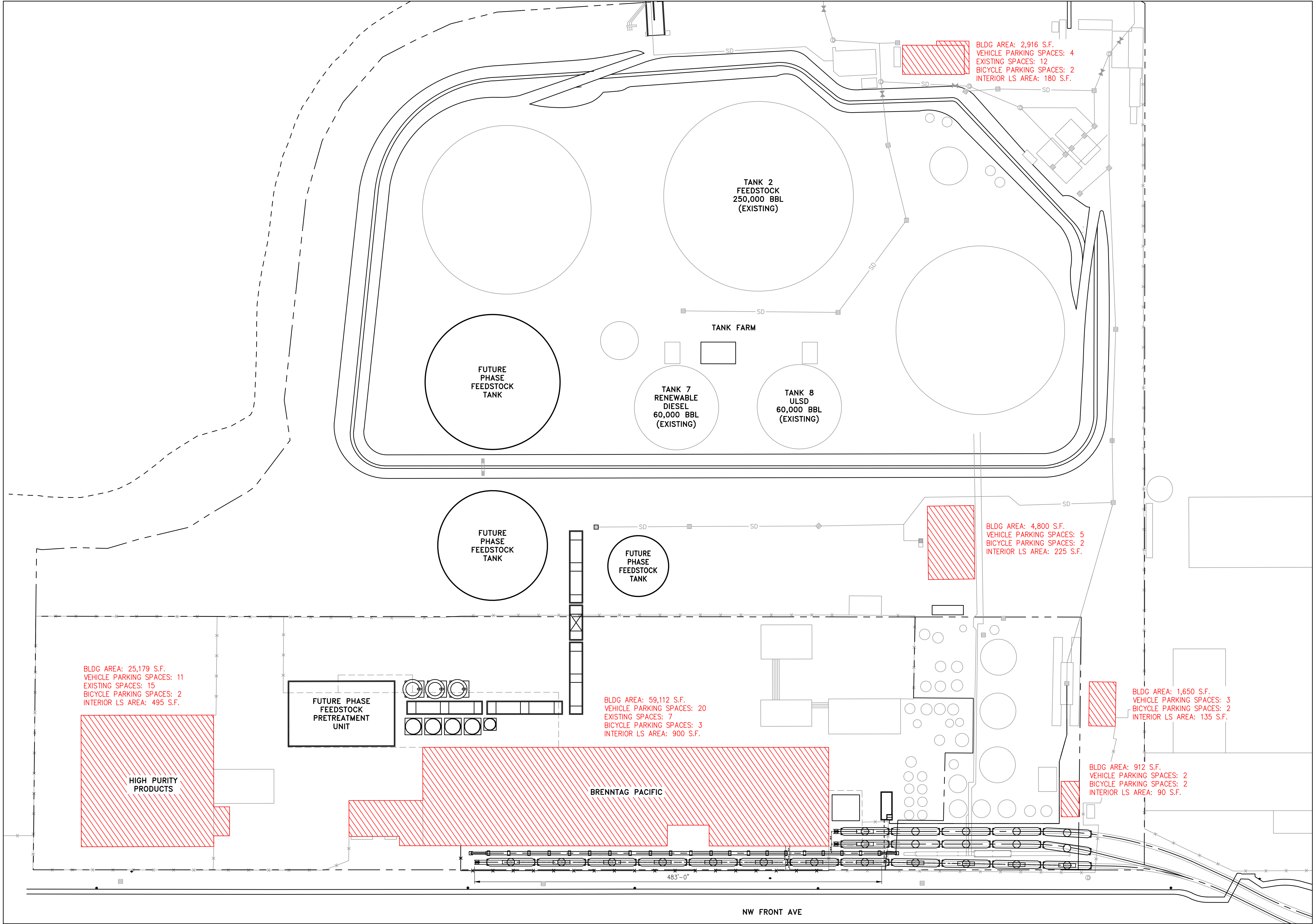
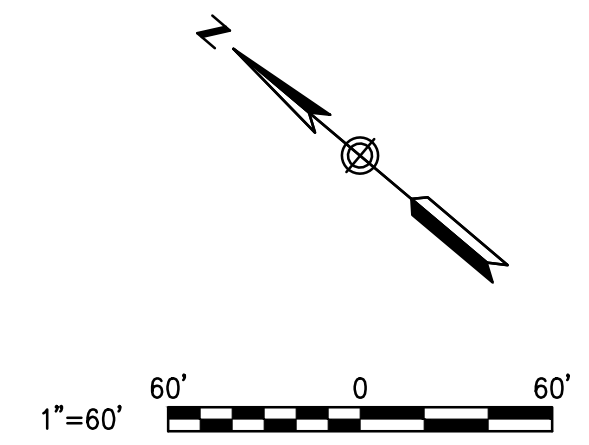
REFERENCE   NOTES	

NO.	REVISION	DESCRIPTION	BY	DATE	CHK	ENG
A	ISSUED FOR REVIEW		TRM	04/14/22	TRF	JAA

ENGINEERING RECORD	DATE
DRAWN BY: TRM	04/04/22
ENGINEERED BY: ARM	04/04/22
CHECKED BY: TRF	04/04/22
PROJECT NUMBER: RV1335	

**MCCALL TERMINALS  
RENEWABLE FEEDSTOCK HUB  
CONTACT WATER PLAN**

SCALE: 1" = 30'	DWG.NO. D1335-SKC03	REV. A
--------------------	------------------------	-----------



BLDG AREA: 2,916 S.F.  
 VEHICLE PARKING SPACES: 4  
 EXISTING SPACES: 12  
 BICYCLE PARKING SPACES: 2  
 INTERIOR LS AREA: 180 S.F.

BLDG AREA: 4,800 S.F.  
 VEHICLE PARKING SPACES: 5  
 BICYCLE PARKING SPACES: 2  
 INTERIOR LS AREA: 225 S.F.

BLDG AREA: 25,179 S.F.  
 VEHICLE PARKING SPACES: 11  
 EXISTING SPACES: 15  
 BICYCLE PARKING SPACES: 2  
 INTERIOR LS AREA: 495 S.F.

BLDG AREA: 59,112 S.F.  
 VEHICLE PARKING SPACES: 20  
 EXISTING SPACES: 7  
 BICYCLE PARKING SPACES: 3  
 INTERIOR LS AREA: 900 S.F.

BLDG AREA: 1,650 S.F.  
 VEHICLE PARKING SPACES: 3  
 BICYCLE PARKING SPACES: 2  
 INTERIOR LS AREA: 135 S.F.

BLDG AREA: 912 S.F.  
 VEHICLE PARKING SPACES: 2  
 BICYCLE PARKING SPACES: 2  
 INTERIOR LS AREA: 90 S.F.

**NOTES:**

1. PARKING REQUIREMENTS FROM CITY OF PORTLAND TITLE 33, PLANNING AND ZONING.
2. EXISTING SPACES: 34 TOTAL (PARKING SPACES PER AERIAL IMAGERY).
3. REQUIRED VEHICLE PARKING SPACES: 45 TOTAL (ASSUMED BUILDING TYPES TO GENERATE REQUIRED SPACES).
4. REQUIRED BICYCLE SPACES: 13 TOTAL.
5. INTERIOR LANDSCAPING: 2,025 TOTAL SQUARE FEET.

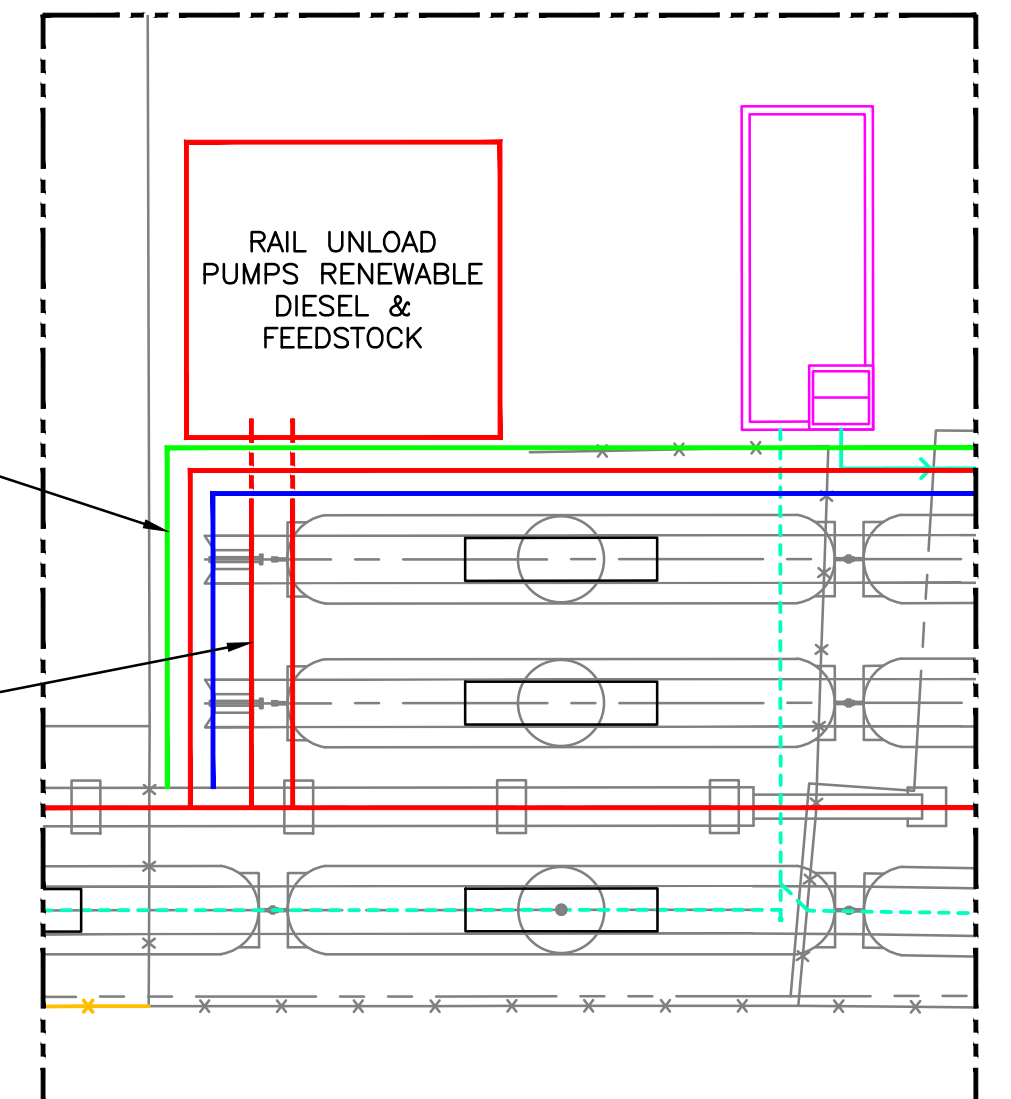
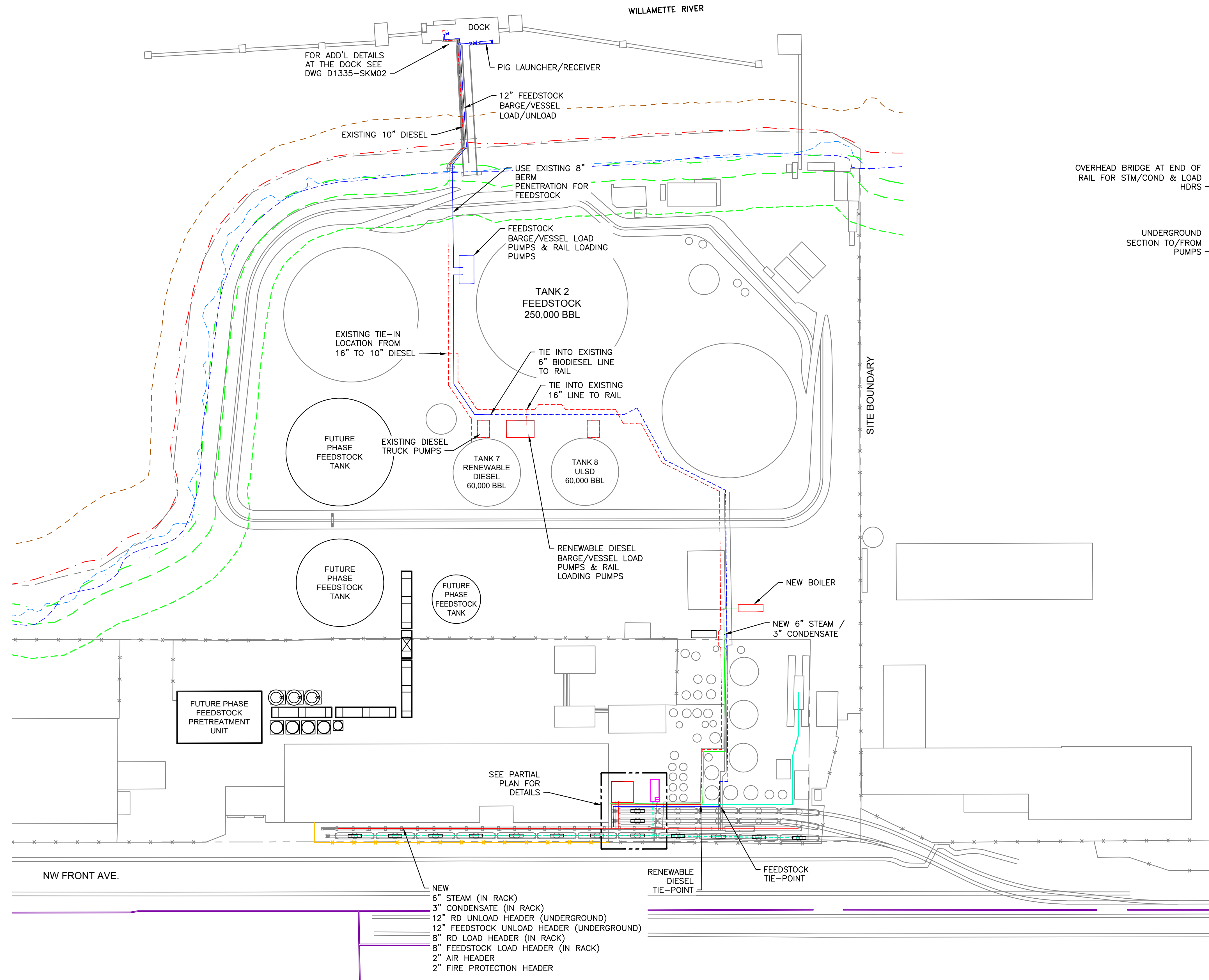
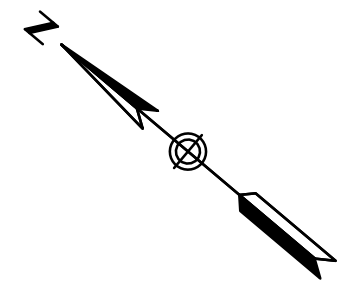
REFERENCE | NOTES

NO.	REVISION DESCRIPTION	BY	DATE	CHK	ENG
A	ISSUED FOR REVIEW	TRM	04/14/22	TRF	JAA

ENGINEERING RECORD	DATE
DRAWN BY: TRM	04/14/22
ENGINEERED BY: ARM	04/14/22
CHECKED BY: TRF	04/14/22
PROJECT NUMBER: RV1335	

**MCCALL TERMINALS  
 RENEWABLE FEEDSTOCK HUB  
 SITE PARKING REQUIREMENTS**

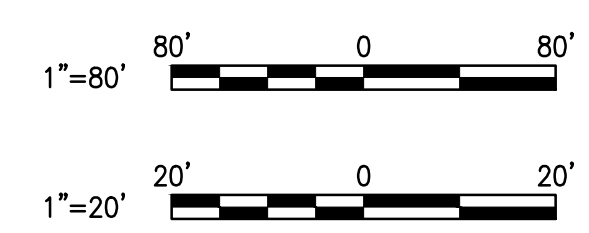
SCALE: 1" = 60'	DWG.NO. D1335-SK04	REV. A
--------------------	-----------------------	-----------



**PARTIAL PLAN**  
SCALE: 1"=20'

Bill of Material		
PRODUCT	DESCRIPTION	LENGTH
FEEDSTOCK TK FARM TO/FROM DOCK	12" PIPE	800'-0"
FEEDSTOCK LOADING @ RAIL	8" PIPE	900'-0"
FEEDSTOCK UNLOADING @ RAIL	12" PIPE (FBE COATED)	800'-0"
RENEWABLE DIESEL LOADING @ RAIL	8" PIPE	900'-0"
RENEWABLE DIESEL UNLOADING @ RAIL	12" PIPE (FBE COATED)	800'-0"
STEAM BOILER TO RAIL	6" PIPE	1100'-0"
CONDENSATE RAIL TO BOILER	3" PIPE	1100'-0"
AIR HEADER @ RAIL	2" PIPE	800'-0"
FIRE PROTECTION @ RAIL	2" PIPE	800'-0"

**LEGEND:**  
 - - - - - EXIST  
 - - - - - NEW  
 - - - - - FEEDSTOCK  
 - - - - - RENEWABLE DIESEL  
 - - - - - STEAM/CONDENSATE



REFERENCE | NOTES

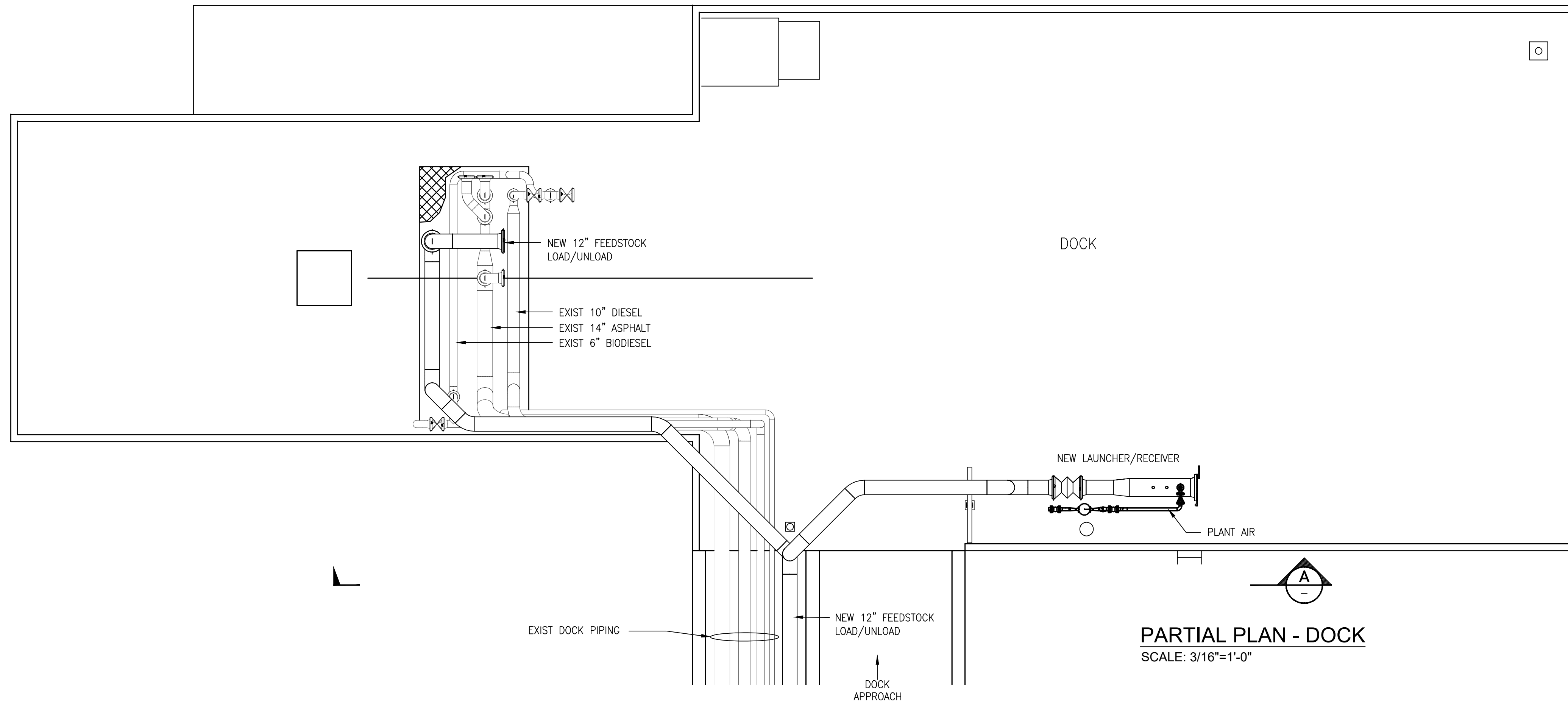
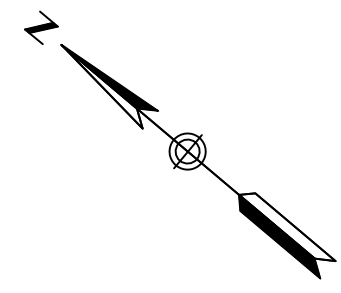
- NEW 6" STEAM (IN RACK)
- 3" CONDENSATE (IN RACK)
- 12" RD UNLOAD HEADER (UNDERGROUND)
- 12" FEEDSTOCK UNLOAD HEADER (UNDERGROUND)
- 8" RD LOAD HEADER (IN RACK)
- 8" FEEDSTOCK LOAD HEADER (IN RACK)
- 2" AIR HEADER
- 2" FIRE PROTECTION HEADER

**NORWEST ENGINEERING CONSULTING ENGINEERS**  
 PORTLAND, OREGON 503-254-0110  
 IRVINE, CALIFORNIA www.NorwestEngineering.com

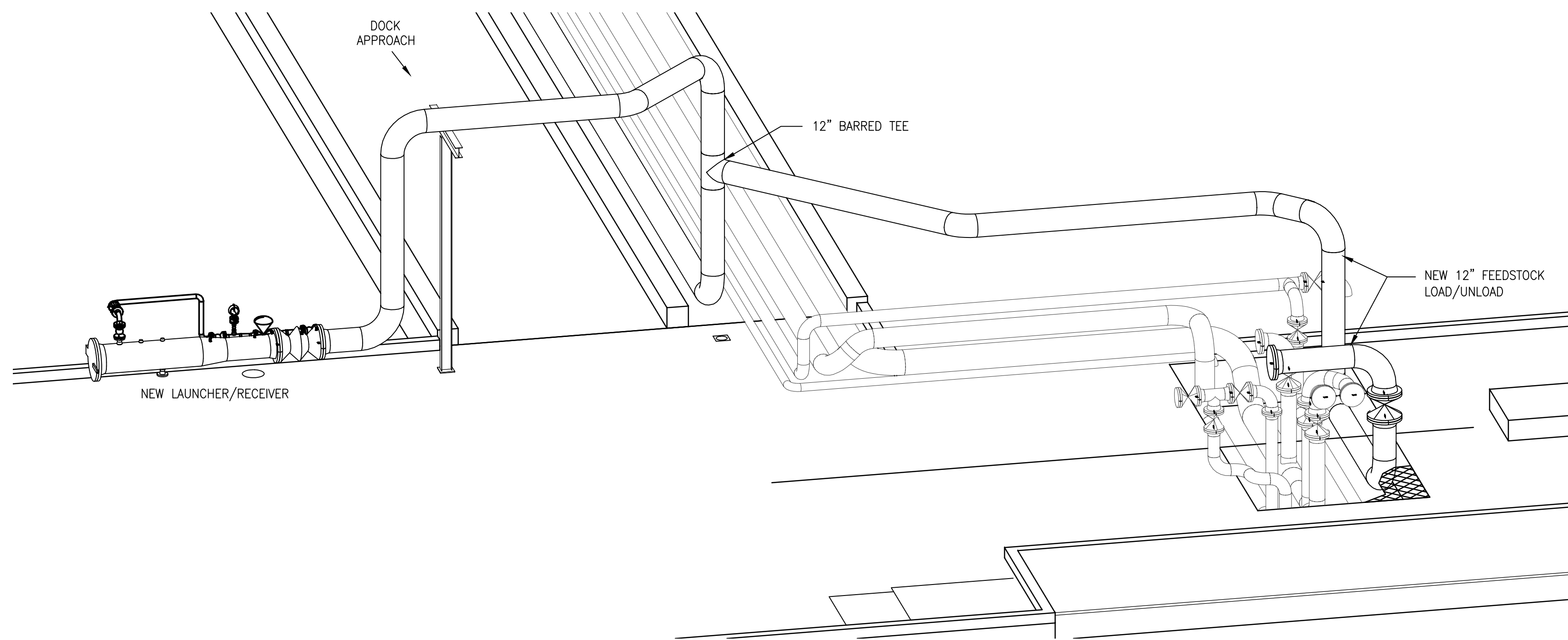
NO.	REVISION DESCRIPTION	BY	DATE	CHK	ENG
B	ISSUED FOR REVIEW	RLM	04/14/22	BLB	JAA
A	ISSUED FOR REVIEW	RJV	03/30/22	RLM	JAA

ENGINEERING RECORD	DATE
DRAWN BY: RJV	03/29/22
ENGINEERED BY: BLB	03/29/22
CHECKED BY: JAA	03/29/22
PROJECT NUMBER: RV1335	

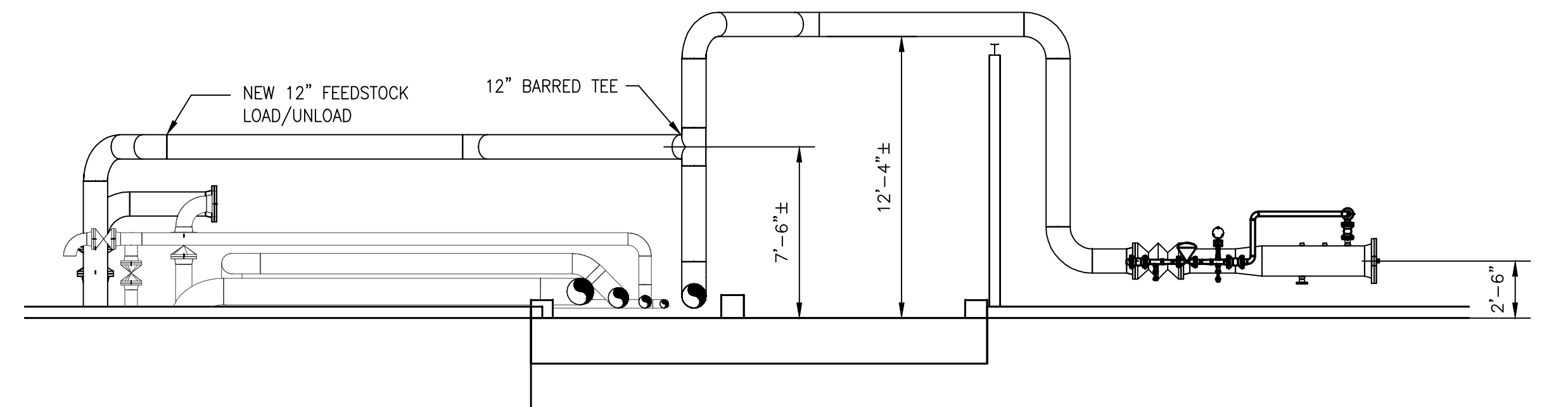
**MCCALL TERMINALS RENEWABLE FEEDSTOCK HUB MECHANICAL SITE PLAN**  
 SCALE: AS NOTED DWG. NO. D1335-SKM01 REV. B  
 EA 22-143923 APP1



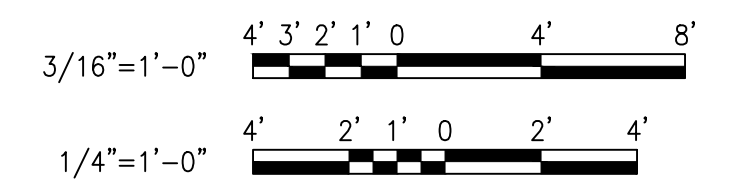
**PARTIAL PLAN - DOCK**  
SCALE: 3/16"=1'-0"



**ISOMETRIC VIEW**  
SCALE: 1/4"=1'-0"



**SECTION A-A**  
SCALE: 3/16"=1'-0"



**NORWEST ENGINEERING**  
CONSULTING ENGINEERS  
PORTLAND, OREGON 503-254-0110  
IRVINE, CALIFORNIA  
www.NorwestEngineering.com

REFERENCE | NOTES

NO.	REVISION	DESCRIPTION	BY	DATE	CHK	ENG
A	ISSUED FOR REVIEW		RJV	04/14/22	RLM	JAA

ENGINEERING RECORD	DATE
DRAWN BY: RLM	04/11/22
ENGINEERED BY: BLB	03/29/22
CHECKED BY: JAA	04/12/22

PROJECT NUMBER:  
RV1335

SCALE:  
AS NOTED

DWG.NO.  
D1335-SKM02

REV.  
A

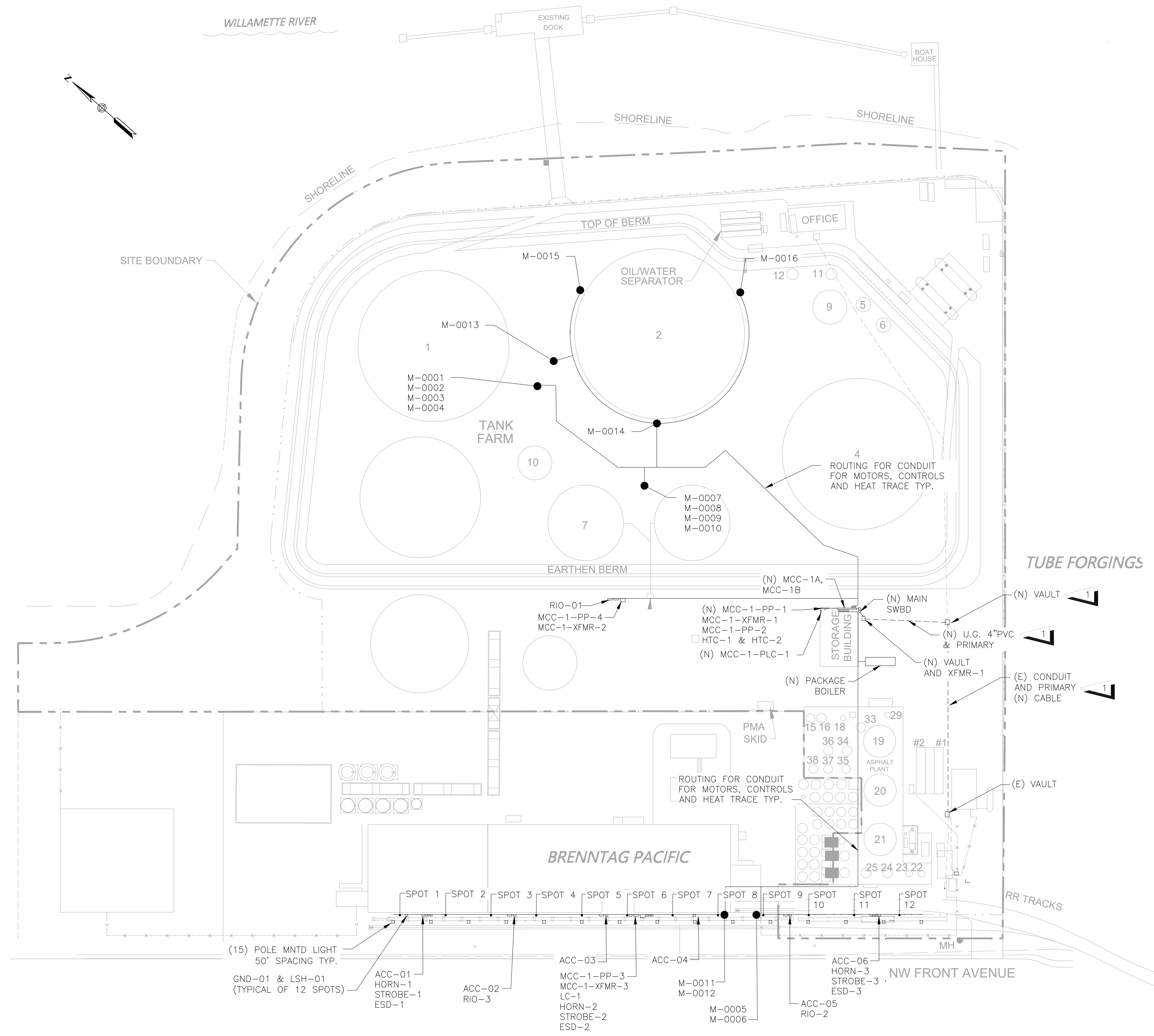
MCCALL TERMINALS  
RENEWABLE FEEDSTOCK HUB  
DOCK LAYOUT

GENERAL NOTES:

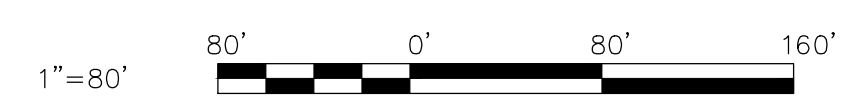
- DRAWING IS SCHEMATIC IN NATURE AND INCLUDES APPROXIMATE LOCATIONS ONLY.

SHEET NOTES:

- LOCATE AND EXPOSE (E) 12.47KV PRIMARY CONDUIT. INTERCEPT (E) PRIMARY CONDUIT. DEMO CONDUCTORS BACK TO (E) SOUTH VAULT. PROVIDE NEW CONDUIT TO NEW TRANSFORMER VAULT. VAULT(S) AND CONDUIT PROVIDED AND INSTALLED BY CONTRACTOR, CABLE, TRANSFORMER AND CTs PROVIDED AND INSTALLED BY UTILITY COMPANY. SEE D1335-E002 FOR ADDITIONAL INFORMATION.



PRELIMINARY  
NOT FOR  
CONSTRUCTION



**NORWEST ENGINEERING**  
CONSULTING ENGINEERS  
PORTLAND, OREGON | IRVINE, CALIFORNIA  
503-254-0110 | www.NorwestEngineering.com

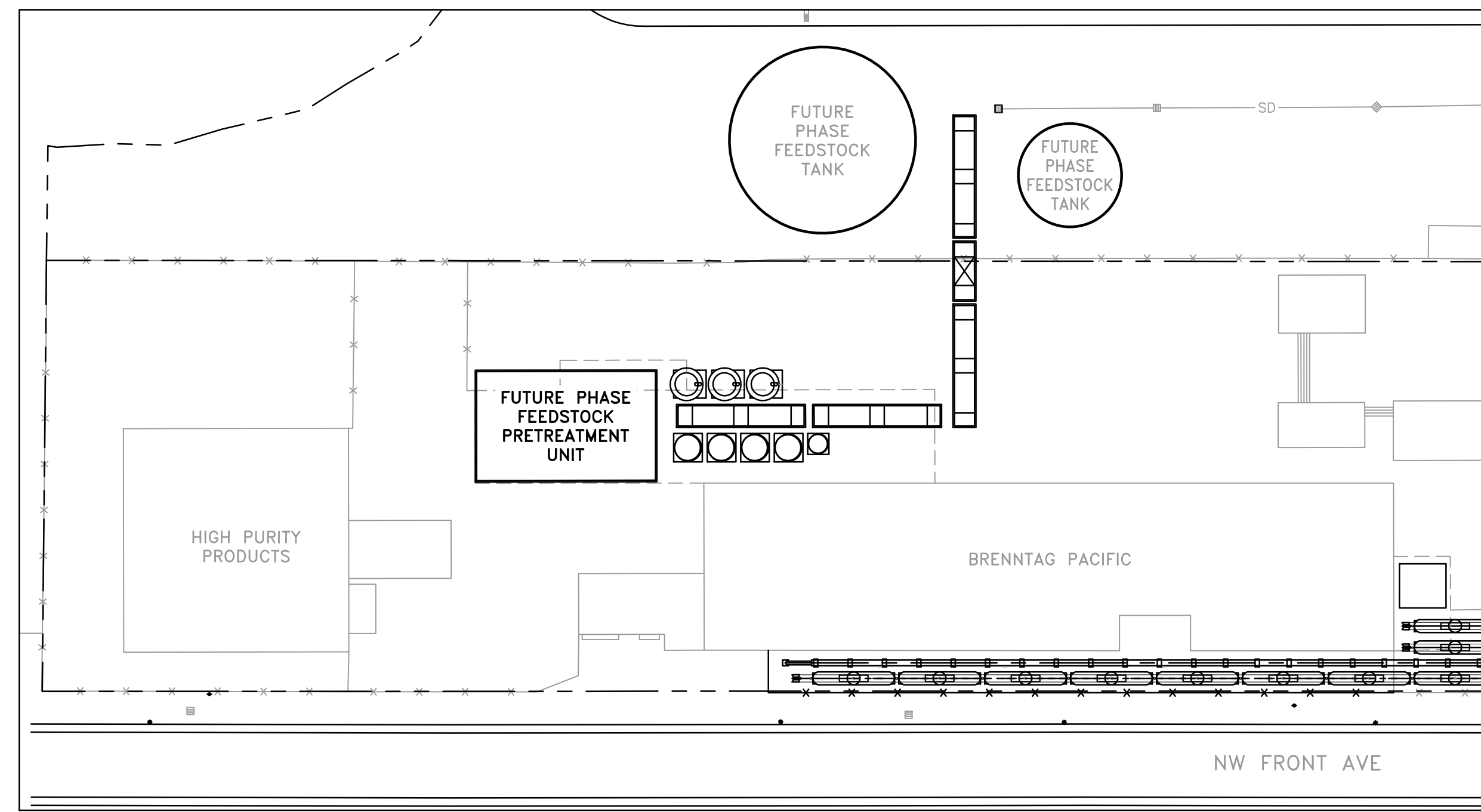
NO.	REVISION DESCRIPTION	BY	DATE	CHK	ENG
B	PRELIMINARY DESIGN	TRW	04/14/22	MAR	MAR
A	ISSUED FOR REVIEW	TRW	03/31/22	MAR	MAR

ENGINEERING RECORD	DATE
DRAWN BY: TRW	03/21/22
ENGINEERED BY: MAR	03/21/22
CHECKED BY: JMG	03/21/22

PROJECT NUMBER:	RV1335
SCALE:	1"=80'

MCCALL TERMINALS RENEWABLE FEEDSTOCK HUB ELECTRICAL SITE PLAN	
DWG. NO.	D1335-SKE01
REV.	B

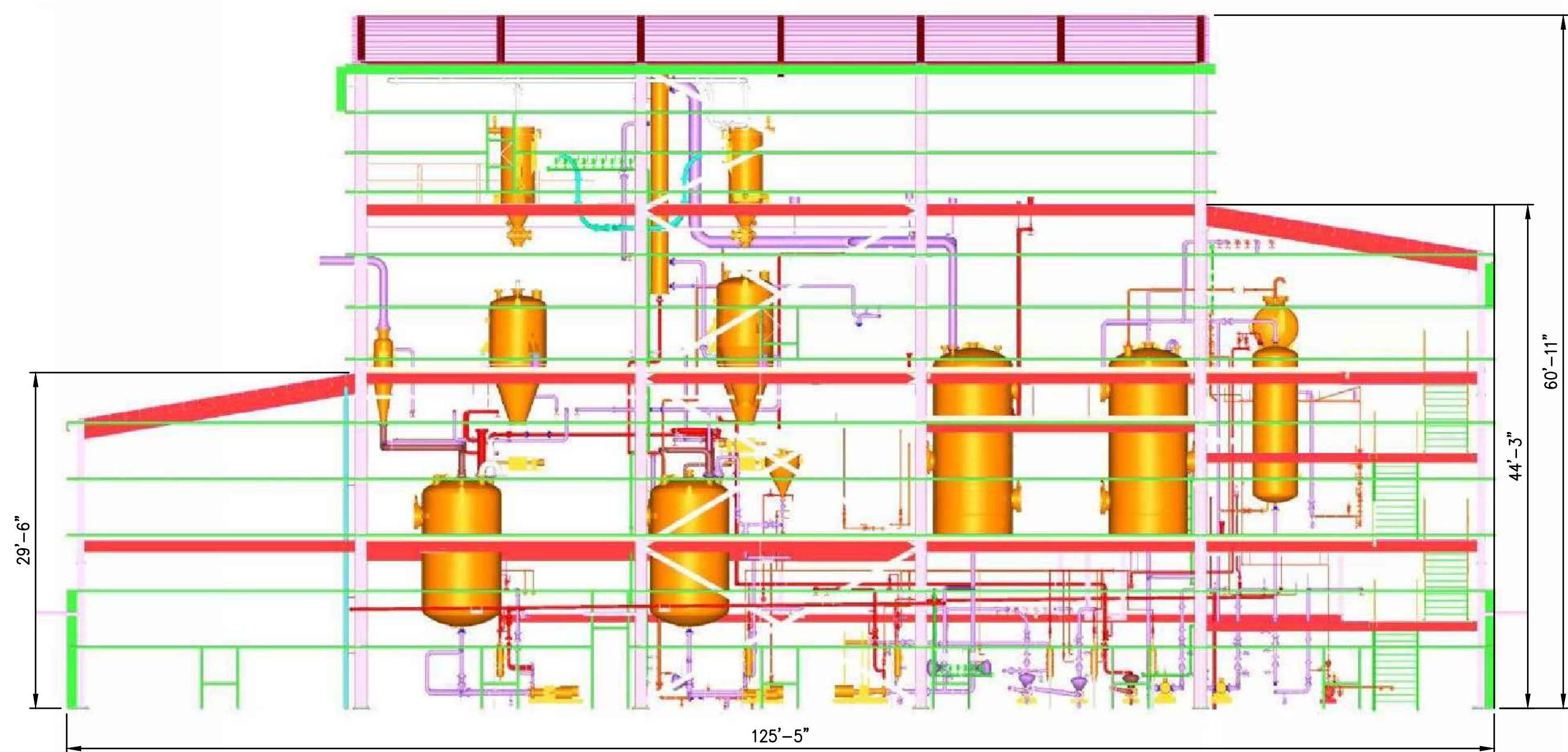




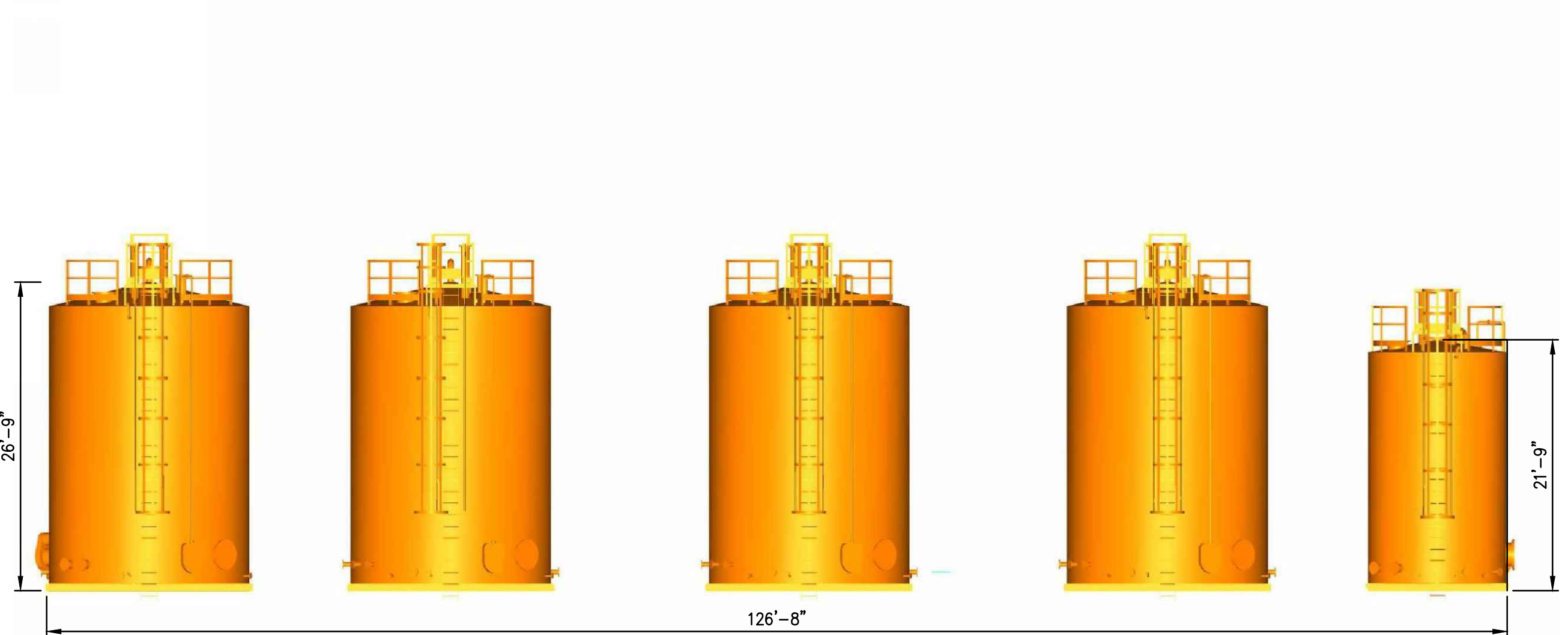
LOCATION PLAN  
1" = 80'



SOUTHEAST ELEVATION  
1" = 10'



SOUTHWEST ELEVATION  
1" = 10'



**NORWEST ENGINEERING**  
CONSULTING ENGINEERS  
PORTLAND, OREGON 503-254-0110  
IRVINE, CALIFORNIA  
www.NorwestEngineering.com

NO.	REVISION	DESCRIPTION	BY	DATE	CHK	ENG
A	ISSUED FOR REVIEW		TRM	04/27/22	TRF	JAA

ENGINEERING RECORD	DATE
DRAWN BY: TRM	04/27/22
ENGINEERED BY: ARM	04/27/22
CHECKED BY: TRF	04/27/22
PROJECT NUMBER: RV1335	

SCALE:	DWG.NO.	REV.
AS SHOWN	D1335-SKG02	A

MCCALL TERMINALS  
RENEWABLE FEEDSTOCK HUB  
PRETREATMENT BLDG ELEVATIONS