

THE PORTLAND BUILDING RECONSTRUCTION PROJECT



CONSTRUCTION COMING SOON

WHAT TO EXPECT DURING CONSTRUCTION

December 2017— end of 2020

NOISE

Neighbors may notice occasional noise from construction.

PARKING

Street parking on the Portland Building side of the block will not be available.

SAFETY

Please slow down, and obey signs and flaggers. Thank you for helping keep the work zone safe.

SIDEWALKS

Sidewalks around the building will be closed, narrowed, or altered. There will be covered walkways on SW Main and SW Madison during some phases of work.

TRAFFIC FLOW

Lanes will mostly remain open, with a few closures. Construction may cause minor delays.

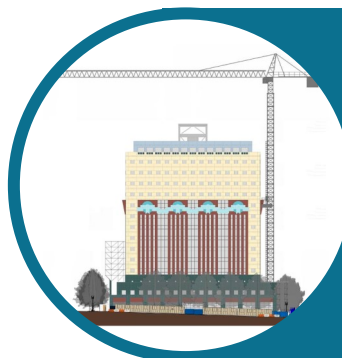
TRIMET

Stops and routes will not be impacted, with the exception of a few days. Please check Trimet's website for updates.

YOU WILL SEE



Covered walkways on SW Madison and Main, and a construction wall on SW 5th Ave will help keep pedestrians safe.



The arm of a tower crane, 269 feet above ground, will move objects during construction.



Covered scaffolding will surround the Portlandia statue to protect her during construction.

FOR MORE INFORMATION

Visit our website: www.portlandoregon.gov/portlandbuilding

Or contact Amy Higgs, 503-823-1237, amy.higgs@portlandoregon.gov



The City of Portland is committed to providing meaningful access. To request accommodations, modifications, translation, interpretation or other services, please contact 503-823-1237.