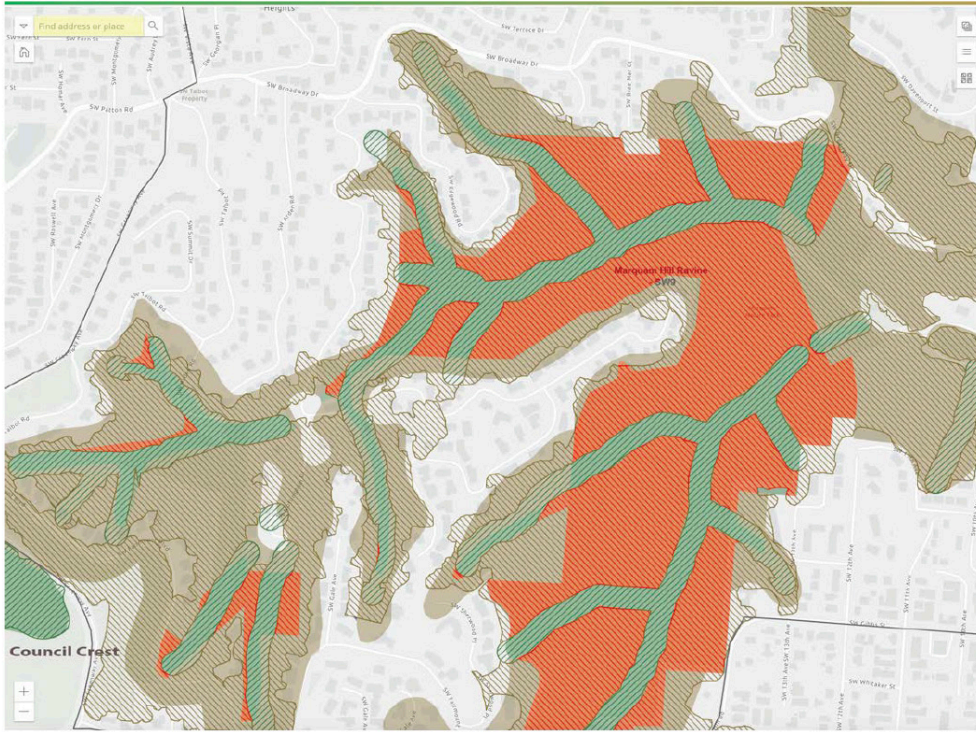


**2** PORTLAND  
SOUTHWEST HILLS:  
Marquam Hill Ravine SW9

Areas:  
Marquam Hill  
Portland Heights

Marquam Nature Park (significant)  
Next to Council Crest (top of Fanno  
Creek Watershed)



Marquam Park was incorrectly mapped. The red areas show P zones changing to C zones on proposed mapping.

All red areas should not have changed. SW9 protects with P zone all of Marquam Park.

Requesting SW10 reflect the same protection as SW9 for Marquam Park.

SW9	Stream channels to top-of-bank	protection (p)
	Land within 50 feet of the top-of-bank of streams	protection (p)
	In Marquam Hill Park, all forest vegetation	protection (p)
	Outside Marquam Nature Park, forest vegetation on steep slopes contiguous to but more than 50 feet from the top-of-bank of streams	conservation (c)
SW10	Outside Marquam Nature Park, forest vegetation contiguous to but more than 50 feet from the top-of-bank of streams	conservation (c)
	Stream channels to top-of-bank	protection (p)
	Land within 50 feet of the top-of-bank of streams	protection (p)
	Forest vegetation on steep slopes contiguous to and west of SW Terwilliger Blvd right-of-way	protection (p)
	Forest vegetation on steep slopes contiguous to but more than 50 feet from the top-of-bank of streams	conservation (c)
	Forest vegetation on steep slopes contiguous to and east of SW Terwilliger Blvd right-of-way	conservation (c)
	Forest vegetation on steep slopes contiguous to SW Barbur Blvd or Interstate 5 right-of-way	conservation (c)
In the Central Employment (EX) base zone, forest vegetation on steep slopes	conservation (c)	

