



MEMO

DATE: April 12, 2022
TO: City Council
FROM: Daniel Soebbing, City Planner, Project Manager
Emma Kohlsmith, Environmental Planner
CC: Eric Engstrom
SUBJECT: Edits to Natural Resource Mapping – Part 2

Ezone Project staff received a last-minute request to review the draft ezones that are mapped on Water Bureau facilities in 15 different locations around the Ezone Project area. After reviewing the natural resource mapping on the various sites, project staff are proposing 9 edits to vegetation mapping. The proposed edits would improve the accuracy of the natural resource mapping. If the amended natural resource mapping is approved, the draft ezones will be amended to reflect the changes in the natural resource mapping. The proposed amendments to the natural resource mapping are detailed in the following memo. The memo consists of a table that lists each of the proposed vegetation edits, and maps that demonstrate the nature and location of the proposed edits.

Map Page Number	Property Owner Last Name	Property Owner First Name	Property Address	State ID	Testified	Resource Site	Natural Resource Features	Protection Decisions	Site Visit Date	Site Visit Results
Page 1-2	City of Portland		SW Marquam Hill Rd	1S1E09BD 6500	No	SW9	Forest Vegetation	Apply the highest level of protection (p zone) forest vegetation in Marquam Park.	Remote correction. Completed by staff using LiDAR and aerial imagery	Remap forest vegetation to exclude a single line of trees and low structure canopy.
Page 3-4	City of Portland		SW Broadway Dr	1S1E09BD 6500	No	SW9	Forest Vegetation	Apply a lower level of protection (c zone) forest vegetation contiguous to streams.	Remote correction. Completed by staff using LiDAR and aerial imagery	Remap forest vegetation to exclude an area that is clearly and obviously not covered by forest canopy.
Page 5-6	City of Portland		SW Gibbs St	1S1E10 600	No	SW10	Forest Vegetation	Apply a lower level of protection (c zone) forest vegetation contiguous to streams, and to forest vegetation on steep slopes contiguous to Barbur Blvd	Remote correction. Completed by staff using aerial imagery and Google Street View	Edit forest vegetation mapping to reflect a gap in the forest canopy. It is clearly visible in the aerial imagery and street view images that the trees on the north side of SW Gibbs St are separate from the larger forest patch.
Page 7-8	City of Portland		NW Alexandria	1N1E30D 100	No	FP28	Forest Vegetation Stream Riparian Area	Apply the highest level of protection (p zone) forest vegetation in Forest Park and to streams and land within 50 feet of streams.	Remote correction. Completed by staff using aerial imagery.	Edit forest vegetation mapping to follow dripline of forest vegetation.
Page 9-10	City of Portland		3229 NW Monte Vista Ter	1N1E32CB 100	No	SW3	Forest Vegetation	Apply the highest level of protection (p zone) to forest vegetation in Forest Park.	Remote correction. Completed by staff using aerial imagery.	Edit forest vegetation mapping to follow dripline of forest vegetation.
Page 11-12	City of Portland		SE Tenino Ct	12E28AB01200	No	BL1	Forest Vegetation	Apply a lower level of protection (c zone) to forest vegetation.	Remote correction. Completed by staff using aerial imagery.	Edit forest vegetation mapping to exclude areas that clearly and obviously are not covered by forest canopy.
Page 13-14	City of Portland		11525 NW WILLALATIN RD	1N1W10D 500	No	FP9	Forest Vegetation Herbaceous Vegetation	Apply the highest level of protection (p zone) to all vegetation in Forest Park.	Remote correction. Completed by staff using aerial imagery.	Explanation: Edit forest and herbaceous vegetation to exclude areas that are not covered by vegetation.
Page 15-16	ODOT		3536 NE ROCKY BUTTE RD	1N2E21D 200	No	EB11	Forest Vegetation Steep Slopes	Apply the highest level of protection (p zone) to forest vegetation on steep slopes. Apply a lower level of protection (c zone) to forest vegetation not on steep slopes.	Remote correction. Completed by staff using aerial imagery.	Edit forest vegetation mapping to exclude areas that clearly and obviously are not covered by forest canopy.
Page 17-18	City of Portland		Powell Butte	1S2E12 700	No	JC23	Forest Vegetation Herbaceous Vegetation	Apply the highest level of protection (p zone) to forest vegetation. Apply a lower level of protection (c zone) to all other vegetation.	Remote correction. Completed by staff using aerial imagery.	Edit forest vegetation mapping to exclude non-vegetated gravel and paved areas.



**Environmental Overlay Zone
Map Correction Project**

Natural Resources - Before
1S1E09BD 6500



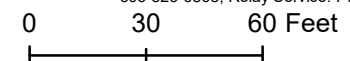
Legend

-  taxlots
-  forest
-  woodland
-  shrubland
-  herbaceous

DRAFT

April 12, 2022

The information on the map was derived from digital databases. Care was taken in the creation of this map but it is provided "as is". The City of Portland ensures meaningful access to city programs, services, and activities to comply with Civil Rights Title VI and ADA Title II laws and reasonably provides: translation, interpretation, modifications, accommodations, alternative formats, auxiliary aids and services. To request these services, contact 503-823-7700, City TTY 503-823-6868, Relay Service: 711.





Environmental Overlay Zone Map Correction Project

Natural Resources - After
1S1E09BD 6500

Explanation: Edit forest vegetation mapping to exclude a narrow line of trees and low structure vegetation that are not contiguous to the larger forest patch.



Legend

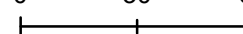
-  taxlots
-  forest
-  woodland
-  shrubland
-  herbaceous

DRAFT

April 12, 2022

The information on the map was derived from digital databases. Care was taken in the creation of this map but it is provided "as is". The City of Portland ensures meaningful access to city programs, services, and activities to comply with Civil Rights Title VI and ADA Title II laws and reasonably provides: translation, interpretation, modifications, accommodations, alternative formats, auxiliary aids and services. To request these services, contact 503-823-7700, City TTY 503-823-6868, Relay Service: 711.

0 30 60 Feet





**Environmental Overlay Zone
Map Correction Project**

**Natural Resources - Before
1S1E09AB 1700**



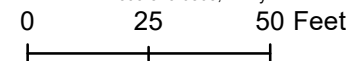
Legend

-  taxlots
-  forest
-  woodland
-  shrubland
-  herbaceous

DRAFT

April 12, 2022

The information on the map was derived from digital databases. Care was taken in the creation of this map but it is provided "as is". The City of Portland ensures meaningful access to city programs, services, and activities to comply with Civil Rights Title VI and ADA Title II laws and reasonably provides: translation, interpretation, modifications, accommodations, alternative formats, auxiliary aids and services. To request these services, contact 503-823-7700, City TTY 503-823-6868, Relay Service: 711.





Environmental Overlay Zone Map Correction Project

Natural Resources - After
1S1E09AB 1700

Explanation: Edit forest vegetation
mapping to exclude an area that is
clearly not covered by forest canopy.



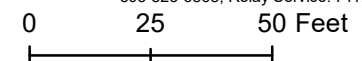
Legend

-  taxlots
-  forest
-  woodland
-  shrubland
-  herbaceous

DRAFT

April 12, 2022

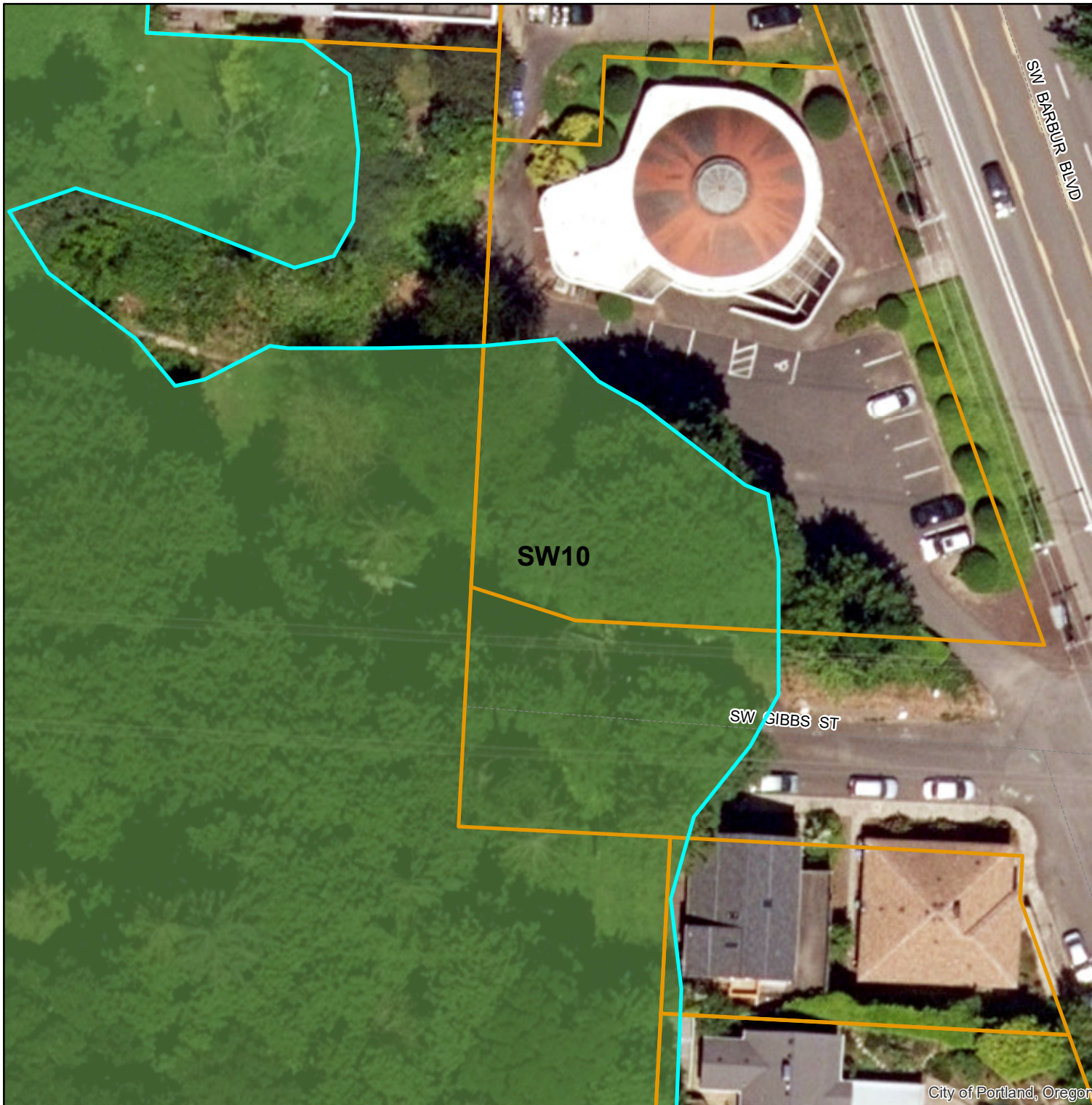
The information on the map was derived from digital databases. Care was taken in the creation of this map but it is provided "as is". The City of Portland ensures meaningful access to city programs, services, and activities to comply with Civil Rights Title VI and ADA Title II laws and reasonably provides: translation, interpretation, modifications, accommodations, alternative formats, auxiliary aids and services. To request these services, contact 503-823-7700, City TTY 503-823-6868, Relay Service: 711.





**Environmental Overlay Zone
Map Correction Project**

Natural Resources - Before
1S1E10 600



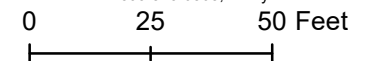
Legend

-  taxlots
-  forest
-  woodland
-  shrubland
-  herbaceous

DRAFT

April 12, 2022

The information on the map was derived from digital databases. Care was taken in the creation of this map but it is provided "as is". The City of Portland ensures meaningful access to city programs, services, and activities to comply with Civil Rights Title VI and ADA Title II laws and reasonably provides: translation, interpretation, modifications, accommodations, alternative formats, auxiliary aids and services. To request these services, contact 503-823-7700, City TTY 503-823-6868, Relay Service: 711.



**Environmental Overlay Zone
Map Correction Project**

**Natural Resources - After
1S1E10 600**

Explanation: Edit forest vegetation mapping to reflect a gap in the forest canopy. It is clearly visible in the aerial imagery and street view images that the trees on the north side of SW Gibbs St are separate from the larger forest patch.



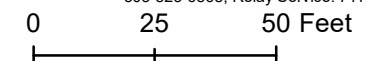
Legend

-  taxlots
-  forest
-  woodland
-  shrubland
-  herbaceous

DRAFT

April 12, 2022

The information on the map was derived from digital databases. Care was taken in the creation of this map but it is provided "as is". The City of Portland ensures meaningful access to city programs, services, and activities to comply with Civil Rights Title VI and ADA Title II laws and reasonably provides: translation, interpretation, modifications, accommodations, alternative formats, auxiliary aids and services. To request these services, contact 503-823-7700, City TTY 503-823-6868, Relay Service: 711.







Environmental Overlay Zone Map Correction Project

Natural Resources - Before
1N1E30D 100



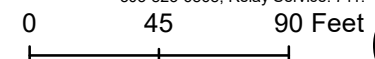
Legend

-  taxlots
-  piped stream segment
-  open stream channel
-  Wetlands
-  building footprints
-  forest
-  woodland
-  shrubland
-  herbaceous

DRAFT

April 12, 2022

The information on the map was derived from digital databases. Care was taken in the creation of this map but it is provided "as is". The City of Portland ensures meaningful access to city programs, services, and activities to comply with Civil Rights Title VI and ADA Title II laws and reasonably provides: translation, interpretation, modifications, accommodations, alternative formats, auxiliary aids and services. To request these services, contact 503-823-7700, City TTY 503-823-6868, Relay Service: 711.





Environmental Overlay Zone Map Correction Project

Natural Resources - After
1N1E30D 100

Explanation: Edit forest vegetation
mapping to follow dripline of canopy.



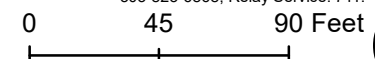
Legend

-  taxlots
-  piped stream segment
-  open stream channel
-  Wetlands
-  building footprints
-  forest
-  woodland
-  shrubland
-  herbaceous

DRAFT

April 12, 2022

The information on the map was derived from digital databases. Care was taken in the creation of this map but it is provided "as is". The City of Portland ensures meaningful access to city programs, services, and activities to comply with Civil Rights Title VI and ADA Title II laws and reasonably provides: translation, interpretation, modifications, accommodations, alternative formats, auxiliary aids and services. To request these services, contact 503-823-7700, City TTY 503-823-6868, Relay Service: 711.



FP33

FP34



THE BUREAU OF
**PLANNING &
SUSTAINABILITY**

Environmental Overlay Zone Map Correction Project

Natural Resources - Before
1N1E32CB 100



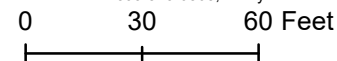
Legend

-  taxlots
-  forest
-  woodland
-  shrubland
-  herbaceous

DRAFT

April 12, 2022

The information on the map was derived from digital databases. Care was taken in the creation of this map but it is provided "as is". The City of Portland ensures meaningful access to city programs, services, and activities to comply with Civil Rights Title VI and ADA Title II laws and reasonably provides: translation, interpretation, modifications, accommodations, alternative formats, auxiliary aids and services. To request these services, contact 503-823-7700, City TTY 503-823-6868, Relay Service: 711.



FP33

FP34



THE BUREAU OF
**PLANNING &
SUSTAINABILITY**

Environmental Overlay Zone Map Correction Project

Natural Resources - After
1N1E32CB 100

Explanation: Edit forest vegetation
mapping to follow dripline of canopy.



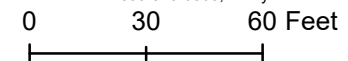
Legend

-  taxlots
-  forest
-  woodland
-  shrubland
-  herbaceous

DRAFT

April 12, 2022

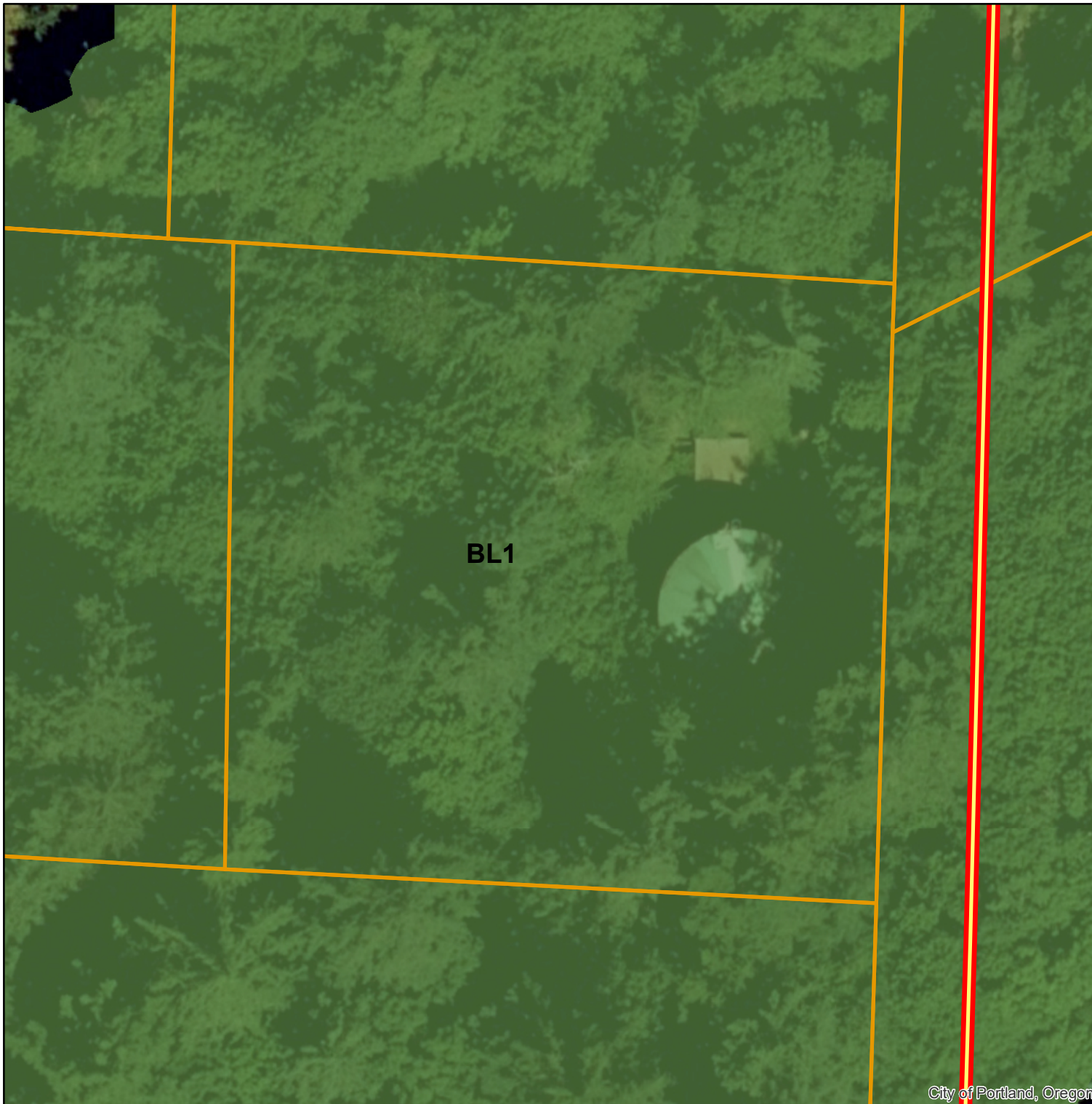
The information on the map was derived from digital databases. Care was taken in the creation of this map but it is provided "as is". The City of Portland ensures meaningful access to city programs, services, and activities to comply with Civil Rights Title VI and ADA Title II laws and reasonably provides: translation, interpretation, modifications, accommodations, alternative formats, auxiliary aids and services. To request these services, contact 503-823-7700, City TTY 503-823-6868, Relay Service: 711.





**Environmental Overlay Zone
Map Correction Project**

Natural Resources - Before
12E28AB01200



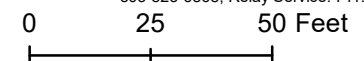
Legend

-  taxlots
-  forest
-  woodland
-  shrubland
-  herbaceous

DRAFT

April 12, 2022

The information on the map was derived from digital databases. Care was taken in the creation of this map but it is provided "as is". The City of Portland ensures meaningful access to city programs, services, and activities to comply with Civil Rights Title VI and ADA Title II laws and reasonably provides: translation, interpretation, modifications, accommodations, alternative formats, auxiliary aids and services. To request these services, contact 503-823-7700, City TTY 503-823-6868, Relay Service: 711.

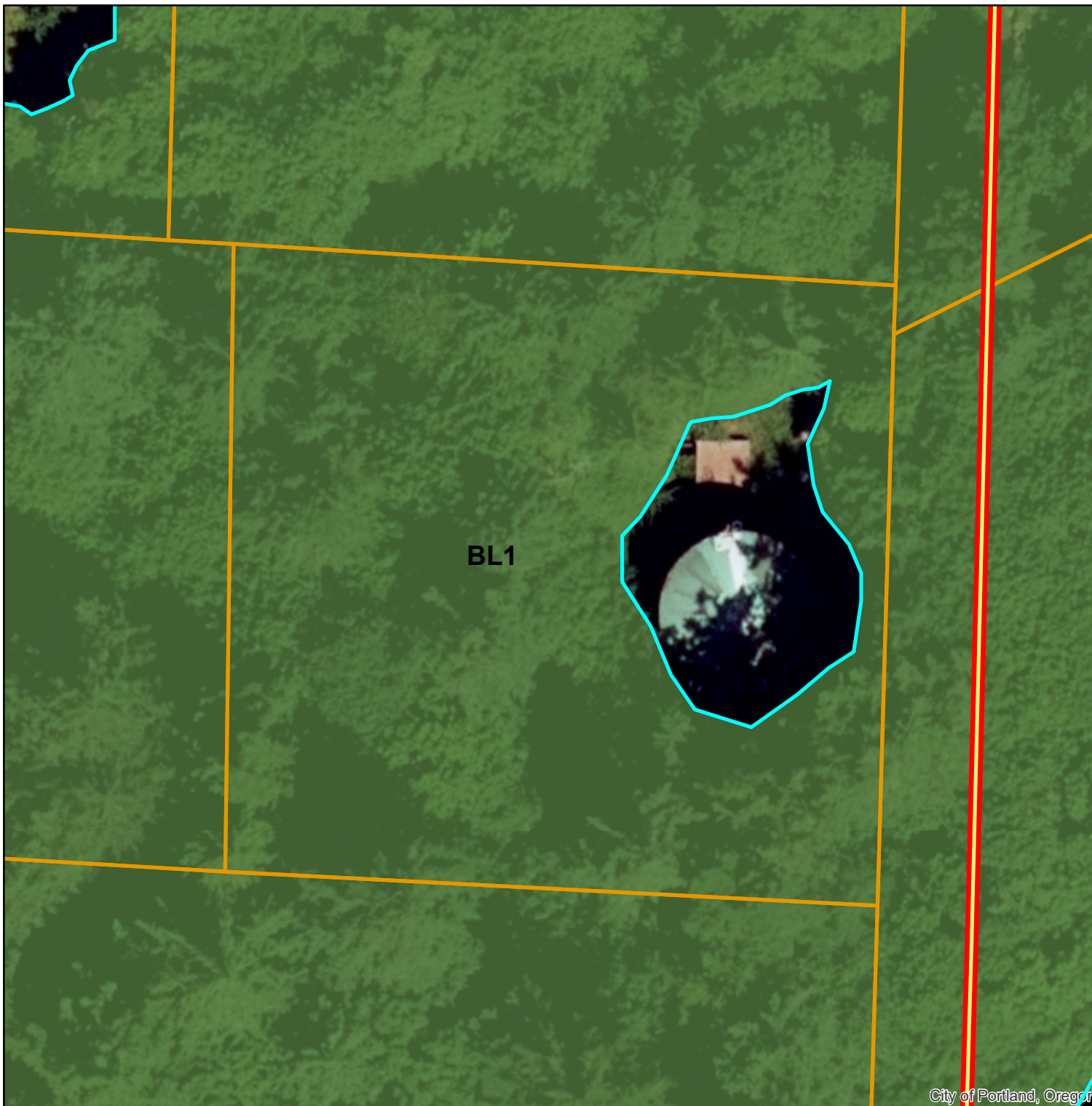




Environmental Overlay Zone Map Correction Project

Natural Resources - After
12E28AB01200

Explanation: Edit forest vegetation mapping to exclude areas that clearly and obviously are not covered by forest canopy.



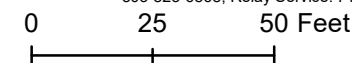
Legend

-  taxlots
-  forest
-  woodland
-  shrubland
-  herbaceous

DRAFT

April 12, 2022

The information on the map was derived from digital databases. Care was taken in the creation of this map but it is provided "as is". The City of Portland ensures meaningful access to city programs, services, and activities to comply with Civil Rights Title VI and ADA Title II laws and reasonably provides: translation, interpretation, modifications, accommodations, alternative formats, auxiliary aids and services. To request these services, contact 503-823-7700, City TTY 503-823-6868, Relay Service: 711.





**Environmental Overlay Zone
Map Correction Project**

Natural Resources - Before
1N1W10D 500



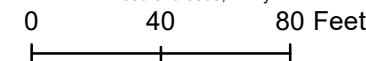
Legend

-  taxlots
-  forest
-  woodland
-  shrubland
-  herbaceous

DRAFT

April 12, 2022

The information on the map was derived from digital databases. Care was taken in the creation of this map but it is provided "as is". The City of Portland ensures meaningful access to city programs, services, and activities to comply with Civil Rights Title VI and ADA Title II laws and reasonably provides: translation, interpretation, modifications, accommodations, alternative formats, auxiliary aids and services. To request these services, contact 503-823-7700, City TTY 503-823-6868, Relay Service: 711.

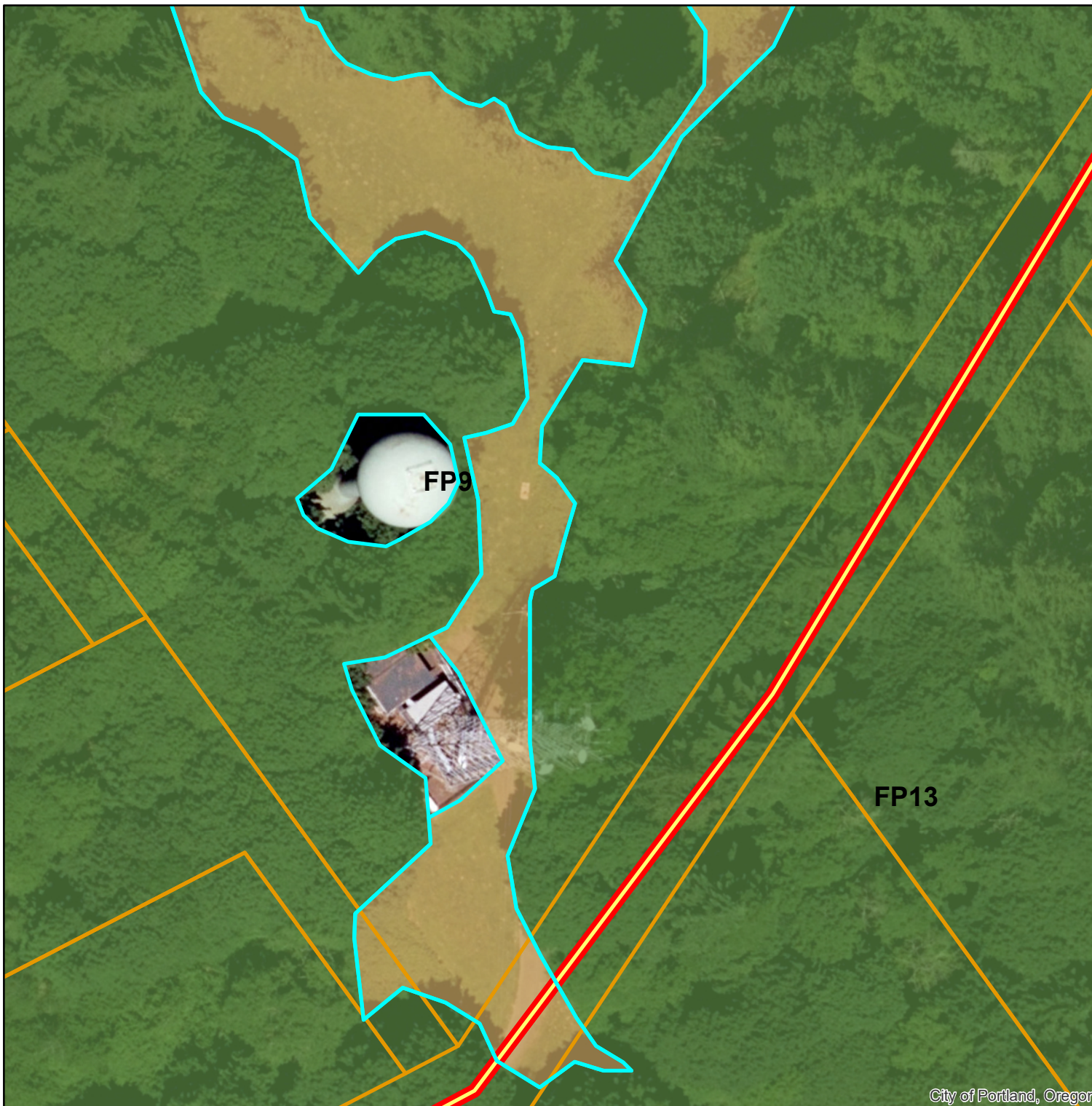




Environmental Overlay Zone Map Correction Project

Natural Resources - After
1N1W10D 500

Explanation: Edit forest and
herbaceous vegetation to
exclude areas that are not
covered by vegetation.



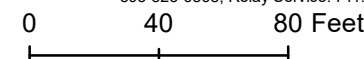
Legend

-  taxlots
-  forest
-  woodland
-  shrubland
-  herbaceous

DRAFT

April 12, 2022

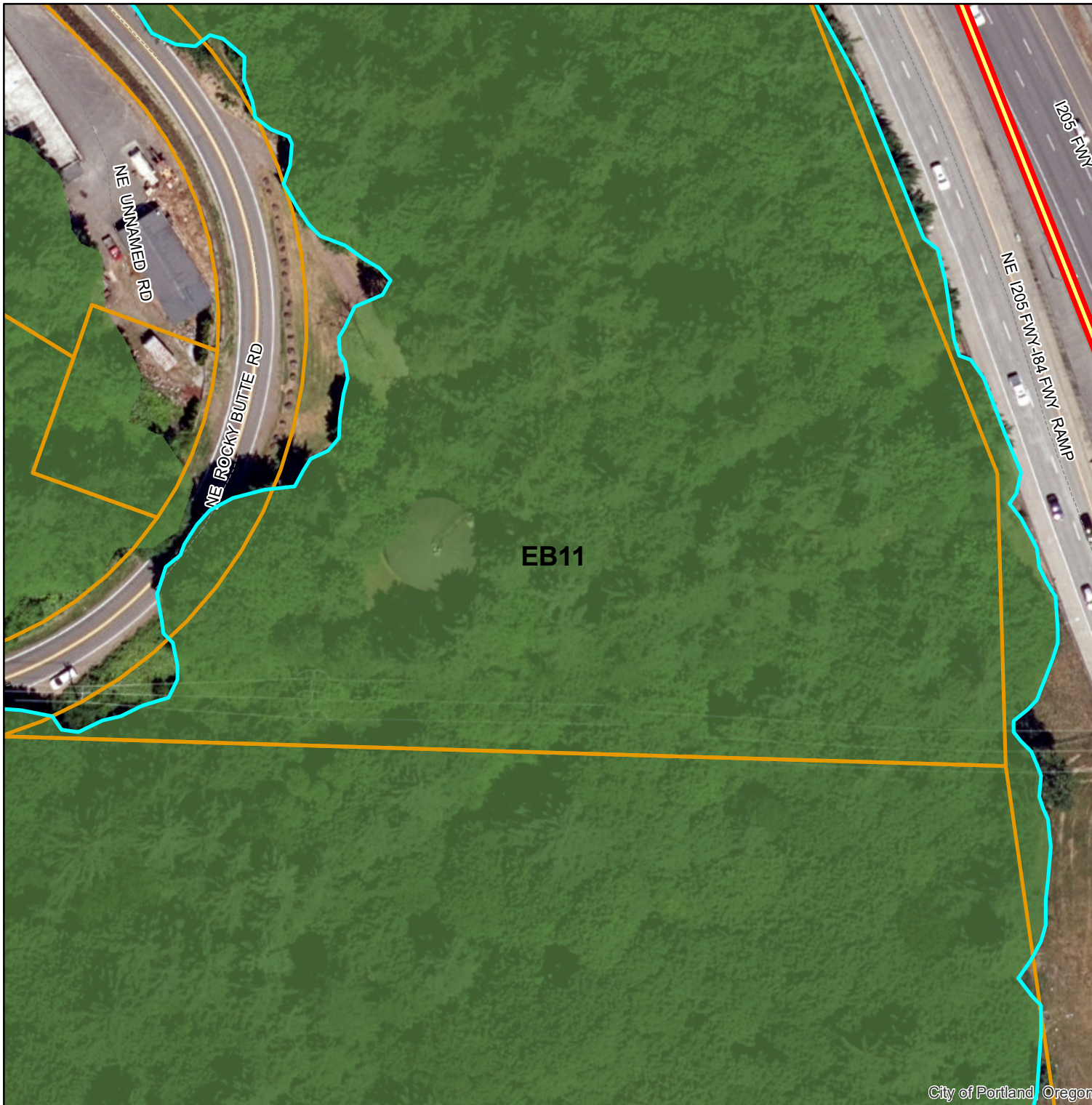
The information on the map was derived from digital databases. Care was taken in the creation of this map but it is provided "as is". The City of Portland ensures meaningful access to city programs, services, and activities to comply with Civil Rights Title VI and ADA Title II laws and reasonably provides: translation, interpretation, modifications, accommodations, alternative formats, auxiliary aids and services. To request these services, contact 503-823-7700, City TTY 503-823-6868, Relay Service: 711.





Environmental Overlay Zone Map Correction Project

Natural Resources - Before
1N2E21D 200



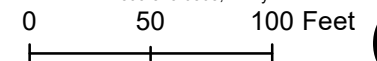
Legend

-  taxlots
-  forest
-  woodland
-  shrubland
-  herbaceous

DRAFT

April 12, 2022

The information on the map was derived from digital databases Care was taken in the creation of this map but it is provided "as is". The City of Portland ensures meaningful access to city programs, services, and activities to comply with Civil Rights Title VI and ADA Title II laws and reasonably provides: translation, interpretation, modifications, accommodations, alternative formats, auxiliary aids and services. To request these services, contact 503-823-7700, City TTY 503-823-6868, Relay Service: 711.

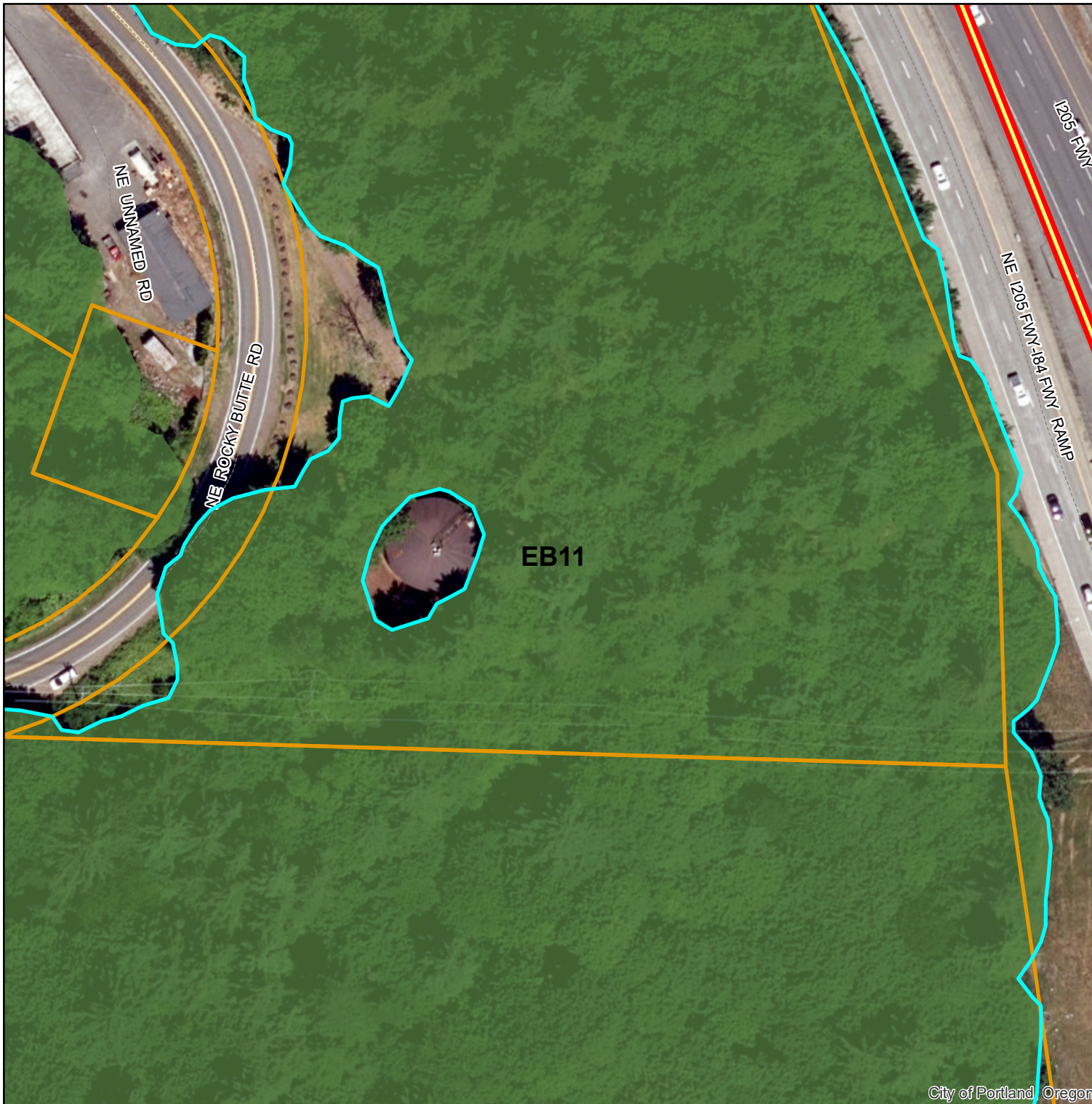




Environmental Overlay Zone Map Correction Project

Natural Resources - After
1N2E21D 200

**Explanation: Edit forest
vegetation to exclude areas
that are not covered by tree
canopy.**



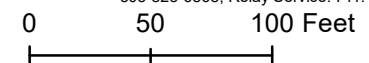
Legend

-  taxlots
-  forest
-  woodland
-  shrubland
-  herbaceous

DRAFT

April 12, 2022

The information on the map was derived from digital databases. Care was taken in the creation of this map but it is provided "as is". The City of Portland ensures meaningful access to city programs, services, and activities to comply with Civil Rights Title VI and ADA Title II laws and reasonably provides: translation, interpretation, modifications, accommodations, alternative formats, auxiliary aids and services. To request these services, contact 503-823-7700, City TTY 503-823-6868, Relay Service: 711.





**Environmental Overlay Zone
Map Correction Project**

Natural Resources - Before
1S2E12 700



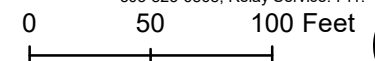
Legend

-  taxlots
-  forest
-  woodland
-  shrubland
-  herbaceous

DRAFT

April 12, 2022

The information on the map was derived from digital databases. Care was taken in the creation of this map but it is provided "as is". The City of Portland ensures meaningful access to city programs, services, and activities to comply with Civil Rights Title VI and ADA Title II laws and reasonably provides: translation, interpretation, modifications, accommodations, alternative formats, auxiliary aids and services. To request these services, contact 503-823-7700, City TTY 503-823-6868, Relay Service: 711.





**Environmental Overlay Zone
Map Correction Project**

**Natural Resources - After
1S2E12 700**

**Explanation: Edit vegetation
mapping to exclude gravel
covered areas and paved
streets.**



Legend

-  taxlots
-  forest
-  woodland
-  shrubland
-  herbaceous

DRAFT

April 12, 2022

The information on the map was derived from digital databases. Care was taken in the creation of this map but it is provided "as is". The City of Portland ensures meaningful access to city programs, services, and activities to comply with Civil Rights Title VI and ADA Title II laws and reasonably provides: translation, interpretation, modifications, accommodations, alternative formats, auxiliary aids and services. To request these services, contact 503-823-7700, City TTY 503-823-6868, Relay Service: 711.

