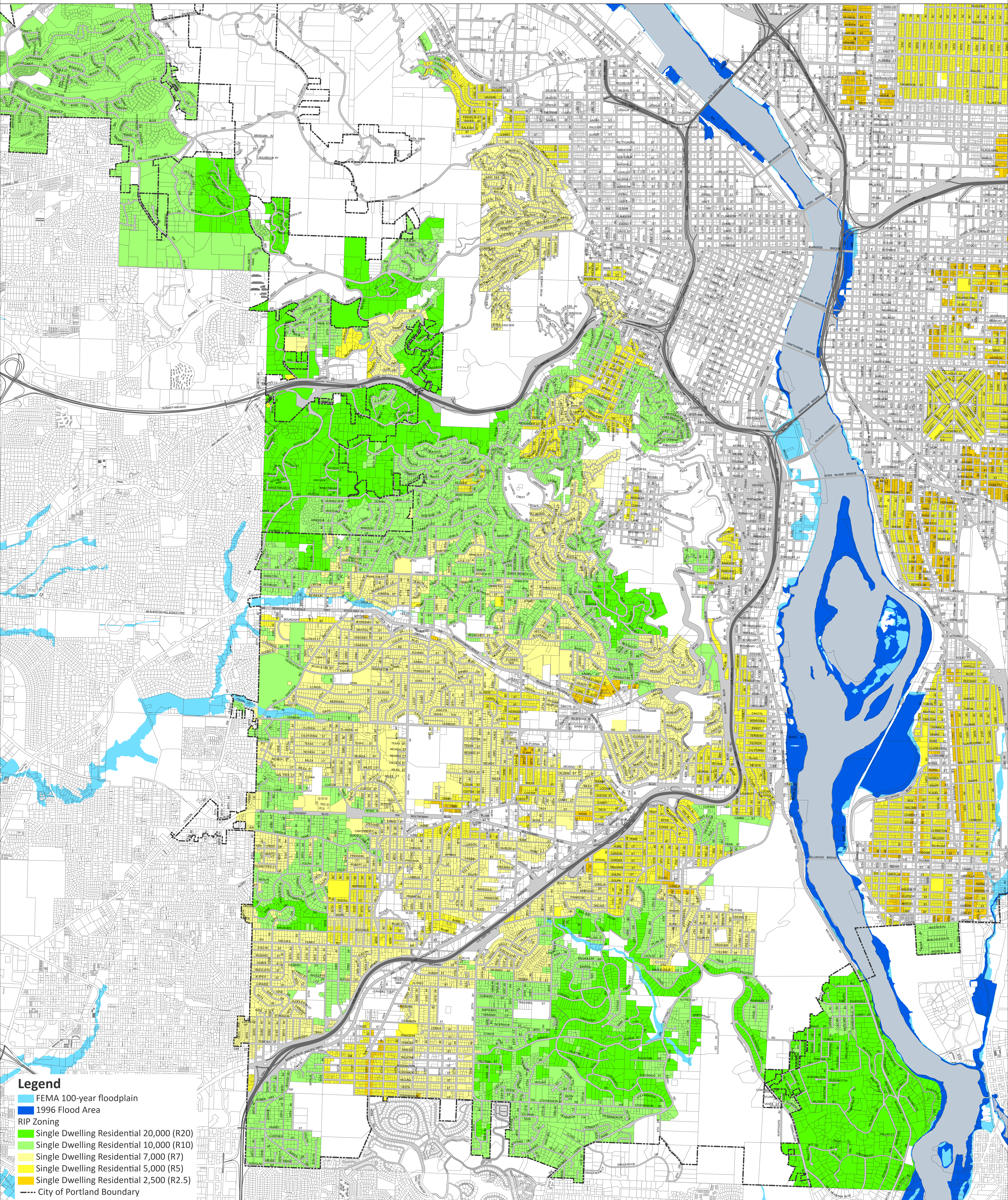


RIP 2 'z' Overlay - Flood Hazard Component

West

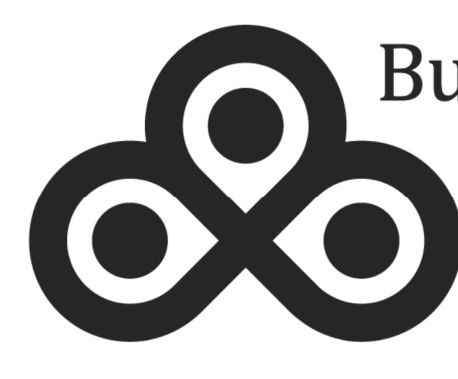


- Legend**
- FEMA 100-year floodplain
 - 1996 Flood Area
 - RIP Zoning
 - Single Dwelling Residential 20,000 (R20)
 - Single Dwelling Residential 10,000 (R10)
 - Single Dwelling Residential 7,000 (R7)
 - Single Dwelling Residential 5,000 (R5)
 - Single Dwelling Residential 2,500 (R2.5)
 - City of Portland Boundary

March 17, 2022
City of Portland, Oregon // Bureau of Planning & Sustainability // Geographic Information System

The information on this map was derived from City of Portland GIS databases. Care was taken in the creation of this map but it is provided "as is". The City of Portland cannot accept any responsibility for error, omissions or positional accuracy.

The City of Portland ensures meaningful access to city programs, services and activities to comply with Civil Rights Title VI and ADA Title II laws and reasonably provides: translation, interpretation, modifications, accommodations, alternative formats, auxiliary aids and services. To request these services, contact 503-823-7700, City TTY: 503-823-6868, Relay Service: 711.



Bureau of Planning and Sustainability
Innovation. Collaboration. Practical Solutions.

City of Portland, Oregon



E:\Dropbox (BPS Tech Services)\BPS Tech Services Team Folder\gis\projects\Residential_Infill_2\Maps\RIP2_z_overlay_district_maps_220304\RIP2_z_overlay_district_maps_220304.aprx