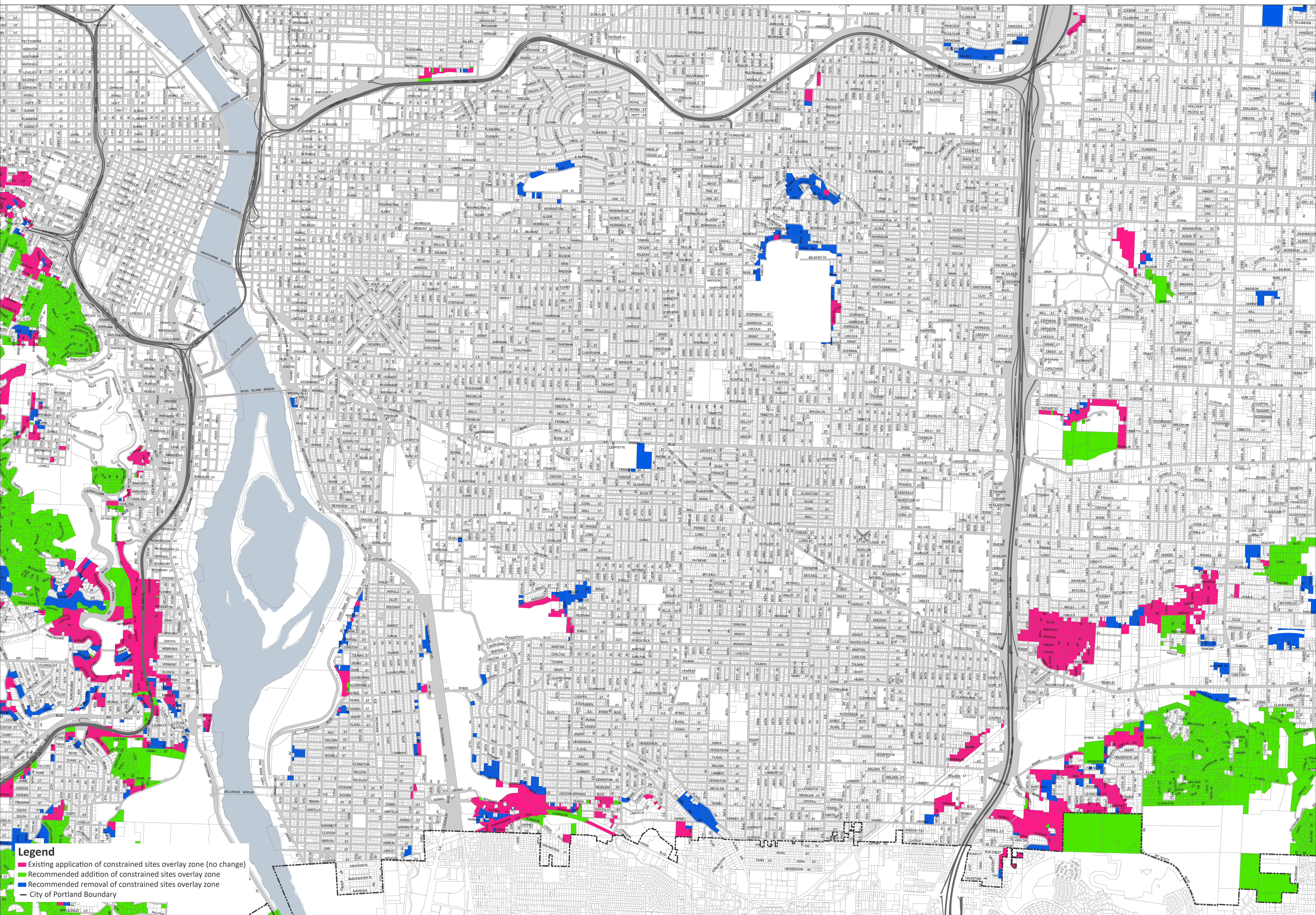


Recommended 'z' Overlay

Southeast



Legend

- Existing application of constrained sites overlay zone (no change)
- Recommended addition of constrained sites overlay zone
- Recommended removal of constrained sites overlay zone
- City of Portland Boundary

March 4, 2022
 City of Portland, Oregon // Bureau of Planning & Sustainability // Geographic Information System
 The information on this map was derived from City of Portland GIS databases. Care was taken in the creation of this map but it is provided "as is". The City of Portland cannot accept any responsibility for error, omissions or positional accuracy.

The City of Portland ensures meaningful access to city programs, services, and activities to comply with Civil Rights Title VI and ADA Title II laws and reasonably provides: translation, interpretation, modifications, accommodations, alternative formats, auxiliary aids and services. To request these services, contact 503-823-7700, City TTY 503-823-6868, Relay Service: 711.



Bureau of Planning and Sustainability
 Innovation. Collaboration. Practical Solutions.
 City of Portland, Oregon



E:\Dropbox (BPS Tech Services)\BPS Tech Services Team Folder\gis\projects\Residential_Infill_z\Map9\RI2_z_overlay_distinct_maps_202004\RI2_z_overlay_distinct_maps_202004.aprx