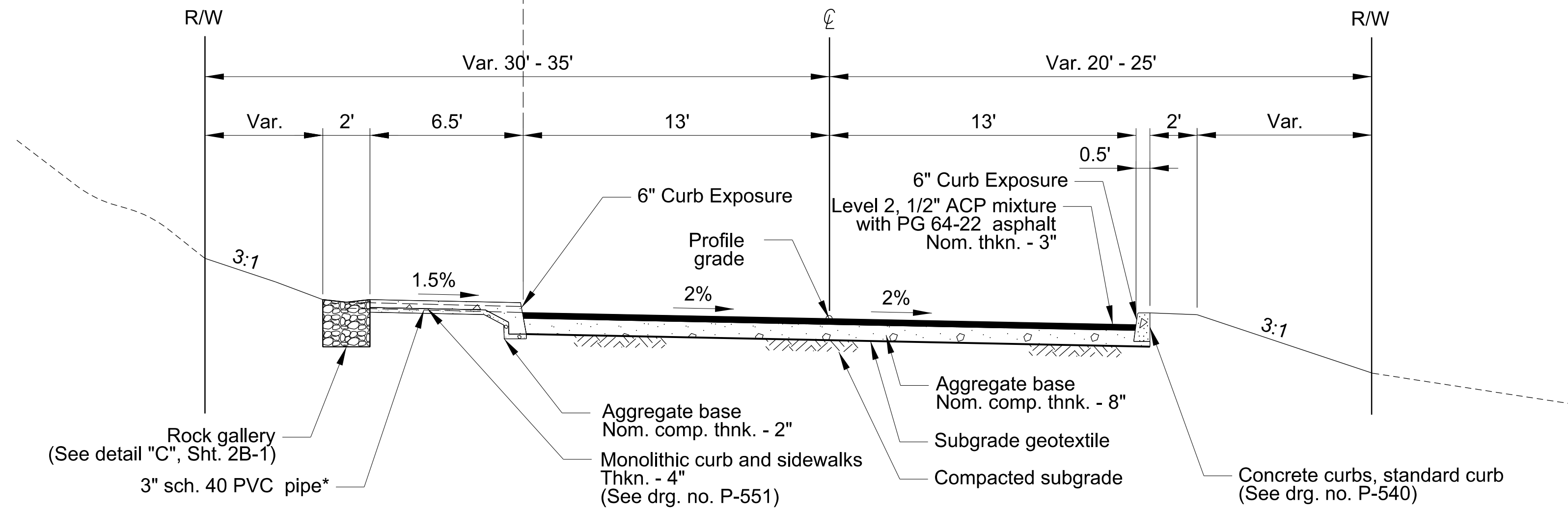


SE MALDEN DRIVE
 Sta. "M" 8+07.26 to Sta. "M" 8+52.15
 "M" 12+25.10 to "M" 12+51.96
 "M" 12+60.98 to "M" 13+34.41



* Install rain drain to gutter (See drg. no. P-256)

- Station 2+02.00
- Station 2+75.00
- Station 3+55.00
- Station 3+94.00
- Station 5+60.00
- Station 6+15.00
- Station 7+00.00
- Station 7+80.00
- Station 8+85.00
- Station 9+45.00
- Station 9+95.00
- Station 11+05.00
- Station 12+01.00
- Station 13+85.00
- Station 14+50.00
- Station 14+80.00
- Station 15+23.00
- Station 16+25.00
- Station 16+82.00
- Station 17+85.00
- Station 18+40.00

SE MALDEN DRIVE
 Sta. "M" 2+04.19 to Sta. "M" 19+11.82

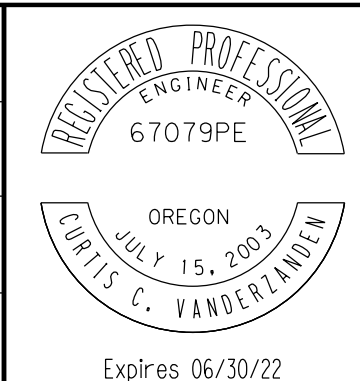
WARNING
 IF THIS BAR DOES NOT MEASURE 1" THEN DRAWING IS NOT TO SCALE.

kpff
 111 SW Fifth Ave., Suite 2500
 Portland, OR 97204
 O: 503.227.3251
 F: 503.224.4681
 www.kpff.com

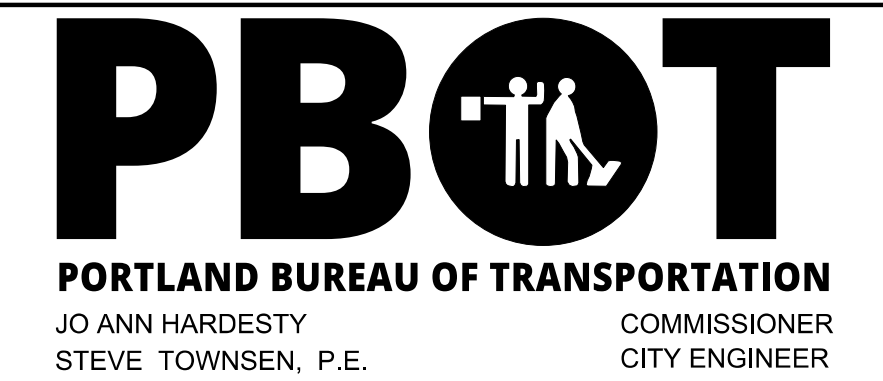
0055-02-TYPICAL.dgn :: 2A-1 1/26/2022 10:47:17 AM DMurcar

NO.	DATE	DESCRIPTION	APPD.
REVISION			

DESIGNED BY <i>D. Murar / L. Burke</i>	DATE APPROVED Feb 2022
CAD BY <i>R. Cadua</i>	PROGRAM MGR.
CHECKED BY <i>C. Vanderzanden</i>	CONSTR. MGR.

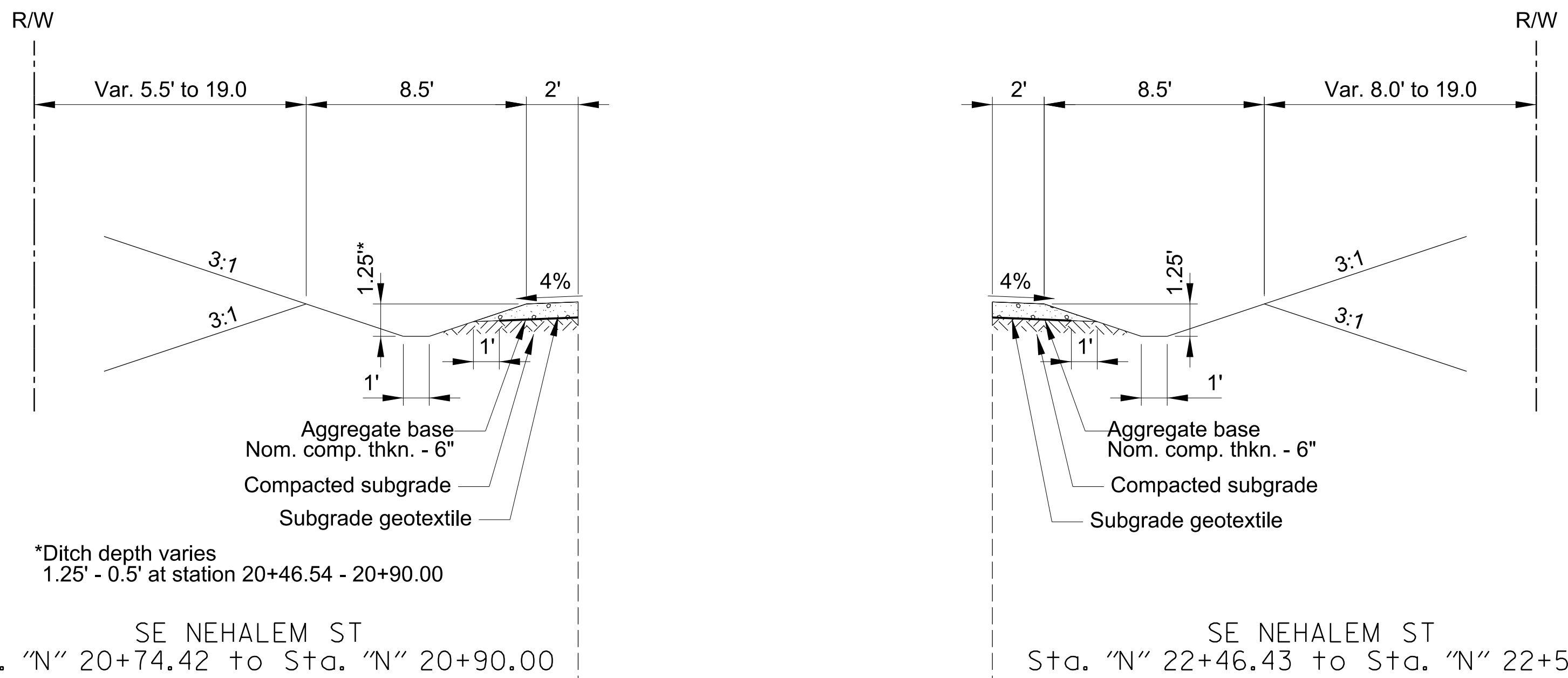


APPROVALS:	
SUPERVISING ENGINEER	REG. PROF. ENGR. NO. 84470PE
CITY ENGINEER	REG. PROF. ENGR. NO. 51538PE



Errol Heights
 Street and Storm Drainage Improvements
Typical Sections

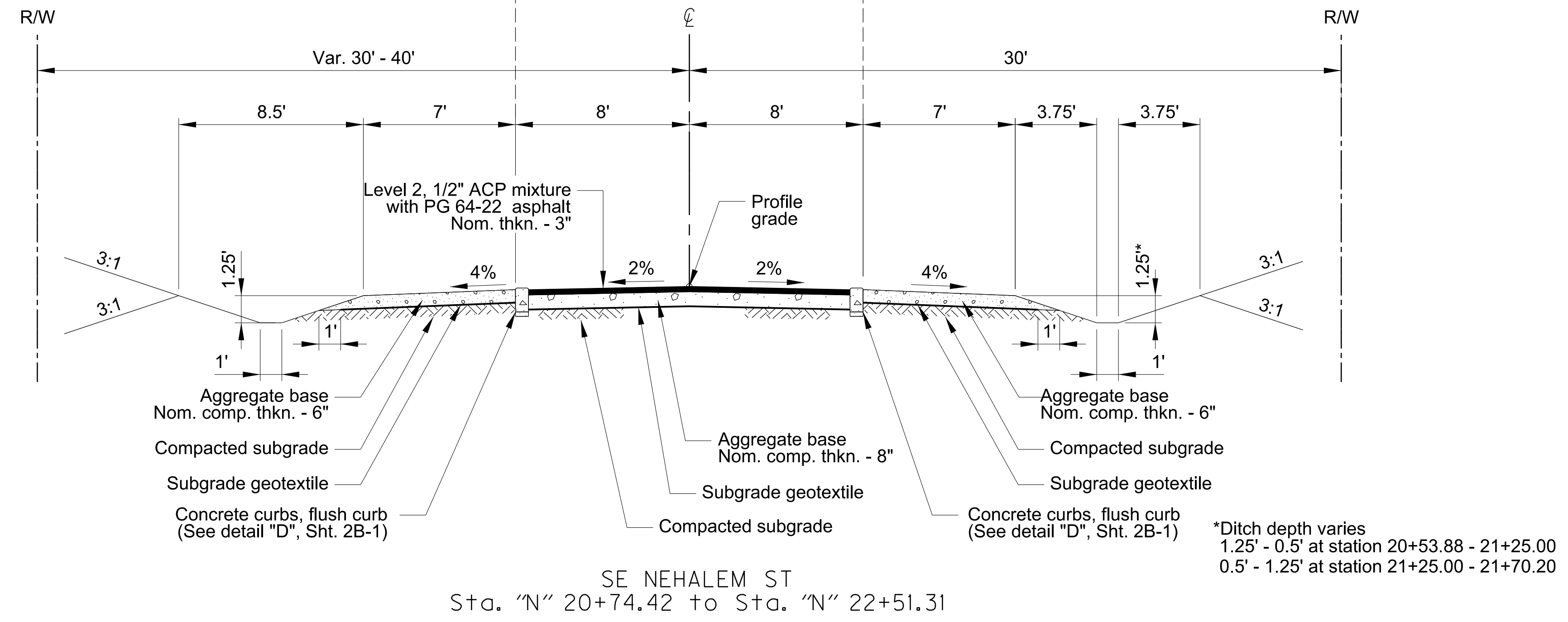
1/4 SECTION
1s2e19
PROJECT NO. T00526.D42
SHEET NO. 2A-1



*Ditch depth varies
1.25' - 0.5' at station 20+46.54 - 20+90.00

SE NEHALEM ST
Sta. "N" 20+74.42 to Sta. "N" 20+90.00

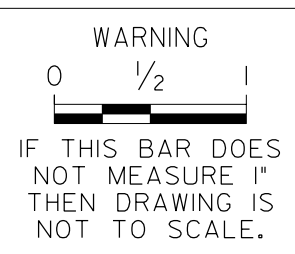
SE NEHALEM ST
Sta. "N" 22+46.43 to Sta. "N" 22+51.31



*Ditch depth varies
1.25' - 0.5' at station 20+53.88 - 21+25.00
0.5' - 1.25' at station 21+25.00 - 21+70.20

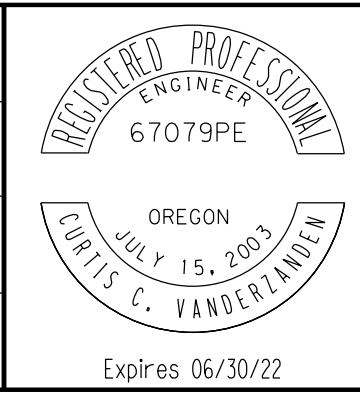
SE NEHALEM ST
Sta. "N" 20+74.42 to Sta. "N" 22+51.31

0055-02-TYPICAL.dgn :: 2A-2 1/26/2022 10:47:18 AM DMurc

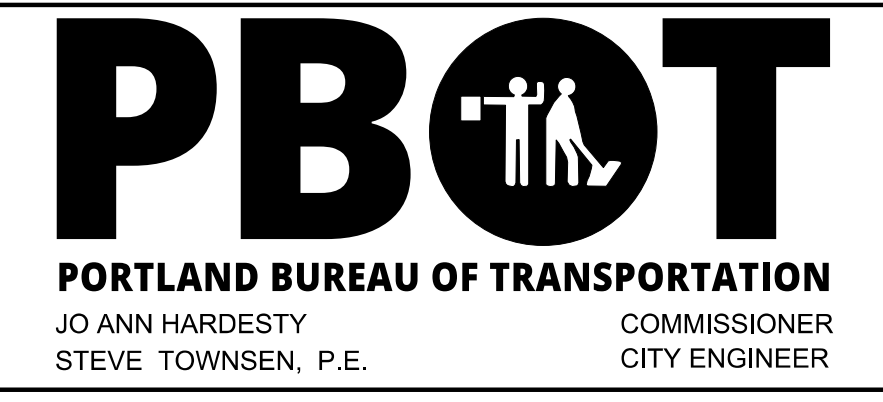


NO.	DATE	DESCRIPTION	APPD.
REVISION			

DESIGNED BY <i>D. Murar / L. Burke</i>	DATE APPROVED Feb 2022
CAD BY <i>R. Cadua</i>	PROGRAM MGR.
CHECKED BY <i>C. Vanderzanden</i>	CONSTR. MGR.

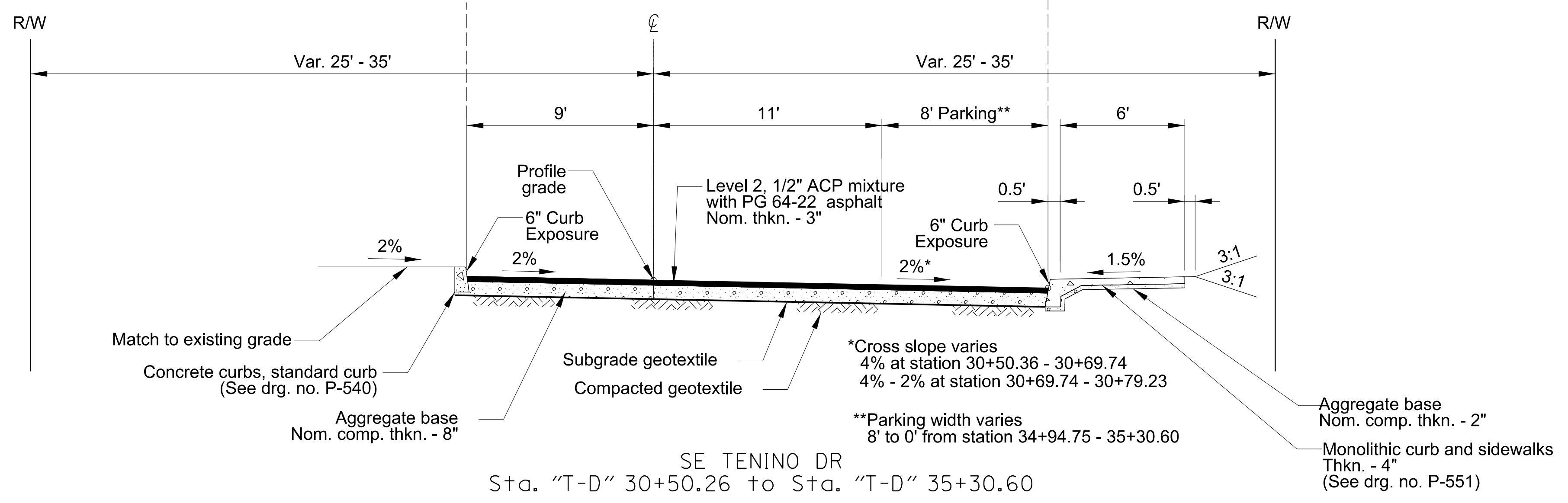
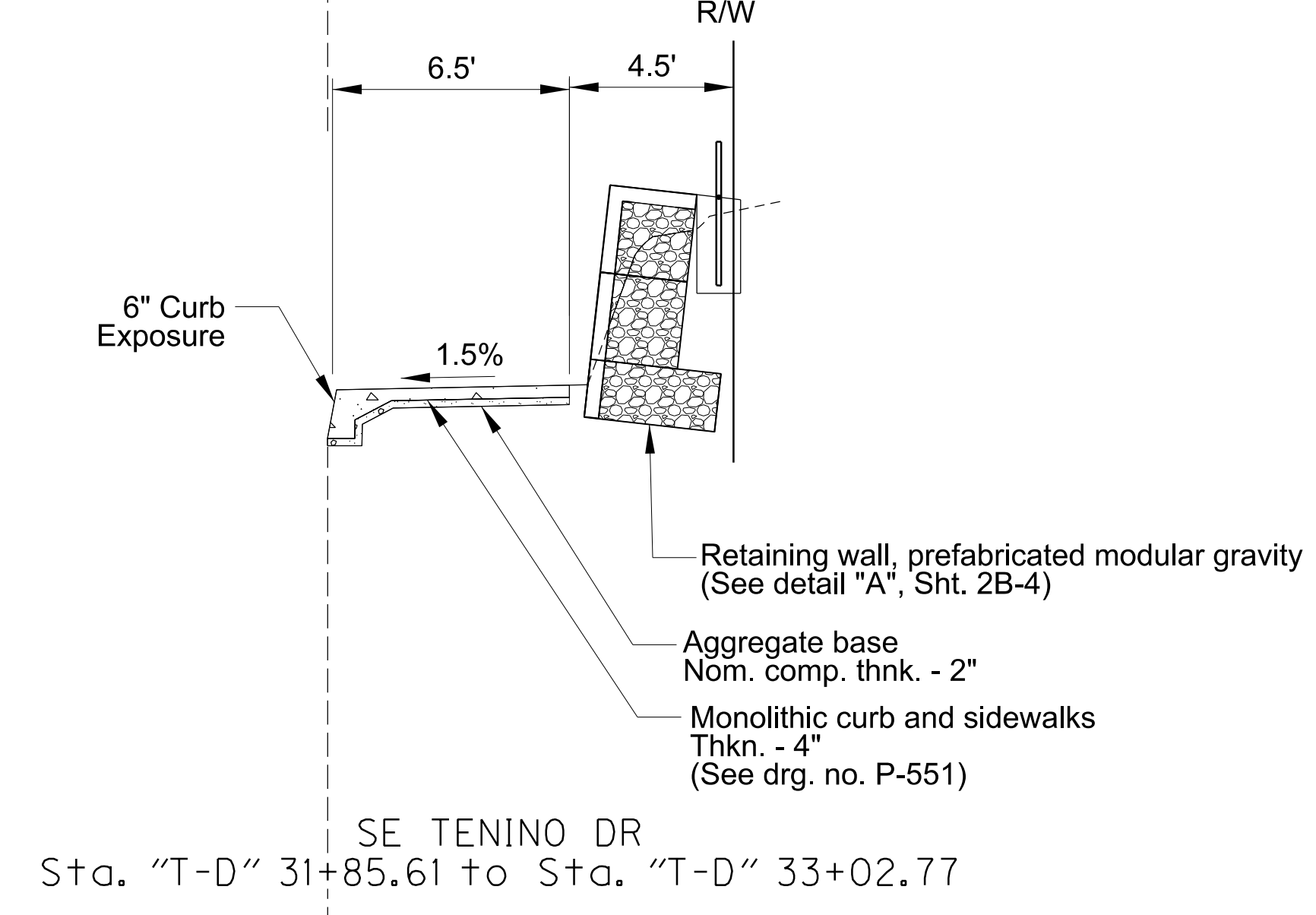
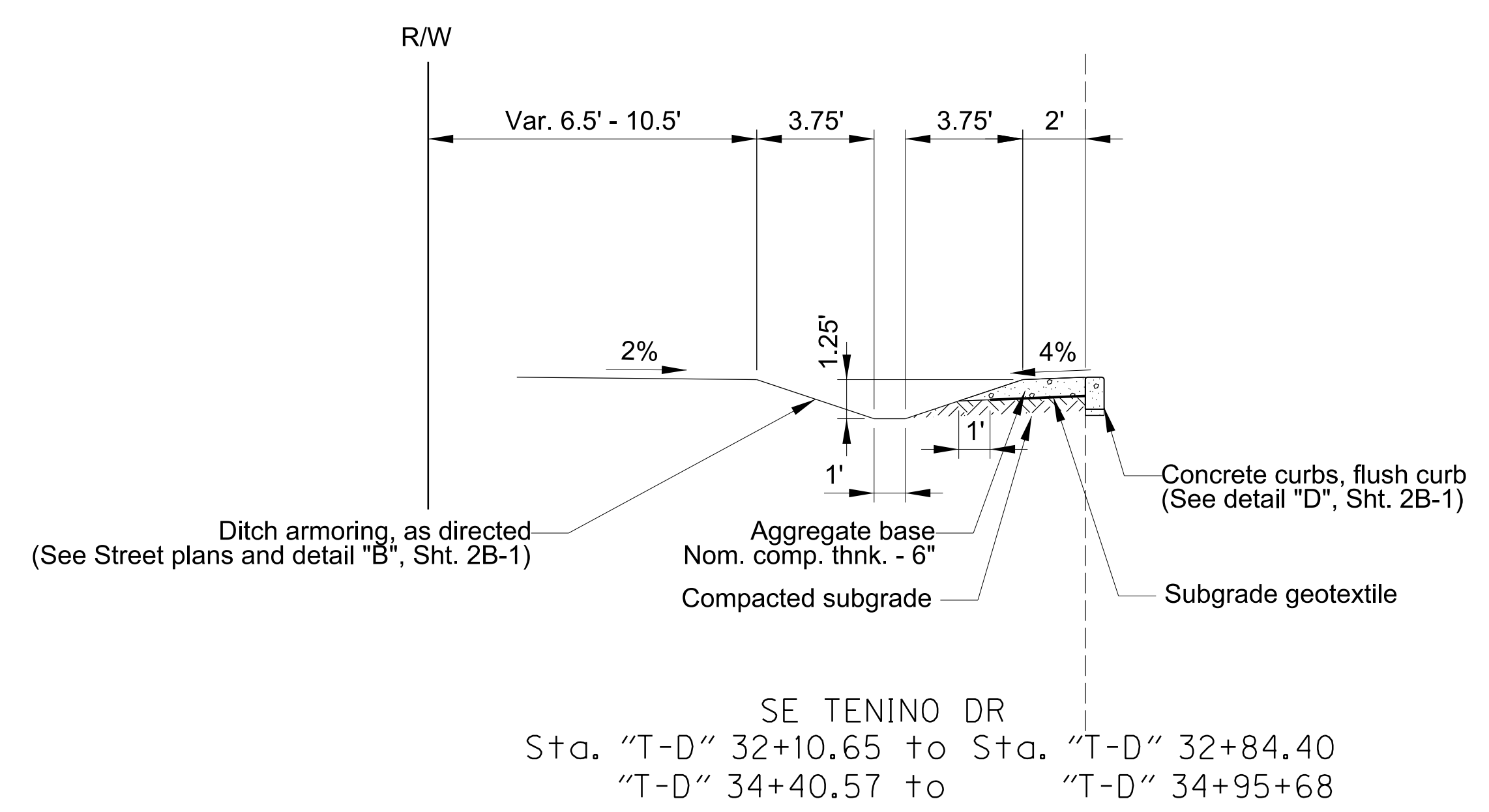
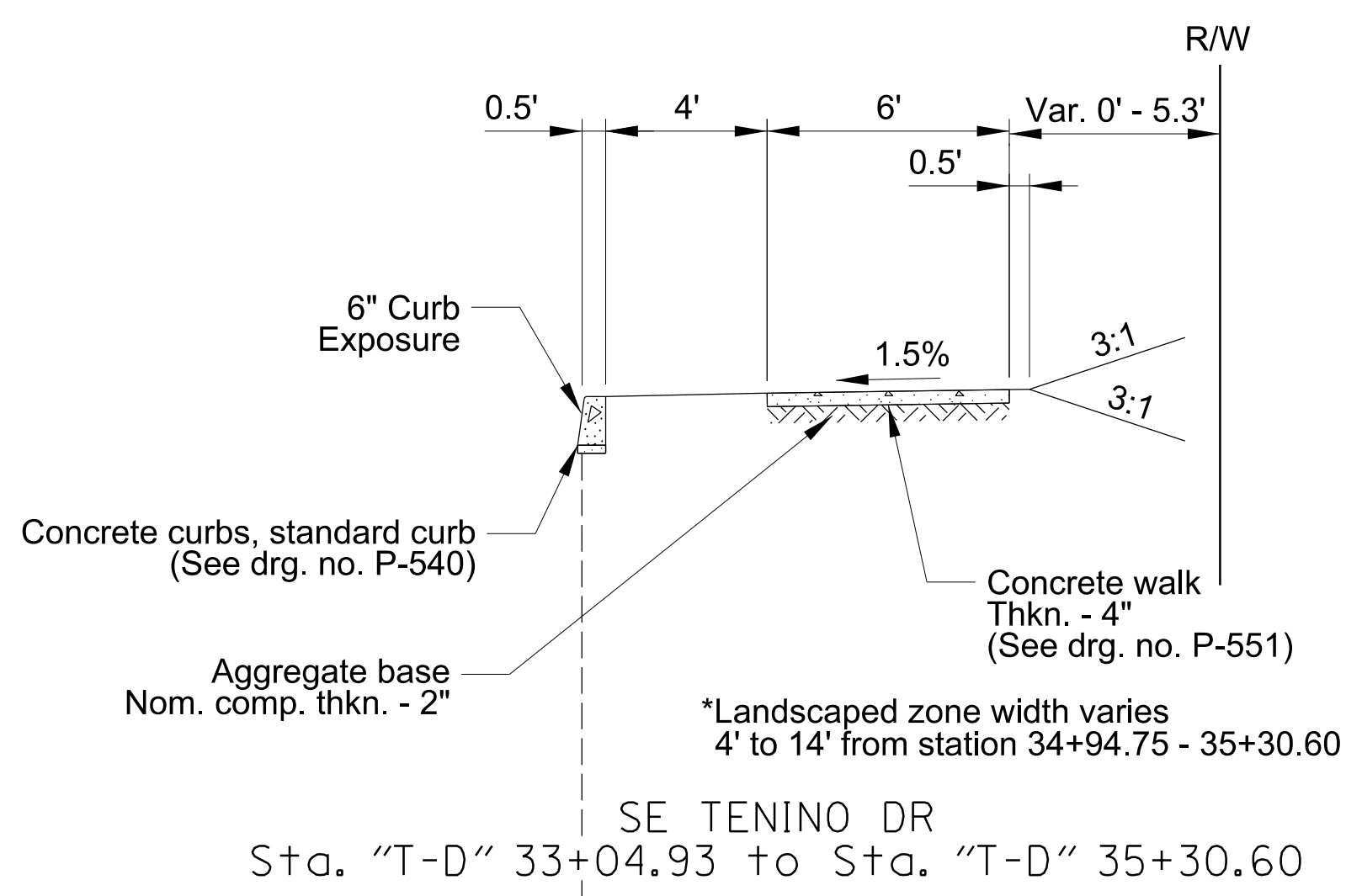
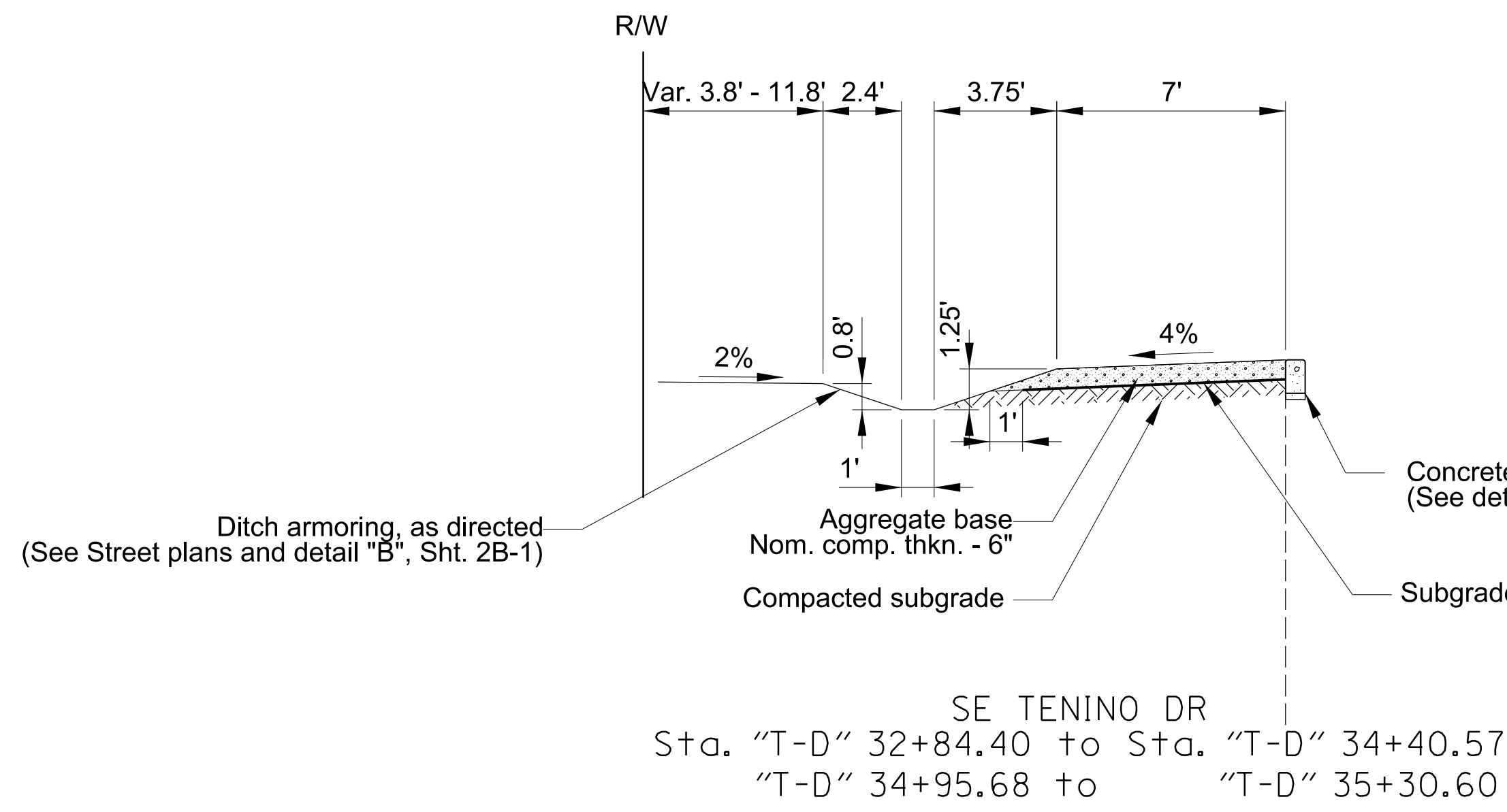


APPROVALS:	
SUPERVISING ENGINEER	REG. PROF. ENGR. NO. 84470PE
CITY ENGINEER	REG. PROF. ENGR. NO. 51538PE



Errol Heights
Street and Storm Drainage Improvements
Typical Sections

1/4 SECTION 1s2e19
PROJECT NO. T00526.D42
SHEET NO. 2A-2



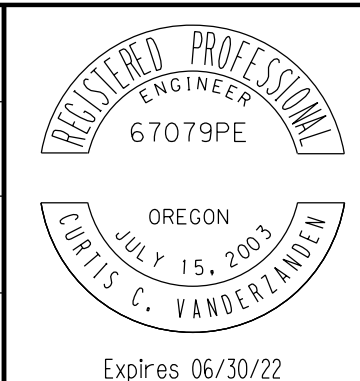
WARNING
IF THIS BAR DOES NOT MEASURE 1" THEN DRAWING IS NOT TO SCALE.



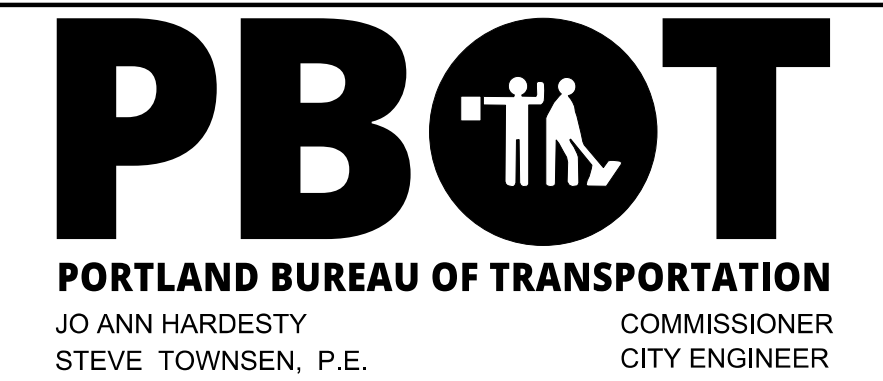
0055-02-TYPICAL.dgn :: 2A-3 1/26/2022 10:47:18 AM DMurc

NO.	DATE	DESCRIPTION	APPD.
		REVISION	

DESIGNED BY <i>D. Murar / L. Burke</i>	DATE APPROVED Feb 2022
CAD BY <i>R. Cadua</i>	PROGRAM MGR.
CHECKED BY <i>C. Vanderzanden</i>	CONSTR. MGR.

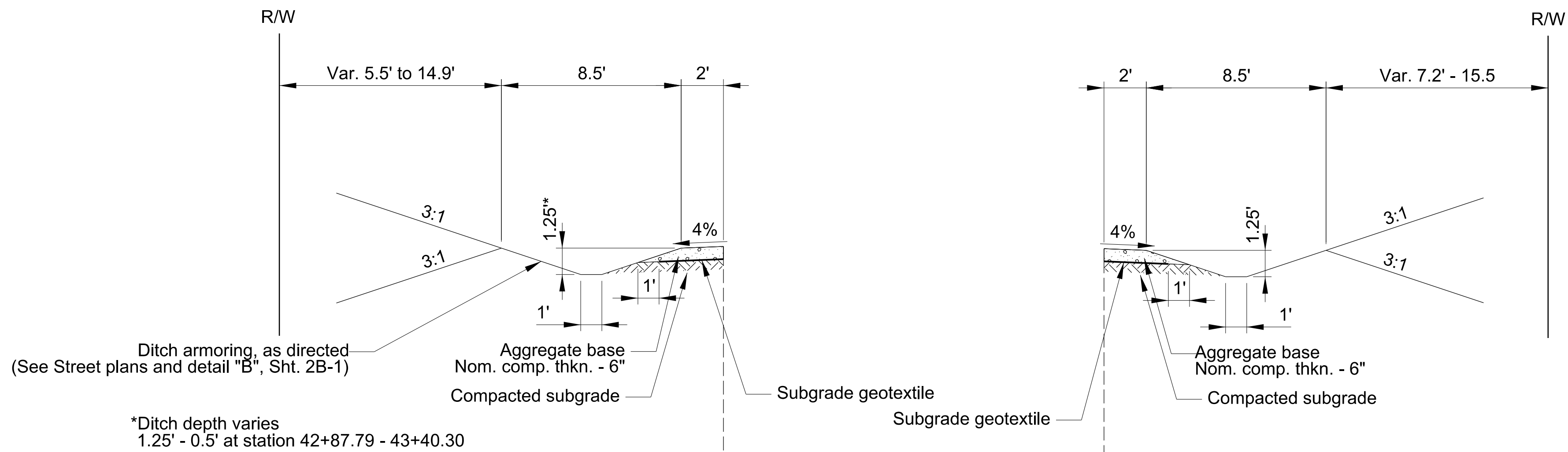


APPROVALS:	
SUPERVISING ENGINEER	REG. PROF. ENGR. NO. 84470PE
CITY ENGINEER	REG. PROF. ENGR. NO. 51538PE



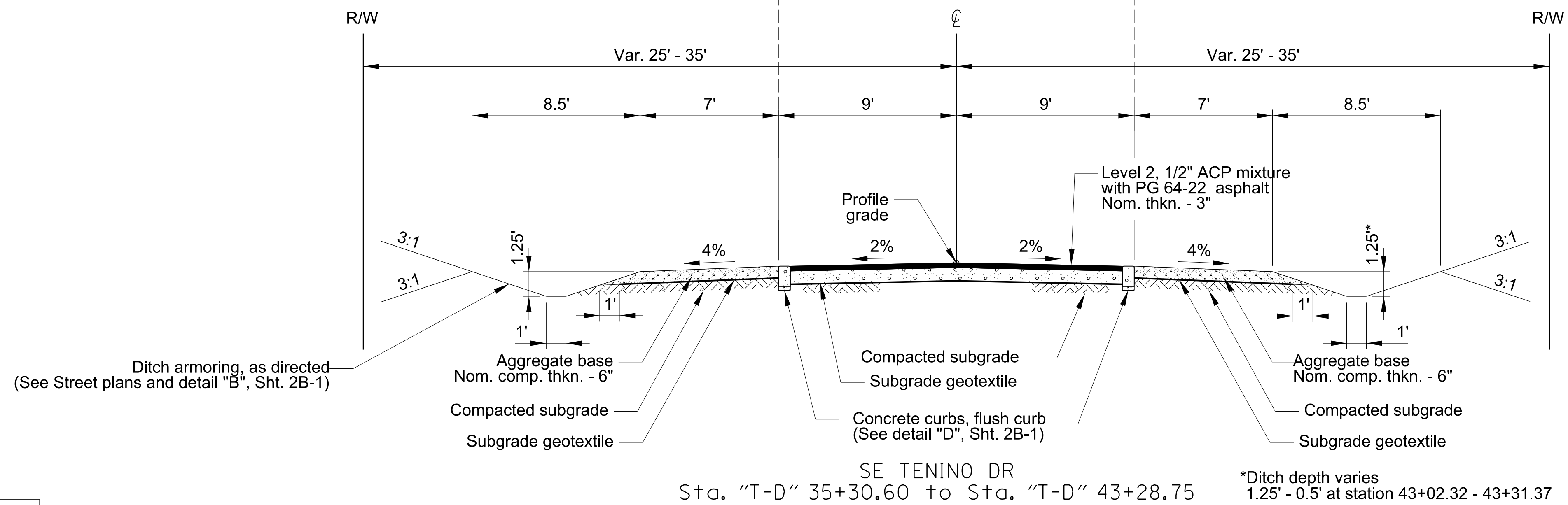
Errol Heights
Street and Storm Drainage Improvements
Typical Sections

1/4 SECTION
1s2e19
PROJECT NO. T00526.D42
SHEET NO. 2A-3



SE TENINO DR
Sta. "T-D" 35+45.11 to Sta. "T-D" 38+30.65
"T-D" 39+04.47 to "T-D" 39+28.24
"T-D" 41+40.41 to "T-D" 41+62.47
"T-D" 42+86.60 to "T-D" 43+28.75

SE TENINO DR
Sta. "T-D" 35+36.37 to Sta. "T-D" 36+20.92
"T-D" 37+08.60 to "T-D" 38+57.75



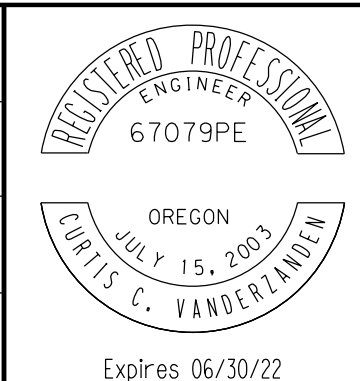
WARNING
IF THIS BAR DOES NOT MEASURE 1" THEN DRAWING IS NOT TO SCALE.



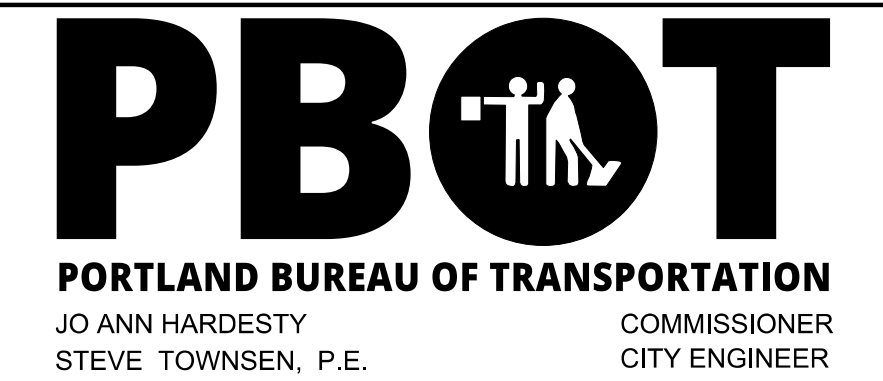
111 SW Fifth Ave., Suite 2500
Portland, OR 97204
O: 503.227.3251
F: 503.224.4681
www.kpff.com

NO.	DATE	DESCRIPTION	APPD.
REVISION			

DESIGNED BY D. Murar / L. Burke	DATE APPROVED Feb 2022
CAD BY R. Cadua	PROGRAM MGR.
CHECKED BY C. Vanderzanden	CONSTR. MGR.

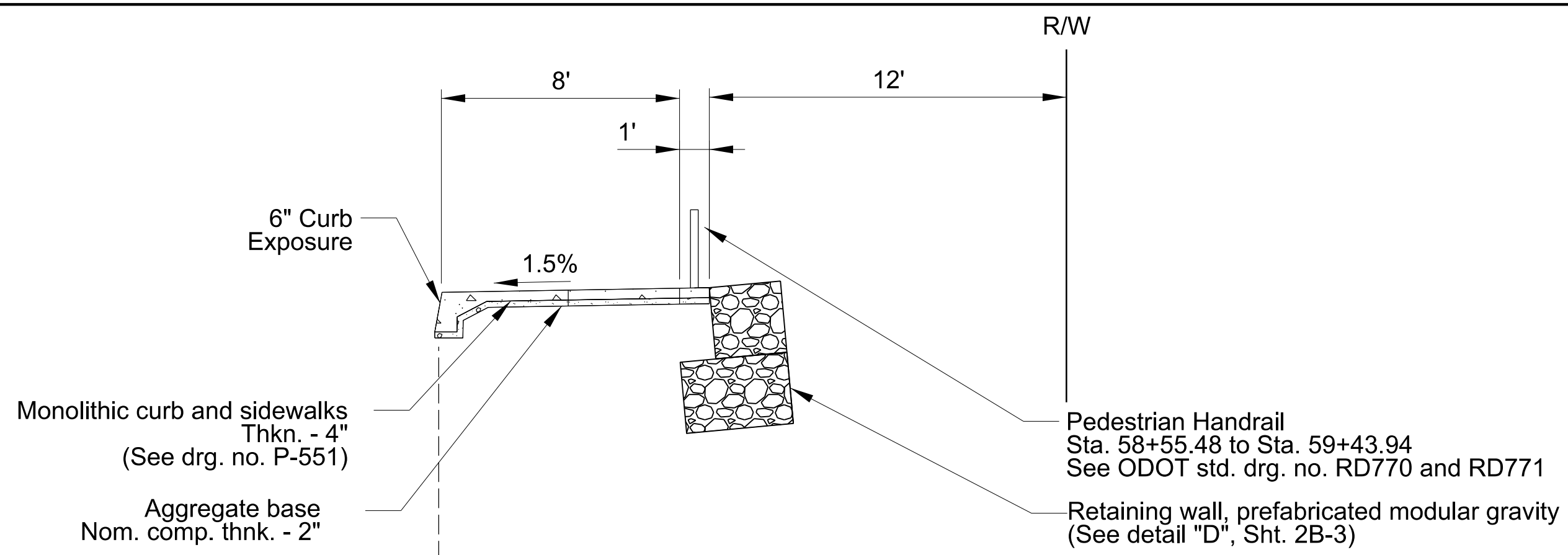


APPROVALS:	
SUPERVISING ENGINEER	REG. PROF. ENGR. NO. 84470PE
CITY ENGINEER	REG. PROF. ENGR. NO. 51538PE

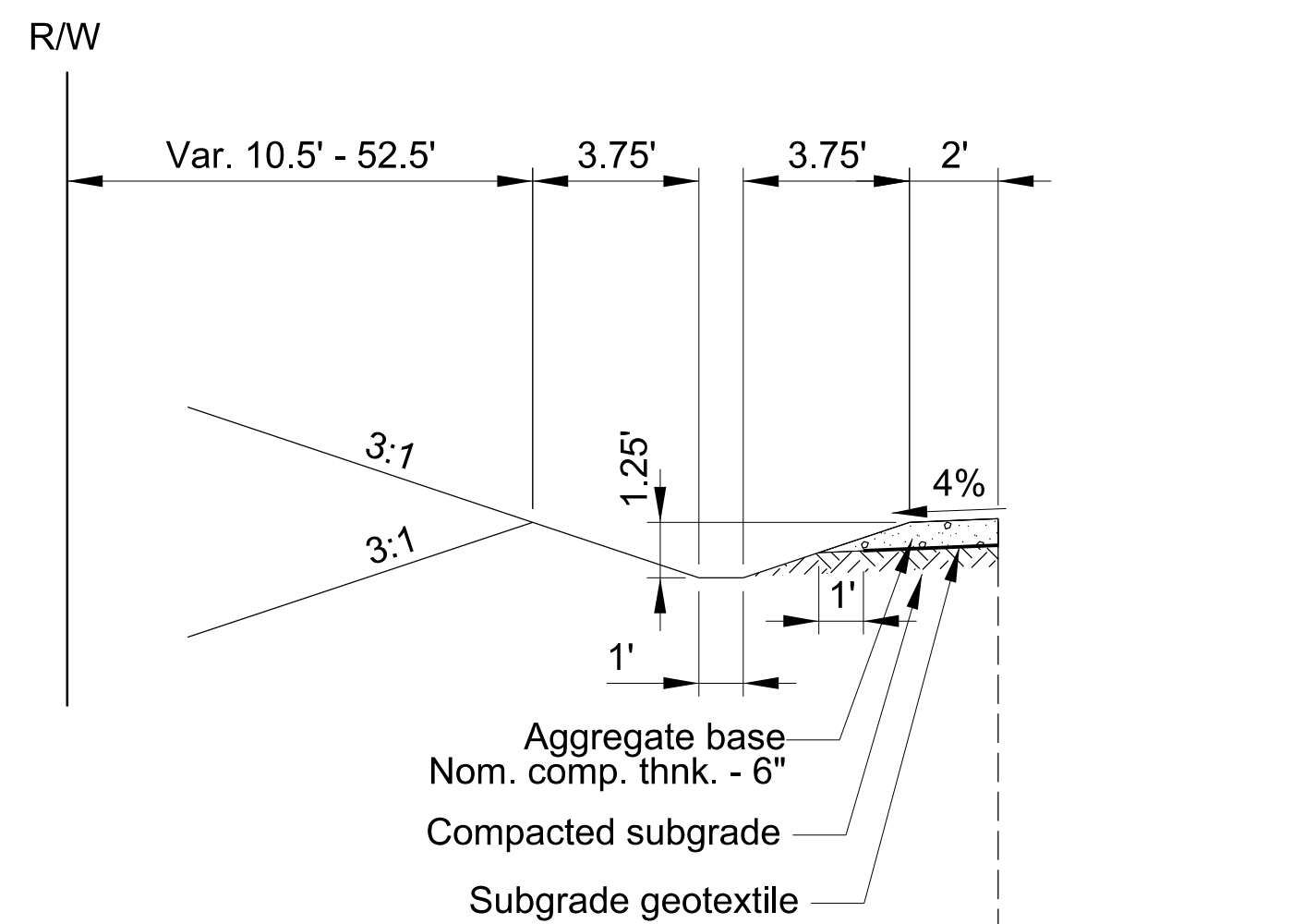


Errol Heights
Street and Storm Drainage Improvements
Typical Sections

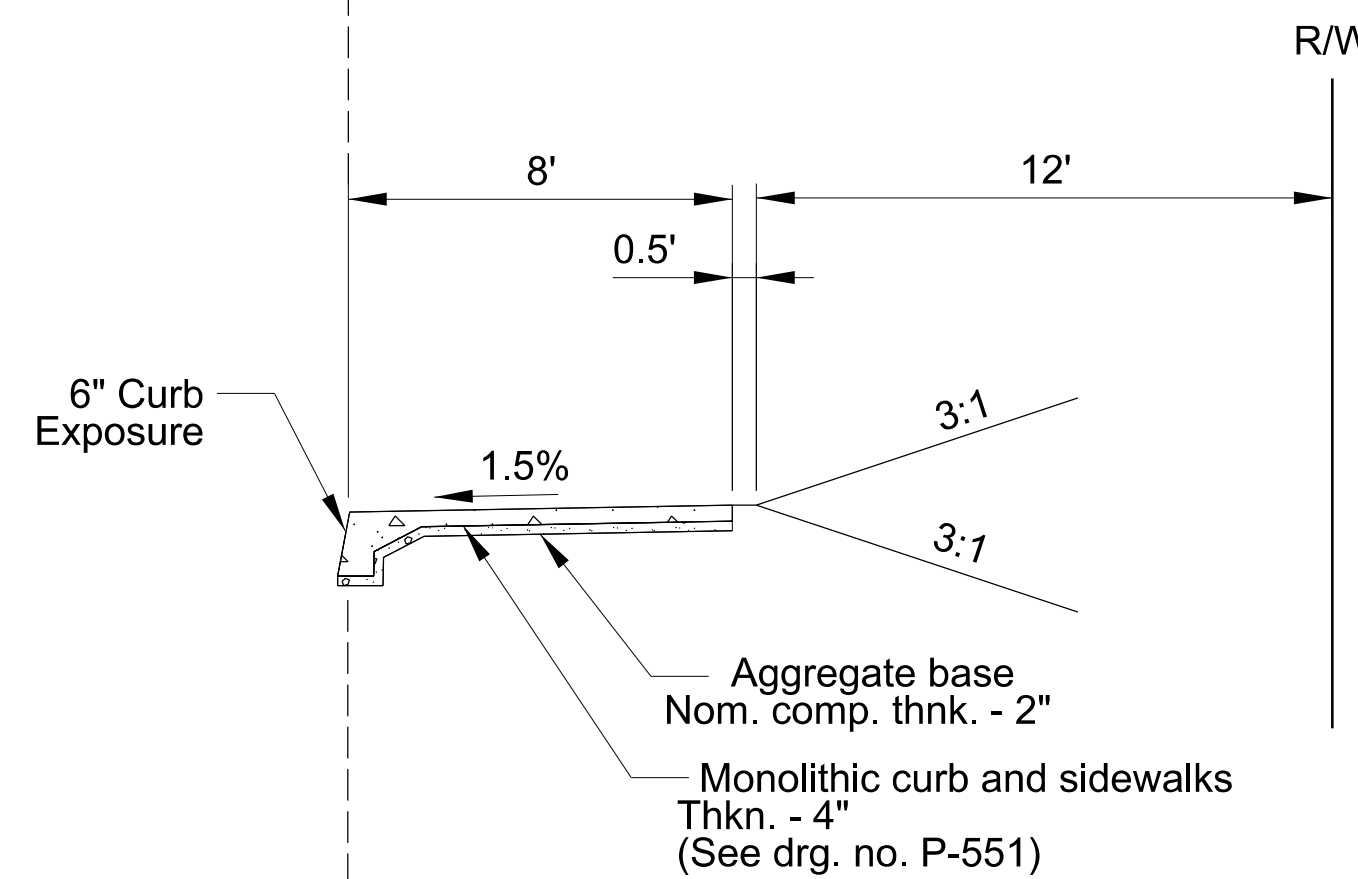
1/4 SECTION 1s2e19
PROJECT NO. T00526.D42
SHEET NO. 2A-4



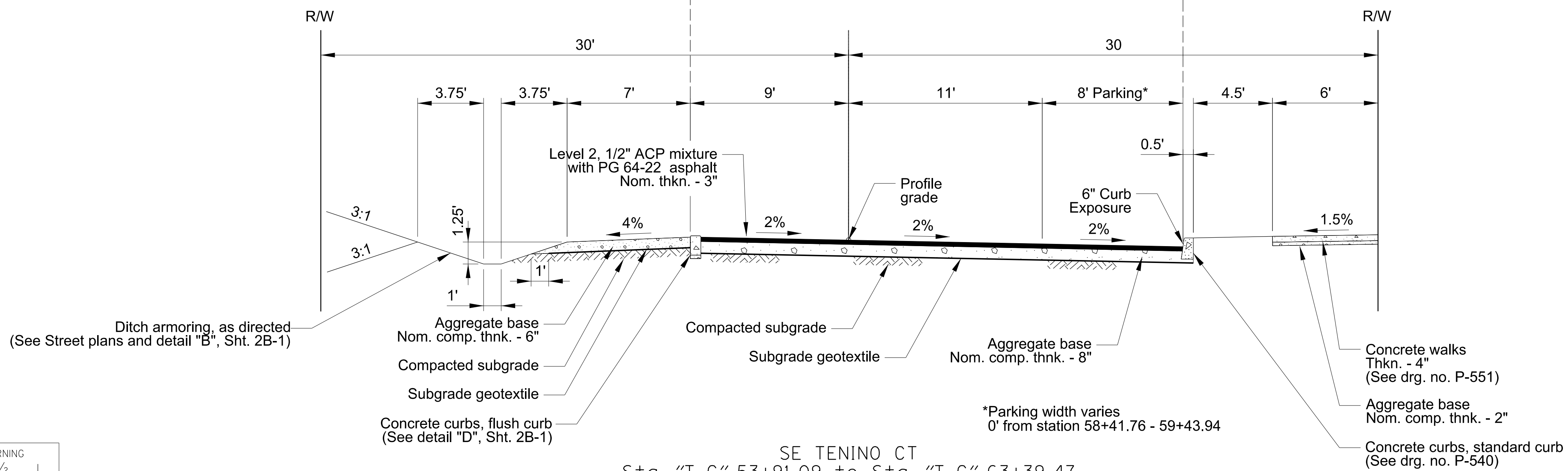
SE TENINO CT
Sta. "T-C" 58+55.48 to Sta. "T-C" 59+43.94



SE TENINO CT
Sta. "T-C" 54+57.75 to Sta. "T-C" 55+69.00
"T-C" 60+18.16 to "T-C" 62+76.35

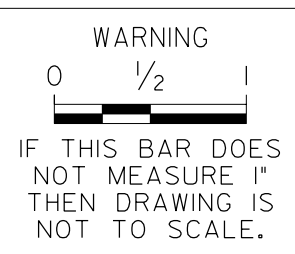


SE TENINO CT
Sta. "T-C" 55+85.95 to Sta. "T-C" 58+55.48
"T-C" 60+66.52 to "T-C" 61+71.99



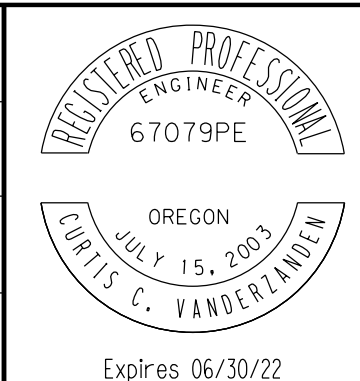
SE TENINO CT
Sta. "T-C" 53+91.09 to Sta. "T-C" 63+39.47

0055-02-TYPICAL.dgn :: 2A-5 1/26/2022 10:47:19 AM DMurc

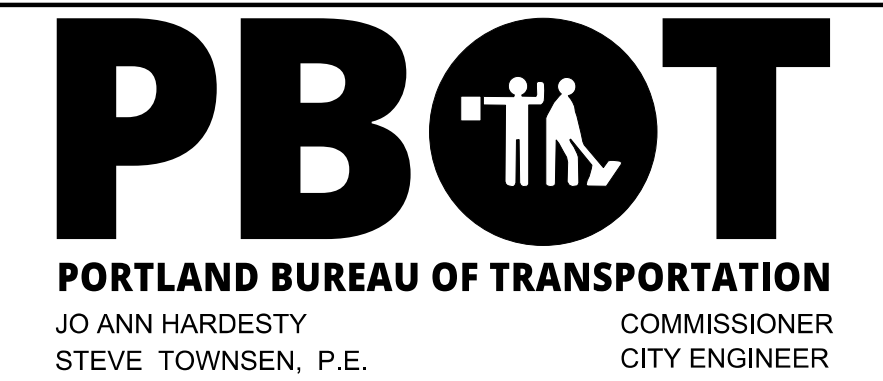


NO.	DATE	DESCRIPTION	APPD.
REVISION			

DESIGNED BY <i>D. Murar / L. Burke</i>	DATE APPROVED Feb 2022
CAD BY <i>R. Cadua</i>	PROGRAM MGR.
CHECKED BY <i>C. Vanderzanden</i>	CONSTR. MGR.

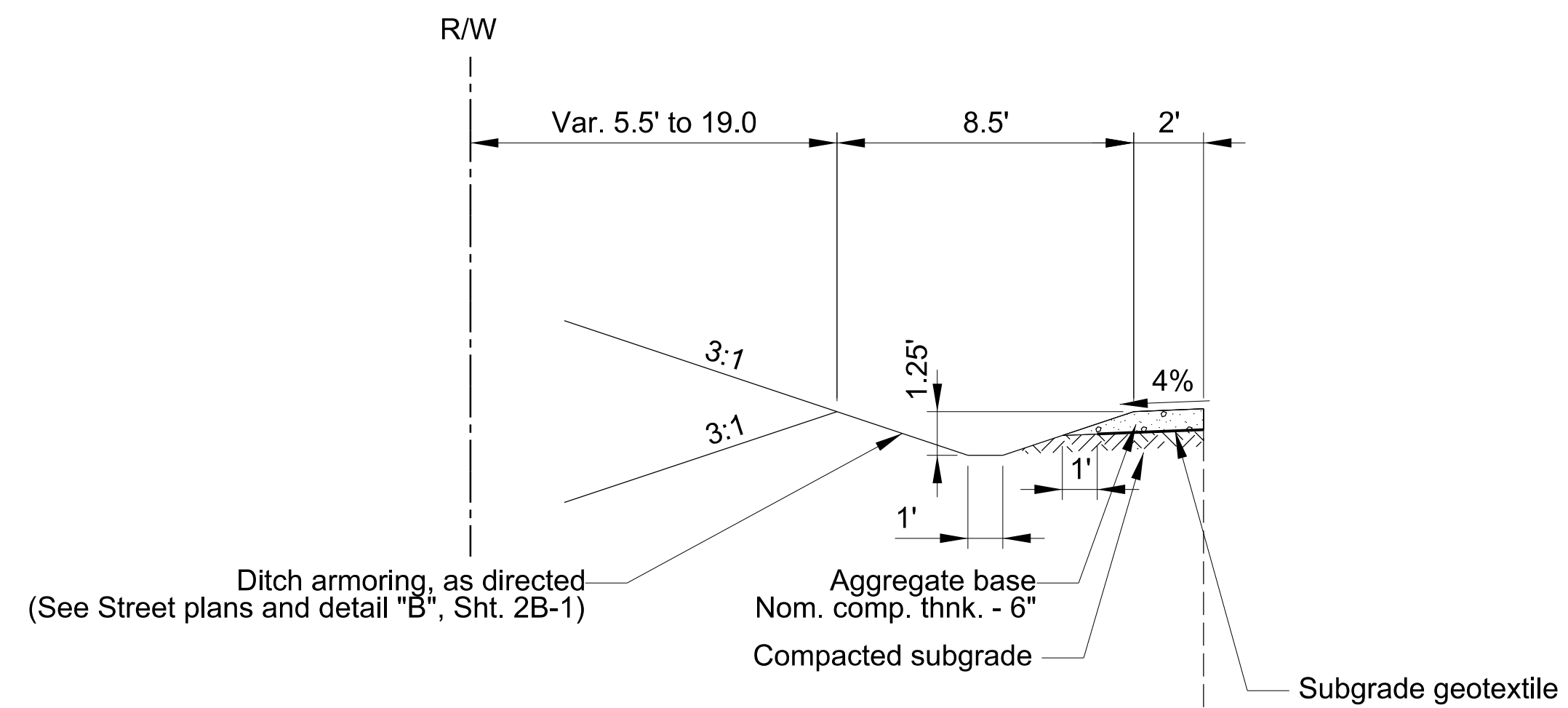


APPROVALS:	
SUPERVISING ENGINEER	REG. PROF. ENGR. NO. 84470PE
CITY ENGINEER	REG. PROF. ENGR. NO. 51538PE

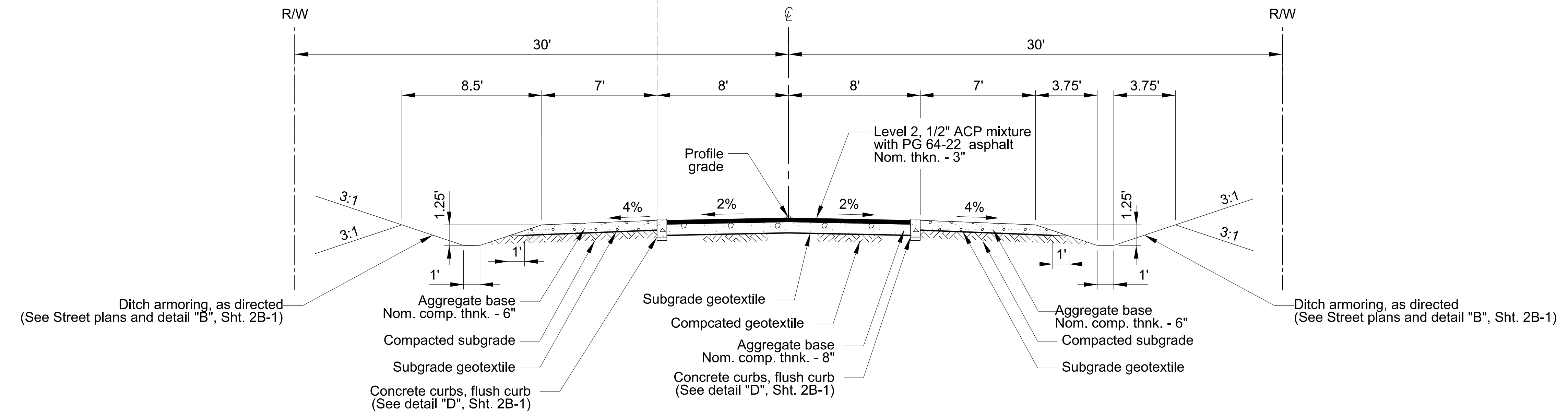


Errol Heights
Street and Storm Drainage Improvements
Typical Sections

1/4 SECTION
1s2e19
PROJECT NO. T00526.D42
SHEET NO. 2A-5



SE 48TH AVE
 Sta. "48TH" 70+93.19 to Sta. "48TH" 70+99.25
 Sta. "48TH" 75+12.65 to Sta. "48TH" 75+70.23



SE 48TH AVE
 Sta. "48TH" 70+93.19 to Sta. "48TH" 75+70.23

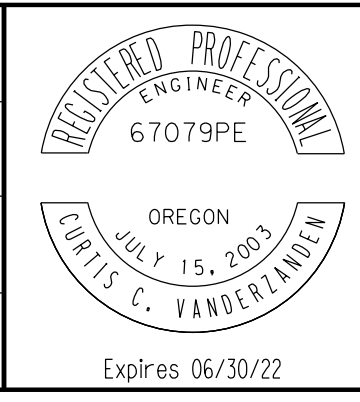
0055-02-TYPICAL.dgn :: 2A-6 1/26/2022 10:47:20 AM DMuror

WARNING
 IF THIS BAR DOES NOT MEASURE 1" THEN DRAWING IS NOT TO SCALE.

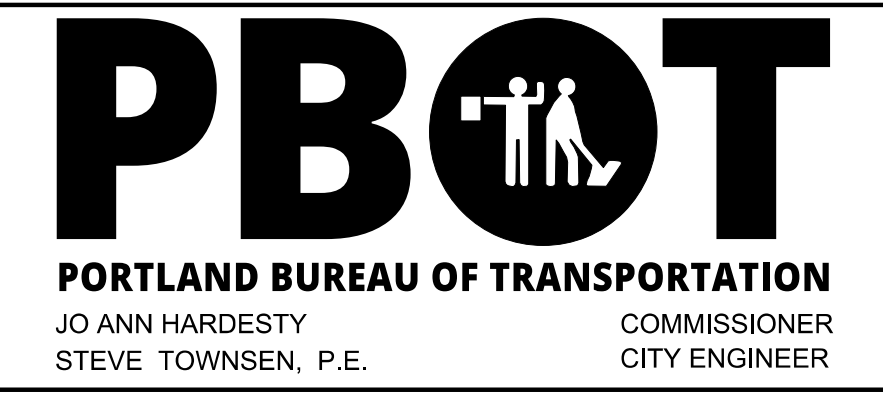
kpff
 111 SW Fifth Ave., Suite 2500
 Portland, OR 97204
 O: 503.227.3251
 F: 503.224.4681
 www.kpff.com

NO.	DATE	DESCRIPTION	APPD.
REVISION			

DESIGNED BY <i>D. Murar / L. Burke</i>	DATE APPROVED Feb 2022
CAD BY <i>R. Cadua</i>	PROGRAM MGR.
CHECKED BY <i>C. Vanderzanden</i>	CONSTR. MGR.

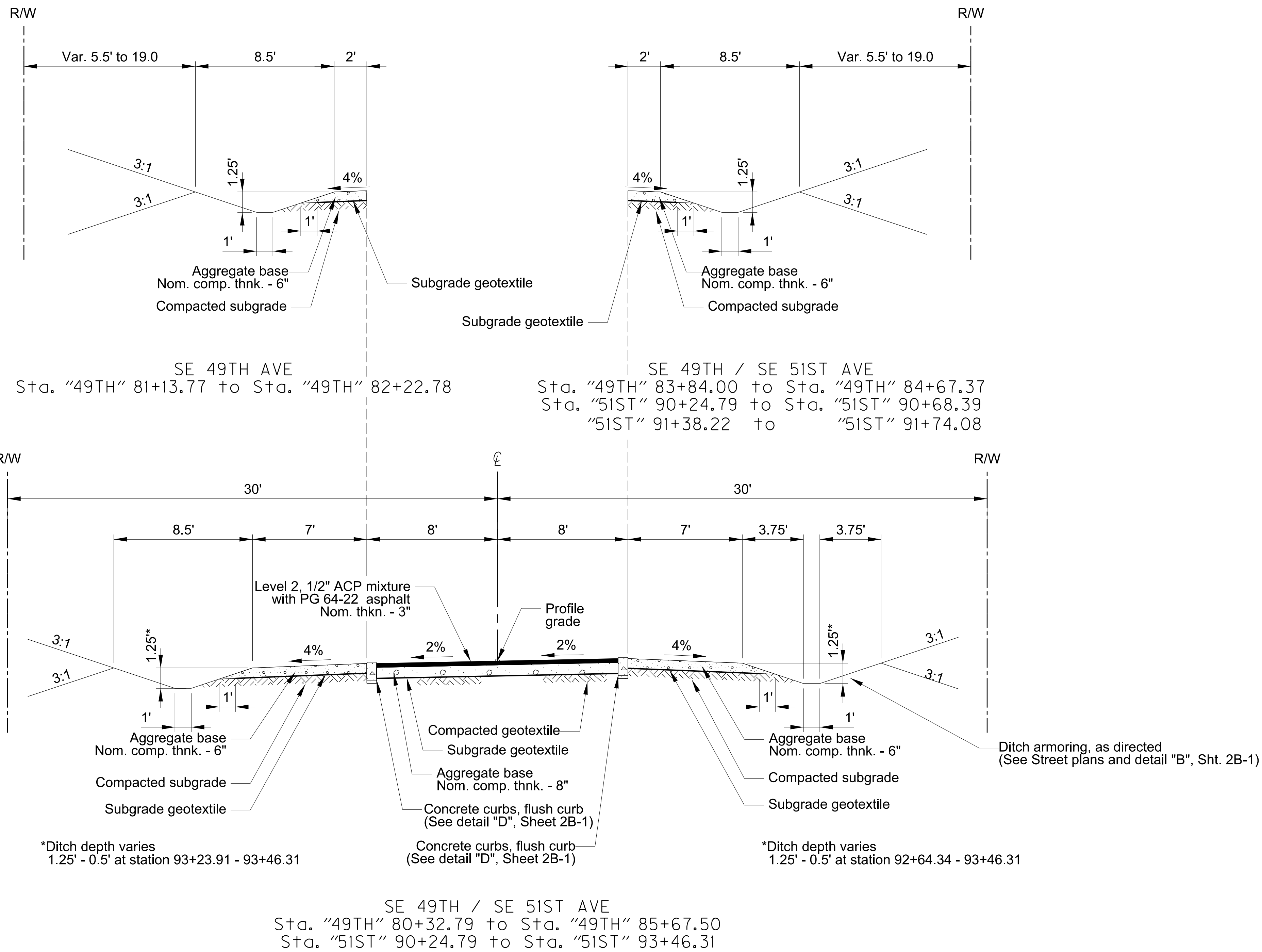


APPROVALS:	
SUPERVISING ENGINEER	REG. PROF. ENGR. NO. 84470PE
CITY ENGINEER	REG. PROF. ENGR. NO. 51538PE



Errol Heights
 Street and Storm Drainage Improvements
Typical Sections

1/4 SECTION
1s2e19
PROJECT NO. T00526.D42
SHEET NO. 2A-6



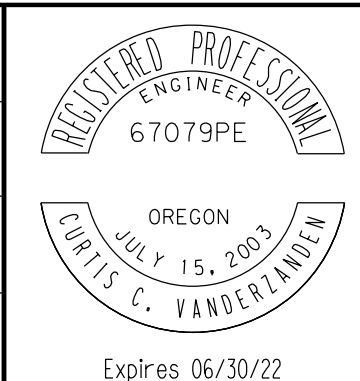
0055-02-TYPICAL.dgn :: 2A-7 1/26/2022 10:47:21AM DMur-ar

WARNING
IF THIS BAR DOES NOT MEASURE 1" THEN DRAWING IS NOT TO SCALE.

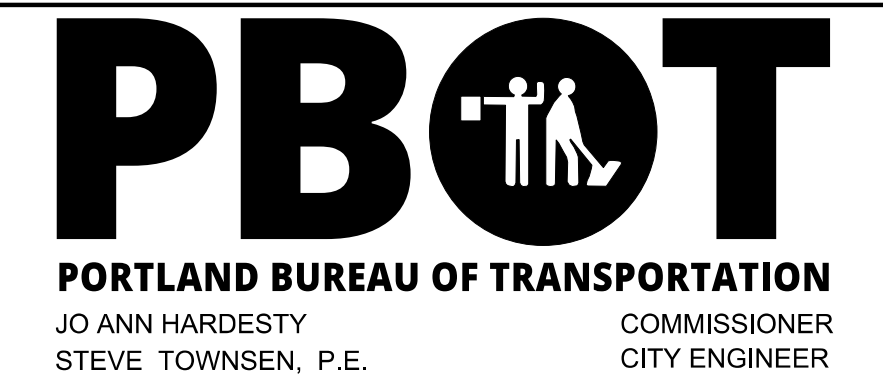
kpff
111 SW Fifth Ave., Suite 2500
Portland, OR 97204
O: 503.227.3251
F: 503.224.4681
www.kpff.com

NO.	DATE	DESCRIPTION	APPD.
REVISION			

DESIGNED BY <i>D. Murar / L. Burke</i>	DATE APPROVED Feb 2022
CAD BY <i>R. Cadua</i>	PROGRAM MGR.
CHECKED BY <i>C. Vanderzanden</i>	CONSTR. MGR.



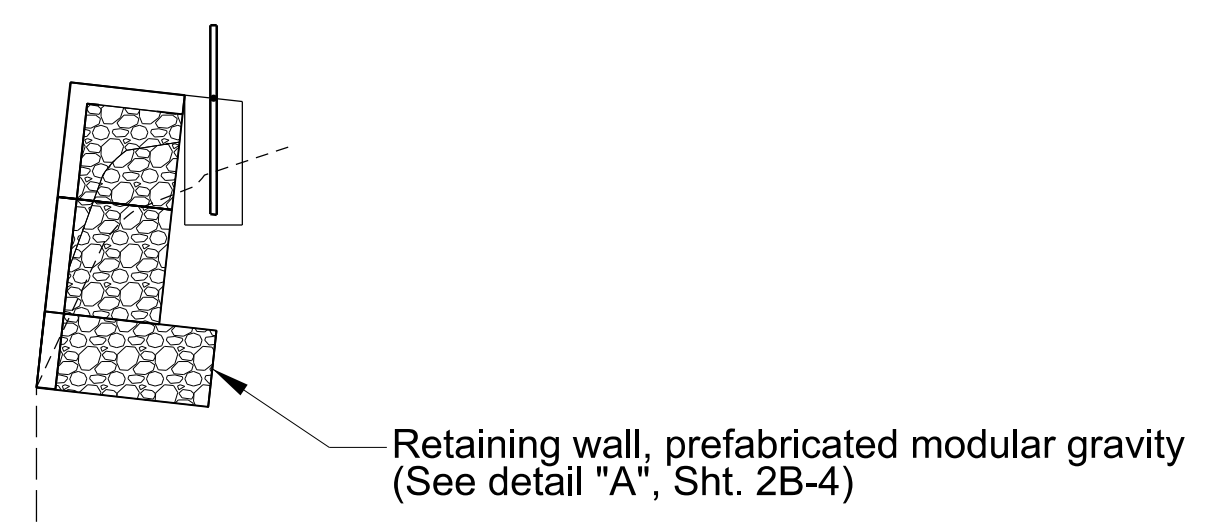
APPROVALS:	
SUPERVISING ENGINEER	REG. PROF. ENGR. NO. 84470PE
CITY ENGINEER	REG. PROF. ENGR. NO. 51538PE



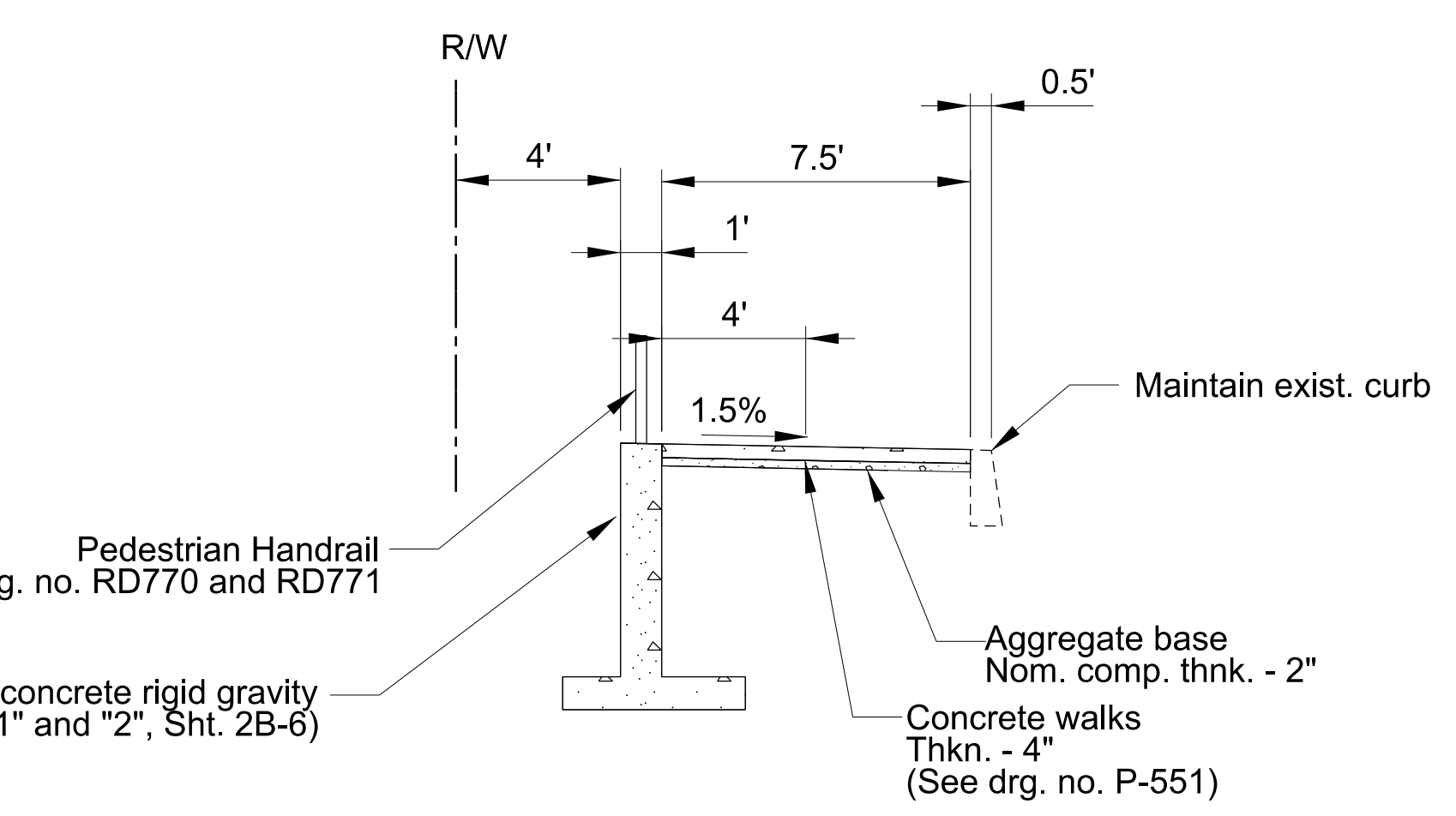
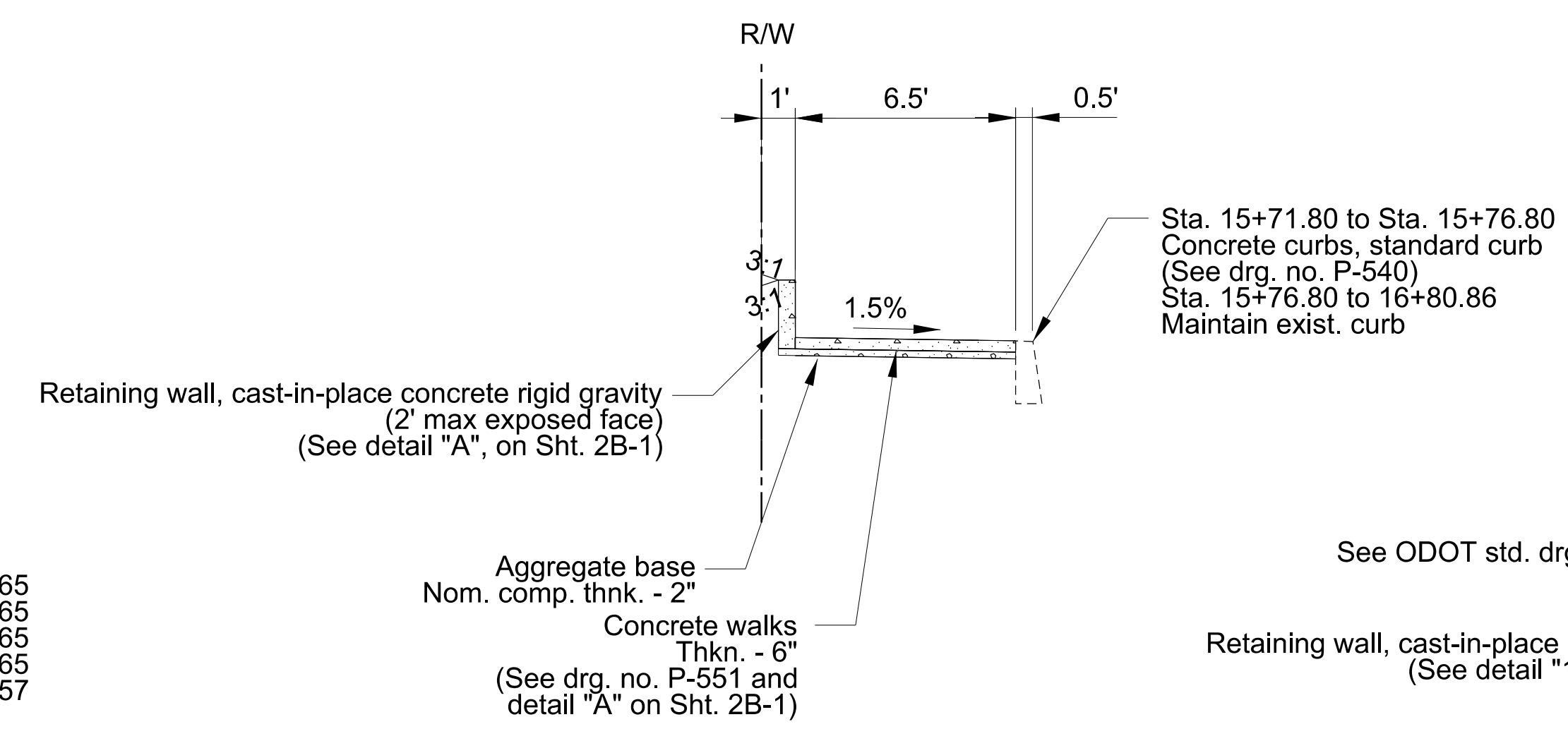
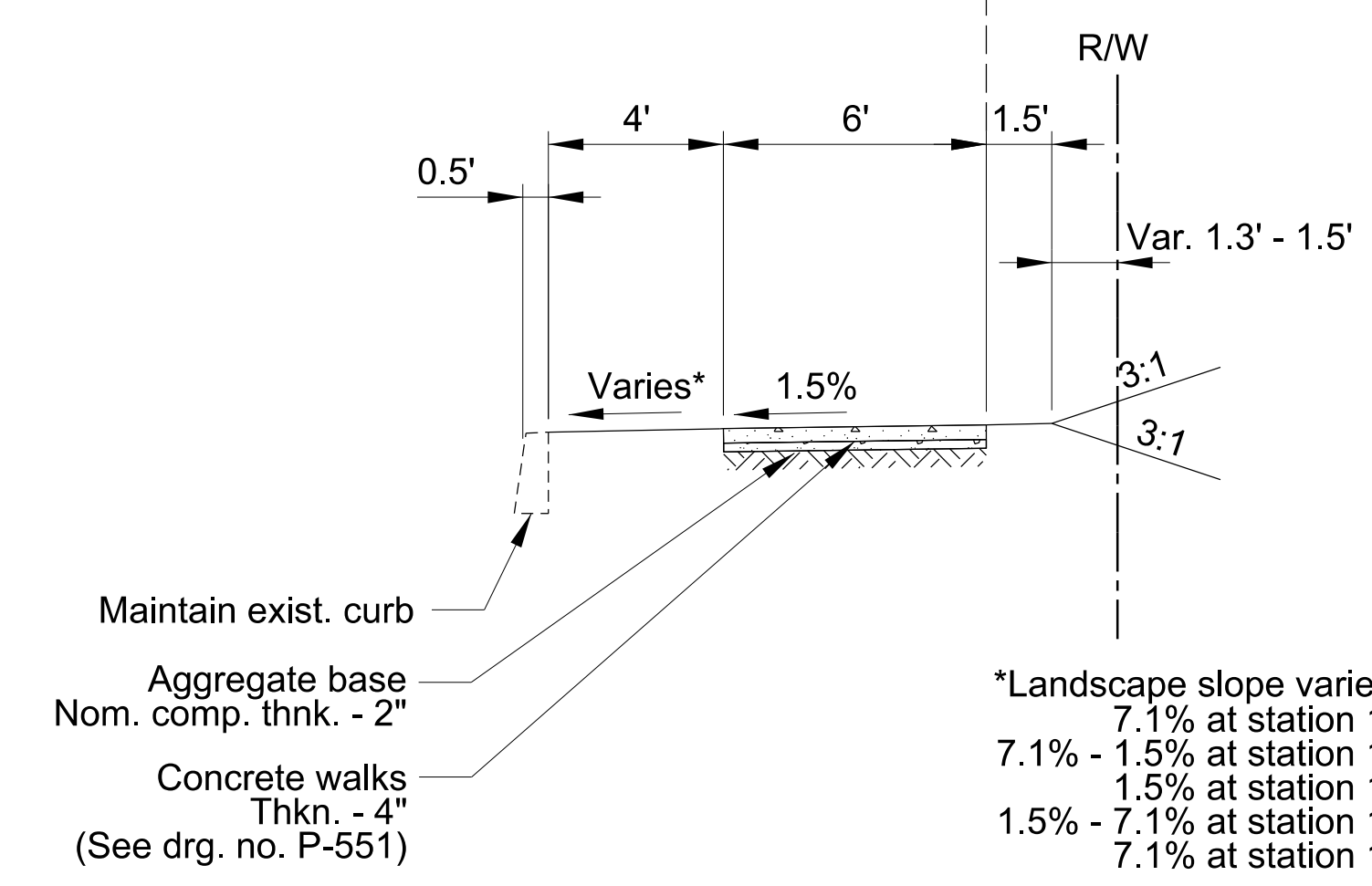
Errol Heights
Street and Storm Drainage Improvements
Typical Sections

1/4 SECTION
PROJECT NO. T00526.D42
SHEET NO. 2A-7

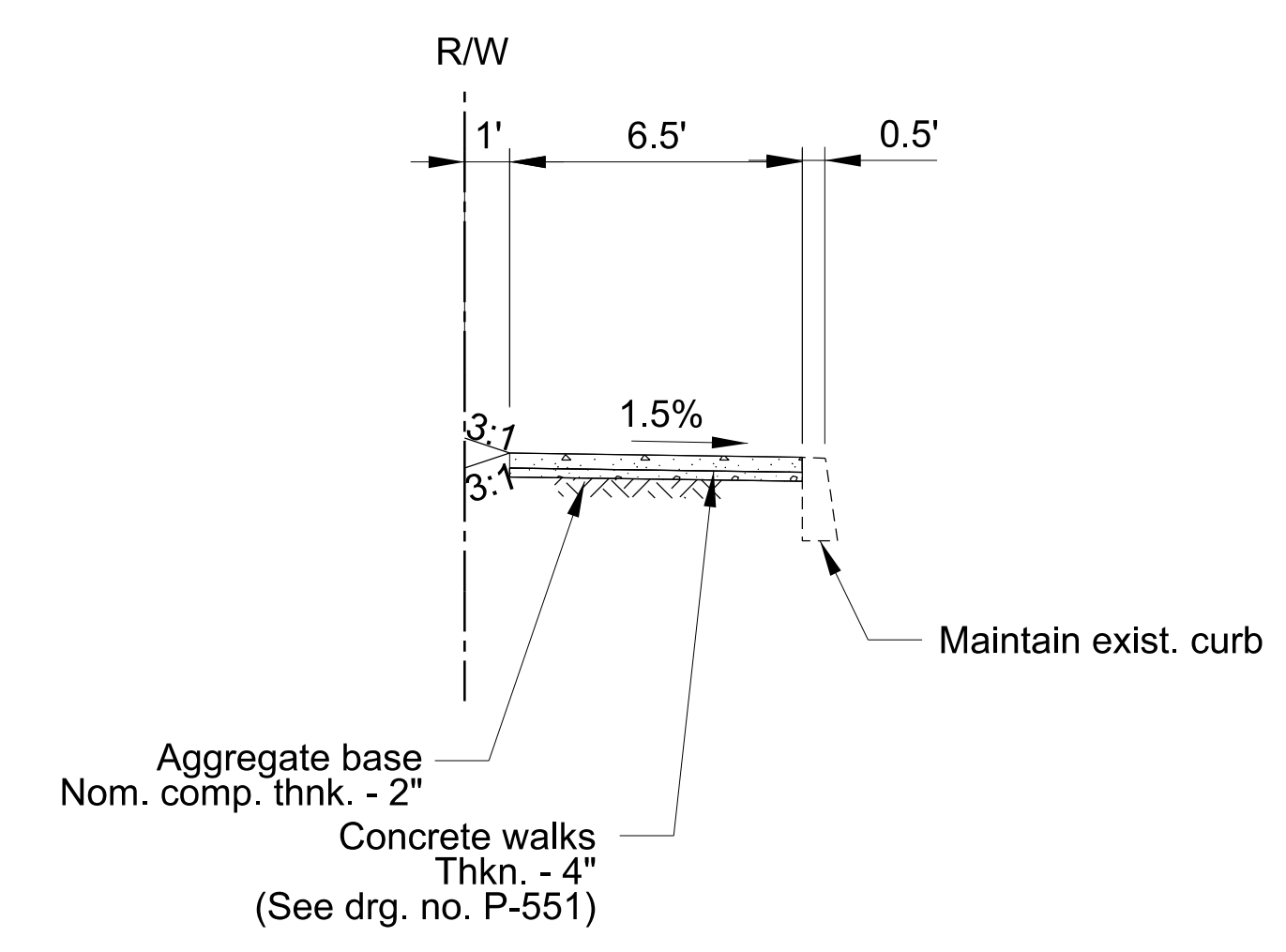
0055-02-TYPICAL.dgn :: 2A-8 1/26/2022 10:51:52 AM DMurcar



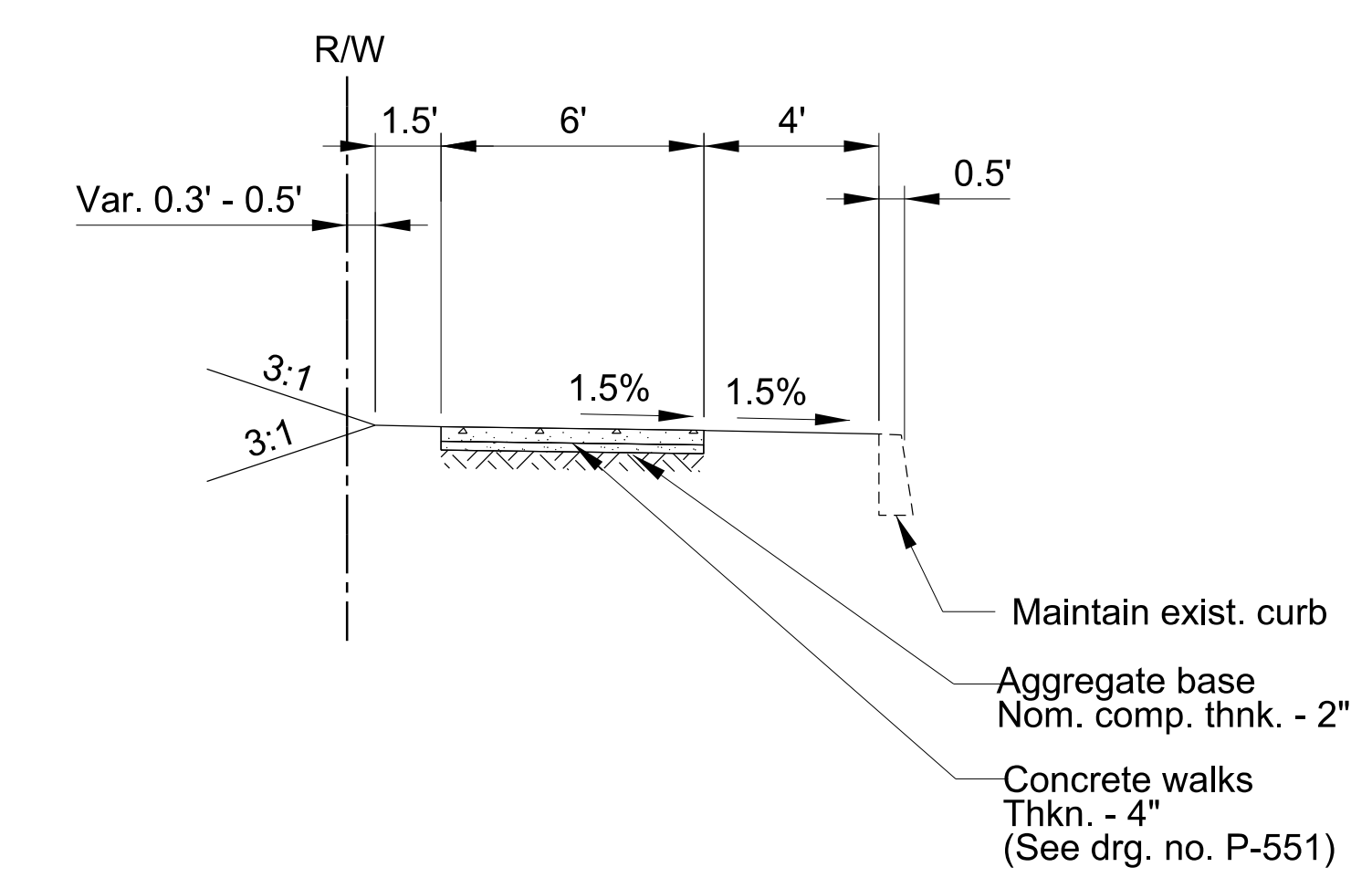
SE 45TH AVE
Sta. 45TH" 13+65.67 to Sta. "45TH" 15+10.14



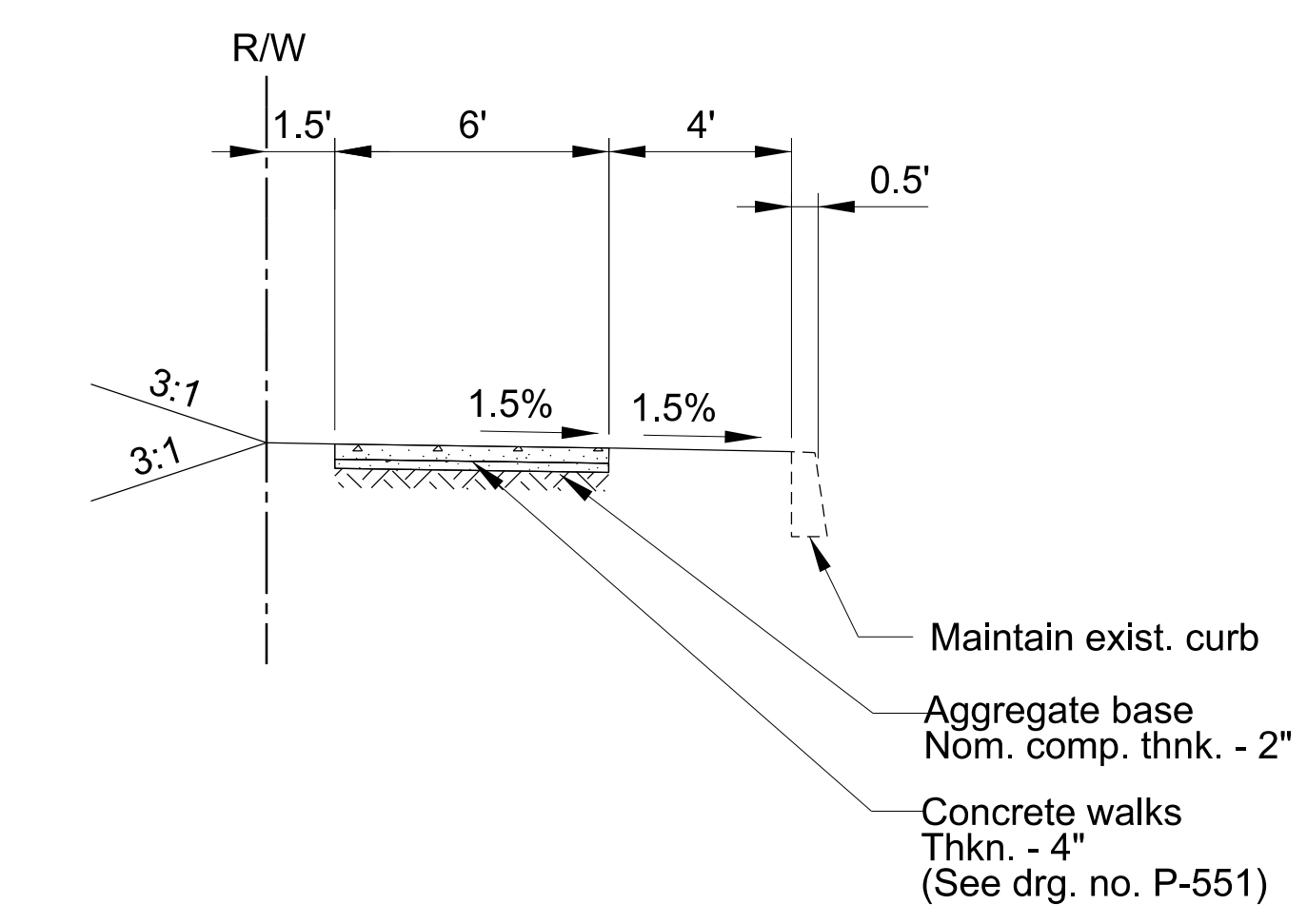
SE 45TH AVE
Sta. "45TH" 11+97.96 to Sta. "45TH" 14+93.57



SE 45TH AVE
Sta. 45TH" 15+71.80 to Sta. "45TH" 16+80.86



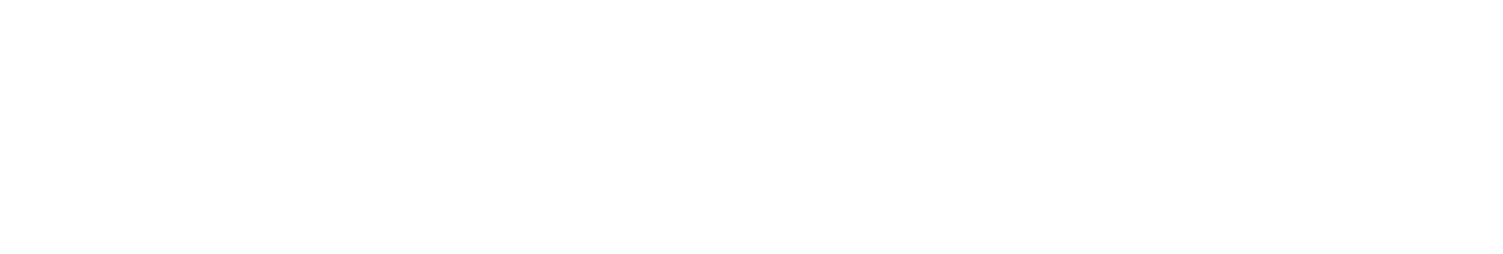
SE HARNEY DR
Sta. "H" 21+29.53 to Sta. "H" 22+21.01
Sta. "H" 22+42.17 to Sta. "H" 24+31.42
Sta. "H" 26+12.71 to Sta. "H" 27+16.75



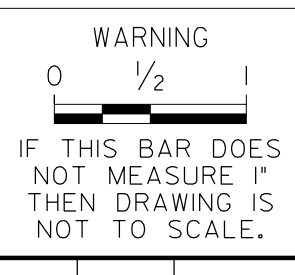
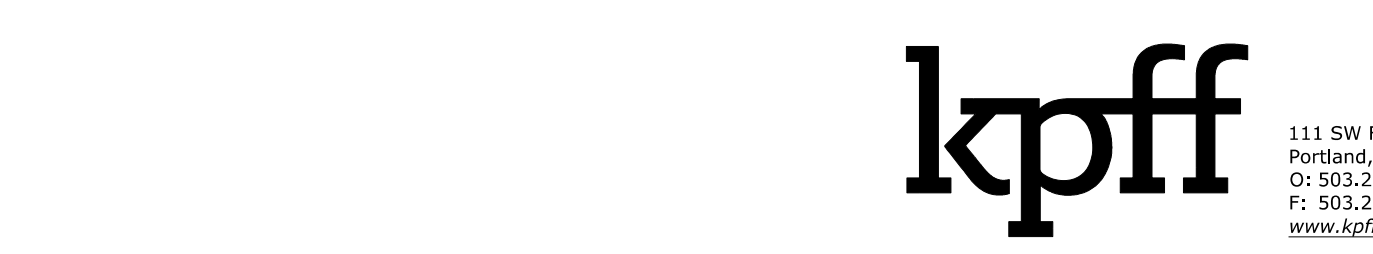
SE 45TH AVE
Sta. 45TH" 14+75.24 to Sta. "45TH" 15+71.80



SE 52ND AVE
Sta. "52ND" 31+53.45 TO Sta. "52ND" 32+20.56

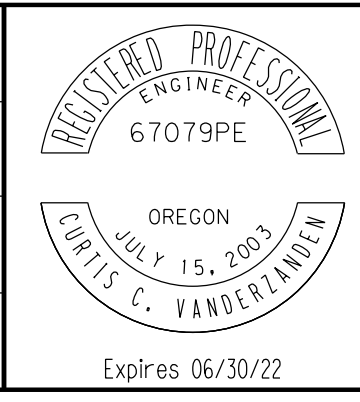


SE HARNEY DR
Sta. "H" 24+31.42 to Sta. "H" 26+12.71

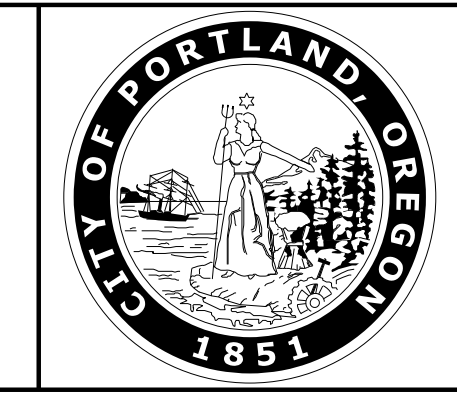
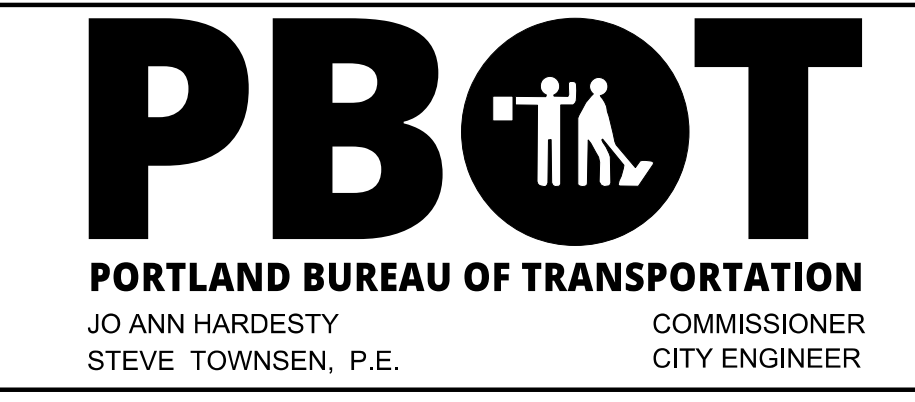


NO.	DATE	DESCRIPTION	APPD.
REVISION			

DESIGNED BY <i>D. Murar / L. Burke</i>	DATE APPROVED Feb 2022
CAD BY <i>R. Cadua</i>	PROGRAM MGR.
CHECKED BY <i>C. Vanderzanden</i>	CONSTR. MGR.



APPROVALS:	
SUPERVISING ENGINEER	REG. PROF. ENGR. NO. 84470PE
CITY ENGINEER	REG. PROF. ENGR. NO. 51538PE



Errol Heights
Street and Storm Drainage Improvements

Typical Sections

1/4 SECTION
PROJECT NO. T00526.D42
SHEET NO. 2A-8