

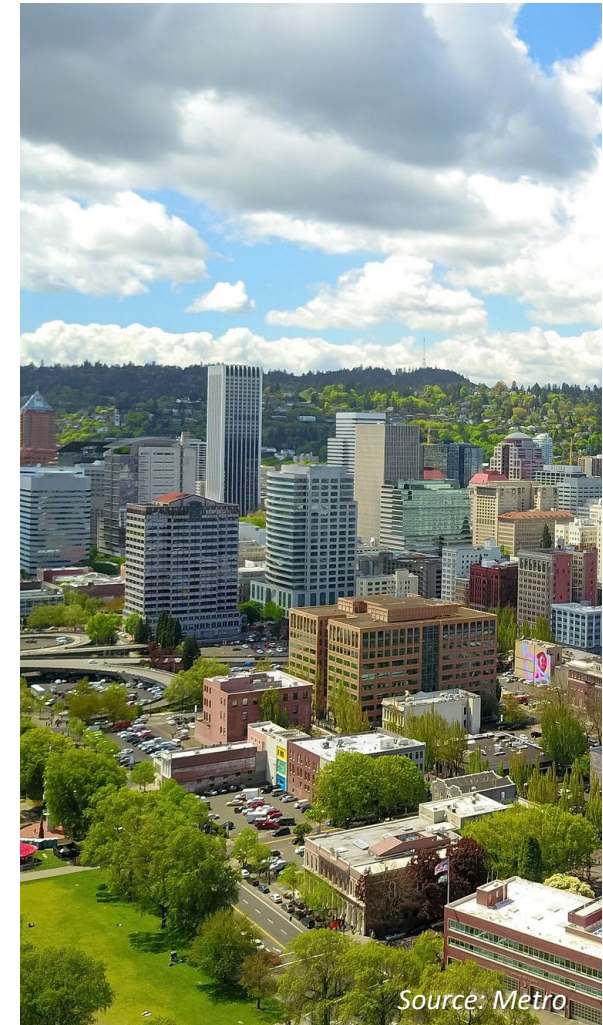


DLCD



Source: Metro

Climate-Friendly and Equitable Communities



Source: Metro

Portland Planning and Sustainability Commission

February 8, 2022



EXECUTIVE ORDER NO. 20-04

**DIRECTING STATE AGENCIES TO TAKE ACTIONS TO REDUCE AND
REGULATE GREENHOUSE GAS EMISSIONS**

WHEREAS, climate change and ocean acidification caused by greenhouse gas (GHG) emissions are having significant detrimental effects on public health and on Oregon's economic vitality, natural resources, and environment; and

WHEREAS, climate change has a disproportionate effect on the physical, mental, financial, and cultural wellbeing of impacted communities, such as Native American tribes, communities of color, rural communities, coastal communities, lower-income households, and other communities traditionally underrepresented in public processes, who typically have fewer resources for adapting to climate change and are therefore the most vulnerable to displacement, adverse health effects, job loss, property damage, and other effects of climate change; and

WHEREAS, climate change is contributing to an increase in the frequency and severity of wildfires in Oregon, endangering public health and safety and damaging rural economies; and

WHEREAS, the world's leading climate scientists, including those in the Oregon Climate Change Research Institute, predict that these serious impacts of climate change will worsen if prompt action is not taken to curb emissions; and

WHEREAS, the Intergovernmental Panel on Climate Change has identified that global temperatures should be limited to 1.5 degrees Celsius or less as necessary to avoid the most dangerous impacts of climate change and remaining below this threshold requires that global emissions be reduced by at least 80 percent by 2050;

Governor Brown's Executive Order 20-04

“Exercise any and all authority and discretion”
to meet Oregon’s climate pollution reduction
goals

Prioritize equity, underserved populations,
specifically historically marginalized
communities

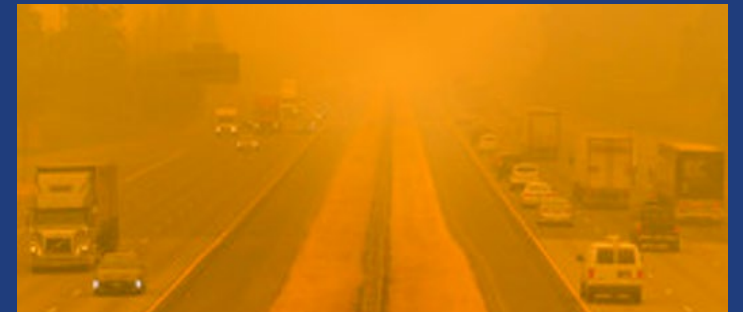
Missing Oregon's Pollution Reduction Targets

CLIMATE & ENVIRONMENT >

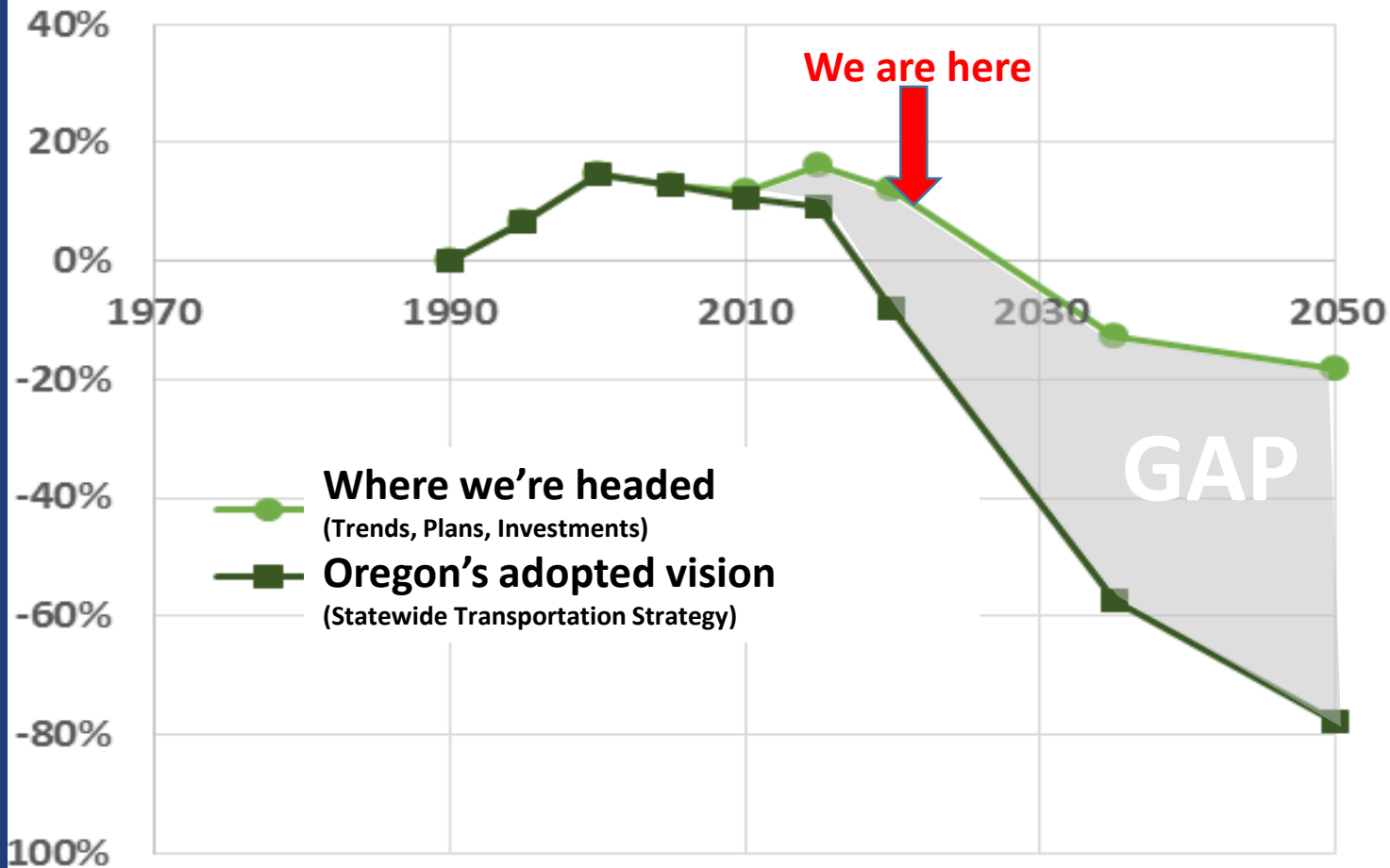
The world needs to cut its emissions seven times as fast to hit climate goals, U.N. report finds

"We're just so far off track," says one co-author, calling for bolder and more urgent action from major emitters.

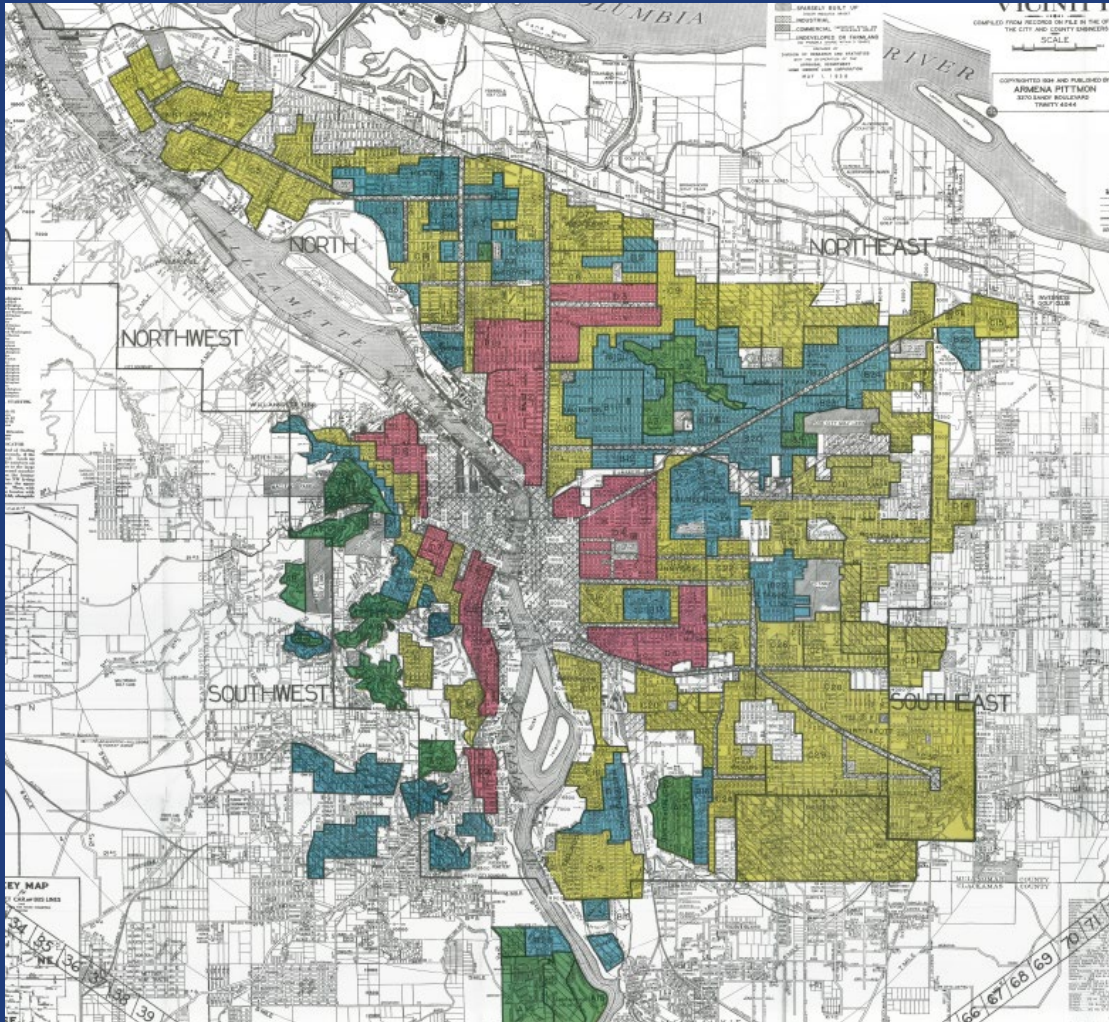
By Brady Dennis



Climate Pollution Change (Light Duty Vehicles)



Inequity and Generational Wealth

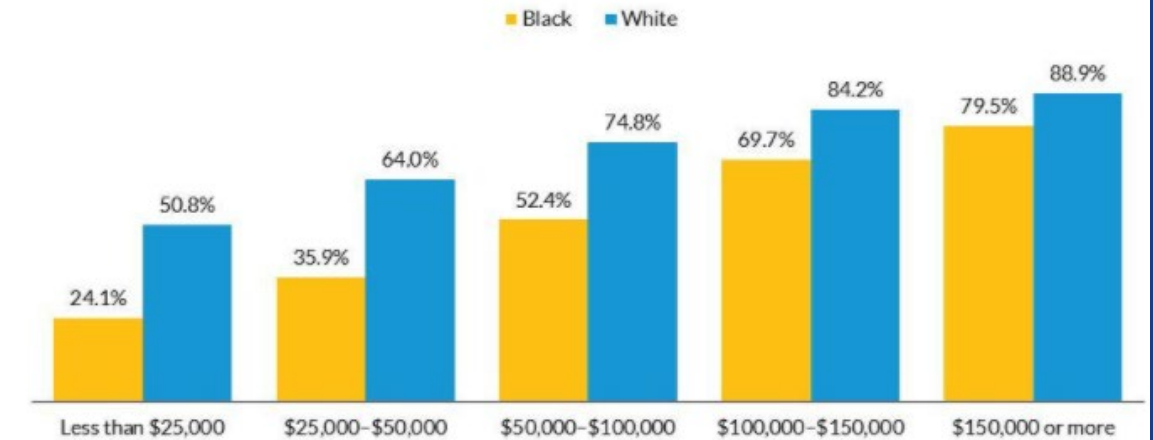


1938 federal Home Owners' Loan Corporation redlining map

Green = best, Blue = "still desirable" Yellow = "Definitely declining" Red = "hazardous"

dsl.richmond.edu/panorama/redlining

Homeownership Rate by Household Income, 2017



Source: 2017 American Community Survey.

URBAN INSTITUTE

71.9% of white households own homes
41.8% of Black households own homes

The 30.1% gap is wider than it was when race-based discrimination against homebuyers was legal.

(2017, Urban Institute)

Oregon's Eight Metropolitan Areas





Two Categories of Rulemaking

Performance monitoring
and reporting under both

**Regional Planning to
Meet Pollution
Reduction Targets**

**Updated Land Use and
Transportation Rules**

Climate Smart Strategy

Regional policies and strategies for reducing emissions



Adopted in 2014 and approved by LCDC in 2015

Incorporated and monitored through the Regional Transportation Plan



Updated Planning Rules

Focus Areas

- Climate-friendly areas
- Reform parking management
- Support electric vehicle charging
- High quality pedestrian, bicycle, and transit infrastructure
- Go beyond focus on motor vehicle congestion standards
- Prioritize and select projects meeting climate/equity outcomes



Climate Friendly Areas within the Portland Metro Region

Proposed Requirements for the Portland Metro Region:

- Metro to establish requirement for local government adoption of Region 2040 centers and land use regulations no later than December 31, 2024
- Local governments that have yet to do so shall comply by December 31, 2025
- Cities over 10,000 to report on affordable housing production, mitigation of displacement, and increasing housing choices within Region 2040 centers every six years

Improving Parking Management

- ✓ Implement best practices for parking code details
- ✓ Cities choose a parking reform approach



- ✓ Populous communities do more parking management



More Populous Communities

Over 100,000

- Implement parking maximums
- If retaining mandates, price 5%/10% of on-street parking spaces at least 50 cents/day by Sept 30, 2023/25

Over 150,000

- Adjust on-street parking prices in town centers and along transit corridors every three years
- Attempt alternatives before approving new parking garages

Electric Vehicle Charging

(*pending review)

By March 31, 2023

For 5+ parking
spaces

New development
must provide
electric capacity
and **conduit** for

20% of spaces, Level 2+
30% more spaces, Level 1+
(residential and mixed use)








Retrofit requirement in negotiations;
likely Portland differential



GHG Mitigation Potential



Up to 11.9% of GHG
emissions from vehicles
accessing the commercial or
multi-family housing building

- Focus on planning for:
 - Pedestrian   
 - Bicycle  
 - Public Transportation  
- Connected, safe, complete networks
- Prioritize:
 - Climate friendly areas
 - Neighborhoods with underserved populations
 - Access to key destinations



Transportation Planning Rules

- Selecting projects based on a variety of prioritization factors
 - Projects across a city in a plan must work to meet climate goals
- How we measure success in the transportation system
 - Look at a variety of factors, not only moving cars



Transportation Planning Rules

Rulemaking Schedule

Date	Land Conservation and Development Commission
February 3	Review draft rules and impact statements Discuss policy questions
February	Draft rules reviewed by Department of Justice
March 1	Draft rules published in Secretary of State Bulletin
March 31-April 1	First public hearing
May 19-20	Adoption hearing

Thank You!

Climate-Friendly and Equitable Communities



Sign up for email updates
oregon.gov/LCD/LAR/Pages/CFEC.aspx