

COMMUNITY IS KEY



PCEF Grant Committee Meeting

December 1, 2021, 6:00 – 8:00 p.m.

— PORTLAND
**CLEAN ENERGY
COMMUNITY BENEFITS
FUND** —



Bureau of Planning and Sustainability

VISIT US ONLINE
portland.gov/bps/cleanenergy

Virtual Participation Check

Guidelines for public participation

- Committee meetings open to the public
- Public invited to comment at around 6:05 p.m.
- Public invited to participate in conversation during break at 7:00 p.m. Must join via Zoom to participate.
- Opportunities for public engagement in other forums/meetings

➔ Guidelines applied to virtual meeting:



Chatbox: open for introductions and public comment. All other times, host-only chats (PCEF Staff).



Raise Hand: used by Committee only.



Video: on for Committee only.



Microphone: public members muted unless giving public comment or for introductions.

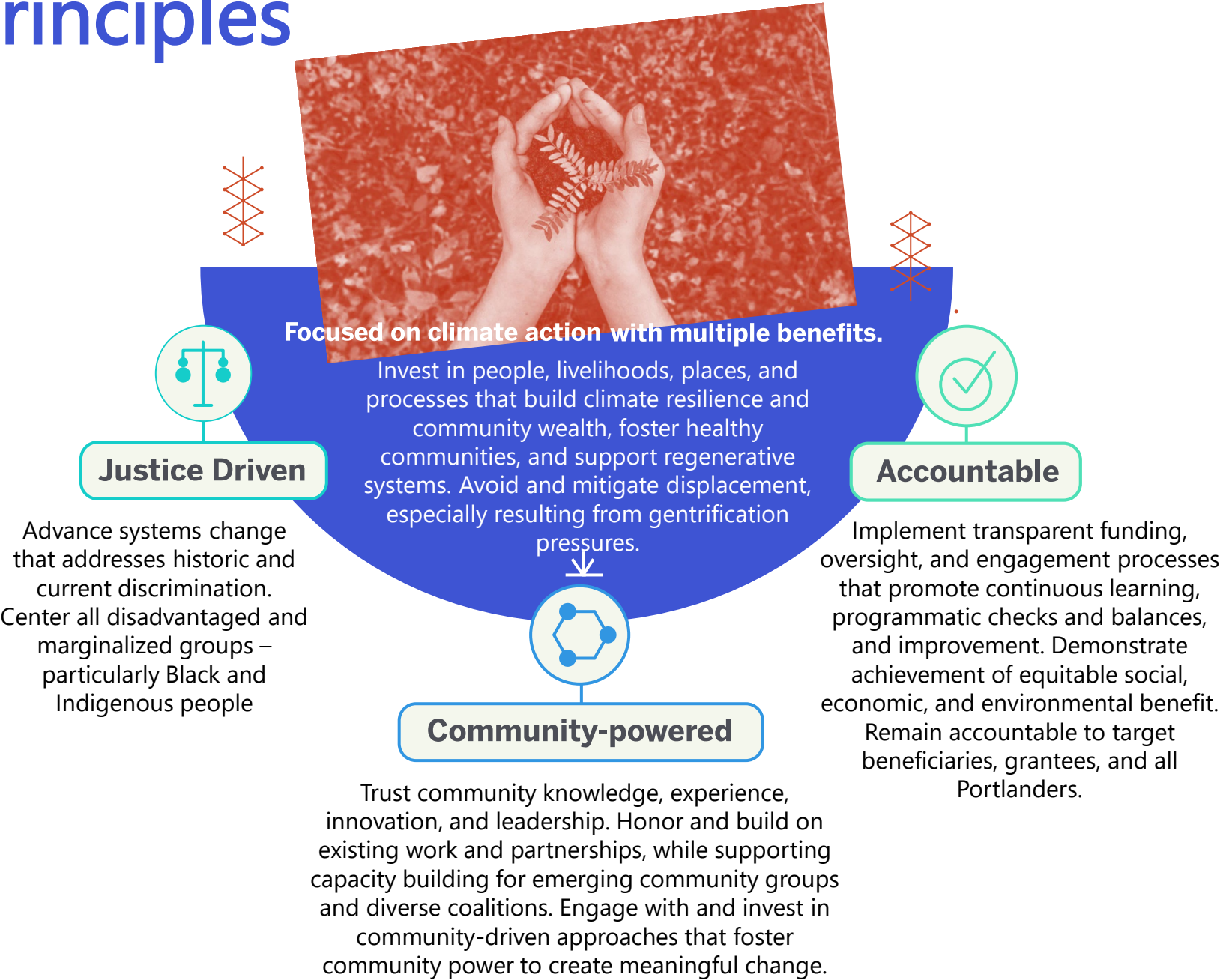


Recording: this meeting is being recorded.



Captioning: this meeting is being captioned; settings > show subtitles.

Guiding Principles



Introductions

Agenda

- | | |
|------|---|
| 6:00 | Introductions |
| 6:05 | Public comment |
| 6:10 | Program updates |
| 6:15 | Mini grant program update |
| 6:55 | Break |
| 7:00 | Committee member/community conversation |
| 7:15 | Committee member recruitment |
| 7:50 | Committee member comments |
| 8:00 | Meeting close |

Program updates

Mini grants.



Big impact.

PCEF | mini grants

PCEF MINI GRANTS

GRANT COMMITTEE UPDATE

Angela Previdelli

Internal Systems and Mini Grant Project Manager

— **PORTLAND** —
CLEAN ENERGY
COMMUNITY BENEFITS
— **FUND** —



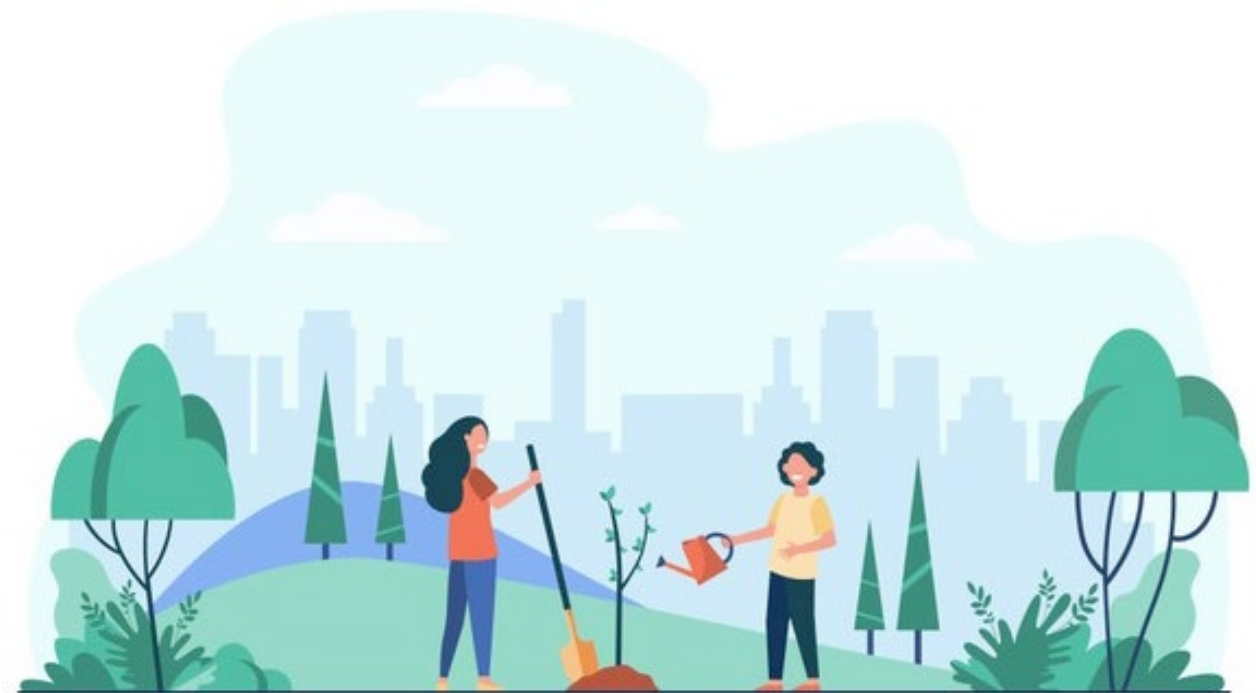
Bureau of Planning and Sustainability



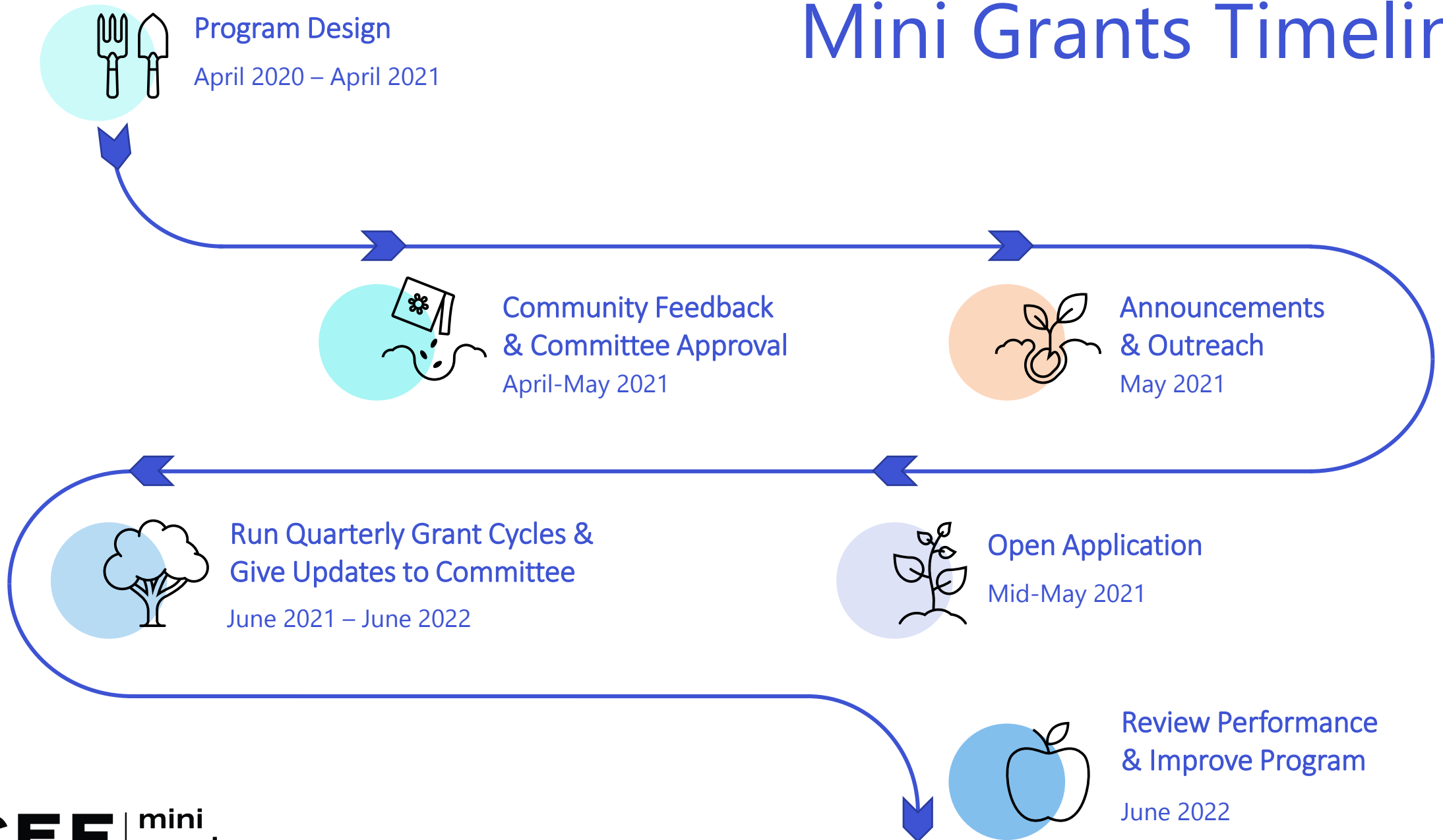
VISIT US ONLINE
portland.gov/bps/cleanenergy

Agenda

- Grant Program Timeline
- Program Purpose and Overview
- Current Results
- Observations & Process Improvements
- Next Steps & Discussion



Mini Grants Timeline



Program Purpose & Overview

PCEF Mini Grants were created to ...

- Respond to small, time-sensitive funding needs
- Create on-ramp to PCEF
- Grow universe of nonprofits doing environmental justice work
- Provide low-barrier funding opportunity that prioritizes small, PCEF priority community reflective organizations

Year One: Program evaluation

Year Two: Grantee evaluation, goal setting, and process improvements



Program Purpose & Overview

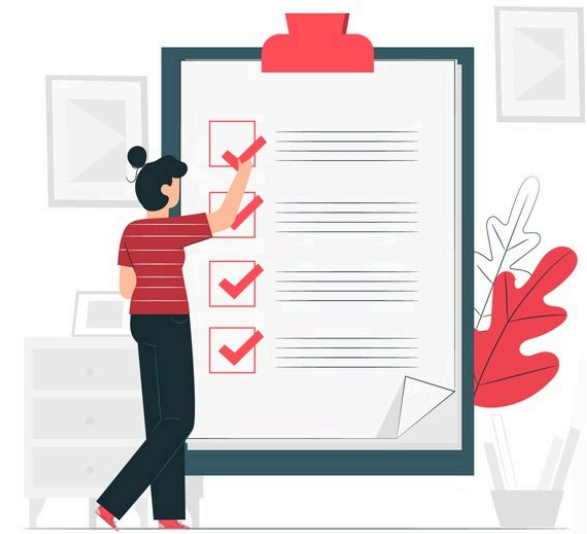
Committee approval details:

- First year will test demand and staff capacity.
- One year grant agreements, up to \$5,000 (limited by City Code)
- First level priority given to small organizations (3 or less FTE) that serve and are led by PCEF priority communities.
- At least two staff complete eligibility screening.
- Prioritized random selection only used if the requested amount is greater than the amount available. Addresses first-come, first-served bias and allows for timely selection process.
- Simple application and reporting to meet needs of small organizations and match \$5,000 funding level.
- Process evaluation after three quarters, full program evaluation after fifth quarter.

Council authorization

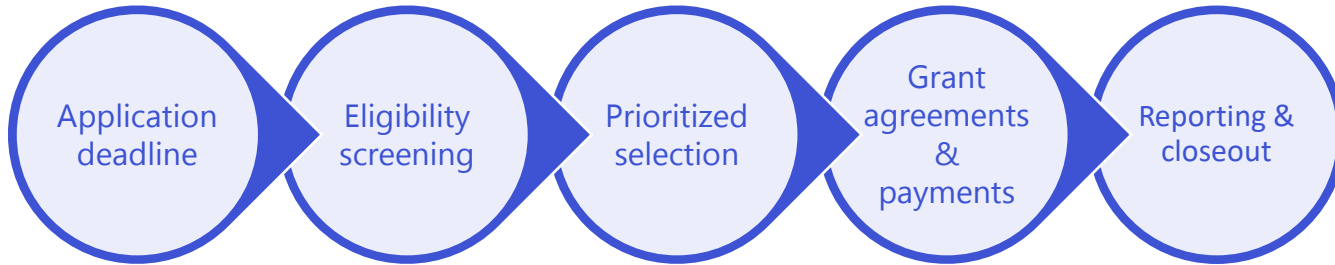
\$400,000 authorized FY 2021-2022

\$100,000 quarterly disbursement



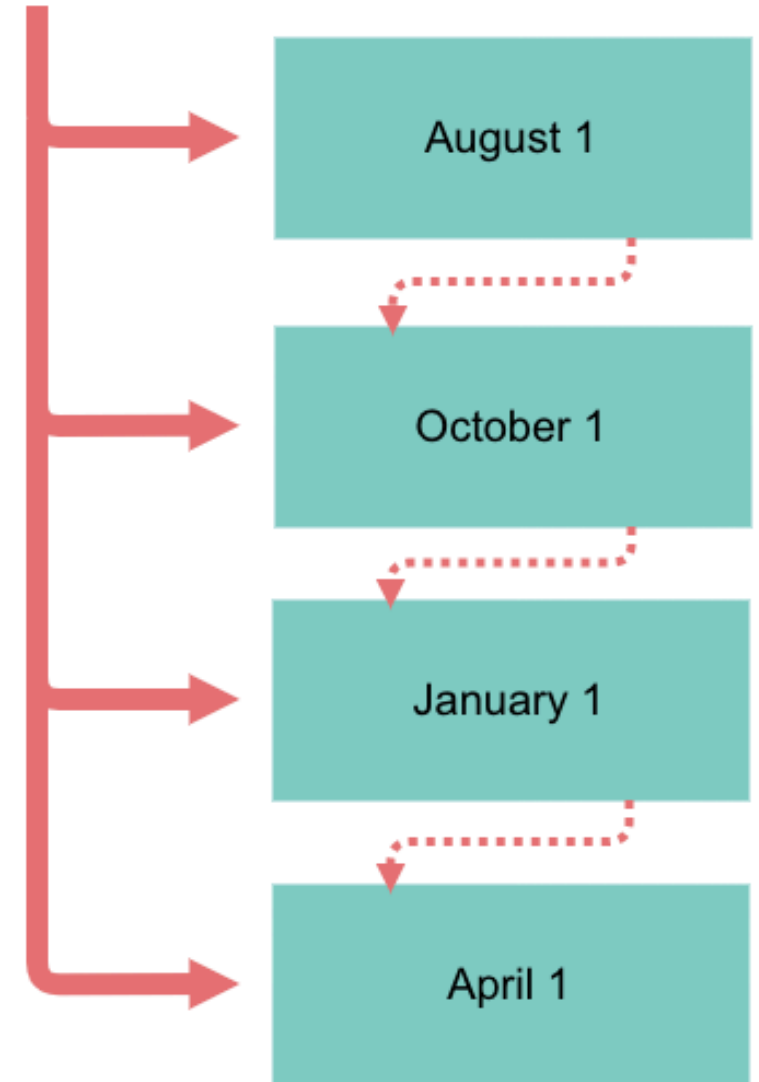
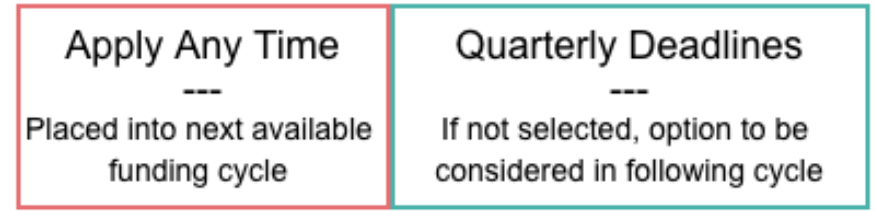
Program Purpose & Overview

Process:



Priority Groups

- **Group 1** – Majority reflective of priority communities, small (3 FTE or less)
- **Group 2** – Majority reflective of priority communities, not small (4 FTE or more)
- **Group 3** – Not majority reflective of priority communities, small (3 FTE or less)
- **Group 4** – Not majority reflective of priority communities, not small (4 FTE or more)



Mini Grant Application Preview

No login required

Available in 8 languages:

- English
- Spanish
- Vietnamese
- Chinese
- Russian
- Laotian
- Somali
- Thai

11. Attendance Costs for Trainings, Workshops, and Education

Examples: Paying for your staff to attend workshops, participate in trainings, attend conferences, participate in capacity building classes ...

Will you use funds to pay for your organization's staff to participate in trainings, workshops, or other educational opportunities?

Yes

No

Approximately how much are you requesting for this funding category?

Keep in mind, the total grant request must add up to \$5,000 or less.

12³

How would you spend the funding? Describe the workshops/trainings/conferences/classes that staff would attend.

Suggested length: 50 words or less

Current Results

August 2021 Cycle

- Total applications: 85
- Total selected: 20
 - All selected from Group 1

October 2021 Cycle

- Total applications: 41
- Total selected: 20
 - 14 selected from Group 1
 - 6 selected from Group 2

August 2021 Cycle

	Group 1	Group 2	Group 3	Group 4	Total across all groups
Total Request	\$238,618.50	\$58,900	\$92,750	\$20,000	\$410,268.50
Total Funded	\$99,215	\$0	\$0	\$0	\$99,215

October 2021 Cycle

	Group 1	Group 2	Group 3	Group 4	Total across all groups
Total Request	\$124,600	\$28,500	\$55,000	\$14,995	\$223,095
Total Funded	\$70,000	\$28,500	\$0	\$0	\$98,500

Grantees, who serve and are majority reflective of PCEF priority populations

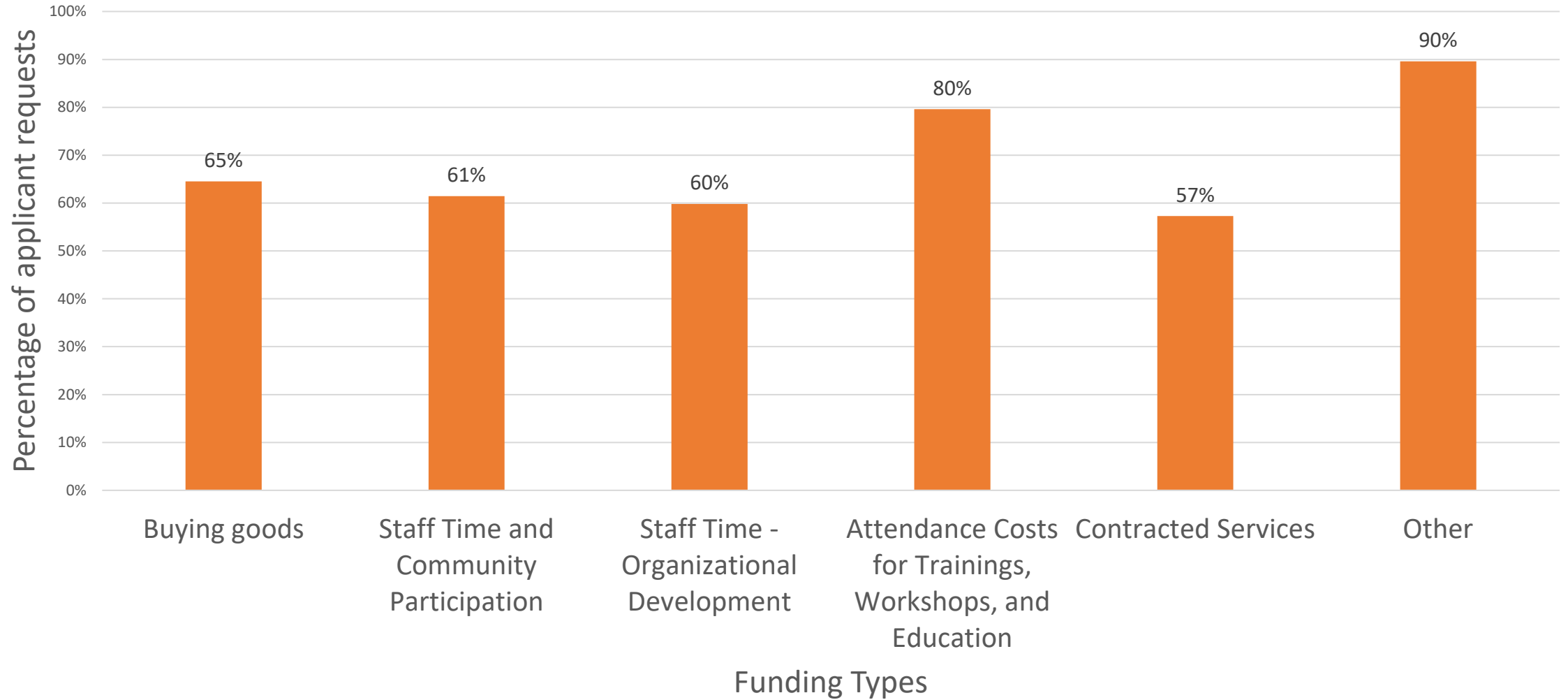
August: 100% (20/20)
 October: 100% (20/20)
 Total: 100% (40/40)

Grantees with three or fewer FTE

August: 100% (20/20)
 October: 70% (14/20)
 Total: 85% (34/40)

Current Results

Applicants: Funding Request Types



Current Results – Grantee Project Examples

See additional detailed descriptions in memo.

- “... educate our community about how to save electricity and living in the community with environmental safety.”
- “... assess our community understanding on environmental justice and their needs. This combines with our three-year strategic plan to develop youth leadership by attracting next generation leaders.”
- “... staff to attend trainings on climate change, resilience, action; Engage the Indigenous community to hear climate change impacts and their ideas for climate adaptation and actions; Gather an Advisory of Indigenous community members who have experience in Indigenous Traditional Ecological Knowledge and Western Bio/Ecology related to climate adaptation.”
- “... an indigenous-led festival that raises awareness about non-human-led restoration, shares education about traditional ecological knowledge, and creates a safe, welcoming, environment to increase access to nature for Black, Indigenous, and people of color.”
- “... maintain eight acres and more land lease while preparing seasonal farmers to buy essential proper agricultural equipment to effectively gain more organic produce to feed communities of color and low income in large quantities.”

Observations & Process Improvement

Observations:

- Mix in types of requests – most requests have been for small project support, many also requesting grant writing support.
- Outreach is key – our outreach/communication efforts impacts the number of applications. Staff are finding balance to understand community demand for program over time.
- Staff capacity – staff capacity limits ability to provide one-on-one assistance to mini grant recipients.
- Demographic questions – Simple application form limits the program's ability to clearly identify applicants who reflect the communities they intend to serve.

Process Improvement:

- Staff edited demographic questions to improve clarity in identifying applicants who reflect PCEF priority communities while maintaining the application's simplicity.
- Plan for focused outreach events and communications strategies to promote the program throughout the year.



Next Steps & Discussion

Next Steps:

- Complete third grant cycle selections in January
- Spring 2022 - work on program performance evaluation
- Present to Grant Committee ahead of April 2022 City Council ordinance with recommendations on second year program plans
- Summer 2022 – start evaluating grantee performance

Discussion Questions:

- Do Committee members have reflections based on information shared and your understanding of program intent?
- As we plan for performance evaluation next spring, is there any information you want to see us collect or analyze that wasn't already discussed?
- Any questions for staff?

Break (20 min)

Until 7:15pm

Members of the public joining via Zoom are able to participate in conversation with Committee members

Committee member recruitment

Committee member comments

COMMUNITY IS KEY



— PORTLAND —
**CLEAN ENERGY
COMMUNITY BENEFITS
FUND** —



Bureau of Planning and Sustainability

A program by City of Portland,
Bureau of Planning and Sustainability
VISIT portland.gov/bps/cleanenergy