

TRANSITION PROJECTS

# SNAPSHOT OF HOMELESSNESS

IN MULTNOMAH COUNTY

# 2019



# -4%

## DECREASE IN OVERALL HOMELESSNESS 2017-2019

### 4,015

PEOPLE EXPERIENCED HOMELESSNESS ON ANY GIVEN NIGHT

### 50%

WERE SHELTERED



### 50%

WERE UNSHELTERED



### 44%

WERE CHRONICALLY HOMELESS



### IN MULTNOMAH COUNTY

HOMELESSNESS **DISPROPORTIONATELY IMPACTS** PEOPLE OF COLOR:

PEOPLE OF COLOR REPRESENT

## 29.5%

OF THE TOTAL POPULATION

PEOPLE OF COLOR REPRESENT

## 38.1%

OF THE HOMELESS POPULATION

HOMELESSNESS IS **ON THE RISE** AMONG THESE GROUPS:

PEOPLE OVER AGE 70

PEOPLE WITH DISABILITIES

## +14%

CHRONICALLY HOMELESS

## +37%

## +75%

### HOW WE COMPARE

TO OTHER WEST COAST CITIES...

## 2017 VS. 2019:

**SEATTLE - 3% DECREASE,** NOW WITH A TOTAL OF 11,199 PEOPLE

**PORTLAND - 4% DECREASE,** NOW WITH A TOTAL OF 4,015 PEOPLE

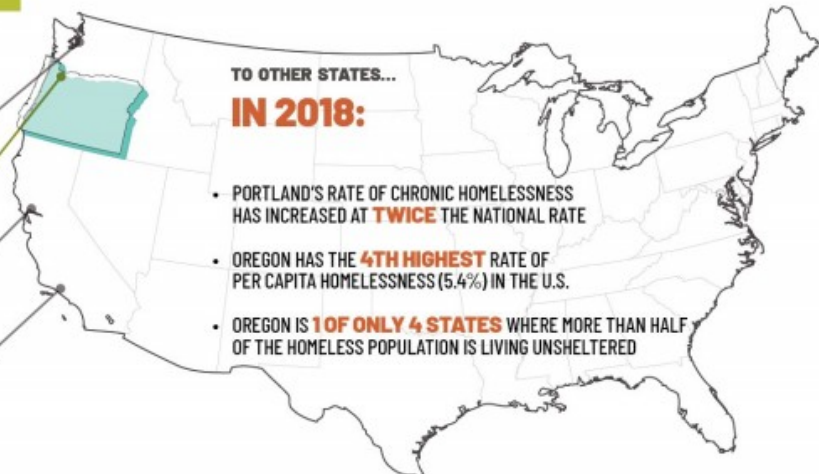
**OAKLAND - 47% INCREASE,** NOW WITH A TOTAL OF 8,022 PEOPLE

**LOS ANGELES - 2% INCREASE,** NOW WITH A TOTAL OF 58,936 PEOPLE

TO OTHER STATES...

## IN 2018:

- PORTLAND'S RATE OF CHRONIC HOMELESSNESS HAS INCREASED AT **TWICE** THE NATIONAL RATE
- OREGON HAS THE **4TH HIGHEST** RATE OF PER CAPITA HOMELESSNESS (5.4%) IN THE U.S.
- OREGON IS **1 OF ONLY 4 STATES** WHERE MORE THAN HALF OF THE HOMELESS POPULATION IS LIVING UNSHELTERED



TPROJECTS.ORG

# WHAT WE NEED TO END HOMELESSNESS

## MORE RENTAL ASSISTANCE



ROBUST FUNDING IS NEEDED TO SUPPORT HOUSING STABILITY FOR VERY LOW INCOME HOUSEHOLDS



THE PERCENTAGE OF FEDERAL DISCRETIONARY BUDGET GOING TO THE DEPARTMENT OF HOUSING AND URBAN DEVELOPMENT HAS **DECREASED FROM 14.8%** OF THE BUDGET IN 1978 **TO JUST 2.7%** OF THE BUDGET IN 2018.

## MORE SUPPORTIVE SERVICES



AS PEOPLE BECOME INCREASINGLY VULNERABLE, THEY WILL REQUIRE DEEPER LEVELS OF SUPPORT TO END THEIR HOMELESSNESS AND STAY HOUSED



BETWEEN 2017 AND 2019, **50% MORE PEOPLE ACCESSED HOMELESS SERVICES IN MULTNOMAH COUNTY**, HELPING US ACHIEVE A 4% REDUCTION IN HOMELESSNESS.

## MORE AFFORDABLE HOUSING



LIVING IN PORTLAND IS CURRENTLY UNAFFORDABLE ON A FULL-TIME, MINIMUM WAGE SALARY



**HALF** OF PORTLAND RENTERS SPEND AT **LEAST A THIRD** OF THEIR INCOME ON RENT, LEAVING THEM AT GREATER RISK OF HOMELESSNESS.

## GET INVOLVED AT TPROJECTS.ORG

VOLUNTEER



DONATE



ADVOCATE



## TO LEARN MORE

VISIT [TPROJECTS.ORG/SNAPSHOT](https://tprojects.org/snapshot) OR LIKE US ON SOCIAL MEDIA [@TRANSITIONPROJECTS](https://twitter.com/transitionprojects)

