

TABLE OF CONTENTS

SITE + BUILDING



SITE PLAN AND SITE DIAGRAMS

C.2

Site Plan | C.3

Site Diagrams | C.4

Ground Floor Access Plan | C.7

SITE DESIGN - LANDSCAPE

C.8

Landscape Plans & Materials | C.9

DESIGN DRAWINGS

C.12

Floor Plans | C.13

Elevations (Black & White + Color) | C.18

Building Sections | C.26

Composite Building Drawings | C.28

Materials Palette | C.35

Exterior Lighting | C.36

PRODUCTS - CUT SHEETS

C.38

Windows | C.39

Cladding | C.41

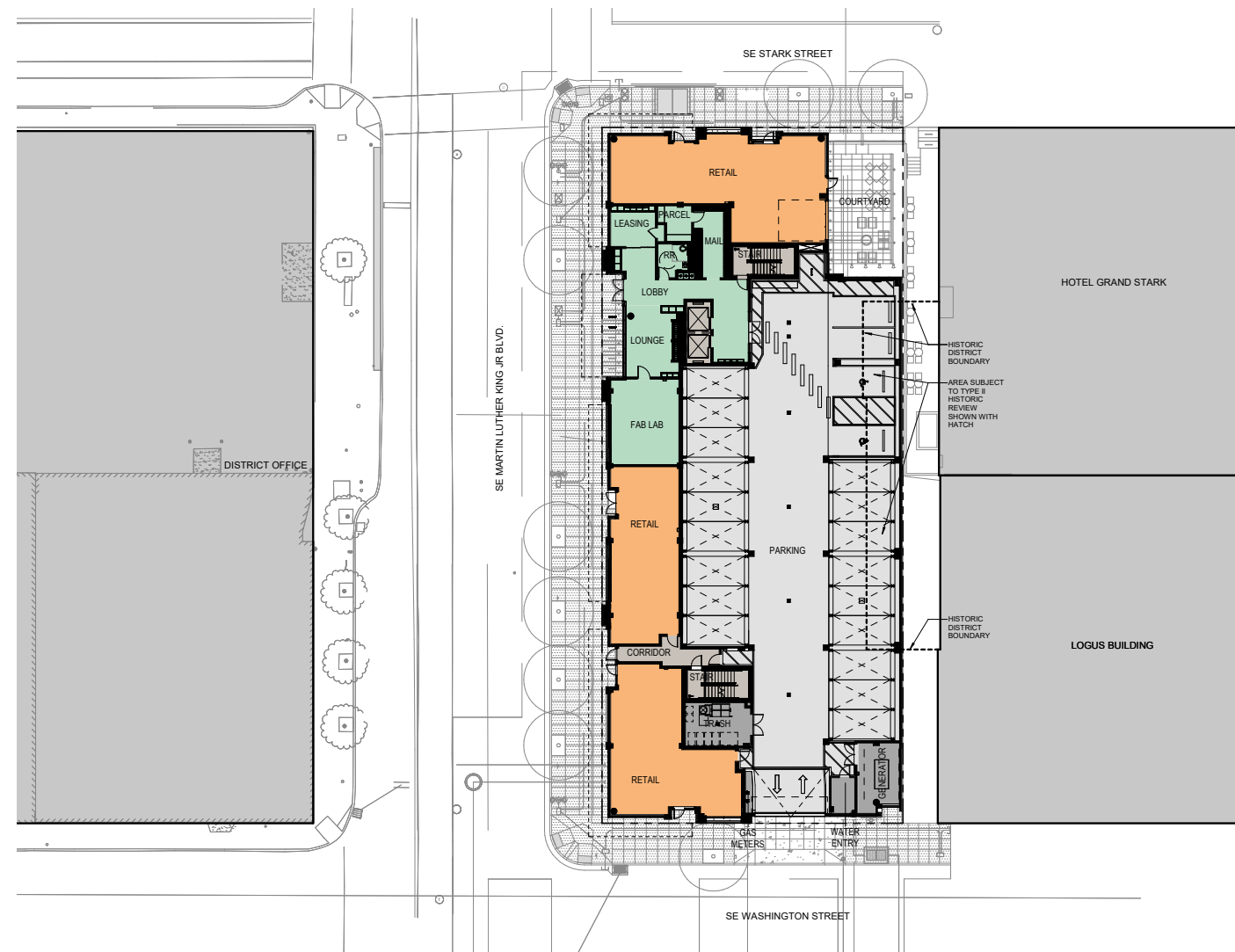
Louvers | C.44

Overhead Doors | C.45



SITE PLAN AND SITE DIAGRAMS

1. Overall Site Plan
2. Site Existing Condition Diagrams
3. Ground Floor - Site Access



1 BUILDING
550 MARTIN LUTHER KING JR. BLVD

112,193
Total GSF (inc. UG Parking)

3,973
GSF of Commercial Space

883
GSF of Courtyard Space

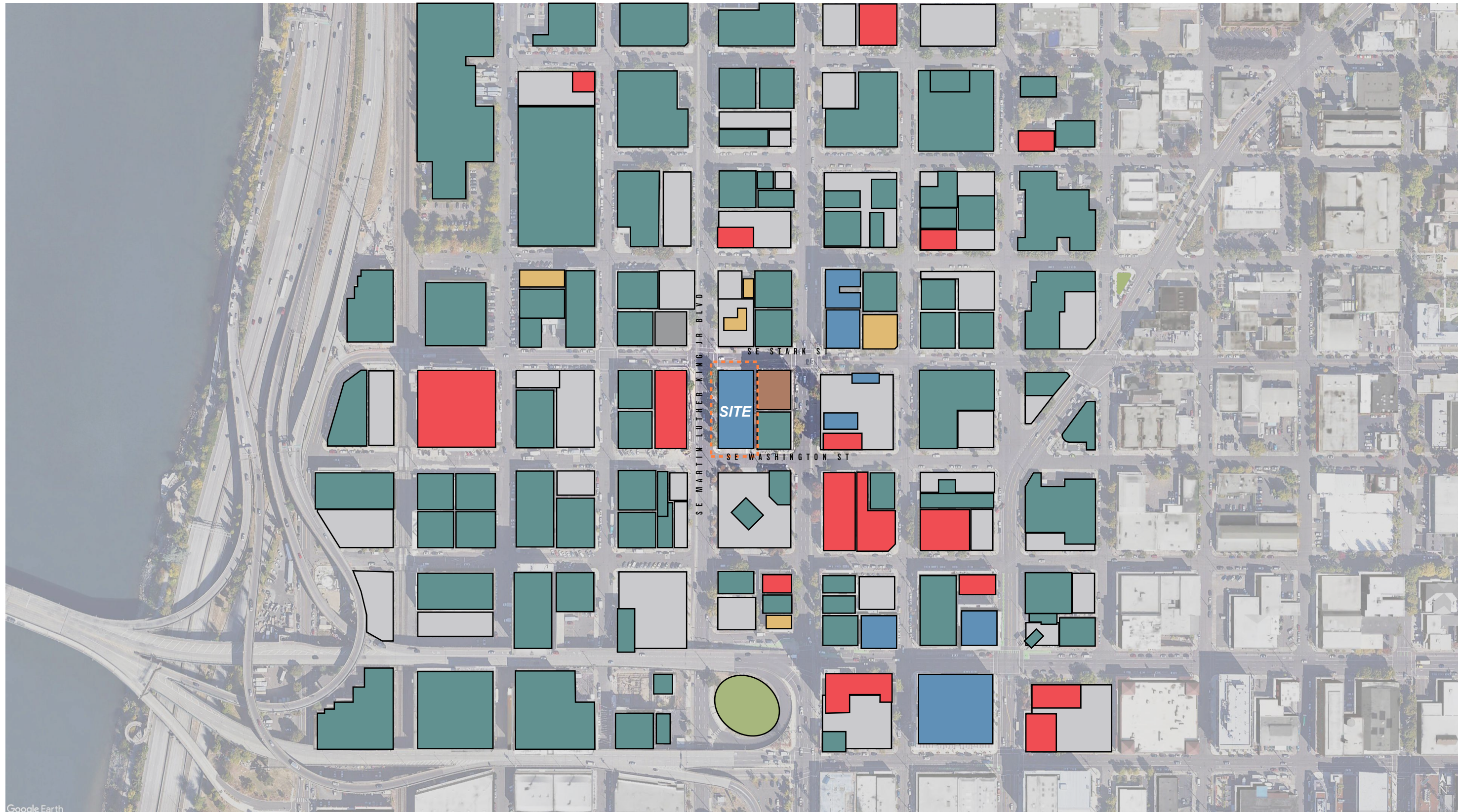
132
Units

59
Podium parking stalls

- RETAIL
- RESIDENTIAL
- CIRCULATION
- CIRCULATION
- SERVICE

OVERALL 550 MLK SITE





Google Earth

LEGEND

- | | | | |
|--|--|---|--|
| ■ Residential | ■ Event, entertainment | ■ Office | ■ Public park |
| ■ Hotel | ■ Structured parking | ■ Commercial, other | ■ Open space |
| ■ Surface parking | | | |

SITE DIAGRAM : PRIMARY LAND USE



NOTABLE BUSINESSES

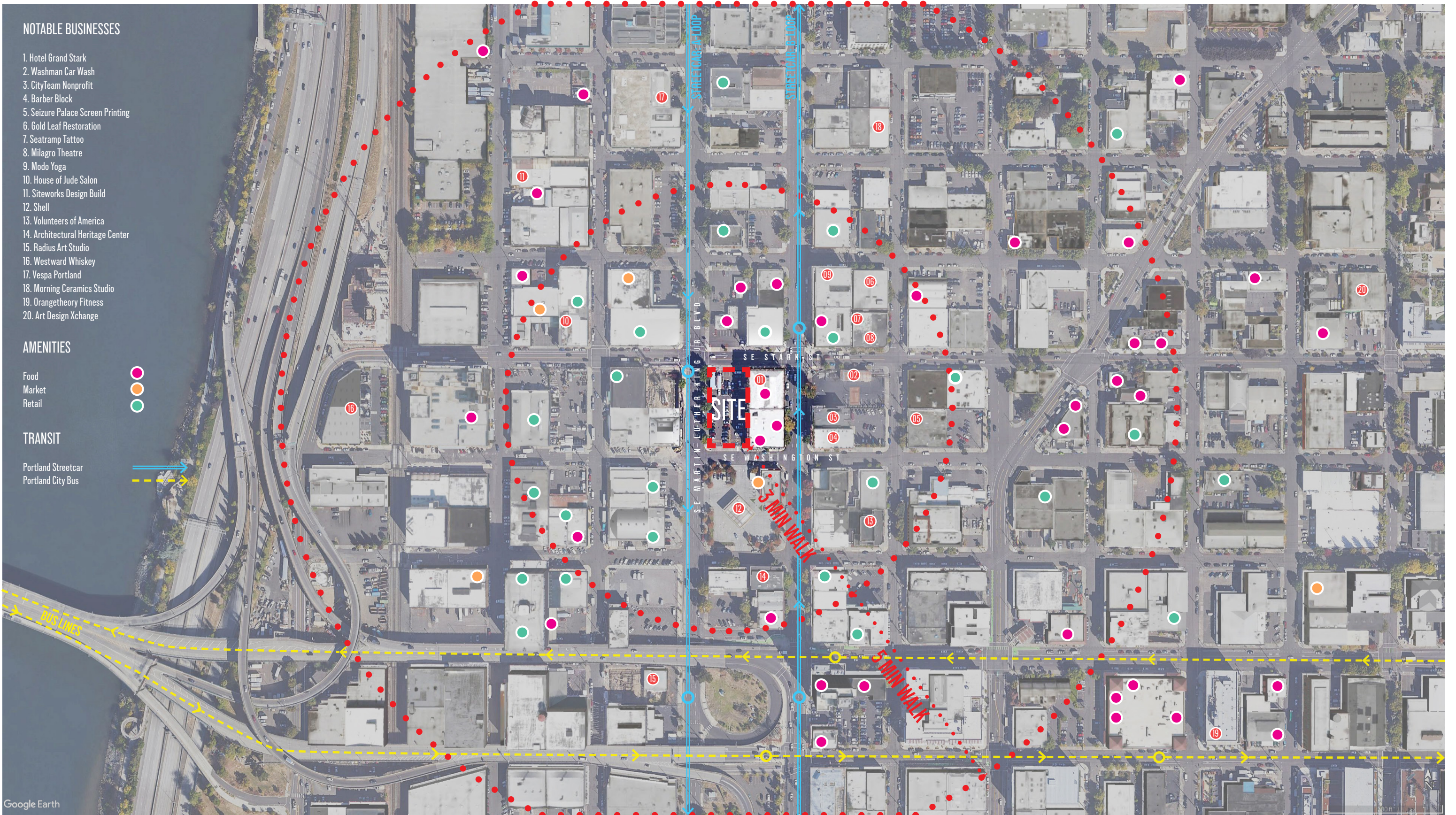
1. Hotel Grand Stark
2. Washman Car Wash
3. CityTeam Nonprofit
4. Barber Block
5. Seizure Palace Screen Printing
6. Gold Leaf Restoration
7. Seatramp Tattoo
8. Milagro Theatre
9. Modo Yoga
10. House of Jude Salon
11. Siteworks Design Build
12. Shell
13. Volunteers of America
14. Architectural Heritage Center
15. Radius Art Studio
16. Westward Whiskey
17. Vespa Portland
18. Morning Ceramics Studio
19. Orangetheory Fitness
20. Art Design Xchange

AMENITIES

- Food ●
- Market ●
- Retail ●

TRANSIT

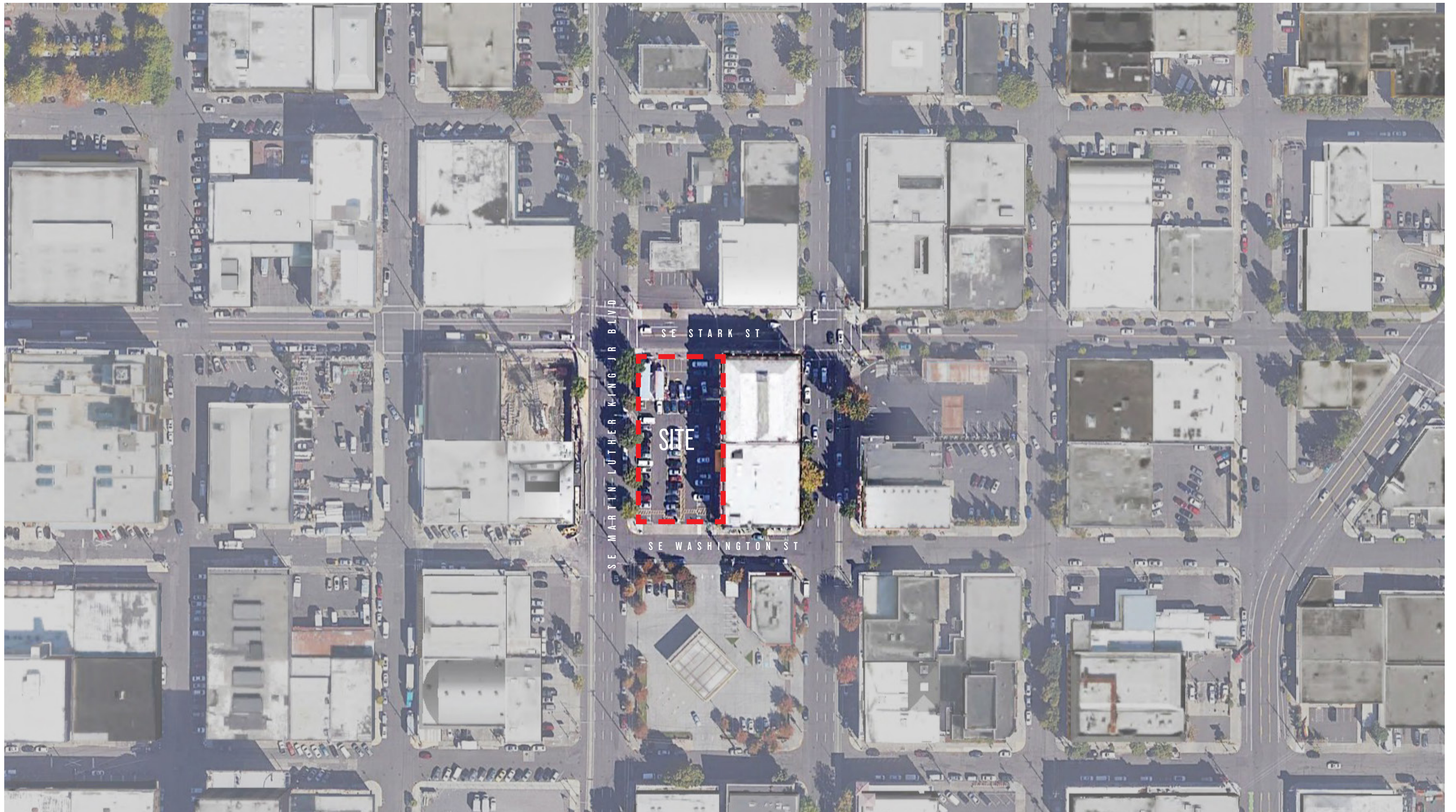
- Portland Streetcar →
- Portland City Bus →



Google Earth

SITE DIAGRAM : TRANSPORTATION





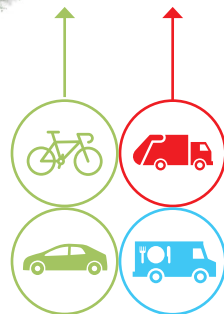
EXISTING CONDITIONS - AERIAL





550 SE MLK BLVD
 6 Levels of Residential
 112,193 Total GSF

- RETAIL
- RESIDENTIAL
- PARKING
- CIRCULATION
- SERVICE



GROUND FLOOR - SITE ACCESS





SITE DESIGN - LANDSCAPE

1. Ground Floor Landscape
2. Courtyard Landscape
3. Level 2 and Roof Landscape



CHIONANTHUS RETUSUS
CHINESE FRINGETREE
SE MARTIN LUTHER KING JR BOULEVARD



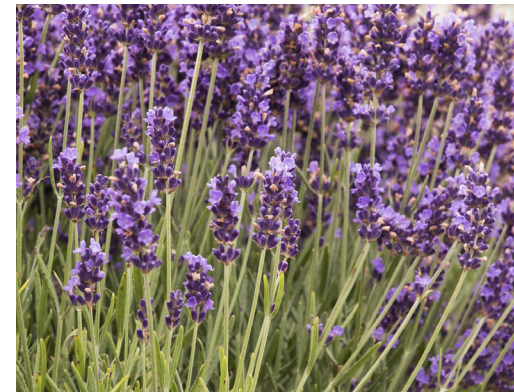
ULMUS 'FRONTIER'
FRONTIER ELM
SE STARK STREET



QUERCUS ACUTISSIMA
SAWTOOTH OAK
SE WASHINGTON STREET



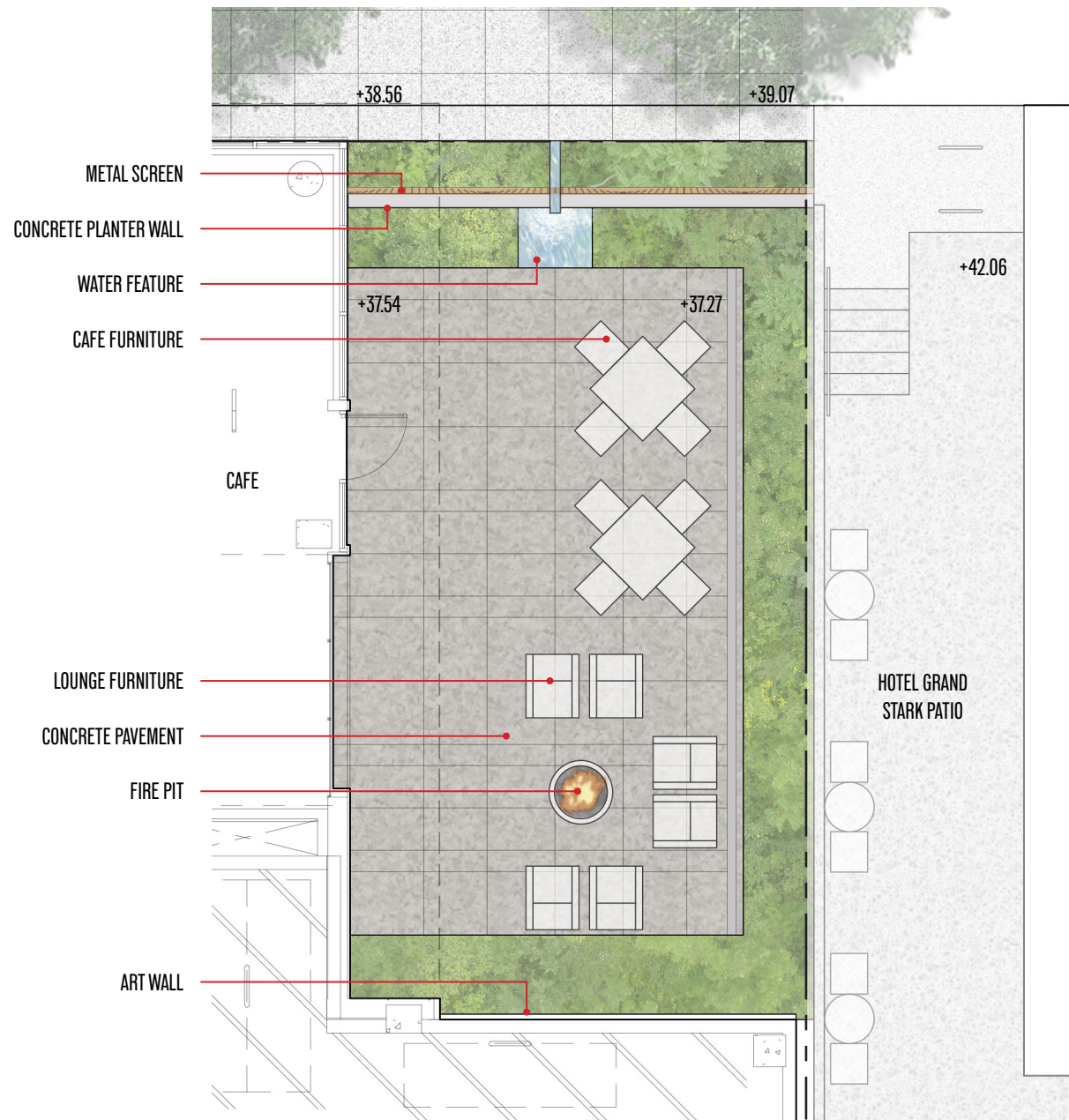
LIRIOPE MUSCARI 'BIG BLUE'
BIG BLUE LILYTURF



LAVANDULA ANGUSTIFOLIA 'HIDCOTE BLUE'
HIDCOTE BLUE ENGLISH LAVENDER

GROUND FLOOR LANDSCAPE





NANDINA DOMESTICA
HEAVENLY BAMBOO



FATSIA JAPONICA
JAPANESE ARALIA



POLYSTICHUM MUNITUM
WESTERN SWORD FERN



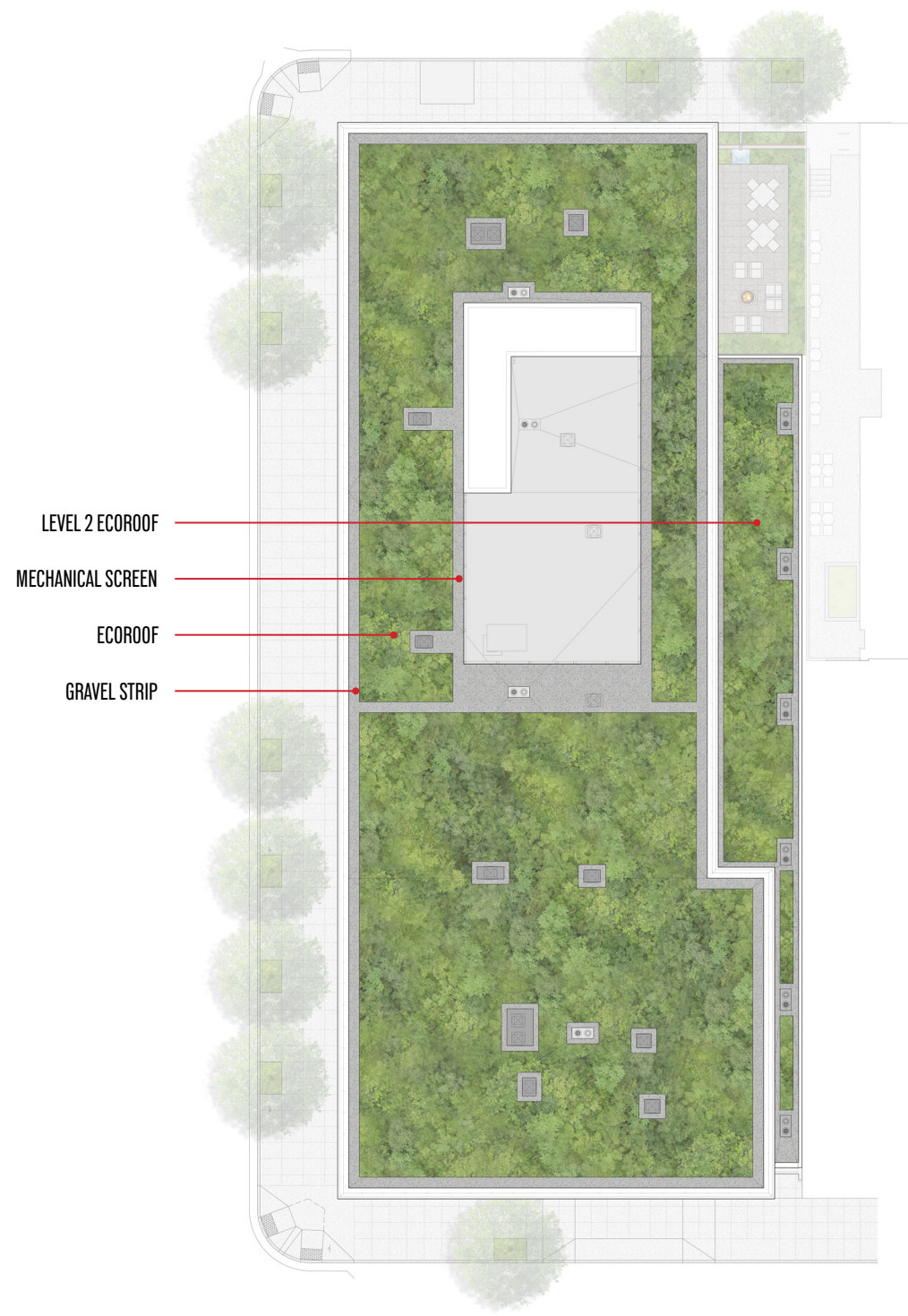
LIRIOPE MUSCARI 'BIG BLUE'
BIG BLUE LILYTURF



SARCOCOCCA HOOKERIANA 'HUMILIS'
SWEETBOX



HYDRANGEA INTEGRIFOLIA 'TAIPING SHAN'
TAIPING SHAN CLIMBING HYDRANGEA

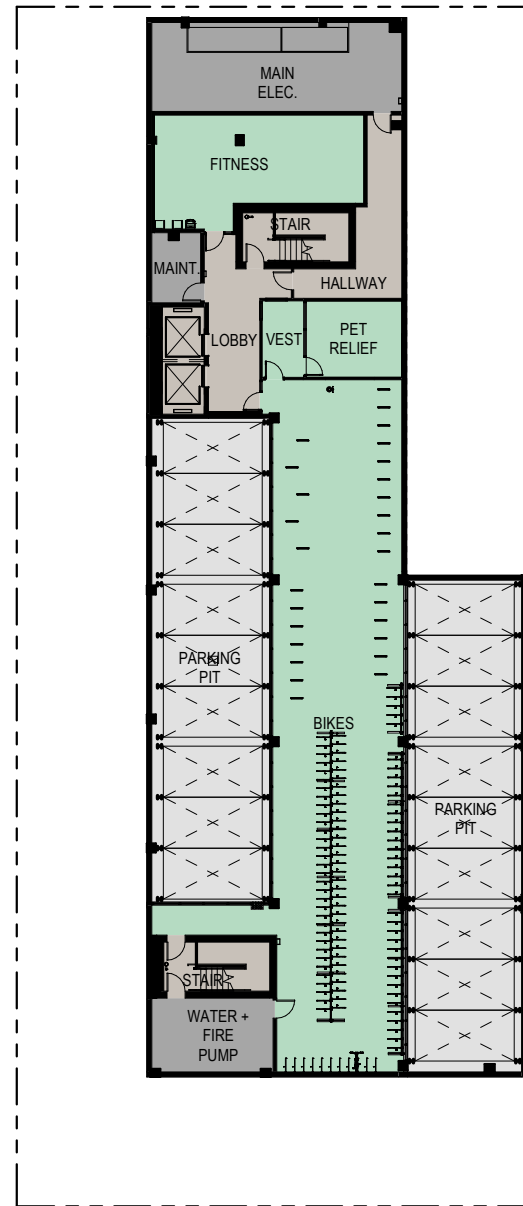


SEDUM SPECIES VARIETIES



DESIGN DRAWINGS

1. Floor Plans
2. Building Elevations
3. Building Sections
4. Composite Sheets
5. Materials Palette
6. Lighting Plans



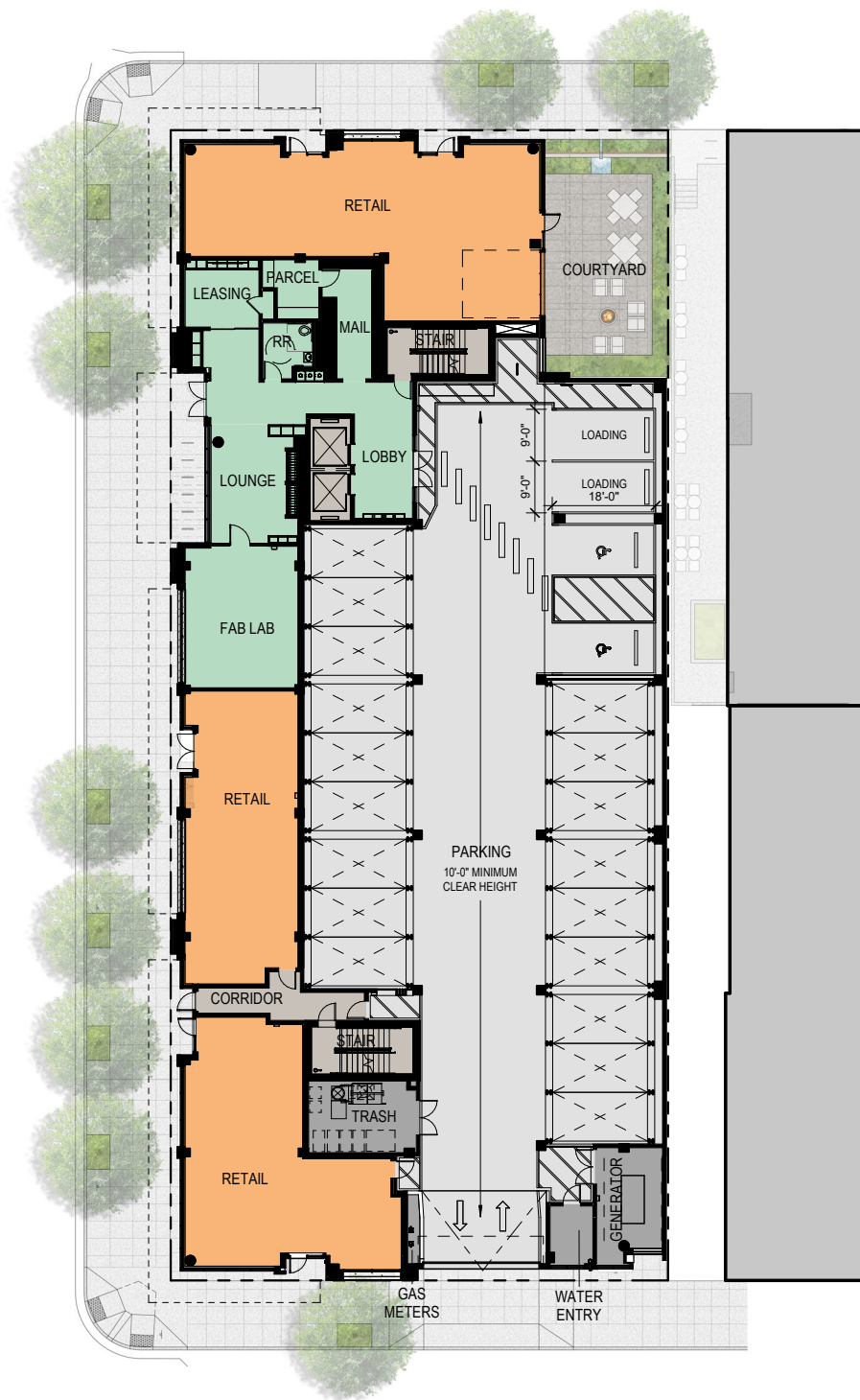
9,330
Total GSF (inc. UG Parking)

170
Bike Parking Stalls

- RETAIL
- RESIDENTIAL
- PARKING
- CIRCULATION
- SERVICE

BELOW GRADE FLOOR PLAN





15,578
Total GSF

3,973
NSF of Retail Space

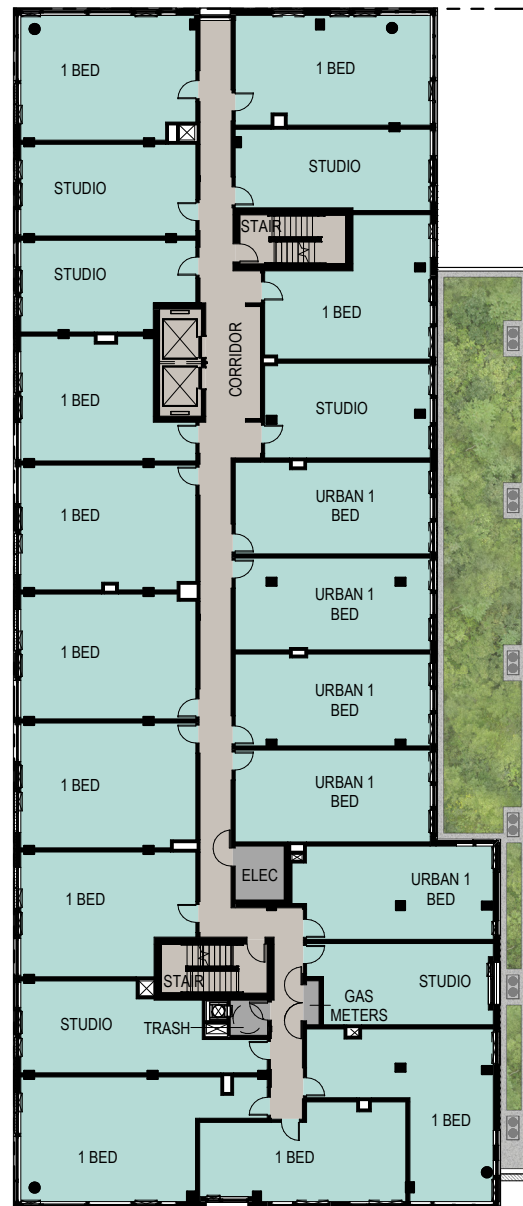
11
Short Term Bike Stalls

4
Bike Stalls

- RETAIL
- RESIDENTIAL
- PARKING
- CIRCULATION
- SERVICE

GROUND FLOOR PLAN





14,548
Total GSF

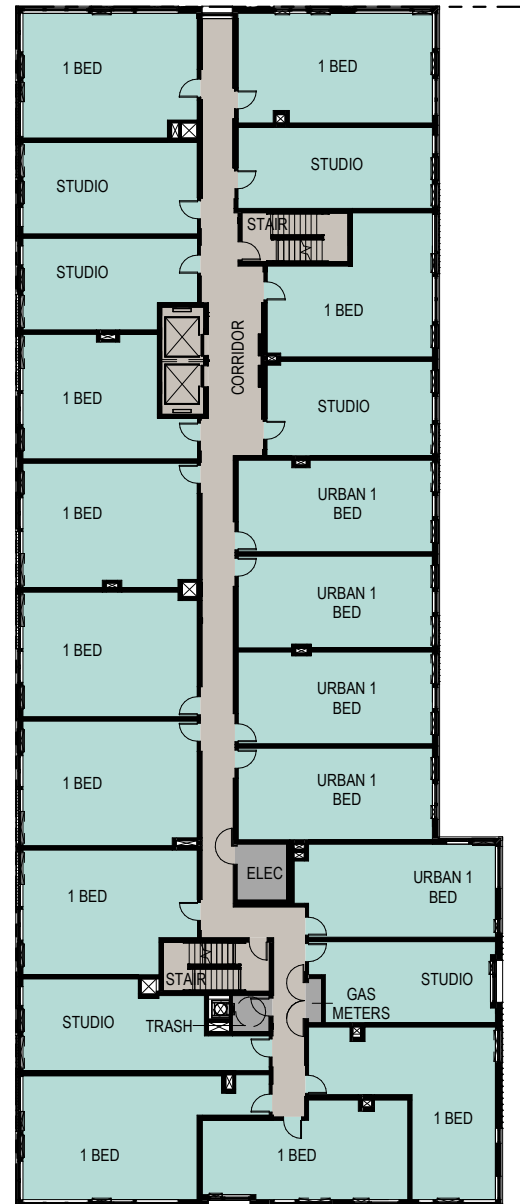
22
Units

5
In-Unit Bike Parking Stalls

- RETAIL
- RESIDENTIAL
- PARKING
- CIRCULATION
- SERVICE

LEVEL 2 FLOOR PLAN





14,548
Total GSF

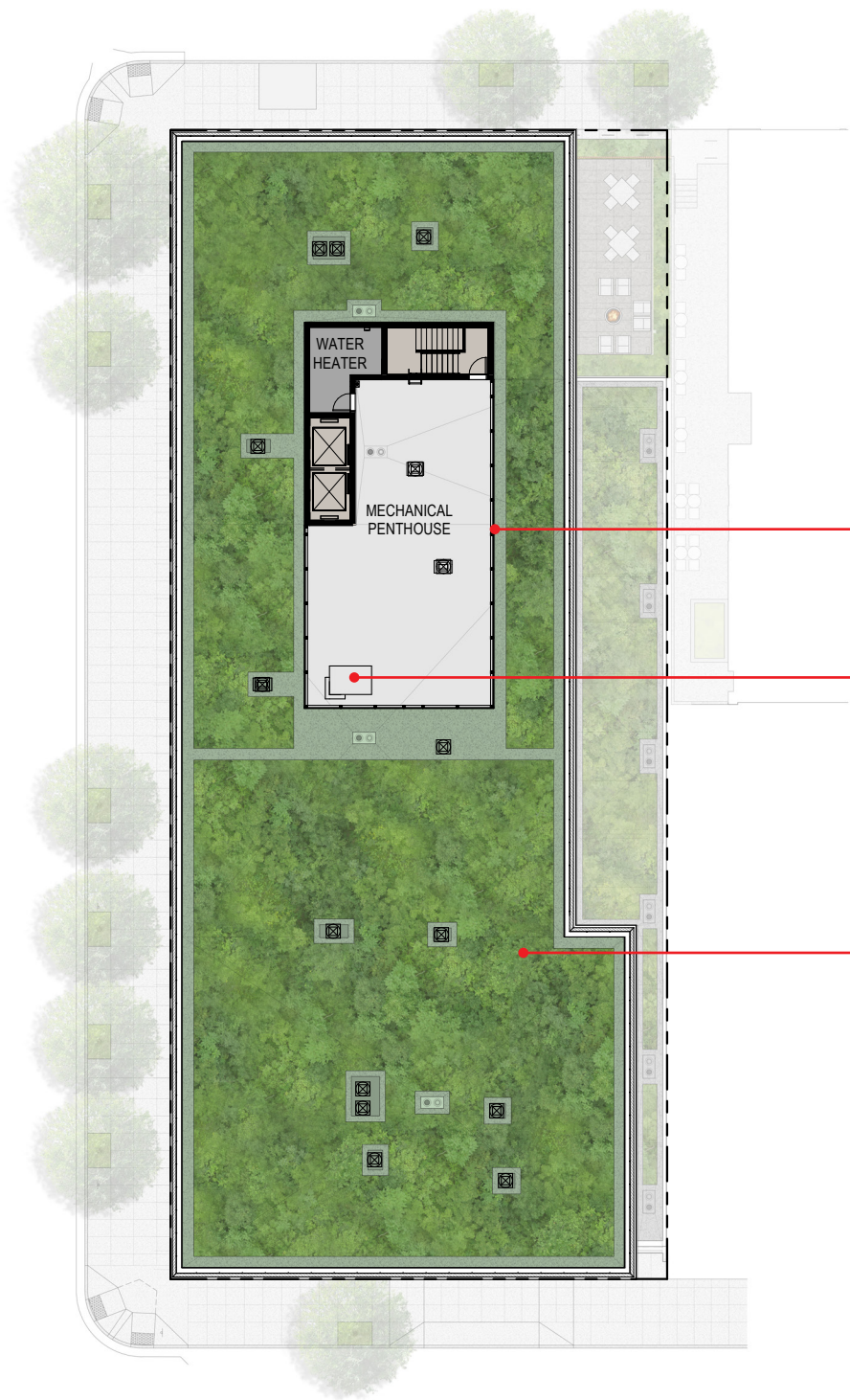
22
Units

5
In-Unit Bike Parking Stalls

- RETAIL
- RESIDENTIAL
- PARKING
- CIRCULATION
- SERVICE

TYPICAL PLAN - FLOOR 03-07





Screen for Mechanical.

Mechanical Equipment.

Eco Roof.

- RETAIL
- RESIDENTIAL
- PARKING
- CIRCULATION
- SERVICE

ROOF PLAN





WEST ELEVATION





WEST ELEVATION



NORTH ELEVATION

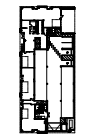




NORTH ELEVATION



550-6

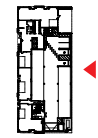


EAST ELEVATION





550-6



EAST ELEVATION





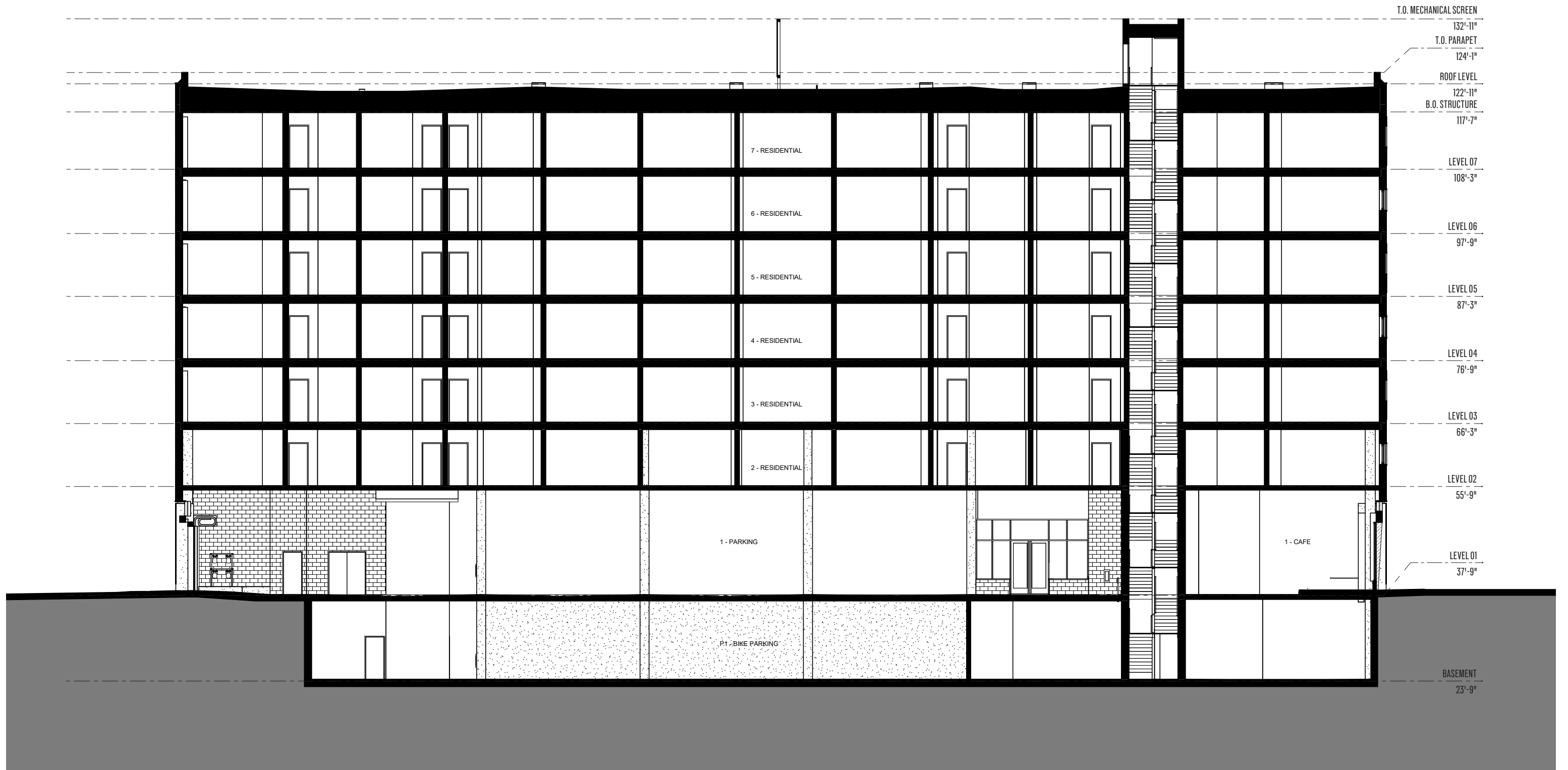
SOUTH ELEVATION



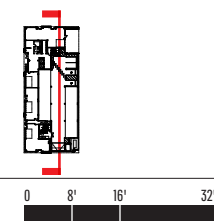


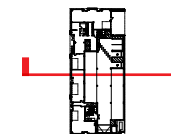
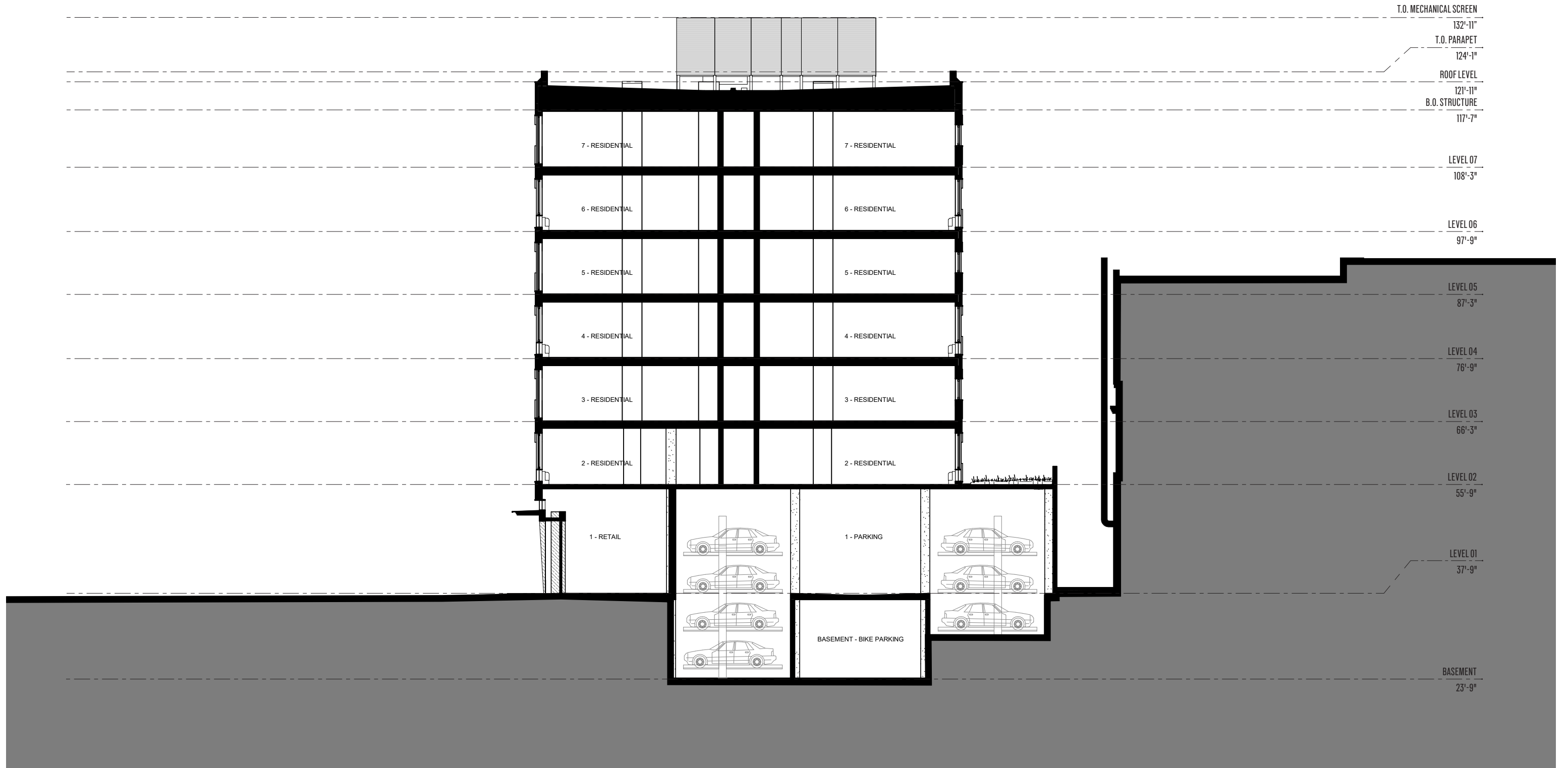
SOUTH ELEVATION





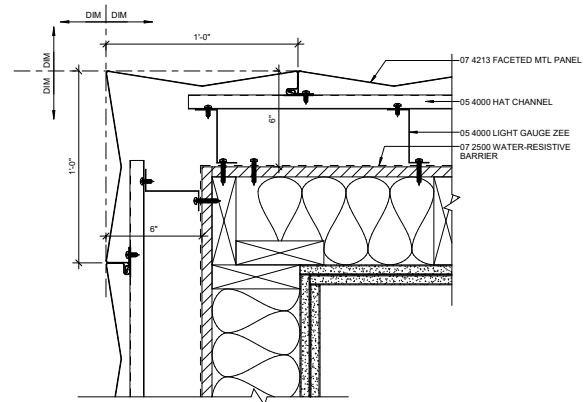
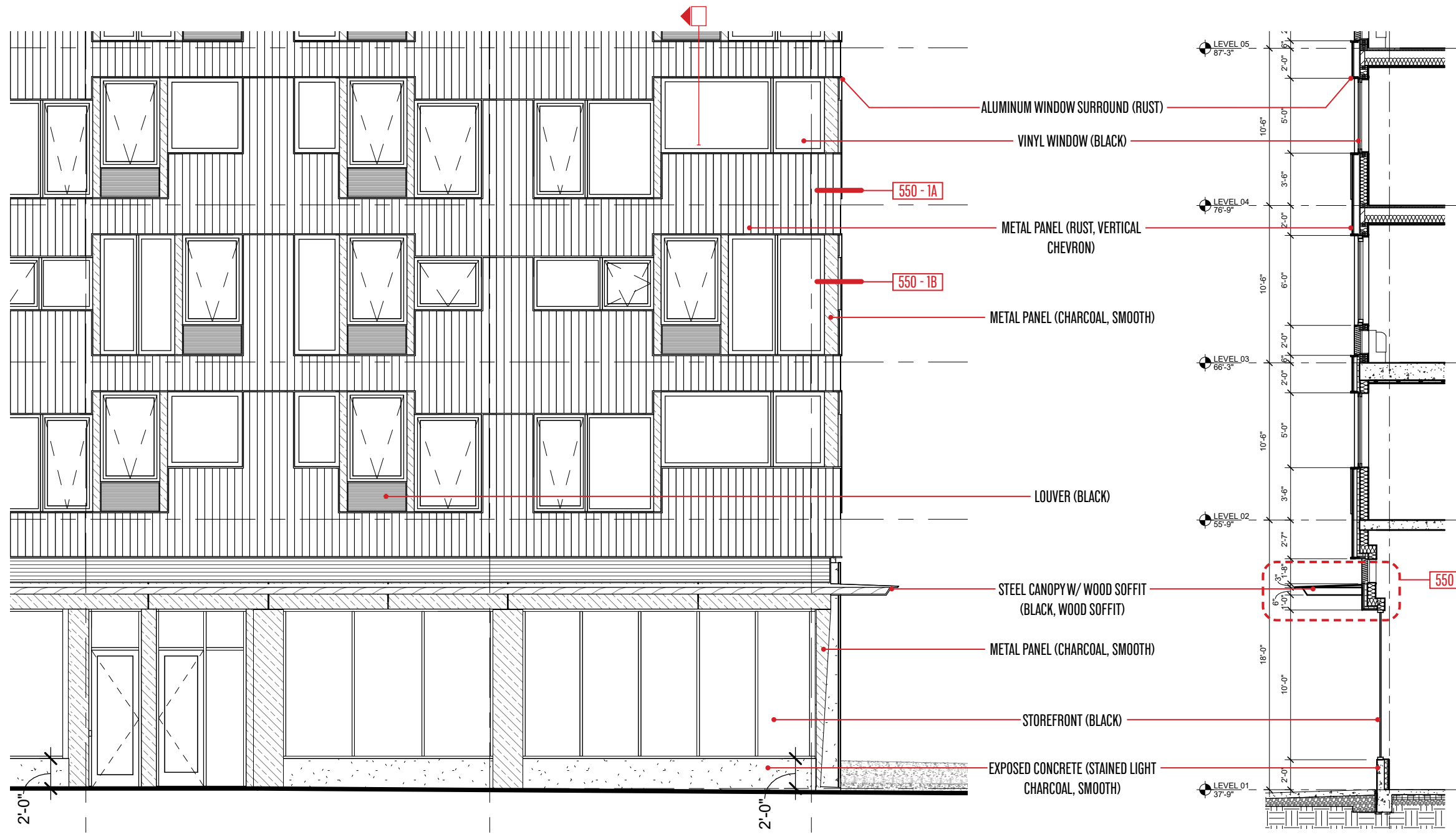
SECTION - WEST



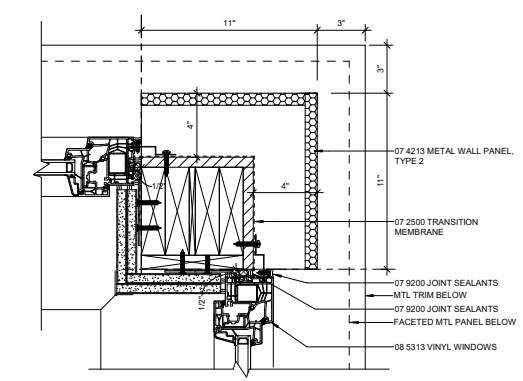


SECTION - NORTH

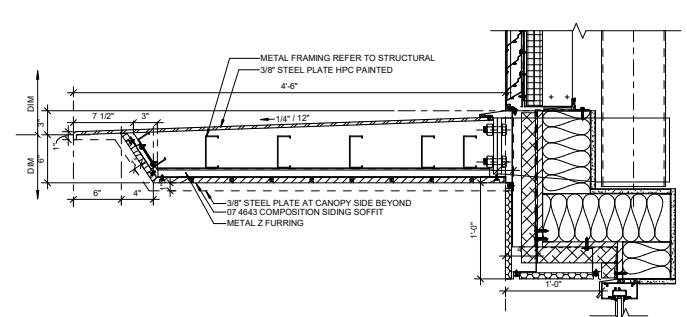
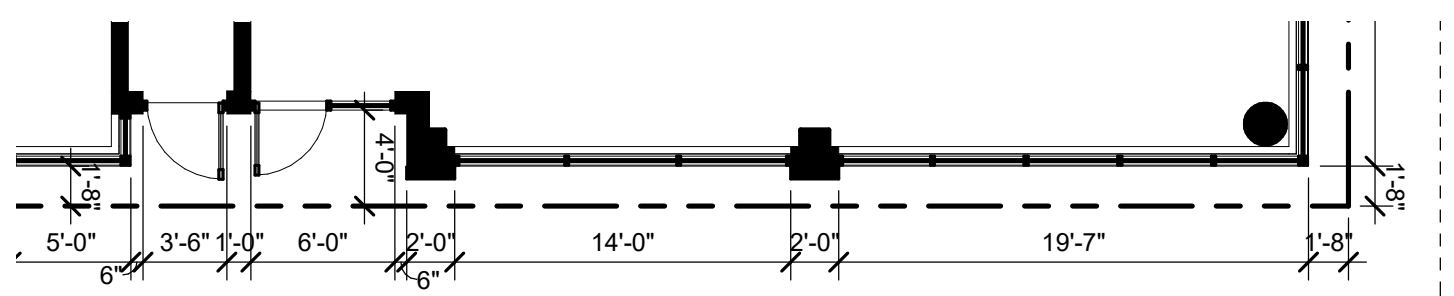




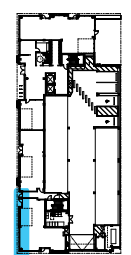
A. TYP. CORNER PLAN DETAIL AT CHEVRON METAL PANEL
1" = 1'-0"



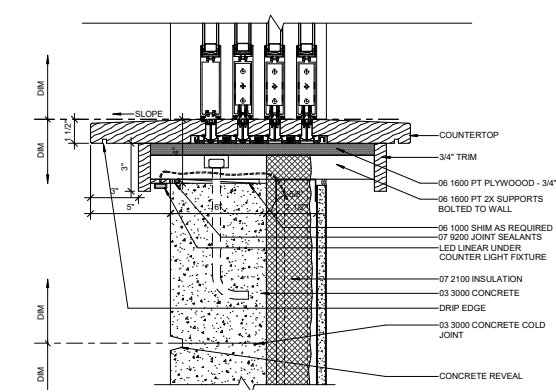
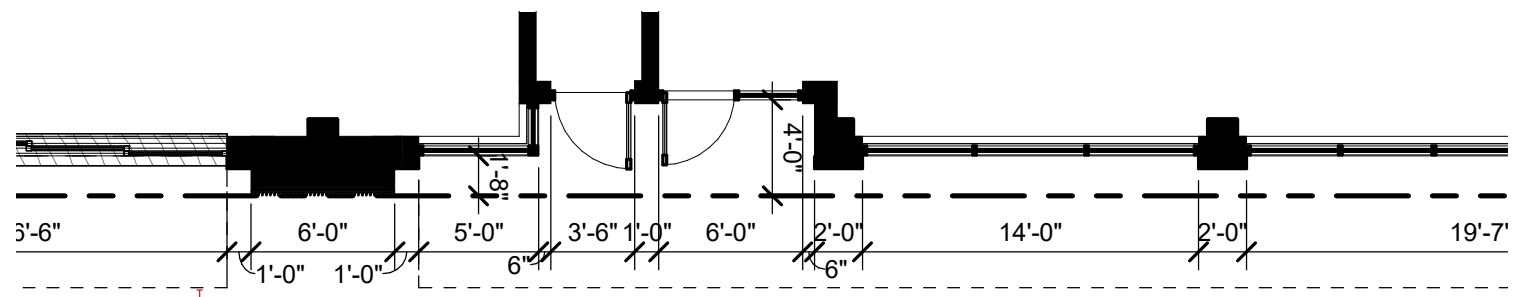
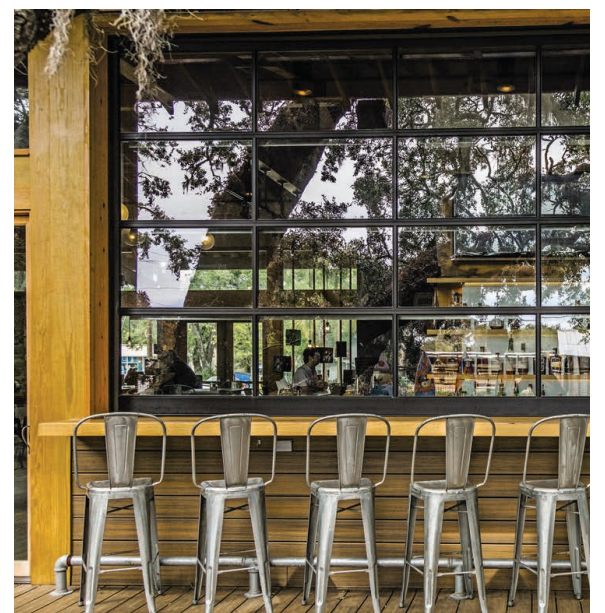
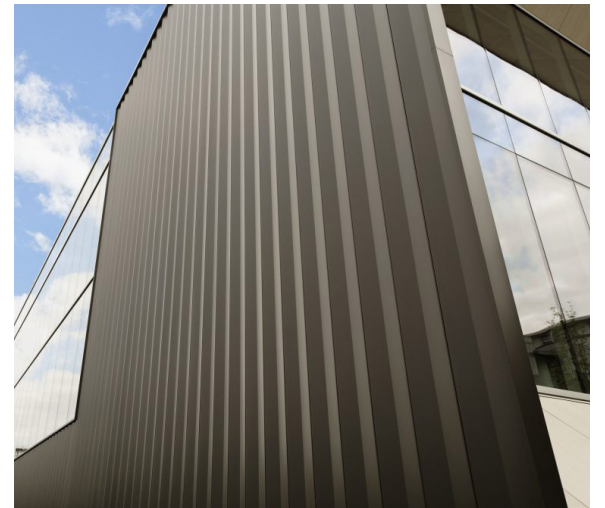
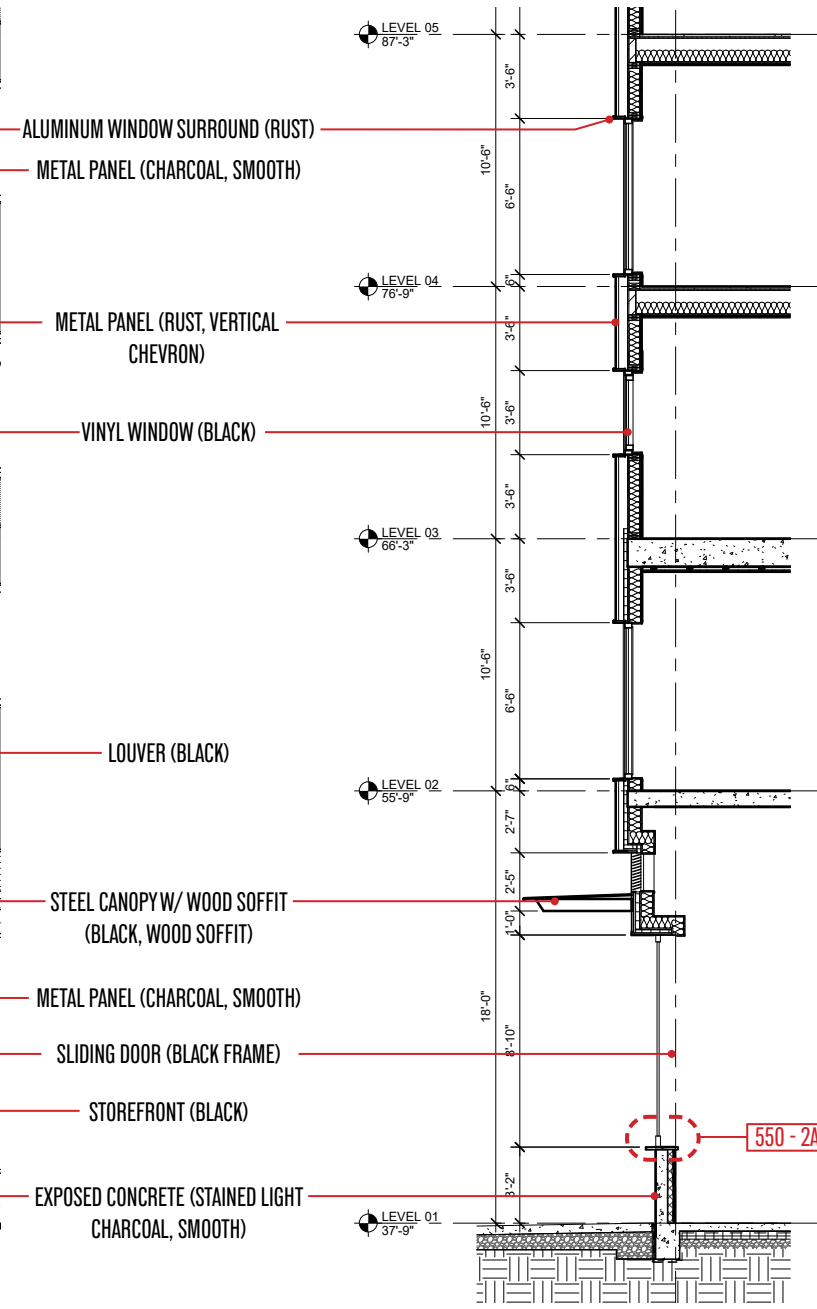
B. TYP. CORNER PLAN DETAIL AT WINDOWS
1" = 1'-0"



C. TYP. CANOPY SECTION DETAIL
1/2\"/>



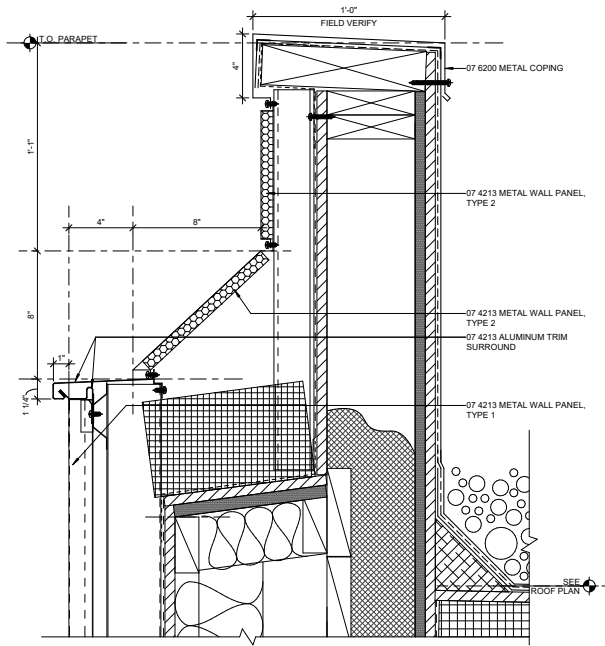
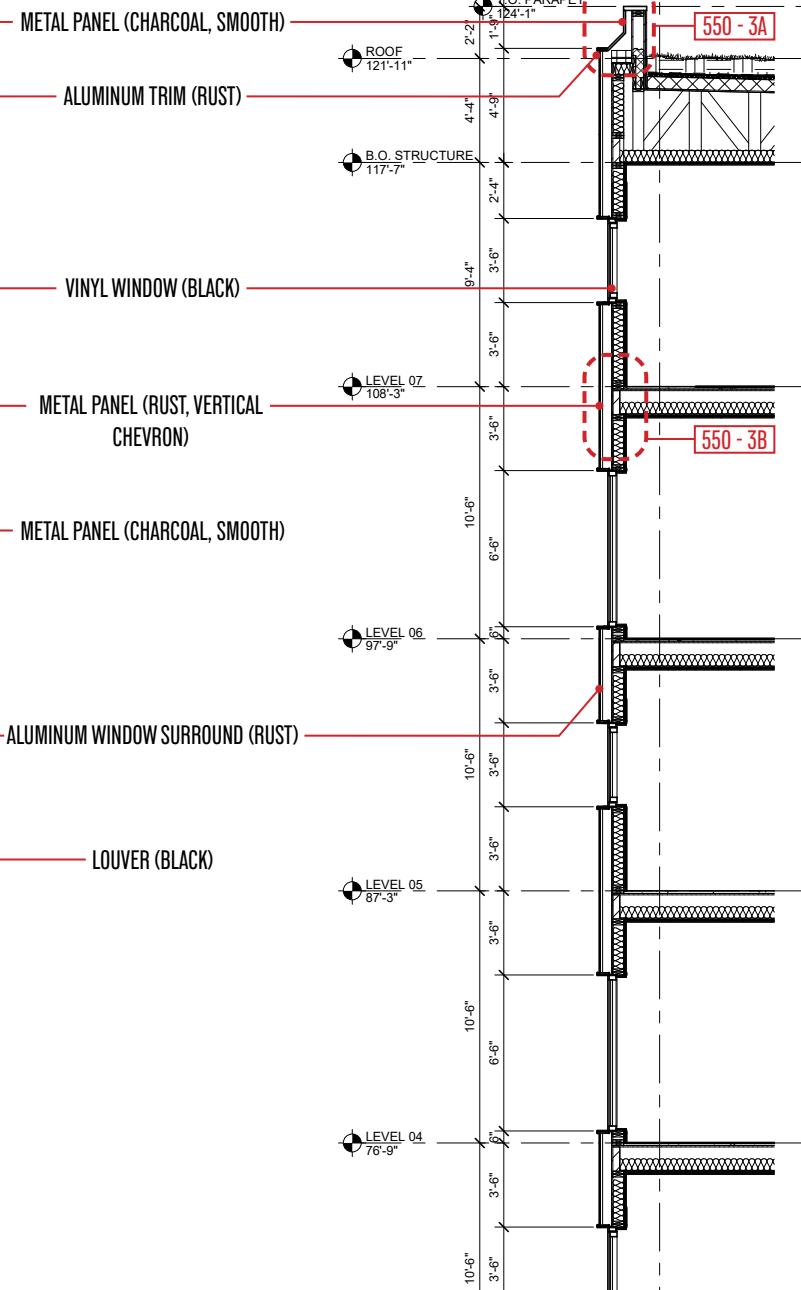
COMPOSITE SHEET - 550:1



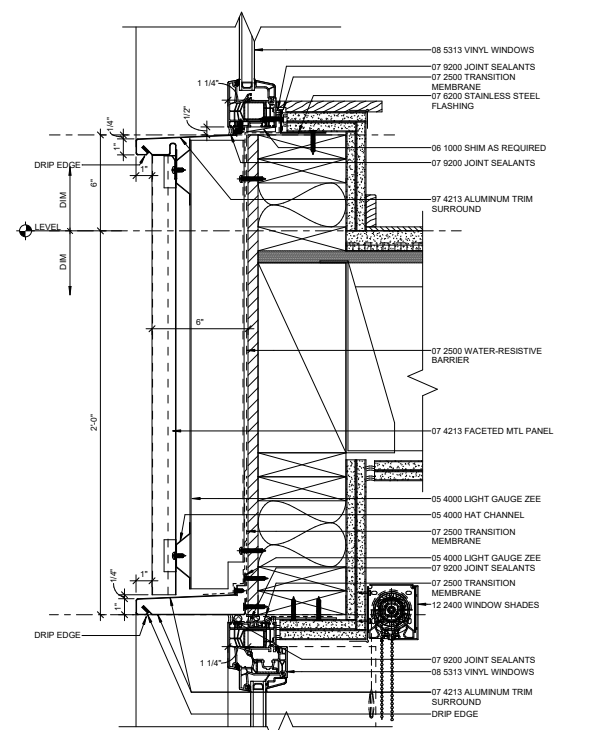
A. TYP. RETAIL GARAGE COUNTER SILL DETAIL

1" = 1'-0"

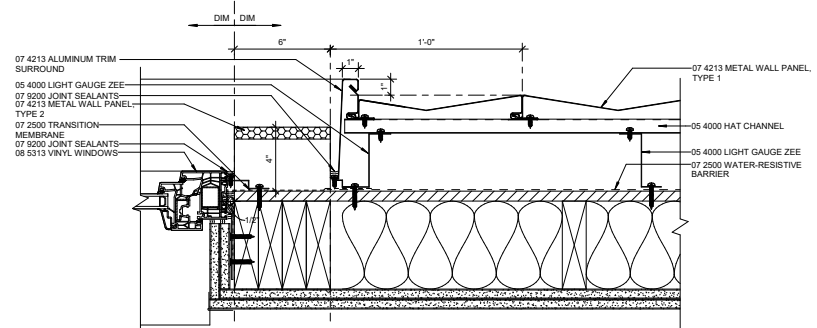
COMPOSITE SHEET - 550:2



A. TYP. PARAPET SECTION DETAIL
1" = 1'-0"



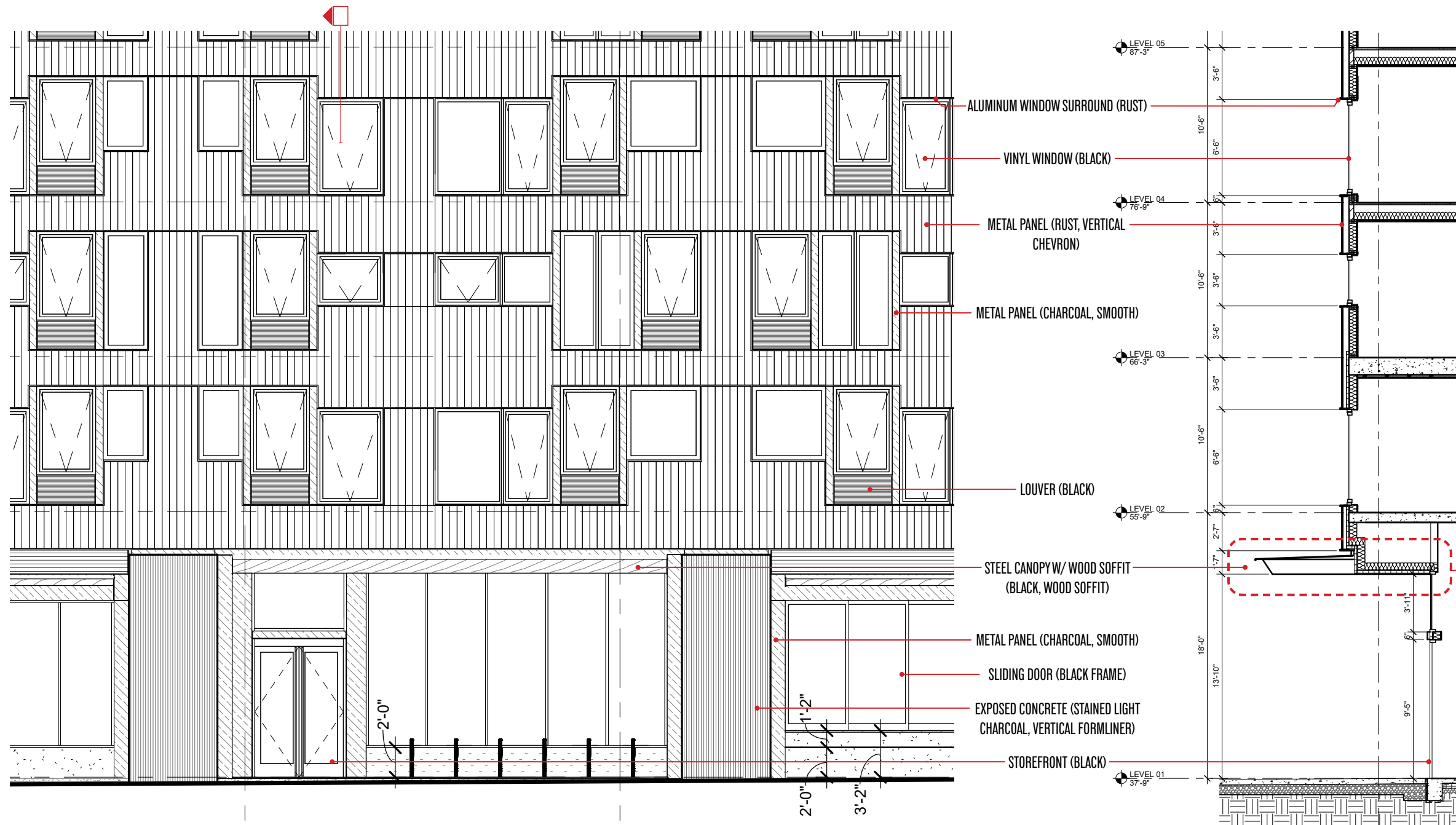
B. TYP. HEAD & SILL DETAIL AT WINDOWS
1" = 1'-0"



C. TYP. CANOPY SECTION DETAIL
1" = 1'-0"



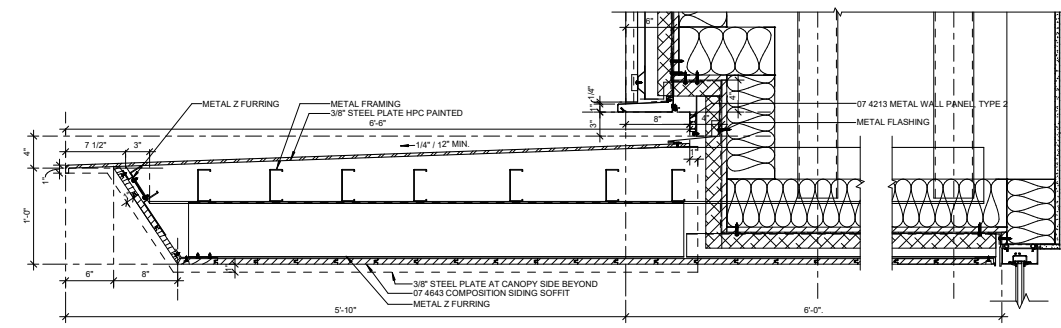
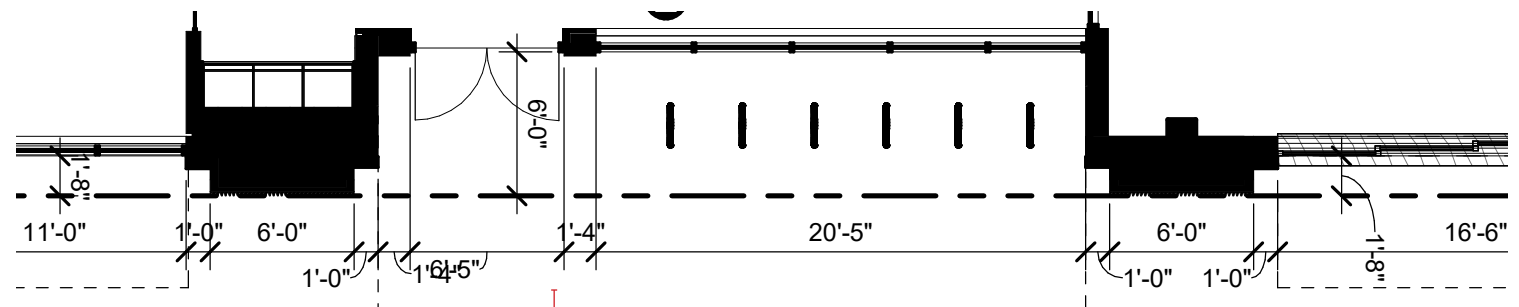
COMPOSITE SHEET - 550:3



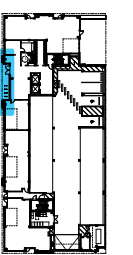
REPRESENTATIVE IMAGE OF SLIDERS AT COUNTERTOP



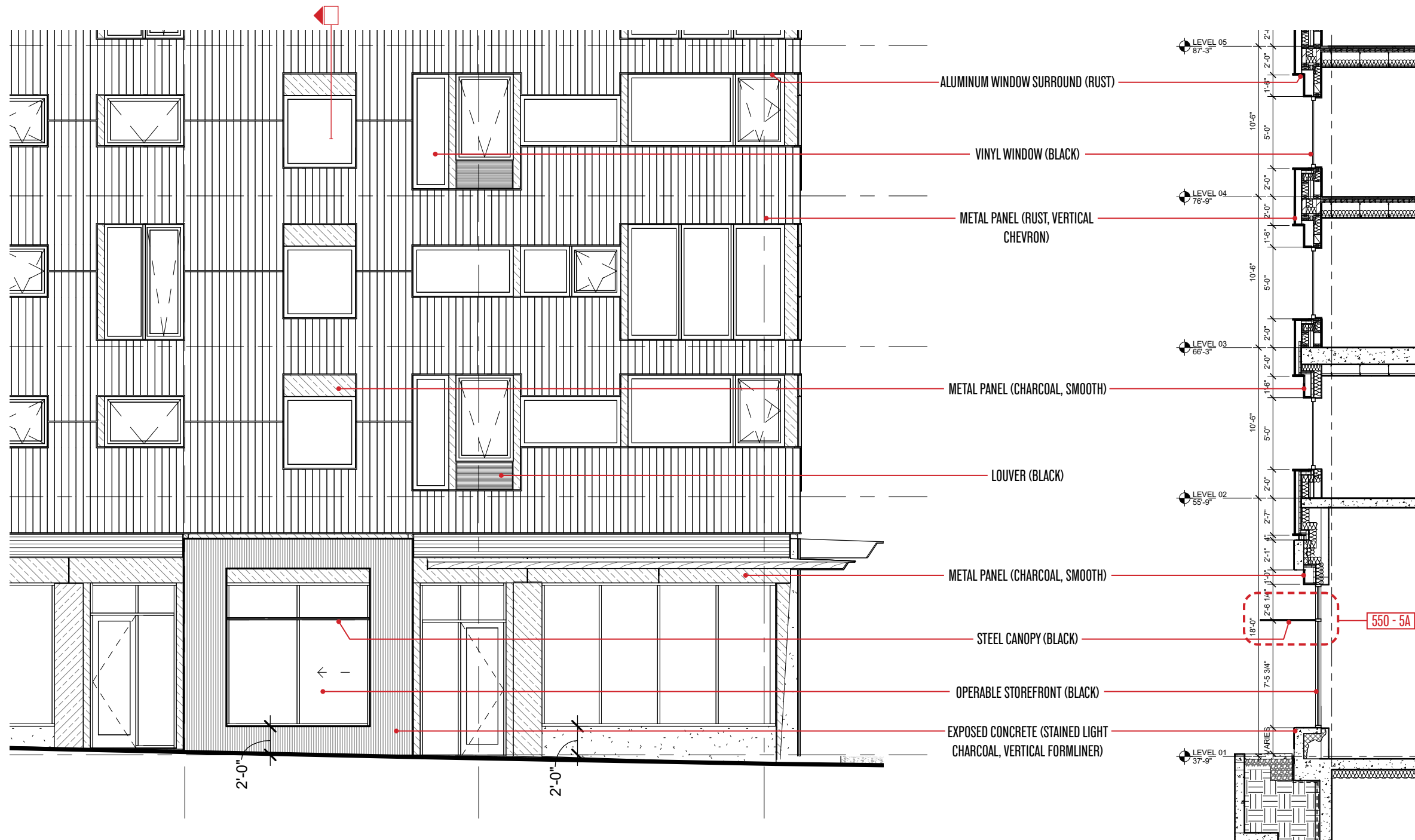
REPRESENTATIVE IMAGE OF TYPICAL STOREFRONT



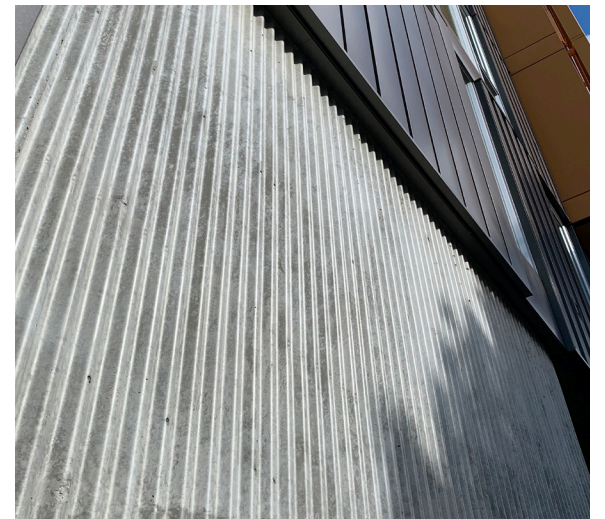
A. RESIDENTIAL ENTRY CANOPY SECTION DETAIL
1/2" = 1'-0"



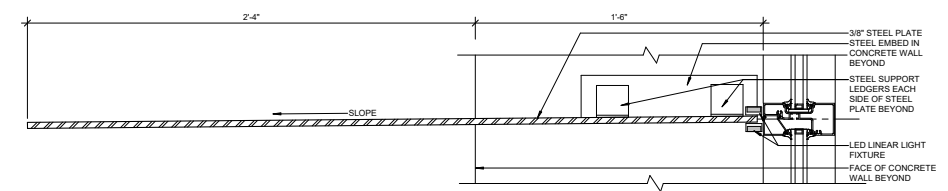
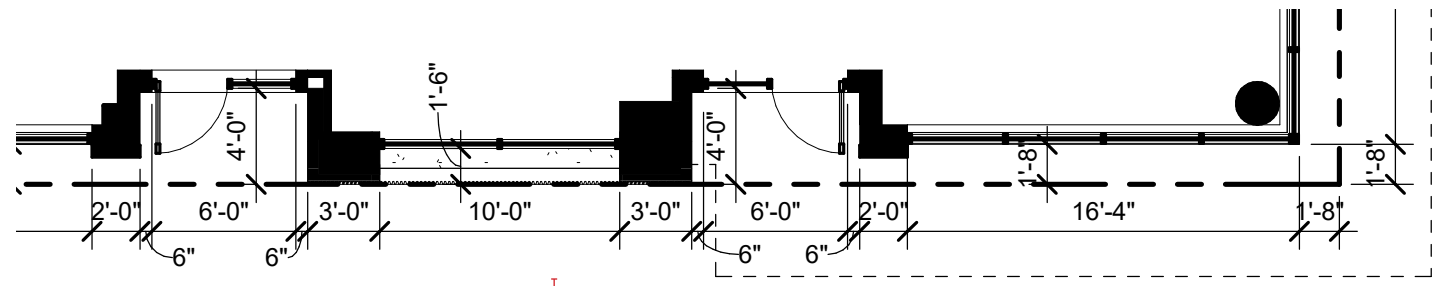
COMPOSITE SHEET - 550:4



REPRESENTATIVE IMAGE OF OPERABLE STOREFRONT AT NORTH RETAIL



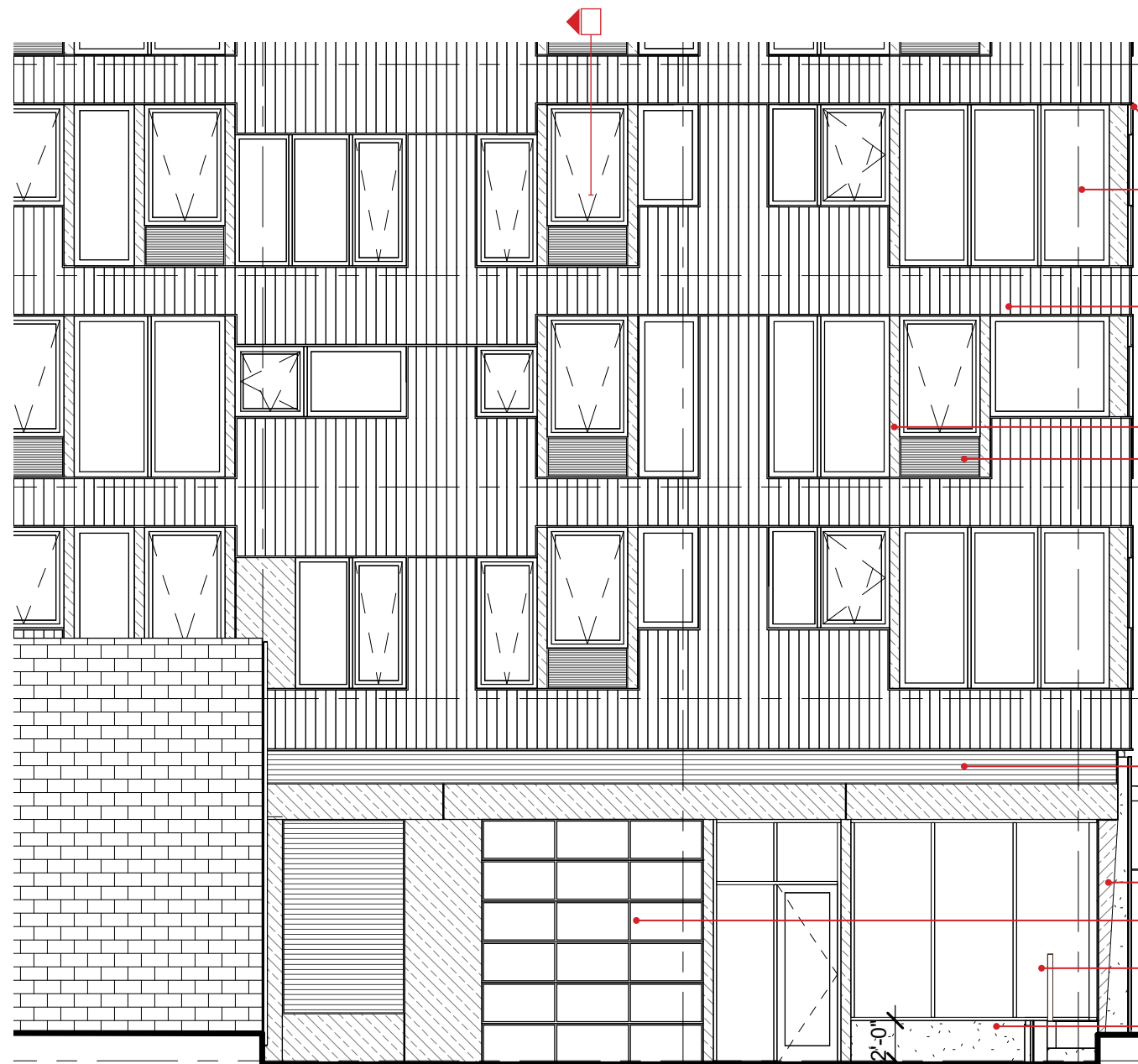
REPRESENTATIVE IMAGE OF EXPOSED STAINED CONCRETE WALL



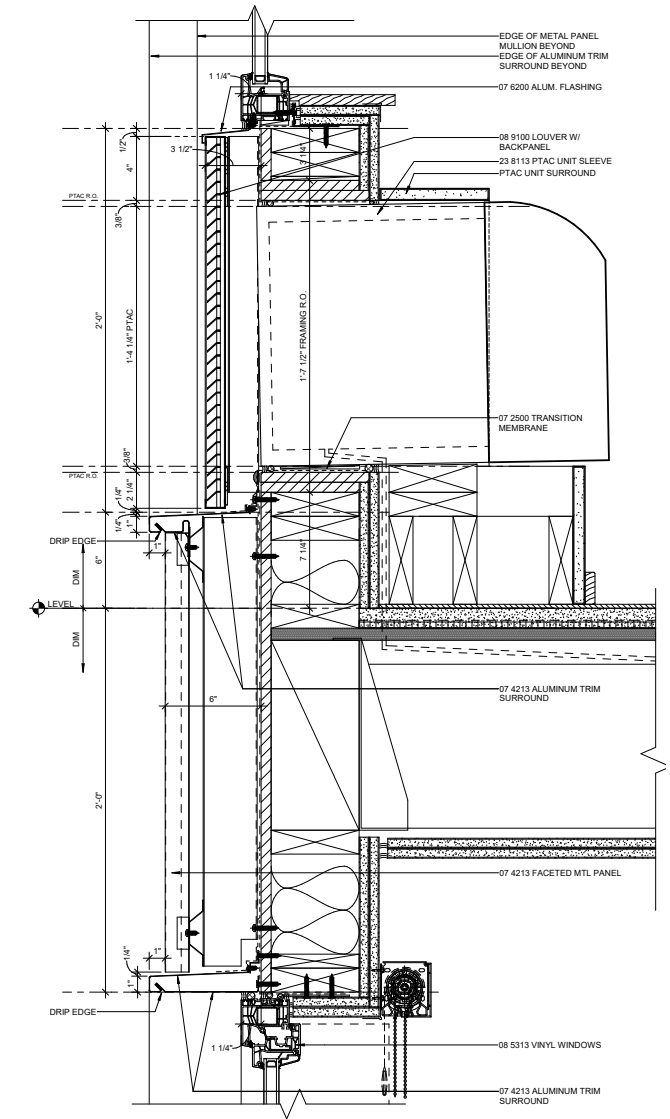
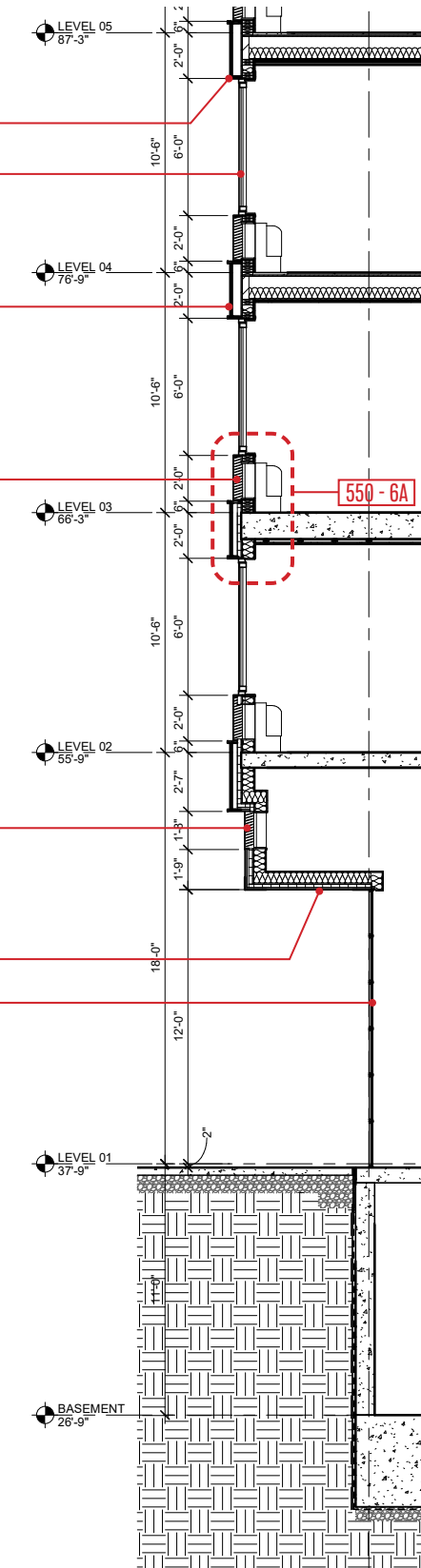
A. RETAIL WALK-UP WINDOW CANOPY

1" = 1'-0"

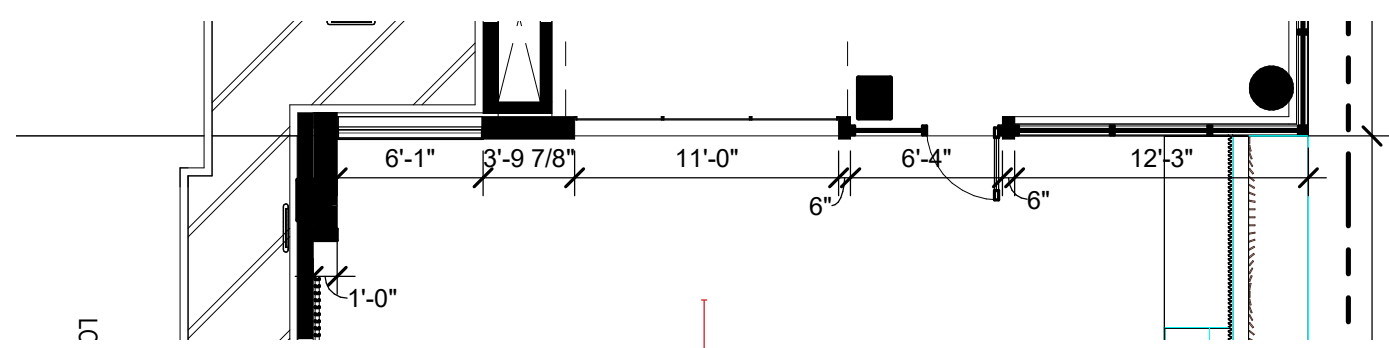
COMPOSITE SHEET - 550:5



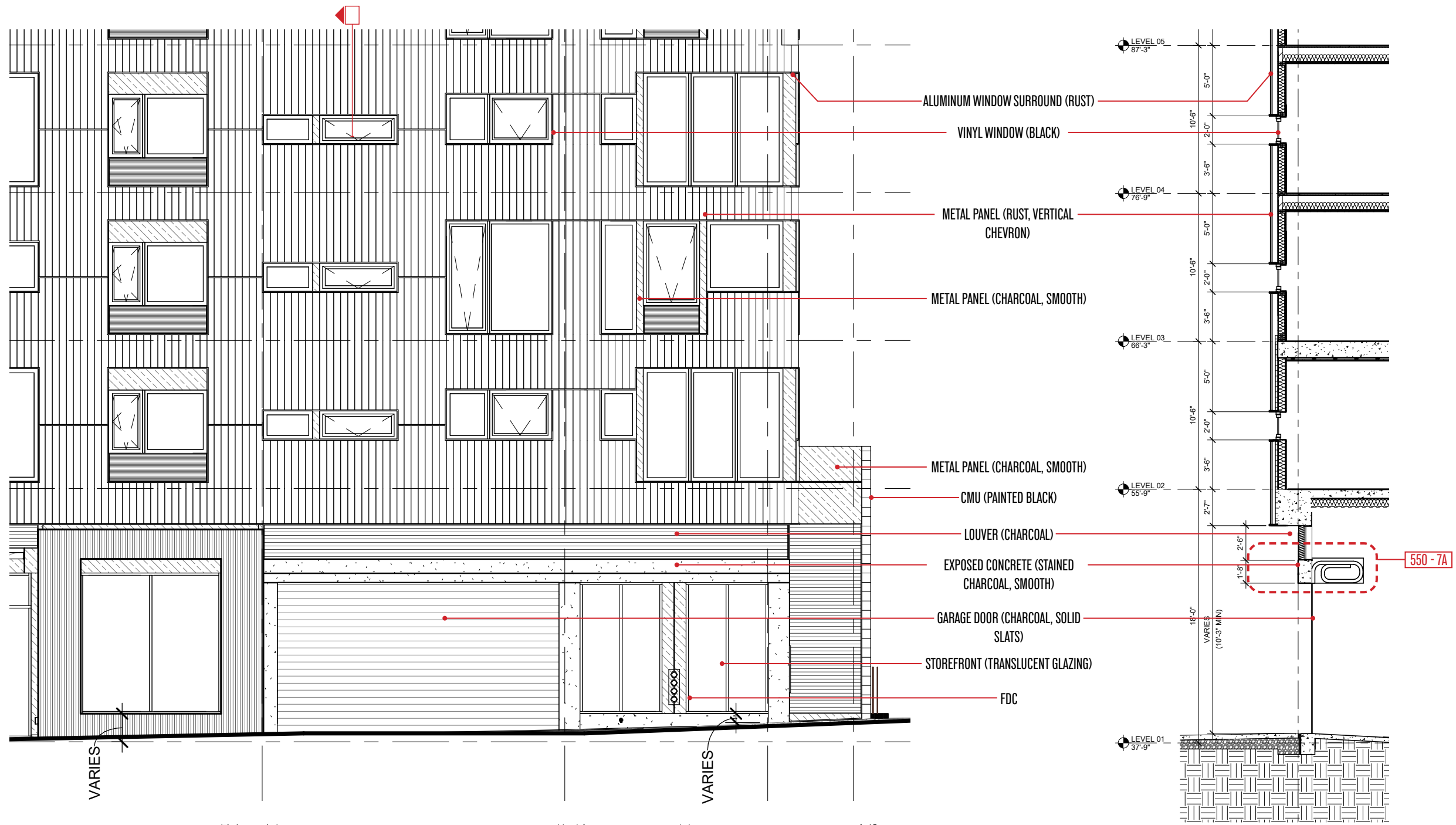
- ALUMINUM WINDOW SURROUND (RUST)
- VINYL WINDOW (BLACK)
- METAL PANEL (RUST, VERTICAL CHEVRON)
- METAL PANEL (CHARCOAL, SMOOTH)
- LOUVER (BLACK)
- LOUVER (CHARCOAL)
- METAL PANEL (CHARCOAL, SMOOTH)
- OVERHEAD DOOR (BLACK FRAME)
- STOREFRONT (BLACK)
- EXPOSED CONCRETE (STAINED LIGHT CHARCOAL, SMOOTH)



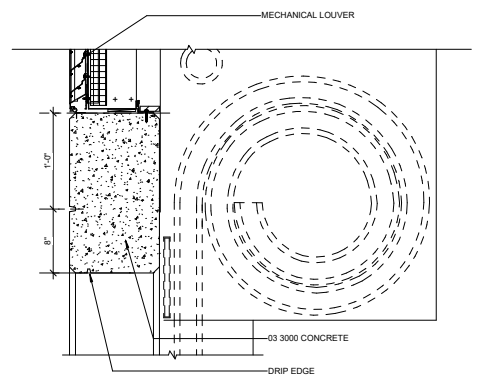
A. TYP. PTAC SECTION DETAIL
1" = 1'-0"



COMPOSITE SHEET - 550:6

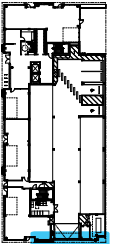
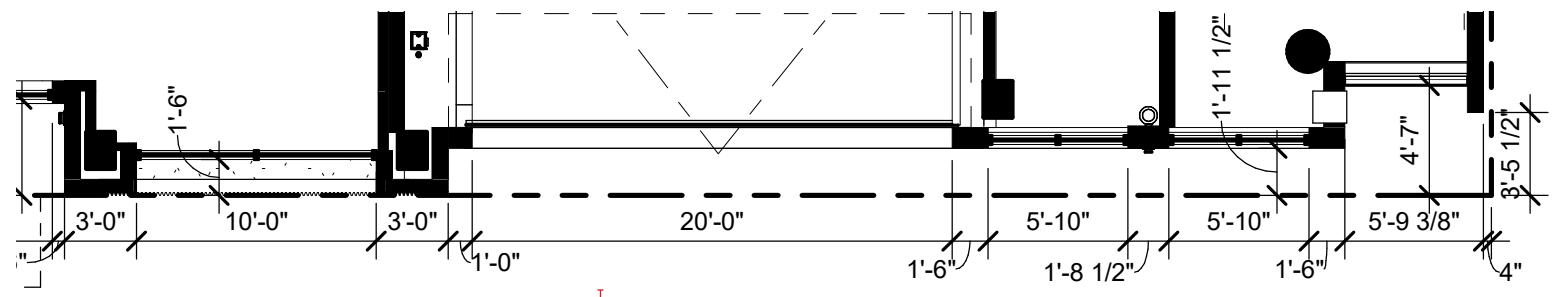


REPRESENTATIVE IMAGE OF GARAGE SOLID DOOR



A. GARAGE DOOR HEAD SECTION DETAIL

1" = 1'-0"



COMPOSITE SHEET - 550:7



METAL PANEL (RUST, VERTICAL CHEVRON)

METAL PANEL (CHARCOAL, SMOOTH)

VINYL WINDOW (BLACK)

INSULATED GLAZING - 12% REFLECTIVITY

ALUMINUM WINDOW SURROUND (RUST)

METAL LOUVER (BLACK)

STEEL CANOPYW/ WOOD SOFFIT
(BLACK, WOOD SOFFIT)

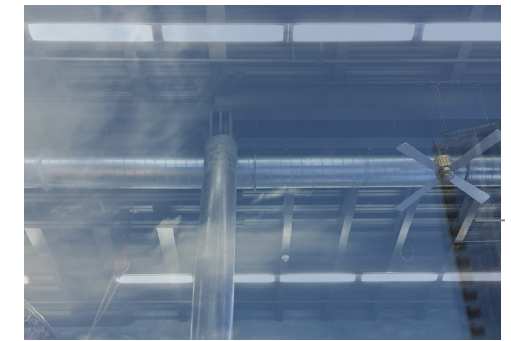
LIGHT CHARCOAL CAST IN PLACE CONCRETE
PILASTER WITH VERTICAL FORMLINER

STOREFRONT (BLACK, MATTE)

LIGHT CHARCOAL CAST IN PLACE CONCRETE
CURB



REPRESENTATIVE IMAGE OF BLACK WINDOW FRAMES AT VINYL
AND STOREFRONT WINDOWS



REPRESENTATIVE IMAGE OF INSULATED GLAZING UNITS
@ 12% REFLECTIVITY



REPRESENTATIVE IMAGE OF CHARCOAL COLOR AT SMOOTH
METAL PANEL (MP-2, ALUMINUM .040 GAUGE)



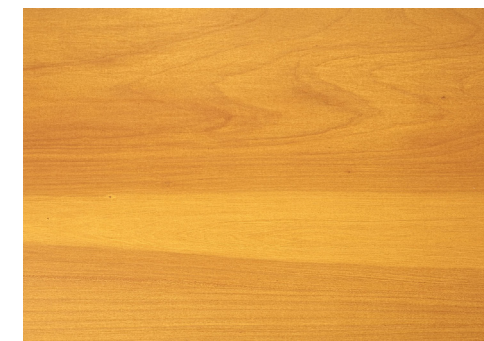
REPRESENTATIVE IMAGE OF BLACK COLOR AT PTAC LOUVERS,
COLOR MATCHES WINDOWS (EXTRUDED ALUMINUM)



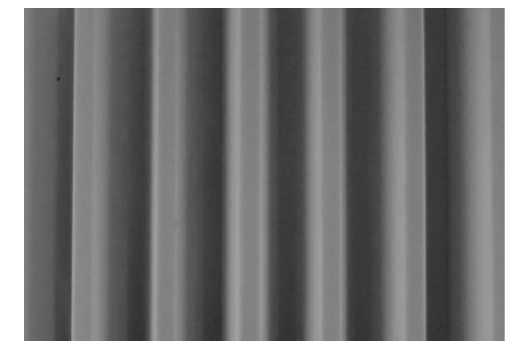
REPRESENTATIVE IMAGE OF LIGHT CHARCOAL STAINED CAST IN
PLACE CONCRETE



REPRESENTATIVE IMAGE OF RUST COLOR AT CHEVRON METAL
PANEL AND ALUMINUM SURROUND (MP-1, ALUMINUM .040)

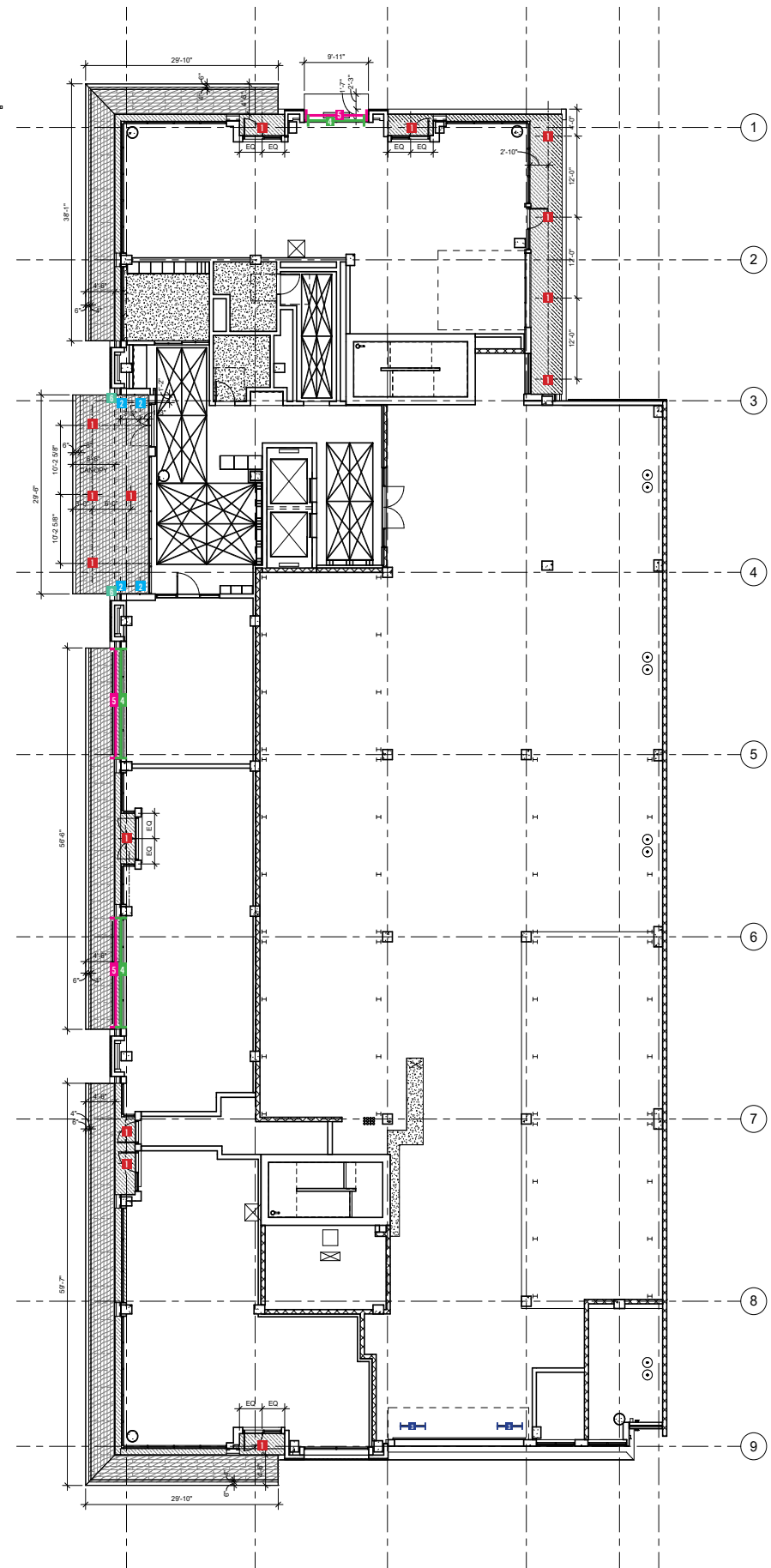


REPRESENTATIVE IMAGE OF CANOPY SOFFIT



REPRESENTATIVE IMAGE OF LIGHT CHARCOAL STAINED CAST IN
PLACE CONCRETE WITH VERTICAL FORMLINER

MATERIAL PALETTE



1 BUILDING ENTRIES
 FINISH: TBD
 TYPE: 3" SQUARE DOWNLIGHT
 MOUNT: RECESSED IN ENTRY SOFFITS



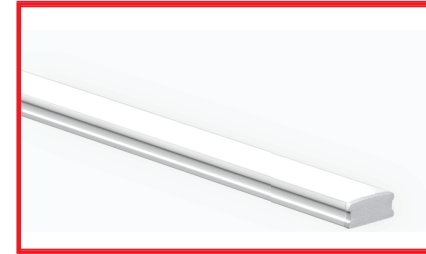
2 MAIN BUILDING ENTRY
 FINISH: TBD
 TYPE: 3" SQUARE WALL WASHER
 MOUNT: RECESSED IN CANOPY



3 PARKING ENTRY LIGHTING
 FINISH: TBD
 TYPE: LINEAR STRIPLIGHT
 MOUNT: SURFACE



4 OVER BAR LIGHTING
 FINISH: TBD
 TYPE: OUTDOOR LINEAR LIGHT
 MOUNT: ABOVE BARS

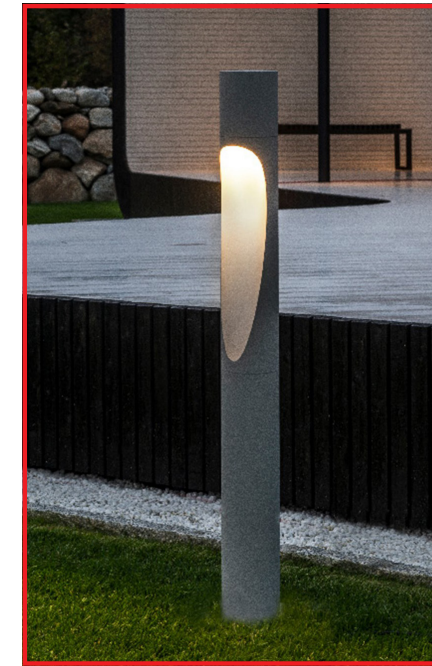
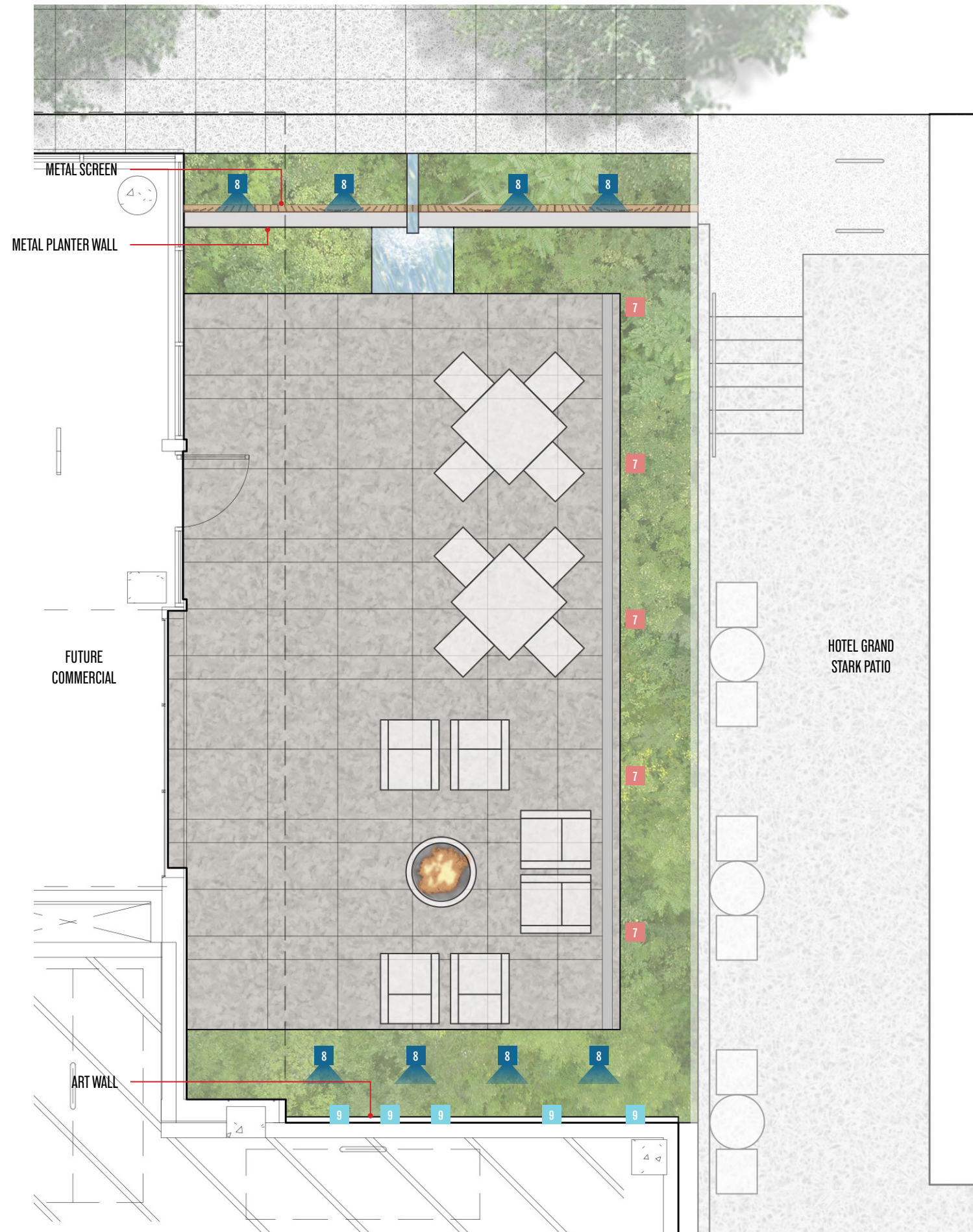


5 UNDER BAR LIGHTING
 FINISH: TBD
 TYPE: OUTDOOR LINEAR LIGHT
 MOUNT: UNDER BARS



6 MAIN CANOPY UPLIGHT
 FINISH: TBD
 TYPE: INGRADE UPLIGHT
 MOUNT: RECESSED

EXTERIOR LIGHTING PLAN - GROUND FLOOR



7 COURTYARD BOLLARD
 FINISH: TBD
 TYPE: 2" DIA X 27" TALL BOLLARD
 MOUNT: INGRADE PLANTERS



8 COURTYARD UPLIGHT
 FINISH: TBD
 TYPE: 3" X 12" ASYMMETRIC LOUVER BEAM LIGHT
 MOUNT: PLANTER STAKE MOUNTING



9 ART WALL LINEAR LIGHT
 FINISH: TBD
 TYPE: 3/4" W X 1/4" H CHANNEL LINEAR LIGHT
 MOUNT: SURFACE

EXTERIOR LIGHTING PLAN - COURTYARD



PRODUCTS - CUT SHEETS

1. Window Systems
2. Cladding
3. Louvers
4. Overhead Doors

UNIVERSAL SERIES™

TECHNICAL DATA

The Universal Series™ offers a patented, high-performance fiberglass solution for window walls, windows and doors, and storefront glazing.

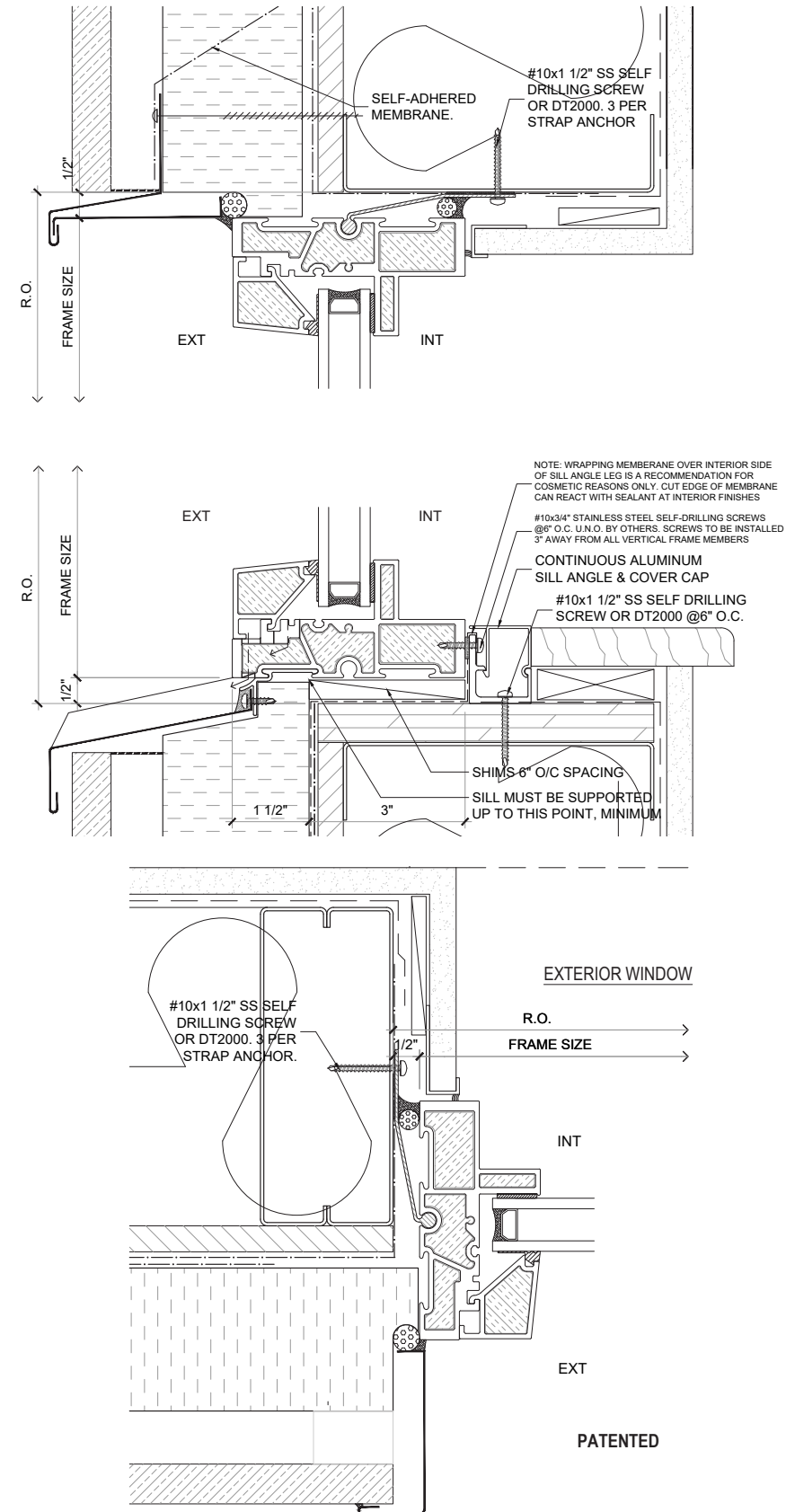
Designed and manufactured in North America, the Universal Series™ features an innovative, commercial-grade fiberglass frame boasting 150% improved thermal performance compared to traditional aluminum windows.

Custom configured and built-to-suit project requirements—and available in virtually any color—the Universal Series™ allows developers and architects to dramatically improve the overall thermal performance of buildings, without sacrificing glazing area.

- Custom sizes & configurations
- AW Performance Class designation (casements, awnings, fixed windows)
- Low-VOC standard & custom colors meet AAMA 625 performance criteria
- Double (one Low-E) & Triple (two Low-E)
- LBC Red List Free and Energy-Star rated

CASCADIAWINDOWS.COM

01 - Typical Ground Floor Storefront System - product



02 - Typical Ground Floor Storefront System



CUT SHEETS: GLAZING SYSTEMS

SLIDING GLASS DOOR SYSTEMS



Effortlessly open up your space to the outdoors.

Sliding glass door systems expand the view of any living space and can be used as external entryways or transitions between two interior spaces. Motorization options, pocketing possibilities, countless custom configurations, and expansive panel sizes make our sliding glass doors a flexible design element that complements any space. Where engineering allows, a pocket system can be added so the doors are completely hidden from view while open, creating an unobstructed view. Solar Innovations® also recommends the addition of a screen system for residential applications; both pet and insect screens are available to meet the individual needs of a specific project.

FEATURES

PANELS

- Motorized panels and screens possible with wireless remote, keypad, motion sensor, or infrared sensor controls
- LEED friendly system including recycled content
- Designed and manufactured in the U.S.A.

PERFORMANCE:

- Weather tight jamb interlock provides outstanding air and water performance
- Non-thermal frame available if desired

GLAZING:

- Designed to accommodate almost any glazing infill including panels, glass, acrylic, and polycarbonate

HARDWARE

- Custom manufactured operable hardware
- Multiple hardware styles and finishes
- Multiple sill designs, including high performance sill
- Stainless steel rollers with precision bearings
 - 3" rollers for minimum panel width of 30"
 - 1 13/16" rollers for minimum panel width of 20"
 - Smaller panels may be available upon engineering approval

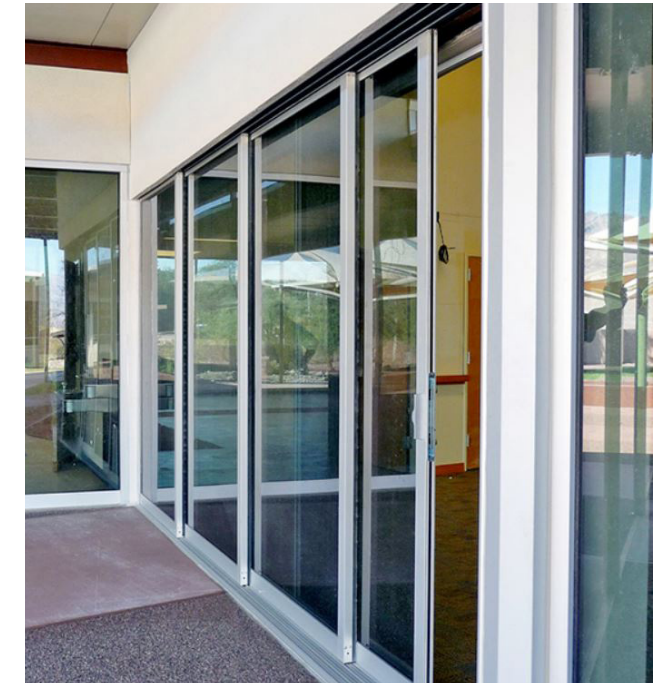
OPTIONS

FINISHES:

- Standard finishes
 - AAMA 2603: Bronze, White
 - AAMA 611 Class I Anodized: Clear, Dark Bronze
- Designer finishes
 - AAMA 2603: Hartford Green, Black, Natural Clay, Sandstone
- Custom finishes
 - Powder coat finish: AAMA 2604 - 2605
 - Fluoropolymer (50% or 70%): AAMA 2604 - 2605
 - Wood veneer, metal cladding, and foiling options
- Dual color or dual finish options

ACCESSORIES:

- Matching fixed transoms & sidelites
- Screen options: folding, sliding, retractable
- Mullions, decorative muntins, simulated divided lites (SDLs), interior & exterior grids
- No post 90° corners possible
- Pocketing options: single or double sided
- Factory installed sill drain tubes, if required

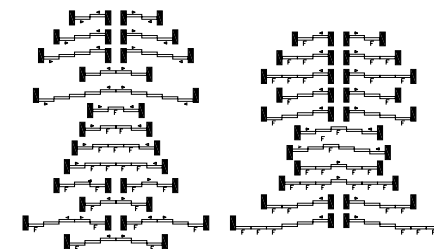


CONFIGURATIONS

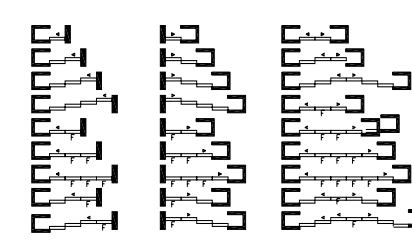
Additional configurations are available.



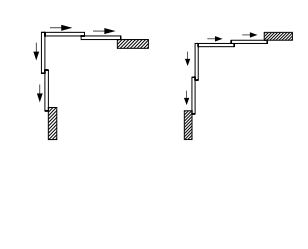
Dual Track



Multi-Track



Multi-Track Pockets



No Post Corner

02 - Examples and configurations

CUT SHEETS: SLIDING DOORS AT RETAIL

BOX RIB 1

PRECISION SERIES WALL PANELS

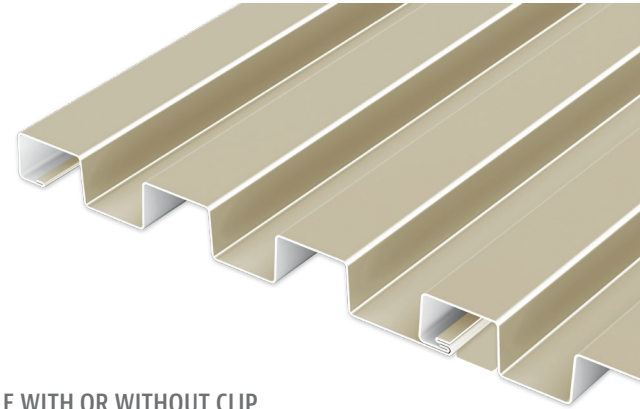
MATERIALS

- .032 aluminum 24 gauge steel
- .040 aluminum 22 gauge steel
- .050 aluminum

SPECS

- 12.853" Wide 1-3/8" High

Note: Minimum panel length is 4'



AVAILABLE WITH OR WITHOUT CLIP



PRODUCT FEATURES

- ▶ No-clip panel, or clip installation for expansion/contraction
- ▶ Panel depth 1-3/8" nominal
- ▶ Panel width of 12.853" nominal
- ▶ Cost-effective installation
- ▶ Horizontal or vertical orientation
- ▶ Panel length: 30' maximum for steel

- ▶ Panel length: 22' maximum for aluminum on the thru-fastened leg (no clip), longer lengths available on clip panels

MATERIALS

- ▶ 43 stocked colors (24 gauge steel)
- ▶ 16 stocked colors (22 gauge steel)
- ▶ 36 stocked colors (.032 aluminum)

- ▶ 22 stocked colors (.040 aluminum)
- ▶ 29 stocked colors (.050 aluminum)
- ▶ Galvalume Plus available

TESTS

- ▶ ASTM E 283
- ▶ ASTM E 331
- ▶ ASTM E 330
- ▶ ASTM E 1592

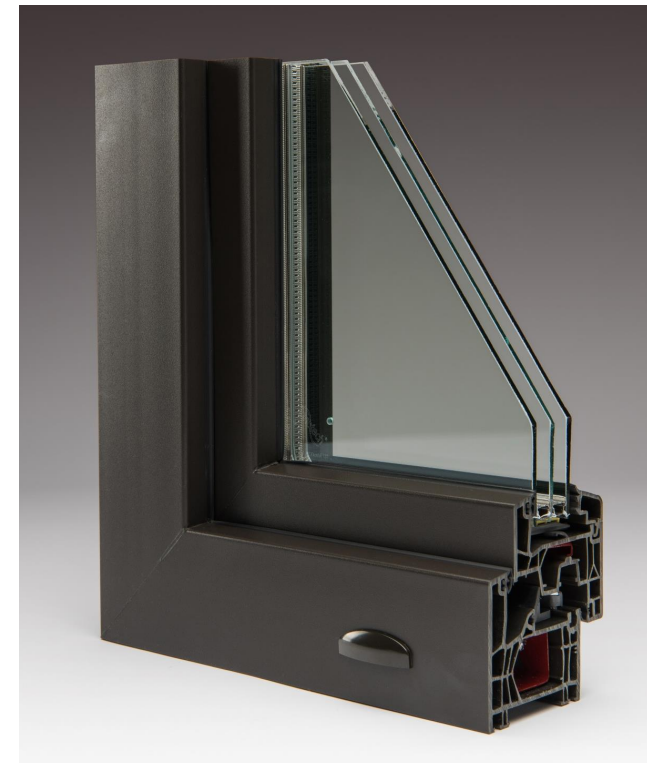
Note: Line drawings may not be to scale.



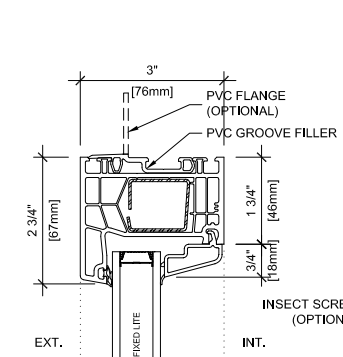
800 PAC CLAD | PAC-CLAD.COM

©2020 Petersen Aluminum

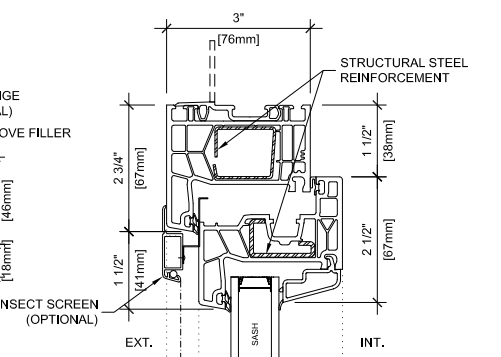
01 - Penthouse Cladding and Screen Wall



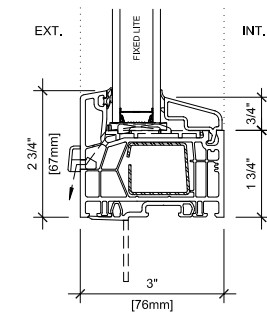
1. HEAD/JAMB AT FIXED



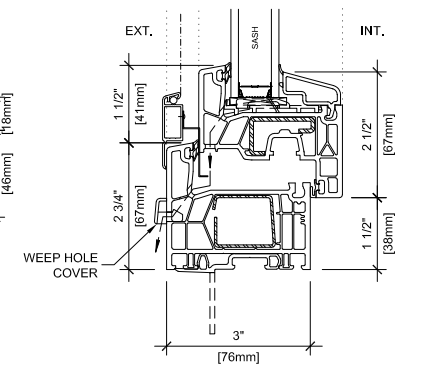
3. HEAD/JAMB AT SASH



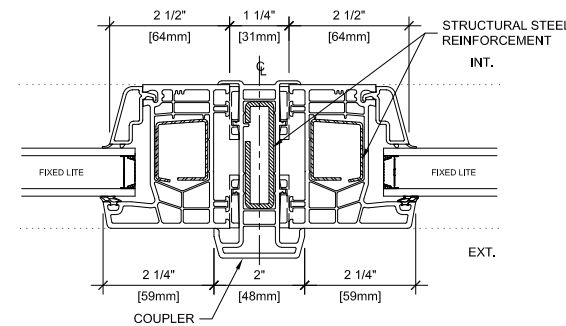
2. SILL AT FIXED



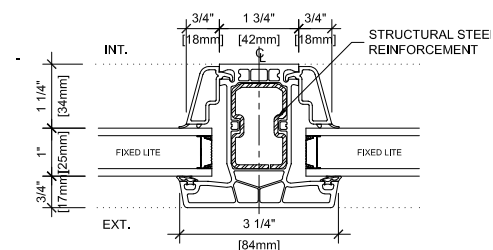
4. SILL AT SASH



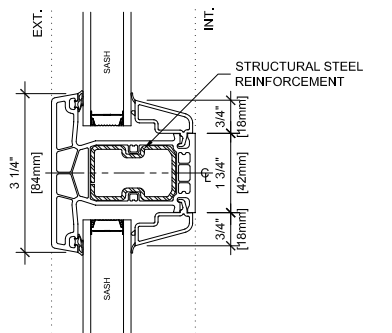
8. H-COUPLER AT FIXED/FIXED



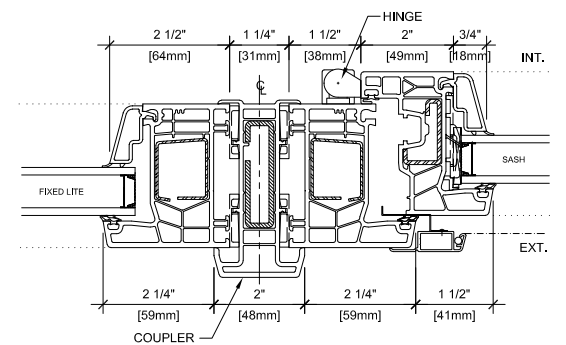
5. T-MULLION AT FIXED



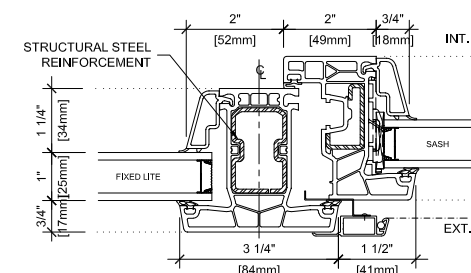
10. HORIZONTAL SASH BAR



9. H-COUPLER AT FIXED/SASH



6. T-MULLION AT SASH



02 - Typical Residential Windows

CUT SHEETS: CLADDING & WINDOWS

27452 52 AVENUE, LANGLEY, B.C. V4W 4B2 PHONE 604 854 1111
innotech-windows.com

PRODUCT SERIES:
DEFENDER 76DS SYSTEM

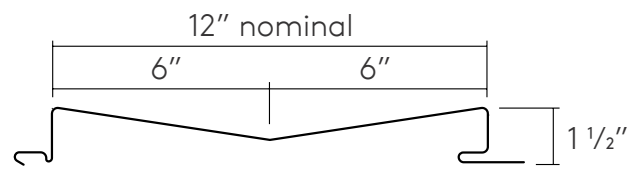


REPRESENTATIVE IMAGE OF VERTICAL CHEVRON METAL PANEL



Chevron

W-12



Morin[®]

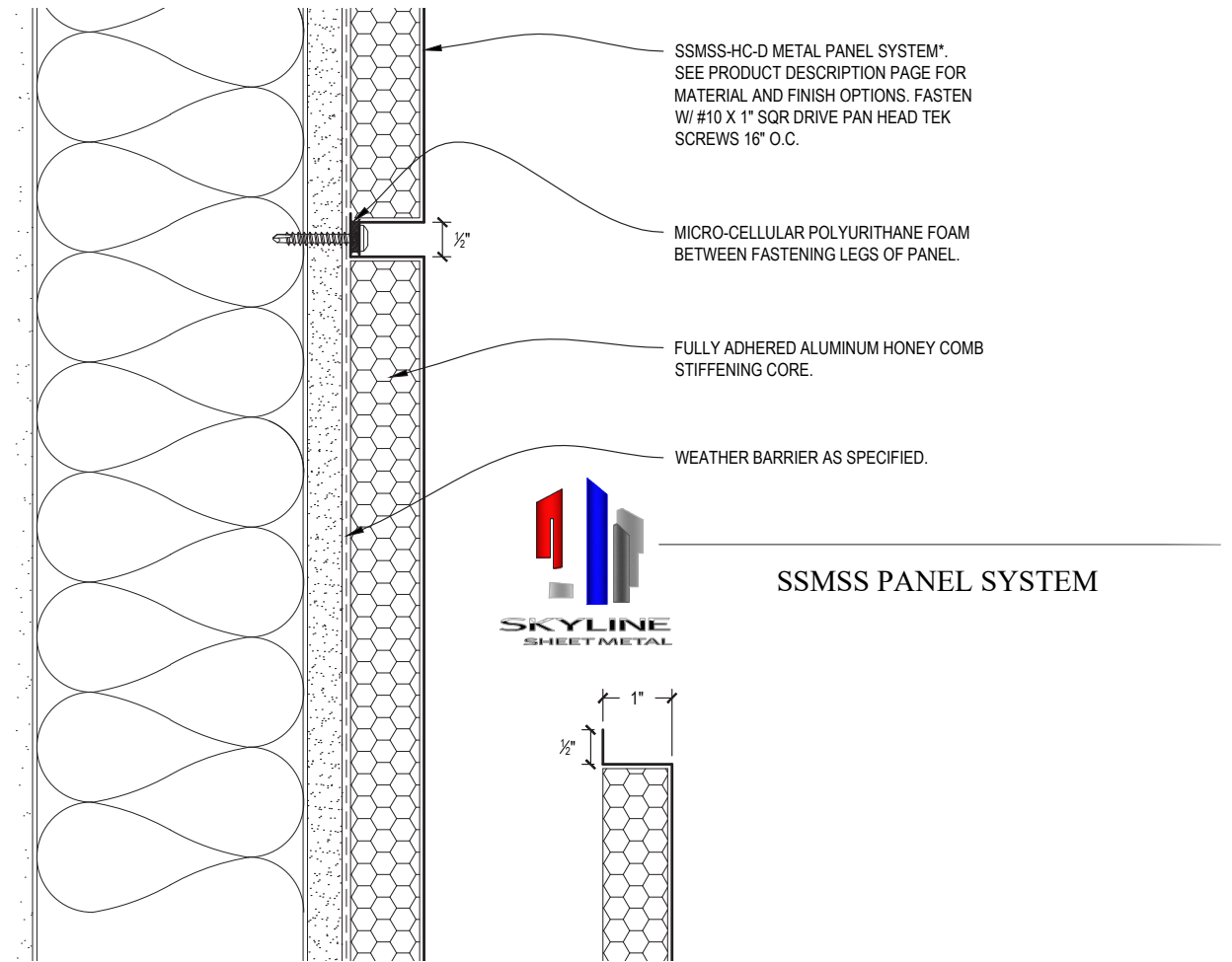
A Kingspan Group Company

CHEVRON METAL PANEL PROFILE

01 - Chevron Metal Panel

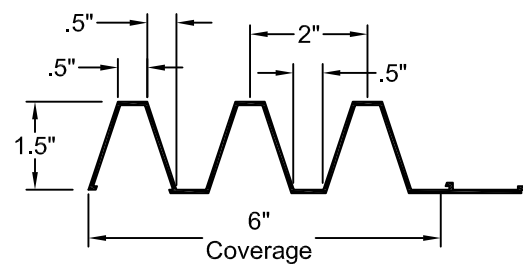
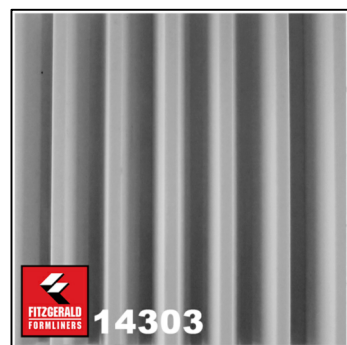
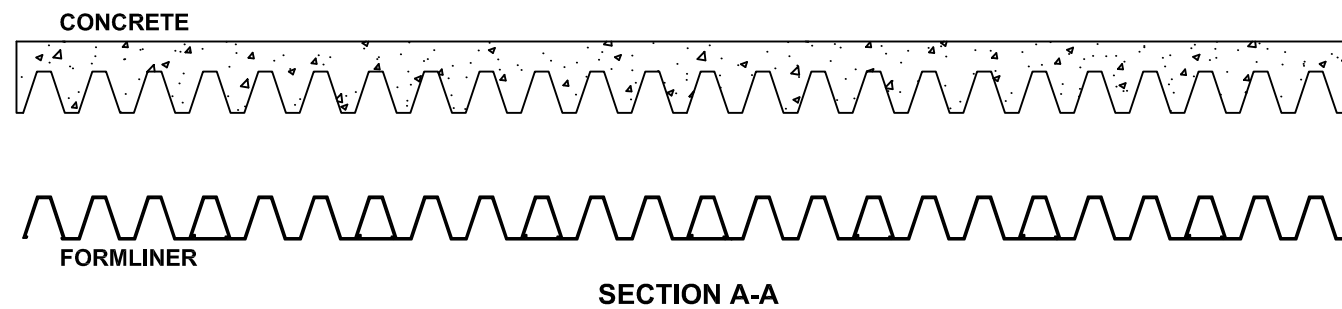
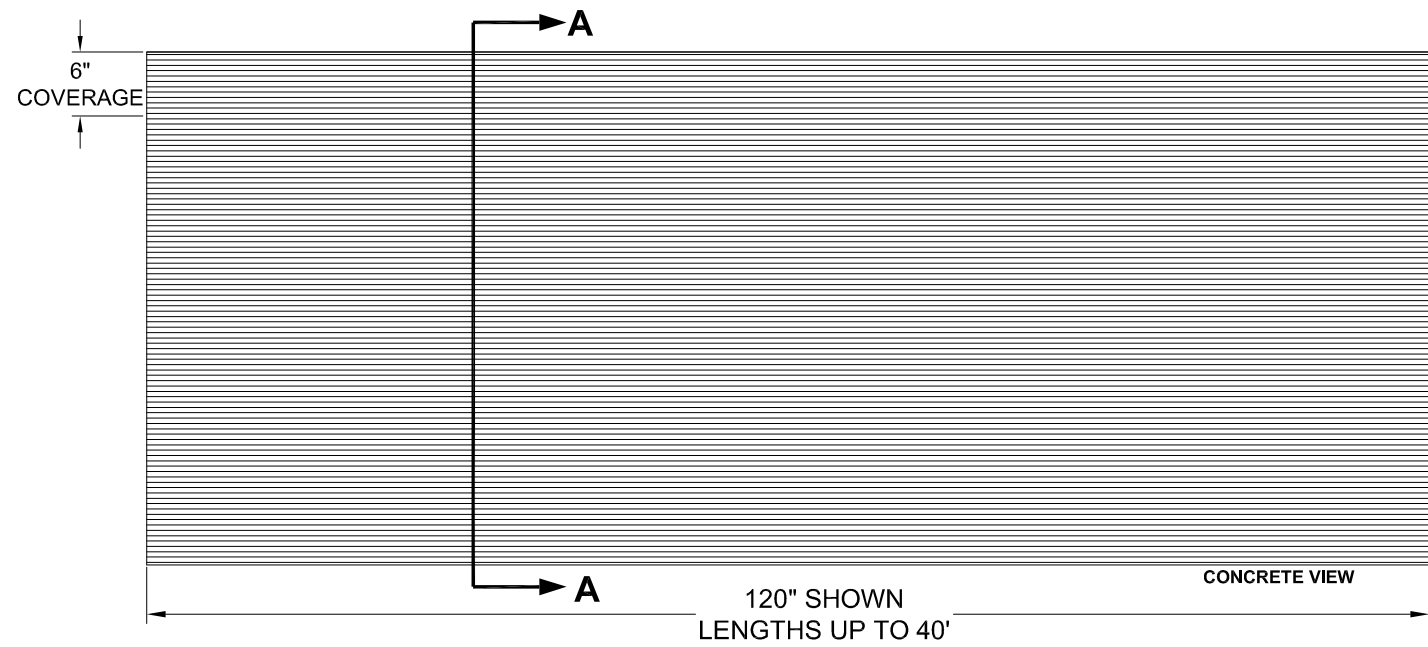


REPRESENTATIVE IMAGE OF SMOOTH METAL PANEL



02 - Smooth Metal Panel

CUT SHEETS: CLADDING



FORMLINER DETAIL



PATTERN 14303
Fluted Rib

1.5" Depth, 2" On Center

VinyLok®
Styrene - Single Use,
ABS Plastic - Up to 10 reuses.

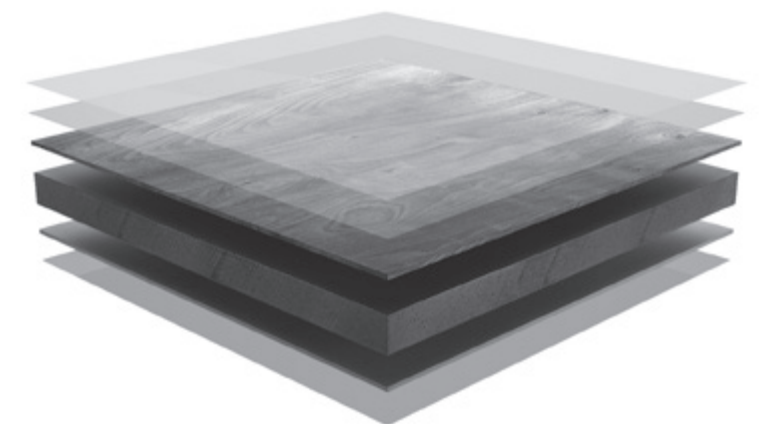
Forming The Future™

Fluted Rib
Part Size: 6" coverage, lengths up to 40'
Max Depth: 1.5"
On Center: 2.0"
Peak: 0.5"
Valley: 0.5"
Draft: 0.5"

01 - Vertical Concrete Formliner



REPRESENTATIVE IMAGE OF CANOPY SOFFIT MATERIAL



CANOPY SOFFIT MATERIAL CROSS SECTION

02 - Canopy Soffit



- Real wood with no restaining, resealing, repainting.
- Resistant against mold and insect infestation.
- Protection against the elements: Permeability, solar and acoustic protection.
- Color stability against UV-ray damage.
- Easily adaptable to any kind of architectural requirement.



- A** PVDF Antigraffiti overlay
- B** Everlook®
- C** Natural timber veneer
- D** HPL core
- E** Natural timber veneer
- F** Balancing film

CUT SHEETS: CLADDING

Stationary Louver J Blade

Application and Design

ESJ-202 is a weather louver designed to protect air intake and exhaust openings in building exterior walls. Design incorporates J style blades, sloped sill and high free area to provide maximum resistance to rain and weather while providing minimum resistance to airflow. The ESJ-202 is an extremely efficient louver with **AMCA LICENSED PERFORMANCE DATA** enabling designers to select and apply with confidence.

Standard Construction

Frame Heavy gauge extruded 6063-T5 aluminum, 2 in. x 0.063 in. nominal wall thickness

Blades J style, heavy gauge extruded 6063-T5 aluminum, 0.063 in. nominal wall thickness, positioned at 45° angles on approximately 3 in. centers

Construction . . . Mechanically fastened

Birdscreen 3/4 in. x 0.051 in. flattened expanded aluminum in removable frame, inside mount (rear)

Finish Mill

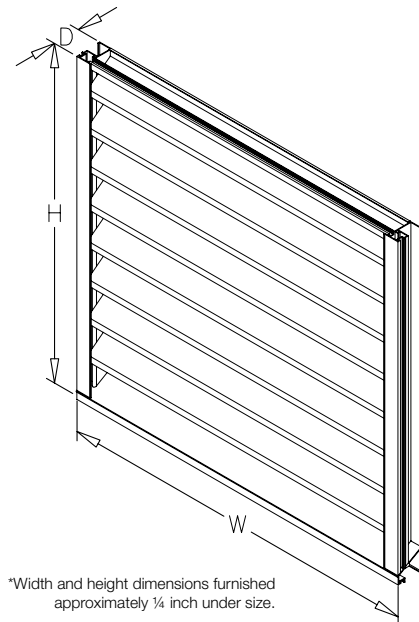
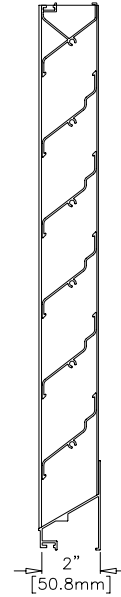
Minimum Size . . 6 in. W x 6 in. H

Maximum Single

Section Size . . . 120 in. W or 120 in. H. (limited to 70 ft. sq.)

Options (at additional cost)

- A variety of bird and insect screens
- Blank off panel
- Clip angles
- Extended sill
- Filter rack
- Flanged frame
- Glazing adaptor
- Hinged frame
- Security bars
- Welded construction
- A variety of architectural finishes including:
 - Clear anodize
 - Integral color anodize
 - Baked enamel paint
 - Kynar paint



*Width and height dimensions furnished approximately 1/4 inch under size.

01 - Ground Floor Louvers - Heavy gauge extruded 6063-T5 aluminum

AEL-42

Thinline Louver

Architectural Decorative Louver

APPLICATION

The AEL-42 louver is a 1.122" deep thinline stationary louver that is primarily used for PTAC, glazing mechanical screen and other aesthetic applications where water penetration is not a concern.

STANDARD CONSTRUCTION

Frame	Extruded aluminum; 6063-T6; 42° architectural decorative louver face and end views for illustration purposes only. A as required, not to exceed 120" (3048) per section. B as required, not to exceed 84" (2134) per section.
Blades	Standard blade thickness 0.064" and blade spacing .775" (19) with a variety of perimeter frames available.
Brace Bars	Brace bar as required, not to exceed 16" (406).

*Consult Reliable for larger sizes/multiple sections.

FEATURES

- Thin depth for limited space applications
- High free area
- Availability with a variety of frame styles
- Corrosion resistant, all aluminum construction
- Outstanding durability and low maintenance

VARIATIONS

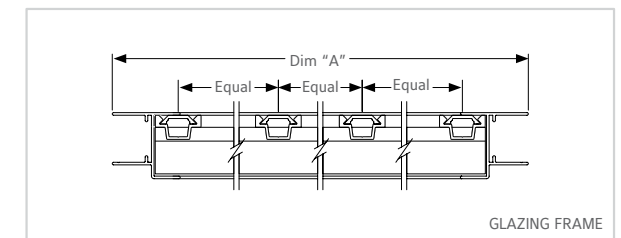
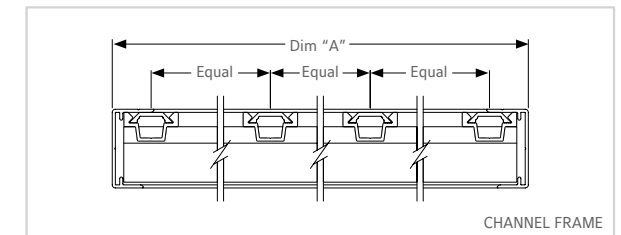
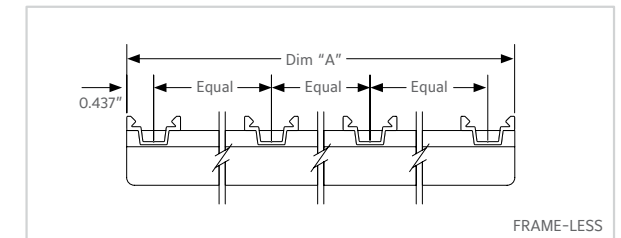
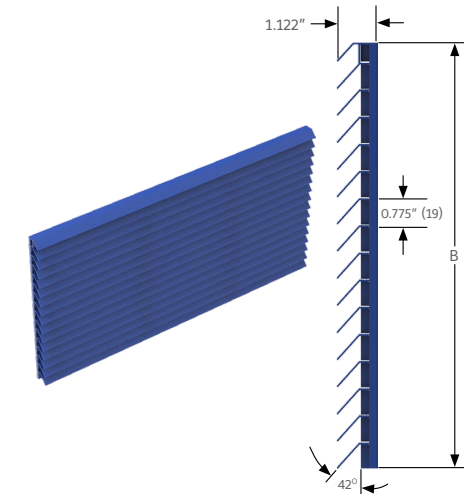
Variations to the basic design of the louver are available at additional cost. They include:

- See AEL frames for perimeter frame options
- 1" (25) blade spacing
- Exterior mounting holes as required
- Heavier blades available
- Aluminum sheet blankoff
- Blank off with 1" (25) insulation
- Blank off with 2" (51) insulation

FINISH TYPE

- Prime coat
- Baked Enamel 50% PVDF
- Pearledize 50 & 70
- 50 & 70 PVDF
- Clear and color anodize

*Consult Reliable for other special requirements.



02 - PTAC Louvers - Extruded aluminum; 6063-T6

ALUMINUM DOOR SYSTEMS

ALUMINUM SECTIONAL DOORS

Track detail

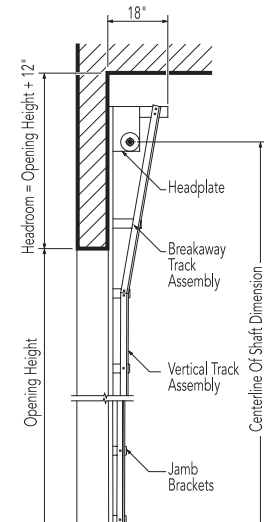
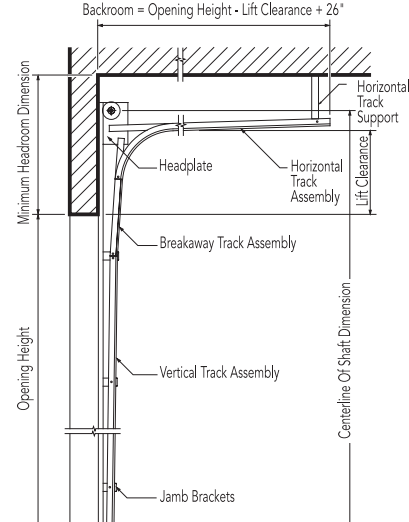
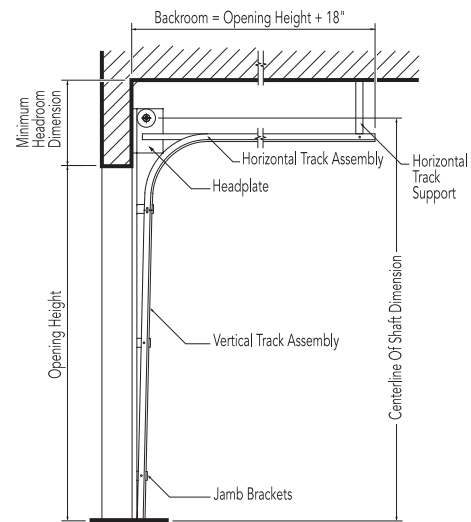
Any of the following track configurations can be selected for 511, 521 and 522 Aluminum door models.

O.H.=Opening height L.C.=Lift clearance D.H.=Door height

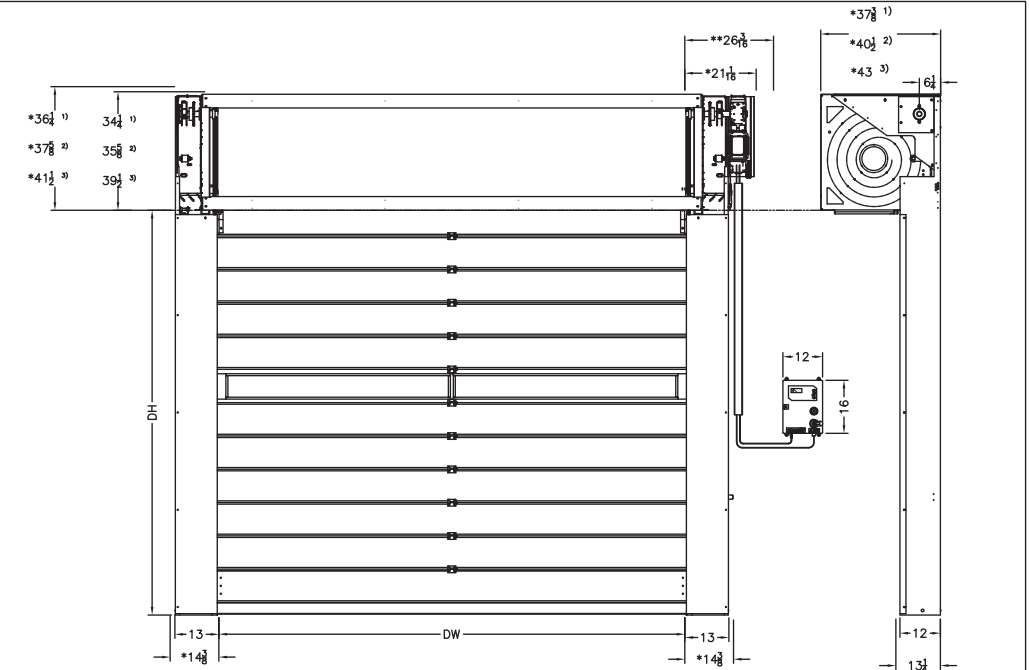
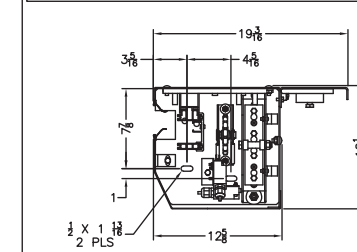
Standard lift track

Lift clearance track Standard

Full vertical track



MODEL:	SPEED GUARDIAN 5000U-42		
CUSTOMER:	-		
ADDRESS:	-		
CITY & STATE:	-		
JOB:	-		
LOCATION:	-		
COMPANY:	-		
SIZE:	DW=	DH=	
MOTOR LOCATION:	RIGHT	LEFT	
CONTROL BOX LOCATION:	RIGHT	LEFT	
VOLTAGE:	208V	230-240V	360-480V
WIRING:	HARD WIRED	SMART START	
VISION AREA:	-		
# OF VISION PANELS:	-	STARTING AT	-"
# OF PERFORATED PANELS:	-	STARTING AT	-"
OPTIONS:	-		
3 BUTTON PUSH STATION	-		
INDUCTION LOOP	-		
MOTION DETECTOR	-		
NOTES:	-		



ALL DIMENSIONS ARE IN INCHES.
*FITTING CLEARANCE.
**SPACE REQUIRED TO FIT AND DISMANTLE THE OPERATOR.
CONTROL BOX PROJECTION IS 6 INCHES.
DRAWING SHOWN RIGHT HAND, LEFT HAND OPPOSITE.

- 1) DH ≤ 177"
- 2) DH > 177" - ≤ 216"
- 3) DH > 216" - ≤ 256"

WE RESERVE THE RIGHT TO CHANGE SPECIFICATIONS WITHOUT NOTICE

HORMANN FLEXON LLC STARPOINTE BUSINESS PARK 117 STARPOINTE BOULEVARD BURGETTSTOWN, PA 15021-9506 PH: 724.385.9150 FAX: 724.385.9151 WWW.HORMANN-FLEXON.COM			
TITLE: HIGH PERFORMANCE DOOR SPECIFICATIONS			
MODEL:	SG5000U-42	PART #:	-
DRAWING #:	-	PAPER SIZE:	ANSI "B"
PAGE:	1 OF 1	SCALE:	N/A
QTY:	-	ENGINEER:	GJB
		DRAWN:	11/23/2016



CUT SHEETS: OVERHEAD DOORS