

OREGON ARCHIVES MONTH



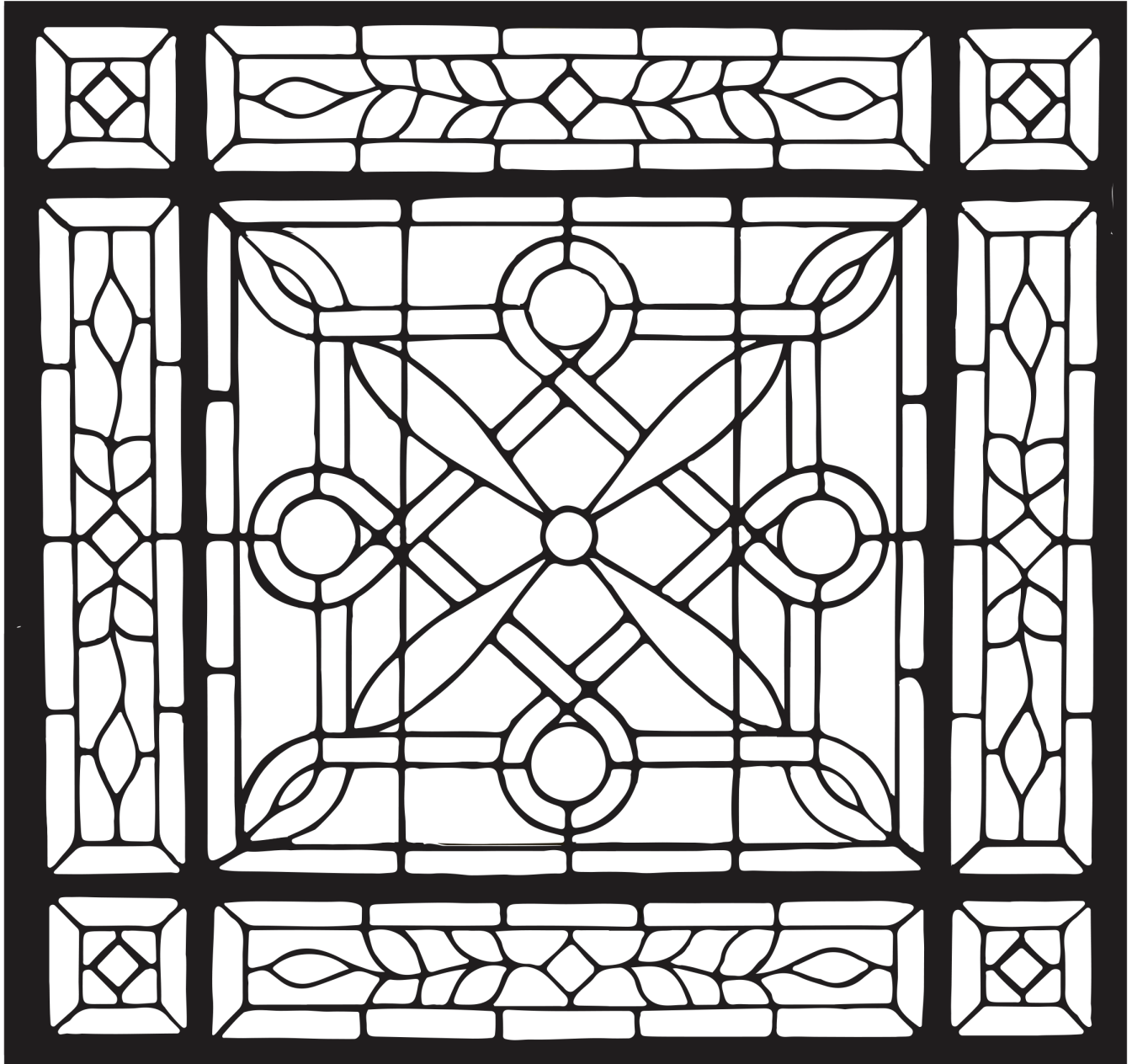
COLORING PAGES

Cover image: Dana, C. W. *The Garden of the World: Or, The Great West; Its History, Its Wealth, Its Natural Advantages, and Its Future: Also Comprising a Complete Guide to Emigrants, with a Full Description of the Different Routes Westward*. Boston: Wentworth and Company, 1856. (Oregon State University, Special Collections and Archives, History of the Pacific Northwest Collection, F593.D2)

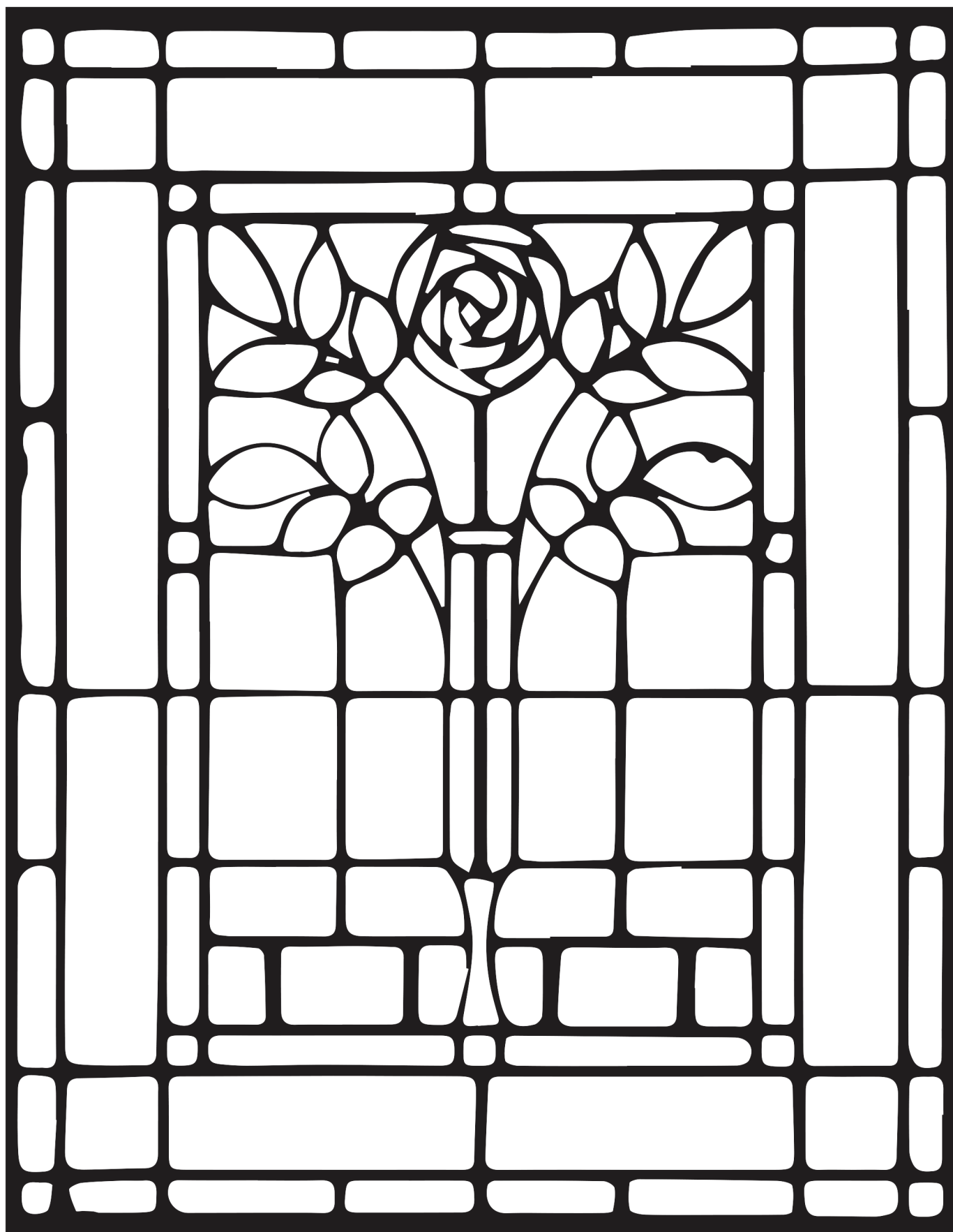
CONTENTS

ARCHITECTURAL HERITAGE CENTER	4
CITY OF PORTLAND ARCHIVES & RECORDS CENTER	6
GEORGE FOX UNIVERSITY ARCHIVES	9
MULTNOMAH COUNTY ARCHIVES	10
OHSU HISTORICAL COLLECTIONS & ARCHIVES	12
OSU SPECIAL COLLECTIONS & ARCHIVES	14

ARCHITECTURAL HERITAGE CENTER



Stained glass window with geometric and vine patterns, from First Methodist Church (SW 12th & Taylor), built 1889, demolished 1957. 1988.1.167a.



Mackintosh-style rose stained and leaded glass window, early 20th century. 1988.1.12a.

CITY OF PORTLAND ARCHIVES & RECORDS CENTER



Oregon Auto Top Company, circa 1917. [A2000-003.47](#).



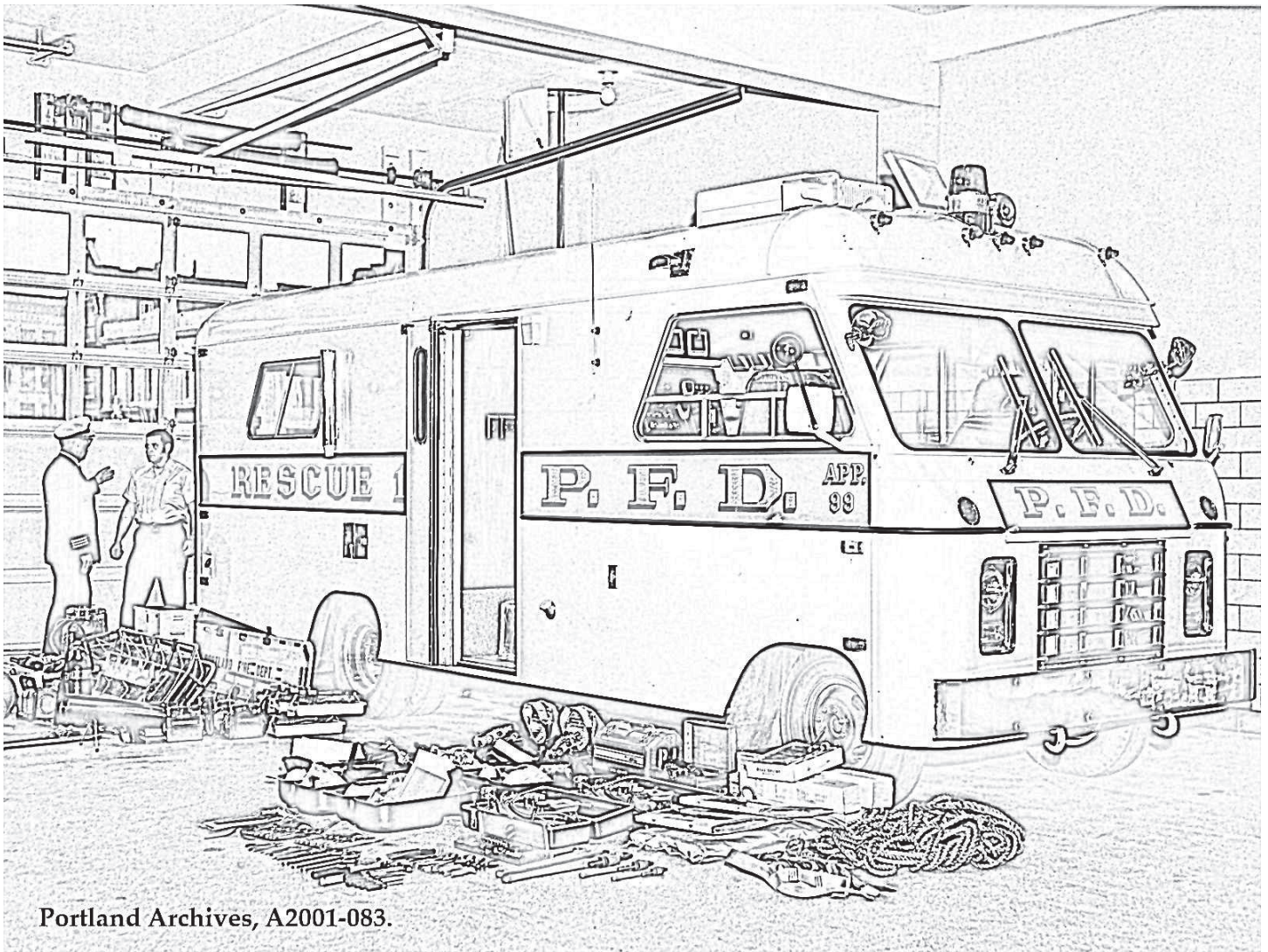
Portland Archives, A2009-009.124.

Store front views on 1300 block of SE Powell Blvd., 1926. [A2009-009.124.](#)



Portland Archives, A2009-009.1395

SE Foster Rd. and SE 92nd Ave., circa 1932. [A2009-009.1395.](#)

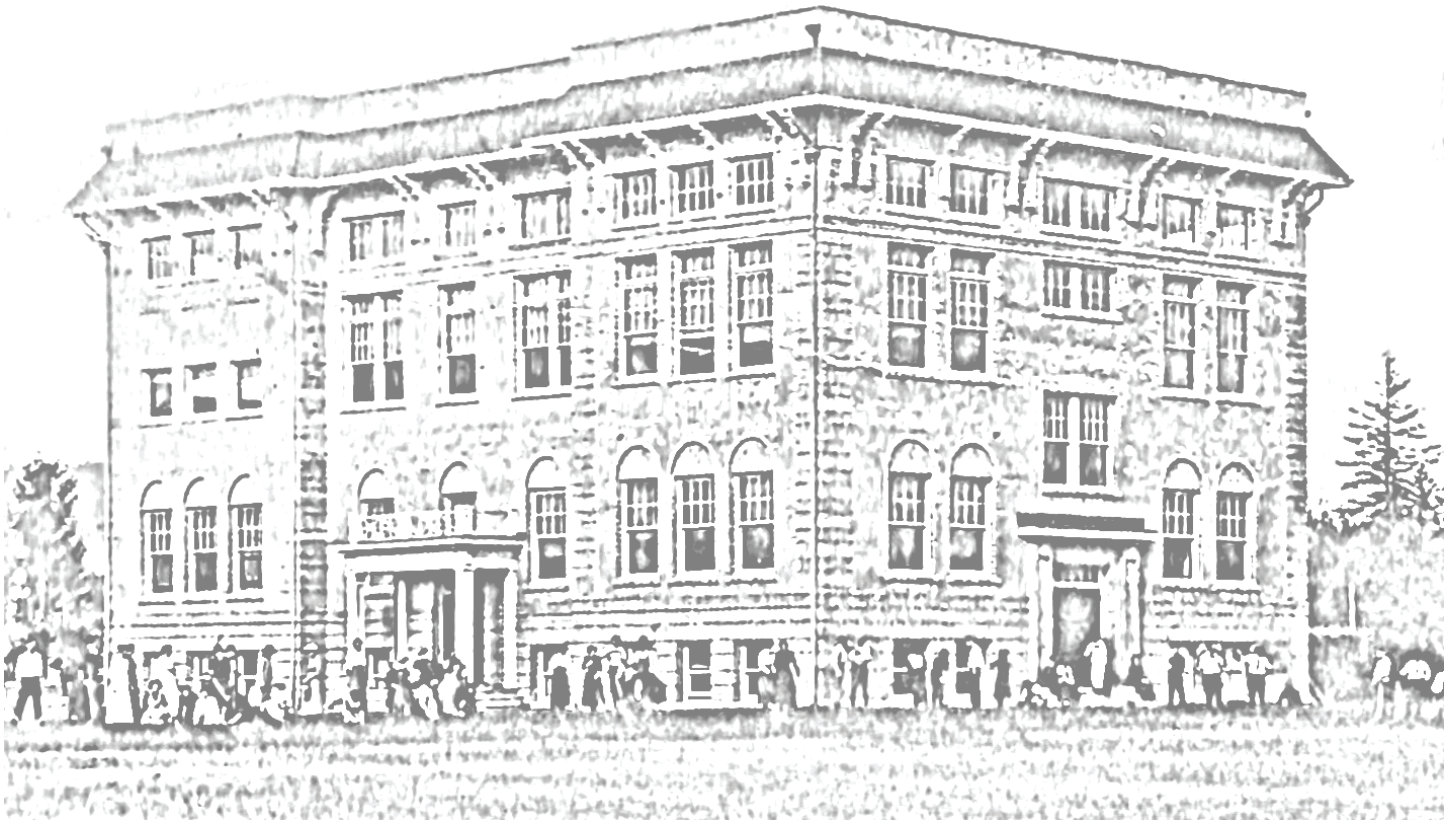


Portland Archives, A2001-083.

Rescue 1 unit parked in station garage with inventory organized next to vehicle, 1971. [AP/87648](#).

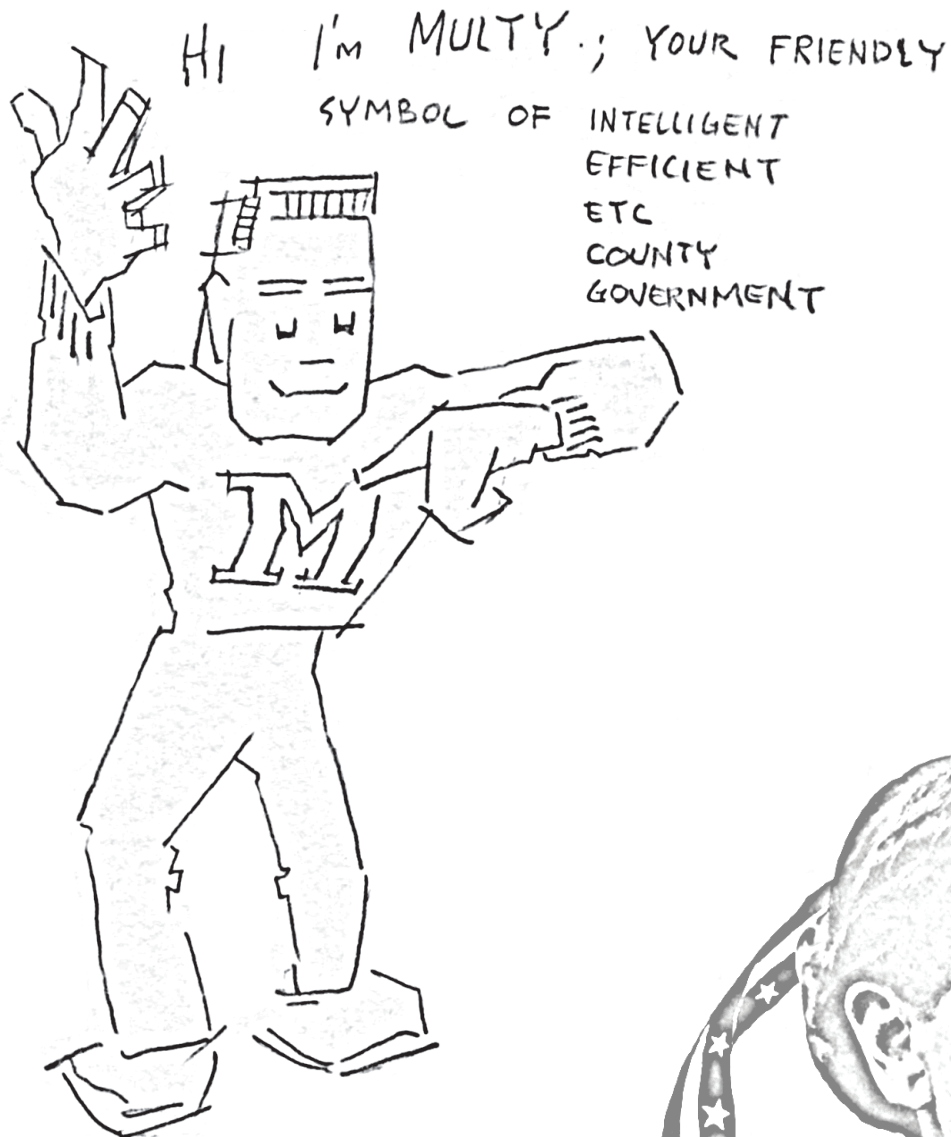
CITY OF PORTLAND ARCHIVES & RECORDS CENTER

GEORGE FOX UNIVERSITY ARCHIVES



Students and employees laying sod in front of Wood-Mar Hall at Pacific College (now George Fox University), 1911. Pacific College photograph collection.

MULTNOMAH COUNTY ARCHIVES



“Hi I’m Multy” overview, 1960s. [multco13.3.1.1.](#)



Abigail Scott Duniway promotional poster, 1994. [multco070.01.01.](#)



Cover image from Multnomah County Adopted Budget, 1986-1987. [multco72.1.33a](#).

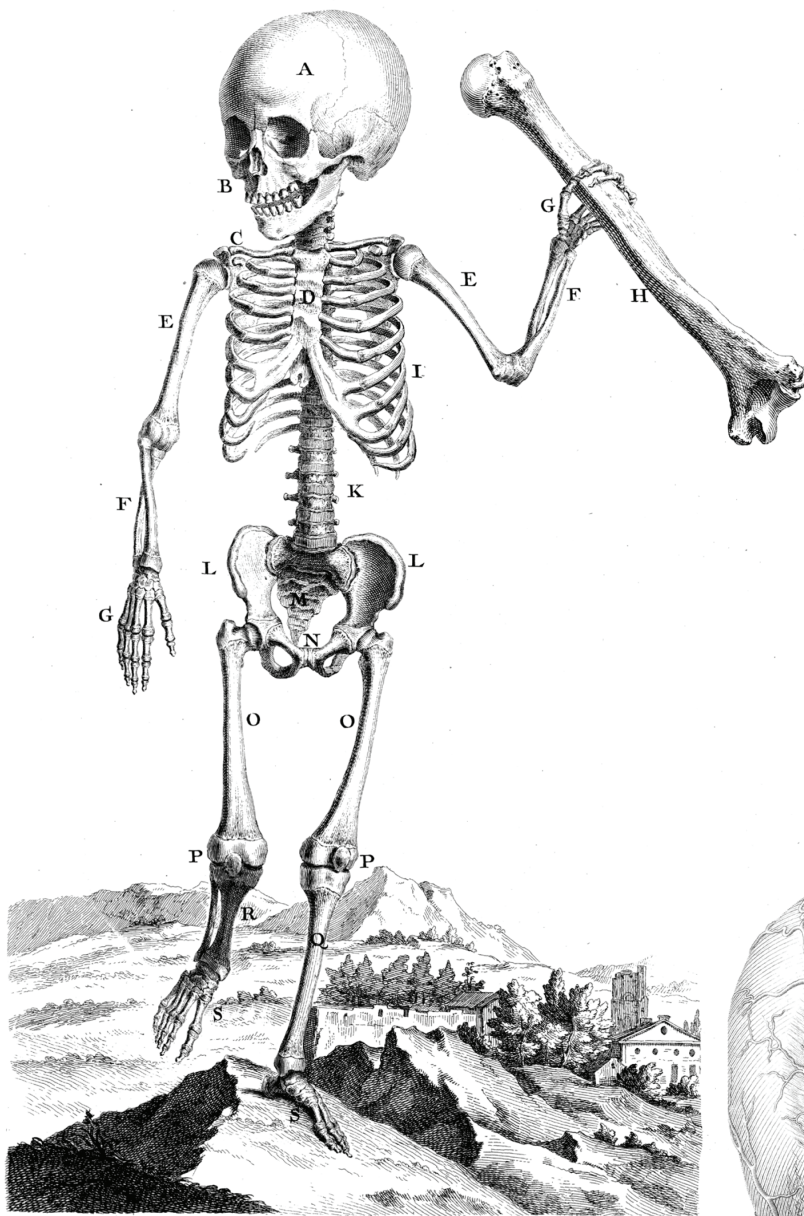
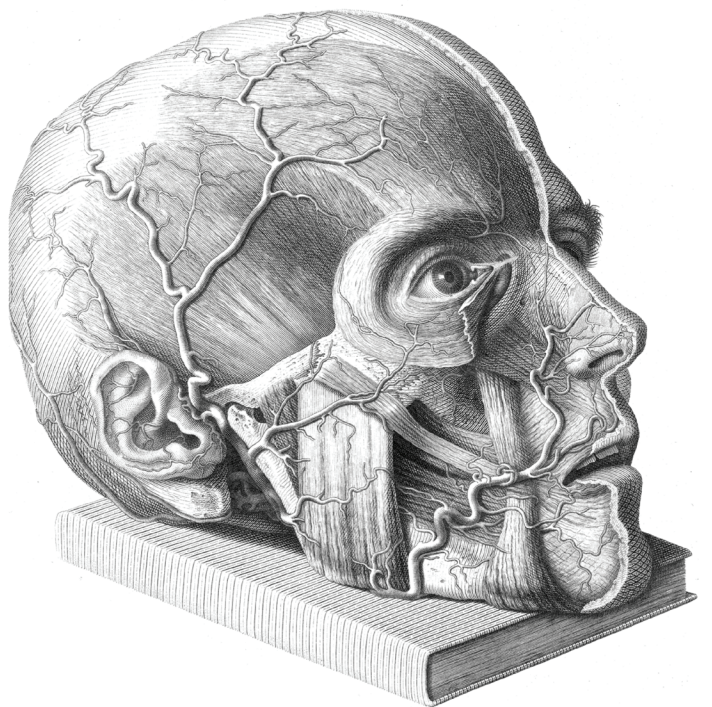


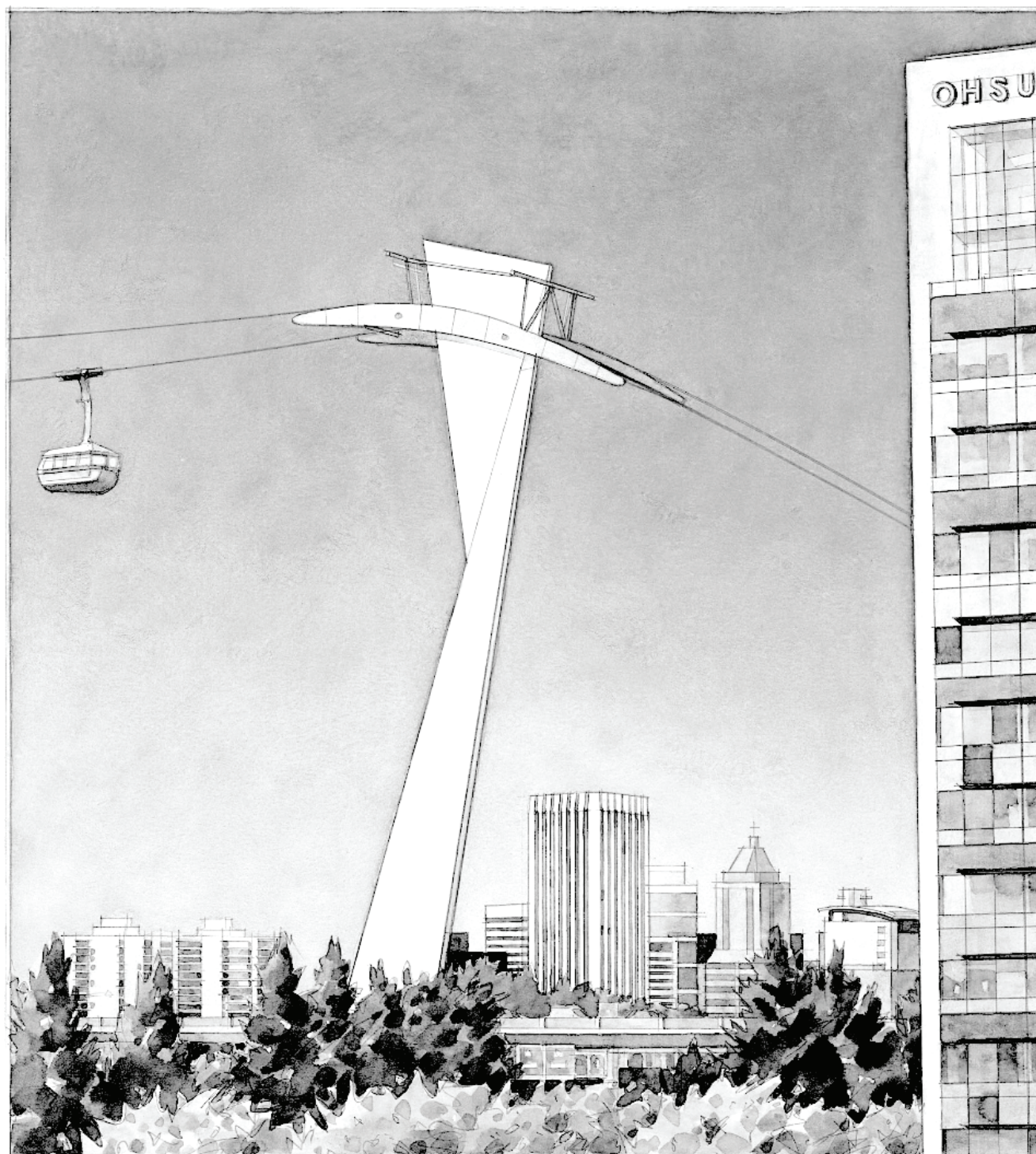
Plate 32, from William Cheselden, *Osteographia, Or, The Anatomy of the Bones: In Fifty-six Plates*, 1741. [QM25 C52o \[17--\]](#).



Antonio Scarpa, *Saggio di osservazioni e d'esperienze sulle principali malattie degli occhi*, 1801. [RE 46 S28 1801](#).

OHSU HISTORICAL COLLECTIONS & ARCHIVES

PORTLAND AERIAL TRAM



L I F T Δ O F F
J A N U A R Y 27 - 28, 2007

Portland Aerial Tram opening poster, 2007. Historical Image Collection.



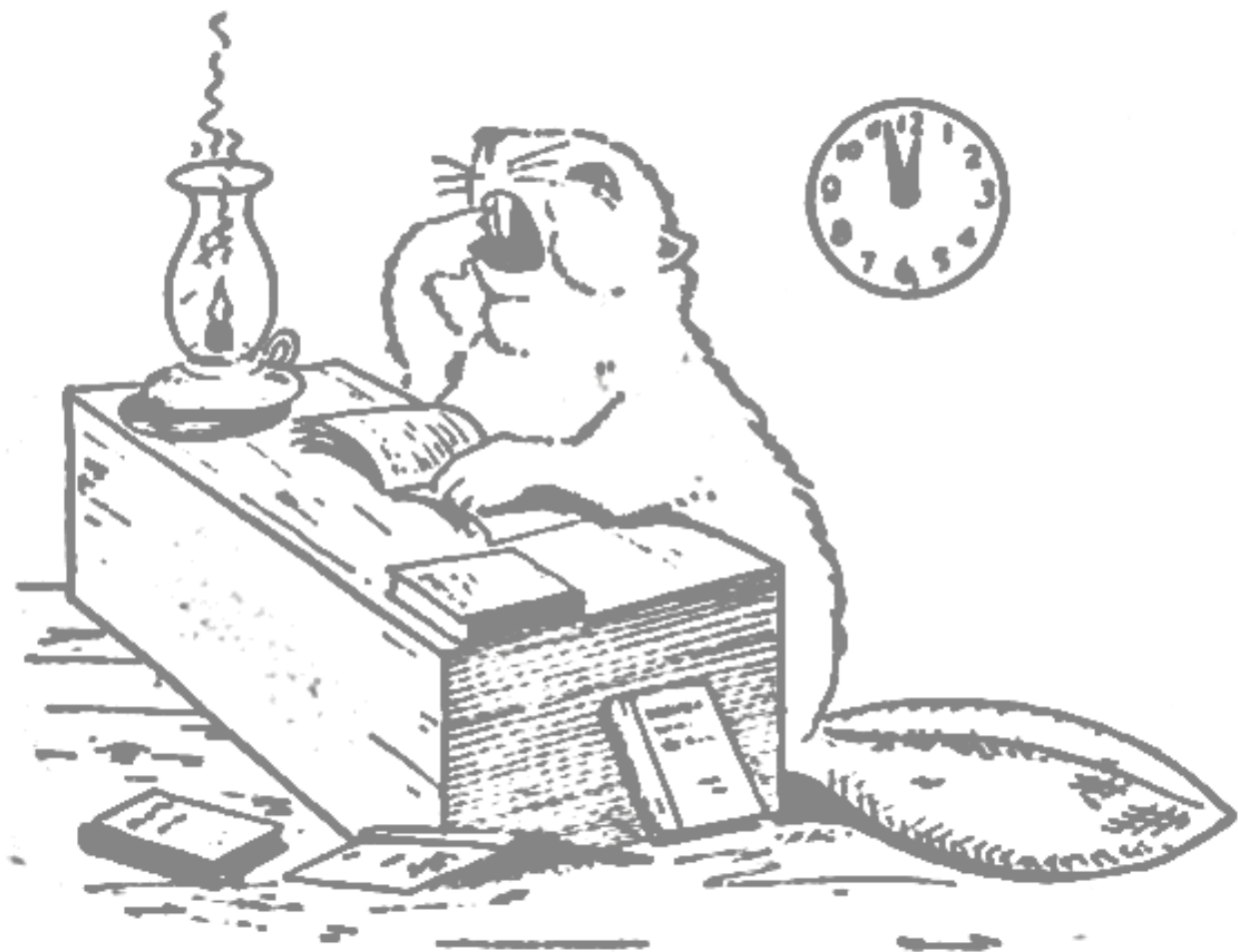
Ernest Thompson Seton, *Lives of Game Animals: An Account of Those Land Animals in America, North of the Mexican Border, which Are Considered "game," Either Because They Have Held the Attention of Sportsmen, or Received the Protection of Law.* 1929. [Q1151 .S4 1929](#).

OSU SPECIAL COLLECTIONS & ARCHIVES



Omar Khayyam, Edward FitzGerald (translator), Ronald Balfour (illustrator), *Rubáiyát of Omar Khayyám*, 1920. [PK6510 .D6 no.50](#).

Brainy Beaver is proud that she studies



Co-ed Code, from "Associated Women Students handbooks, 1924-1963," [SCARC-PUB 010-23d](#).

More available online: <https://www.flickr.com/photos/osuarchives/albums/72157633114725022>.

OSU SPECIAL COLLECTIONS & ARCHIVES



Drawings from "Library records, 1908-2002," [SCARC-RG09](#).

More available online: <https://www.flickr.com/photos/osuarchives/albums/72157632871475113>.

featuring images from the archival collections of:

Architectural Heritage Center

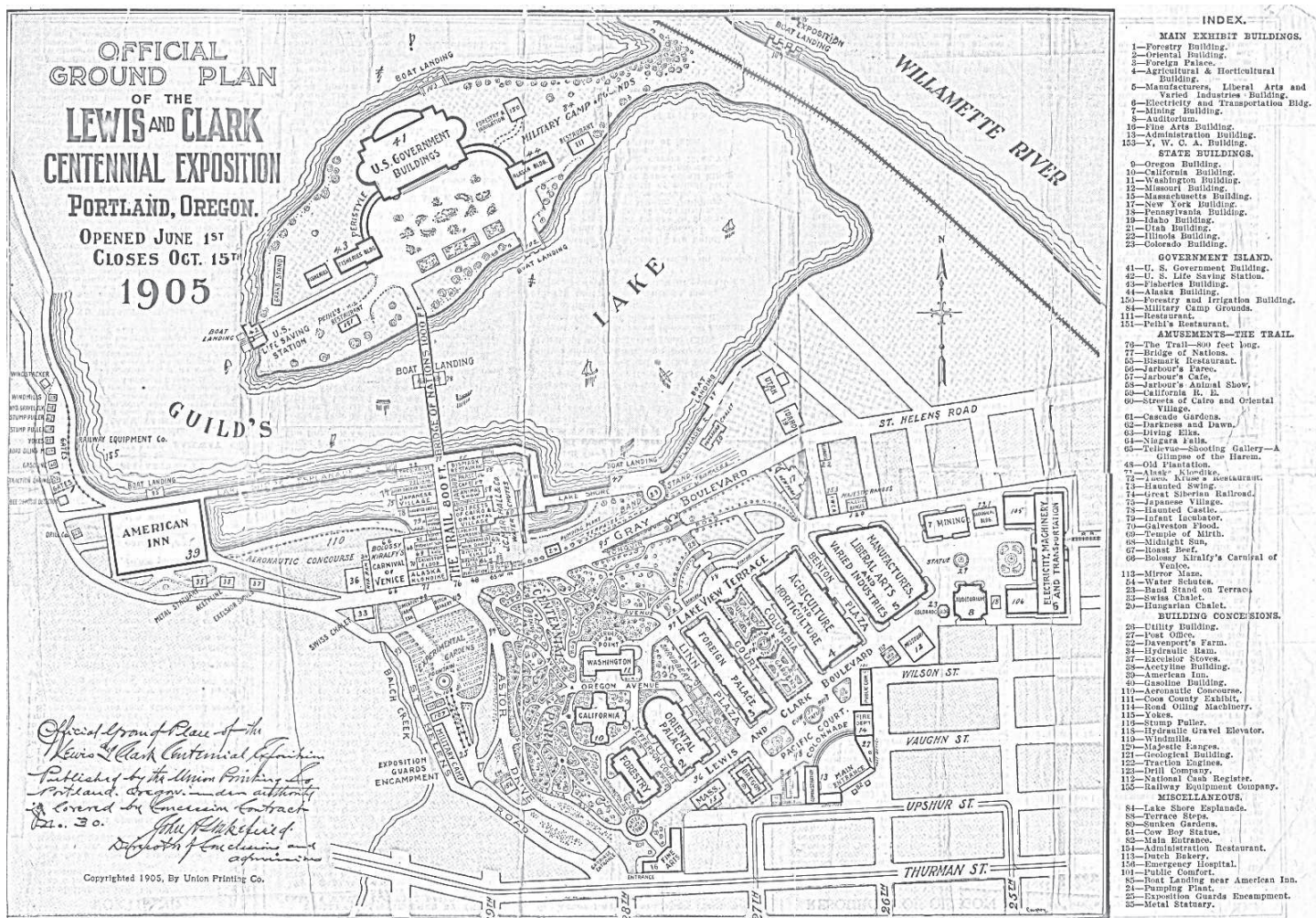
City of Portland Archives & Records Center

George Fox University Archives

Multnomah County Archives

Oregon Health & Science University, Historical Collections & Archives

Oregon State University, Special Collections and Archives



Official Ground Plan of the Lewis and Clark Centennial Exposition, 1905. City of Portland (OR) Archives, M/10624. <https://efiles.portlandoregon.gov/Record/16943>.