

COMMUNITY IS KEY



PCEF Grant Committee Meeting

September 10, 2021, 6:00 – 8:30 p.m.

PORTLAND
**CLEAN ENERGY
COMMUNITY BENEFITS
FUND**



Bureau of Planning and Sustainability

VISIT US ONLINE
portland.gov/bps/cleanenergy

Virtual Participation Check

Guidelines for public participation

- Committee meetings open to the public
- Public invited to comment at around 6:05 p.m.
- Opportunities for public engagement in other forums/meetings

➔ Guidelines applied to virtual meeting:



Chatbox: open for introductions and public comment. All other times, host-only chats (PCEF Staff).



Raise Hand: used by Committee only.



Video: on for Committee only.



Microphone: public members muted unless giving public comment or for introductions.



Recording: this meeting is being recorded.



Captioning: this meeting is being captioned; settings > show subtitles.

Introductions & opening

Guiding Principles



Agenda

| | |
|------|---|
| 6:00 | Open |
| 6:05 | Public comment |
| 6:10 | Timeline review |
| 6:15 | Review (and potentially approve) grant scoring criteria and recommended changes |
| 6:55 | Break |
| 7:15 | Discuss (and potentially approve) extreme heat response request for proposals outline |
| 8:20 | Committee member comments |
| 8:30 | Meeting close |

Timeline

| Date | Topics | Notes |
|----------------------------|--|--------------------------|
| June 2 | Minimum scores, threshold review, innovation/other | |
| June 16 | Anti-displacement, threshold review, audit response | |
| July 7 | Land/building acquisition, workforce development and contractor support grants, return to grant caps | |
| July 21 | Evaluation findings, recommended improvements | |
| August 4 | Discuss draft RFP, release draft RFP for public comment | Committee decision point |
| Sept 1 | Potential Committee public comment listening session | |
| <u>September 8/10</u> | Review public comment and recommended changes to final RFP | Committee decision point |
| <u>September 28</u> | Updated goal for release of RFP #2 | |

Review scoring criteria and recommended changes

GHG – how we address GHG reductions and cost effectiveness

Eligibility criteria

- PCEF projects must address both climate change and advance racial and social justice within one of the program's funding categories:



CLEAN ENERGY

40% – 60%

\$24 to \$36 million

- Renewable energy and energy efficiency projects for residential, commercial, and school properties.



GREEN INFRASTRUCTURE & SUSTAINABLE AGRICULTURE

10% – 15%

\$6 to \$9 million

- Projects that reduce/sequester greenhouse gases, improve water quality, and create a healthier urban environment.



WORKFORCE DEVELOPMENT & CONTRACTOR SUPPORT

20% – 25%

\$12 to \$15 million

- Job training, apprenticeship programs, and business technical assistance, with a focus on economically disadvantaged workers and businesses.



INNOVATION

5%

\$3 million

- Projects that do not fall into one of the above categories but supports climate goals and advance racial and social equity. Special allocation of \$1.5 million for transportation projects that reduce GHG emissions.



CLEAN ENERGY

40% – 60%



**GREEN INFRASTRUCTURE
& SUSTAINABLE AGRICULTURE**

10% – 15%



INNOVATION

5%

Eligibility Criteria

(project **must** reduce GHG emissions
and align with a funding area)

Technical screening

(project **must** be technically feasible)

GHG reduction
criteria
(33%)

GHG reduction
related criteria
(10%)

Equity criteria
(34%)

Standard application scoring criteria impacted by GHG reductions

For clean energy (energy efficiency and renewable energy), regenerative agriculture and green infrastructure projects there are five criteria where a high score is closely tied to reductions in GHG emissions.

These five criteria are worth **33% of total score** for large standard grants.

| Criteria | Possible points |
|--|-----------------|
| Services, activities, and timeline described in scope will result in greenhouse gas emissions reductions as proposed . | 5 |
| Appropriate plan to maintain project GHG emissions reductions for its full useful life (beyond the life of grant). | 2 |
| Indirect GHG reduction/sequestration will result from project activities not associated with physical improvements and/or infrastructure. Examples include outreach, education and community engagement around climate issues, energy conservation education, etc. | 2 |
| Project reduces electricity, natural gas, transportation fuel, food, and/or other household utility cost for people with low income, Black people, Native American/Alaska Native people, and/or other people of color. | 8 |
| GHG emissions reduction (including sequestration) cost effectiveness and/or impact | 8 |
| Alignment with PCEF guiding principles | 8 |

Standard application scoring criteria

Closely associated with GHG reductions

There are an additional three criteria which are likely (based on what we have seen) to score higher in association with GHG reduction.

These three criteria are worth an additional **10% of total score** for large standard grants.

| Criteria | Possible points |
|--|-----------------|
| Project provides health benefits to PCEF priority populations. | 6 |
| Project improves climate resiliency by 1) addressing the harm to frontline communities caused by climate change, and/or 2) improving ability to withstand and adapt to existing and future climate impacts | 4 |

Standard application scoring criteria impacted by Equity related measures

There are six criteria that are meant to prioritize equity.

- These six criteria are worth **34% of total score** for large standard grants.

| Criteria | Possible points |
|--|-----------------|
| Organization has a track record of delivering programs that benefit Black people, Native American/Alaska Native people, other people of color, and/or people with low income. | 5 |
| Staff (including leadership) and board of the organization reflect the community their proposed project is intended to benefit. | 9 |
| Application demonstrates strong understanding and practice around community organizing, outreach, and/or stakeholder engagement, particularly focused on historically marginalized and culturally diverse communities. | 6 |
| Inclusive contracting and subcontracting | 6 |
| Percent of project benefits to specific PCEF priority populations. | 6 |
| Project pays prevailing wages to workers in trades for which a prevailing wage is defined and/or provides other benefits. | 2 |

Recommended changes based on public comment

- Reflecting community project is intended to serve criterion:
 - Modify to allow flexibility for applicants who primarily serve people with intellectual and developmental disabilities.
 - Clarify how organizations consider the experience of being a person with low income with regard to staff, leadership and board representation. E.g., financial insecurity impacting health, transportation, food, housing and/or childcare.
- Modify GHG criteria in alignment with red-lined additions on slide 11.
- Workforce requirements – add demonstration/documentation requirement for efforts to comply with workforce utilization commitments.

Recommended changes based on public comment

Reflecting community project is intended to serve criterion

| Criteria | Full points | Middle points | Low points |
|---|--|---|---|
| Staff (including leadership) and board of the organization reflect the community the proposed project is intended to benefit. | <p>Majority (more than 50%) of staff (including staff leadership) and board of directors reflect the community the project is intended to serve. In the case of projects whose beneficiaries are people who are low income this may include prior rather than current lived experience.</p> <p>For organizations that primarily serve people with intellectual and developmental disabilities, narrative description demonstrates active efforts to increase representation of people with disabilities and meaningful inclusion of close family and friends of people with intellectual or developmental disability in board and other decision-making roles.</p> | <p>At least 40 percent of staff (including staff leadership) and board of directors reflect the community the project is intended to serve. In the case of projects whose beneficiaries are people who are low income this may include prior rather than current lived experience.</p> <p>For organizations that primarily serve people with intellectual and developmental disabilities, narrative description demonstrates meaningful inclusion of close family and friends of people with intellectual or developmental disability in board and other decision-making roles.</p> | <p>At least 30 percent of the staff and board of directors reflect the community the project is intended to serve.</p> <p>For organizations that primarily serve people with intellectual and developmental disabilities, narrative description demonstrates clear plans underway for greater inclusion of close family and friends of people with intellectual or developmental disability in board and other decision-making roles.</p> |

Recommended changes based on public comment

- Reflecting community project is intended to serve criterion:
 - Modify to allow flexibility for applicants who primarily serve people with intellectual and developmental disabilities.
 - Clarify how organizations consider the experience of being a person with low income with regard to staff, leadership and board representation. E.g., financial insecurity impacting health, transportation, food, housing and/or childcare.
- Modify GHG criteria in alignment with red-lined additions on slide 11.
- Workforce requirements – add demonstration/documentation requirement for efforts to comply with workforce utilization commitments.

Discussion and...

Discussion: Do the recommended changes meet the needs of the PCEF Committee?
Does the Committee have any additional questions or need for clarification?

Decision? Is the Committee ready to make a proposal?



Break (20 minutes)

(until 7:15)

2022 PCEF Heat Hazard Response – Program Concept

Goals of Response

1. Address heat hazard needs for vulnerable people, particularly seniors, among our priority populations (low-income, BIPOC)
2. Use PCEF Guiding Principles in design and deployment
3. May/June 2022 implementation for initial distribution and installation, 3-5 year total deployment of 12k -15k units
4. Promote efficient installation, use and connection to programs to lower energy bills
5. Sustain long-term product life, usability & support

Technologies for Consideration

Portable Multi-Use Heat Pumps (cooling/heating/dehumidifier)



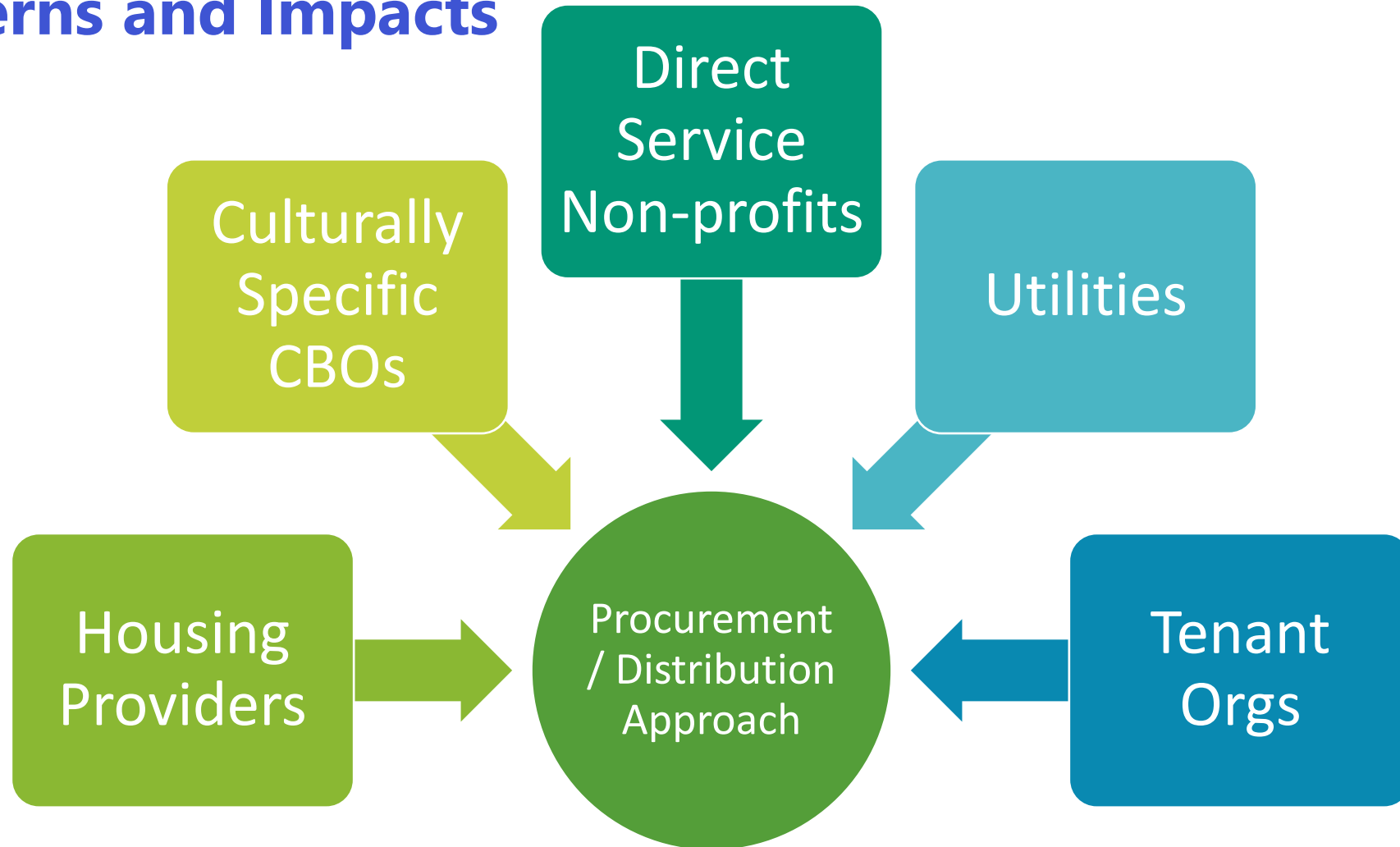
Window Unit Heat Pumps (cooling primarily, some units can provide heating)



HEPA Air Purifiers



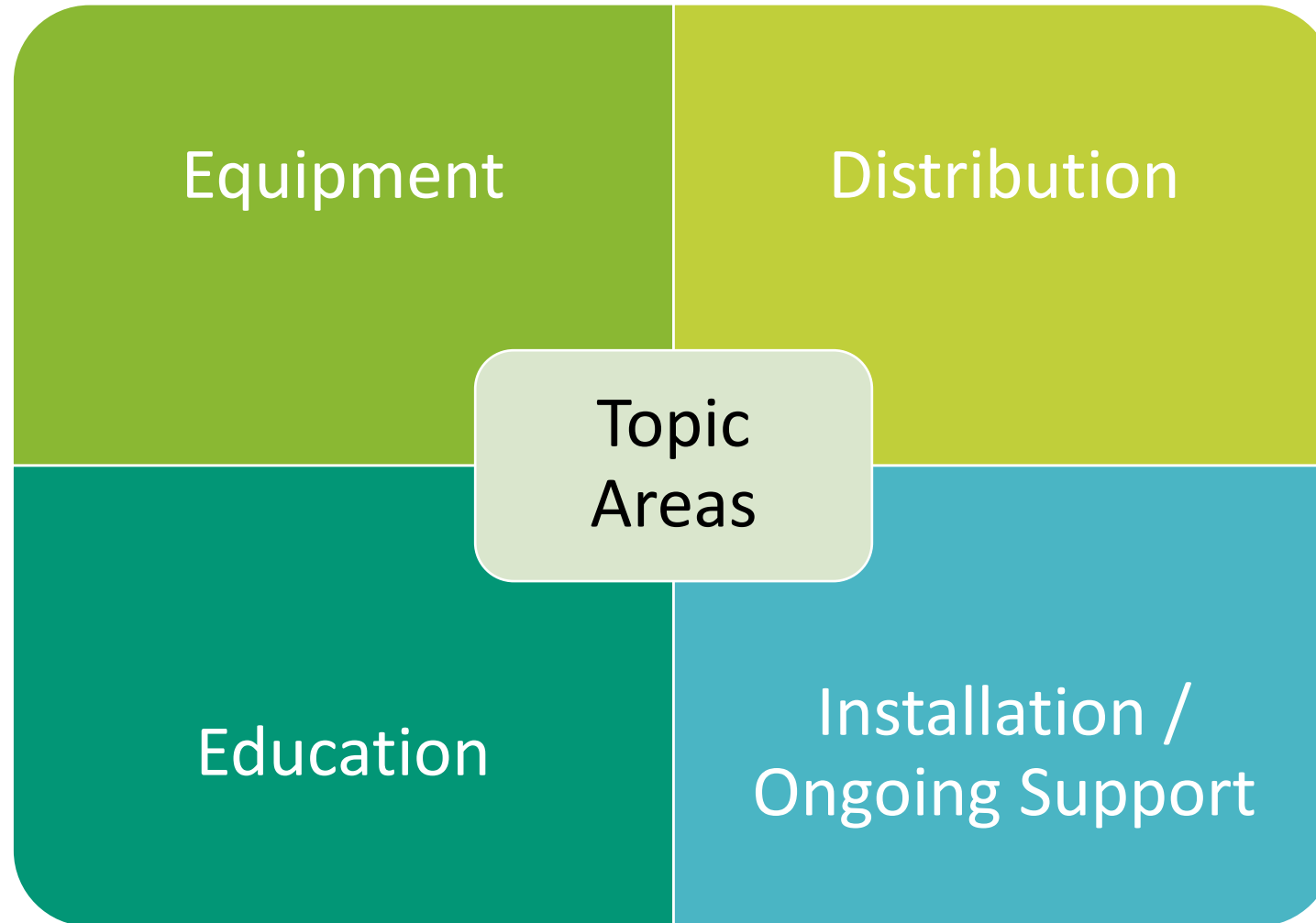
Stakeholder Outreach and Input – Identified Needs, Concerns and Impacts



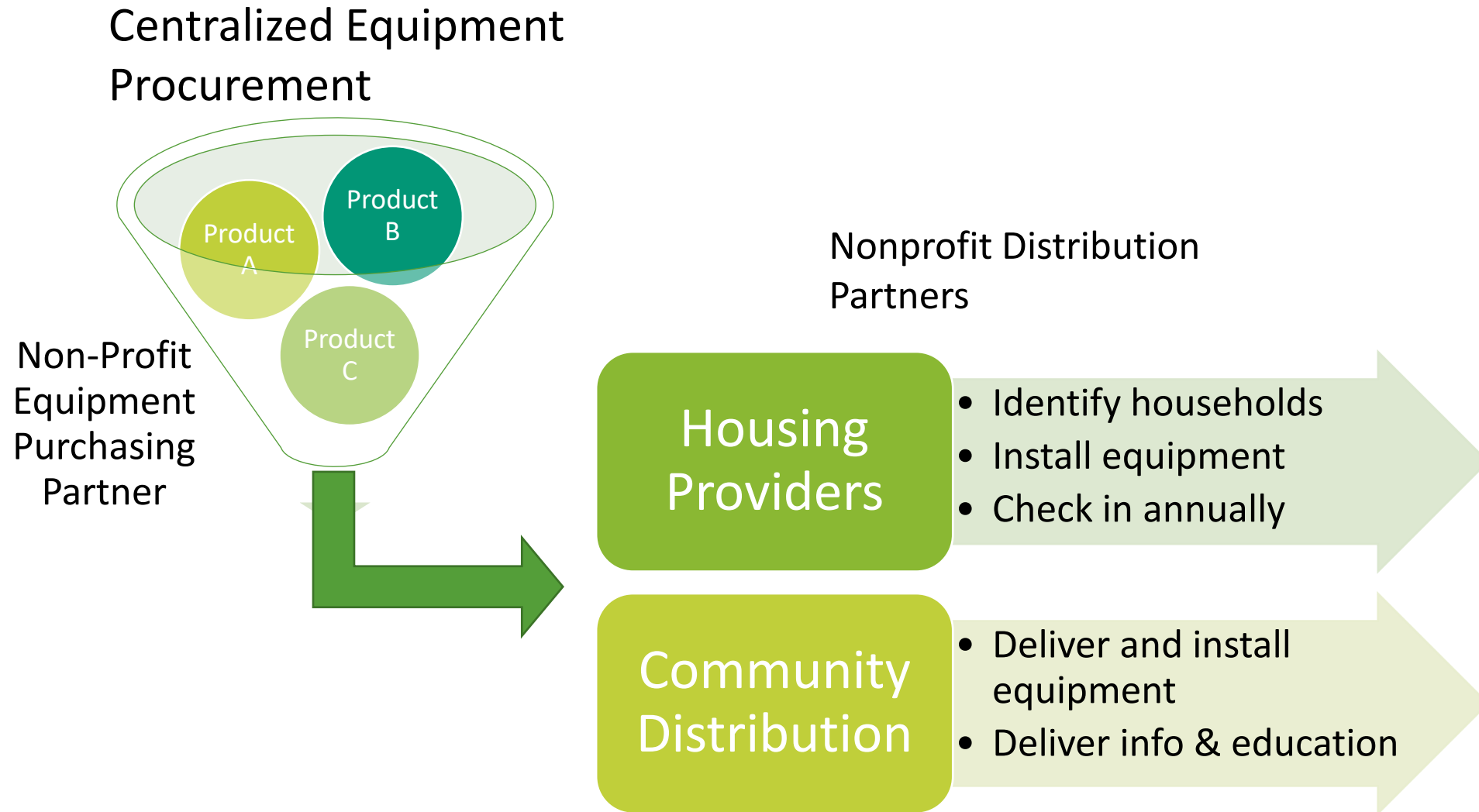
Stakeholder Outreach and Input – Organizations (and outreach ongoing)

| | |
|-------------------------------|---------------------------|
| BridgeMeadows | Latino Network |
| Bureau of Emergency Mgmt | Meals on Wheels |
| Central City Concern | Multnomah County |
| Community Alliance of Tenants | Pacific Power |
| Community Energy Project | PCRI |
| Energy Trust of Oregon | Portland Housing Bureau |
| Hacienda CDC | Portland General Electric |
| Habitat for Humanity | Portland Tenants United |
| Home Forward | Taking Ownership PDX |
| Innovative Housing | Verde |

Needs Assessment – Conversations/ Input with Orgs to Assess Interest and Needs



Procurement Pathway Model for Heat Response



Roles and Next Steps

Equipment Purchasing Partner

Refine necessary qualifications and capacity

Select Partner in Oct/Nov Committee Meeting

City Council action in Nov

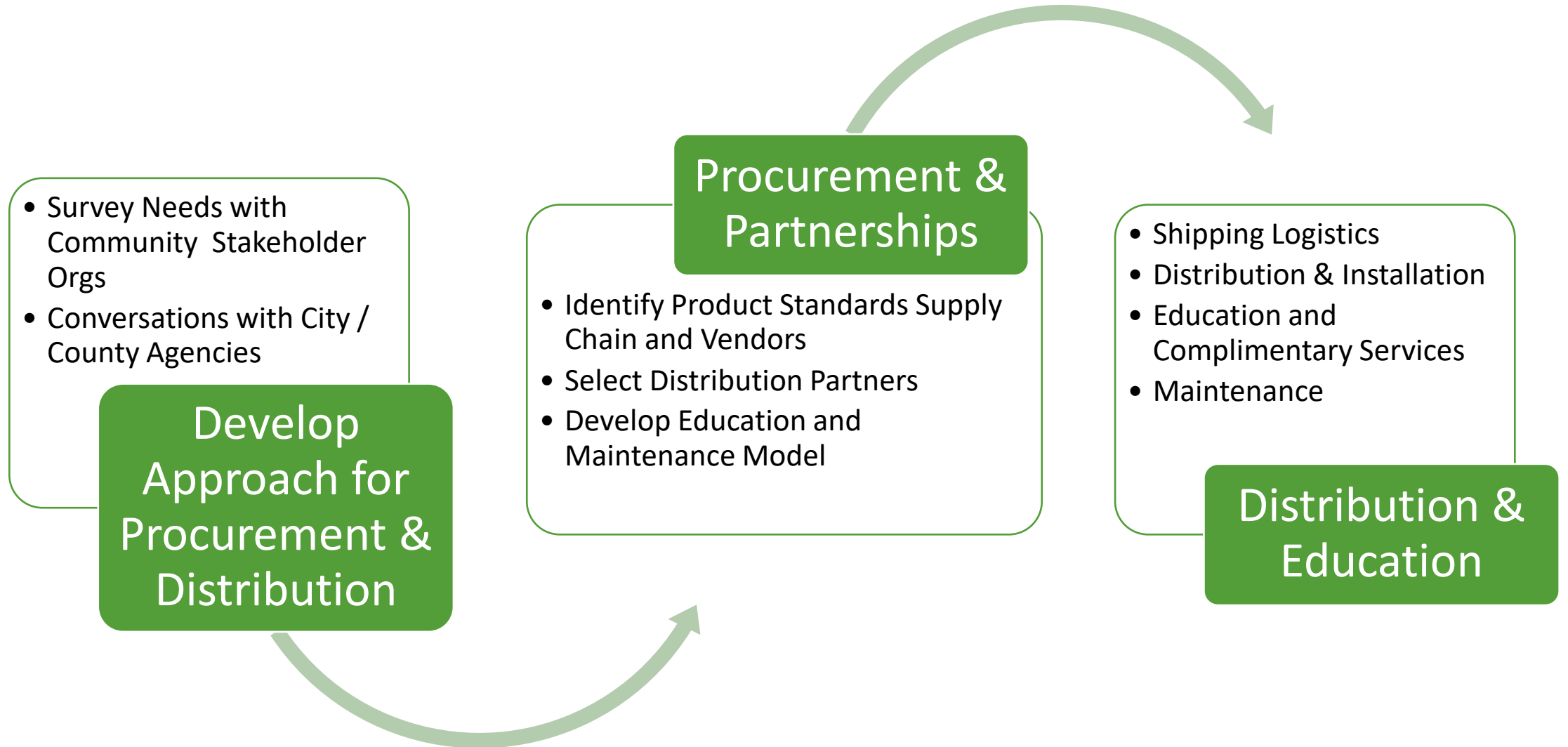
Distribution Partners

Refine requirements for distribution & installation

Release RFP close to Sept 28th

Select Portfolio of Distribution Partners shortly after RFP closing

Additional Steps to Implementation



Discussion, questions and...

Decision? Is the Committee ready to make a proposal?



Committee member comments

COMMUNITY IS KEY



— PORTLAND —
**CLEAN ENERGY
COMMUNITY BENEFITS
FUND** —



Bureau of Planning and Sustainability

A program by City of Portland,
Bureau of Planning and Sustainability
VISIT portland.gov/bps/cleanenergy

Guiding Principles



Modified consensus decision making process

- **Proposal** – put forth for consideration by Committee member
- **Temperature check** – each Committee member indicates how comfortable they are with making an affirmative decision
- **Discussion** – additional discussion if needed
- **Amendments** – Committee members can offer amendments to the original proposal
- **Decision** – each Committee member can 1) affirm the proposal, 2) stand aside, or 3) indicate that “no” they do not support the proposal. Note that standing aside is counted as a decision to affirm for the purposes of approving a proposal.

The following minimum number of affirmative decisions is required for a decision to represent the position of the PCEF Committee.

- When 6 or 7 Committee members are present : 5 Affirmative decisions
- When 8 or 9 Committee members are present : 6 Affirmative decisions