

RESOLUTION No. 35169

Adopt the Action Charts of the Albina Community Plan and accompanying 11 Neighborhood Plans developed with and as a part of the Albina Community Plan. (Resolution)

WHEREAS, the Albina Community Plan Process Document was approved by the Portland City Planning Commission on January 9, 1990;

WHEREAS, the goals and objectives of the North/Northeast Task Force (now known as the North/Northeast Economic Development Alliance) Revitalization Strategy were adopted by the Portland City Planning Commission as part of the Albina Community Plan Process Document and these objectives were used as the basis for discussion with neighborhood groups, business associations and other concerned citizens in the formulation of the Albina Community Plan, 11 accompanying Neighborhood Plans, and implementing measures;

WHEREAS, the approved process document named the study area the Albina Community Plan, delineated boundaries for the study area, approved planning objectives for the process, and established the process for development of the plan and for citizen involvement in the plan's development;

WHEREAS, the Albina Community Plan is a comprehensive, realistic, and coordinated revitalization action plan covering policy areas of land use, transportation, business growth and development, jobs and employment, housing, education, public safety, family services, community image and character, and environmental values;

WHEREAS, the following 11 neighborhood associations chose to develop a neighborhood plan in conjunction with the Albina Community Plan to address neighborhood specific issues, opportunities, and barriers to stability and revitalization - Arbor Lodge, Boisé, Concordia, Eliot, Humboldt, Irvington, Kenton, King, Piedmont, Sabin and Woodlawn;

WHEREAS, Albina Community households, businesses, institutions, public and non-profit corporation service providers, and community-based organizations and associations have actively participated in the Albina Community's 4 year planning process and worked together to develop a shared vision of the Community's future, identify public and private resources for implementation of the plans' goals and objectives, and coordinate revitalization strategies among implementors to achieve the Community's envisioned future;

WHEREAS, successive drafts of the Albina Community Plan and 11 Neighborhood Plans were reviewed and evaluated over a four-year planning period by the Albina Community Plan Technical Advisory Committee (TAC), consisting of METRO, Tri-Met, Multnomah County, Housing Authority of Portland, Portland City Schools Liaison, Portland Development Commission, and Portland Bureaus of Buildings, Environmental Services, Housing and Community Development, Parks and Recreation, Planning, Police, and Transportation;

WHEREAS, successive drafts of the Albina Community Plan were reviewed and evaluated over the Plan's four year formulation process by the Albina Community Plan Technical Advisory Network, consisting of State agencies such as the Oregon State Employment Division, Economic Development Department, and Transportation Department; neighborhood-based groups such as the Albina for profit corporations and non-organizations such as the Urban League of Portland, United Way, 40 Mile Loop Trust Historic Preservation League of Oregon, Interstate Firehouse Cultural Center, Portland Future Focus, NE Coalition of Neighbors, Northeast Community Development Corporation, American Institute of Architects-Portland Chapter, Union Apprenticeship Programs; Albina educational and medical institutions such as Portland Community College, Portland School District #1, Concordia College, Portland State University, Emanuel Hospital and Kaiser Permanente; public utilities such as Pacific Power and Light and Portland General Electric; and community-based organizations such as the North/Northeast Economic Development Alliance and Family Services and Jobs and Employment Committees; Peninsula Children's Center, Cascade Business Center Corporation, City/County Advisory Committee of the Disabled, Portland Chamber of Commerce, Oregon Association of Minority Entrepreneurs, Northeast Workforce Center, and Portland Housing Center;

WHEREAS, the Action Charts consist of projects, programs, and regulatory actions necessary for the implementation of the policies and objectives of the Albina Community Plan and 11 Neighborhood Plans;

WHEREAS, the Action Chart implementation framework of 20 years is timed and phased to take into account the step-wise achievement of Plan policies and objectives within the resource limits available over time to identified voluntary plan implementors;

WHEREAS, the southern portion of the Eliot Neighborhood is designated as a distressed area and an additional action item (SE7) is needed in the Eliot Neighborhood Plan Policy 11: Southern Eliot to create parallel language found in Policy 10: Northern Eliot: Action Item EN10;

WHEREAS, the vision statements, policies and objectives of the Albina Community Plan and 11 Neighborhood Plans are consistent with and incorporated into the acknowledged Portland Comprehensive Plan;

WHEREAS, the attainment of the visions, policies, and objectives of the Albina Community Plan and Neighborhood Plans are dependent upon the coordination of independent actions carried out by private interests, non-profit organizations, area institutions, public service providers and community-based associations over the 20 year period of the Albina Community Plan and Neighborhood Plans;

NOW, THEREFORE, BE IT RESOLVED by the Council of the City of Portland, a municipal corporation of the State of Oregon that the City Council adopts the Action Charts of the Albina Community Plan and 11 accompanying Neighborhood Plans (Arbor Lodge, Boise, Concordia, Eliot, Humboldt, Kenton, King, Piedmont, Sabin and Woodlawn).

It is understood that the action charts which specify the projects, programs, and regulations needed to implement the Albina Community Plan and Neighborhood Plans are a starting point. Implementation leaders, through their listings in the Action Charts, demonstrate their interest and support for the Albina Community Plan and Neighborhood Plans with the understanding that future circumstances, resource capabilities, and plan performance may require further refinement, replacement, or substitution of existing Action Chart items and timelines.

BE IT FURTHER RESOLVED by the Council of the City of Portland, a municipal corporation of the State of Oregon that the City Council acknowledges its role as a coordinator and implementor of the area revitalization and neighborhood stabilization strategies of the Albina Community Plan and 11 accompanying Neighborhood Plans. The City Council, therefore, amends the Albina Community Plan Policy I Land Use Action Chart to add Action Item LU33 which reads as follows: The Portland City Council shall consider, on an annual basis, the funding of an ongoing monitoring program for the implementation of the Albina Community Plan. Neighborhood and business associations and organizations and service providers shall be involved in the monitoring process. The Portland Bureau of Planning shall be listed as the advocate for the action.

BE IT FURTHER RESOLVED by the Council of the City of Portland, a municipal corporation of the State of Oregon that the City Council amends the Albina Community Plan Policy Community Image and Character Action Chart Item CI33 to read as follows: Review the supplemental compatibility standards and associated handbook over the first two years they are effective and include in this review process neighborhood and business associations and organizations, businesses, property owners and development groups. Identify and correct problems with the standards and handbook that make using either difficult or discourage their use.

BE IT FURTHER RESOLVED by the Council of the City of Portland, a municipal corporation of the State of Oregon that the City Council amends the Albina Community Plan Policy Community Plan Policy 1 Land Use Action Chart to add Action Item LU34 which reads as follows: Review the need for the Off-site Impact Standards for industrial uses in the EX zone within the Albina Community Plan District within 5 to 8 years. The Portland Development Commission is listed as the advocate. The Portland Bureau of Planning is listed as the implementor.

BE IT FURTHER RESOLVED by the Council of the City of Portland, a municipal corporation of the State of Oregon that the City Council amends the Albina Community Plan Policy Community Plan Policy 1 Land Use Action Chart to add Action Item LU35 which reads as follows: Create and publish a brochure which explains the Off-site Impact Standards for industrial uses in the EX zone within the Albina Community Plan District. Portland Development Commission is listed as an advocate. The Portland Bureau of Planning is listed as the implementor.

BE IT FURTHER RESOLVED by the Council of the City of Portland, a municipal corporation of the State of Oregon that the City Council amends the Eliot Neighborhood Plan Policy 11 Action Chart to add Action Item SE7 which reads as follows: Establish residential and mixed use portions of Southern Eliot as distressed areas making them eligible for ten-year property tax abatements for new construction and rehabilitation.

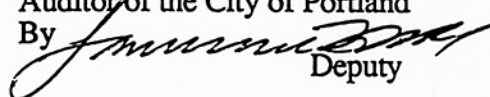
BE IT FURTHER RESOLVED by the Council of the City of Portland, a municipal corporation of the State of Oregon that the City Council authorizes and directs the Bureau of Planning staff to make minor changes and corrections to the action charts in the Albina Community Plan and accompanying Neighborhood Plans to correct typographical errors, ensure parallel construction and to reflect changes in circumstances since the original drafting of an action such as an action having been completed or the establishment of a program which accomplishes the action but in a slightly different manner than is stated in the Plans.

Adopted by the Council, JUL 28 1993

Mayor Vera Katz
CGA
July 12, 1993

BARBARA CLARK
Auditor of the City of Portland

By


Deputy

Piedmont Neighborhood Plan

Action Chart 1: Housing

#	Action Items	Time				Implementors
		Adopted With Plan	On-Going	Next 5 Yrs	6 to 20 Yrs	
	PROJECTS					
H1	Present PNA awards for well-maintained and trouble-free rentals.			X		PNA
H2 *	Conduct a workshop for first time home buyers which promotes the Piedmont Neighborhood.		X			PNA, PDC, BCD, RE, PVT
H3	Hold periodic events, such as Piedmont Pride Days, that promote Piedmont as a "good place to call home".		X			PNA, BCD
	PROGRAMS					
H4 *	Hold joint landlord training sessions with Piedmont and its surrounding neighborhood associations.		X			PPB, PNA, WNA, HNA, KNA
H5	Meet with local real estate agents to increase their awareness of the positive aspects of the neighborhood and to inform them of the activities of PNA.		X			PNA, RE
H6	Establish an ongoing program that identifies and welcomes new home owners, tenants, and landlords to the neighborhood.		X			PNA
H7	Maintain an updated listing of houses on the market in the Piedmont Neighborhood.			X		PNA, RE
H8	Establish a Publicity Chair on the PNA Board that will promote the neighborhood.			X		PNA
	REGULATIONS					
H9 *	Identify and report landlords who violate City of Portland Codes, particularly building code standards and garbage removal requirements.			X		BOB, BOP, PNA
H10 *	Establish design review along Martin Luther King Jr. Boulevard to assure that all new development is compatible with adjacent lower density residential and historic areas.	X				BOP, PNA
H11 *	Consider zoning mechanisms that ensure future affordable housing options.	X				BOP
H12 *	Zone portions of Martin Luther King Jr. Boulevard to allow full-block multi-dwelling and mixed commercial development with minimal impact to existing housing stock.	X				BOP

***This topic is also covered in the Albina Community District Plan.**

Note: Action Charts were approved by Portland City Council by resolution. They are a starting place. Actions with an identified implementor were adopted with the understanding that some will need to be adjusted and others replaced with more feasible proposals. Identification of an implementor for an action is an expression of interest and support with the understanding that circumstances will affect the implementation leader's ability to take action. Actions with a listed advocate rather than an implementor are included in recognition of the importance of continued discussion of these issues. Such actions will become part of this plan only when an implementor has agreed to support them.



Action Chart 2: The Emerald Neighborhood

#	Action Items	Time				Implementors
		Adopted With Plan	On-Going	Next 5 Yrs	6 to 20 Yrs	
	PROJECTS					
E1 *	Create a pedestrian/bike access to the Columbia Slough from the Piedmont Neighborhood that ties into the 40 mile loop and the city-wide bike system.				X	ATP
E2 *	Develop a self-guided nature trail along the Columbia Slough as part of the 40 mile loop interpretive signs in Braille and a portion of the trail paved for handicap access.				X	BES, PNA, PARKS
E3 *	Develop a boat landing on the Columbia Slough for non-motorized vehicles.				X	PARKS
E4	Establish annual Earth Week clean-up of the Columbia Slough.			X		PNA, BES,
E5	Repair the Peninsula Park Community Center swimming pool. Improve handicap access.			X		PARKS, BCD
E6	Site a public recreational facility at the Holy Redeemer School.				X	HRS
E7*	Establish annual neighborhood clean-up day.		X			PNA, BES
E8*	Support the expansion of curbside recycling and encourage convenient recycling drop off sites for those materials not included in the curbside program.		X			PNA, BES
	PROGRAMS					
E9	Implement an alley maintenance and cleaning program.			X		PDOT
E10 *	Offer recycling education programs to neighborhood residents, businesses, and schools.			X		METRO, PNA, PPS, BES
E11	Provide supervised parks and recreation after school programs and summer programs for neighborhood youth in the Piedmont Neighborhood.		X			PARKS, PNA
E12	Organize and train volunteers to help maintain Peninsula Park's rose garden. and flower beds.		X			PARKS, PNA
E13	Continue a summer concert series in Peninsula Park.		X			PARKS, BCD, PNA
E14 *	Identify and plant street trees where needed throughout the neighborhood. (see urban design map)		X			CF, PNA
	REGULATIONS					
E15 *	Monitor trash removal practices at rentals and businesses to ensure compliance with existing ordinances.			X		BOB, PNA

*This topic is also covered in the Albina Community District Plan.

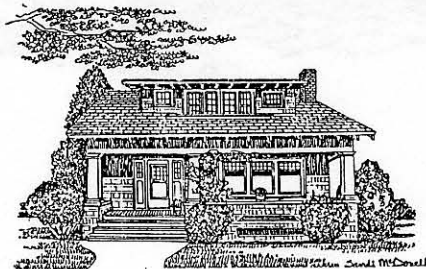
Note: Action Charts were approved by Portland City Council by resolution. They are a starting place. Actions with an identified implementor were adopted with the understanding that some will need to be adjusted and others replaced with more feasible proposals. Identification of an implementor for an action is an expression of interest and support with the understanding that circumstances will affect the implementation leader's ability to take action. Actions with a listed advocate rather than an implementor are included in recognition of the importance of continued discussion of these issues. Such actions will become part of this plan only when an implementor has agreed to support them.

Action Chart 3: Historic Preservation

#	Action Items	Time				Implementors
		Adopted With Plan	On-Going	Next 5 Yrs	6 to 20 Yrs	
	PROJECTS					
HP1 *	Update the City's Historic Resources Inventory for the Piedmont Neighborhood.		X			PNA, BOP
HP2 *	Develop a packet of historic preservation information to distribute to interested residents.			X		PNA, BOP, HPLO
HP3 *	Create and distribute a brochure for a self-guided walking tour through the Piedmont Neighborhood.		X			PNA, BCD
HP4	Form a Piedmont Historical Society to promote historic preservation and act as a liaison to others involved in historic preservation efforts.			X		PNA, OHS
HP5	Develop an emblem that can be used to identify the Piedmont Historic Design Zone.			X		PNA
HP6	Develop a pamphlet on the Columbia Pioneer Cemetery with a brief history and inventory.			X		PNA, OHS, BOP, MC
	PROGRAMS					
HP7 *	Establish a collection of historic preservation information and resources that is easily accessible to residents interested in researching their house or neighborhood.			X		PNA
HP8	Establish fund raising activities to help support historic preservation in Piedmont.		X			PNA
HP9	Improve the level of maintenance of the Columbia Pioneer Cemetery.			X		MC, PNA
HP10	Establish an annual Piedmont Christmas Candlelight Tour of Homes.			X		PNA
	REGULATIONS					
HP11	Establish a Piedmont Historic Design Zone south of Portland Boulevard in the Piedmont Neighborhood.	X				BOP, PNA, KNA HNA, HLC
HP12 *	Establish and participate in a single Albina Historic District Advisory Board.			X		PNA, BOP, HLC
HP13 *	Develop and adopt design guidelines for the Piedmont Historic Design Zone.	X				BOP, PNA

*This topic is also covered in the Albina Community District Plan.

Note: Action Charts were approved by Portland City Council by resolution. They are a starting place. Actions with an identified implementor were adopted with the understanding that some will need to be adjusted and others replaced with more feasible proposals. Identification of an implementor for an action is an expression of interest and support with the understanding that circumstances will affect the implementation leader's ability to take action. Actions with a listed advocate rather than an implementor are included in recognition of the importance of continued discussion of these issues. Such actions will become part of this plan only when an implementor has agreed to support them.

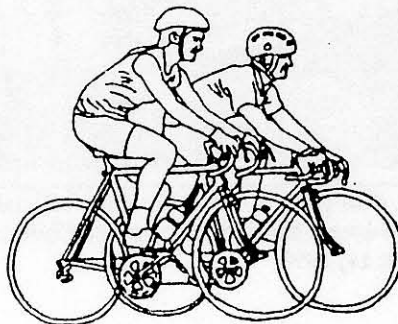


Action Chart 4: Transportation

#	Action Items	Time				Implementors
		Adopted With Plan	On-Going	Next 5 Yrs	6 to 20 Yrs	
	PROJECTS					
T1	Create an additional traffic lane or other traffic device on Portland Boulevard at the intersection of Vancouver Avenue that allows through traffic to merge safely.			X		PDOT
T2 *	Create pedestrian and bicycle paths along designated routes throughout the Piedmont Neighborhood that link with the Albina community and destination points beyond.				X	ATP, PDOT
T3 *	Determine where public transportation services have been eliminated in the neighborhood and consider replacing with bus service or future light rail lines.			X		TM, PDOT, PNA
T4	Explore the feasibility of using the Neighborhood Stop Plan, a pilot program of PDOT, to conduct a comprehensive study of the stop sign placement throughout the Piedmont Neighborhood.			X		PDOT, PNA
T5	Continue support for the Neighborhood Traffic Management Program for Ainsworth and Dekum Streets (local service streets) in the Piedmont Neighborhood.			X		PDOT, PNA
T6	Continue to recommend Portland Boulevard and Vancouver Avenue (neighborhood collector streets) in the Piedmont Neighborhood as candidates for the Collector Recovery Program.				X	PDOT, PNA
T7 *	Create more efficient bus service to the Columbia Corridor and Swan Island Industrial Areas from the Piedmont Neighborhood.			X		TM, PDOT
	PROGRAMS					
T8	Identify and establish Limited Improvement Districts where property owners want to pave unimproved streets.				X	PDOT, BOP
	REGULATIONS					
T9 *	Determine what neighborhood streets should prohibit truck through traffic, post signs, and enforce regulation.			X		PDOT, PPB, PNA

*This topic is also covered in the Albina Community District Plan.

Note: Action Charts were approved by Portland City Council by resolution. They are a starting place. Actions with an identified implementor were adopted with the understanding that some will need to be adjusted and others replaced with more feasible proposals. Identification of an implementor for an action is an expression of interest and support with the understanding that circumstances will affect the implementation leader's ability to take action. Actions with a listed advocate rather than an implementor are included in recognition of the importance of continued discussion of these issues. Such actions will become part of this plan only when an implementor has agreed to support them.

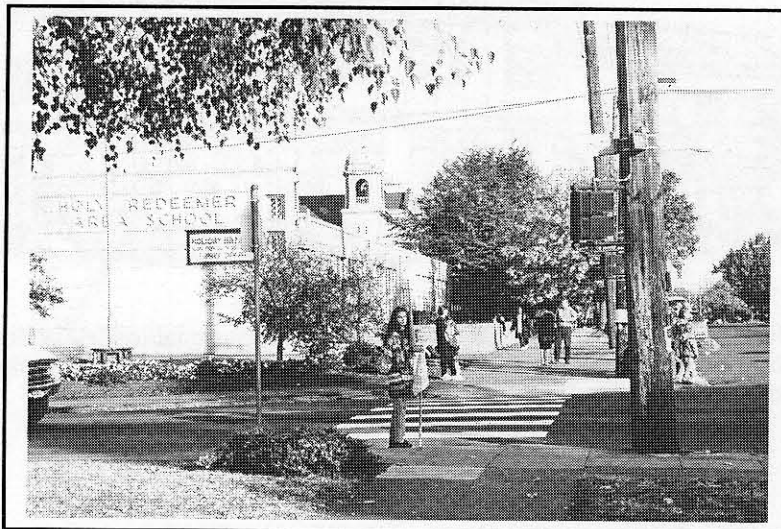


Action Chart 5: Community Development

#	Action Items	Time				Implementors
		Adopted With Plan	On-Going	Next 5 Yrs	6 to 20 Yrs	
	PROJECTS					
CD1	Reconfigure the public elementary school boundaries to include as much of Piedmont as possible in one district.				X	PPS
CD2	Develop and implement an action plan to alleviate the overcrowding problems in Ockley Green, Piedmont's middle school.			X		PPS
CD3 *	Improve system for forecasting enrollment projections and implement strategies to maximize school resources while preventing future overcrowding problems.		X			PPS
CD4	Locate a public library book drop within the Piedmont Neighborhood.			X		MC, PNA
CD5 *	Conduct neighborhood block parties as a vehicle for neighborhood-based outreach.		X			PNA, NEC, PPB
CD6	Prepare a community development plan to identify special needs of Piedmont residents and implement an action plan targeted to those needs.			X		PNA, NEC
	PROGRAMS					
CD7 *	Develop a list of resources for Piedmont senior citizens needing assistance.			X		PNA
CD8 *	Establish a liaison between community and business groups operating in the Piedmont Neighborhood.			X		PNA, NEBA, CCA

*This topic is also covered in the Albina Community District Plan.

Note: Action Charts were approved by Portland City Council by resolution. They are a starting place. Actions with an identified implementor were adopted with the understanding that some will need to be adjusted and others replaced with more feasible proposals. Identification of an implementor for an action is an expression of interest and support with the understanding that circumstances will affect the implementation leader's ability to take action. Actions with a listed advocate rather than an implementor are included in recognition of the importance of continued discussion of these issues. Such actions will become part of this plan only when an implementor has agreed to support them.



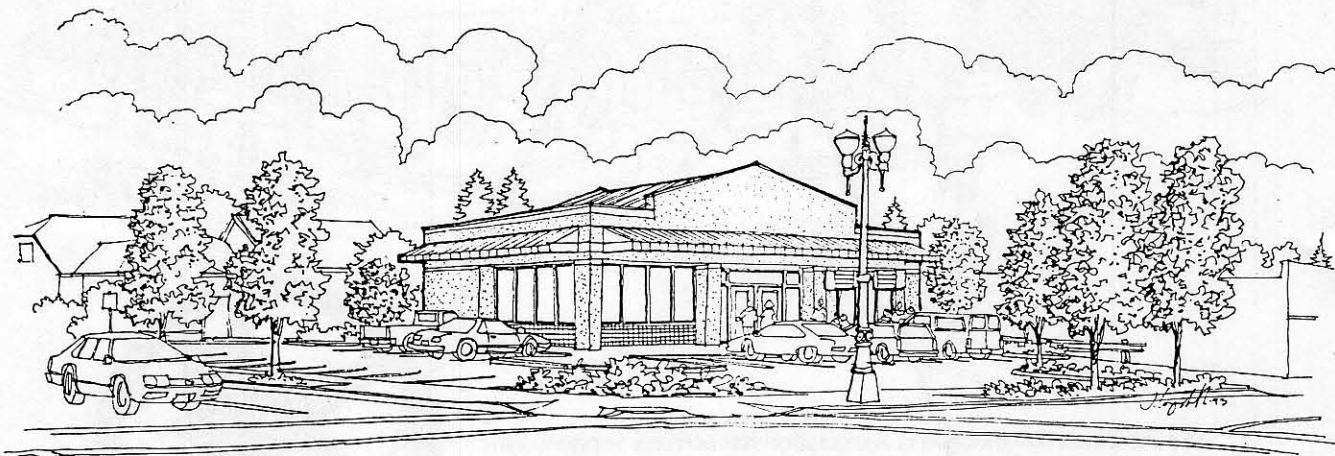
Holy Redeemer Elementary School, at Vancouver Avenue and Portland Boulevard, is located in the heart of the Piedmont Neighborhood.

Action Chart 6: Business Growth & Development

#	Action Items	Time				Implementors
		Adopted With Plan	On-Going	Next 5 Yrs	6 to 20 Yrs	
	PROJECTS					
BG1	Establish surface parking facilities along Martin Luther King Jr. Boulevard.				X	BCD
	PROGRAMS					
BG2	Conduct land use review training sessions for the newly appointed PNA board members.			X		BOP, PNA
BG3	Conduct training sessions for small business owners located in and around Piedmont that address security and maintenance issues.			X		PNA, PPB,
	REGULATIONS					
BG4 *	Zone areas along Martin Luther King Jr. Boulevard in the Piedmont Neighborhood for mixed commercial.	X				BOP
BG5 *	Establish design review along Martin Luther King Jr. Boulevard.	X				BOP
BG6	Establish Piedmont as an Impact Area for liquor licensing.		X			PPB, OLCC, PNA

*This topic is also covered in the Albina Community District Plan.

Note: Action Charts were approved by Portland City Council by resolution. They are a starting place. Actions with an identified implementor were adopted with the understanding that some will need to be adjusted and others replaced with more feasible proposals. Identification of an implementor for an action is an expression of interest and support with the understanding that circumstances will affect the implementation leader's ability to take action. Actions with a listed advocate rather than an implementor are included in recognition of the importance of continued discussion of these issues. Such actions will become part of this plan only when an implementor has agreed to support them.



This drawing of potential commercial development along Martin Luther King Jr. Boulevard. The building's size and shape is compatible with the neighborhood to the west. (Drawing courtesy of the Portland Development Commission)

Action Chart 7: Livability & Public Safety

#	Actions Items	Time				Implementors
		Adopted With Plan	On-Going	Next 5 Yrs	6 to 20 Yrs	
	PROJECTS					
LS1	Remove gang graffiti from public view.			X		PNA, NEBA
LS2	Address the problem of crime associated with the footbridge over the I-5 freeway at Bryant Street.			X		PPB, PNA
	PROGRAMS					
LS3 *	Establish a network of Neighborhood Watch blocks.		X			CPO, PNA
LS4	Establish a program which makes youth aware of designated block homes.			X		PNA, PPB, CPO
LS5	Maintain and expand Piedmont's Foot Patrol.		X			PNA, PPB, CPO
LS6 *	Coordinate training sessions with the Gang Enforcement Team for neighborhood residents and landlords.		X			PNA, PPB, CPO
LS7 *	Coordinate training sessions with the Drug and Vice Squad for neighborhood residents and landlords.		X			PNA, PPB, CPO
LS8 *	Establish horse or bike patrols in Peninsula Park and along the Columbia Slough trail.				X	PNA, PPB
	REGULATIONS					
LS9	Require all commercial and industrial buildings to have outside lighting and encourage its use at night.			X		BOP, NEBA
LS10	Require all vacant commercial and industrial buildings to have night time lighting.			X		BOP, NEBA, PPB

*This topic is also covered in the Albina Community District Plan.

Note: Action Charts were approved by Portland City Council by resolution. They are a starting place. Actions with an identified implementor were adopted with the understanding that some will need to be adjusted and others replaced with more feasible proposals. Identification of an implementor for an action is an expression of interest and support with the understanding that circumstances will affect the implementation leader's ability to take action. Actions with a listed advocate rather than an implementor are included in recognition of the importance of continued discussion of these issues. Such actions will become part of this plan only when an implementor has agreed to support them.



The Piedmont Neighborhood needs to be safe place for everyone.

Standard Abbreviations of Organizations in Action Charts

ATP	Alternative Transportation Program
BCD	Bureau of Community Development
BES	Bureau of Environmental Services
BL	Bureau of Licenses
BOB	Bureau of Buildings
BOP	Bureau of Planning
CDC	Community Development Corporation
CF	City Forester
CPO	Crime Prevention Office
HAP	Housing Authority of Portland
HLC	Historical Landmarks Commission
HNA	Humboldt Neighborhood Association
HPLO	Historic Preservation League of Oregon
HRS	Holy Redeemer School
KNA	King Neighborhood Association
MC	Multnomah County
METRO	Metropolitan Service District
NA	Neighborhood Associations
NEBA	North/Northeast Business Association
NEC	Northeast Coalition of Neighborhoods
NECDC	Northeast Community Development Corporation
NPO	Nonprofit Organization
ODOT	Oregon Department of Transportation
OHRB	State of Oregon Human Resources Bureau
OHS	Oregon Historical Society
OLCC	Oregon Liquor Control Commission
PARKS	Bureau of Parks and Recreation
PDC	Portland Development Commission
PNA	Piedmont Neighborhood Association
PDOT	Portland Office of Transportation
PPB	Portland Police Bureau
PPS	Portland Public Schools
PVT	Private sector (including businesses and property owners)
RE	Local Realtors
TM	Tri-County Metropolitan Transit District