

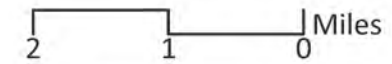
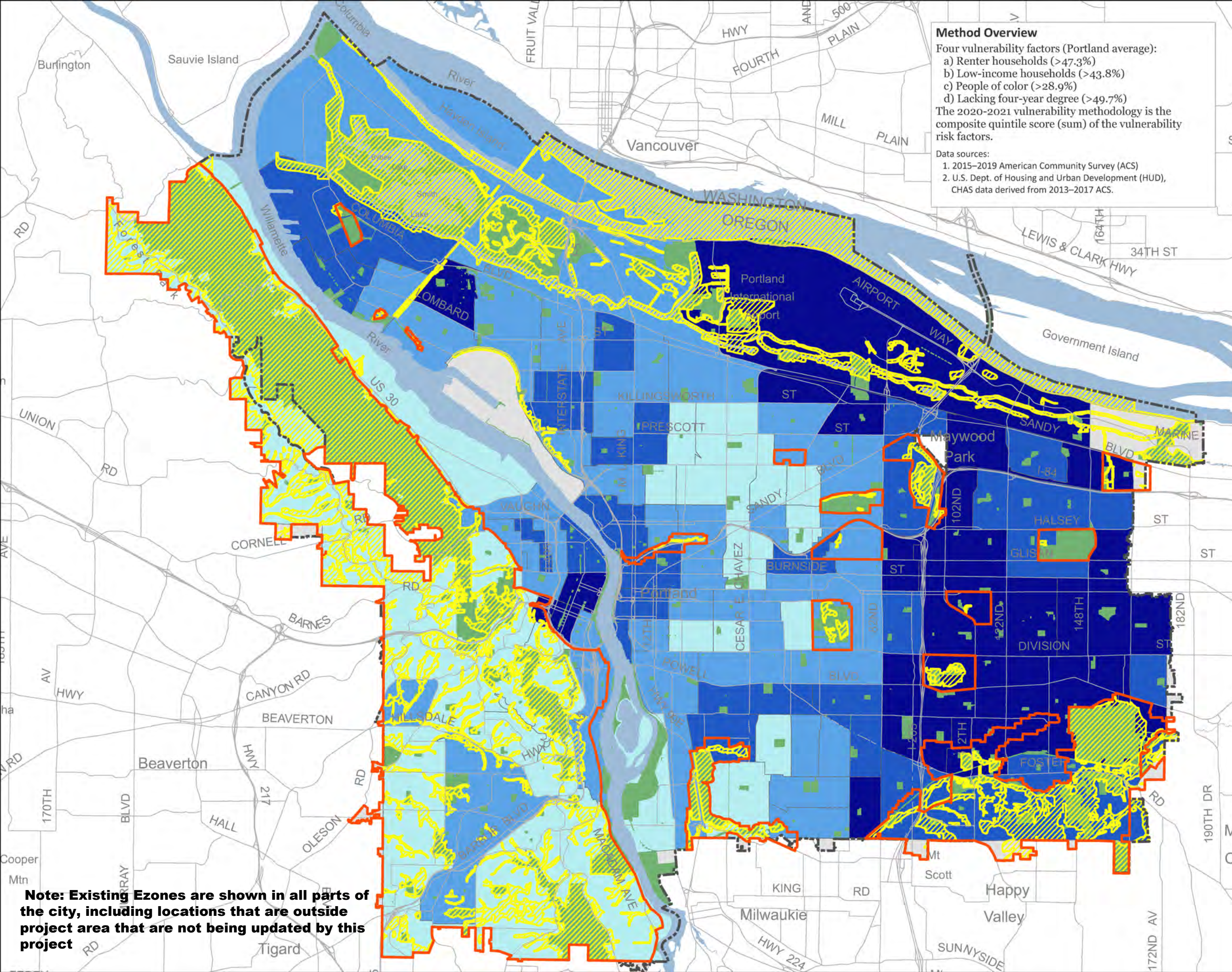
# Ezone Map Correction Project Vulnerability/Risk

## Existing Environmental Zones

### Legend

- Portland Urban Service Boundary
  - Ezone Project Area
  - Existing Ezones
  - Parks and/or Natural Areas
- Economic Vulnerability Risk Assessment**
- 13 - 16 (most vulnerable)
  - 10 - 12
  - 5 - 9
  - 0 - 4 (least vulnerable)

**Method Overview**  
 Four vulnerability factors (Portland average):  
 a) Renter households (>47.3%)  
 b) Low-income households (>43.8%)  
 c) People of color (>28.9%)  
 d) Lacking four-year degree (>49.7%)  
 The 2020-2021 vulnerability methodology is the composite quintile score (sum) of the vulnerability risk factors.  
 Data sources:  
 1. 2015-2019 American Community Survey (ACS)  
 2. U.S. Dept. of Housing and Urban Development (HUD), CHAS data derived from 2013-2017 ACS.



The information on this map was derived from City of Portland GIS databases. Care was taken in the creation of this map but it is provided "as is". The City of Portland cannot accept any responsibility for error, omissions or positional accuracy.

The City of Portland ensures meaningful access to city programs, services, and activities to comply with Civil Rights Title VI and ADA Title II laws and reasonably provides: translation, interpretation, modifications, accommodations, alternative formats, auxiliary aids and services. To request these services, contact 503-823-7700, City TTY 503-823-6868, Relay Service: 711.



THE BUREAU OF **PLANNING & SUSTAINABILITY**

**Note: Existing Ezones are shown in all parts of the city, including locations that are outside project area that are not being updated by this project**

# Ezone Map Correction Project Vulnerability/Risk

## Proposed Environmental Zones

### Method Overview

Four vulnerability factors (Portland average):

- a) Renter households (>47.3%)
- b) Low-income households (>43.8%)
- c) People of color (>28.9%)
- d) Lacking four-year degree (>49.7%)

The 2020-2021 vulnerability methodology is the composite quintile score (sum) of the vulnerability risk factors.

Data sources:

- 1. 2015-2019 American Community Survey (ACS)
- 2. U.S. Dept. of Housing and Urban Development (HUD), CHAS data derived from 2013-2017 ACS.

### Legend

--- Portland Urban Service Boundary

▭ Ezone Project Area

▨ Existing Ezones

▨ Proposed Ezones

▭ Parks and/or Natural Areas

### Economic Vulnerability Risk Assessment

■ 13 - 16 (most vulnerable)

■ 10 - 12

■ 5 - 9

■ 0 - 4 (least vulnerable)

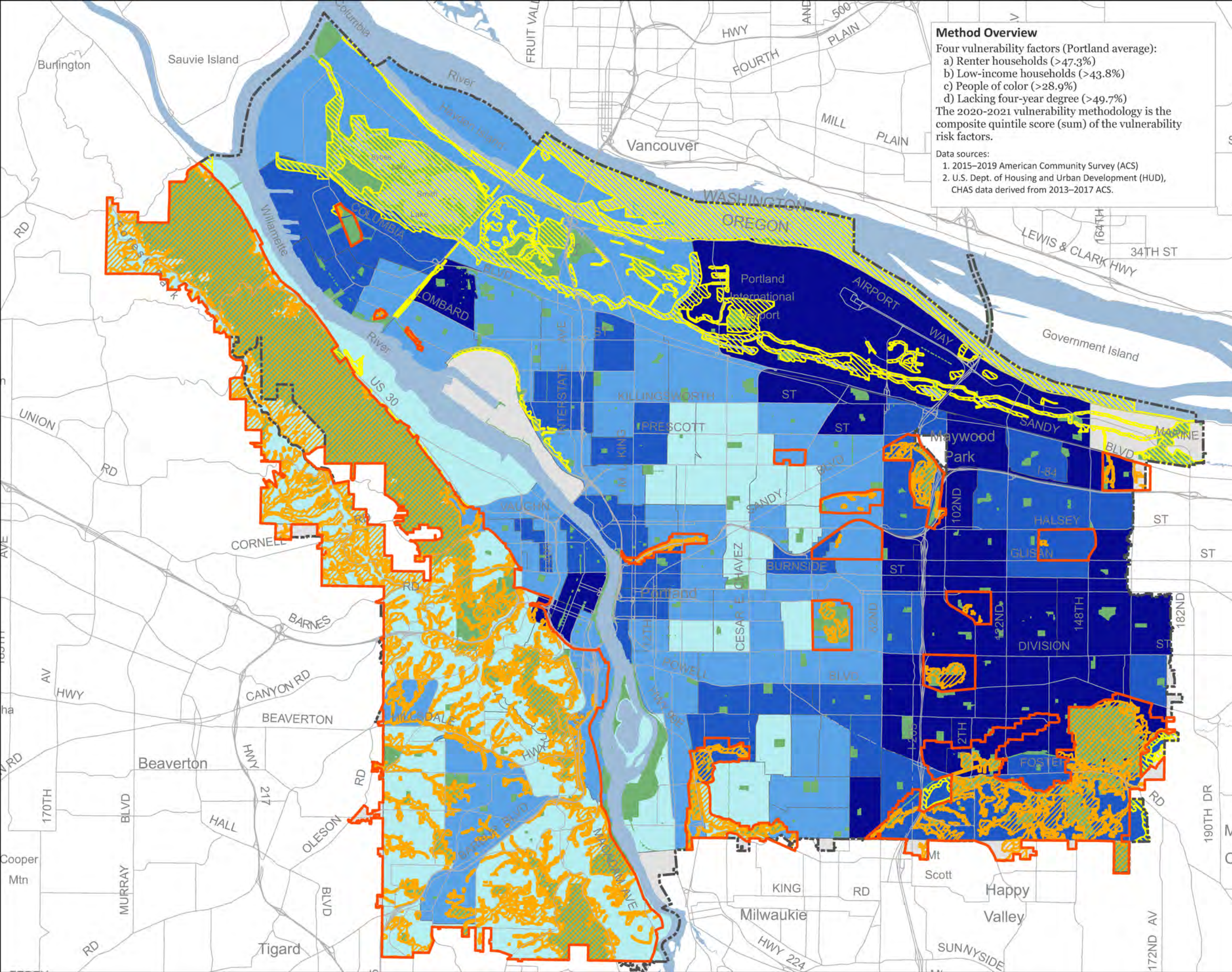


The information on this map was derived from City of Portland GIS databases. Care was taken in the creation of this map but it is provided "as is". The City of Portland cannot accept any responsibility for error, omissions or positional accuracy.

The City of Portland ensures meaningful access to city programs, services, and activities to comply with Civil Rights Title VI and ADA Title II laws and reasonably provides: translation, interpretation, modifications, accommodations, alternative formats, auxiliary aids and services. To request these services, contact 503-823-7700, City TTY 503-823-6868, Relay Service: 711.



THE BUREAU OF **PLANNING & SUSTAINABILITY**



# Ezone Map Correction Project Vulnerability/Risk

Census Tract 21 & 23.03  
Composite Score = 11

### Method Overview

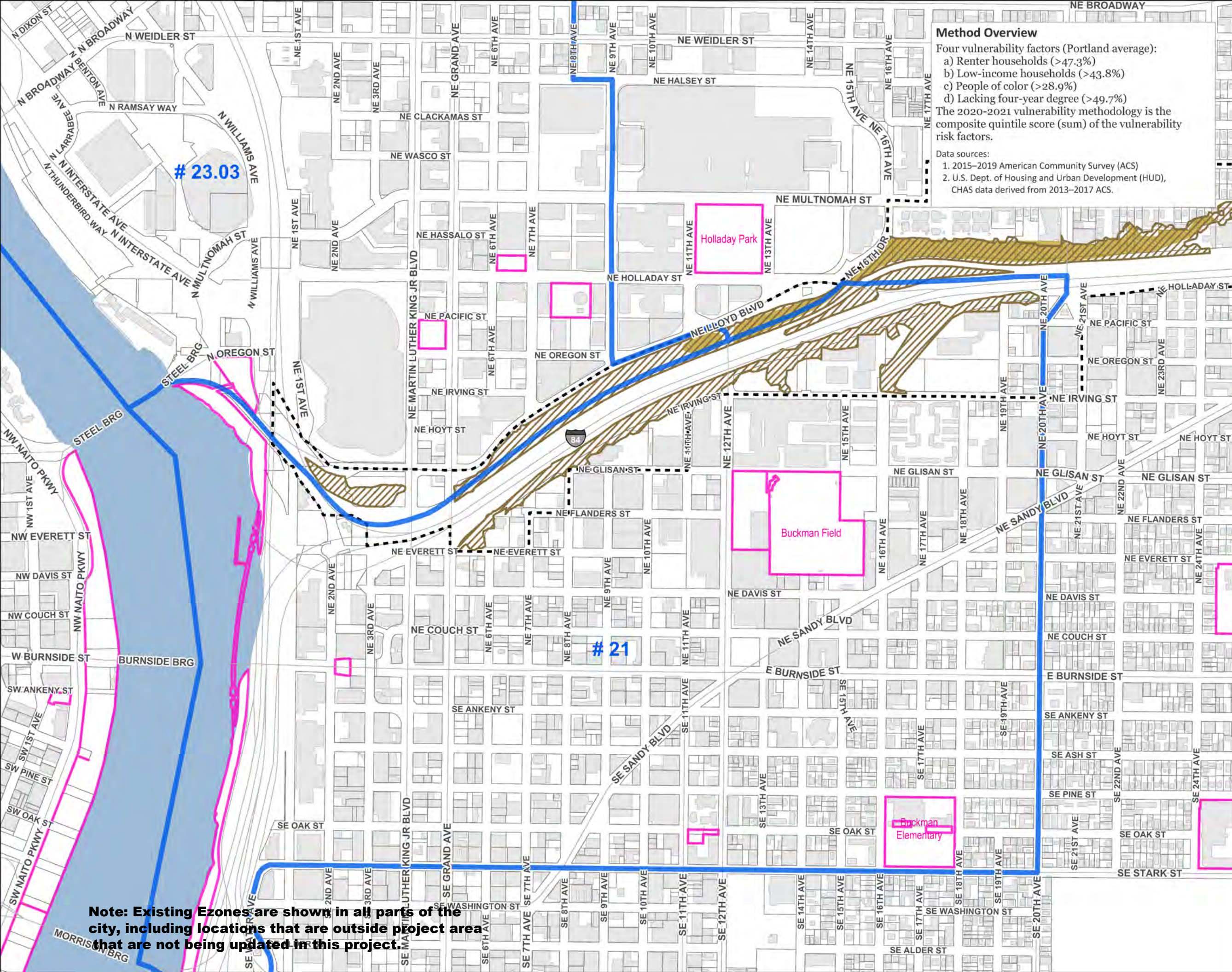
Four vulnerability factors (Portland average):

- a) Renter households (>47.3%)
- b) Low-income households (>43.8%)
- c) People of color (>28.9%)
- d) Lacking four-year degree (>49.7%)

The 2020-2021 vulnerability methodology is the composite quintile score (sum) of the vulnerability risk factors.

Data sources:

1. 2015-2019 American Community Survey (ACS)
2. U.S. Dept. of Housing and Urban Development (HUD), CHAS data derived from 2013-2017 ACS.



### Legend

Portland Urban Service Boundary

Vulnerability Risk Score >= 10

Ezone Project Area

Parks / Open Space

Wetlands

Open Channel Streams

Proposed Overlay Zones

Conservation (c) Overlay Zone

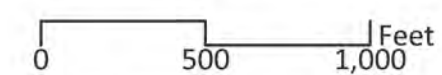
Protection (p) Overlay Zone

Existing Environmental Zones

Conservation (c) Overlay Zone

Protection (p) Overlay Zone

Building Footprints



The information on this map was derived from City of Portland GIS databases. Care was taken in the creation of this map but it is provided "as is". The City of Portland cannot accept any responsibility for error, omissions or positional accuracy.

The City of Portland ensures meaningful access to city programs, services, and activities to comply with Civil Rights Title VI and ADA Title II laws and reasonably provides: translation, interpretation, modifications, accommodations, alternative formats, auxiliary aids and services. To request these services, contact 503-823-7700, City TTY 503-823-6868, Relay Service: 711.



THE BUREAU OF **PLANNING & SUSTAINABILITY**

**Note: Existing Ezones are shown in all parts of the city, including locations that are outside project area that are not being updated in this project.**

# Ezone Map Correction Project Vulnerability/Risk

## Census Tract 29.03 & 78 Composite Score = 10

### Method Overview

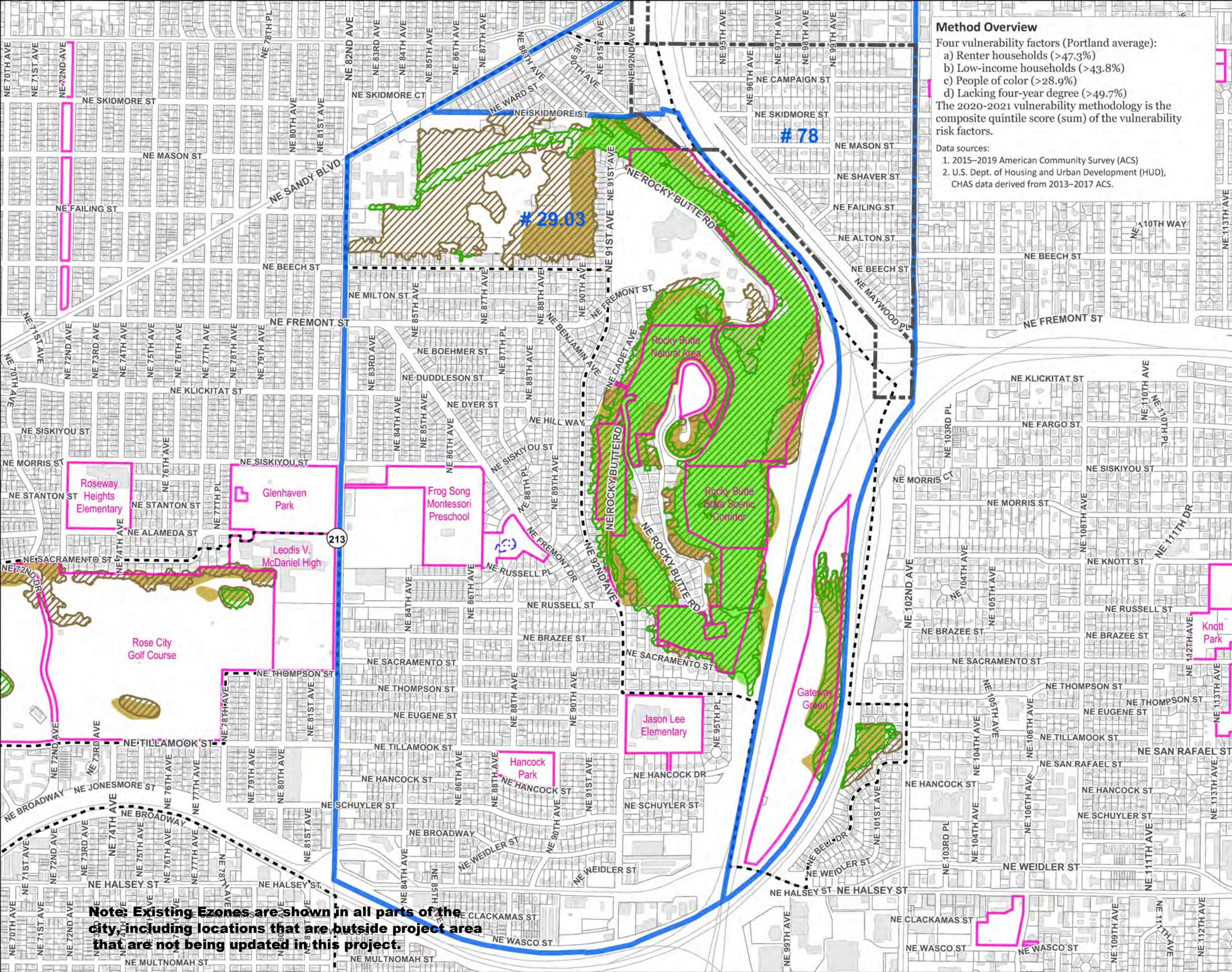
Four vulnerability factors (Portland average):

- a) Renter households (>47.3%)
- b) Low-income households (>43.8%)
- c) People of color (>28.9%)
- d) Lacking four-year degree (>49.7%)

The 2020-2021 vulnerability methodology is the composite quintile score (sum) of the vulnerability risk factors.

Data sources:

1. 2015-2019 American Community Survey (ACS)
2. U.S. Dept. of Housing and Urban Development (HUD), CHAS data derived from 2013-2017 ACS.



### Legend

— Portland Urban Service Boundary

■ Vulnerability Risk Score >= 10

⋯ Ezone Project Area

□ Parks / Open Space

▨ Wetlands

⋯ Open Channel Streams

Proposed Overlay Zones

▨ Conservation (c) Overlay Zone

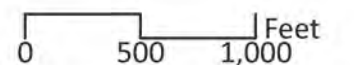
▨ Protection (p) Overlay Zone

Existing Environmental Zones

▨ Conservation (c) Overlay Zone

▨ Protection (p) Overlay Zone

□ Building Footprints



The information on this map was derived from City of Portland GIS databases. Care was taken in the creation of this map but it is provided "as is". The City of Portland cannot accept any responsibility for error, omissions or positional accuracy.

The City of Portland ensures meaningful access to city programs, services, and activities to comply with Civil Rights Title VI and ADA Title II laws and reasonably provides: translation, interpretation, modifications, accommodations, alternative formats, auxiliary aids and services. To request these services, contact 503-823-7700, City TTY 503-823-6868, Relay Service: 711.



## THE BUREAU OF PLANNING & SUSTAINABILITY

**Note: Existing Ezones are shown in all parts of the city, including locations that are outside project area that are not being updated in this project.**

# Ezone Map Correction Project

## Vulnerability/Risk

Census Tract 3.01  
Composite Score = 10

### Method Overview

Four vulnerability factors (Portland average):

- a) Renter households (>47.3%)
- b) Low-income households (>43.8%)
- c) People of color (>28.9%)
- d) Lacking four-year degree (>49.7%)

The 2020-2021 vulnerability methodology is the composite quintile score (sum) of the vulnerability risk factors.

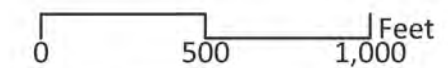
Data sources:

1. 2015-2019 American Community Survey (ACS)
2. U.S. Dept. of Housing and Urban Development (HUD), CHAS data derived from 2013-2017 ACS.

# 3.01

### Legend

- Portland Urban Service Boundary
- ▭ Vulnerability Risk Score >= 10
- - - Ezone Project Area
- ▭ Parks / Open Space
- ▭ Wetlands
- - - Open Channel Streams
- Proposed Overlay Zones
  - ▨ Conservation (c) Overlay Zone
  - ▨ Protection (p) Overlay Zone
- Existing Environmental Zones
  - ▨ Conservation (c) Overlay Zone
  - ▨ Protection (p) Overlay Zone
- ▭ Building Footprints



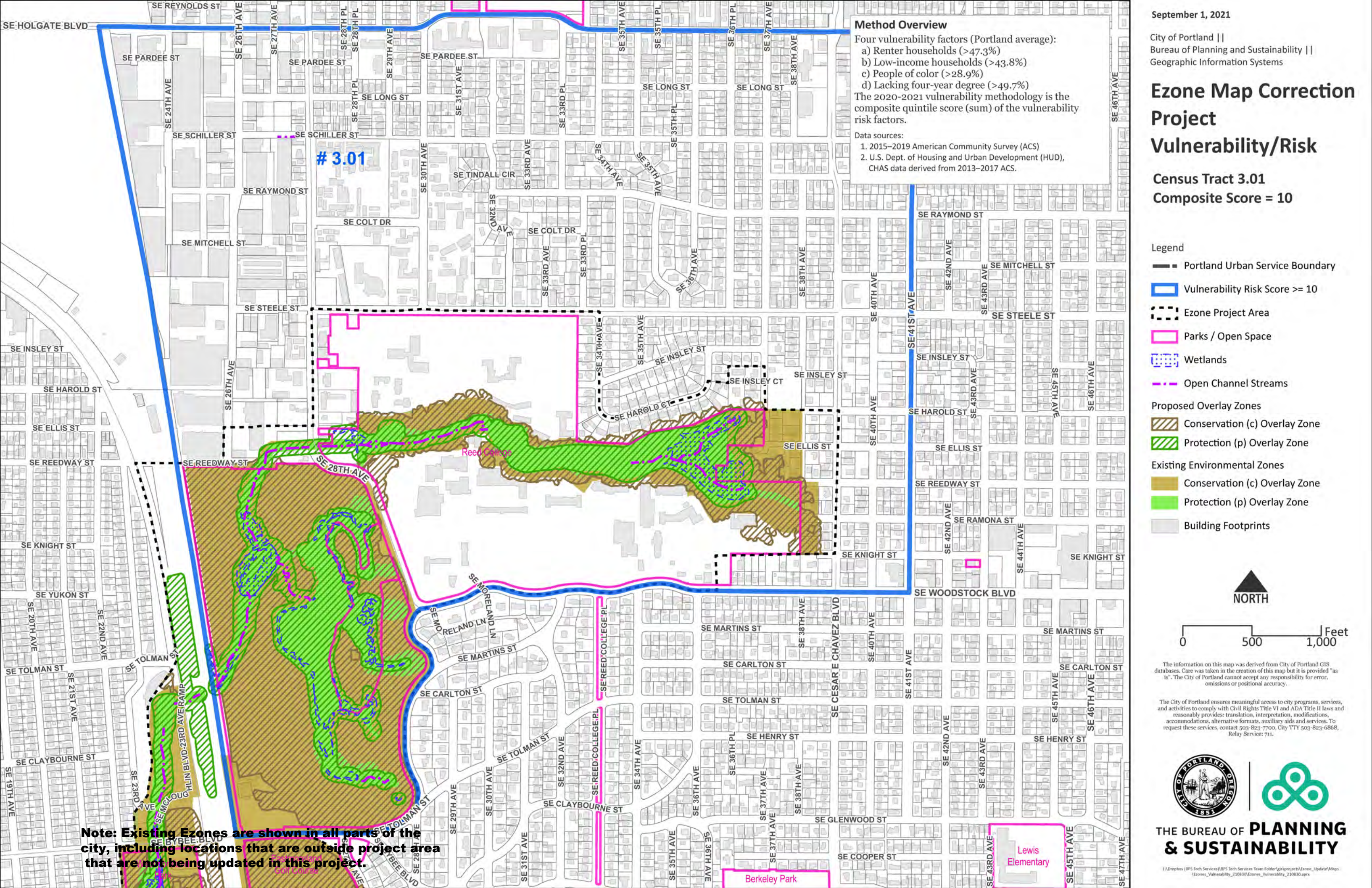
The information on this map was derived from City of Portland GIS databases. Care was taken in the creation of this map but it is provided "as is". The City of Portland cannot accept any responsibility for error, omissions or positional accuracy.

The City of Portland ensures meaningful access to city programs, services, and activities to comply with Civil Rights Title VI and ADA Title II laws and reasonably provides: translation, interpretation, modifications, accommodations, alternative formats, auxiliary aids and services. To request these services, contact 503-823-7700, City TTY 503-823-6868, Relay Service: 711.



## THE BUREAU OF PLANNING & SUSTAINABILITY

**Note: Existing Ezones are shown in all parts of the city, including locations that are outside project area that are not being updated in this project.**



# Ezone Map Correction Project Vulnerability/Risk

Census Tract 41.01  
Composite Score = 11

### Method Overview

Four vulnerability factors (Portland average):

- a) Renter households (>47.3%)
- b) Low-income households (>43.8%)
- c) People of color (>28.9%)
- d) Lacking four-year degree (>49.7%)

The 2020-2021 vulnerability methodology is the composite quintile score (sum) of the vulnerability risk factors.

Data sources:

- 1. 2015-2019 American Community Survey (ACS)
- 2. U.S. Dept. of Housing and Urban Development (HUD), CHAS data derived from 2013-2017 ACS.

Smit  
Bybee  
Natur

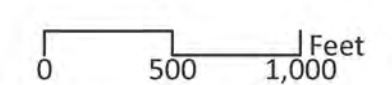
# 41.01

Minney Park

Pier Park

### Legend

- Portland Urban Service Boundary
- ▭ Vulnerability Risk Score >= 10
- ▭ Ezone Project Area
- ▭ Parks / Open Space
- ▭ Wetlands
- ▭ Open Channel Streams
- Proposed Overlay Zones
  - ▭ Conservation (c) Overlay Zone
  - ▭ Protection (p) Overlay Zone
- Existing Environmental Zones
  - ▭ Conservation (c) Overlay Zone
  - ▭ Protection (p) Overlay Zone
- ▭ Building Footprints



The information on this map was derived from City of Portland GIS databases. Care was taken in the creation of this map but it is provided "as is". The City of Portland cannot accept any responsibility for error, omissions or positional accuracy.

The City of Portland ensures meaningful access to city programs, services, and activities to comply with Civil Rights Title VI and ADA Title II laws and reasonably provides: translation, interpretation, modifications, accommodations, alternative formats, auxiliary aids and services. To request these services, contact 503-823-7700, City TTY 503-823-6868, Relay Service: 711.



THE BUREAU OF **PLANNING & SUSTAINABILITY**

**Note: Existing Ezones are shown in all parts of the city, including locations that are outside project area that are not being updated in this project.**

# Ezone Map Correction Project

## Vulnerability/Risk

Census Tract 55  
Composite Score = 13

### Method Overview

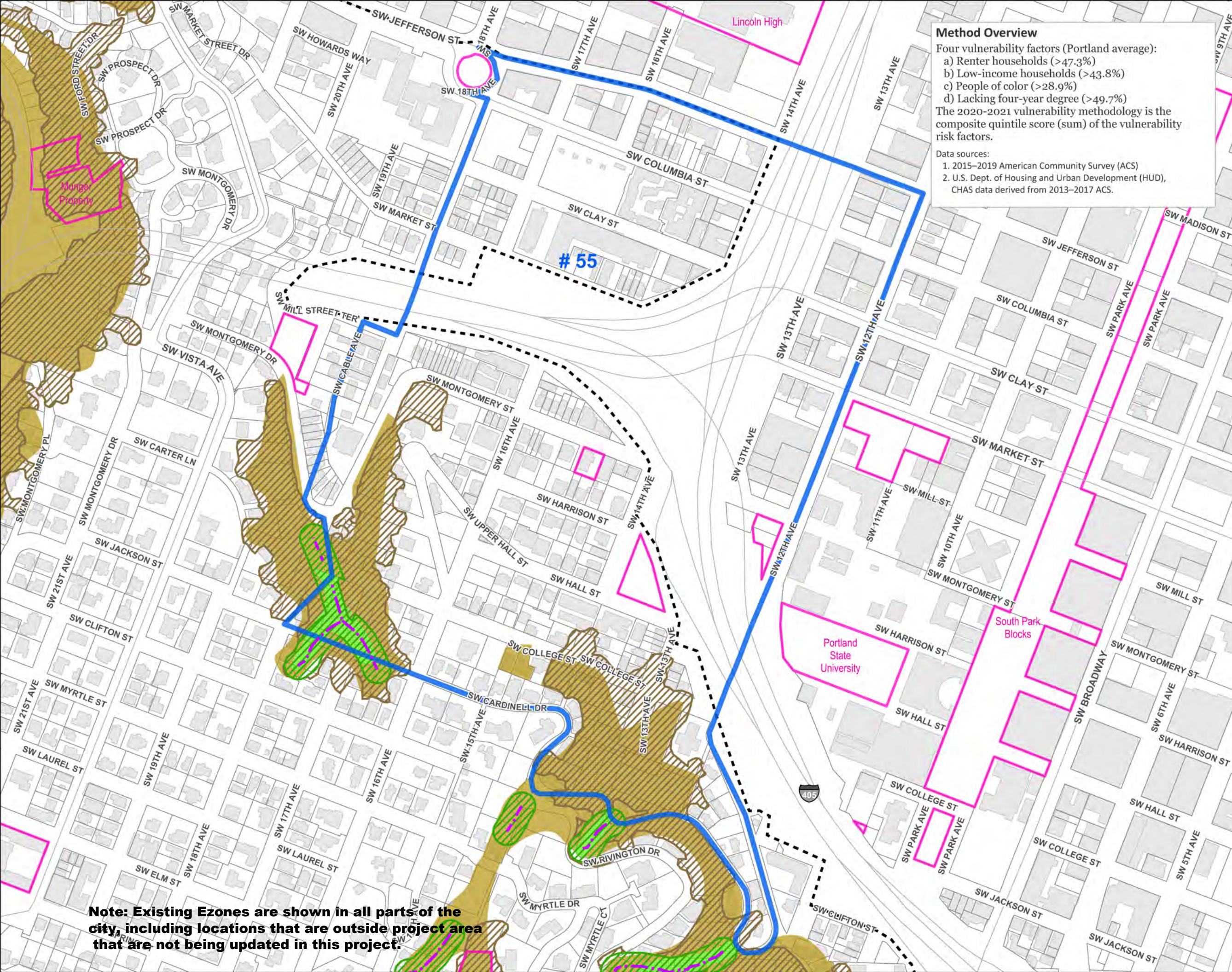
Four vulnerability factors (Portland average):

- a) Renter households (>47.3%)
- b) Low-income households (>43.8%)
- c) People of color (>28.9%)
- d) Lacking four-year degree (>49.7%)

The 2020-2021 vulnerability methodology is the composite quintile score (sum) of the vulnerability risk factors.

Data sources:

- 1. 2015-2019 American Community Survey (ACS)
- 2. U.S. Dept. of Housing and Urban Development (HUD), CHAS data derived from 2013-2017 ACS.



### Legend

— Portland Urban Service Boundary

▭ Vulnerability Risk Score >= 10

▭ Ezone Project Area

▭ Parks / Open Space

▭ Wetlands

▭ Open Channel Streams

### Proposed Overlay Zones

▭ Conservation (c) Overlay Zone

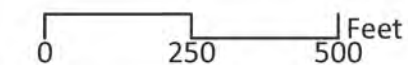
▭ Protection (p) Overlay Zone

### Existing Environmental Zones

▭ Conservation (c) Overlay Zone

▭ Protection (p) Overlay Zone

▭ Building Footprints



The information on this map was derived from City of Portland GIS databases. Care was taken in the creation of this map but it is provided "as is". The City of Portland cannot accept any responsibility for error, omissions or positional accuracy.

The City of Portland ensures meaningful access to city programs, services, and activities to comply with Civil Rights Title VI and ADA Title II laws and reasonably provides: translation, interpretation, modifications, accommodations, alternative formats, auxiliary aids and services. To request these services, contact 503-823-7700, City TTY 503-823-6868, Relay Service: 711.



THE BUREAU OF **PLANNING & SUSTAINABILITY**

**Note: Existing Ezones are shown in all parts of the city, including locations that are outside project area that are not being updated in this project.**

# Ezone Map Correction Project

## Vulnerability/Risk

Census Tract 80.01  
Composite Score = 13

### Method Overview

Four vulnerability factors (Portland average):

- a) Renter households (>47.3%)
- b) Low-income households (>43.8%)
- c) People of color (>28.9%)
- d) Lacking four-year degree (>49.7%)

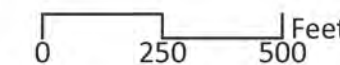
The 2020-2021 vulnerability methodology is the composite quintile score (sum) of the vulnerability risk factors.

Data sources:

- 1. 2015-2019 American Community Survey (ACS)
- 2. U.S. Dept. of Housing and Urban Development (HUD), CHAS data derived from 2013-2017 ACS.

### Legend

- Portland Urban Service Boundary
- Vulnerability Risk Score >= 10
- Ezone Project Area
- Parks / Open Space
- Wetlands
- Open Channel Streams
- Proposed Overlay Zones**
- Conservation (c) Overlay Zone
- Protection (p) Overlay Zone
- Existing Environmental Zones**
- Conservation (c) Overlay Zone
- Protection (p) Overlay Zone
- Building Footprints

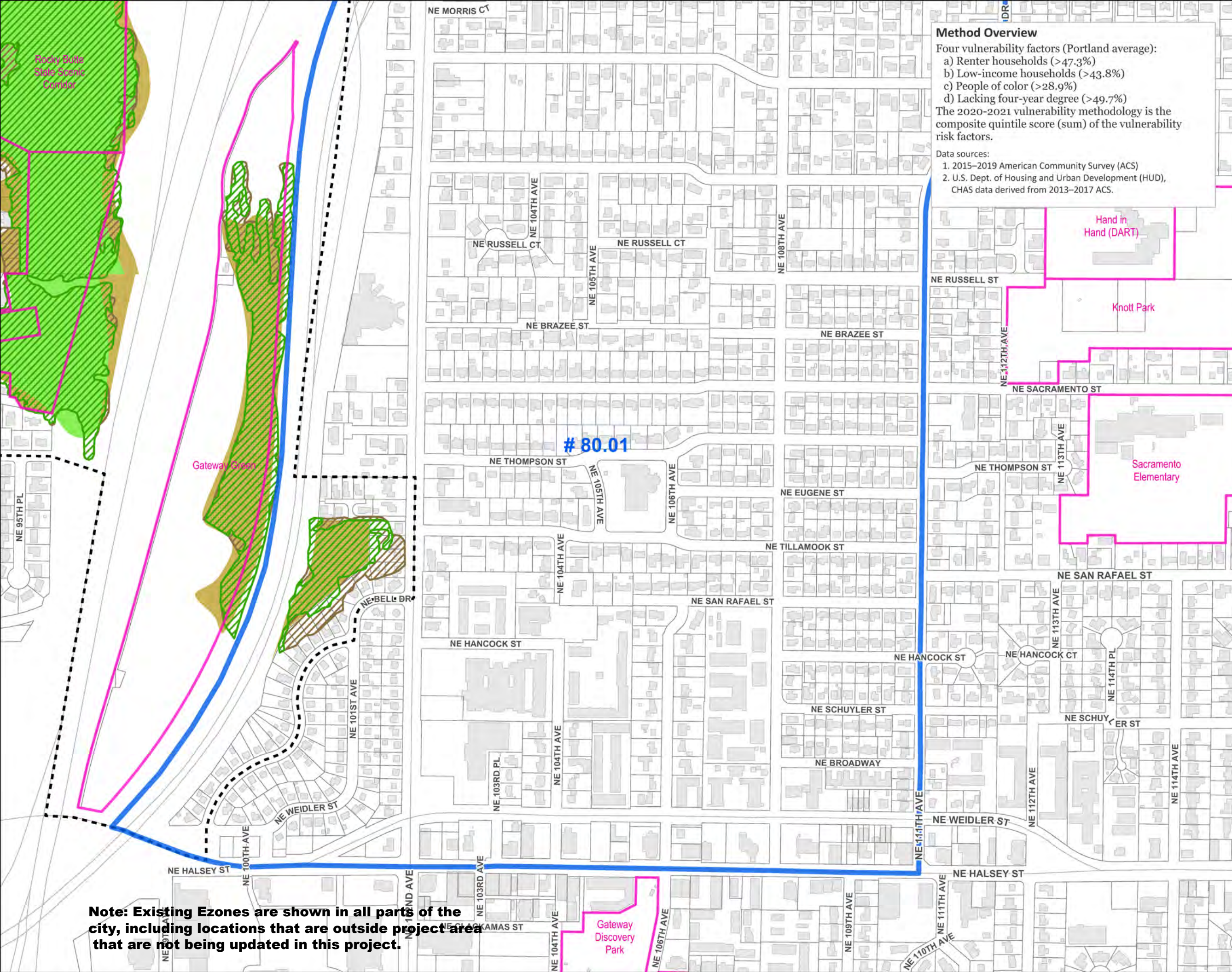


The information on this map was derived from City of Portland GIS databases. Care was taken in the creation of this map but it is provided "as is". The City of Portland cannot accept any responsibility for error, omissions or positional accuracy.

The City of Portland ensures meaningful access to city programs, services, and activities to comply with Civil Rights Title VI and ADA Title II laws and reasonably provides: translation, interpretation, modifications, accommodations, alternative formats, auxiliary aids and services. To request these services, contact 503-823-7700, City TTY 503-823-6868, Relay Service: 711.



THE BUREAU OF **PLANNING & SUSTAINABILITY**



**Note: Existing Ezones are shown in all parts of the city, including locations that are outside project area that are not being updated in this project.**



# Ezone Map Correction Project Vulnerability/Risk

Census Tract 82.02  
Composite Score = 13

### Legend

— Portland Urban Service Boundary

▬ Vulnerability Risk Score >= 10

⋯ Ezone Project Area

▭ Parks / Open Space

▨ Wetlands

⋯ Open Channel Streams

### Proposed Overlay Zones

▨ Conservation (c) Overlay Zone

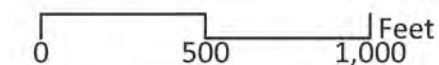
▨ Protection (p) Overlay Zone

### Existing Environmental Zones

▨ Conservation (c) Overlay Zone

▨ Protection (p) Overlay Zone

▨ Building Footprints



The information on this map was derived from City of Portland GIS databases. Care was taken in the creation of this map but it is provided "as is". The City of Portland cannot accept any responsibility for error, omissions or positional accuracy.

The City of Portland ensures meaningful access to city programs, services, and activities to comply with Civil Rights Title VI and ADA Title II laws and reasonably provides: translation, interpretation, modifications, accommodations, alternative formats, auxiliary aids and services. To request these services, contact 503-823-7700, City TTY 503-823-6868, Relay Service: 711.



## THE BUREAU OF PLANNING & SUSTAINABILITY

### Method Overview

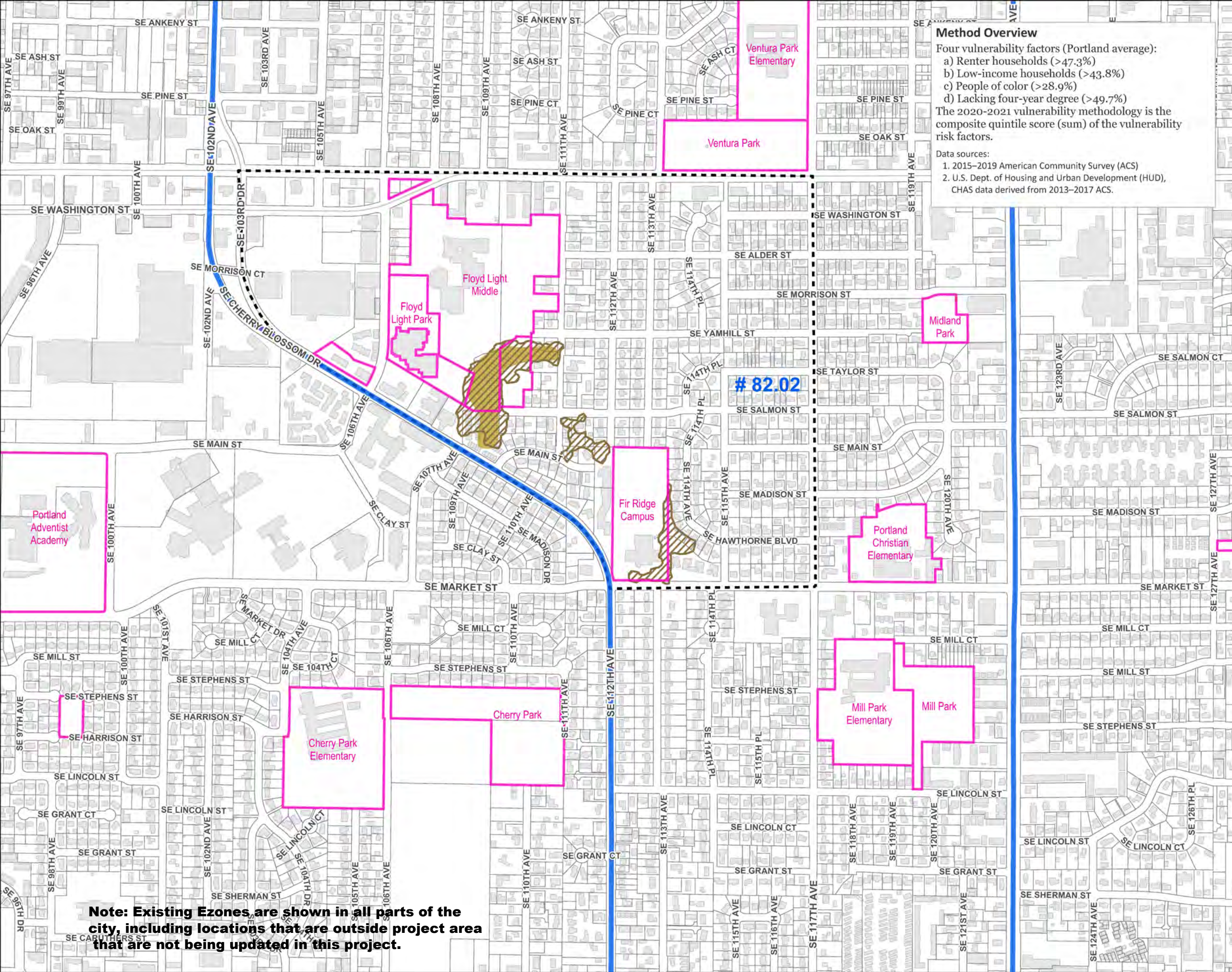
Four vulnerability factors (Portland average):

- a) Renter households (>47.3%)
- b) Low-income households (>43.8%)
- c) People of color (>28.9%)
- d) Lacking four-year degree (>49.7%)

The 2020-2021 vulnerability methodology is the composite quintile score (sum) of the vulnerability risk factors.

Data sources:

- 1. 2015-2019 American Community Survey (ACS)
- 2. U.S. Dept. of Housing and Urban Development (HUD), CHAS data derived from 2013-2017 ACS.



**Note: Existing Ezones are shown in all parts of the city, including locations that are outside project area that are not being updated in this project.**

# Ezone Map Correction Project Vulnerability/Risk

Census Tract 83.02  
Composite Score = 13

### Method Overview

Four vulnerability factors (Portland average):

- a) Renter households (>47.3%)
- b) Low-income households (>43.8%)
- c) People of color (>28.9%)
- d) Lacking four-year degree (>49.7%)

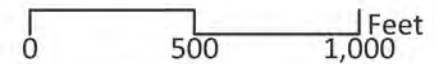
The 2020-2021 vulnerability methodology is the composite quintile score (sum) of the vulnerability risk factors.

Data sources:

- 1. 2015-2019 American Community Survey (ACS)
- 2. U.S. Dept. of Housing and Urban Development (HUD), CHAS data derived from 2013-2017 ACS.

### Legend

- Portland Urban Service Boundary
- Vulnerability Risk Score >= 10
- Ezone Project Area
- Parks / Open Space
- Wetlands
- Open Channel Streams
- Proposed Overlay Zones**
- Conservation (c) Overlay Zone
- Protection (p) Overlay Zone
- Existing Environmental Zones**
- Conservation (c) Overlay Zone
- Protection (p) Overlay Zone
- Building Footprints

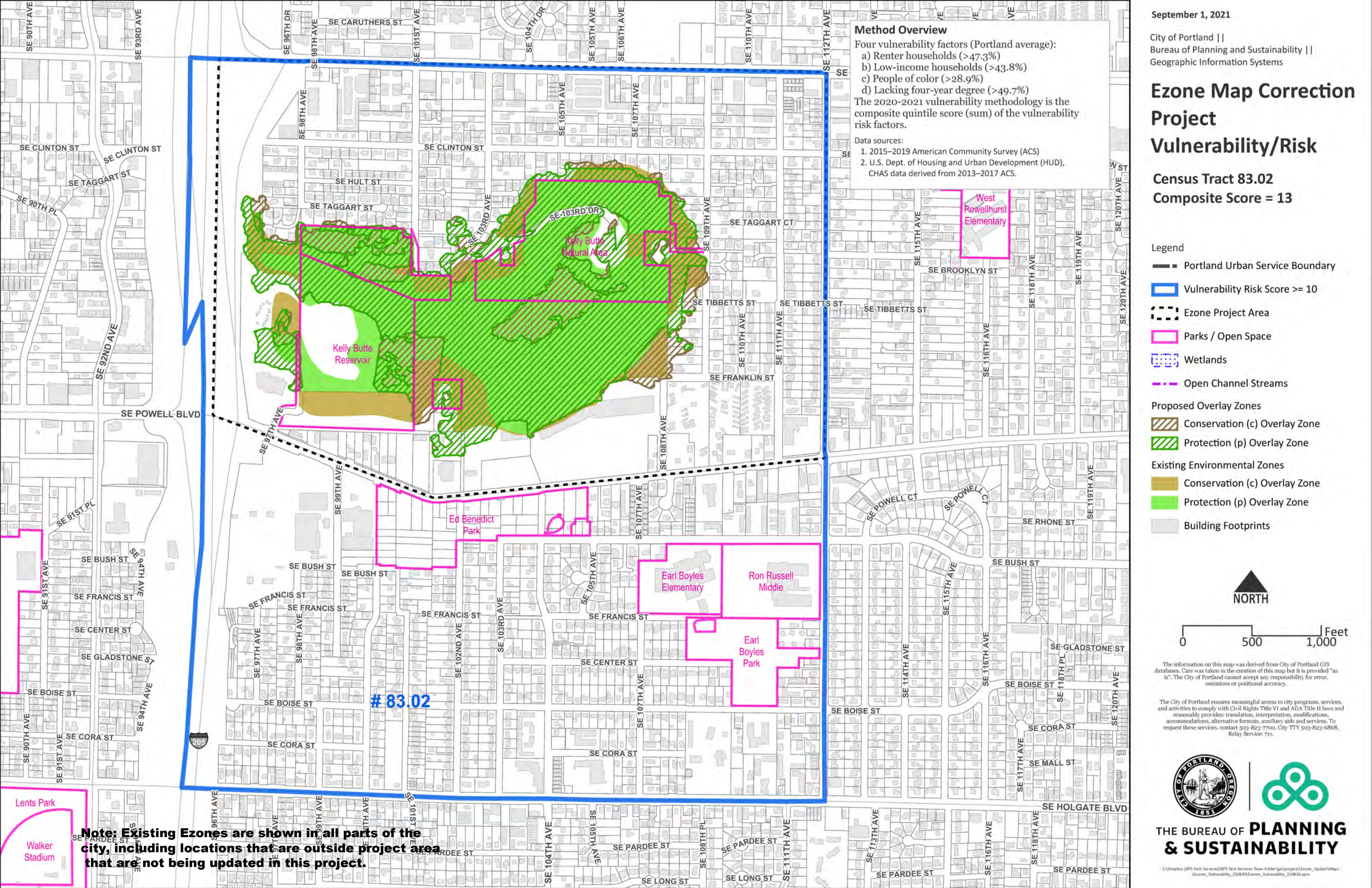


The information on this map was derived from City of Portland GIS databases. Care was taken in the creation of this map but it is provided "as is". The City of Portland cannot accept any responsibility for error, omissions or positional accuracy.

The City of Portland ensures meaningful access to city programs, services, and activities to comply with Civil Rights Title VI and ADA Title II laws and reasonably provides: translation, interpretation, modifications, accommodations, alternative formats, auxiliary aids and services. To request these services, contact 503-823-7700, City TTY 503-823-6868, Relay Service: 711.



THE BUREAU OF **PLANNING & SUSTAINABILITY**



**Note: Existing Ezones are shown in all parts of the city, including locations that are outside project area that are not being updated in this project.**

# Ezone Map Correction Project

## Vulnerability/Risk

Census Tract 85  
Composite Score = 13

### Method Overview

Four vulnerability factors (Portland average):

- a) Renter households (>47.3%)
- b) Low-income households (>43.8%)
- c) People of color (>28.9%)
- d) Lacking four-year degree (>49.7%)

The 2020-2021 vulnerability methodology is the composite quintile score (sum) of the vulnerability risk factors.

Data sources:

- 1. 2015-2019 American Community Survey (ACS)
- 2. U.S. Dept. of Housing and Urban Development (HUD), CHAS data derived from 2013-2017 ACS.

### Legend

— Portland Urban Service Boundary

▭ Vulnerability Risk Score >= 10

▭ Ezone Project Area

▭ Parks / Open Space

▭ Wetlands

▭ Open Channel Streams

### Proposed Overlay Zones

▭ Conservation (c) Overlay Zone

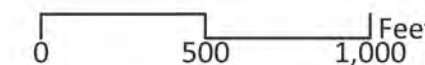
▭ Protection (p) Overlay Zone

### Existing Environmental Zones

▭ Conservation (c) Overlay Zone

▭ Protection (p) Overlay Zone

▭ Building Footprints

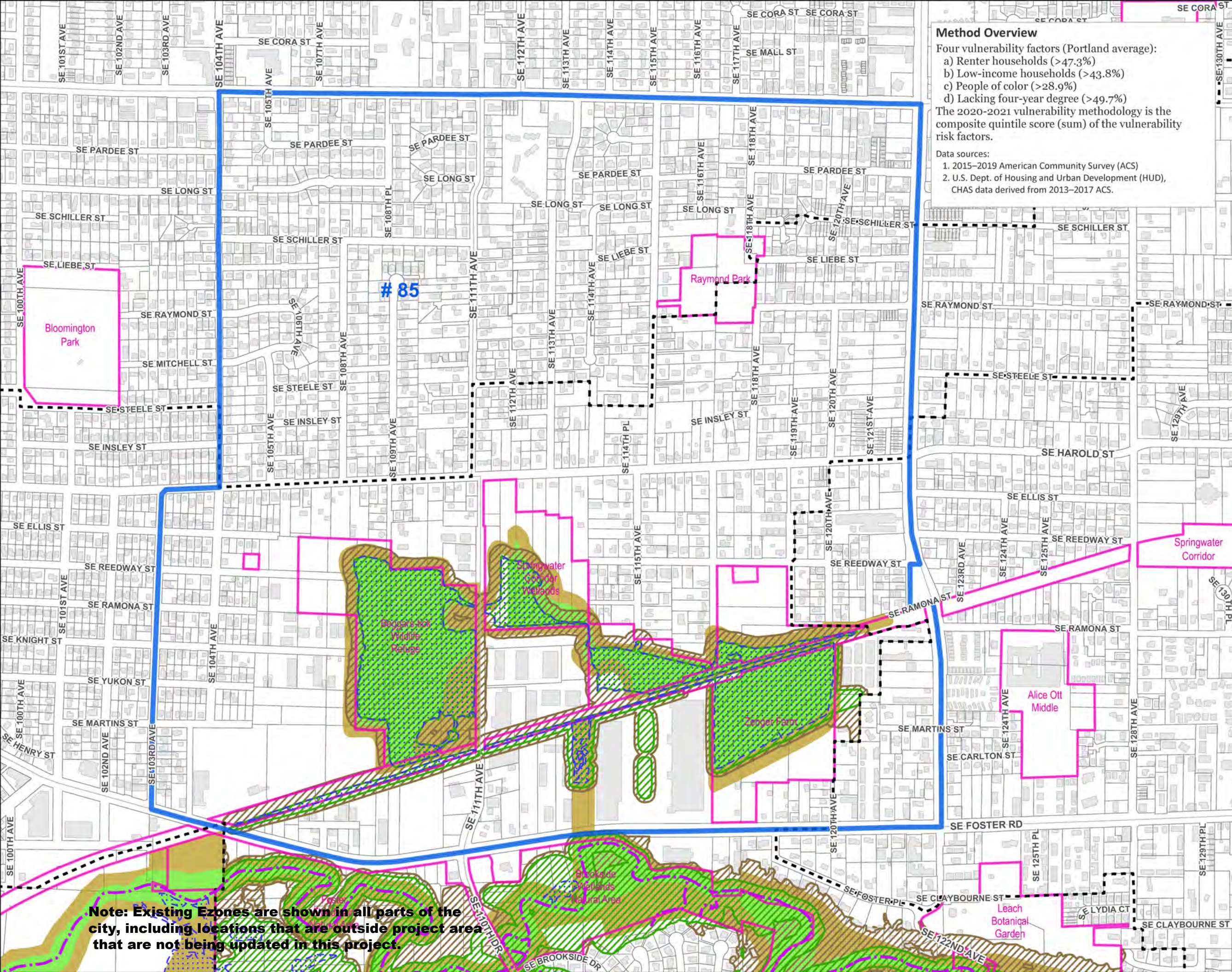


The information on this map was derived from City of Portland GIS databases. Care was taken in the creation of this map but it is provided "as is". The City of Portland cannot accept any responsibility for error, omissions or positional accuracy.

The City of Portland ensures meaningful access to city programs, services, and activities to comply with Civil Rights Title VI and ADA Title II laws and reasonably provides: translation, interpretation, modifications, accommodations, alternative formats, auxiliary aids and services. To request these services, contact 503-823-7700, City TTY 503-823-6868, Relay Service: 711.



## THE BUREAU OF PLANNING & SUSTAINABILITY



**Note: Existing Ezones are shown in all parts of the city, including locations that are outside project area that are not being updated in this project.**

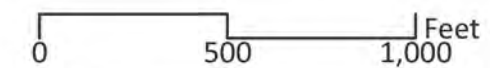
# Ezone Map Correction Project

## Vulnerability/Risk

Census Tract 86  
Composite Score = 13

### Legend

- Portland Urban Service Boundary
- Vulnerability Risk Score >= 10
- Ezone Project Area
- Parks / Open Space
- Wetlands
- Open Channel Streams
- Proposed Overlay Zones
  - Conservation (c) Overlay Zone
  - Protection (p) Overlay Zone
- Existing Environmental Zones
  - Conservation (c) Overlay Zone
  - Protection (p) Overlay Zone
- Building Footprints



The information on this map was derived from City of Portland GIS databases. Care was taken in the creation of this map but it is provided "as is". The City of Portland cannot accept any responsibility for error, omissions or positional accuracy.

The City of Portland ensures meaningful access to city programs, services, and activities to comply with Civil Rights Title VI and ADA Title II laws and reasonably provides: translation, interpretation, modifications, accommodations, alternative formats, auxiliary aids and services. To request these services, contact 503-823-7700, City TTY 503-823-6868, Relay Service: 711.



### THE BUREAU OF PLANNING & SUSTAINABILITY

### Method Overview

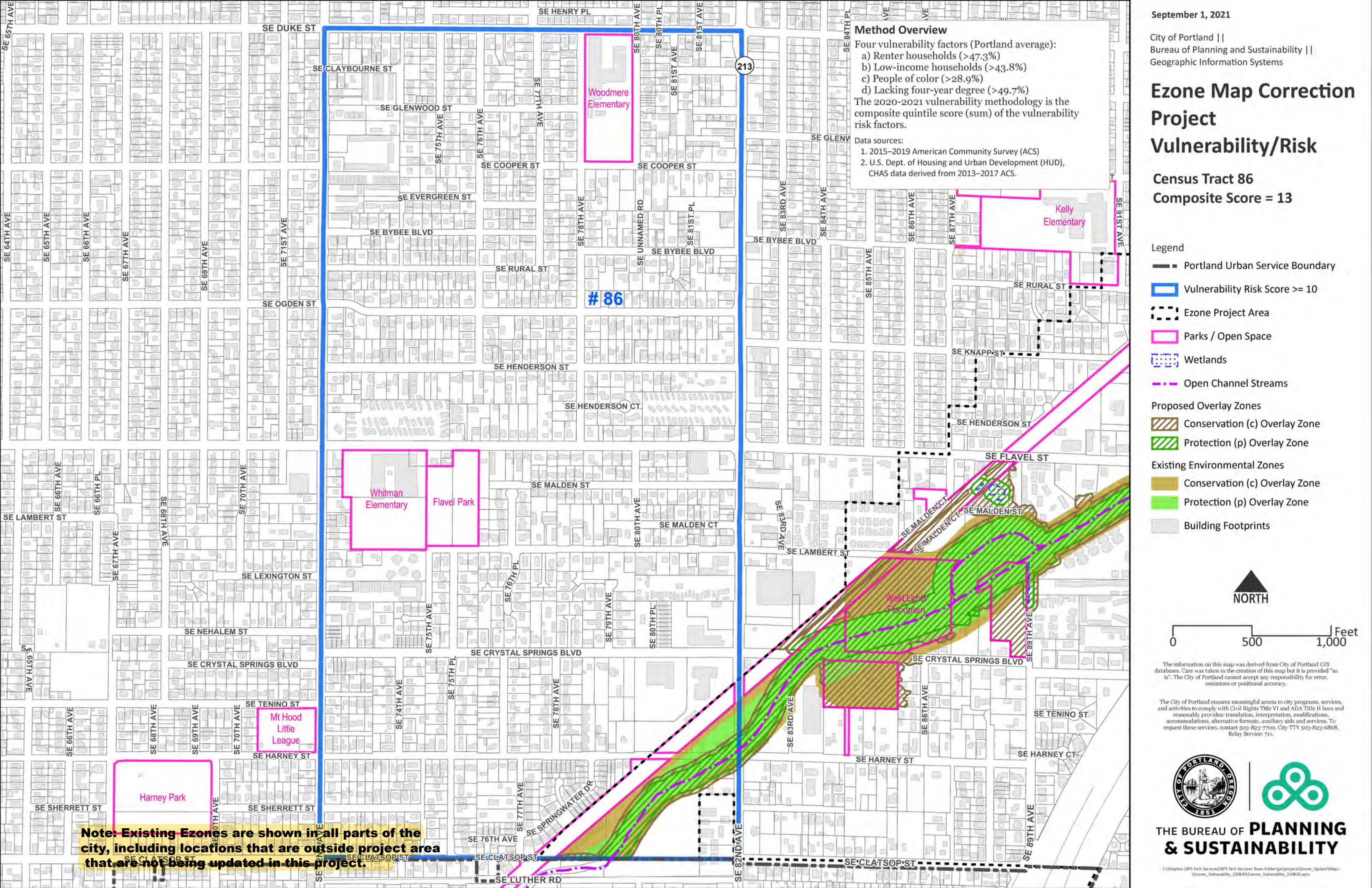
Four vulnerability factors (Portland average):

- Renter households (>47.3%)
- Low-income households (>43.8%)
- People of color (>28.9%)
- Lacking four-year degree (>49.7%)

The 2020-2021 vulnerability methodology is the composite quintile score (sum) of the vulnerability risk factors.

Data sources:

- 2015-2019 American Community Survey (ACS)
- U.S. Dept. of Housing and Urban Development (HUD), CHAS data derived from 2013-2017 ACS.



**Note: Existing Ezones are shown in all parts of the city, including locations that are outside project area that are not being updated in this project.**

# Ezone Map Correction Project Vulnerability/Risk

Census Tract 89.01 (east)  
Composite Score = 10

### Method Overview

Four vulnerability factors (Portland average):

- a) Renter households (>47.3%)
- b) Low-income households (>43.8%)
- c) People of color (>28.9%)
- d) Lacking four-year degree (>49.7%)

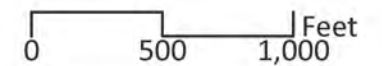
The 2020-2021 vulnerability methodology is the composite quintile (sum) of the vulnerability risk factors.

Data sources:

1. 2015-2019 American Community Survey (ACS)
2. U.S. Dept. of Housing and Urban Development (HUD), CHAS data derived from 2013-2017 ACS.

### Legend

- Portland Urban Service Boundary
- Vulnerability Risk Score >= 10
- Ezone Project Area
- Parks / Open Space
- Wetlands
- Open Channel Streams
- Proposed Overlay Zones**
- Conservation (c) Overlay Zone
- Protection (p) Overlay Zone
- Existing Environmental Zones**
- Conservation (c) Overlay Zone
- Protection (p) Overlay Zone
- Building Footprints

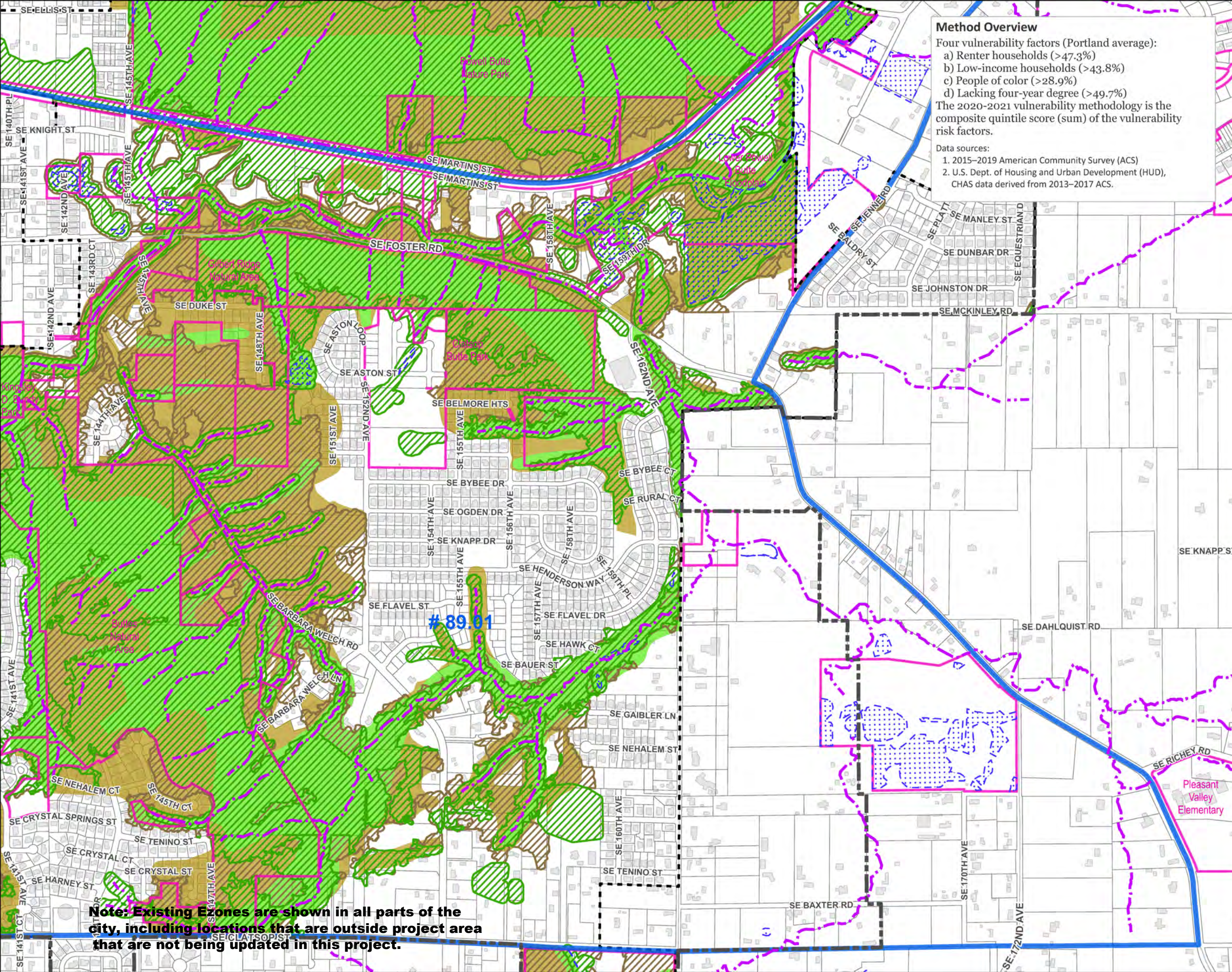


The information on this map was derived from City of Portland GIS databases. Care was taken in the creation of this map but it is provided "as is". The City of Portland cannot accept any responsibility for error, omissions or positional accuracy.

The City of Portland ensures meaningful access to city programs, services, and activities to comply with Civil Rights Title VI and ADA Title II laws and reasonably provides: translation, interpretation, modifications, accommodations, alternative formats, auxiliary aids and services. To request these services, contact 503-823-7700, City TTY 503-823-6868, Relay Service: 711.



## THE BUREAU OF PLANNING & SUSTAINABILITY



**Note: Existing Ezones are shown in all parts of the city, including locations that are outside project area that are not being updated in this project.**

# Ezone Map Correction Project Vulnerability/Risk

Census Tract 89.01 (west)  
Composite Score = 10

### Method Overview

Four vulnerability factors (Portland average):

- a) Renter households (>47.3%)
- b) Low-income households (>43.8%)
- c) People of color (>28.9%)
- d) Lacking four-year degree (>49.7%)

The 2020-2021 vulnerability methodology is the composite quintile score (sum) of the vulnerability risk factors.

Data sources:

- 1. 2015-2019 American Community Survey (ACS)
- 2. U.S. Dept. of Housing and Urban Development (HUD), CHAS data derived from 2013-2017 ACS.

### Legend

— Portland Urban Service Boundary

■ Vulnerability Risk Score >= 10

▭ Ezone Project Area

▭ Parks / Open Space

▭ Wetlands

▭ Open Channel Streams

▭ Proposed Overlay Zones

▭ Conservation (c) Overlay Zone

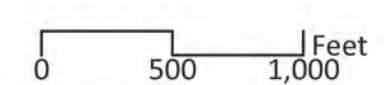
▭ Protection (p) Overlay Zone

▭ Existing Environmental Zones

▭ Conservation (c) Overlay Zone

▭ Protection (p) Overlay Zone

▭ Building Footprints



The information on this map was derived from City of Portland GIS databases. Care was taken in the creation of this map but it is provided "as is". The City of Portland cannot accept any responsibility for error, omissions or positional accuracy.

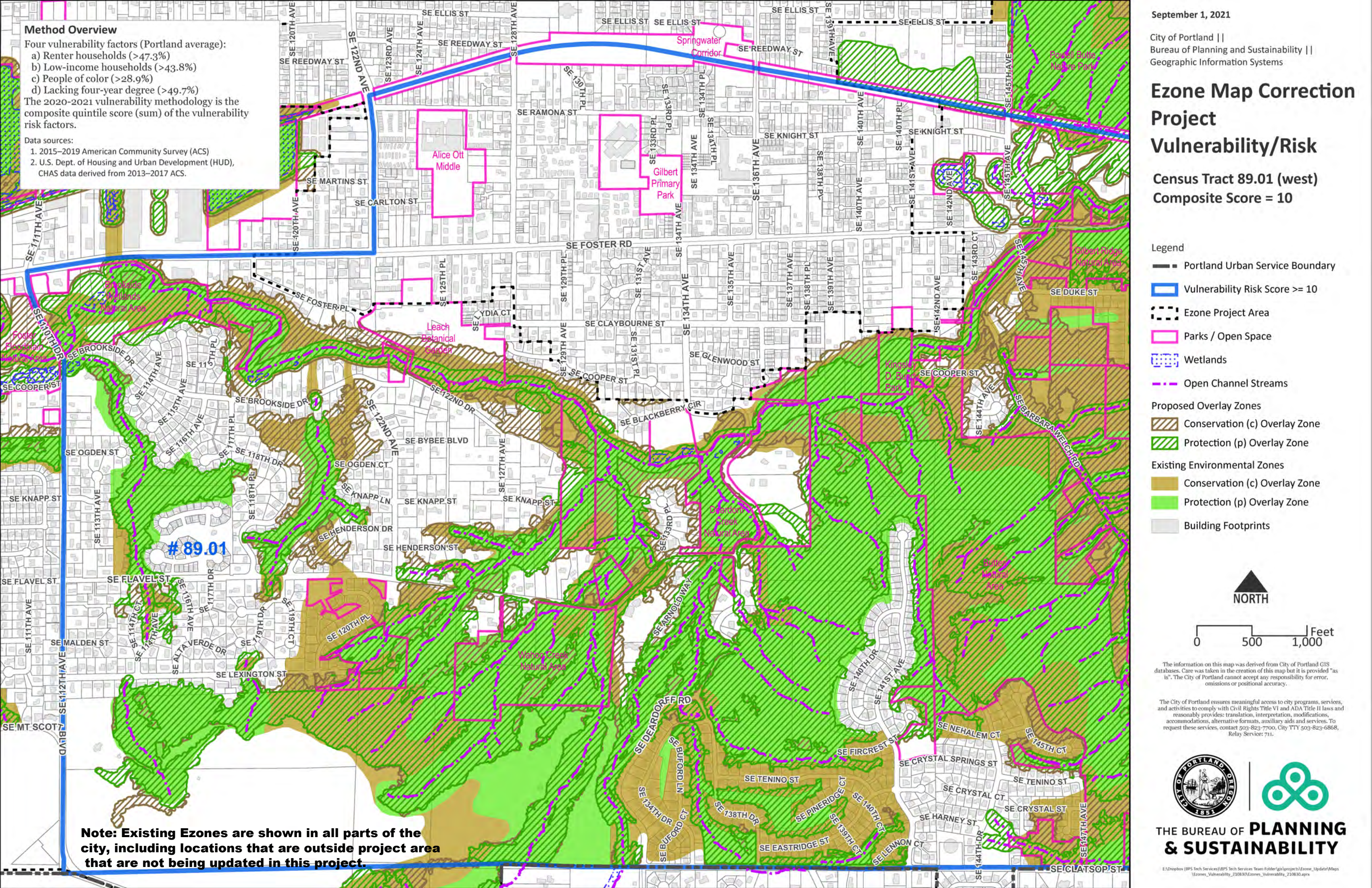
The City of Portland ensures meaningful access to city programs, services, and activities to comply with Civil Rights Title VI and ADA Title II laws and reasonably provides: translation, interpretation, modifications, accommodations, alternative formats, auxiliary aids and services. To request these services, contact 503-823-7700, City TTY 503-823-6868, Relay Service: 711.



## THE BUREAU OF PLANNING & SUSTAINABILITY

E:\Dropbox (BPS Tech Services)\BPS Tech Services Team Folder\GIS\projects\Ezone\_Update\Maps\Zones\_Vulnerability\_210830\Ezones\_Vulnerability\_210830.aprx

**Note: Existing Ezones are shown in all parts of the city, including locations that are outside project area that are not being updated in this project.**



# Ezone Map Correction Project

## Vulnerability/Risk

Census Tract 89.02  
Composite Score = 12

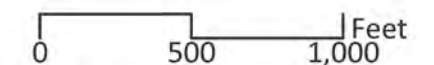
### Method Overview

Four vulnerability factors (Portland average):  
a) Renter households (>47.3%)  
b) Low-income households (>43.8%)  
c) People of color (>28.9%)  
d) Lacking four-year degree (>49.7%)  
The 2020-2021 vulnerability methodology is the composite quintile score (sum) of the vulnerability risk factors.

Data sources:  
1. 2015-2019 American Community Survey (ACS)  
2. U.S. Dept. of Housing and Urban Development (HUD), CHAS data derived from 2013-2017 ACS.

### Legend

- Portland Urban Service Boundary
- Vulnerability Risk Score >= 10
- Ezone Project Area
- Parks / Open Space
- Wetlands
- Open Channel Streams
- Proposed Overlay Zones
  - Conservation (c) Overlay Zone
  - Protection (p) Overlay Zone
- Existing Environmental Zones
  - Conservation (c) Overlay Zone
  - Protection (p) Overlay Zone
- Building Footprints

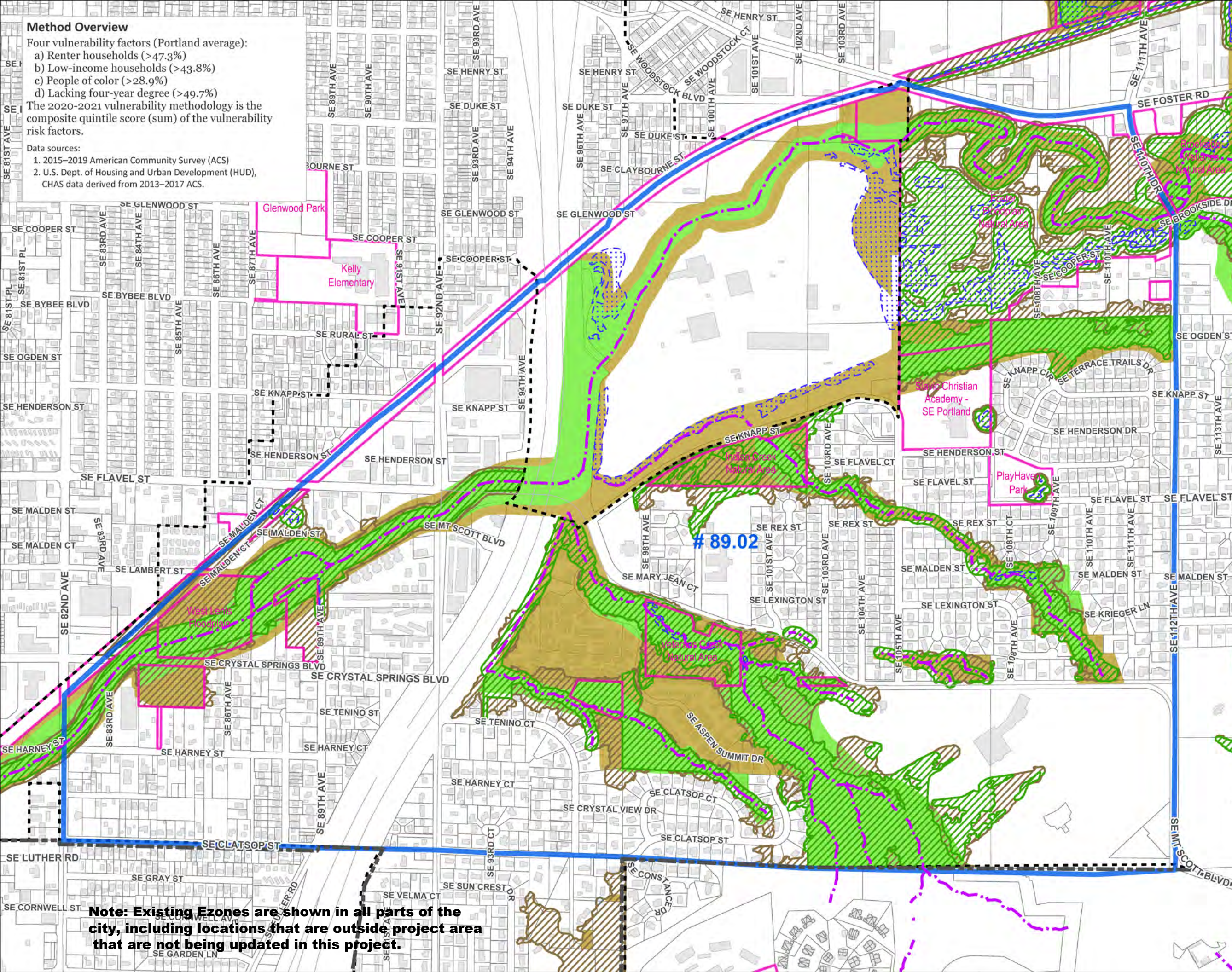


The information on this map was derived from City of Portland GIS databases. Care was taken in the creation of this map but it is provided "as is". The City of Portland cannot accept any responsibility for error, omissions or positional accuracy.

The City of Portland ensures meaningful access to city programs, services, and activities to comply with Civil Rights Title VI and ADA Title II laws and reasonably provides: translation, interpretation, modifications, accommodations, alternative formats, auxiliary aids and services. To request these services, contact 503-823-7700, City TTY 503-823-6868, Relay Service: 711.



THE BUREAU OF **PLANNING & SUSTAINABILITY**



**Note: Existing Ezones are shown in all parts of the city, including locations that are outside project area that are not being updated in this project.**

# Ezone Map Correction Project Vulnerability/Risk

Census Tract 91.02  
Composite Score = 13

### Method Overview

Four vulnerability factors (Portland average):

- a) Renter households (>47.3%)
- b) Low-income households (>43.8%)
- c) People of color (>28.9%)
- d) Lacking four-year degree (>49.7%)

The 2020-2021 vulnerability methodology is the composite quintile score (sum) of the vulnerability risk factors.

Data sources:

- 1. 2015-2019 American Community Survey (ACS)
- 2. U.S. Dept. of Housing and Urban Development (HUD), CHAS data derived from 2013-2017 ACS.

# 91.02

### Legend

— Portland Urban Service Boundary

▭ Vulnerability Risk Score >= 10

▭ Ezone Project Area

▭ Parks / Open Space

▭ Wetlands

▭ Open Channel Streams

Proposed Overlay Zones

▭ Conservation (c) Overlay Zone

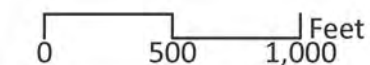
▭ Protection (p) Overlay Zone

Existing Environmental Zones

▭ Conservation (c) Overlay Zone

▭ Protection (p) Overlay Zone

▭ Building Footprints



The information on this map was derived from City of Portland GIS databases. Care was taken in the creation of this map but it is provided "as is". The City of Portland cannot accept any responsibility for error, omissions or positional accuracy.

The City of Portland ensures meaningful access to city programs, services, and activities to comply with Civil Rights Title VI and ADA Title II laws and reasonably provides: translation, interpretation, modifications, accommodations, alternative formats, auxiliary aids and services. To request these services, contact 503-823-7700, City TTY 503-823-6868, Relay Service: 711.



THE BUREAU OF **PLANNING & SUSTAINABILITY**

**Note: Existing Ezones are shown in all parts of the city, including locations that are outside project area that are not being updated in this project.**



# Ezone Map Correction Project Vulnerability/Risk

Census Tract 93.02  
Composite Score = 12

### Method Overview

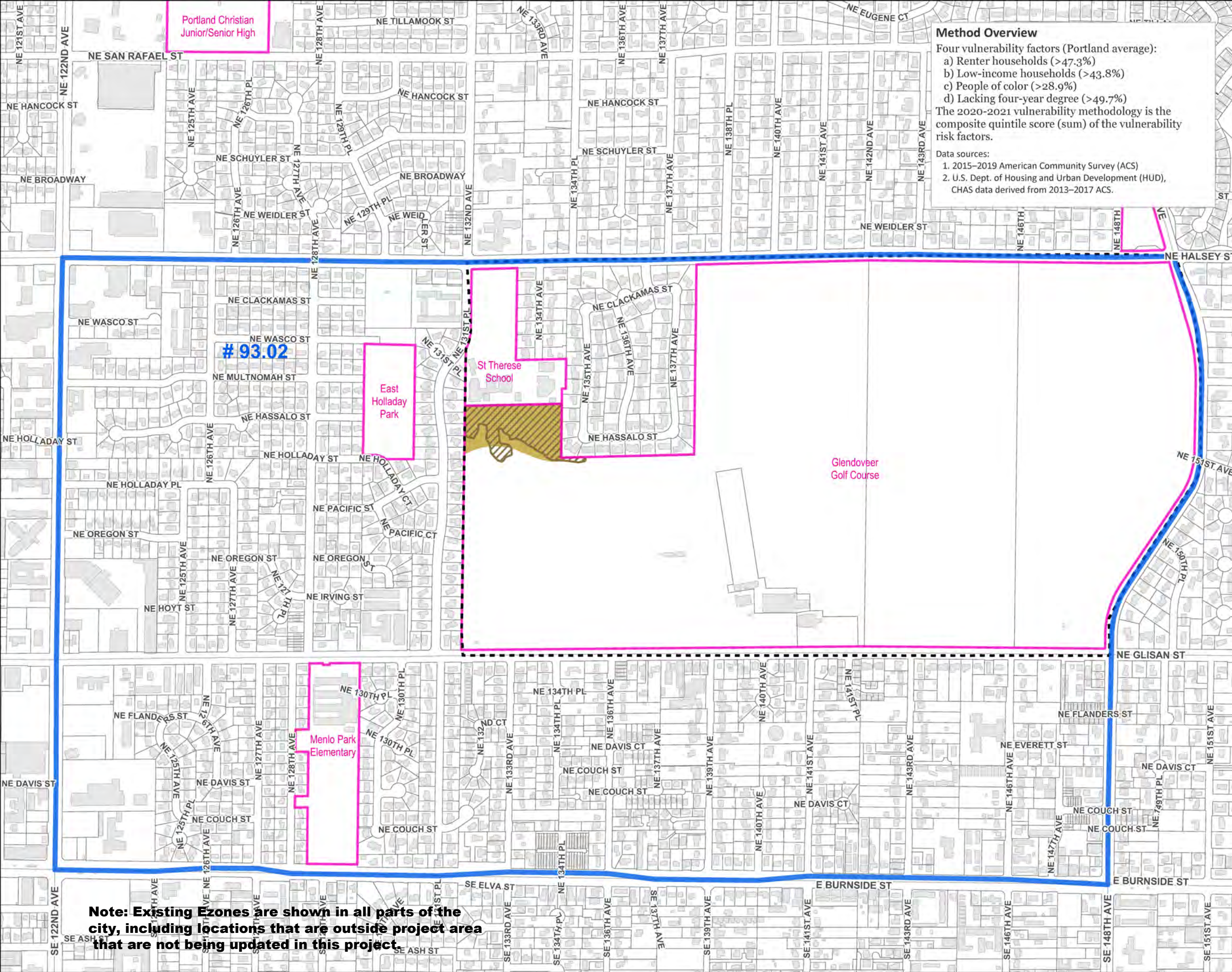
Four vulnerability factors (Portland average):

- a) Renter households (>47.3%)
- b) Low-income households (>43.8%)
- c) People of color (>28.9%)
- d) Lacking four-year degree (>49.7%)

The 2020-2021 vulnerability methodology is the composite quintile score (sum) of the vulnerability risk factors.

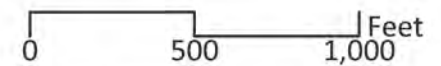
Data sources:

- 1. 2015-2019 American Community Survey (ACS)
- 2. U.S. Dept. of Housing and Urban Development (HUD), CHAS data derived from 2013-2017 ACS.



### Legend

- Portland Urban Service Boundary
- Vulnerability Risk Score >= 10
- Ezone Project Area
- Parks / Open Space
- Wetlands
- Open Channel Streams
- Proposed Overlay Zones**
- Conservation (c) Overlay Zone
- Protection (p) Overlay Zone
- Existing Environmental Zones**
- Conservation (c) Overlay Zone
- Protection (p) Overlay Zone
- Building Footprints



The information on this map was derived from City of Portland GIS databases. Care was taken in the creation of this map but it is provided "as is". The City of Portland cannot accept any responsibility for error, omissions or positional accuracy.

The City of Portland ensures meaningful access to city programs, services, and activities to comply with Civil Rights Title VI and ADA Title II laws and reasonably provides: translation, interpretation, modifications, accommodations, alternative formats, auxiliary aids and services. To request these services, contact 503-823-7700, City TTY 503-823-6868, Relay Service: 711.



THE BUREAU OF **PLANNING & SUSTAINABILITY**

**Note: Existing Ezones are shown in all parts of the city, including locations that are outside project area that are not being updated in this project.**

# Ezone Map Correction Project

## Vulnerability/Risk

Census Tract 95.01  
Composite Score = 13

### Method Overview

Four vulnerability factors (Portland average):

- a) Renter households (>47.3%)
- b) Low-income households (>43.8%)
- c) People of color (>28.9%)
- d) Lacking four-year degree (>49.7%)

The 2020-2021 vulnerability methodology is the composite quintile score (sum) of the vulnerability risk factors.

Data sources:

- 1. 2015-2019 American Community Survey (ACS)
- 2. U.S. Dept. of Housing and Urban Development (HUD), CHAS data derived from 2013-2017 ACS.

### Legend

— Portland Urban Service Boundary

▭ Vulnerability Risk Score >= 10

▭ Ezone Project Area

▭ Parks / Open Space

▭ Wetlands

▭ Open Channel Streams

Proposed Overlay Zones

▭ Conservation (c) Overlay Zone

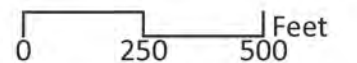
▭ Protection (p) Overlay Zone

Existing Environmental Zones

▭ Conservation (c) Overlay Zone

▭ Protection (p) Overlay Zone

▭ Building Footprints

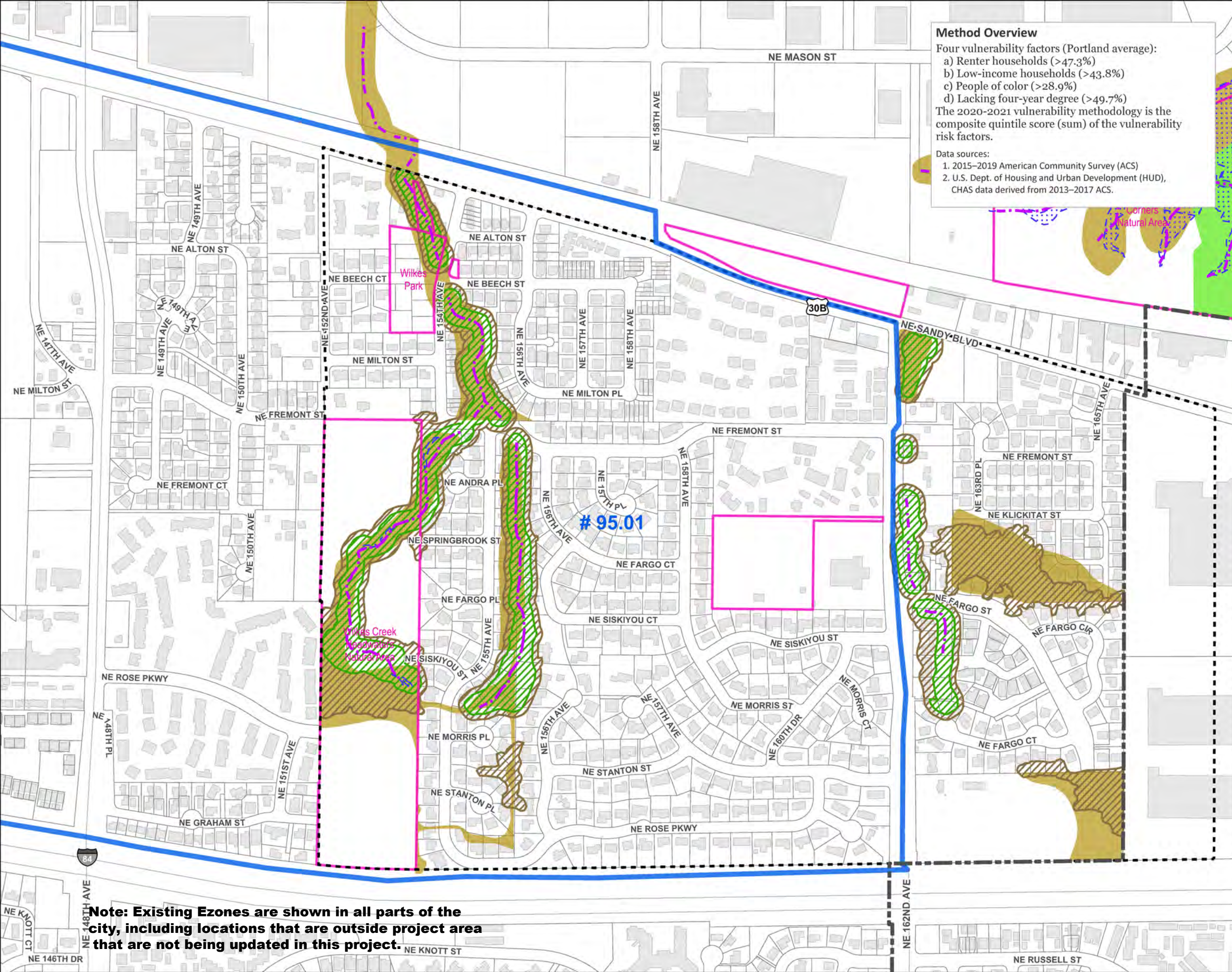


The information on this map was derived from City of Portland GIS databases. Care was taken in the creation of this map but it is provided "as is". The City of Portland cannot accept any responsibility for error, omissions or positional accuracy.

The City of Portland ensures meaningful access to city programs, services, and activities to comply with Civil Rights Title VI and ADA Title II laws and reasonably provides: translation, interpretation, modifications, accommodations, alternative formats, auxiliary aids and services. To request these services, contact 503-823-7700, City TTY 503-823-6868, Relay Service: 711.



## THE BUREAU OF PLANNING & SUSTAINABILITY



**Note: Existing Ezones are shown in all parts of the city, including locations that are outside project area that are not being updated in this project.**