



PORTLAND PARKS & RECREATION<sup>SM</sup>

Healthy Parks, Healthy Portland

# South Park Blocks Master Plan

## Recommended Draft



M I G

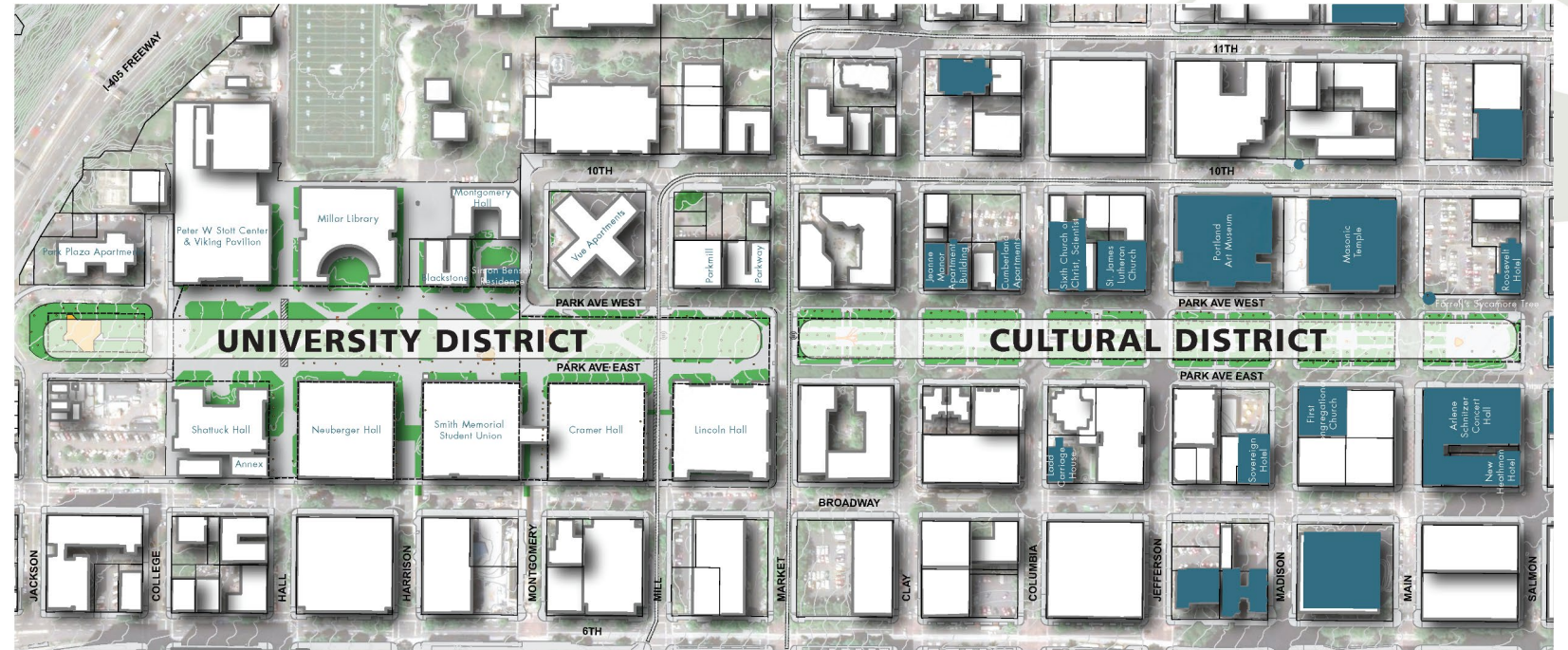
Mayer/Reed **TOOLE**  
DESIGN

Morgan Holen  
& ASSOCIATES

LCA



●●●● Potential Green Loop Alignment



## Base Map

### GENERAL MAP FEATURES

- Sidewalks/Pedestrian Paving
- Building Footprints
- Historic Landmark Buildings
- Park Block Tax Lots
- Other Tax Lots
- Contours (2' LIDAR)
- Street Car Line
- Easement

### PARK BLOCK FEATURES

- Park Block Character Feature
- Street Car Station
- Portland Loo Bathroom

### VEGETATION

- Park Block Tree Trunks (2019)
- Planting Areas



## Project Goals

1. Community-supported park design
2. Opportunities for all ages and abilities
3. Understand, respect, and reflect nuanced history
4. Protect and enhance trees into the future





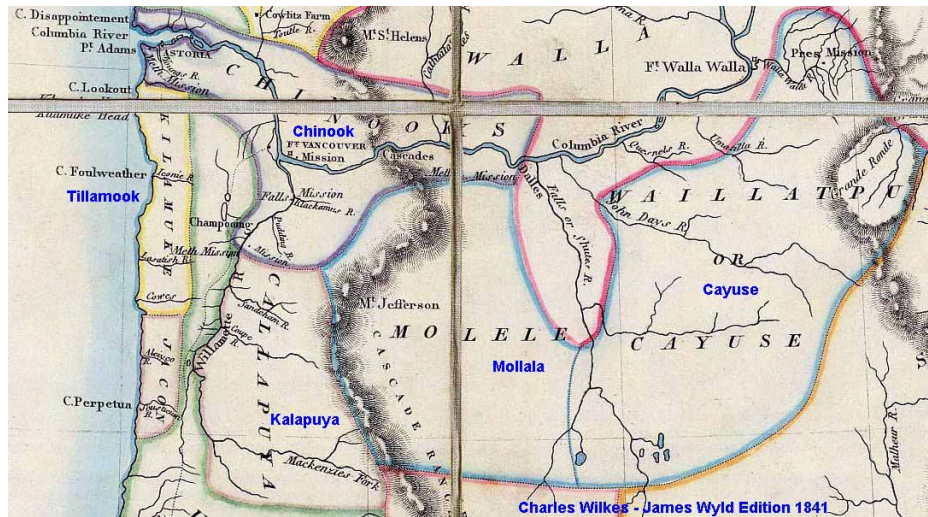
## Project Goals *continued...*

5. Integration of future Green Loop and safety for all
6. Account for adjacent uses and development trends
7. Reflect the capacities, resources, and strengths of the many stewards of the South Park Blocks



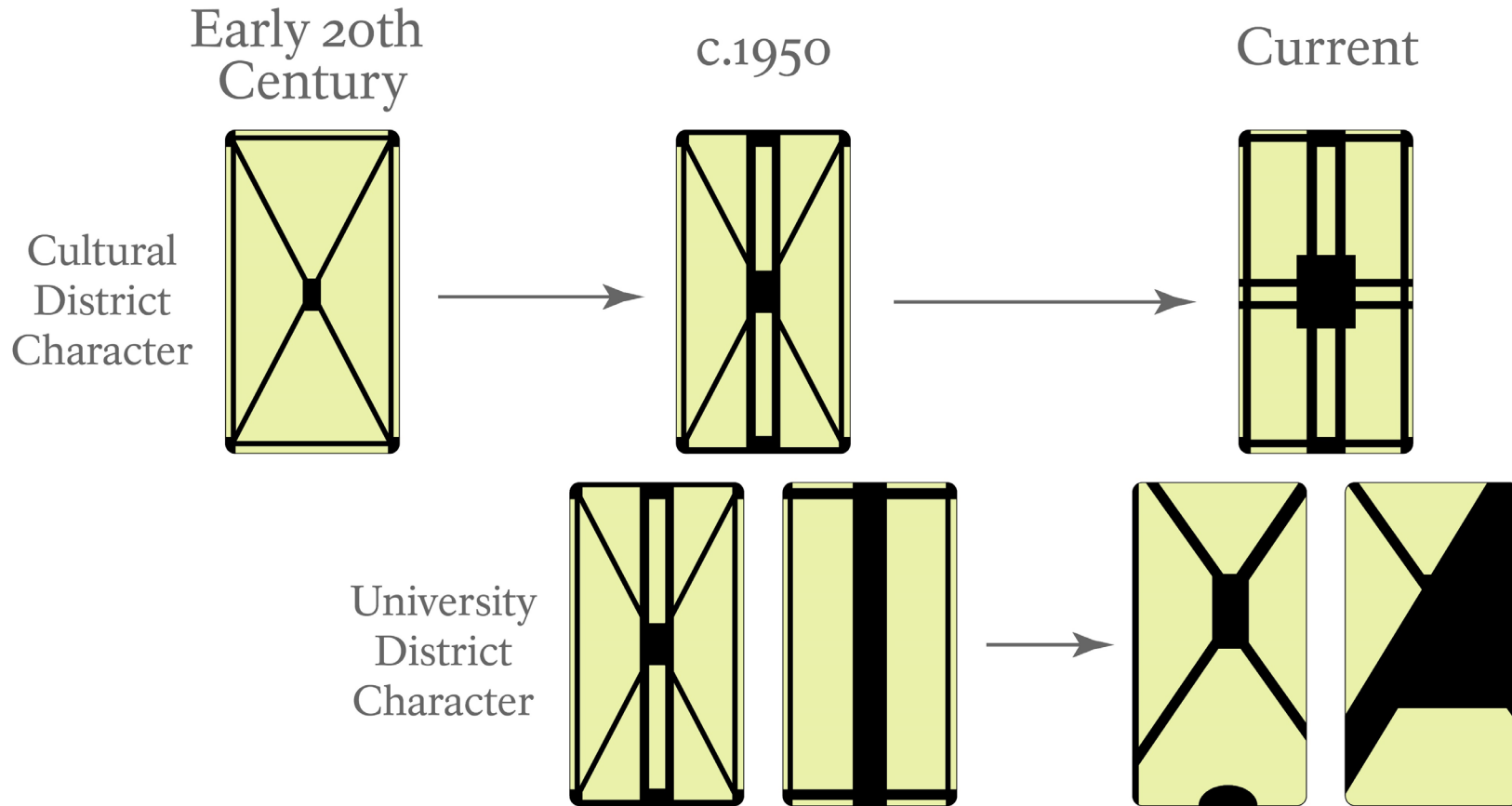


# History of Portland Settlement and the South Park Blocks





# Developed Park History and Change over Time





## Character-Defining Park Features

1. Spatial organization with 12 blocks forming a linear park
2. Sequence of focal points and gathering areas
3. Balance of hardscape plaza spaces and planting areas
4. Grid-arrangement of trees and mature canopy
5. North-south focused circulation patterns





## Community and Technical Advisors

- 8 at-large community representatives, including nearby residents
- Downtown Neighborhood Association
- Friends of the South Park Blocks
- Native American Community Advisory Council and PSU Indigenous Nations Studies
- Oregon Historical Society
- Portland'5
- Portland Art Museum
- Portland Business Alliance
- Portland Farmers Market
- Portland Parks Board
- **PP&R** Urban Forestry, Land Stewardship, Special Events, Park Rangers, Capital Project Managers, and Professional Park Repair and Maintenance
- Regional Arts and Culture Council
- PSU Planning and Maintenance
- TriMet and Portland Streetcar
- Portland...
  - Bureau of Transportation
  - Bureau of Planning and Sustainability
  - Bureau of Development Services
  - Bureau of Environmental Services
  - Community Safety Team







# Community Engagement

- 7 Community Advisory Committee Meetings
- Walking Tours and Concept Development Workshop
- 4 Focus Groups and Tabling at Events
- 75+ Stakeholder and Community Group Briefings
- 3 Community Gatherings and Comment Reports
  - 150 participants - Party in the Park
  - 250 participants - PSU Farmers Market Community Booth and Open House event
  - SPB project web page received over **15,000** views
  - **1050** visits – Virtual Open House
- **105** Lawn Signs in Spanish and English





## What We Heard:

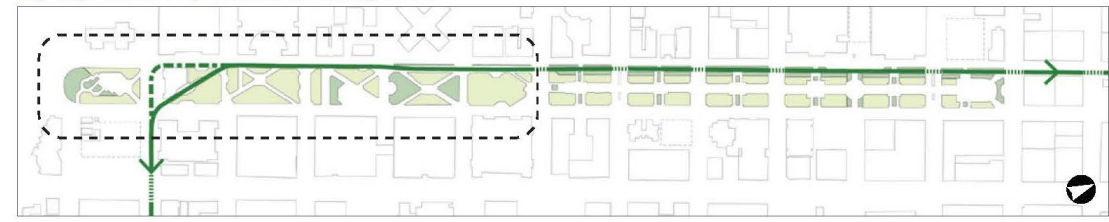
- More native plantings and habitat; cultural performances; additional, more diverse public art; places for rest and quiet; live music; community event space
- Safety and accessibility as major priorities for improvement
- Preference for Central Promenade concept, support for more group/family seating as well as connected gathering and event spaces
- Favor for more tree species diversity with elms prioritized around Central Promenade
- Contrasting opinions about the Green Loop, trees, and historic considerations
- Strong support from CAC members with one opposed



**RECOMMENDED DESIGN - UNIVERSITY DISTRICT**

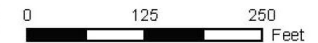
**South Park Blocks MASTER PLAN**

Key Map: Green Loop Recommended Alignment



**LEGEND**

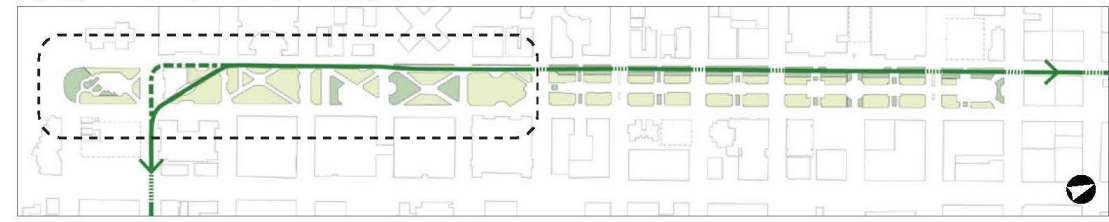
- |                        |                                      |                           |  |
|------------------------|--------------------------------------|---------------------------|--|
| Building Footprint     | Green Loop Shared Use Path (Block 2) | Cross Walk                | Turf / Lawn                              |
| Roadway                | Green Loop Path (Blocks 5-12)        | Gathering Areas           | Tree Canopy                              |
| Pedestrian Paving      | Streetcar Line                       | Bench / Social Seating    | Plant Bed: Native, Ornamental, or Flower |
| Shared Bike / Ped Zone |                                      | Small Scale Feature / Art | Playground Safety Surfacing              |



**RECOMMENDED DESIGN - UNIVERSITY DISTRICT**

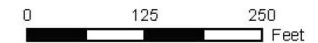
**South Park Blocks MASTER PLAN**

Key Map: Green Loop Recommended Alignment

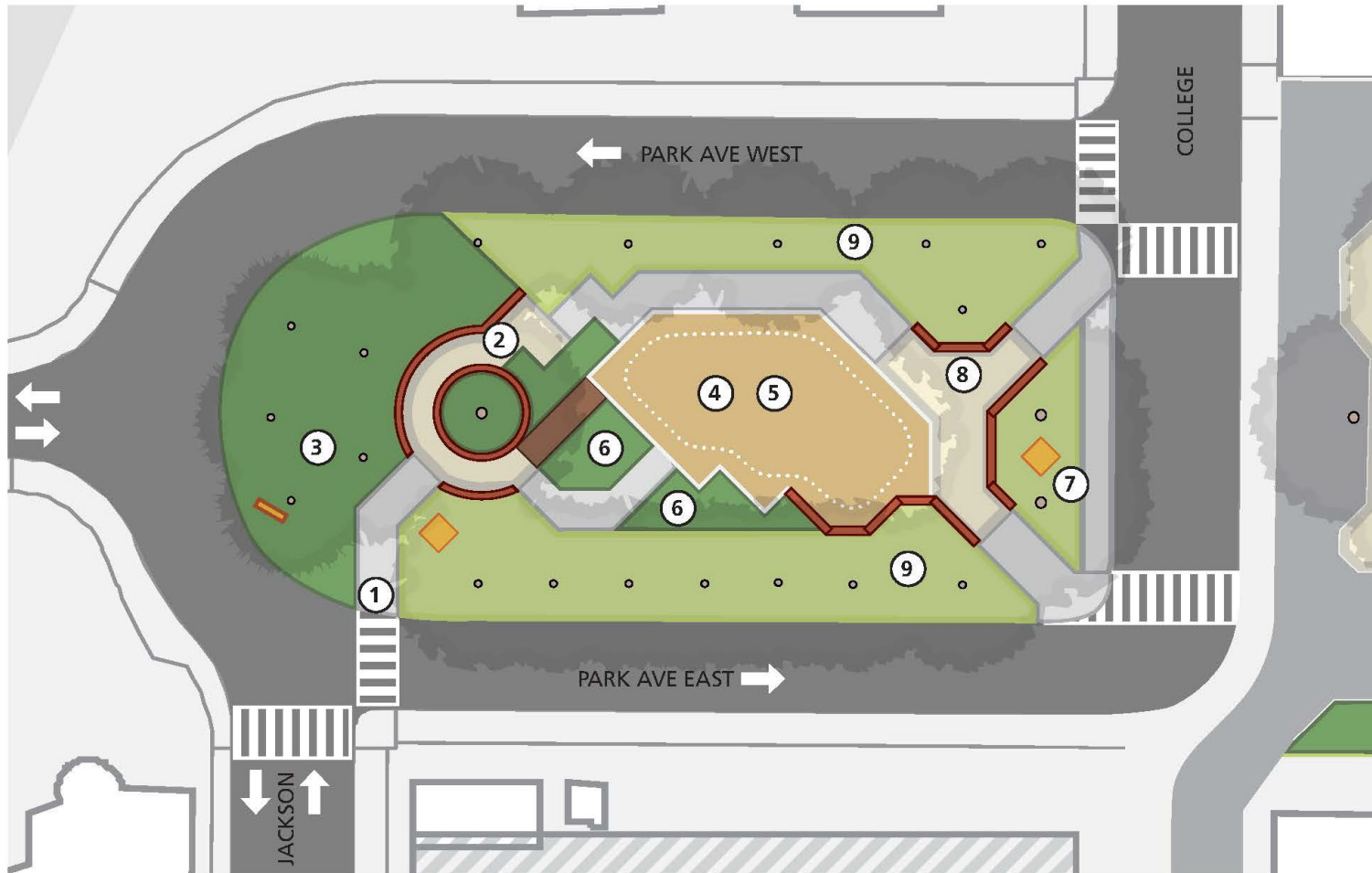
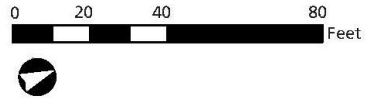


**LEGEND**

- |                        |                                      |                           |  |
|------------------------|--------------------------------------|---------------------------|--|
| Building Footprint     | Green Loop Shared Use Path (Block 2) | Cross Walk                | Turf / Lawn                              |
| Roadway                | Green Loop Path (Blocks 5-12)        | Gathering Areas           | Tree Canopy                              |
| Pedestrian Paving      | Streetcar Line                       | Bench / Social Seating    | Plant Bed: Native, Ornamental, or Flower |
| Shared Bike / Ped Zone |                                      | Small Scale Feature / Art | Playground Safety Surfacing              |



# BLOCK 1 PSU PLAYGROUND GATHERING AREA

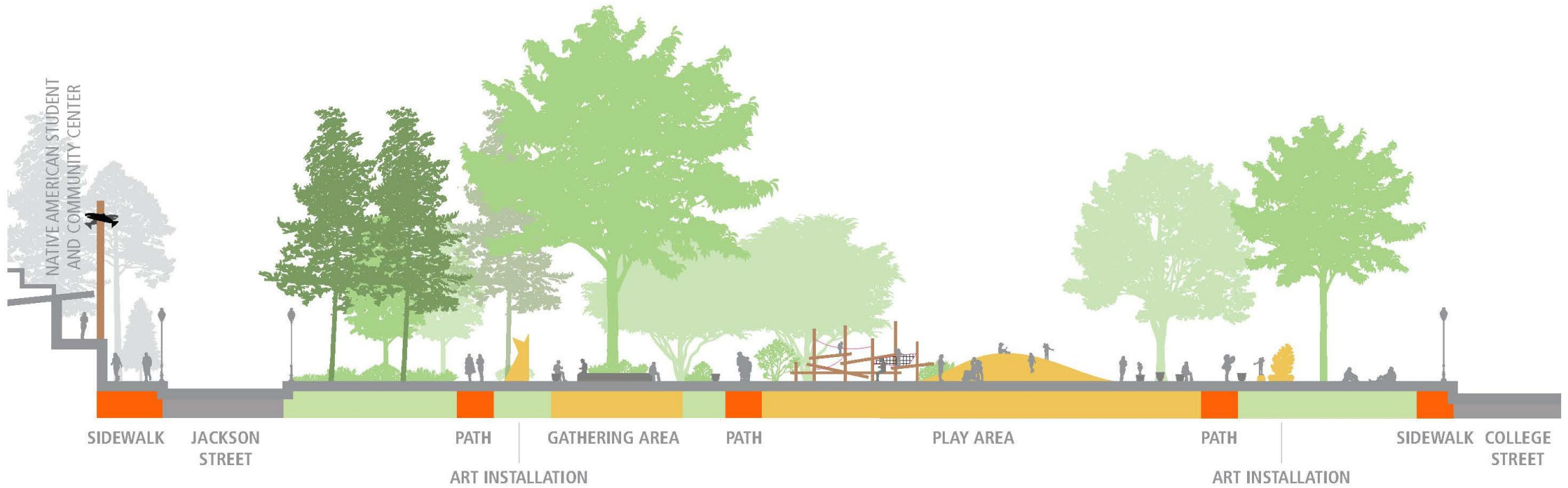
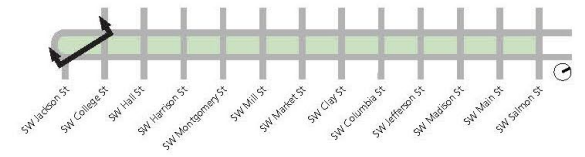
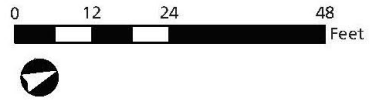


1. New connection to Native American Student and Community Center
2. Small gathering area at mature elm
3. Native planting of conifers and low ground covers
4. Play area with accessible safety surfacing
5. Sculptural thematic play feature
6. Replace lawn with native, habitat-friendly plantings to add interest at play area
7. New location for gateway art
8. Seatwall and/or benches
9. Open lawn

## LEGEND

Building Footprint	Turf / Lawn
Roadway	Tree Canopy
Pedestrian Paving	Plant Bed: Native, Ornamental, or Flower
Shared Bike / Ped Zone	Playground Safety Surfacing
Cross Walk	
Gathering Areas	
Bench / Social Seating	
Small Scale Feature / Art	

# BLOCK 1 PSU PLAYGROUND GATHERING AREA



**BLOCK 1 PSU PLAYGROUND GATHERING AREA**



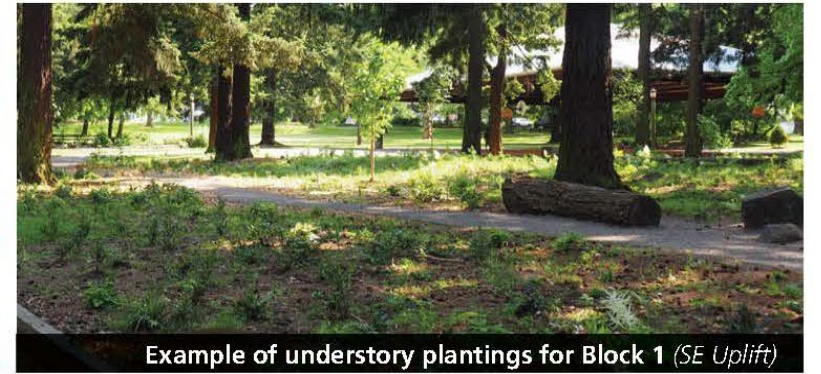
Example of interactive art and play features for Block 1 (left: Louis Helbig / right: MIG)



Example of gateway art for Block 1 (Ben Brink)



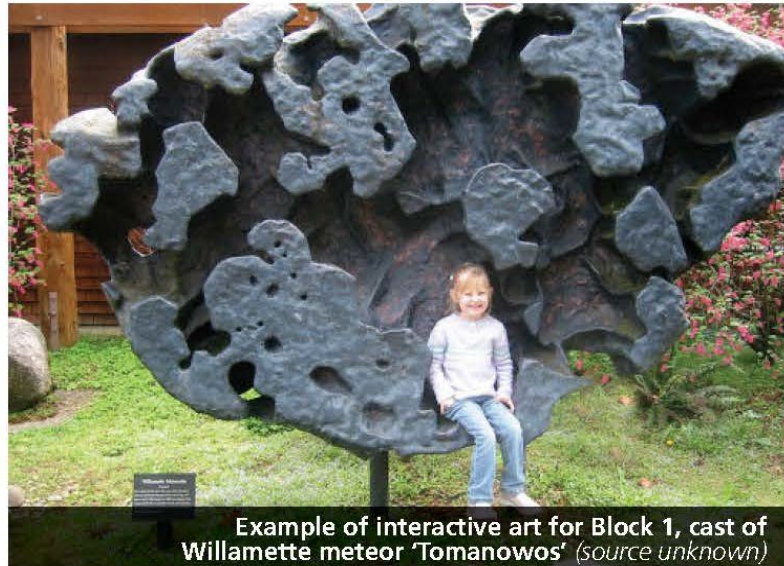
Example of social seating for Block 1 (Rios Clementi Hale Studios)



Example of understory plantings for Block 1 (SE Uplift)



Example of thematic play feature for Block 1 (Ben Brink)



Example of interactive art for Block 1, cast of Willamette meteor 'Tomanowos' (source unknown)



Example of boulder scramble for Block 1 (MIG)



1. Flexible, hardscape gathering area
2. Vehicle drop-off area
3. Green Loop paving for Block 2
4. Canopy trees and open lawn
5. Rehabilitated University District wood bench seating, typical
6. Potential stormwater facility
7. Location for future conifer tree
8. New crosswalk locations at College Street
9. Green Loop shared use path along west side of block

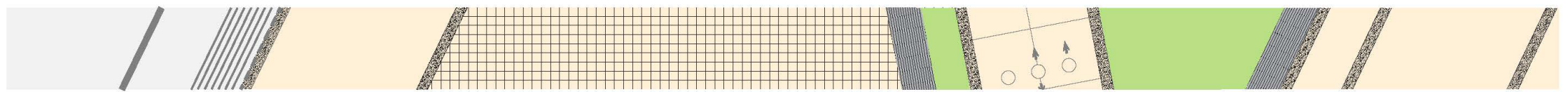
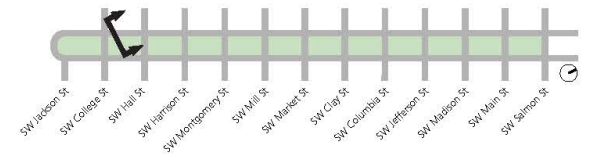
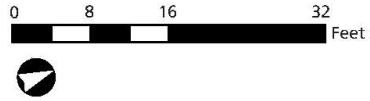
**LEGEND**

- |                           |  |
|---------------------------|--|
| Building Footprint        | Green Loop Shared Use Path (Block 2)     |
| Roadway                   | Turf / Lawn                              |
| Pedestrian Paving         | Tree Canopy                              |
| Shared Bike / Ped Zone    | Plant Bed: Native, Ornamental, or Flower |
| Cross Walk                | Playground Safety Surfacing              |
| Gathering Areas           |  |
| Bench / Social Seating    |  |
| Small Scale Feature / Art |  |



**BLOCK 2 VIKING PLAZA FLEXIBLE EVENT SPACE**

**South  
Park  
Blocks**  
MASTER PLAN

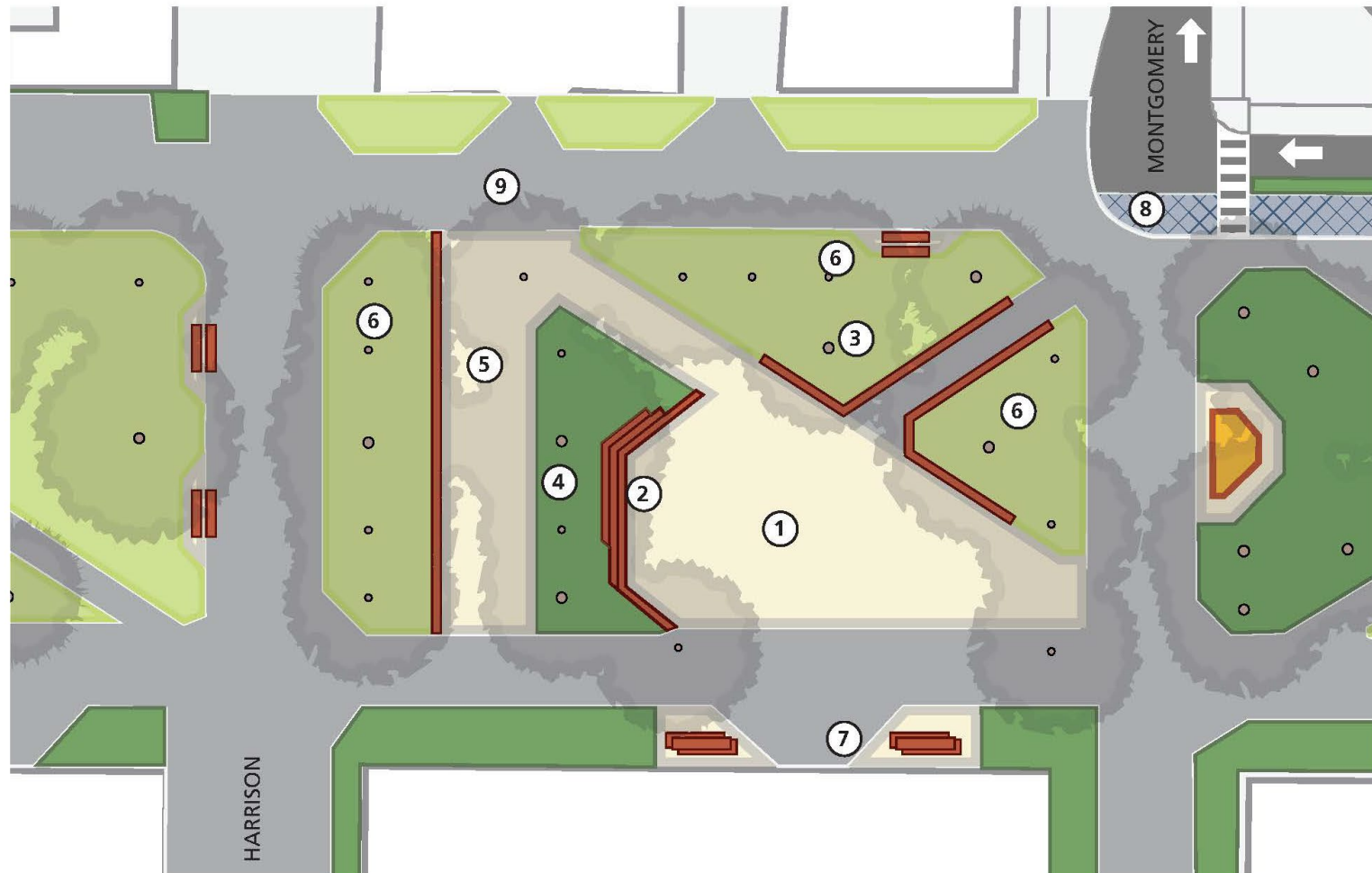
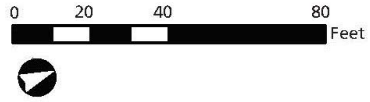


**PATH**  
**SW PARK AVE WEST**

**VIKING PLAZA**

**GREEN LOOP**  
**SHARED USE PATH**

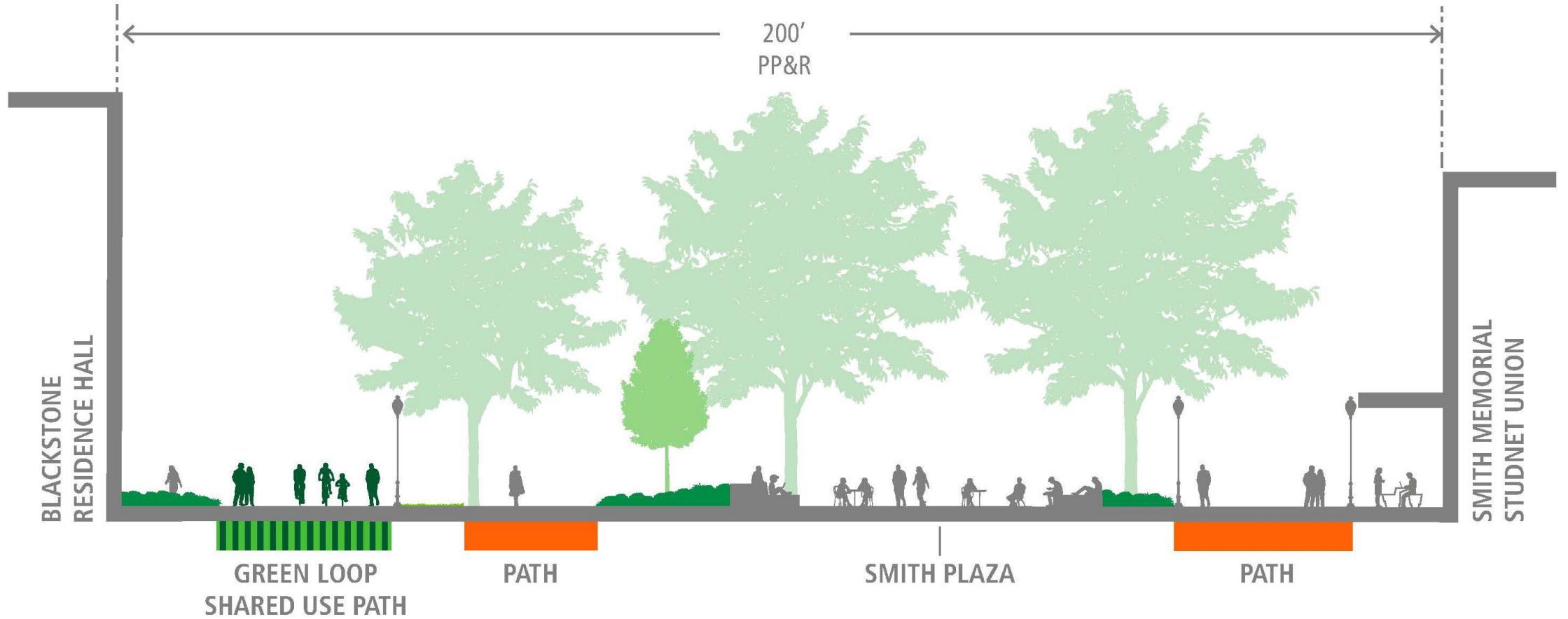
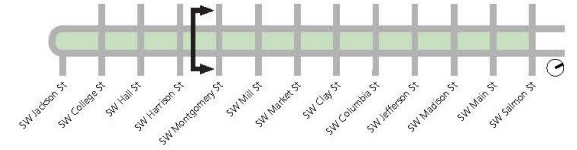
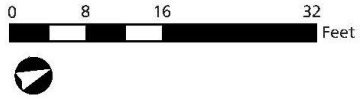
**PATH**  
**SW PARK AVE EAST**



1. Large gathering space
2. Amphitheater seating
3. Canopy trees
4. Planting bed with native and adaptive species
5. Secondary gathering space
6. Lawn or turf alternative
7. Covered outdoor study spaces adjacent to building
8. Green Loop transition area
9. Green Loop shared use path along west side of block

LEGEND

- |  |                           |  |  |
|--|---------------------------|--|--|
|  | Building Footprint        |  | Green Loop Path (Blocks 5-12)            |
|  | Roadway                   |  | Turf / Lawn                              |
|  | Pedestrian Paving         |  | Tree Canopy                              |
|  | Shared Bike / Ped Zone    |  | Plant Bed: Native, Ornamental, or Flower |
|  | Cross Walk                |  |  |
|  | Gathering Areas           |  |  |
|  | Bench / Social Seating    |  |  |
|  | Small Scale Feature / Art |  |  |





## University District Recommendations

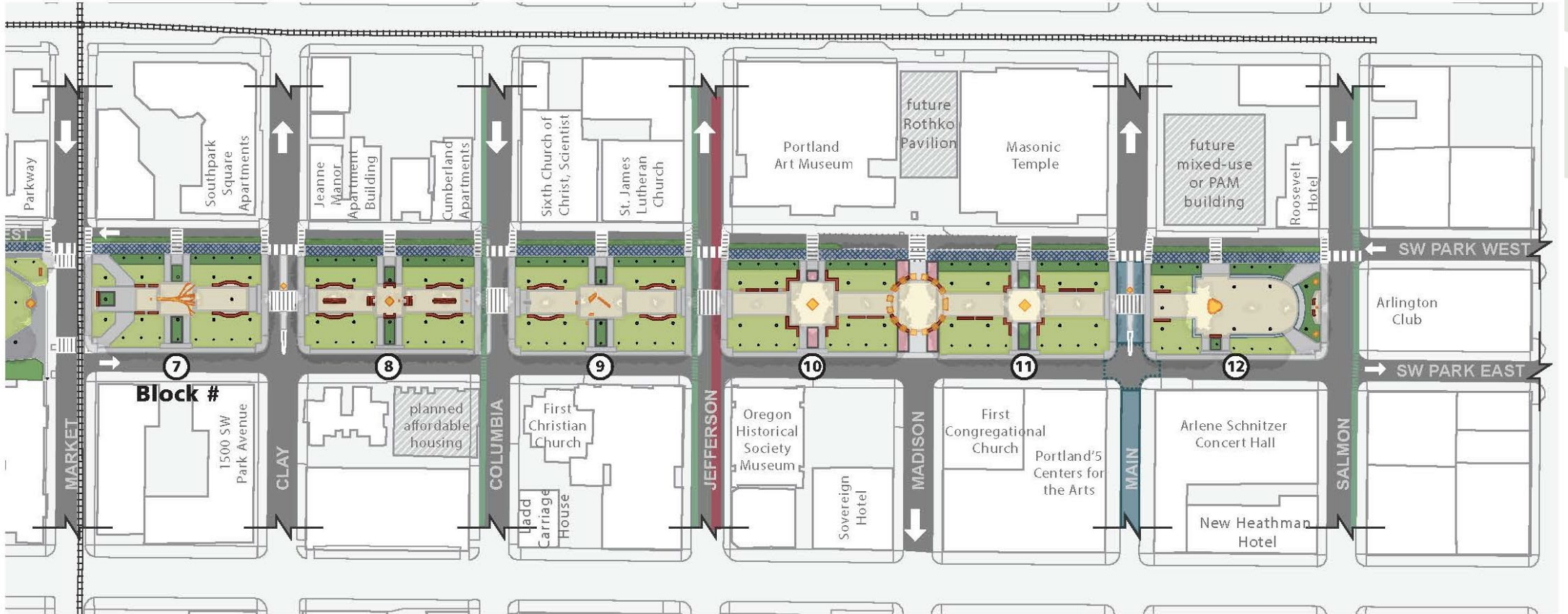
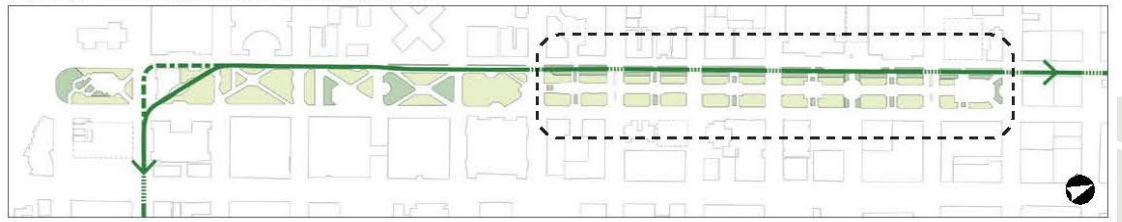
- Pathways rehabilitated over time to be more accessible
- Existing art and fountains refurbished
- Native planting opportunities for trees and understory
- Locations for rotating art exhibits at Block 5
- Green Loop shared use path



RECOMMENDED DESIGN - CULTURAL DISTRICT

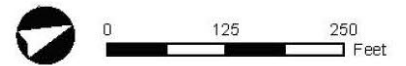
South Park Blocks MASTER PLAN

Key Map: Green Loop Recommended Alignment



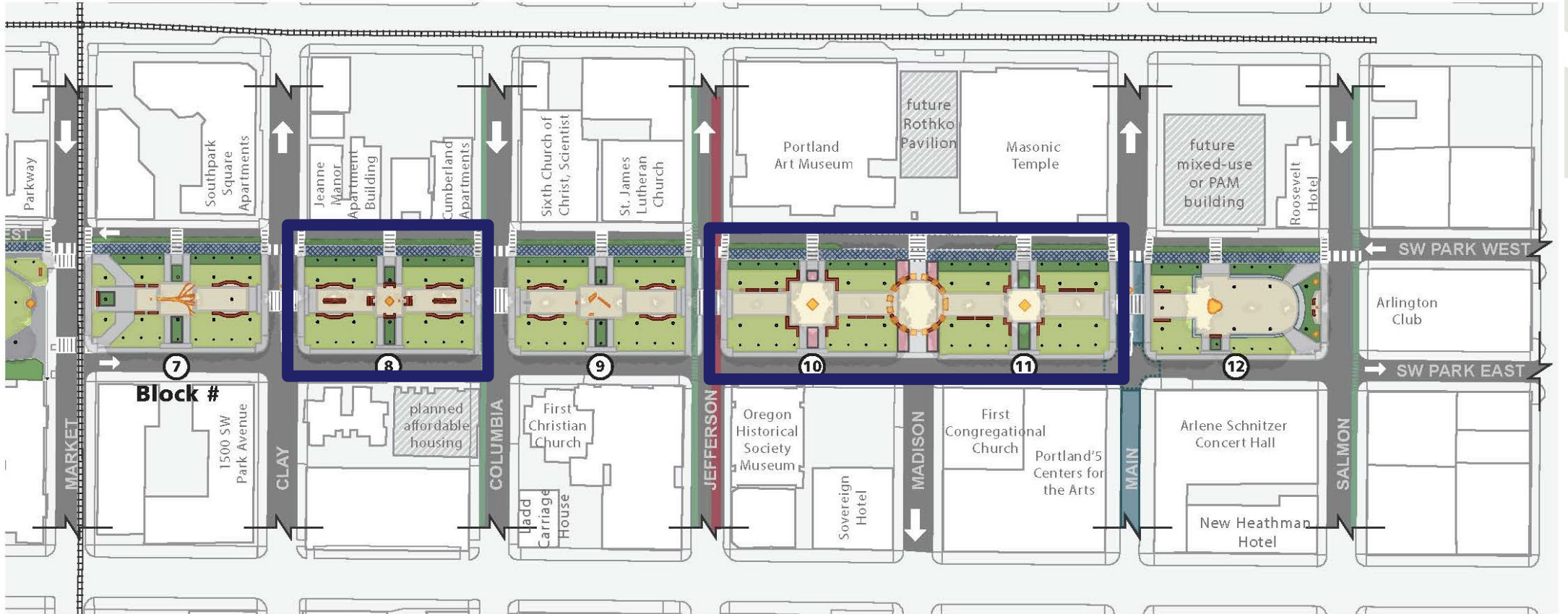
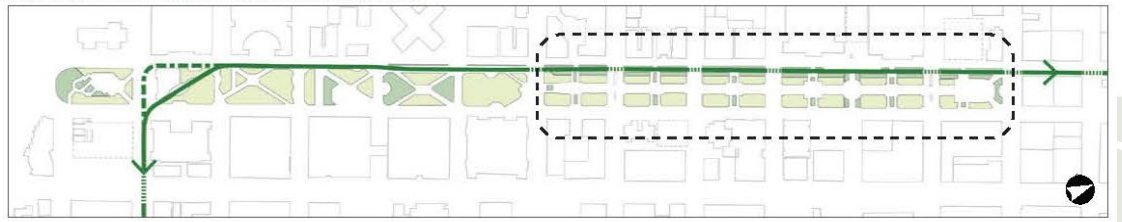
LEGEND

- Building Footprint
- Roadway
- Pedestrian Paving
- Rose Lane Project
- Green Loop Path (Blocks 5-12)
- Intersecting Bikeways
- Streetcar Line
- Cross Walk
- Gathering Areas
- Temporary Closure for Events
- Bench / Social Seating
- Small Scale Feature / Art
- Tree Canopy
- Turf / Lawn
- Raised Rose Bed
- Raised Plant Bed: Native, Ornamental, or Flower
- Plant Bed: Native, Ornamental, or Flower



**South Park Blocks**  
MASTER PLAN

Key Map: Green Loop Recommended Alignment



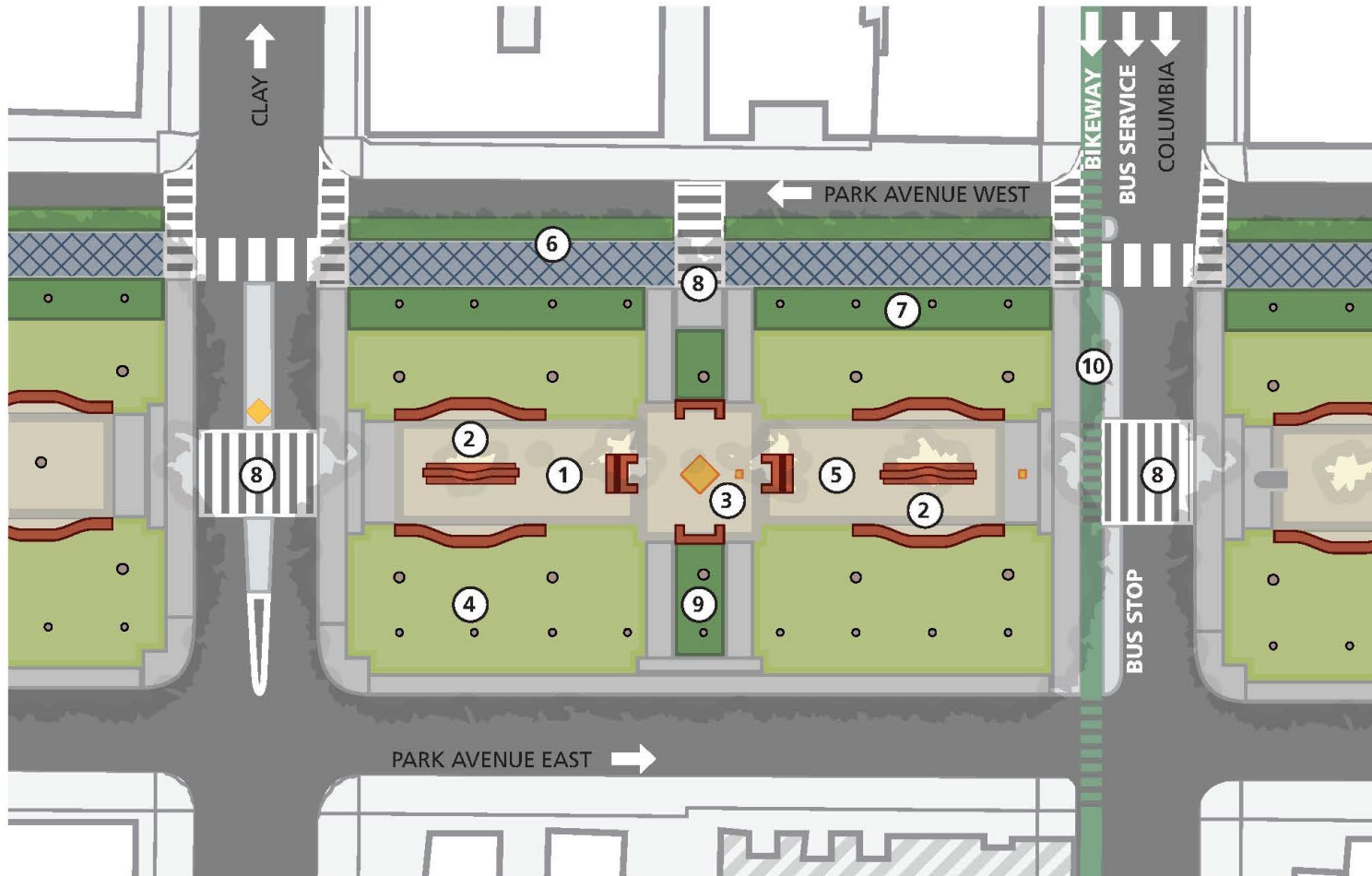
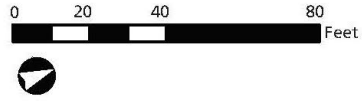
LEGEND

- |                    |                               |                              |   |
|--------------------|-------------------------------|------------------------------|---|
| Building Footprint | Green Loop Path (Blocks 5-12) | Gathering Areas              | Tree Canopy                                     |
| Roadway            | Intersecting Bikeways         | Temporary Closure for Events | Turf / Lawn                                     |
| Pedestrian Paving  | Streetcar Line                | Bench / Social Seating       | Raised Rose Bed                                 |
| Rose Lane Project  | Cross Walk                    | Small Scale Feature / Art    | Raised Plant Bed: Native, Ornamental, or Flower |
|                    |                               |                              | Plant Bed: Native, Ornamental, or Flower        |



**BLOCK 8 NEIGHBORHOOD BLOCK**

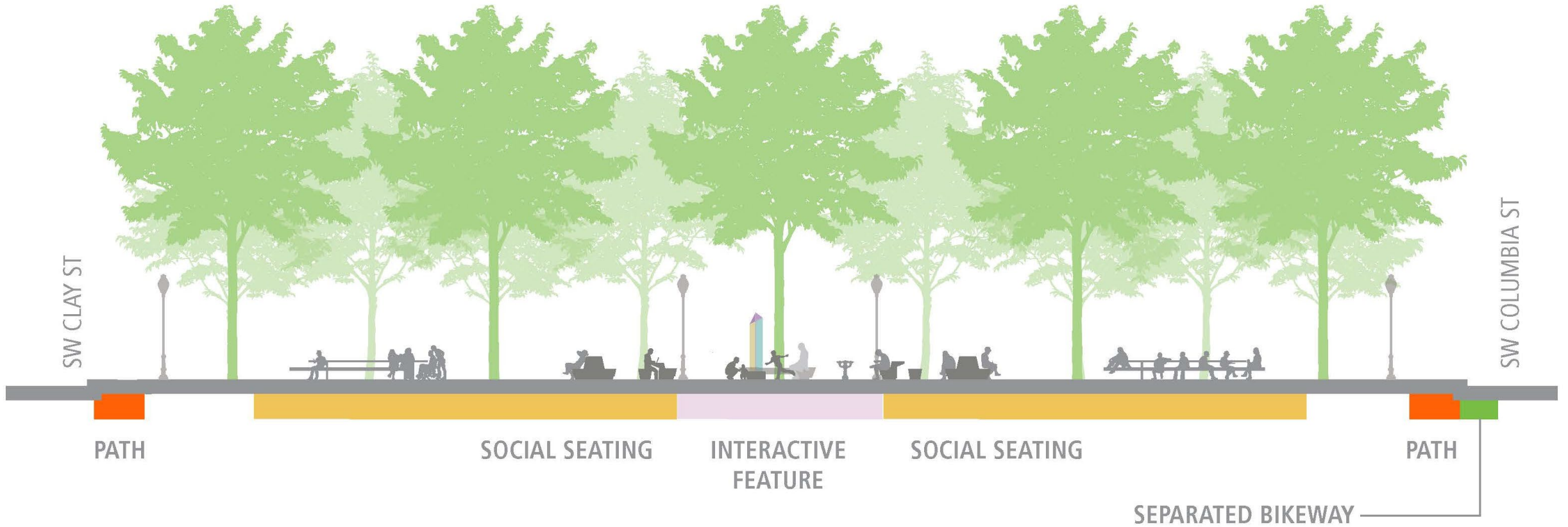
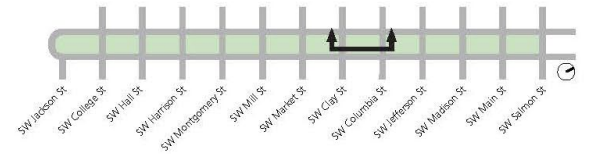
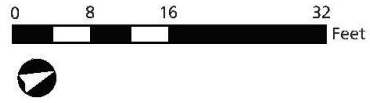
**South  
Park  
Blocks  
MASTER PLAN**



1. Central promenade supports pedestrian movement
2. Social seating
3. Location for interactive art, Benson Bubbler remains
4. Canopy trees
5. Replace existing walkways with new reinforced concrete paving
6. Green Loop separated path along west side of block and median strip planting
7. Understory planting of native and adapted plants
8. Midblock crossing location
9. Native and adapted planting at east-west ornamental planters
10. Central City in Motion planned bike lane

**LEGEND**

- |                           |  |
|---------------------------|--|
| Building Footprint        | Green Loop Path (Blocks 5-12)            |
| Roadway                   | Intersecting Bikeways                    |
| Pedestrian Paving         | Streetcar Line                           |
| Gathering Areas           | Cross Walk                               |
| Bench / Social Seating    | Turf / Lawn                              |
| Small Scale Feature / Art | Tree Canopy                              |
|                           | Plant Bed: Native, Ornamental, or Flower |







**Example of social seating for Block 8** (*mmcité*)



**Example of communal table and benches for Block 8**  
(left: Fletcher Studio / right: Wallace Liu)



**Examples of interactive art for Block 8**  
(left: Downtown GR / right: Fanny Allie)



**Example of appropriate scale of social seating for Block 8**  
(*Jason DeSomer*)

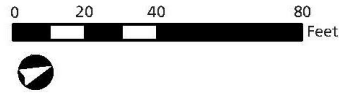


**Example of interactive art for Block 8** (*Mad. Sq. Pk.*)

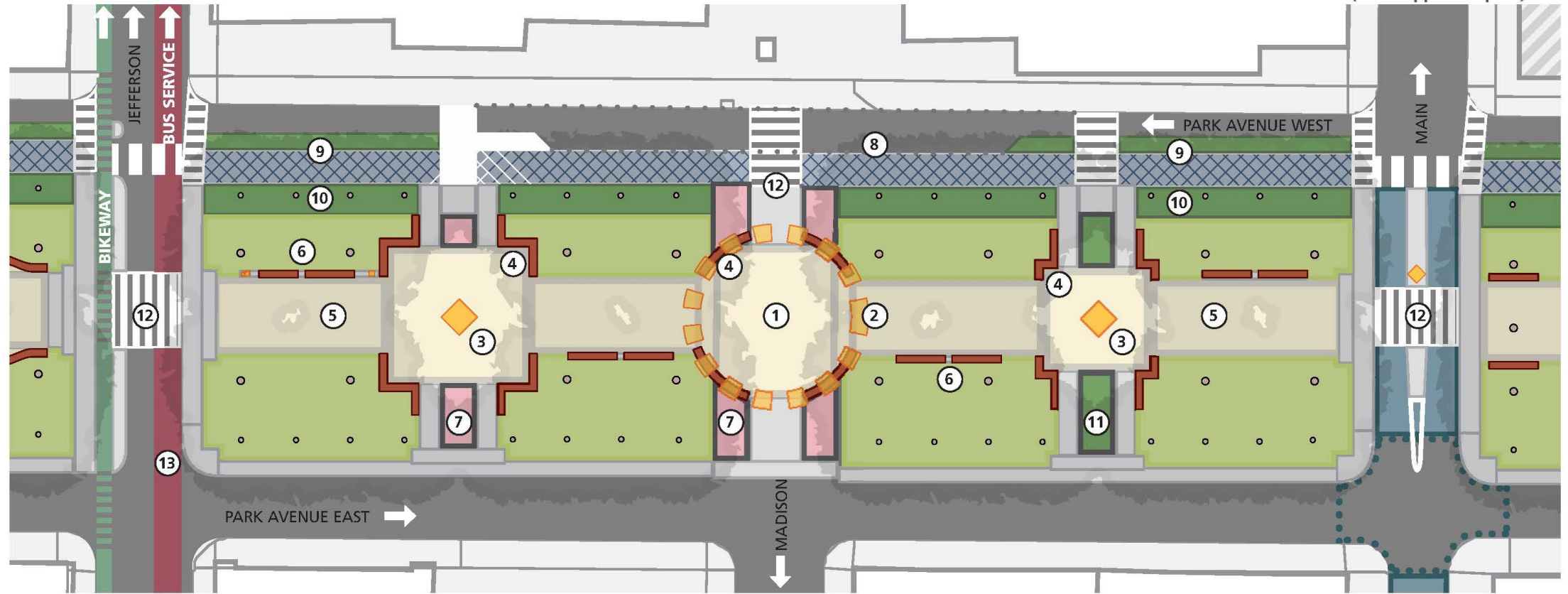


**Example of separated path and planted buffer for Block 8** (*NV5*)

**BLOCKS 10 AND 11 CULTURAL DISTRICT SQUARES**

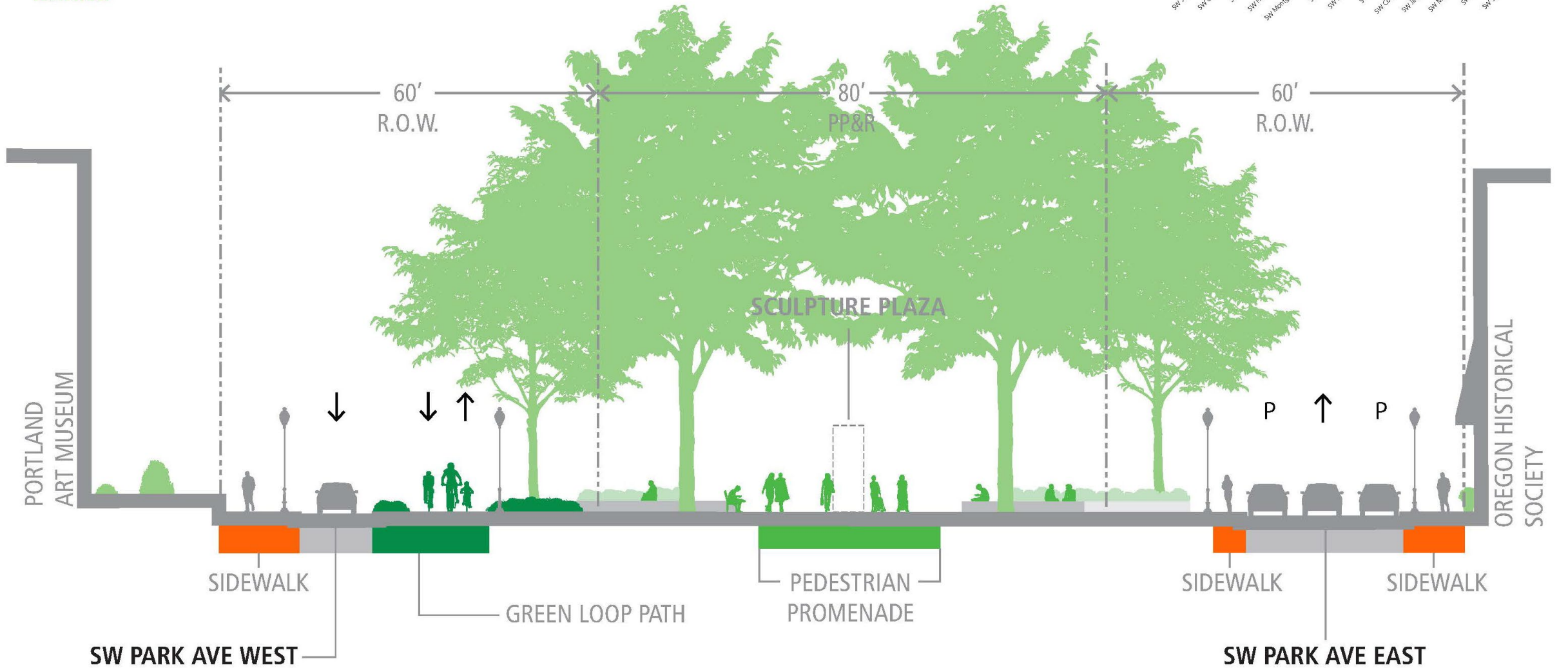
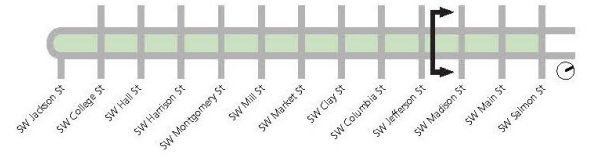
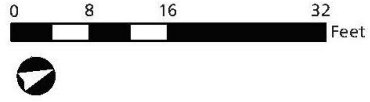


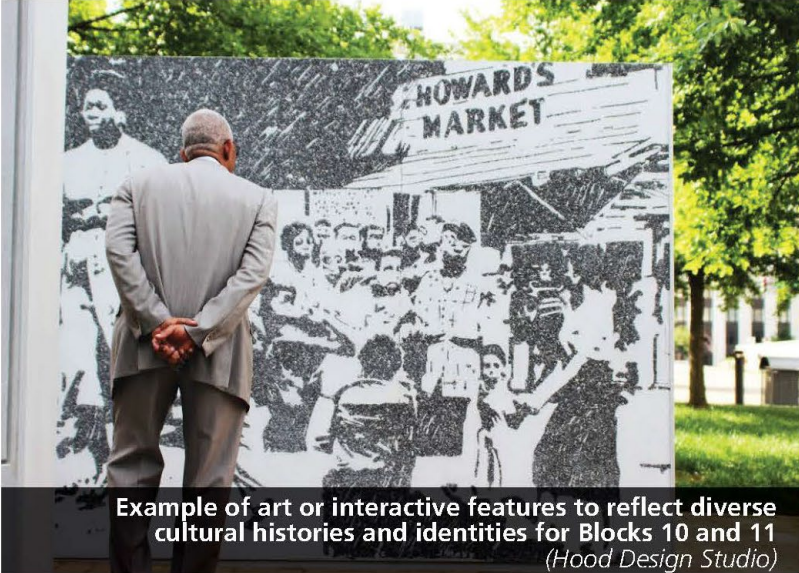
- 1. Flexible programmable plaza at closed Madison Street
- 2. Vertical landmark
- 3. Sculpture plaza
- 4. Social seating
- 5. Central promenade
- 6. Promenade seating
- 7. Roses at east-west ornamental planters, typ.
- 8. Park Ave West drop off area
- 9. Green Loop separated path along west side of block and median strip planting
- 10. Understory planting of native and adaptive plants
- 11. Native and adaptive planting at east-west ornamental planters, typ.
- 12. Midblock crossing location
- 13. Future Rose Lane Project bus lane (PBOT approved plan)



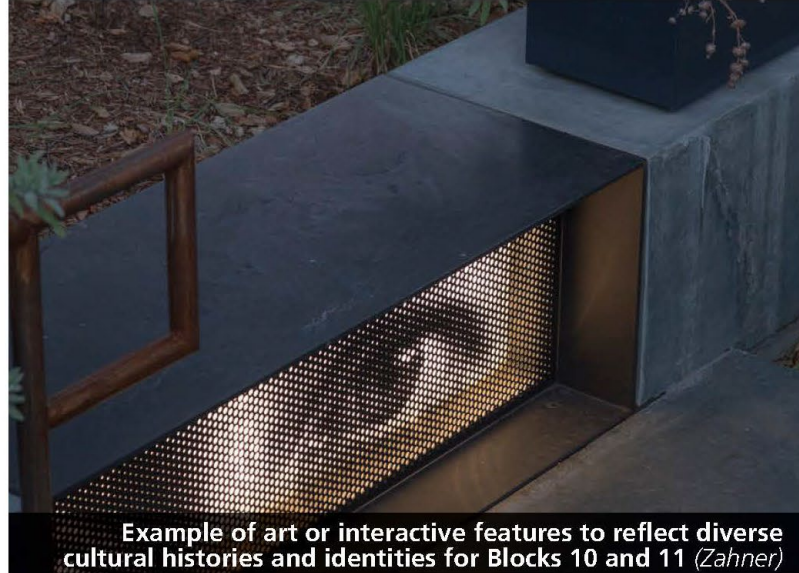
**LEGEND**

- |                    |                               |                              |   |
|--------------------|-------------------------------|------------------------------|---|
| Building Footprint | Green Loop Path (Blocks 5-12) | Gathering Areas              | Tree Canopy                                     |
| Roadway            | Intersecting Bikeways         | Temporary Closure for Events | Turf / Lawn                                     |
| Pedestrian Paving  | Streetcar Line                | Bench / Social Seating       | Raised Rose Bed                                 |
| Rose Lane Project  | Cross Walk                    | Small Scale Feature / Art    | Raised Plant Bed: Native, Ornamental, or Flower |
|                    |                               |                              | Plant Bed: Native, Ornamental, or Flower        |





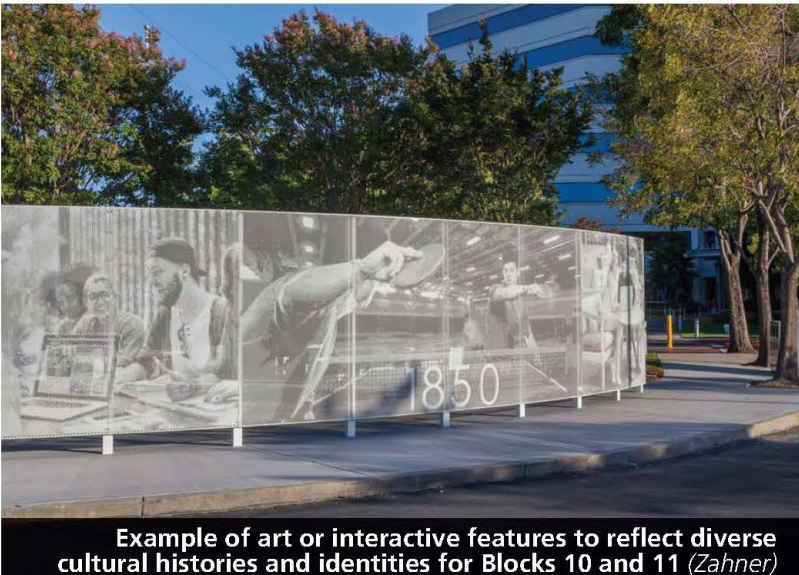
Example of art or interactive features to reflect diverse cultural histories and identities for Blocks 10 and 11 (Hood Design Studio)



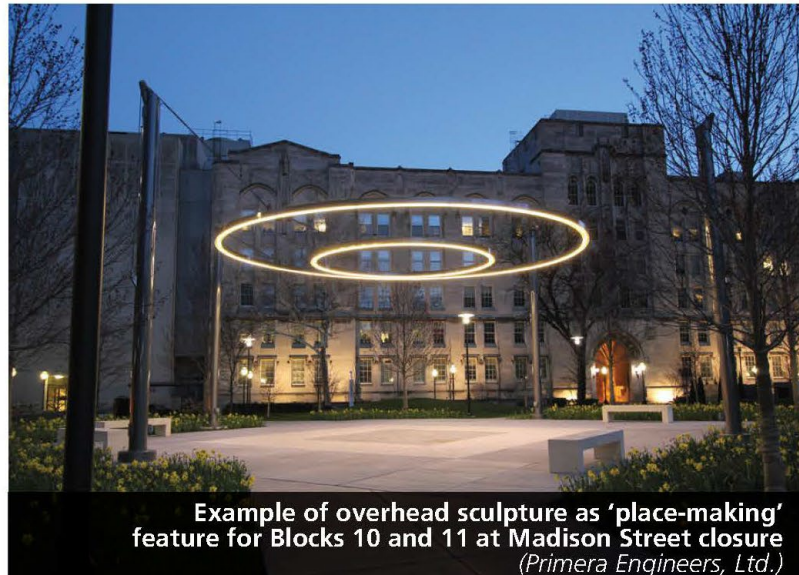
Example of art or interactive features to reflect diverse cultural histories and identities for Blocks 10 and 11 (Zahner)



Example of overhead sculpture as 'place-making' feature for Blocks 10 and 11 at Madison Street closure (Turenscape)



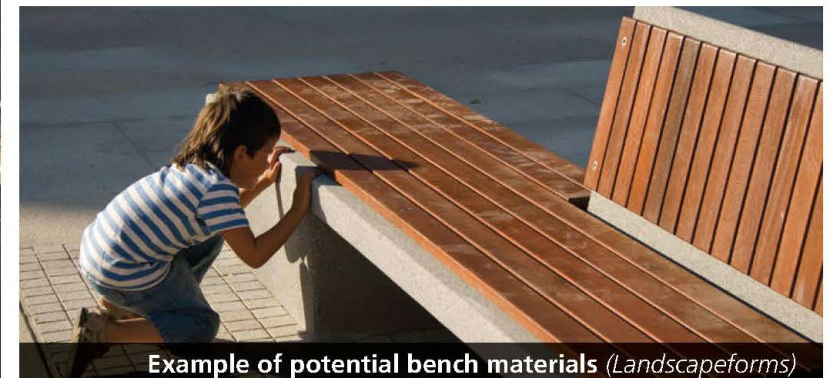
Example of art or interactive features to reflect diverse cultural histories and identities for Blocks 10 and 11 (Zahner)



Example of overhead sculpture as 'place-making' feature for Blocks 10 and 11 at Madison Street closure (Primera Engineers, Ltd.)



Example of interactive social seating for promenade flanking Madison (mmcité)



Example of potential bench materials (Landscapeforms)



## Cultural District Recommendations

- Existing art refurbished and surfaces rehabilitated
- Modified benches promoting more social interaction
- Central planters relocated and central trees replanted in different locations
- Green Loop path replaces parking and sidewalk along edge of park





# Tree Succession Strategy

- A long-term guide for replacing trees after existing ones reach the end of their life spans
- Balances goals for improving the growing conditions and resiliency of the urban forest while maintaining historic character of the trees
- More detailed design will work towards preventing removal and optimizing additional planting locations



# TREE SUCCESSION STRATEGY // UNIVERSITY DISTRICT





Existing Trees 2019



Tree Succession Strategy Long-term Vision



**LEGEND**

-  American elm-like large stature tree  
(See University District center tree type)
-   Large and medium stature deciduous trees, with preference for large where space available (See University District edge tree type)
-  Evergreen trees (See University District evergreen tree type)

# TREE SUCCESSION STRATEGY // CULTURAL DISTRICT

## Existing Trees 2019



## Tree Succession Strategy Long-term Vision





# EXISTING



**GREEN LOOP PATH**

12'

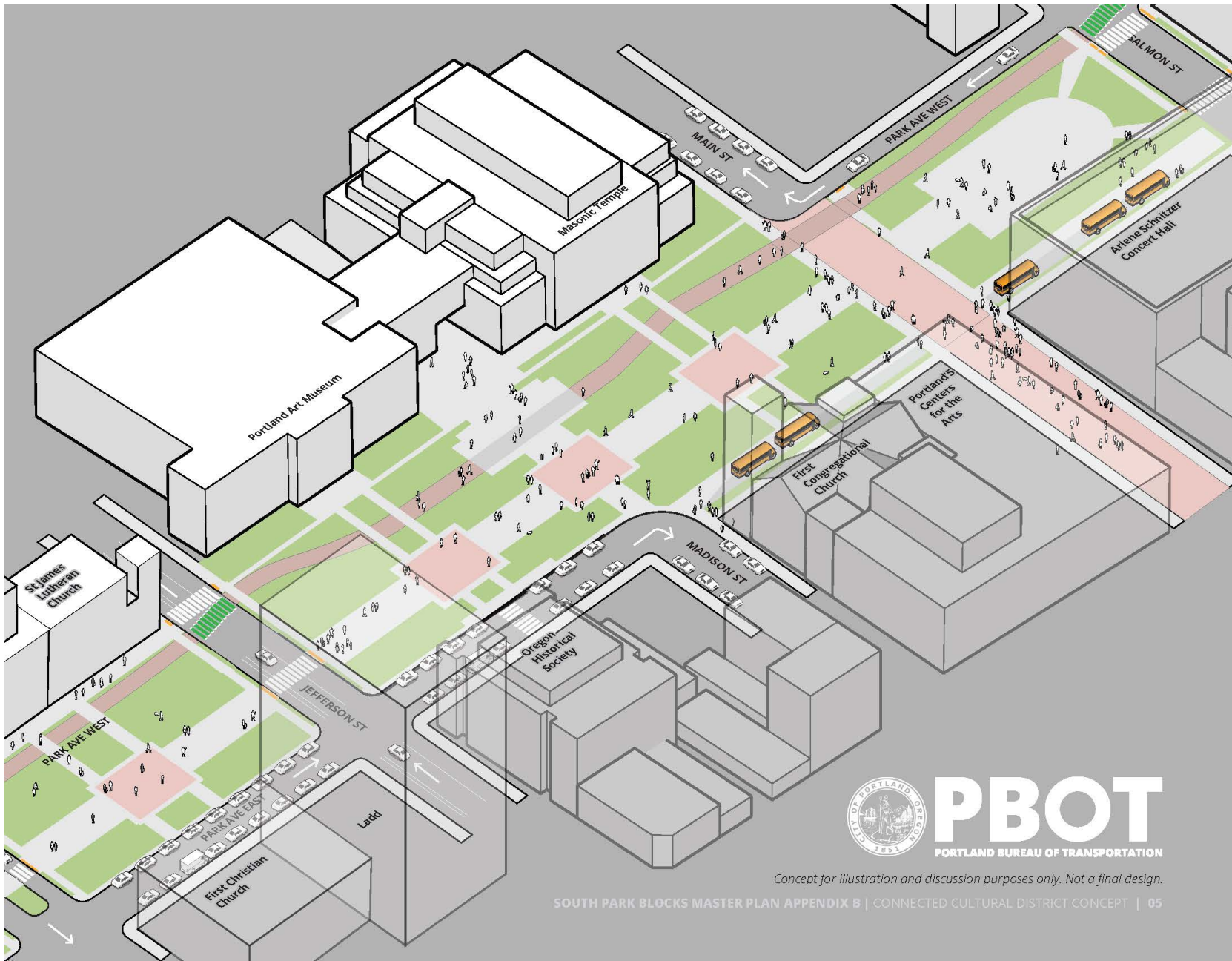
**BUFFER**

6'

# PROPOSED



**PBOT**  
PORTLAND BUREAU OF TRANSPORTATION



Concept for illustration and discussion purposes only. Not a final design.

SOUTH PARK BLOCKS MASTER PLAN APPENDIX B | CONNECTED CULTURAL DISTRICT CONCEPT | 05

SOUTH PARK BLOCKS MASTER PLAN RECOMMENDATION



# TRAFFIC-FREE GREEN LOOP

Park Avenue West between SW Jefferson & SW Columbia. This alternative design concept extends the Park Blocks to the edge of bordering properties with a traffic-free environment.



Visualizations are for illustration purposes only and do not represent a final design design that would better reflect the park master plan and accessibility considerations.

TRAFFIC-FREE GREEN LOOP CONCEPT VISUALIZATION

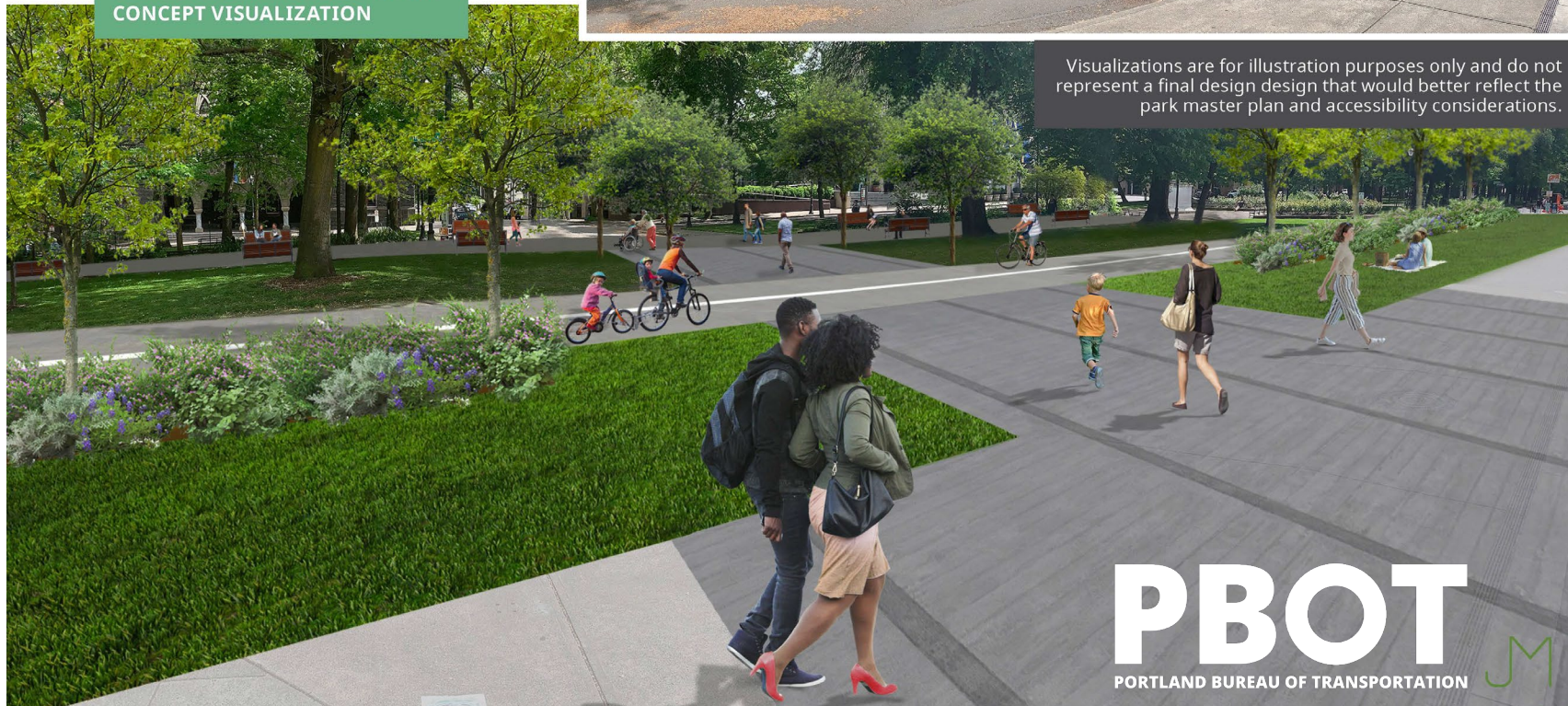


**PBOT**  
PORTLAND BUREAU OF TRANSPORTATION

# PORTLAND ART MUSEUM

Park Avenue West by the Portland Art Museum facing Southeast toward First Congregational Church and the Oregon Historic Society. Streets become expanded plaza spaces.

## CONNECTED CULTURAL CAMPUS CONCEPT VISUALIZATION



## EXISTING CULTURAL CAMPUS BLOCKS



Visualizations are for illustration purposes only and do not represent a final design design that would better reflect the park master plan and accessibility considerations.

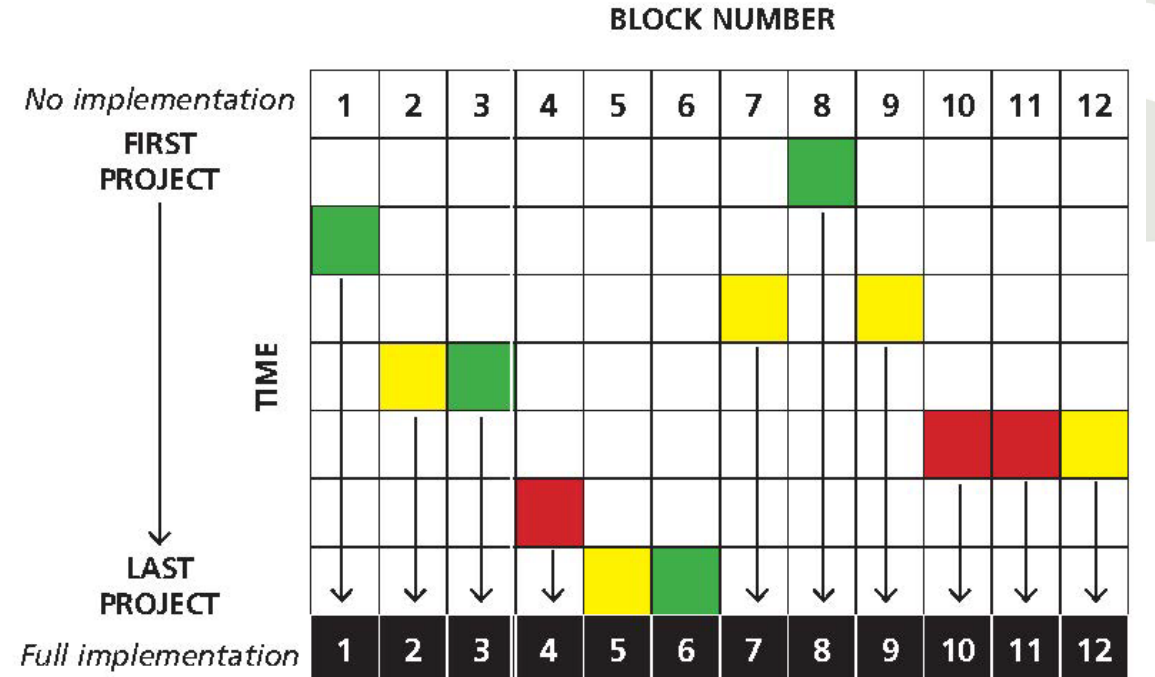




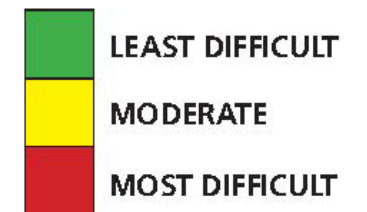
## Phased Implementation:

- A small amount of public benefit funding is available for Block 8
- Recommended projects will go on the PP&R Capital Improvement Project List that is prioritized with an equity lens
- Implementation will be phased over time; recommendations made for efficiency and cost savings

### POTENTIAL CONSTRUCTION SEQUENCING



#### TECHNICAL DIFFICULTY





## Cost Estimates:

- For planning purposes, acceptance of the master plan **does not** allocate these funds.
- Low to high ranges for park improvements with combined estimates ranging from \$23 to \$47 million
- Separate cost estimates for the Green Loop under \$8 million

Order of Magnitude Costs for the South Park Blocks Recommended Design			
Description	Park (Low)	Park (Higher)	Green Loop
Block 1	\$2,071,200	\$4,067,700	\$307,654
Blocks 2-3	\$3,794,900	\$7,286,300	\$1,169,414
Block 4	\$1,647,100	\$4,650,100	
Blocks 5-6	\$4,413,500	\$7,989,800	\$1,194,726
Block 7	\$1,783,600	\$4,613,700	\$2,744,544
Block 8	\$2,511,600	\$4,877,600	
Block 9	\$919,199	\$2,229,500	
Block 12	\$2,027,025	\$3,844,300	
Blocks 10-11	\$3,712,800	\$7,048,500	\$1,941,792
<b>Total</b>	<b>\$22,880,767</b>	<b>\$46,607,521</b>	<b>\$7,358,130</b>



## Community-influenced Directions:

- Balance contemporary needs with maintaining historic, character-defining features
- Optimize opportunities for reconciliation and healing through the landscape and park features
- Promote inclusive design so each block meets or exceeds accessibility codes and standards
- Increase safety with improved sight lines to provide park users natural surveillance and features for passive use and activation







## Community-influenced Directions *continued...*

- Create opportunities for interaction and learning among different groups
- Represent more diverse cultural histories and identities in art, landscaping, and other park features
- Prioritize pedestrian and bicycle safety through incorporation of Green Loop facilities
- Provide elements to unify all 12 blocks while acknowledging and supporting the different histories, functions, and needs





PORTLAND PARKS & RECREATION<sup>SM</sup>

Healthy Parks, Healthy Portland

Thank you!

