



ANTI-DISPLACEMENT ACTION PLAN

Planning for inclusive neighborhoods and
communities without displacement

Dwight Jefferson, Andrea Pastor, Kathryn Hartinger

BPS ADAP Team



THE BUREAU OF
**PLANNING &
SUSTAINABILITY**

Agenda

- Foundation Report Highlights
- Current Work, Next Steps
 - Update Analytic Tools
 - Investment Framework
 - Accountability Framework
 - Capacity-Building, Public Workshops





Foundation Report Highlights



THE BUREAU OF
**PLANNING &
SUSTAINABILITY**

Defining Displacement

Displacement: Households or businesses involuntarily forced to move from a neighborhood because of increasing market values, rents, or changes in the neighborhood's ability to meet basic needs in the case of households, or erosion of traditional client base in the case of businesses.

-- City of Portland 2035 Comprehensive Plan

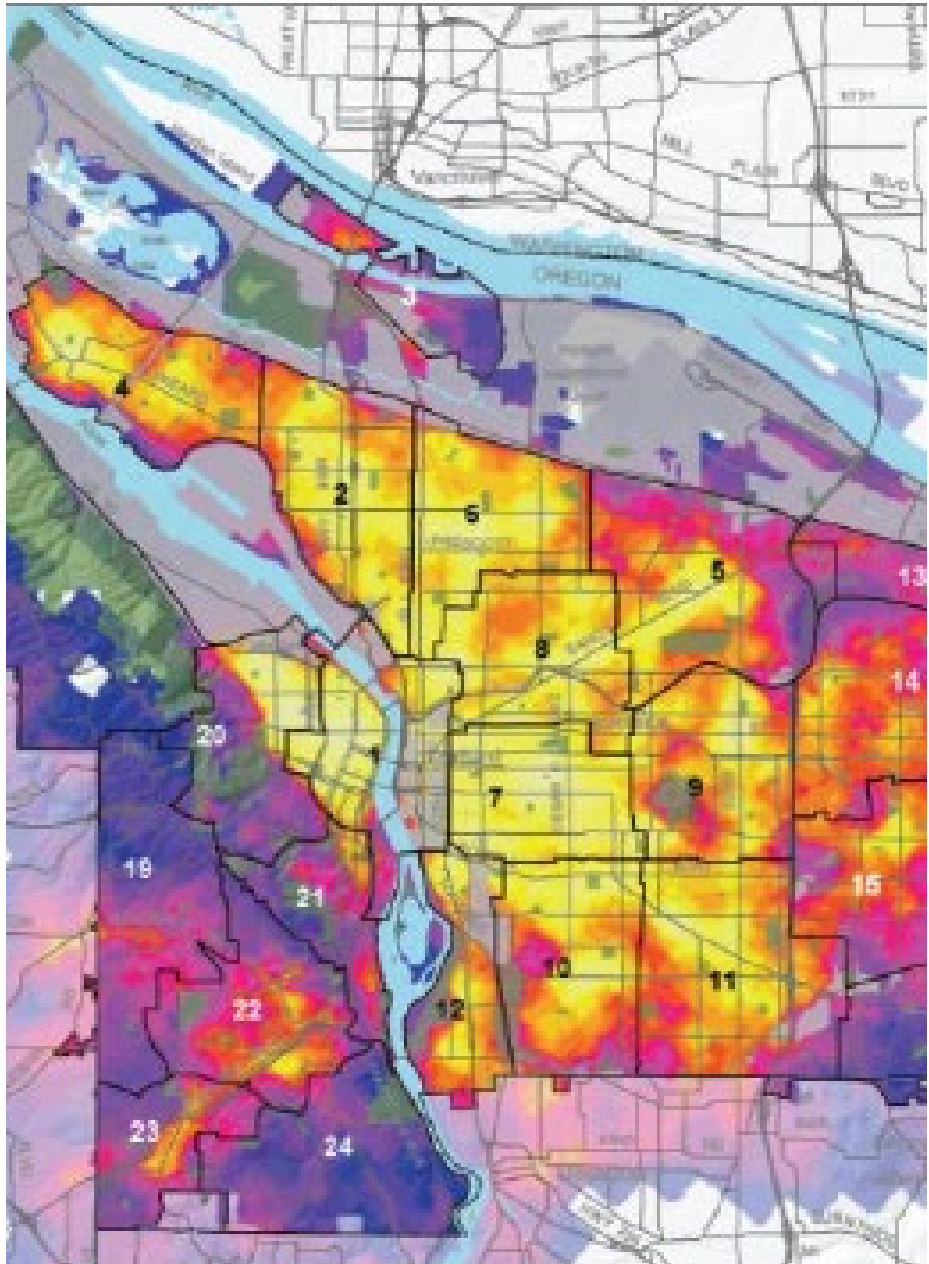
Policy Framework

- Community empowerment
- Economic opportunity
- Affordable housing and tenant protections
- Environmental justice
- Leverage private investment for public benefit
- Analyze impact, advance equity, mitigate harm



Analysis



- Equity Analysis Tools
- Opportunity & Risk Mapping




Action

- Housing
- Commercial/Business
- Workforce
- Cultural Displacement and Community Resilience




Housing Displacement Programs – Homeowner Assistance

Tool	Description	Implementing organization	Detail & potential for evaluation	Equitable development building block
Foreclosure Prevention	Provides funding to community partner organizations that assist homeowners with resources to avoid foreclosure.	PHB	Low income homeowners who are struggling to make mortgage payments can reach out to partner organizations to request classes and counseling. Outcomes can be tracked through currently available methods.	 Invest in anti-displacement tools and economic opportunity
Utility safety net	Ensures all customers, including sewer-only customers, have access to financial assistance.	PWB and BES	PWB and BES both contribute to a citywide system of financial assistance for households experiencing an economic crisis or ongoing shortfall. Revenue Programs closely works with the financial assistance team to ensure all customers, including sewer-only.	 Improve access to transit and services

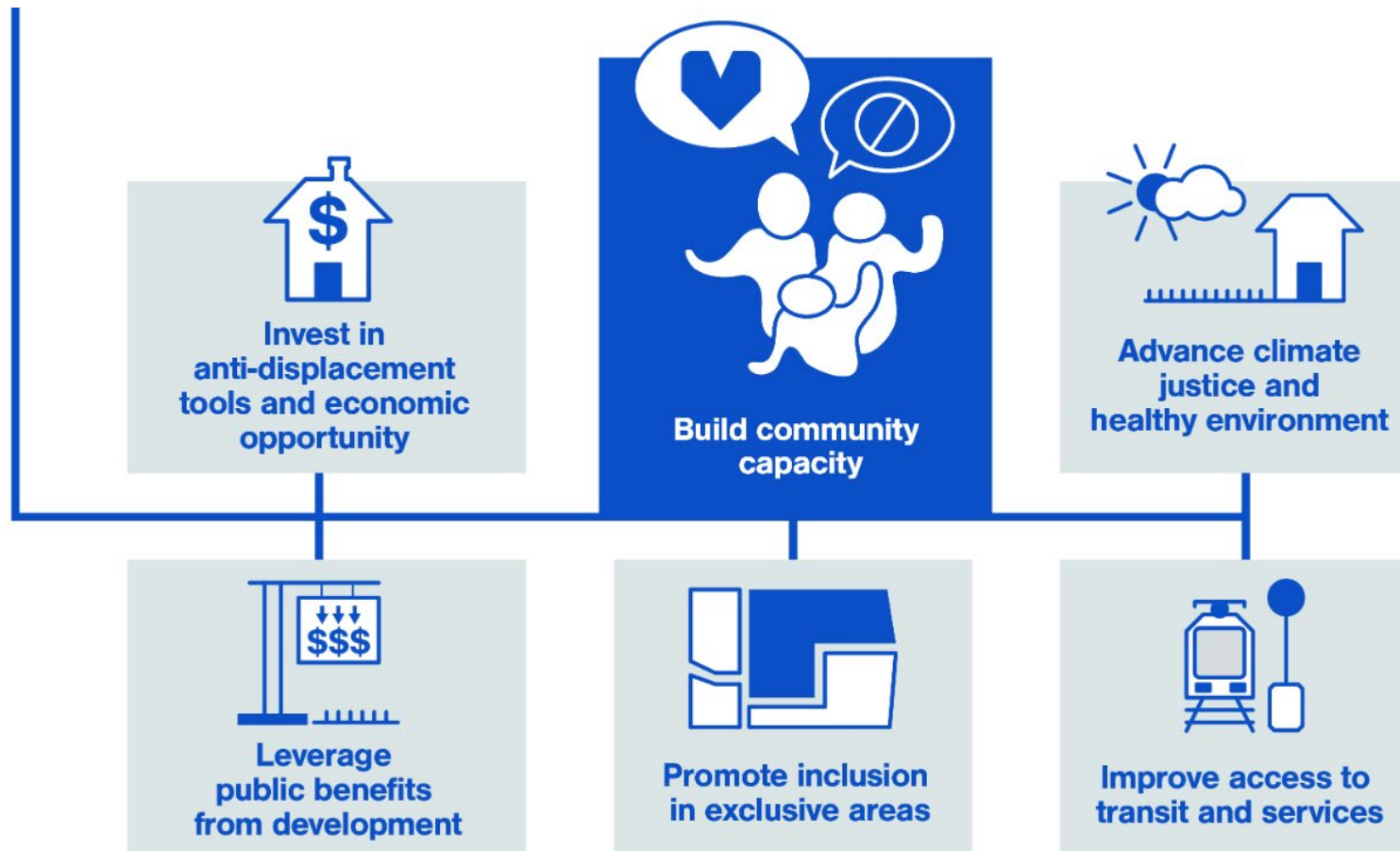
COMMERCIAL DISPLACEMENT PROGRAMS

Current Program	Program description	Responsible Agency	Access to Capital	Affordable Commercial Space	Technical Assistance	Detail & potential for evaluation	Equitable Communities Building Block
Prosper Emergency Grant and Loans	Grants and loans for businesses or nonprofit organizations affected by public health emergency closures.	Prosper Portland	X			Targeted toward minority and women-owned businesses who were facing direct losses due to COVID-19. Program resources were distributed using equity lens.	 Invest in anti-displacement tools and economic opportunity
Inclusive	Contracts with CBOs	Prosper	X		X	Outcomes-based evaluation	

Childcare Support – Efforts to make childcare more readily available and affordable

Current Program	Program description	Responsible for implementation	Detail & potential for evaluation	Equitable Communities Building Block
Inclusive Business Resource Network	Connects childcare providers with a peer-to-peer network of other small business owners for support, guidance and professional development.	Prosper Portland	Childcare Improvement Project resources particular to Latinx and Slavic in-home childcare providers. Available citywide. Outcomes measured are number of providers who achieve licensure as well as stabilize and grow their business.	 Build community capacity  Invest in anti-displacement tools and economic opportunity
Summer Parks Programming & Community Center Pre-school Programs	Provides affordable childcare and pre-school at community centers, and free programming at parks where federal lunch program is administered.	PP&R	Parks programming has been severely curtailed by pandemic. Typically, summer programs have offered affordable childcare throughout the city, with significant scholarships available for low income families.	 Invest in anti-displacement tools and economic opportunity  Improve access to transit and services

Building Blocks for Equitable Communities

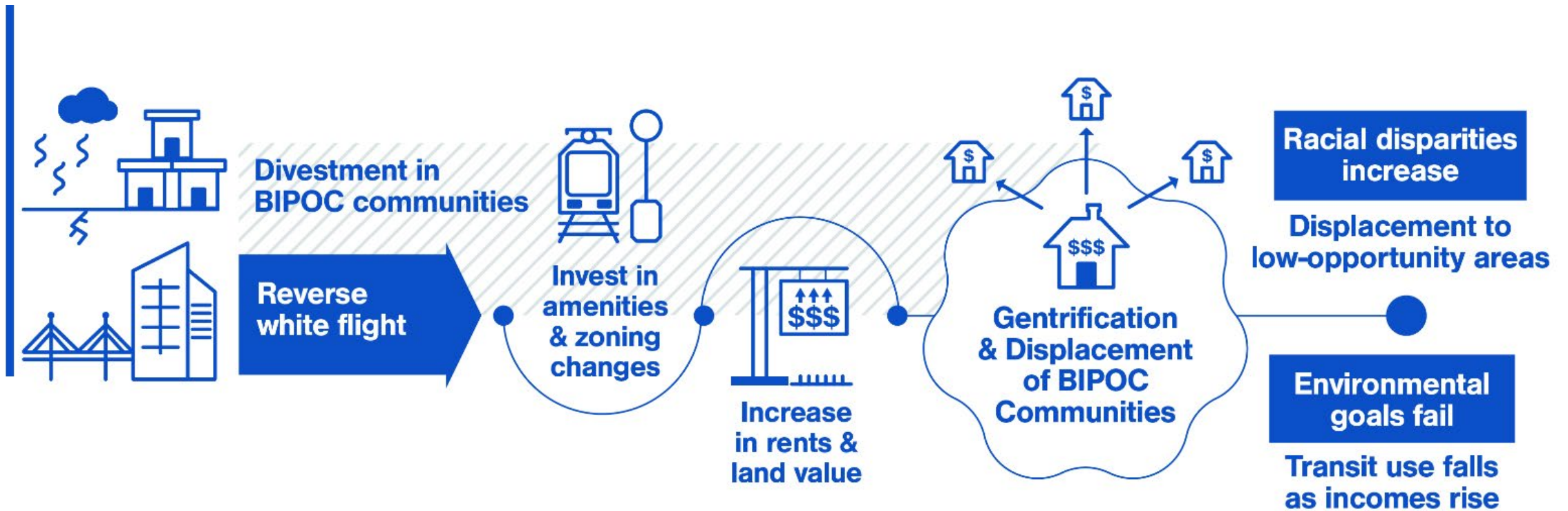


Equitable Communities Framework

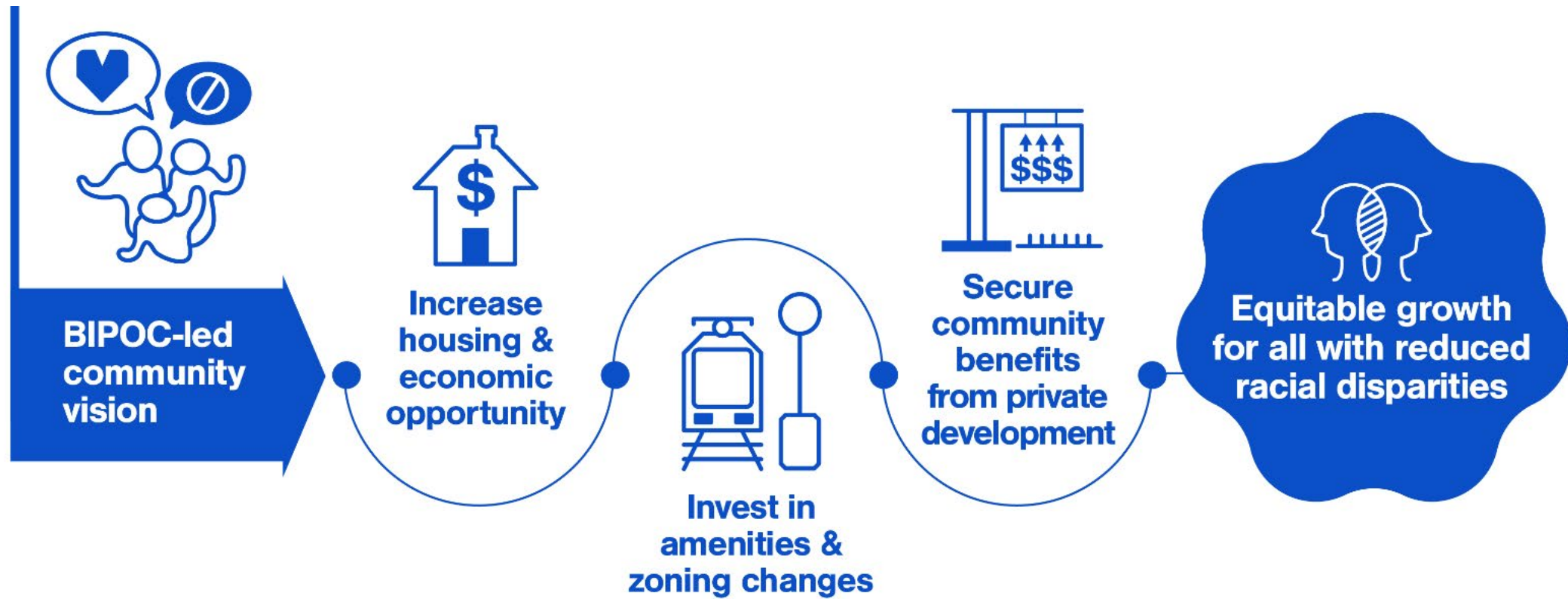
- Goals
- Analysis
- Building Blocks and Roles



Dynamics of Displacement



A New Approach for Equitable Outcomes





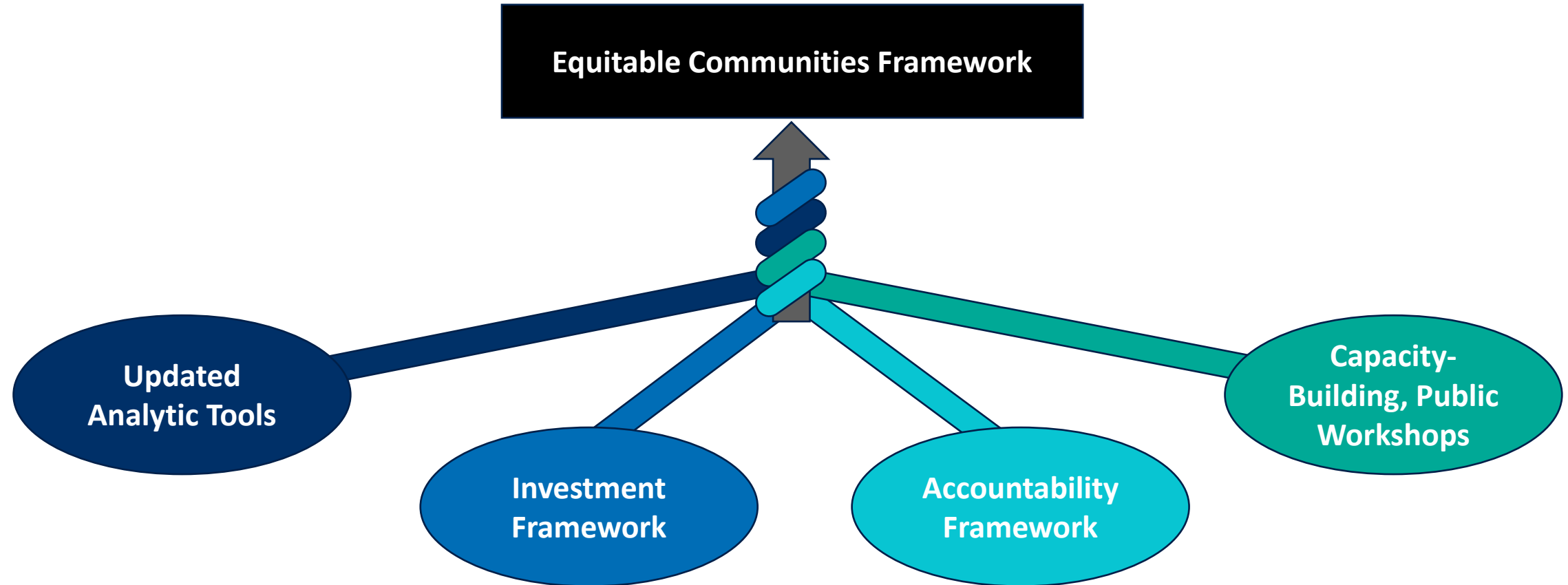
Current Work, Next Steps

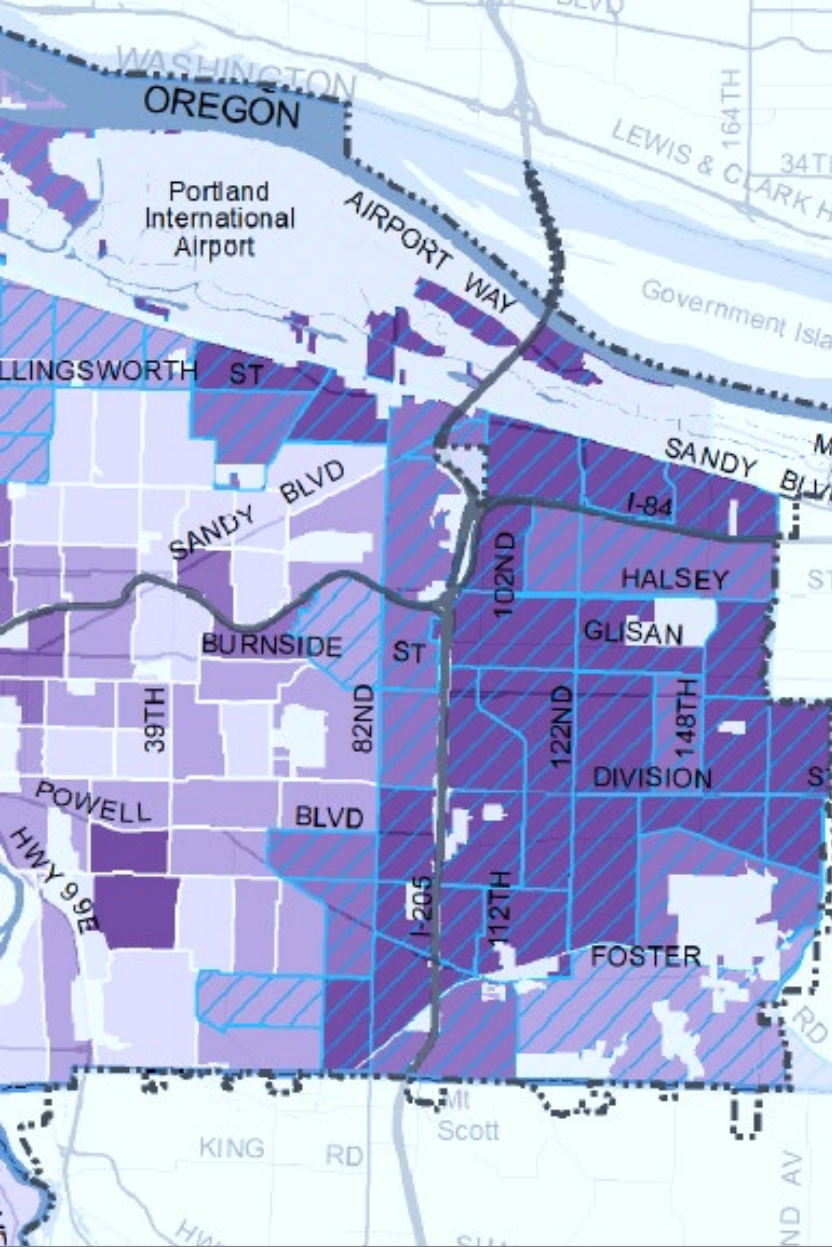


THE BUREAU OF
**PLANNING &
SUSTAINABILITY**

Operationalize Comprehensive Plan Policies

Citywide Alignment & Coordination





Updated Analytic Tools

- Update citywide vulnerability, displacement risk, and complete neighborhood/opportunity analyses
- Partnership with Dr. Lisa Bates
- Facilitate cross-bureau application





Investment Framework

- Facilitate a cross-bureau understanding of likely project impacts
- Foster cross-bureau conversation and coordination around cumulative investments
- Establish thresholds for A-D mitigation actions



RESULTS

(A condition of well-being for people)



Indicators (Measures of Results)

Programs

Performance Measures

Functions

Performance Measures

Policies

Performance Measures

Agencies

Performance Measures



Adapted from Racial Equity: Getting to Results (GARE, 2017)

Accountability Framework

- Identify citywide and community-specific population indicators (i.e., better off measures)
- Work with other bureaus to develop bureau-specific performance indicators that map to population indicators



THE BUREAU OF
**PLANNING &
SUSTAINABILITY**



Capacity-building, Public Workshops

- Community-led, Partnership and Power Sharing
- Spatial Justice Zoning Partnership
- Desired Outcomes



Questions