

190422

working for clean rivers

**E11080 S Portland – Burlingame Phase 2 Sewer Rehabilitation
Acquiring Permanent and Temporary Property Rights
Council Item 365**

Portland City Council | May 19th, 2021

**Joe Dvorak, P.E.,
Engineering Manager**

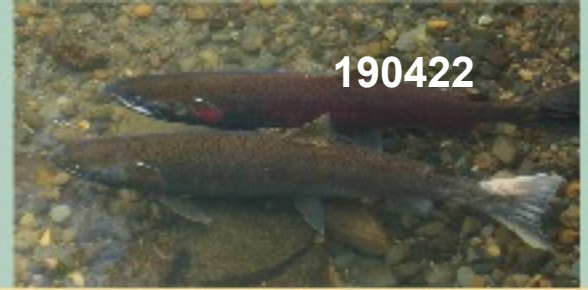
**Daniel Boatman, P.E.,
Project Manager**

**Ashley McLay
PBOT Right of Way Agent**



**ENVIRONMENTAL SERVICES
CITY OF PORTLAND**

MINGUS MAPPS, COMMISSIONER
MICHAEL JORDAN, DIRECTOR



Project Overview

PROJECT REQUIREMENTS

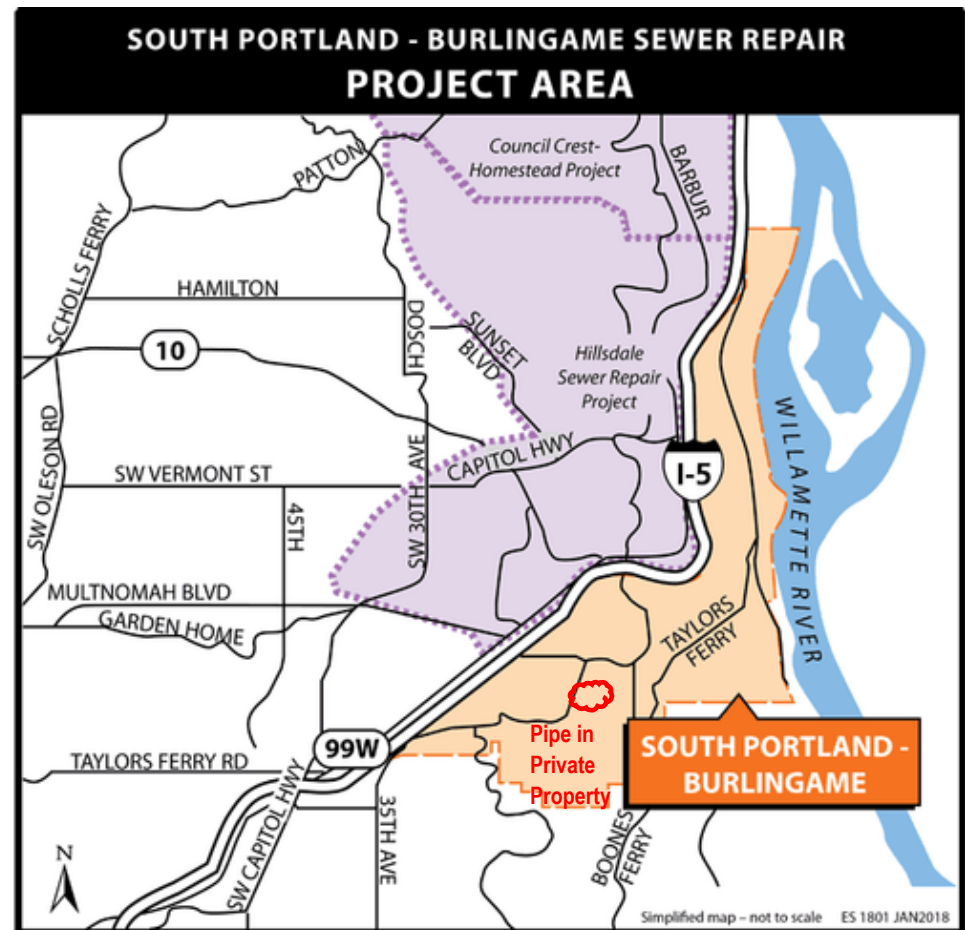
- Deteriorated sewer pipes 60 to over 120 years old at the end of their service life

PROJECT SCOPE

- Rehabilitation or Replacement of sewer pipes

PIPE IN PRIVATE PROPERTY

- Existing sewer in easement through 8625 SW 10th Ave



Construction in Private Property

Pipe Location:

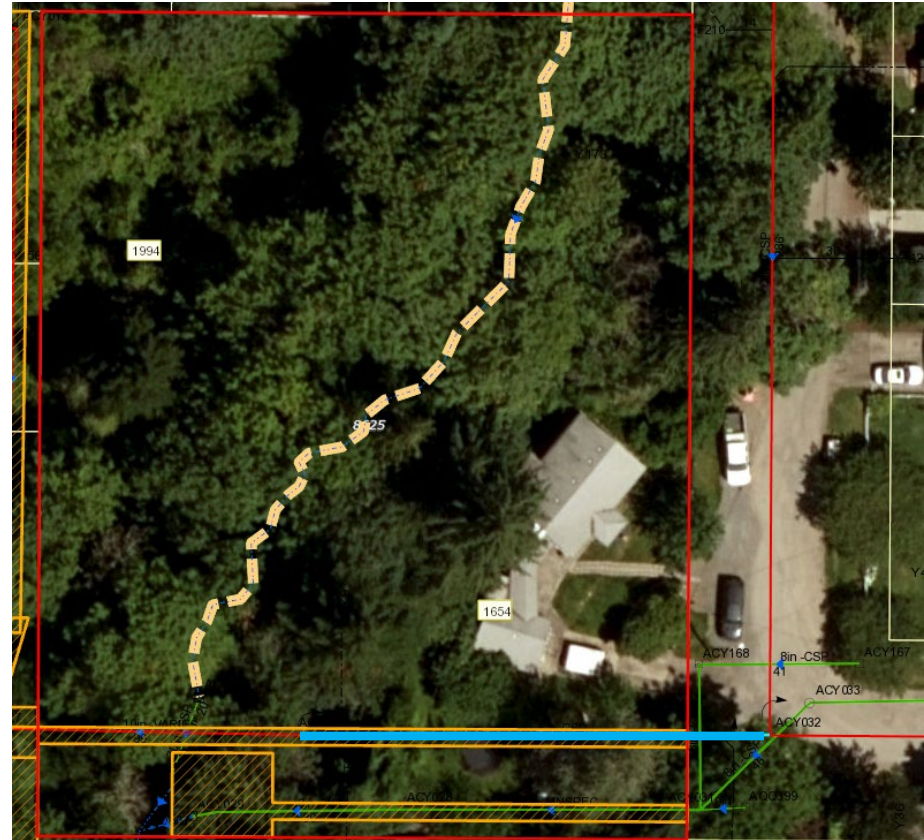
- In private property
(8625 SW 10th Ave)

Construction Method:

- Open Excavation Spot Repair

Public Outreach:

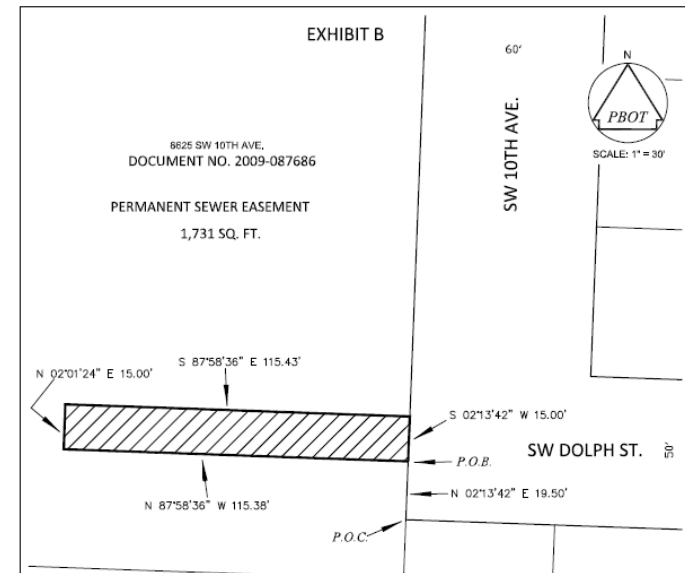
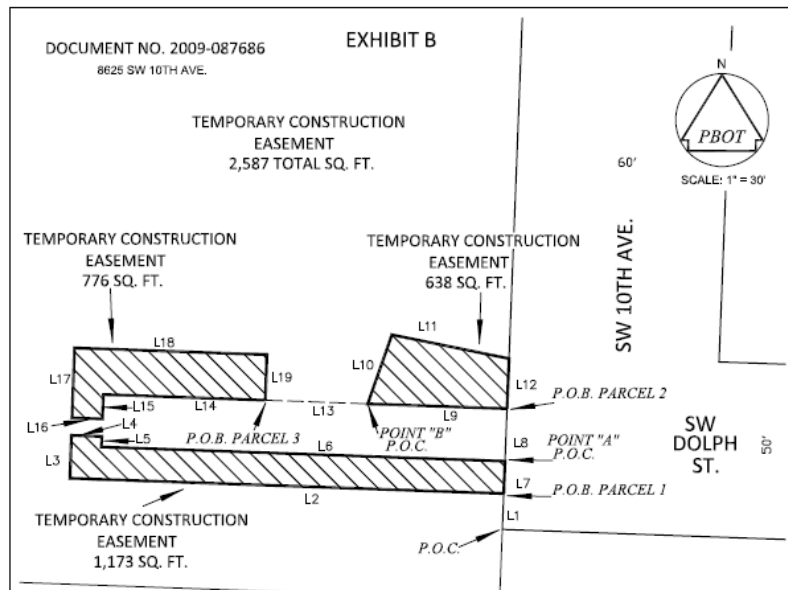
- Directly contacted property owners
- Continued outreach during construction.



Sewer Easements

Easements:

- Permanent sewer easement approx. 15 ft wide
- 3 supplemental temporary construction easements needed to perform repairs
- Costs to be determined by an independent appraisal



Schedule:

- Anticipated Construction NTP: March 2022
- Acquire possession of these property interests by March 1st, 2022



Questions



Q&A

City of Portland (OR) Archives, 3428
View west on SW Hume St, A2000-033, 1962.

