

# Vision Zero Update

Planning & Sustainability Commission

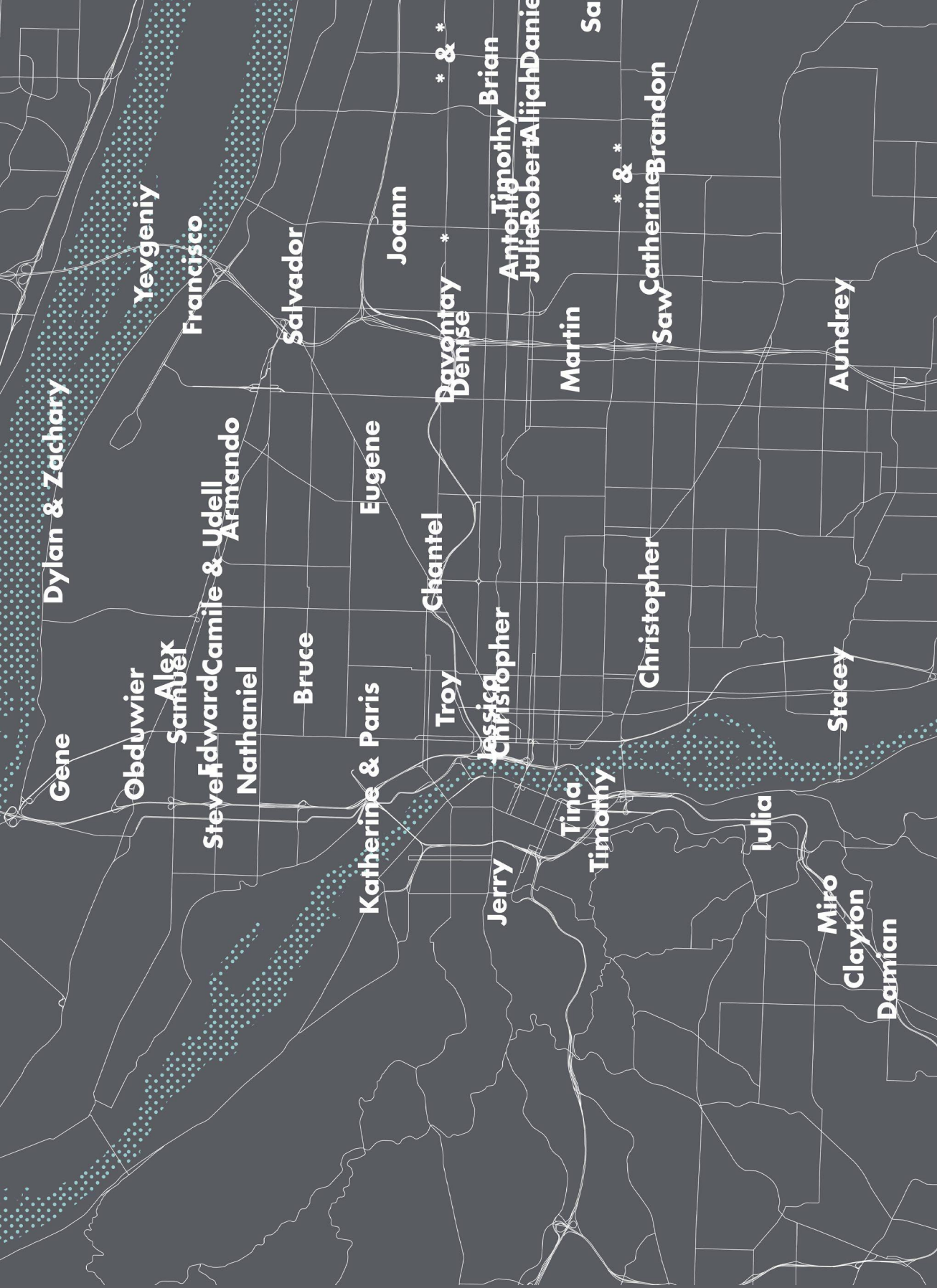
April 13, 2021



Enhanced street  
Division Street

**VISION ZERO**





\*Name not released to public

**VISION ZERO**



# Today

- Vehicle Miles Traveled & Vision Zero – COVID impact
- Racial disparities in traffic violence
- Rising motor vehicle deaths on state facilities
- Designing for safe speeds
- Dashboard
- Questions / Discussion



# Reducing driving remains critical

Vehicle Miles Traveled and  
Vehicles per Capita are the  
strongest predictors of  
traffic death rates in cities.

Ahangari H, Atkinson-Palombo C, Garrick NW. "Automobile-dependency as a barrier to Vision Zero, evidence from the states in the USA." *Accid Anal Prev*. 2017 Oct;107:77-85. doi: 10.1016/j.aap.2017.07.012. Epub 2017 Aug 12.

"We need to consider factors that foster a type of urban environment that we are fostering. We are creating environments that encourage multimodal transportation."

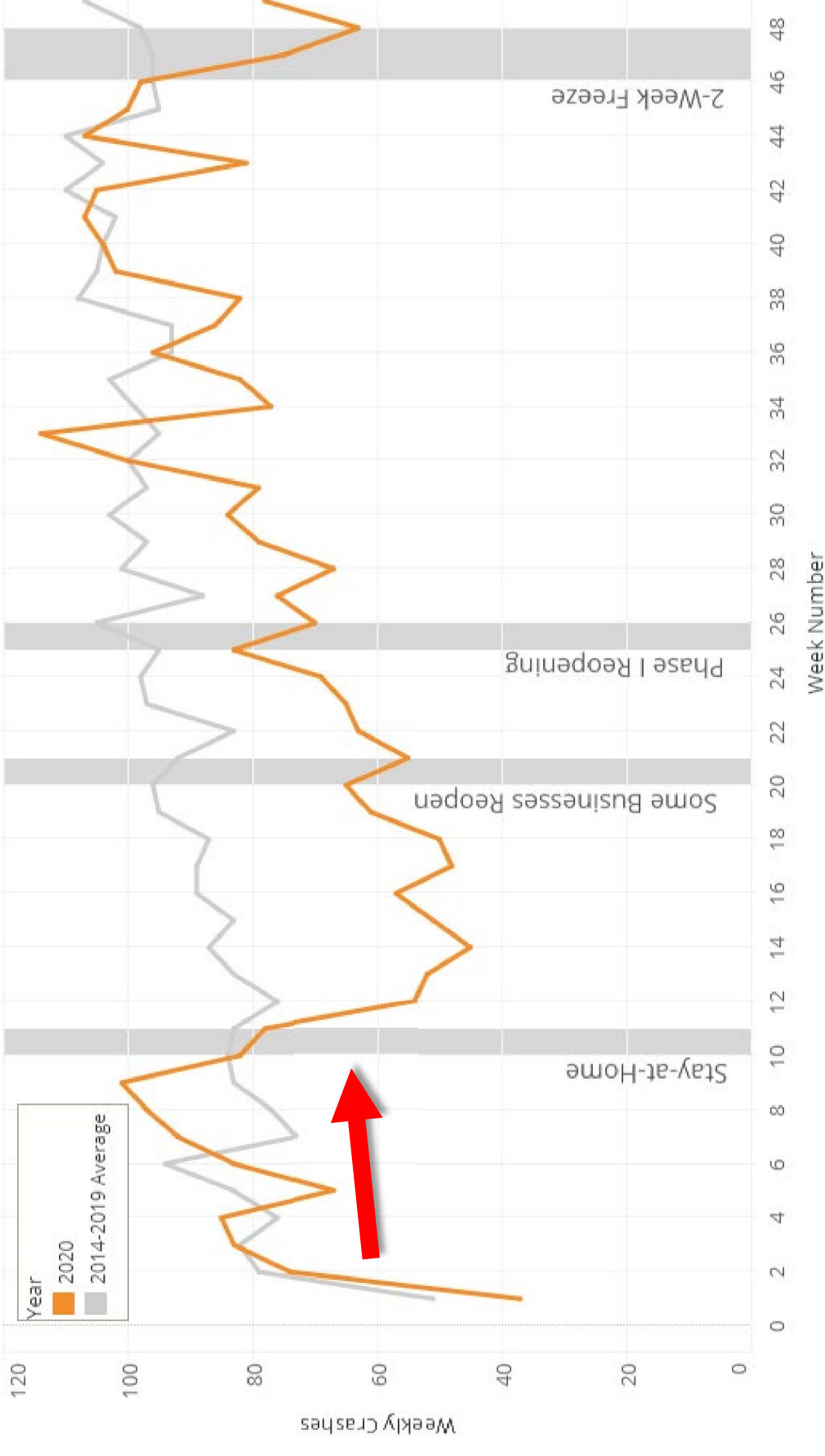
-- "Automobile-dependency as a barrier to Vision Zero in the states in the USA"

**VISION ZERO**



# Sharp drop in crashes during initial Covid-19 response

Weekly Portland Fire & Rescue Crash Responses: 2020 vs Average



# BIPOC Portlanders experience more traffic violence

- Black county residents are killed in crashes at 1.9x the rate of white residents (Multnomah County, 2013-17)
- In 2020, 35% of traffic deaths in Portland were BIPOC individuals (citywide BIPOC population is approximately 29%)

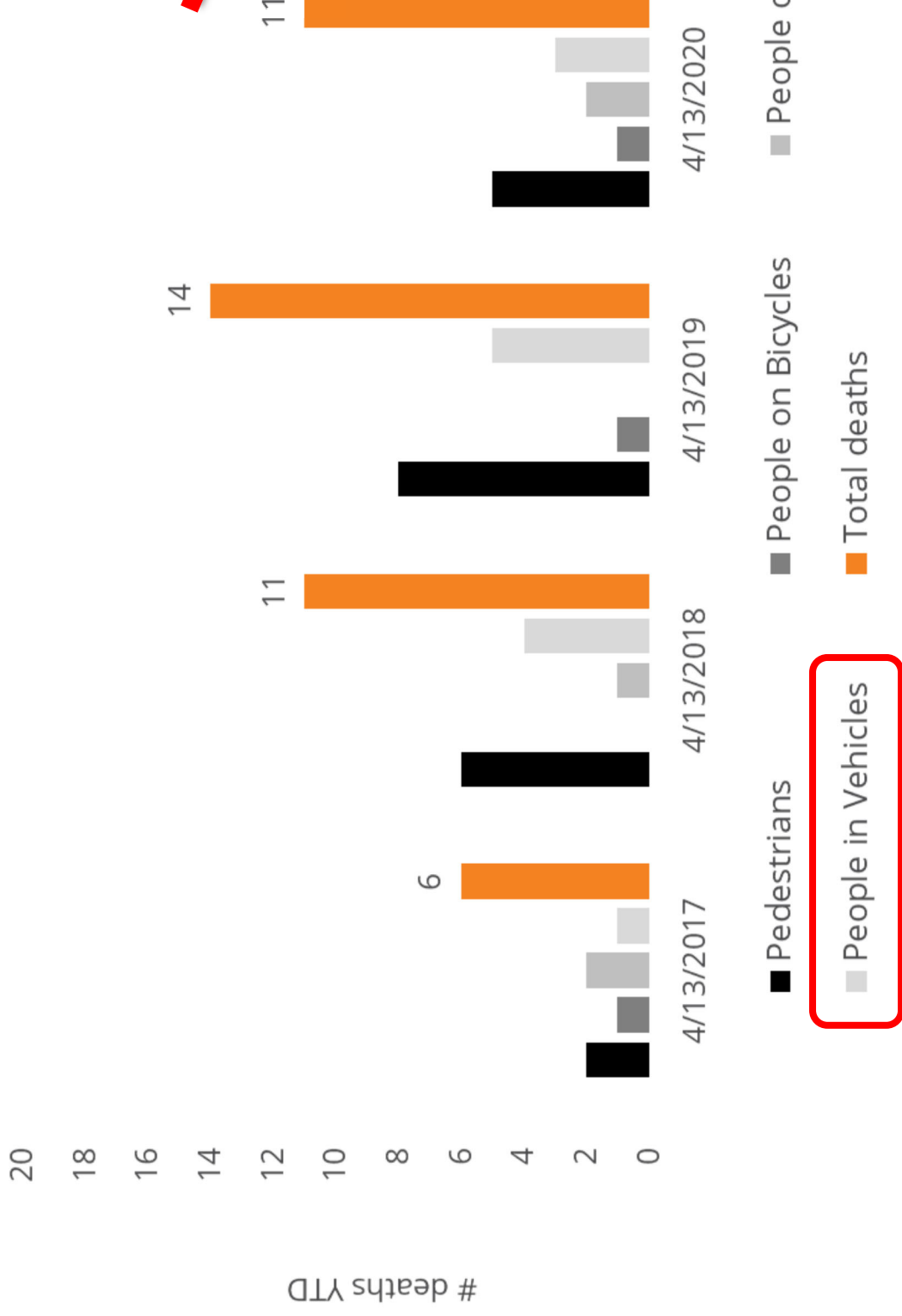
“Racism and White supremacy over the Black community experiences more through public in Multnomah County  
-- Multnomah County Transportation Crashes Report

VISION ZERO



# Year-to-date deaths by mode

Portland crash deaths year-to-date  
by travel mode, 2017-2021



VISION ZERO



# Year-to-date deaths by jurisdiction

Jurisdiction	4/13/2017*	4/13/2018	4/13/2019	4/13/2020	4/13/2021
Local	5	7	7	5	4
State	1	4	4	6	6
County	0	0	0	0	0
High Crash Network (%)	67%	64%	64%	55%	55%

\*2017 was the first year of Vision Zero Action Plan implementation

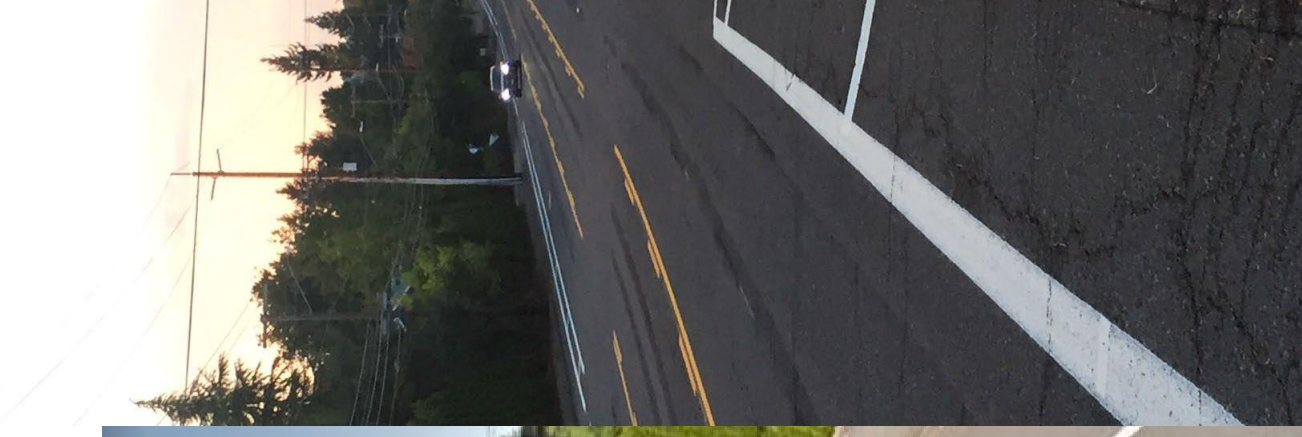
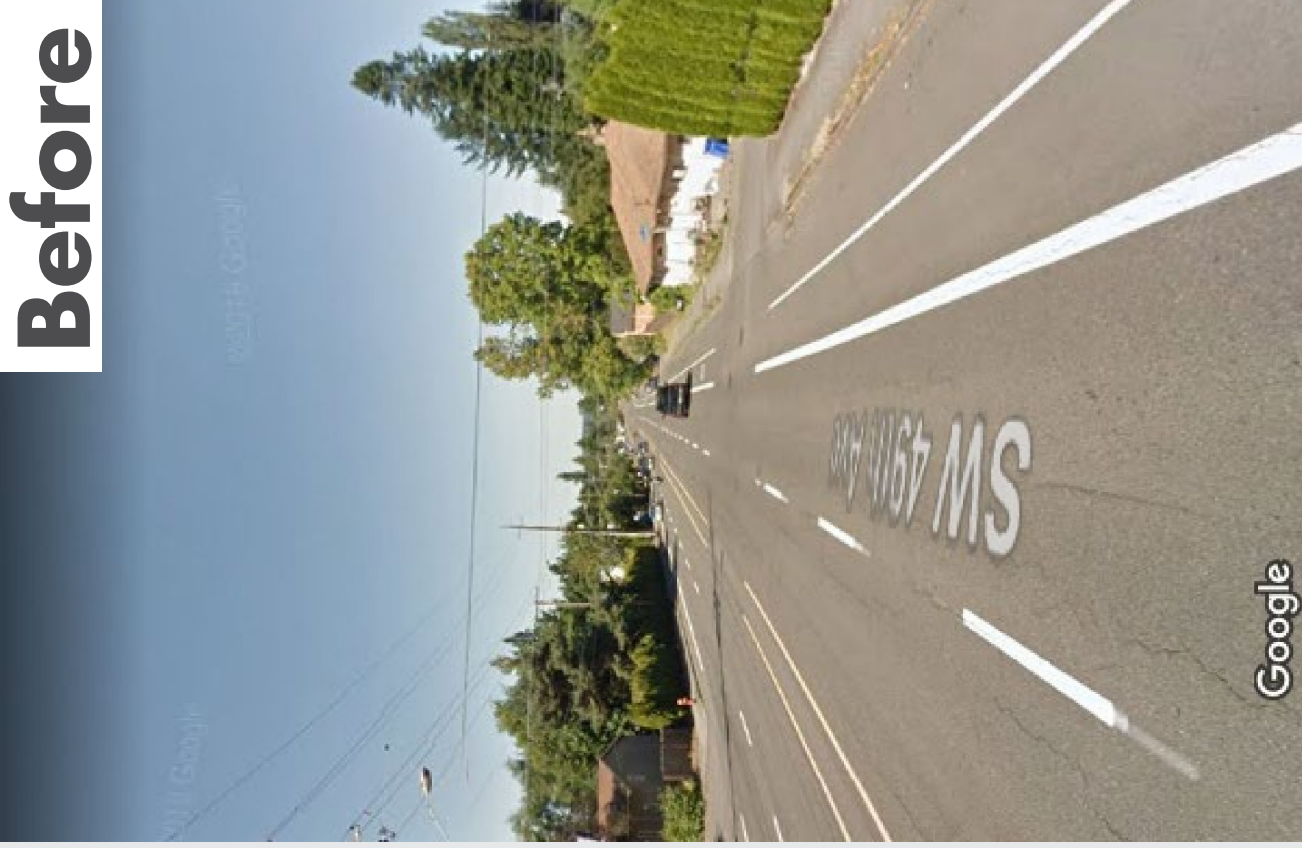




# Designing for safer speeds: SW Capitol Highway

- Fewer opportunities to speed
- Safer multimodal access to destinations

Before



VISION ZERO



# Designing for safer speeds: NE 102<sup>nd</sup> Avenue

- Fewer opportunities to speed
- Safer multimodal access to destinations



# Designing for safer speeds: NE Glisan Street



**VISION ZERO**



# Designing for safer speeds: NE Glisan Street

- Fewer opportunities to speed
- Safer multimodal access to destinations



**VISION ZERO**



# Results: Safer speeds on all 3 projects

Change in people driving 10 mph or more above speed limit

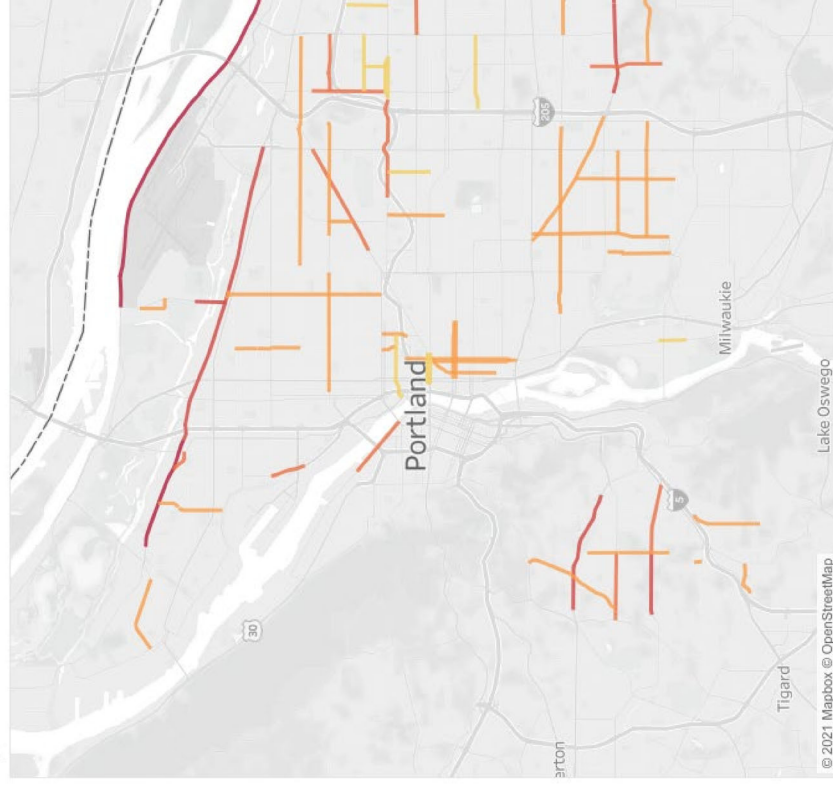


# New dashboard has latest data

- High Crash Network safety improvements
- Speed limit reductions
- Fixed Speed Safety Cameras
- Education & Outreach
- Latest crashes
- *Updated quarterly*

[www.visionzeroportland.com](http://www.visionzeroportland.com)

Speed Limit Reductions



Map of street segments where the posted speed has been reduced in 2019 and 2020. Color shows the reduction, on a color scale from yellow to orange to red. Hover your mouse over the street segment to see the old posted speed, the new posted speed, and the date of the speed reduction, including street name, date posted speed was changed, old posted speed, and segment in miles.

**VISION ZERO**



# Questions & discussion

Dana Dickman

Safety Section Manager, PBOT

[dana.dickman@portlandoregon.gov](mailto:dana.dickman@portlandoregon.gov)

