



Climate Action in Portland 1993-2021

Planning and Sustainability Commission Retreat
March 4, 2021

Andria Jacob, BPS Climate Policy and Programs

Presentation Overview



- Brief history of climate planning (1993 – 2015)
- Review of emissions inventory
- Current state of climate action (2015 – 2021)
 - 100% Renewable Energy Resolution
 - Climate Emergency Declaration
 - Climate Justice Initiative
 - Decarbonization pathways
- Outcomes and 3-year strategies

Legacy of Leadership

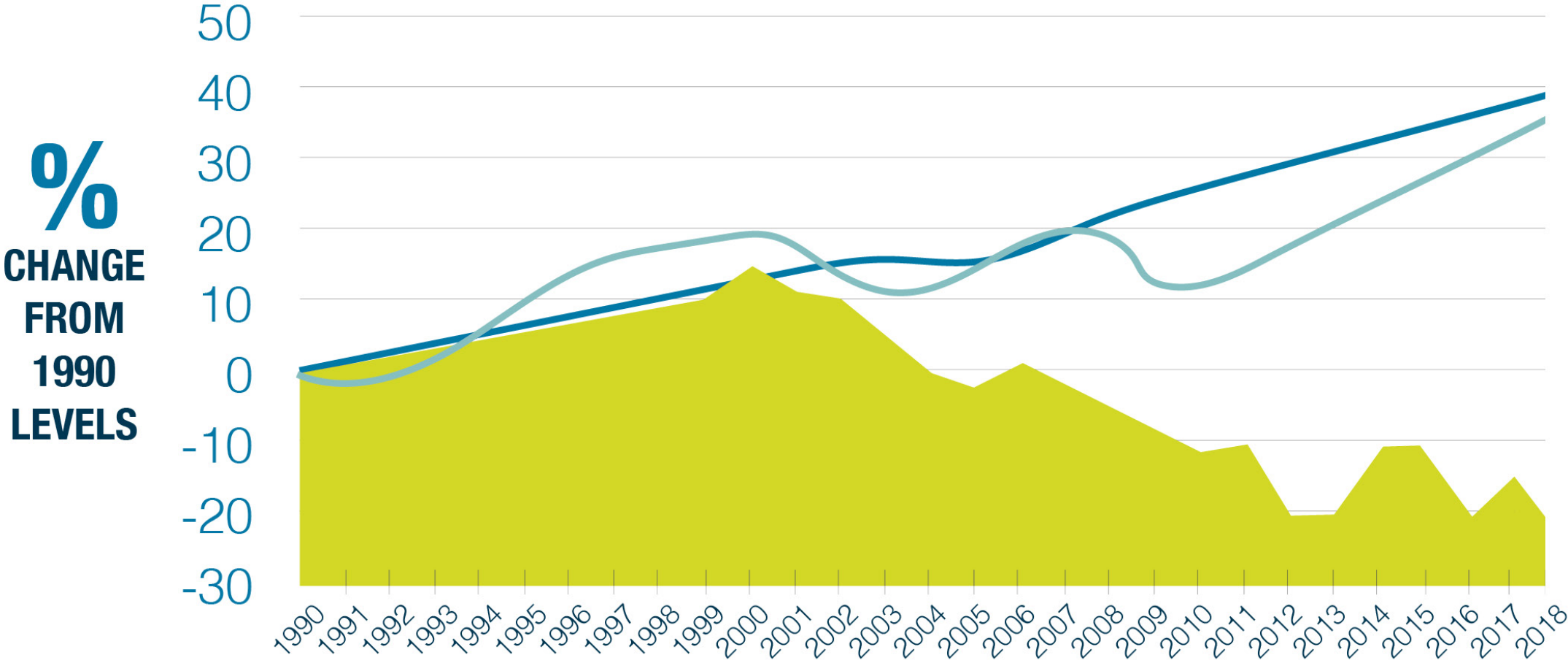
A photograph of the St. Johns Bridge in Portland, Oregon, with a large, bold, dark blue text overlay that reads 'CLIMATE ACTION PLAN'. The bridge's white cables and towers are prominent against a background of trees with autumn foliage.

Photo: Connecting Communities, Trust

JUNE 2015 LOCAL STRATEGIES TO ADDRESS CLIMATE CHANGE



POPULATION AND JOBS UP / EMISSIONS DOWN



POPULATION GROWTH



JOB GROWTH

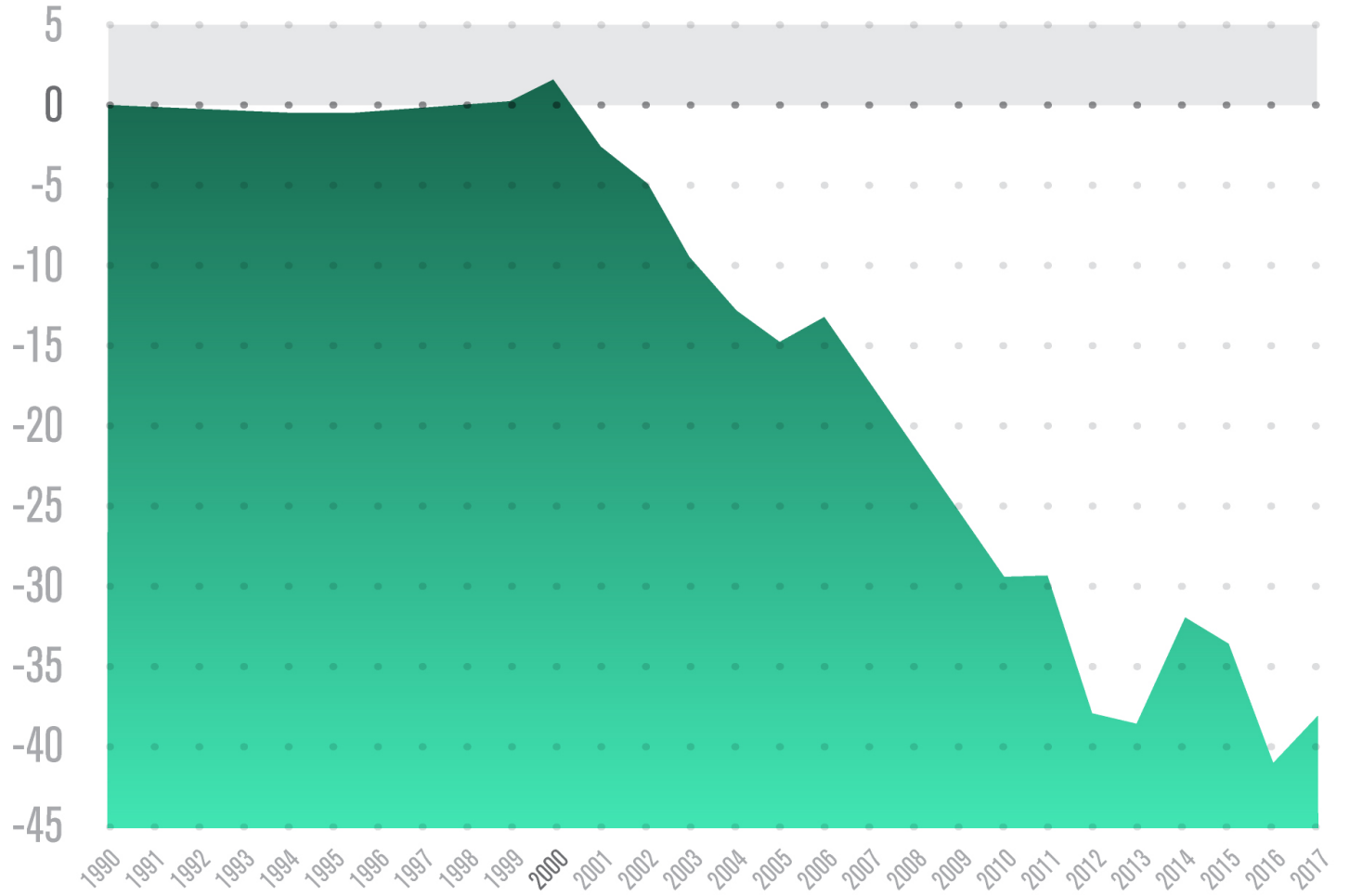


EMISSIONS

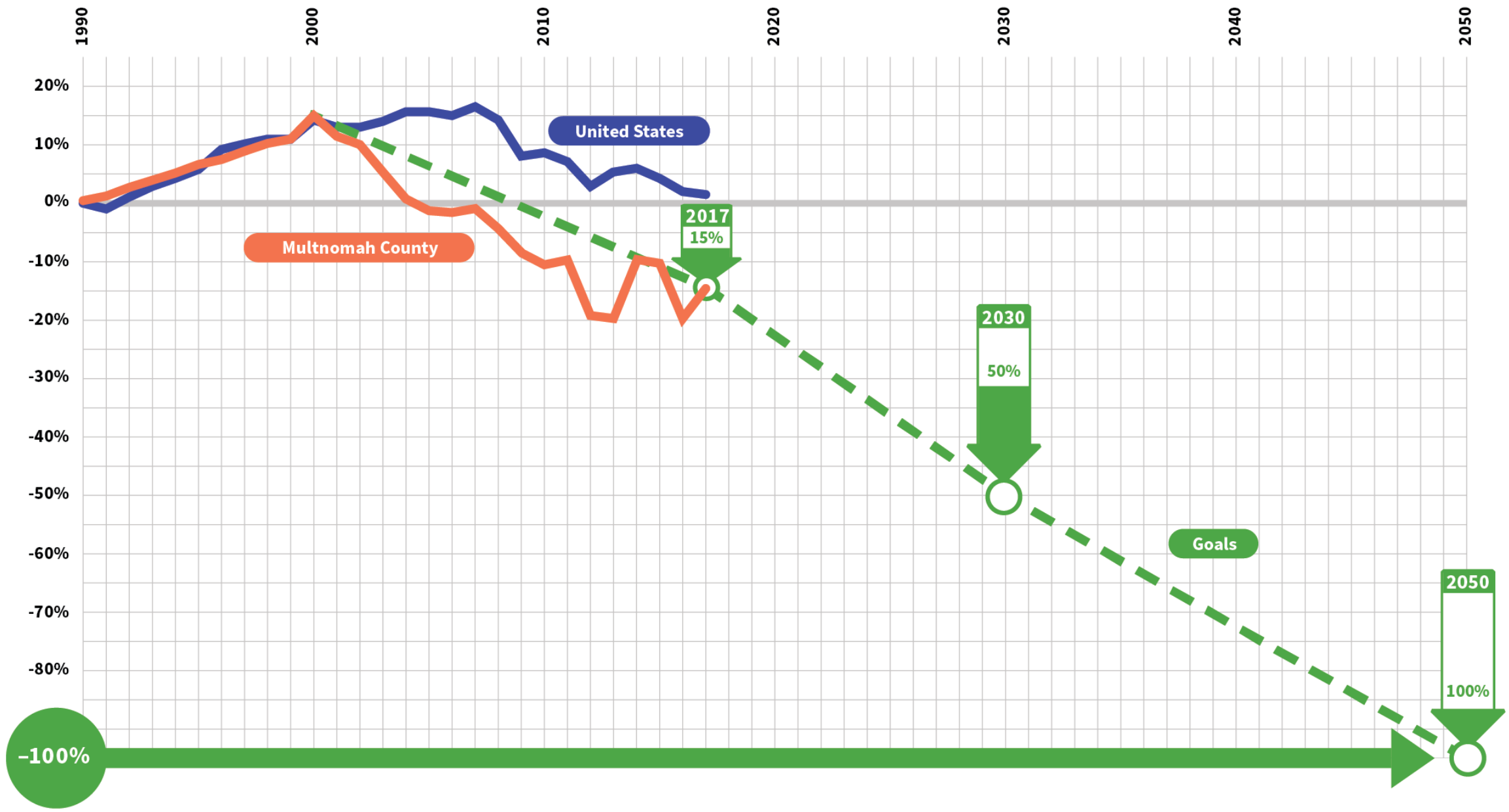
Emissions per person are 42% below 1990 levels

0%
CHANGE FROM 1990 LEVELS

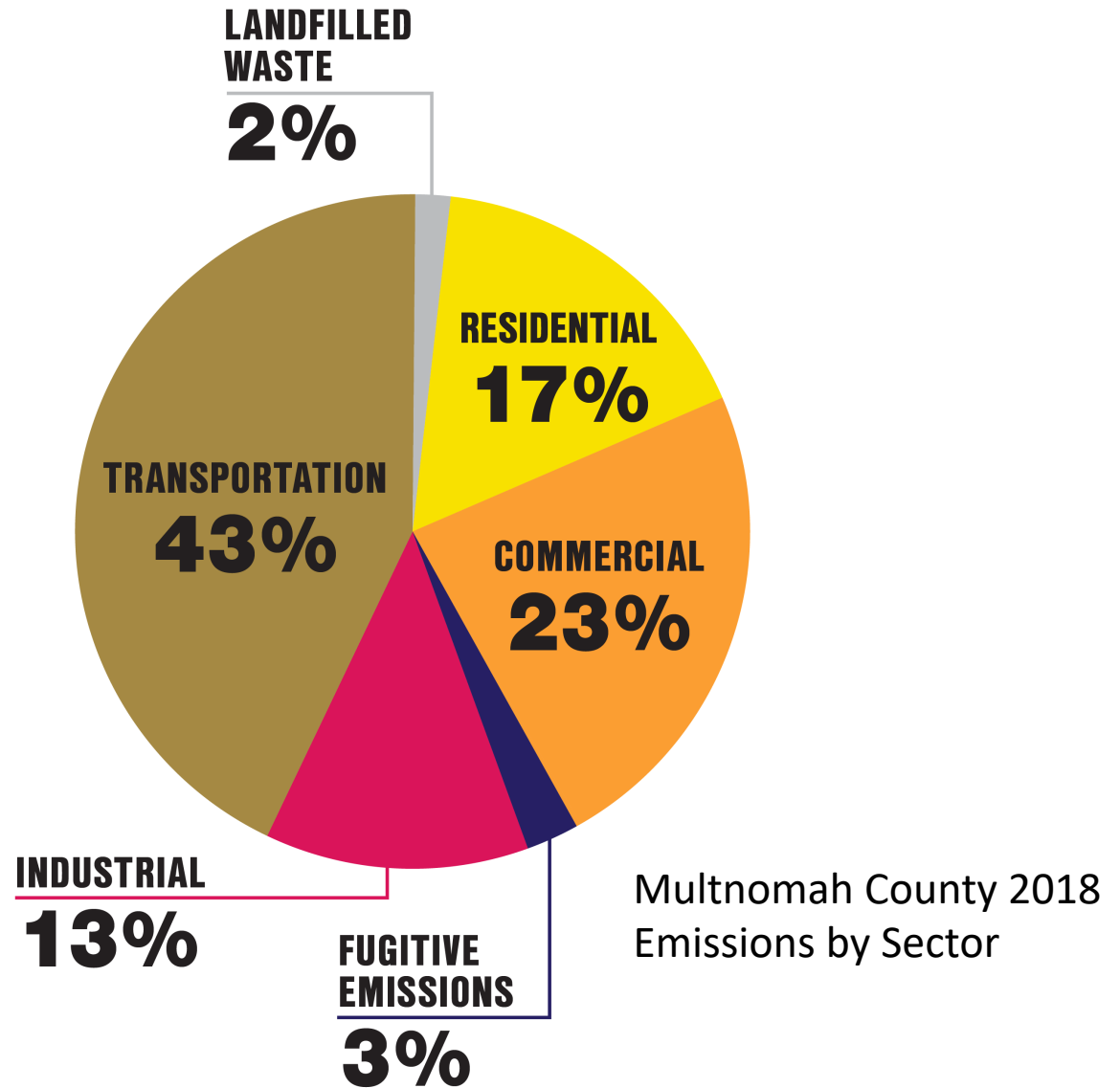
CHANGES IN MULTNOMAH COUNTY CARBON EMISSIONS PER PERSON



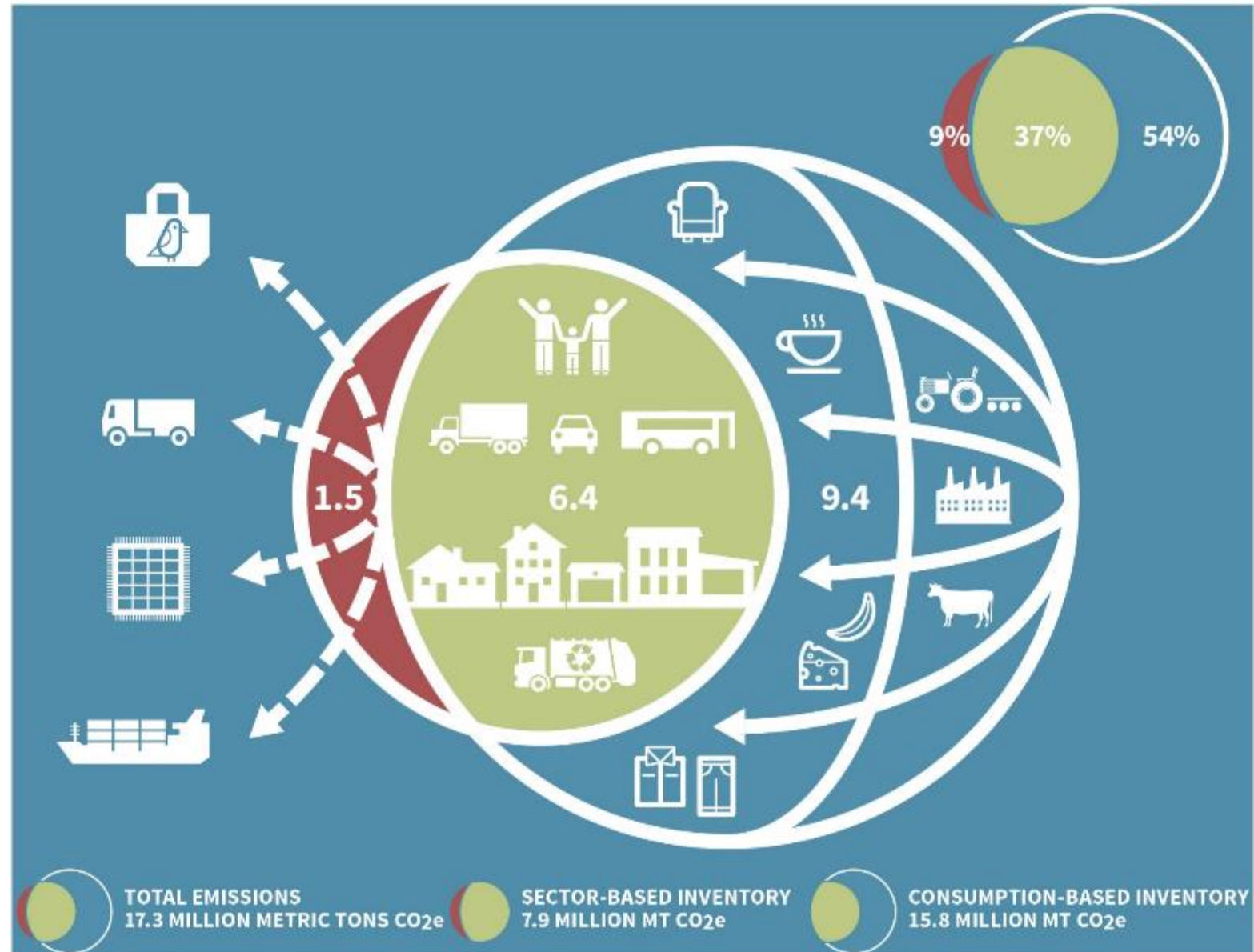
Percent change from 1990 level



Where do
Portland's carbon
emissions come
from?



Global emissions as a result of local consumer demand are more than twice the volume of emissions produced locally.





WE RESIST

MATE TICE

OUR RIVER
OUR FUTURE

WATER
WE RISE

DESTROY
PLANET EARTH

You're the Puppet!!!

ANCE
OT
ANCE

Community Alliance of Tenants
Inquilinos Comunitaria de Inquilinos

NO GUER

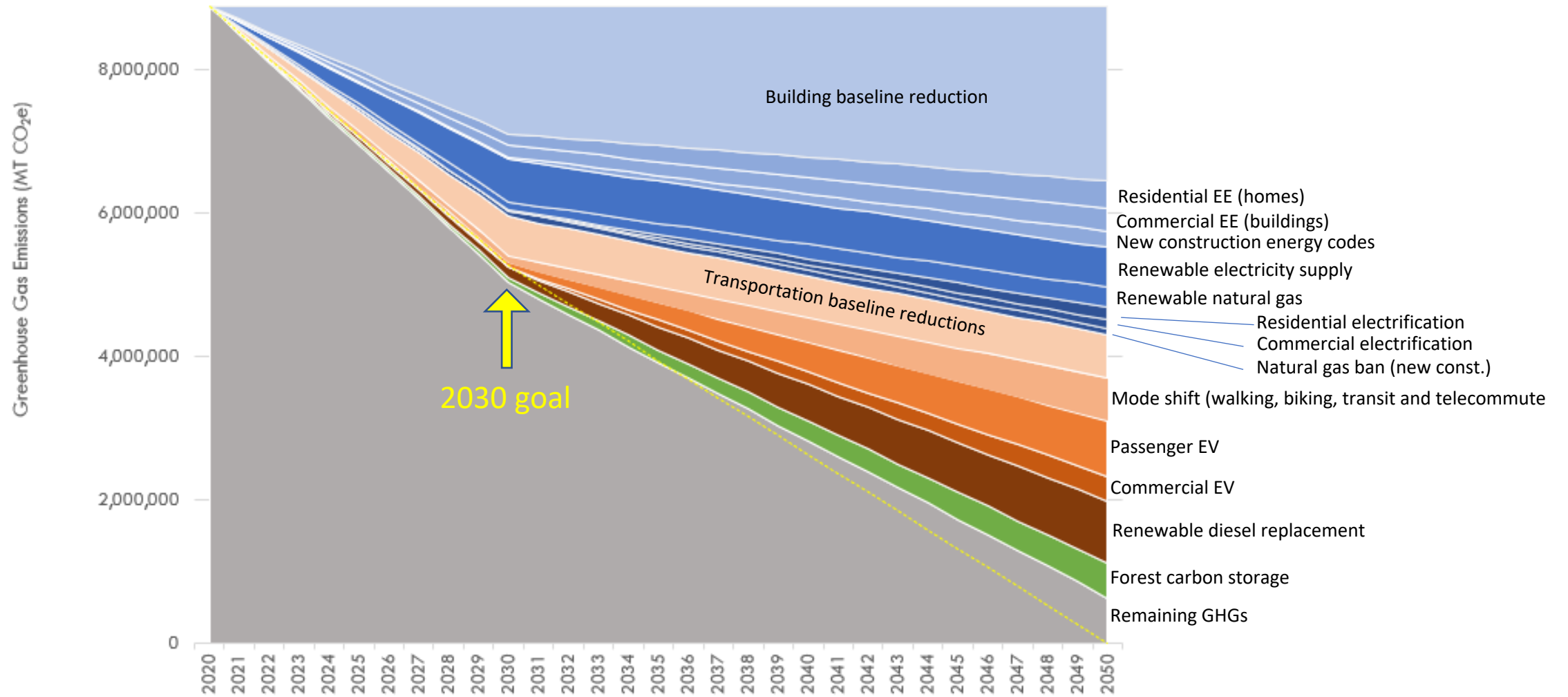
RIE

MON

#B

MON

Portland Pathways to Net Zero Carbon by 2050



Source: Good Company, Portland BPS



- **Regulate carbon in existing buildings (building performance standards.)**

- **Advocate for utilities to make clean energy.**



- **Innovate in City operations.**

- **Create market for EV charging infrastructure.**





Make bold investments toward carbon neutral City-owned buildings, fleets and operations. Investment in Parks is #1 near-term opportunity.



Advancing transportation justice and reducing racial disparities in our mobility system while cutting carbon emissions and overall drive alone trips.

Protect, restore and manage our urban natural resources to sequester carbon and build resilience to the impacts of climate change.



Build community resilience to the impacts of climate change like flooding, landslides, heatwaves and wildfire smoke.





Marriott