

COMMUNITY IS KEY



# PCEF Grant Committee Meeting

March 3, 2021, 6 – 9 p.m.

PORTLAND  
CLEAN ENERGY  
COMMUNITY BENEFITS  
FUND



Bureau of Planning and Sustainability

VISIT US ONLINE  
[portland.gov/bps/cleanenergy](https://portland.gov/bps/cleanenergy)

# Virtual Participation Check

## Guidelines for public participation

- Committee meetings open to the public
- Public invited to comment at around 6:15 p.m.
- Public asked to observe and listen
- Opportunities for public engagement in other forums

### ➔ Guidelines applied to virtual meeting:



**Chatbox:** open for introductions and public comment. All other times, host-only chats (PCEF Staff).



**Raise Hand:** used by Committee only.



**Video:** on for Committee only.



**Microphone:** public members muted unless giving public comment or for introductions.



**Recording:** this meeting is being recorded.



**Captioning:** this meeting is being captioned; settings > show subtitles.

# Introductions & opening inspiration

# Agenda

- 6:00 Open
- 6:05 Opening inspiration exercise
- 6:15 Public comment
- 6:40 Summary of 2/24/21 meeting
- 6:45 Presentation of applicant characteristic information requested at 2/24/21 Committee meeting
- 7:00 Break
- 7:10 Grant funding recommendations – deliberation and decision
- 8:40 Committee member reflections
- 9:00 Meeting adjourned

# Public comment

# Grant funding recommendations

# Guiding Principles



**Focused on climate action with multiple benefits.**

Invest in people, livelihoods, places, and processes that build climate resilience and community wealth, foster healthy communities, and support regenerative systems. Avoid and mitigate displacement, especially resulting from gentrification pressures.



## Community-powered

Trust community knowledge, experience, innovation, and leadership. Honor and build on existing work and partnerships, while supporting capacity building for emerging community groups and diverse coalitions. Engage with and invest in community-driven approaches that foster community power to create meaningful change.



## Justice Driven

Advance systems change that addresses historic and current discrimination. Center all disadvantaged and marginalized groups – particularly Black and Indigenous people



## Accountable

Implement transparent funding, oversight, and engagement processes that promote continuous learning, programmatic checks and balances, and improvement. Demonstrate achievement of equitable social, economic, and environmental benefit. Remain accountable to target beneficiaries, grantees, and all Portlanders.

# Modified consensus decision making process

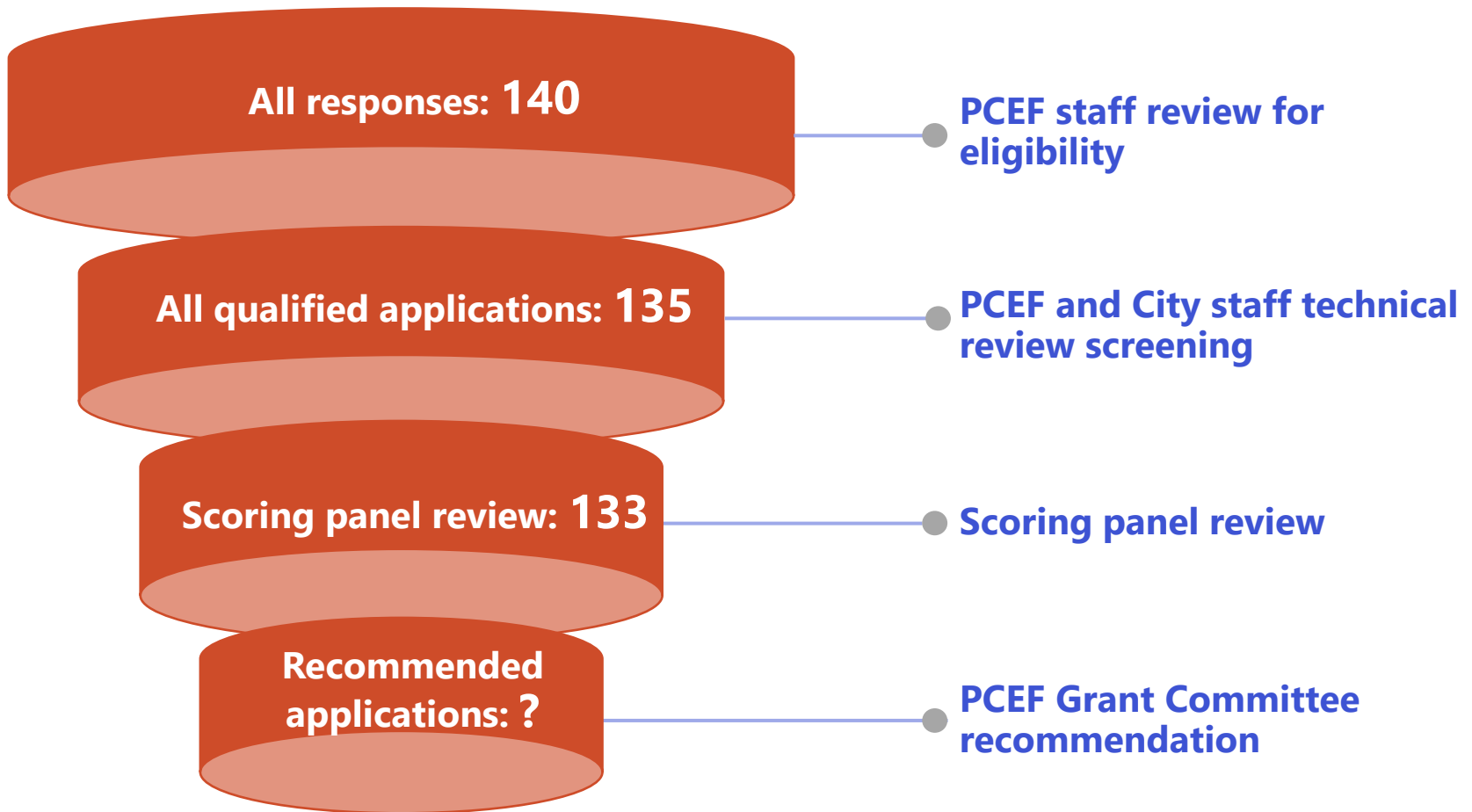
- **Proposal** – put forth for consideration by Committee member
- **Temperature check** – each Committee member indicates how comfortable they are with making an affirmative decision
- **Discussion** – additional discussion if needed
- **Amendments** – Committee members can offer amendments to the original proposal
- **Decision** – each Committee member can 1) affirm the proposal, 2) stand aside, or 3) indicate that “no” they do not support the proposal. Note that standing aside is counted as a decision to affirm for the purposes of approving a proposal.

The following minimum number of affirmative decisions is required for a decision to represent the position of the PCEF Committee.

- When 6 or 7 Committee members are present : 5 Affirmative decisions
- When 8 or 9 Committee members are present : 6 Affirmative decisions



# Overview of applications received



City Council approves grants

# Portfolio Option A : \$1.5M for Planning, Midpoint for Most Categories

## Key Portfolio Characteristics:

Total Number of Grants: **36**

Unique applicants: **30**

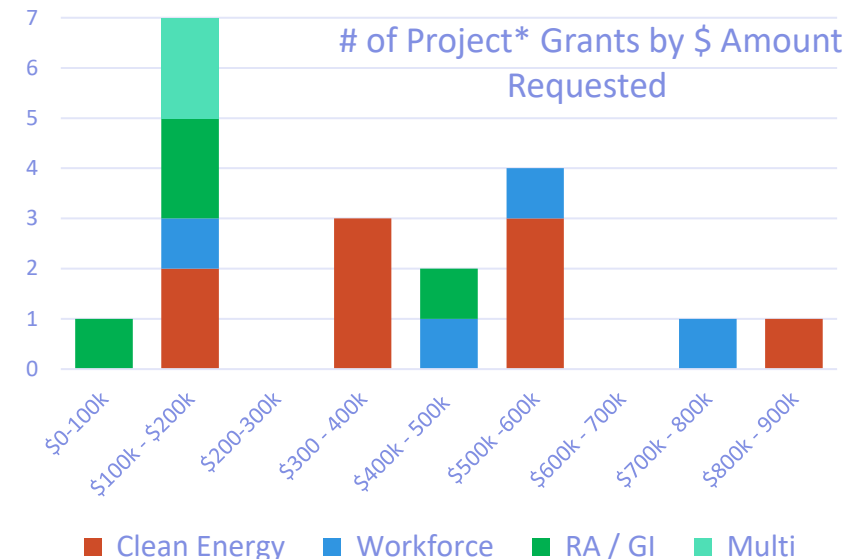
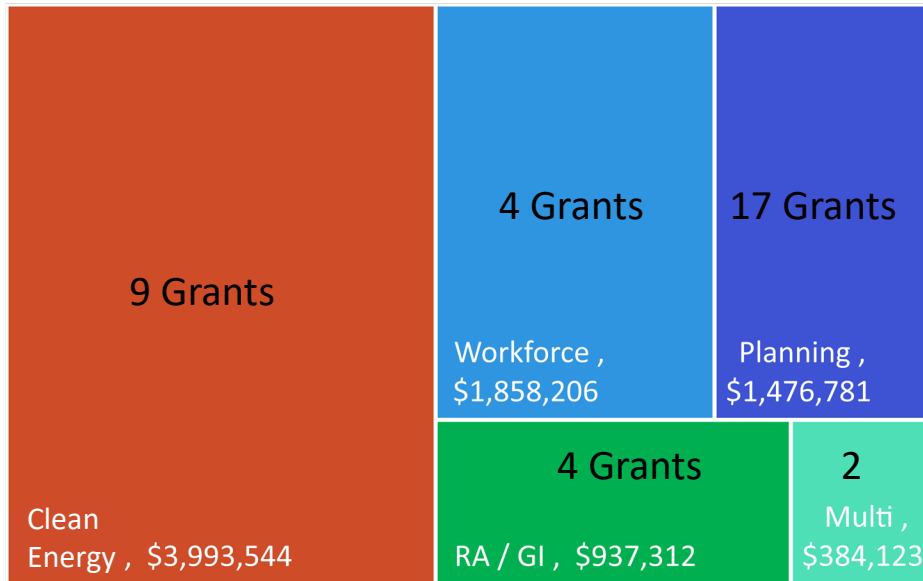
Total lifetime GHG impact: 13,307 tons

Projects\* w/ PI serving E of 82<sup>nd</sup> : 9

\* All grants that are not Planning grants

Portfolio Scoring Indicators:	# of Projects	% of Total Funding
Applicant Reflects Priority Population	31 of 36 14 of 19*	78%
Small Orgs (< 6 employees)	14 of 36 7 of 19*	37%
Projects* with Physical Improvements (PI)	15 of 19*	61%

Funding Allocation by Category



# Portfolio Option B : \$2.5M for Planning

## Key Portfolio Characteristics:

Total Number of Grants : 45

Unique applicants: 38

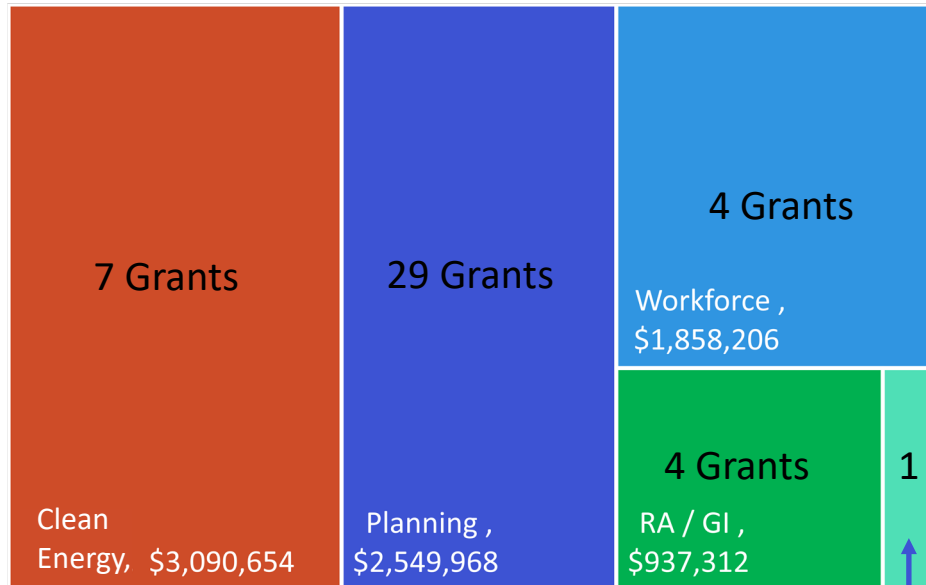
Total lifetime GHG impact: 11,469 tons

Projects\* w/ PI serving E of 82<sup>nd</sup> : 8

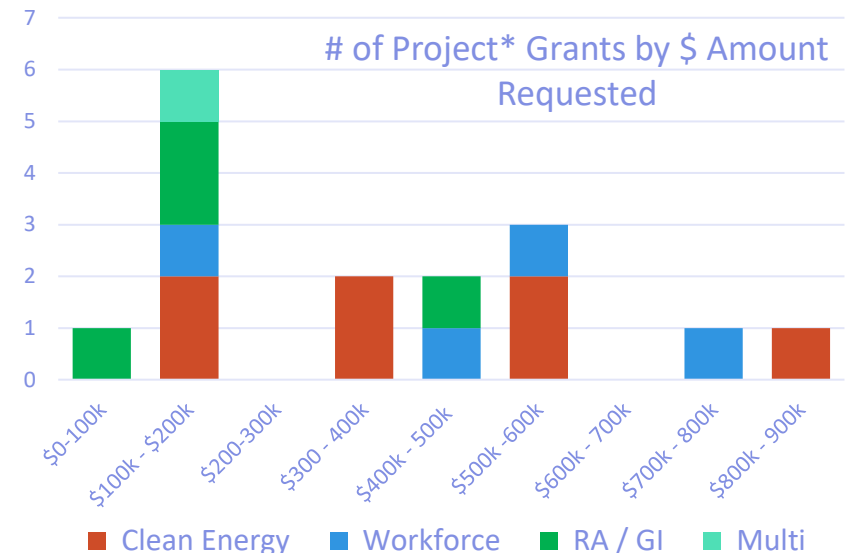
\* All grants that are not Planning grants

Portfolio Scoring Indicators:	# of Projects	% of Total Funding
Applicant Reflects Priority Population	38 of 45 12 of 16*	86%
Small Orgs (< 6 employees)	18 of 45 5 of 16*	38%
Projects* with Physical Improvements (PI)	12 of 16*	49%

Funding Allocation by Category



Multi,  
\$199,260



# Portfolio Option C : \$2M for Planning

## Key Portfolio Characteristics:

Total Number of Grants : **39**

Unique applicants: **33**

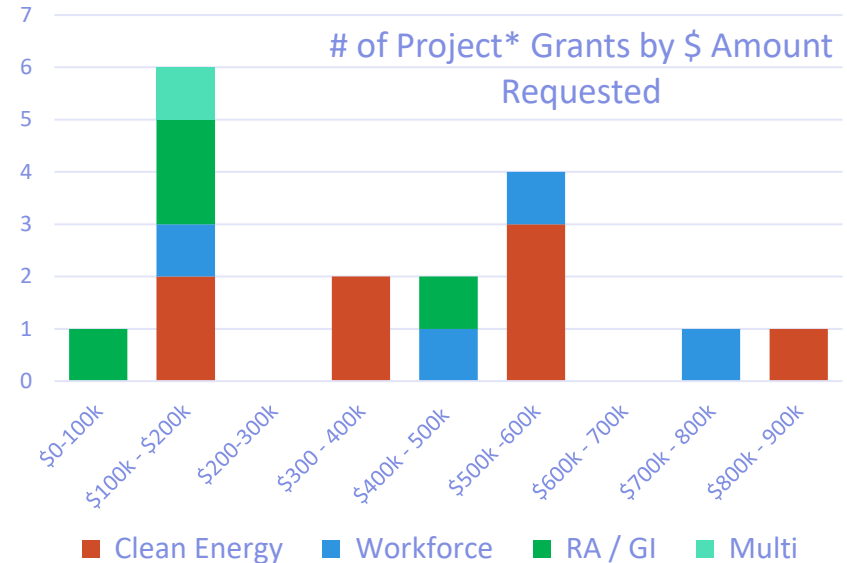
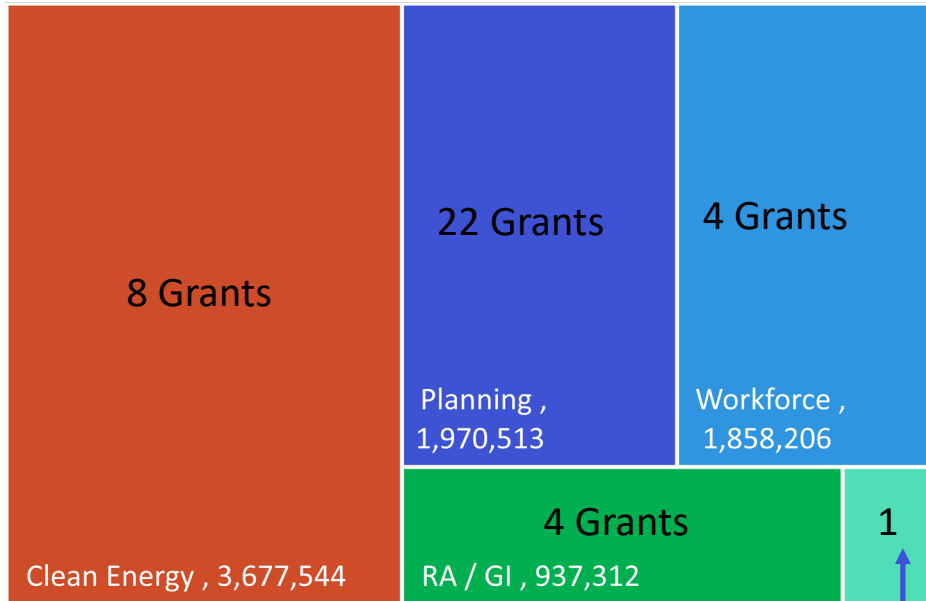
Total lifetime GHG impact: 13,067 tons

Projects\* w/ PI serving E of 82<sup>nd</sup> : 8

\* All grants that are not Planning grants

Portfolio Scoring Indicators:	# of Projects	% of Total Funding
Applicant Reflects Priority Population	35 of 39 13 of 17*	82%
Small Orgs (< 6 employees)	14 of 39 5 of 17*	34%
Projects* with Physical Improvements (PI)	13 of 17*	56%

Funding Allocation by Category

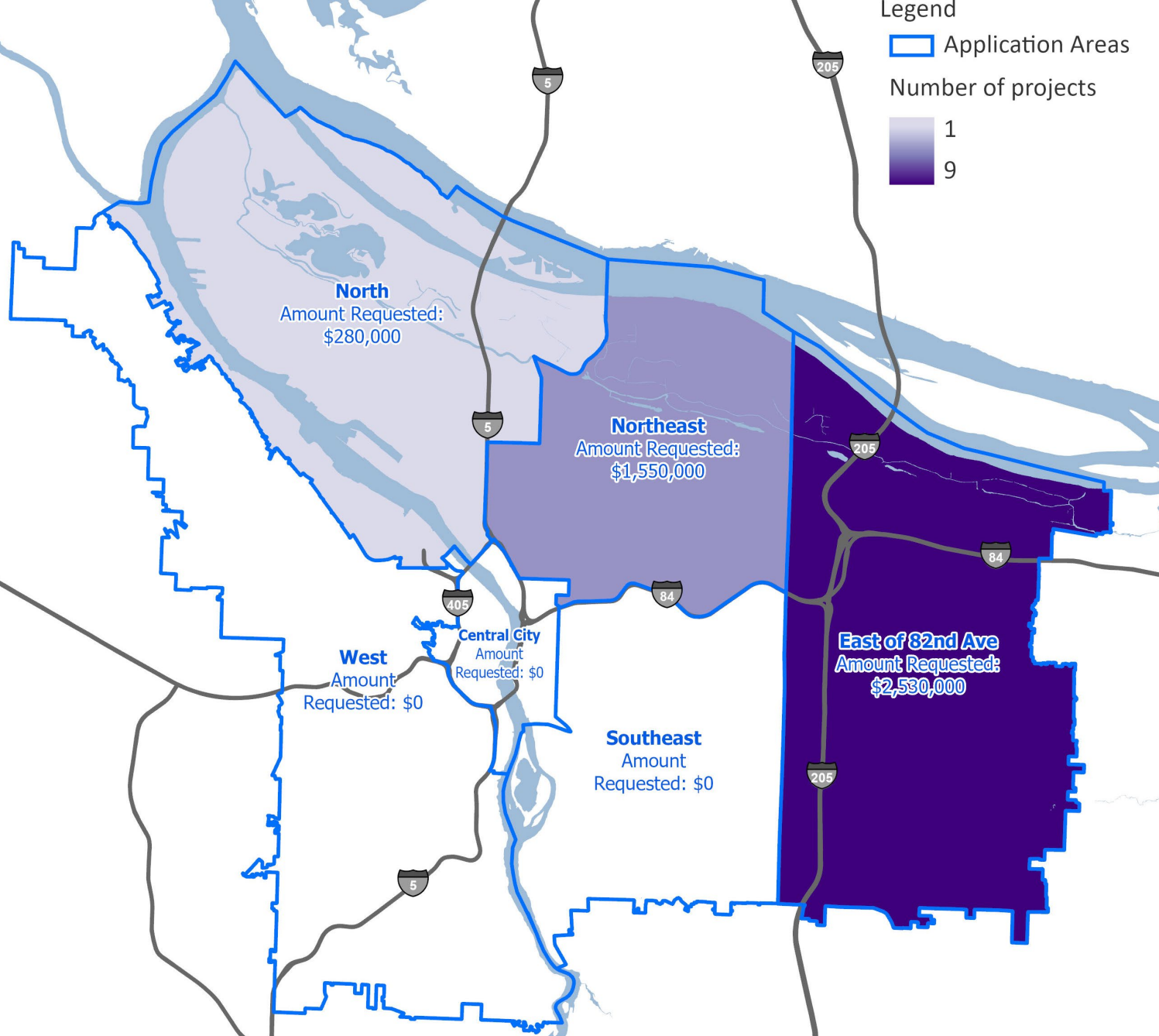
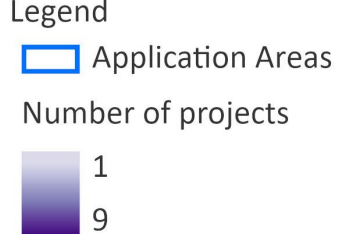


# Additional portfolio descriptions

	Portfolio A reference portfolio	Portfolio B	Portfolio C
Planning grants	<p>17 grants</p> <ul style="list-style-type: none"> <li>• 2 clean energy</li> <li>• 2 workforce development</li> <li>• 3 contractor support</li> <li>• 3 RA/GI</li> <li>• 7 other/innovation or multiple project types</li> <li>• 17 of 17 get perfect score for reflecting community served</li> </ul>	<p>29 grants: portfolio A plus 12</p> <ul style="list-style-type: none"> <li>• 3 workforce development</li> <li>• 1 contractor support</li> <li>• 2 RA/GI</li> <li>• 3 other/innovation</li> <li>• 3 with multiple project types</li> <li>• 9 of 12 get perfect score for reflecting community served</li> </ul>	<p>22 grants: portfolio A plus 5</p> <ul style="list-style-type: none"> <li>• 3 workforce development</li> <li>• 1 contractor support</li> <li>• 1 other/innovation</li> <li>• 5 of 5 get perfect score for reflecting community served</li> </ul>
Implem. Grants	<p>19 grants</p> <ul style="list-style-type: none"> <li>• 9 clean energy</li> <li>• 4 workforce development</li> <li>• 3 regenerative agriculture</li> <li>• 1 green infrastructure</li> <li>• 1 multi with clean energy and workforce</li> <li>• 1 multi with clean energy and green infrastructure</li> <li>• 14 of 19 get perfect score for reflecting community served</li> </ul>	<p>16 grants: portfolio A minus 3</p> <ul style="list-style-type: none"> <li>• 1 multi-family project in NE</li> <li>• 1 single family residential clean energy project east of 82<sup>nd</sup></li> <li>• 1 commercial energy efficiency and green infrastructure multi project in North Pdx</li> <li>• 12 of 16 get perfect score for reflecting community served</li> </ul>	<p>17 grants: portfolio A minus 2</p> <ul style="list-style-type: none"> <li>• 1 single family residential clean energy project east of 82<sup>nd</sup></li> <li>• 1 commercial energy efficiency and green infrastructure multi project in North Pdx</li> <li>• 13 of 17 get perfect score for reflecting community served</li> </ul>

# Portfolio A

Project proposals  
which include  
physical  
improvements



The information on this map was derived from City of Portland GIS databases. Care was taken in the creation of this map but it is provided "as is". The City of Portland cannot accept any responsibility for error, omissions or positional accuracy.

The City of Portland ensures meaningful access to city programs, services, and activities to comply with Civil Rights Title VI and ADA Title II laws and reasonably provides: translation, interpretation, modifications, accommodations, alternative formats, auxiliary aids and services. To request these services, contact 503-823-7700, City TTY 503-823-6868, Relay Service: 711.



Bureau of Planning and Sustainability  
Innovation. Collaboration. Practical Solutions.

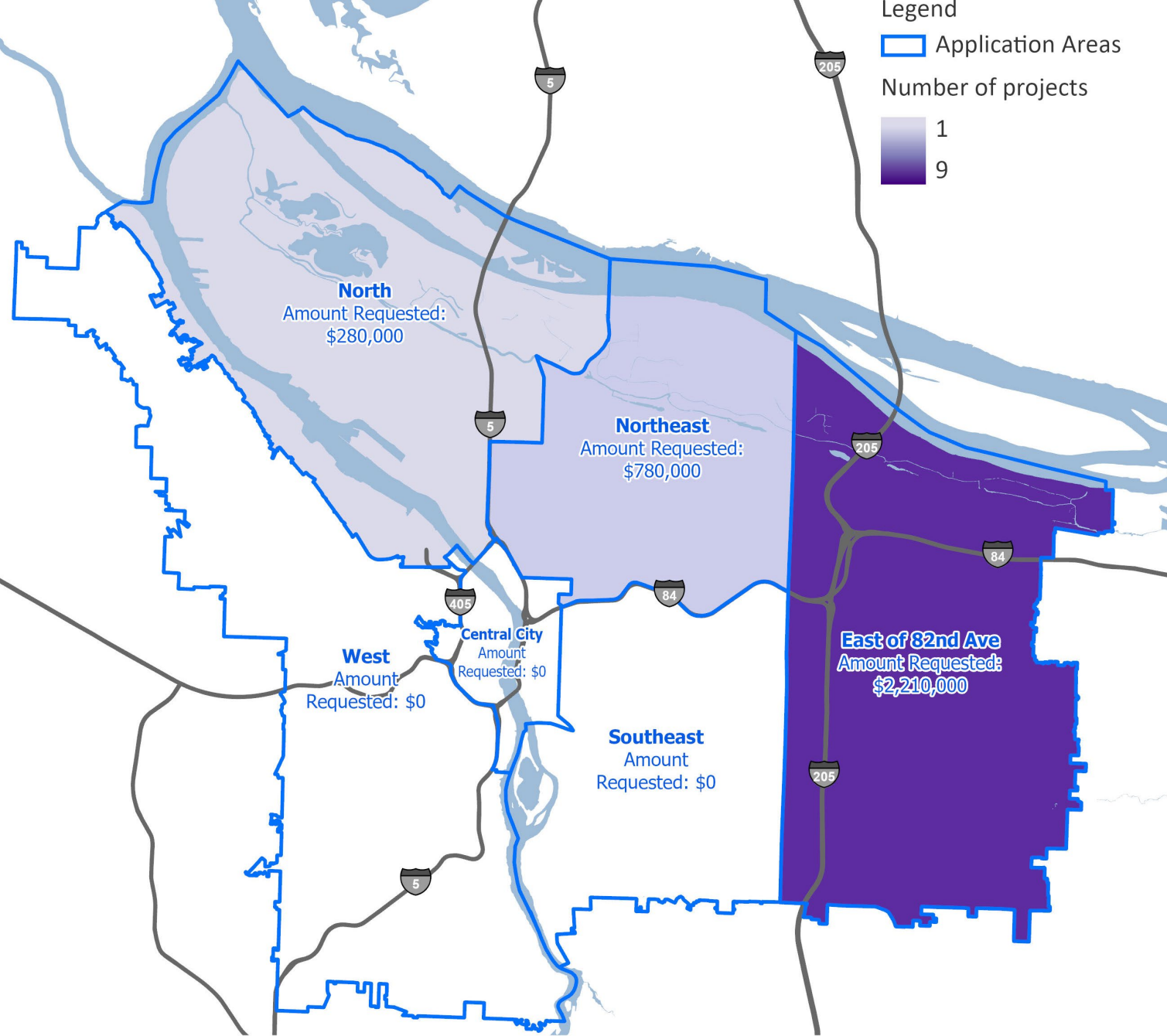


City of Portland, Oregon

Some projects which include physical improvements could not be mapped as the project sites have not yet been identified. These projects requested a total of ~\$1,000,000.

# Portfolio B

## Project proposals which include physical improvements



**Legend**

Application Areas

Number of projects

1

9

NORTH

0 1 2 Miles

The information on this map was derived from City of Portland GIS databases. Care was taken in the creation of this map but it is provided "as is". The City of Portland cannot accept any responsibility for error, omissions or positional accuracy.

The City of Portland ensures meaningful access to city programs, services, and activities to comply with Civil Rights Title VI and ADA Title II laws and reasonably provides: translation, interpretation, modifications, accommodations, alternative formats, auxiliary aids and services. To request these services, contact 503-823-7700, City TTY 503-823-6868, Relay Service: 711.



Bureau of Planning and Sustainability  
Innovation. Collaboration. Practical Solutions.



City of Portland, Oregon

Some projects which include physical improvements could not be mapped as the project sites have not yet been identified. These projects requested a total of ~\$1,000,000.

# Break



# Approval of summary report to Council

COMMUNITY IS KEY



# THANK YOU!

PORTLAND  
CLEAN ENERGY  
COMMUNITY BENEFITS  
FUND



Bureau of Planning and Sustainability

VISIT US ONLINE  
[portland.gov/bps/cleanenergy](http://portland.gov/bps/cleanenergy)