



Portland Planning and Sustainability Briefing

Presenters:

Rachael Hoy, BPS

Patrick Sweeney, PBOT

Megan Neill, Multnomah County

Jeff Heilman, Parametrix

Department of Community Services
Transportation Division

February 23, 2021

Project Overview

Purpose and Need



Seismic Resiliency and Emergency Response



Regional Recovery and Rebuilding



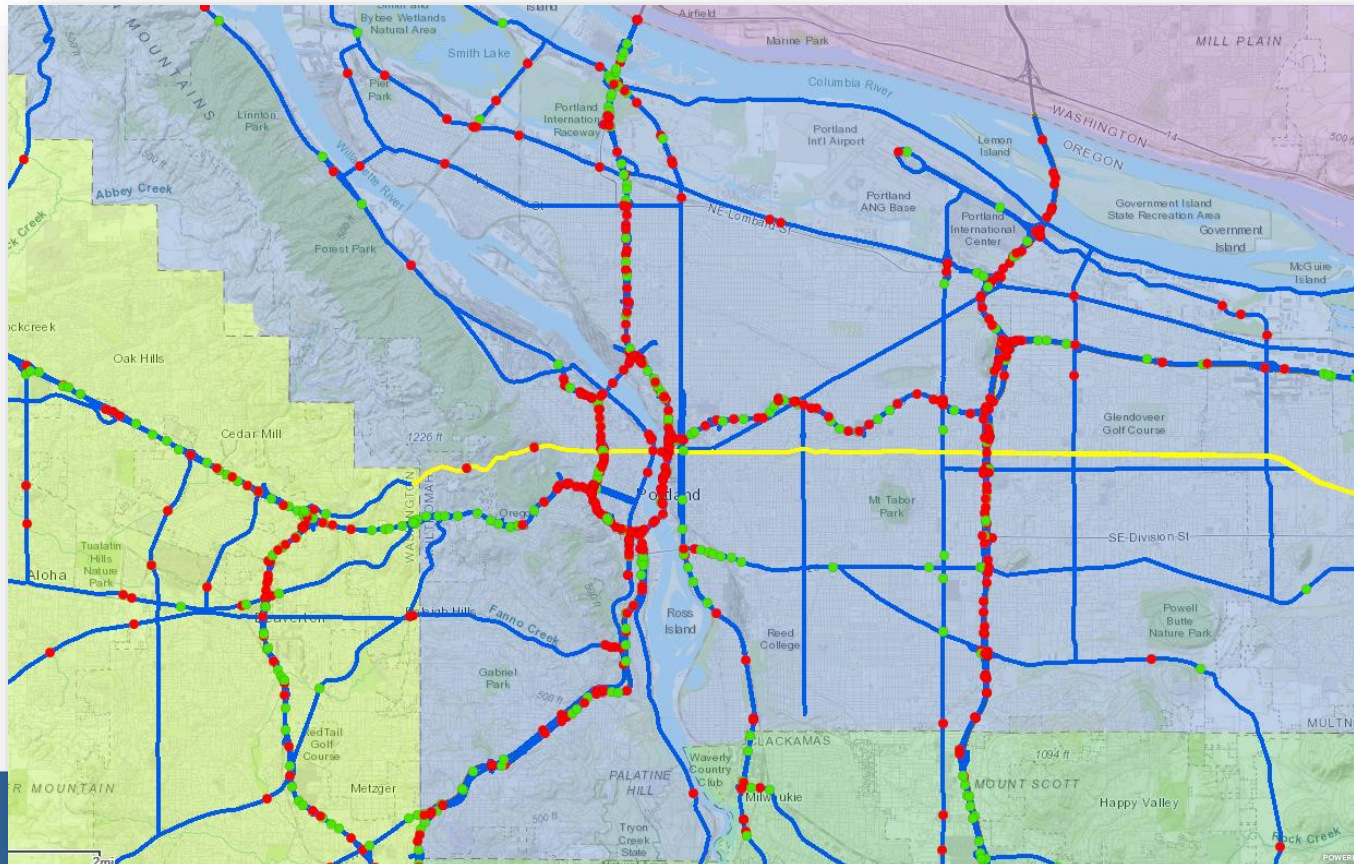
Long-term Use



Project Overview

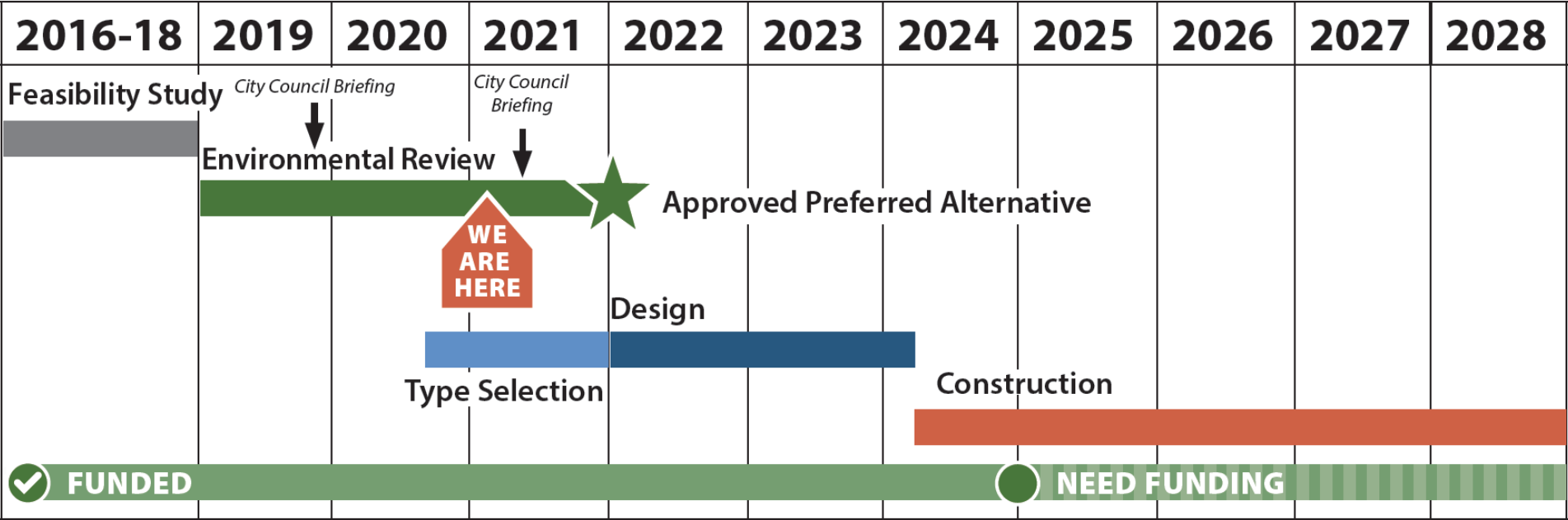
Why Burnside?

- Regional lifeline route
- Runs almost 19 miles, from Washington County to Mount Hood Highway (US 26)
- Located in the heart of downtown, it is a key link across the Willamette River
- Fewest risks of having overpasses collapse on it during an earthquake



Project Timeline

Sept. 2019 & Aug. 2020
Briefed Portland Planning and Sustainability Commission



Over 100 briefings with community groups

Community Groups

- **Social Services**
- **Neighborhood and Business Associations**
- Transportation groups
- Urban Design
- Adjacent Neighbors
- River Users
- Contracting Community
- City Committees

Agency Coordination

- City Bureaus
- Regional, State and Federal

Project Committee Meetings

- 23 Community Task Force
- 10 Senior Agency Staff Group
- 4 Policy Group



Engagement and Coordination

Diversity, Equity and Inclusion (DEI)

- Project DEI Plan
- DEI Committee
- Social Services Working Group
- Community Engagement Liaisons Program
- Other diverse engagement
 - NAACP
 - Asian Pacific American Network
 - Coalition of Communities of Color
 - Voz
 - MultCo ACHIEVE Program
 - Native American Youth and Family Center
 - Native American Rehabilitation Association
 - Vancouver Baptist Church
 - Immigrant and Refugee Community Org.





SUSTAINABILITY

- *Resiliency planning and coordination*
- *Greenroads*
- *Environmental Justice and Equity*



COMMUNITY HEALTH

- *Health Impact Assessment*
- *Multi-Modal Transportation*
- *Waterfront Park and Eastbank Esplanade*



COORDINATION

- *Utility*
- *Mitigation*
- *Permitting*
- *Incorporating other City plans*





Draft Environmental Impact Statement



Technical Reports

- Acquisitions and Relocations
- Air Quality
- Climate Change*
- Economics
- Environmental Justice
- Equity*
- Floodplain and River Hydraulics
- Geology
- Hazardous Materials
- Health Impact Assessment*
- Historic and Archaeological Resources
- Land Use
- Noise and Vibration

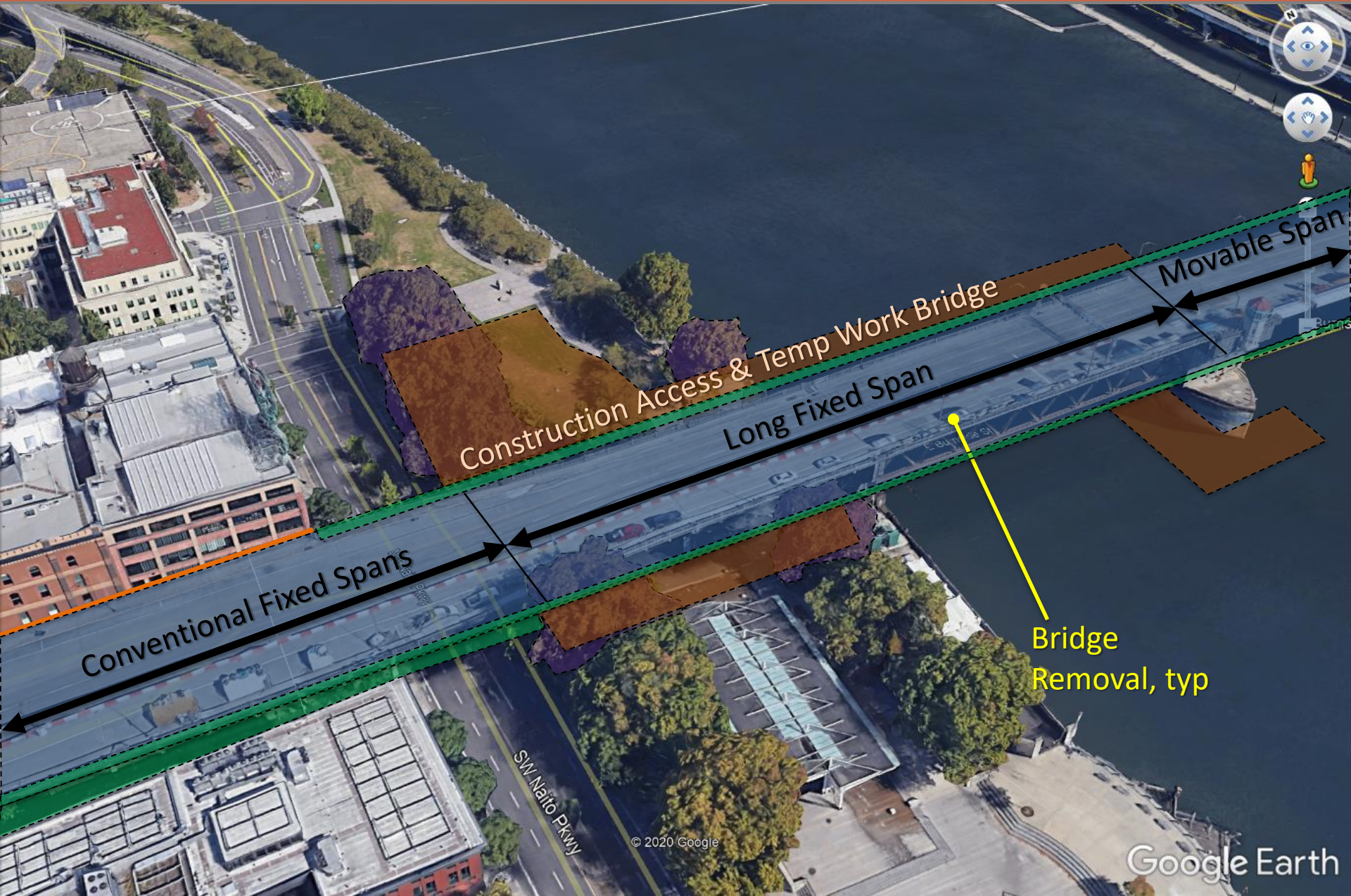
- Parks and Recreation
- Public Services
- Right of Way
- River Navigation
- Social and Neighborhood Resources
- Transportation
- Utilities
- Vegetation, Wildlife, and Aquatic Resources
- Visual and Aesthetic Resources
- Water Quality
- Wetlands and Waters
- Section 4(f) Evaluation



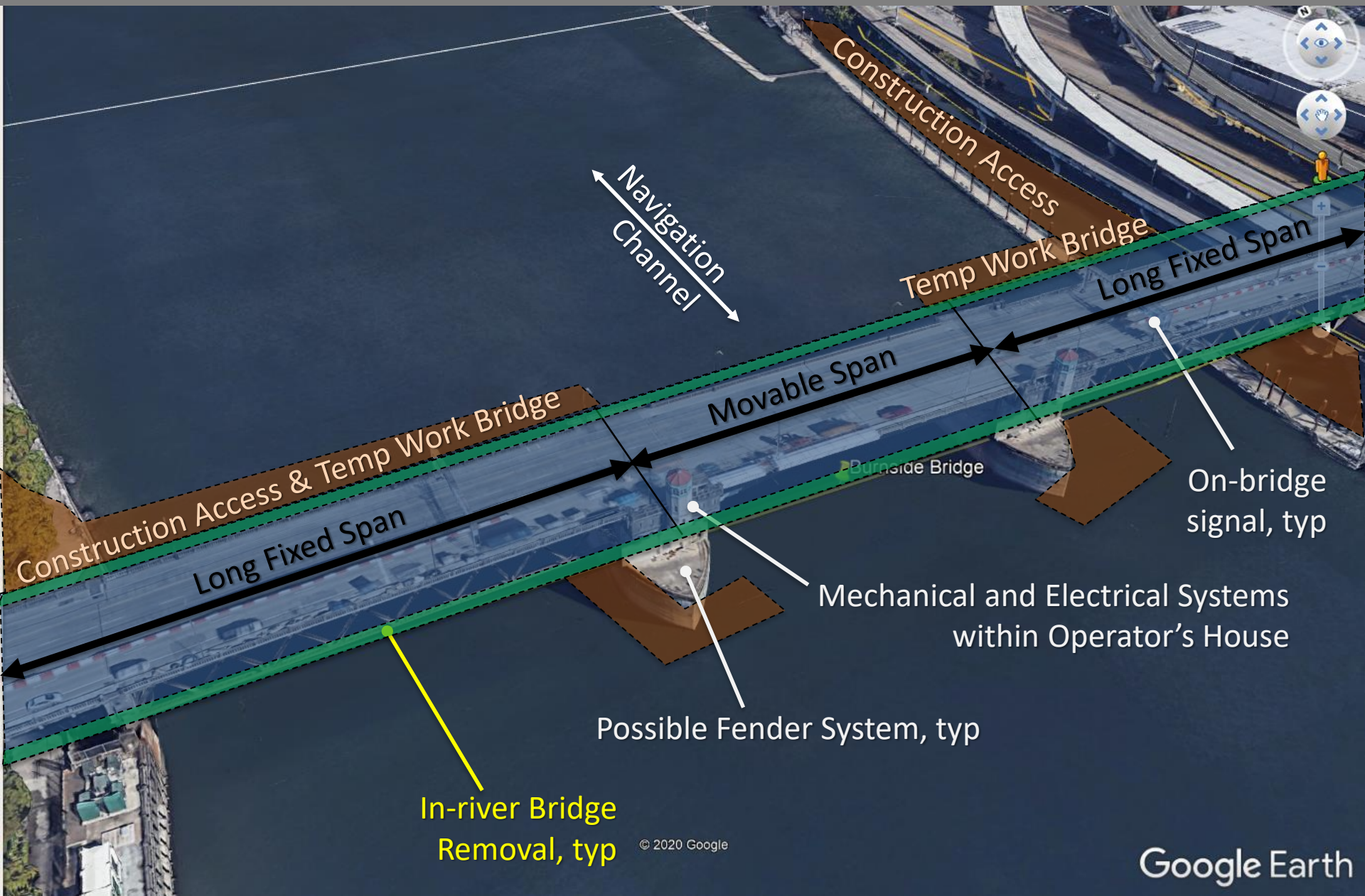
Project Elements – West Approach



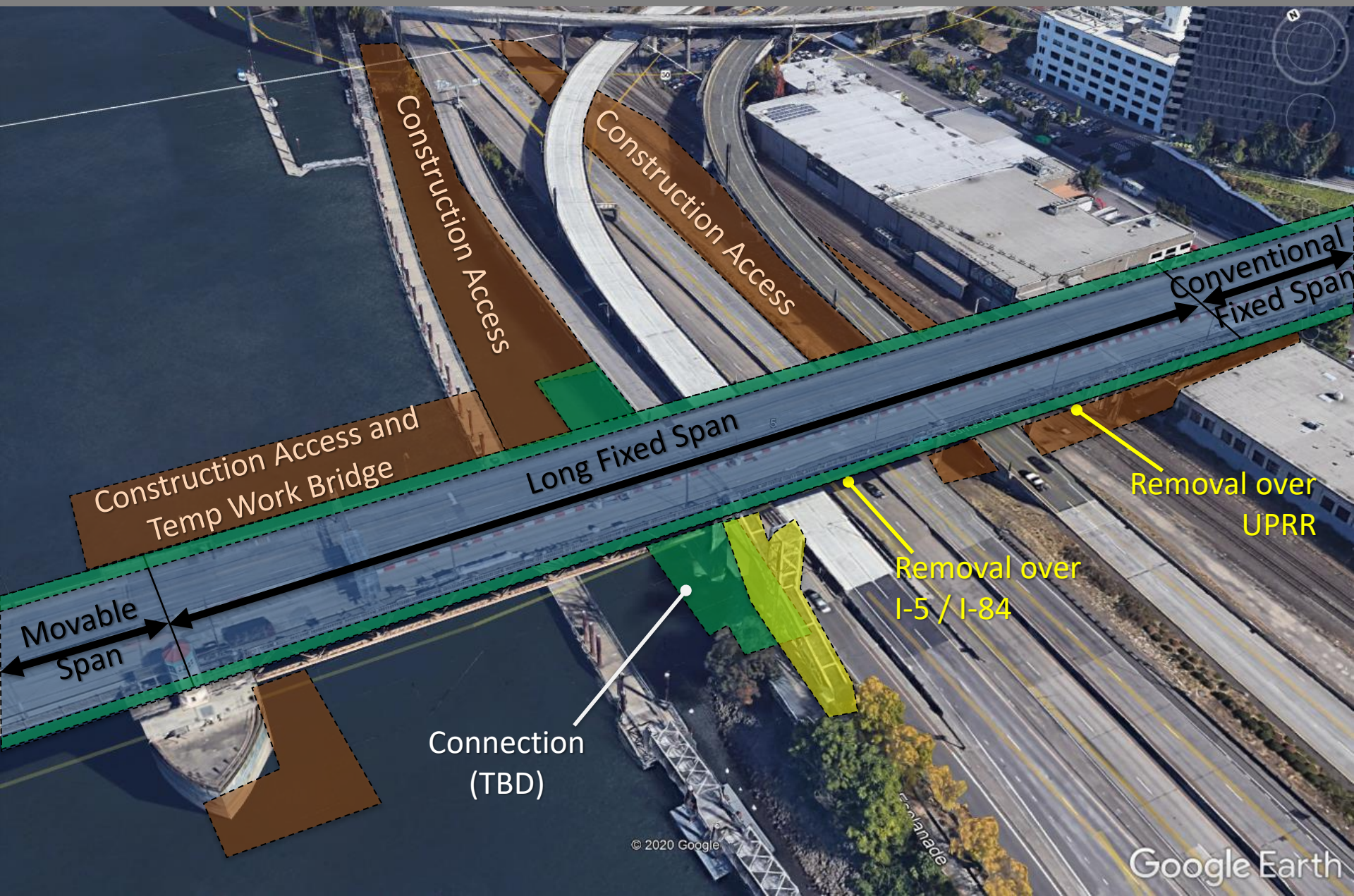
Project Elements – West Approach



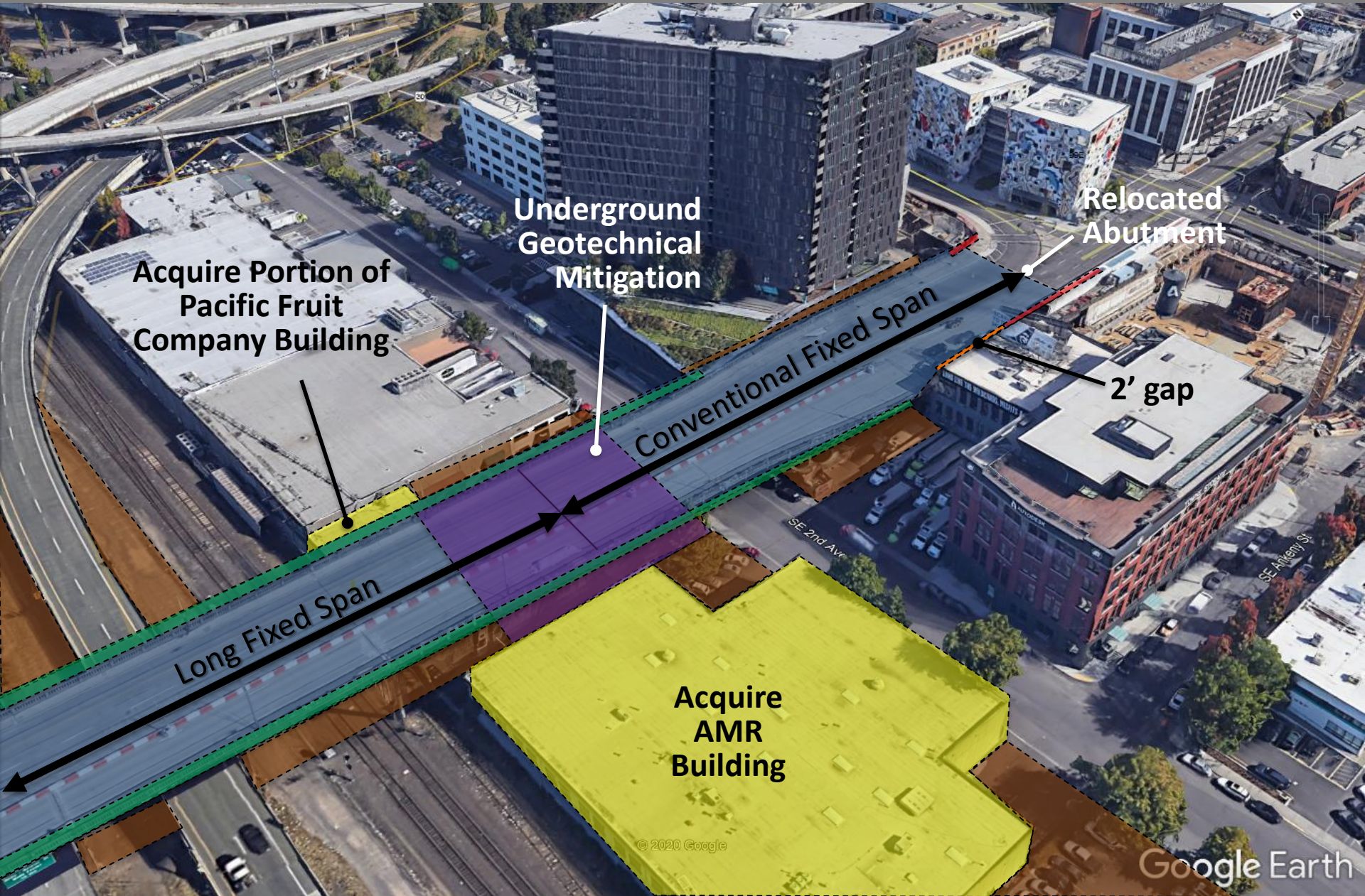
Project Elements – Movable Span



Project Elements – East Approach



Project Elements – East Approach



Recommended Preferred Alternative

Replacement Long Span - come in different types...

Tied Arch



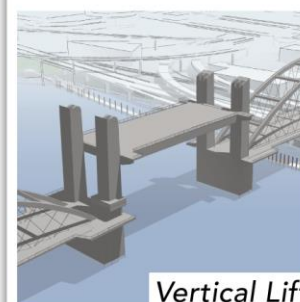
Cable Supported



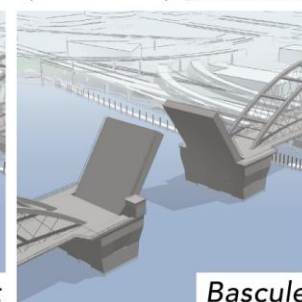
Truss



MOVABLE SPAN TYPES (EXAMPLE)



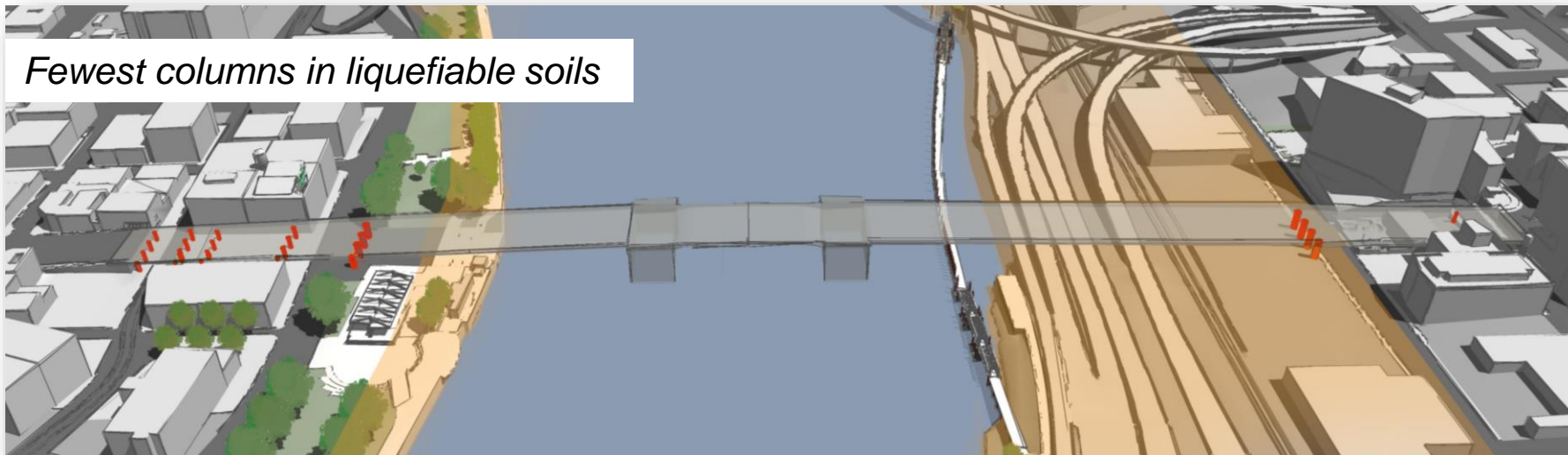
Vertical Lift



Bascule

Recommended Preferred Alternative

Replacement Long Span



BENEFITS

- Best for seismic resiliency
- Least cost alternative
- Enhances/preserves community resources
- Improves safety for bike/ped/ADA
- Least impacts to natural resources

IMPACTS

- Removes historic Burnside Bridge

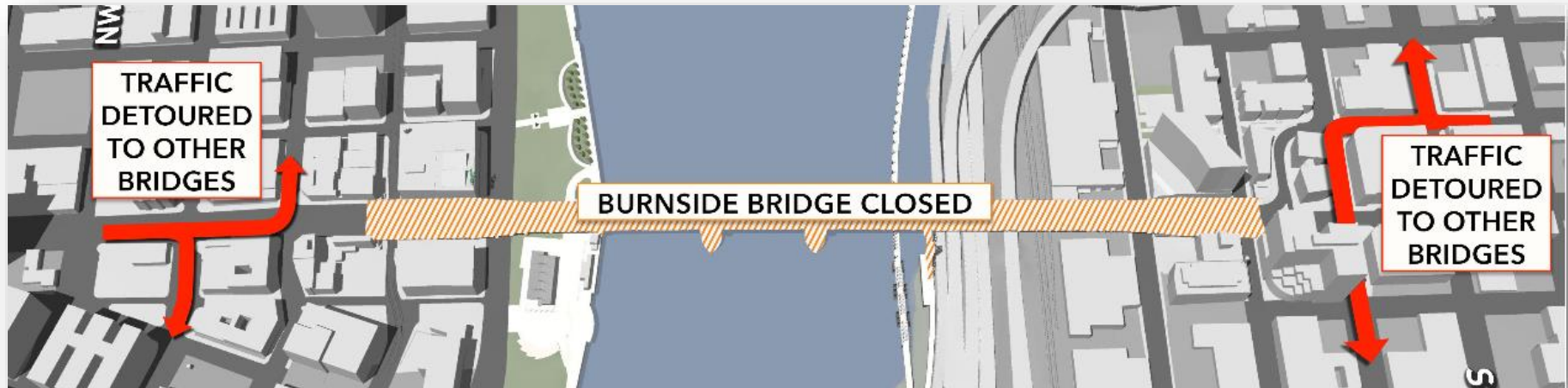
CONSIDERATIONS

- Views



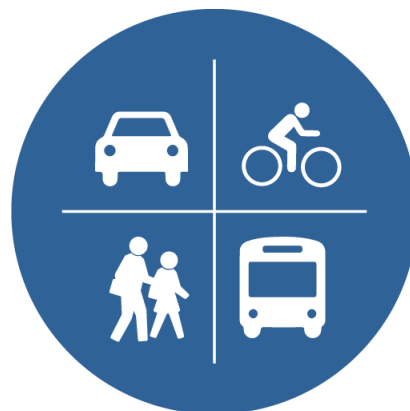
Recommended Preferred Alternative

Traffic During Construction: Full Bridge Closure



- **Least cost** (building a temporary bridge would add \$90 million to the project cost)
- **Shortest construction duration** (temporary bridge would add 1.5 – 2 years to construction duration, extending duration of impacts to surrounding area including parks, residents, recreational activities and transportation)
- **Least impact to natural resources** (temporary bridge adds in-water construction)

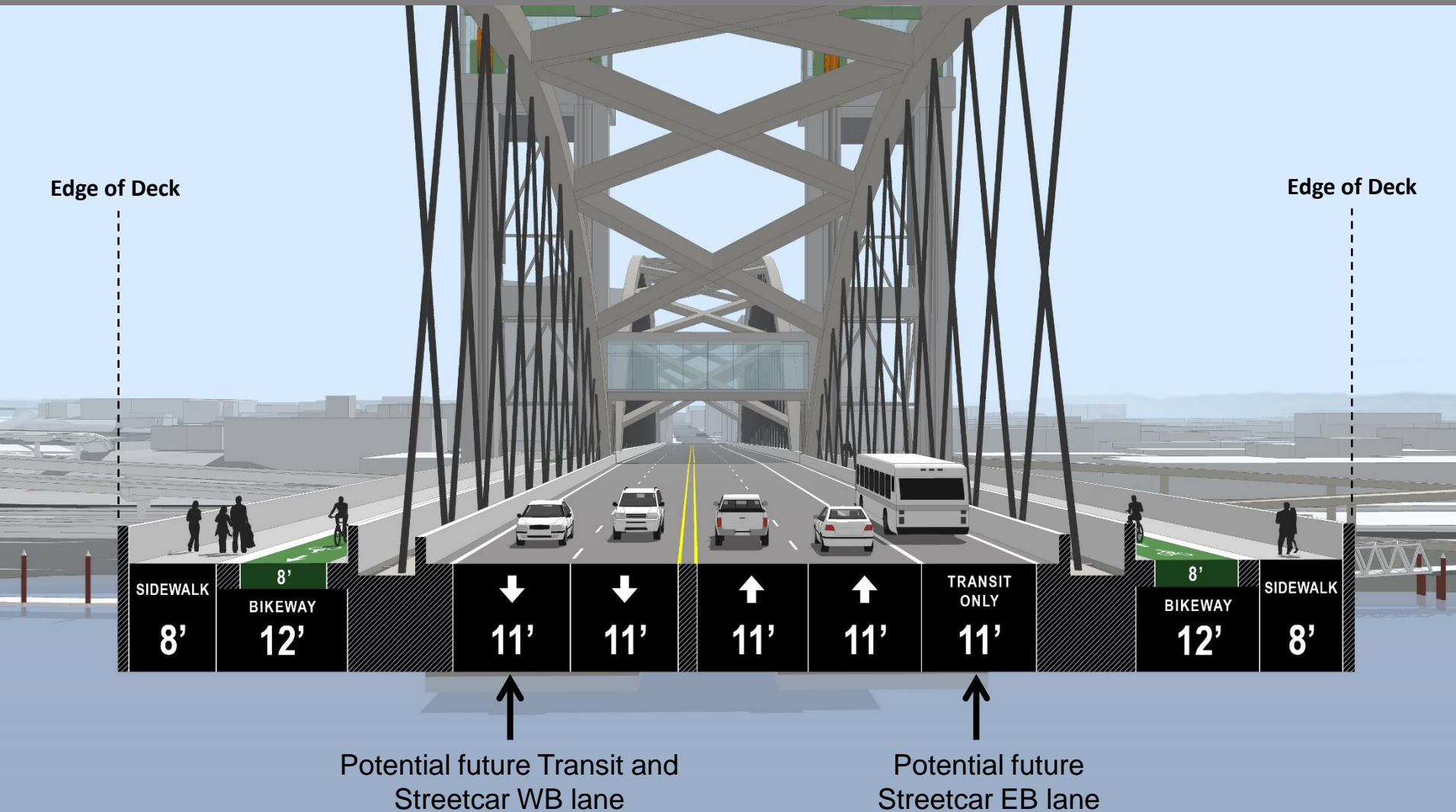




Bike/Ped/ADA Connections

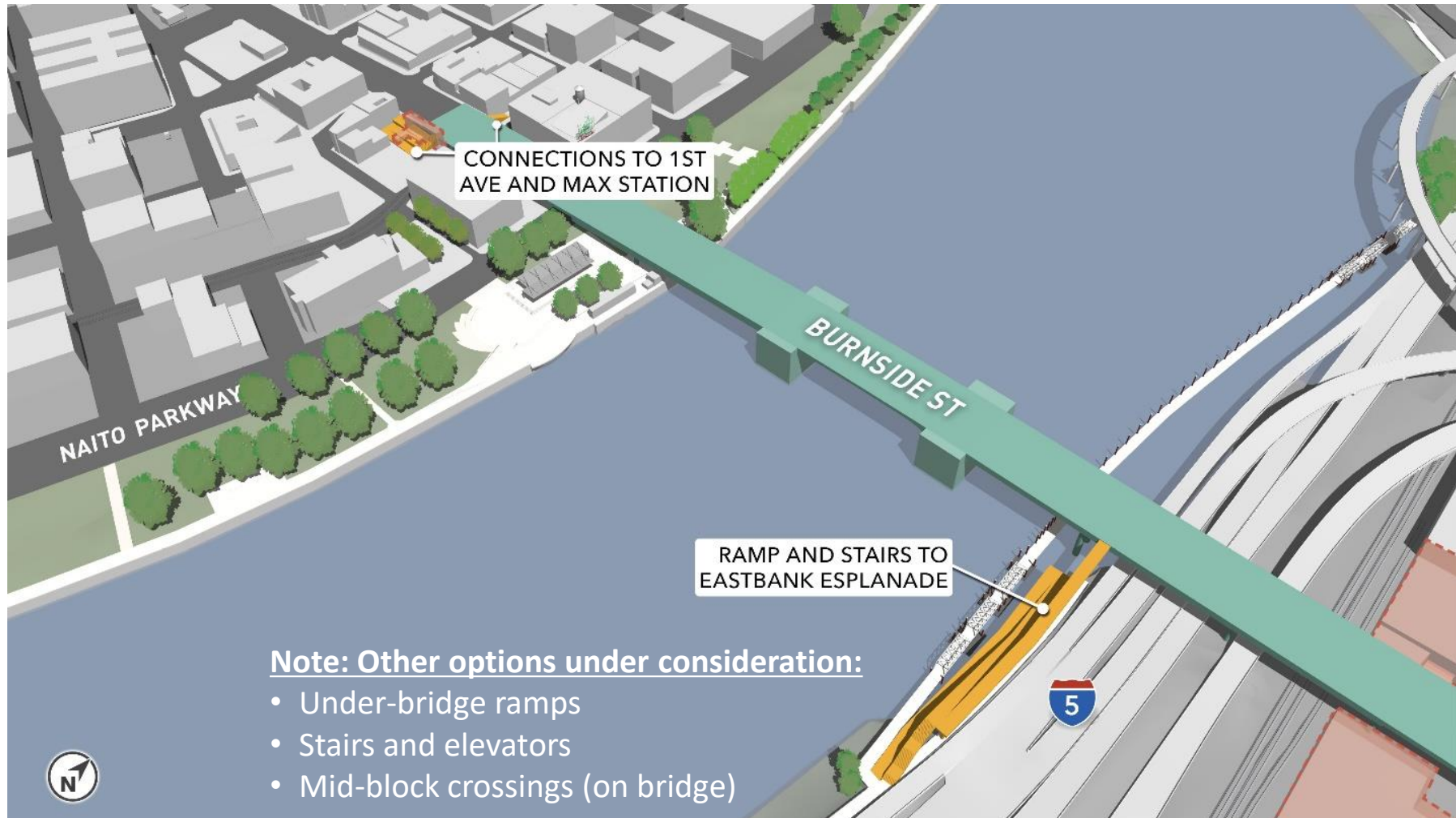


Typical Cross Section



Bike/Ped & ADA Access

Potential Access Options



Outreach: Draft Environmental Impact Statement



February 5 – March 22



Objective: Share findings of the environmental analysis and allow for public review and comment on the DEIS. 45-day comment period.

Key Activities:

- Online open house
- Briefings
- In-person hearing by appointment
- Voicemail, emails, comment form, snail mail
- E-newsletters, news releases and social media



Visit: [**BurnsideBridge-EIS.Participate.Online**](https://BurnsideBridge-EIS.Participate.Online)

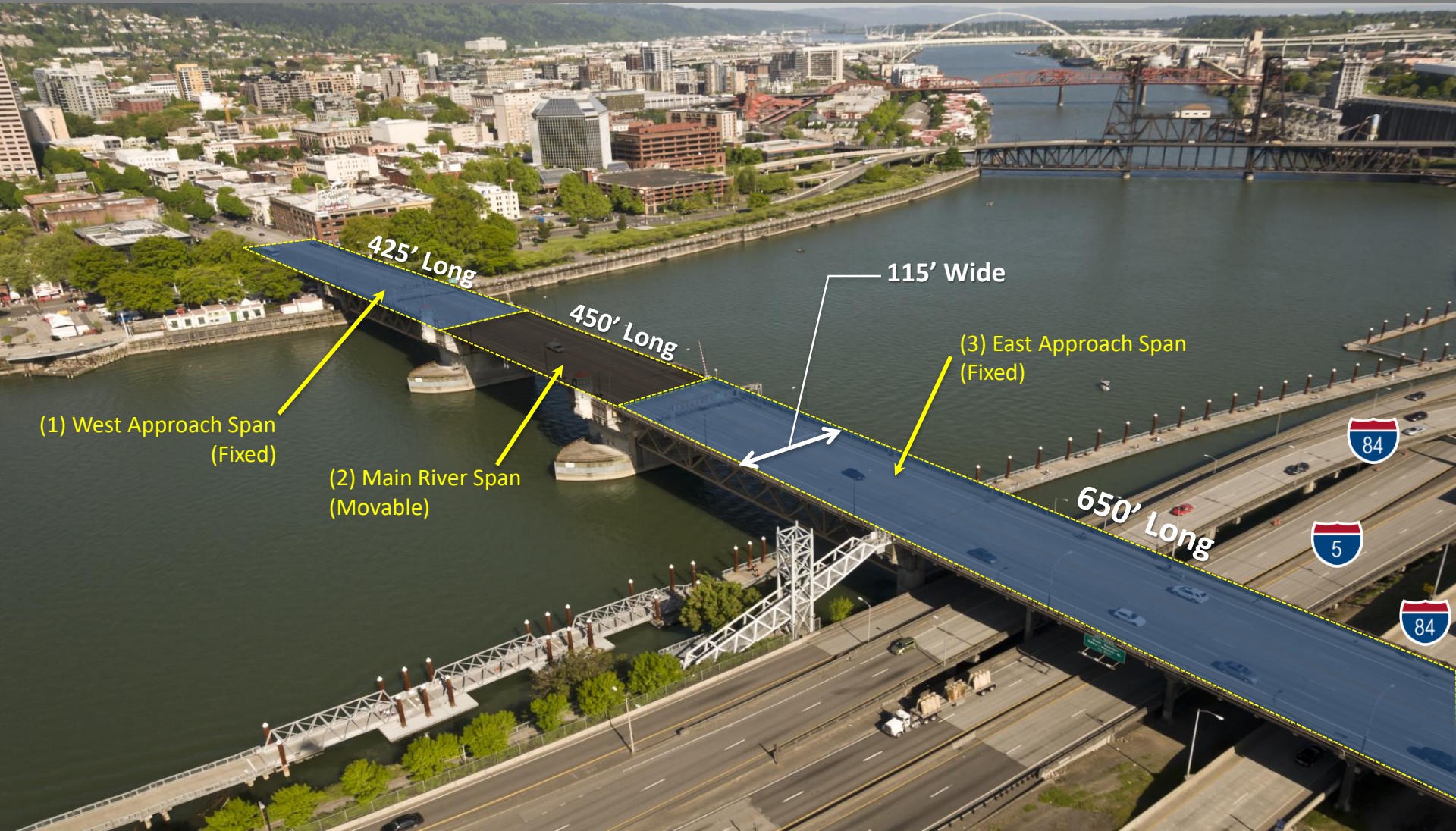


Bridge Type Selection



Range of Bridge Types

Long-span Alternative: "Three bridges in one"



Range of Bridge Types

Long Span

Tied Arch



Truss



Cable Supported



Girder (applicable to west approach only)



Range of Bridge Types

Movable Span

Lift



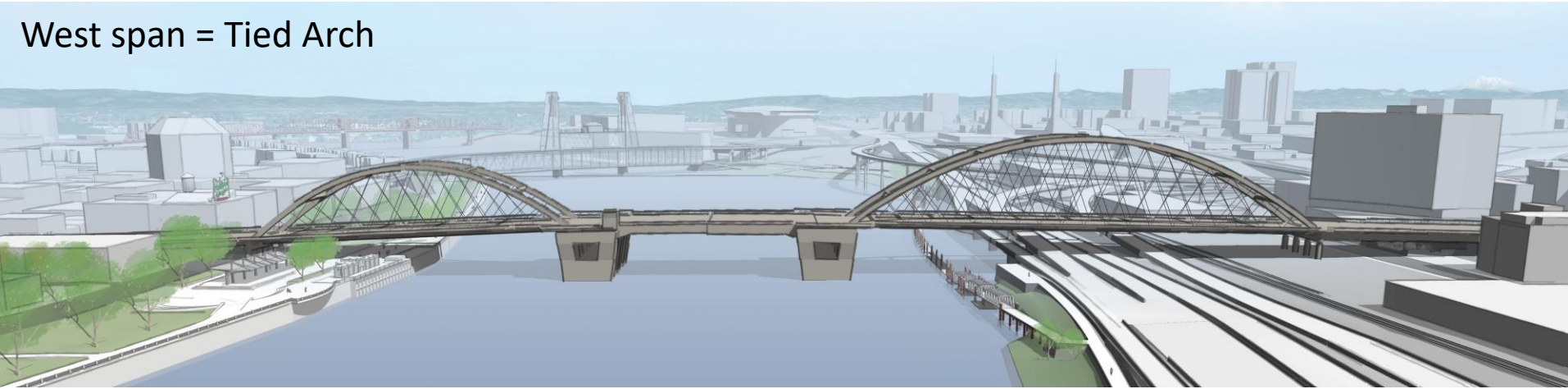
Bascule



Range of Bridge Types

Tied Arch + Bascule Variations

West span = Tied Arch



West span = Girder



(Example concept images)

Range of Bridge Types

Tied Arch + Lift Variations

West span = Tied Arch



West span = Girder

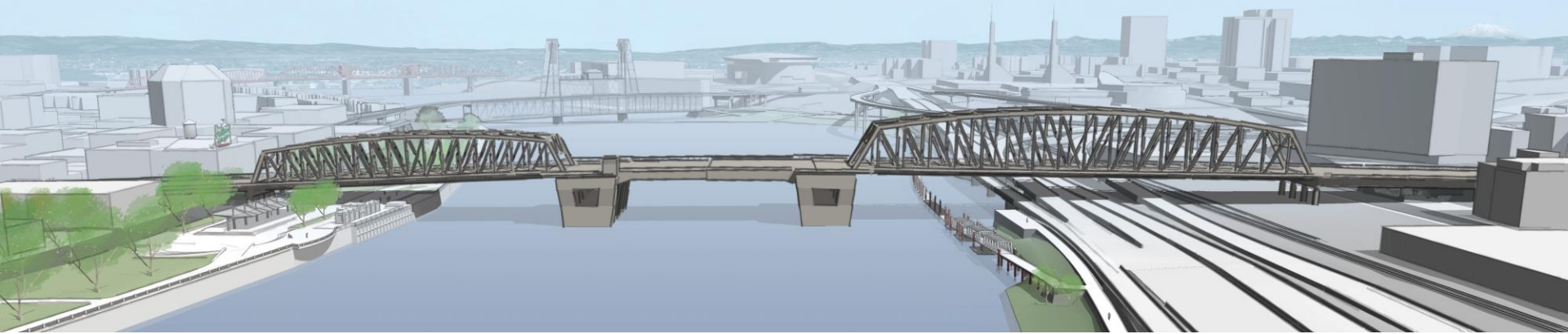


(Example concept images)

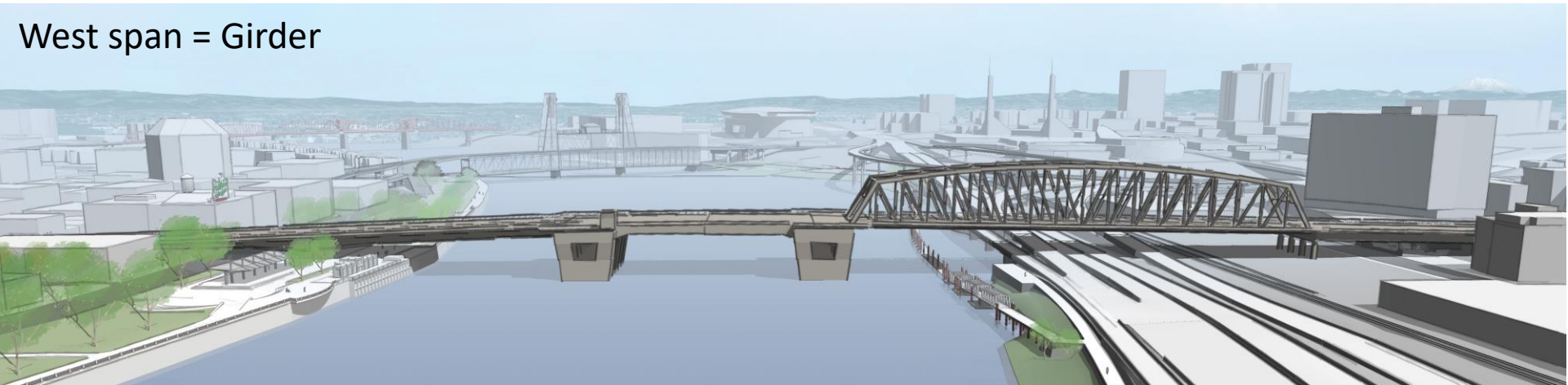
Range of Bridge Types

Truss + Bascule Variations

West span = Truss



West span = Girder



(Example concept images)

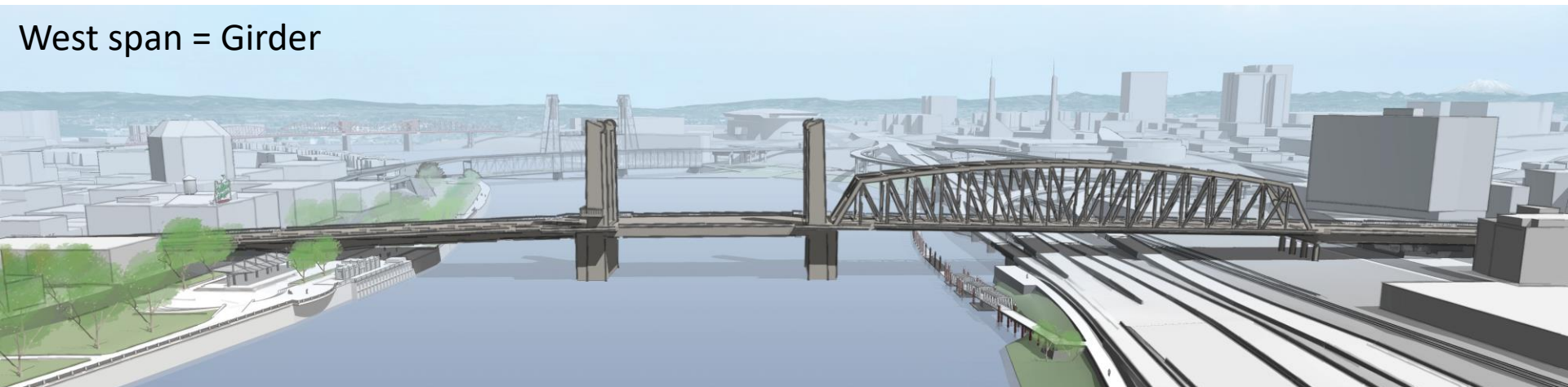
Range of Bridge Types

Truss + Lift Variations

West span = Truss



West span = Girder

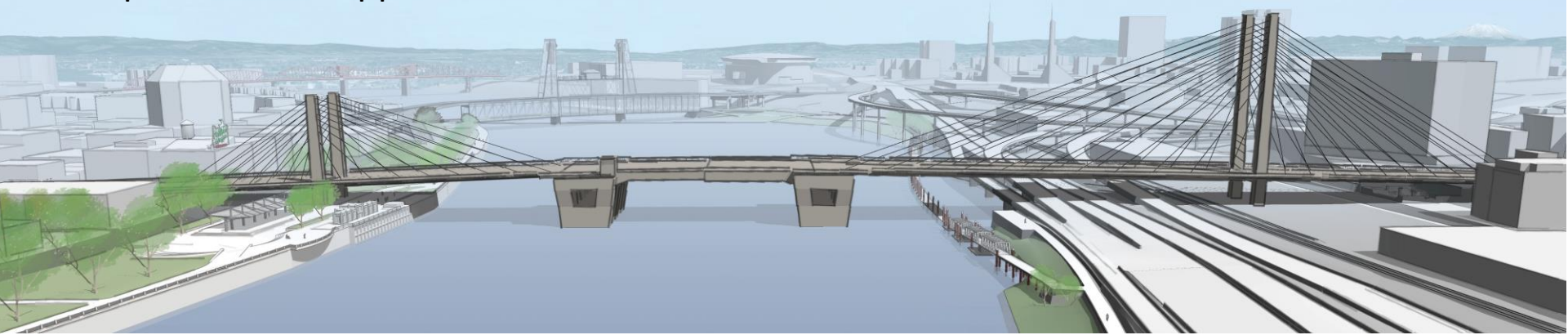


(Example concept images)

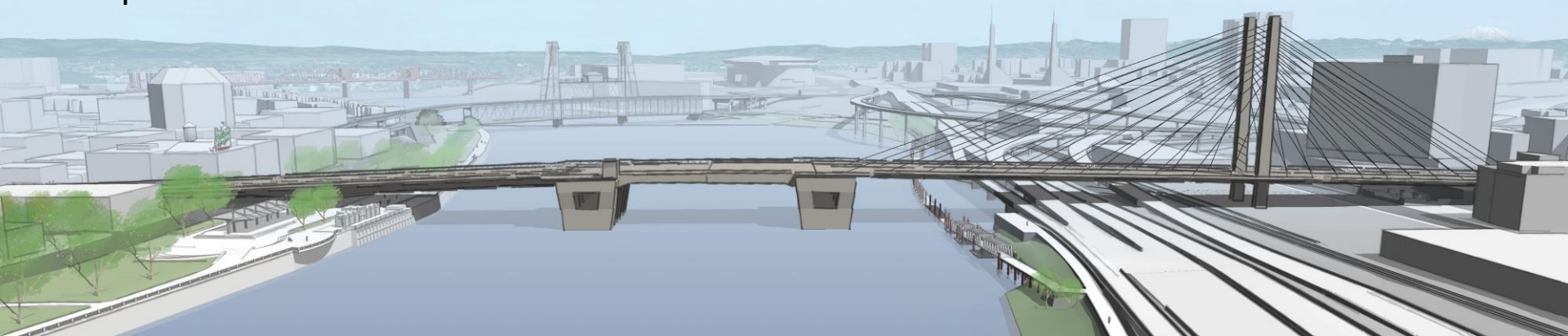
Range of Bridge Types

Cable Supported– Bascule Variations

West span = Cable Supported



West span = Girder



(Example concept images)

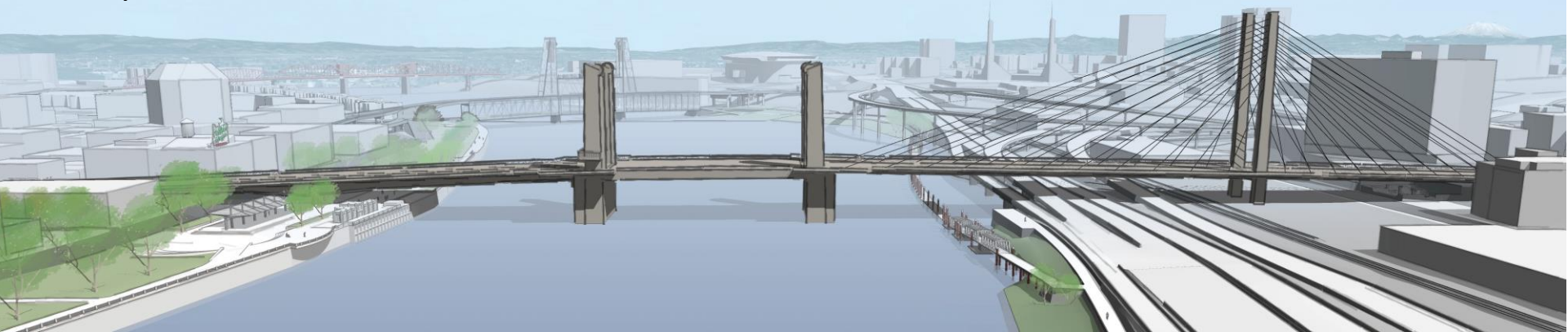
Range of Bridge Types

Cable Supported– Lift Variations

West span = Cable Supported



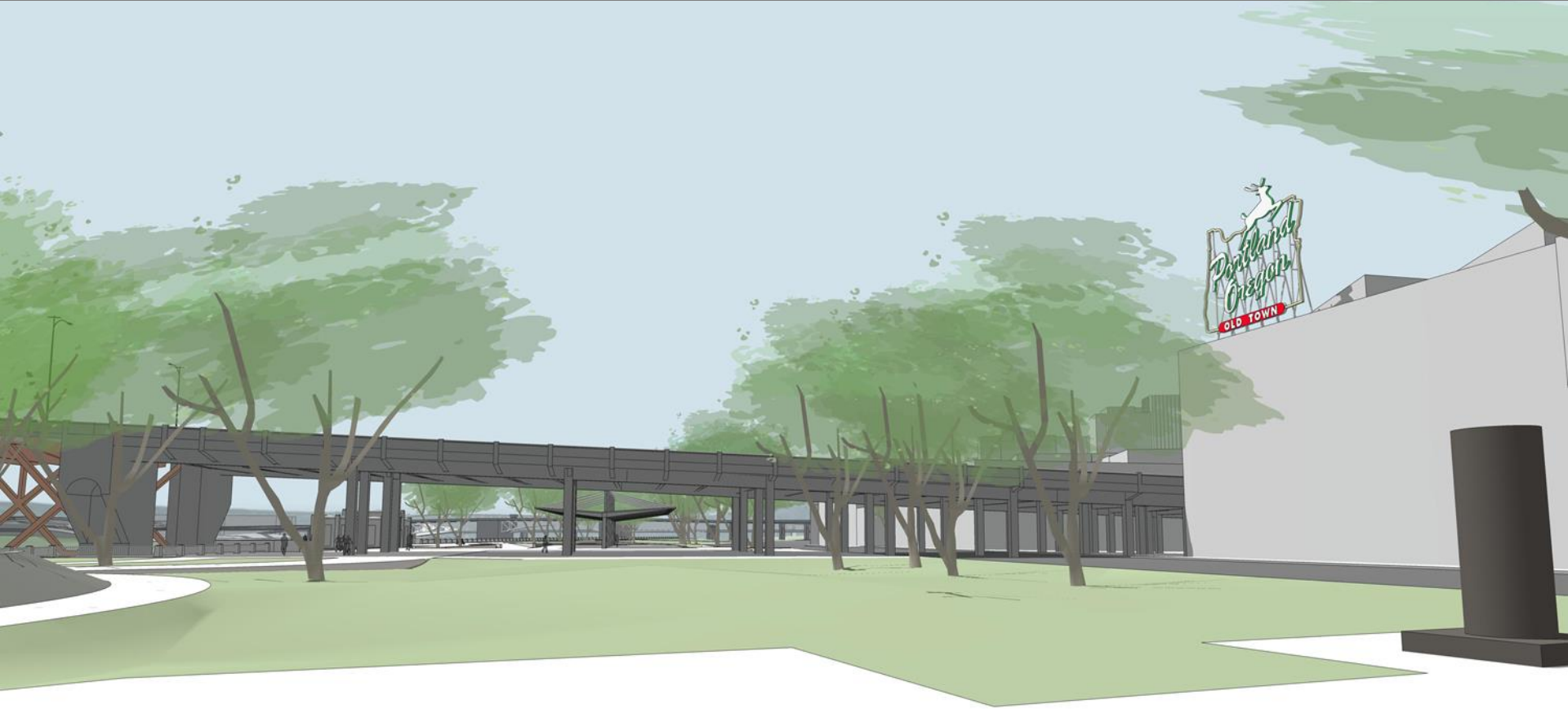
West span = Girder



(Example concept images)

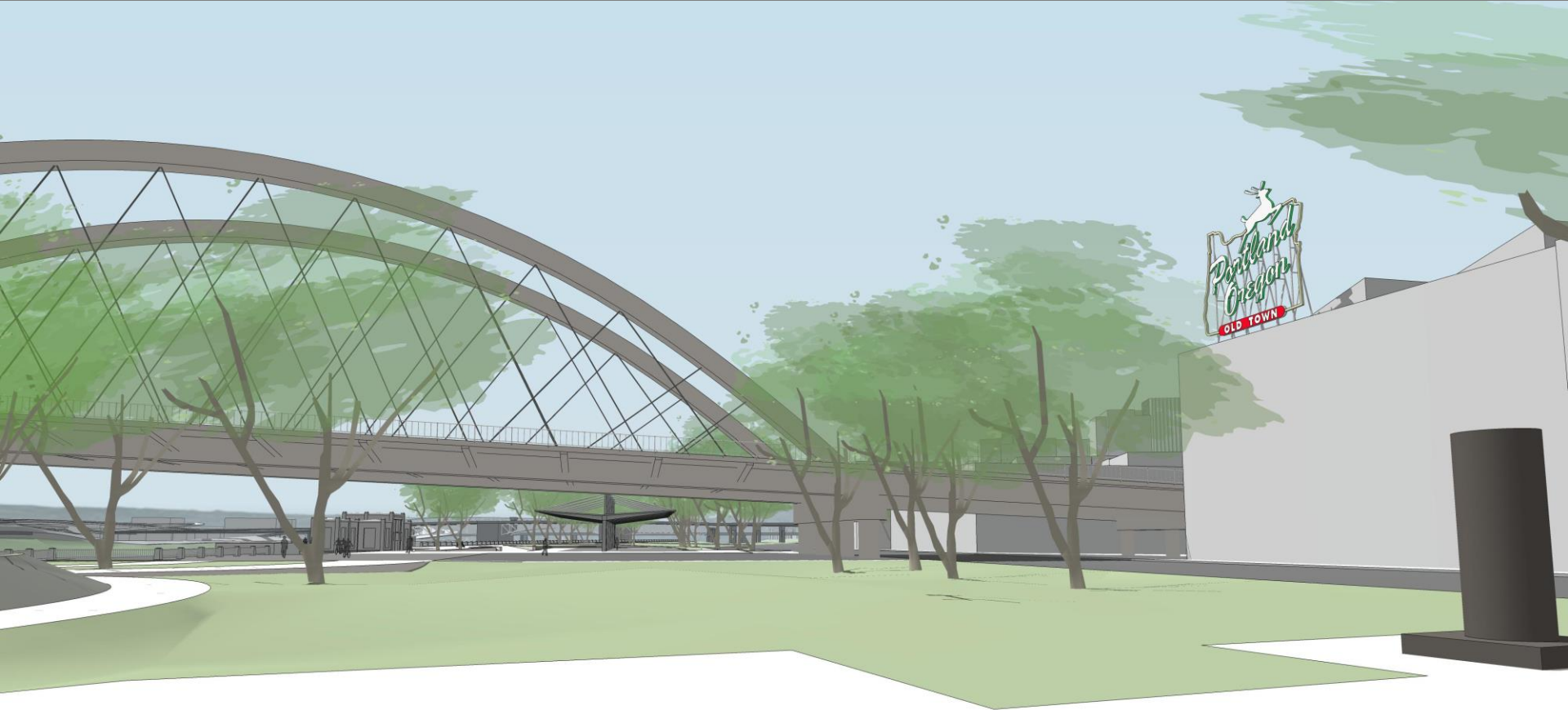
Range of Bridge Types

Waterfront Park: Existing Condition



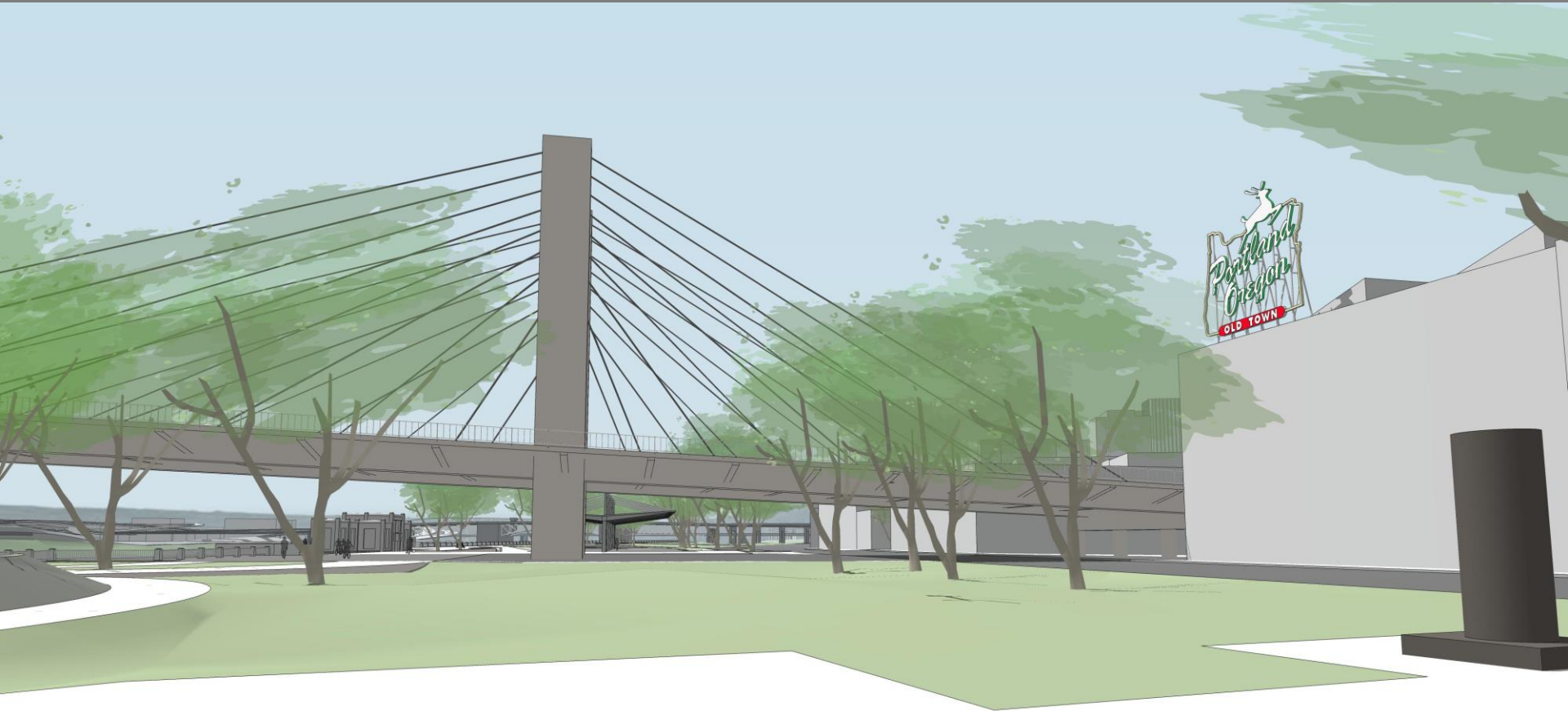
Range of Bridge Types

Waterfront Park: Tied Arch Bridge Option



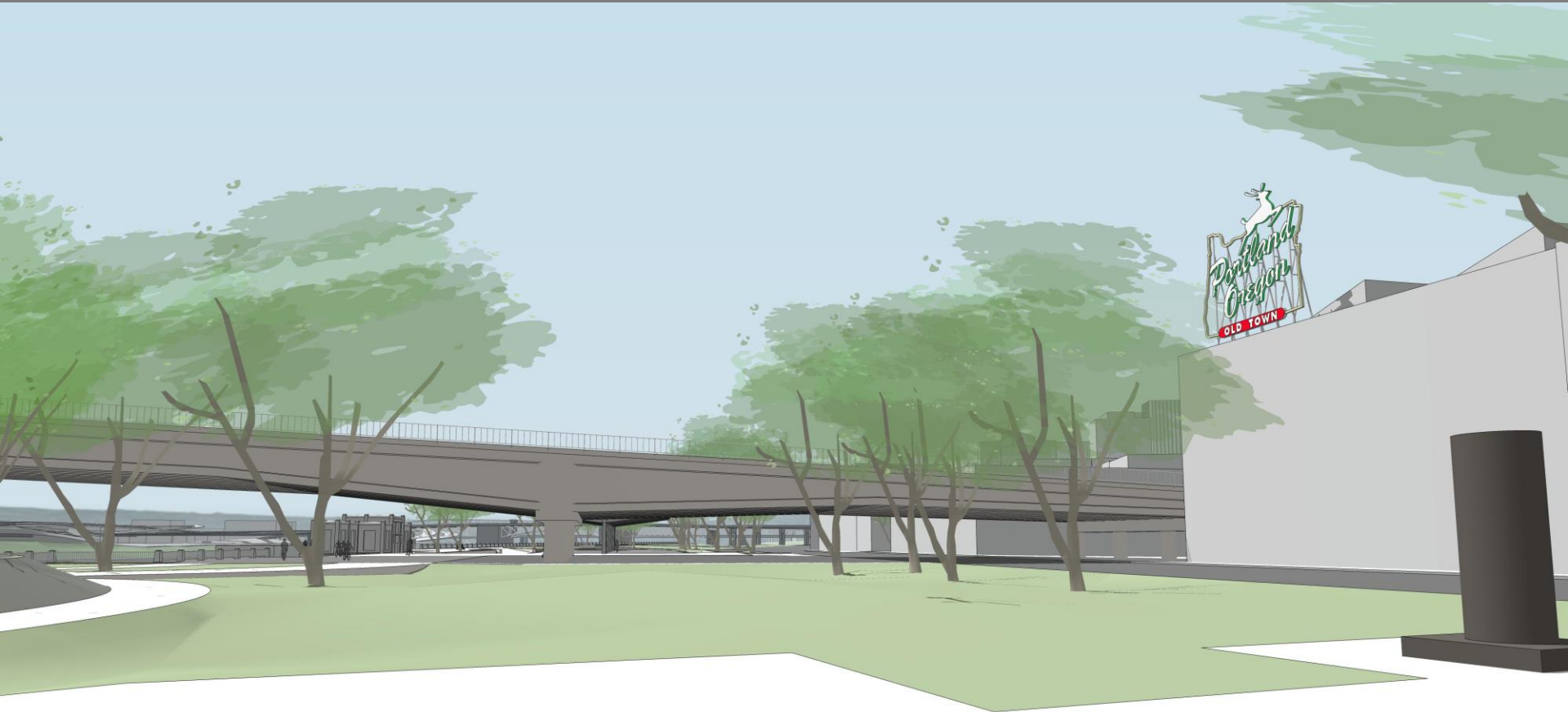
Range of Bridge Types

Waterfront Park: Cable Stayed Option



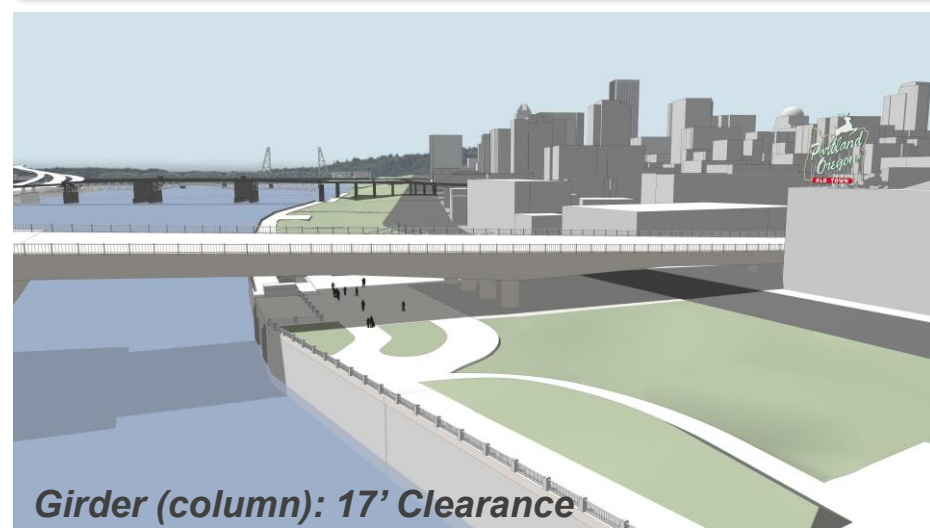
Range of Bridge Types

Waterfront Park: Girder Option



Range of Bridge Types

West Girder Option Comparison



Evaluation Criteria Topics

Human Experience & Bridge Surroundings

- On-bridge Experience
- Below-bridge Experience
- Relation to Surroundings
- Pedestrian and Cyclist Connectivity

Overall Look & Feel of the Bridge

- Bridge Overall Look
- Bridge Form and Style
- Flexible Design

Cost & Construction Impacts to Users

- Total Project Cost
- Long Term Costs
- Construction Impacts



Outreach: Bridge Type Selection

January 22 – February 21



Objective: Gather input on range of bridge types and evaluation topics

Key Activities:

- Virtual Briefings
- Online Open House and Survey
- Videos
- Webinar
- E-newsletters, news releases and social media
- Diverse outreach through the Community Engagement Liaisons program



Learn more at: bit.ly/NewBurnsideBridge

ENVIRONMENTAL REVIEW (EIS)

- **February/March 2021:** Comment period on Draft Environmental Impact Statement (DEIS)
- **Spring/Summer 2021:** Review and address DEIS comments and update mitigation
- **Fall 2021:** Final Environmental Impact Statement and Record of Decision

BRIDGE TYPE SELECTION

- **January/February 2021:** Outreach on Range of Bridge Types and Criteria
- **March 2021:** Policy Group Approval of Bridge Type Options and Evaluation Criteria
- **June 2021:** Community Outreach on Recommended Bridge Type
- **July 2021:** Policy Group and Multnomah County Board of County Commissioners Approval of Bridge Type



Thank you!



Learn more at **BurnsideBridge.org**

