

An aerial map of Portland, Oregon, showing the city's urban layout. The map is overlaid with various design annotations, including black arrows indicating movement or flow, green lines highlighting specific corridors or boundaries, and yellow rectangular blocks representing building footprints or land use zones. The Willamette River is visible on the left side of the map.

Exhibit A

STATE OF THE CITY DESIGN REPORT 2016

PORTLAND
DESIGN COMMISSION
19 APRIL 2017

DESIGN COMMISSIONERS

JULIE LIVINGSTON

DEVELOPMENT

DON VALLASTER

ARCHITECTURE

SAM RODRIGUEZ

PUBLIC AT LARGE

JESSICA MOLINAR

ARCHITECTURE

ANDREW CLARK

DEVELOPMENT

TAD SAVINAR

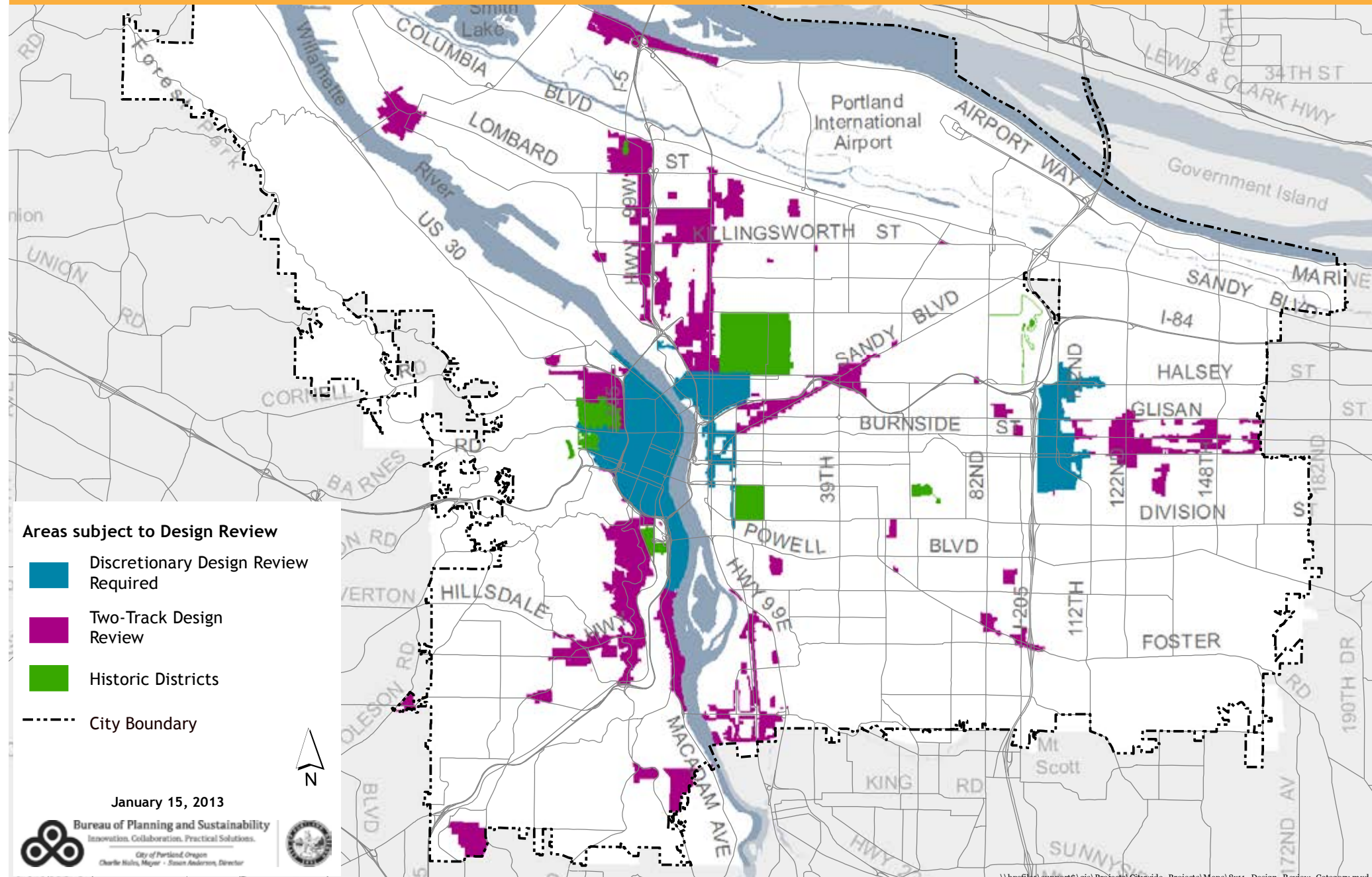
URBAN DESIGN

CHAIR

DAVID WARK

RACC

DESIGN REVIEW AREAS



PORTLAND



PDX AND GROWTH



PUBLIC PROJECTS



LARGE PROJECTS



AFFORDABLE HOUSING PROJECTS



HOUSING PROJECTS



HOUSING PROJECTS



CENTRAL CITY PLAN DESIGN GOALS

1. Encourage **urban design excellence** in the Central City;
2. Integrate urban design and preservation of our heritage into the development process;
3. Enhance the character of the Central City's districts;
4. Promote the development of diversity and areas of special character within the Central City;
5. Establish an urban design relationship between the Central City's districts and the Central City as a whole;
6. Provide for a pleasant, rich and diverse **pedestrian experience** for pedestrians;
7. Provide for the **humanization** of the Central City through promotion of the arts;
8. Assist in creating a 24-hour Central City which is safe, **humane** and prosperous;
9. Ensure that new development is at a **human scale** and that it relates to the scale and desired character of its setting and the Central City as a whole.

ACTIVE GROUND FLOORS



“STREETS AND THEIR SIDEWALKS - THE MAIN PUBLIC PLACES OF A CITY - ARE ITS MOST VITAL ORGANS.”
JANE JACOBS

DESIGN COMMISSION'S ROLE



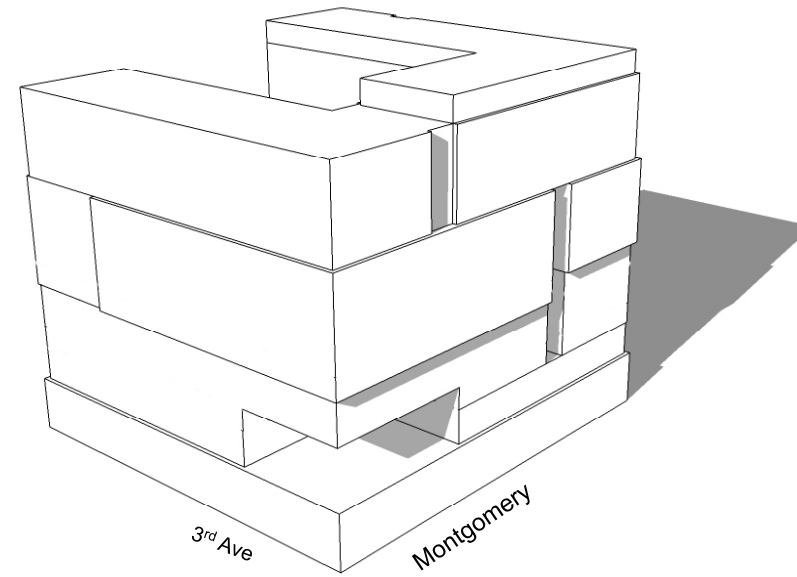
DESIGN COMMISSION'S ROLE



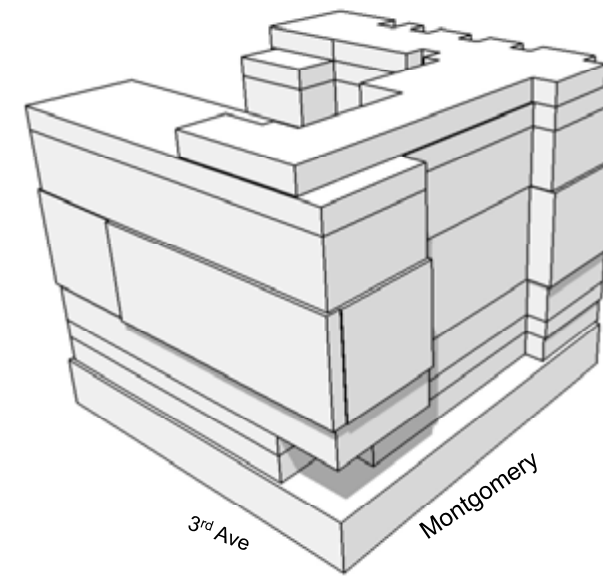
DESIGN COMMISSION'S ROLE



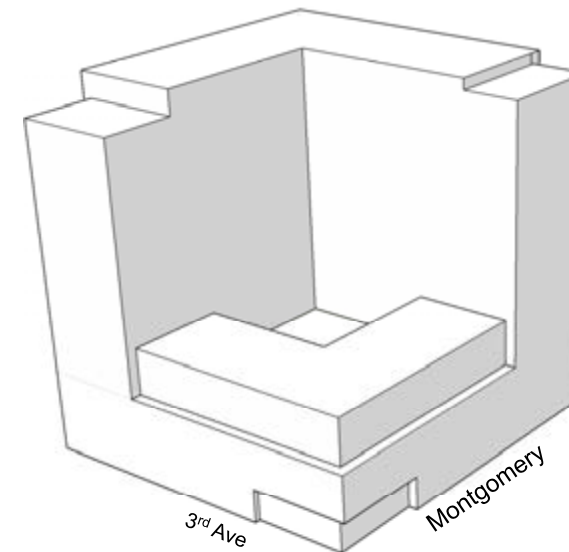
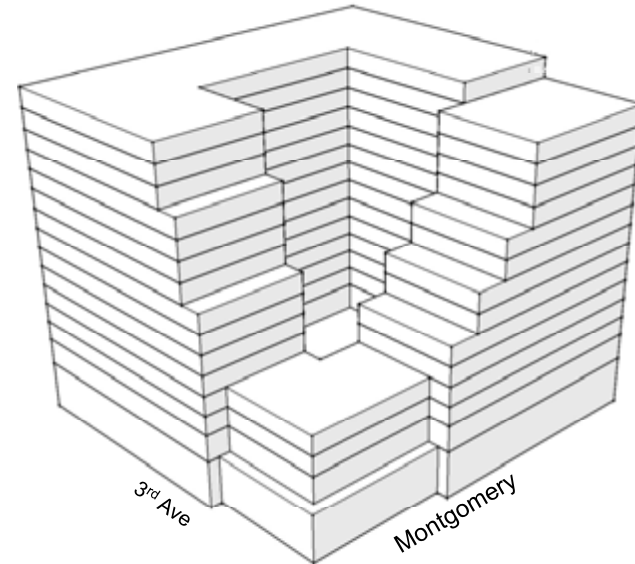
DESIGN COMMISSION'S ROLE



12/11/14 DAR I



2/19/15 DAR II



DESIGN COMMISSION'S ROLE



DESIGN COMMISSION'S ROLE



ACCOMPLISHMENTS

REVIEW AND COMMENT:

MIXED USE ZONE
RESIDENTIAL INFILL
INCLUSIONARY ZONING
CENTRAL CITY 2035 COMPREHENSIVE PLAN
PORTLAND BUREAU OF TRANSPORTATION (PBOT) BIKE SHARE PROGRAM

MEDIATED SOLUTIONS WITH PBOT AND STAKEHOLDERS:

UTILITY VAULTS IN RIGHT OF WAY
PARKING GARAGE DOORS
ARCADE DISTRICT- ELIMINATED MAJOR ENCROACHMENT PROCESS

ESTABLISHED A NEW BENCHMARK FOR FAR AND HEIGHT BONUS - BROADWAY TOWER

AUTHORED BEST PRACTICES DOCUMENT -
“A GUIDE TO THE CITY OF PORTLAND DESIGN REVIEW PROCESS”

DESIGN ADVICE

ACTIVE GROUND FLOOR USE DEFINITION

ARCADE DISTRICT - ELIMINATE LEASE FEE FOR BUILDING OVER RIGHT OF WAY

SIMPLIFY DESIGN GUIDELINES

CONSIDER A MINIMUM DEVELOPMENT THRESHOLD (MINIMUM FLOOR-AREA-RATIO)

ESTABLISH A COMPREHENSIVE STRATEGY FOR TRUCK LOADING AND SERVICE

ESTABLISH A CITIZEN ACADEMY

DESIGN EXCELLENCE



DISCUSSION

