

COMMUNITY IS KEY



# PCEF Grant Committee Meeting

Feb. 17, 2021, 6 – 7 p.m.

PORTLAND  
CLEAN ENERGY  
COMMUNITY BENEFITS  
FUND



Bureau of Planning and Sustainability

VISIT US ONLINE  
[portland.gov/bps/cleanenergy](http://portland.gov/bps/cleanenergy)

# Virtual Participation Check

## Guidelines for public participation

- Committee meetings open to the public
- Public invited to comment at around 6:05 p.m.
- Public asked to observe and listen
- Opportunities for public engagement in other forums

### ➔ Guidelines applied to virtual meeting:



**Chatbox:** open for introductions and public comment. All other times, host-only chats (PCEF Staff).



**Raise Hand:** used by Committee only.



**Video:** on for Committee only.



**Microphone:** public members muted unless giving public comment or for introductions.



**Recording:** this meeting is being recorded.



**Captioning:** this meeting is being captioned; settings > show subtitles.

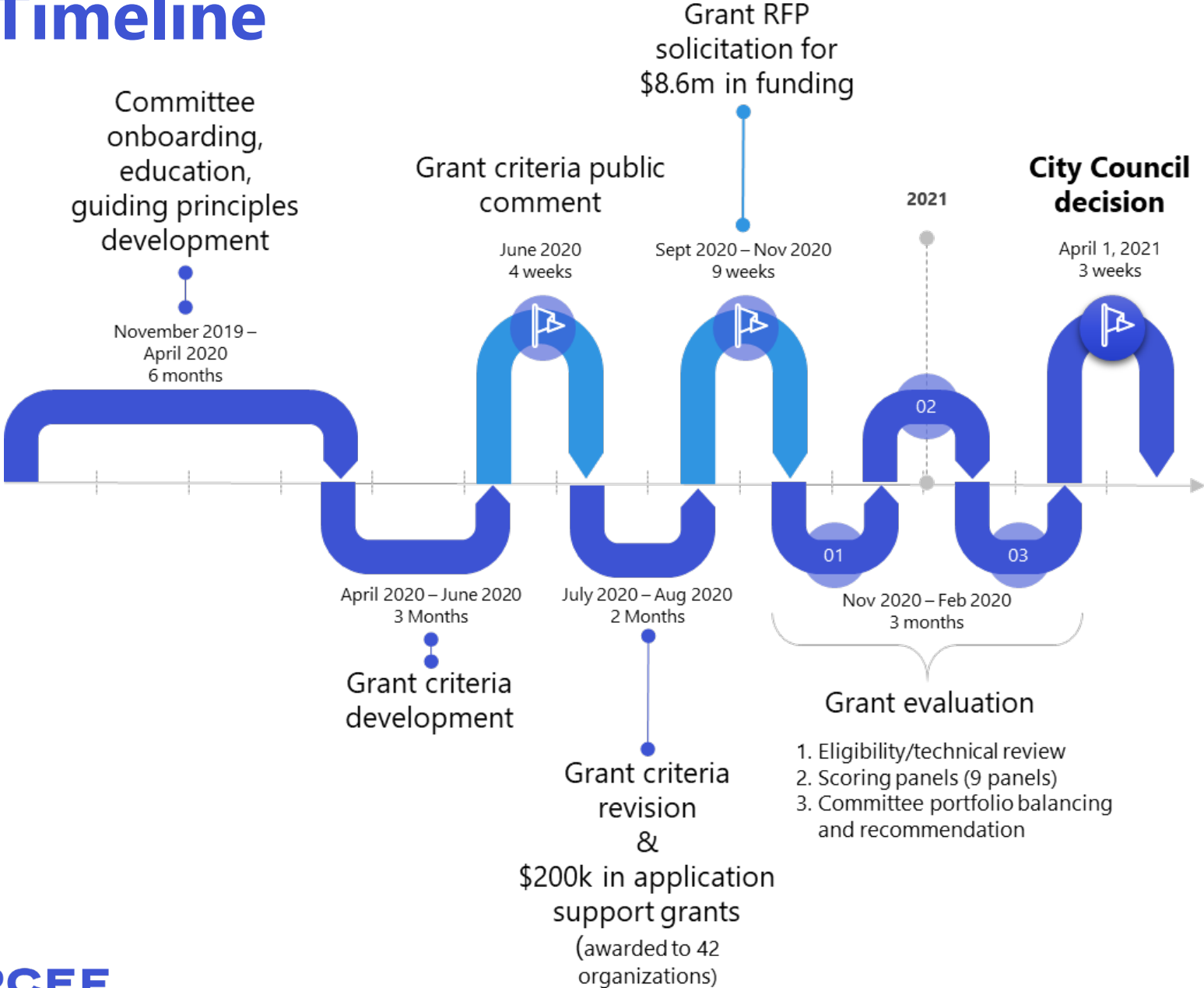
# Introductions

# Public comment

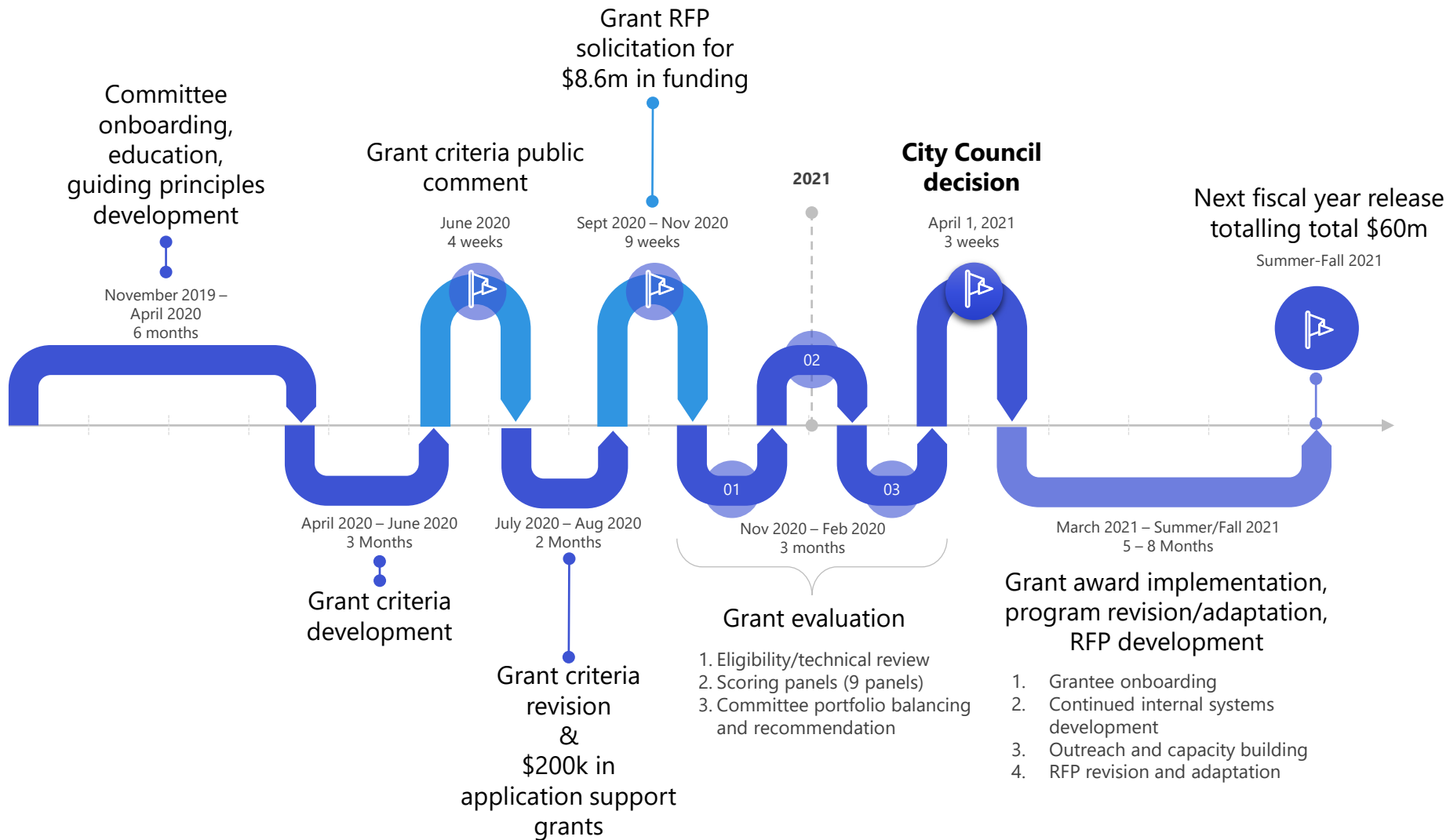
# Agenda

- 6:00 Open
- 6:05 Public comment
- 6:20 Review of application development and grant review process
- 6:50 Overview of applications received
- 7:10 Break
- 7:20 Discussion of grant funding recommendations - portfolio balancing approach and options
- 8:50 Committee member comments
- 9:00 Meeting adjourned

# Timeline



# Timeline



# Guiding Principles



**Focused on climate action with multiple benefits.**

Invest in people, livelihoods, places, and processes that build climate resilience and community wealth, foster healthy communities, and support regenerative systems. Avoid and mitigate displacement, especially resulting from gentrification pressures.



## Community-powered

Trust community knowledge, experience, innovation, and leadership. Honor and build on existing work and partnerships, while supporting capacity building for emerging community groups and diverse coalitions. Engage with and invest in community-driven approaches that foster community power to create meaningful change.



## Justice Driven

Advance systems change that addresses historic and current discrimination. Center all disadvantaged and marginalized groups – particularly Black and Indigenous people



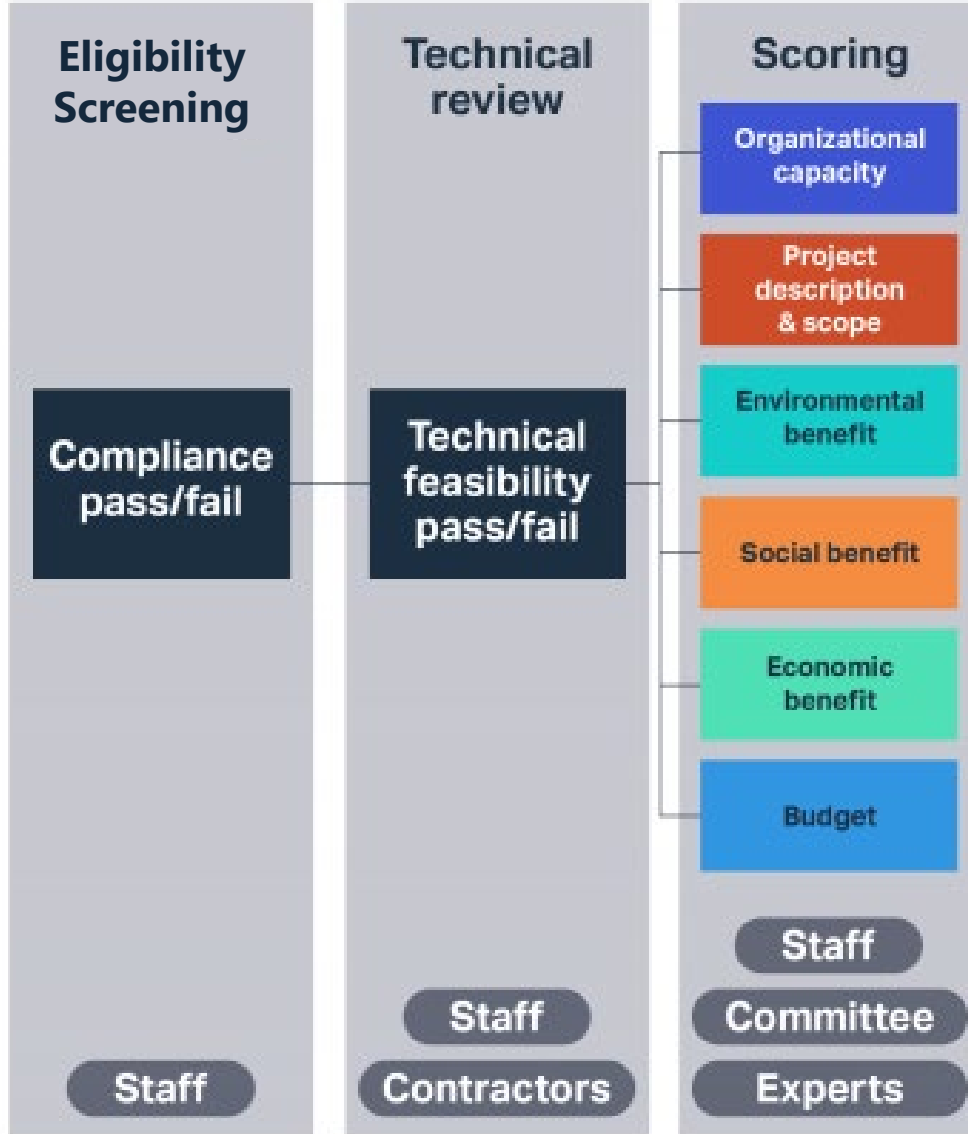
## Accountable

Implement transparent funding, oversight, and engagement processes that promote continuous learning, programmatic checks and balances, and improvement. Demonstrate achievement of equitable social, economic, and environmental benefit. Remain accountable to target beneficiaries, grantees, and all Portlanders.



# Grant review process

# Grant screening and scoring



Nine scoring panels

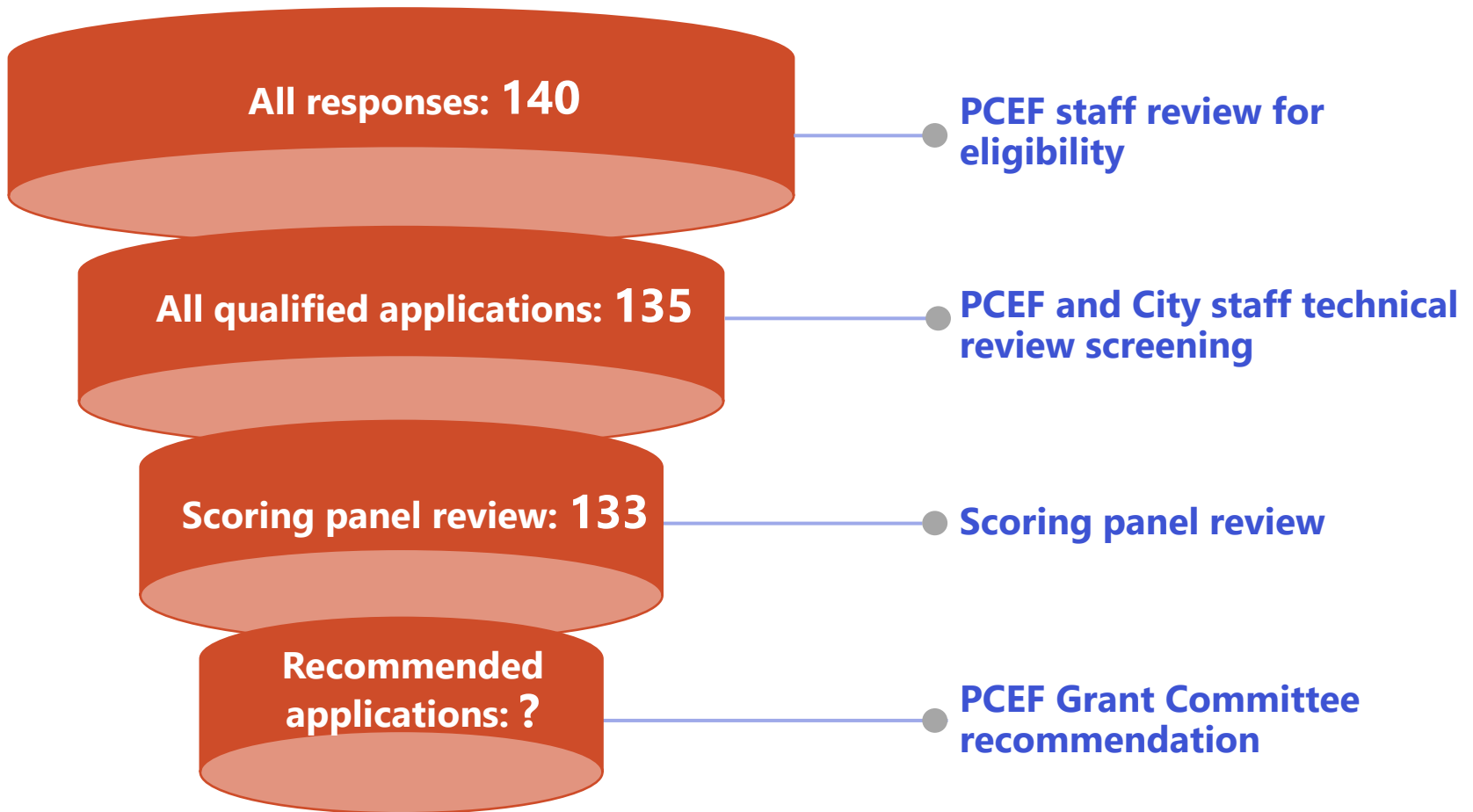
- Three members each
- Committee member on every panel
- BIPOC/non-White identifying majority on every panel
- SME on every panel
- 22 reviewers on 133 applications

Two phase process

1. Independent scoring  
estimated 300+ hours total
2. Scoring panel meetings:
  - three meetings for each scoring panel
  - total 27 scoring panel meetings
  - ~50 hours total

# Applications received

# Overview of applications received

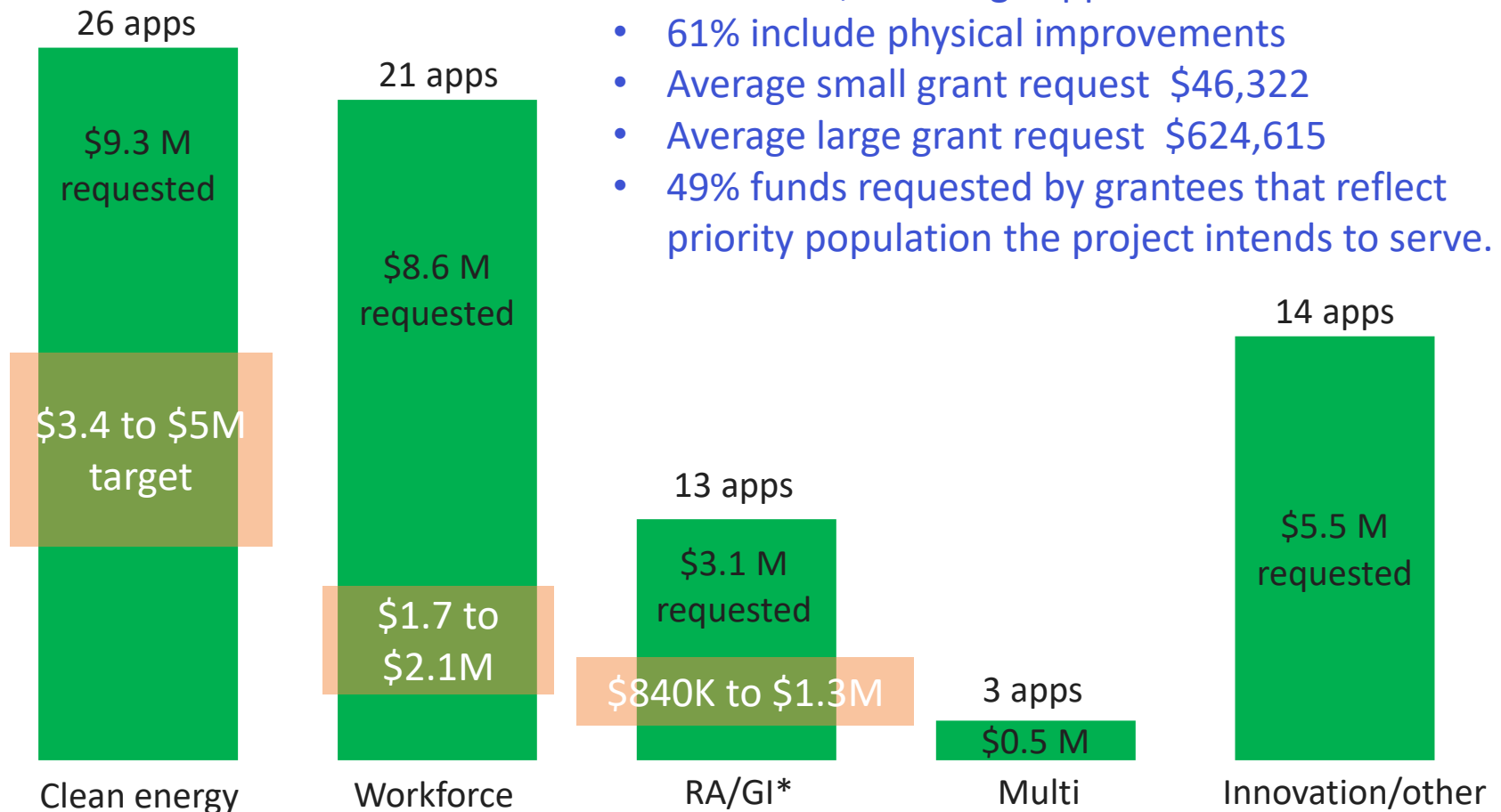


City Council approves grants

# Eligible small and large grant applications for implementation (not planning)

\$27 M requested in 77 small and large grant applications

- 57% small, 43% large applications
- 61% include physical improvements
- Average small grant request \$46,322
- Average large grant request \$624,615
- 49% funds requested by grantees that reflect priority population the project intends to serve.

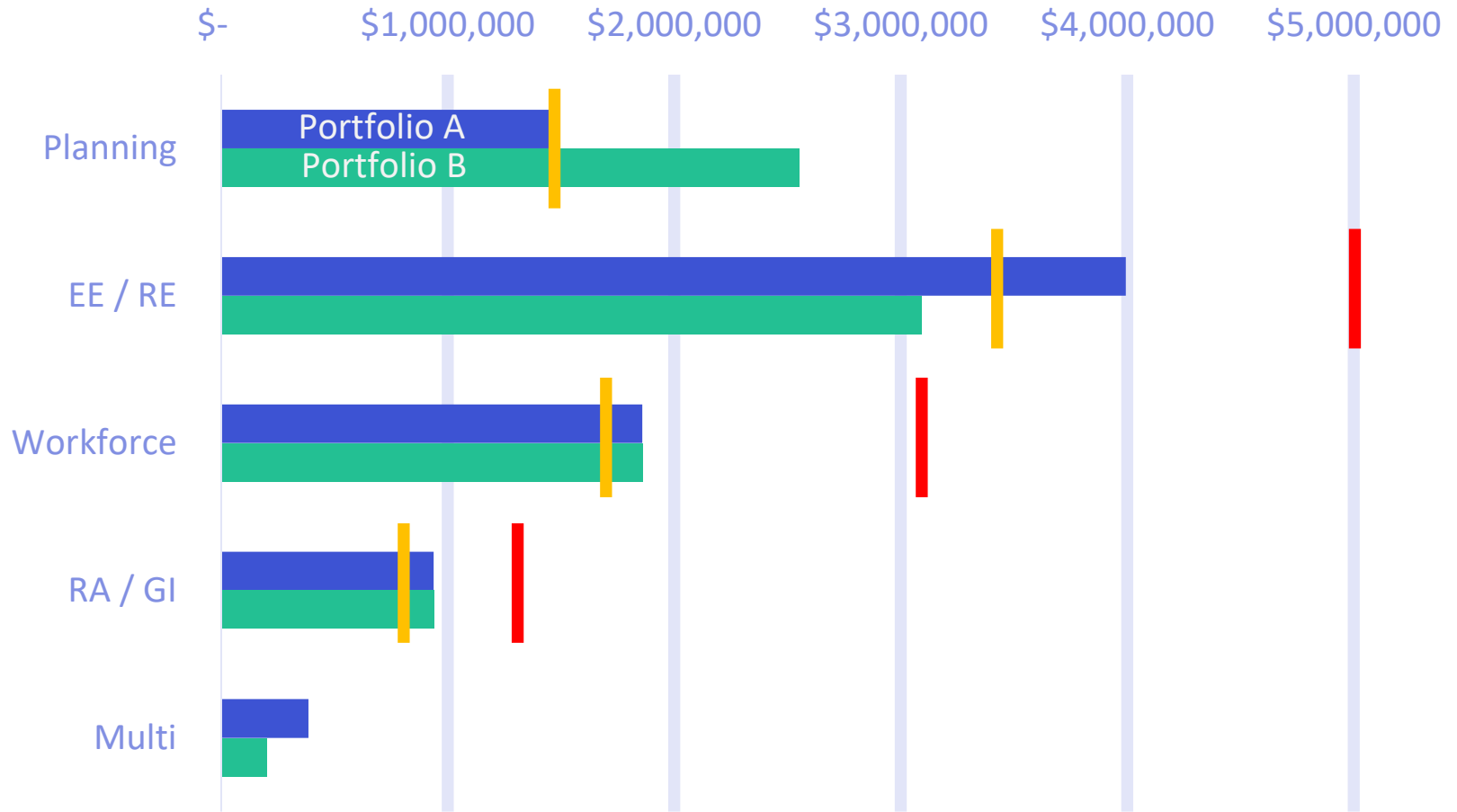


# Portfolio balancing

# Portfolio balancing considerations

- There is no expectation of a decision today
- Applicants that do not get funded will be provided feedback and will have opportunities for capacity building and funding in the near future.
- Are there other characteristics that would help guide your deliberations?
- How does each portfolio align with guiding principles?

# Portfolio Comparison and Thresholds





# Portfolio Option A : \$1.5M for Planning, Midpoint for Most Categories

## Key Portfolio Characteristics:

Total Number of Grants : 36

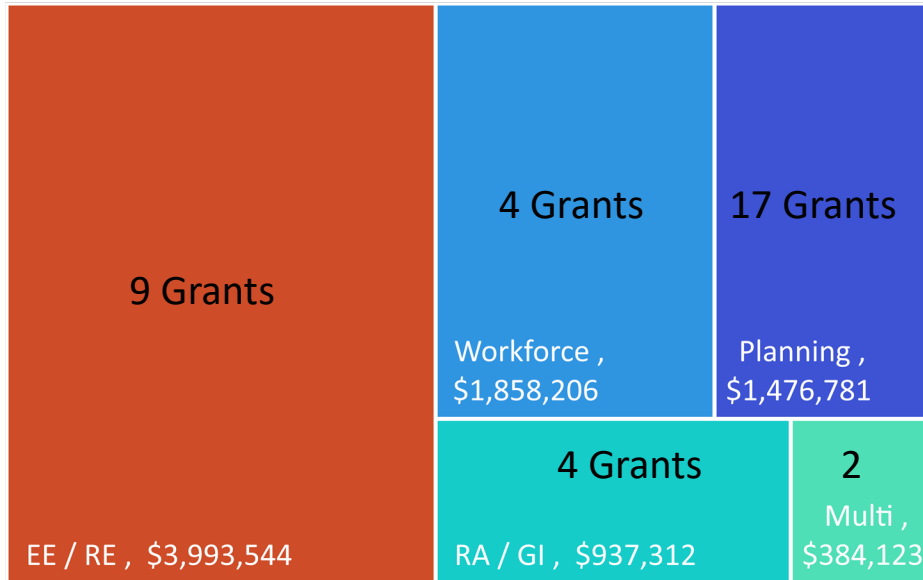
Total lifetime GHG impact: 13,307 tons

Projects\* w/ PI serving E of 82<sup>nd</sup> : 10

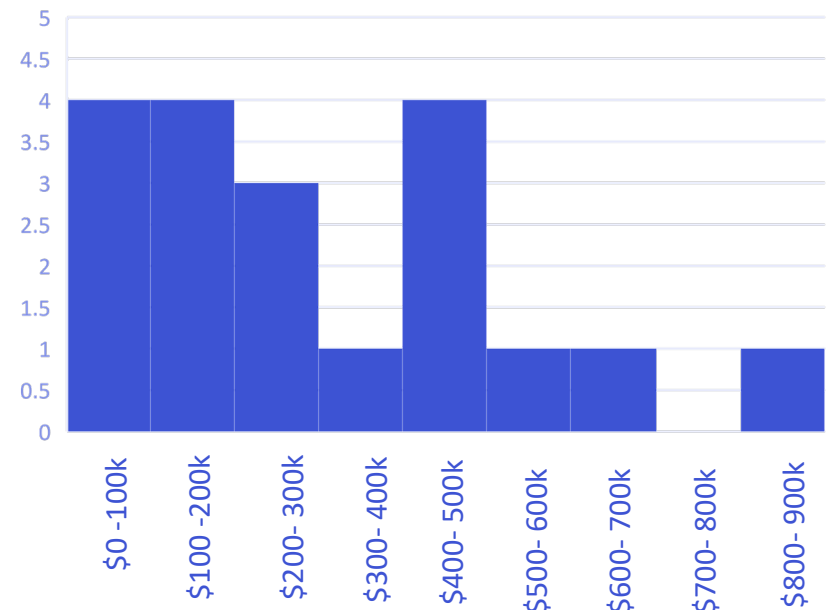
\* All grants that are not Planning grants

Portfolio Scoring Indicators:	# of Projects	% of Total Funding
Applicant Reflects Priority Population	31 of 36 14 of 19*	78%
Small Orgs (< 6 employees)	14 of 36 7 of 19*	37%
Projects* with Physical Improvements (PI)	15 of 19*	61%

Funding Allocation by Category



Number of Project\* Grants by \$ Range



# Portfolio Option B : \$2.5M for Planning

## Key Portfolio Characteristics:

Total Number of Grants : 45

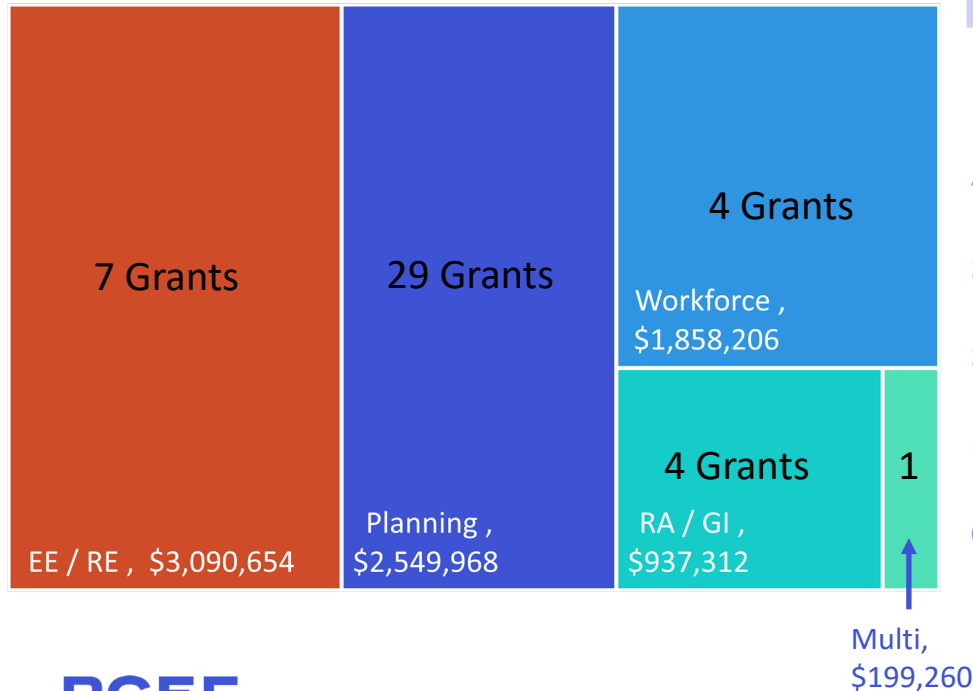
Total lifetime GHG impact: 11,469 tons

Projects\* w/ PI serving E of 82<sup>nd</sup> : 8

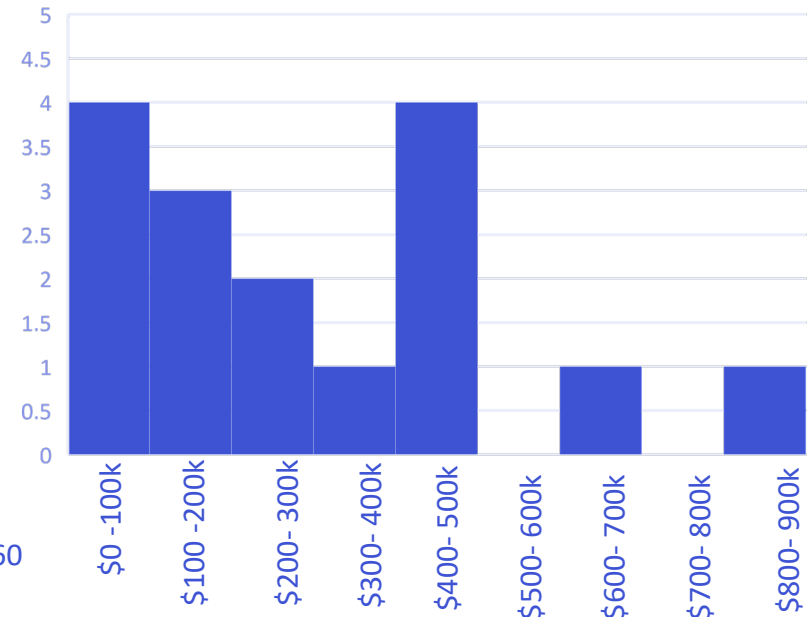
\* All grants that are not Planning grants

Portfolio Scoring Indicators:	# of Projects	% of Total Funding
Applicant Reflects Priority Population	38 of 45 12 of 16*	86%
Small Orgs (< 6 employees)	18 of 45 5 of 16*	38%
Projects* with Physical Improvements (PI)	12 of 16*	49%

Funding Allocation by Category



Number of Project\* Grants by \$ Range



# Using guiding principles

Committee is asked to evaluate portfolios for alignment with guiding principles.

## Example:

### • Portfolio A

- Supports **accountable** with higher calculable greenhouse gas reductions through more clean energy projects
- Supports **climate action with multiple benefits** with 3 more implementation projects that address GHG benefits and reduce energy bills for priority populations.

### • Portfolio B

- Supports **justice driven** by adding 6 planning grantees who reflect the community they serve
- Supports **community-powered** by adding 7 planning grants, which increase capacity building for emerging groups



COMMUNITY IS KEY



# THANK YOU!

PORTLAND  
CLEAN ENERGY  
COMMUNITY BENEFITS  
FUND



Bureau of Planning and Sustainability

VISIT US ONLINE  
[portland.gov/bps/cleanenergy](http://portland.gov/bps/cleanenergy)