



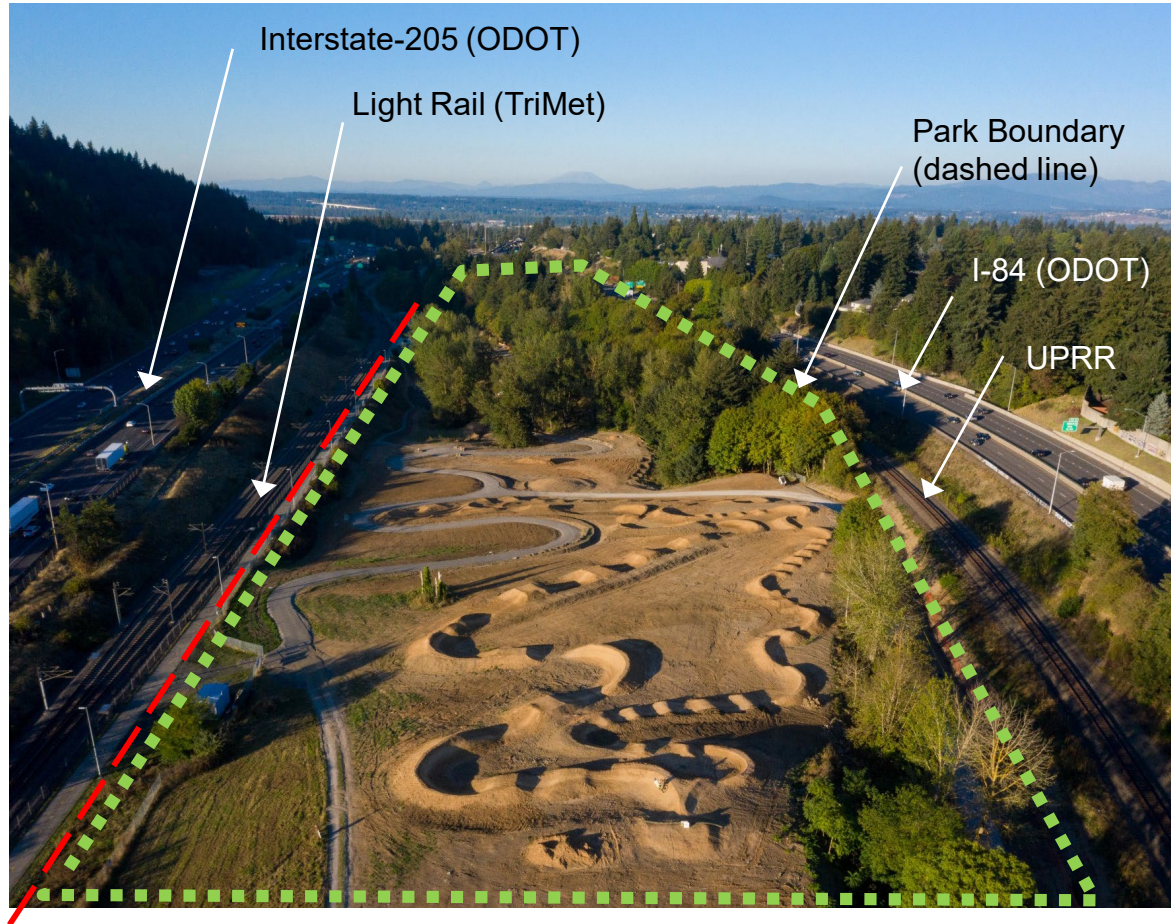
Gateway Green Access Improvements - Raimore Contract Amendment

Ross Swanson, Capital Project Manager III





Gateway Green Site Context



- 24 acres for off-road cycling
- Between 2 freeways, light and heavy rail
- Surrounded by properties owned by other agencies
- Very limited maintenance and emergency access

Project Context





***Amend the Contract with Raimore Construction, Inc. for additional compensation to add contract work for the construction of the Gateway Green Access Road, resulting in a total contract authorization of \$5,600,000 (Ordinance, amend Contract No. 30007104)**

