

# River Plan / South Reach

## TRIBAL AND URBAN NATIVE COMMUNITY ENGAGEMENT



THE RIVER PLAN

### WHAT ARE THE GOALS...

#### Continue to strengthen the relationship between tribal governments and the City of Portland.

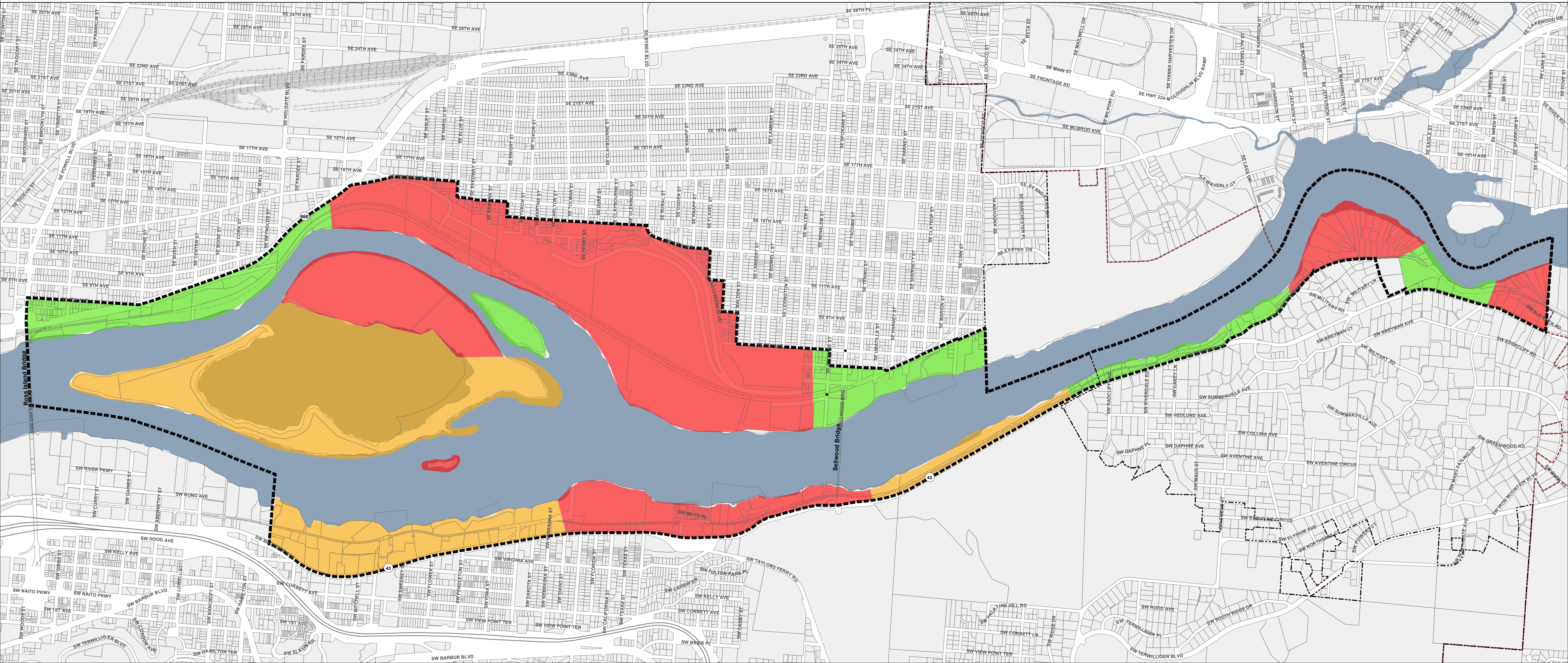
- Update the 2035 Comprehensive Plan to reference tribal nations as governments and to use consistent terminology.

#### Recognize the cultural and historical importance of the South Reach for tribal nations and the urban native community.

- Coordinate with tribal nations and the urban native community to:
  - ◇ Generate ideas, seek funds and implement programs and projects that promote culture and history and educate the public.
  - ◇ Investigate developing a citywide tribal cultural resources first foods harvesting program where tribes historically harvested foods and other resources.
  - ◇ Enhance natural areas to increase viability of culturally important fish, wildlife and native plants.
  - ◇ Determine barriers to, and plan for desired culturally-specific activities and programming in South Reach parks and natural areas.



# River Plan South Reach



## Archaeological Sensitivity Areas

November 1, 2019  
 City of Portland, Oregon // Bureau of Planning & Sustainability // Geographic Information System  
 The information on this map was derived from City of Portland GIS databases. Care was taken in the creation of this map but it is provided "as is". The City of Portland cannot accept any responsibility for error, omissions or positional accuracy.

	River Plan South Reach boundary	<b>Sensitivity</b>
	City Boundary	High
	Urban Service Boundary	Moderate
		Low

**NORTH**

0 500 1,000 1,500 Feet

Bureau of Planning and Sustainability  
 Innovation. Collaboration. Practical Solutions.  
 City of Portland, Oregon

E:\Dropbox (BPS Tech Services)\BPS Tech Services Team Folder\gis\projects\River\_Plan\South\_Reach\Maps\191938\_RPSR\_Archaeological.mxd