

# River Plan / South Reach

## WATERSHED HEALTH AND RESILIENCE



THE RIVER PLAN

### WHAT ARE THE GOALS...

#### Minimize the impact of future development on natural resources and expand options for mitigating new development.

- Establish a minimum river setback of at least 50 feet.
- Apply standards to minimize the effects of site and building design on fish and wildlife, including new standards for bird-safe glazing, riverbank landscaping and exterior lighting.
- Update the River Environmental overlay zone to allow for the creation of mitigation banks.

#### Protect and enhance in-river, riverbank and upland habitat to improve conditions for native species and strengthen habitat corridors to the Willamette River.

- Regulate the removal of all trees greater than 1.5 inches diameter in the river setback and 6 inches diameter elsewhere.
- Add a standard to limit the size of residential docks and locate them away from shallow water habitat.
- Require floodplain development to mitigate to maintain flood capacity and habitat functions.

#### Identify priority areas for future in-river and upland habitat restoration.

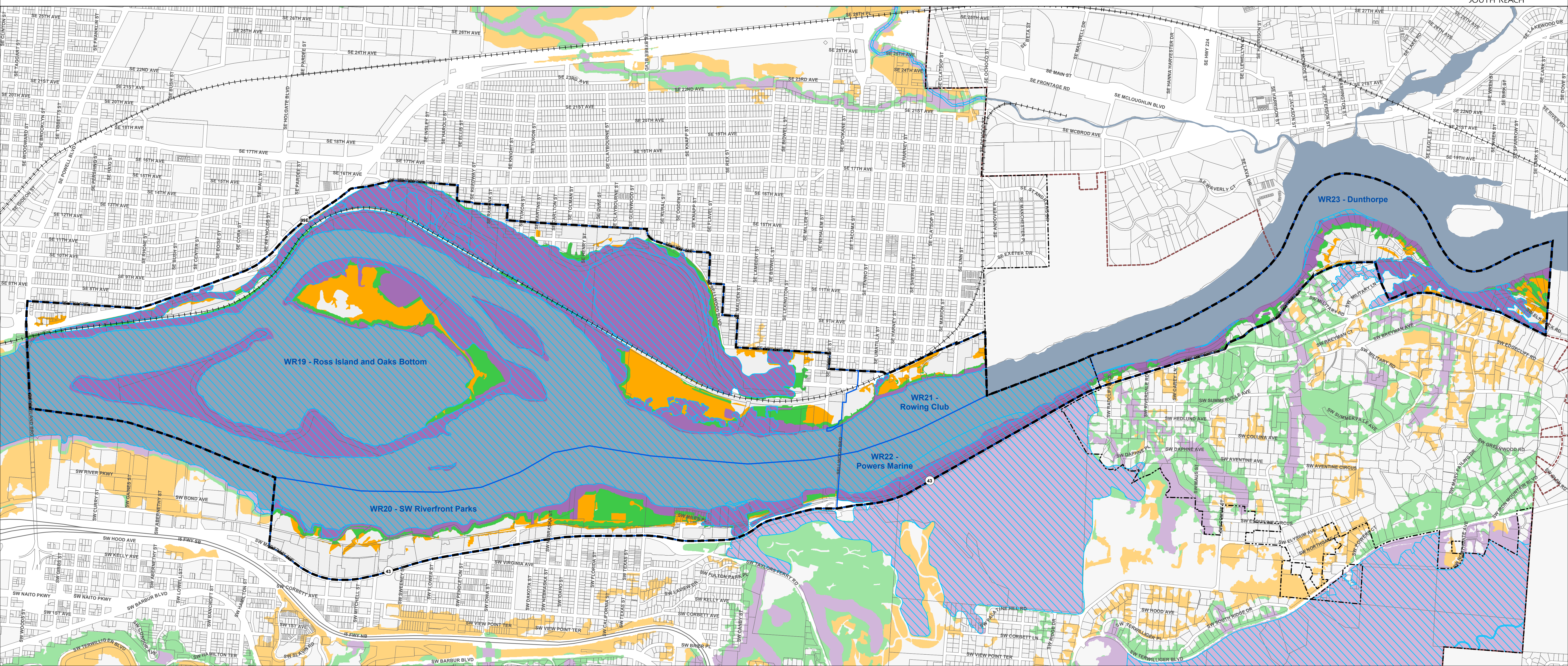
- Target future restoration efforts that expand shallow water habitat, restore tributary streams and strengthen connections to habitat corridors outside the planning area.
- Evaluate strategies to increase shallow water habitat and improve riverbank and upland habitat on private property.
- Continue to evaluate options for minimizing harmful algal blooms in Ross Island Lagoon.

#### Prepare for the effects of climate change by taking steps to reduce the future flood, landslide and wildfire risk to development, parks and natural areas.

- Apply the River Environmental overlay zone to undeveloped and developed floodplains (including the 1996 Flood Inundation Area) to limit development and improve floodplain habitat. Update tree replacement standards to meet FEMA Biological Opinion criteria.
- Require non-river-dependent development in floodplains within 170 feet of the river to improve floodplain habitat function.
- Work with FEMA and/or other organizations to better assess future flood risk.
- Evaluate the current and potential risk of wildfire associated with existing development and develop strategies to reduce future wildfire risk.



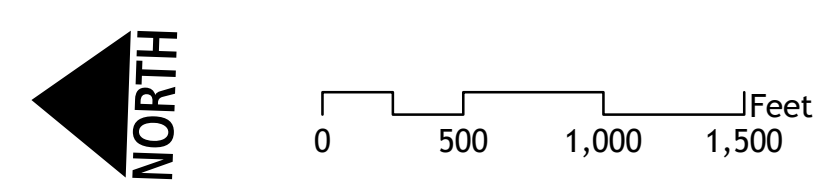
Photo credit: Mike Houck



## Natural Resource Inventory

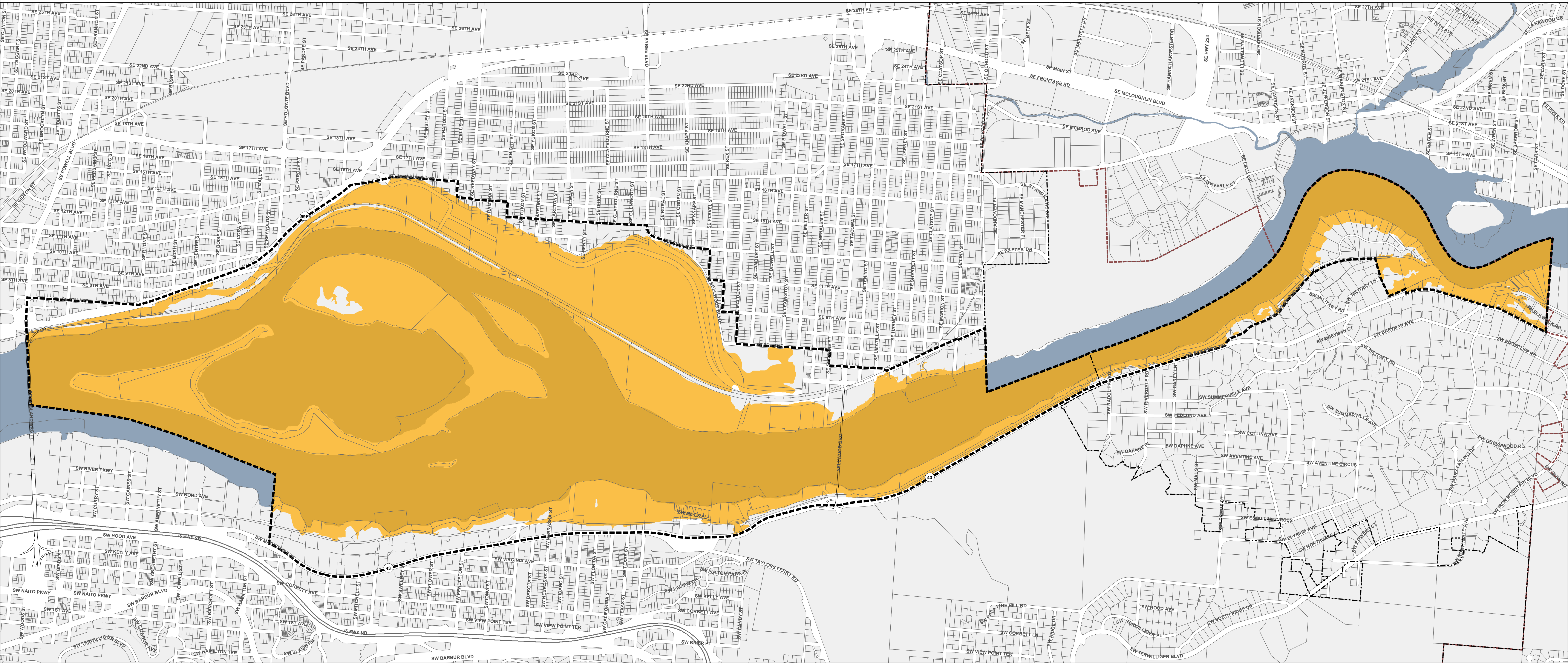
November 1, 2019  
 City of Portland, Oregon // Bureau of Planning & Sustainability // Geographic Information System  
 The information on this map was derived from City of Portland GIS databases. Care was taken in the creation of this map but it is provided "as is". The City of Portland cannot accept any responsibility for error, omissions or positional accuracy.

- River Plan South Reach boundary
- City Boundary
- Urban Service Boundary
- Inventory Site boundary
- River (High value)
- Special Habitat Areas (High Rank)
- Combined Relative Resource Value**
- High Relative Rank
- Medium Relative Rank
- Low Relative Rank



Source: Natural Resources Inventory (NRI),  
 City of Portland, Bureau of Planning and Sustainability, 2019

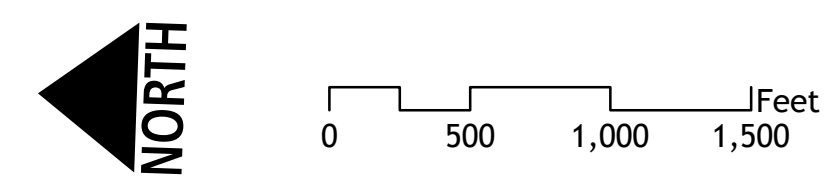




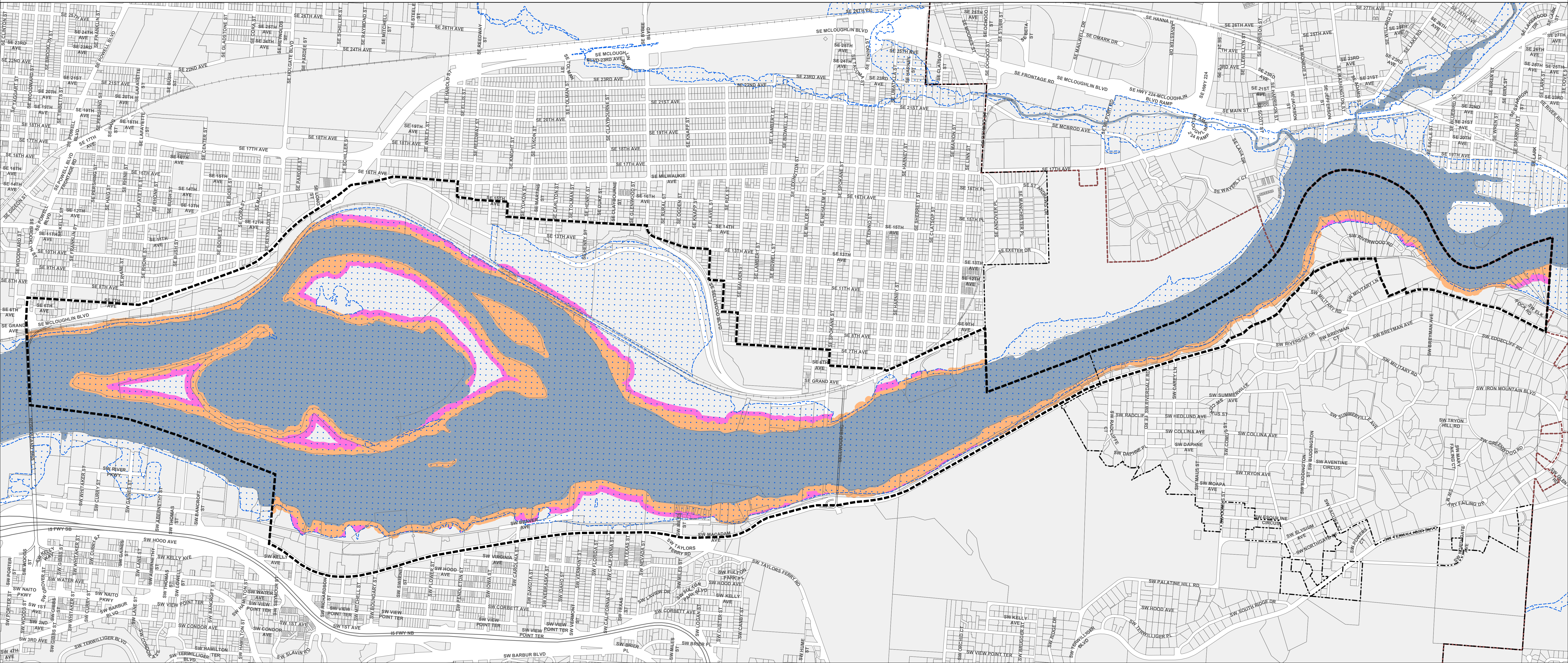
## Draft River Environmental (e) Overlay Zone

November 1, 2019  
 City of Portland, Oregon // Bureau of Planning & Sustainability // Geographic Information System  
 The information on this map was derived from City of Portland GIS databases. Care was taken in the creation of this map but it is provided "as is". The City of Portland cannot accept any responsibility for error, omissions or positional accuracy.

- River Plan South Reach boundary
- Draft River Environmental (e) Overlay Zone
- City Boundary
- Urban Service Boundary
- River










E:\Dropbox (BPS Tech Services)\BPS Tech Services Team Folder\gis\projects\River\_Plan\South\_Reach\Map\191038\_RPSR\_NRI.mxd



## Draft Riparian Buffer Area

November 1, 2019  
City of Portland, Oregon // Bureau of Planning & Sustainability // Geographic Information System  
The information on this map was derived from City of Portland GIS databases. Care was taken in the creation of this map but it is provided "as is". The City of Portland cannot accept any responsibility for error, omissions or positional accuracy.

-  River Plan South Reach boundary
-  Flood Area
-  City Boundary
-  River Setback
-  Urban Service Boundary
-  Draft Riparian Buffer Area beyond River Setback
-  River

