

- Minimize the impact of future development on natural resources and expand options for mitigating new development.
- Protect and enhance in-river, riverbank and upland habitat to improve conditions for native species and strengthen habitat corridors to the Willamette River.

WATERSHED HEALTH & RESILIENCE

- Prepare for the effects of climate change by taking steps to reduce the future flood, landslide and wildfi
- Identify priority areas and support future efforts to restore in-river and upland habitat.



- Identify and protect high quality South Reach views to increase the community's visual connection to and appreciation of the Willamette River and its surroundings.
- Create a diversity of land- and water-based recreational experiences through a variety of facilities and programs.

RECREATION & SCENIC RESOURCES

- Minimize conflicts between recreational uses and activities.
- Ensure safe and seamless pedestrian and bicycle connections to and along the riverfront.



This plan envisions the South Reach of the Willamette River as habitat for fish, wildlife and native plants and people; a safe place to walk, run, swim, paddle, view wildlife, ride and roll; and a destination for riverfront neighborhoods and visitors alike.

- Continue to strengthen the relationship between tribal governments and the City of Portland.

TRIBAL ENGAGEMENT & COLLABORATION

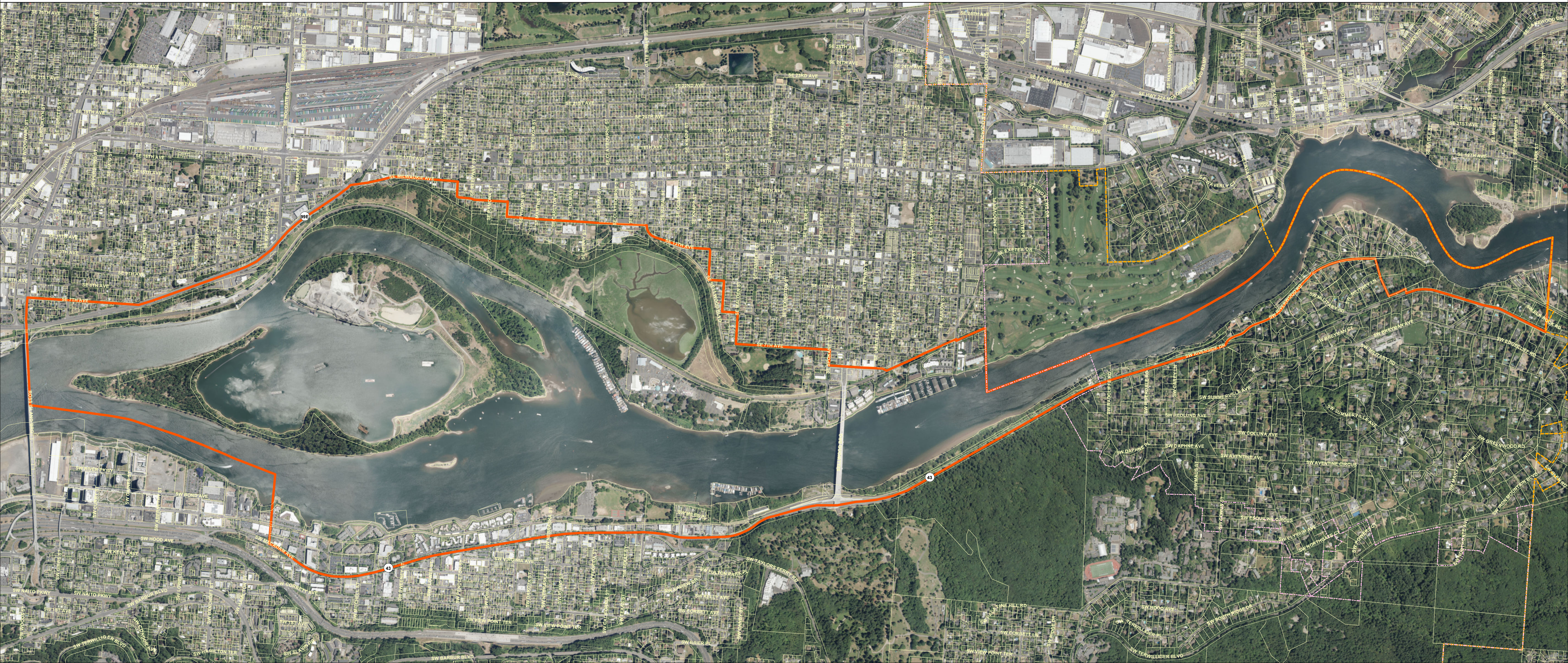
- Recognize the cultural and historical importance of the South Reach for tribal nations and the urban native community.



- Continue the City's compliance with Statewide Planning Goal 15 by protecting, conserving, enhancing and maintaining the natural, scenic, historical, economic and recreational qualities of lands along the river.




RIVERFRONT COMMUNITIES

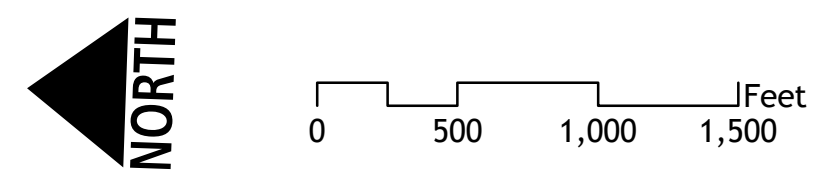
- Develop and implement up-to-date design standards and guidelines for riverfront development.
- Improve the multi-modal transportation system to facilitate safe and convenient access to the riverfront area.



2018 Aerial Photograph

November 1, 2019
 City of Portland, Oregon // Bureau of Planning & Sustainability // Geographic Information System
 The information on this map was derived from City of Portland GIS databases. Care was taken in the creation of this map but it is provided "as is". The City of Portland cannot accept any responsibility for error, omissions or positional accuracy.

-  River Plan South Reach boundary
-  City Boundary
-  Urban Service Boundary



E:\Dropbox (BPS Tech Services)\BPS Tech Services Team Folder\gis\projects\River_Plan_South_Reach\Maps\191938_RPSR_Aerial.mxd