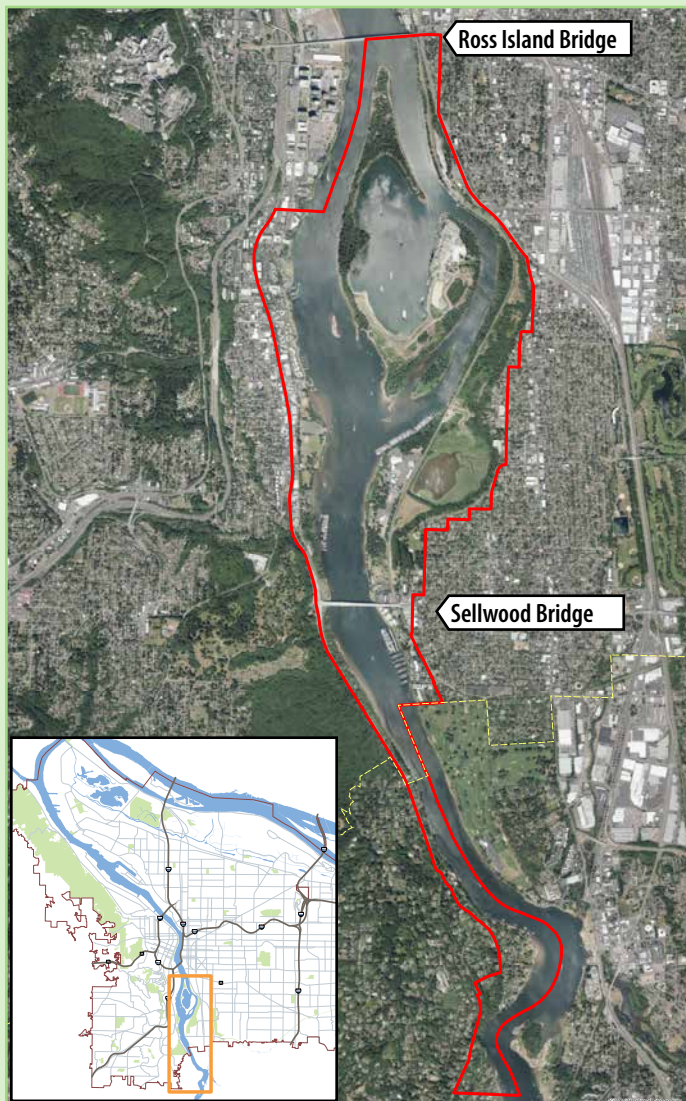
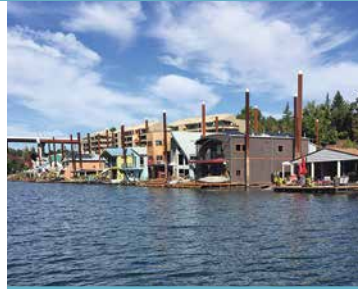


SOUTH REACH PROJECT SUMMARY



The South Reach project boundary, in red above, extends from the Ross Island Bridge down to and including the unincorporated Multnomah County neighborhood of Dunthorpe. The boundary is aligned with SW Macadam Blvd to the west and generally follows the bluff to the east.

The South Reach of the Willamette River is a distinct environmental and recreational asset within the city.

The River Plan / South Reach project will update the Willamette Greenway Plan (1987). It will establish a renewed vision for the area, update existing policies and regulations, identify implementation actions, and prioritize future investments for the South Reach of the Willamette. Specifically, the new plan will include:

- An urban design concept that establishes a long-term vision for the area and identifies natural resources to be protected and restored, activity areas, key access points to and along the river, potential development opportunities and other considerations.
- Visual, historic/cultural and physical connections to and interactions with the river for nearby neighborhoods and the broader community.
- Land- and river-based recreation and viewpoint opportunities and challenges.
- Fish and wildlife habitat, including environmental restoration opportunities.
- Environmental zoning and river setbacks to protect the ecology of the area.
- Floodplain management solutions, including those identified through the FEMA National Flood Insurance Program (NFIP) Biological Opinion (BiOp).
- Elements that recognize, honor, and carry forward the unique cultural history of the area.

The South Reach stands out from other reaches of the Willamette River due to its mix of parks and open spaces, housing types adjacent to and on the river, and commercial uses — all within a short distance from Downtown. The area provides numerous recreational opportunities for communities near and far.



Floating homes and multifamily buildings offer unique housing choices along the South Reach.



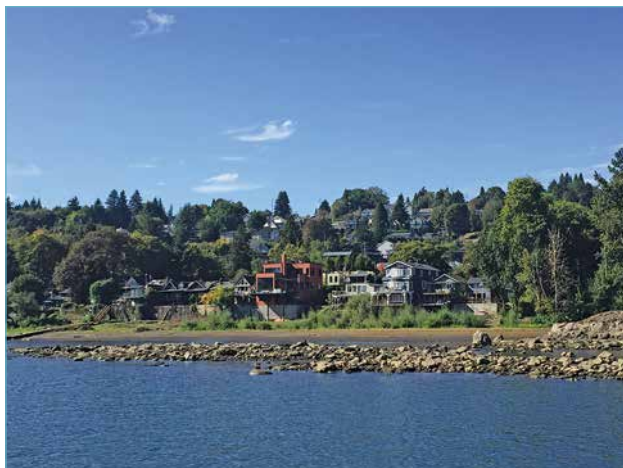
Residents of nearby neighborhoods have easy access to amenities like Oaks Amusement Park.



The Willamette Greenway trail was made for runners, walkers, rollers and strollers of all ages and abilities.

“Enhance the role of the Willamette River South Reach as fish and wildlife habitat, a place to recreate, and as an amenity for riverfront neighborhoods and others”

Comprehensive Plan Policy 3.82



Single-family homes next to the river's edge are common in the South Reach.



Water-based recreation opportunities abound on the South Reach.

Project timeline

PROJECT KICKOFF	PLAN DEVELOPMENT			PLAN REFINEMENT AND ADOPTION	
WINTER–SPRING 2018	★ SUMMER 2018–FALL 2019			WINTER 2019–SPRING 2020	
Existing Conditions Inventory / Analysis	Visioning Urban Design Concept	Intergovernmental Review Draft	Discussion Draft Potential Zoning Code Updates	Proposed Draft Planning and Sustainability Commission Hearings and Recommendations	Recommended Draft City Council Hearings and Final Action
Initial Input		Government Input	Public Input	Formal Public Testimony	

For more information

Visit: www.portlandoregon.gov/bps/riverplan

- Sign up for electronic newsletter, River Plan News
- Join our mailing list

Contact the City of Portland staff

- Debbie Bischoff, Senior Planner, Land Use
debbie.bischoff@portlandoregon.gov | 503-823-6946
- Jeff Caudill, City Planner II, Environmental
jeff.caudill@portlandoregon.gov | 503-823-4572

