

SOUTH REACH PROJECT SUMMARY



The South Reach of the Willamette River is a distinct environmental and recreational asset.

The River Plan / South Reach project will update the Willamette Greenway Plan (1987). The plan will establish a renewed 20-year vision, update existing policies and regulations, identify implementation actions and prioritize future investments. The draft plan includes the following recommendations:

Watershed Health & Resilience

- Apply new River Overlay zones, which include a 50-foot river setback and new bird-safe glazing, exterior lighting and landscaping requirements.
- Update floodplain development regulations to reduce flood risk and expand salmon and steelhead habitat.
- Identify key river and upland restoration opportunities.

Recreation and Scenic Resources

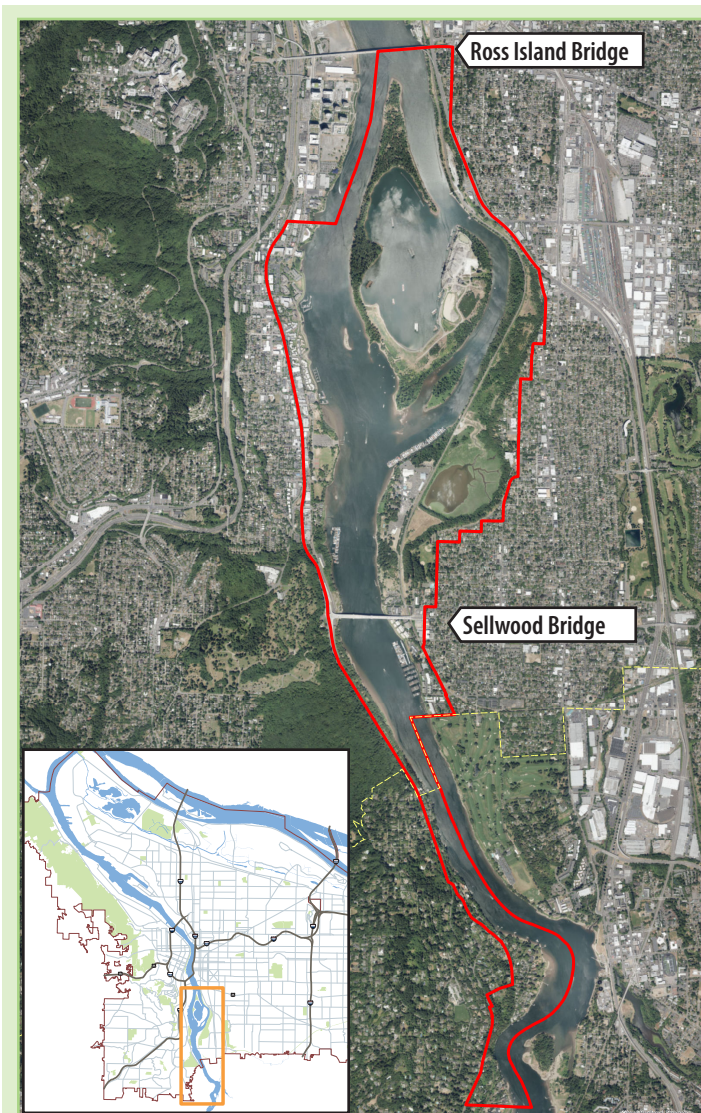
- Increase access to the Willamette Greenway Trail network.
- Support planning of and implementation funding for the Ross Island/Oaks Bottom/Sellwood Riverfront Park complex and the former Staff Jennings site.
- Allow a small amount of river recreation-supportive retail in three South Reach parks.
- Encourage partner agencies to strengthen enforcement and expand boater education and safety programs.
- Designate and protect the unique views of the South Reach.

Tribal and Urban Native Community Engagement

- Work with tribal governments and community members to identify indigenous culturally-significant locations, natural resources and practices to honor and support tribal customs and traditions.

Riverfront Communities

- Ensure all nearby neighborhoods have safe and convenient access to the riverfront.
- Improve coordination and services to houseless communities, while reducing impacts on natural resources.



The South Reach project boundary, in red above, extends from the Ross Island Bridge down to and including the unincorporated Multnomah County neighborhood of Dunthorpe. The boundary is aligned with SW Macadam Blvd to the west and generally follows the bluff to the east.

The South Reach has a unique mix of parks and natural areas, housing types adjacent to and on the river and commercial uses — all a short distance from Downtown.



Floating homes and multifamily buildings offer unique housing choices along the South Reach.



Residents of nearby neighborhoods have easy access to amenities like Oaks Amusement Park.



The Willamette Greenway trail was made for runners, walkers, rollers and strollers of all ages and abilities.

“Enhance the role of the Willamette River South Reach as fish and wildlife habitat, a place to recreate, and as an amenity for riverfront neighborhoods and others”

Comprehensive Plan Policy 3.81

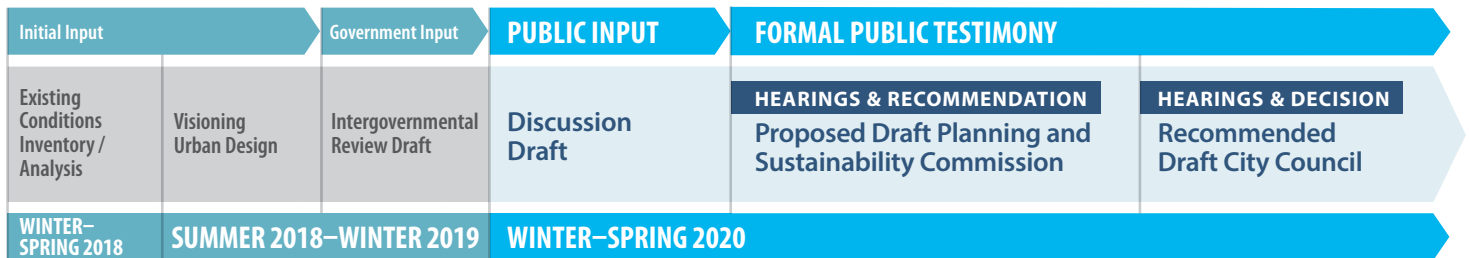


Single-family homes next to the river's edge are common in the South Reach.



Water-based recreation opportunities abound in the South Reach.

Project timeline



For more information

Visit: www.portland.gov/south-reach

- Sign up for electronic newsletter, River Plan News
- Join our mailing list

Contact the City of Portland staff

- Debbie Bischoff, Senior Planner, Land Use
debbie.bischoff@portlandoregon.gov | 503-823-6946
- Jeff Caudill, City Planner II, Environmental
jeff.caudill@portlandoregon.gov | 503-823-4572

