



# River Plan/South Reach PSC Hearing February 25, 2020



Bureau of Planning and Sustainability  
Innovation. Collaboration. Practical Solutions.





*Photo by Mike Houck*



Bureau of Planning and Sustainability  
Innovation. Collaboration. Practical Solutions.



# Policy Guidance

## State Planning Goal 15, Willamette River Greenway

“To protect, conserve, enhance and maintain the natural, scenic, historical, agricultural, economic, and recreational qualities of lands along the Willamette River as the Willamette River Greenway.”

## 2035 Comprehensive Plan

Policy 3.81 “Enhance the role of the Willamette River South Reach as fish and wildlife habitat, a place to recreate, and as an amenity for riverfront neighborhoods and others.”

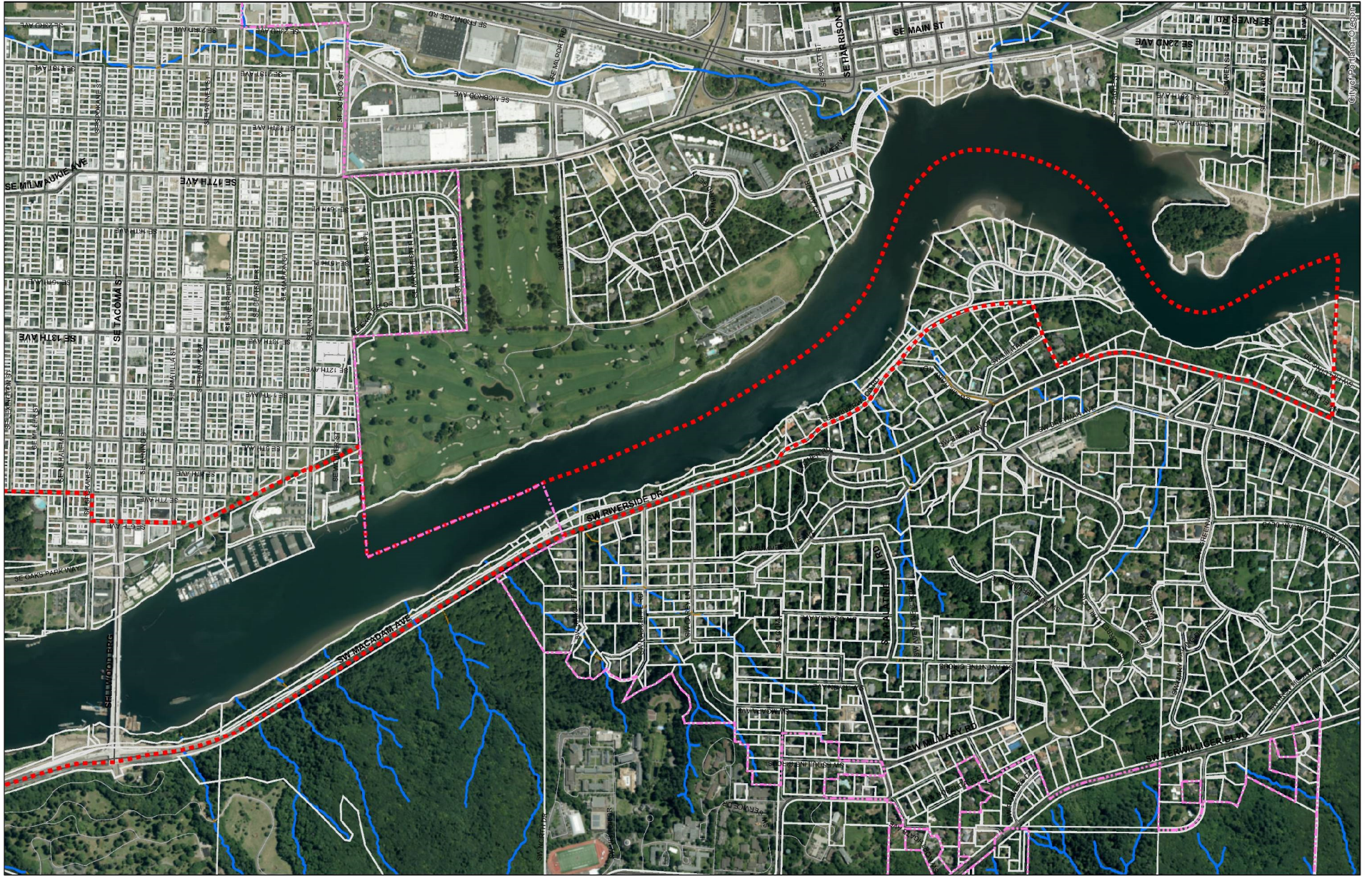


# Update to the *Willamette Greenway Plan*

- Vision
- Policy framework
- Updated map and zoning regulations
- Implementation actions
- Natural and scenic resources protection plans







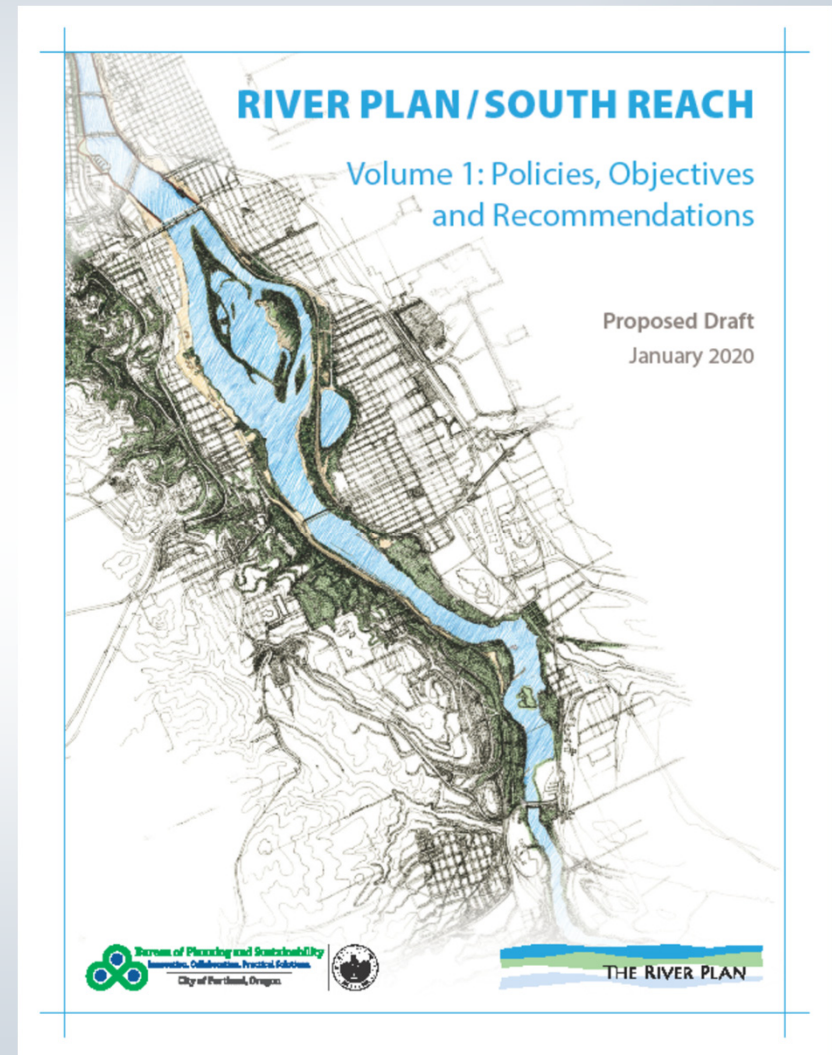
# Planning Process

- Existing conditions
- Public outreach and engagement
- Intergovernmental Review Draft - Summer 2019
- Public Discussion Draft -Fall 2019
- Proposed Draft - Winter/Spring 2020
- Recommended Draft - Summer 2020



# Proposed Draft

- Volume 1: Policies, Objectives and Recommendations
- Volume 2: Scenic Resources Protection Plan
- Volume 3: Natural Resources Protection Plan





# Outreach and Engagement

- Stakeholders
- Inter-bureau team
- Events, tours and meetings
- Tribes and urban Native community
- Intergovernmental Review and Discussion Draft comments



# Key Topics

- Watershed Health and Resilience
- Recreation
- Tribal Engagement and Collaboration
- Riverfront Communities



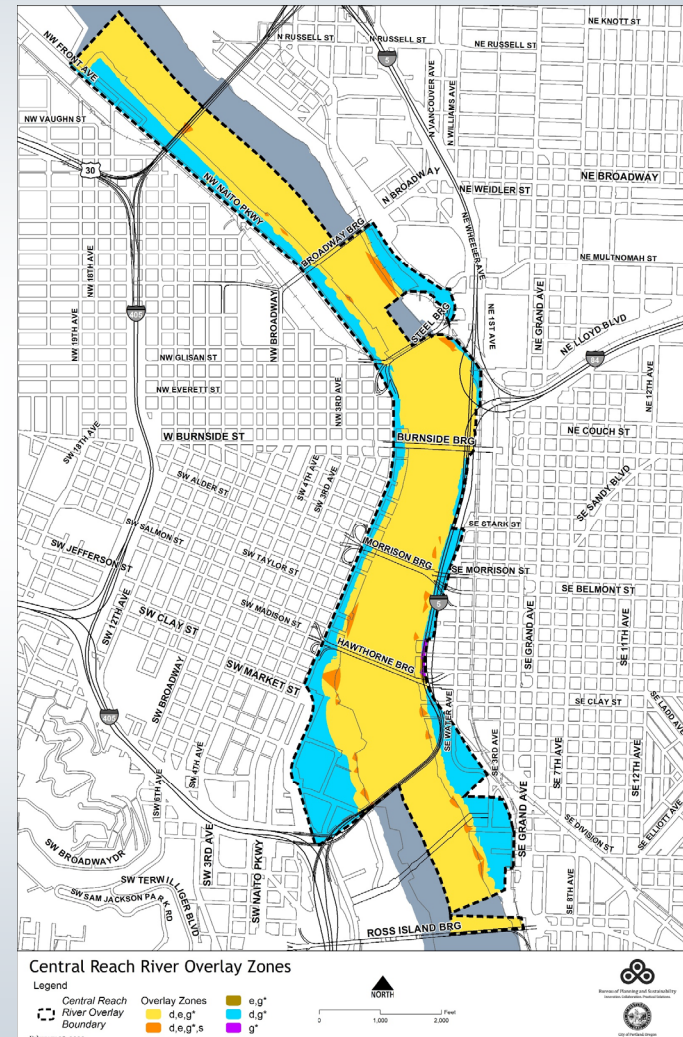
# Minor Zoning Code Updates in Central City

## River Overlay Zones

- Streamlined landscaping standard
- Tree removal exemptions and replacement ratio
- Seawall reinforcement

## Scenic Resources

- Central City viewpoints mapped
- Scenic overlay extended to connect to mapped viewpoints



# Staff Proposed Minor Amendments

A few minor corrections will be provided at 3/10 PSC meeting:

- Add Washington Governor's Office of Indian Affairs as an entity to contact if archaeological resources are found
- Clarify status of FEMA Biological Opinion in code commentary



# Next Steps

- PSC work sessions - 3/10 and 4/14 (with decision)
- Design Commission public hearing on Macadam design recommendations - spring, TBD
- City Council hearing and work sessions - summer, TBD



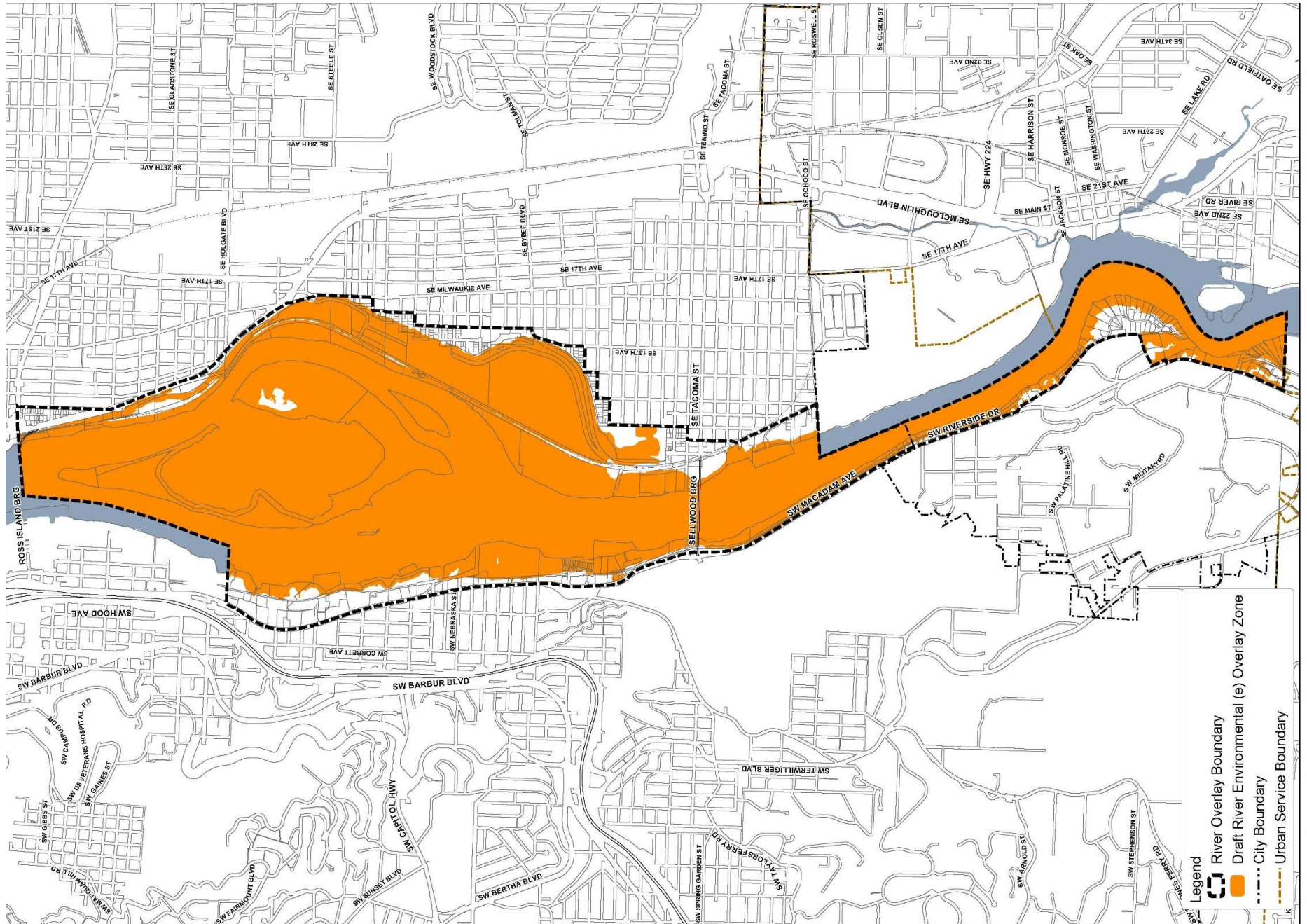
# Thank you!



Bureau of Planning and Sustainability  
Innovation. Collaboration. Practical Solutions.



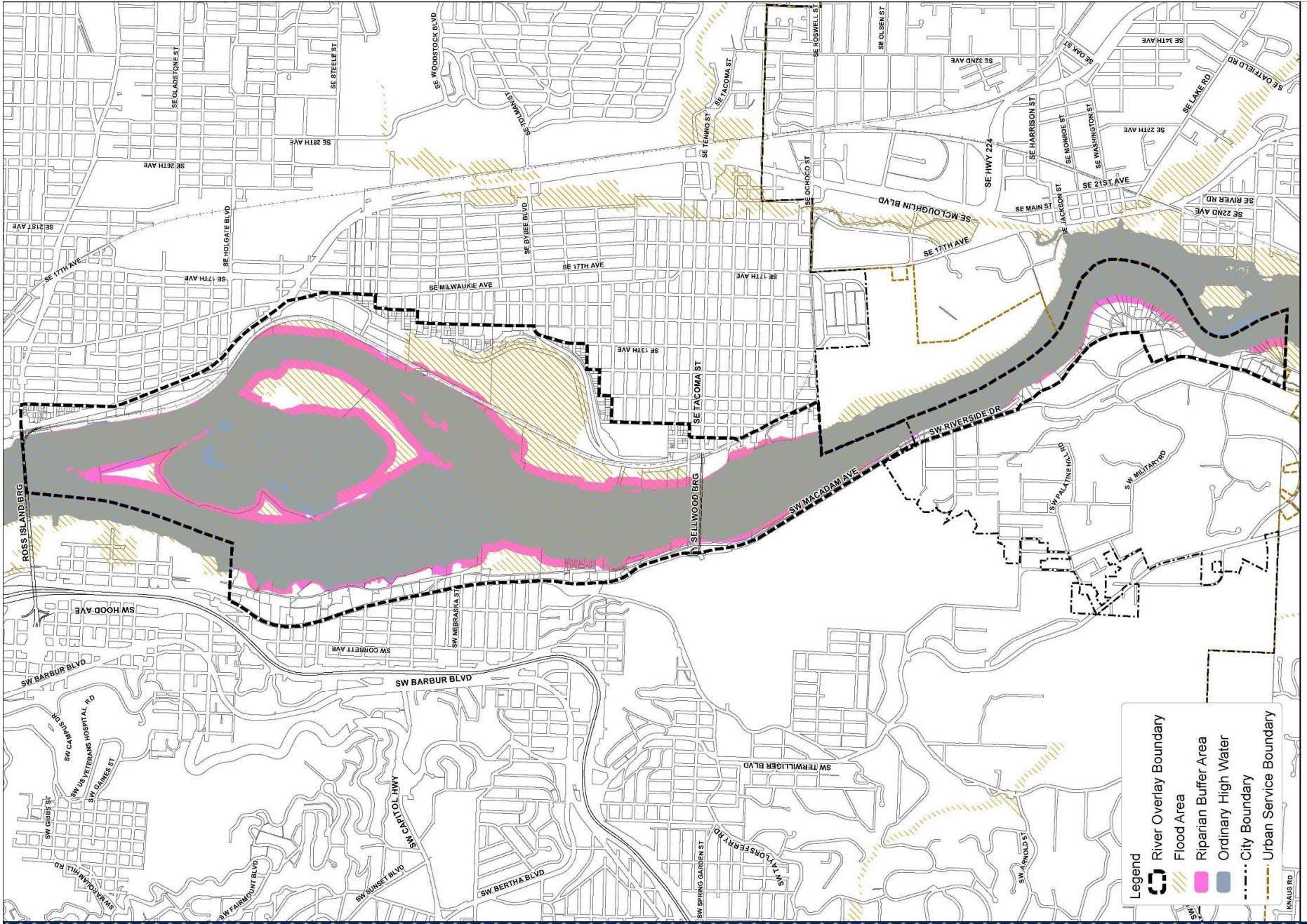




Draft River Environmental Overlay Zone - South Reach



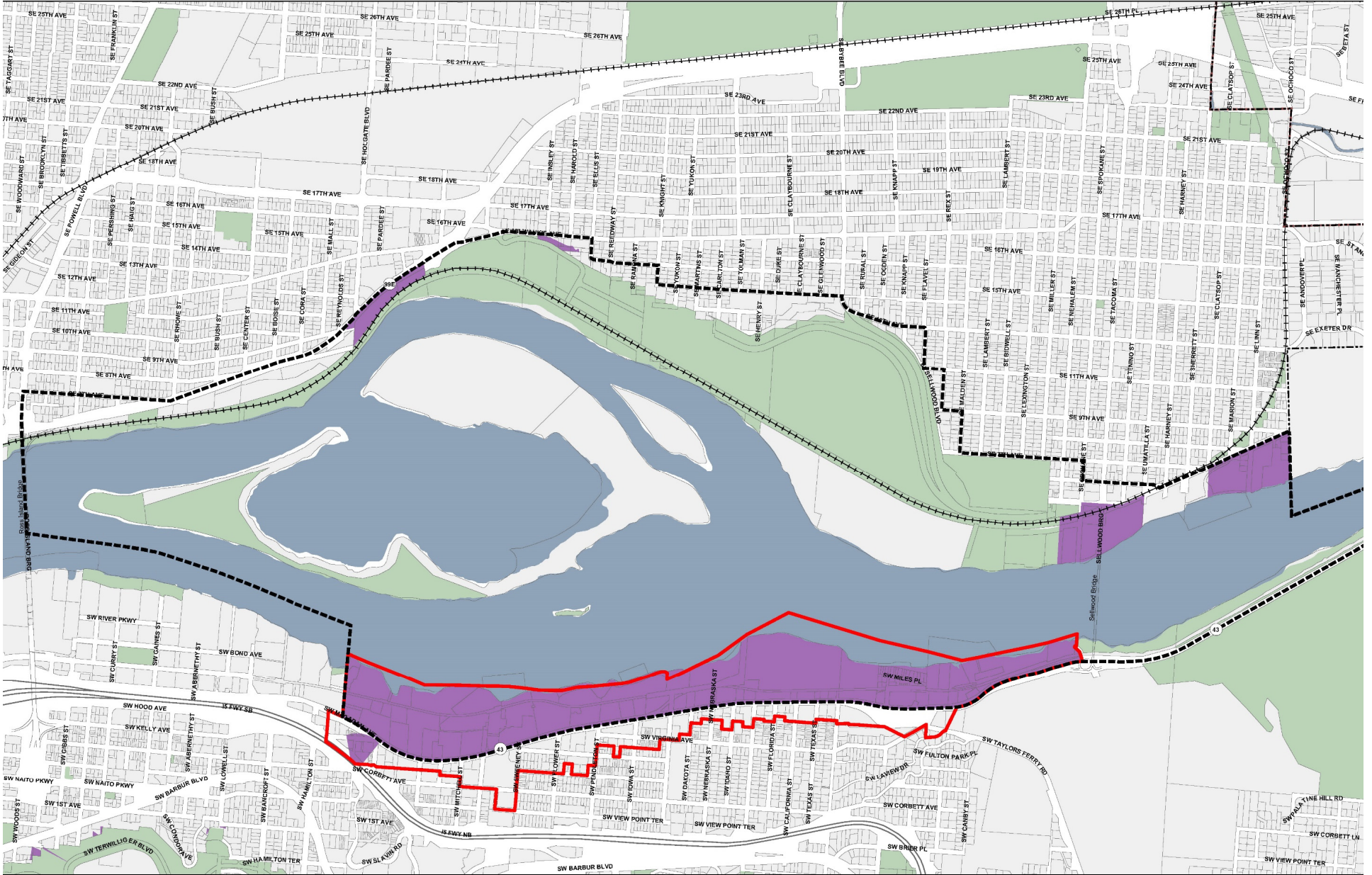




Draft Riparian Buffer Area - South Reach



# River Plan South Reach



## Design Overlay

November 1, 2019

City of Portland, Oregon // Bureau of Planning & Sustainability // Geographic Information System

The information on this map was derived from City of Portland GIS databases. Care was taken in the creation of this map but it is provided "as is". The City of Portland cannot accept any responsibility for error, omissions or positional accuracy.

© 2019 Oregon State University. All rights reserved. Oregon State University. All rights reserved. Oregon State University. All rights reserved.

- River Plan South Reach boundary
- Macadam Plan District
- Design (d) overlay
- City Boundary
- Urban Service Boundary
- Parks

