



## Portland Planning Sustainability Comm

E

P

Rachael  
Patrick Sweet  
Megan Neill, Multnomah  
Steve Dra

Department of Commu  
Transporta

Aug

# Project Overview

## Purpose and Need



**Seismic Resiliency and Emergency Respo**



**Regional Recovery and Rebuilding**




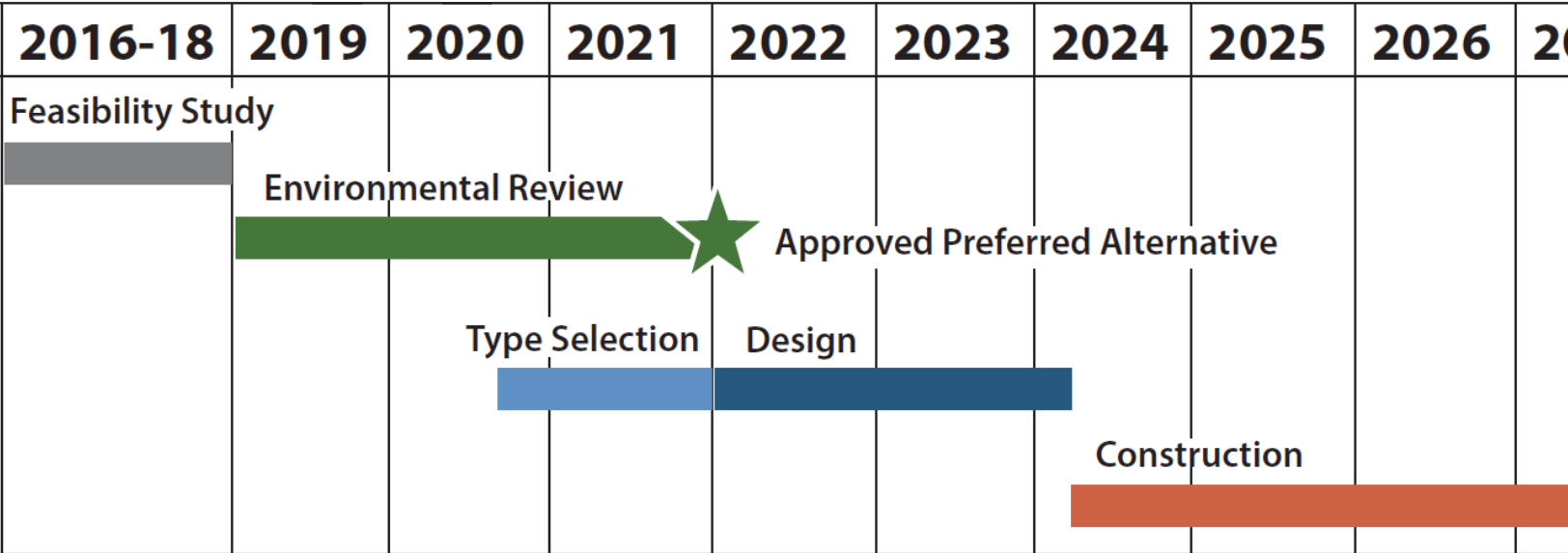
**Long-term Use**



# Project Timeline

Sept. 2019 Briefed  
Portland Planning and  
Sustainability Commission

 **We are here**

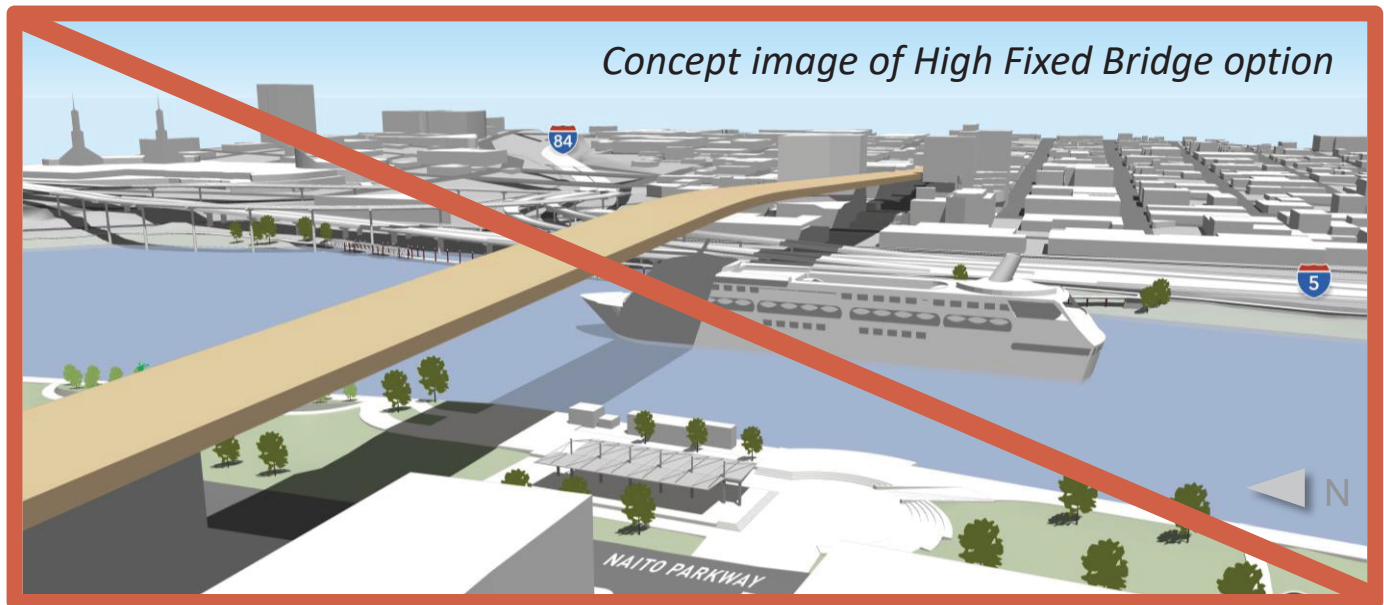


## Funding

- Multnomah County Vehicle Registration Fee
- Metro Transportation Bond – Get Moving 2020



# Since we last met...



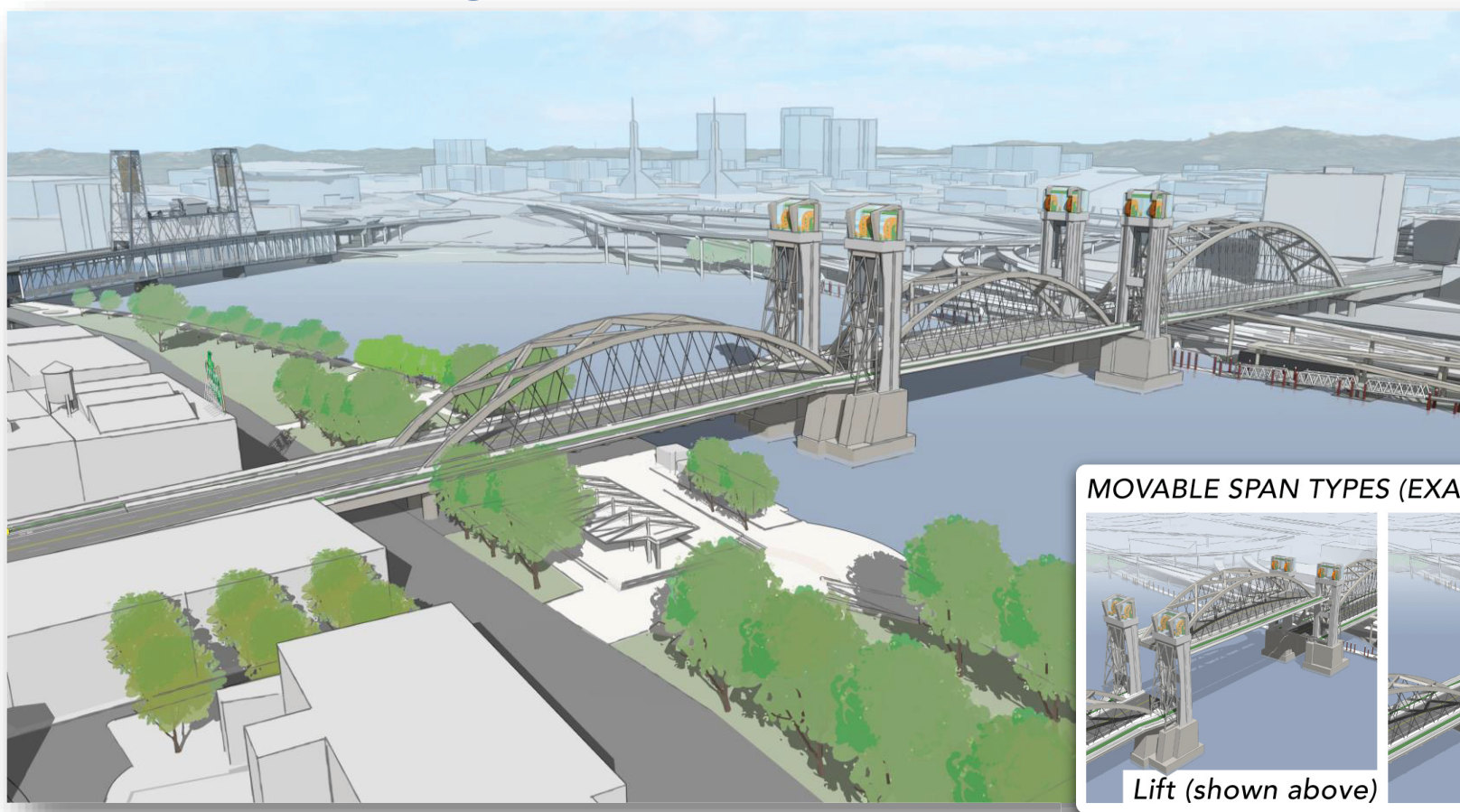
- Policy Group dismissed the High Fixed Bridge option from further study
- Four alternatives are being studied in the Draft Environmental Impact Statement
- Community Task Force has recommended a Preferred Alternative



# Community Task Force Recommendation

## Preferred Alternative

### Replacement Long Span

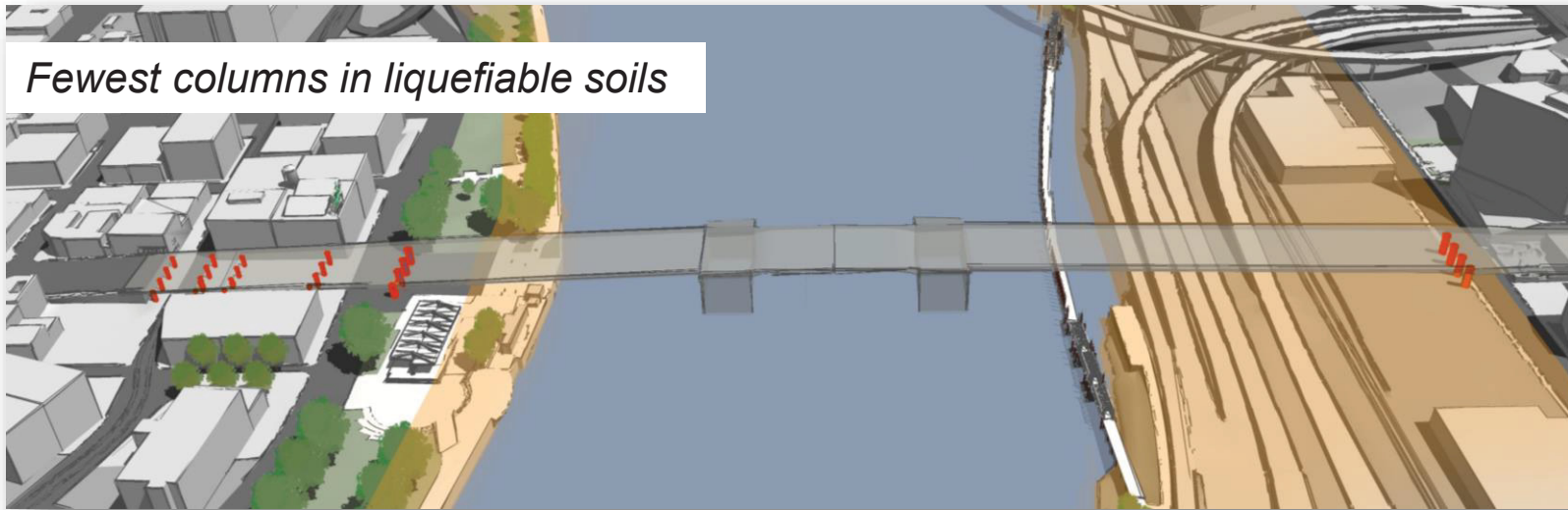


*The example image above is just one variation of what a long span bridge could look like.*



# CTF Recommendation – What We Heard

## Preferred Alternative: Replacement Long Span



### BENEFITS

- Best for seismic resiliency
- Least cost alternative
- Enhances/preserves community resources
- Improves safety for bike/ped/ADA
- Least impacts to natural resources

### IMPACTS

- Removes historic Burnside Bridge

### CONSIDERATIONS

- Views



# CTF Recommendation

## Preferred Alternative

### Traffic During Construction: Full Bridge Closure



#### What we heard:

- **Least cost** - the temporary bridge would add \$90 million to the project
- **Shortest construction duration** (the temporary bridge would add 1.5 construction duration, extending duration of impacts to surrounding area parks, residents, recreational activities and transportation)
- Least in-water construction which **reduces impact to natural resources**



# Summer Outreach

- Online Open House
- Briefings
- Virtual Tours and Animations
- Diverse Outreach (Community Engagement Liaisons Program)





# Engagement and Coordination

Over **100** briefings with community groups

## Community Groups

- Social Services
- Neighborhood and Business Associations
- Transportation Groups
- Urban Design
- Adjacent Neighbors
- River Users
- Contracting Community
- City Committees

## Agency Coordination

- City Bureaus
- Regional, State and Federal

## Project Committee

- 16 Community Task
- 8 Senior Agency Sta
- 3 Policy Group



# Engagement and Coordination

## Diversity, Equity and Inclusion (DEI)

- Project DEI Plan
- DEI Working Group
- Social Services Working Group
- Community Engagement Liaisons Program
- Other diverse engagement:
  - MultCo ACHIEVE Program
  - Asian Pacific American Network
  - Coalition of Communities of Color
  - Vancouver Baptist Church
  - Voz
  - Native American Youth and Family Center
  - Native American Rehabilitation Center
  - Immigrant and Refugee Community



# Ongoing Planning



## SUSTAINABILITY

- *Resiliency planning and coordination*
- *Greenroads*
- *Climate Change*



## COMMUNITY HEALTH

- *Multi-Modal Transportation*
- *Health Impact Assessment*
- *Waterfront Park and Eastbank Esplanade*

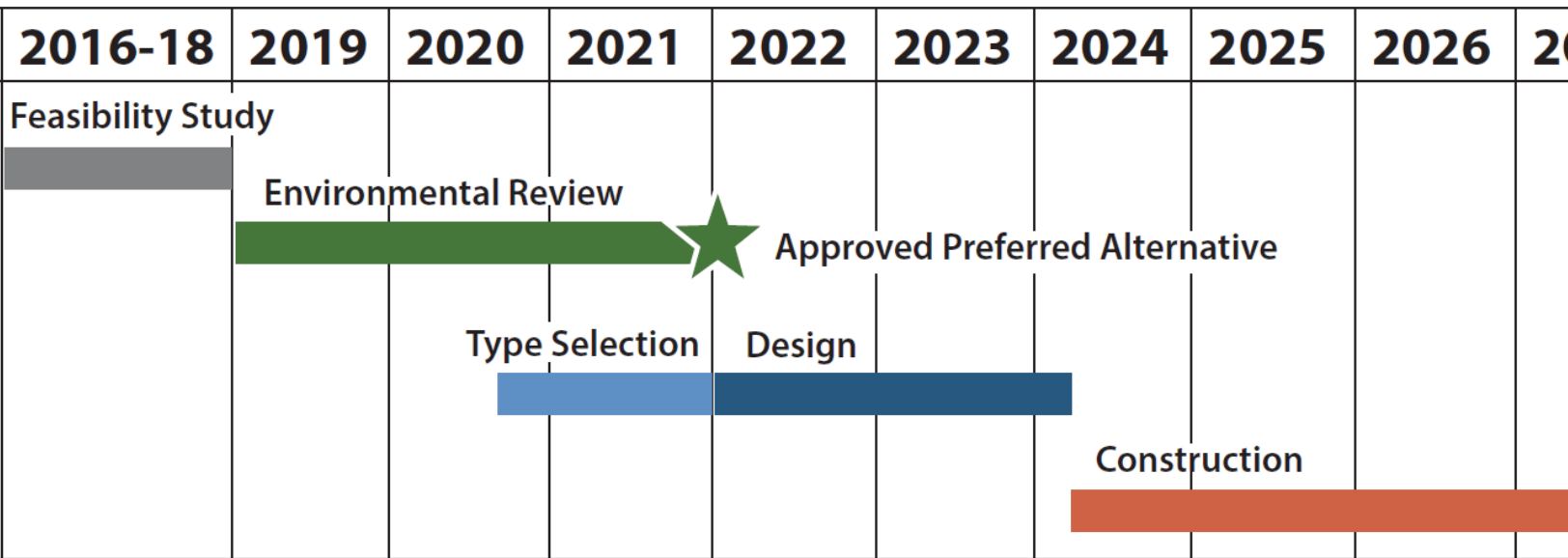


## COORDINATION

- *Utility*
- *Mitigation*
- *Permitting*
- *Incorporating other City plans*



# Next Steps



- August 2020 – Community input on recommended Preferred Alternative
- October 2020 – Policy Group approval of recommended Preferred Alternative
- October 2020 – Kickoff Type Selection phase
- January/February 2021 – Publish Draft Environmental Impact Statement  
*.... when we'll be back to get your input!*



# Questions?

