

# ENVIRONMENTAL OVERLAY ZONE MAP CORRECTION PROJECT



**VOLUME 1, PART A:**  
Project Report,  
Summary of Results



**PROPOSED DRAFT**  
June 2020



# How to Testify

You may submit comments to the Portland Planning and Sustainability Commission on the Proposed Draft Environmental Overlay Zone Map Correction Project in the following ways:

## Use the Map App:

Go to [www.portlandmaps.com/bps/mapapp](http://www.portlandmaps.com/bps/mapapp)

Click on “Ezone Project” and then click the “Testify” button.

## By U.S. Mail

Planning and Sustainability Commission  
Ezone Map Correction Project Testimony  
1900 SW 4<sup>th</sup> Avenue, Suite 7100  
Portland, Oregon 97201

## In person at the public hearings

The hearing, on July 28, 2020 will be held virtually. The meeting starts at 4 p.m. Please check the PSC calendar at <https://beta.portland.gov/bps/psc> a week in advance to confirm the time of this agenda item. You can use a computer, mobile device or telephone to testify during the hearing.

To testify during the hearing, please visit the project website to register: [www.portland.gov/bps/ezones](http://www.portland.gov/bps/ezones). You will receive a confirmation email containing information about joining the virtual hearing. The deadline to sign up for the July 28 PSC hearing is Monday, July 27 at 4:00 p.m. Individuals have two minutes to testify, unless otherwise stated by the Commission Chair at the meeting.

---

The Bureau of Planning and Sustainability is committed to providing meaningful access. For accommodations, modifications, translation, interpretation or other services, please contact at 503-823-7700 or use the City’s TTY at 503-823-6868, or Oregon Relay Service at 711.

# Acknowledgements

This plan is the culmination of two years of work across the City of Portland. Many thanks to the thousands of stakeholders, property owners, renters, business owners and interested people who attended dozens of neighborhood and community meetings and invited staff to their homes and businesses to perform site visits.

## Portland City Council

Ted Wheeler, Mayor & Commissioner in Charge

Chloe Eudaly, Commissioner

Nick Fish, Commissioner (*deceased*)

Amanda Fritz, Commissioner

JoAnn Hardesty, Commissioner

## Portland Planning and Sustainability Commission

Eli Spevak, Chair

Steph Routh, Vice Chair

Katherine Schultz, Vice Chair

Jeff Bachrach

Ben Bortolazzo

Mike Houck

Katie Larsell

Oriana Magnera

Chris Smith

## Bureau of Planning and Sustainability

Andrea Durbin, Director

Joe Zehnder, Chief Planner

Sallie Edmunds, River and Environmental Planning Manager

## Core Team

Mindy Brooks, Environmental Planner, Project Manager

Daniel Soebbing, Assistant Planner

Neil Loehlein, GIS Analyst

Marc Peters, Environmental Specialist (BES)

Chad Smith, Environmental Specialist (BES)

Matt Vesh, Environmental Specialist (BES)

Xanthia Wolland, Intern

## Contributing Staff

Shannon Buono, Eden Dabbs, Krista Gust, Carmen Piekarski

**Bureau of Environmental Services:** Kaitlin Lovell, Marie Walkiewicz, Paul Ketcham, Jennifer Antak, Heidi Berg, Ethan Brown, Melissa Brown, Lisa Moscinski, Darian Santer, Naomi Tsurumi, and Christa Von Behren

**Bureau of Parks and Recreation:** Brett Horner, Emily Roth, Katie Dunham, Kendra Peterson-Morgan, Laura Guderyahn, Christian Haaning, Marshall Johnson, Steve Lower, Nathan Schulte and Becca Shively

**Bureau of Development Services:** Stephanie Beckman and Morgan Steele

**Consultants:** Barney & Worth, facilitation services



Bureau of Planning and Sustainability  
Innovation. Collaboration. Practical Solutions.

## **Table of Contents**

|   |           |
|---|-----------|
| <b>Project Purpose</b>                        | <b>1</b>  |
| <b>Introduction</b>                           | <b>1</b>  |
| <b>Why Protect Natural Resources</b>          | <b>6</b>  |
| <b>Environmental Overlay Zones Explained</b>  | <b>12</b> |
| <b>Project Approach and Methodology</b>       | <b>17</b> |
| Metro Title 13 Compliance                     | 19        |
| Statewide Land Use Planning Goal 5 Compliance | 22        |
| <b>Project Outcomes</b>                       | <b>23</b> |
| <b>Public Engagement</b>                      | <b>25</b> |
| <b>Summary of Resource Site Results</b>       | <b>29</b> |
| Forest Park and Northwest District            | 30        |
| Skyline West                                  | 47        |
| Tryon Creek and Southwest Hills East          | 53        |
| Fanno Creek                                   | 62        |
| East Buttes and Terraces                      | 68        |
| Johnson Creek                                 | 72        |
| Boring Lava Domes                             | 84        |

## Maps

|   |    |
|---|----|
| 1. Environmental Overlay Zone Map Correction Project Area | 2  |
| 2. 2019 Environmental Overlay Zones                       | 4  |
| 3. Environmental Overlay Zone Map Correction Project Area | 18 |
| 4. Ezone Map Correction Site Visits Conducted             | 28 |
| 5. Forest Park and Northwest District Resource Sites      | 31 |
| 6. Skyline West Resource Sites                            | 48 |
| 7. Tryon Creek and Southwest Hills East Resource Sites    | 54 |
| 8. Fanno Creek Resource Sites                             | 63 |
| 9. East Buttes and Terraces Resource Sites                | 69 |
| 10. Johnson Creek Resource Sites                          | 72 |
| 11. Boring Lava Domes Resource Sties                      | 85 |

## Tables

|  |    |
|--|----|
| 1. Ecosystem Services Valuation                                | 9  |
| 2. Methodology for Determining Habitat Conservation Areas      | 20 |
| 3. Forest Park and Northwest District – Summary of Decisions   | 32 |
| 4. Skyline West – Summary of Decisions                         | 49 |
| 5. Tryon Creek and Southwest Hills East – Summary of Decisions | 55 |
| 6. Fanno Creek – Summary of Decisions                          | 64 |
| 7. East Buttes and Terraces – Summary of Decisions             | 70 |
| 8. Johnson Creek – Summary of Decisions                        | 73 |
| 9. Boring Lava Domes – Summary of Decisions                    | 86 |

## Figures

|   |    |
|---|----|
| 1. City of Portland History of Protection Plans   | 3  |
| 2. Inventory of Natural Resource Features, Southwest Hills Resource Protection Plan (1992), Resource Site 111 | 5  |
| 3. Stream Mapping using LiDAR   | 5  |
| 4. Urban Heat Islands in Portland   | 8  |
| 5. Social Determinants of Health  | 10 |
| 6. Relationship of Natural Resources to Public Health   | 11 |
| 7. Environmental Overlay Zones on a Residential Site  | 15 |
| 8. Environmental Overlay Zones on an Industrial Site  | 16 |
| 9. Example of an Unprotected Stream Segment   | 17 |



*Image: Kelly Creek Floodplain Restoration, Portland, OR*

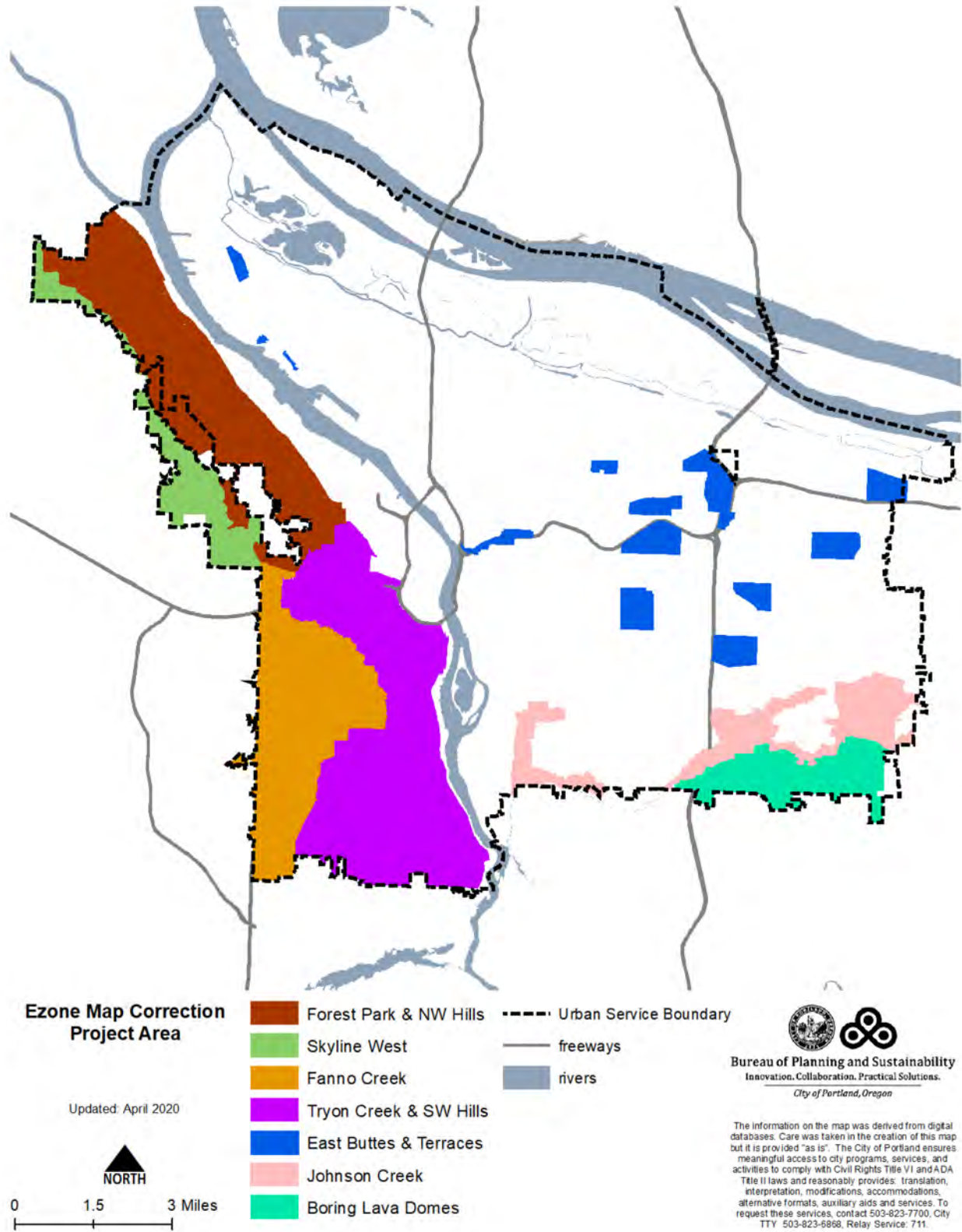
## A. PROJECT PURPOSE

The purpose of the *Environmental Overlay Zone Map Correction* project is to adjust the boundaries of the conservation and protection overlay zones to better align with existing natural resources including streams, wetlands, flood area, vegetation, steep slopes and wildlife habitat. The project areas include the Northwest Hills, Forest Park, Southwest Hills, Tryon Creek Watershed, Fanno Creek Watershed, East Buttes and Terraces, Johnson Creek and Boring Lava Domes (see Map 1: Project Area).

## B. INTRODUCTION

Environmental overlay zones and their associated regulations in Zoning Code Chapter 33.430 protect Portland's natural resources, including rivers, streams, wetlands and wildlife habitat, and minimize risk of damage to homes, business and infrastructure from natural hazards, including landslides, flooding and erosion. The protections also mitigate the effects of climate change, such as reducing air temperature, which helps maintain Portland's livability, and maintain access to nature in the city. The environmental regulations encourage flexibility and innovation in site planning and provide for development that is carefully designed to be sensitive to natural resources.

Beginning in 1989, Portland adopted 13 natural resource conservation and protection plans for areas in the city where there are significant natural resources (Figure 1). Each of these plans were originally adopted to comply with Oregon Statewide Planning Goal 5, Natural Resources, Scenic and Historic Areas, and Open Spaces, as well as contributing towards compliance with Goal 6, Air, Water and Land Resources Quality and Goal 7, Areas Subject to Natural Hazards. By 2002, environmental overlay zones had been applied to resources citywide, and Portland was fully in compliance with Goal 5 (Map 2).



Map 1: Environmental Overlay Zone Map Correction Project Area



- 1989**  
Columbia Corridor Industrial Area 1
- 1991**  
Balch Creek Watershed Protection Plan 2
- 1992**  
Northwest Hills Natural Areas  
Southwest Hills Natural Areas 3
- 1993**  
East Buttes, Terraces and Wetlands 4
- 1994**  
Skyline West Conservation Plan 5
- 1997**  
Boring Lava Domes / Johnson Creek 6
- 1999**  
Fanno Creek and Tributaries 7
- 2000**  
Columbia South Shore 8
- 2002**  
Multnomah County Unincorporated 9
- 1991, '97, '01, '03**  
Johnson Creek Basin 10
- 2004**  
Pleasant Valley District Plan 11
- 2010**  
Middle Columbia Corridor 12
- 2012**  
Natural Resource Inventory Adoption ●
- 2018 - 2020**  
E-Zone Map Correction Project ●

City of Portland, OR  
**30 Years**  
Actively Conserving Natural Resources

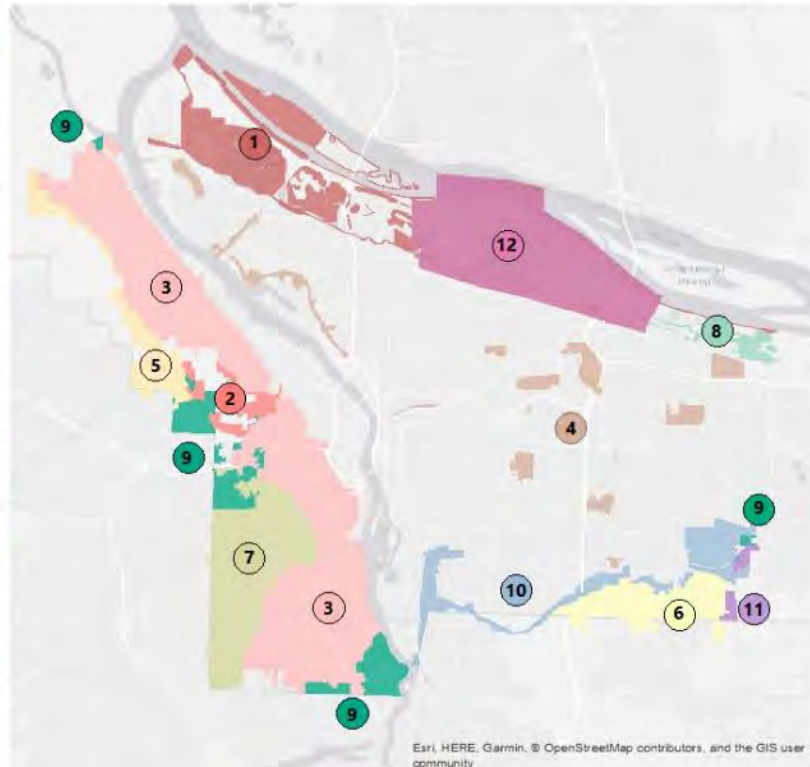
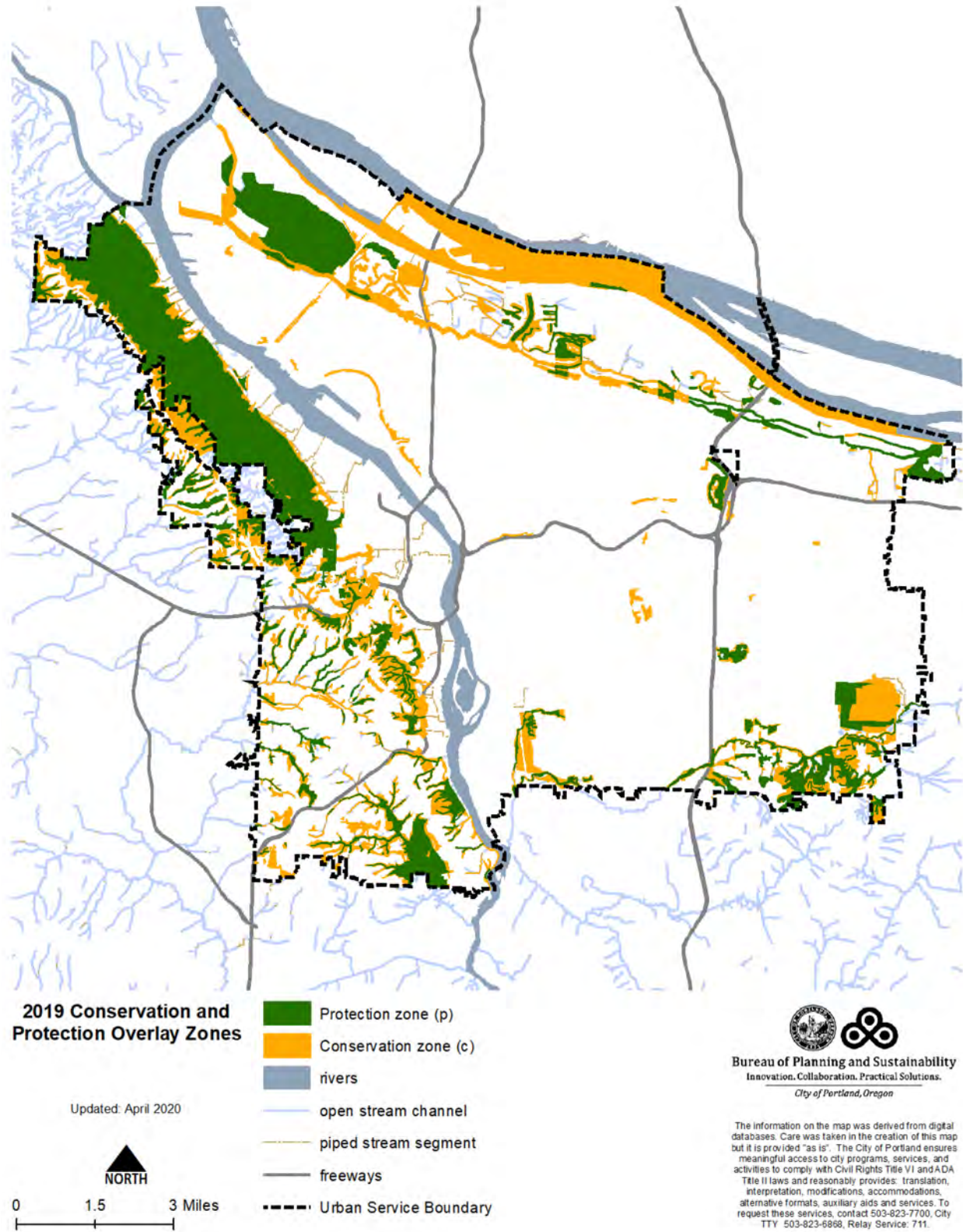
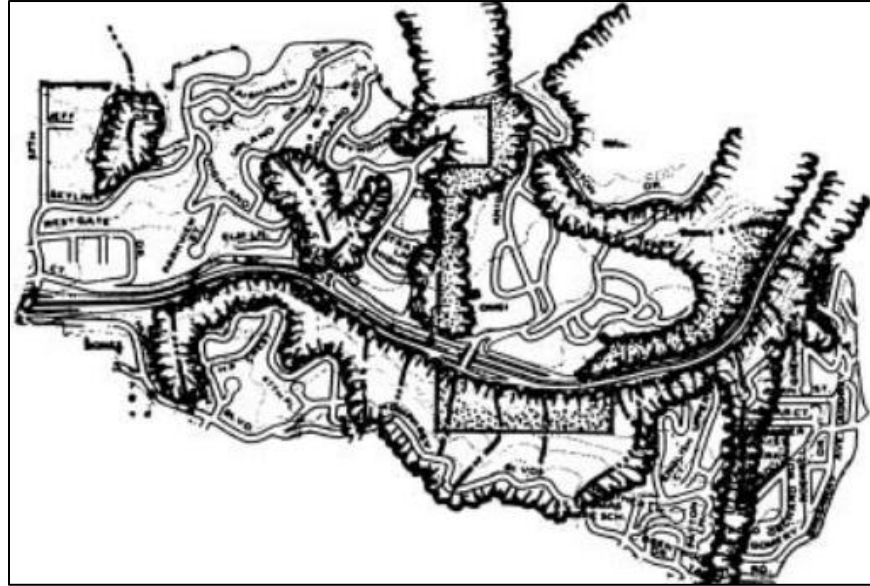


Figure 1: City of Portland History of Protection Plans



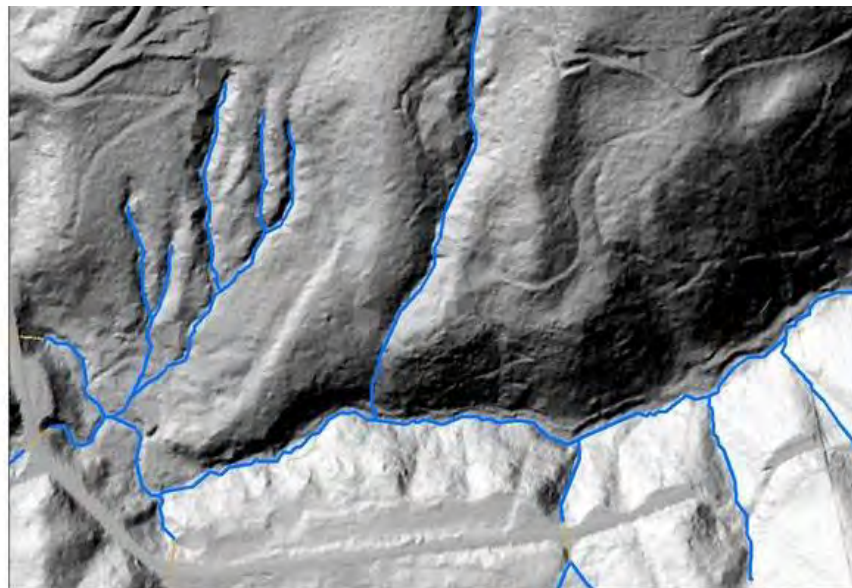
Map 2: 2019 Environmental Conservation and Protection Overlay Zones

In the 1990s, the City’s environmental overlay zones were mapped using relatively “low-tech” methods. Many of the original plans used hand drawings to represent stream channels and tree canopy (Figure 2). Global Positioning Systems (GPS) and digital imagery were not available or were not accurate enough for use until the early 2000s.



*Figure 2: Inventory of Natural Resource Features, Southwest Hills Resource Protection Plan (1992), Resource Site 111*

Today, technology has advanced significantly and can be used to produce more accurate maps of natural resource features. For example, LiDAR is a remote sensing tool that detects light reflected off objects on the ground. LiDAR can be used to accurately map topography, stream channels, wetlands and vegetation – even the height of individual trees (see Figure 3). Other tools and sources include aerial photography updated annually, Google Earth, updated infrastructure maps, etc.



*Figure 3: Stream Mapping using LiDAR*

Using this new and updated technology, the City updated maps of Portland's natural resources in 2005. Over 160 miles of stream alignments were remapped and approximately 75 miles of previously unmapped streams were added. In 2007, mapping of vegetation patches was updated across the city using new aerial photography. The consistent and replicable approach to mapping natural resource features and functions was documented in the *Natural Resources Inventory* (available online at [www.portlandoregon.gov/bps/47529](http://www.portlandoregon.gov/bps/47529)) and adopted by City Council in 2012.

In 2005, Metro adopted Urban Growth Management Function Plan Title 13, Nature in Neighborhoods. Title 13 demonstrates regional compliance with Goal 5 for riparian corridors and wildlife habitat. After 2005, local jurisdictions were required to demonstrate compliance with Title 13 instead of Goal 5 for only those resources. By 2005, Portland already had an environmental program that complied with Goal 5. In 2012, the City used the new *Natural Resources Inventory* and the existing environmental program, including the conservation and protection overlay zones, to demonstrate substantial compliance with Metro Title 13.

In 2018, City Council adopted the 2035 Comprehensive Plan, which directs Portland to comply with the following policies:

**7.19 Natural resource protection.** Protect the quantity, quality, and function of significant natural resources identified in the City's natural resources inventory ....

**7.20 Natural resource inventory.** Maintain an up-to-date inventory by identifying the location and evaluating the relative quantity and quality of natural resources.

**7.21 Environmental plans and regulations.** Maintain up-to-date environmental protection plans and regulations that specify the significant natural resources to be protected and the types of protections to be applied, based on the best data and science available and on an evolution of cumulative environmental, social and economic impacts and tradeoffs.

## C. WHY PROTECT NATURAL RESOURCES

Portland is located at the confluence of the Willamette and Columbia rivers. Humans have lived in this area for tens of thousands of years in part because of the abundant natural resources like salmon, lamprey, elk, Wapato and Camas for food and cedar and oak for housing, transportation and fuel. The area is also home to thousands of fish, mammals, birds, amphibians, reptiles and insect species. Over the years, the land has been altered by urbanization but still provides important functions. Today, the scarcity of natural resources, both in quantity and quality, makes those resources that remain even more important.

Portland is experiencing hotter and dryer summers as well as warmer and wetter winters than the city experienced historically. These changes will have a negative impact on public health through more frequent and longer heat waves, more air quality advisory days, more flooding, and potentially less access to nature if certain habitats cannot adjust to the changes in the local climate. Natural resources provide functions that play an important role in addressing these changes.

Rivers, streams, wetlands and undeveloped flood areas are important for minimizing the risks and costs associated with floods. Studies have found that the relative flood storage capacity in Portland is small as compared to the entirety of the Willamette River and Columbia River basins. Dams along the Willamette and Columbia River are managed, in part, to control flooding. However, the flood storage capacity along smaller water bodies, such as Johnson Creek, is much more significant.



*Image: Flooding in Rivergate, Portland, Oregon (1996)*

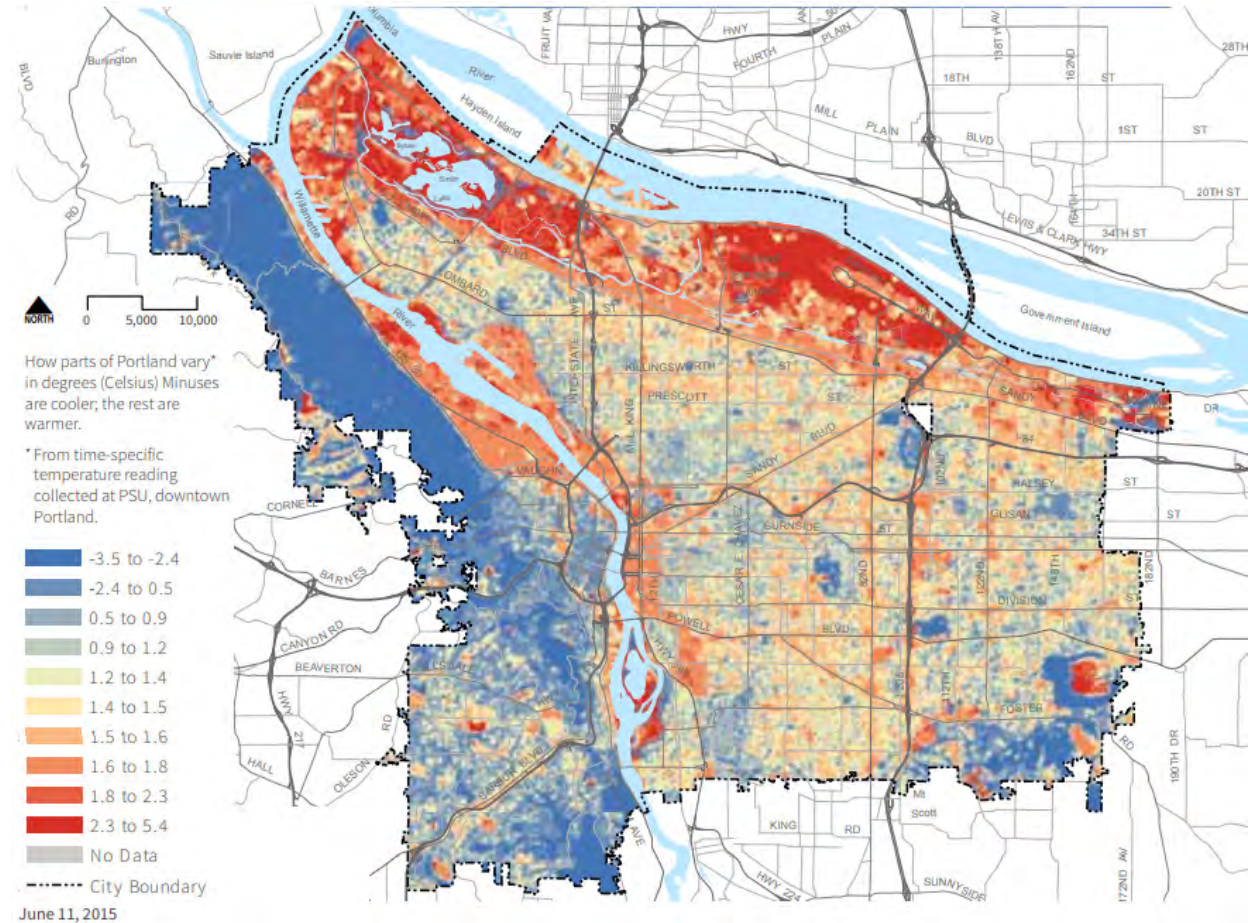
Flooding can cause significant damage to homes and businesses as well as public infrastructure like roads. Lands around Johnson Creek have experienced frequent and repeated flooding for many years. Following a 1996 flood that had widespread impacts around Portland, the Bureau of Environmental Services (BES) developed the Johnson Creek Willing Seller Land Acquisition Program in 1997, which has facilitated the acquisition and preservation of over 250 acres of land that has a high potential for flood mitigation or a high risk of flooding. The land is then restored to increase flood storage capacity, improve fish and wildlife habitat, restore wetlands and create passive recreational activities for city residents. BES has spent approximately \$20M on acquisition to support this program through June 2020.

Other examples of the economic impacts of flooding are below:

- On July 31, 1976 a flash flood in Big Thompson Canyon resulted in damages exceeding \$30 million. In 2013, a second Big Thompson flood destroyed Vistenz-Smith Park and Sylvan Dale Ranch, two locations that commemorated the 1976 flood.
- Following the 1993 Mississippi River Floods the town of Valmyer, Illinois took roughly \$28 million in recovery funds and moved the entire town.
- In 1997 in Grand Forks, North Dakota (population of roughly 50,000 at the time), sustained more than \$1 billion in damages from flooding.

By protecting rivers, streams, wetlands and undeveloped flood areas, including riparian areas around the water features, the stormwater management and flood storage functions can be maintained.

Extreme heat events are becoming more common in Portland. In the United States, extreme heat causes more deaths annually than all other weather events and natural hazards (Luber, 2008). Areas with more tree canopy experience less heat than areas with less tree canopy, as shown in Figure 4.



Source: Sustaining Urban Places Research Lab (SURP), Portland State University, 2015

Figure 4: Urban Heat Islands in Portland

Trees also provide soil stabilization functions, particularly on steep slopes. Tree canopy attenuates rain fall, roots uptake ground water and roots hold soil in place. This reduces landslide risks and damage to private property and public infrastructure.



*Image: Landslide in Southwest Portland (2008)*

These functions provided by natural resources are called ecosystem services and provide economic value. Ecosystem services include water conveyance, purification, and flood control, air cooling and purification, carbon sequestration, soil fertilization, and pollination. Ecosystem goods include commodities like food, fuel, fisheries, timber, minerals, etc. Ecosystem goods also include supporting recreation and tourism.

Table 1 provides a summary of the economic value of the ecosystem services provided by different natural resource features. These numbers come from the study of functions like the amount of pollutants removed from the air by trees. Trees remove carbon dioxide, nitrogen dioxide, sulfur dioxide, ozone and particulate matter. This has economic benefits including reduced health care costs associated with respiratory illness. Another example are streams and wetlands which manage stormwater, remove pollutants from water and regulate floods. Maintaining existing streams and wetlands reduces the need for additional infrastructure like stormwater pipes, thus reducing the public cost burden. Another example is shallow water which is critical habitat for salmon and supports the commercial fishing industry.

**Table 1: Ecosystem Services Valuation (2011\$/Acre/Year)**

| Habitat Type                | Air Purification | Carbon Sequestration | Water Purification | Wildlife Habitat Value | Total Value      |
|-----------------------------|------------------|----------------------|--------------------|------------------------|------------------|
| Forest/Woodland             | \$73–\$267       | \$26–\$92            | Not Quantified     | \$309–\$516            | \$408–\$875      |
| Wetland                     | \$74–\$266       | Not Quantified       | \$153–\$664        | \$3,095–\$11,347       | \$3,322–\$12,277 |
| Shrubland                   | \$30–\$110       | \$24–\$88            | Not Quantified     | \$309–\$516            | \$363–\$714      |
| Grassland                   | \$24–\$89        | \$24–\$88            | Not Quantified     | \$309–\$516            | \$357–\$693      |
| Shallow Water               | Not Quantified   | Not Quantified       | Not Quantified     | \$1,037–\$15,473       | \$1,032–\$15,473 |
| Source: ECONorthwest (2012) |                  |                      |                    |                        |                  |

Some ecosystem services are more difficult to quantify but do have an economic benefit. For example, bird watching is part of the eco-tourism industry and has an estimated value of \$43-\$339/acre/year (Woodward, 2001; Dodds, 2008).

There are direct economic benefits for properties too. A Portland-based study done by Donovan and Butry in 2010 found that trees within 100 feet of houses added approximately \$8,870 to the price of a house, which represents 3.0% of sale price. Those trees also provide benefits such as cooling the air in the summer and attenuating rain in the winter.

Access to natural areas and open spaces has an impact on human behavior and psyche. Access can mean a range of things from viewing vegetation to bird watching to hiking or boating. Dr. Roger Ulrich of Texas A&M's Center for Health Systems and Design found that passive scenic values, such as looking at trees, reduces stress, lowers blood pressure and enhances medical recovery (Ulrich et al. 1991). The presence of trees and grass can lower the incidence of aggression and violent behavior (Kuo and Sullivan, 2001b). Common green areas in neighborhoods can also increase community ties and support social networks, which a determining factor in overall health.

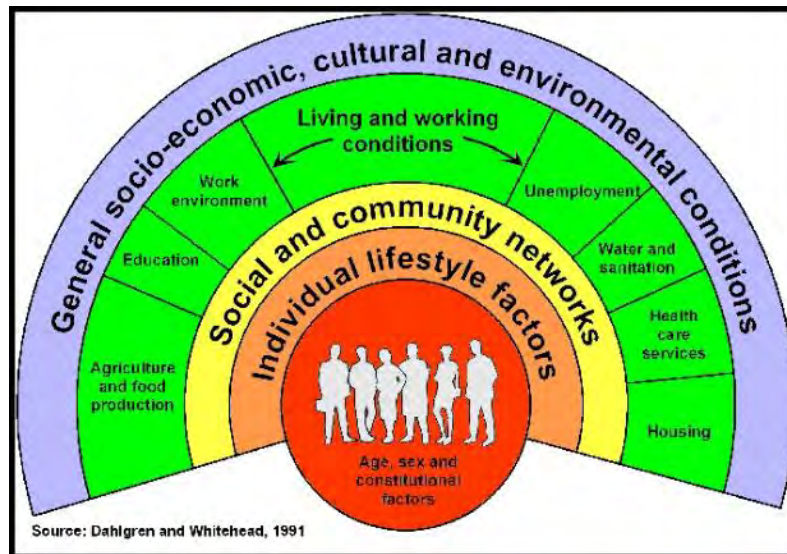


Figure 5: Social Determinants of Health (Dahlgren, 1991)

Recreation has multiple health benefits. For people who are inactive, even small increases in physical activity can yield numerous health benefits (Mult. Co. Health Department, 2012). Exercise improves overall health, which reduces public and private health care costs, improves quality of life, and may help people live longer (Nieman, 1998). Activities such as walking in forested areas help boost the immune system (Sachs and Segal, 1994). In addition, the Centers for Disease Control and Prevention strongly recommends improving access to places for physical activities such as biking or hiking trails to reduce the risk of cardiovascular disease, diabetes, obesity, selected cancers and musculoskeletal conditions.

The British Columbia Center for Disease Control developed a toolkit that makes links between protecting natural resources and public health (Figure 6). The first planning principle is to



preserve and connect open space and environmentally sensitive areas. This is particularly important in neighborhoods with limited existing natural resources like street trees or parks. By protecting the resources that remain, a strategy can be developed to enhance and reconnect nature in neighborhoods, thus improving physical and mental health.

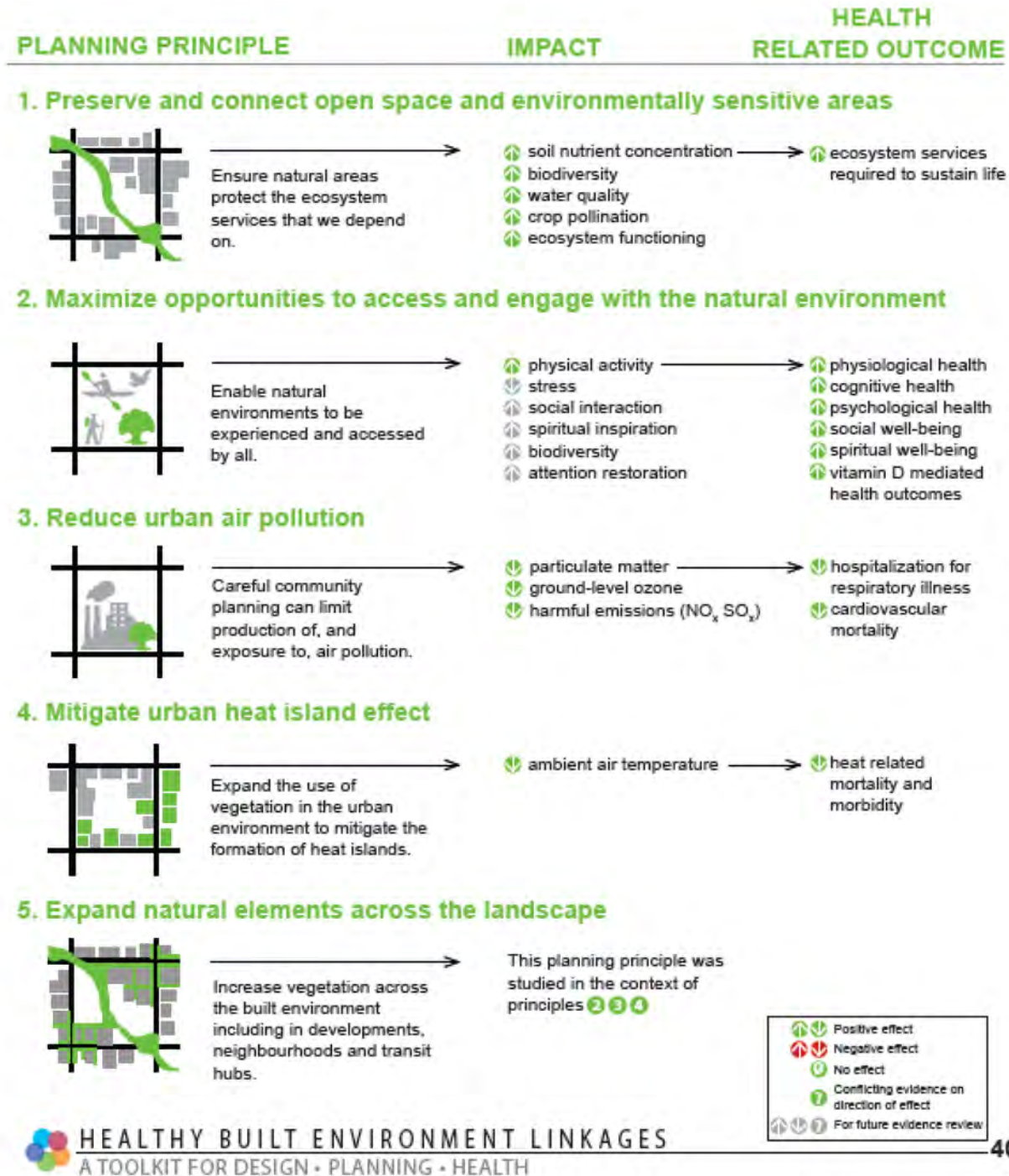


Figure 6: Relationship of Natural Resources to Public Health (British Columbia Centre for Disease Control, 2018)

## D. ENVIRONMENTAL OVERLAY ZONES EXPLAINED

Environmental overlay zones, or ezones, and the regulations that accompany them, are a tool used by the City to help protect important natural resources in Portland.

Examples of natural resources identified for protection include:

- Rivers, streams, and wetlands – this is where fish and wildlife live; these features move water from land to larger rivers and the ocean; they also cool the air and provide places for people to recreate.
- Flood areas – this is where the water goes when it floods; development, like houses, businesses and parking areas, can be damaged during floods; filling in the floodplain can make flooding worse elsewhere.
- Forests and woodlands – this is where wildlife live and people go to hike, bird watch, and relax; trees cool the air and improve air quality, and trees help hold steep slopes in place.
- Unique habitats – large meadows, oak groves, bluffs and other unique features in the city provide habitat and respite for wildlife.

Ezones apply to the portions of a site that contain natural resources or areas, that if disturbed, would have a negative effect on those natural resources or the surrounding property. Ideally, the portion of a site that is in an ezone should be left natural and undeveloped. However, many of the natural resources in Portland have been altered by yards, driveways, parking areas, docks, and even portions of houses and buildings. These areas still provide functions, like flood storage, and additional impacts should be avoided.

When new development, like an addition to a house or a new parking area, is proposed in an ezone, impacts to the resources need to be minimized as much as possible and any resources negatively impacted or destroyed must be replaced.

In Portland there are multiple types of environmental overlay zones. However, this project is only addressing two: protection ‘p’ zone and conservation ‘c’ zone. Each has slightly different regulations and requirements.

### Protection Overlay Zone (p-zone)

The p-zone is applied to the most critical natural resources where new development and impacts should be avoided, except under rare circumstances. The p-zone is typically applied to open rivers, streams, drainageways and wetlands, as well as areas within roughly 50 feet of the waterbodies. The p-zone may be applied to areas that provide unique upland habitat or are at a high risk of natural hazards like flooding, landslides or wildfire. New impacts to resources in the p-zone should be avoided except under special circumstances, such as when a public road needs to cross a stream.

### Conservation Overlay Zone (c-zone)

The c-zone is applied to significant natural resources where new development can be designed to minimize impacts to the resources and mitigation for unavoidable impacts can often be achieved through on-site actions. The c-zone is typically applied to vegetated areas that are located more than 50 feet from open waterbodies. Development that minimizes impacts to the resources in the c-zone may be permitted. Mitigation for impacts is required.

## Natural Resource Feature Definitions

**Land:** The ground itself and any features associated with or located on the ground including but not limited to flood area, vegetation, rip rap, paved areas, structures, buildings, trails, etc.

### Vegetation

**Forest:** Half-acre or larger patch of trees with their crowns overlapping, generally forming 60-100% of cover.

**Woodland:** Half-acre or larger patch of open stands of trees with crowns not usually touching, generally forming 25-60% of cover.

**Shrubland:** Half-acre or larger patch of shrubs generally greater than 0.5 m tall with individuals or clumps overlapping to not touching, generally forming more than 25% of cover with trees generally less than 25% of cover. Vegetation dominated by woody vines (i.e., blackberry) is generally included in this class.

**Herbaceous:** Half-acre or larger patch of herbs (graminoids, forbs, ferns and shrubs less than 0.5m tall) dominant, generally forming at least 25% of cover. This may include shrubs less than 0.5 m tall.

### Waterbodies

**Wetlands:** Areas that are inundated or saturated by surface or ground water at a frequency and duration sufficient to support, and that under normal circumstances do support, a prevalence of vegetation typically adapted for life in saturated soil conditions; although due to landscaping, seeding, mowing or grazing wet-adopted vegetation (hydrophytes) may not be present.

**Stream:** A stream is a channel that has a defined bed and bank and carries water continuously for a week or more during at least the wet season (October through April). Streams may be naturally occurring or may be a relocated, altered or created channel. Streams may contribute water into another waterbody or the water may flow into a pipe or culvert. Streams may flow for some distance underground. Streams are also referred to as *drainageways*, *ditches*, or *drainages* in other City of Portland reports, codes and rules or by other agencies including but not limited to Oregon Department of State Land or US Army Corps of Engineers.

Streams include:

- the water itself, including any vegetation, aquatic life or habitat;
- the channel, bed and banks located between the tops-of-bank; the channel may contain water, whether or not water is actually present;
- intermittent streams, which flow continuously for weeks or months during the wet season and normally cease flowing for weeks or months during dry season;
- sloughs, which are slow-moving, canal-like channels that are primarily formed by tidal influences, backwater from a larger river system, or groundwater;
- oxbows and side channels connected by surface flow to the stream during a portion of the year; and
- drainage from wetlands, ponds, lakes, seeps or springs, which may or may not form a defined bed and bank.

**Drainage:** A drainage is an area on the land that conveys flowing water for only hours or days following a rainfall. If a drainage drains water from a wetland, pond, lake, seep, or spring, even if it does not have a defined bed and bank, then it is classified as a stream.

**Roadside Ditch:** A roadside ditch is a constructed channel typically parallel and directly adjacent to a public or private road. A roadside ditch is designed to capture and convey stormwater runoff from the road and is routinely cleaned (i.e., mechanically scoured or scraped of vegetation and debris) to maintain water conveyance capacity. Naturally occurring streams and drainages that have been relocated due to the construction of a road are not considered a *roadside ditch*.

### Hazards

**Floodplain:** The combination of the FEMA 100-year floodplain (those areas with a 1% or greater chance of flooding in any given year) and areas that were inundated with water during the February 1996 floods. (The FEMA designation for the 100-year floodplain is Special Flood Hazard Area.)

**Steep slopes:** Land with a 25% or greater slope.

Figure 7 shows an example of a house with ezones and what is generally allowed. (Please refer to Portland Zoning Code 33.430 for exact requirements.) Existing gardens, lawns, and other landscaped areas in c- or p-zones can be maintained, and new plants can be installed if they are not listed as a nuisance species on the Portland Plant List. A permitted lawn or landscaped area in either the c- or p-zone can be converted to a garden if no trees are removed. In a portion of the c- or p-zone that is not already landscaped, a new garden can be added if the garden is less than 500 square feet in size, no trees are removed, it is no closer than 50 feet to a stream or wetland, and cumulatively the site doesn't exceed the maximum disturbance area limitations for the base zone. However, if the garden can be placed within an existing lawn or completely outside the environmental overlay zones, that is the preferred alternative.

Figure 8 shows an example of a business with ezones and what is generally allowed. (Please refer to Portland Zoning Code 33.430 for exact requirements.) You can maintain, repair or, in most cases, replace parking areas and other existing structures, like buildings, in the c- or p-zone if the footprint of the parking area or building doesn't increase.

In either example (Figure 7 or 8), expanding the footprint of development within the ezones – making it bigger – is more complicated. It depends on how much of the site is in the ezone and how much of the site has already been developed or disturbed. (Please refer to Portland Zoning Code 33.430 for exact requirements.)



Figure 7: Environmental Overlay Zones on a Residential Site

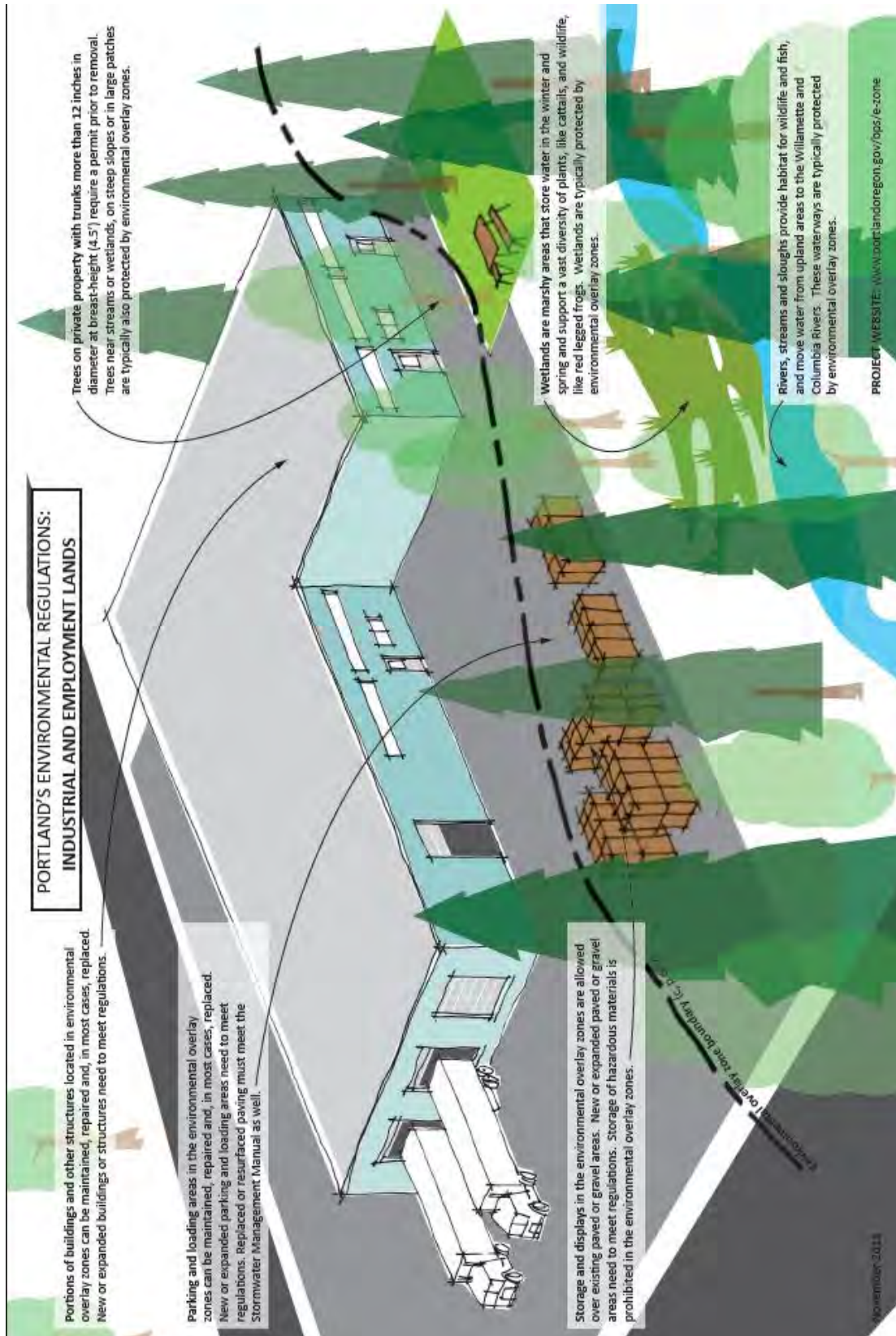


Figure 8: Environmental Overlay Zones on an Industrial Site

## E. PROJECT APPROACH AND METHODOLOGY

The purpose of the *Environmental Overlay Zone Map Correction Project* is to align the location of the conservation and protection overlay zones with the location of existing natural resources identified in the *Natural Resources Inventory* (Figure 9). This project is part of bringing the zoning maps into compliance with the 2035 Comprehensive Plan, while maintaining compliance with Metro Title 13 and Statewide Land Use Planning Goal 5 as well as ensuring resources across Portland are mapped accurately and are regulated in a consistent way.

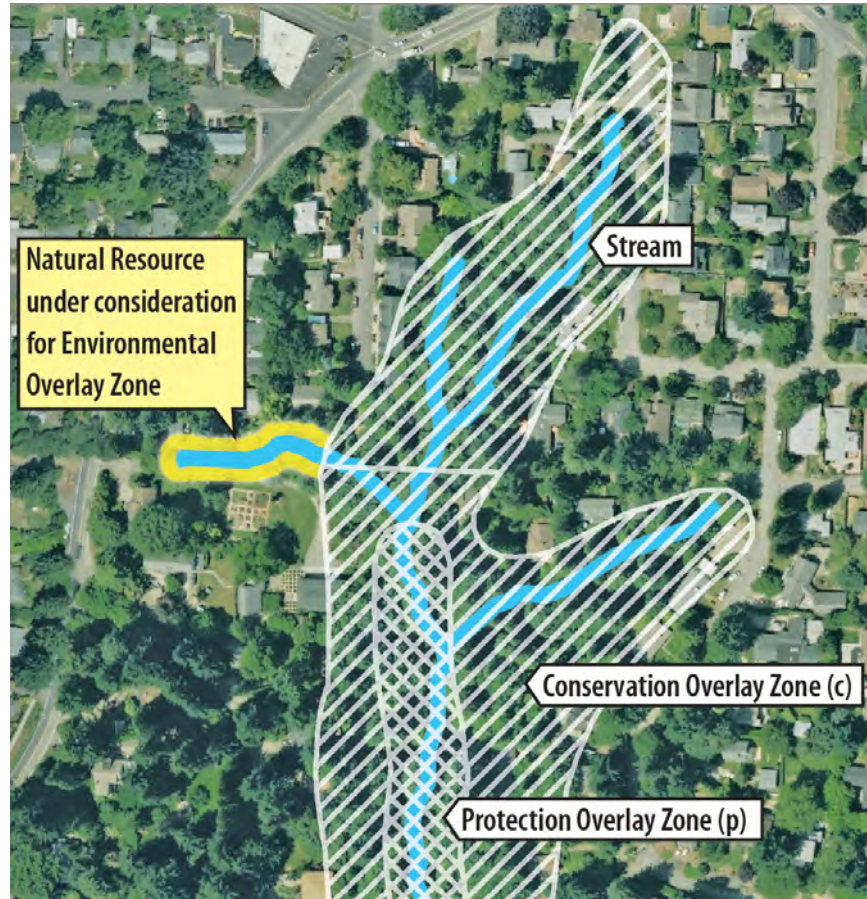
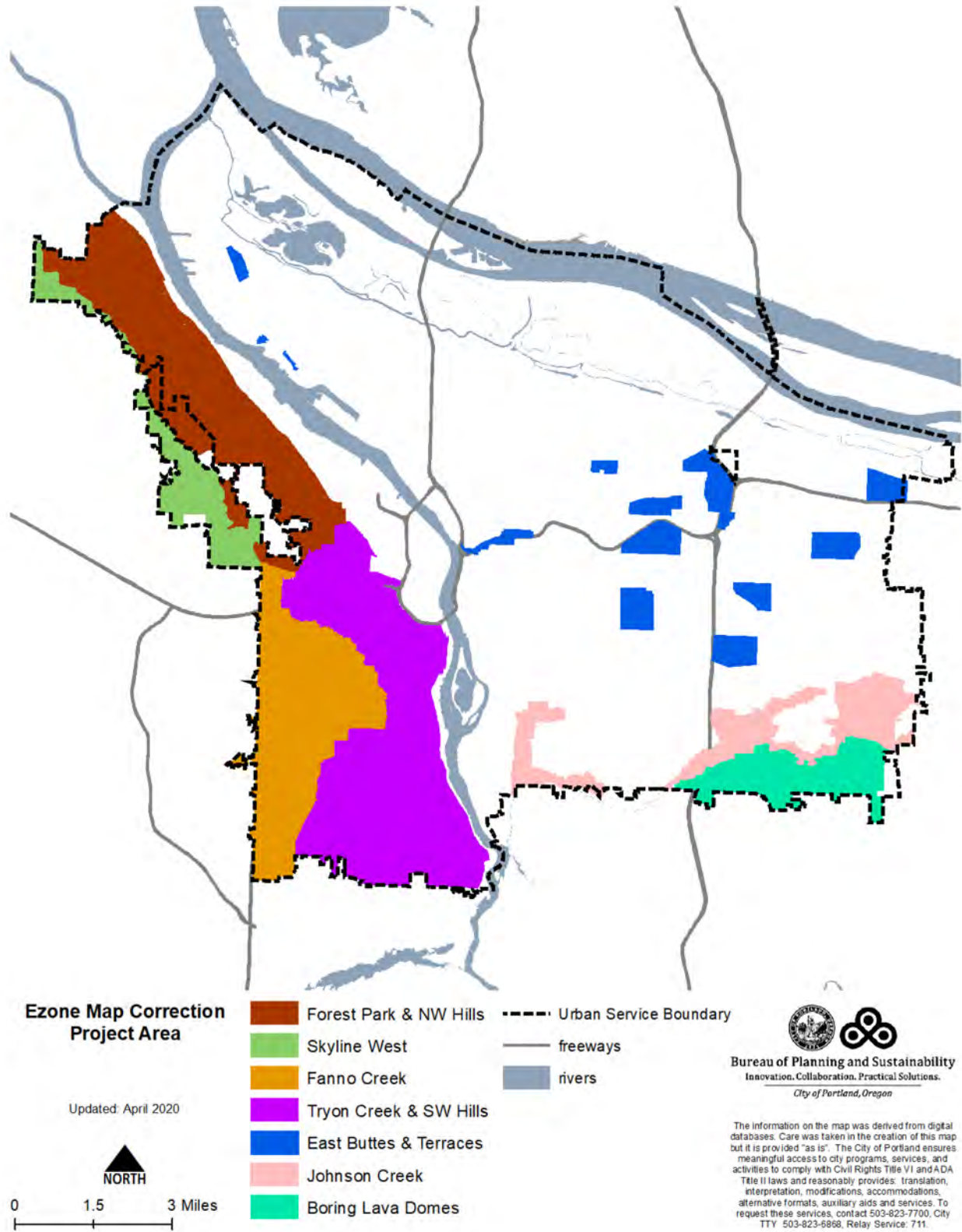


Figure 9: Example of an Unprotected Stream Segment

The geographic scope of the project includes the Northwest Hills, Southwest Hills, Johnson Creek, Boring Lava Domes and East Buttes and Terraces (Map 3). The Willamette River, Columbia River, Columbia Slough and Pleasant Valley are not part of this project and will be addressed separately.



Map 3: Environmental Overlay Zone Map Correction Project Area



Metro Title 13 requires that local jurisdictions adopt or amend programs that protect Habitat Conservation Areas (HCAs). HCAs are rivers, streams, wetlands, vegetated flood areas, riparian corridors (areas within 100 feet of waterbodies) and Habitats of Concerns (specific unique habitat areas). Metro Title 13 stated that other natural resources, primarily upland habitats, are not HCAs and if a local jurisdiction intends on protecting those resources, the local jurisdiction must follow Goal 5 rule OAR 660-023. However, Title 13 also stated that if a local jurisdiction had existing protections for resources that are not HCAs, changes to those protections could not be rolled back.

Based on the requirements of Metro Title 13, this project will:

1. Demonstrate compliance with Title 13 Habitat Conservation Areas by following the rules set out in 3.07; and
2. Demonstrate compliance with Goal 5 for upland habitats that are not a Habitat Conservation Area by following the rules set out in OAR 660-023-0110.

The approach to each is described below.

## **D.1. Metro Title 13 Compliance**

To demonstrate compliance with Title 13, the Ezone Map Correction Project will use the methodology set out by 3.07.1330(b)(2): “Demonstrate that its existing or amended comprehensive plan and existing, amended, or new implementing ordinances substantially comply with the performance standards and best management practices described in Metro Code Section 3.07.1340, and that maps that it has adopted and uses substantially comply with the Metro Habitat Conservation Areas map.”

The specific Title 13 steps include:

- a. Verifying habitat areas.
- b. Determining urban development value.
- c. Confirming Habitat Conservation Areas.
- d. Demonstrating program’s substantial compliance.

### **D.1.a. Verifying Habitat Areas**

The *Title 13 – Nature in Neighborhoods, Request for Metro Determination of Substantial Compliance* report (BPS, December 2012) provides a detailed explanation regarding how the City’s NRI mapping methodologies meet the requirements of 3.07.1340(d)(4) for verifying habitat areas (report available separately). The NRI methodologies for verifying habitat areas have not changed and the NRI GIS models are being rerun to reflect updated feature data. Below is a summary of how NRI habitat verification is completed.

1. Locate water features – rivers, streams, wetlands, other open water and flood area.
2. Identify vegetation cover – >1/2 acre patches of forests, woodland, shrubland and herbaceous vegetation.
3. Verify steep slopes – land with greater than 25% slope upward from river, streams and open water.

4. Confirm Habitats of Concern – habitats that meet specific criteria adopted by the Title 13 inventory.
5. Identify habitat class – ranks associated with natural resource features; see Table 3.07-13d.

Metro determined that all riparian corridors and all but the Class C wildlife habitats were regionally significant under Goal 5. Metro determined that Class C wildlife habitats may be locally significant. Habitats of Concerns, called Special Habitat Areas in Portland, are treated as Class I Riparian Areas in all cases per Title 13, Table 3.07-13d: Locating Boundaries of Class I and Class II Riparian Areas.

### D.1.b. Determining Urban Development Value

Title 13 included an Economic, Social, Environmental and Energy (ESEE) analysis that resulted in urban development value. The Title 13 ESEE replaces the previously adopted City ESEE analyses. To update the Urban Development Value as it applies in Portland, the requirements of 3.07.1340(e) are:

1. Properties designated as the Central City, Regional Centers, Town Centers and Regionally Significant Industrial Areas, as well as regionally significant educational or medical facilities, are of high development value;
2. Properties designated as Main Streets, Station Communities, Other Industrial Areas and Employment Centers are of medium development value; and
3. Properties designated as Neighborhoods and Corridors are low development value.

The 2035 Comprehensive Plan confirmed the geographies of these property classifications. The 2035 Comprehensive Plan was adopted in March 2020.

### D.1.c. Confirming Habitat Conservation Areas

Habitat Conservation Areas (HCA) are the areas for which local jurisdictions must provide a program to protect and conserve the natural resources. Title 13, Table 3.07-13a is the methodology used for confirming HCA. HCAs are Class I and Class II Riparian Areas; Habitats of Concern are treated as Class I Riparian Areas. All upland wildlife habitat and Class III Riparian Areas are not HCAs, except within Parks and Open Space (see Goal 5 Compliance).

| Rank                                   | High Development Value | Medium Development Value | Low Development Value | Parks and Open Space |
|--|------------------------|--------------------------|-----------------------|----------------------|
| Riparian Class I (High Rank)           | Moderate HCA           | High HCA                 | High HCA              | High HCA             |
| Riparian Class II (Medium Rank)        | Low HCA                | Low HCA                  | Moderate HCA          | Moderate HCA         |
| Wildlife Class A (High Rank)           | No HCA                 | No HCA                   | No HCA                | High HCA             |
| Wildlife Class B (Medium Rank)         | No HCA                 | No HCA                   | No HCA                | High HCA             |
| Riparian Class III<br>Wildlife Class C | No HCA                 |                          |                       |                      |

#### **D.1.d. Applying the Environmental Program to Habitat Conservation Areas**

The City's Environmental Program includes many elements; however, the primary tool used for Title 13 compliance are the environmental overlay zones. The location of conservation and protection overlay zones are updated to apply to the confirmed HCAs – Class I Riparian Areas, Class II Riparian Areas and Habitats of Concern, as well as Class A and Class B Wildlife Habitat within parks and open space.

Title 13 3.07.1330(a)(2) states "A city or county that, prior to December 28, 2005, adopted any comprehensive plan amendments or land use regulations that (a) apply to areas identified as upland wildlife habitat on the Inventory Map but not identified as riparian habitat on the Inventory Map, (b) limit development in order to protect fish or wildlife habitat, and (c) were adopted in compliance with division 23 of OAR chapter 660, shall not repeal such amendments or regulations, nor shall it amend such provisions in a manner that would allow any more than a de minimis increase in the amount of development that could occur in areas identified as upland habitat."

Portland's environmental overlay zones do apply to upland habitats. By completing Goal 5 steps to demonstrate compliance for significant habitat that has not been identified by Metro as Habitat Conservation Areas, Portland demonstrates de minimis increase in the amount of development that could occur. Prior to the Ezone Map Correction Project, there were 7,904 acres of protection overlay zone and 5,180 acres of conservation zone in the project area. With the corrections that are proposed by this project, there are 9,112 acres of protection overlay zone and 4,507 acres of conservation zone in the project area. The total change in area of overlay zone (combined protection and conservation) is 4%, this is a de minimis change. There is a significant increase in the acres of protection overlay zone, nearly 2,000 acres (13% increase). Much of this increase is due to corrected stream mapping within areas that already had conservation overlay zones protecting forests and steep slopes. Mapping the existing streams and land within approximately 50 feet results in a shift from conservation to protection overlay zone.

## **D.2. Statewide Land Use Planning Goal 5 Compliance**

Oregon Planning Goal 5 only applies directly to habitat not identified as Habitat Conservation Areas (HCA) under Metro Title 13. Upland habitat and Class III (low rank) Riparian Areas are not a HCA and are addressed through direct application of OAR 660-023-0110 by completing the following steps:

### **D.2.a. Establish resource sites.**

The existing resource site boundaries are consistent with OAR 660-023-0030 and will be maintained with minor modifications.

### **D.2.b. Conduct an inventory of natural resources.**

The Natural Resources Inventory (adopted in 2012 as factual basis for the 2035 Comprehensive Plan) is consistent with OAR 660-023-0030.

### **D.2.c. Conduct an Economic, Social, Environmental and Energy Analysis.**

The ESEE is conducted only for resources that are not identified as Habitat Conservation Areas (HCAs) under Title 13. OAR 660-023-0040 specifies the process that local jurisdictions must follow to conduct an ESEE. This project breaks the ESEE analysis into two parts, both of which are consistent with the OAR: 1) general ESEE and 2) resource site-specific ESEE. The General ESEE evaluates the tradeoffs between protecting types of natural resources and other city goals for economic development, housing, public health, etc. The General ESEE provides an overall recommendation regarding which natural resource features should be protected. The General ESEE recommendation is then affirmed, clarified or modified for resource sites that contain Class III Riparian Areas and/or Upland Habitat. An ESEE decision is made for each resource site that contains these resource areas.

### **D.2.d. Adopt comprehensive plan provisions and land use regulations to implement the decisions.**

Portland has an established and acknowledged program applies environmental overlay zones and codes found in 33.430, Environmental Zones, to significant natural resources. The boundaries of the environmental overlay zones will be updated based on the Natural Resources Inventory and resource site-specific ESEE decisions. The program requirements are consistent with OAR 660-023-0050.

### **D.2.e. Notice and Landowner Involvement.**

Landowners will be informed about and involved in this project consistent with OAR 660-023-0060. Staff have sent mailings to roughly 25,000 properties, attended 23 neighborhood meetings, held 9 open house/drop in events and completed over 300 site visits. These outreach activities have occurred in both HCAs and upland habitats that are being considered for change to the overlay zone boundaries. Public hearings were noticed in June 2020 and the first evidentiary hearing was on July 28, 2020.

## F. PROJECT OUTCOMES

The *Environmental Overlay Zone Map Correction Project* accomplishes the following things within the geographic scope of the project (Map 2):

1. Repeals the previously adopted Goal 5 inventories and Economic, Social, Environmental and Energy analyses and decisions and replaces with a combination of Title 13 and Goal 5 compliance updates;
2. Amends Title 13 compliance by verifying habitat areas, identifying urban development value, confirming Habitat Conservation Areas and amending the location of the conservation and protection overlay zone to substantially align with the Habitat Conservation Areas;
3. Adopts new Goal 5 compliance by following the rules of OAR 660-023 for significant habitat that is not a Title 13 Habitat Conservation area; and
4. Amends Title 13 compliance to demonstrate a de minimis impacts on conservation and protection overlay zones applied to upland habitat.

Below is a description of the project report volumes:

### Volume 1: Summary of Results and Implementation

The document will provide an overview of the project, summarize the approach and methodology (including relationship to Title 13 and Goal 5), and summarize the results of the watershed reports. Volume 1 will also include the implementation tools – updated zoning maps and revised zoning codes.

**Part A** – Project overview, approach and methodology; table summarizing watershed results

**Part B** – Updated zoning maps and codes

### Volume 2: Subarea Results

There are separate reports for each subarea in Portland:

**Part A** – Forest Park and Northwest District

**Part B** – Skyline West

**Part C** – Tryon Creek and Southwest Hills

**Part D** – Fanno Creek

**Part E** – East Buttes and Terraces

**Part F** – Johnson Creek

**Part G** – Boring Lava Domes

Within each subarea there will be defined resource sites and for each resource site there will be information about the riparian corridors and wildlife habitat features and functions including the following maps:

- a) Water Features
- b) Vegetation Features and Steep Slopes
- c) Riparian Area Habitat Classifications
- d) Wildlife Habitat Classifications
- e) Special Habitat Areas

- f) Urban Development Values
- g) Recommended Protections

### Volume 3: Natural Resources Inventory

Approach and methodology used to produce the Natural Resources Inventory plus the citywide results. The results are further presented in Volume 2 by resource site.

### Volume 4: Compliance

Volume 4 will present compliance with Oregon State Planning Goal 5 and Metro Functional Plan Title 13.

#### **Part A – Title 13 Compliance**

Title 13 rules will be followed to demonstrate compliance for Habitat Conservation Areas, which are Class I and Class II riparian corridors. Class III riparian corridors and upland habitats are addressed under Goal 5.

The 2012 Title 13 compliance report will be updated. The report will describe the methodology used to complete the required steps:

1. Verifying habitat areas
2. Determining urban development value
3. Confirming Habitat Conservation Areas

The results and recommended updates to the conservation and protection overlay zones will be reported in Volume 2. Implementation will be reported in Volume 1, Part B.

#### **Part B – Goal 5 Compliance**

For Class III riparian corridors and wildlife habitat, the necessary Goal 5 steps will be documented.

The report will describe the methodology used to complete the required steps:

1. Establish resources site
2. Conduct and inventory of natural resources (Volume 2)
3. Conduct an Economic, Social, Environmental and Energy Analysis

The specific results and recommended updates to the conservation and protection overlay zones will be reported in Volume 2 by resource site. Implementation will be reported in Volume 1, Part B.

### Volume 5: Appendices

Includes the reference list, examples of the public notices, properties with protection-to-conservation zone conversions and the special status species list.

## G. PUBLIC ENGAGEMENT

The *Environmental Overlay Zone Map Correction Project* brings together two years of work and voices of thousands. Below is a description of the public engagement events and activities. The public will continue to play a crucial role moving forward as the project is heard by the Planning and Sustainability Commission in the summer and City Council in the winter of 2020. Additional information about public engagement will be added to this section as the project proceeds.

A summary of the public engagement is below and a detailed description follows:

1. Mailings were sent to different parts of the project area on 7/27/18, 12/5/18, 2/1/19, 3/28/19, and 6/21/19. A total of 16,838 postcards were sent to the owners of properties with existing or draft corrected environmental overlay zones.
2. Between August 2018 and October 2019, staff presented at 36 neighborhood association meetings to inform people about the project, answer questions and demonstrate the interactive online map. A total of 622 people attended the meetings.
3. In December 2019, staff notified property owners in the Columbia Slough watershed that the industrial lands and surrounding areas would be moved from the Ezone Map Correction Project to a future project.
4. Between 8/19/18 and 7/25/19, staff held six drop-in hours to engage people in the project. A total of 48 people attended the drop-in hours.
5. Between 09/5/18 and 11/8/19, staff conducted site visits at 224 properties to confirm the location and extent of natural resource features and help property owners understand how the project may impact them (Map 3).
6. On 11/15/19 and 11/21/19, 24,714 letters were sent to all impacted property owners and all renters/leases notifying them of the opportunity to review the Discussion Draft.
7. Between 12/4/19 and 1/8/20, three open house events were held to provide information about the project and an opportunity for people to meet one-on-one with staff. A total of 152 people attended.
8. On June 25, 2020 Measure 56 notices sent to property owners in advance of the first hearing at Planning and Sustainability Commission.
9. On July 28, 2020, a public hearing was held before Planning and Sustainability Commission.
10. On *[to be added]*, a public hearing was held before City Council.

### Mailings and Notices

People living or working on properties that are impacted by environmental overlay zones received mailings and notices from the City of Portland. Examples of the postcard, letters and notices are found in Appendix C.

Between July 2018 and June 2019, 16,838 postcards were sent to all property owners with existing or proposed environmental overlay zones on their site. The postcards included contact information and two-three upcoming community meetings where people could find out more about the project. Also included was a link to the project website and online interactive map.

On November 15, 2019 and November 21, 2019, 24,714 letters were sent to impacted properties. The letters were sent to property addresses and site addresses, so that not only were owners contacted but also renters and those leasing properties. In addition, all sites within 50 feet of a property impacted by the project also received a letter.

Properties with wetlands received a specific letter because concurrent with the Ezone Map Correction Project, the Bureau of Environmental Services is undertaking the Wetland Inventory Project (WIP). WIP is systematically updating wetlands mapping following a US Army Corps of Engineers wetland determination process. The Ezone Map Correction Project is using the WIP wetland data to update the Natural Resources Inventory. Property owners with wetlands identified on their site were offered the opportunity to have a City Wetland Scientist perform a free, on-site wetland determination to formally document the location and extent of the wetland.

The City performed an analysis to determine, of those properties impacted, what are the most common languages other than English that are spoken. There were five languages that make up the majority of impacted people with limited English proficiency: Spanish, Russian, Ukrainian, Vietnamese and Chinese. Information was provided in the letters in each of the five languages.

On June 25, 2020, staff sent the Measure 56 notice to 16,371 property owners. Properties with existing or proposed conservation or protection overlay zones within the project area received the notice. The first evidentiary hearing was on July 28, 2020. The public was invited to provide written or oral testimony.

#### Neighborhood Meetings

Between June 2018 and June 2019, staff contacted all Neighborhood Associations that have members with environmental overlay zones and offered to attend an upcoming meeting to provide information about the project. Between August 2018 and October 2019, staff presented at 36 neighborhood association meetings to inform people about the project, answer questions and demonstrate the interactive online map. A total of 662 people attended the meetings.

#### Open House Events

Between August 2018 and July 2019, staff held six drop-in hours: two in outer east Portland, two in the Southwest Hills and two in the Columbia Slough watershed. In each area, one of the drop-in hours was held from 11:00am to 1:00pm and the second was held on a different date from 5:00pm to 7:00pm. The events were held at libraries in outer east and Southwest Hills and at the Multnomah County Drainage District offices in the Columbia Slough. These drop-in hours were an opportunity for people to meet one-on-one with staff, look at the proposed changes to the environmental overlay zones on their site and ask questions. A total of 48 people attended the drop-in hours.

On December 4, 2019, December 11, 2019 and January 8, 2020 staff held three open house events. Information about the time and location were included in mailings sent on November 15, 2019 and November 21, 2019. At the events, attendees could get additional information about the project, watch a self-guided presentation and meet with staff to discuss changes proposed for their property. A total of 152 people attended the open house events.



Between July 8 and July 22, 2020, staff held seven on-line events where the public could request a 30-minute one-on-one meeting via Zoom (or other virtual meeting application) to discuss proposed changes to the overlay zones.

#### Help Line

A phone line was dedicated to the Ezone Map Correction Project. Between August 2018 and March 2020, 317 phone calls were received on the help line. The help line provides an opportunity to add real-time language interpretation services if needed.

#### Online Interactive Map

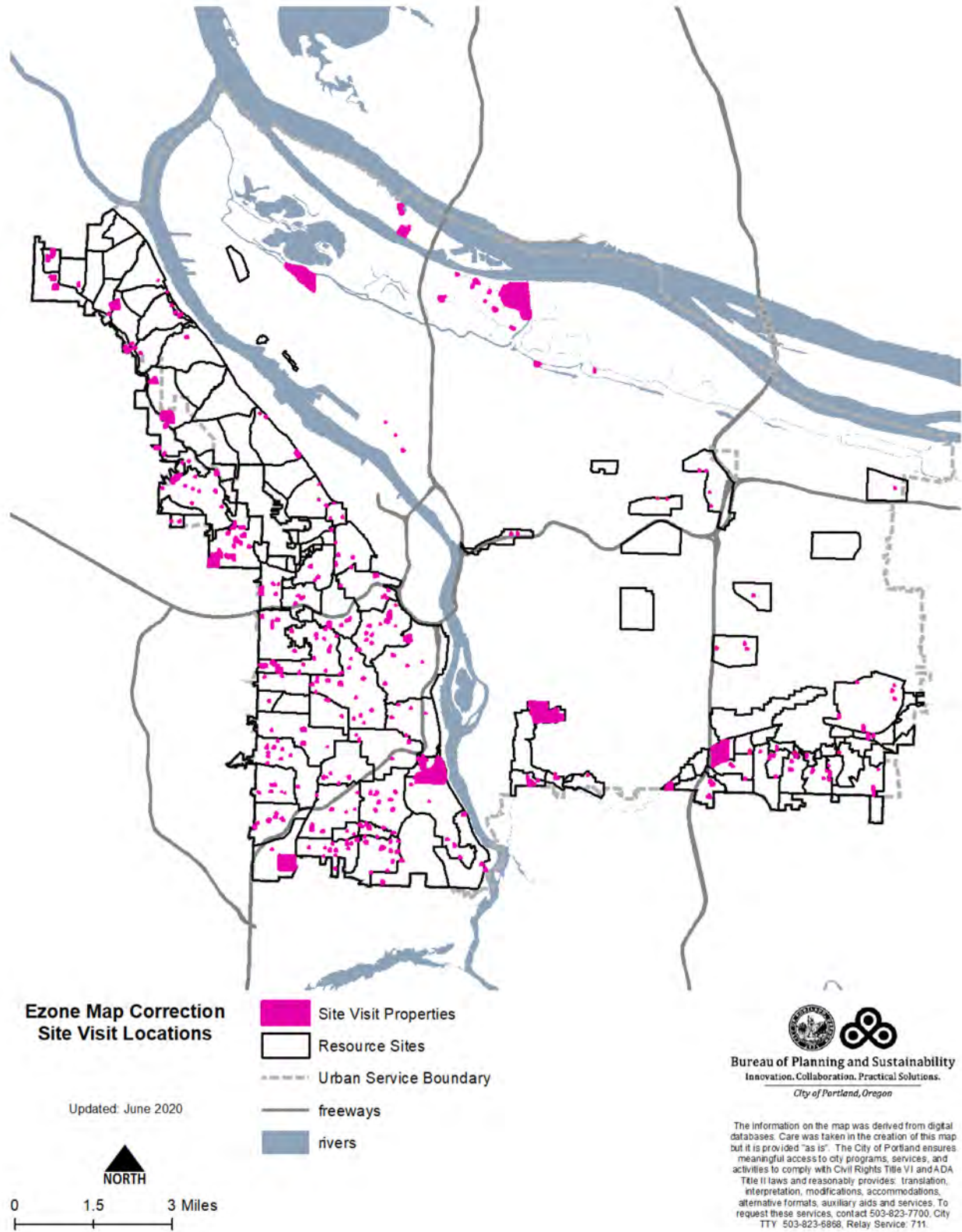
Staff developed an online, interactive map to present the draft corrected environmental overlay zones to the public. Starting in July 2018, as the overlay zones were drafted for each geography of the city (see Map 2), the map was updated. The postcards and letters sent to impacted people included a link to the map.

When people accessed the online map, they are able to search for their site or zoom in to areas of the city. Users could turn on and off different information including the existing overlay zones, proposed draft overlay zone, streams, wetlands, flood area, vegetation and steep slopes. The online map provided links to the report volumes. Also, the online map offered an option to request a site visit directly from the map.

The online interactive map was deactivated when the project moved from the Discussion Draft to the hearings phase of the project. The online interactive map was replaced with the City's Map App, which is a tool that allows people to see the zoning changes and submit formal testimony as part of the hearings. The Measure 56 notice included a link to the City's Map App.

#### Site Visits

Site visits were a critical component of public engagement as well as updating the Natural Resources Inventory of mapped features. The postcards and letters sent to impacted people encouraged them to invite staff to perform site visits. Staff never enter private property without expressed consent from the property owner. At the site visits, staff documented the location of streams, wetlands, vegetation and steep slopes and then used that information to correct the Natural Resources Inventory maps. Staff also answered people's questions about the project and how it impacts their property. Between August 2018 and June 2020, 356 site visits were conducted (Map 4). Site visits were postponed during March, April and May due to the COVID-19 pandemic. Site visits resumed on June 1, 2020 with new safety standards including no indoor meetings, six feet of physical distance between participants, masks, and disinfection protocols for equipment between site visit locations.



Map 4: Ezone Map Correction Site Visits Conducted (updated June 2020)

## H. SUMMARY OF RESOURCE SITE RESULTS

The application of the environmental overlay zones to the natural resources is summarized for each resource site<sup>1</sup> in the following geographies:

1. Forest Park and Northwest District (FP)
2. Skyline West (SK)
3. Tryon Creek and Southwest Hills East (SW)
4. Fanno Creek (FC)
5. East Buttes and Terraces (EB)
6. Johnson Creek Watershed (JC)
7. Boring Lava Domes (BL)

The summary is intended to be a quick guide to explain which resource features should be protected by which environmental overlay zone. Additional information is provided in Volume 2, Part A – G.

---

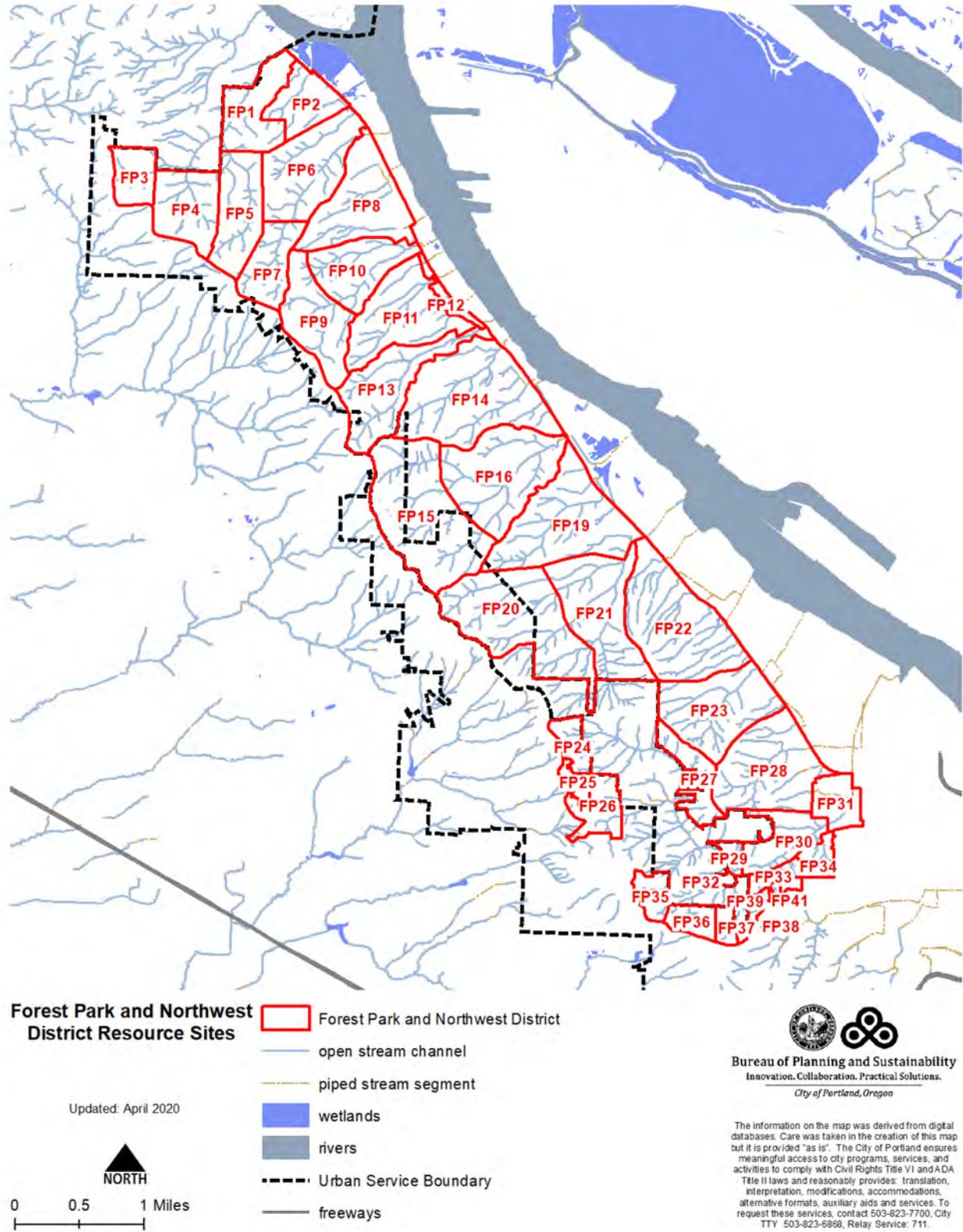
<sup>1</sup> Resource sites are an organizing structure that has been maintained from the previous Goal 5 plans. Resource sites were developed to comply with Goal 5, which requires the economic, social, environmental and energy (ESEE) analysis to be conducted by resource site. A resource site could be one or more properties and had no other size limitations.

## **G.1. Forest Park and Northwest District**

The Forest Park and Northwest District plan geography, shown in Map 4, includes 41 resource sites and is located generally east of NW Skyline Boulevard, north of W Burnside Road and west of the Willamette Greenway boundary.

Table 3 summarizes results of the analysis presented in Volumes 2 – 4 and the application of conservation and protection overlay zones to the natural resource features by resource sites within the Forest Park and Northwest District geography. Additional information is found in Volume 2, Part A; if there are discrepancies, Volume 2, Part A takes precedence over the summary table.

When the table states “land within” a certain distance of a river, stream or wetland the land includes all resources associated with the land including soils, flood area, vegetation and steep slopes, as well as developed land. Yards, decks, buildings, parking, loading, etc. located within that distance are also subject to the overlay zones.



Map 5: Forest Park and Northwest District Resource Sites

| <b>Table 3: Forest Park and Northwest District – Summary of Results</b> |  |                                   |
|---|--|-----------------------------------|
| <b>Resource Site</b>  | <b>Natural Resource Feature</b>  | <b>Environmental Overlay Zone</b> |
| FP1   | Stream channels to top-of-bank   | protection (p)                    |
|   | Wetlands   | protection (p)                    |
|   | Land within 50 feet of wetlands  | protection (p)                    |
|   | Inside of public parks, land within 50 feet of the top-of-bank of streams  | protection (p)                    |
|   | Inside of public parks, all vegetation contiguous to but more than 50 feet from the top-of-bank of streams                                 | protection (p)                    |
|   | Inside of public parks, all vegetation on steep slopes contiguous to but more than 50 feet from the top-of-bank of streams                 | protection (p)                    |
|   | Outside of public parks, land within 25 feet of the top-of-bank of streams   | protection (p)                    |
|   | Outside of public parks, land between 25 feet and 50 feet of the top-of-bank of streams  | conservation (c)                  |
|   | Outside of public parks, forest or woodland vegetation contiguous to but more than 50 feet from the top-of-bank of streams                 | conservation (c)                  |
|   | Outside of public parks, forest or woodland vegetation on steep slopes contiguous to but more than 50 feet from the top-of-bank of streams | conservation (c)                  |
| FP2   | Stream channels to top-of-bank   | protection (p)                    |
|   | Wetlands   | protection (p)                    |
|   | Land within 50 feet of wetlands  | protection (p)                    |
|   | Inside of public parks, land within 50 feet of the top-of-bank of streams  | protection (p)                    |
|   | Inside of public parks, all vegetation contiguous to but more than 50 feet from the top-of-bank of streams                                 | protection (p)                    |
|   | Inside of public parks, all vegetation on steep slopes contiguous to but more than 50 feet from the top-of-bank of streams                 | protection (p)                    |
|   | Outside of public parks, land within 25 feet of the top-of-bank of streams   | protection (p)                    |
|   | Outside of public parks, land between 25 feet and 50 feet of the top-of-bank of streams  | conservation (c)                  |
|   | Outside of public parks, forest or woodland vegetation contiguous to but more than 50 feet from the top-of-bank of streams                 | conservation (c)                  |
|   | Outside of public parks, forest or woodland vegetation on steep slopes contiguous to but more than 50 feet from the top-of-bank of streams | conservation (c)                  |

| <b>Table 3: Forest Park and Northwest District – Summary of Decisions</b> |  |                                   |
|---|--|-----------------------------------|
| <b>Resource Site</b>  | <b>Natural Resource Feature</b>  | <b>Environmental Overlay Zone</b> |
| FP3   | Stream channels to top-of-bank   | protection (p)                    |
|   | Wetlands   | protection (p)                    |
|   | Land within 50 feet of wetlands  | protection (p)                    |
|   | Land within 50 feet of the top-of-bank of streams  | protection (p)                    |
|   | Inside of public parks, all vegetation contiguous to but more than 50 feet from the top-of-bank of streams                                 | protection (p)                    |
|   | Inside of public parks, all vegetation on steep slopes contiguous to but more than 50 feet from the top-of-bank of streams                 | protection (p)                    |
|   | Outside of public parks, forest or woodland vegetation contiguous to but more than 50 feet from the top-of-bank of streams                 | conservation (c)                  |
|   | Outside of public parks, forest or woodland vegetation on steep slopes contiguous to but more than 50 feet from the top-of-bank of streams | conservation (c)                  |
| FP4   | Stream channels to top-of-bank   | protection (p)                    |
|   | Wetlands   | protection (p)                    |
|   | Land within 50 feet of wetlands  | protection (p)                    |
|   | Land within 50 feet of the top-of-bank of streams  | protection (p)                    |
|   | Inside of public parks, all vegetation contiguous to but more than 50 feet from the top-of-bank of streams                                 | protection (p)                    |
|   | Inside of public parks, all vegetation on steep slopes contiguous to but more than 50 feet from the top-of-bank of streams                 | protection (p)                    |
|   | Outside of public parks, forest or woodland vegetation contiguous to but more than 50 feet from the top-of-bank of streams                 | conservation (c)                  |
|   | Outside of public parks, forest or woodland vegetation on steep slopes contiguous to but more than 50 feet from the top-of-bank of streams | conservation (c)                  |
| FP5   | Stream channels to top-of-bank   | protection (p)                    |
|   | Wetlands   | protection (p)                    |
|   | Land within 50 feet of wetlands  | protection (p)                    |
|   | Land within 50 feet of the top-of-bank of streams  | protection (p)                    |
|   | Inside of public parks, all vegetation contiguous to but more than 50 feet from the top-of-bank of streams                                 | protection (p)                    |
|   | Inside of public parks, all vegetation on steep slopes contiguous to but more than 50 feet from the top-of-bank of streams                 | protection (p)                    |
|   | Outside of public parks, forest or woodland vegetation contiguous to but more than 50 feet from the top-of-bank of streams                 | conservation (c)                  |
|   | Outside of public parks, forest or woodland vegetation on steep slopes contiguous to but more than 50 feet from the top-of-bank of streams | conservation (c)                  |

| <b>Table 3: Forest Park and Northwest District – Summary of Decisions</b> |  |                                   |
|---|--|-----------------------------------|
| <b>Resource Site</b>  | <b>Natural Resource Feature</b>  | <b>Environmental Overlay Zone</b> |
| FP6   | Stream channels to top-of-bank   | protection (p)                    |
|   | Wetlands   | protection (p)                    |
|   | Land within 50 feet of wetlands  | protection (p)                    |
|   | Inside of public parks, land within 50 feet of the top-of-bank of streams  | protection (p)                    |
|   | Inside of public parks, all vegetation contiguous to but more than 50 feet from the top-of-bank of streams                                 | protection (p)                    |
|   | Inside of public parks, all vegetation on steep slopes contiguous to but more than 50 feet from the top-of-bank of streams                 | protection (p)                    |
|   | Outside of public parks, land within 25 feet of the top-of-bank of streams   | protection (p)                    |
|   | Outside of public parks, land between 25 feet and 50 feet of the top-of-bank of streams  | conservation (c)                  |
|   | Outside of public parks, forest or woodland vegetation contiguous to but more than 50 feet from the top-of-bank of streams                 | conservation (c)                  |
|   | Outside of public parks, forest or woodland vegetation on steep slopes contiguous to but more than 50 feet from the top-of-bank of streams | conservation (c)                  |
| FP7   | Stream channels to top-of-bank   | protection (p)                    |
|   | Wetlands   | protection (p)                    |
|   | Land within 50 feet of wetlands  | protection (p)                    |
|   | Land within 50 feet of the top-of-bank of streams  | protection (p)                    |
|   | Inside of public parks, all vegetation contiguous to but more than 50 feet from the top-of-bank of streams                                 | protection (p)                    |
|   | Inside of public parks, all vegetation on steep slopes contiguous to but more than 50 feet from the top-of-bank of streams                 | protection (p)                    |
|   | Outside of public parks, forest and woodland vegetation contiguous to but more than 50 feet from top-of-bank of streams                    | conservation (c)                  |
|   | Outside of public parks, forest and woodland vegetation on steep slopes (>25%)   | conservation (c)                  |



| <b>Table 3: Forest Park and Northwest District – Summary of Decisions</b> |  |                                   |
|---|--|-----------------------------------|
| <b>Resource Site</b>  | <b>Natural Resource Feature</b>  | <b>Environmental Overlay Zone</b> |
| FP8   | Stream channels to top-of-bank   | protection (p)                    |
|   | Wetlands   | protection (p)                    |
|   | Land within 50 feet of wetlands  | protection (p)                    |
|   | Inside of public parks, land within 50 feet of the top-of-bank of streams  | protection (p)                    |
|   | Inside of public parks, all vegetation contiguous to but more than 50 feet from the top-of-bank of streams                                 | protection (p)                    |
|   | Inside of public parks, all vegetation on steep slopes contiguous to but more than 50 feet from the top-of-bank of streams                 | protection (p)                    |
|   | Outside of public parks, land within 25 feet of the top-of-bank of streams   | protection (p)                    |
|   | Outside of public parks, land between 25 feet and 50 feet of the top-of-bank of streams  | conservation (c)                  |
|   | Outside of public parks, forest or woodland vegetation contiguous to but more than 50 feet from the top-of-bank of streams                 | conservation (c)                  |
|   | Outside of public parks, forest or woodland vegetation on steep slopes contiguous to but more than 50 feet from the top-of-bank of streams | conservation (c)                  |
| FP9   | Stream channels to top-of-bank   | protection (p)                    |
|   | Wetlands   | protection (p)                    |
|   | Land within 50 feet of wetlands  | protection (p)                    |
|   | Land within 50 feet of the top-of-bank of streams  | protection (p)                    |
|   | Inside of public parks, all vegetation contiguous to but more than 50 feet from the top-of-bank of streams                                 | protection (p)                    |
|   | Inside of public parks, all vegetation on steep slopes contiguous to but more than 50 feet from the top-of-bank of streams                 | protection (p)                    |
|   | Outside of public parks, forest or woodland vegetation contiguous to but more than 50 feet from the top-of-bank of streams                 | conservation (c)                  |
|   | Outside of public parks, forest or woodland vegetation on steep slopes contiguous to but more than 50 feet from the top-of-bank of streams | conservation (c)                  |

| <b>Table 3: Forest Park and Northwest District – Summary of Decisions</b> |  |                                   |
|---|--|-----------------------------------|
| <b>Resource Site</b>  | <b>Natural Resource Feature</b>  | <b>Environmental Overlay Zone</b> |
| FP10  | Stream channels to top-of-bank   | protection (p)                    |
|   | Wetlands   | protection (p)                    |
|   | Land within 50 feet of wetlands  | protection (p)                    |
|   | Land within 50 feet of the top-of-bank of streams  | protection (p)                    |
|   | Inside of public parks, all vegetation contiguous to but more than 50 feet from the top-of-bank of streams                                 | protection (p)                    |
|   | Inside of public parks, all vegetation on steep slopes contiguous to but more than 50 feet from the top-of-bank of streams                 | protection (p)                    |
|   | Outside of public parks, forest or woodland vegetation on steep slopes contiguous to but more than 50 feet from the top-of-bank of streams | conservation (c)                  |
|   | Outside of public parks, forest or woodland vegetation contiguous to but more than 50 feet from the top-of-bank of streams                 | conservation (c)                  |
| FP11  | Stream channels to top-of-bank   | protection (p)                    |
|   | Wetlands   | protection (p)                    |
|   | Land within 50 feet of wetlands  | protection (p)                    |
|   | Inside of public parks, land within 50 feet of the top-of-bank of streams  | protection (p)                    |
|   | Inside of public parks, all vegetation contiguous to but more than 50 feet from the top-of-bank of streams                                 | protection (p)                    |
|   | Inside of public parks, all vegetation on steep slopes contiguous to but more than 50 feet from the top-of-bank of streams                 | protection (p)                    |
|   | Outside of public parks, land within 25 feet of the top-of-bank of streams   | protection (p)                    |
|   | Outside of public parks, land between 25 feet and 50 feet of the top-of-bank of streams  | conservation (c)                  |
|   | Outside of public parks, forest or woodland vegetation on steep slopes contiguous to but more than 50 feet from the top-of-bank of streams | conservation (c)                  |
|   | Outside of public parks, forest or woodland vegetation contiguous to but more than 50 feet from the top-of-bank of streams                 | conservation (c)                  |

| <b>Table 3: Forest Park and Northwest District – Summary of Decisions</b> |  |                                   |
|---|--|-----------------------------------|
| <b>Resource Site</b>  | <b>Natural Resource Feature</b>  | <b>Environmental Overlay Zone</b> |
| FP12  | Stream channels to top-of-bank   | protection (p)                    |
|   | Wetlands   | protection (p)                    |
|   | Land within 50 feet of wetlands  | protection (p)                    |
|   | Inside of public parks, land within 50 feet of the top-of-bank of streams  | protection (p)                    |
|   | Inside of public parks, all vegetation contiguous to but more than 50 feet from the top-of-bank of streams                                 | protection (p)                    |
|   | Inside of public parks, all vegetation on steep slopes contiguous to but more than 50 feet from the top-of-bank of streams                 | protection (p)                    |
|   | Outside of public parks, land within 25 feet of the top-of-bank of streams   | protection (p)                    |
|   | Outside of public parks, land between 25 feet and 50 feet of the top-of-bank of streams  | conservation (c)                  |
| FP13  | Stream channels to top-of-bank   | protection (p)                    |
|   | Wetlands   | protection (p)                    |
|   | Land within 50 feet of wetlands  | protection (p)                    |
|   | Land within 50 feet of the top-of-bank of streams  | protection (p)                    |
|   | Inside of public parks, all vegetation contiguous to but more than 50 feet from the top-of-bank of streams                                 | protection (p)                    |
|   | Inside of public parks, all vegetation on steep slopes contiguous to but more than 50 feet from the top-of-bank of streams                 | protection (p)                    |
|   | Outside of public parks, forest or woodland vegetation on steep slopes contiguous to but more than 50 feet from the top-of-bank of streams | conservation (c)                  |
|   | Outside of public parks, forest or woodland vegetation contiguous to but more than 50 feet from the top-of-bank of streams                 | conservation (c)                  |

| <b>Table 3: Forest Park and Northwest District – Summary of Decisions</b> |  |                                   |
|---|--|-----------------------------------|
| <b>Resource Site</b>  | <b>Natural Resource Feature</b>  | <b>Environmental Overlay Zone</b> |
| FP14  | Stream channels to top-of-bank   | protection (p)                    |
|   | Wetlands   | protection (p)                    |
|   | Land within 50 feet of wetlands  | protection (p)                    |
|   | Inside of public parks, land within 50 feet of the top-of-bank of streams  | protection (p)                    |
|   | Inside of public parks, all vegetation contiguous to but more than 50 feet from the top-of-bank of streams                                 | protection (p)                    |
|   | Inside of public parks, all vegetation on steep slopes contiguous to but more than 50 feet from the top-of-bank of streams                 | protection (p)                    |
|   | Outside of public parks, forest or woodland on steep slopes contiguous to but more than 50 feet from the top-of-bank of streams            | conservation (c)                  |
|   | Outside of public parks, forest or woodland contiguous to but more than 50 feet from the top-of-bank of streams                            | conservation (c)                  |
|   | Outside of public parks, land within 25 feet of the top-of-bank of streams   | protection (p)                    |
|   | Outside of public parks, land between 25 feet and 50 feet of the top-of-bank of streams  | conservation (c)                  |
| FP15  | Stream channels to top-of-bank   | protection (p)                    |
|   | Wetlands   | protection (p)                    |
|   | Land within 50 feet of wetlands  | protection (p)                    |
|   | Land within 50 feet of the top-of-bank of streams  | protection (p)                    |
|   | Inside of public parks, all vegetation on steep slopes contiguous to but more than 50 feet from the top-of-bank of streams                 | protection (p)                    |
|   | Inside of public parks, all vegetation contiguous to but more than 50 feet from the top-of-bank of streams                                 | protection (p)                    |
|   | Outside of public parks, forest or woodland vegetation on steep slopes contiguous to but more than 50 feet from the top-of-bank of streams | conservation (c)                  |
|   | Outside of public parks, forest or woodland vegetation contiguous to but more than 50 feet from the top-of-bank of streams                 | conservation (c)                  |

| <b>Table 3: Forest Park and Northwest District – Summary of Decisions</b> |  |                                   |
|---|--|-----------------------------------|
| <b>Resource Site</b>  | <b>Natural Resource Feature</b>  | <b>Environmental Overlay Zone</b> |
| FP16  | Stream channels to top-of-bank   | protection (p)                    |
|   | Wetlands   | protection (p)                    |
|   | Land within 50 feet of wetlands  | protection (p)                    |
|   | Inside of public parks, land within 50 feet of the top-of-bank of streams  | protection (p)                    |
|   | Inside of public parks, all vegetation on steep slopes contiguous to but more than 50 feet from the top-of-bank of streams                 | protection (p)                    |
|   | Inside of public parks, all vegetation contiguous to but more than 50 feet from the top-of-bank of streams                                 | protection (p)                    |
|   | Outside of public parks, land within 25 feet of the top-of-bank of streams   | protection (p)                    |
|   | Outside of public parks, land between 25 feet and 50 feet of the top-of-bank of streams  | conservation (c)                  |
|   | Outside of public parks, forest or woodland vegetation on steep slopes contiguous to but more than 50 feet from the top-of-bank of streams | conservation (c)                  |
|   | Outside of public parks, forest or woodland vegetation contiguous to but more than 50 feet from the top-of-bank of streams                 | conservation (c)                  |
| FP17  | <i>Resource Site FP17 is outside the scope of this project. Please refer to the Northwest Hills Natural Areas Protection Plan.</i>         |                                   |
| FP18  | <i>Resource Site FP18 is outside the scope of this project. Please refer to the Northwest Hills Natural Areas Protection Plan.</i>         |                                   |
| FP19  | Stream channels to top-of-bank   | protection (p)                    |
|   | Wetlands   | protection (p)                    |
|   | Land within 50 feet of wetlands  | protection (p)                    |
|   | Land within 50 feet of the top-of-bank of streams  | protection (p)                    |
|   | Inside of public parks, all vegetation on steep slopes contiguous to but more than 50 feet from the top-of-bank of streams                 | protection (p)                    |
|   | Inside of public parks, all vegetation contiguous to but more than 50 feet from the top-of-bank of streams                                 | protection (p)                    |
|   | Outside of public parks, forest or woodland vegetation on steep slopes contiguous to but more than 50 feet from the top-of-bank of streams | conservation (c)                  |
|   | Outside of public parks, forest or woodland vegetation contiguous to but more than 50 feet from the top-of-bank of streams                 | conservation (c)                  |

| <b>Table 3: Forest Park and Northwest District – Summary of Decisions</b> |  |                                   |
|---|--|-----------------------------------|
| <b>Resource Site</b>  | <b>Natural Resource Feature</b>  | <b>Environmental Overlay Zone</b> |
| FP20  | Stream channels to top-of-bank   | protection (p)                    |
|   | Wetlands   | protection (p)                    |
|   | Land within 50 feet of wetlands  | protection (p)                    |
|   | Land within 50 feet of the top-of-bank of streams  | protection (p)                    |
|   | Inside of public parks, all vegetation on steep slopes contiguous to but more than 50 feet from the top-of-bank of streams                 | protection (p)                    |
|   | Inside of public parks, all vegetation contiguous to but more than 50 feet from the top-of-bank of streams                                 | protection (p)                    |
|   | Outside of public parks, forest or woodland vegetation on steep slopes contiguous to but more than 50 feet from the top-of-bank of streams | conservation (c)                  |
|   | Outside of public parks, forest or woodland vegetation contiguous to but more than 50 feet from the top-of-bank of streams                 | conservation (c)                  |
| FP21  | Stream channels to top-of-bank   | protection (p)                    |
|   | Wetlands   | protection (p)                    |
|   | Land within 50 feet of wetlands  | protection (p)                    |
|   | Inside of public parks, land within 50 feet of the top-of-bank of streams  | protection (p)                    |
|   | Inside of public parks, all vegetation on steep slopes contiguous to but more than 50 feet from the top-of-bank of streams                 | protection (p)                    |
|   | Inside of public parks, all vegetation contiguous to but more than 50 feet from the top-of-bank of streams                                 | protection (p)                    |
|   | Outside of public parks, land within 25 feet of the top-of-bank of streams   | protection (p)                    |
|   | Outside of public parks, land between 25 feet and 50 feet of the top-of-bank of streams  | conservation (c)                  |
|   | Outside of public parks, forest or woodland vegetation on steep slopes contiguous to but more than 50 feet from the top-of-bank of streams | conservation (c)                  |
|   | Outside of public parks, forest or woodland vegetation contiguous to but more than 50 feet from the top-of-bank of streams                 | conservation (c)                  |

| <b>Table 3: Forest Park and Northwest District – Summary of Decisions</b> |  |                                   |
|---|--|-----------------------------------|
| <b>Resource Site</b>  | <b>Natural Resource Feature</b>  | <b>Environmental Overlay Zone</b> |
| FP22  | Stream channels to top-of-bank   | protection (p)                    |
|   | Wetlands   | protection (p)                    |
|   | Land within 50 feet of wetlands  | protection (p)                    |
|   | Inside of public parks, land within 50 feet of the top-of-bank of streams  | protection (p)                    |
|   | Inside of public parks, all vegetation on steep slopes contiguous to but more than 50 feet from the top-of-bank of streams                 | protection (p)                    |
|   | Inside of public parks, all vegetation contiguous to but more than 50 feet from the top-of-bank of streams                                 | protection (p)                    |
|   | Outside of public parks, land within 25 feet of the top-of-bank of streams   | protection (p)                    |
|   | Outside of public parks, land between 25 feet and 50 feet of the top-of-bank of streams  | conservation (c)                  |
|   | Outside of public parks, forest or woodland vegetation on steep slopes contiguous to but more than 50 feet from the top-of-bank of streams | conservation (c)                  |
|   | Outside of public parks, forest or woodland vegetation contiguous to but more than 50 feet from the top-of-bank of streams                 | conservation (c)                  |
| FP23  | Stream channels to top-of-bank   | protection (p)                    |
|   | Wetlands   | protection (p)                    |
|   | Land within 50 feet of wetlands  | protection (p)                    |
|   | Inside of public parks, land within 50 feet of the top-of-bank of streams  | protection (p)                    |
|   | Inside of public parks, all vegetation on steep slopes contiguous to but more than 50 feet from the top-of-bank of streams                 | protection (p)                    |
|   | Inside of public parks, all vegetation contiguous to but more than 50 feet from the top-of-bank of streams                                 | protection (p)                    |
|   | Outside of public parks, land within 25 feet of the top-of-bank of streams   | protection (p)                    |
|   | Outside of public parks, land between 25 feet and 50 feet of the top-of-bank of streams  | conservation (c)                  |
|   | Outside of public parks, forest or woodland vegetation on steep slopes contiguous to but more than 50 feet from the top-of-bank of streams | conservation (c)                  |
|   | Outside of public parks, forest or woodland vegetation contiguous to but more than 50 feet from the top-of-bank of streams                 | conservation (c)                  |

| <b>Table 3: Forest Park and Northwest District – Summary of Decisions</b> |  |                                   |
|---|--|-----------------------------------|
| <b>Resource Site</b>  | <b>Natural Resource Feature</b>  | <b>Environmental Overlay Zone</b> |
| FP24  | Stream channels to top-of-bank   | protection (p)                    |
|   | Land within 50 feet of the top-of-bank of streams  | protection (p)                    |
|   | Forest vegetation contiguous to but more than 50 feet from the top-of-bank of streams and extending to 100 feet from top-of-bank | protection (p)                    |
|   | Forest vegetation on steep slopes contiguous to but more than 100 feet from the top-of-bank of streams                           | conservation (c)                  |
|   | Forest vegetation contiguous to but more than 100 feet from the top-of-bank of streams   | conservation (c)                  |
| FP25  | Stream channels to top-of-bank   | protection (p)                    |
|   | Land within 50 feet of the top-of-bank of streams  | protection (p)                    |
|   | Forest vegetation contiguous to but more than 50 feet from the top-of-bank of streams and extending to 100 feet from top-of-bank | protection (p)                    |
|   | Forest vegetation on steep slopes contiguous to but more than 100 feet from the top-of-bank of streams                           | conservation (c)                  |
|   | Forest vegetation contiguous to but more than 100 feet from the top-of-bank of streams   | conservation (c)                  |
| FP26  | Stream channels to top-of-bank   | protection (p)                    |
|   | Land within 50 feet of the top-of-bank of streams  | protection (p)                    |
|   | Forest vegetation contiguous to but more than 50 feet from the top-of-bank of streams and extending to 100 feet from top-of-bank | protection (p)                    |
|   | Forest vegetation on steep slopes contiguous to but more than 100 feet from the top-of-bank of streams                           | conservation (c)                  |
|   | Forest vegetation contiguous to but more than 100 feet from the top-of-bank of streams   | conservation (c)                  |
| FP27  | Stream channels to top-of-bank   | protection (p)                    |
|   | Land within 50 feet of the top-of-bank of streams  | protection (p)                    |
|   | Forest vegetation on steep slopes  | protection (p)                    |
|   | Forest vegetation  | protection (p)                    |



| <b>Table 3: Forest Park and Northwest District – Summary of Decisions</b> |  |                                   |
|---|--|-----------------------------------|
| <b>Resource Site</b>  | <b>Natural Resource Feature</b>  | <b>Environmental Overlay Zone</b> |
| FP28  | Stream channels to top-of-bank   | protection (p)                    |
|   | Wetlands   | protection (p)                    |
|   | Land within 50 feet of wetlands  | protection (p)                    |
|   | Inside of public parks, land within 50 feet of the top-of-bank of streams  | protection (p)                    |
|   | Inside of public parks, all vegetation on steep slopes contiguous to but more than 50 feet from the top-of-bank of streams                 | protection (p)                    |
|   | Inside of public parks, all vegetation contiguous to but more than 50 feet from the top-of-bank of streams                                 | protection (p)                    |
|   | Outside of public parks, land within 25 feet of the top-of-bank of streams   | protection (p)                    |
|   | Outside of public parks, land between 25 feet and 50 feet of the top-of-bank of streams  | conservation (c)                  |
|   | Outside of public parks, forest or woodland vegetation on steep slopes contiguous to but more than 50 feet from the top-of-bank of streams | conservation (c)                  |
|   | Outside of public parks, forest or woodland vegetation contiguous to but more than 50 feet from the top-of-bank of streams                 | conservation (c)                  |
| FP29  | Stream channels to top-of-bank   | protection (p)                    |
|   | Land within 50 feet of the top-of-bank of streams  | protection (p)                    |
|   | Forest vegetation on steep slopes contiguous to but more than 50 feet from the top-of-bank of streams                                      | protection (p)                    |
|   | Forest vegetation contiguous to but more than 50 feet from the top-of-bank of streams  | protection (p)                    |
| FP30  | Stream channels to top-of-bank   | protection (p)                    |
|   | Land within 50 feet of the top-of-bank of streams  | protection (p)                    |
|   | Forest, woodland, shrubland or herbaceous vegetation on steep slopes contiguous to but more than 50 feet from the top-of-bank of streams   | protection (p)                    |
|   | Forest, woodland, shrubland or herbaceous vegetation contiguous to but more than 50 feet from the top-of-bank of streams                   | protection (p)                    |

| <b>Table 3: Forest Park and Northwest District – Summary of Decisions</b> |  |                                   |
|---|--|-----------------------------------|
| <b>Resource Site</b>  | <b>Natural Resource Feature</b>  | <b>Environmental Overlay Zone</b> |
| FP31  | Stream channels to top-of-bank   | protection (p)                    |
|   | Land within 50 feet of the top-of-bank of streams  | protection (p)                    |
|   | In Forest Park, forest vegetation on steep slopes contiguous to but more than 50 feet from the top-of-bank of streams            | protection (p)                    |
|   | In Forest Park, forest vegetation contiguous to but more than 50 feet from the top-of-bank of streams                            | protection (p)                    |
|   | In Forest Park, forest vegetation on steep slopes not contiguous to the top-of-bank of streams                                   | conservation (c)                  |
|   | In Forest Park, forest vegetation not contiguous to the top-of-bank of streams   | conservation (c)                  |
|   | Outside Forest Park, all forest vegetation on steep slopes   | conservation (c)                  |
|   | Outside Forest Park, all forest vegetation   | conservation (c)                  |
| FP32  | Stream channels to top-of-bank   | protection (p)                    |
|   | Land within 50 feet of the top-of-bank of streams  | protection (p)                    |
|   | Forest vegetation contiguous to but more than 50 feet from the top-of-bank of streams and extending to 200 feet from top-of-bank | protection (p)                    |
|   | Forest vegetation on steep slopes contiguous to but more than 200 feet from the top-of-bank of streams                           | conservation (c)                  |
|   | Forest vegetation contiguous to but more than 200 feet from the top-of-bank of streams   | conservation (c)                  |
| FP33  | Stream channels to top-of-bank   | protection (p)                    |
|   | Land within 50 feet of the top-of-bank of streams  | protection (p)                    |
|   | Forest vegetation on steep slopes contiguous to but more than 50 feet from the top-of-bank of streams                            | protection (p)                    |
|   | Forest vegetation contiguous to but more than 50 feet from the top-of-bank of streams  | protection (p)                    |
|   | Woodland, shrubland or herbaceous vegetation on steep slopes   | conservation (c)                  |
|   | Woodland, shrubland or herbaceous vegetation   | conservation (c)                  |
| FP34  | Stream channels to top-of-bank   | protection (p)                    |
|   | Land within 50 feet of the top-of-bank of streams  | protection (p)                    |
|   | Forest vegetation on steep slopes contiguous to but more than 50 feet from the top-of-bank of streams                            | protection (p)                    |
|   | Forest vegetation contiguous to but more than 50 feet from the top-of-bank of streams  | protection (p)                    |

| <b>Table 3: Forest Park and Northwest District – Summary of Decisions</b> |   |                                   |
|---|---|-----------------------------------|
| <b>Resource Site</b>  | <b>Natural Resource Feature</b>   | <b>Environmental Overlay Zone</b> |
| FP35  | Stream channels to top-of-bank  | protection (p)                    |
|   | Land within 50 feet of the top-of-bank of streams   | protection (p)                    |
|   | Forest vegetation contiguous to but more than 50 feet from the top-of-bank of streams and extending to 100 feet from top-of-bank                    | protection (p)                    |
|   | On specific lots (see resource site-specific ESEE decision), forest vegetation contiguous to but more than 100 feet from the top-of-bank of streams | conservation (c)                  |
| FP36  | Stream channels to top-of-bank  | protection (p)                    |
|   | Land within 50 feet of the top-of-bank of streams   | protection (p)                    |
|   | Forest vegetation contiguous to but more than 50 feet from the top-of-bank of streams and extending to 100 feet from top-of-bank                    | protection (p)                    |
|   | Forest vegetation on steep slopes contiguous to but more than 100 feet from the top-of-bank of streams  | conservation (c)                  |
|   | Forest vegetation contiguous to but more than 100 feet from the top-of-bank of streams  | conservation (c)                  |
| FP37  | Stream channels to top-of-bank  | protection (p)                    |
|   | Land within 50 feet of the top-of-bank of streams   | protection (p)                    |
|   | Forest vegetation contiguous to but more than 50 feet from the top-of-bank of streams and extending to 100 feet from top-of-bank                    | protection (p)                    |
|   | Forest vegetation on steep slopes contiguous to but more than 100 feet from the top-of-bank of streams  | conservation (c)                  |
|   | Forest vegetation contiguous to but more than 100 feet from the top-of-bank of streams  | conservation (c)                  |
| FP38  | Stream channels to top-of-bank  | protection (p)                    |
|   | Land within 50 feet of the top-of-bank of streams   | protection (p)                    |
|   | Forest vegetation contiguous to but more than 50 feet from the top-of-bank of streams and extending to 100 feet from top-of-bank                    | protection (p)                    |
|   | Forest vegetation on steep slopes contiguous to but more than 100 feet from the top-of-bank of streams  | conservation (c)                  |
|   | Forest vegetation contiguous to but more than 100 feet from the top-of-bank of streams  | conservation (c)                  |

| <b>Table 3: Forest Park and Northwest District – Summary of Decisions</b> |  |                                   |
|---|--|-----------------------------------|
| <b>Resource Site</b>  | <b>Natural Resource Feature</b>  | <b>Environmental Overlay Zone</b> |
| FP39  | Stream channels to top-of-bank   | protection (p)                    |
|   | Land within 50 feet of the top-of-bank of streams  | protection (p)                    |
|   | Forest vegetation on steep slopes  | protection (p)                    |
|   | Forest vegetation  | protection (p)                    |
| FP40  | Stream channels to top-of-bank   | protection (p)                    |
|   | Land within 50 feet of the top-of-bank of streams  | protection (p)                    |
|   | Forest vegetation contiguous to but more than 50 feet from the top-of-bank of streams and extending to 100 feet from top-of-bank | protection (p)                    |
|   | Forest vegetation on steep slopes contiguous to but more than 100 feet from the top-of-bank of streams                           | protection (p)                    |
|   | Forest vegetation contiguous to but more than 100 feet from the top-of-bank of streams   | protection (p)                    |
| FP41  | Stream channels to top-of-bank   | protection (p)                    |
|   | Land within 50 feet of the top-of-bank of streams  | protection (p)                    |
|   | Forest vegetation on steep slopes contiguous to but more than 50 feet from the top-of-bank of streams                            | protection (p)                    |
|   | Forest vegetation contiguous to but more than 50 feet from the top-of-bank of streams  | protection (p)                    |

## **G.2. Skyline West**

The Skyline West plan geography, shown in Map 5, includes 10 resource sites and is located generally west of NW Skyline Boulevard, north of W Burnside Road and east of the Portland Urban Service Boundary.

Table 4 summarizes results of the Title 13 process and the application of conservation and protection overlay zones to the natural resource features by resource sites within the Forest Park and Northwest District geography. Additional information is found in Volume 2, Part B and, if there are discrepancies, Volume 2, Part B takes precedence over the summary table.

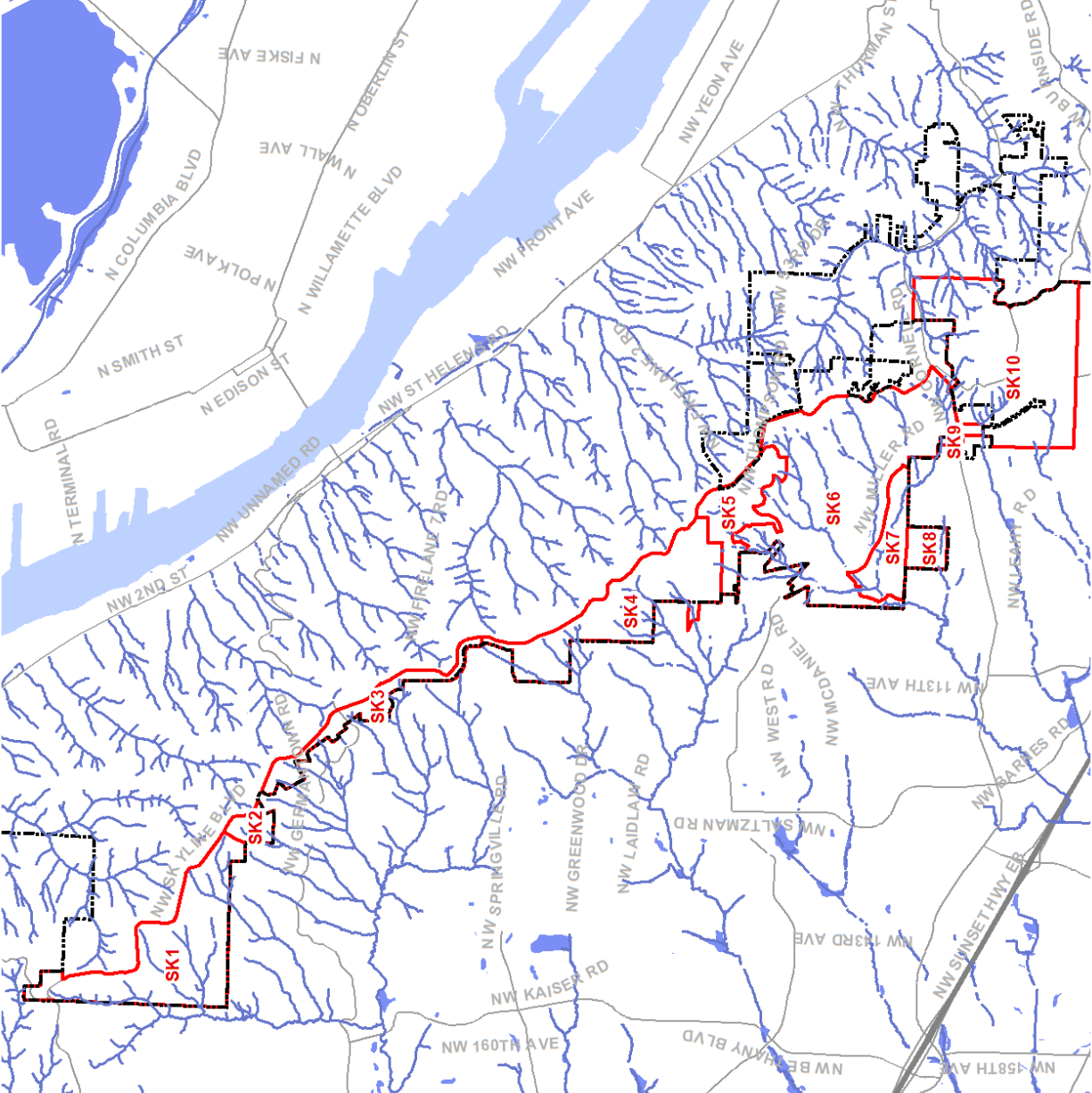
When the table states “land within” a certain distance of a river, stream or wetland the land includes all resources associated with the land including soils, flood area, vegetation and steep slopes, as well as developed land. Yards, decks, buildings, parking, loading, etc. located within that distance are also subject to the overlay zones.



### Environmental Overlay Zone Map Correction Project

#### Skyline West Resource Sites

- Resource Sites
- Streams
- Wetland
- Willamette River
- Streets
- City of Portland



November 2019  
The information on the map was derived from digital databases. Care was taken in the creation of this map but it is provided "as is". The City of Portland ensures meaningful access to city programs, services, and activities to comply with Civil Rights Title VI and ADA. Title VI laws and reasonably provides: translation, interpretation, modifications, accommodations, and/or other services. For more information, visit [http://www.portland.gov/civilrights](#) or request these services, contact 503-823-7700, City TTY: 503-823-6868, Relay Service: 711.  
A north arrow pointing upwards and a scale bar below it, marked from 0 to 0.75 miles.

Map 5: Skyline West Resource Sites

| <b>Table 4: Skyline West – Summary of Decisions</b> |  |                                   |
|---|--|-----------------------------------|
| <b>Resource Site</b>                                | <b>Natural Resource Feature</b>  | <b>Environmental Overlay Zone</b> |
| SK1   | Stream channels to top-of-bank   | protection (p)                    |
|   | Wetlands   | protection (p)                    |
|   | Land within 50 feet of wetlands  | protection (p)                    |
|   | Land within 50 feet of the top-of-bank of streams  | protection (p)                    |
|   | On specific lots (see resource site-specific ESEE decision), forest or woodland vegetation contiguous to but more than 50 feet from the top-of-bank of streams | protection (p)                    |
|   | Forest or woodland vegetation on steep slopes contiguous to but more than 50 feet from the top-of-bank of streams  | conservation (c)                  |
|   | Forest or woodland vegetation contiguous to but more than 50 feet from the top-of-bank of streams  | conservation (c)                  |
| SK2   | Stream channels to top-of-bank   | protection (p)                    |
|   | Wetlands   | protection (p)                    |
|   | Land within 50 feet of wetlands  | protection (p)                    |
|   | Land within 25 feet of the top-of-bank of streams  | protection (p)                    |
|   | Land between 25 feet and 50 feet of the top-of-bank of streams   | conservation (c)                  |
| SK3   | Stream channels to top-of-bank   | protection (p)                    |
|   | Wetlands   | protection (p)                    |
|   | Land within 25 feet of wetlands  | protection (p)                    |
|   | Land between 25 and 50 feet of wetlands  | conservation (c)                  |
|   | Land within 25 feet of the top-of-bank of streams  | protection (p)                    |
|   | Land between 25 and 50 feet of streams   | conservation (c)                  |
|   | Land within 25 feet of a strictly limit ESEE decision  | conservation (c)                  |
|   | Forest vegetation between 50 and 100 feet of top of bank streams   | conservation (c)                  |

| <b>Table 4: Skyline West – Summary of Decisions</b> |  |                                   |
|---|--|-----------------------------------|
| <b>Resource Site</b>                                | <b>Natural Resource Feature</b>  | <b>Environmental Overlay Zone</b> |
| SK4   | Stream channels to top-of-bank   | protection (p)                    |
|   | Wetlands   | protection (p)                    |
|   | Land within 50 feet of wetlands  | protection (p)                    |
|   | Land within 25 feet of the top-of-bank of streams  | protection (p)                    |
|   | On lots zoned OS or RF, land between 25 feet and 50 feet of the top-of-bank of streams   | protection (p)                    |
|   | On lots zoned R10, land between 25 feet and 50 feet of the top-of-bank of streams  | conservation (c)                  |
|   | Forest or woodland vegetation on steep slopes contiguous to but more than 50 feet from the top-of-bank of streams  | conservation (c)                  |
|   | Forest or woodland vegetation contiguous to but more than 50 feet from the top-of-bank of streams  | conservation (c)                  |
| SK5   | Stream channels to top-of-bank   | protection (p)                    |
|   | Wetlands   | protection (p)                    |
|   | Land within 50 feet of wetlands  | protection (p)                    |
|   | Land within 25 feet of the top-of-bank of streams  | protection (p)                    |
|   | Land between 25 feet and 50 feet of the top-of-bank of streams   | conservation (c)                  |
|   | Forest or woodland vegetation contiguous to but more than 50 feet from the top-of-bank of streams  | conservation (c)                  |
|   | Forest or woodland vegetation contiguous to but more than 50 feet from the top-of-bank of streams  | conservation (c)                  |
| SK6   | Stream channels to top-of-bank   | protection (p)                    |
|   | Wetlands   | protection (p)                    |
|   | Land within 50 feet of wetlands  | protection (p)                    |
|   | Land within 50 feet of the top-of-bank of streams  | protection (p)                    |
|   | Forest or woodland vegetation on steep slopes contiguous to but more than 50 feet from the top-of-bank of streams  | conservation (c)                  |
|   | Forest or woodland vegetation contiguous to but more than 50 feet from the top-of-bank of streams  | conservation (c)                  |
|   | On specific lots (see resource site-specific ESEE decision), forest or woodland vegetation contiguous to but more than 50 feet from the top-of-bank of streams | protection (p)                    |



| <b>Table 4: Skyline West – Summary of Decisions</b> |  |                                   |
|---|--|-----------------------------------|
| <b>Resource Site</b>                                | <b>Natural Resource Feature</b>  | <b>Environmental Overlay Zone</b> |
| SK7   | Stream channels to top-of-bank   | protection (p)                    |
|   | Wetlands   | protection (p)                    |
|   | Land within 50 feet of wetlands  | protection (p)                    |
|   | Land within 25 feet of the top-of-bank of streams  | protection (p)                    |
|   | Land between 25 feet and 50 feet of the top-of-bank of streams   | conservation (c)                  |
|   | Forest or woodland vegetation on steep slopes contiguous to but more than 50 feet from the top-of-bank of streams  | conservation (c)                  |
|   | Forest or woodland vegetation contiguous to but more than 50 feet from the top-of-bank of streams  | conservation (c)                  |
| SK8   | Stream channels to top-of-bank   | protection (p)                    |
|   | Wetlands   | protection (p)                    |
|   | Land within 50 feet of wetlands  | protection (p)                    |
|   | Land within 50 feet of the top-of-bank of streams  | protection (p)                    |
|   | Forest or woodland vegetation on steep slopes contiguous to but more than 50 feet from the top-of-bank of streams  | conservation (c)                  |
|   | Forest or woodland vegetation contiguous to but more than 50 feet from the top-of-bank of streams  | conservation (c)                  |
|   | On specific lots (see resource site-specific ESEE decision), forest or woodland vegetation contiguous to but more than 50 feet from the top-of-bank of streams | protection (p)                    |
| SK9   | Stream channels to top-of-bank   | protection (p)                    |
|   | Wetlands   | protection (p)                    |
|   | Land within 50 feet of wetlands  | protection (p)                    |
|   | Land within 50 feet of the top-of-bank of streams  | protection (p)                    |
|   | Forest vegetation contiguous to but more than 50 feet from the top-of-bank of streams and extending to 100 feet from top-of-bank                               | protection (p)                    |
|   | Forest vegetation on steep slopes contiguous to but more than 100 feet from the top-of-bank of streams   | conservation (c)                  |
|   | Forest vegetation contiguous to but more than 100 feet from the top-of-bank of streams   | conservation (c)                  |

| <b>Table 4: Skyline West – Summary of Decisions</b> |  |                                   |
|---|--|-----------------------------------|
| <b>Resource Site</b>                                | <b>Natural Resource Feature</b>  | <b>Environmental Overlay Zone</b> |
| SK10  | Stream channels to top-of-bank   | protection (p)                    |
|   | Wetlands   | protection (p)                    |
|   | Land within 100 feet of wetlands   | protection (p)                    |
|   | Land within 100 feet of the top-of-bank of streams   | protection (p)                    |
|   | Forest vegetation on steep slopes contiguous to but more than 100 feet from the top-of-bank of streams | conservation (c)                  |
|   | Forest vegetation contiguous to but more than 100 feet from the top-of-bank of streams                 | conservation (c)                  |

### **G.3. Tryon Creek and Southwest Hills East**

The Tryon Creek and Southwest Hills East plan geography, shown in Map 6, includes 24 resource sites and is located generally west of NW Skyline Boulevard, north of W Burnside Road and east of the Portland Urban Service Boundary.

Table 5 summarizes results of the analysis presented in Volumes 2 – 4 and the application of conservation and protection overlay zones to the natural resource features by resource sites within the Tryon Creek and Southwest Hills geography. Additional information is found in Volume 2, Part C and, if there are discrepancies, Volume 2, Part C takes precedence over the summary table.

When the table states “land within” a certain distance of a river, stream or wetland the land includes all resources associated with the land including soils, flood area, vegetation and steep slopes, as well as developed land. Yards, decks, buildings, parking, loading, etc. located within that distance are also subject to the overlay zones.

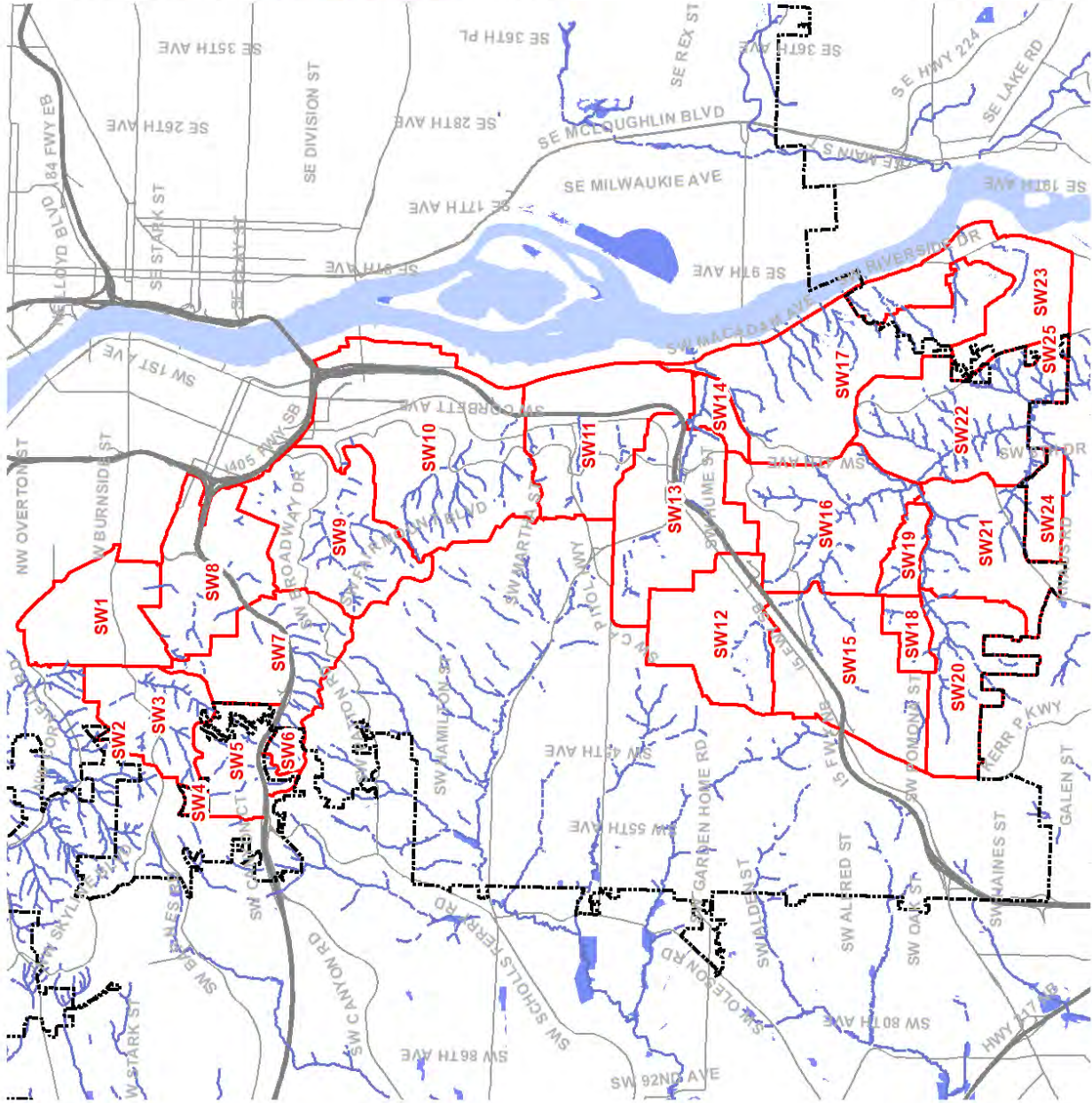
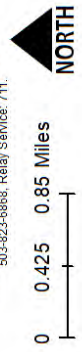


**Environmental Overlay Zone  
Mapping Protocols**

**Tryon Creek and Southwest  
Hills East Resource Sites**

- Resource Sites
- Streams
- Wetland
- Willamette River
- Streets
- City of Portland

November 2019  
The information on this map was derived from digital databases. Care was taken in the creation of this map, but it is provided "as is". The City of Portland ensures meaningful access to city programs, services, and activities to comply with Civil Rights Title VI and ADA. Title II laws and reasonably provides: translation, interpretation, modifications, accommodations, alternative formats, and other services. If you need to request these services, contact 503-823-7700. City, TTY: 503-823-6868. Relay Service: 711.



Map 6: Tryon Creek and Southwest Hills East Resource Sites

| <b>Table 5: Tryon Creek and Southwest Hills East – Summary of Decisions</b> |   |                                   |
|---|---|-----------------------------------|
| <b>Resource Site</b>  | <b>Natural Resource Feature</b>   | <b>Environmental Overlay Zone</b> |
| SW1   | Stream channels to top-of-bank  | protection (p)                    |
|   | Wetlands  | protection (p)                    |
|   | Land within 50 feet of the top-of-bank of streams   | protection (p)                    |
|   | Forest vegetation on steep slopes contiguous to W Burnside Road right-of-way  | conservation (c)                  |
|   | Forest vegetation contiguous to W Burnside Road right-of-way  | conservation (c)                  |
| SW2   | Forest vegetation on steep slopes   | conservation (c)                  |
| SW3   | Stream channels to top-of-bank  | protection (p)                    |
|   | Wetlands  | protection (p)                    |
|   | Land within 50 feet of the top-of-bank of streams   | protection (p)                    |
|   | Inside Pittock Acres Park and Hoyt Arboretum, forest vegetation on steep slopes contiguous to but more than 50 feet from the top-of-bank of streams | protection (p)                    |
|   | Inside Pittock Acres Park and Hoyt Arboretum, forest vegetation contiguous to but more than 50 feet from the top-of-bank of streams                 | protection (p)                    |
| SW4   | Stream channels to top-of-bank  | protection (p)                    |
|   | Land within 50 feet of the top-of-bank of streams   | protection (p)                    |
|   | Forest vegetation contiguous to but more than 50 feet from the top-of-bank of streams and extending to 100 feet from top-of-bank                    | protection (p)                    |
|   | Forest vegetation on steep slopes contiguous to but more than 100 feet from the top-of-bank of streams  | conservation (c)                  |
|   | Forest vegetation contiguous to but more than 100 feet from the top-of-bank of streams  | conservation (c)                  |
| SW5   | Stream channels to top-of-bank  | protection (p)                    |
|   | Wetlands  | protection (p)                    |
|   | Land within 25 feet of the top-of-bank of streams   | protection (p)                    |
|   | Land within 25 feet of the top-of-bank of wetlands  | protection (p)                    |
|   | Land between 25 feet and 50 feet of the top-of-bank of streams  | conservation (c)                  |
|   | Land between 25 feet and 50 feet of the top-of-bank of wetlands   | conservation (c)                  |
|   | Forest vegetation contiguous to but more than 50 feet from the top-of-bank of streams and extending to 100 feet from top-of-bank                    | conservation (c)                  |
|   | Forest vegetation on steep slopes contiguous to but more than 100 feet from top-of-bank   | conservation (c)                  |

| <b>Table 5: Tryon Creek and Southwest Hills East – Summary of Decisions</b> |  |                                   |
|---|--|-----------------------------------|
| <b>Resource Site</b>  | <b>Natural Resource Feature</b>  | <b>Environmental Overlay Zone</b> |
| SW6   | Stream channels to top-of-bank   | protection (p)                    |
|   | Land within 50 feet of the top-of-bank of streams  | protection (p)                    |
|   | Forest vegetation on steep slopes contiguous to but more than 50 feet from the top-of-bank of streams                              | conservation (c)                  |
|   | Forest vegetation contiguous to but more than 50 feet from the top-of-bank of streams  | conservation (c)                  |
| SW7   | Stream channels to top-of-bank   | protection (p)                    |
|   | Land within 50 feet of the top-of-bank of streams  | protection (p)                    |
|   | Forest vegetation on steep slopes contiguous to but more than 50 feet from the top-of-bank of streams                              | conservation (c)                  |
|   | Forest vegetation contiguous to but more than 50 feet from the top-of-bank of streams  | conservation (c)                  |
|   | Forest vegetation in Hoyt Arboretum  | Protection (p)                    |
| SW8   | Stream channels to top-of-bank   | protection (p)                    |
|   | Land within 50 feet of the top-of-bank of streams  | protection (p)                    |
|   | Forest vegetation on steep slopes contiguous to but more than 50 feet from the top-of-bank of streams                              | conservation (c)                  |
|   | Forest vegetation contiguous to but more than 50 feet from the top-of-bank of streams  | conservation (c)                  |
| SW9   | Stream channels to top-of-bank   | protection (p)                    |
|   | Land within 50 feet of the top-of-bank of streams  | protection (p)                    |
|   | In Marquam Hill Park, all forest vegetation  | protection (p)                    |
|   | Outside Marquam Nature Park, forest vegetation on steep slopes contiguous to but more than 50 feet from the top-of-bank of streams | conservation (c)                  |
|   | Outside Marquam Nature Park, forest vegetation contiguous to but more than 50 feet from the top-of-bank of streams                 | conservation (c)                  |
| SW10  | Stream channels to top-of-bank   | protection (p)                    |
|   | Land within 50 feet of the top-of-bank of streams  | protection (p)                    |
|   | Forest vegetation on steep slopes contiguous to and west of SW Terwilliger Blvd right-of-way                                       | protection (p)                    |
|   | Forest vegetation on steep slopes contiguous to but more than 50 feet from the top-of-bank of streams                              | conservation (c)                  |
|   | Forest vegetation on steep slopes contiguous to and east of SW Terwilliger Blvd right-of-way                                       | conservation (c)                  |
|   | Forest vegetation on steep slopes contiguous to SW Barbur Blvd or Interstate 5 right-of-way  | conservation (c)                  |
|   | In the Central Employment (EX) base zone, forest vegetation on steep slopes  | conservation (c)                  |

| <b>Table 5: Tryon Creek and Southwest Hills East – Summary of Decisions</b> |   |                                   |
|---|---|-----------------------------------|
| <b>Resource Site</b>  | <b>Natural Resource Feature</b>   | <b>Environmental Overlay Zone</b> |
| SW11  | Stream channels to top-of-bank  | protection (p)                    |
|   | Land within 50 feet of the top-of-bank of streams   | protection (p)                    |
|   | In George Himes Park, forest vegetation contiguous to but more than 50 feet from the top-of-bank of streams.  | protection (p)                    |
|   | Outside George Himes Park, forest vegetation contiguous to but more than 50 feet from the top-of-bank of streams and extending to 100 feet from top-of-bank | conservation (c)                  |
|   | Forest vegetation on steep slopes contiguous to SW Terwilliger Blvd, SW Barbur Blvd or Interstate 5 right-of-way  | conservation (c)                  |
| SW12  | Stream channels to top-of-bank  | protection (p)                    |
|   | Wetlands  | protection (p)                    |
|   | Land within 25 feet of the top-of-bank of streams   | protection (p)                    |
|   | Land within 50 feet of wetlands   | protection (p)                    |
|   | Land between 25 feet and 50 feet of the top-of-bank of streams  | conservation (c)                  |
|   | Land between 50 feet and 75 feet of the top-of-bank of wetlands   | conservation (c)                  |
| SW13  | Stream channels to top-of-bank  | protection (p)                    |
|   | Wetlands  | protection (p)                    |
|   | Land within 50 feet of the top-of-bank of streams   | protection (p)                    |
|   | Land within 50 feet of wetlands   | protection (p)                    |
|   | Forest vegetation on steep slopes contiguous to but more than 50 feet from the top-of-bank of streams   | conservation (c)                  |
|   | Forest vegetation contiguous to but more than 50 feet from the top-of-bank of streams   | conservation (c)                  |
| SW14  | Stream channels to top-of-bank  | protection (p)                    |
|   | Wetlands  | protection (p)                    |
|   | Land within 50 feet of the top-of-bank of streams   | protection (p)                    |
|   | Land within 50 feet of wetlands   | protection (p)                    |
|   | Forest vegetation on steep slopes contiguous to but more than 50 feet from the top-of-bank of streams   | conservation (c)                  |
|   | Forest vegetation contiguous to but more than 50 feet from the top-of-bank of streams   | conservation (c)                  |
|   | Land within 25 feet of all protection overlay zones   | conservation (c)                  |

| <b>Table 5: Tryon Creek and Southwest Hills East – Summary of Decisions</b> |  |                                   |
|---|--|-----------------------------------|
| <b>Resource Site</b>  | <b>Natural Resource Feature</b>  | <b>Environmental Overlay Zone</b> |
| SW15  | Stream channels to top-of-bank   | protection (p)                    |
|   | Wetlands   | protection (p)                    |
|   | Land within 25 feet of the top-of-bank of streams  | protection (p)                    |
|   | Land within 50 feet of wetlands  | protection (p)                    |
|   | Land between 25 feet and 50 feet of the top-of-bank of streams   | conservation (c)                  |
|   | Land between 50 feet and 75 feet of the top-of-bank of wetlands  | conservation (c)                  |
| SW16  | Stream channels to top-of-bank   | protection (p)                    |
|   | Wetlands   | protection (p)                    |
|   | Land within 50 feet of the top-of-bank of streams  | protection (p)                    |
|   | Land within 50 feet of wetlands  | protection (p)                    |
|   | In Marshall Park, forest vegetation contiguous to but more than 50 feet from the top-of-bank of streams                      | protection (p)                    |
|   | Outside Marshall Park, forest vegetation on steep slopes contiguous to but more than 50 feet from the top-of-bank of streams | conservation (c)                  |
|   | Outside Marshall Park, forest vegetation contiguous to but more than 50 feet from the top-of-bank of streams                 | conservation (c)                  |
|   | Land between 50 and 25 feet of streams and wetlands  | conservation (c)                  |



| <b>Table 5: Tryon Creek and Southwest Hills East – Summary of Decisions</b> |   |                                   |
|---|---|-----------------------------------|
| <b>Resource Site</b>  | <b>Natural Resource Feature</b>   | <b>Environmental Overlay Zone</b> |
| SW17  | Stream channels to top-of-bank  | protection (p)                    |
|   | Wetlands  | protection (p)                    |
|   | Land within 50 feet of the top-of-bank of streams   | protection (p)                    |
|   | Land within 50 feet of wetlands   | protection (p)                    |
|   | In River View Natural Area, forest vegetation on steep slopes (25%) contiguous to but more than 50 feet from the top-of-bank of streams           | protection (p)                    |
|   | In River View Natural Area, forest vegetation contiguous to but more than 50 feet from stream top-of-bank of streams on slopes that are not steep | conservation (c)                  |
|   | Outside River View Natural Area, forest vegetation on steep slopes contiguous to but more than 50 feet from the top-of-bank of streams            | conservation (c)                  |
|   | Outside River View Natural Area, forest vegetation contiguous to but more than 50 feet from the top-of-bank of streams                            | conservation (c)                  |
|   | Land within 25 feet of the protection overlay zone  | conservation (c)                  |
| SW18  | Stream channels to top-of-bank  | protection (p)                    |
|   | Wetlands  | protection (p)                    |
|   | Land within 50 feet of the top-of-bank of streams   | protection (p)                    |
|   | Land within 50 feet of wetlands   | protection (p)                    |
|   | Forest vegetation on steep slopes contiguous to but more than 50 feet from the top-of-bank of streams or top-of-bank wetlands                     | conservation (c)                  |
|   | Forest vegetation contiguous to but more than 50 feet from the top-of-bank of streams   | conservation (c)                  |
|   | Forest vegetation contiguous to but more than 50 feet from the top-of-bank of wetlands  | conservation (c)                  |
| SW19  | Stream channels to top-of-bank  | protection (p)                    |
|   | Land within 50 feet of the top-of-bank of streams   | protection (p)                    |
|   | Forest vegetation on steep slopes contiguous to but more than 50 feet from the top-of-bank of streams   | conservation (c)                  |
|   | Forest vegetation contiguous to but more than 50 feet from the top-of-bank of streams   | conservation (c)                  |

| <b>Table 5: Tryon Creek and Southwest Hills East – Summary of Decisions</b> |  |                                   |
|---|--|-----------------------------------|
| <b>Resource Site</b>  | <b>Natural Resource Feature</b>  | <b>Environmental Overlay Zone</b> |
| SW20  | Stream channels to top-of-bank   | protection (p)                    |
|   | Wetlands   | protection (p)                    |
|   | Land within 50 feet of the top-of-bank of streams  | protection (p)                    |
|   | Land within 50 feet of wetlands  | protection (p)                    |
|   | Forest vegetation on steep slopes contiguous to but more than 50 feet from the top-of-bank of streams                            | conservation (c)                  |
|   | Forest vegetation contiguous to but more than 50 feet from the top-of-bank of wetlands   | conservation (c)                  |
| SW21  | Stream channels to top-of-bank   | protection (p)                    |
|   | Wetlands   | protection (p)                    |
|   | Land within 50 feet of the top-of-bank of streams  | protection (p)                    |
|   | Land within 50 feet of wetlands  | protection (p)                    |
|   | Forest vegetation on steep slopes contiguous to but more than 50 feet from the top-of-bank of streams                            | conservation (c)                  |
|   | Forest vegetation contiguous to but more than 50 feet from the top-of-bank of wetlands   | conservation (c)                  |
| SW22  | Stream channels to top-of-bank   | protection (p)                    |
|   | Wetlands   | protection (p)                    |
|   | Land within 50 feet of the top-of-bank of streams  | protection (p)                    |
|   | Land within 50 feet of wetlands  | protection (p)                    |
|   | In Tryon Creek State Park, forest vegetation on steep slopes contiguous to but more than 50 feet from the top-of-bank of streams | protection (p)                    |
|   | In Tryon Creek State Park, forest vegetation contiguous to but more than 50 feet from the top-of-bank of streams                 | protection (p)                    |
|   | Outside Tryon Creek State Park, forest vegetation on steep slopes contiguous to Tryon Creek State Park                           | conservation (c)                  |
|   | Outside Tryon Creek State Park, forest vegetation contiguous to Tryon Creek State Park   | conservation (c)                  |
|   | Forest vegetation contiguous to SW Terwilliger Boulevard right-of-way  | conservation (c)                  |

| <b>Table 5: Tryon Creek and Southwest Hills East – Summary of Decisions</b> |  |                                   |
|---|--|-----------------------------------|
| <b>Resource Site</b>  | <b>Natural Resource Feature</b>  | <b>Environmental Overlay Zone</b> |
| SW23  | Stream channels to top-of-bank   | protection (p)                    |
|   | Land within 25 feet of the top-of-bank of streams  | protection (p)                    |
|   | Land between 25 feet and 50 feet of the top-of-bank of streams   | conservation (c)                  |
|   | In River View Natural Area, all vegetation on steep slopes contiguous to but more than 50 feet from the top-of-bank of streams | conservation (c)                  |
|   | In River View Natural Area, all vegetation contiguous to but more than 50 feet from the top-of-bank of streams                 | conservation (c)                  |
|   | Forest vegetation on steep slopes that is contiguous to SW Terwilliger Blvd right-of-way                                       | conservation (c)                  |
|   | In Special Habitat Area W19, oak habitat   | conservation (c)                  |

## **G.4. Fanno Creek**

The Fanno Creek plan geography, shown in Map 7, includes 13 resource sites and includes the Fanno Creek watershed in Portland.

Table 6 summarizes results of the analysis presented in Volumes 2 – 4 and the application of conservation and protection overlay zones to the natural resource features by resource sites within the Fanno Creek geography. Additional information is found in Volume 2, Part D and, if there are discrepancies, Volume 2, Part D takes precedence over the summary table.

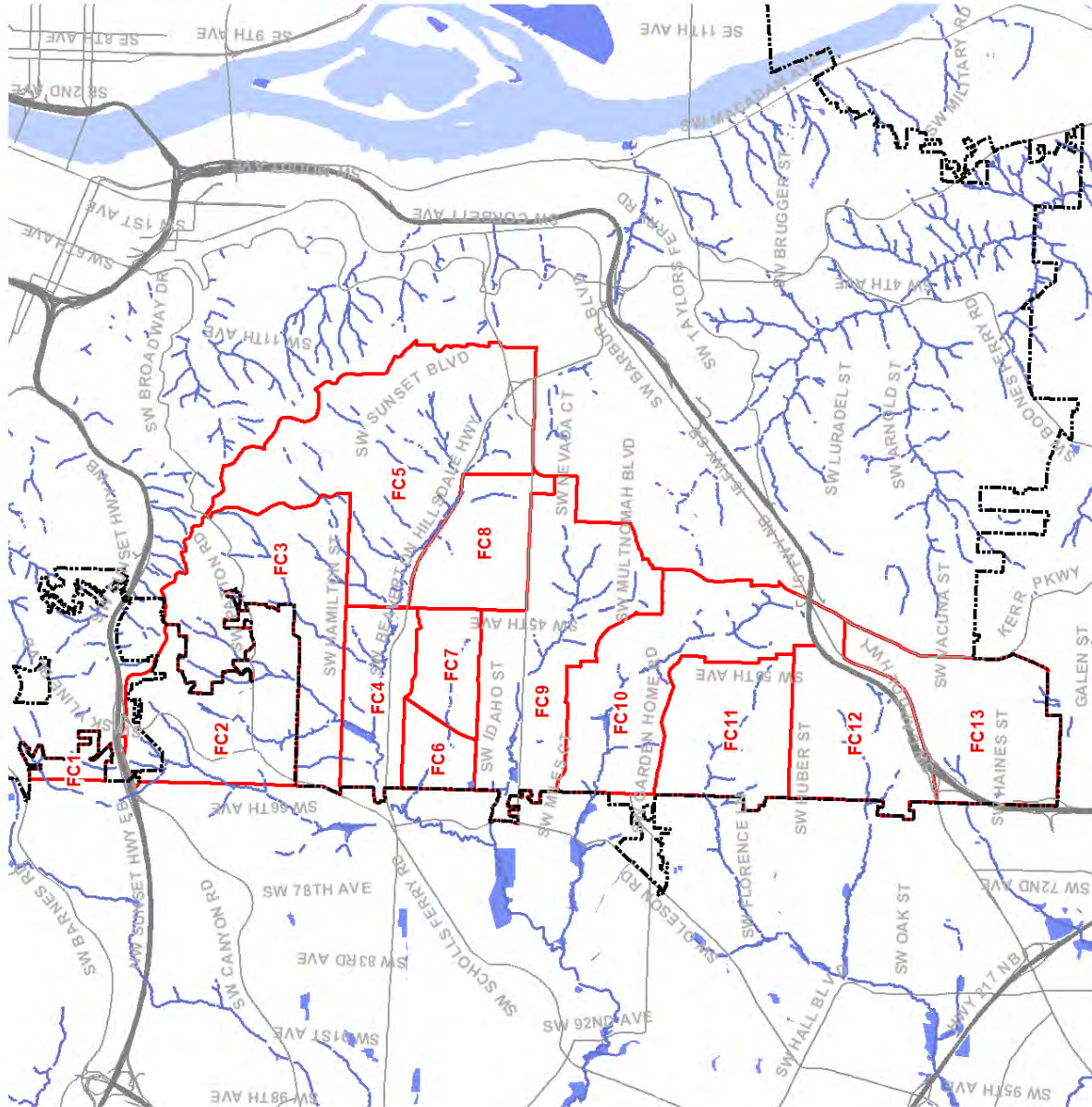
When the table states “land within” a certain distance of a river, stream or wetland the land includes all resources associated with the land including soils, flood area, vegetation and steep slopes, as well as developed land. Yards, decks, buildings, parking, loading, etc. located within that distance are also subject to the overlay zones.



**Environmental Overlay Zone  
Map Correction Project**

**Fanno Creek Resource Sites**

- Resource Sites
- Streams
- Wetland
- Willamette River
- Streets
- City of Portland



November 2019  
The information on the map was derived from digital databases. Care was taken in the creation of this map, but it is provided "as is". The City of Portland ensures meaningful access to city programs, services, and activities to comply with Civil Rights laws. If you need alternative formats, accommodations, translation, interpretation, modifications, accommodations, alternative formats, auxiliary aids and services. To request these services, contact 503-823-7700, City TTY: 503-823-6868, Relay Service: 711.



Map 7: Fanno Creek Resource Sites

| <b>Table 6: Fanno Creek – Summary of Decisions</b> |  |                                   |
|--|--|-----------------------------------|
| <b>Resource Site</b>                               | <b>Natural Resource Feature</b>  | <b>Environmental Overlay Zone</b> |
| FC1  | Stream channels to top-of-bank   | protection (p)                    |
|  | Land within 50 feet of the top-of-bank of streams  | protection (p)                    |
|  | Forest vegetation contiguous to but more than 50 feet from the top-of-bank of streams and extending to 100 feet from top-of-bank | protection (p)                    |
|  | Forest vegetation contiguous to but more than 100 feet from the top-of-bank of streams   | conservation (c)                  |
|  | Forest vegetation on steep slopes contiguous to but more than 50 feet from wetlands  | conservation (c)                  |
|  | Forest vegetation contiguous to but more than 50 feet from wetlands  | conservation (c)                  |
| FC2  | Stream channels to top-of-bank   | protection (p)                    |
|  | Wetlands   | protection (p)                    |
|  | Land within 50 feet of the top-of-bank of streams  | protection (p)                    |
|  | Land within 50 feet of wetlands  | protection (p)                    |
|  | Forest vegetation between 50 and 100 feet of top-of-bank streams   | protection (p)                    |
|  | Forest vegetation on steep slopes contiguous to but more than 100 feet from the top-of-bank of streams                           | conservation (c)                  |
|  | Forest vegetation contiguous to but more than 100 feet from the top-of-bank of streams   | conservation (c)                  |
| FC3  | Stream channels to top-of-bank   | protection (p)                    |
|  | Wetlands   | protection (p)                    |
|  | Land within 50 feet of the top-of-bank of streams  | protection (p)                    |
|  | Land within 50 feet of wetlands  | protection (p)                    |
|  | Forest vegetation contiguous to but more than 50 feet from the top-of-bank of streams extending to 200 feet from top of bank     | conservation (c)                  |
| FC4  | Stream channels to top-of-bank   | protection (p)                    |
|  | Wetlands   | protection (p)                    |
|  | Land within 25 feet of the top-of-bank of streams  | protection (p)                    |
|  | Land within 50 feet of wetlands  | protection (p)                    |
|  | Land between 25 feet and 50 feet of the top-of-bank of streams   | conservation (c)                  |

| <b>Table 6: Fanno Creek – Summary of Decisions</b> |   |                                   |
|--|---|-----------------------------------|
| <b>Resource Site</b>                               | <b>Natural Resource Feature</b>   | <b>Environmental Overlay Zone</b> |
| FC5  | Stream channels to top-of-bank  | protection (p)                    |
|  | Wetlands  | protection (p)                    |
|  | Land within 50 feet of the top-of-bank of streams   | protection (p)                    |
|  | Land within 50 feet of wetlands   | protection (p)                    |
|  | In Council Crest Park, all forest vegetation  | protection (p)                    |
|  | Outside Council Crest Park, forest vegetation on steep slopes contiguous to but more than 50 feet from the top-of-bank of streams | conservation (c)                  |
|  | Outside Council Crest Park, forest vegetation contiguous to but more than 50 feet from the top-of-bank of streams                 | conservation (c)                  |
| FC6  | Stream channels to top-of-bank  | protection (p)                    |
|  | Wetlands  | protection (p)                    |
|  | Land within 50 feet of the top-of-bank of streams   | protection (p)                    |
|  | Land within 50 feet of wetlands   | protection (p)                    |
|  | Forest vegetation on steep slopes contiguous to but more than 50 feet from the top-of-bank of streams                             | conservation (c)                  |
|  | Forest vegetation contiguous to but more than 50 feet from the top-of-bank of streams   | conservation (c)                  |
|  | Forest or woodland vegetation within the abandoned rail corridor  | conservation (c)                  |
| FC7  | Stream channels to top-of-bank  | protection (p)                    |
|  | Wetlands  | protection (p)                    |
|  | Land within 25 feet of the top-of-bank of streams   | protection (p)                    |
|  | Land within 50 feet of wetlands   | protection (p)                    |
|  | Land between 25 feet and 50 feet of the top-of-bank of streams  | conservation (c)                  |
|  | Forest or woodland vegetation within the abandoned rail corridor  | conservation (c)                  |

| <b>Table 6: Fanno Creek – Summary of Decisions</b> |  |                                   |
|--|--|-----------------------------------|
| <b>Resource Site</b>                               | <b>Natural Resource Feature</b>  | <b>Environmental Overlay Zone</b> |
| FC8  | Stream channels to top-of-bank   | protection (p)                    |
|  | Wetlands   | protection (p)                    |
|  | Land within 50 feet of the top-of-bank of streams  | protection (p)                    |
|  | Land within 50 feet of wetlands  | protection (p)                    |
|  | Forest vegetation on steep slopes contiguous to but more than 50 feet from the top-of-bank of streams  | conservation (c)                  |
|  | Forest vegetation contiguous to but more than 50 feet from the top-of-bank of streams  | conservation (c)                  |
|  | Forest vegetation on steep slopes along SW Fairvale Dr   | conservation (c)                  |
| FC9  | Stream channels to top-of-bank   | protection (p)                    |
|  | Wetlands   | protection (p)                    |
|  | Land within 50 feet of the top-of-bank of streams  | protection (p)                    |
|  | Land within 50 feet of wetlands  | protection (p)                    |
|  | Forest vegetation contiguous to but more than 50 feet from the top-of-bank of streams and extending to 100 feet from top-of-bank                                     | protection (p)                    |
|  | Forest vegetation on steep slopes contiguous to but more than 100 feet from the top-of-bank of streams   | conservation (c)                  |
|  | Forest vegetation contiguous to but more than 100 feet from the top-of-bank of streams   | conservation (c)                  |
| FC10   | Stream channels to top-of-bank   | protection (p)                    |
|  | Wetlands   | protection (p)                    |
|  | Land within 50 feet of the top-of-bank of streams  | protection (p)                    |
|  | Land within 50 feet of wetlands  | protection (p)                    |
|  | In Woods Memorial Nature Area, all forest vegetation   | protection (p)                    |
|  | Outside Woods Memorial Nature Area, forest vegetation contiguous to but more than 50 feet from the top-of-bank of streams and extending to 100 feet from top-of-bank | protection (p)                    |
|  | Outside Woods Memorial Nature Area, forest vegetation on steep slopes contiguous to but more than 100 feet from the top-of-bank of streams                           | conservation (c)                  |
|  | Outside Woods Memorial Nature Area, forest vegetation contiguous to but more than 100 feet from the top-of-bank of streams   | conservation (c)                  |



| <b>Table 6: Fanno Creek – Summary of Decisions</b> |   |                                   |
|--|---|-----------------------------------|
| <b>Resource Site</b>                               | <b>Natural Resource Feature</b>   | <b>Environmental Overlay Zone</b> |
| FC11   | Stream channels to top-of-bank  | protection (p)                    |
|  | Wetlands  | protection (p)                    |
|  | Land within 50 feet of the top-of-bank of streams   | protection (p)                    |
|  | Land within 50 feet of wetlands   | protection (p)                    |
|  | Forest vegetation on steep slopes contiguous to but more than 50 feet from the top-of-bank of streams | conservation (c)                  |
|  | Forest vegetation contiguous to but more than 50 feet from the top-of-bank of streams                 | conservation (c)                  |
| FC12   | Stream channels to top-of-bank  | protection (p)                    |
|  | Wetlands  | protection (p)                    |
|  | Land within 50 feet of the top-of-bank of streams   | protection (p)                    |
|  | Land within 50 feet of wetlands   | protection (p)                    |
|  | Forest vegetation on steep slopes contiguous to but more than 50 feet from the top-of-bank of streams | conservation (c)                  |
|  | Forest vegetation contiguous to but more than 50 feet from the top-of-bank of streams                 | conservation (c)                  |
| FC13   | Stream channels to top-of-bank  | protection (p)                    |
|  | Wetlands  | protection (p)                    |
|  | Land within 50 feet of the top-of-bank of streams   | protection (p)                    |
|  | Land within 25 feet of wetlands   | protection (p)                    |
|  | Land between 25 feet and 50 feet of wetlands  | conservation (c)                  |
|  | Forest vegetation on steep slopes contiguous to but more than 50 feet from the top-of-bank of streams | conservation (c)                  |
|  | Forest vegetation contiguous to but more than 50 feet from the top-of-bank of streams                 | conservation (c)                  |
|  | Forest vegetation contiguous to but more than 50 feet from wetlands                                   | conservation (c)                  |
|  | Specific large patches of forest vegetation (see resource site-specific ESEE decision)                | conservation (c)                  |

## **G.5. East Buttes and Terraces**

The East Buttes and Terraces plan geography, shown in Map 8, includes 15 resource sites in outer east Portland between SE Powell Boulevard and NE Columbia Boulevard.

Table 7 summarizes results of the analysis presented in Volumes 2 – 4 and the application of conservation and protection overlay zones to the natural resource features by resource sites within the East Buttes and Terraces geography. Additional information is found in Volume 2, Part E and, if there are discrepancies, Volume 2, Part E takes precedence over the summary table.

When the table states “land within” a certain distance of a river, stream or wetland the land includes all resources associated with the land including soils, flood area, vegetation and steep slopes, as well as developed land. Yards, decks, buildings, parking, loading, etc. located within that distance are also subject to the overlay zones.

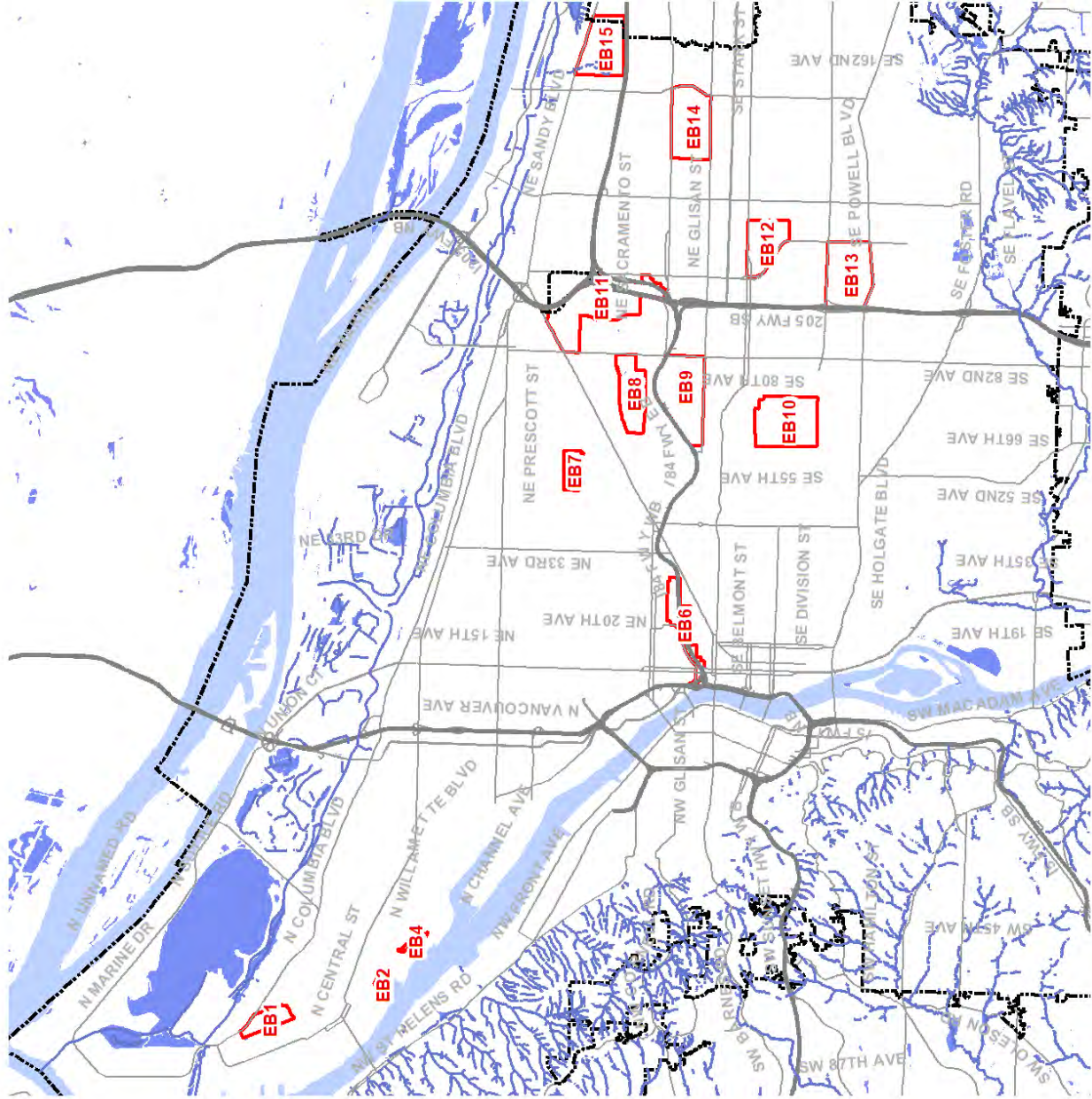
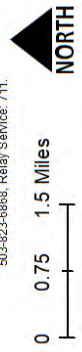


**Environmental Overlay Zone  
Map Correction Project**

**East Buttes and Terraces  
Resource Sites**

- Resource Sites
- Streams
- Wetland
- Willamette River
- Streets
- City of Portland

November 2019  
The information on this map was derived from digital databases. Care was taken in the creation of this map, but it is provided "as is". The City of Portland ensures meaningful access to city programs, services, and activities to comply with Civil Rights Title VI and ADA. Title II laws and reasonably provides: translation, interpretation, modifications, accommodations, alternative formats, and other services. If you need these services, contact 503-823-7700. City, TTY: 503-823-6888, Relay Service: 711.



Map 8: East Buttes and Terraces Resource Sites

| <b>Table 7: East Buttes and Terraces – Summary of Decisions</b> |  |                                   |
|---|--|-----------------------------------|
| <b>Resource Site</b>  | <b>Natural Resource Feature</b>  | <b>Environmental Overlay Zone</b> |
| EB1   | Wetlands   | protection (p)                    |
|   | Forest and woodland vegetation on steep slopes contiguous to wetlands  | conservation (c)                  |
|   | Forest and woodland vegetation contiguous to wetlands  | conservation (c)                  |
| EB2   | Forest and woodland vegetation (see resource site-specific ESEE decision)  | conservation (c)                  |
|   | In Special Habitat Area W4, all land   | conservation (c)                  |
| EB3   | <i>Resource Site EB3 is outside the scope of this project. Please refer to the East Buttes, Terraces and Wetlands Conservation Plan.</i> |                                   |
| EB4   | Forest and woodland vegetation (see resource site-specific ESEE decision)  | conservation (c)                  |
|   | In Special Habitat Area W3.E and W3.F, all land  | conservation (c)                  |
| EB5   | <i>Resource Site EB5 is outside the scope of this project. Please refer to the East Buttes, Terraces and Wetlands Conservation Plan.</i> |                                   |
| EB6   | Areas designated as Special Habitat Areas  | conservation (c)                  |
| EB7   | <i>There are no significant natural resources in Resource Site EB7.</i>  |                                   |
| EB8   | Wetlands   | protection (p)                    |
|   | Land within 25 feet of wetlands  | protection (p)                    |
|   | Land between 25 feet and 50 feet of wetlands   | conservation (c)                  |
|   | Forest and woodland vegetation on steep slopes   | conservation (c)                  |
|   | Forest and woodland vegetation   | conservation (c)                  |
| EB9   | Forest vegetation on steep slopes  | conservation (c)                  |
| EB10  | Forest vegetation on steep slopes  | conservation (c)                  |
| EB11  | Slopes greater than 40% in steepness   | protection (p)                    |
|   | Forest vegetation on steep slopes  | conservation (c)                  |
|   | Forest vegetation  | conservation (c)                  |

| <b>Table 7: East Buttes and Terraces – Summary of Decisions</b> |   |                                   |
|---|---|-----------------------------------|
| <b>Resource Site</b>  | <b>Natural Resource Feature</b>   | <b>Environmental Overlay Zone</b> |
| EB12  | Forest vegetation on not steep slopes   | conservation (c)                  |
| EB13  | Forest vegetation on steep slopes   | protection (p)                    |
|   | Forest vegetation on not steep slopes   | conservation (c)                  |
| EB14  | Approximately 5-acre area of forest vegetation along the western edge of the golf course  | conservation (c)                  |
| EB15  | Stream channels to top-of-bank  | protection (p)                    |
|   | Wetlands  | protection (p)                    |
|   | Land within 25 feet of the top-of-bank of streams or wetlands   | protection (p)                    |
|   | Land between 25 feet and 50 feet of the top-of-bank of streams or wetlands  | conservation (c)                  |
|   | Forest vegetation on steep slopes contiguous to but more than 50 feet from the top-of-bank of streams or wetlands                         | conservation (c)                  |
|   | Forest vegetation contiguous to but more than 50 feet from the top-of-bank of streams or wetlands   | conservation (c)                  |
|   | Forest vegetation (see site-specific ESEE)  | conservation (c)                  |
| EB16  | <i>Resource Site EB16 is outside the scope of this project. Please refer to the East Buttes, Terraces and Wetlands Conservation Plan.</i> |                                   |

## G.6. Johnson Creek

The Johnson Creek plan geography, shown in Map 9, includes 25 resource sites generally located between the Willamette River Greenway and the Urban Services Boundary south of SE Powell Boulevard.

Table 8 summarizes results of the analysis presented in Volumes 2 – 4 and the application of conservation and protection overlay zones to the natural resource features by resource sites within the Johnson Creek geography. Additional information is found in Volume 2, Part F and, if there are discrepancies, Volume 2, Part F takes precedence over the summary table.

When the table states “land within” a certain distance of a river, stream or wetland the land includes all resources associated with the land including soils, flood area, vegetation and steep slopes, as well as developed land. Yards, decks, buildings, parking, loading, etc. located within that distance are also subject to the overlay zones.



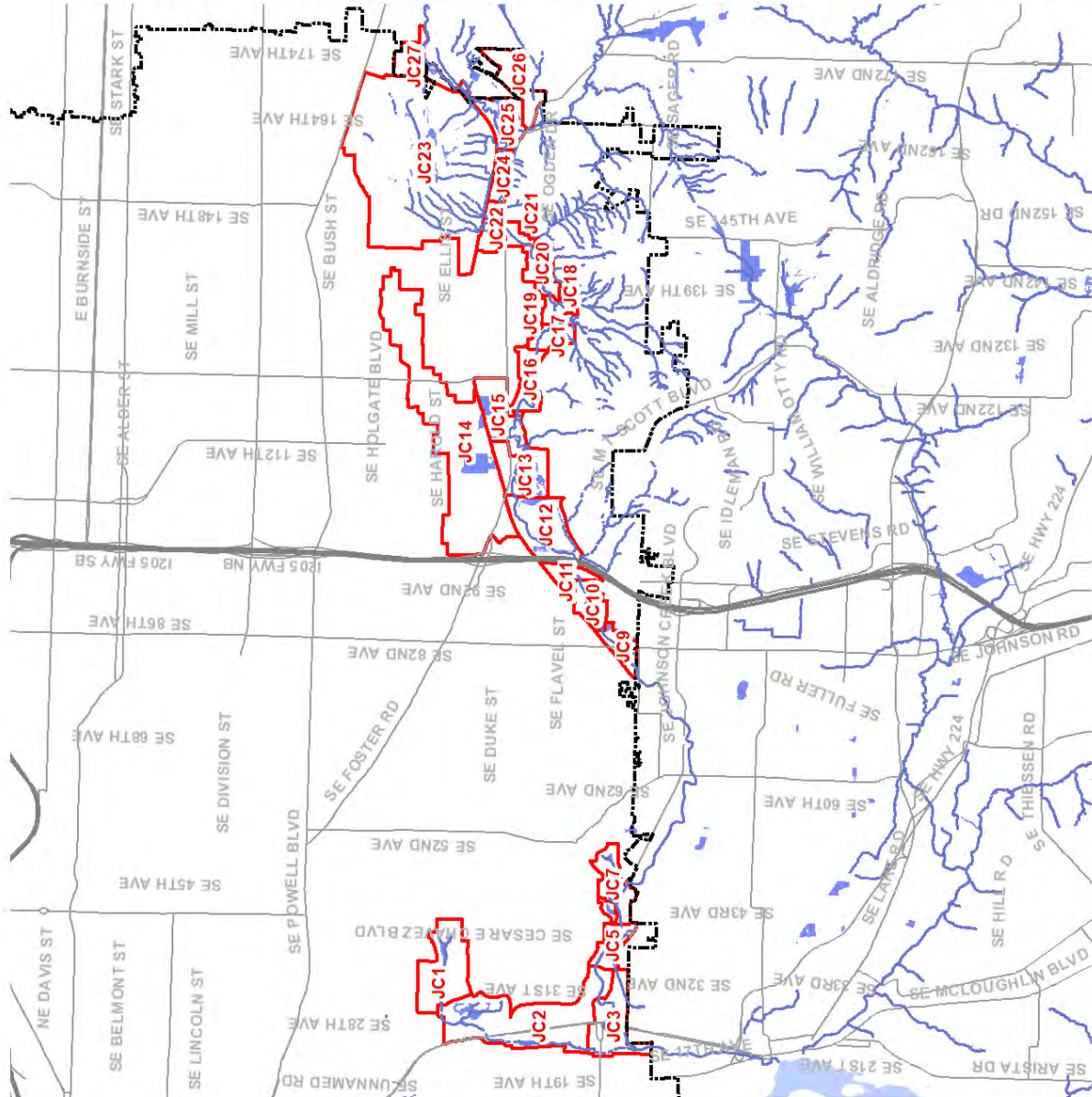
Bureau of Planning and Sustainability  
Innovation. Collaboration. Practical Solutions.  
City of Portland, Oregon

**Environmental Overlay Zone  
Map Correction Project**

**Johnson Creek Resource Sites**

- Resource Sites
- Streams
- Wetland
- Willamette River
- Streets
- City of Portland

November 2019  
The information on the map was derived from digital databases. Care was taken in the creation of this map, but it is provided "as is". The City of Portland ensures meaningful access to city programs, services, and activities to comply with Civil Rights laws. If you need alternative formats, accommodations, translation, interpretation, modifications, accommodations, alternative formats, auxiliary aids and services. To request these services, contact 503-823-7700, City TTY: 503-823-6868, Relay Service: 711.



Map 9: Johnson Creek Resource Sites

| <b>Table 8: Johnson Creek – Summary of Decisions</b> |   |                                   |
|--|---|-----------------------------------|
| <b>Resource Site</b>                                 | <b>Natural Resource Feature</b>   | <b>Environmental Overlay Zone</b> |
| JC1  | Stream channel to top-of-bank   | protection (p)                    |
|  | Wetlands  | protection (p)                    |
|  | Land within 50 feet of the top-of-bank of streams   | protection (p)                    |
|  | Land within 30 feet of wetlands   | protection (p)                    |
|  | Forest or woodland vegetation on steep slopes contiguous to but more than 50 feet from the top-of-bank of streams | conservation (c)                  |
|  | Forest or woodland vegetation contiguous to but more than 50 feet from the top-of-bank of streams                 | conservation (c)                  |
|  | Forest or woodland vegetation contiguous to but more than 30 feet from wetlands                                   | conservation (c)                  |
| JC2  | Stream channel to top-of-bank   | protection (p)                    |
|  | Wetlands  | protection (p)                    |
|  | Land within 50 feet of the top-of-bank of streams   | protection (p)                    |
|  | Land within 30 feet of wetlands   | protection (p)                    |
|  | Forest or woodland vegetation on steep slopes contiguous to but more than 50 feet from the top-of-bank of streams | conservation (c)                  |
|  | Forest or woodland vegetation contiguous to but more than 50 feet from the top-of-bank of streams                 | conservation (c)                  |
|  | Forest or woodland vegetation contiguous to but more than 30 feet from wetlands                                   | conservation (c)                  |
|  | Remaining vegetation within public parks  | conservation (c)                  |
|  | Forest or woodland vegetation contiguous to but outside of public parks   | conservation (c)                  |
| JC3  | Stream channel to top-of-bank   | protection (p)                    |
|  | Wetlands  | protection (p)                    |
|  | Land within 40 feet of the top-of-bank of streams   | protection (p)                    |
|  | Land within 30 feet of wetlands   | protection (p)                    |
|  | Forest or woodland vegetation on steep slopes contiguous to but more than 40 feet from the top-of-bank of streams | conservation (c)                  |
|  | Forest or woodland vegetation contiguous to but more than 40 feet from the top-of-bank of streams                 | conservation (c)                  |
|  | Remaining vegetation within public parks  | conservation (c)                  |
|  | Forest or woodland vegetation contiguous to but outside of public parks   | conservation (c)                  |



| <b>Table 8: Johnson Creek – Summary of Decisions</b> |   |                                   |
|--|---|-----------------------------------|
| <b>Resource Site</b>                                 | <b>Natural Resource Feature</b>   | <b>Environmental Overlay Zone</b> |
| JC4  | <i>Resource Site 4 is located outside of the Urban Service Boundary</i>   |                                   |
| JC5  | Stream channel to top-of-bank   | protection (p)                    |
|  | Wetlands  | protection (p)                    |
|  | Land within 50 feet of the top-of-bank of streams   | protection (p)                    |
|  | Land within 30 feet of wetlands   | protection (p)                    |
|  | Forest or woodland vegetation on steep slopes contiguous to but more than 50 feet from the top-of-bank of streams | conservation (c)                  |
|  | Forest or woodland vegetation contiguous to but more than 50 feet from the top-of-bank of streams                 | conservation (c)                  |
|  | Forest or woodland vegetation contiguous to but more than 30 feet from wetlands                                   | conservation (c)                  |
|  | Remaining vegetation within public parks  | conservation (c)                  |
|  | Vegetation contiguous to but outside of public parks  | conservation (c)                  |
| JC6  | Stream channel to top-of-bank   | protection (p)                    |
|  | Wetlands  | protection (p)                    |
|  | Land within 50 feet of the top-of-bank of streams   | protection (p)                    |
|  | Land within 30 feet of wetlands   | protection (p)                    |
|  | Forest or woodland vegetation on steep slopes contiguous to but more than 50 feet from top-of-bank of streams     | conservation (c)                  |
|  | Forest or woodland vegetation contiguous to but more than 50 feet from top-of-bank of streams                     | conservation (c)                  |
|  | Forest or woodland vegetation contiguous to but more than 30 feet from wetlands                                   | conservation (c)                  |
| JC7  | Stream channel to top-of-bank   | protection (p)                    |
|  | Wetlands  | protection (p)                    |
|  | Land within 50 feet of the top-of-bank of streams   | protection (p)                    |
|  | Land within 30 feet of wetlands   | protection (p)                    |
|  | Forest or woodland vegetation on steep slopes contiguous to but more than 50 feet from top-of-bank of streams     | conservation (c)                  |
|  | Forest or woodland vegetation contiguous to but more than 50 feet from top-of-bank of streams                     | conservation (c)                  |
|  | Forest or woodland vegetation contiguous to but more than 30 feet from wetlands                                   | conservation (c)                  |

| <b>Table 8: Johnson Creek – Summary of Decisions</b> |  |                                   |
|--|--|-----------------------------------|
| <b>Resource Site</b>                                 | <b>Natural Resource Feature</b>  | <b>Environmental Overlay Zone</b> |
| JC8  | <i>Resource Site 8 is located outside of the Urban Service Boundary</i>  |                                   |
| JC9  | Stream channel to top-of-bank  | protection (p)                    |
|  | Wetlands   | protection (p)                    |
|  | Land within 50 feet of the top-of-bank of streams  | protection (p)                    |
|  | Land within 30 feet of wetlands  | protection (p)                    |
|  | Forest or woodland vegetation on steep slopes contiguous to but more than 50 feet from top-of-bank of streams      | conservation (c)                  |
|  | Forest or woodland vegetation contiguous to but more than 50 feet from top-of-bank of streams                      | conservation (c)                  |
|  | Forest or woodland vegetation contiguous to but more than 30 feet from wetlands                                    | conservation (c)                  |
|  | Land within 25 feet of natural resources with a strictly limit ESEE decision                                       | conservation (c)                  |
| JC10   | Stream channel to top-of-bank  | protection (p)                    |
|  | Wetlands   | protection (p)                    |
|  | Land within 100 feet of the top-of-bank of streams   | protection (p)                    |
|  | Land within 30 feet of wetlands  | protection (p)                    |
|  | Forest or woodland vegetation on steep slopes contiguous to but more than 100 feet from the top-of-bank of streams | conservation (c)                  |
|  | Forest or woodland vegetation contiguous to but more than 100 feet from the top-of-bank of streams                 | conservation (c)                  |
|  | Forest or woodland vegetation contiguous to but more than 30 feet from wetlands                                    | conservation (c)                  |
|  | Remaining vegetation within public parks   | conservation (c)                  |
|  | Forest and woodland vegetation contiguous to public parks  | conservation (c)                  |
|  | Land within 25 feet of natural resources with a strictly limit ESEE decision                                       | conservation (c)                  |

| <b>Table 8: Johnson Creek – Summary of Decisions</b> |   |                                   |
|--|---|-----------------------------------|
| <b>Resource Site</b>                                 | <b>Natural Resource Feature</b>   | <b>Environmental Overlay Zone</b> |
| JC11   | Stream channel to top-of-bank   | protection (p)                    |
|  | Wetlands  | protection (p)                    |
|  | Land within 50 feet of the top-of-bank of streams   | protection (p)                    |
|  | Land within 30 feet of wetlands   | protection (p)                    |
|  | Forest or woodland vegetation on steep slopes contiguous to but more than 50 feet from the top-of-bank of streams | conservation (c)                  |
|  | Forest or woodland vegetation contiguous to but more than 50 feet from the top-of-bank of streams                 | conservation (c)                  |
|  | Forest or woodland vegetation contiguous to but more than 30 feet from wetlands                                   | conservation (c)                  |
|  | Land within 25 feet of natural resources with a strictly limit ESEE decision                                      | conservation (c)                  |
| JC12   | Stream channel to top-of-bank   | protection (p)                    |
|  | Wetlands  | protection (p)                    |
|  | Land within 25 feet of the top-of-bank of streams   | protection (p)                    |
|  | Land within 25 feet of wetlands   | protection (p)                    |
|  | Land between 25 and 75 feet of Johnson Creek top of bank  | conservation (c)                  |
|  | Land between 25 of 50 feet of other streams or wetlands   | conservation (c)                  |
|  | Forest or woodland vegetation contiguous to but more than 75 feet Johnson Creek                                   | conservation (c)                  |
|  | Forest or woodland vegetation on steep slopes contiguous to but more than 50 feet from other streams or wetlands  | conservation (c)                  |
|  | Forest or woodland vegetation contiguous to but more than 50 feet from other streams or wetlands                  | conservation (c)                  |

| <b>Table 8: Johnson Creek – Summary of Decisions</b> |   |                                   |
|--|---|-----------------------------------|
| <b>Resource Site</b>                                 | <b>Natural Resource Feature</b>   | <b>Environmental Overlay Zone</b> |
| JC13   | Stream channel to top-of-bank   | protection (p)                    |
|  | Wetlands  | protection (p)                    |
|  | Land within 50 feet of the top-of-bank of streams   | protection (p)                    |
|  | Land within 30 feet of wetlands   | protection (p)                    |
|  | Forest or woodland vegetation on steep slopes contiguous to but more than 50 feet from the top-of-bank of streams | conservation (c)                  |
|  | Forest or woodland vegetation contiguous to but more than 50 feet from the top-of-bank of streams                 | conservation (c)                  |
|  | Forest or woodland vegetation contiguous to but more than 30 feet from wetlands                                   | conservation (c)                  |
|  | Land within 25 feet of natural resources with a strictly limit ESEE decision                                      | conservation (c)                  |
| JC14   | Stream channel to top-of-bank   | protection (p)                    |
|  | Wetlands  | protection (p)                    |
|  | Land within 75 feet of the top-of-bank of streams   | conservation (c)                  |
|  | Land within 75 feet of wetlands   | conservation (c)                  |
| JC15   | Stream channel to top-of-bank   | protection (p)                    |
|  | Wetlands  | protection (p)                    |
|  | Land within 50 feet of the top-of-bank of streams   | protection (p)                    |
|  | Land within 30 feet of wetlands   | protection (p)                    |
|  | Forest or woodland vegetation on steep slopes contiguous to but more than 50 feet from the top-of-bank of streams | conservation (c)                  |
|  | Forest or woodland vegetation contiguous to but more than 50 feet from the top-of-bank of streams                 | conservation (c)                  |
|  | Forest or woodland vegetation contiguous to but more than 30 feet from wetlands                                   | conservation (c)                  |
|  | Land within 25 feet of natural resources with a strictly limit ESEE decision                                      | conservation (c)                  |

| <b>Table 8: Johnson Creek – Summary of Decisions</b> |   |                                   |
|--|---|-----------------------------------|
| <b>Resource Site</b>                                 | <b>Natural Resource Feature</b>   | <b>Environmental Overlay Zone</b> |
| JC16   | Stream channel to top-of-bank   | protection (p)                    |
|  | Wetlands  | protection (p)                    |
|  | Land within 50 feet of the top-of-bank of streams   | protection (p)                    |
|  | Land within 30 feet of wetlands   | protection (p)                    |
|  | Forest vegetation contiguous to streams between 50 and 200 feet of top of bank streams.                           | conservation (c)                  |
|  | Forest and woodland vegetation contiguous to streams on steep slopes  | conservation (c)                  |
|  | Land within 25 feet of natural resources with a strictly limit ESEE decision                                      | conservation (c)                  |
| JC17   | Stream channel to top-of-bank   | protection (p)                    |
|  | Wetlands  | protection (p)                    |
|  | Land within 40 feet of the top-of-bank of streams   | protection (p)                    |
|  | Land within 30 feet of wetlands   | protection (p)                    |
|  | Forest or woodland vegetation on steep slopes contiguous to but more than 40 feet from the top-of-bank of streams | conservation (c)                  |
|  | Forest or woodland vegetation contiguous to but more than 40 feet from the top-of-bank of streams                 | conservation (c)                  |
|  | Forest or woodland vegetation contiguous to but more than 30 feet from wetlands                                   | conservation (c)                  |
|  | In public parks, all remaining vegetation in public parks   | conservation (c)                  |
|  | Outside public parks, vegetation contiguous to public parks   | conservation (c)                  |
| JC18   | Stream channel to top-of-bank   | protection (p)                    |
|  | Wetlands  | protection (p)                    |
|  | Land within 50 feet of the top-of-bank of streams   | protection (p)                    |
|  | Land within 30 feet of wetlands   | protection (p)                    |
|  | Forest or woodland vegetation on steep slopes within public parks   | protection (p)                    |
|  | Forest or woodland vegetation within public parks   | protection (p)                    |
|  | Outside public parks, forest or woodland vegetation on steep slopes contiguous to streams                         | conservation (c)                  |
|  | Outside public parks, forest or woodland vegetation contiguous to streams   | conservation (c)                  |
|  | Outside public parks, forest or woodland vegetation contiguous wetlands and waterbodies                           | conservation (c)                  |
|  | Land within 25 feet of natural resources with a strictly limit ESEE decision                                      | Conservation (c)                  |

| <b>Table 8: Johnson Creek – Summary of Decisions</b> |   |                                   |
|--|---|-----------------------------------|
| <b>Resource Site</b>                                 | <b>Natural Resource Feature</b>   | <b>Environmental Overlay Zone</b> |
| JC19   | Stream channel to top-of-bank   | protection (p)                    |
|  | Wetlands  | protection (p)                    |
|  | Land within 50 feet of the top-of-bank of streams   | protection (p)                    |
|  | Land within 30 feet of wetlands   | protection (p)                    |
|  | Vegetated flood area  | protection (p)                    |
|  | Forest vegetation on steep slopes that is contiguous to but outside of the vegetated flood area                   | conservation (c)                  |
|  | Forest vegetation that is contiguous to but outside of the vegetated flood area                                   | conservation (c)                  |
| JC20   | Stream channel to top-of-bank   | protection (p)                    |
|  | Wetlands  | protection (p)                    |
|  | Land within 50 feet of the top-of-bank of streams   | protection (p)                    |
|  | Land within 30 feet of wetlands   | protection (p)                    |
|  | Vegetated flood area  | protection (p)                    |
|  | Forest vegetation on steep slopes that is contiguous to but outside of the vegetated flood area                   | conservation (c)                  |
|  | Forest vegetation that is contiguous to but outside of the vegetated flood area                                   | conservation (c)                  |
|  | Land within 25 feet of natural resources with a strictly limit ESEE decision                                      | conservation (c)                  |
| JC21   | Stream channel to top-of-bank   | protection (p)                    |
|  | Wetlands  | protection (p)                    |
|  | Land within 50 feet of the top-of-bank of streams   | protection (p)                    |
|  | Land within 30 feet of wetlands   | protection (p)                    |
|  | Forest or woodland vegetation on steep slopes contiguous to but more than 50 feet from the top-of-bank of streams | conservation (c)                  |
|  | Forest or woodland vegetation contiguous to but more than 50 feet from the top-of-bank of streams                 | conservation (c)                  |
|  | Forest or woodland vegetation contiguous to but more than 30 feet from wetlands                                   | conservation (c)                  |
|  | Land within 25 feet of natural resources with a strictly limit ESEE decision                                      | conservation (c)                  |

| <b>Table 8: Johnson Creek – Summary of Decisions</b> |   |                                   |
|--|---|-----------------------------------|
| <b>Resource Site</b>                                 | <b>Natural Resource Feature</b>   | <b>Environmental Overlay Zone</b> |
| JC22   | Stream channel to top-of-bank   | protection (p)                    |
|  | Wetlands  | protection (p)                    |
|  | Land within 40 feet of the top-of-bank of streams   | protection (p)                    |
|  | Land within 30 feet of wetlands   | protection (p)                    |
|  | Forest or woodland vegetation on steep slopes contiguous to but more than 40 feet from the top-of-bank of streams                       | conservation (c)                  |
|  | Forest or woodland vegetation contiguous to but more than 40 feet from the top-of-bank of streams                                       | conservation (c)                  |
|  | Forest or woodland vegetation contiguous to but more than 30 feet from wetlands   | conservation (c)                  |
|  | Land within 25 feet of natural resources with a strictly limit ESEE decision  | conservation (c)                  |
| JC23   | Stream channel to top-of-bank   | protection (p)                    |
|  | Wetlands  | protection (p)                    |
|  | Land within 50 feet of the top-of-bank of streams   | protection (p)                    |
|  | Land within 30 feet of wetlands   | protection (p)                    |
|  | In Powell Butte Nature Park, forest vegetation  | protection (p)                    |
|  | In Powell Butte Nature Park, all remaining vegetation   | conservation (c)                  |
|  | Outside Powell Butte Nature Park, forest vegetation on steep slopes contiguous to but more than 50 feet from the top-of-bank of streams | conservation (c)                  |
|  | Outside Powell Butte Nature Park, forest vegetation contiguous to but more than 50 feet from the top-of-bank of streams                 | conservation (c)                  |
|  | Outside Powell Butte Nature Park, forest vegetation contiguous to but more than 30 feet from wetlands                                   | conservation (c)                  |

| <b>Table 8: Johnson Creek – Summary of Decisions</b> |   |                                   |
|--|---|-----------------------------------|
| <b>Resource Site</b>                                 | <b>Natural Resource Feature</b>   | <b>Environmental Overlay Zone</b> |
| JC24   | Stream channel to top-of-bank   | protection (p)                    |
|  | Wetlands  | protection (p)                    |
|  | Land within 40 feet of the top-of-bank of streams   | protection (p)                    |
|  | Land within 30 feet of wetlands   | protection (p)                    |
|  | Forest or woodland vegetation on steep slopes contiguous to but more than 40 feet from the top-of-bank of streams | conservation (c)                  |
|  | Forest or woodland vegetation contiguous to but more than 40 feet from the top-of-bank of streams                 | conservation (c)                  |
|  | Forest or woodland vegetation contiguous to but more than 30 feet from wetlands                                   | conservation (c)                  |
|  | Land within 25 feet of natural resources with a strictly limit ESEE decision                                      | conservation (c)                  |
| JC25   | Stream channel to top-of-bank   | protection (p)                    |
|  | Wetlands  | protection (p)                    |
|  | Land within 50 feet of the top-of-bank of streams   | protection (p)                    |
|  | Land within 30 feet of wetlands   | protection (p)                    |
|  | Forest or woodland vegetation on steep slopes contiguous to but more than 50 feet from the top-of-bank of streams | conservation (c)                  |
|  | Forest or woodland vegetation contiguous to but more than 50 feet from the top-of-bank of streams                 | conservation (c)                  |
|  | Forest or woodland vegetation contiguous to but more than 30 feet from wetlands                                   | conservation (c)                  |
|  | Land within 25 feet of natural resources with a strictly limit ESEE decision                                      | conservation (c)                  |
| JC26   | Stream channel to top-of-bank   | protection (p)                    |
|  | Wetlands  | protection (p)                    |
|  | Land within 50 feet of the top-of-bank of streams   | protection (p)                    |
|  | Land within 30 feet of wetlands   | protection (p)                    |
|  | Forest or woodland vegetation on steep slopes contiguous to but more than 50 feet from the top-of-bank of streams | conservation (c)                  |
|  | Forest or woodland vegetation contiguous to but more than 50 feet from the top-of-bank of streams                 | conservation (c)                  |
|  | Forest or woodland vegetation contiguous to but more than 30 feet from wetlands                                   | conservation (c)                  |
|  | Land within 25 feet of natural resources with a strictly limit ESEE decision                                      | conservation (c)                  |



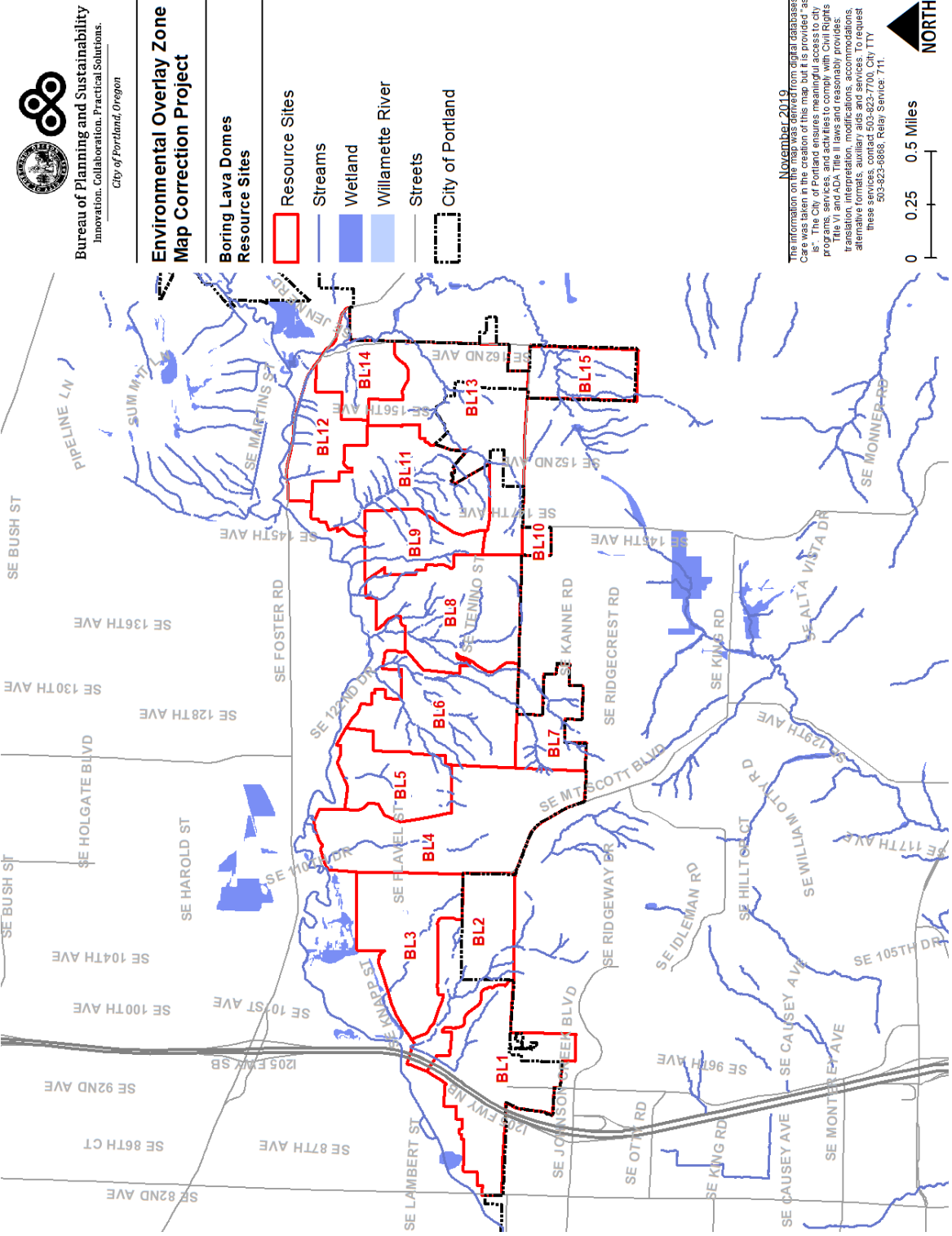
| <b>Table 8: Johnson Creek – Summary of Decisions</b> |   |                                   |
|--|---|-----------------------------------|
| <b>Resource Site</b>                                 | <b>Natural Resource Feature</b>   | <b>Environmental Overlay Zone</b> |
| JC27   | Stream channel to top-of-bank   | protection (p)                    |
|  | Wetlands  | protection (p)                    |
|  | Land within 50 feet of the top-of-bank of streams                                       | protection (p)                    |
|  | Land within 30 feet of wetlands   | protection (p)                    |
|  | Vegetated flood area  | protection (p)                    |
|  | Forest vegetation on steep slopes contiguous to but outside of the vegetated flood area | conservation (c)                  |
|  | Forest vegetation contiguous to but outside of the vegetated flood area                 | conservation (c)                  |

## **G.8. Boring Lava Domes**

The Boring Lava Domes plan geography, shown in Map 10, includes 15 resource sites generally located between Johnson Creek south to the Urban Service Boundary.

Table 9 summarizes results of the analysis presented in Volumes 2 – 4 and the application of conservation and protection overlay zones to the natural resource features by resource sites within the Boring Lava Domes geography. Additional information is found in Volume 2, Part G and, if there are discrepancies, Volume 2, Part G takes precedence over the summary table.

When the table states “land within” a certain distance of a river, stream or wetland the land includes all resources associated with the land including soils, flood area, vegetation and steep slopes, as well as developed land. Yards, decks, buildings, parking, loading, etc. located within that distance are also subject to the overlay zones.



Map 10: Boring Lava Domes Resource Sites

| <b>Table 9: Boring Lava Domes – Summary of Decisions</b> |   |                                   |
|--|---|-----------------------------------|
| <b>Resource Site</b>                                     | <b>Natural Resource Feature</b>   | <b>Environmental Overlay Zone</b> |
| BL1  | Stream channel to top-of-bank   | protection (p)                    |
|  | Wetlands  | protection (p)                    |
|  | Land within 40 feet of the top-of-bank of streams   | protection (p)                    |
|  | Land within 40 feet of wetlands   | protection (p)                    |
|  | Site specific decisions on natural resource tracts (see ESEE)   | protection (p)                    |
|  | Forest and woodland vegetation on steep slopes contiguous to but more than 40 feet from the top-of-bank of streams  | conservation (c)                  |
|  | Forest and woodland vegetation on not steep slopes contiguous to but more than 40 feet from the top-of-bank of streams                                    | conservation (c)                  |
| BL2  | Stream channel to top-of-bank   | protection (p)                    |
|  | Wetlands  | protection (p)                    |
|  | Land within 40 feet of the top-of-bank of streams   | protection (p)                    |
|  | Land within 40 feet of wetlands   | protection (p)                    |
|  | Forest and woodland vegetation on steep slopes contiguous to but more than 40 feet from the top-of-bank of streams and extending to 100 feet from streams | protection (p)                    |
|  | Forest and woodland vegetation on steep slopes contiguous to but more than 100 feet from the top-of-bank of streams                                       | conservation (c)                  |
|  | Forest and woodland vegetation on not steep slopes contiguous to but more than 40 feet from the top-of-bank of streams                                    | conservation (c)                  |

| <b>Table 9: Boring Lava Domes – Summary of Decisions</b> |   |                                   |
|--|---|-----------------------------------|
| <b>Resource Site</b>                                     | <b>Natural Resource Feature</b>   | <b>Environmental Overlay Zone</b> |
| BL3  | Stream channel to top-of-bank   | protection (p)                    |
|  | Wetlands  | protection (p)                    |
|  | Land within 25 feet of the top-of-bank of streams   | protection (p)                    |
|  | Land between 25 and 40 feet of top of bank of streams that is not forested  | conservation (c)                  |
|  | Land within 40 feet of wetlands   | protection (p)                    |
|  | Forest vegetation between 25 and 100 feet of top of bank of streams   | protection (p)                    |
|  | Woodland vegetation contiguous to and greater than 40 feet from top of bank streams   | conservation (c)                  |
|  | Forest and woodland vegetation on steep slopes contiguous to and greater than 40 feet from top of bank streams  | conservation (c)                  |
|  | Forest vegetation contiguous to and greater than 100 feet from top of bank streams  | conservation (c)                  |
| BL4  | Stream channel to top-of-bank   | protection (p)                    |
|  | Wetlands  | protection (p)                    |
|  | Land within 40 feet of the top-of-bank of streams   | protection (p)                    |
|  | Land within 40 feet of wetlands   | protection (p)                    |
|  | Land between 40 and 50 feet of wetlands   | conservation (c)                  |
|  | Forest and woodland vegetation on steep slopes contiguous to but more than 40 feet from the top-of-bank of streams and extending to 100 feet from streams | protection (p)                    |
|  | Forest and woodland vegetation on steep slopes contiguous to but more than 100 feet from the top-of-bank of streams                                       | conservation (c)                  |
|  | Forest and woodland vegetation on not steep slopes contiguous to but more than 40 feet from the top-of-bank of streams                                    | conservation (c)                  |

| <b>Table 9: Boring Lava Domes – Summary of Decisions</b> |   |                                   |
|--|---|-----------------------------------|
| <b>Resource Site</b>                                     | <b>Natural Resource Feature</b>   | <b>Environmental Overlay Zone</b> |
| BL5  | Stream channel to top-of-bank   | protection (p)                    |
|  | Wetlands  | protection (p)                    |
|  | Land within 40 feet of the top-of-bank of streams   | protection (p)                    |
|  | Land within 40 feet of wetlands   | protection (p)                    |
|  | Forest and woodland vegetation on steep slopes contiguous to but more than 40 feet from the top-of-bank of streams and extending to 100 feet from streams | protection (p)                    |
|  | Forest and woodland vegetation on steep slopes contiguous to but more than 100 feet from the top-of-bank of streams                                       | conservation (c)                  |
|  | Forest and woodland vegetation on not steep slopes contiguous to but more than 40 feet from the top-of-bank of streams                                    | conservation (c)                  |
| BL6  | Stream channel to top-of-bank   | protection (p)                    |
|  | Wetlands  | protection (p)                    |
|  | Land within 40 feet of the top-of-bank of streams   | protection (p)                    |
|  | Land within 40 feet of wetlands   | protection (p)                    |
|  | Forest and woodland vegetation on steep slopes contiguous to but more than 40 feet from the top-of-bank of streams  | protection (p)                    |
|  | Forest and woodland vegetation on not steep slopes contiguous to but more than 40 feet from the top-of-bank of streams                                    | conservation (c)                  |
|  | Forest and woodland vegetation on not steep slopes contiguous to but more than 40 feet from the top-of-bank of streams                                    | conservation (c)                  |
| BL7  | Stream channel to top-of-bank   | protection (p)                    |
|  | Wetlands  | protection (p)                    |
|  | Land within 40 feet of the top-of-bank of streams   | protection (p)                    |
|  | Land within 40 feet of wetlands   | protection (p)                    |
|  | Forest and woodland vegetation on steep slopes contiguous to but more than 40 feet from the top-of-bank of streams  | protection (p)                    |
|  | Forest and woodland vegetation on not steep slopes contiguous to but more than 40 feet from the top-of-bank of streams                                    | conservation (c)                  |
|  | Forest and woodland vegetation on not steep slopes contiguous to but more than 40 feet from the top-of-bank of streams                                    | conservation (c)                  |

| <b>Table 9: Boring Lava Domes – Summary of Decisions</b> |  |                                   |
|--|--|-----------------------------------|
| <b>Resource Site</b>                                     | <b>Natural Resource Feature</b>  | <b>Environmental Overlay Zone</b> |
| BL8  | Stream channel to top-of-bank  | protection (p)                    |
|  | Wetlands   | protection (p)                    |
|  | Land within 40 feet of the top-of-bank of streams  | protection (p)                    |
|  | Land within 40 feet of wetlands  | protection (p)                    |
|  | Forest and woodland vegetation on steep slopes contiguous to but more than 40 feet from the top-of-bank of streams     | protection (p)                    |
|  | Forest and woodland vegetation on not steep slopes contiguous to but more than 40 feet from the top-of-bank of streams | conservation (c)                  |
| BL9  | Stream channel to top-of-bank  | protection (p)                    |
|  | Wetlands   | protection (p)                    |
|  | Land within 40 feet of the top-of-bank of streams  | protection (p)                    |
|  | Land within 40 feet of wetlands  | protection (p)                    |
|  | Forest and woodland vegetation on steep slopes contiguous to but more than 40 feet from the top-of-bank of streams     | protection (p)                    |
|  | Forest and woodland vegetation on not steep slopes contiguous to but more than 40 feet from the top-of-bank of streams | conservation (c)                  |
| BL10   | Stream channel to top-of-bank  | protection (p)                    |
|  | Wetlands   | protection (p)                    |
|  | Land within 40 feet of the top-of-bank of streams  | protection (p)                    |
|  | Land within 40 feet of wetlands  | protection (p)                    |
|  | Forest and woodland vegetation on steep slopes contiguous to but more than 40 feet from the top-of-bank of streams     | protection (p)                    |
|  | Forest and woodland vegetation on not steep slopes contiguous to but more than 40 feet from the top-of-bank of streams | conservation (c)                  |

| <b>Table 9: Boring Lava Domes – Summary of Decisions</b> |  |                                   |
|--|--|-----------------------------------|
| <b>Resource Site</b>                                     | <b>Natural Resource Feature</b>  | <b>Environmental Overlay Zone</b> |
| BL11   | Stream channel to top-of-bank  | protection (p)                    |
|  | Wetlands   | protection (p)                    |
|  | Land within 40 feet of the top-of-bank of streams, except along SE Barbara Welch Rd  | protection (p)                    |
|  | Land within 40 feet of wetlands  | protection (p)                    |
|  | Along SE Barbara Welch Rd, land within 25 feet of the top-of-bank of streams (see resource site-specific ESEE decision)              | protection (p)                    |
|  | Along SE Barbara Welch Rd, land between 25 feet and 40 feet of the top-of-bank of streams (see resource site-specific ESEE decision) | conservation (c)                  |
|  | Forest and woodland vegetation on steep slopes contiguous to but more than 40 feet from the top-of-bank of streams                   | conservation (c)                  |
|  | Forest and woodland vegetation contiguous to but more than 40 feet from the top-of-bank of streams                                   | conservation (c)                  |
| BL12   | Stream channel to top-of-bank  | protection (p)                    |
|  | Wetlands   | protection (p)                    |
|  | Land within 40 feet of the top-of-bank of streams  | protection (p)                    |
|  | Land within 40 feet of wetlands  | protection (p)                    |
|  | Forest and woodland vegetation on steep slopes contiguous to but more than 40 feet from the top-of-bank of streams                   | protection (p)                    |
|  | Forest and woodland vegetation on not steep slopes contiguous to but more than 40 feet from the top-of-bank of streams               | conservation (c)                  |
| BL13   | Stream channel to top-of-bank  | protection (p)                    |
|  | Wetlands   | protection (p)                    |
|  | Land within 40 feet of the top-of-bank of streams  | protection (p)                    |
|  | Land within 40 feet of wetlands  | protection (p)                    |
|  | Forest and woodland vegetation on steep slopes contiguous to but more than 40 feet from the top-of-bank of streams                   | protection (p)                    |
|  | Forest and woodland vegetation on not steep slopes contiguous to but more than 40 feet from the top-of-bank of streams               | conservation (c)                  |



| <b>Table 9: Boring Lava Domes – Summary of Decisions</b> |  |                                   |
|--|--|-----------------------------------|
| <b>Resource Site</b>                                     | <b>Natural Resource Feature</b>  | <b>Environmental Overlay Zone</b> |
| BL14   | Stream channel to top-of-bank  | protection (p)                    |
|  | Wetlands   | protection (p)                    |
|  | Land within 40 feet of the top-of-bank of streams  | protection (p)                    |
|  | Land within 40 feet of wetlands  | protection (p)                    |
|  | Forest and woodland vegetation on steep slopes contiguous to but more than 40 feet from the top-of-bank of streams     | protection (p)                    |
|  | Forest and woodland vegetation on not steep slopes contiguous to but more than 40 feet from the top-of-bank of streams | conservation (c)                  |
| BL15   | Stream channel to top-of-bank  | protection (p)                    |
|  | Wetlands   | protection (p)                    |
|  | Land within 40 feet of the top-of-bank of streams  | protection (p)                    |
|  | Land within 40 feet of wetlands  | protection (p)                    |
|  | Forest and woodland vegetation on steep slopes contiguous to but more than 40 feet from the top-of-bank of streams     | protection (p)                    |
|  | Forest and woodland vegetation on not steep slopes contiguous to but more than 40 feet from the top-of-bank of streams | conservation (c)                  |

# **The *Environmental Overlay Zone Map Correction Project* plan documents:**

## **Volume 1A – Project Report, Summary of Results and Implementation**

The purpose of the Project Report is to document the overall project approach and methodology, summarize public engagement, and provide an at-a-glance summary of the results by resource site.

## **Volume 1B – Zoning Code and Map Amendments**

Amendments to zoning code chapter 33.430, Environmental Zones, and the official zoning maps.

## **Volume 2 – Resource Site Inventory and ESEE Decisions**

For each of the geographies listed below, each document presents an inventory of natural resource features and functions, a site-specific Economic, Social, Environmental and Energy Analysis (ESEE), and the ESEE decisions regarding which natural resource should be protected for each resource site.

**Part A1 – Forest Park and Northwest District, Resource Sites 1 – 20**

**Part A2 – Forest Park and Northwest District, Resource Sites 21 – 41**

**Part B – Skyline West**

**Part C – Tryon Creek and Southwest Hills East**

**Part D – Fanno Creek**

**Part E – East Buttes and Terraces**

**Part F – Johnson Creek**

**Part G – Boring Lava Domes**

## **Volume 3 – Natural Resources Inventory**

Approach and methodology used to produce the citywide Natural Resources Inventory. The results of the inventory are presented in Volume 2, Part A – G.

## **Volume 4 – Compliance Report**

Compliance with Metro Urban Growth Management Plan Title 13 for Habitat Conservation Areas and Oregon State Planning Goal 5 for significant natural resources that are not a Habitat Conservation Area. The results, recommendations and implementation are reported in Volume 2, Part A – G, and Volume 1, Part B.

## **Volume 5 – Appendices**