



Creating jobs, building our future

Portland City Council

June 25, 2020





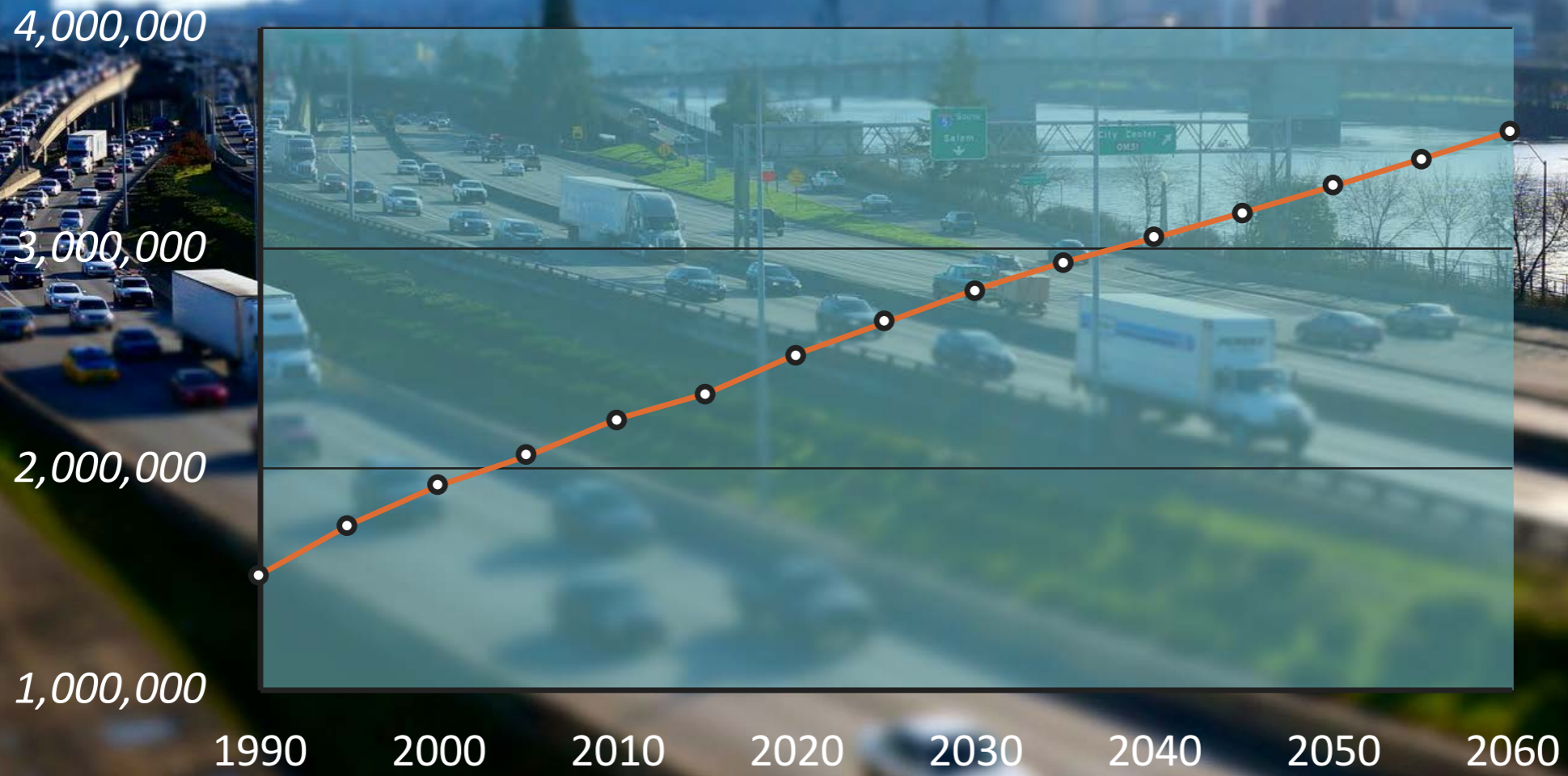
We are still one region.



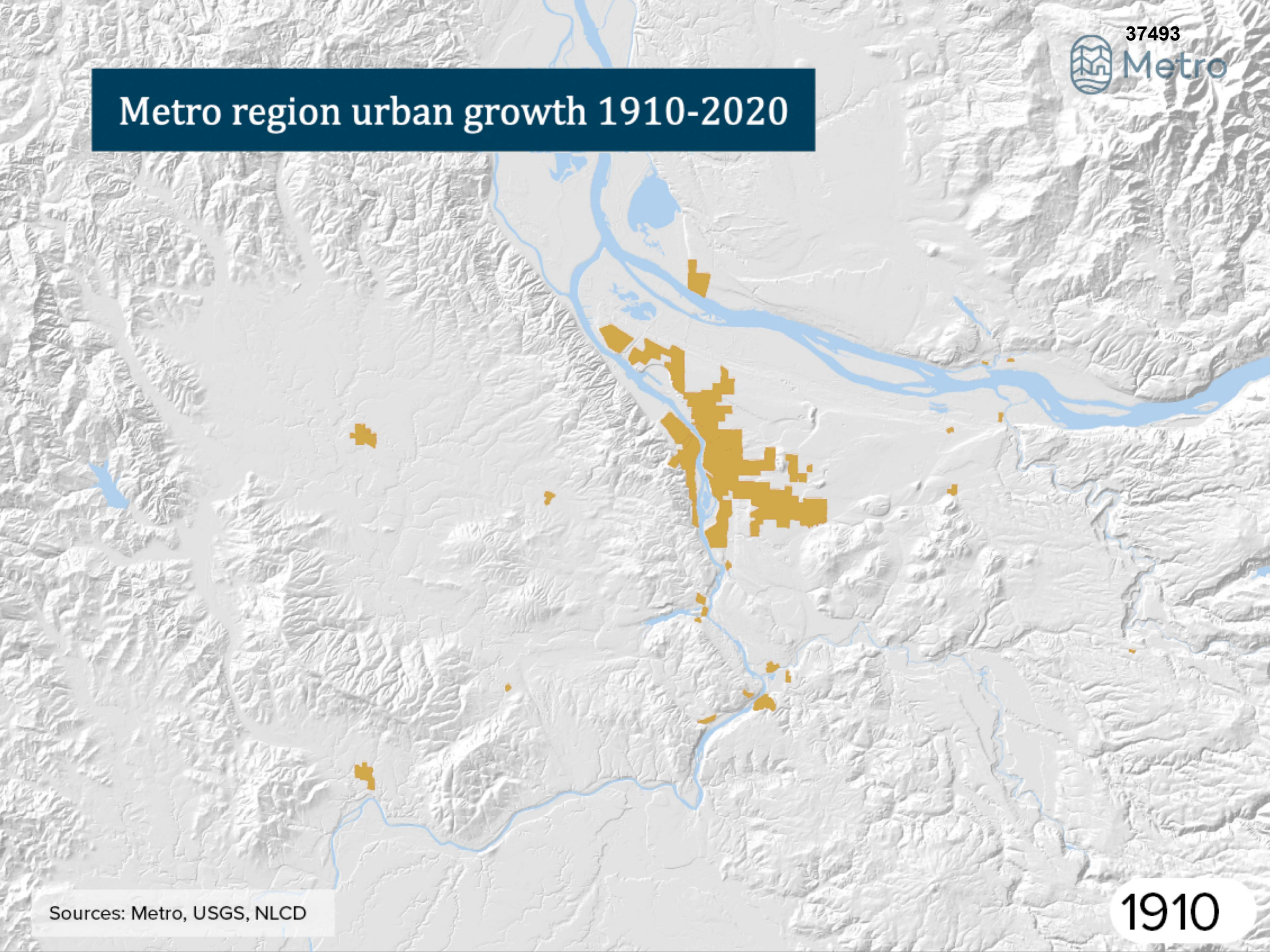
We still need to think big.



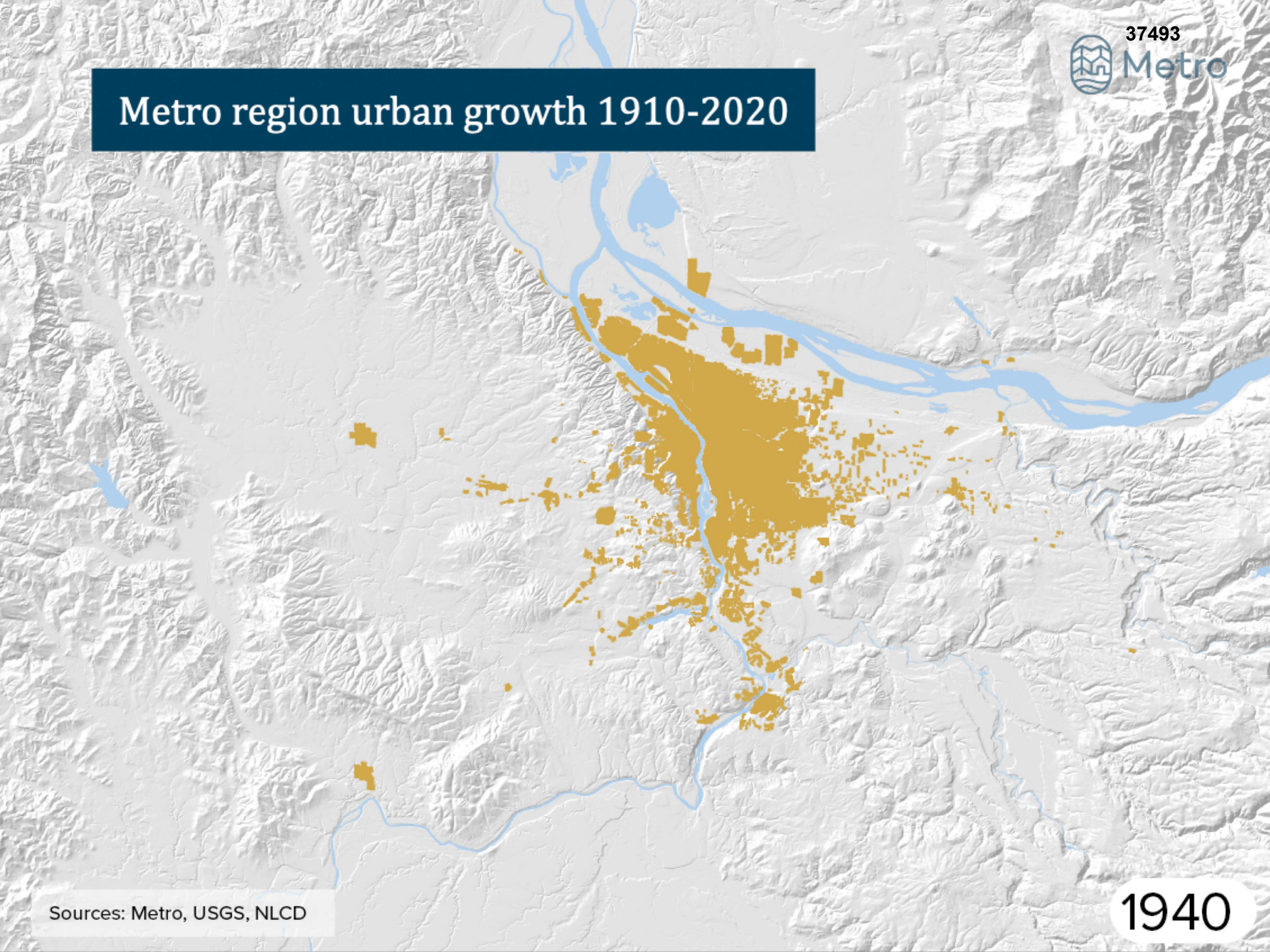
Metro Region 2060 Population Forecast



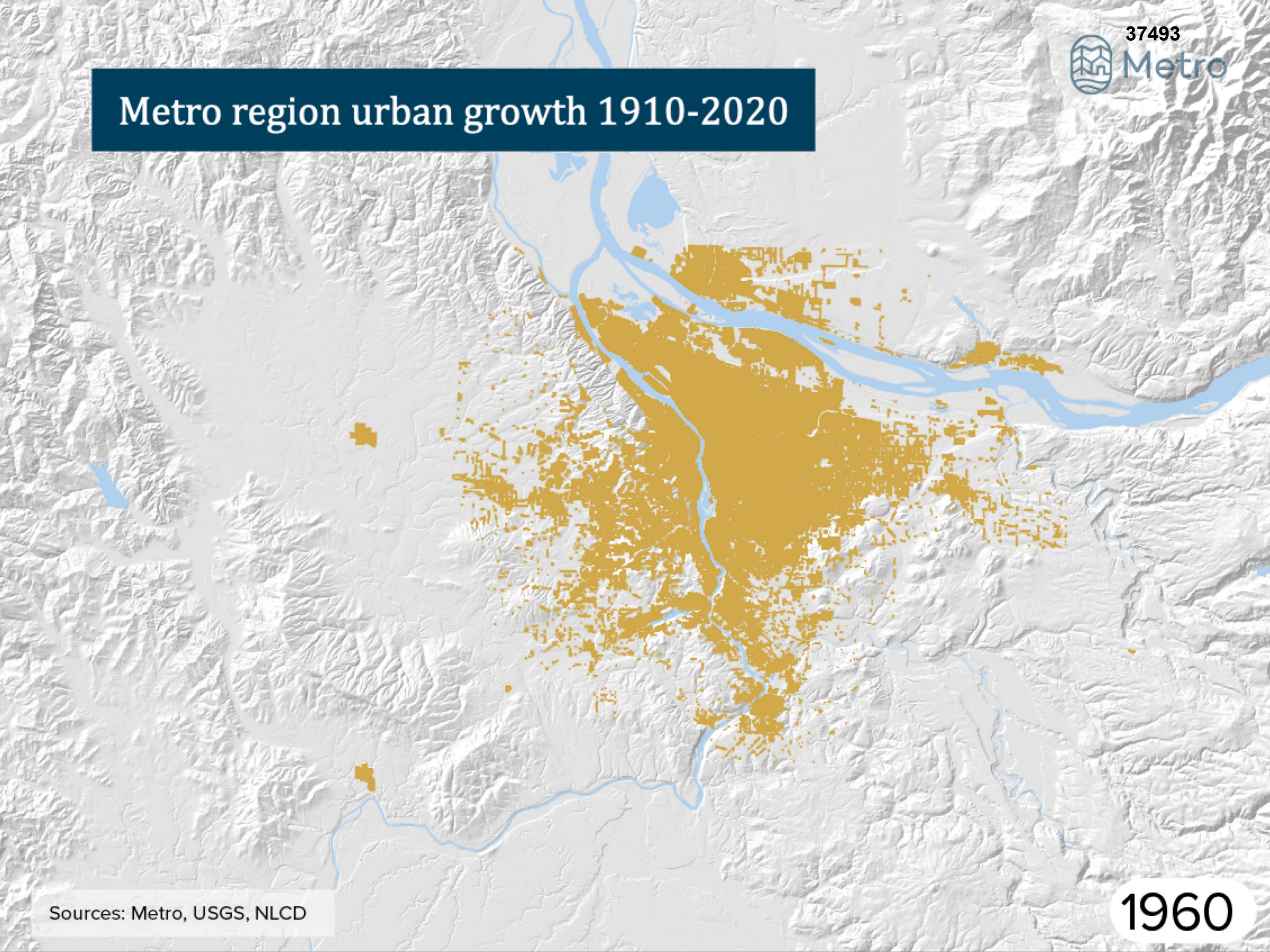
Metro region urban growth 1910-2020



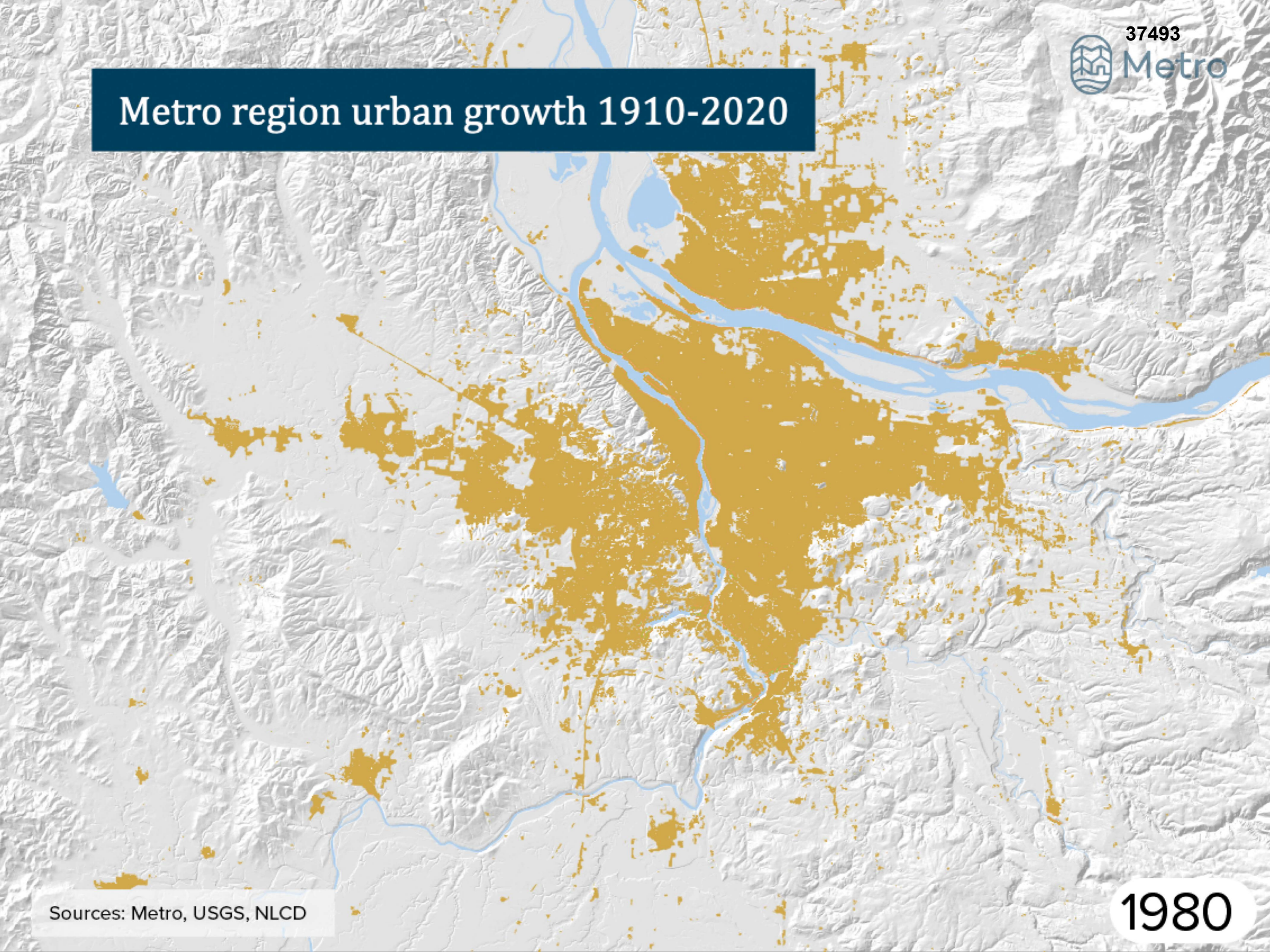
Metro region urban growth 1910-2020



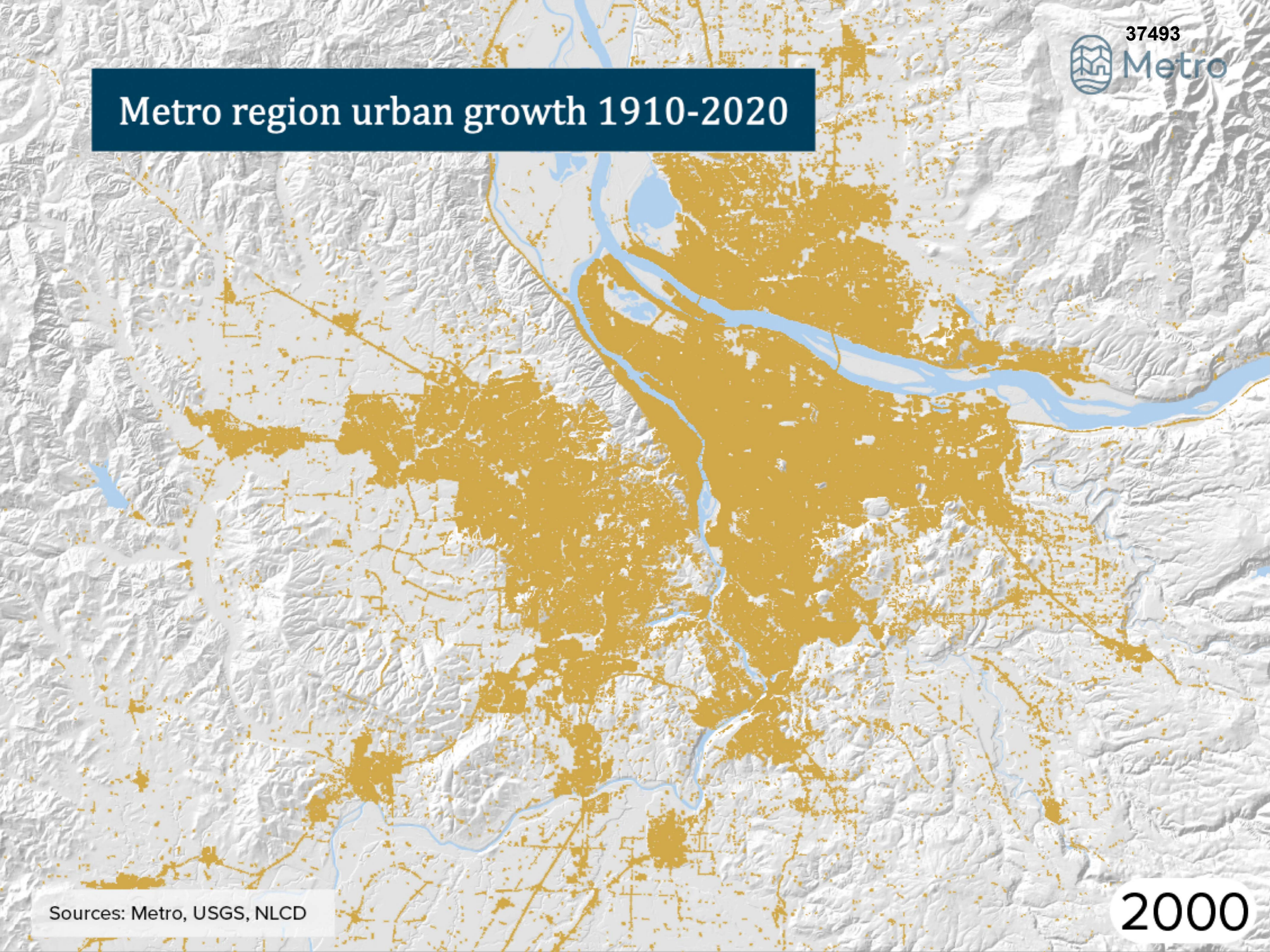
Metro region urban growth 1910-2020



Metro region urban growth 1910-2020



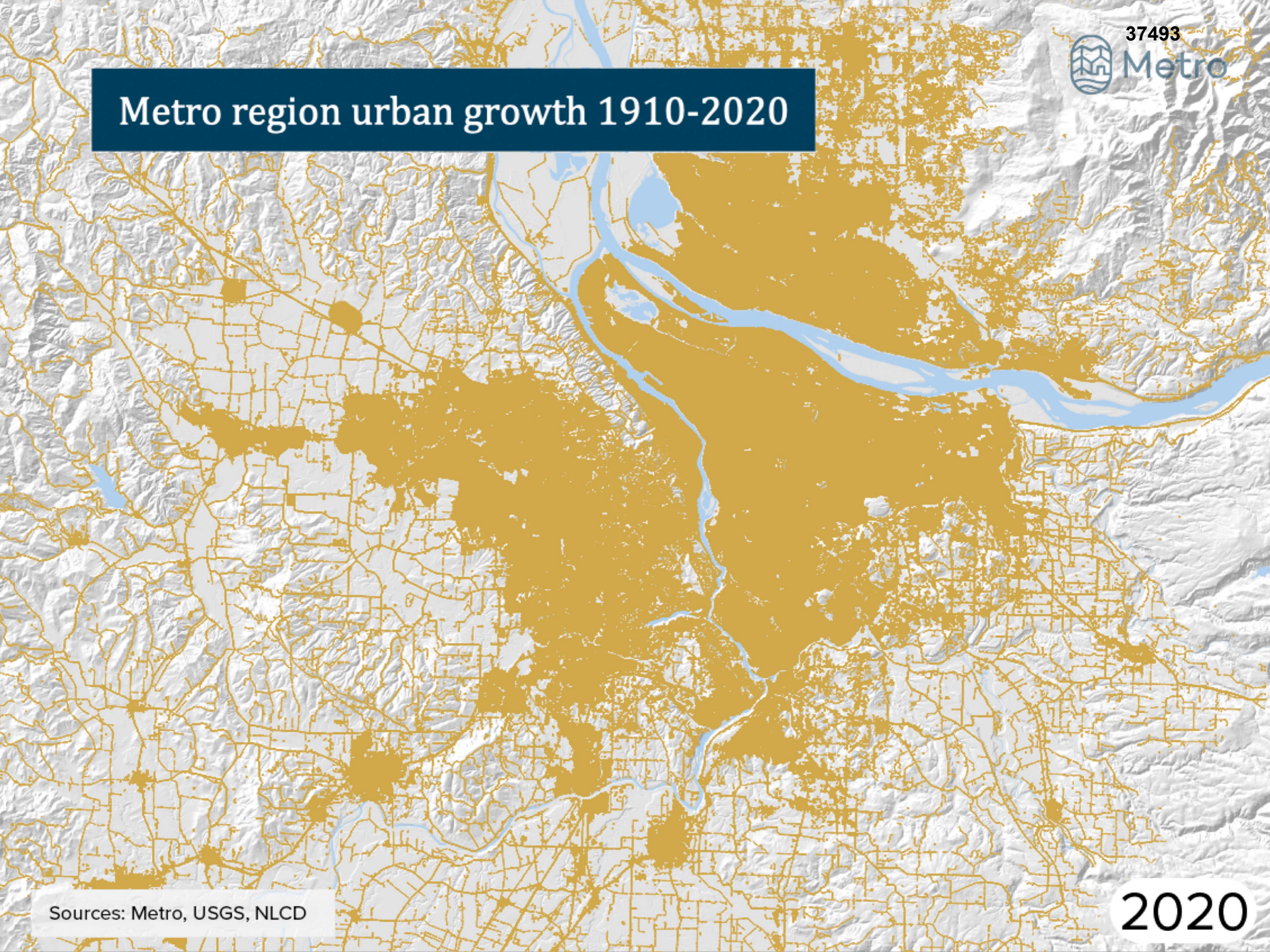
Metro region urban growth 1910-2020



Sources: Metro, USGS, NLCD

2000

Metro region urban growth 1910-2020



Sources: Metro, USGS, NLCD

2020



37,500+ jobs.





37493

VISION
ZERO



TRI MET

WIND-POWERED BY



Zero Emissions

ALL-ELECTRIC
WIND-POWERED

TRI MET

3801

POWERED BY WIND











What will we build?



115-120

Miles of roadway improvements



60

Miles of roadway planning



25-30

Miles of
new bus
lanes



260

Traffic signal
improvements

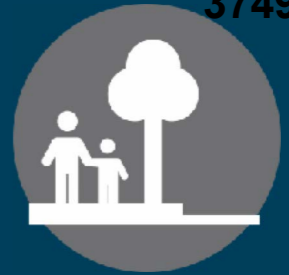


11

Miles of
new MAX
line



37493



40-45

Miles of new sidewalk



4,000

New street lights



280

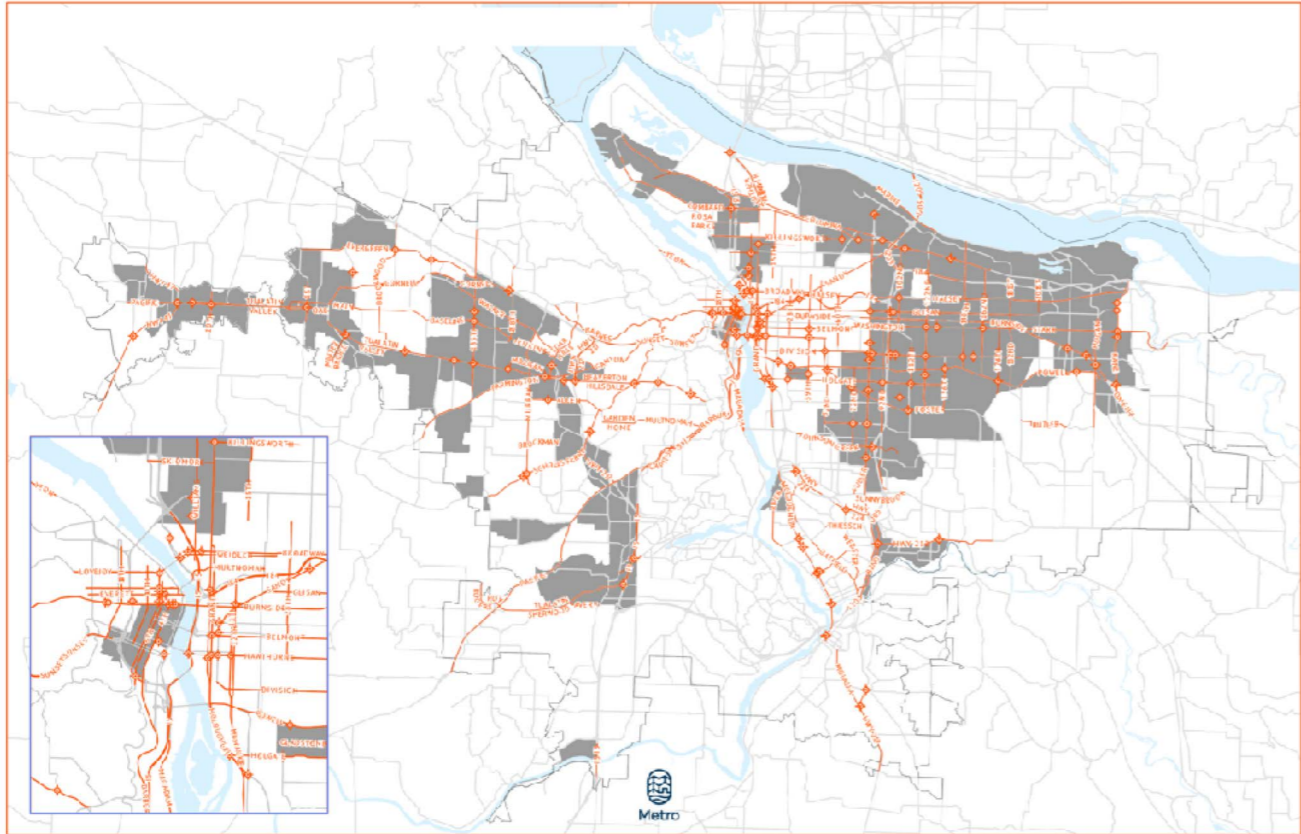
Safe marked crossings



130-140

Miles of improved
bikeways

Making our roads safer.



86 miles
of safety investments
in high-injury
corridors.

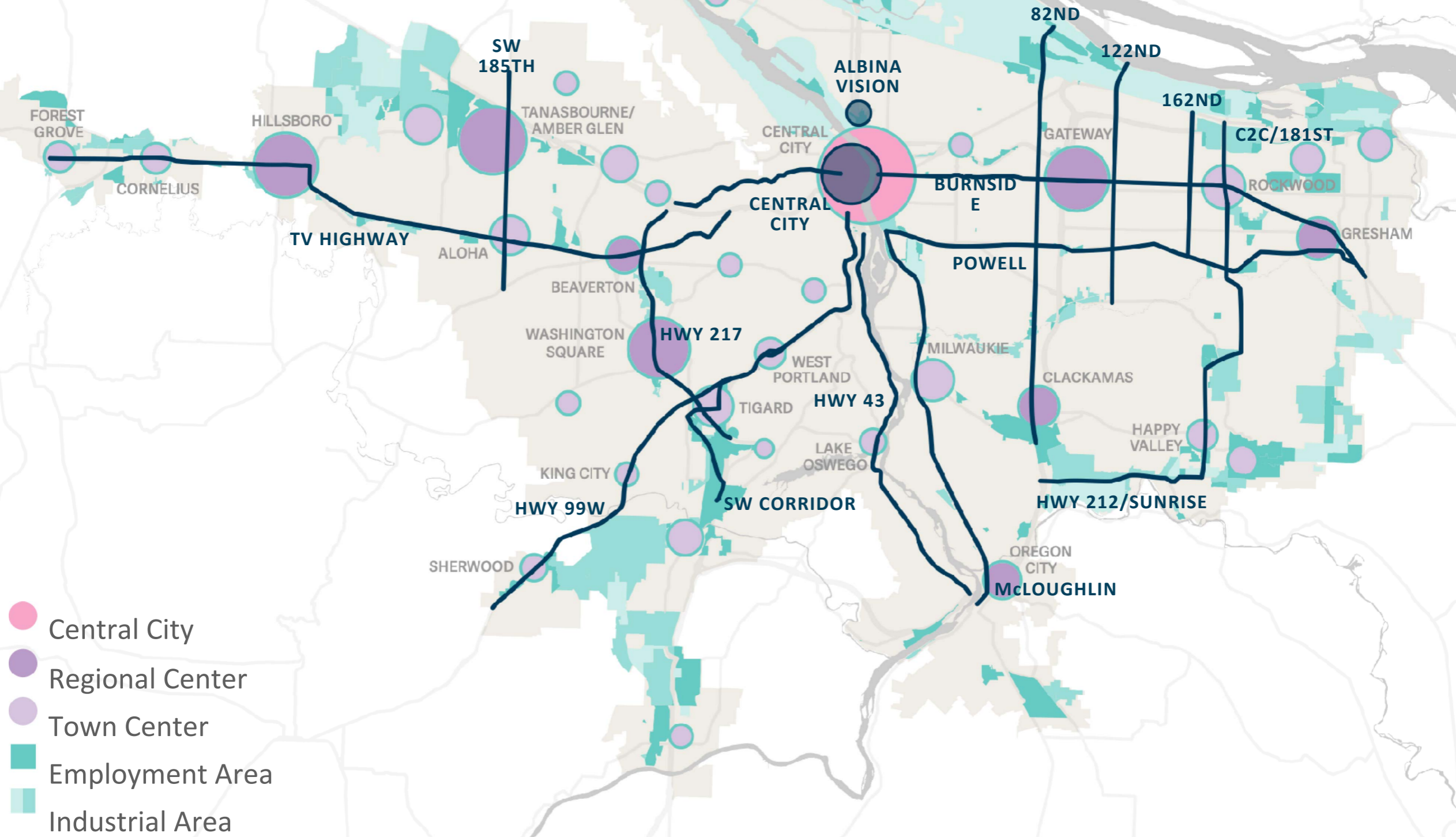
100
Fewer
fatalities

350
Fewer severe
injuries

*Estimated safety benefit over 20 years (typical project lifespan).
Based on an analysis of the safety performance of Tier 1 corridors
and Highway Safety Manual principles, using documented Crash
Reduction Factors also used by FHWA, ODOT, and City of
Portland.*

Where will we build it?

16 investment corridors.



MULTNOMAH
COUNTY
INVESTMENTS

Central City

Burnside

82nd Ave

122nd Ave

162nd Ave

Clackamas-to-
Columbia/181st

Albina Vision

Powell Blvd

SW Corridor



Southwest Corridor



9-15

MILES OF NEW SIDEWALK



20-40

SAFER MARKED CROSSINGS



9-15

MILES OF IMPROVED BIKEWAYS



150-250

NEW STREET LIGHTS



20-35

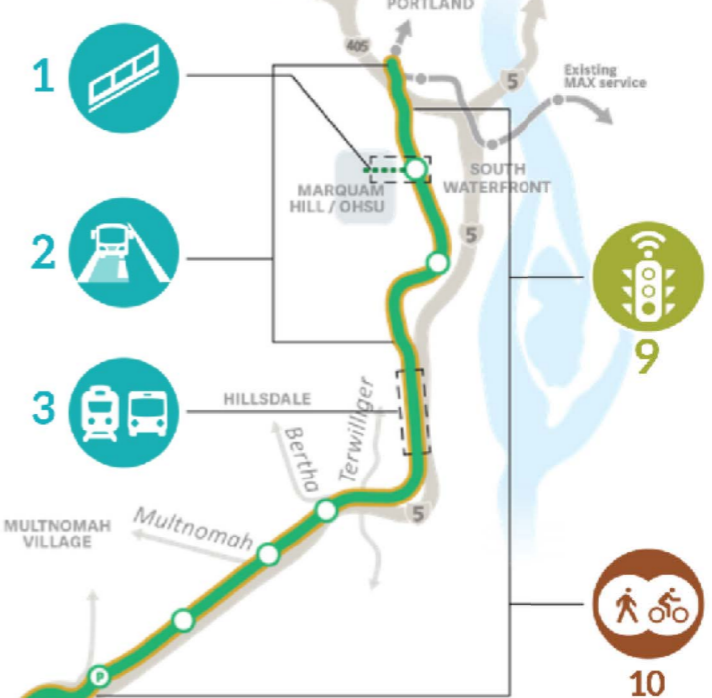
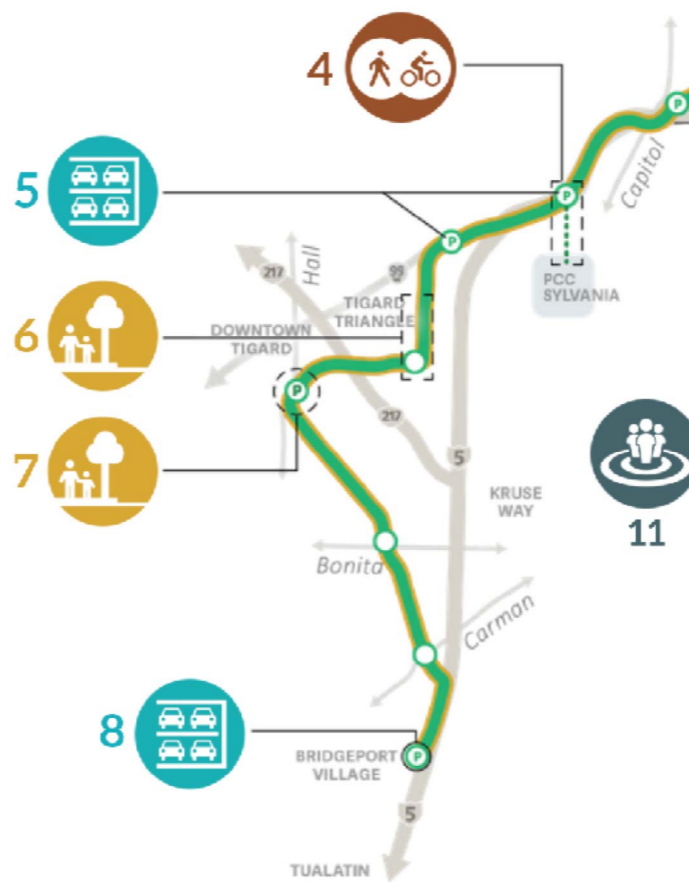
NEW TRANSIT PRIORITY SIGNALS



2-3

MILES OF NEW BUS LANES

- 1 Marquam Hill connector
- 2 Bus/MAX lanes
- 3 Barbur bridge replacements
- 4 PCC-Sylvania connection
- 5 Park & Rides at SW 53rd and SW 68th



- 6 Downtown Tigard street improvements
- 7 Tigard Triangle street improvements
- 8 Terminus station
- 9 Traffic signal improvements
- 10 Walking and biking improvements
- 11 Community stability

 **11 miles of new MAX Green Line**

82nd Ave



2-5

MILES OF NEW
SIDEWALK



35-60

SAFER MARKED
CROSSINGS



10-15

MILES OF
IMPROVED
BIKEWAYS



570-950

NEW STREET
LIGHTS



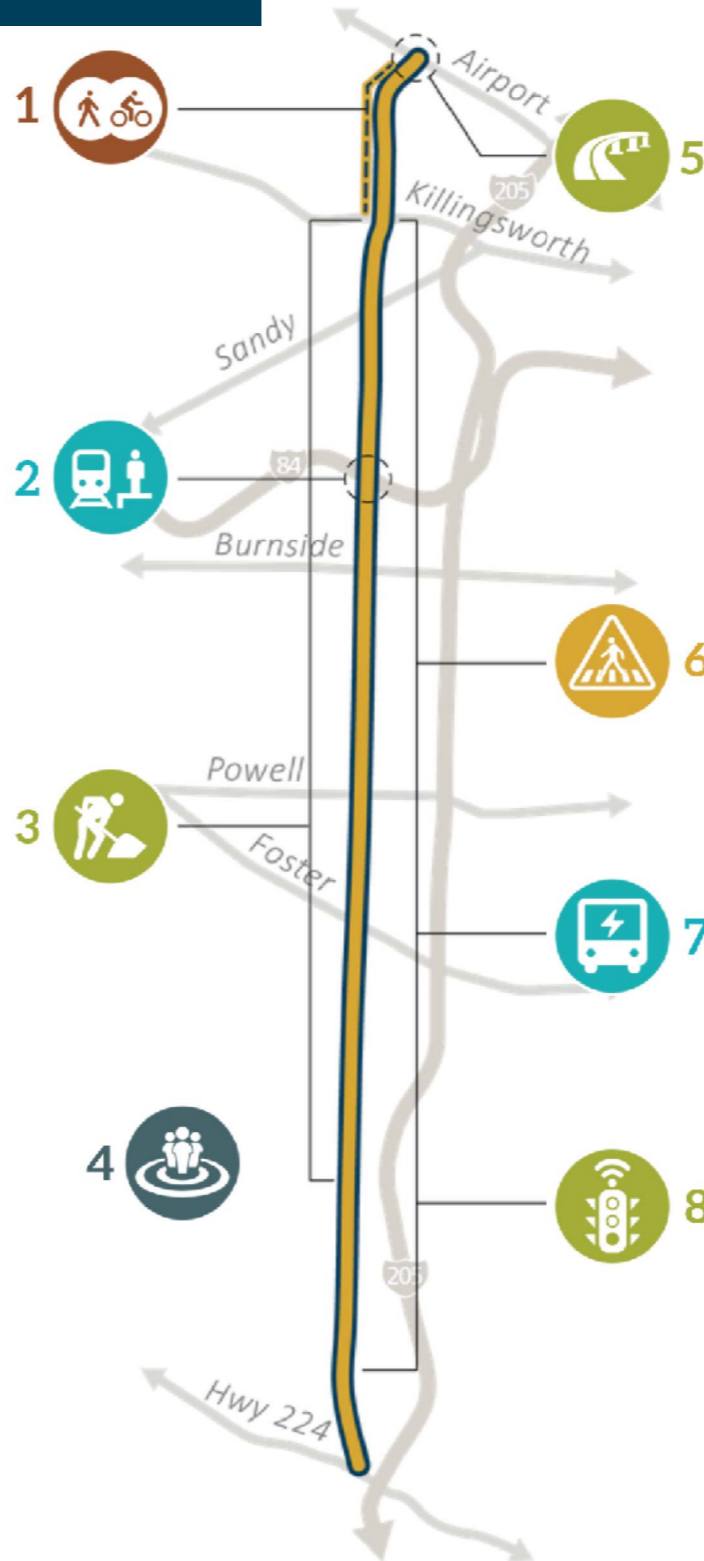
30-45

NEW TRANSIT
PRIORITY SIGNALS



2-5

MILES OF NEW
BUS LANES



1 Safer walking and biking

- planning for Alderwood-to-Killingsworth Path

2 Planning for better pedestrian access to 82nd Ave MAX station

3 Roadway rebuild

4 Community stability

- preventing displacement of families and businesses

5 Easier airport access

- Airport Way overcrossing at 82nd Ave

6 Safety for all

- sidewalks
- safer, marked crossings
- street lighting
- buffered bike lanes and neighborhood greenways

7 Bus Rapid Transit

- electric buses
- bus priority lanes
- new bus stations with realtime arrival info

8 Traffic signal improvements

Central City



1-2

MILES OF NEW
SIDEWALK



25-40

SAFER MARKED
CROSSINGS



15-30

MILES OF
IMPROVED
BIKEWAYS



5-10

MILE OF NEW
BUS LANES



1 Central City in Motion →

- transit priority lanes
- traffic signal improvements
- safer crossings
- bike network improvements

2 MAX tunnel planning →

- planning for faster MAX trips throughout the system by getting MAX off of downtown streets
- Goose Hollow to Lloyd Center

3 Ross Island bridgehead

- reconnecting neighborhoods
- reducing gridlock
- Naito Parkway Main Street →
- safer crossings
- protected bike lanes

4 Community stability

- preventing displacement of families and businesses

122nd Ave



1-3

MILES OF NEW
SIDEWALK



10-20

SAFER MARKED
CROSSINGS



9-15

MILES OF
IMPROVED
BIKEWAYS



340-560

NEW STREET
LIGHTS



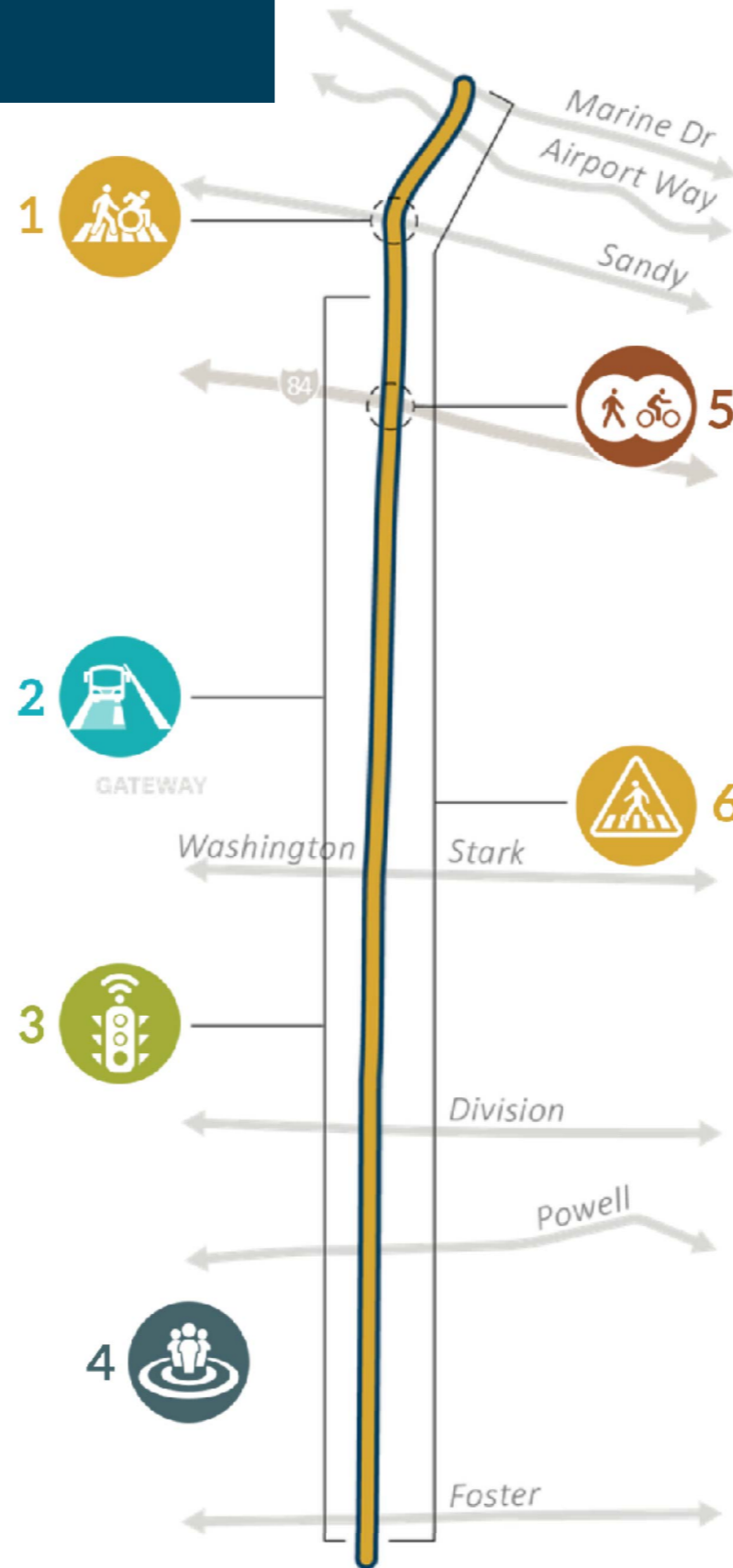
20-30

NEW TRANSIT
PRIORITY SIGNALS



1

MILE OF NEW
BUS LANES



1 Intersection improvements

2 Better Bus

- bus priority lanes
- new bus shelters
- better lighting at stops

3 Traffic signal improvements

4 Community Stability

- preventing displacement of families and businesses

5 Connections to I-84 Path

- connects path to Fremont Street

6 Safety for all

- sidewalks
- crosswalks and signals
- street lighting
- buffered bike lanes

162nd Ave



2-4

MILES OF NEW
SIDEWALK



3-7

SAFER
MARKED
CROSSINGS



1-2

MILES OF
IMPROVED
BIKEWAYS



85-145

NEW STREET
LIGHTS



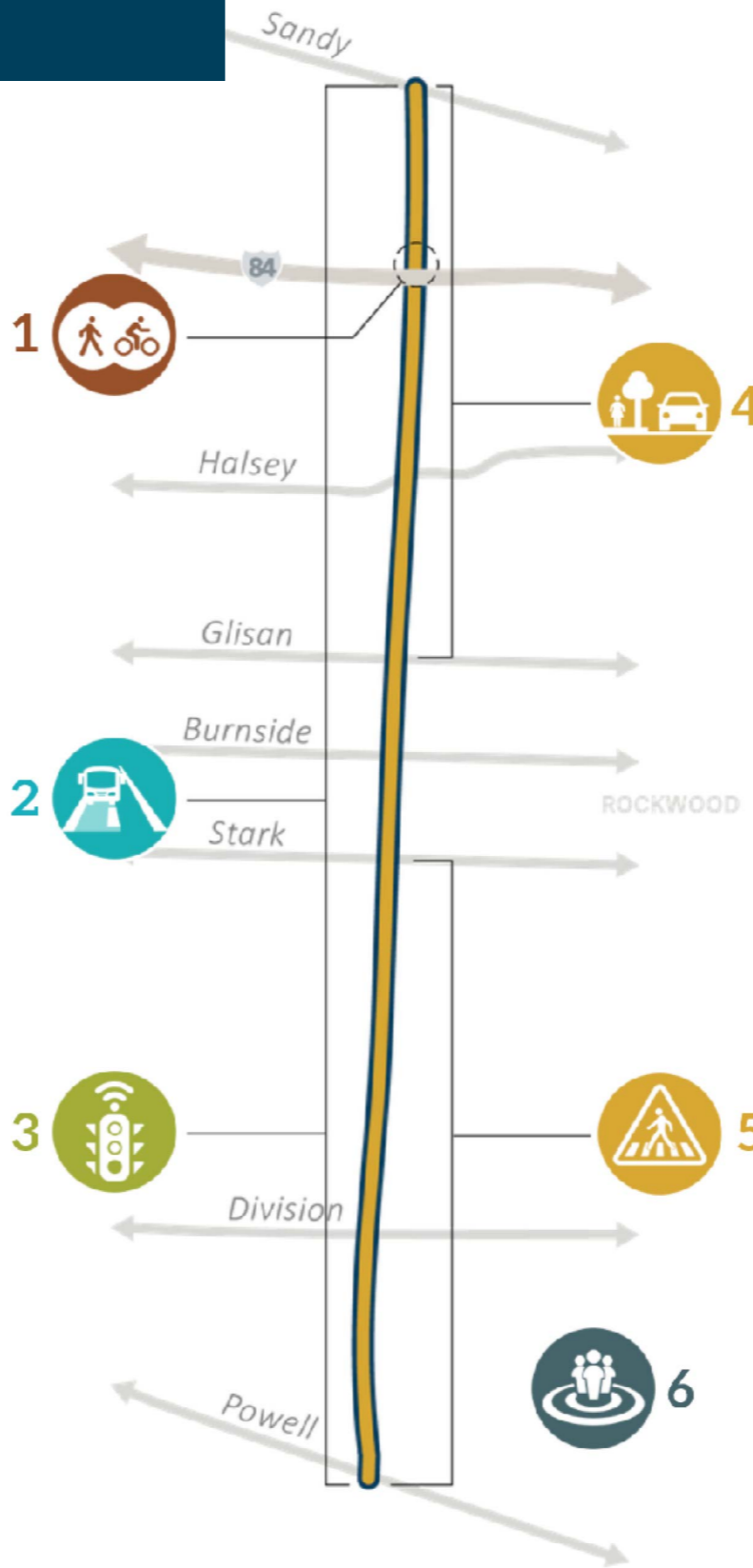
5-10

NEW TRANSIT
PRIORITY SIGNALS



20-25

MILES OF NEW
BUS LANES



1 Safer railroad undercrossing

2 Better Bus

- bus priority
- new bus shelters
- better lighting at stops

3 Traffic signal improvements

4 Complete street

- sidewalks
- safer, marked crossings
- buffered bike lanes
- turn lanes

5 Safety for all

- sidewalks
- safer, marked crossings
- street lighting

6 Community Stability

- preventing displacement of families and businesses

Powell Blvd



.5
MILES OF
IMPROVED
BIKEWAYS



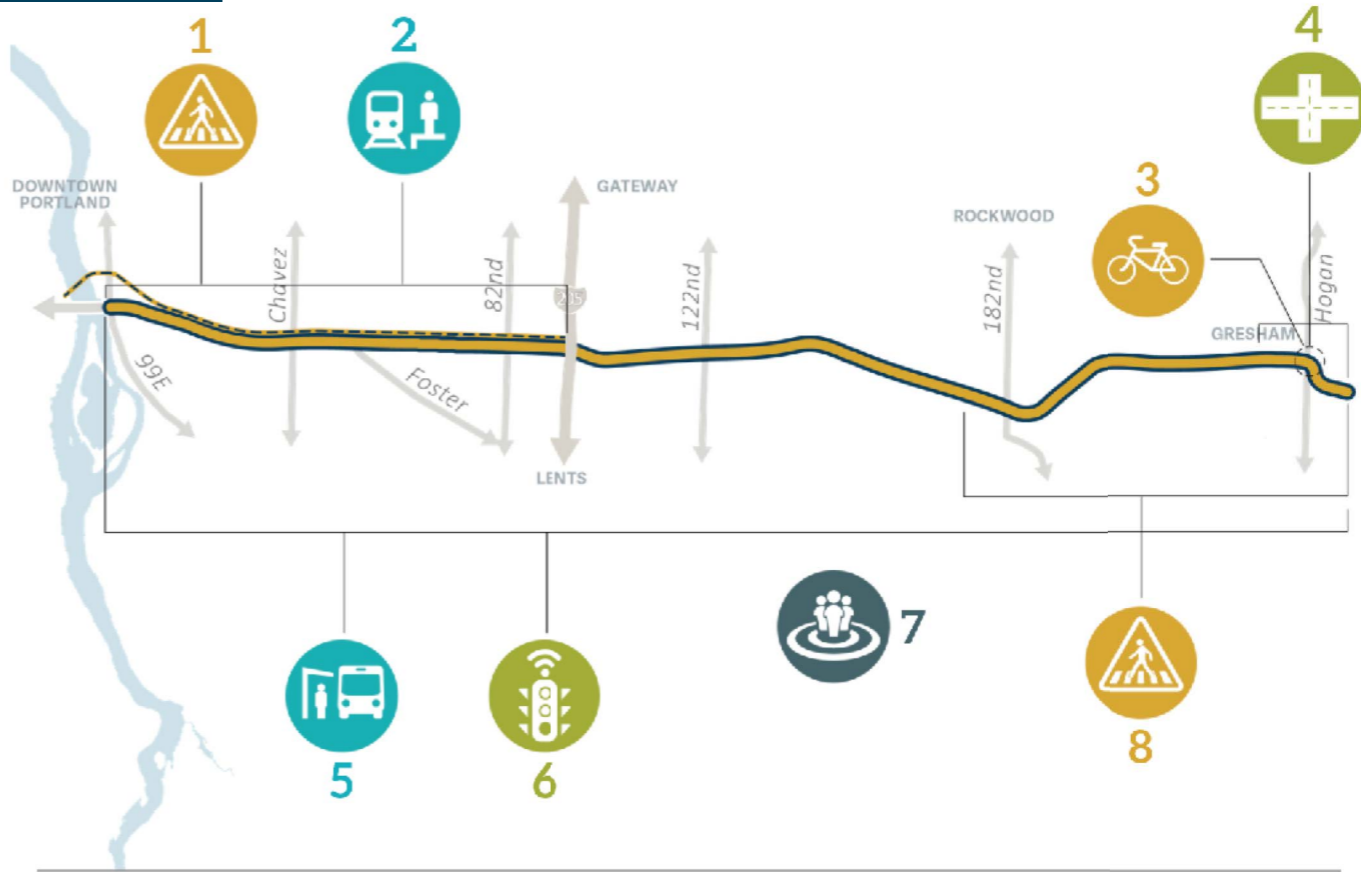
75-125
NEW STREET
LIGHTS



20-30
NEW TRANSIT
PRIORITY SIGNALS



15-25
SAFER MARKED
CROSSINGS



1 Safety for all

- safer, marked crossings
- street lighting

2 Plan for MAX or Bus Rapid Transit

- downtown to I-205/Green Line

3 Downtown Gresham bikeway

4 Improved intersection

- reducing gridlock

5 Better Bus

- new bus shelters
- better lighting at stops

6 Traffic signal improvements

7 Community stability

- preventing displacement of families and businesses

8 Safety for all

- safer, marked crossings
- street lighting

Albina Vision



1-2

MILES OF NEW
SIDEWALK



12-20

SAFER
MARKED
CROSSINGS



1-4

MILES OF
IMPROVED
BIKEWAYS



825-1375

NEW STREET
LIGHTS



1 Improving safety and livability on major streets in the Albina District

- safer, marked crossings
- street lighting
- street trees
- transit stop improvements
- traffic signal improvements
- public art

2 Planning for future land use and development

- [Albina Vision](#) →

3 Community stability

- strategies to prevent displacement of families and businesses

\$4B

Estimated total construction spending on investment corridors

37,500+

Estimated construction jobs created (direct and indirect)

\$98,000

Average annual income per construction job



REGIONWIDE PROGRAMS



**Safe Routes
to School**



Safety Hot Spots



**Regional Walking and
Biking Connections**



REGIONWIDE
PROGRAMS



**Thriving Main
Streets**



**Anti-displacement
Strategies**



**Housing
Opportunity Fund**



REGIONWIDE PROGRAMS



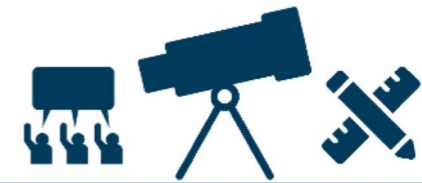
Bus Electrification



Youth Transit Access



Better Bus



Future Corridor Planning



A collaborative vision.







Let's invest in our future.





Let's get shovels in the ground.





Let's get people back to work.





Let's get moving.

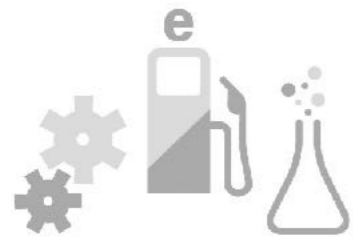


getmoving2020.org



CLIMATE SMART STRATEGIES

HIGH CO₂ REDUCTION IMPACT



FUELS & VEHICLES



PRICING



LAND USE



TRANSIT

MODERATE CO₂ REDUCTION IMPACT



BIKING & WALKING



INFO & INCENTIVES



SYSTEM MANAGEMENT

LOW CO₂ REDUCTION IMPACT



ROAD CONNECTIVITY





Welcome to the **Get Moving 2020 Master Presentation Deck!**

Here's how to use this deck:

STEP 1: Save a copy of this file with your presentation name “Location_Date”.

STEP 2: Edit the title slide to include the location and date of your presentation.

STEP 3: Think about the specific needs of your audience. What do they care about most? Do they need the high-level spiel, or will they want more specifics?

STEP 4: Delete any slides you don't need! The “base deck” is slides 1-35. Slides 36 and beyond illustrate other aspects of the measure, including Task Force process, community engagement, racial equity, climate outcomes, and county-by-county project details.

STEP 5: Refer to the GM2020-MasterDeck-SlideNotes.docx for slide-by-slide narrative.

Get Moving 2020

Chris Warner, PBOT Director



PBOT
PORTLAND BUREAU OF TRANSPORTATION

Get Moving Regional Investment Measure Resolution

1. Documents City Council support for the Get Moving measure
2. Documents City Council's commitment to deliver or partner in the delivery of projects after the successful passage of this measure

Next Steps

Date	Action
June	Council Action on Letter of Commitment
July	Metro referral to voters
November	General Election
Winter 2021	Council vote on IGA accepting funds and committing the City to project delivery