

RECLAIM *the* HOLIDAYS

Shoppers at local reuse organizations find unique gift ideas in all shapes and sizes.



— Sam

“There are so many stories to be told through other people’s items. To re-gift them to another human creates the next chapter in the story.”



“I celebrate people in my life by giving experiences, homemade gifts and sharing my time.” — Ann Marie



“The chances of finding something unique are so much greater at resale places and I usually discover special things that remind me of someone I care about.” — ck



“I look for raw materials like reclaimed old-growth wood to make a memorable gift for family or friends.” — Kyle



Buyerarchy of Needs: Sarah Lazarovic

Overwhelmed with stressful holiday errands, overspending and getting buried in all the packaging?

Consider a new low-waste way to approach the holidays this year that might save you some money and bring you a little more joy. The Buyerarchy of Needs is a visual guide to remind you of your other options besides buying something new.

As you look over your holiday lists, take a creative moment and ask yourself:

Is there something I already have I could use in a new way? Could I borrow or swap to get what I need? Maybe a thrift or resale shop has it? Can I make it?

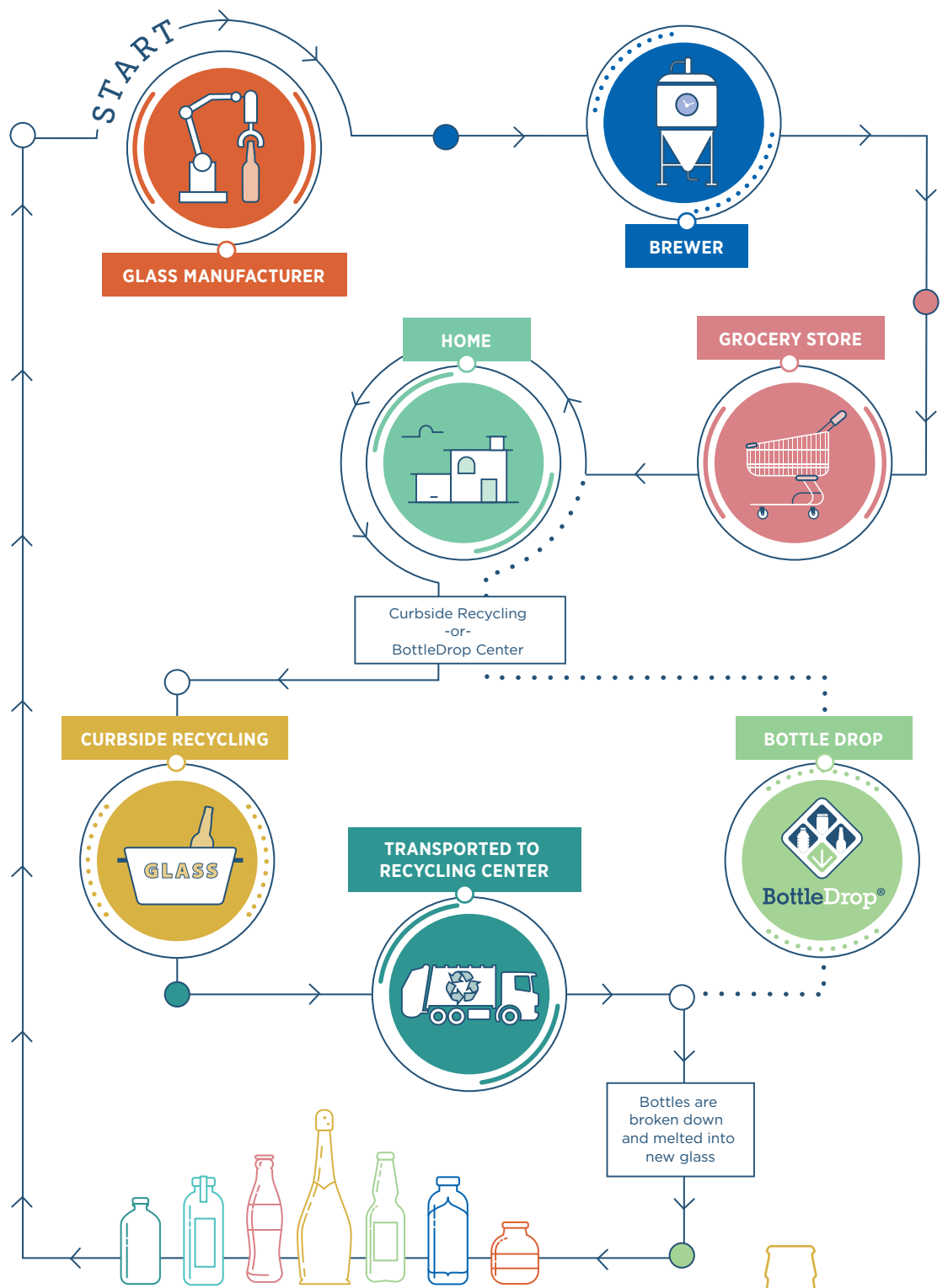
Intrigued? Resourceful PDX is your local resource for tips and ideas to make simple changes in everyday choices. In fact, the Resourceful PDX map includes community-based organizations that help residents reuse, swap, repair and share such items as tools, building or art supplies, household goods or other materials rather than throwing away or buying new.

Resolve to be a thoughtful consumer in the new year to save money and resources. For ideas and tips, visit www.resourcefulpdx.com.

BEYOND the CURB

When you put your recycling out for curbside pickup, you're connecting valuable materials to markets where they can be remade into new products. You're also helping reduce Portland's waste and saving energy and resources.

We get lots of questions about where recycling goes after it's picked up. Let's look at a glass bottle and its lifecycle. There are two ways you can recycle glass — in your yellow recycling bin, or if it has a deposit, you can take it to some grocery stores or a BottleDrop Center to get a 10¢ deposit back. Here's the journey a glass beer bottle takes when you recycle it.



RECYCLING IS GOOD, BUT REUSE IS BEST!

Oregon's Bottle Bill provides for a 10-cent return value on most beverage containers and it's been tremendously successful at reducing waste, litter, and energy and resource use. Recently, Oregon Beverage Recycling Cooperative launched a refillable glass bottle program with seven statewide breweries. Bottles can be refilled 25 times before the glass needs to be melted down and recycled. Reusing materials is even more efficient than recycling. Let's raise a glass to Oregon brewers and refillable bottles! For more information, visit www.bottledropcenters.com/refill.



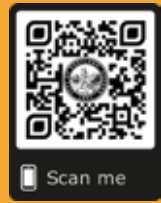
FIX-IT FAIR

HEALTHY FAMILIES, HEALTHY HOMES



FREE

WWW.PORTLANDOREGON.GOV/BPS/FIF



- OVER 60 EXHIBITORS
- HOURLY WORKSHOPS
- GREAT GIVEAWAYS
- LUNCH PROVIDED
- ON-SITE CHILDCARE
- REPAIR CAFÉ

SATURDAYS

9:30 AM

- TO -

2:30 PM

• **JANUARY 26, 2019**

Ockley Green Middle
6031 N Montana Ave

• **FEBRUARY 23, 2019**

Floyd Light Middle School
10800 SE Washington St

HEALTH | HOME REPAIRS & UTILITIES | FINANCE | GARDEN

Questions about holiday recycling?

Ask Metro.

503-234-3000

oregonmetro.gov



YOUR CURBSIDE GUIDE

www.portlandoregon.gov/bps/carts | 503-823-7202

GARBAGE

every-other-week or every-four-weeks



GARBAGE Coffee cups/lids/pods, paper/plastic plates, take-out food wrappers/containers, drink cups/straws, cutlery, frozen food packaging/trays, plastic "clamshells", plastic caps/lids, plastic bags, facial tissue, painted/stained wood, plywood, incandescent light bulbs, garden hoses.



MUST BE BAGGED Pet waste, cat litter, diapers, feminine hygiene products, ashes, sawdust, packaging peanuts, broken glass.



PLACE IN SEALED CONTAINER
Kitchen fats, cooking oil, grease.



NO: Computers, monitors, TVs, compact fluorescent lightbulbs (CFLs), hazardous waste, chemicals.

COMPOST

every week



FOOD SCRAPS Meat, poultry, seafood, bones, cheese, eggshells, bread, pasta, grains, beans, nuts, fruits, vegetables, coffee grounds, spoiled food.



YARD DEBRIS Weeds, leaves, vines, grass, small branches, flowers, house plants, plant clippings.



OTHER Paper napkins, paper towels, coffee filters, tea bags, pizza delivery boxes.



NO: "Compostable" or "Biodegradable" containers, household garbage, pet waste, diapers, plastic bags, lumber, dirt, ashes, rocks, branches larger than 4" thick and 36" long.

RECYCLE

every week



PLASTIC Bottles with a neck (6 oz. or larger), tubs (6 oz. or larger), plant pots (4" diameter or larger), buckets (5 gal. or smaller).



METAL Aluminum, tin and steel food cans, empty dry metal paint cans, empty aerosol cans, aluminum foil, scrap metal (shorter than 30" long and less than 30 lbs).



PAPER Newspapers, magazines, catalogs, phone books, flattened cardboard boxes, scrap paper, cartons (milk, juice, soup), shredded paper (in paper bag).



NO: Plastic bags, plastic caps/lids, diapers, propane cylinders, coffee cups/lids/pods, plastic "clamshells," Styrofoam™, plastic containers under 6 oz., prescription medicine bottles.

GLASS

every week



GLASS BOTTLES & JARS
Place in yellow bin or other plastic container with a "glass only" sticker.



MOTOR OIL Put in a leak-proof, clear plastic jug with lid and place next to carts for recycling.



NO: Light bulbs, drinking glasses, vases, broken glass, ceramics.

BLUE CART HIGHLIGHT

LEARN HOW TO SORT YOUR PLASTICS

YES!

Size and shape matter: Bottles with a neck and tubs (6 ounces or larger), plant pots (4 inches diameter or larger), buckets (5 gallons or smaller).



✓ Tubs



✓ Bottles



✓ Buckets



✓ Plastic pots

NO!

Put in garbage: Plastic bags, plastic containers (under 6 ounces), prescription medicine bottles, caps/lids, clamshell and take-out containers—including salad and roast chicken containers—and other single-use plastics like cutlery and straws.



✗ Plastic bags & wrappers



✗ Cups, lids & straws



✗ To-go containers



✗ Styrofoam & peanuts

THE HOLIDAY AFTERMATH | How to get rid of cut holiday trees and extra garbage

TREE OPTIONS

- On collection day, put trees that are 6 feet and under at the curb for a \$5 fee. Trees over 6 feet should be cut in half.
- Or cut the trunk and branches into pieces less than 36 inches long and 4 inches in diameter and put directly in compost carts. Just ensure that any tree pieces do not poke out of the cart.
- Or breakdown tree and put in kraft paper bags or bundle (tied securely with string or twine) at the curb on your collection day for a pick-up fee of \$3.75 each.

! Remember: Prepare your tree for pick-up by removing all tinsel, lights, ornaments, wire, nails, stands and other materials that cannot be composted. Trees covered in fake snow ("flocked") are not accepted as compost and must be disposed of as garbage.



EXTRA GARBAGE OPTIONS

Set out an extra garbage can or bag on your collection day for a \$5 fee during the holidays or anytime. Extra garbage must be 32 gallons or smaller and weigh 55 pounds or less.

Do you have items too big for your garbage container? Call your garbage and recycling company for a bulky waste collection cost estimate.

! Renters: Talk to the property manager if you need to set out bulky items or extra garbage.

Bureau of Planning and Sustainability
Innovation. Collaboration. Practical Solutions.

1900 SW 4th Ave, Suite 7100 | Portland, OR 97201
www.portlandoregon.gov/bps
503-823-7202

facebook.com/PortlandBPS | twitter.com/PortlandBPS

PRSR STD
US POSTAGE
PAID
PORTLAND OR
PERMIT NO 653

INSIDE

- Expect garbage and recycling trucks one day later from **December 25 - January 5**
- Beyond the curb: The journey of glass
- Recycling poster inside!

Portland Curbsider

HOLIDAYS MAY AFFECT YOUR COLLECTION DAY

Sign up for weekly email reminders about weather, as well as garbage, recycling and compost collection alerts.

Pick-up schedule changes from December 25 - January 5	
Your regular pick-up day is:	Your pick-up day will be:
• Monday	• NO CHANGE
• Tuesday-Friday	• ONE DAY LATER

LEAVE CARTS AT THE CURB IF SNOW PILES UP

Extreme winter weather in Portland may delay collection of your garbage, recycling and composting roll carts. Leave your carts at the curb and your garbage and recycling company will collect them as soon as driving conditions permit.

Visit www.garbage reminders.com to sign up for weekly email reminders that include winter weather collection alerts when necessary. Customers without email can always call 503-823-7202 or their garbage and recycling company.

Holiday schedule change information online

Información en línea sobre el cambio de programa para los días festivos

在线假期日程变更信息

Thông tin về thay đổi trong lịch nghỉ lễ hiện có trực tuyến

См. праздничные изменения расписания на сайте:

Macluumaadka jadwalka maalmaha fasaxa ah ee internet-ka laga helayo

年末年始収集日オンライン情報

معلومات تغيير مواعيد الجمع لأيام الأعياد موجودة على الإنترنت

Informații asupra schimbărilor programului de sărbători sunt pe internet

Інформація на сайті щодо змін у графіку у святкові дні

ຂໍ້ມູນການປ່ຽນແປງຕາຕະລາງວັນລັກທາງອອນລາຍ

www.portlandoregon.gov/bps/holiday