

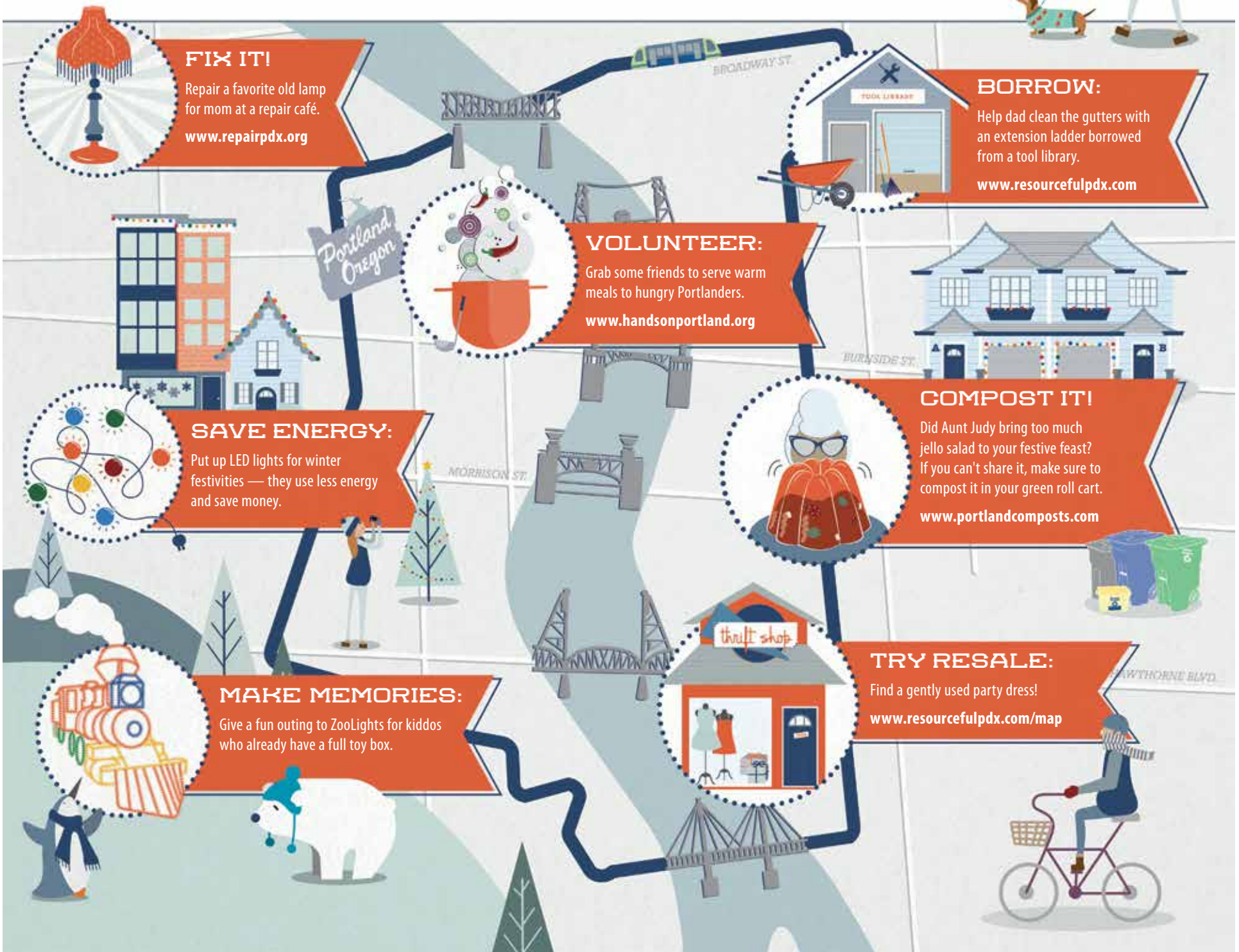
# Portland Curbsider

Bureau of Planning and Sustainability · Charlie Hales, Mayor · Susan Anderson, Director

Winter 2016

## a Winter Stroll in PORTLAND

**DECEMBER!** It's the season of creative giving and good times spent with friends and family. Exploring Portland is one way to enjoy a low-stress, high-happiness festive season. Along the way, remember that there are resourceful ways to give and make meaningful moments. *How will you make the most of these wintery weeks?*



THANKS PORTLAND,

# YOU'RE AMAZING!



*Can you believe Portland residents have been composting food scraps at the curb for five years now?*

In that time, we have created 400,000 tons of finished compost — enough to cover 2,400 acres of farmland (almost 4 square miles). That's a lot of compost!

Farmers, gardeners and landscapers use the compost to suppress weeds, conserve water and improve the health of the soil.

### MIND YOUR SCRAPS

While Portlanders do a great job composting their food scraps, there is still food left in the garbage. Even small amounts of food add up, so remember to compost your scraps when you are prepping meals, scraping plates, cleaning out the fridge or hosting a gathering. *Big or small, we want it all!*

Visit [www.portlandcomposts.com](http://www.portlandcomposts.com) to learn more.



# A **FIRST** FOR PORTLAND



Photo credit: Scott Yelton

*Portland is the first city in the country to save quality building materials by requiring deconstruction of homes built in 1916 or earlier.*

In nearly every Portland neighborhood, you can find places where old houses have been demolished. Over 90 percent of the demolitions are done using heavy machinery.

Portland recently became the first city in the country to require deconstruction instead of mechanical demolition when removing houses built in 1916 or earlier, as well as those with historic designations. This requirement applies to approximately one out of every three houses removed in Portland, resulting in less landfill waste and less dust, and more opportunities for local businesses.

In fact, the response from newly trained and certified contractors in deconstruction has been impressive. Existing companies are expanding and new companies are being formed, leading to a solid deconstruction workforce.

## WHAT TO EXPECT

If a house is deconstructed in your neighborhood, you will likely see new signs, recycling containers, stacks of salvaged material and perhaps heavy machinery assisting in deconstruction.

## GRANT OPPORTUNITIES

Grants are available for qualifying deconstruction projects.

Visit [www.exploredacon.com](http://www.exploredacon.com) for more details.



Photo credit: The ReBuilding Center

## QUESTIONS (and answers) from our CURBSIDE HOTLINE

**Q:** Which types of holiday paper items are recyclable?

**A:** Almost all types of paper are accepted in the blue recycling roll cart: **gift boxes, cardboard, tissue paper, wrapping paper, catalogs, greeting cards and envelopes.** Foil-lined wrapping paper and envelopes belong in the garbage.

**Q:** Can I compost my baking papers?

**A:** Items such as parchment paper and wrappers and liners from cupcakes and muffins belong in the garbage. Besides yard debris, the only non-food items accepted in the green composting roll cart are **paper napkins, paper towels, coffee filters, tea bags and pizza delivery boxes.**

**Q:** Can I recycle broken strings of lights?

**A:** Yes, at a local recycling depot. They don't belong in your blue recycling roll cart, but you can drop them off at a recycler that accepts them. Ask Metro about depot locations: [www.oregonmetro.gov/recycling](http://www.oregonmetro.gov/recycling)

**Q:** How do I get rid of my old computer?

**A:** Give away, donate or recycle outdated electronics. Oregon E-Cycles offers free options for recycling: [www.oregoncycles.org](http://www.oregoncycles.org)

**Q:** What should I do with packaging labeled "compostable" or "biodegradable"?

**A:** These items go in your garbage container, not in your recycling or composting roll carts. Many products labeled "compostable" or "biodegradable" don't break down properly at the composting facilities.

## HAVE MORE QUESTIONS?

- [www.portlandoregon.gov/bps/curbsidequestions](http://www.portlandoregon.gov/bps/curbsidequestions)
- [wasteinfo@portlandoregon.gov](mailto:wasteinfo@portlandoregon.gov)
- 503-823-7202

## SAVE THE DATE! ¡APARTE LA FECHA!

Fix-It Fairs run from  
9:30 a.m. to 2:30 p.m.

Todas las Fix-It Fairs son de  
9:30 a. m. a 2:30 p. m.

All fairs offer **FREE**  
childcare and lunch.

Todas las ferias ofrecen  
cuidado infantil y  
almuerzo **GRATUITOS.**

• **JAN. 28, 2017**  
George Middle School  
10000 N Burr Ave

• **FEB. 25, 2017**  
Madison High School  
2735 NE 82nd Ave



The Fix-It Fairs are presented by the City of Portland Bureau of Planning and Sustainability with support from the following sponsors: Energy Trust of Oregon, Pacific Power, Portland Water Bureau, KBOO and KUNP Univision.

Todas las Fix-It Fairs son presentadas por el Departamento de Planeación y Sostenibilidad de la Ciudad de Portland, con el apoyo de los siguientes patrocinadores: Energy Trust of Oregon, Pacific Power, Portland Water Bureau, KBOO y KUNP Univision.

## IT'S **FIX-IT FAIR** SEASON!

FIX-IT FAIRS are free events where you can learn simple ways to save money and stay healthy at home this winter.

Attend workshops — in English or Spanish — led by local experts about water and energy savings, home and personal health, food and nutrition, community resources, recycling and yard care, lead testing and more. There is a **free repair café** at each fair for simple sewing and small appliance repair, staffed by Repair PDX volunteers.

## ¡LEGÓ LA TEMPORADA DE **FIX-IT FAIR!**

FIX-IT FAIRS son eventos gratuitos donde usted puede aprender maneras simples de ahorrar dinero y mantenerse saludable en el hogar durante el invierno.

Asista a talleres — en inglés o español — dirigidos por expertos locales sobre como ahorrar agua y energía, la salud personal y del hogar, alimentos y nutrición, recursos de la comunidad, reciclaje y cuidado de patios y jardines, pruebas de plomo y más. En cada feria hay un café de reparación gratuito para realizar trabajos simples de costura y reparaciones menores de electrodomésticos, atendido por voluntarios de Repair PDX.

[www.portlandoregon.gov/bps/fif](http://www.portlandoregon.gov/bps/fif)



# QUICK REFERENCE GUIDE

New look, same list! Find a detailed list of what goes where at [www.portlandoregon.gov/bps/carts](http://www.portlandoregon.gov/bps/carts) or call 503-823-7202.

## GARBAGE

every-other-week or every-four-weeks

## COMPOST

every week

## RECYCLE

every week

## GLASS

every week

**HOLIDAY HIGHLIGHTS**

**GARBAGE**

- Holiday decorations (garlands, bows, pumpkins)
- "COMPOSTABLE" CONTAINERS (plastic cups, plates, containers)
- FREEZER CONTAINERS (ice cream boxes, frozen food)
- YARD DEBRIS (leaves, grass, twigs)

**COMPOST**

- HOLIDAY HIGHLIGHTS (gingerbread men, pumpkins, pinecones)
- FOOD SCRAPS (apple core, pizza, fish, chicken)
- YARD DEBRIS (leaves, grass, twigs)

**RECYCLE**

- HOLIDAY HIGHLIGHTS (cardboard boxes, paper)
- PAPER & CARDBOARD (newspapers, boxes)
- PLASTIC BOTTLES & TUBS (milk jugs, detergent bottles)
- METAL (cans, metal lids)

**GLASS**

- HOLIDAY HIGHLIGHTS (beer bottles, wine bottles, jars)
- BOTTLES & JARS (glass bottles, jars)

PLACE MOTOR OIL IN A CLEAR JUG NEXT TO BINS

**NO:** Computers, monitors, TVs, compact fluorescent light bulbs (CFLs), hazardous waste, chemicals.

**NO:** "Compostable" containers, pet waste, plastic bags, lumber, dirt, ashes, branches larger than 4" thick and 36" long.

**NO:** Plastic bags, diapers, propane cylinders, coffee pods, plastic clam shells, coffee cups/lids, plastic containers under 6 oz.

**NO:** Light bulbs, vases, broken glass, ceramics, lids, drinking glasses.

## EXTRA GARBAGE OPTIONS

After holiday entertaining and gift giving, you may find excess packaging and bulky items filling your garbage can. Here are some options:

- Set out an extra garbage can or bag on your collection day for a \$5 fee. Extra can must be 32 gallons or smaller and weigh 55 lbs. or less.
- Items that are too big for your garbage container (such as appliances or furniture) can be picked up for an extra charge. Find your garbage company at [www.garbagedayreminders.com](http://www.garbagedayreminders.com) and call them a week in advance for a cost estimate.

**Renters:** Talk to the landlord about setting out large or bulky items or extra garbage for collection. There is a fee for these services.

If you live in a rental house or smallplex of two to four units, the landlord is required to pay for and provide curbside collection service, including weekly recycling and composting.



## What do I do with old batteries?



**Ask Metro** whether to toss or recycle.

[oregonmetro.gov/batteries](http://oregonmetro.gov/batteries)  
503-234-3000





# FROM A NICKEL to a DIME

First increase in the Oregon Bottle Bill's 45-year history coming in April

**Starting April 1, 2017**, consumers will get a dime back for carbonated beverages and water bottles and cans.

**The Bottle Bill is good for recycling:** Oregon was the first state to enact a redemption program back in 1971, and early on, it was clear the program worked. The Bottle Bill increased collection rates by more than 90 percent and reduced litter by 77 percent.

When Oregonians take bottles and cans to be redeemed, they make it easier for our local recyclers to turn them into something new. Plus, you can get some money back!

**There are recycling options when it comes to those beverage containers:**

- Take bottles and cans to a local retailer or to a Bottle Drop Center to redeem for money.
- Set them out for recycling collection in your blue roll cart or yellow bin.

[www.bottledropcenters.com](http://www.bottledropcenters.com)



**Bureau of Planning and Sustainability**  
Innovation. Collaboration. Practical Solutions.



1900 SW 4th Ave, Suite 7100 | Portland, OR 97201  
[www.portlandoregon.gov/bps](http://www.portlandoregon.gov/bps)  
503-823-7202

[facebook.com/PortlandBPS](https://www.facebook.com/PortlandBPS) [twitter.com/PortlandBPS](https://twitter.com/PortlandBPS)

PRSR STD  
US POSTAGE  
PAID  
PORTLAND OR  
PERMIT NO 653

## INSIDE:

- NO HOLIDAY CHANGES to your Collection Schedule
- Fix-It Fair (¡En Español!)
- New deconstruction program

# Portland Curbsider

## AFTER TAKING DOWN YOUR TREE

..... a few easy options for holiday tree collection .....

Prepare your holiday tree for pick-up by removing all tinsel, lights, ornaments, wire, nails, stands and other materials that cannot be composted. Trees covered in fake snow are not accepted for composting and must be disposed of as garbage.



### 1. CURBSIDE COLLECTION: TREE PIECES

- \* Cut the trunk and branches into pieces less than 36 inches long and 4 inches in diameter and place in green composting roll cart.
- \* Ensure that any tree pieces in your green roll cart do not poke above the lip of the cart; 135 lb. weight limit.
- \* Tie bundles securely with string or twine; 45 lb. weight limit.
- \* Leave extra bundles or cans of yard debris at the curb for a fee of \$3.75 each.

### 2. CURBSIDE COLLECTION: WHOLE TREE

- \* Place trees 6 feet and under next to your green roll cart at the curb on your collection day for \$4.50.
- \* Cut larger trees down to 6 feet to ensure driver safety.

### 3. NON-PROFIT PICK-UP: WHOLE TREE

- \* Ask Metro to find a non-profit organization that will pick up for a fee. **503-234-3000**



## NO HOLIDAY SCHEDULE CHANGES

Christmas and New Year's Day both fall on Sundays this year, so there are no changes to your collection schedule.

All other holidays are regular pick-up days.

## BAD WEATHER?

In case of severe weather, there may be a delay in curbside collection. Leave carts at the curb and your garbage and recycling company will collect them as soon as possible.

Call the Curbside Hotline at **503-823-7202** or your company for details.

Find your company, check your collection day and sign up for weekly email reminders at: [www.garbageadayreminders.com](http://www.garbageadayreminders.com)